

Research article

# Dolutegravir–lamivudine as initial therapy in HIV-1 infected, ARV-naive patients, 48-week results of the PADDLE (Pilot Antiretroviral Design with Dolutegravir LamivudinE) study

Pedro Cahn<sup>§1</sup>, María José Rolón<sup>1</sup>, María Inés Figueroa<sup>1</sup>, Ana Gun<sup>2</sup>, Patricia Patterson<sup>1</sup> and Omar Sued<sup>1</sup>

<sup>§</sup>Corresponding author: Pedro Cahn, Fundación Huésped, Buenos Aires C1202ABB Argentina. ([pedro.cahn@huesped.org.ar](mailto:pedro.cahn@huesped.org.ar))

## Abstract

**Introduction:** A proof-of-concept study was designed to evaluate the antiviral efficacy, safety and tolerability of a two-drug regimen with dolutegravir 50 mg once daily (QD) plus lamivudine 300 mg once daily as initial highly active antiretroviral therapy (HAART) among antiretroviral (ARV)-naive patients.

**Methods:** PADDLE is a pilot study including 20 treatment-naive adults. To be selected, participants had no IAS-USA-defined resistance, HIV-1 RNA  $\leq 100,000$  copies/mL at screening and negative HBsAg. Plasma viral load (pVL) was measured at baseline; days 2, 4, 7, 10, 14, 21 and 28; weeks 6, 8 and 12; and thereafter every 12 weeks up to 96 weeks. Primary endpoint was the proportion of patients with HIV-1 RNA  $< 50$  copies/mL in an intention to treat (ITT)-exposed analysis at 48 weeks (the FDA snapshot algorithm).

**Results:** Median HIV-1 RNA at entry was 24,128 copies/mL (interquartile range (IQR): 11,686–36,794). Albeit as per protocol, all patients had pVL  $\leq 100,000$  copies/mL at screening as required by inclusion criteria, four patients had  $\geq 100,000$  copies/mL at baseline. Median baseline CD4+ T-cell count was 507 per cubic millimetre (IQR: 296–517). A rapid decline in pVL was observed (median VL decay from baseline to week 12 was 2.74 logs). All patients were suppressed at week 8 onwards up to week 24. At week 48, 90% (18/20) reached the primary endpoint of a pVL  $< 50$  copies/mL. Median change in CD4 cell count between baseline and week 48 was 267 cells/mm<sup>3</sup> (IQR: 180–462). No major tolerability/toxicity issues were observed. Nineteen patients completed 48 weeks of the study, and one patient (with undetectable VL at last visit) committed suicide. One patient presented a low-level protocol-defined confirmed virological failure at week 36, being the only observed failure. This patient had pVL  $< 50$  copies/mL at the end-of-study visit without having changed the two-drug regimen. Observed failure rate was 5%. This is the first report of integrase strand transfer inhibitor/lamivudine dual regimen in ARV-naive patients.

**Conclusions:** This novel dual regimen of dolutegravir and lamivudine warrants further clinical research and consideration as a potential therapeutic option for ARV-therapy-naive patients.

**ClinicalTrials.gov Identifier:** NCT02211482.

**Keywords:** dual therapy; dolutegravir; lamivudine; naive patients

Received 17 November 2017; Accepted 20 April 2017; Published 10 May 2017

**Copyright:** © 2017 Cahn P et al; licensee International AIDS Society. This is an Open Access article distributed under the terms of the Creative Commons Attribution 3.0 Unported (CC BY 3.0) License (<http://creativecommons.org/licenses/by/3.0/>), which permits unrestricted use, distribution, and reproduction in any medium, provided the original work is properly cited.

## Introduction

Zidovudine (ZDV) monotherapy was the first attempt to control HIV replication. Soon after, two-drug combination became the preferred strategy, as ZDV effects lasted only for the short term, due to selection of resistance mutations. Unfortunately, the dual strategy also failed in achieving long-lasting virologic control. Combination antiretroviral therapy (ART) containing three active drugs from at least two different classes has been the standard of care for HIV treatment all over the world since 1996, based on the findings of two seminal studies [1,2].

Expansion of access to antiretroviral (ARV) therapy has been the main driver of a striking 38% decline in HIV

incidence and a 35% reduction in AIDS-associated mortality since 2000 [3]. Current HIV treatment guidelines recommend first-line ARV regimens consisting of two nucleoside/nucleotide analogue reverse-transcriptase inhibitors (NRTIs) as a “backbone” combined with a third agent from the non-nucleoside reverse-transcriptase inhibitor, the boosted protease inhibitor (PI), or the integrase strand transfer inhibitor (INSTI) classes. Over the past two decades, novel drugs for ART have improved the rates of long-term viral suppression, but even the most widely used regimens might result in treatment modification or interruption because of tolerability, toxicities or issues like challenging treatment schedules, drug interactions and food requirements [4].

To reduce toxicity, complexity, and costs, strategies that decrease the number of active drugs have been evaluated, both as initial therapy and as maintenance therapy for patients who achieved virologic suppression. Most efforts have yielded unacceptable high rates of treatment failure [5]. A two-drug regimen with a boosted PI plus lamivudine (3TC) has demonstrated favourable results in treatment-naïve patients. The GARDEL study was the first to show non-inferiority of a dual combination of ritonavir-boosted lopinavir (LPV/r) plus 3TC, even in patients with baseline viral load (VL) above 100,000 copies/mL [6]. Other three studies showed non-inferior virologic efficacy of the same dual regimen or the combination of ritonavir-boosted atazanavir plus 3TC, all performed in virologically suppressed patients as a switch strategy [7–9].

Dolutegravir (DTG) is a potent INSTI, exhibiting rapid reduction in VL and a high barrier to resistance. DTG is a QD drug, well tolerated, that can be taken with or without food [10], with a low potential for drug–drug interactions [11], and a high genetic barrier [12]. Comparison with other preferred first-line drugs showed non-inferiority of DTG to raltegravir and superiority to efavirenz (EFV) and darunavir (DRV) in the randomized clinical trials SPRING, SINGLE and FLAMINGO, respectively [13–15].

Lamivudine (3TC) is a potent cytidine nucleoside analogue without major side effects, and it has a well-proven safety profile. In monotherapy, it has shown VL reduction up to 1.19 log [16]. It has a low genetic barrier selecting, in case of failure, the M184V mutation, which has been linked to a reduction in viral fitness [17]. This NRTI is also a QD drug, it can also be administered with or without food and no clinically relevant drug–drug interactions have been reported with its use [18].

The purpose of this pilot study was to assess the antiviral efficacy, safety and tolerability of a two-drug regimen with DTG 50 mg QD plus 3TC 300 mg QD as initial HAART among ARV-naïve patients.

## Methods

PADDLE is an ongoing pilot study involving HIV-1-infected patients naïve to ARV treatment. Participants were enrolled in Argentina between 24 September 2014 and 28 February 2015. The last participant completed 48 weeks of treatment on 24 February 2016.

This study was conducted in accordance with good clinical practice procedures, all applicable regulatory requirements and the guiding principles of the Declaration of Helsinki. The study protocol was reviewed and approved by the Institutional Review Board (Comité de Bioética, Fundación Huésped). All patients provided written informed consent before entering the study.

## Study design and participants

Eligible participants were 18 years of age or older, had HIV-1 infection, were naïve to ARV treatment (never exposed to ARV drugs), had a plasma HIV-1 RNA level at screening visit >5000 copies and ≤100,000 copies per millilitre and a CD4+ T-cell

count >200 per cubic millimetre with no evidence of genotypic of viral resistance to lamivudine as per IAS-USA 2013 resistance panel [19].

Main exclusion criteria were previous exposure to ARVs, VL >100,000 copies/mL, CD4 count below 200 cells/mL at screening, pregnancy or breastfeeding, severe hepatic impairment, grade 4 laboratory abnormalities or alanine aminotransferase (ALT) >5 times the upper limit of normal (ULN) or ALT ≥3 times the ULN and bilirubin ≥1.5 times the ULN (with >35% direct bilirubin) or creatinine clearance of <50 mL/min via Cockcroft–Gault method.

All participants were assigned to receive DTG 50 mg once daily plus 3TC 300 mg once daily.

In order to ensure patient's safety, a phase 2 implementation protocol was designed: In phase 1, 10 patients were included. If, at week 8, at least 8 out of 10 patients showed a VL decrease >1 log, the study would continue to phase 2 in which another 10 patients would be enrolled. If more than two patients showed a VL decrease <1 log, the study would be discontinued. In addition, all patients would have an intensive follow-up. Patients would continue on study unless any of the following stopping rules were met: Patients with VL ≥1000 copies/mL at week 12, patients with VL ≥400 copies/mL at week 24 or 36 or patients with a confirmed viral rebound (>200 c/mL) after VL <50 c/mL.

## Procedures

Study visits were scheduled at baseline; days 2, 4, 7 and 10; and weeks 2, 3, 4, 6, 8, 12, 24, 36 and 48. On completion of the week 48 visits, all the participants were offered the opportunity to continue in a study extension until week 96. The Abbott Real-Time HIV-1 assay was used to detect the HIV-1 RNA plasma level (lower limit of detection, 40 copies per millilitre). Adverse events (AEs), serious adverse events (SAEs) and laboratory measurements (including haematological measurements, fasting lipid profile and blood-chemistry profile) were assessed intermittently throughout the study, and their severity graded according to the criteria of the Division of AIDS (DAIDS) at the National Institute of Allergy and Infectious Diseases of the National Institutes of Health. Specifically, safety evaluations were completed as follows: AEs and concomitant medications on all visits and laboratory parameters and vital signs on screening, baseline and weeks 2, 4, 8, 12, 24, 36 and 48. Viral genotype was analysed (TRUGENE HIV-1 Genotyping Kit) at the screening visit and had to be obtained at time of protocol-defined virologic failure (PDVF) defined as VL ≥1000 copies/mL at week 12, VL ≥400 copies/mL at week 24 or 36 or a confirmed viral rebound (>200 c/mL) after VL <50 c/mL.

Participants were required to withdraw from the study if PDVF was confirmed. Baseline was assessed with the AIDS Clinical Trials Group (ACTG) Adherence/Baseline questionnaire at baseline visit and with ACTG/Follow-up Questionnaire at visits: 4, 8, 12, 24, 36 and 48.

## Outcomes

The primary efficacy endpoint was the proportion of subjects with plasma HIV-1 RNA below 50 copies per millilitre

at week 48 using the FDA snapshot algorithm (Missing, Switch or Discontinuation = failure) for the intention-to-treat exposed population (described in the Statistical analysis section). Secondary safety and efficacy endpoints included the frequency, type and severity of AEs and laboratory abnormalities, the proportion of patients with HIV-1 RNA <1000 copies/mL at week 12, the proportion of patients with HIV-RNA <400 at week 24, the incidence of genotypic and phenotypic resistance in case of virologic failure, the change from baseline in the CD4+ cell count, the lipid profile changes between baseline and week 48 and the viral decay rate.

### Statistical analysis

Virological efficacy is shown as intention-to-treat (exposed) and as per protocol. Final analysis includes 48-week results for the 20 patients. Descriptive statistics were used to evaluate the primary and secondary outcomes. The results are given as median and interquartile ranges (IQRs) or frequencies (%) as appropriate. Changes in CD4 were analysed similarly. All AEs were evaluated, summarized and described as the proportion of patients presenting events and the total number of events. In all samples with plasma HIV-RNA below limit of detection, absence of signal was tested.

### Role of the funding source

The study was sponsored by Fundación Huésped. Trial funding was provided by ViiV Healthcare. ViiV Healthcare contributed towards scientific review of the study design and this report. All operational aspects of the study, including study design, monitoring, data collection, data analysis and writing of the report, were managed by Fundación Huésped. All the authors had full access to all the data in the study and are responsible for the veracity and completeness of the data reported. The corresponding author has final responsibility for the decision to submit for publication.

### Results

A total of 35 patients were screened, and 20 patients were included and treated (Figure 1).

Demographic and baseline disease characteristics are referred to in Table 1. The median HIV-1 RNA level at baseline was 24,128 copies/mL (IQR: 11,686–36,794). Albeit, as per protocol, all patients had pVL <100,000 copies/mL, four patients had ≥100,000 copies/mL at baseline and entered the study (Table 1).

All but one patient, who committed suicide, completed 48 weeks in the study and were evaluated for the primary endpoint. Figure 1 shows the disposition of patients during the trial. Adherence (self-reported and controlled by pill counts at each visit) was 100%. Median CD4 cell count change from baseline was 267 cells/mm<sup>3</sup> (IQR: 180–462).

At week 48, 18 out of 20 subjects (90%, 95% confidence interval (CI): 77–100), reached plasma HIV-1 RNA level of

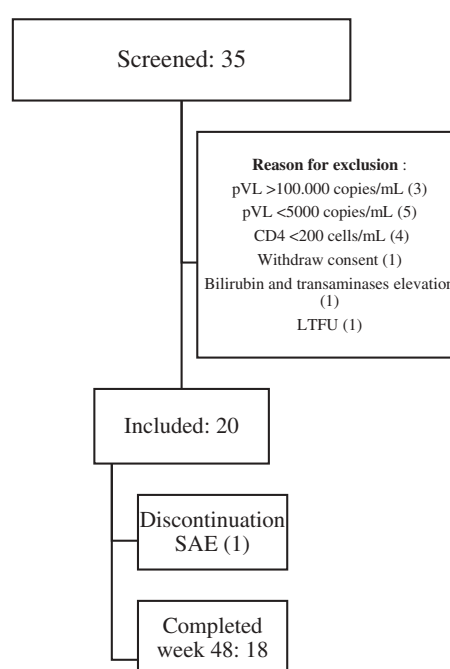


Figure 1. Trial profile.

Table 1. Demographic and baseline disease characteristics.

Demographic and baseline characteristics	
Gender (male: female)	19:1
Age, years, median (IQR)	34 (31–43)
Mode of transmission (n)	
MSM	15
Heterosexual	5
HIV-RNA (copies/mL), median (IQR)	24,128 (11,686–36,794)
CD4 count, cells/mm <sup>3</sup> , median (IQR)	507 (296–517)
CDC stage (%) A/B/C	90/10/0

IQR: interquartile range.

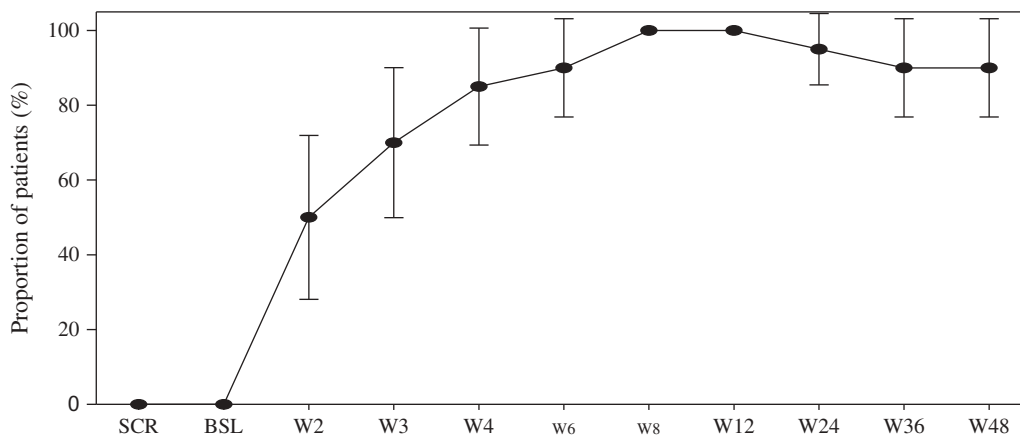
CDC: Centers for Disease Control and Prevention.

less than 50 copies per millilitre in ITT-exposed analyses (Figure 2).

In the per-protocol analyses, 18 out of 19 subjects were responders (95%, 95% CI: 85–100). All subjects, including the four subjects that entered the study with baseline pVL above 100,000 copies/mL, achieved VL below 400 copies at week 3 and HIV-1 RNA level of <50 copies per millilitre at 8 weeks.

A rapid antiviral response was observed (median VL decay from baseline to week 12 was 2.74 logs).

Through week 48, only one patient met the criteria for protocol-defined virologic failure. This patient entered the study with a pVL of 106,320 copies, achieved pVL below 400 copies/mL at day 10 and pVL below 50 copies/mL at week 4 and remained so until week 24. On the week 36 visit, his pVL



**Figure 2. Proportion of patients with plasma HIV-1 RNA lower than 50 copies per mL, by visit (Snapshot analysis). Analysis included all participants who received at least one dose of study drug.**

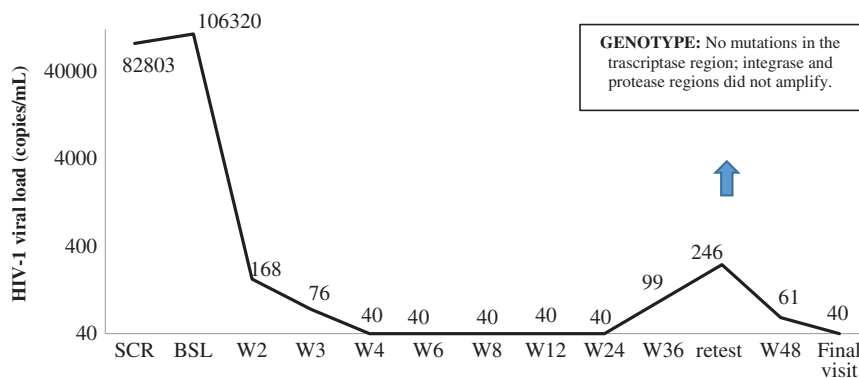
was 99 copies/mL. After reviewing patient’s compliance with the protocol, and ruling out potential intercurrent infections or vaccinations, a retest was performed three weeks later, showing a pVL of 246 copies/mL. The patient was discontinued from the study, as mandated by the protocol, but was followed off-study until week 48. The latest pVL obtained at that time was below 50 copies/mL, without any change on his ARV regimen (Figure 3).

Albeit initially the subject denied any sex behaviour that might have put him at risk for reinfection, later on he disclosed that he had unprotected sexual intercourse with another male partner, who is HIV positive and on treatment, but still with detectable pVL. A virus pattern comparison between baseline and rebound could not be performed. Genotypic testing was performed at confirmed virological failure, but only the transcriptase region could be successfully amplified due to the low viremia. No mutations were found. Phenotypic resistance testing was not performed. The baseline genotypic test for integrase region did not reveal any mutation. A DTG plasma concentration was also obtained at failure. The DTG concentration in a sample collected 12 h after drug intake was 2.70 µg/mL, which was consistent with the pharmacokinetics and half-life reported in SPRING-1 [20] and far above the *in vitro*

protein adjusted IC<sub>90</sub> of viral suppression (0.064 µg/mL) [21], providing further evidence that non-adherence is not the most likely explanation for this transient viral rebound. Drug levels of 3TC were not performed.

The study drugs were well tolerated. Eight drug-related AEs were reported in six patients: headache (3), somnolence (1), epigastric pain (1), diarrhoea (1) and nausea (2) (grade 1 to 2), with no AEs leading to discontinuation of the study drug. The most frequent drug-related AE was headache in three patients. Grade 2 to 3 laboratory abnormalities (three events in three patients) were proteinuria (grade 3, since baseline), creatinine phosphokinase (grade 3, only at baseline) and haematuria (grade 3, at week 48). One patient reported grade 2 insomnia at entry, without changes during the study and was deemed as not related to the study drugs.

One patient died during the study. He committed suicide, in the context of severe stress and emotional trauma. A relative disclosed that he had previous psychiatric disturbances, including a failed suicide attempt, which was not disclosed by the patient during his clinical visits. His death was noticed when he failed to show up at the week 36 visit. He achieved pVL below 50 copies/mL since week 2 and remained so until his last visit on week 24. No other SAEs were reported.



**Figure 3. Viral load evolution (copies/mL) at virological failure by visit.**

## Discussion

This pilot study was designed to test the concept that a two-drug regimen based on an INSTI and lamivudine could be considered as an option for treatment-naïve, HIV-infected patients. Successful dual therapy may reduce toxicity, treatment cost and the amount of drug required to be co-formulated in single tablet treatment regimens.

Dual-therapy strategies have been studied with heterogeneous results that were summarized in two recent systematic reviews [5,22].

One of the first studies using an NRTI-sparing dual therapy was the ACTG 5142 study that compared three arms as initial ART: EFV + 2 NRTIs, ritonavir-boosted LPV/r + 2 NRTIs or EFV + LPV/r. As the dual therapy showed lower efficacy and higher risk of emergency or resistance than the others, EFV + 2 NRTIs arm became the standard of care until recent years [23]. The GARDEL study was the first one to demonstrate non-inferiority of a dual therapy compared to triple therapy at 48 and 96 weeks [24,25]. An INSTI dual regimen of DRV and raltegravir (RAL) showed non-inferiority compared to a DRV triple therapy, but failed to do so in critical populations, like patients with pVL above 100,000 copies/mL and CD4 counts below 200 cells/mL [26]. A potential explanation of these results could be the requirement of two separated doses of RAL, while DRV was dosed once daily, which could have impaired adherence. The results of the PADDLE study provide further evidence that the potency required to achieve viral suppression does not necessarily mean the use of a three-drug ARV combination. Regarding the primary endpoint, 90% of the study population had undetectable pVL at week 48. Of note, all patients, including those with baseline pVL above 100,000 copies/mL had a rapid viral suppression that matches the one seen in other studies combining DTG with two NRTIs. Compared to SINGLE and SPRING studies, VL decay did not reveal any differences between treatments [27].

The patient that presented the only SAE (suicide) achieved pVL below 50 copies/mL at week 2 and remained so until his last visit on week 24. HIV and/or HAART have been previously related to suicidality. A nationwide Swiss study showed that in 2008, suicide rates in HIV-infected individuals were more than three times higher than the rates of the general population [28]. In a voluntary testing and counselling centre in South Africa, the investigators found that a significantly elevated risk of suicidal ideation was found in 83.1% of the patients who tested seropositive [29].

EFV relationship with suicidality has been studied with divergent conclusions, ranging from a twofold increased hazard of suicidality compared with a regimen without EFV to no increased risk at all [30–32]. With DTG, events of suicidal ideation, attempt or behaviour have been reported in less than 2% of ARV treatment-naïve or ARV treatment-experienced patients in eight registration clinical trials (SPRING-1, SPRING-2, SINGLE, FLAMINGO, SAILING, VIKING, VIKING-3 and VIKING-4). These events were observed primarily in patients with a pre-existing history of depression or other psychiatric illness. Suicidal

ideation is quoted in RAL and elvitegravir package inserts among the less common adverse reactions observed in treatment-experienced studies [33]. The relationship of our patient's suicide with DTG cannot be absolutely ruled out, albeit our patient had at least two stressful and traumatic life events, as we found out retrospectively, and this could be the explanation for his tragic decision.

Through week 48, one patient met the criteria for **PDVF** (confirmed viral rebound above 50 copies after being undetectable). Therefore, the primary analysis shows 90% of the patients with pVL <50 copies in the ITT-exposed, FDA snapshot analysis. Observed failure, as the patient who committed suicide had undetectable pVL at last visit, was 5%.

The clinical implications of low-level viremia are controversial. Department of Human Health Services (DHHS) ARV guidelines define virologic failure as the inability to achieve or maintain suppression of viral replication to an HIV-RNA level <200 copies/mL and state that viremia “blips” are not usually associated with subsequent virologic failure [34].

Our study has some limitations. As a pilot proof-of-concept trial, it has a small sample size. Given that this dual regimen has been never tested before, we preferred a cautious design, treating first a cohort of 10 patients, and recruiting the second cohort when initial success was achieved, as predefined in the study protocol. Other limitations include being an open-label study, with a single arm and a low median VL at entry, albeit four of the volunteers had baseline pVL above 100,000 copies/mL.

A limitation for using this dual regimen is that patients with active hepatitis B infection (HBV) would not be eligible, as HBV would be exposed to 3TC monotherapy, which is no longer the standard-of-care for that infection. Universal HBV vaccination is encouraged as a public health intervention, regardless of the ARV strategy selected. Special populations like pregnant women and patients with active tuberculosis were excluded, hence this strategy cannot be considered for those populations until specific studies are completed. Nevertheless, the PADDLE study strategy might potentially address several unmet needs. First, toxicities associated with NRTIs other than 3TC may compromise lifelong exposures to those compounds. Tenofovir disoproxil fumarate (TDF) lowers bone density more than other NRTIs and can be nephrotoxic [35,36]. Abacavir can induce a potentially life-threatening hypersensitivity syndrome, and only patients who are negative for the HLA-B\*5701 allele can be treated with this drug. Also, it has been associated with an increased risk of cardiovascular disease, albeit other studies failed to confirm this association [37]. The new tenofovir alafenamide formulation (TAF) has shown similar efficacy to TDF [38], with a better safety profile, but long-term data are needed to confirm the TAF safety profile. TAF is already available in western countries, but it is uncertain when it will be available in the rest of the world, which carries the heaviest burden of the epidemic. ZDV (still used in some developing countries) causes myelosuppression, gastrointestinal symptoms, headaches and mitochondrial toxicity that can lead to lipodystrophy, hepatic steatosis and lactic acidosis. Second, 3TC is a potent and inexpensive drug that can be easily

co-formulated with DTG, providing a single pill QD first-line option that might be easy to administer, with minimal side effects and few drug interactions. Third, the total amount of active pharmaceutical ingredients required is low, allowing to produce smaller pills. Fourth, given the production cost of the DTG and 3TC, this regimen might be the cheapest drug combination according to a recent WHO forecast that estimated the annual cost per patient at about UDS44 [39]. Even in the US, the use of this combination as initial therapy or switching could result in significant savings. Girouard et al. compared no ART to an initial dual regimen (DTG + 3TC); to an induction–maintenance strategy (48-week induction regimen of DTG + abacavir + 3TC) followed by DTG + 3TC maintenance if virologically suppressed; and to a standard-of-care three-drug regimen (DTG + abacavir + 3TC) [40]. Two-drug regimen was the most cost-effective strategy if DTG + 3TC 48-week virologic suppression rate could exceed 90%.

## Conclusions

The results of this small, proof-of-concept, pilot study encourage further exploration of this strategy. Our results suggest that the combination of DTG and 3TC could be considered as an alternative option in first line, sparing exposure to other nucleosides and preserving other treatment options downstream, if needed. The low rate of side effects reported in the study is attributable to the avoidance of the second NRTI. Dual therapy with DTG + 3TC could be a highly effective, simple and, in some settings, cost-effective first-line option for HIV patients. If our findings are confirmed in the ongoing randomized trials GEMINI 1 (NCT02831673) and GEMINI 2 (NCT02831764), this strategy may challenge the value of adding a third nucleoside to the outcomes of HAART. Until then, the decision of using this dual regimen outside clinical trials should be carefully considered.

### Authors' affiliations

<sup>1</sup>Clinical Research Department, Fundación Huésped, Buenos Aires, Argentina;  
<sup>2</sup>Laboratory, Clinical Research Department, Fundación Huésped, Buenos Aires, Argentina

### Competing interest

PC is a member of the WHO Guidelines Panel and a former member of the IAS-USA Guidelines Panel. He has served on the advisory boards for GlaxoSmithKline (ViiV), Merck, Pfizer, Gilead Sciences and Tibotec (Janssen) Therapeutics. He has served as investigator for Abbott, Avexa, Boehringer Ingelheim, Gilead Sciences, GlaxoSmithKline, Merck, Pfizer, Pharmasset, Roche Laboratories and Tibotec Therapeutics, and his institution has received honoraria for his speaking or chairing engagements from Abbott Laboratories, Bristol-Myers Squibb, GlaxoSmithKline, Merck, Pfizer, Tibotec and ViiV Healthcare.

OS has received honoraria for his speaking from Abbott Laboratories and Merck. He has served as investigator for Investigator Initiated Research funded by ViiV.

MIF, MJR, AG, PP and SPL declare that they have no competing interests.

### Authors' contributions

PC, OS, MJR and MIF designed the study with support and limited input from ViiV Healthcare. Fundación Huésped investigators enrolled patients in the study and were involved in acquisition of data. AG was in charge of

laboratory analysis. PP and MIF were responsible for patient's clinical care. PC, MJR, MIF and OS analysed data, clinically oversaw the study and participated in data interpretation. The report was drafted by PC, OS, MIF and MJR. All authors provided input to the report and approved the final version. All authors have read and approved the final version.

### Acknowledgements

Lamivudine and Dolutegravir were provided by ViiV Healthcare. The 24-week data in this report were presented at the 15th European AIDS Conference (Barcelona, Spain, 21–24 October 2015; oral presentation **LBPS4/1**). The 48-week data were presented at the IAS Conference in Durban, South Africa; Oral presentation # FRAB0104LB. We thank the PADDLE study participants and their families and caregivers for participation in the study and all the team of the Fundación Huésped Clinical Research Department for their commitment. Horacio Salomon, at INBIRS (Buenos Aires), performed the resistance tests. Santiago Perez Lloret provided statistical support. Dr Aliou B. Amara from Liverpool Bioanalytical Facility Royal Liverpool University Hospital for performing drug monitoring and Mark Wainberg for providing virological advice.

### References

1. Gulick RM, Mellors JW, Havlir D, Eron JJ, Gonzalez C, McMahon D, et al. Treatment with indinavir, zidovudine, and lamivudine in adults with human immunodeficiency virus infection and prior antiretroviral therapy. *N Engl J Med.* **1997**;337:734–39.
2. Montaner JS, Reiss P, Cooper D, Vella S, Harris M, Conway B, et al. A randomized, double-blind trial comparing combinations of nevirapine, didanosine, and zidovudine for HIV-infected patients: the INCAS trial. Italy, The Netherlands, Canada and Australia Study. *JAMA.* **1998**;279:930–37. [cited 2016 Jan 10]. Available from: <http://www.ncbi.nlm.nih.gov/pubmed/9544767>
3. UNAIDS. AIDS by the numbers 2015; **2015**.
4. Cihlar T, Fordyce M. Current status and prospects of HIV treatment. *Curr Opin Virol.* **2016**;18:50–6.
5. Baril J-G, Angel JB, Gill MJ, Gathe J, Cahn P, van Wyk J, et al. Dual therapy treatment strategies for the management of patients infected with HIV: a systematic review of current evidence in ARV-naïve or ARV-experienced, virologically suppressed patients. *PLoS One.* **2016**;11:e0148231.
6. Cahn P, Andrade-Villanueva J, Arribas JR, Gatell JM, Lama JR, Norton M, et al. Dual therapy with lopinavir and ritonavir plus lamivudine versus triple therapy with lopinavir and ritonavir plus two nucleoside reverse transcriptase inhibitors in antiretroviral-therapy-naïve adults with HIV-1 infection: 48 week results of the randomise. *Lancet Infect Dis.* **2014**;14:572–80.
7. Fabbiani M, Di Giambenedetto S, Quiros-Roldan E, Latini A, Vullo V, Antinori A, et al. Simplification to atazanavir/ritonavir+lamivudine in virologically suppressed HIV-infected patients: 24-weeks interim analysis from ATLAS-M trial. *J Int AIDS Soc.* **2014**;17:19808.
8. Perez-Molina JA, Rubio R, Rivero A, Pasquau J, Suárez-Lozano I, Riera M, et al., GESIDA 7011 Study Group. Dual treatment with atazanavir–ritonavir plus lamivudine versus triple treatment with atazanavir–ritonavir plus two nucleoside(t) ides in virologically stable patients with HIV-1 (SALT): 48 week results from a randomised, open-label, non-inferiority trial. *Lancet Infect Dis.* **2015**;15:775–84.
9. Di Giambenedetto S, Fabbiani M, Colafigli M, Ciccarelli N, Farina S, Sidella L, et al. Safety and feasibility of treatment simplification to atazanavir/ritonavir + lamivudine in HIV-infected patients on stable treatment with two nucleoside(t) reverse transcriptase inhibitors + atazanavir/ritonavir with virological suppression (Atazanavir an). *J Antimicrob Chemother.* **2013**;68:1364–72.
10. Curtis L, Nichols G, Stainsby C, Lim J, Aylott A, Wynne B, et al. Dolutegravir: clinical and laboratory safety in integrase inhibitor-naïve patients. *HIV Clin Trials.* **n.d.**;15:199–208.
11. Cohn J, Bekker L-G, Bygrave H, Calmy A. Hit me with your best shot: dolutegravir – a space in the next WHO guidelines? *AIDS.* **2015**;29:2067–70.
12. Wainberg MA, Mesplede T. Implications for the future of the HIV epidemic if drug resistance against dolutegravir cannot occur in first-line therapy. *J Int AIDS Soc.* **2015**;18:20824.
13. Raffi F, Jaeger H, Quiros-Roldan E, Albrecht H, Belonosova E, Gatell JM, et al., extended SPRING-2 Study Group. Once-daily dolutegravir versus twice-daily raltegravir in antiretroviral-naïve adults with HIV-1 infection (SPRING-2

- study): 96 week results from a randomised, double-blind, non-inferiority trial. *Lancet Infect Dis.* **2013**;13:927–35.
14. Walmsley SL, Antela A, Clumeck N, Duiculescu D, Eberhard A, Gutiérrez F, et al. Dolutegravir plus abacavir-lamivudine for the treatment of HIV-1 infection. *N Engl J Med.* **2013**;369:1807–18.
15. Molina J-M, Clotet B, van Lunzen J, Lazzarin A, Cavassini M, Henry K, et al., FLAMINGO study team. Once-daily dolutegravir versus darunavir plus ritonavir for treatment-naïve adults with HIV-1 infection (FLAMINGO): 96 week results from a randomised, open-label, phase 3b study. *Lancet HIV.* **2015**;2:e127–36.
16. Eron JJ, Benoit SL, Jemsek J, MacArthur RD, Santana J, Quinn JB, et al. Treatment with lamivudine, zidovudine, or both in HIV-positive patients with 200 to 500 CD4+ cells per cubic millimeter. *North American HIV working party. N Engl J Med.* **1995**;333:1662–69.
17. Wainberg MA. The impact of the M184V substitution on drug resistance and viral fitness. *Expert Rev Anti Infect Ther.* **2004**;2:147–51.
18. Paredes R, Sagar M, Marconi VC, Hoh R, Martin JN, Parkin NT, et al. In vivo fitness cost of the M184V mutation in multidrug-resistant human immunodeficiency virus type 1 in the absence of lamivudine. *J Virol.* **2009**;83:2038–43.
19. Johnson VA, Calvez V, Gunthard HF, Paredes R, Pillay D, Shafer RW, et al. Update of the drug resistance mutations in HIV-1: March 2013. *Top Antivir Med.* **n.d.**;21:6–14.
20. van Lunzen J, Maggiolo F, Arribas JR, Rakhmanova A, Yeni P, Young B, et al. Once daily dolutegravir (S/GSK1349572) in combination therapy in antiretroviral-naïve adults with HIV: planned interim 48 week results from SPRING-1, a dose-ranging, randomised, phase 2b trial. *Lancet Infect Dis.* **2012**;12:111–18.
21. Min S, Sloan L, Dejesus E, Hawkins T, McCurdy L, Song I, et al. Antiviral activity, safety, and pharmacokinetics/pharmacodynamics of dolutegravir as 10-day monotherapy in HIV-1-infected adults. *AIDS.* **2011**;25:1737–45.
22. Achhra AC, Mwasakifwa G, Amin J, Boyd MA. Efficacy and safety of contemporary dual-drug antiretroviral regimens as first-line treatment or as a simplification strategy: a systematic review and meta-analysis. *Lancet HIV.* **2016**;3:e351–60.
23. Riddler SA, Haubrich R, DiRienzo AG, Peeples L, Powderly WG, Klingman KL, et al., AIDS Clinical Trials Group Study A5142 Team. Class-sparing regimens for initial treatment of HIV-1 infection. *N Engl J Med.* **2008**;358:2095–106.
24. Havlir DV, Marschner IC, Hirsch MS, Collier AC, Tebas P, Bassett RL, et al. Maintenance antiretroviral therapies in HIV infected patients with undetectable plasma HIV RNA after triple-drug therapy. *AIDS Clinical Trials Group Study 343 Team. N Engl J Med.* **1998**;339:1261–68.
25. Cahn P, on behalf of the GARDEL Study Group. Durability of dual therapy (DT) with lopinavir/ritonavir (LPV/r) and lamivudine (3TC) in comparison to standard triple drug therapy (TT): 96-week results of the GARDEL study. Abstract presented at: 15th European AIDS Clinical Society Conference, 2015, Barcelona, Spain. Available from: <http://www.eacsociety.org/conferences/eacs-conference-archive/eacs-conferences-archive.html>.
26. Raffi F, Babiker AG, Richert L, Molina J-M, George EC, Antinori A, et al. Ritonavir-boosted darunavir combined with raltegravir or tenofovir-emtricitabine in antiretroviral-naïve adults infected with HIV-1: 96 week results from the NEAT001/ANRS143 randomised non-inferiority trial. *Lancet.* **2014**;384:1942–51.
27. Sued O, Figueroa MI, Rolon MJ, Patterson P, Brown D, Gun A, et al. Comparable viral decay in dual and triple dolutegravir-based antiretroviral therapy | CROI conference. In: CROI; Boston. **2016**. p. 974. [cited 2016 Dec 23]. Available from: <http://www.croiconference.org/sessions/comparable-viral-decay-dual-and-triple-dolutegravir-based-antiretroviral-therapy>
28. Keiser O, Spoerri A, Brinkhof MWG, Hasse B, Gayet-Ageron A, Tissot F, et al., Swiss HIV Cohort Study. Swiss National Cohort, Suicide in HIV-infected individuals and the general population in Switzerland, 1988-2008. *Am J Psychiatry.* **2010**;167:143–50.
29. Schlebusch L, Govender RD. Elevated risk of suicidal ideation in HIV-positive persons. *Depress Res Treat.* **2015**;2015:609172.
30. Nkhoma ET, Coumbis J, Farr AM, Johnston SS, Chu BC, Rosenblatt LC, et al. No evidence of an association between efavirenz exposure and suicidality among HIV patients initiating antiretroviral therapy in a retrospective cohort study of real world data. *Medicine.* **2016**;95:e2480.
31. Smith C, Ryom L, d'Arminio Monforte A, Reiss P, Mocroft A, El-Sadr W, et al. Lack of association between use of efavirenz and death from suicide: evidence from the D:A:D study. *J Int AIDS Soc.* **2014**;17:19512.
32. Mollan KR, Smurzynski M, Eron JJ, Daar ES, Campbell TB, Sax PE, et al. Association between efavirenz as initial therapy for HIV-1 infection and increased risk for suicidal ideation or attempted or completed suicide: an analysis of trial data. *Ann Intern Med.* **2014**;161:1–10.
33. VITEKTA® (elvitegravir). **n.d.**
34. DHHS. Guidelines for the use of antiretroviral agents in HIV-1-infected adults and adolescents. **2015**. [2017 April 26]. Available from: <https://aidsinfo.nih.gov/guidelines/html/1/adult-and-adolescent-treatment-guidelines/0/>.
35. Mocroft A, Lundgren JD, Ross M, Fux CA, Reiss P, Moranne O, et al., Data Collection on Adverse events of Anti-HIV Drugs (D:A:D) Study. Cumulative and current exposure to potentially nephrotoxic antiretrovirals and development of chronic kidney disease in HIV-positive individuals with a normal baseline estimated glomerular filtration rate: a prospective international cohort study. *Lancet HIV.* **2016**;3:e23–32.
36. Carr A, Cooper DA. Adverse effects of antiretroviral therapy. *Lancet.* **2000**;356:1423–30.
37. Sabin CA, Worm SW, Weber R, Reiss P, El-Sadr W, Dabis F, et al. Use of nucleoside reverse transcriptase inhibitors and risk of myocardial infarction in HIV-infected patients enrolled in the D:A:D study: a multi-cohort collaboration. *Lancet.* **2008**;371:1417–26.
38. Sax PE, Zolopa A, Brar I, Elion R, Ortiz R, Post F, et al. Tenofovir alafenamide vs. tenofovir disoproxil fumarate in single tablet regimens for initial HIV-1 therapy: a randomized phase 2 study. *J Acquir Immune Defic Syndr.* **2014**;67:52–8.
39. Vitoria M, Hill AM, Ford NP, Doherty M, Khoo SH, Pozniak AL. Choice of antiretroviral drugs for continued treatment scale-up in a public health approach: what more do we need to know? *J Int AIDS Soc.* **2016**;19. doi:10.7448/IAS.19.1.20504
40. Girouard MP, Sax PE, Parker RA, Taiwo B, Freedberg KA, Gulick RM, et al. The cost-effectiveness and budget impact of 2-drug dolutegravir-lamivudine regimens for the treatment of HIV infection in the United States. *Clin Infect Dis.* **2016**;62:784–91.