

Immune-Array Analysis in Sporadic Inclusion Body Myositis Reveals HLA–DRB1 Amino Acid Heterogeneity Across the Myositis Spectrum

Simon Rothwell,¹ Robert G. Cooper,² Ingrid E. Lundberg,³ Peter K. Gregersen,⁴ Michael G. Hanna,⁵ Pedro M. Machado,⁵ Megan K. Herbert,⁶ Ger J. M. Pruijn,⁷ James B. Lilleker,⁸ Mark Roberts,⁹ John Bowes,¹ Michael F. Seldin,¹⁰ Jiri Vencovsky,¹¹ Katalin Danko,¹² Vidya Limaye,¹³ Albert Selva-O’Callaghan,¹⁴ Hazel Platt,¹ Øyvind Molberg,¹⁵ Olivier Benveniste,¹⁶ Timothy R. D. J. Radstake,¹⁷ Andrea Doria,¹⁸ Jan De Bleecker,¹⁹ Boel De Paepe,¹⁹ Christian Gieger,²⁰ Thomas Meitinger,²¹ Juliane Winkelmann,²¹ Christopher I. Amos,²² William E. Ollier,¹ Leonid Padyukov,²³ Annette T. Lee,⁴ Janine A. Lamb,¹ and Hector Chinoy,²⁴ for the Myositis Genetics Consortium

Objective. Inclusion body myositis (IBM) is characterized by a combination of inflammatory and degenerative changes affecting muscle. While the primary cause of IBM is unknown, genetic factors may influence disease

susceptibility. To determine genetic factors contributing to the etiology of IBM, we conducted the largest genetic association study of the disease to date, investigating immune-related genes using the Immunochip.

The views expressed herein are those of the authors and not necessarily those of the (UK) National Health Service (NHS), the NIHR, or the (UK) Department of Health.

Supported by the NIHR (Biomedical Research Unit Funding Scheme) and the University College London Hospitals Biomedical Research Centre. Supported in part by the Association Française Contre Les Myopathies, the European Science Foundation (Research Networking Programme European Myositis Network), the Swedish Research Council, the regional agreement on medical training and clinical research between Stockholm County Council and Karolinska Institutet, the Swedish Research Council, Myositis UK, Arthritis Research UK (grant 18474), and Prinses Beatrix Spierfonds (project W.OR12-15). Dr. Rothwell’s work was supported by the Wellcome Trust (grant 105610/Z/14/Z). Dr. Machado’s work was supported by the NIHR (Rare Diseases Translational Research Collaboration Post-Doctoral Fellowship). The Czech cohort was supported by the Ministry of Health, Czech Republic (Project for Conceptual Development of Research Organization grant 00023728).

¹Simon Rothwell, PhD, John Bowes, PhD, Hazel Platt, BSc, William E. Ollier, PhD, Janine A. Lamb, PhD: University of Manchester, Manchester, UK; ²Robert G. Cooper, MD: University of Liverpool, Liverpool, UK; ³Ingrid E. Lundberg, MD: Karolinska University Hospital, Karolinska Institutet, Stockholm, Sweden; ⁴Peter K. Gregersen, MD, Annette T. Lee, PhD: Feinstein Institute for Medical Research, Manhasset, New York; ⁵Michael G. Hanna, MD, Pedro M. Machado, MD, PhD: University College London, London, UK; ⁶Megan K. Herbert, PhD: Beth Israel Deaconess Medical Center, Boston, Massachusetts, and Radboud University Nijmegen, Nijmegen, The Netherlands; ⁷Ger J. M. Pruijn, PhD: Radboud University Nijmegen, Nijmegen, The Netherlands; ⁸James B. Lilleker, MD: University of Manchester,

Manchester, UK, and Salford Royal NHS Foundation Trust, Salford, UK; ⁹Mark Roberts, MD: Salford Royal NHS Foundation Trust, Salford, UK; ¹⁰Michael F. Seldin, MD: University of California, Davis; ¹¹Jiri Vencovsky, MD: Charles University, Prague, Czech Republic; ¹²Katalin Danko, MD: University of Debrecen, Debrecen, Hungary; ¹³Vidya Limaye, PhD, FRACP: Royal Adelaide Hospital, Adelaide, South Australia, Australia; ¹⁴Albert Selva-O’Callaghan, MD: Vall d’Hebron General Hospital, Barcelona, Spain; ¹⁵Øyvind Molberg, MD: University of Oslo, Oslo, Norway; ¹⁶Olivier Benveniste, MD: Hôpital Pitié-Salpêtrière, UPMC, Paris, France; ¹⁷Timothy R. D. J. Radstake, MD: University Medical Center Utrecht, Utrecht, The Netherlands; ¹⁸Andrea Doria, MD: University of Padova, Padua, Italy; ¹⁹Jan De Bleecker, MD, Boel De Paepe, PhD: Ghent University Hospital, Ghent, Belgium; ²⁰Christian Gieger, PhD: Helmholtz Zentrum München, Neuherberg, Germany; ²¹Thomas Meitinger, MD, Juliane Winkelmann, MD: Technische Universität München, Munich, Germany, and Helmholtz Zentrum München, Neuherberg, Germany; ²²Christopher I. Amos, PhD: Dartmouth College, Hanover, New Hampshire; ²³Leonid Padyukov, MD: Karolinska Institutet, Stockholm, Sweden; ²⁴Hector Chinoy, MD: Central Manchester University Hospitals NHS Foundation Trust, University of Manchester, Manchester, UK.

Drs. Lamb and Chinoy contributed equally to this work.

Address correspondence to Simon Rothwell, PhD, Centre for Musculoskeletal Research, University of Manchester, 2.808 Stopford Building, Oxford Road, Manchester M13 9PT, UK. E-mail: s.rothwell@manchester.ac.uk

Submitted for publication September 12, 2016; accepted in revised form January 10, 2017.

Methods. A total of 252 Caucasian patients with IBM were recruited from 11 countries through the Myositis Genetics Consortium and compared with 1,008 ethnically matched controls. Classic HLA alleles and amino acids were imputed using SNP2HLA.

Results. The HLA region was confirmed as the most strongly associated region in IBM ($P = 3.58 \times 10^{-33}$). HLA imputation identified 3 independent associations (with HLA-DRB1*03:01, DRB1*01:01, and DRB1*13:01), although the strongest association was with amino acid positions 26 and 11 of the HLA-DRB1 molecule. No association with anti-cytosolic 5'-nucleotidase 1A-positive status was found independent of HLA-DRB1*03:01. There was no association of HLA genotypes with age at onset of IBM. Three non-HLA regions reached suggestive significance, including the chromosome 3 p21.31 region, an established risk locus for autoimmune disease, where a frameshift mutation in *CCR5* is thought to be the causal variant.

Conclusion. This is the largest, most comprehensive genetic association study to date in IBM. The data confirm that HLA is the most strongly associated region and identifies novel amino acid associations that may explain the risk in this locus. These amino acid associations differentiate IBM from polymyositis and dermatomyositis and may determine properties of the peptide-binding groove, allowing it to preferentially bind autoantigenic peptides. A novel suggestive association within the chromosome 3 p21.31 region suggests a role for *CCR5*.

Sporadic inclusion body myositis (IBM) is an acquired muscle disease characterized clinically by weakness and muscle wasting, predominantly of the quadriceps and long finger flexor muscles. While degenerative changes are recognized, there are also immune-mediated mechanisms at play, characterized by inflammatory features in muscle biopsy specimens and the presence of circulating autoantibodies. These autoantibodies include anti-Ro and a recently identified autoantibody directed against cytosolic 5'-nucleotidase 1A (anti-cN1A), which is present in approximately one-third of patients (1,2). While the primary cause of the disease remains unknown, genetic factors may influence disease susceptibility. A group of hereditary diseases that includes the hereditary inclusion body myopathies and other muscular dystrophies such as the myofibrillary myopathies may mimic clinical features of IBM (3). These diseases may also exhibit similar pathologic features, such as rimmed vacuoles and protein accumulations; clinical and histopathologic suspicion of these diseases should prompt appropriate genetic testing.

To date, the strongest genetic risk identified for IBM lies within the major histocompatibility complex (MHC), in particular with HLA-DRB1*03:01, an allele present on the 8.1 ancestral haplotype that is a risk factor for many

autoimmune diseases, including the idiopathic inflammatory myopathies (IIMs) (4). Other HLA-DRB1 alleles such as HLA-DRB1*01:01 and HLA-DRB1*13:01 have also been implicated in IBM, and genotypic combinations of these alleles have been reported to correlate with clinical phenotype (5).

Candidate gene studies in IBM have focused mainly on the MHC, and there are few validated associations outside of this region. Genes associated with neurodegenerative diseases such as Alzheimer's Disease have been examined in IBM, for example, the genes for β /A4-amyloid precursor protein and apolipoprotein E, although these studies frequently have shown negative or conflicting results (6-8). Other candidate gene approaches have focused on autoantibody targets (1) and genes previously implicated in hereditary inclusion body myopathies (9,10). However, those studies also have failed to find significant common associations.

We recently reported a genetic association study in polymyositis (PM) and dermatomyositis (DM) using the ImmunoChip array, a custom-designed, high-density genotyping chip that covers genes known to be associated with a variety of autoimmune diseases (11). Samples from patients with IBM were genotyped concurrently and were analyzed separately in this analysis using a previously described method of case-control matching to control for population differences. Using the ImmunoChip, we have conducted the largest genetic study to date in IBM to investigate potential associations with immune-related genes, and we have used imputation to refine associations within the MHC.

PATIENTS AND METHODS

Study populations. A total of 252 patients with IBM from 11 countries were recruited through the Myositis Genetics Consortium (MYOGEN). A list of MYOGEN study investigators in addition to the authors of this article is provided in Appendix A. Written informed consent was obtained from all patients with approval from research ethics boards at each participating center. Patients with IBM were included if they fulfilled the following criteria: Griggs ("definite" or "possible") (12), Medical Research Council ("pathologically defined," "clinically defined," or "possible") (13), or European Neuromuscular Centre ("clinico-pathologically defined," "clinically defined," or "probable") (14). Age at onset for UK patients with IBM was the age at onset of first symptoms as recorded in the clinical record.

Shared control samples from Sweden (the Epidemiological Investigation of Rheumatoid Arthritis study), Spain, and The Netherlands were provided by the Rheumatoid Arthritis Consortium International (15), with control samples from the UK provided by the Wellcome Trust Case Control Consortium (16). Control samples from Italy, Norway, Belgium, and France were provided by the International Multiple Sclerosis Genetics Consortium (17). Polish and Hungarian control samples were provided by the Celiac Consortium (18), and German control samples were provided by the KORAGEN consortium (19).

Table 1. Numbers of samples from patients with inclusion body myositis and ethnically matched controls included in the analysis after quality control, by country of origin*

	Patients	Controls
Australia	44	–
Belgium	6	23
Czech Republic	2	–
France	19	35
Germany	–	29
Hungary	2	7
Italy	2	44
The Netherlands	9	69
Norway	1	30
Poland	–	8
Sweden	31	97
Spain	8	28
UK	128	485
US	–	153
Total	252	1,008

* Control samples were shared from Immunochip consortia. Four controls for each patient were matched based on nearest neighbor by principal components analysis coordinates.

Genotyping and quality control. Genotyping was performed in accordance with Illumina's protocols in the UK (Centre for Genetics and Genomics Arthritis Research UK, University of Manchester, Manchester, UK) and the US (Feinstein Institute for Medical Research, Manhasset, NY). Standard quality control was performed as described previously (11). Four controls for each case were matched for ethnicity using principal components analysis coordinates using a method described previously (20).

Statistical analysis. Statistical analyses were performed in Plink version 1.7 (<http://zzz.bwh.harvard.edu/plink/index.shtml>) using a logistic regression applying an additive model. Sex and population differences were controlled for by including sex and the top 10 principal components as covariates. Significance was defined as $P < 5 \times 10^{-8}$. We also reported variants reaching a second tier of significance of $P < 2.25 \times 10^{-5}$, calculated using the genetic Type I Error Calculator (21). Odds ratios (ORs) are provided with 95% confidence intervals (95% CIs).

To investigate associations with HLA and age at onset, linear regressions were used, with P values less than 0.05 considered significant. Analyses were carried out using Stata statistical software version 13.1 (StataCorp).

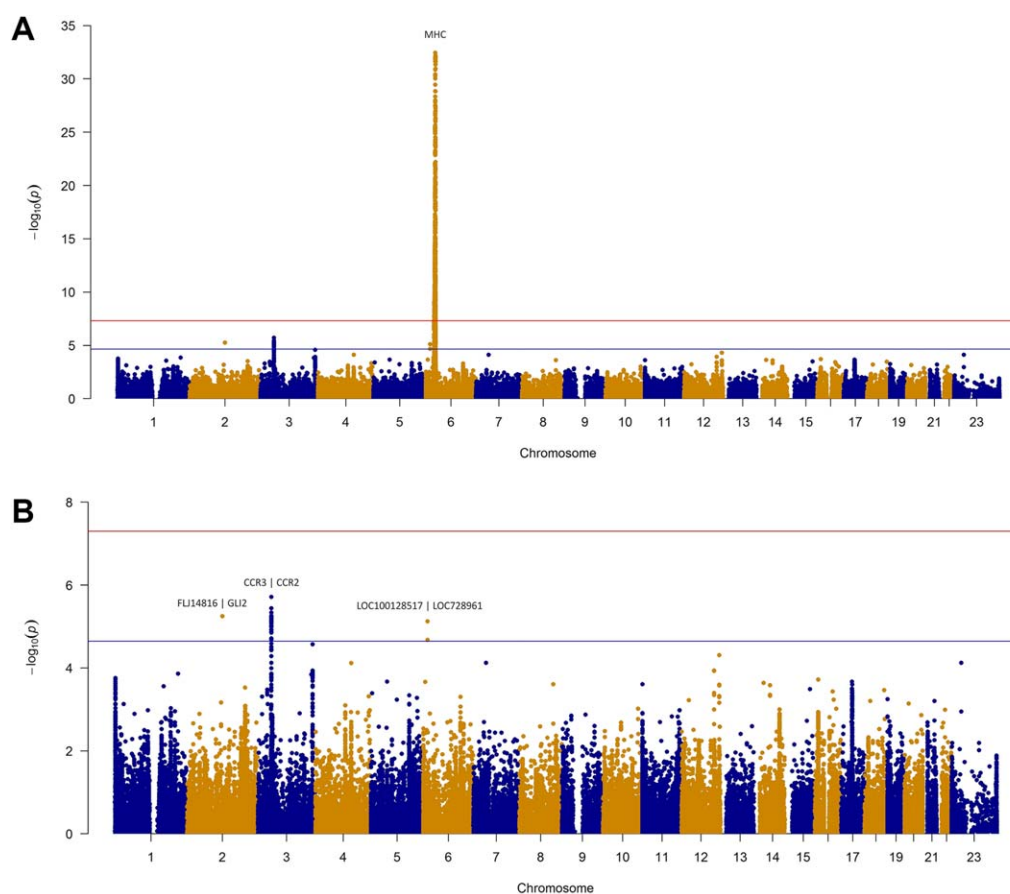


Figure 1. Manhattan plots of the inclusion body myositis (IBM) analysis. Red line represents genome-wide level of significance ($P < 5 \times 10^{-8}$); blue line represents suggestive significance ($P < 2.25 \times 10^{-5}$). Shown is the analysis of 252 patients with IBM and 1,008 matched controls. **A**, Manhattan plot of the total Immunochip analysis. **B**, Manhattan plot of the IBM analysis with the major histocompatibility complex (MHC) region (chromosome 6 25–35) removed for visualization purposes. Color figure can be viewed in the online issue, which is available at <http://onlinelibrary.wiley.com/journal/doi/10.1002/art.40045/abstract>.

Functional annotation. Evidence for functional effects and expression quantitative trait loci (eQTLs) were investigated for the lead single-nucleotide polymorphisms (SNPs) in each region, and SNPs in high linkage disequilibrium (LD) ($r^2 \geq 0.8$) were obtained from Phase 3 1000 Genomes data using LDlink (22).

MHC imputation and association analysis. Classic HLA alleles and corresponding amino acid sequences were imputed from ImmunoChip SNP data using the SNP2HLA program as described previously (11). Significance was defined as $P < 6.8 \times 10^{-6}$ based on a Bonferroni correction of the 7,323 markers imputed by SNP2HLA (23). For consistency, the most associated variant was used in the stepwise conditional analysis. Molecular graphics were generated and analyses were performed with the University of California, San Francisco (UCSF) Chimera package version 1.10.2 (Resource for Biocomputing, Visualization, and Informatics at UCSF).

Anti-cN1A detection. Enzyme-linked immunosorbent assay detection of anti-cN1A antibodies was performed using the optimized protocol as described previously (24). Briefly, biotinylated peptides were incubated on Streptawell High Bind microplates (Roche) for 1 hour at 37°C to immobilize the peptides. Unbound peptides were removed by washing the microplates 3 times. Diluted patient serum was then added to the microplate followed by incubation at 37°C for 1 hour. Unbound antigen was removed by further washing the microplate 5 times. Diluted rabbit anti-human Ig was then added, and the plate was incubated for 1 hour at 37°C followed by a further 5 washes. Finally, the bound antibodies were visualized by adding substrate solution, and the reaction was stopped after 5 minutes by adding a stop solution. Signals were quantified by determining optical densities at 450 nm (OD_{450 nm}). The OD_{450 nm} value corresponding to the highest Youden Index [calculated as: $([\text{sensitivity}/100] + [\text{specificity}/100] - 1)$] (25) at which $\geq 98\%$ specificity was achieved was chosen for each peptide. Sera were assessed as reactive if they were above the established cutoff value for at least one of the peptide antigens (24).

RESULTS

Genotyping quality control. After stringent SNP and sample quality control, we analyzed 104,636 genetic

variants in 252 patients with IBM and 1,008 ethnically matched controls (Table 1). Including the top 10 principal components as covariates and calculating the genomic inflation on a set of null SNPs gave a λ_{gc} of 1.04, indicating that patients and controls were well matched for ethnicity (see Supplementary Figure 1, available on the *Arthritis & Rheumatology* web site at <http://onlinelibrary.wiley.com/doi/10.1002/art.40045/abstract>).

HLA is the most strongly associated region in IBM. SNPs within the MHC region were the only variants reaching genome-wide significance of $P < 5 \times 10^{-8}$ (Figure 1A). The strongest association was with rs3129950 ($P = 3.58 \times 10^{-33}$), a SNP intronic of *LOC101929163* and 3' of *BTNL2* (Table 2). As the ImmunoChip contains high-density SNP coverage across the MHC, this region was subsequently analyzed separately using HLA imputation in an attempt to refine this association to a functional gene. Initially, genes independent of the MHC were investigated that reached a suggestive level of significance.

Suggestive significance of 3 non-HLA associations. Three non-HLA regions reached our second tier of significance (defined as $P < 2.25 \times 10^{-5}$) calculated using the genetic Type I Error Calculator (21). Figure 1B shows the Manhattan plot with the MHC region removed for visualization purposes. The most convincing associations were in the chromosome 3 p21.31 region, where 49 SNPs reached the suggestive level of significance (Figure 2). The strongest association was upstream of *CCR2* (rs112088397, $P = 1.93 \times 10^{-6}$, OR 0.42 [95% CI 0.29–0.60]); however, this haplotype contains many genes including *CCR3*, *CCR2*, *CCR5*, and *CCRL2*.

Potentially functional variants were investigated for all non-HLA SNPs reaching suggestive significance and those tagged by the lead SNP ($r^2 \geq 0.8$) (see Supplementary

Table 2. Analysis of the 252 patients with inclusion body myositis compared to 1,008 ethnically matched controls*

Gene region	Chr.	Position	SNP	Minor allele	MAF in patients	MAF in controls	<i>P</i>	OR (95% CI)	Localization of LD to nearest genes ($r^2 \geq 0.9$)
<i>MHC</i>	6	32358201	rs3129950	C	0.34	0.11	$3.58 \times 10^{-33}\ddagger$	5.69 (4.28–7.55)	<i>MHC</i>
<i>CCR3/CCR2</i>	3	46389462	rs112088397	T	0.08	0.16	$1.93 \times 10^{-6}\ddagger$	0.42 (0.29–0.60)	Downstream of <i>CCR3</i> to intron 2 of <i>LTF</i> ; incorporating <i>CCR2</i> , <i>CCR5</i> , and <i>CCRL2</i>
<i>FLJ14816/GLI2</i>	2	121338584	rs1880542	T	0.56	0.45	$5.66 \times 10^{-6}\ddagger$	1.60 (1.31–1.96)	Intergenic of <i>FLJ14816</i> and <i>GLI2</i>
<i>LOC100128517/LOC728961</i>	6	14560180	rs9396510	T	0.11	0.05	$7.52 \times 10^{-6}\ddagger$	2.23 (1.57–3.17)	Intergenic of <i>LOC100128517</i> and <i>LOC728961</i>

* Coordinates are based on the human assembly GRCh37. Chr. = chromosome; SNP = single-nucleotide polymorphism; MAF = minor allele frequency; OR = odds ratio; 95% CI = 95% confidence interval; LD = linkage disequilibrium.

† Reported at genome-wide significance ($P < 5 \times 10^{-8}$).

‡ Reported at second tier of significance ($P < 2.25 \times 10^{-5}$).

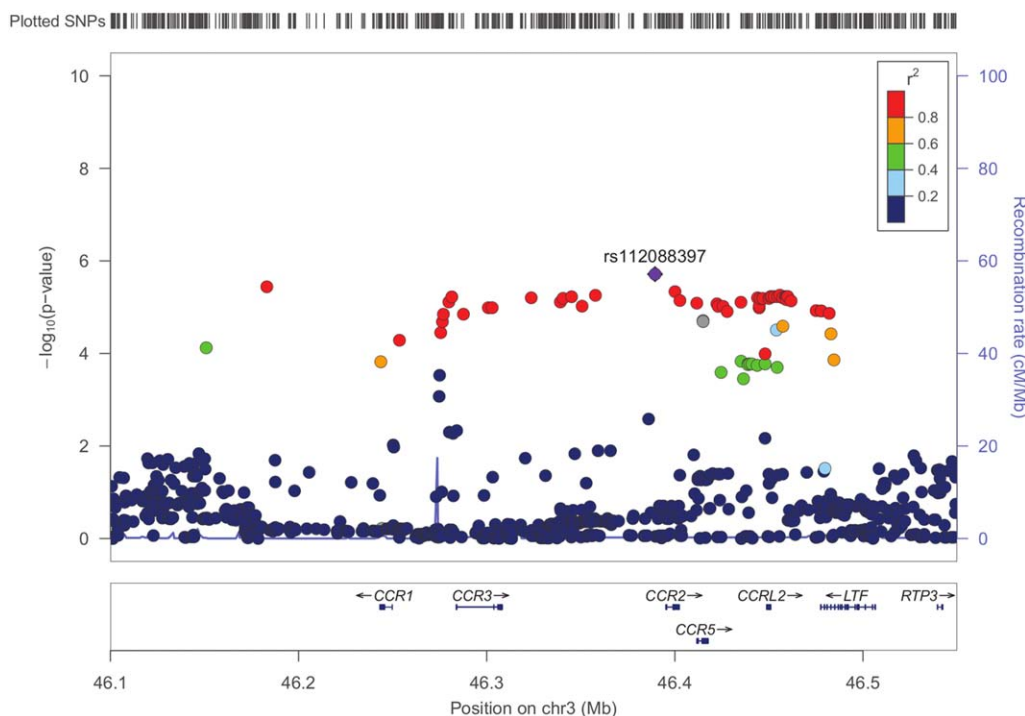


Figure 2. Regional association plot of the chromosome 3 (Chr3) p21.31 region in inclusion body myositis. The plot shows strength of association ($-\log_{10}[P]$) against chromosomal position. The most strongly associated single-nucleotide polymorphism (SNP) is colored purple, with other SNPs colored by the degree of linkage disequilibrium (r^2). Local recombination rates estimated from the HapMap population of Utah residents with ancestry from northern and western Europe are plotted against the secondary y-axis, showing recombination hotspots across the region.

Tables 1–3, <http://onlinelibrary.wiley.com/doi/10.1002/art.40045/abstract>). Multiple SNPs within the chromosome 3 p21.31 region had evidence for eQTLs for the expression of *CCR5* in monocytes (26). There was 1 missense SNP in the chromosome 3 p21.31 region (rs6441977) that was predicted to be “benign” by PolyPhen-2 (27); however, a frameshift mutation (rs333) is a known variant that results in a 32-bp deletion and a nonfunctional receptor. Conditional analysis on this locus did not identify additional independent variants.

HLA imputation reveals association with HLA-DRB1. To refine associations within the MHC region, HLA alleles were imputed from SNP genotyping information using SNP2HLA (23). Variants reaching statistical significance ($P < 6.8 \times 10^{-6}$) after each round of conditioning are included in Supplementary Tables 4–6, <http://onlinelibrary.wiley.com/doi/10.1002/art.40045/abstract>. The strongest associations were with alleles that are part of the 8.1 ancestral haplotype, with HLA-DRB1*03:01 reaching $P = 5.77 \times 10^{-34}$ (OR 7.97 [95% CI 5.88–10.95]). Due to strong LD within the MHC, other alleles within this haplotype such as HLA-DQB1*02:02 and HLA-B*08:01 also had strong associations in this analysis; however, these lost significance after conditioning on the effect of HLA-DRB1*03:01. Conducting

stepwise conditional analysis on significant HLA-DRB1 alleles, an independent effect was seen with HLA-DRB1*01:01 ($P = 1.56 \times 10^{-16}$, OR 4.64 [95% CI 3.33–6.49]). A further independent effect was seen with HLA-DRB1*13:01 ($P = 3.28 \times 10^{-8}$, OR 3.19 [95% CI 2.14–4.72]).

As risk may lie within multiple HLA alleles, we imputed amino acids to investigate whether shared positions within risk alleles might explain the risk at this locus (see Supplementary Tables 7 and 8, <http://onlinelibrary.wiley.com/doi/10.1002/art.40045/abstract>). Amino acid position 26 of HLA-DRB1 was associated more significantly than a single classic HLA allele ($P = 5.22 \times 10^{-43}$), with risk attributable to a tyrosine at this position (OR 3.83 [95% CI 2.80–5.29]) (Table 3). This contrasts with PM and DM, where HLA-DRB1 amino acid position 77 was the most strongly associated position (Table 3). Conditioning on the effects of position 26 in IBM revealed an independent effect of position 11 of HLA-DRB1 ($P = 3.80 \times 10^{-13}$). At this position, serine is the most common amino acid in the population and was therefore used as the reference. As many other amino acids are protective at this position, we can infer that serine confers the greatest risk. No further amino acid positions were statistically significant after conditioning on positions 26 and 11 of HLA-DRB1.

Table 3. Independent associations of HLA-DRB1 amino acids in clinical subgroups of idiopathic inflammatory myopathy*

Association, marker	<i>P</i>	OR (95% CI)
Most associated in inclusion body myositis		
Position 26	Omnibus 5.22×10^{-43}	
Phenylalanine	Reference†	1
Tyrosine	1.19×10^{-16}	3.83 (2.8–5.29)
Leucine	0.32	0.63 (0.24–1.48)
Position 11		
Serine	Omnibus 3.80×10^{-13}	
Proline	Reference†	1
Valine	9.06×10^{-5}	0.42 (0.27–0.64)
Glycine	2.25×10^{-6}	0.33 (0.2–0.51)
Leucine	4.46×10^{-6}	0.26 (0.14–0.45)
Aspartic acid	0.03	2.75 (1.15–7.5)
	1.41×10^{-3}	0.13 (0.03–0.39)
Most associated in polymyositis‡		
Position 77	Omnibus 1.65×10^{-80}	
Threonine	Reference†	1
Asparagine	1.65×10^{-80}	2.93 (2.53–3.17)
Most associated in dermatomyositis‡		
Position 77	Omnibus 1.37×10^{-36}	
Threonine	Reference†	1
Asparagine	1.37×10^{-36}	2.14 (1.90–2.41)

* *P* values and odds ratios (ORs) with 95% confidence intervals (95% CIs) were calculated in a logistic regression.

† Reference amino acid is taken as the most frequent in the population.

‡ For comparative purposes, HLA-DRB1 amino acid association statistics for polymyositis and dermatomyositis are shown (from ref. 11).

No distinct HLA association with anti-cN1A positivity. Anti-cN1A antibodies were detected in 36 of the 104 patients serologically tested (35%). After quality control, HLA imputation was conducted on 35 anti-cN1A-positive patients and 140 healthy controls, and the most significant 4-digit classic HLA association was found with HLA-DRB1*03:01 ($P = 5.62 \times 10^{-8}$, OR 11.52 [95% CI 4.95–29.29]) (see Supplementary Table 9, <http://onlinelibrary.wiley.com/doi/10.1002/art.40045/abstract>). After stepwise conditional analysis, we did not find any additional independent effects. We then compared the 35 anti-cN1A-positive patients with 68 anti-cN1A-negative patients, and we found no significant differences in HLA associations between these groups (data not shown).

No effect of HLA-DRB1 allele interactions on age at onset. Previous studies have suggested that HLA-DRB1 alleles may have disease-modifying effects in IBM, with the HLA-DRB1*03/*01 genotype conferring an earlier age at onset and more severe muscle weakness (5,28). HLA and age at onset data were available for 124 UK patients with IBM. Linear regression was used to analyze the relationship of HLA-DRB1 alleles with age at onset. No significant associations were found with risk alleles HLA-DRB1*01:01, DRB1*03:01, or DRB1*13:01 when

these were analyzed separately or in combination (see Supplementary Table 10, <http://onlinelibrary.wiley.com/doi/10.1002/art.40045/abstract>).

DISCUSSION

This is the largest genetic association study to date in Caucasian patients with IBM. The results confirm that HLA is the most strongly associated region, identify multiple HLA-DRB1 alleles conferring risk, and suggest amino acid positions that may explain the risk in this locus. A novel suggestive association within the chromosome 3 p21.31 locus indicates genetic overlap with other autoimmune diseases and identifies a potentially functional variant that may contribute to the pathogenesis of IBM.

HLA imputation confirmed that the strongest risk within this region lies with HLA-DRB1*03:01. Stepwise conditional analyses revealed additional independent associations with HLA-DRB1*01:01 and HLA-DRB1*13:01, suggesting that the HLA-DRB1 gene is important in susceptibility to IBM. In contrast to previous studies, there were no significant associations of age at onset with HLA-DRB1 alleles. Other reported disease-modifying effects of HLA alleles in IBM, such as with disease severity and lower quadriceps muscle strength, were not investigated due to a lack of consistent clinical data across this multinational, multicenter study. Previous studies have also investigated additional risk factors present on the MHC, such as polymorphisms in the gene for Notch-4 (29) or carriage of secondary HLA-DRB loci such as HLA-DRB3 (30). Although not explicitly investigated in the present study, these associations are in strong linkage with the 8.1 ancestral haplotype, and we do not expect our data to differentiate between these risk factors. Conditioning on the presence of HLA-DRB1, no additional genetic variants within the MHC region were associated with IBM. The frequency of genotypes among patients with IBM (see Supplementary Table 10, <http://onlinelibrary.wiley.com/doi/10.1002/art.40045/abstract>) suggests that patients homozygous for HLA-DRB1*03:01 and DRB1*01:01 are at lower risk of disease. The contribution of nonadditive effects across HLA alleles has been reported in several autoimmune diseases and may explain higher risk for heterozygote individuals (31). The small numbers in this cohort mean that the study is underpowered to statistically test this in IBM.

As multiple HLA-DRB1 alleles were associated with IBM, we investigated whether there were shared amino acid positions within HLA-DRB1 risk alleles that might explain the risk at this locus. Position 26 of HLA-DRB1 was more strongly associated than a classic HLA allele alone ($P = 5.22 \times 10^{-43}$ versus $P = 5.77 \times 10^{-34}$). An additional independent effect was found



Figure 3. Locations of positions 26 and 11 of HLA-DRB1 within DR β -chain 1. Positions 26 and 11 are independently associated with inclusion body myositis. **Arrows** indicate the locations of the risk-conferring amino acids Tyr²⁶ and Ser¹¹ within the β -sheet floor of DR β -chain 1. Color figure can be viewed in the online issue, which is available at <http://onlinelibrary.wiley.com/journal/doi/10.1002/art.40045/abstract>.

with position 11 of HLA-DRB1. Positions 11 and 26 have been associated previously with seropositive autoimmune disease, such as systemic lupus erythematosus (32), which suggests that these positions may determine properties of the HLA-DRB1 peptide-binding groove, allowing it to preferentially bind autoantigenic peptides (Figure 3). Certain amino acids, such as a tyrosine at position 26 and serine at position 11, were associated with risk in this analysis; however, a lack of statistical power means that we were unable to completely characterize the effects of certain amino acids in this molecule. It is interesting to note that while IBM shares HLA-DRB1*03:01 as a significant risk factor with other inflammatory myopathies, such as PM and DM, the amino acid associations differ between these subtypes. In PM and DM, amino acid position 74 of HLA-DRB1 explains almost all of the risk within this gene (11). These differences in amino acid associations may be explained by the additional independent effects of HLA-DRB1*01:01 and HLA-DRB1*13:01 in IBM that are not associated with PM or DM. Understanding the peptide-binding specificities of these risk alleles may inform future research along with the potential identification of unique autoantigens presented to the immune system in IBM.

We investigated potential associations between specific HLA alleles and the newly described anti-cN1A

antibody. The significant association observed with HLA-DRB1*03:01 and the anti-cN1A antibody may be due to an increased association with HLA-DRB1*03:01 as a whole in IBM. No significant differences in HLA associations were observed between anti-cN1A-positive and anti-cN1A-negative patients. A recent study in an Australian cohort of patients also failed to show any association with anti-cN1A antibodies and MHC class II alleles other than HLA-DR3 (33). Furthermore, we do not have complete data on co-occurrence of anti-cN1A and other antibodies, such as anti-Ro, which also has a strong HLA-DR3 association (34). It may be that a significantly larger sample size is needed to detect novel HLA associations in patients with anti-cN1A antibodies.

The ImmunoChip is a custom-designed chip that contains a dense set of SNPs covering 186 loci based on evidence of association with 12 different autoimmune and inflammatory diseases (18). Therefore, the current study tests a specific hypothesis that IBM shares genetic overlap with other autoimmune diseases. The current study has not comprehensively tested other loci that have been purported to be associated with IBM, such as those predisposing to hereditary inclusion body myopathies or loci associated with other degenerative diseases. The observation that the MHC region is strongly associated, and evidence of association with other genes on

this array, suggests an immune-mediated component to IBM. It is not clear whether this represents a primary or secondary involvement.

No non-HLA loci investigated reached genome-wide significance, although this is to be expected in a study of this size. While comparatively large for IBM, this study is underpowered to detect associations of small effect sizes that are expected in genetic studies of conditions with complex etiologies. Three loci did reach a suggestive level of significance ($P < 2.25 \times 10^{-5}$). Of particular interest is the chromosome 3 p21.31 region, which is known to be associated with multiple autoimmune diseases such as celiac disease, type 1 diabetes mellitus, and Behçet's disease and is suggestively associated in juvenile idiopathic arthritis (JIA) (35–38). The strongest association in this region was with rs112088397, which tags a large haplotype block where many additional SNPs reached a suggestive level of significance and is the same risk haplotype as that reported in JIA ($r^2 = 0.87$) (35,39). The variant rs112088397 in our study is found at a higher frequency in controls (minor allele frequency [MAF] of 0.08 for patients versus MAF of 0.16 for controls) and is therefore protective against IBM (OR 0.42 [95% CI 0.29–0.60]). Proxies for rs112088397 fall within multiple candidate genes including *CCR1*, *CCR3*, *CCR2*, *CCR5*, and *CCRL2*, and therefore it is difficult to identify the causal variant in this region. Interestingly, this haplotype contains a frameshift mutation (rs333) that results in a 32-bp deletion variant (*CCR5*Δ32) and a non-functional receptor. The most strongly associated non-HLA SNP in IBM is in high LD with this frameshift mutation ($r^2 = 0.86$); furthermore, a number of SNPs in this region are eQTLs for the expression of *CCR5* in monocytes (26).

CCR5 binds a number of proinflammatory chemokines that are up-regulated in IIMs and IBM, such as *CCL3* (macrophage inflammatory protein 1α [MIP-1α]), *CCL4* (MIP-1β), and *CCL5* (RANTES). *CCR5* has been shown to be predominantly expressed on monocytes, macrophages, and T cells, up-regulated in IBM muscle tissue, and localized on inflammatory cells invading nonnecrotic muscle fibers (40,41). Interestingly, in rheumatoid arthritis (RA) the density of *CCR5* molecules on the T cell surface determines efficiency of its function as a chemokine receptor and intensity of T cell migration toward RA synoviocytes (42). We hypothesize that *CCR5* is important in the pathogenesis of IBM, consistent with studies showing an up-regulation of *CCR5* in muscle tissue of patients. Individuals with the protective rs333 frameshift mutation described above will carry a non-functional variant and/or decreased expression of *CCR5*, resulting in reduced migration of T cells into muscle fiber.

It is interesting that the suggestive association with the chromosome 3 p21.31 region in this study was found

with only 252 individuals. This may be explained by the stronger effect size in IBM compared to JIA (0.42 versus 0.78, respectively) (35), and although IBM is a rare disease, it may mean that replication of this association is possible with ongoing sample collection. Due to the rarity of IBM, it is difficult to ascertain the sample sizes needed for genome-wide association studies; therefore, next-generation sequencing could be an approach to detect rare, potentially functional variants of large effect size. Sequencing studies are currently underway taking either a candidate gene approach (10) or a hypothesis-free approach sequencing exomes of a large number of patients with IBM (9). The present study has not comprehensively tested other loci that have been purported to be associated with IBM, such as those predisposing to hereditary inclusion body myopathies or loci associated with other degenerative diseases. In a disease in which the etiology is unknown, sequencing could be successful in identifying novel variants and/or pathways involved in disease pathogenesis.

In summary, we have conducted the largest genetic association study to date in Caucasian patients with IBM, confirming the involvement of an immune-mediated genetic component of this understudied disease. Studies in the genetics of IBM are hampered by small sample sizes due to the rarity of this disease. Ongoing sample collection, as well as further international collaborative studies, will allow us to further characterize genetic influences on susceptibility to IBM.

ACKNOWLEDGMENTS

We thank all of the patients and their families who contributed to this study. We thank Mr. Paul New (Salford Royal Foundation Trust) for ethical and technical support. The authors would like to acknowledge the assistance given by IT Services and the use of the Computational Shared Facility at The University of Manchester. A list of other acknowledgments is included in Supplementary Materials, available on the *Arthritis & Rheumatology* web site at <http://onlinelibrary.wiley.com/doi/10.1002/art.40045/abstract>.

AUTHOR CONTRIBUTIONS

All authors were involved in drafting the article or revising it critically for important intellectual content, and all authors approved the final version to be published. Dr. Rothwell had full access to all of the data in the study and takes responsibility for the integrity of the data and the accuracy of the data analysis.

Study conception and design. Rothwell, Cooper, Lundberg, Gregersen, Ollier, Lamb, Chinoy.

Acquisition of data. Rothwell, Cooper, Lundberg, Gregersen, Hanna, Machado, Herbert, Pruijn, Roberts, Vencovsky, Danko, Limaye, Selva-O'Callaghan, Platt, Molberg, Benveniste, Radstake, Doria, De Bleecker, De Paepe, Gieger, Meitinger, Winkelmann, Padyukov, Lee, Lamb, Chinoy.

Analysis and interpretation of data. Rothwell, Cooper, Lundberg, Lilleker, Bowes, Seldin, Amos, Ollier, Padyukov, Lamb, Chinoy.

REFERENCES

- Larman HB, Salajegheh M, Nazareno R, Lam T, Sauld J, Steen H, et al. Cytosolic 5'-nucleotidase 1A autoimmunity in sporadic inclusion body myositis. *Ann Neurol* 2013;73:408–18.
- Pluk H, van Hoeve BJ, van Dooren SH, Stammen-Vogelzangs J, van der Heijden A, Schelhaas HJ, et al. Autoantibodies to cytosolic 5'-nucleotidase 1A in inclusion body myositis. *Ann Neurol* 2013;73:397–407.
- Needham M, Mastaglia FL. Inclusion body myositis: current pathogenetic concepts and diagnostic and therapeutic approaches. *Lancet Neurol* 2007;6:620–31.
- Miller FW, Chen W, O'Hanlon TP, Cooper RG, Vencovsky J, Rider LG, et al. Genome-wide association study identifies HLA 8.1 ancestral haplotype alleles as major genetic risk factors for myositis phenotypes. *Genes Immun* 2015;16:470–80.
- Rojana-udomsart A, James I, Castley A, Needham M, Scott A, Day T, et al. High-resolution HLA-DRB1 genotyping in an Australian inclusion body myositis (s-IBM) cohort: an analysis of disease-associated alleles and diplotypes. *J Neuroimmunol* 2012;250:77–82.
- Sivakumar K, Cervenakova L, Dalakas MC, Leon-Monzon M, Isaacson SH, Nagle JW, et al. Exons 16 and 17 of the amyloid precursor protein gene in familial inclusion body myopathy. *Ann Neurol* 1995;38:267–9.
- Needham M, Hooper A, James I, van Bockxmeer F, Corbett A, Day T, et al. Apolipoprotein ε alleles in sporadic inclusion body myositis: a reappraisal. *Neuromuscul Disord* 2008;18:150–2.
- Gang Q, Bettencourt C, Machado PM, Fox Z, Brady S, Healy E, et al. The effects of an intronic polymorphism in TOMM40 and APOE genotypes in sporadic inclusion body myositis. *Neurobiol Aging* 2015;36:1766.e1–3.
- Gang Q, Bettencourt C, Machado P, Hanna MG, Houlden H. Sporadic inclusion body myositis: the genetic contributions to the pathogenesis. *Orphanet J Rare Dis* 2014;9:88.
- Wehl CC, Baloh RH, Lee Y, Chou TF, Pittman SK, Lopate G, et al. Targeted sequencing and identification of genetic variants in sporadic inclusion body myositis. *Neuromuscul Disord* 2015;25:289–96.
- Rothwell S, Cooper RG, Lundberg IE, Miller FW, Gregersen PK, Bowes J, et al. Dense genotyping of immune-related loci in idiopathic inflammatory myopathies confirms HLA alleles as the strongest genetic risk factor and suggests different genetic background for major clinical subgroups. *Ann Rheum Dis* 2016;75:1558–66.
- Griggs RC, Askanas V, DiMauro S, Engel A, Karpati G, Mendell JR, et al. Inclusion body myositis and myopathies. *Ann Neurol* 1995;38:705–13.
- Hilton-Jones D, Miller A, Parton M, Holton J, Sewry C, Hanna MG. Inclusion body myositis. MRC Centre for Neuromuscular Diseases, IBM workshop, London, 13 June 2008. *Neuromuscul Disord* 2010;20:142–7.
- Rose MR. 188th ENMC International Workshop: inclusion body myositis, 2–4 December 2011, Naarden, The Netherlands. *Neuromuscul Disord* 2013;23:1044–55.
- Eyre S, Bowes J, Diogo D, Lee A, Barton A, Martin P, et al. High-density genetic mapping identifies new susceptibility loci for rheumatoid arthritis. *Nat Genet* 2012;44:1336–40.
- Wellcome Trust Case Control Consortium. Genome-wide association study of 14,000 cases of seven common diseases and 3,000 shared controls. *Nature* 2007;447:661–78.
- International Multiple Sclerosis Genetics Consortium, Beecham AH, Patsopoulos NA, Xifara DK, Davis MF, Kempainen A, et al. Analysis of immune-related loci identifies 48 new susceptibility variants for multiple sclerosis. *Nat Genet* 2013;45:1353–60.
- Trynka G, Hunt KA, Bockett NA, Romanos J, Mistry V, Szperl A, et al. Dense genotyping identifies and localizes multiple common and rare variant association signals in celiac disease. *Nat Genet* 2011;43:1193–201.
- Wichmann HE, Gieger C, Illig T, for the MONICA/KORA Study Group. KORA-gen: resource for population genetics, controls and a broad spectrum of disease phenotypes. *Gesundheitswesen* 2005;67 Suppl 1:S26–30.
- Gregersen PK, Kosoy R, Lee AT, Lamb J, Sussman J, McKee D, et al. Risk for myasthenia gravis maps to a ¹⁵¹Pro→Ala change in TNIP1 and to HLA-B*08. *Ann Neurol* 2012;72:927–35.
- Li MX, Yeung JMY, Cherny SS, Sham PC. Evaluating the effective numbers of independent tests and significant p-value thresholds in commercial genotyping arrays and public imputation reference datasets. *Hum Genet* 2012;131:747–56.
- Machiela MJ, Chanock SJ. LDlink: A web-based application for exploring population-specific haplotype structure and linking correlated alleles of possible functional variants. *Bioinformatics* 2015;31:3555–7.
- Jia X, Han B, Onengut-Gumuscu S, Chen WM, Concannon PJ, Rich SS, et al. Imputing amino acid polymorphisms in human leukocyte antigens. *PLoS One* 2013;8:e64683.
- Herbert MK, Stammen-Vogelzangs J, Verbeek MM, Rietveld A, Lundberg IE, Chinoy H, et al. Disease specificity of autoantibodies to cytosolic 5'-nucleotidase 1A in sporadic inclusion body myositis versus known autoimmune diseases. *Ann Rheum Dis* 2016;75:696–701.
- Youden WJ. Index for rating diagnostic tests. *Cancer* 1950;3:32–5.
- Zeller T, Wild P, Szymczak S, Rotival M, Schillert A, Castagne R, et al. Genetics and beyond: the transcriptome of human monocytes and disease susceptibility. *PLoS One* 2010;5:e10693.
- Adzhubei I, Jordan DM, Sunyaev SR. Predicting functional effect of human missense mutations using PolyPhen-2. *Curr Protoc Hum Genet* 2013;7:7.20.
- Mastaglia FL, Needham M, Scott A, James I, Zilko P, Day T, et al. Sporadic inclusion body myositis: HLA-DRB1 allele interactions influence disease risk and clinical phenotype. *Neuromuscul Disord* 2009;19:763–5.
- Scott AP, Laing NG, Mastaglia F, Dalakas M, Needham M, Allcock RJ. Investigation of NOTCH4 coding region polymorphisms in sporadic inclusion body myositis. *J Neuroimmunol* 2012;250:66–70.
- Rojana-udomsart A, Mitrapant C, James I, Witt C, Needham M, Day T, et al. Analysis of HLA-DRB3 alleles and supertypal genotypes in the MHC class II region in sporadic inclusion body myositis. *J Neuroimmunol* 2013;254:174–7.
- Lenz TL, Deutsch AJ, Han B, Hu X, Okada Y, Eyre S, et al. Widespread non-additive and interaction effects within HLA loci modulate the risk of autoimmune diseases. *Nat Genet* 2015;47:1085–90.
- Kim K, Bang SY, Lee HS, Okada Y, Han B, Saw WY, et al. The HLA-DRβ1 amino acid positions 11-13-26 explain the majority of SLE-MHC associations. *Nat Commun* 2014;5:5902.
- Limaye VS, Lester S, Blumbergs P, Greenberg SA. Anti-C N1A antibodies in South Australian patients with inclusion body myositis. *Muscle Nerve* 2016;53:654–5.
- Provost TT, Watson R. Anti-Ro(SS-A) HLA-DR3-positive women: the interrelationship between some ANA negative, SS, SCLE, and NLE mothers and SS/LE overlap female-patients. *J Invest Dermatol* 1993;100:S14–20.
- Hinks A, Cobb J, Marion MC, Prahallad S, Sudman M, Bowes J, et al. Dense genotyping of immune-related disease regions identifies 14 new susceptibility loci for juvenile idiopathic arthritis. *Nat Genet* 2013;45:664–9.
- Dubois PC, Trynka G, Franke L, Hunt KA, Romanos J, Curtotti A, et al. Multiple common variants for celiac disease influencing immune gene expression. *Nat Genet* 2010;42:295–302.
- Kirino Y, Bertsias G, Ishigatsubo Y, Mizuki N, Tugal-Tutkun I, Seyahi E, et al. Genome-wide association analysis identifies new susceptibility loci for Behçet's disease and epistasis between HLA-B*51 and ERAP1. *Nat Genet* 2013;45:202–7.
- Onengut-Gumuscu S, Chen WM, Burren O, Cooper NJ, Quinlan AR, Mychaleckyj JC, et al. Fine mapping of type 1 diabetes susceptibility loci and evidence for colocalization of causal variants with lymphoid gene enhancers. *Nat Genet* 2015;47:381–6.

39. Hinks A, Martin P, Flynn E, Eyre S, Packham J, Childhood Arthritis Prospective Study (CAPS), UKRAG Consortium, BSPAR Study Group, et al. Association of the CCR5 gene with juvenile idiopathic arthritis. *Genes Immun* 2010;11:584–9.
40. Civatte M, Bartoli C, Schleinitz N, Chetaille B, Pellissier JF, Figarella-Branger D. Expression of the β chemokines CCL3, CCL4, CCL5 and their receptors in idiopathic inflammatory myopathies. *Neuropathol Appl Neurobiol* 2005;31:70–9.
41. De Paepe B, de Bleecker JL. β -chemokine receptor expression in idiopathic inflammatory myopathies. *Muscle Nerve* 2005;31:621–7.
42. Desmetz C, Lin YL, Mettling C, Portalès P, Noël D, Clot J, et al. Cell surface CCR5 density determines the intensity of T

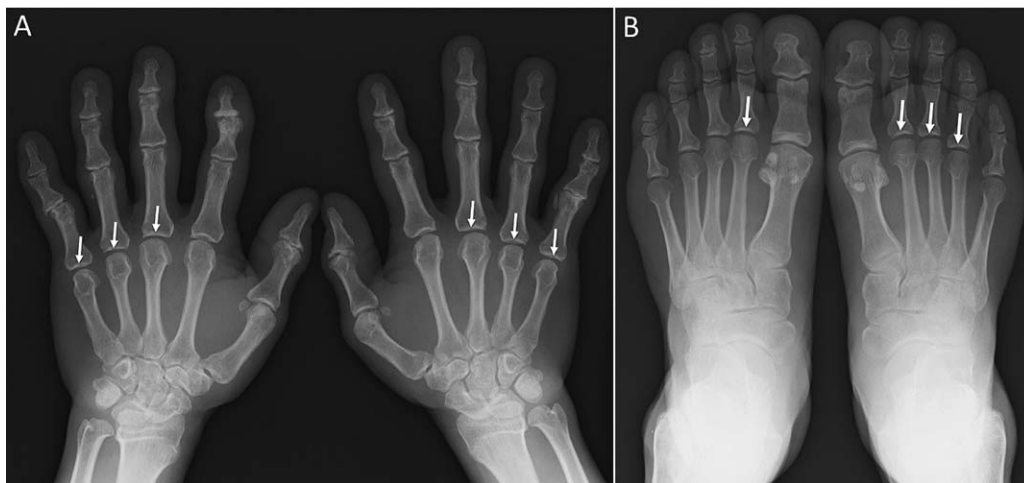
cell migration towards rheumatoid arthritis synoviocytes. *Clin Immunol* 2007;123:148–54.

APPENDIX A: MYOGEN INVESTIGATORS

Study investigators of the Myositis Genetics Consortium, in addition to the authors of this article, are as follows: Drs. Christopher Denton (Royal Free Hospital, London, UK), Karina Gheorghe (Karolinska Institutet, Stockholm, Sweden), David Hilton-Jones (John Radcliffe Hospital, Oxford, UK), Patrick Kiely (St. George's Hospital, London, UK), and Herman Mann (Institute of Rheumatology, Prague, Czech Republic).

DOI: 10.1002/art.40078

Clinical Images: Widening of joint spaces in acromegaly



The patient, a previously healthy 51-year-old man, presented with migratory joint pain on the lower extremities lasting for several months. His shoe size had increased by 0.6 inches. Physical examination revealed enlargement of the fingers and toes. Radiography of the hands (A) and feet (B) showed widening of the joint spaces on some of the metacarpophalangeal and metatarsophalangeal joints (arrows), along with tufting of the terminal phalanges. The serum insulin-like growth factor 1 concentration was 1,380 mg/ml (normal 87–243). Magnetic resonance imaging of the pituitary gland (T1-weighted image with contrast) showed a poorly enhanced tumor of 9 mm in the sella turcica. Acromegaly was diagnosed and the brain tumor was resected. Acromegaly is characterized by acral enlargement, with initial presentation sometimes being hypertrophic arthropathy. Radiographs showing widening of joint space due to cartilage enlargement can be a clue to the diagnosis.

Masei Suda, MD
 Yasuhiro Suyama, MD
 Masato Okada, MD
 St. Luke's International University
 and St. Luke's International Hospital
 Tokyo, Japan