


RESEARCH

Open Access



# Bedside selection of positive end-expiratory pressure by electrical impedance tomography in hypoxemic patients: a feasibility study

Nilde Eronia<sup>1</sup>, Tommaso Mauri<sup>2,3</sup>, Elisabetta Maffezzini<sup>4</sup>, Stefano Gatti<sup>4</sup>, Alfio Bronco<sup>4</sup>, Laura Alban<sup>2,3</sup>, Filippo Binda<sup>3</sup>, Tommaso Sasso<sup>2,3</sup>, Cristina Marenghi<sup>3</sup>, Giacomo Grasselli<sup>3</sup>, Giuseppe Foti<sup>1,4</sup>, Antonio Pesenti<sup>2,3</sup> and Giacomo Bellani<sup>1,4\*</sup> 

## Abstract

**Background:** Positive end-expiratory pressure (PEEP) is a key element of mechanical ventilation. It should optimize recruitment, without causing excessive overdistension, but controversy exists on the best method to set it. The purpose of the study was to test the feasibility of setting PEEP with electrical impedance tomography in order to prevent lung de-recruitment following a recruitment maneuver. We enrolled 16 patients undergoing mechanical ventilation with  $\text{PaO}_2/\text{FiO}_2 < 300$  mmHg. In all patients, under constant tidal volume (6–8 ml/kg) PEEP was set based on the PEEP/ $\text{FiO}_2$  table proposed by the ARDS network (PEEP<sub>ARDSnet</sub>). We performed a recruitment maneuver and monitored the end-expiratory lung impedance (EELI) over 10 min. If the EELI signal decreased during this period, the recruitment maneuver was repeated and PEEP increased by 2 cmH<sub>2</sub>O. This procedure was repeated until the EELI maintained a stability over time (PEEP<sub>EIT</sub>).

**Results:** The procedure was feasible in 87% patients. PEEP<sub>EIT</sub> was higher than PEEP<sub>ARDSnet</sub> ( $13 \pm 3$  vs.  $9 \pm 2$  cmH<sub>2</sub>O,  $p < 0.001$ ).  $\text{PaO}_2/\text{FiO}_2$  improved during PEEP<sub>EIT</sub> and driving pressure decreased. Recruited volume correlated with the decrease in driving pressure but not with oxygenation improvement. Finally, regional alveolar hyperdistension and collapse was reduced in dependent lung layers and increased in non-dependent lung layers.

**Conclusions:** In hypoxemic patients, a PEEP selection strategy aimed at stabilizing alveolar recruitment guided by EIT at the bedside was feasible and safe. This strategy led, in comparison with the ARDSnet table, to higher PEEP, improved oxygenation and reduced driving pressure, allowing to estimate the relative weight of overdistension and recruitment.

**Keywords:** EIT, PEEP, Overdistension, Recruitment

## Background

Acute respiratory distress syndrome (ARDS) is a relatively common and severe form of respiratory failure, characterized by massive non-cardiogenic pulmonary edema, with consequent loss of aeration in the

alveolar spaces [1]. ARDS patients require intubation and mechanical ventilation as lifesaving procedures, and positive end-expiratory pressure (PEEP) is a key element of mechanical ventilation settings. Since both lower and higher PEEP levels may be associated with significant adverse consequences [2], personalized PEEP setting might be of cornerstone importance. Ideally, PEEP should optimize recruitment to improve oxygenation and reduce lung strain, without causing excessive overdistension, but

\*Correspondence: giacomo.bellani1@unimib.it

<sup>4</sup> Department of Medicine, School of Medicine and Surgery, University of Milan-Bicocca, Via Cadore 48, Monza, Italy

Full list of author information is available at the end of the article

controversy exists on the best bedside method to select PEEP. A common clinical approach is based on the severity of hypoxemia, relying on the use of  $\text{PaO}_2/\text{FiO}_2$  tables [3]. Other approaches to select “personalized PEEP” are based on its effect on respiratory mechanics, focusing on plateau pressure [4], on stress index [5] or on transpulmonary pressure [6, 7]. These methods, however, do not provide consistent finding [8] and share the limitation of “lumping” into one measurement heterogeneous processes within the lung (i.e., recruitment, tidal opening–closing and overdistension [9, 10]) and of using surrogate rather than direct measures for lung recruitment induced by PEEP. In summary, bedside personalization of PEEP is still quite far from clinical practice. Randomized clinical trials have not shown clear benefit by indiscriminate application of high PEEP levels: Although a meta-analysis suggested that “higher” PEEP might be beneficial in moderate–severe ARDS [11], in everyday clinical practice clinicians still tend to apply relatively low PEEP levels even in severe ARDS patients [12].

In the present study, we hypothesized that the optimal PEEP level for each patient may be selected by assessing its efficacy in maintaining alveolar recruitment induced by a recruitment maneuver (RM). RMs are transient and voluntary increases in transpulmonary pressure that could reopen previously collapsed alveoli; they typically consist of application of continuous positive airway pressure of 30–50  $\text{cmH}_2\text{O}$  for 20–40 s, or transient increases in PEEP and/or inspiratory pressure, with a consequent increase in end-expiratory lung volume (EELV), decrease in lung strain and improvement in patient’s oxygenation [13, 14].

However, if RM is not followed by the application of adequate PEEP, EELV will progressively decrease over time (alveolar de-recruitment). At the opposite, RM plus adequate PEEP level will minimize de-recruitment and maintain sustained recruitment.

Electrical impedance tomography (EIT) is a noninvasive, radiation-free, bedside lung monitoring technique [15], that tracks real-time changes in regional lung ventilation and end-expiratory lung impedance (EELI), which closely correlate with EELV changes [16]. While several studies demonstrated the ability of EIT in assessing alveolar recruitment [17, 18], only a few used this method to guide therapy in humans [19]. The aim of the present study was to assess the feasibility of personalized PEEP selection based on its efficacy in stabilizing the EELV increase induced by a RM, using EIT as tool to monitor EELV changes. Moreover, we compared the effects of the selected PEEP on gas exchange, respiratory mechanics, hemodynamics and tidal recruitment/de-recruitment and overdistension with those induced by the application of PEEP levels selected according to  $\text{PEEP}/\text{FiO}_2$  tables.

This comparator was chosen because of its large acceptance in the clinical practice and the frequent use of this approach as a control in other studies aimed at testing physiological-based methods to titrate PEEP [4, 6].

## Methods

The study was conducted in the general intensive care units of the university-affiliated hospitals San Gerardo, Monza and Fondazione IRCCS Ca’ Granda Ospedale Maggiore Policlinico, Milan, both in Italy. Institutional ethical committees of each institution approved the study, and informed consent was obtained according to local recommendations. Inclusion criteria were as follows: patient with acute hypoxemic respiratory failure ( $\text{PaO}_2/\text{FiO}_2$  ratio  $\leq 300$  mmHg) of non-cardiogenic origin undergoing controlled mechanical ventilation with  $\text{PEEP} \geq 5$   $\text{cmH}_2\text{O}$ . Exclusion criteria were as follows: age  $< 18$  years, pregnancy, hemodynamic instability (requiring vasoactive drugs), presence of pneumothorax or lung emphysema, previous history of severe chronic obstructive pulmonary disease (GOLD III or IV), contraindications to the use of EIT (e.g., presence of pacemaker or automatic implantable cardioverter–defibrillator) and impossibility to place the EIT belt in the right position (e.g., presence of surgical wounds dressing). At enrollment, the following variables were collected: sex, age, predicted body weight (PBW), body mass index, Simplified Acute Physiology Score II (SAPS II) value at ICU admission, etiology of acute respiratory failure, diagnosis of ARDS and duration of intubation before enrollment. Vital status was recorded for all patients at ICU discharge.

## EIT monitoring

An EIT-dedicated belt equipped with 16 electrodes was placed around each patient’s chest at the fifth or sixth intercostal space and connected to a commercial EIT monitor (PulmoVista® 500, Dräger Medical GmbH, Lübeck, Germany). EIT data were generated by application of small alternate electrical currents rotating around patient’s thorax, registered at 20 Hz and stored for offline analysis. When patients were ventilated with a ventilator able to communicate by serial protocol with the EIT device, airway pressure, flow and volume tracings were continuously recorded by EIT machine.

## Study protocol

Patients were deeply sedated (Richmond sedation scale  $-4$  or  $-5$ ) and paralyzed and mechanical ventilation was set in volume controlled according to the ARDSnet guidelines, as follows:  $V_t = 6\text{--}8$  mL/kg of PBW; plateau pressure lower than 30  $\text{cmH}_2\text{O}$ ; respiratory rate was targeted to a pH value of 7.30–7.45; PEEP and  $\text{FiO}_2$  were set

according to the lower PEEP/higher  $\text{FiO}_2$  table [3], targeting a partial arterial oxygen tension = 55–80 mmHg or  $\text{SpO}_2 = 88\text{--}95\%$ .

Then, study protocol, shown in Fig. 1A, consisted of three consecutive steps:

1. Baseline phase (20 min): volume-controlled ventilation set as previously described ( $\text{PEEP}_{\text{ARDSnet}}$ )
2.  $\text{PEEP}_{\text{EIT}}$  selection phase, which included:
  - 2.1. Application of a RM, with a positive pressure of 40  $\text{cmH}_2\text{O}$  for 40 s.
  - 2.2. Measure of EELI variation ( $\Delta\text{EELI}$ ) 30 s ( $\Delta\text{EELI}_{\text{start}}$ ) and 10 min ( $\Delta\text{EELI}_{\text{end}}$ ) after the RM.
  - 2.3. Calculation of  $\Delta\text{EELI}$  change: If  $\Delta\text{EELI}_{\text{end}}$  decreased more than 10% of  $\Delta\text{EELI}_{\text{start}}$  (Fig. 1B-a), a new RM was performed, and PEEP increased by 2  $\text{cmH}_2\text{O}$
  - 2.4. If  $\Delta\text{EELI}$  decreased less than 10% of  $\Delta\text{EELI}_{\text{start}}$  (Fig. 1B-b), PEEP was left unchanged. If, after the first RM,  $\Delta\text{EELI}$  increased less than 10% of  $\Delta\text{EELI}_{\text{start}}$ , PEEP was reduced by 2  $\text{cmH}_2\text{O}$ , every 10 min, until a decrease in  $\Delta\text{EELI}$  of 10% or more was observed.
  - 2.5. The first three points of STEP 2 were repeated until  $\Delta\text{EELI}$  change fulfilled point 2.4 requirement, up to a maximum PEEP level of 18  $\text{cmH}_2\text{O}$ . ( $\text{PEEP}_{\text{EIT}}$ ).
3.  $\text{PEEP}_{\text{EIT}+2}$  phase, lasting 10 min: A new RM was performed and PEEP increased by 2  $\text{cmH}_2\text{O}$  from  $\text{PEEP}_{\text{EIT}}$  (Fig. 1A).

The reliability of bedside-derived calculation of relative changes in  $\Delta\text{EELI}_{\text{start}}$  and  $\Delta\text{EELI}_{\text{end}}$  was also verified offline (Additional file 1: Figure E2).

At the end of each phase (i.e.,  $\text{PEEP}_{\text{ARDSnet}}$ ,  $\text{PEEP}_{\text{EIT}}$ ,  $\text{PEEP}_{\text{EIT}+2}$ ), arterial blood gases were collected, mean arterial pressure, central venous pressure and heart rate were recorded and end-inspiratory and end-expiratory occlusions performed, lasting about 3 s. Then, from offline analysis of ventilation tracings, plateau pressure and total PEEP (including intrinsic PEEP) were measured. Driving pressure was calculated as plateau pressure – total PEEP and respiratory system compliance as  $\text{Vt}/\text{driving pressure}$ .

Tidal volume was held constant during the protocol. PEEP was increased up to a maximum level of 18  $\text{cmH}_2\text{O}$ ; the protocol foresaw a decrease in  $\text{Vt}$  if a plateau pressure higher than 30 was reached. This was, however, never the case in our patients. Clinically set  $\text{FiO}_2$  was left unchanged throughout the study. However, from the value of  $\text{PaO}_2$  measured at  $\text{PEEP}_{\text{EIT}}$ , we calculated

the “predicted  $\text{FiO}_2$ ” value at which the  $\text{PaO}_2$  in  $\text{PEEP}_{\text{EIT}}$  step would have been equal to ARDSnet step: “predicted  $\text{FiO}_2$ ” =  $[\text{PaO}_2/\text{FiO}_2_{\text{ARDSnet}}/\text{PaO}_2/\text{FiO}_2_{\text{EIT}} \times \text{FiO}_2_{\text{ARDSnet}}]$ . Since  $\text{PaO}_2$  is not linearly related to  $\text{FiO}_2$ , this calculation, not previously validated, should be interpreted with caution [20].

We also calculated the PEEP level that would have resulted from the Express protocol [4] as 30  $\text{cmH}_2\text{O}$  minus driving pressure (at  $\text{PEEP}_{\text{EIT}}$ ).

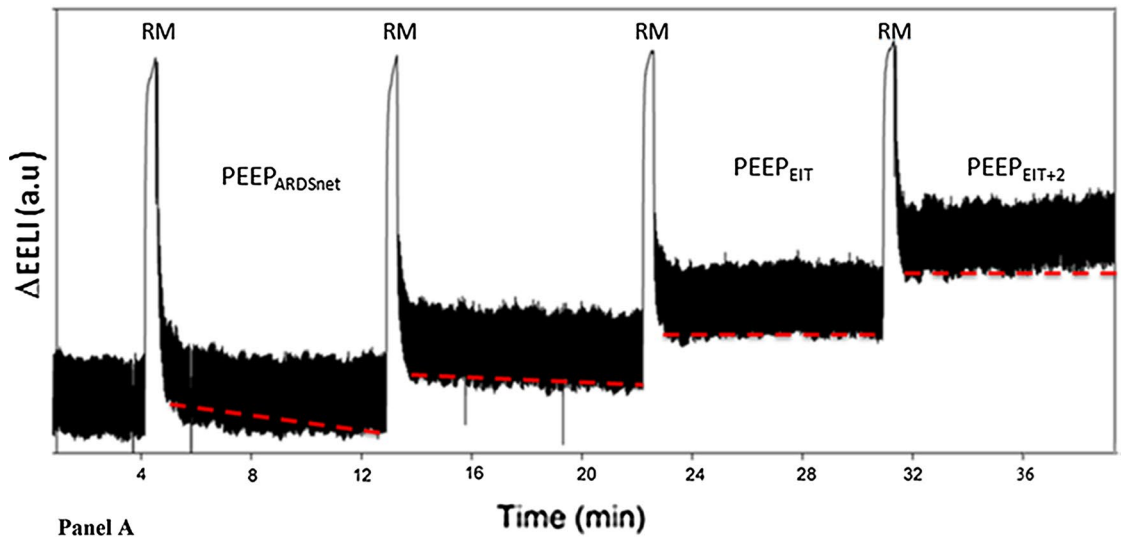
#### EIT data

Besides the previously described bedside evaluation of EIT tracings used to titrate PEEP, EIT data were also analyzed offline to derive further parameters. The whole PEEP titration protocol was acquired as sequential EIT files lasting 5 min with the same baseline reference. EIT data analyses were performed after identification of a sequence of breaths deemed as representative (i.e., stable  $\text{Vt}$  and EELI) at the end of each phase. We defined four horizontal same-size contiguous layers [ventral (V), middle-ventral (MV), middle-dorsal (MD), dorsal (D)], encompassing the entire field of view (Additional file 1: Figure E1), and from offline analyses (performed by EIT Data Analysis Tool 6.0, Dräger Medical GmbH, Lübeck, Germany) of average raw EIT data of the selected breaths, the following variables were obtained for each study phase:

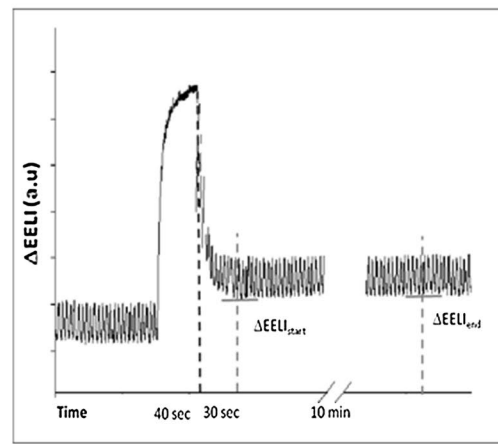
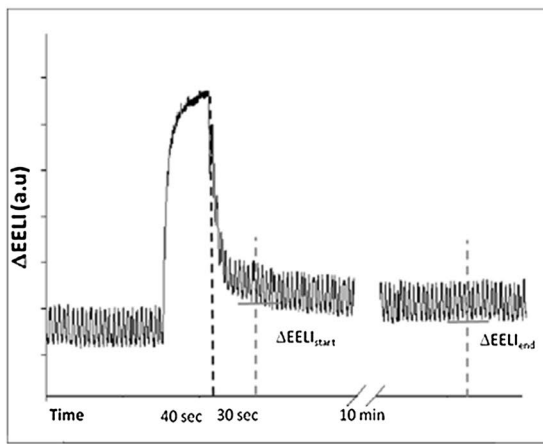
- Regional compliance: We obtained regional distribution of  $\text{Vt}$  during inspiratory occlusion ( $\text{Vt}_{\%}$ ) expressed as percentage of its global value, and then we calculated regional compliance as  $\text{Vt}_{\%}/100 \times \text{compliance}$ .
- Alveolar hyperdistension and collapse: As  $\text{Vt}$  correlates well with local impedance lung changes [21–24], pixel-by-pixel compliance was calculated as  $\Delta\text{impedance}/(\text{plateau pressure} - \text{PEEP})$ . Alveolar overdistension and collapse was then computed as previously described by Costa et al. [25]. Finally, alveolar hyperdistension and collapse was calculated as the sum of alveolar hyperdistension and collapse expressed as percentage value.
- The amount of recruited volume was calculated as the difference between actual EELV change (measured by EIT) minus the product of compliance at lower PEEP and the PEEP change, as previously described: Recruited volume =  $\Delta\text{EELV} - [\text{compliance}_{\text{ARDSnet}} \times (\text{PEEP}_{\text{EIT}} - \text{PEEP}_{\text{ARDSnet}})]$  [16].

#### Statistical analysis

In the study population, we expected a  $\text{PaO}_2/\text{FiO}_2$  ratio =  $199 \pm 57$  [16]. In order to detect an increase in  $\text{PaO}_2/\text{FiO}_2$  ratio of 25%, in a crossover design, we

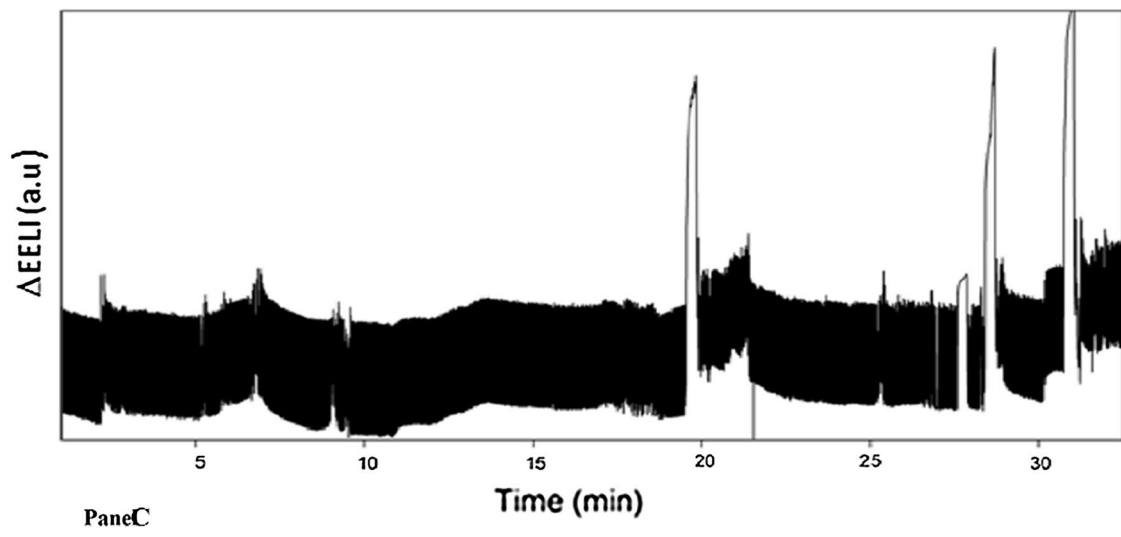


Panel A



a  
Panel B

b



Panel C

(See figure on previous page.)

**Fig. 1** PEEP selection by EIT (*Panel A and B*): After a baseline phase lasting 20 min (PEEP<sub>ARDSnet</sub>), a RM was performed (whose duration is shortened in the image for clarity purposes); end-expiratory lung impedance variation ( $\Delta$ EELI) was measured after 30 s ( $\Delta$ EELI<sub>start</sub>) and after 10 min ( $\Delta$ EELI<sub>end</sub>); if  $\Delta$ EELI<sub>end</sub> decreased more than 10% of  $\Delta$ EELI<sub>start</sub>, a new RM was performed, and PEEP increased by 2 cmH<sub>2</sub>O. This was repeated until  $\Delta$ EELI<sub>end</sub> decreased less than 10% of  $\Delta$ EELI<sub>start</sub>, or up to maximum PEEP level of 18 cmH<sub>2</sub>O (PEEP<sub>EIT</sub>). A new RM was performed and PEEP increased by 2 cmH<sub>2</sub>O from PEEP<sub>EIT</sub> (PEEP<sub>EIT+2</sub>). Unstable EELI track (*Panel C*): an example of unstable EELI track

estimated that 12 patients would be necessary. Since the feasibility of the technique was unknown, we increased this by 30%, obtaining a final sample size of 16 patients. Differences between variables obtained during each study phase were tested by one-way analysis of variance (ANOVA) for repeated measures, or by one-way repeated measures ANOVA on ranks for non-normally distributed variables; post hoc comparisons were made by the Bonferroni's method. Comparisons between two groups of normally distributed variables were made by independent samples *t* test, while non-normally distributed variables were compared by Mann–Whitney *U* test. A level of *p* < 0.05 (two-tailed) was considered as statistically significant. Normally distributed data are indicated as mean  $\pm$  standard deviation, while median and interquartile range [IQR] are used to report non-normally distributed variables. Statistical analyses were performed by SigmaPlot 11.0 (Systat Software Inc., San Jose, CA).

**Results**

**Patients' characteristics**

Patients' main characteristics are summarized in Table 1. Patients were 66  $\pm$  11 years old and 14 (87%) were men.

On the day of the study, 12 patients (75%) fulfilled ARDS criteria. Fourteen patients (87%) were enrolled within a week from intubation. The diagnosis at ICU admission was pneumonia in ten patients (62%), thoracic trauma in three patients (19%) and septic shock in three patients (19%). Three patients (19%) died during their hospital stay.

**Feasibility of setting PEEP by EIT-based evidence of sustained recruitment**

We enrolled 16 patients: Clinical PEEP level at study enrollment was 11  $\pm$  3 cmH<sub>2</sub>O; EELI tracing could successfully detect the PEEP level associated with sustained recruitment in 14 (87%) patients; of these 14 patients, 11 (78%) fulfilled ARDS; the distribution of tidal volume during PEEP<sub>ARDSnet</sub> phase was 52  $\pm$  11% in right lung and 48  $\pm$  10% in left lung (*p* = 0.557).

In two patients (13%), EIT tracings could not be used due to the lack of stability of the EELI signal (Fig. 1C), and thus, their data were excluded from further analysis.

PEEP<sub>EIT</sub> was significantly higher than PEEP<sub>ARDSnet</sub> (13  $\pm$  3 vs. 9  $\pm$  2 cmH<sub>2</sub>O, *p* < 0.001), and the correlation between them was significant, but loose (*R*<sup>2</sup> = 0.36,

**Table 1 Patients' main characteristics**

Patient #	Age (years)	Sex	Body mass index (Kg/m <sup>2</sup> )	SAPS II score	PaO <sub>2</sub> /FiO <sub>2</sub> (mmHg)	Diagnosis at admission	ARDS	Days of intubation before enrollment	ICU outcome
1	59	M	26	39	121	Thoracic trauma	Y	1	Survive
2	67	M	29	33	114	Pneumonia	Y	3	Survive
3	67	M	24	34	236	Pneumonia	Y	4	Survive
4	55	M	26	46	170	Pneumonia	Y	15	Survive
5	75	F	31	47	84	Pneumonia	Y	2	Survive
6	80	F	28	78	145	Pneumonia	Y	1	Dead
7	63	M	29	45	140	Pneumonia	N	2	Survive
8	41	M	34	33	209	Pneumonia	Y	3	Survive
9	79	M	24	44	97	Pneumonia	Y	1	Survive
10	69	M	25	35	279	Thoracic trauma	Y	3	Survive
11	64	M	26	48	238	Thoracic trauma	N	3	Dead
12	63	M	28	42	104	Pneumonia	Y	3	Dead
13	56	M	37	39	86	Pneumonia	Y	2	Survive
14	88	M	26	38	210	Septic shock	Y	1	Survive
15	68	M	26	51	196	Septic shock	N	19	Survive
16	59	M	29	31	132	Septic shock	N	6	Survive
Mean $\pm$ SD	66 $\pm$ 11	2 F	28 $\pm$ 4	43 $\pm$ 11	160 $\pm$ 60	10 pneumonia, 3 thoracic trauma, 3 septic shock	12 Y	4 $\pm$ 5	3 dead

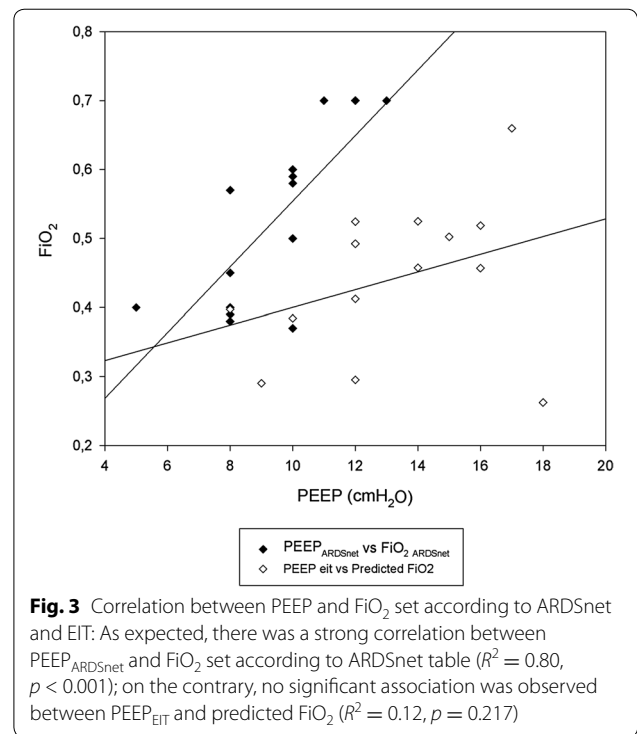
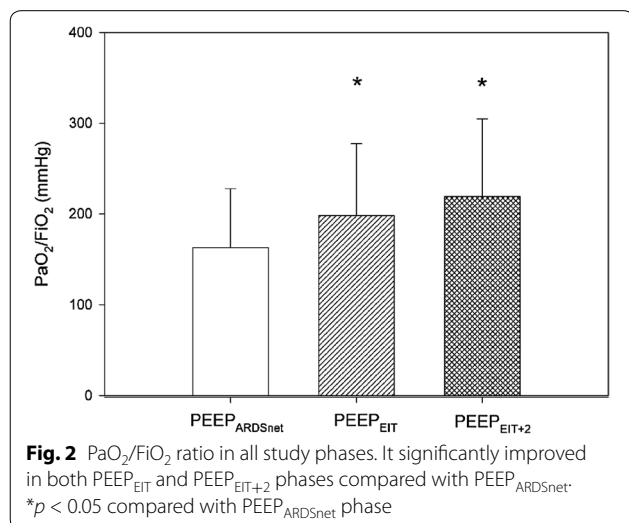
SAPS, Simplified Acute Physiologic Score; ARDS, acute respiratory distress syndrome; ICU, intensive care unit

$p = 0.022$ ). The mean number of stepwise changes in PEEP performed between  $PEEP_{ARDSnet}$  and  $PEEP_{EIT}$  phases was  $2 \pm 1$ , and the total duration of time required to arrive at the  $PEEP_{EIT}$  was  $48 \pm 12$  min. The largest PEEP variations performed were 6 cmH<sub>2</sub>O in two patients and 10 cmH<sub>2</sub>O in one patient.

**Effects of PEEP selection on oxygenation, respiratory mechanics and hemodynamics**

Ventilation tracings were continuously recorded by EIT in 9/14 patients;  $FiO_2$  during all study phases was kept stable at  $0.5 \pm 0.1$ ;  $PaO_2/FiO_2$  ratio improved during both  $PEEP_{EIT}$  and  $PEEP_{EIT+2}$  phases compared with  $PEEP_{ARDSnet}$  (Fig. 2), but no significant changes occurred between  $PEEP_{EIT}$  and  $PEEP_{EIT+2}$  phases ( $p = 0.121$ ). The predicted  $FiO_2$  at  $PEEP_{EIT}$  would have been significantly lower compared with the ARDSnet table ( $0.44 \pm 0.1$  vs.  $0.53 \pm 0.1$ ,  $p \leq 0.001$ ). Moreover, while (as expected) there was a strong correlation between  $PEEP_{ARDSnet}$  and  $FiO_2$  ARDSnet, no significant association was observed between  $PEEP_{EIT}$  and predicted  $FiO_2$  (Fig. 3). At  $PEEP_{EIT}$  levels, compliance did not significantly change ( $p = 0.097$ ), whereas the driving pressure was significantly reduced in  $PEEP_{EIT}$  phase compared with ARDSnet phase (Table 2), albeit with a probably modest clinical relevance (range between  $-2$  and  $0$  cmH<sub>2</sub>O). The PEEP level theoretically achieved with Express trial approach was significantly higher than  $PEEP_{EIT}$  ( $20.6 \pm 1.9$  vs.  $13.1 \pm 2.9$  cmH<sub>2</sub>O,  $p < 0.001$ ), without any significant association ( $R_2 = 0.002$ ).

No significant hemodynamic changes were observed during all study phases (Table 3);  $PaCO_2$  remained stable over all study phases ( $45 \pm 7$ , vs.  $46 \pm 9$ , vs.  $47 \pm 9$  mmHg,  $p = 0.1$ ).



**Homogeneity and regional mechanics**

Regional compliance was reduced in ventral lung layer, and it improved in middle-dorsal lung layers, during both  $PEEP_{EIT}$  and  $PEEP_{EIT+2}$  phases compared with  $PEEP_{ARDSnet}$ . In dorsal layer, compliance improved in  $PEEP_{EIT+2}$  phase, while no significant changes in middle-ventral layer were observed (Table 2). Interestingly, regional alveolar hyperdistension and collapse was significantly reduced in dependent lung layers and significantly increased in non-dependent lung layers during both  $PEEP_{EIT}$  and  $PEEP_{EIT+2}$  compared with  $PEEP_{ARDSnet}$ .

**Table 2 Global and regional respiratory system compliance in all study phases**

	$PEEP_{ARDSnet}$	$PEEP_{EIT}$	$PEEP_{EIT+2}$	$p$ value
Driving pressure (cmH <sub>2</sub> O)	$10.2 \pm 1.9$	$9.3 \pm 1.9^*$	$9.7 \pm 2.5$	0.035
Compliance (ml/cmH <sub>2</sub> O)	$44.6 \pm 11$	$49.5 \pm 12$	$49.5 \pm 17$	0.097
Compliance <sub>v</sub> (ml/cmH <sub>2</sub> O)	$6.9 \pm 3$	$5.0 \pm 2^*$	$4.1 \pm 2^*$	<0.01
Compliance <sub>MV</sub> (ml/cmH <sub>2</sub> O)	$24.3 \pm 9$	$24.9 \pm 10$	$23.8 \pm 12$	0.873
Compliance <sub>MD</sub> (ml/cmH <sub>2</sub> O)	$6.9 \pm 6$	$14.6 \pm 6^*$	$16.1 \pm 7^*$	<0.001
Compliance <sub>D</sub> (ml/cmH <sub>2</sub> O)	$3.2 \pm 2$	$4.8 \pm 5$	$5.1 \pm 5^*$	<0.05

V, ventral; MV, middle-ventral; MD, middle-dorsal; D, dorsal

\*  $p < 0.05$  compared with  $PEEP_{ARDSnet}$  phase

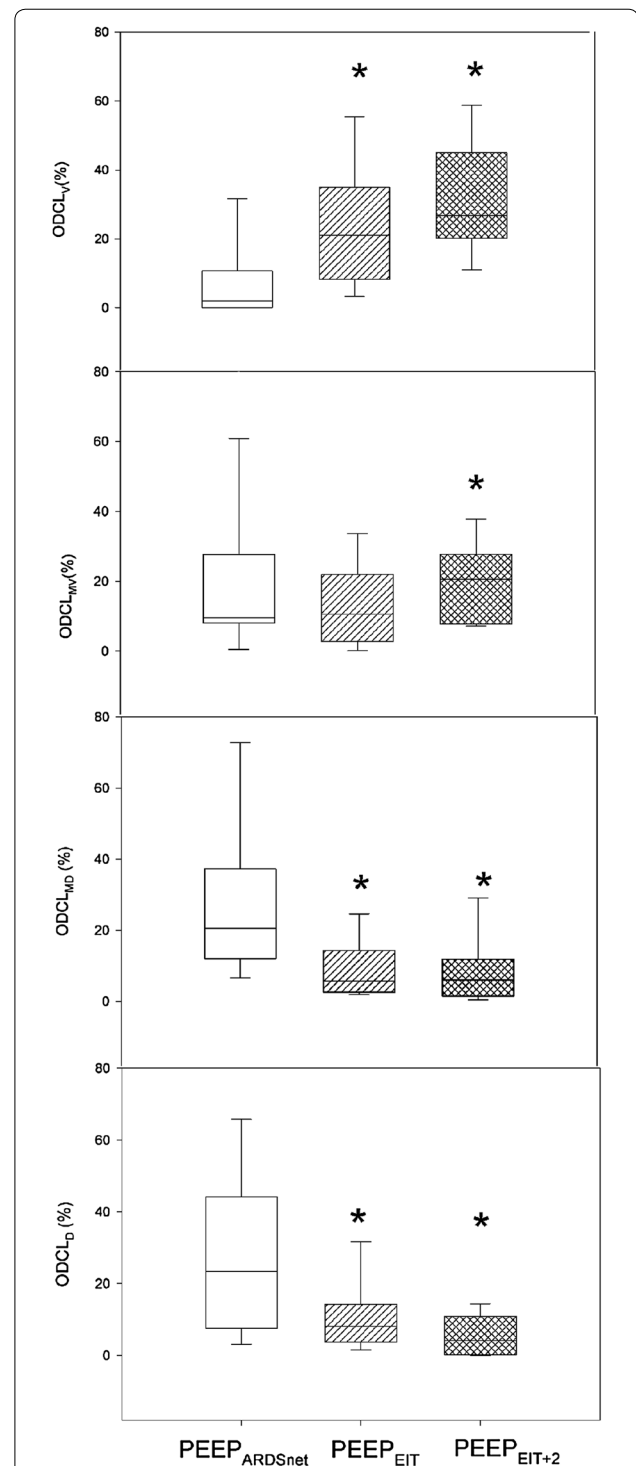
**Table 3 Hemodynamics during all study phases**

	PEEP <sub>ARDSnet</sub>	PEEP <sub>EIT</sub>	PEEP <sub>EIT+2</sub>	<i>p</i> value
Mean arterial pressure (mmHg)	77 ± 10	73 ± 7	75 ± 11	0.079
Heart rate (bpm)	86 ± 16	83 ± 18	87 ± 18	0.066
Central venous pressure (mmHg)	12 ± 5	13 ± 6	13 ± 6	0.214

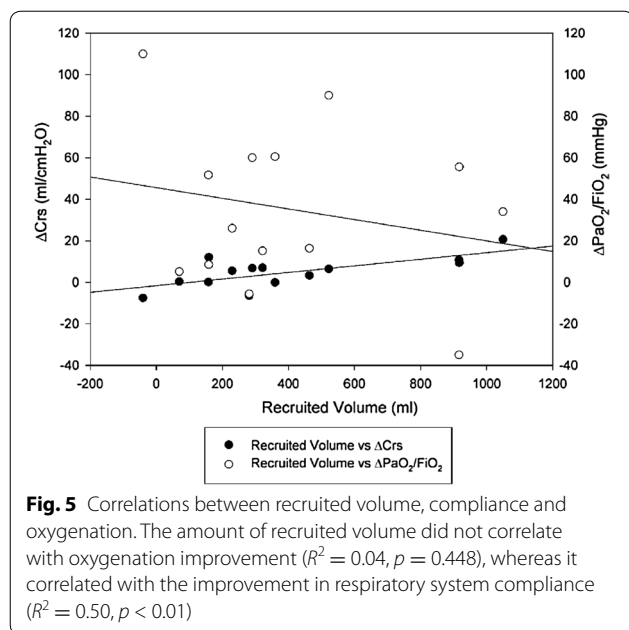
Furthermore, in middle-ventral lung layers alveolar hyperdistension and collapse was significantly higher in PEEP<sub>EIT+2</sub> phase than in PEEP<sub>ARDSnet</sub>, but did not change in PEEP<sub>EIT</sub> step (Fig. 4). The recruited volume at PEEP<sub>EIT</sub> was 306 (159–522) ml. The amount of recruited volume did not correlate with oxygenation improvement (Fig. 5), whereas it correlated with changes in respiratory system compliance ( $R^2 = 0.50$ ,  $p < 0.01$ , Fig. 5) and with the decrease in driving pressure ( $R^2 = 0.36$ ,  $p < 0.05$ ). No significant correlation was observed between oxygenation improvement and driving pressure reduction ( $R = 0.26$ ,  $p = 0.36$ ).

## Discussion

The main findings of this study can be summarized as follows: Bedside PEEP setting based on sustained recruitment following a RM as visualized by EIT was feasible in the majority of patients with acute hypoxemic respiratory failure (most of whom fulfilled ARDS criteria). This method invariably led to the application of higher PEEP levels in comparison with the commonly used ARDSnet table and was associated with improved oxygenation. Furthermore, EIT allowed to disclose and quantitate the presence of regional overdistension associated with PEEP increase. PEEP setting in hypoxemic respiratory failure and ARDS remains controversial. A meta-analysis on three large randomized trials [3] showed that higher PEEP could be beneficial in more severe ARDS patients, but no indication was provided on how to titrate this higher PEEP: Indeed, while in two studies an oxygenation-based criterion was used, in the third trial a respiratory mechanics-based method was used. Later, a secondary analysis by Goligher et al. [26] showed that the benefit of higher PEEP on mortality was limited to the patients who had an oxygenation improvement, likely indicating the presence of recruitment. Even if the aforementioned paper does not necessarily prove a cause relationship effect (i.e., that higher PEEP prevented death in recruiters), we reasoned that it would have been desirable to have a method to set PEEP directly targeting alveolar recruitment combined with prevention of de-recruitment, and we focused on EIT as a bedside non-invasive tool. While the ability of EIT in assessing lung recruitment has been previously shown, most studies



**Fig. 4** Regional alveolar hyperdistension and collapse distribution in all study phases. Alveolar hyperdistension and collapse was significantly reduced in dependent lung layers and significantly increased in non-dependent lung layers compared with PEEP<sub>ARDSnet</sub> in both PEEP<sub>EIT</sub> and PEEP<sub>EIT+2</sub> phases. Furthermore, in middle-ventral lung layers alveolar hyperdistension and collapse was significantly higher in PEEP<sub>EIT+2</sub> phase compared with PEEP<sub>ARDSnet</sub>, but did not change in PEEP<sub>EIT</sub> step. \* $p < 0.05$  compared with PEEP<sub>ARDSnet</sub> phase



were conducted on animal models and/or explored the effects of relatively high PEEP changes (in the order of 10 cmH<sub>2</sub>O) [27, 28]. On the contrary, we aimed to test the feasibility of a specific protocol, with a “fine tuning” of PEEP in steps of 2 cmH<sub>2</sub>O. Since we expected that in most patients the EIT-based approach would have led to increase in PEEP from the NIH table, we added PEEP<sub>EIT+2</sub> phase, in order to establish the effects on oxygenation and respiratory mechanics of a further increase in PEEP above the level set by EIT. The method proposed appeared feasible in most patients: This is encouraging in prospect of future evaluation of the protocol in a clinical setting. A PEEP increase will always be associated with an increment of EELV, even if no recruitment occurs, simply because of the expansion of ventilated alveoli. Hence, to dissect these two phenomena, we took advantage of RM. Although available literature shows that RM does not impact outcome, it also shows that it is safe and devoid of major complications [29]. Grasso et al. [30] showed how RMs are unlikely to benefit patients with more than 5 days of ARDS; plus, Borges et al. [31, 32] obtained best results in terms of recruitability with RMs involving step-wise increases in PEEP compared with sustained inflation methods; however, we included in the algorithm RMs more as “diagnostic” tools to exploit potential for lung recruitment, rather than therapeutic measures; for this reason, we did not focus on a specific category of patients and we chose the most simple and immediate method of recruitment, usually used in our clinical practice.

As a reference method, we used the ARDSnet table, one of the most frequently applied methods. Not surprisingly,

EIT led to an increase in PEEP in all subjects: This finding is not surprising, since the ARDSnet table has been used to set PEEP in the control group of all studies testing “higher” PEEP strategies.

In the majority of patients, we found that the protocol was feasible: It led to the univocal identification of a PEEP level associated with sustained recruitment after a RM, without exceeding the upper safety limit set to 18 cmH<sub>2</sub>O. In the majority of patients, the PEEP changes were within a relatively narrow range (mean 4 cmH<sub>2</sub>O) and hence safe to apply. Despite relatively small, however, these changes were clinically relevant, leading to improvement in oxygenation. It was likely due to lung recruitment and increased lung size (as indicated also by the positive correlation between these two variables), and this might possibly lead to a decreased injury from mechanical ventilation. Interestingly, these improvements were not due to the increase in PEEP per se, since a further increase in PEEP above PEEP<sub>EIT</sub> was not associated with further improvement in gas exchange and respiratory mechanics.

The global change in compliance between PEEP<sub>ARDSnet</sub> and PEEP<sub>EIT</sub> phases was the net result of two opposed changes in regional compliance: increasing in the dorsal layers (likely due to recruitment) and decreasing in the ventral layers (likely due to overdistension). We cannot exclude that part of the improvement in the compliance of dorsal layers might be due to the presence of intratidal recruitment; however, this effect was unlikely since previous studies showed that increasing PEEP leads to a decrease in intratidal recruitment [2]. FiO<sub>2</sub> was kept stable in all study phases ( $0.5 \pm 0.1$ ); in this way, we avoided erroneous estimation of alveolar collapse and recruitment due to low alveolar oxygen concentration [31, 33]. We believe that this result further underlines the need for a regional real-time monitoring of the distribution of ventilation, which could prompt a decrease in tidal volume until overdistension of ventral regions drops back to baseline.

This study has some limitations that need to be acknowledged. EIT measurement encompasses only a cross-sectional slice of 5–10 cm of the thorax, and we assumed that other lung regions behave similarly. However, previous studies on similar patient populations showed that  $\Delta$ EELV measured by EIT well represents the entire lung [34]. The study population was relatively small, but large enough to test the feasibility, safety and efficacy on selected physiological endpoints. Our results do not provide any evidence that a strategy aimed at obtaining stable recruitment leads to a decreased lung injury, but show that such aim can be achieved and that the overdistension also induced by PEEP can be simultaneously monitored and could be used to further adjust



ventilation (e.g., reducing tidal volume). Therefore, these results pave the way to a larger study, aimed at assessing whether this approach to PEEP setting leads to benefit in outcome.

Finally, we have not limited our population to ARDS patients: This choice was on one the hand pragmatic, facilitating the enrollment of patients, but on the other hand it also acknowledges the fact that alveolar de-recruitment is not unique of ARDS and that mechanical ventilation can be a challenge also in acutely hypoxemic patients. As this study aimed to test the feasibility of the method, we exclude that the inclusion of non-ARDS patient introduced a significant bias, while we are uncertain of what would be the best approach in an outcome study.

## Conclusions

This study shows that, in a cohort of patients with acute hypoxemic respiratory failure undergoing lung protective ventilation, a PEEP selection strategy aimed at maximizing alveolar recruitment and preventing de-recruitment, guided by EIT at the bedside, is feasible, simple and safe, leading to systematically higher PEEP values than the ARDSnet table, with positive effects on gas exchange and respiratory system mechanical properties. This strategy also allows estimating the relative weight of overdistension and recruitment following a PEEP change. These results do not necessarily imply that benefits of recruitment achieved out weight the negative effects induced by overdistension and larger study are required to elucidate if this strategy could also lead to improved clinical outcome.

## Additional file

**Additional file 1: Figure E1.** Definition of the layers. We defined four horizontal same-size contiguous layers [ventral (V), middle-ventral (MV), middle-dorsal (MD), dorsal (D)], encompassing the entire field of view.

**Figure E2.** Average drop of EELI, obtained from offline tracing analysis, occurring between 30 s after the recruitment manoeuvre (DEELI start) to ten minutes after, for the ARDSnet step, for the first step of PEEP titration (Step #1) and for PEEP<sub>EIT</sub>. Dashed line indicates the 10% drop which we used as a cutoff to set PEEP based on EIT

## Abbreviations

ARDS: acute respiratory distress syndrome; EELI: end-expiratory lung impedance; EELV: end-expiratory lung volume; EIT: electrical impedance tomography; ICU: intensive care unit; PBW: predicted body weight; PEEP: positive end-expiratory pressure; RM: recruitment maneuver; SAPS II: Simplified Acute Physiology Score II.

## Authors' contributions

NE, GB and AP planned the study design, TM and GF were the principal investigators; EM, SG, AB and TS acquired data, LA, FB and CM undertook the statistical analysis; NE, GG and GB wrote the manuscript. All authors made substantial contributions to conception and design, or acquisition of data, or analysis and interpretation of data, have been involved in drafting the manuscript and revising it critically for important intellectual content and

have given final approval of the version to be published. Each author has participated sufficiently in the work to take public responsibility for appropriate portions of the content and agreed to be accountable for all aspects of the work in ensuring that questions related to the accuracy or integrity of any part of the work are appropriately investigated and resolved. All authors read and approved the final manuscript

## Author details

<sup>1</sup> Department of Emergency and Intensive Care, San Gerardo Hospital, Via Pergolesi 33, Monza, Italy. <sup>2</sup> Department of Pathophysiology and Transplantation, University of Milan, Via Festa del Perdono 7, Milan, Italy. <sup>3</sup> Department of Anesthesia, Critical Care and Emergency, Fondazione IRCCS Ca' Granda Ospedale Maggiore Policlinico, Via Francesco Sforza 28, Milan, Italy. <sup>4</sup> Department of Medicine, School of Medicine and Surgery, University of Milan-Bicocca, Via Cadore 48, Monza, Italy.

## Acknowledgements

None.

## Competing interests

GB received fees from Dreager Medical for lecturing and consulting outside the scope of this work.

## Availability of data and materials

The datasets and materials (anonymized) can be shared with other researchers on request.

## Funding

The present study was supported by departmental funding.

## Ethics approval

The study was conducted in the general intensive care units of the university-affiliated hospitals San Gerardo, Monza and Fondazione IRCCS Ca' Granda Ospedale Maggiore Policlinico, Milan, both in Italy. Institutional ethical committees of each institution approved the study, and informed consent was obtained according to local recommendations.

## Publisher's Note

Springer Nature remains neutral with regard to jurisdictional claims in published maps and institutional affiliations.

Received: 16 March 2017 Accepted: 6 July 2017

Published online: 20 July 2017

## References

- Matthay MA, Ware LB, Zimmerman GA. The acute respiratory distress syndrome. *J Clin Invest*. 2012;122(8):2731–40.
- Caironi P, Cressoni M, Chiumello D, Ranieri M, Quintel M, Russo SG, Cornejo R, Bugeo G, Carlesso E, Russo R, Caspani L, Gattinoni L. Lung opening and closing during ventilation of acute respiratory distress syndrome. *Am J Respir Crit Care Med*. 2010;181(6):578–86.
- The National Heart, Lung, and Blood Institute ARDS Clinical Trials Network. Higher versus lower positive end-expiratory pressures in patients with the acute respiratory distress syndrome. *N Engl J Med*. 2004;351(4):327–36.
- Mercat A, Richard JC, Vielle B, Expiratory Pressure (Express) Study Group, et al. Positive end-expiratory pressure setting in adults with acute lung injury and acute respiratory distress syndrome: a randomized controlled trial. *JAMA*. 2008;299:646–55.
- Grasso S, Terragni P, Mascia L, et al. Airway pressure-time curve profile (stress index) detects tidal recruitment/hyperinflation in experimental acute lung injury. *Crit Care Med*. 2004;32:1018–27.
- Talmor D, Sarge T, Malhotra A, et al. Mechanical ventilation guided by esophageal pressure in acute lung injury. *N Engl J Med*. 2008;359:2095–104.
- Mauri T, Yoshida T, Bellani G, et al. Esophageal and transpulmonary pressure in the clinical setting: meaning, usefulness and perspectives. *Intensive Care Med*. 2016;42(9):1360–73.

8. Chiumello D, Cressoni M, Carlesso E, et al. Bedside selection of positive end-expiratory pressure in mild, moderate, and severe acute respiratory distress syndrome. *Crit Care Med*. 2014;42(2):252–64.
9. Pelosi P, Goldner M, McKibben A, et al. Recruitment and derecruitment during acute respiratory failure: an experimental study. *Am J Respir Crit Care Med*. 2001;164(1):122–30.
10. Hickling KG. Best compliance during a decremental, but not incremental, positive end-expiratory pressure trial is related to open-lung positive end-expiratory pressure: a mathematical model of acute respiratory distress syndrome lungs. *Am J Respir Crit Care Med*. 2001;163:69–78.
11. Briel M, Meade M, Mercat A, et al. Higher vs lower positive end-expiratory pressure in patients with acute lung injury and acute respiratory distress syndrome: systematic review and meta-analysis. *JAMA*. 2010;303(9):865–73.
12. Bellani G, Laffey JG, Pham T, et al. Epidemiology, patterns of care, and mortality for patients with acute respiratory distress syndrome in intensive care units in 50 countries. *JAMA*. 2016;315(8):788–800.
13. Keenan JC, Formenti P, Marini JJ. Lung recruitment in acute respiratory distress syndrome: what is the best strategy? *Curr Opin Crit Care*. 2014;20:63–8.
14. Fan E, Wilcox ME, Brower RG, et al. Recruitment maneuvers for acute lung injury. A systematic review. *Am J Respir Crit Care Med*. 2008;178(11):1156–63.
15. Frerichs I, Amato MB, van Kaam AH, et al. Chest electrical impedance tomography examination, data analysis, terminology, clinical use and recommendations: consensus statement of the TRANslational EIT developmeNt stuDy group. *Thorax*. 2016;0:1–11.
16. Mauri T, Eronia N, Turrini C, et al. Bedside assessment of the effects of positive end expiratory pressure on lung inflation and recruitment by the helium dilution technique and electrical impedance tomography. *Intensive Care Med*. 2016;42(10):1576–87.
17. Bikker IG, Leonhardt S, Miranda DR, et al. Bedside measurement of changes in lung impedance to monitor alveolar ventilation in dependent and nondependent parts by electrical impedance tomography during a positive end-expiratory pressure trial in mechanically ventilated intensive care unit patients. *Crit Care*. 2010;14(3):R100.
18. Liu S, Tan L, Möller K, et al. Identification of regional overdistension, recruitment and cyclic alveolar collapse with electrical impedance tomography in an experimental ARDS model. *Crit Care*. 2016;20(1):119.
19. Bellani G, Laffey JG, Pham T, et al. Noninvasive ventilation of patients with acute respiratory distress syndrome. insights from the LUNG SAFE study. *Am J Respir Crit Care Med*. 2017;195(1):67–77.
20. Aboab J, Louis B, Jonson B, Brochard L. Relation between PaO<sub>2</sub>/FIO<sub>2</sub> ratio and FIO<sub>2</sub>: a mathematical description. *Intensive Care Med*. 2006;32(10):1494–7.
21. Victorino JA, Borges JB, Okamoto VN, et al. Imbalances in regional lung ventilation: a validation study on electrical impedance tomography. *Am J Respir Crit Care Med*. 2004;169(7):791–800.
22. Frerichs I, Hinz J, Herrmann P, et al. Detection of local lung air content by electrical impedance tomography compared with electron beam CT. *J Appl Physiol*. 2002;93(2):660–6.
23. Frerichs I, Hahn G, Schiffmann H, et al. Monitoring regional lung ventilation by functional electrical impedance tomography during assisted ventilation. *Ann NY Acad Sci*. 1999;873:493–505.
24. Adler A, Amyot R, Guardo R, et al. Monitoring changes in lung air and liquid volumes with electrical impedance tomography. *J Appl Physiol*. 1997;83(5):1762–7.
25. Costa EL, Borges JB, Melo A, et al. Bedside estimation of recruitable alveolar collapse and hyperdistension by electrical impedance tomography. *Intensive Care Med*. 2009;35(6):1132–7.
26. Goligher EC, Kavanagh BP, Rubenfeld GD, et al. Oxygenation response to positive end-expiratory pressure predicts mortality in acute respiratory distress syndrome. A secondary analysis of the LOVS and ExPress trials. *Am J Respir Crit Care Med*. 2014;190(1):70–6.
27. Meier T, Luepschen H, Karsten J, et al. Assessment of regional lung recruitment and derecruitment during a PEEP trial based on electrical impedance tomography. *Intensive Care Med*. 2008;34(3):543–50.
28. Fagerberg A, Stenqvist O, Aneman A. Electrical impedance tomography applied to assess matching of pulmonary ventilation and perfusion in a porcine experimental model. *Crit Care*. 2009;13(2):R34.
29. Hodgson C, Carteaux G, Tuxen D, et al. Hypoxaemic rescue therapies in acute respiratory distress syndrome: why, when, what and which one? *Injury*. 2013;44(12):1700–9.
30. Grasso S, Mascia L, Del Turco M, et al. Effects of recruiting maneuvers in patients with acute respiratory distress syndrome ventilated with protective ventilatory strategy. *Anesthesiology*. 2002;96:795–802.
31. Borges JB, Costa ELV, Suarez-Sipmann F, Widström C, Larsson A, Amato M, et al. Early inflammation mainly affects normally and poorly aerated lung in experimental ventilator-induced lung injury. *Crit Care Med*. 2014;42:e279–87.
32. Borges JB, Costa ELV, Bergquist M, et al. Lung inflammation persists after 27 hours of protective acute respiratory distress syndrome network strategy and is concentrated in the nondependent lung. *Crit Care Med*. 2015;43:e123–32.
33. Derosa S, Borges JB, Segelsjö M, Tannoia A, Pellegrini M, Larsson A, et al. Reabsorption atelectasis in a porcine model of ARDS: regional and temporal effects of airway closure, oxygen, and distending pressure. *J Appl Physiol*. 2013;115:1464–73.
34. Van der Burg PS, Miedema M, de Jongh FH, et al. Cross-sectional changes in lung volume measured by electrical impedance tomography are representative for the whole lung in ventilated preterm infants. *Crit Care Med*. 2014;42(6):1524–30.

Submit your manuscript to a SpringerOpen® journal and benefit from:

- Convenient online submission
- Rigorous peer review
- Open access: articles freely available online
- High visibility within the field
- Retaining the copyright to your article

---

Submit your next manuscript at ► [springeropen.com](http://springeropen.com)