



Published in final edited form as:

*Nat Rev Neurosci.* 2016 September ; 17(9): 592–599. doi:10.1038/nrn.2016.67.

## Time to connect: bringing social context into addiction neuroscience

**Markus Heilig,**

Center for Social and Affective Neuroscience, Department of Clinical and Experimental Medicine (IKE), Linköping University, SE-581 83 Linköping, Sweden

**David H. Epstein,**

Intramural Research Program, National Institute on Drug Abuse, National Institutes of Health, Baltimore, Maryland 21044, USA

**Michael A. Nader,** and

Department of Physiology and Pharmacology, Wake Forest School of Medicine, Winston-Salem, North Carolina 27157, USA

**Yavin Shaham**

Intramural Research Program, National Institute on Drug Abuse, National Institutes of Health, Baltimore, Maryland 21044, USA

### Abstract

Research on the neural substrates of drug reward, withdrawal and relapse has yet to be translated into significant advances in the treatment of addiction. One potential reason is that this research has not captured a common feature of human addiction: progressive social exclusion and marginalization. We propose that research aimed at understanding the neural mechanisms that link these processes to drug seeking and drug taking would help to make addiction neuroscience research more clinically relevant.

---

A large gap exists between the promise of neuroscientific approaches to addiction and what they have delivered. Animal models have helped to identify neural substrates of drug addiction, including those mediating drug reward and reinforcement, protracted withdrawal, craving and relapse<sup>1–7</sup>. Models in which laboratory animals self-administer drugs<sup>8</sup> are widely regarded as valid because rodents and monkeys learn to self-administer most drugs abused by humans<sup>9</sup>. Some medications that are used clinically to treat addiction decrease relapse in laboratory animals<sup>6,10</sup>, showing that animal models of addiction can have postdictive validity. There is also recent, although more-limited, evidence for the true predictive validity of animal models (BOX 1).

Nevertheless, the humbling truth is that the neuroscience of addiction has yet to have a marked impact on clinical treatment<sup>11</sup>. This can be attributed only in part to practical

---

Correspondence to M.H. markus.heilig@liu.se.

Competing interests statement

The authors declare no competing interests.

barriers affecting the treatment of addiction, such as reimbursement issues, inadequate knowledge about available medications or ideologically motivated views that addiction should not be treated with drugs. The most-effective pharma cotherapies currently available for addiction — methadone and buprenorphine maintenance, which are used to treat opioid addiction — were discovered in the 1960s<sup>12</sup> and 1970s<sup>13</sup>, an era preceding neuroscientific attempts to understand the mechanisms of addiction. For cocaine addiction, the only effective treatment to date — contingency management<sup>14</sup> — is based on conditioning principles that date back to Pavlov and Skinner. This state of affairs has led some in the addiction field to question the brain-disease model of addiction<sup>15</sup>, to suggest that addiction research needs to shift away from its current emphasis on neurobiology and to propose that issues of harmful substance use should instead be addressed through policy measures<sup>16</sup>. We disagree with this view. In this Opinion article, we propose a way forward and focus on one possible reason for the disconnection between addiction neuroscience research and clinical advances: the relatively limited extent to which social factors have been integrated into neurobiological addiction research.

Social epidemiology has established a strong link between poor social integration and behaviours that result in alcohol and drug use<sup>17</sup>. Although few neuroscientists would negate the importance of these social factors in addiction, aspects of social integration — such as social inclusion or exclusion — have so far typically not been incorporated into neurobiological studies of addiction. We think that the different ways in which social interactions — positive and negative — influence addiction can be incorporated into these studies, and we predict that doing so will be important for understanding addiction. Below, we discuss some aspects of social interactions that we think are important in human addiction, as well as some of the attempts to model the effects of these interactions in experimental animals, mainly focusing on antagonistic interactions and social exclusion. We conclude by proposing that incorporating social factors into animal and human studies of neurobiological mechanisms of addiction will be important for discovering new treatments.

## Social exclusion and addiction

Decades ago, data such as those from the Alameda County Human Population Laboratory Study showed that approximately 35% of men at the low end of the social-integration spectrum, but only about 10% at the high end, engaged in behaviours with strong negative effects on health, including heavy use of alcohol and drugs<sup>17</sup>. Conversely, the level of social integration has been shown to be associated with decreased relapse risk among treatment-seeking drug users<sup>18</sup>. Social interactions have multiple effects that can be hypothesized to differentially affect addiction. They can provide many of the healthy, non-drug reinforcers that successfully compete with drug rewards and that might also protect against the negative consequences of social stressors. Alternatively, social interactions can be highly stressful when they are of an antagonistic or excluding nature.

Stress provokes relapse to drug seeking in humans<sup>11</sup> and laboratory animals<sup>19</sup>, but stressors typically used in animal models of addiction are discrete, experimenter-imposed events, such as footshocks<sup>19</sup>. By contrast, in drug users, stressful relapse triggers are typically social; they include, for example, conflicts in the workplace and the family, lack of social support

and problems associated with low socioeconomic status<sup>20</sup>. Even in individuals who are socially well integrated when they start using drugs, continued drug use can often lead to social exclusion, which in turn promotes continued drug use. Specifically, during early stages of drug use, the drug is typically taken in a recreational, impulsive manner. However, as addiction develops, drug use is thought to become increasingly compulsive. As drug use escalates and transitions into compulsive drug use, these individuals typically become increasingly impaired in their ability to function socially. This results in further social marginalization and exclusion — factors that promote further drug use<sup>21</sup>.

Below, we consider some of the neural mechanisms by which social exclusion might promote addiction. We are not attempting an exhaustive review; rather, we want to show that the study of social factors can be integrated with the predominant neurobiological approaches in current addiction research. The need to integrate social factors applies equally to animal models that attempt to identify neural and molecular substrates of addiction and to human experimental and therapeutic studies.

### Neural substrates

Laboratory procedures have been developed that allow the experience of social exclusion to be induced in healthy human volunteers, establishing some of the neural correlates of this state. Experimentally induced social exclusion activates a brain network that overlaps with the pain matrix, which includes the insula<sup>22,23</sup>. Activity in the insula also correlates with the intensity of subjective craving for most addictive drugs in humans, suggesting that this region may be involved in both social exclusion and drug addiction<sup>24</sup>. A mechanistic role of insula activation in drug craving is supported by findings that insula lesions caused by stroke<sup>25</sup> and insula-targeted transcranial magnetic stimulation<sup>26</sup> both reduce cigarette craving and smoking.

The insula may also have a role in alcoholism. Insula perfusion, as measured by arterial spin-labelling MRI, is progressively decreased in alcohol-addicted individuals<sup>27</sup>, and alcoholism is also associated with a loss of insula grey matter<sup>28</sup> (FIG. 1). This decrease in insula grey matter involves a profound loss of von Economo neurons (FIG. 1), which are large projection neurons found mostly in highly social species and thought to be crucial for prosocial behaviours<sup>29</sup>. Finally, insula activity, as measured by functional MRI, is associated with important abilities needed for adaptive social behaviours, such as empathy and rational decision making under risk<sup>30,31</sup>. The importance of these observations for addiction is suggested in the finding that low insula activity in a risk task predicted increased risk of relapse in abstinent methamphetamine users<sup>32</sup>.

Thus, findings to date point to the insula as a site of overlap for brain responses involved in the processing of social inclusion and exclusion, and drug craving. Future research should establish whether these two processes are mechanistically linked through insula-related circuits. Insula activity has been observed in many tasks that probe multiple, seemingly unrelated cognitive and affective functions. However, there have been interesting recent attempts to integrate these observations into a unified conceptual framework of insula function. These attempts have focused on the handling of risk<sup>31</sup> and the attribution of salience<sup>33</sup> — functions that are of particular relevance in addiction.

It is unlikely that the insula alone can account for the effects of social exclusion on addiction. Striatal dopamine function seems to be critical as well, at least in males. In subordinate male monkeys, low availability of striatal dopamine D2/3 receptors (D2/3Rs; commonly used imaging agents do not distinguish between these closely related subtypes) is associated with increased cocaine self-administration<sup>34</sup> (FIG. 2). In a possible human correlate, low striatal D2/3R availability is associated with low social status and low perceived social support in healthy volunteers<sup>35</sup>, and low availability of D2/3Rs is a consistent observation in drug users, across drug classes<sup>36</sup>. We speculate that the development of drug addiction involves a progressive decrease in D2/3R availability caused by both the drug use and the resulting social exclusion.

The findings regarding the role of the insula and striatum in social exclusion might be related, as the two structures are anatomically and functionally connected. In non-human primates, anterior insular regions project to the ventromedial part of the ventral striatum<sup>37</sup>. In humans, recent evidence shows that connectivity between these structures is functionally involved in risk preferences when pursuing rewards. Specifically, activity in the ventral striatum and anterior insula inversely predicts risky choices, and individuals with stronger anatomical connectivity between the right anterior insula and ventral striatum (measured using MRI-based tractography) demonstrated less-risky gambling choices<sup>38</sup>.

The anterior insula also has extensive reciprocal connections with the amygdala complex<sup>39,40</sup>, and these connections might link social stress with drug seeking as well. Amygdala activation is crucial for initiating stress-induced alcohol-seeking behaviour in rats<sup>41</sup>, and reductions in functional connectivity between the insula and the amygdala have been reported in alcohol-addicted individuals<sup>42</sup>.

Thus, the social 'spiral of distress' is a complex process, and one that is probably influenced by the activity of multiple circuits. On the basis of the observations reviewed above, we propose that a circuit including the anterior insula, ventral striatum and parts of the amygdala complex may contribute to this process (FIG. 3).

### Endogenous opioids

Endogenous opioids, through actions on  $\mu$ -opioid receptors (MORs), play an important part in the reward associated with affiliative behaviours and counteract the aversive consequences of social stress; these roles of endogenous opioids are thought to involve the insula, amygdala and ventral striatum<sup>22,43,44</sup>. Mice lacking MORs show profound deficits in attachment<sup>45</sup>. In non-human primates, systemic administration of MOR antagonists increases rates of grooming and other affiliative behaviours in what is thought to be an attempt to compensate for blockade of MOR function<sup>46</sup>, whereas low doses of MOR agonists dampen or eliminate distress responses to social separation of dog puppies<sup>47</sup>. In addition, functional genetic variation at the locus that encodes the MOR moderates mother–infant attachment in monkeys<sup>48</sup> and in humans<sup>49</sup>.

In humans, MORs are highly expressed in the insula<sup>50</sup>, and MORs in this structure have a role in social processes. In healthy volunteers, functional genetic MOR variation moderates levels of subjective distress and insula activity in response to social-exclusion stress<sup>51</sup>. A

recent positron emission tomography study further showed that social acceptance is associated with MOR activation in the anterior insula and the amygdala<sup>52</sup>. A key role for endogenous opioids in the link between addiction and social pain has recently been proposed<sup>53</sup>. In that context, it is interesting that decreased endogenous opioid release was found in individuals with pathological gambling disorder, a behavioural addiction in which brain changes are not confounded by the pharmacological effects of illicit drug use<sup>54</sup>.

Combining the neuroanatomical and neurochemical observations above, we propose a set of testable hypotheses. If the aversive experience of social rejection and exclusion can be buffered by MOR activation, possibly within the insula–amygdala–ventral striatum circuit (FIG. 3), then people with impaired endogenous opioid function, exposure to social stress, or both will experience relief of distress when taking drugs that directly or indirectly activate MORs. Examples of drugs that directly activate MORs are opiates such as heroin and oxycodone. Alcohol, which has long been postulated as a self-medication agent for people with difficulties in experiencing social attachment<sup>55</sup>, also increases endogenous opioid levels in humans<sup>56</sup>. Thus, social integration, by restoring normal function of endogenous opioid systems, can decrease the need to activate these systems through alcohol or opioid use and subsequently can decrease drug use and relapse. Improving the social integration of drug users through opportunities for housing, jobs and meaningful relationships is therefore not merely a nonspecific intervention but rather a neurobiologically specific and critically important way to decrease drug use.

### Social cognition

Impairments of cognitive function are both risk factors for and consequences of drug use<sup>57,58</sup>. Cognitive impairments affect functions that may not be viewed as primarily social per se but nevertheless have an impact on the ability to function socially. For example, drug users tend to make intertemporal choices favouring small, immediate drug rewards over more-advantageous but temporally more-distant outcomes<sup>59</sup>. Indeed, such steep delay discounting is an established psychological trait of addicted individuals<sup>60</sup> and impedes rehabilitation, the ability to comply with social norms and the achievement of healthy personal goals. Furthermore, empathy and recognition of emotions in others are impaired in drug users<sup>61,62</sup>, and these deficits pose strong challenges to rehabilitation.

We hypothesize that impaired decision making and social exclusion form the elements of a vicious cycle of their own. Homelessness, a social problem strongly associated with drug addiction<sup>63</sup>, represents an extreme of social exclusion and low access to resources. Impaired value-based decision making (such as making disadvantageous intertemporal choices) contributes to and maintains this condition; consistently choosing to buy drugs today over paying rent next week contributes to the risk of homelessness. But a lack of resources that is characteristic of homelessness per se promotes disadvantageous decision making of the kind commonly observed in drug users<sup>64</sup>. We know of no research that directly tests whether social exclusion contributes to impaired decision making in addiction, but we think that this will be important to examine in future studies.

## Animal models of addiction

Animal models have been in use for many years to study neural substrates of addiction, in the hope of identifying mechanisms that could be targeted for treatment. The operant drug self-administration model has long been a cornerstone of preclinical research on addiction. In this model, over 90% of single-housed rodents or monkeys will voluntarily self-administer opiates or psycho-stimulants<sup>8,65</sup>. This percentage, which was originally cited as evidence that these drugs are highly addictive, was realized over time to reflect a shortcoming of the model, because it is about four- to fivefold higher than the percentage of human drug users who transition from initial drug use to compulsive use<sup>66</sup>. Therefore, when reassessing the way we have approached animal models, this model should be one of the first examined.

Indeed, among humans exposed to addictive drugs such as heroin, cocaine and alcohol, transition to addiction is the exception rather than the rule, occurring in about 20% of the people exposed to these drugs<sup>66</sup>. Genetic vulnerability<sup>67</sup> and a lack of access to non-drug alternatives<sup>68</sup> are risk factors for the transition to compulsive use. Furthermore, in animal models, addiction cannot be equated with operant drug self-administration as such, because all commonly used diagnostic criteria require that there be continued use despite adverse consequences. These insights have been incorporated into animal models<sup>7,69–71</sup>, producing results that have led to re-evaluations of earlier results from traditional drug self-administration<sup>7,70</sup>.

For example, when rats or monkeys are given unlimited access, 24 hours a day, to psychostimulant drugs but no other alternative, competing rewards, most die of overdose within several weeks<sup>72,73</sup>. By contrast, more than 80% of rats given extended daily access to cocaine or methamphetamine stop or significantly decrease self-administration when given a mutually exclusive choice between the drug and a non-drug reward, such as palatable food<sup>74,75</sup>, or when drug self-administration also results in intermittent footshock punishment<sup>76,77</sup>. This consideration of contingencies — that is, the availability of non-drug choices or the adverse consequences of choosing drug — has been a good start to refining animal models of addiction. What should come next, we think, is to consider social factors<sup>78–80</sup>.

## Modelling social factors

In this Opinion article, we focus on social exclusion, but readers should be aware that animal studies of addiction have examined other social phenomena and other stressors, such as maternal separation, early social isolation, food restriction, restraint, intermittent footshock and social defeat<sup>79–82</sup>. However, with some exceptions<sup>19,80,83</sup>, these lines of research have not been integrated with research aimed at identifying the underlying neural mechanisms of addiction. A probable reason for this is that the effects of many stressors on drug self-administration are relatively weak, procedure-dependent and often not reproducible across laboratories<sup>81,82</sup>. For example, a seemingly promising finding was that oral morphine intake and preference were markedly higher in single-housed rats than in rats housed with conspecifics in a large, enriched environment (known as the ‘Rat Park’)<sup>84</sup>. However, the interpretation of these data turned out to be problematic. Oral morphine, which

has a bitter taste, is only a weak reinforcer to rats and is rarely preferred over water<sup>85</sup>. Subsequent attempts to demonstrate the Rat Park or ‘social housing’ effect with intravenous opiates, which are stronger reinforcers, were unsuccessful<sup>86</sup>.

More-robust effects of isolated versus social housing have been seen on home-cage intake of alcohol<sup>87</sup>. The alcohol data also suggest something more subtle: socially housed rats develop social ranks and, among these rats, alcohol intake varies according to social rank<sup>69</sup>. This work was part of the background for more-recent studies on the inhibitory effect of environmental enrichment on cocaine self-administration and relapse in rats<sup>81,88</sup>. In social animals, low rank (which can be viewed as a correlate of social exclusion<sup>78,89</sup>) has been implicated to be a determinant of drug self-administration. Subordinate male rats and monkeys drink more alcohol than their dominant conspecifics, and subordinate rats drink more etonitazene (a potent opiate agonist) than their dominant conspecifics<sup>87,90–92</sup>. However, in rats, these social-rank differences in drug intake persisted for only the first few months of alcohol or opiate availability; after many months of drug access, all rats, independent of social status, consumed high amounts of the drugs<sup>87,91</sup>.

In animal models of cocaine addiction, the picture is more complicated and there are major species differences. In rats, social rank has no effect on cocaine self-administration and reinstatement of cocaine seeking<sup>93</sup>, whereas, in cynomolgus monkeys, subordinate males self-administer more cocaine than do their dominant conspecifics<sup>34</sup>. The differences in cocaine self-administration in the monkeys that are related to social rank seem to involve striatal D2/3Rs; social housing increased striatal D2/3R availability in dominant but not subordinate male monkeys, and this increase seemed to initially protect the dominant male monkeys from self-administering high amounts of cocaine (FIG. 2a). These data are consistent with findings in humans that a high availability of striatal D2/3Rs confers resistance to addiction<sup>94</sup>.

However, an opposite pattern emerges in female monkeys: dominant females will learn to self-administer cocaine at lower doses than do subordinates, suggesting that the dominant females are more sensitive to the reinforcing effects of cocaine. This occurs despite higher striatal D2/3R availability in dominant female monkeys than in subordinates, similar to what had been observed in male monkeys<sup>95</sup> (FIG. 2b). These findings suggest that social rank has different effects on cocaine self-administration in males and females, and that striatal D2/3R expression (and, by implication, function) has a minimal role in female self-administration of cocaine<sup>78</sup>. Given the increasing awareness that sex differences need to be considered for most human behaviours<sup>96</sup>, these findings are of considerable interest.

## Conclusions and implications

Confrontational and punitive attitudes to drug addiction remain widespread. We hope that, at a minimum, neurobiological insights into the mechanisms through which social exclusion promotes addiction can foster an understanding that such attitudes are counter productive. This, in turn, should help to reduce the stigma of addiction and promote better-informed policies. In addition, we hope that incorporating the considerations that we have discussed can stimulate research, ultimately resulting in improved treatments.

In the search for biological mechanisms that could be targeted by novel treatments, addiction needs to be defined as a pattern of self-administration that is dysfunctional and that occurs in spite of adverse consequences and/or of the availability of non-drug reinforcers. Social functioning needs to be assessed as both a determinant of this behaviour and as a variable affected by it. Critical species differences in social behaviour, as well as individual differences within species — including sex differences — need to be considered. Potential treatments need to be assessed for their ability to influence the ‘addictive’ behaviour in the vulnerable laboratory animals that display it. Combining all of this into any single study is a lot to ask, but incorporating more than one of these components into modern neuroscience studies of addiction in animal models is an achievable goal<sup>7,97</sup>.

To maximize chances of success, preclinical research needs to work in concert with translational studies on social exclusion in drug users. Several of the methodologies that have been successfully used in healthy volunteers can be used in addiction research, and some of these lend themselves to being combined with functional brain imaging, whereby the neural underpinnings of processes linking social factors to addictive behaviours can be mapped<sup>98</sup>. Pharmacological manipulations targeting opioid systems could initially help to clarify causal links between social exclusion, distress reactions and drug use. Eventually, this line of research could help to evaluate candidate treatments<sup>99</sup> and, most importantly, bring forward novel treatments.

For clinicians, it is hard to spend a day with patients who struggle with addictive disorders without being struck by the impaired social interactions and lack of access to resources that frequently become the dominant themes of their lives. The central role of these factors in clinical addiction needs to be reflected in both basic and clinical addiction neuroscience. Despite ambitious attempts to elucidate some of these processes in animal models<sup>80,97</sup>, our understanding of their neural and molecular mechanisms remains vastly insufficient.

## Acknowledgments

The writing of this article was supported in part by a grant from the Swedish Research Council (M.H.), the Intramural Research Program of the US National Institutes of Health and the US National Institute on Drug Abuse (D.H.E. and Y.S.) and grants DA010584 and DA017763 (M.A.N.). The authors are grateful to S. N. Haber at the University of Rochester, New York, USA, and her co-workers for producing and providing Figure 3. The authors apologize to their many friends and colleagues for not citing many reviews and empirical papers relevant to the topic of their paper, owing to format restrictions.

## Glossary

### **Compulsive drug use**

Continued use of a drug despite (known) adverse consequences

### **Contingency management**

A treatment based on systematic reinforcement of a desired, clinically beneficial behaviour

### **Craving**

The subjective experience of a strong desire to consume a particular substance, to experience its effects or to avoid the symptoms of its withdrawal



**Drug addiction**

A clinical condition in which an individual knowingly continues to pursue and consume a chemical substance in a manner that is harmful to that individual or to others

**Pain matrix**

A term proposed for a set of brain structures, including the anterior insula and the dorsal anterior cingulate cortex, that are consistently shown by functional MRI to be activated during physical pain

**Postdictive validity**

The ability to retrospectively demonstrate an established human phenomenon in an animal model

**Predictive validity**

In the context of medications development, the extent to which a drug effect in laboratory animals prospectively predicts therapeutic effects of the same drug in humans

**Protracted withdrawal**

The affective symptoms of drug withdrawal — including low mood, elevated anxiety and increased sensitivity to stress — that persist beyond the time frame of acute physical withdrawal (which typically does not last beyond 3–7 days).

**Reinstatement**

In the context of addiction research, the resumption of drug seeking after extinction of the drug-reinforced responding, induced by exposure to priming doses of drug, drug cues or stressors

**Relapse**

Resumption of drug taking after achieving abstinence

**Social defeat**

A type of social stress used in laboratory-animal studies that is typically induced by placing a rodent in a cage with an unfamiliar rodent that is expected to attack and defeat the intruder, owing to increased strength, aggression or established dominance

**Social integration**

A central concept of sociology, developed by the French sociologist Émile Durkheim, that refers to the web of relationships and interactions — family, kinship groups, traditions or economic activity — through which individuals are connected to each other to form a society. Social exclusion is defined as a failure of this process.

**References**

1. Robison AJ, Nestler EJ. Transcriptional and epigenetic mechanisms of addiction. *Nat. Rev. Neurosci.* 2011; 12:623–637. [PubMed: 21989194]
2. Koob GF, Le Moal M. Addiction and the brain antireward system. *Annu. Rev. Psychol.* 2008; 59:29–53. [PubMed: 18154498]
3. Wise RA. Dopamine, learning and motivation. *Nat. Rev. Neurosci.* 2004; 5:483–494. [PubMed: 15152198]

4. Kalivas PW. The glutamate homeostasis hypothesis of addiction. *Nat. Rev. Neurosci.* 2009; 10:561–572. [PubMed: 19571793]
5. Everitt BJ, Robbins TW. Neural systems of reinforcement for drug addiction: from actions to habits to compulsion. *Nat. Neurosci.* 2005; 8:1481–1489. [PubMed: 16251991]
6. Bossert JM, Marchant NJ, Calu DJ, Shaham Y. The reinstatement model of drug relapse: recent neurobiological findings, emerging research topics, and translational research. *Psychopharmacology.* 2013; 229:453–457. [PubMed: 23685858]
7. Piazza PV, Deroche-Gamonet V. A multistep general theory of transition to addiction. *Psychopharmacology.* 2013; 229:387–413. [PubMed: 23963530]
8. Schuster CR, Thompson T. Self administration of and behavioral dependence on drugs. *Annu. Rev. Pharmacol.* 1969; 9:483–502. [PubMed: 4978013]
9. Brady JV. Animal models for assessing drugs of abuse. *Neurosci. Biobehav. Rev.* 1991; 15:35–43. [PubMed: 2052196]
10. Epstein DH, Preston KL, Stewart J, Shaham Y. Toward a model of drug relapse: an assessment of the validity of the reinstatement procedure. *Psychopharmacology.* 2006; 189:1–16. [PubMed: 17019567]
11. Sinha R, Shaham Y, Heilig M. Translational and reverse translational research on the role of stress in drug craving and relapse. *Psychopharmacology.* 2011; 218:69–82. [PubMed: 21494792]
12. Dole VP, Nyswander MA. Medical treatment for diacetylmorphine (heroin) addiction. A clinical trial with methadone hydrochloride. *JAMA.* 1965; 193:646–650. [PubMed: 14321530]
13. Jasinski DR, Pevnick JS, Griffith JD. Human pharmacology and abuse potential of the analgesic buprenorphine: a potential agent for treating narcotic addiction. *Arch. Gen. Psychiatry.* 1978; 35:501–516. [PubMed: 215096]
14. Higgins ST, et al. A behavioral approach to achieving initial cocaine abstinence. *Am. J. Psychiatry.* 1991; 148:1218–1224. [PubMed: 1883001]
15. Satel S, Lilienfeld SO. Addiction and the brain-disease fallacy. *Front. Psychiatry.* 2013; 4:141. [PubMed: 24624096]
16. Kalant H. What neurobiology cannot tell us about addiction. *Addiction.* 2010; 105:780–789. [PubMed: 19919596]
17. Berkman, LF., Kawachi, I. *Social Epidemiology.* Oxford Univ. Press; 2000.
18. Havassy BE, Hall SM, Wasserman DA. Social support and relapse: commonalities among alcoholics, opiate users, and cigarette smokers. *Addict. Behav.* 1991; 16:235–246. [PubMed: 1663695]
19. Mantsch JR, Baker DA, Funk D, Le AD, Shaham Y. Stress-induced reinstatement of drug seeking: 20 years of progress. *Neuropsychopharmacology.* 2016; 41:335–356. [PubMed: 25976297]
20. Marlatt GA, Baer JS, Donovan DM, Kivlahan DR. Addictive behaviors: etiology and treatment. *Annu. Rev. Psychol.* 1988; 39:223–252. [PubMed: 3278676]
21. Brownell KD, Marlatt GA, Lichtenstein E, Wilson GT. Understanding and preventing relapse. *Am. Psychol.* 1986; 41:765–782. [PubMed: 3527003]
22. Eisenberger NI. The pain of social disconnection: examining the shared neural underpinnings of physical and social pain. *Nat. Rev. Neurosci.* 2012; 13:421–434. [PubMed: 22551663]
23. Wager TD, et al. An fMRI-based neurologic signature of physical pain. *N. Engl. J. Med.* 2013; 368:1388–1397. [PubMed: 23574118]
24. Garavan H. Insula and drug cravings. *Brain Struct. Funct.* 2010; 214:593–601. [PubMed: 20512373]
25. Naqvi NH, Rudrauf D, Damasio H, Bechara A. Damage to the insula disrupts addiction to cigarette smoking. *Science.* 2007; 315:531–534. [PubMed: 17255515]
26. Dinur-Klein L, et al. Smoking cessation induced by deep repetitive transcranial magnetic stimulation of the prefrontal and insular cortices: a prospective, randomized controlled trial. *Biol. Psychiatry.* 2014; 76:742–749. [PubMed: 25038985]
27. Sullivan EV, et al. A selective insular perfusion deficit contributes to compromised salience network connectivity in recovering alcoholic men. *Biol. Psychiatry.* 2013; 74:547–555. [PubMed: 23587427]

28. Senatorov VV, et al. Reduced anterior insula, enlarged amygdala in alcoholism and associated depleted von Economo neurons. *Brain*. 2015; 138:69–79. [PubMed: 25367022]
29. Butti C, Santos M, Uppal N, Hof PR. Von Economo neurons: clinical and evolutionary perspectives. *Cortex*. 2013; 49:312–326. [PubMed: 22130090]
30. Naqvi NH, Gaznick N, Tranel D, Bechara A. The insula: a critical neural substrate for craving and drug seeking under conflict and risk. *Ann. NY Acad. Sci.* 2014; 1316:53–70. [PubMed: 24690001]
31. Singer T, Critchley HD, Preuschoff K. A common role of insula in feelings, empathy and uncertainty. *Trends Cogn. Sci.* 2009; 13:334–340. [PubMed: 19643659]
32. Gowin JL, et al. Attenuated insular processing during risk predicts relapse in early abstinent methamphetamine-dependent individuals. *Neuropsychopharmacology*. 2014; 39:1379–1387. [PubMed: 24317375]
33. Uddin LQ. Salience processing and insular cortical function and dysfunction. *Nat. Rev. Neurosci.* 2015; 16:55–61. [PubMed: 25406711]
34. Morgan D, et al. Social dominance in monkeys: dopamine D2 receptors and cocaine self-administration. *Nat. Neurosci.* 2002; 5:169–174. [PubMed: 11802171]
35. Martinez D, et al. Dopamine type 2/3 receptor availability in the striatum and social status in human volunteers. *Biol. Psychiatry*. 2010; 67:275–278. [PubMed: 19811777]
36. Volkow ND, Fowler JS, Wang GJ, Swanson JM, Telang F. Dopamine in drug abuse and addiction: results of imaging studies and treatment implications. *Arch. Neurol.* 2007; 64:1575–1579. [PubMed: 17998440]
37. Chikama M, McFarland NR, Amaral DG, Haber SN. Insular cortical projections to functional regions of the striatum correlate with cortical cytoarchitectonic organization in the primate. *J. Neurosci.* 1997; 17:9686–9705. [PubMed: 9391023]
38. Leong JK, Pestilli F, Wu CC, Samanez-Larkin GR, Knutson B. White-matter tract connecting anterior insula to nucleus accumbens correlates with reduced preference for positively skewed gambles. *Neuron*. 2016; 89:63–69. [PubMed: 26748088]
39. Cho YT, Ernst M, Fudge JL. Cortico-amygdala-striatal circuits are organized as hierarchical subsystems through the primate amygdala. *J. Neurosci.* 2013; 33:14017–14030. [PubMed: 23986238]
40. Nieuwenhuys R. The insular cortex: a review. *Prog. Brain Res.* 2012; 195:123–163. [PubMed: 22230626]
41. Heilig M, Koob GF. A key role for corticotropin-releasing factor in alcohol dependence. *Trends Neurosci.* 2007; 30:399–406. [PubMed: 17629579]
42. Orban C, et al. Resting state synchrony in anxiety-related circuits of abstinent alcohol-dependent patients. *Am. J. Drug Alcohol Abuse*. 2013; 39:433–440. [PubMed: 24200213]
43. Machin AJ, Dunbar RIM. The brain opioid theory of social attachment: a review of the evidence. *Behaviour*. 2011; 148:985–1025.
44. Panksepp J, Herman BH, Vilberg T, Bishop P, DeEsquinazi FG. Endogenous opioids social behavior. *Neurosci. Biobehav. Rev.* 1980; 4:473–487. [PubMed: 6258111]
45. Moles A, Kieffer BL, D'Amato FR. Deficit in attachment behavior in mice lacking the  $\mu$ -opioid receptor gene. *Science*. 2004; 304:1983–1986. [PubMed: 15218152]
46. Fabre-Nys C, Meller RE, Keverne EB. Opiate antagonists stimulate affiliative behaviour in monkeys. *Pharmacol. Biochem. Behav.* 1982; 16:653–659. [PubMed: 6280208]
47. Panksepp J, Herman B, Conner R, Bishop P, Scott JP. The biology of social attachments: opiates alleviate separation distress. *Biol. Psychiatry*. 1978; 13:607–618. [PubMed: 83167]
48. Barr CS, et al. Variation at the mu-opioid receptor gene (*OPRM1*) influences attachment behavior in infant primates. *Proc. Natl Acad. Sci. USA*. 2008; 105:5277–5281. [PubMed: 18378897]
49. Copeland WE, et al. Child  $\mu$ -opioid receptor gene variant influences parent-child relations. *Neuropsychopharmacology*. 2011; 36:1165–1170. [PubMed: 21326192]
50. Baumgartner U, et al. High opiate receptor binding potential in the human lateral pain system. *Neuroimage*. 2006; 30:692–699. [PubMed: 16337817]

51. Way BM, Taylor SE, Eisenberger NI. Variation in the  $\mu$ -opioid receptor gene (*OPRM1*) is associated with dispositional and neural sensitivity to social rejection. *Proc. Natl Acad. Sci. USA*. 2009; 106:15079–15084. [PubMed: 19706472]
52. Hsu DT, et al. Response of the  $\mu$ -opioid system to social rejection and acceptance. *Mol. Psychiatry*. 2013; 18:1211–1217. [PubMed: 23958960]
53. Lutz PE, Kieffer BL. The multiple facets of opioid receptor function: implications for addiction. *Curr. Opin. Neurobiol.* 2013; 23:473–479. [PubMed: 23453713]
54. Mick I, et al. Blunted endogenous opioid release following an oral amphetamine challenge in pathological gamblers. *Neuropsychopharmacology*. 2016; 41:1742–1750. [PubMed: 26552847]
55. Khantzian EJ. The self-medication hypothesis of substance use disorders: a reconsideration and recent applications. *Harv. Rev. Psychiatry*. 1997; 4:231–244. [PubMed: 9385000]
56. Mitchell JM, et al. Alcohol consumption induces endogenous opioid release in the human orbitofrontal cortex and nucleus accumbens. *Sci. Transl Med.* 2012; 4:116ra6.
57. Lucantonio F, Stalnaker TA, Shaham Y, Niv Y, Schoenbaum G. The impact of orbitofrontal dysfunction on cocaine addiction. *Nat. Neurosci.* 2012; 22:358–366.
58. de Wit H. Impulsivity as a determinant and consequence of drug use: a review of underlying processes. *Addict. Biol.* 2009; 14:22–31. [PubMed: 18855805]
59. Bickel WK, Marsch LA. Toward a behavioral economic understanding of drug dependence: delay discounting processes. *Addiction*. 2001; 96:73–86. [PubMed: 11177521]
60. MacKillop J, et al. Delayed reward discounting and addictive behavior: a meta-analysis. *Psychopharmacology*. 2011; 216:305–321. [PubMed: 21373791]
61. Uekermann J, Daum I. Social cognition in alcoholism: a link to prefrontal cortex dysfunction? *Addiction*. 2008; 103:726–735. [PubMed: 18412750]
62. Preller KH, et al. Impaired emotional empathy and related social network deficits in cocaine users. *Addict. Biol.* 2014; 19:452–466. [PubMed: 23800218]
63. North CS, Eyrich KM, Pollio DE, Spitznagel EL. Are rates of psychiatric disorders in the homeless population changing? *Am. J. Publ. Health*. 2004; 94:103–108.
64. Mullainathan S, Shafir E. *Scarcity: Why Having Too Little Means So Much*. 2013 Times Books.
65. Wise RA, Bozarth MA. A psychomotor stimulant theory of addiction. *Psychol. Rev.* 1987; 94:469–492. [PubMed: 3317472]
66. Anthony JC, Warner LA, Kessler RC. Comparative epidemiology of dependence on tobacco, alcohol, controlled substances, and inhalants: basic findings from the National Comorbidity Survey. *Exp. Clin. Psychopharmacol.* 1994; 2:244–268.
67. Kendler KS, et al. Recent advances in the genetic epidemiology and molecular genetics of substance use disorders. *Nat. Neurosci.* 2012; 15:181–189. [PubMed: 22281715]
68. Lopez-Quintero C, et al. Probability and predictors of transition from first use to dependence on nicotine, alcohol, cannabis, and cocaine: results of the National Epidemiologic Survey on Alcohol and Related Conditions (NESARC). *Drug Alcohol Depend.* 2011; 115:120–130. [PubMed: 21145178]
69. Wolffgramm J, Heyne A. From controlled drug intake to loss of control: the irreversible development of drug addiction in the rat. *Behav. Brain Res.* 1995; 70:77–94. [PubMed: 8519431]
70. Ahmed SH. Validation crisis in animal models of drug addiction: beyond non-disordered drug use toward drug addiction. *Neurosci. Biobehav. Rev.* 2010; 35:172–184. [PubMed: 20417231]
71. Nader MA, Woolverton WL. Effects of increasing the magnitude of an alternative reinforcer on drug choice in a discrete-trials choice procedure. *Psychopharmacology*. 1991; 105:169–174. [PubMed: 1796123]
72. Bozarth MA, Wise RA. Toxicity associated with long-term intravenous heroin and cocaine self-administration in the rat. *JAMA*. 1985; 254:81–83. [PubMed: 4039767]
73. Johanson CE, Balster RL, Bonese K. Self-administration of psychomotor stimulant drugs: the effects of unlimited access. *Pharmacol. Biochem. Behav.* 1976; 4:45–51. [PubMed: 4818]
74. Cantin L, et al. Cocaine is low on the value ladder of rats: possible evidence for resilience to addiction. *PLoS ONE*. 2010; 5:e11592. [PubMed: 20676364]

75. Caprioli D, et al. Effect of the novel positive allosteric modulator of metabotropic glutamate receptor 2 AZD8529 on incubation of methamphetamine craving after prolonged voluntary abstinence in a rat model. *Biol. Psychiatry*. 2015; 78:463–473. [PubMed: 25861699]
76. Deroche-Gamonet V, Belin D, Piazza PV. Evidence for addiction-like behavior in the rat. *Science*. 2004; 305:1014–1017. [PubMed: 15310906]
77. Krasnova IN, et al. Incubation of methamphetamine and palatable food craving after punishment-induced abstinence. *Neuropsychopharmacology*. 2014; 39:2008–2016. [PubMed: 24584329]
78. Nader MA, Banks ML. Environmental modulation of drug taking: nonhuman primate models of cocaine abuse and PET neuroimaging. *Neuropharmacology*. 2014; 76:510–517. [PubMed: 23748095]
79. Bardo MT, Neisewander JL, Kelly TH. Individual differences and social influences on the neurobehavioral pharmacology of abused drugs. *Pharmacol. Rev.* 2013; 65:255–290. [PubMed: 23343975]
80. Miczek KA, Yap JJ, Covington HE III. Social stress, therapeutics and drug abuse: preclinical models of escalated and depressed intake. *Pharmacol. Ther.* 2008; 120:102–128. [PubMed: 18789966]
81. Neisewander JL, Peartree NA, Pentkowski NS. Emotional valence and context of social influences on drug abuse-related behavior in animal models of social stress and prosocial interaction. *Psychopharmacology*. 2012; 224:33–56. [PubMed: 22955569]
82. Lu L, Shepard JD, Hall FS, Shaham Y. Effect of environmental stressors on opiate and psychostimulant reinforcement, reinstatement and discrimination in rats: a review. *Neurosci. Biobehav. Rev.* 2003; 27:457–491. [PubMed: 14505687]
83. Bruchas MR, Land BB, Chavkin C. The dynorphin/kappa opioid system as a modulator of stress-induced and pro-addictive behaviors. *Brain Res.* 2010; 1314:44–55. [PubMed: 19716811]
84. Alexander BK, Coombs RB, Hadaway PF. The effect of housing and gender on morphine self-administration in rats. *Psychopharmacology*. 1978; 58:175–179. [PubMed: 98787]
85. Meisch, RA., Carroll, ME. *Methods of Assessing the Reinforcing Properties of Abused Drugs*. Bozarth, MA., editor. Springer; 1987. p. 143-161.
86. Bozarth MA, Murray A, Wise RA. Influence of housing conditions on the acquisition of intravenous heroin and cocaine self-administration in rats. *Pharmacol. Biochem. Behav.* 1989; 33:903–907. [PubMed: 2616610]
87. Wolffgramm J, Heyne A. Social behavior, dominance, and social deprivation of rats determine drug choice. *Pharmacol. Biochem. Behav.* 1991; 38:389–399. [PubMed: 2057508]
88. Solinas M, Thiriet N, Chauvet C, Jaber M. Prevention and treatment of drug addiction by environmental enrichment. *Prog. Neurobiol.* 2010; 92:572–592. [PubMed: 20713127]
89. Blanchard DC, Blanchard RJ. Behavioral correlates of chronic dominance-subordination relationships of male rats in a seminatural situation. *Neurosci. Biobehav Rev.* 1990; 14:455–462. [PubMed: 2287482]
90. Blanchard RJ, Hori K, Tom P, Blanchard DC. Social structure and ethanol consumption in the laboratory rat. *Pharmacol. Biochem. Behav.* 1987; 28:437–442. [PubMed: 3432310]
91. Heyne A. The development of opiate addiction in the rat. *Pharmacol. Biochem. Behav.* 1996; 53:11–25. [PubMed: 8848439]
92. Helms CM, McClintick MN, Grant KA. Social rank, chronic ethanol self-administration, and diurnal pituitary-adrenal activity in cynomolgus monkeys. *Psychopharmacology*. 2012; 224:133–143. [PubMed: 22526537]
93. Jupp B, et al. Social dominance in rats: effects on cocaine self-administration, novelty reactivity and dopamine receptor binding and content in the striatum. *Psychopharmacology*. 2015; 233:579–589. [PubMed: 26554388]
94. Volkow ND, Fowler JS, Wang GJ, Swanson JM. Dopamine in drug abuse and addiction: results from imaging studies and treatment implications. *Mol. Psychiatry*. 2004; 9:557–569. [PubMed: 15098002]
95. Nader MA, et al. Social dominance in female monkeys: dopamine receptor function and cocaine reinforcement. *Biol. Psychiatry*. 2012; 72:414–421. [PubMed: 22503110]

96. Cahill L. Sex influences on brain and emotional memory: the burden of proof has shifted. *Prog. Brain Res.* 2010; 186:29–40. [PubMed: 21094884]
97. Nader MA, Czoty PW, Gould RW, Riddick NV. Review, Positron emission tomography imaging studies of dopamine receptors in primate models of addiction. *Phil. Trans. R. Soc. B.* 2008; 363:3223–3232. [PubMed: 18640923]
98. Eisenberger NI, Lieberman MD, Williams KD. Does rejection hurt? An fMRI study of social exclusion. *Science.* 2003; 302:290–292. [PubMed: 14551436]
99. Czoty PW, Nader MA. Effects of oral and intravenous administration of buspirone on food-cocaine choice in socially housed male cynomolgus monkeys. *Neuropsychopharmacology.* 2015; 40:1072–1083. [PubMed: 25393717]
100. Shaham Y, Shalev U, Lu L, De Wit H, Stewart J. The reinstatement model of drug relapse: history, methodology and major findings. *Psychopharmacology.* 2003; 168:3–20. [PubMed: 12402102]
101. Shaham Y, Erb S, Stewart J. Stress-induced relapse to heroin and cocaine seeking in rats: a review. *Brain Res. Brain Res. Rev.* 2000; 33:13–33. [PubMed: 10967352]
102. Jobs ML, et al. Clonidine blocks stress-induced craving in cocaine users. *Psychopharmacology.* 2011; 218:83–88. [PubMed: 21399902]
103. Kowalczyk WJ, et al. Clonidine maintenance prolongs opioid abstinence and decouples stress from craving in daily life: a randomized controlled trial with ecological momentary assessment. *Am. J. Psychiatry.* 2015; 172:760–767. [PubMed: 25783757]
104. Vendruscolo LF, et al. Corticosteroid-dependent plasticity mediates compulsive alcohol drinking in rats. *J. Neurosci.* 2012; 32:7563–7571. [PubMed: 22649234]
105. Vendruscolo LF, et al. Glucocorticoid receptor antagonism decreases alcohol seeking in alcohol-dependent individuals. *J. Clin. Invest.* 2015; 125:3193–3197. [PubMed: 26121746]
106. Grimm JW, Hope BT, Wise RA, Shaham Y. Neuroadaptation. Incubation of cocaine craving after withdrawal. *Nature.* 2001; 412:141–142. [PubMed: 11449260]
107. Bedi G, et al. Incubation of cue-induced cigarette craving during abstinence in human smokers. *Biol. Psychiatry.* 2011; 69:708–711. [PubMed: 20817135]
108. Caprioli D, et al. Ambience and drug choice: cocaine-and heroin-taking as a function of environmental context in humans and rats. *Biol. Psychiatry.* 2009; 65:893–899. [PubMed: 19217078]
109. Xue YX, et al. A memory retrieval-extinction procedure to prevent drug craving and relapse. *Science.* 2012; 336:241–245. [PubMed: 22499948]
110. Cunningham KA, Bradberry CW, Chang AS, Reith ME. The role of serotonin in the actions of psychostimulants: molecular and pharmacological analyses. *Behav. Brain Res.* 1996; 73:93–102. [PubMed: 8788484]
111. Schmitz JM, et al. Fluoxetine treatment of cocaine-dependent patients with major depressive disorder. *Drug Alcohol Depend.* 2001; 63:207–214. [PubMed: 11418225]
112. Robinson TE, Berridge KC. The neural basis of drug craving: an incentive-sensitization theory of addiction. *Brain Res. Rev.* 1993; 18:247–291. [PubMed: 8401595]
113. Bradberry CW. Cocaine sensitization and dopamine mediation of cue effects in rodents, monkeys, and humans: areas of agreement, disagreement, and implications for addiction. *Psychopharmacology.* 2007; 191:705–717. [PubMed: 17031707]
114. Anton RF, et al. A randomized, multicenter, double-blind, placebo-controlled study of the efficacy and safety of aripiprazole for the treatment of alcohol dependence. *J. Clin. Psychopharmacol.* 2008; 28:5–12. [PubMed: 18204334]
115. Tiihonen J, et al. A comparison of aripiprazole, methylphenidate, and placebo for amphetamine dependence. *Am. J. Psychiatry.* 2007; 164:160–162. [PubMed: 17202560]
116. Nutt DJ, Lingford-Hughes A, Erritzoe D, Stokes PR. The dopamine theory of addiction: 40 years of highs and lows. *Nat. Rev. Neurosci.* 2015; 16:305–312. [PubMed: 25873042]
117. Badiani A, Belin D, Epstein D, Calu D, Shaham Y. Opiate versus psychostimulant addiction: the differences do matter. *Nat. Rev. Neurosci.* 2011; 12:685–700. [PubMed: 21971065]

118. Thomas MJ, Kalivas PW, Shaham Y. Neuroplasticity in the mesolimbic dopamine system and cocaine addiction. *Br. J. Pharmacol.* 2008; 154:327–342. [PubMed: 18345022]
119. Wolf ME, Ferrario CR. AMPA receptor plasticity in the nucleus accumbens after repeated exposure to cocaine. *Neurosci. Biobehav. Rev.* 2010; 35:185–211. [PubMed: 20109488]
120. LaRowe SD, et al. A double-blind placebo-controlled trial of *N*-acetylcysteine in the treatment of cocaine dependence. *Am. J. Addict.* 2013; 22:443–452. [PubMed: 23952889]
121. Le AD, Harding S, Juzysch W, Fletcher PJ, Shaham Y. The role of corticotropin-releasing factor in the median raphe nucleus in relapse to alcohol. *J. Neurosci.* 2002; 22:7844–7849. [PubMed: 12223536]
122. Kwako LE, et al. The corticotropin releasing hormone-1 (CRH1) receptor antagonist pexacerfont in alcohol dependence: a randomized controlled experimental medicine study. *Neuropsychopharmacology.* 2015; 40:1053–1063. [PubMed: 25409596]
123. Schwandt, ML., et al. The CRF1 antagonist verucerfont in anxious alcohol dependent women: translation of neuroendocrine, but not of anti-craving effects. *Neuropsychopharmacology.* 2016. <http://dx.doi.org/10.1038/npp.2016.61>
124. Coric V, et al. Multicenter, randomized, double-blind, active comparator and placebo-controlled trial of a corticotropin-releasing factor receptor-1 antagonist in generalized anxiety disorder. *Depress. Anxiety.* 2010; 27:417–425. [PubMed: 20455246]
125. Binneman B, et al. A 6-week randomized, placebo-controlled trial of CP-316,311 (a selective CRH<sub>1</sub> antagonist) in the treatment of major depression. *Am. J. Psychiatry.* 2008; 165:617–620. [PubMed: 18413705]
126. Grillon C, et al. The CRH<sub>1</sub> antagonist GSK561679 increases human fear but not anxiety as assessed by startle. *Neuropsychopharmacology.* 2015; 40:1064–1071. [PubMed: 25430779]
127. Maurage P, et al. Disrupted regulation of social exclusion in alcohol-dependence: an fMRI study. *Neuropsychopharmacology.* 2012; 37:2067–2075. [PubMed: 22510722]

**Box 1****Translational studies in addiction**

Some data are available to support postdictive validity of commonly used animal models in addiction. For instance, several medications that have established clinical efficacy in addiction have been found to decrease drug seeking in the reinstatement model, an animal model of drug relapse and craving<sup>100</sup>. These include naltrexone and acamprosate for alcoholism, methadone and buprenorphine for opiate addiction, and varenicline for nicotine addiction<sup>6,10</sup>.

There are also some recent indications for the potential predictive validity of animal models. For example, the  $\alpha$ 2-adrenergic agonist clonidine decreased stress-induced reinstatement of heroin and cocaine seeking in rats<sup>101</sup>. These observations led to human studies showing that clonidine decreased stress-induced cocaine craving in a human laboratory setting<sup>102</sup> and also modestly decreased heroin lapse in a clinical trial<sup>103</sup>. Similarly, the observation that the glucocorticoid receptor antagonist mifepristone decreased alcohol dependence-induced increases in alcohol intake in rats<sup>104</sup> led to a clinical study showing that the antagonist decreased both cue-induced alcohol craving and alcohol intake in alcohol-addicted patients<sup>105</sup>. There is also evidence that an unexpected behavioural phenomenon identified in a rat model — time-dependent increases in cue-induced drug seeking after withdrawal, termed ‘incubation’ of drug craving<sup>106</sup> — generalizes to human addiction<sup>107</sup>. Recent data also suggest that rats given access to both heroin and cocaine express a preference for intravenous heroin in the home environment and cocaine outside the home environment, and this observation prospectively generalized to human drug users<sup>108</sup>. Finally, exposure to the memory retrieval-extinction procedure decreased conditioned drug effects and drug seeking in rat models of relapse, as well as drug craving in abstinent heroin users<sup>109</sup>.

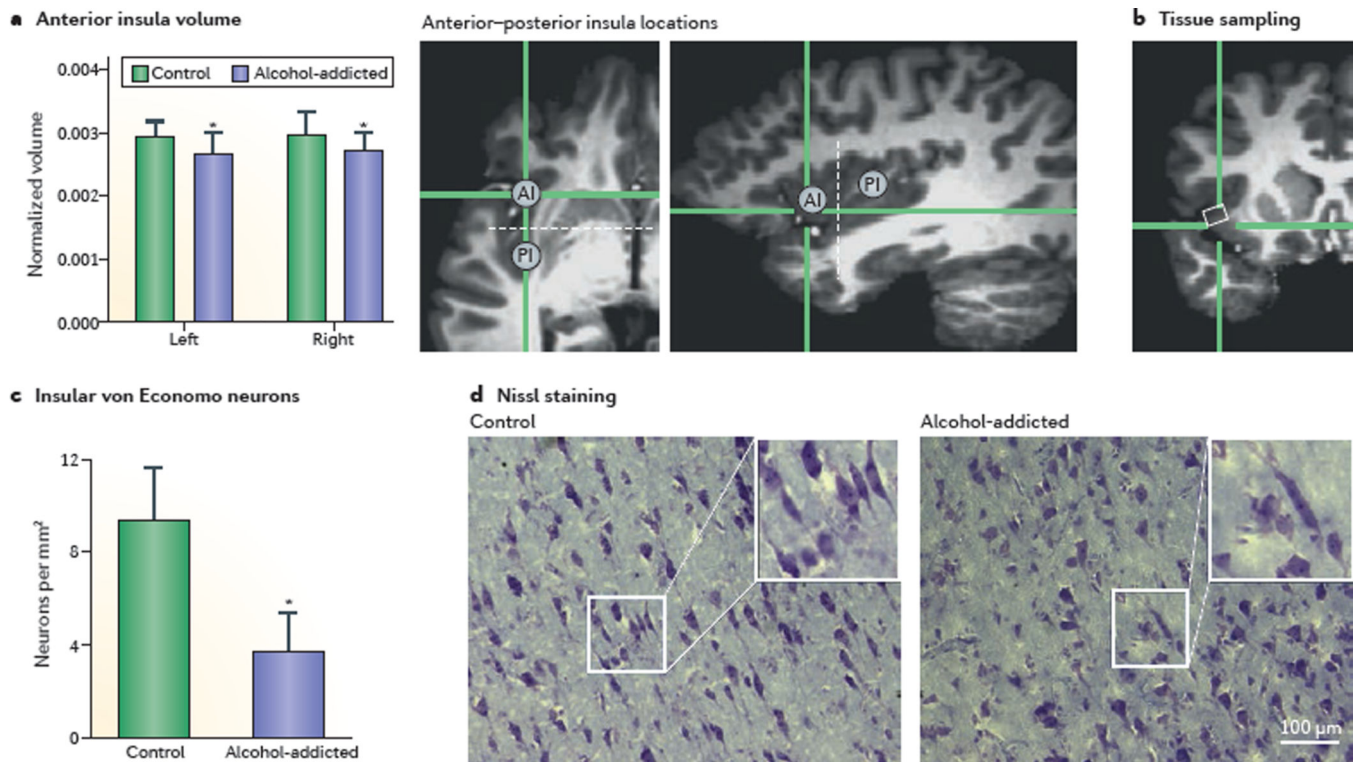
However, these recent ‘translational’ advances, as well as numerous other preclinical studies aimed at identifying novel treatments of addiction, are yet to result in any US Food and Drug Administration (FDA)-approved pharmacotherapies for addiction. The ‘positive’ translational advances mentioned above are also the exception rather than the rule in the addiction field; drug targets identified in animal models<sup>110</sup> often do not translate to successful clinical trials<sup>111</sup>. Most notably, since the 1970s<sup>65</sup>, neurobiological addiction research and theory have concentrated on the role of dopamine transmission within the mesocorticolimbic dopamine reward system<sup>5,112,113</sup>. This line of research seemed to point to targets for rational, mechanistically based addiction therapies. However, pharmacological interventions targeting the mesocorticolimbic dopamine system have so far yielded disappointing results in clinical trials<sup>114,115</sup>. These results and other evidence from human studies have led some to question the prevailing dogma that dopamine has a critical role in addiction across drug classes<sup>116,117</sup>.

More recently, the focus in preclinical addiction research shifted to the role of drug-induced alterations in glutamate transmission within the mesocorticolimbic dopamine system in drug craving and relapse<sup>118,119</sup>. However, results from a recent translational, double-blind, placebo-controlled study using *N*-acetylcysteine — a drug that normalizes



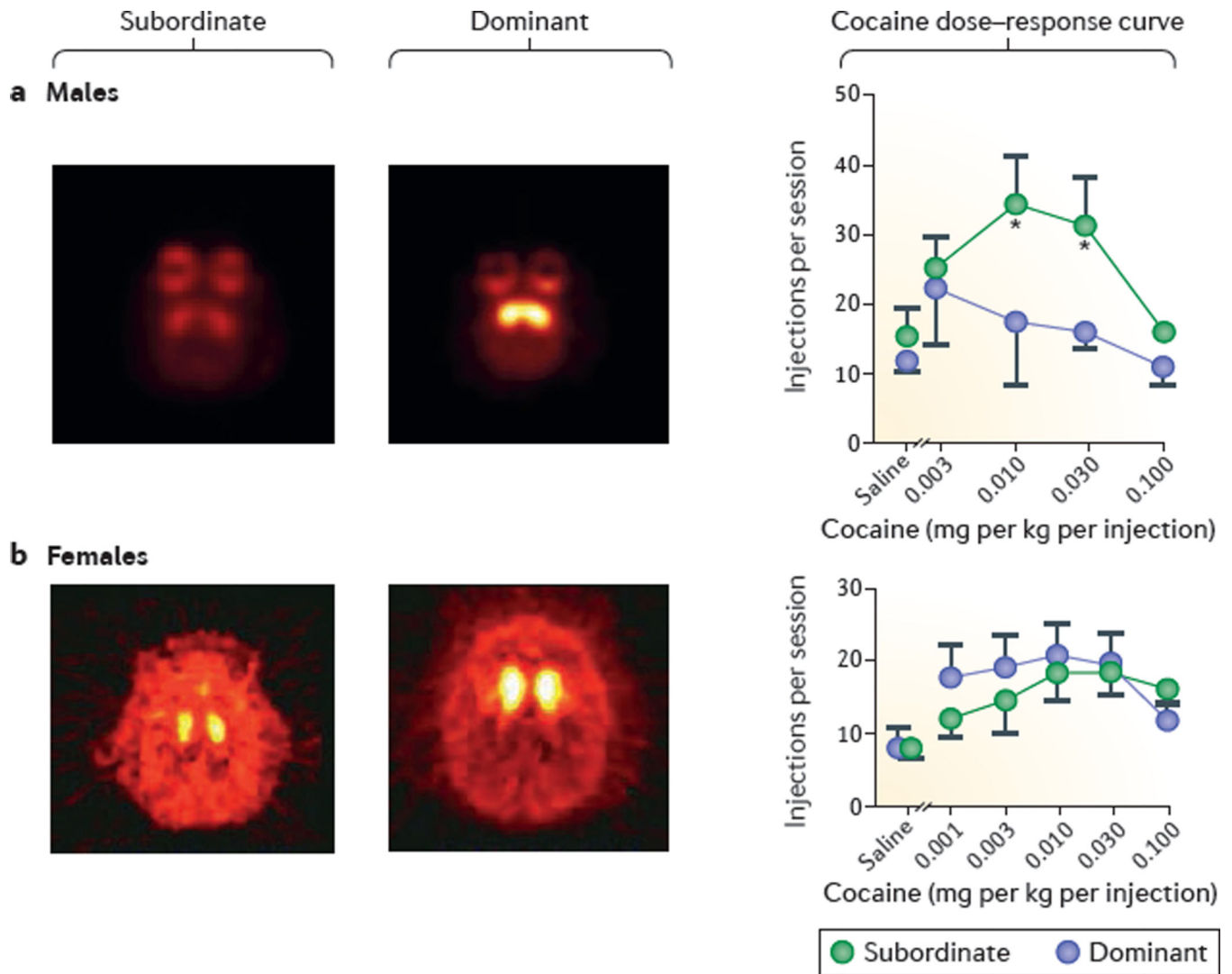
cocaine-induced changes in glutamatergic transmission in the nucleus accumbens and decreases relapse and reinstatement of drug seeking in many preclinical studies<sup>4</sup> — were negative<sup>120</sup>.

Similarly, based on rodent studies on the effects of corticotropin-releasing factor receptor 1 (CRFR1) antagonists on dependence-induced alcohol intake, alcohol-withdrawal symptoms and stress-induced reinstatement of alcohol seeking<sup>2,121</sup>, blockade of this receptor was thought to hold great promise as an anti-stress mechanism for alcoholism treatment<sup>2,11,19,41,121</sup>. However, when it recently became possible to evaluate this mechanism clinically, CRFR1 blockade was shown to be ineffective against stress-induced craving in human alcoholics, despite painstaking efforts to ensure target engagement<sup>122,123</sup>. These negative results probably represent a ‘mechanism failure’ rather than a ‘molecule failure’, as several CRFR1 antagonists also failed in development for other stress-related psychiatric disorders in which they had strong preclinical validation<sup>124,125</sup> or have in fact been found to exacerbate rather than attenuate fear responses in healthy human subjects<sup>126</sup>.



### Figure 1. Structural changes in the insula in alcoholics

Reduced anterior insula (AI) volumes (measured by structural MRI after 3–4 weeks of abstinence) and a pronounced, selective loss of von Economo neurons (measured by histological analysis in post-mortem brains) are observed in alcohol-addicted individuals compared with healthy volunteers (controls). **a** | Whole-brain normalized volumes (mean  $\pm$  s.e.m.) of the left and right AI in alcohol-addicted and healthy individuals. The two magnetic resonance (MR) images on the right of the panel show, in two different planes, the location of the measured AI. Dashed white lines indicate a coronal plane through the anterior commissure with  $y = 0$ , which represents the estimated border between the AI and posterior insular (PI) divisions. **b** | An MR image depicting the region (white rectangle) sampled in post-mortem analyses in panel **c** and panel **d**. **c** | Quantitative analysis showing a reduction in the number of von Economo neurons in alcohol-addicted patients compared with healthy controls (mean  $\pm$  s.e.m.). **d** | In contrast to the number of von Economo neurons, counts of all (Nissl-stained) neurons in the AI did not differ between groups. \*Different from controls;  $P < 0.05$ . Adapted from REF. 28, Senatorov, V. V. *et al.* Reduced anterior insula, enlarged amygdala in alcoholism and associated depleted von Economo neurons. *Brain* 2015 **138** (1): 69–79, by permission of Oxford University Press.



**Figure 2. Sex differences in the effects of social hierarchy on cocaine self-administration in non-human primates**

**a** | Effects of social hierarchy on the striatal availability of dopamine D2/3 receptors (D2/3Rs) and on cocaine self-administration in socially housed male cynomolgus monkeys. Positron emission tomography (PET) images (transverse plane) were obtained with the D2/3R-imaging agent [ $^{18}\text{F}$ ]fluorocleobopride, and cocaine self-administration was maintained under a schedule of reinforcement in which every 30 lever presses led to the delivery of cocaine infusion (fixed-ratio 30). Subordinate males have lower D2/3R availability and show higher rates of cocaine self-administration than do dominant males, as observed in the dose-response curves. Brighter and lighter colours in the scan images on the left represent increased binding of [ $^{18}\text{F}$ ]fluorocleobopride, suggesting higher D2/3R availability. **b** | In a separate experiment, it was shown that social hierarchy resulted in social-rank-related differences in D2/3R availability (as assessed using PET) but did not affect maintenance of cocaine self-administration in female cynomolgus monkeys, with similar levels of self-administration being observed in subordinate and dominant monkeys (see dose-response curves; the number of infusions per session in the females was limited

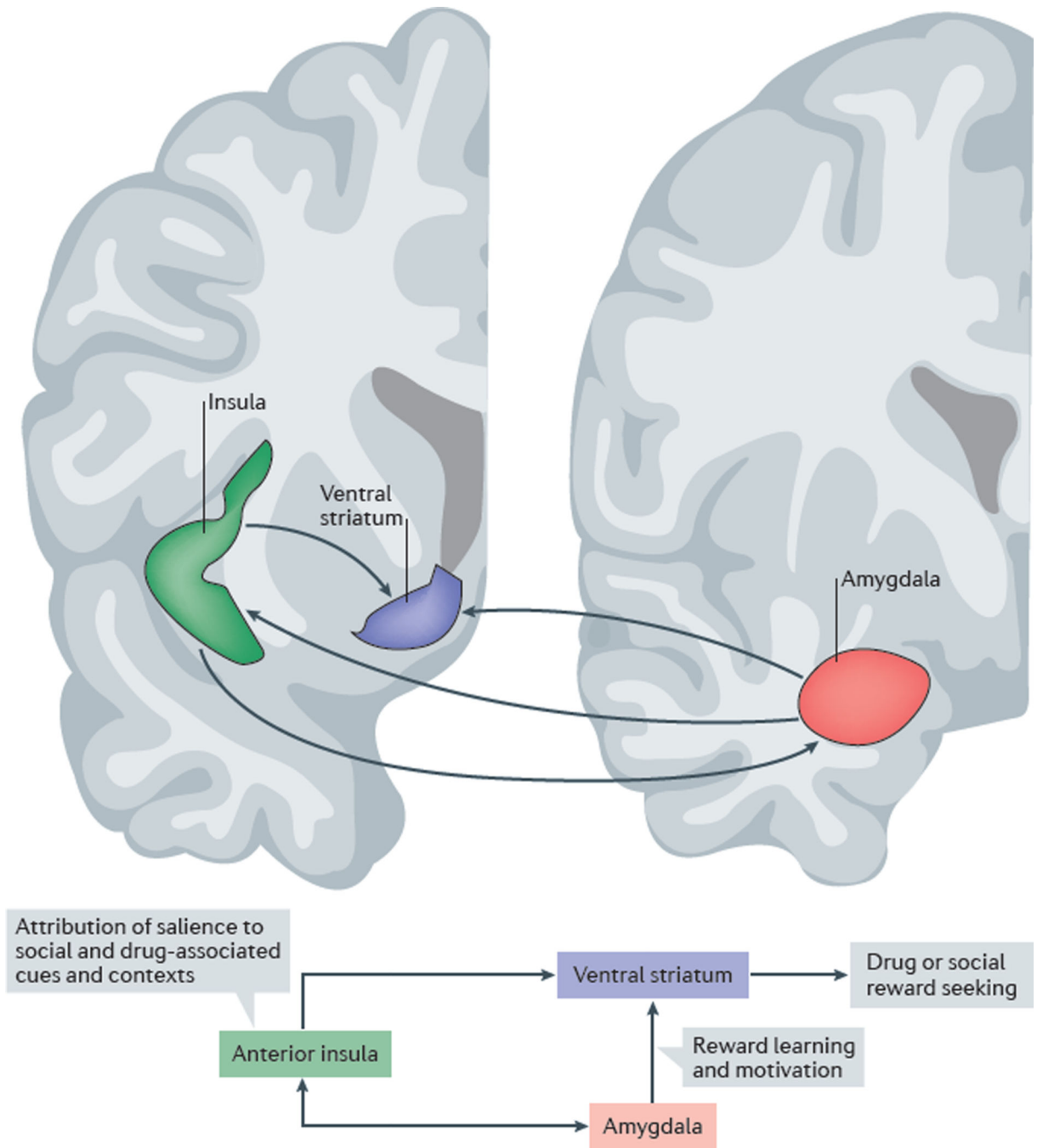
to 30). Data are depicted as mean  $\pm$  s.e.m. Panel **a** is adapted from REF. 34, Nature Publishing Group. Panel **b** is adapted with permission from REF. 95, Elsevier.

Author Manuscript

Author Manuscript

Author Manuscript

Author Manuscript



**Figure 3. Schematic representation of hypothesized core circuitry linking social exclusion to drug seeking**

Drug seeking is a complex behaviour, and multiple circuits are likely to have a role in the ability of social and drug-associated cues and contexts to gain access to the affective and motivational processes involved in addiction. The insula and its afferent and efferent projections play a key part in integrating the motivational relevance of salient interoceptive and visceromotor stimuli and executing appropriate (adaptive) behaviours based on this integration<sup>33</sup>. A network including the insula seems to be involved in responses to social exclusion<sup>22,24</sup>. Established connections among the anterior insula, the amygdala complex

and the ventral striatum suggest that these structures form an important circuit in linking social exclusion to drug seeking. The anterior insula (green), a key element of the so-called social pain matrix, is closely interconnected with the amygdala (red) and the ventral striatum (purple)<sup>33,37,39,40</sup>. We propose that these connections form a network that is important for linking social stimuli to the affective and motivational aspects of drug seeking and drug taking. In the early stages of addiction, activity of the anterior insula that is induced by social exclusion may directly promote drug craving. Overtime, drug-induced changes in insula function are hypothesized to result in an impaired ability to appropriately attribute salience to social versus drug-related cues and contexts<sup>24,28,32,127</sup>. Figure is adapted from an image provided courtesy of S. N. Haber, University of Rochester, New York, USA.