

# SCIENTIFIC REPORTS



OPEN

## A cell-based, quantitative and isoform-specific assay for exchange proteins directly activated by cAMP

Yingmin Zhu, Fang Mei, Pei Luo & Xiaodong Cheng 

Extensive functional studies of the exchange protein directly activated by cAMP (EPAC) family of signaling molecules have demonstrated that EPAC proteins play a fundamental role in several physiological and pathophysiological responses, therefore are attractive drug targets. In this report, the development of a cell-based, medium to high throughput screening assay that is capable of monitoring EPAC-mediated activation of cellular Rap1 in an isoform-specific manner is described. This assay adapts a conventional ELISA format with immobilized RalGDS-RBD as a bait to selectively capture GTP-bound active Rap1. As a result, it fills an urgent need for a cell-based EPAC assay that can be conveniently performed using microtiter plates for the discovery and/or validation of isoform-specific EPAC agonists and antagonists.

Exchange proteins directly activated by cAMP (EPAC1 and EPAC2) mediate the intracellular functions of cAMP by acting as guanine nucleotide exchange factors for the Ras-like small GTPases, Rap1 and Rap2<sup>1, 2</sup>. Extensive studies have demonstrated that EPAC proteins are important signaling molecules involved in modulating a myriad of physiological functions<sup>3-5</sup>, ranging from energy homeostasis<sup>6-8</sup> and insulin secretion<sup>9, 10</sup> to learning and memory<sup>11, 12</sup>. In addition, EPAC proteins have also been shown to act as major stress-response mediators and play key roles in the development of human diseases, such as cancer<sup>13-16</sup>, chronic pain<sup>17-19</sup>, cardiovascular diseases<sup>20, 21</sup> and infection<sup>22, 23</sup>. Therefore, developing small molecule EPAC-specific modulators has evolved into an active area of research within the field for the last few years<sup>24-26</sup>. Several recent studies have reported the effective development of EPAC-specific antagonists using high throughput screening (HTS) biochemical assays<sup>27-29</sup>. However, a robust cell-based assay equipped to measure the activity of EPAC proteins in a medium to high throughput setup is lacking. In this study, the design and execution of an isoform specific cell-based assay capable of measuring cellular activity of EPAC proteins in a microplate format are described.

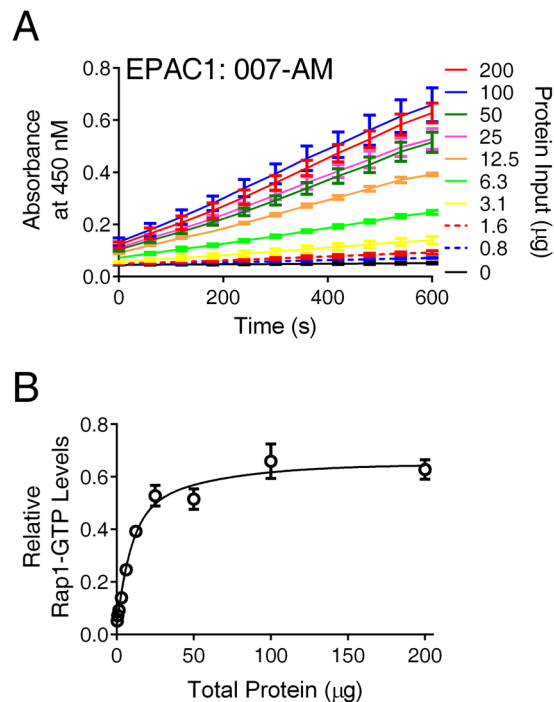
### Results

**Assay design.** To develop a cell-based, isoform-specific EPAC activation assay, HEK293 cell lines stably expressing Flag-tagged Rap1A and full-length EPAC1 or EPAC2 are proposed. HEK293 cells express minimal endogenous levels of EPAC1 and EPAC2 and have been used as host cells for evaluating the cellular activities of ectopically expressed EPAC proteins in an isoform-specific manner<sup>28</sup>. Activation of EPAC1 or EPAC2 in these cell lines by cAMP elevating agents leads to the accumulation of Flag-Rap1-GTP, which can be captured by RalGDS-RBD immobilized in a nickel-coated 96-well microplate. The levels of active Flag-Rap1-GTP protein can be quantitatively monitored using a specific anti-FLAG antibody and a HRP conjugated secondary antibody in a manner similar to that of a conventional ELISA assay (Fig. 1).

**Assay optimization.** Ectopic expression of EPAC and Rap1 proteins could lead to elevated basal Rap-GTP levels, which would decrease signal-to-noise ratio and dynamic range of our proposed assay. To optimize the assay, individual stable clones of HEK293/hEPAC1/Flag-Rap1 or HEK293/mEPAC2/Flag-Rap1 were first established and tested for their basal Rap1-GTP activities. Overall, HEK293/mEPAC2/Flag-Rap1 cells had higher basal Rap1-GTP activities than their hEPAC1 counterparts, and the basal activities varied within a range of 3-fold among different stable clones. Stable clones with lowest basal activity for HEK293/hEPAC1/Flag-Rap1 or HEK293/mEPAC2/Flag-Rap1 were selected, expanded and used for subsequent studies. After

Department of Integrative Biology and Pharmacology, Texas Therapeutics Institute, University of Health Science Center, Houston, Texas, USA. Correspondence and requests for materials should be addressed to X.C. (email: [xiaodong.cheng@uth.tmc.edu](mailto:xiaodong.cheng@uth.tmc.edu))





**Figure 2.** Relative signals of EPAC1-mediated Rap1 cellular activation as function of amount of lysate proteins. **(A)** Time course of EPAC1-mediated Rap1 activation in response to 1  $\mu\text{M}$  of 007-AM measured using various amount lysate protein inputs (0–200  $\mu\text{g}$ ). **(B)** Relative measured Rap1-GTP levels as a function of added lysate proteins. Data are presented as Means  $\pm$  SD,  $n = 2$ .

class of EPAC inhibitors is low and the compound may form aggregates at higher concentrations<sup>34</sup>. In fact, a decreased recovery of total lysate proteins was observed when cells were treated with higher concentrations of NY-0123.

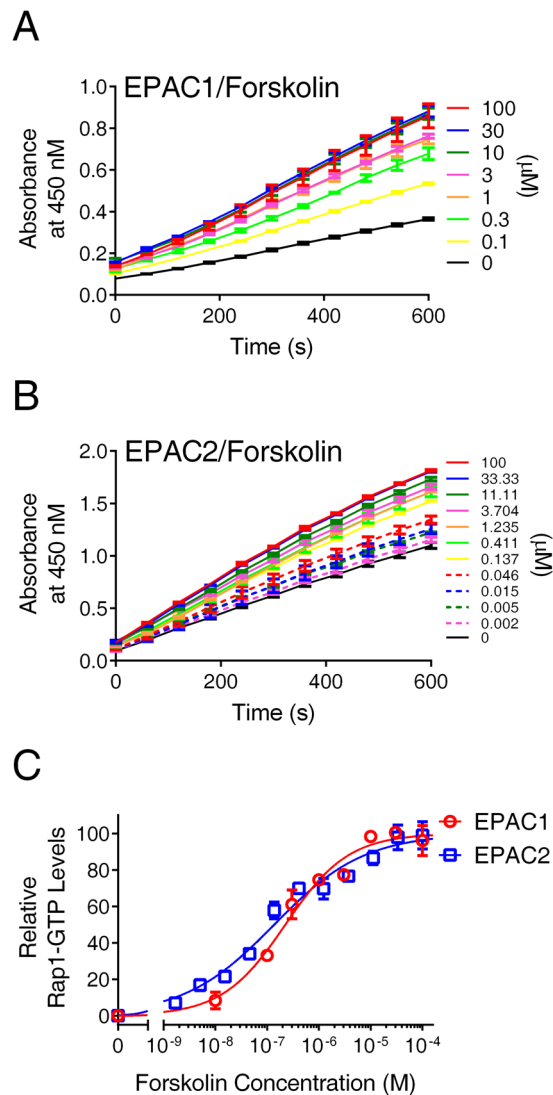
To ascertain the isoform-specific capability of our cell-based EPAC activity assay, the effect of an EPAC2-specific inhibitor, ESI-05, on forskolin-mediated cellular EPAC1 and EPAC2 activation was evaluated. ESI-05 selectively inhibited EPAC2, but not EPAC1, with sub-micromolar potency in the presence of 20  $\mu\text{M}$  cAMP<sup>28,35</sup>. While pretreatment of HEK293/mEPAC2/Flag-Rap1 cells with ESI-05 dose-dependently inhibited cellular EPAC2 activities stimulated by 1  $\mu\text{M}$  forskolin (Fig. 6A) with an apparent  $\text{IC}_{50}$  value of  $621 \pm 154$  nM (Fig. 6C), ESI-05 had no detectable activity in inhibiting cellular EPAC1 activation stimulated by 1  $\mu\text{M}$  Forskolin (Fig. 6B). These data not only further confirm that ESI-05 truly is selective for EPAC2 but also validate that our assay indeed allows isoform-specific measurement of cellular EPAC1 and EPAC2 activities.

During the course of the studies, it was observed that ESI-05, at high concentrations, is capable of suppressing cellular EPAC activity to a level significantly below the basal activity, suggesting that ESI-05 may act as an apparent inverse agonist for EPAC2. To test this hypothesis, a new series of experiments monitoring the basal activity of HEK293/mEPAC2/Flag-Rap1 cells as a function of ESI-05 were performed. As shown in Fig. 7, ESI-05 does-dependent inhibited basal EPAC2 activity with an  $\text{IC}_{50}$  value of  $1.2 \pm 0.4$   $\mu\text{M}$ .

## Discussion

Extensive researches have demonstrated that the EPAC proteins play key roles in various physiological and pathophysiological functions and are attractive drug targets<sup>3,21,25</sup>. The development of a cell-based assay for the discovery of EPAC-specific modulators has become an important area of research. Conventionally, EPAC cellular activity is assayed by monitoring relative cellular Rap-GTP levels using affinity pull-down with purified recombinant GST-RalGDS-RBD, which preferentially binds Rap-GTP over Rap-GDP with approximate 4,000-fold selectivity<sup>32</sup>. The levels of Rap-GTP from the affinity pull-down are further evaluated using immunoblotting analysis. This approach is laborious, time-consuming, costly, and involves a multi-step procedure prone to operational errors. Furthermore, Western blot analysis is difficult to quantify and not suitable for medium to high throughput experiments. To overcome these obstacles, a cell-based EPAC assay that enables the detection and quantification of EPAC-mediated cellular Rap1 activation under the microplate format has been designed, developed and optimized. In this assay, the immobilization of the purified His<sub>6</sub>-tagged RalGDS-RBD in the nickel-coated well of a 96-well plate allows convenient capture of active Rap1-GTP from the cell lysate, which can be easily monitored and quantified by enzyme-linked immunosorbent detection using a microplate reader.

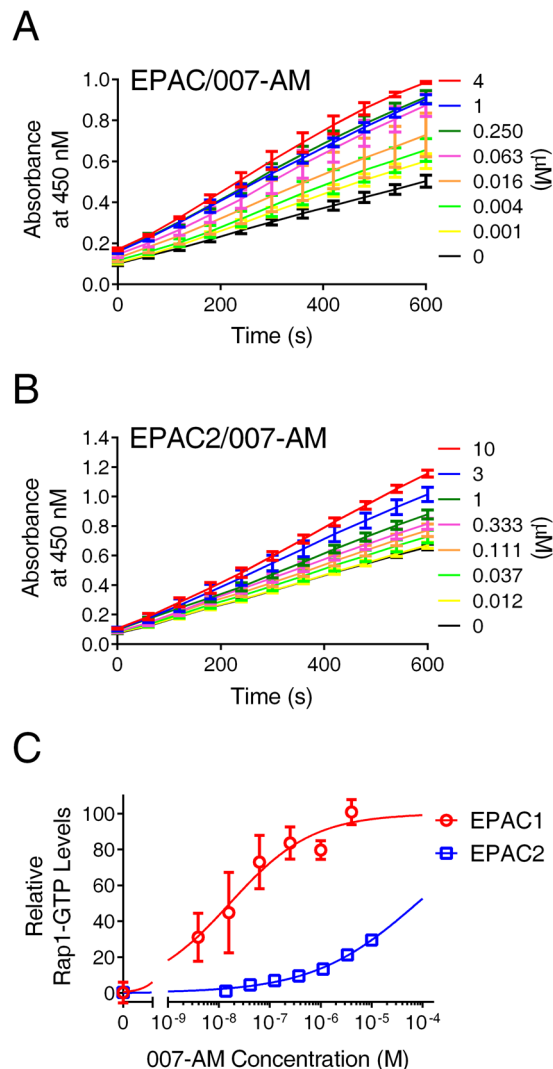
With proper optimizations, our assay is capable of quantitatively detecting cellular EPAC activation in response to various stimuli as well as inhibitors in a dose-dependent and isoform-specific manner. This new



**Figure 3.** Dose-dependent cellular activation of EPAC1 and EPAC2 by forskolin. **(A)** Time course of EPAC1-mediated Rap1 activation in response to forskolin stimulation. **(B)** Time course of EPAC2-mediated Rap1 activation in response to forskolin stimulation. **(C)** Relative Rap1-GTP levels as a function of forskolin concentration in HEK293 cells overexpressing EPAC1 or EPAC2, respectively. Data are presented as Means  $\pm$  SD,  $n = 2$ .

assay has several clear advantages over other existing cell-based EPAC assays. Compared to the traditional bead-based Rap-GTP pull-down assay, the immobilized RaIGDS-RBD bait in microplate enables assay miniaturization and automation. In fact, the assay can be performed in parallel for a large number of samples, each with as little as a few micrograms of total lysates. Moreover, it offers more reproducible and consistent capture of the Rap-GTP protein in the lysate and allows more convenient and reliable signal detection and quantification. By adapting a microplate format, our assay eliminates the need of centrifugation washing steps and immune-blotting based detection. Hence, the entire assay can be performed within hours, instead of days. Another alternative cellular EPAC assay utilizes EPAC-based fluorescence resonance energy transfer (FRET) or bioluminescence resonance energy transfer (BRET) sensors. These genetically engineered sensors can be ectopically expressed in various cells for the detection of generation of intracellular cAMP in live cells in a spatial and temporal manner<sup>36–38</sup>. While cells stably expressing these biosensors can be adapted for microplate format assays, the signal-to-noise and dynamic range of these biosensors are normally poor and not adequate for HTS. Importantly, positive FRET or BRET signals driven by conformational changes of EPAC proteins do not always correlate with EPAC activation or inhibition, and conversely allosteric modulators of EPAC may not necessarily induce conformational changes that affect FRET/BRET-based readout. These drawbacks limit the general applicability of using EPAC-based biosensors for functional cell-based EPAC assays.

During the development of the assay, it became apparent that ectopic expression of EPAC and Rap1 raised the basal level of active Rap1, which decreased signal-to-noise ratio and dynamic range of the assay. In particular,

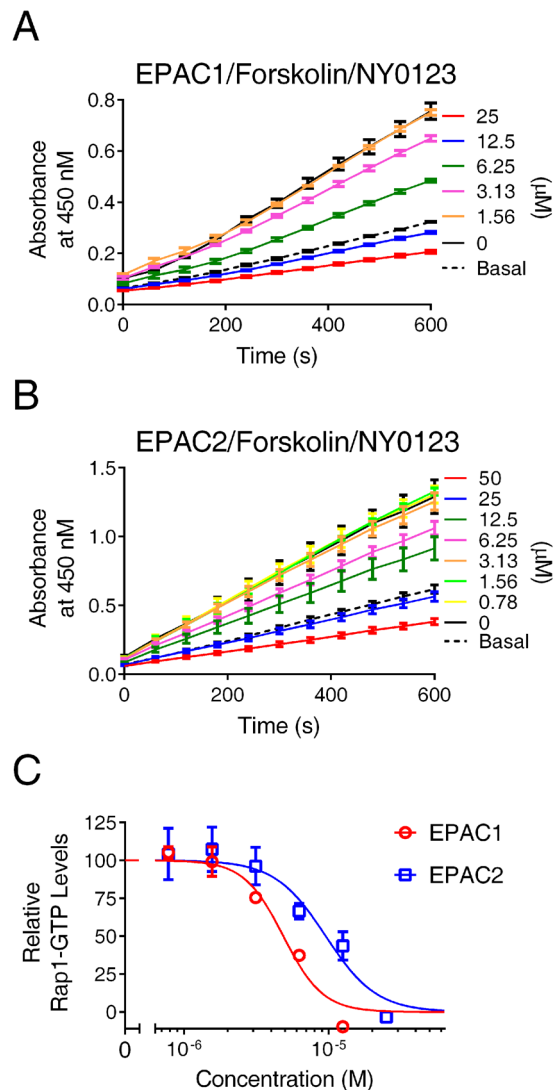


**Figure 4.** Dose-dependent cellular activation of EPAC1 and EPAC2 by 007-AM. (A) Time course of EPAC1-mediated Rap1 activation in response to 007-AM stimulation. (B) Time course of EPAC2-mediated Rap1 activation in response to 007-AM stimulation. (C) Relative Rap1-GTP levels as a function of 007-AM concentration in HEK293 cells overexpressing EPAC1 or EPAC2, respectively. Data are presented as Means  $\pm$  SD,  $n = 3$ .

HEK293/mEPAC2/Flag-Rap1 cells had higher baselines of active Rap1-GTP as compared those of HEK293/hEPAC/Flag-Rap1 cells. This is most likely due to the fact that EPAC2 protein has a more than three-fold higher affinity for cAMP than EPAC1 protein. Through careful selection of cell clones with low levels EPAC and Rap1 expression, suitable signal-to-noise ratio and dynamic range could be achieved. Ultimately, the use of an inducible expression system or genomic knock-in may provide a better solution of solving the aforementioned high basal activity problem. Another alternative is to use the endogenously expressed Rap1 protein as the readout, however, the absence of highly specific and sensitive Rap1 antibodies prevents its execution as currently available anti-Rap1 antibodies lack appropriate specificity and sensitivity for monitoring endogenous Rap1 activation using the microplate format.

While the assay described in this study is specifically designed for Rap regulators EPAC1 and EPAC2, Rap small GTPases have multiple regulators, including C3G, PDZ-GEF1 and 2, CalDAG-GEF1, Dock4 and RapGAPs<sup>39</sup>. In theory, depending upon their cellular expression, these Rap modulators may interfere with the assay. However, considering that the design of the assay involves ectopic expression of EPAC proteins and their selective activation using cAMP stimulating agents, the possibility of interference by these non-EPAC Rap modulators should be minimal and negligible.

In summary, a sensitive cell-based EPAC activity assay that can be monitored using a microplate reader has been established. This assay can be performed to screen and/or validate EPAC isoform-specific agonists or antagonists in medium to high throughput formats, therefore, represents a useful tool for the discovery EPAC-based pharmacological probes.



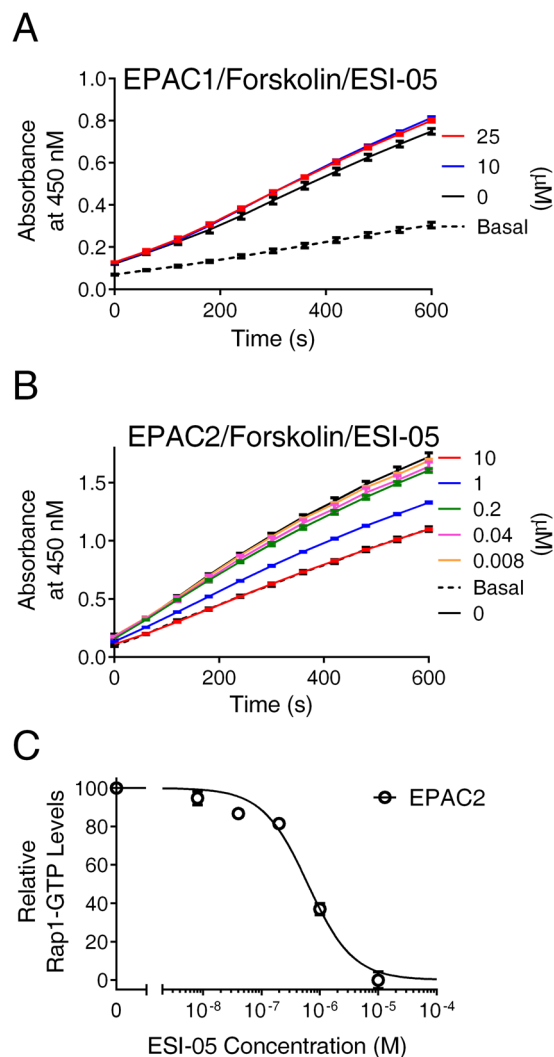
**Figure 5.** Dose-dependent inhibition of forskolin-induced cellular EPAC1 and EPAC2 activation by NY-0123. (A) Time course of EPAC1-mediated Rap1 activation induced by  $1\ \mu\text{M}$  Forskolin in the presence of various concentrations of NY-0123. (B) Time course of EPAC2-mediated Rap1 activation induced by  $1\ \mu\text{M}$  Forskolin in the presence of various concentrations of NY-0123. (C) Relative Rap1-GTP levels induced by  $1\ \mu\text{M}$  forskolin as a function of NY-0123 concentration in HEK293 cells overexpressing EPAC1 or EPAC2, respectively. Data are presented as Means  $\pm$  SD,  $n = 3$ .

## Material and Method

**Reagents.** Tween-20, IGEPAL CA-630 (molecular biology grade), o-phenylenediamine dihydrochloride (OPD) tablets (#P3804), MEM medium (#M4655) and anti-FLAG M2 monoclonal antibody (#F1804) were purchased from Sigma. Protein inhibitor cocktail tablets, EDTA free (#88666), Nickel Coated Plates, Clear, 8-Well Strip (#15142) were obtained from Thermo Scientific. DC protein assay kit (#5000112) and Goat Anti-Mouse IgG HRP-Conjugated (#170-6516) were from Bio-Rad. Thrombin (#27084601), Glutathione Sepharose 4B resin (#17075605) and HiLoad Superdex 200 16/600 column (#28989335) were the products from GE Healthcare. All other chemicals were reagent grades.

**Recombinant Protein expression and purification.** N-terminal GST-tagged and C-terminal His<sub>6</sub>-tagged wild-type rat Rap binding domain (RBD, aa 726–823) of Ral GDS protein (GST-RalGDS-RBD-His<sub>6</sub>) and its inactive triple-alanine mutant (R784A, K796A and K805A)<sup>30</sup> were constructed in the pGEX-2T vector. GST-RalGDS-RBD-His<sub>6</sub> proteins were expressed in *E. coli* BL21 (DE3) and isolated using the Glutathione Sepharose 4B resin with a standard GST-fusion protein purification protocol in a buffer containing 20 mM Tris-HCl, 150 mM NaCl, pH 7.4. Thrombin-cleaved RalGDS-RBD-His<sub>6</sub> proteins were further purified using a HiLoad Superdex 200 16/600 size exclusion column, which was connected to a Bio-Rad NGC chromatography system.

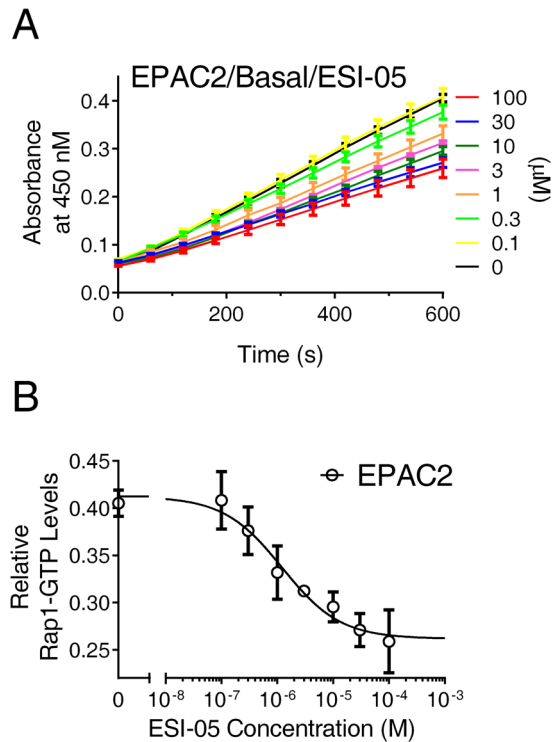




**Figure 6.** Dose-dependent inhibition of forskolin-induced cellular EPAC1 and EPAC2 activation by ESI-05. **(A)** Time course of EPAC1-mediated Rap1 activation induced by 1  $\mu\text{M}$  forskolin in the presence of various concentrations of ESI-05. **(B)** Time course of EPAC2-mediated Rap1 activation induced by 1  $\mu\text{M}$  forskolin in the presence of various concentrations of ESI-05. **(C)** Relative Rap1-GTP levels induced by 1  $\mu\text{M}$  forskolin as a function of ESI-05 concentration in HEK293 cells overexpressing EPAC2. Data are presented as Means  $\pm$  SD,  $n = 2$ .

**Cell lines.** HEK293 (ATCC) cells were grown in MEM medium supplemented with 10% heat-inactivated FBS (Invitrogen), at 37  $^{\circ}\text{C}$ , 5%  $\text{CO}_2$ . HEK293 stable cell lines expressing Flag-tagged human Rap1A (Flag-hRap1A) alone and co-expressing human EPAC1 (hEPAC1) and Flag-hRap1A or mouse EPAC2 (mEPAC2) and Flag-hRap1A were established by sequential transfections using Lipofectamine 2000 reagent (Invitrogen) with mammalian expression vectors, first with pIRES2-EGFP containing Flag-hRap1A and followed by pIRES-hyg2 containing hEPAC1 or mEPAC2. Individual stable cell clones were selected and maintained in MEM containing 500  $\mu\text{g}/\text{ml}$  G418 for pIRES2-EGFP and 100  $\mu\text{g}/\text{ml}$  hygromycin B for pIRES-hyg2, respectively.

**Cellular Rap1 assay.** HEK293 cells co-expressing hEPAC1/Flag-tagged hRap1A or mEPAC2/Flag-tagged hRap1A were seeded in 12-well plates (Corning #3513) at an initial confluency of 400,000 cell/well and incubated at 37  $^{\circ}\text{C}$ , 5%  $\text{CO}_2$ , in MEM medium with 10% FBS, for 24 hours. Cells were then rinsed with HBSS and cultured in FBS-free MEM medium for another 16 hours. If necessary cells were first pretreated with various concentration of antagonists or vehicle at 37  $^{\circ}\text{C}$  for 30 min. Otherwise, the cells were stimulated with various concentrations of agonists or vehicle controls at 37  $^{\circ}\text{C}$  for 10 min, then immediately rinsed with ice-cold PBS and lysed in 500  $\mu\text{l}$  ice-cold lysis buffer containing 20 mM Tris-HCl, pH 7.4, 150 mM NaCl, 10 mM  $\text{MgCl}_2$ , 1% IGEPAL CA-630 and proteinase inhibitors cocktail. Cell extracts were clarified by centrifugation at 18,000 RCF for 20 min and their protein concentrations were determined by DC protein assay kit. 100  $\mu\text{l}$  of properly diluted cell lysates containing 0 to 50  $\mu\text{g}$  total proteins were added to nickel coated 96-well plate strips that were pre-coated with 200  $\mu\text{g}$  of RalGDS-RBD-His<sub>6</sub> proteins and incubated at 4  $^{\circ}\text{C}$  for 2 hours with gentle rocking. After washing with



**Figure 7.** Dose-dependent inhibition of basal EPAC2 activation by ESI-05. **(A)** Time course of EPAC2-mediated basal Rap1 activation in the presence of various concentrations of ESI-05. **(B)** Relative basal Rap1-GTP levels as a function of ESI-05 concentration in HEK293 cells overexpressing EPAC2. Data are presented as Means  $\pm$  SD, n = 3.

100  $\mu$ l ice-cold ELISA buffer (20 mM Tris-HCl, pH 7.4, 150 mM NaCl, 10 mM MgCl<sub>2</sub> and 0.1% Tween-20) for 3 times, 100  $\mu$ l mouse anti-Flag antibody (1:5000 in ELISA buffer) was added into each well and incubated at 4°C for 1 hour with gentle shaking. Following three washes with 100  $\mu$ l ice-cold ELISA buffer, 100  $\mu$ l anti-mouse HRP-conjugated antibodies (1:3000 in ELISA buffer) were added into each well. After incubation at room temperature for 1 hour with gentle shaking, the wells were washed three times with 100  $\mu$ l ELISA buffer. 200  $\mu$ l of OPD substrate was added into each well and absorbance signal at 450 nm was monitored using an M2 microplate reader (Molecular Devices) for 30 min with 1-min intervals. 10-min data points were used for quantification.

**Data availability statement.** All data generated or analyzed during this study are included in this published article and its Supplementary Information file.

## References

- de Rooij, J. *et al.* Epac is a Rap1 guanine-nucleotide-exchange factor directly activated by cyclic AMP. *Nature* **396**, 474–477 (1998).
- Kawasaki, H. *et al.* A family of cAMP-binding proteins that directly activate Rap1. *Science* **282**, 2275–2279 (1998).
- Schmidt, M., Dekker, F. J. & Maarsingh, H. Exchange protein directly activated by cAMP (epac): a multidomain cAMP mediator in the regulation of diverse biological functions. *Pharmacol Rev* **65**, 670–709 (2013).
- Banerjee, U. & Cheng, X. Exchange protein directly activated by cAMP encoded by the mammalian rapgef3 gene: Structure, function and therapeutics. *Gene* **570**, 157–167 (2015).
- Sugawara, K., Shibasaki, T., Takahashi, H. & Seino, S. Structure and functional roles of Epac2 (Rapgef4). *Gene* **575**, 577–583 (2016).
- Almahariq, M., Mei, F. C. & Cheng, X. Cyclic AMP sensor EPAC proteins and energy homeostasis. *Trends Endocrinol Metab* **25**, 60–71 (2014).
- Yan, J. *et al.* Enhanced leptin sensitivity, reduced adiposity, and improved glucose homeostasis in mice lacking exchange protein directly activated by cyclic AMP isoform 1. *Mol Cell Biol* **33**, 918–926 (2013).
- Hu, Y. *et al.* Role of Exchange Protein Directly Activated by Cyclic AMP Isoform 1 in Energy Homeostasis: Regulation of Leptin Expression and Secretion in White Adipose Tissue. *Mol Cell Biol* **36**, 2440–2450 (2016).
- Takahashi, H. *et al.* Role of Epac2A/Rap1 signaling in interplay between incretin and sulfonylurea in insulin secretion. *Diabetes* **64**, 1262–1272 (2015).
- Song, W. J., Mondal, P., Li, Y., Lee, S. E. & Hussain, M. A. Pancreatic beta-cell response to increased metabolic demand and to pharmacologic secretagogues requires EPAC2A. *Diabetes* **62**, 2796–2807 (2013).
- Ouyang, M., Zhang, L., Zhu, J. J., Schwede, F. & Thomas, S. A. Epac signaling is required for hippocampus-dependent memory retrieval. *Proc Natl Acad Sci USA* **105**, 11993–11997 (2008).
- Yang, Y. *et al.* EPAC null mutation impairs learning and social interactions via aberrant regulation of miR-124 and Zif268 translation. *Neuron* **73**, 774–788 (2012).
- Almahariq, M. *et al.* A novel EPAC-specific inhibitor suppresses pancreatic cancer cell migration and invasion. *Mol Pharmacol* **83**, 122–128 (2013).
- Almahariq, M. *et al.* Pharmacological inhibition and genetic knockdown of exchange protein directly activated by cAMP 1 reduce pancreatic cancer metastasis *in vivo*. *Mol Pharmacol* **87**, 142–149 (2015).



15. Onodera, Y., Nam, J. M. & Bissell, M. J. Increased sugar uptake promotes oncogenesis via EPAC/RAP1 and O-GlcNAc pathways. *J Clin Invest* **124**, 367–384 (2014).
16. Baljinnayam, E. *et al.* Exchange protein directly activated by cyclic AMP increases melanoma cell migration by a Ca<sup>2+</sup>-dependent mechanism. *Cancer Res* **70**, 5607–5617 (2010).
17. Hucho, T. B., Dina, O. A. & Levine, J. D. Epac mediates a cAMP-to-PKC signaling in inflammatory pain: an isolectin B4(+) neuron-specific mechanism. *J Neurosci* **25**, 6119–6126 (2005).
18. Wang, H. *et al.* Balancing GRK2 and EPAC1 levels prevents and relieves chronic pain. *J Clin Invest* **123**, 5023–5034 (2013).
19. Singhmar, P. *et al.* Critical role for Epac1 in inflammatory pain controlled by GRK2-mediated phosphorylation of Epac1. *Proc Natl Acad Sci USA* **113**, 3036–3041 (2016).
20. Okumura, S. *et al.* Epac1-dependent phospholamban phosphorylation mediates the cardiac response to stresses. *J Clin Invest* **124**, 2785–2801 (2014).
21. Lezoualc'h, F., Fazal, L., Laudette, M. & Conte, C. Cyclic AMP Sensor EPAC Proteins and Their Role in Cardiovascular Function and Disease. *Circ Res* **118**, 881–897 (2016).
22. Gong, B. *et al.* Exchange protein directly activated by cAMP plays a critical role in bacterial invasion during fatal rickettsioses. *Proc Natl Acad Sci USA* **110**, 19615–19620 (2013).
23. Tao, X. *et al.* Blocking of exchange proteins directly activated by cAMP leads to reduced replication of Middle East respiratory syndrome coronavirus. *J Virol* **88**, 3902–3910 (2014).
24. Chen, H. *et al.* Recent advances in the discovery of small molecules targeting exchange proteins directly activated by cAMP (EPAC). *J Med Chem* **57**, 3651–3665 (2014).
25. Parnell, E., Palmer, T. M. & Yarwood, S. J. The future of EPAC-targeted therapies: agonism versus antagonism. *Trends Pharmacol Sci* **36**, 203–214 (2015).
26. Schwede, F. *et al.* Structure-guided design of selective Epac1 and Epac2 agonists. *PLoS Biol* **13**, e1002038 (2015).
27. Tsalkova, T., Mei, F. C. & Cheng, X. A fluorescence-based high-throughput assay for the discovery of exchange protein directly activated by cyclic AMP (EPAC) antagonists. *PLoS One* **7**, e30441 (2012).
28. Tsalkova, T. *et al.* Isoform-specific antagonists of exchange proteins directly activated by cAMP. *Proc Natl Acad Sci USA* **109**, 18613–18618 (2012).
29. Courilleau, D. *et al.* Identification of a tetrahydroquinoline analog as a pharmacological inhibitor of the cAMP-binding protein Epac. *J Biol Chem* **287**, 44192–44202 (2012).
30. Vliem, M. J. *et al.* 8-pCPT-2'-O-Me-cAMP-AM: an improved Epac-selective cAMP analogue. *Chembiochem* **9**, 2052–2054 (2008).
31. Alasbahi, R. H. & Melzig, M. F. Forskolin and derivatives as tools for studying the role of cAMP. *Pharmazie* **67**, 5–13 (2012).
32. Herrmann, C., Horn, G., Spaargaren, M. & Wittinghofer, A. Differential interaction of the ras family GTP-binding proteins H-Ras, Rap1A, and R-Ras with the putative effector molecules Raf kinase and Ral-guanine nucleotide exchange factor. *J Biol Chem* **271**, 6794–6800 (1996).
33. Ye, N. *et al.* Structure-Activity Relationship Studies of Substituted 2-(Isoxazol-3-yl)-2-oxo-N'-phenyl-acetohydrazonoyl Cyanide Analogues: Identification of Potent Exchange Proteins Directly Activated by cAMP (EPAC) Antagonists. *J Med Chem* **58**, 6033–6047 (2015).
34. Zhu, Y. *et al.* Biochemical and pharmacological characterizations of ESI-09 based EPAC inhibitors: defining the ESI-09 “therapeutic window”. *Sci Rep* **5**, 9344 (2015).
35. Chen, H. *et al.* Identification and characterization of small molecules as potent and specific EPAC2 antagonists. *J Med Chem* **56**, 952–962 (2013).
36. Nikolaev, V. O., Bünemann, M., Hein, L., Hannawacker, A. & Lohse, M. J. Novel single chain cAMP sensors for receptor-induced signal propagation. *J Biol Chem* **279**, 37215–37218 (2004).
37. DiPilato, L. M., Cheng, X. & Zhang, J. Fluorescent indicators of cAMP and Epac activation reveal differential dynamics of cAMP signaling within discrete subcellular compartments. *Proc Natl Acad Sci USA* **101**, 16513–16518 (2004).
38. Ponsioen, B. *et al.* Detecting cAMP-induced Epac activation by fluorescence resonance energy transfer: Epac as a novel cAMP indicator. *EMBO Rep* **5**, 1176–1180 (2004).
39. Pannekoek, W. J., Kooistra, M. R., Zwartkruis, F. J. & Bos, J. L. Cell-cell junction formation: the role of Rap1 and Rap1 guanine nucleotide exchange factors. *Biochim Biophys Acta* **1788**, 790–796 (2009).

## Acknowledgements

This work was supported by National Institutes of Health grant R01GM066170, R35GM122536 and R01AI111464. The funders had no role in the study design, data collection and analysis, decision to publish, or preparation of the manuscript.

## Author Contributions

Y.Z. designing research studies, conducting experiments, acquiring and analyzing data and manuscript preparation; F.C.M. designing research studies, conducting experiments, acquiring and analyzing data. P.L. conducting experiments, acquiring and analyzing data; X.C. designing research studies, analyzing data and writing the manuscript.

## Additional Information

**Supplementary information** accompanies this paper at doi:10.1038/s41598-017-06432-4

**Competing Interests:** The authors declare that they have no competing interests.

**Publisher's note:** Springer Nature remains neutral with regard to jurisdictional claims in published maps and institutional affiliations.



**Open Access** This article is licensed under a Creative Commons Attribution 4.0 International License, which permits use, sharing, adaptation, distribution and reproduction in any medium or format, as long as you give appropriate credit to the original author(s) and the source, provide a link to the Creative Commons license, and indicate if changes were made. The images or other third party material in this article are included in the article's Creative Commons license, unless indicated otherwise in a credit line to the material. If material is not included in the article's Creative Commons license and your intended use is not permitted by statutory regulation or exceeds the permitted use, you will need to obtain permission directly from the copyright holder. To view a copy of this license, visit <http://creativecommons.org/licenses/by/4.0/>.

© The Author(s) 2017