



OPEN ACCESS

## EXTENDED REPORT

# GWAS of clinically defined gout and subtypes identifies multiple susceptibility loci that include urate transporter genes

Akiyoshi Nakayama,<sup>1</sup> Hirofumi Nakaoka,<sup>2</sup> Ken Yamamoto,<sup>3</sup> Masayuki Sakiyama,<sup>1,4</sup> Amara Shaukat,<sup>5</sup> Yu Toyoda,<sup>6</sup> Yukinori Okada,<sup>7,8,9</sup> Yoichiro Kamatani,<sup>8</sup> Takahiro Nakamura,<sup>10</sup> Tappei Takada,<sup>6</sup> Katsuhisa Inoue,<sup>11</sup> Tomoya Yasujima,<sup>12</sup> Hiroaki Yuasa,<sup>12</sup> Yuko Shirahama,<sup>3</sup> Hiroshi Nakashima,<sup>13</sup> Seiko Shimizu,<sup>1</sup> Toshihide Higashino,<sup>1</sup> Yusuke Kawamura,<sup>1</sup> Hiraku Ogata,<sup>1</sup> Makoto Kawaguchi,<sup>1</sup> Yasuyuki Ohkawa,<sup>14</sup> Inaho Danjoh,<sup>15</sup> Atsumi Tokumasu,<sup>16</sup> Keiko Ooyama,<sup>16</sup> Toshimitsu Ito,<sup>17</sup> Takaaki Kondo,<sup>18</sup> Kenji Wakai,<sup>19</sup> Blanka Stiburkova,<sup>20,21</sup> Karel Pavelka,<sup>21</sup> Lisa K Stamp,<sup>22</sup> Nicola Dalbeth,<sup>23</sup> Eurogout Consortium Yutaka Sakurai,<sup>13</sup> Hiroshi Suzuki,<sup>6</sup> Makoto Hosoyamada,<sup>24</sup> Shin Fujimori,<sup>25</sup> Takashi Yokoo,<sup>26</sup> Tatsuo Hosoya,<sup>26,27</sup> Ituro Inoue,<sup>2</sup> Atsushi Takahashi,<sup>8,28</sup> Michiaki Kubo,<sup>29</sup> Hiroshi Ooyama,<sup>16</sup> Toru Shimizu,<sup>30,31</sup> Kimiyoshi Ichida,<sup>27,32</sup> Nariyoshi Shinomiya,<sup>1</sup> Tony R Merriman,<sup>5</sup> Hirotaka Matsuo<sup>1</sup>

Handling editor Tore K Kvien

► Additional material is published online only. To view please visit the journal online (<http://dx.doi.org/10.1136/annrheumdis-2016-209632>).

For numbered affiliations see end of article.

## Correspondence to

Dr Hirotaka Matsuo, Department of Integrative Physiology and Bio-Nano Medicine, National Defense Medical College, 3-2 Namiki, Tokorozawa, Saitama 359-8513, Japan; [hmatsuo@ndmc.ac.jp](mailto:hmatsuo@ndmc.ac.jp)

AN, HNakaoka, KY, MS, AS and YT contributed equally.

Received 29 March 2016  
Revised 4 November 2016  
Accepted 5 November 2016  
Published Online First  
29 November 2016



CrossMark

**To cite:** Nakayama A, Nakaoka H, Yamamoto K, et al. *Ann Rheum Dis* 2017;**76**:869–877.

## ABSTRACT

**Objective** A genome-wide association study (GWAS) of gout and its subtypes was performed to identify novel gout loci, including those that are subtype-specific.

**Methods** Putative causal association signals from a GWAS of 945 clinically defined gout cases and 1213 controls from Japanese males were replicated with 1396 cases and 1268 controls using a custom chip of 1961 single nucleotide polymorphisms (SNPs). We also first conducted GWASs of gout subtypes. Replication with Caucasian and New Zealand Polynesian samples was done to further validate the loci identified in this study.

**Results** In addition to the five loci we reported previously, further susceptibility loci were identified at a genome-wide significance level ( $p < 5.0 \times 10^{-8}$ ): urate transporter genes (*SLC22A12* and *SLC17A1*) and *HIST1H2BF-HIST1H4E* for all gout cases, and *NIPAL1* and *FAM35A* for the renal underexcretion gout subtype. While *NIPAL1* encodes a magnesium transporter, functional analysis did not detect urate transport via *NIPAL1*, suggesting an indirect association with urate handling. Localisation analysis in the human kidney revealed expression of *NIPAL1* and *FAM35A* mainly in the distal tubules, which suggests the involvement of the distal nephron in urate handling in humans. Clinically ascertained male patients with gout and controls of Caucasian and Polynesian ancestries were also genotyped, and *FAM35A* was associated with gout in all cases. A meta-analysis of the three populations revealed *FAM35A* to be associated with gout at a genome-wide level of significance ( $p_{meta} = 3.58 \times 10^{-8}$ ).

**Conclusions** Our findings including novel gout risk loci provide further understanding of the molecular pathogenesis of gout and lead to a novel concept for the therapeutic target of gout/hyperuricaemia.

## INTRODUCTION

Gout is a common disease characterised by acute painful arthritis, and its global burden continues to rise with the increasingly ageing population.<sup>1</sup> Gout is caused by hyperuricaemia, and can be classified according to patients' clinical parameters reflecting its causes<sup>2,3</sup> as renal overload (ROL) gout and renal underexcretion (RUE) gout. As shown in online supplementary figure S1, patients with gout with increased urinary excretion of urate due to overproduction and/or decreased extra-renal underexcretion of urate are classified as having ROL gout, whereas those with decreased renal excretion of urate are defined as having RUE gout.<sup>2</sup> Reflecting their causes, almost all patients with gout are divided into those two subtypes. Although these subtypes are important from both genetic and pathophysiological points of view,<sup>2,4</sup> genome-wide association studies (GWASs) of gout subtypes have never been performed, partly due to the difficulty in assembling sufficient gout cases with requisite clinical data, including data from a time-consuming urinary collection examination.

We and other groups<sup>5–9</sup> recently reported gout/hyperuricaemia to have relatively strong genetic risk factors. More recently, and for the first time, we performed a GWAS with only clinically defined Japanese male gout cases in which 16 single nucleotide polymorphisms (SNPs) were replicated, and five gout-risk loci were identified including two novel loci (*MYL2-CUX2* and *CNIH-2*).<sup>10</sup> In the present study (see online supplementary figure S2), we extended our analysis to identify novel susceptibility loci for gout by replicating approximately 2000 SNPs top-ranked in the GWASs of all gout and/or its subtypes. In addition, for the first time, we performed GWASs of gout subtypes to identify

subtype-specific (cause-specific) risk loci. Furthermore, we conducted a replication study with independent Caucasian and Polynesian populations to validate loci.

## METHODS

### Subjects and genotyping

Genome-wide genotyping was performed with the Illumina HumanOmniExpress-12 v1.0 (Illumina) platform using 946 clinically defined gout cases and 1213 controls, all Japanese males. Detailed methods of genotyping and quality control are previously described.<sup>10</sup> Ultimately, 570 442 SNPs passed filters for 945 cases and 1213 controls. At the replication stage, 1246 cases were genotyped with a custom genotype platform using iSelect HD Custom Genotyping BeadChips (Illumina) on 1961 SNPs, as described in online supplementary methods and supplementary figure S3, and 150 gout cases were genotyped with the Illumina HumanOmniExpress-24 v1.0 (Illumina) platform. For controls, 1268 Japanese males with a serum uric acid (SUA) level  $\leq 7.0$  mg/dL and without gout history were recruited from BioBank Japan<sup>11 12</sup> and genotyped with the Illumina HumanOmniExpress-12 v1.0 (Illumina) platform. Finally, 1961 SNPs with 1396 gout cases and 1268 controls were successfully genotyped (see online supplementary table S1). A genome-wide significance threshold was set to be  $\alpha=5.0 \times 10^{-8}$  to claim evidence of a significant association.

GWASs of the two subtypes of gout, ROL gout and RUE gout (see online supplementary figure S1), were also performed, followed by replication studies with a custom SNP chip (see online supplementary figure S3) and a subsequent meta-analysis. As described previously,<sup>2 10</sup> and shown in online supplementary figure S1 and supplementary methods, ROL gout and RUE gout are defined when patients' urinary urate excretion is over 25.0 mg/hour/1.73 m<sup>2</sup> (600 mg/day/1.73 m<sup>2</sup>) and patients' urate clearance (urate clearance/creatinine clearance ratio, FE<sub>UA</sub>) is under 5.5%, respectively. For GWASs of gout subtypes, 1178 cases were classified as ROL gout (560 cases at GWAS stage and 618 cases at replication stage) and 1315 cases as RUE gout (619 cases at GWAS stage and 696 cases at replication stage), respectively (see online supplementary table S2).

A replication study with independent Caucasian and New Zealand (NZ) Polynesian sample sets was also performed to validate the genetic risk loci identified in the present study. This replication was done in a data set recruited from New Zealand<sup>13</sup> and from Europe by the Eurogout Consortium<sup>14</sup> comprising 1319 male cases and 514 male controls of European ancestry and 971 male cases and 565 male controls of NZ Polynesian ancestry. SNPs were genotyped by an allelic discrimination assay (TaqMan) with a LightCycler 480 Real-Time PCR (RT-PCR) System (Roche Applied Science, Indianapolis, Indiana, USA). Detailed information of clinical characteristics and genetic analysis is shown in online supplementary methods and tables S1–S3.

### Statistical analyses

The inverse-variance fixed-effects model was used for meta-analysis. In the meta-analysis with Japanese, Caucasian and NZ Polynesian populations or in the presence of heterogeneity ( $p_{\text{het}} < 0.05$  or  $I^2 > 50\%$ ), we implemented the DerSimonian and Laird random-effects model for meta-analysis.<sup>15</sup> For the replication analysis with Caucasian and NZ Polynesian sample sets, ORs were adjusted by age and ancestral group. All the meta-analyses were performed using the R V.3.1.1 and 3.2.2 (R Development Core Team, R: a language and environment for statistical computing, Vienna: R. Foundation for Statistical

Computing, 2006) with meta package. All calculations of linkage disequilibrium (LD, measured in  $r^2$ ) were conducted using the Japanese population. The detailed information for statistical analyses is described in online supplementary methods.

### Functional and localisation analyses

Urate transport analysis of NIPAL1 was performed with an oocyte expression system<sup>16 17</sup> with high potassium (HK) buffer or HK buffer without magnesium. For immunohistochemical analysis, the human kidney sections (3  $\mu$ m) incubated with anti-human NIPAL1 antibody (1:50) (LS-C164878; LifeSpan BioSciences, Washington, USA) or with anti-human FAM35A antibody (1:75) (HPA036582; Sigma-Aldrich, Missouri, USA) were used, and then visualised with diaminobenzidine (0.8 mM).<sup>18 19</sup> Intracellular localisation of NIPAL1 was also studied in *Xenopus* oocytes and Madin-Darby canine kidney II (MDCKII) cells. Detailed information for the functional and localisation analyses is described in online supplementary methods.

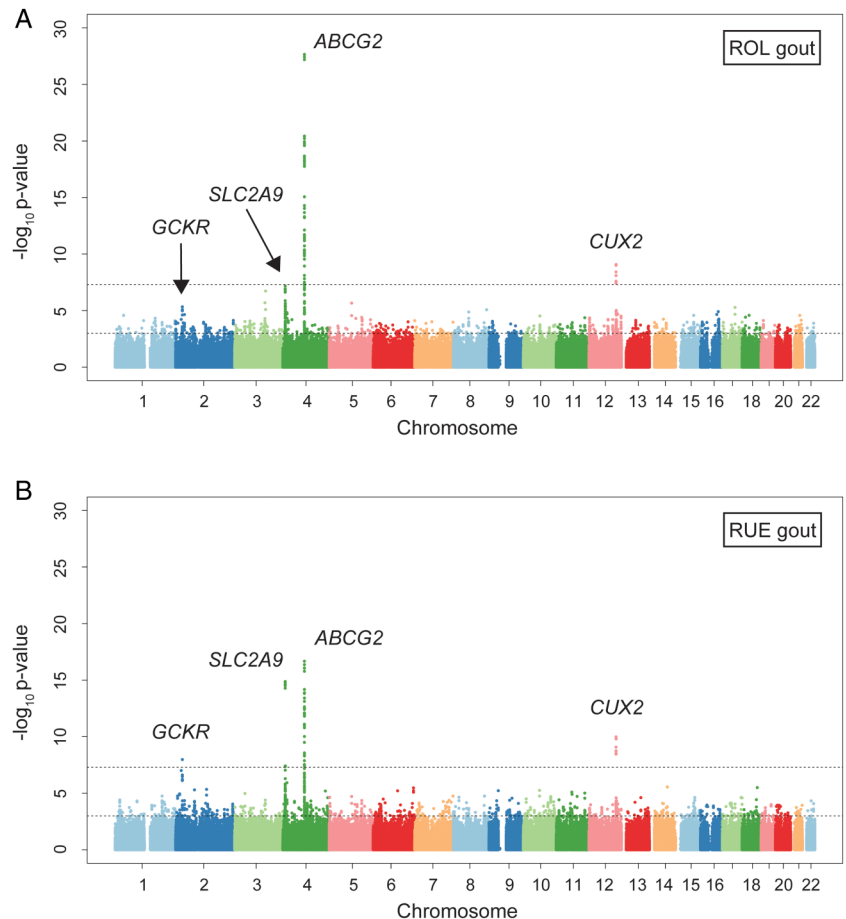
## RESULTS

### GWAS of all gout and its subtypes

In addition to the GWAS stage previously performed with 945 patients with clinically defined gout and 1213 controls, all Japanese males<sup>10</sup> (see online supplementary figure S4), the replication stage for all cases of gout was carried out by genotyping 1961 SNPs (see online supplementary figure S3 and supplementary note) in a further 1396 male patients and 1268 male controls, and a meta-analysis then conducted (see online supplementary figure S2). Furthermore, GWASs of two subtypes of gout, ROL gout (figure 1A) and RUE gout (figure 1B), were also performed in the present study, followed by replication studies with a custom SNP chip and a subsequent meta-analysis.

Meta-analysis of both the GWAS and the replication study for all gout cases (table 1) identified eight loci which showed evidence for associations at the genome-wide significance level: rs3114020 of *ABCG2* ( $p_{\text{meta}}=8.66 \times 10^{-35}$ ; OR=1.89), rs1014290 of *SLC2A9* ( $p_{\text{meta}}=6.50 \times 10^{-26}$ ; OR=1.57), rs4766566 of *CUX2* ( $p_{\text{meta}}=4.03 \times 10^{-20}$ ; OR=1.51), rs2285340 of *SLC22A12* ( $p_{\text{meta}}=4.61 \times 10^{-11}$ ; OR=1.40), rs1260326 of *GCKR* ( $p_{\text{meta}}=7.19 \times 10^{-11}$ ; OR=1.31), rs1165176 of *SLC17A1* ( $p_{\text{meta}}=1.47 \times 10^{-9}$ ; OR=1.42), rs11758351 of *HIST1H2BF-HIST1H4E* ( $p_{\text{meta}}=1.63 \times 10^{-8}$ ; OR=1.40) and rs4073582 of *CNIH-2* ( $p_{\text{meta}}=3.56 \times 10^{-8}$ ; OR=1.58). Among these eight loci, *SLC22A12*, *SLC17A1* and *HIST1H2BF-HIST1H4E* (figure 2A–C) were first identified as gout-risk loci by the GWAS approach at the genome-wide significance level. *SLC17A1* was identified here by the GWAS approach for the first time, while Hollis-Moffatt *et al*<sup>20</sup> reported that rs1183201, another SNP of *SLC17A1*, is strongly associated with gout in Caucasians and NZ Polynesian sample sets by the candidate gene approach. While rs11758351 of *HIST1H2BF-HIST1H4E* is located 374 kb downstream from rs1165176 of *SLC17A1*, they are not in LD with each other ( $r^2=0.03$ ), demonstrating them to be independent susceptibility loci for gout. There was also a significant signal from rs2532941 of *VARS2* ( $p_{\text{meta}}=2.74 \times 10^{-8}$ ; OR=1.32), which is located downstream of *HIST1H2BF-HIST1H4E* by 4.7 Mb, and is reported to be associated with mitochondrial respiration.<sup>21</sup> Since rs2532941 of *VARS2* showed mild LD with rs11758351 of *HIST1H2BF-HIST1H4E* ( $r^2=0.37$ ), its significance did not remain for the GWAS stage samples after adjustment with rs11758351 of *HIST1H2BF-HIST1H4E* ( $p=0.08$ ), or with both rs1165176 of *SLC17A1* and rs11758351 ( $p=0.11$ ).

**Figure 1** Manhattan plots of GWASs of subtypes of gout. Manhattan plots of GWASs of (A) ROL gout subtype and (B) RUE gout subtype. X-axis shows chromosomal positions. Y-axis shows  $-\log_{10}$  p values. The upper and lower dotted lines indicate the genome-wide significance threshold ( $p=5.0 \times 10^{-8}$ ) and the cut-off level for selecting single nucleotide polymorphisms for replication study ( $p=0.001$ ), respectively. GWAS, genome-wide association study; ROL, renal overload; RUE, renal underexcretion.



For GWASs of gout subtypes, 1178 cases were classified as ROL gout (560 cases at GWAS stage and 618 cases at replication stage) and 1315 cases as RUE gout (619 cases at GWAS stage and 696 cases at replication stage), respectively (see online supplementary table S2). The meta-analysis of a GWAS of the ROL gout subtype and a replication study revealed significant SNPs in the following four loci: rs2728104 of *ABCG2* ( $p_{meta}=5.08 \times 10^{-33}$ ; OR=1.84), rs4766566 of *CUX2* ( $p_{meta}=8.14 \times 10^{-17}$ ; OR=1.59), rs3733589 of *SLC2A9* ( $p_{meta}=2.25 \times 10^{-13}$ ; OR=1.47) and rs1260326 of *GCKR* ( $p_{meta}=5.39 \times 10^{-9}$ ; OR=1.35).

Another subtype analysis, that is, the meta-analysis of a GWAS of RUE gout and a replication study (table 1) demonstrated significant SNPs in the following seven loci: rs1014290 of *SLC2A9* ( $p_{meta}=8.71 \times 10^{-25}$ ; OR=1.69), rs1871744 of *ABCG2* ( $p_{meta}=2.49 \times 10^{-22}$ ; OR=1.81), rs4766566 of *CUX2* ( $p_{meta}=2.17 \times 10^{-18}$ ; OR=1.60), rs2285340 of *SLC22A12* ( $p_{meta}=8.79 \times 10^{-10}$ ; OR=1.44), rs780094 of *GCKR* ( $p_{meta}=1.62 \times 10^{-9}$ ; OR=1.35), rs11733284 of *NIPAL1* ( $p_{meta}=1.13 \times 10^{-8}$ ; OR=1.34) and rs7903456 of *FAM35A* ( $p_{meta}=4.29 \times 10^{-8}$ ; OR=1.34). The latter two loci, *NIPAL1* and *FAM35A*, were novel risk loci by the GWAS of the RUE gout subtype (figure 2D, E). In total, 10 loci were identified from the present GWAS of gout and its subtypes (table 1 and see online supplementary table S4).

Of the seven loci newly identified by GWAS of the RUE gout subtype, only *NIPAL1* and *FAM35A* had not been implicated previously in the GWASs of SUA levels or gout. Analysis with data from previously reported GWAS<sup>22</sup> of SUA in Caucasians revealed the association with *NIPAL1* and *FAM35A* loci (see online supplementary figure S5).

#### Urate transport analysis of NIPAL1 transporter

*NIPAL1* and *FAM35A* were revealed to be associated with RUE gout in the present study. *NIPAL1* has been reported to be a magnesium transporter,<sup>23</sup> which has nine transmembrane domains (figure 3A), whereas *FAM35A* is predicted to be a soluble protein. In this context, we hypothesised that *NIPAL1* could be involved in the regulation of urate handling as a renal urate efflux transporter. However, our functional analysis using *Xenopus* oocytes did not show urate transport via *NIPAL1*, regardless of the presence of magnesium (figure 3B).

#### Localisation analysis of NIPAL1 and FAM35A

By immunohistochemical analysis, *NIPAL1* and *FAM35A* showed cytosolic expression in the renal distal tubules of human kidney (figure 4A, B). Both proteins were also weakly detected in the cytoplasm of collecting ducts. *NIPAL1*-expressing *Xenopus* oocytes and MDCKII cells also showed intracellular localisation of *NIPAL1* (see online supplementary figure S6).

#### Replication study of all gout cases with Caucasian and Polynesian populations

A replication study for the discovered loci (*SLC22A12*, *SLC17A1*, *HIST1H2BF-HIST1H4E*, *NIPAL1* and *FAM35A*) was performed for all gout cases with males drawn from Caucasian (1319 cases and 514 controls) and NZ Polynesian populations (971 cases and 565 controls). Because a gain-of-function SNP of *SLC17A1*, rs1165196 (Ile269Thr),<sup>16</sup> was in strong LD with rs1165176 ( $r^2=0.99$ ), we performed the following analyses using rs1165196, assuming that the causal SNP in this locus was rs1165196 of *SLC17A1*. Among these five loci, the

**Table 1** Single nucleotide polymorphisms (SNPs) associated with gout and its subtypes at a genome-wide level of significance in the Japanese population

Gout types	SNP*	Chr.	(bp)†	Position	GWAS‡										Replication study**				Meta-analysis††		Heterogeneity			
					A1/A2§		Cases		Controls		OR (95% CI)		p Value		Cases		Controls		OR (95% CI)		p Value		Cochran's Q	
					A1	A2	Cases	Controls	OR	95% CI	p Value	Cases	Controls	OR	95% CI	p Value	Cases	Controls	OR	95% CI	p Value	Q	I <sup>2</sup> (%)	
All gout	rs1260326	2	27730940	GCKR	T/C	0.616	0.535	1.39	(1.23 to 1.57)	1.34	10 <sup>-7</sup>	0.611	0.557	1.25	(1.12 to 1.39)	6.10	10 <sup>-5</sup>	1.31	(1.21 to 1.42)	7.19	10 <sup>-11</sup>	0.20	38.2	
	rs1014290	4	10001861	SLC2A9	T/C	0.678	0.564	1.63	(1.44 to 1.85)	1.75	10 <sup>-14</sup>	0.673	0.576	1.51	(1.35 to 1.69)	2.97	10 <sup>-13</sup>	1.57	(1.44 to 1.70)	6.50	10 <sup>-26</sup>	0.39	0.0	
	rs3114020	4	89083666	ABCG2	C/T	0.842	0.724	2.03	(1.75 to 2.37)	1.17	10 <sup>-20</sup>	0.844	0.752	1.78	(1.55 to 2.04)	7.74	10 <sup>-17</sup>	1.89	(1.71 to 2.09)	8.66	10 <sup>-35</sup>	0.20	38.9	
	rs1165176	6	25830298	SLC17A1	G/A	0.874	0.834	1.38	(1.16 to 1.64)	2.89	10 <sup>-4</sup>	0.872	0.824	1.46	(1.25 to 1.69)	1.08	10 <sup>-6</sup>	1.42	(1.27 to 1.59)	1.47	10 <sup>-9</sup>	0.63	0.0	
	rs11758351	6	26203910	HIST1H2BF-HIST1H4E	G/T	0.158	0.121	1.37	(1.15 to 1.63)	4.22	10 <sup>-4</sup>	0.158	0.116	1.43	(1.22 to 1.67)	1.01	10 <sup>-5</sup>	1.40	(1.25 to 1.57)	1.63	10 <sup>-8</sup>	0.72	0.0	
	rs2285340	11	64435906	SLC22A12	A/G	0.228	0.174	1.40	(1.21 to 1.63)	1.09	10 <sup>-5</sup>	0.227	0.174	1.40	(1.22 to 1.61)	9.96	10 <sup>-7</sup>	1.40	(1.27 to 1.55)	4.61	10 <sup>-11</sup>	1.00	0.0	
	rs4073582	11	66050712	CNIH-2	C/T	0.950	0.915	1.78	(1.39 to 2.29)	4.32	10 <sup>-6</sup>	0.943	0.920	1.44	(1.16 to 1.79)	8.47	10 <sup>-4</sup>	1.58	(1.34 to 1.86)	3.56	10 <sup>-8</sup>	0.21	36.1	
	rs4766566	12	111706877	CUX2	T/C	0.735	0.633	1.60	(1.41 to 1.83)	1.22	10 <sup>-12</sup>	0.741	0.665	1.44	(1.28 to 1.62)	2.07	10 <sup>-9</sup>	1.51	(1.38 to 1.65)	4.03	10 <sup>-20</sup>	0.22	33.8	
ROL gout	rs1260326	2	27730940	GCKR	T/C	0.611	0.535	1.36	(1.18 to 1.58)	2.43	10 <sup>-5</sup>	0.626	0.557	1.33	(1.16 to 1.53)	6.12	10 <sup>-5</sup>	1.35	(1.22 to 1.49)	5.39	10 <sup>-9</sup>	0.81	0.0	
	rs3733589	4	9987324	SLC2A9	G/A	0.662	0.570	1.48	(1.28 to 1.71)	2.00	10 <sup>-7</sup>	0.668	0.580	1.46	(1.26 to 1.68)	2.05	10 <sup>-7</sup>	1.47	(1.32 to 1.63)	2.25	10 <sup>-13</sup>	0.88	0.0	
	rs278104	4	88973006	ABCG2	C/T	0.505	0.346	1.93	(1.67 to 2.23)	3.28	10 <sup>-19</sup>	0.496	0.359	1.75	(1.53 to 2.01)	1.56	10 <sup>-15</sup>	1.84	(1.66 to 2.03)	5.08	10 <sup>-33</sup>	0.35	0.0	
	rs4766566	12	111706877	CUX2	T/C	0.737	0.633	1.62	(1.39 to 1.90)	8.42	10 <sup>-10</sup>	0.757	0.665	1.57	(1.34 to 1.83)	7.55	10 <sup>-9</sup>	1.59	(1.43 to 1.78)	8.14	10 <sup>-17</sup>	0.76	0.0	
RUE gout	rs780094	2	27741237	GCKR	T/C	0.633	0.543	1.45	(1.26 to 1.67)	2.43	10 <sup>-7</sup>	0.615	0.559	1.26	(1.10 to 1.44)	6.47	10 <sup>-4</sup>	1.35	(1.22 to 1.48)	1.62	10 <sup>-9</sup>	0.16	48.8	
	rs1014290	4	10001861	SLC2A9	T/C	0.699	0.564	1.80	(1.55 to 2.08)	1.58	10 <sup>-15</sup>	0.685	0.576	1.60	(1.39 to 1.84)	1.72	10 <sup>-11</sup>	1.69	(1.53 to 1.87)	8.71	10 <sup>-25</sup>	0.26	21.8	
	rs11733284	4	48028097	NIPAL1	A/G	0.346	0.281	1.35	(1.17 to 1.57)	6.48	10 <sup>-5</sup>	0.342	0.280	1.34	(1.16 to 1.54)	6.36	10 <sup>-5</sup>	1.34	(1.21 to 1.49)	1.13	10 <sup>-8</sup>	0.91	0.0	
	rs1871744	4	89039629	ABCG2	T/C	0.834	0.723	1.93	(1.62 to 2.29)	3.85	10 <sup>-14</sup>	0.824	0.733	1.71	(1.45 to 2.01)	7.04	10 <sup>-11</sup>	1.81	(1.60 to 2.04)	2.49	10 <sup>-22</sup>	0.33	0.0	
	rs7903456	10	88919319	FAM35A	A/G	0.303	0.248	1.32	(1.13 to 1.53)	4.32	10 <sup>-4</sup>	0.296	0.235	1.37	(1.18 to 1.59)	3.09	10 <sup>-5</sup>	1.34	(1.21 to 1.49)	4.29	10 <sup>-8</sup>	0.72	0.0	
	rs2285340	11	64435906	SLC22A12	A/G	0.236	0.174	1.47	(1.25 to 1.74)	8.04	10 <sup>-6</sup>	0.228	0.174	1.41	(1.20 to 1.66)	4.04	10 <sup>-5</sup>	1.44	(1.28 to 1.62)	8.79	10 <sup>-10</sup>	0.72	0.0	
	rs4766566	12	111706877	CUX2	T/C	0.738	0.633	1.63	(1.40 to 1.89)	1.58	10 <sup>-10</sup>	0.759	0.665	1.58	(1.36 to 1.83)	9.51	10 <sup>-10</sup>	1.60	(1.44 to 1.78)	2.17	10 <sup>-18</sup>	0.78	0.0	

\*dbSNP rs number. SNPs having associations for all gout, ROL gout and RUE gout at the lowest p value in each locus by meta-analysis are shown in this table.

†SNP positions are based on NCBI human genome reference sequence build 37.4.

‡Five discovered loci are shown in bold.

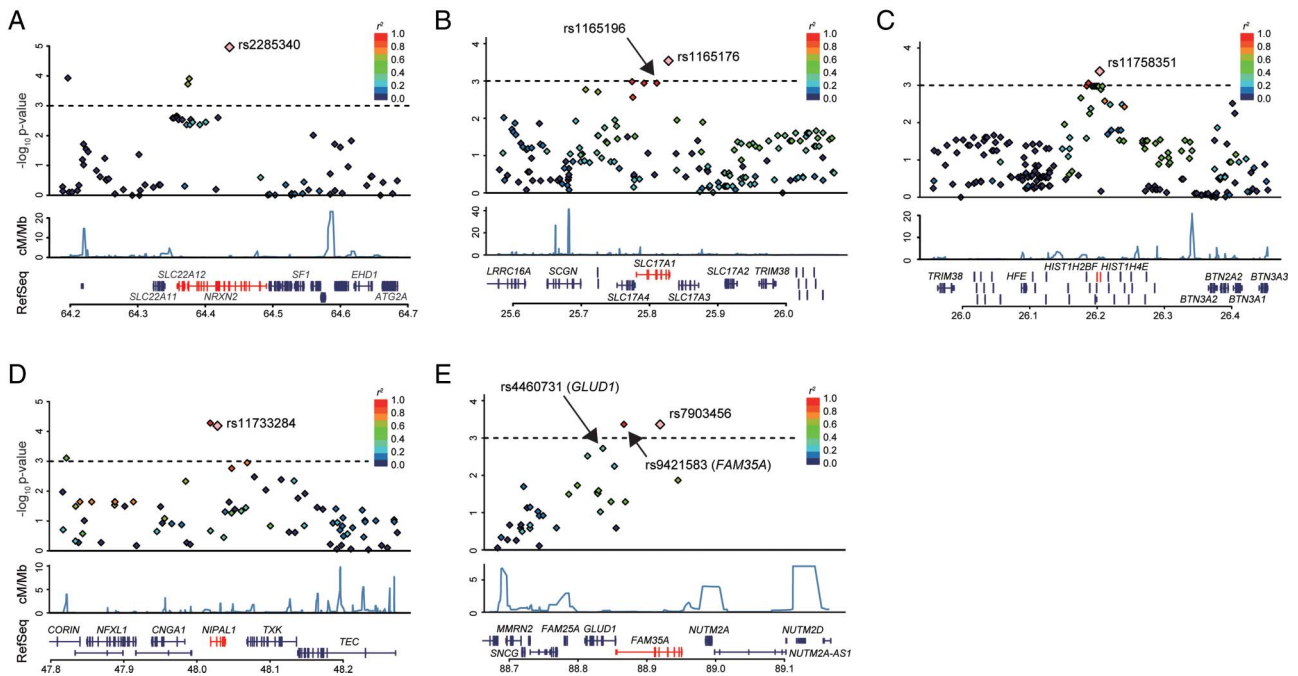
§A1 is risk-associated allele and A2 is non-risk-associated allele.

¶945 cases for all gout, 560 cases for ROL gout, 619 cases for RUE gout with 1213 controls from Japanese male population.

\*\*1396 cases for all gout, 618 cases for ROL gout, 696 cases for RUE gout with 1268 controls from Japanese male population.

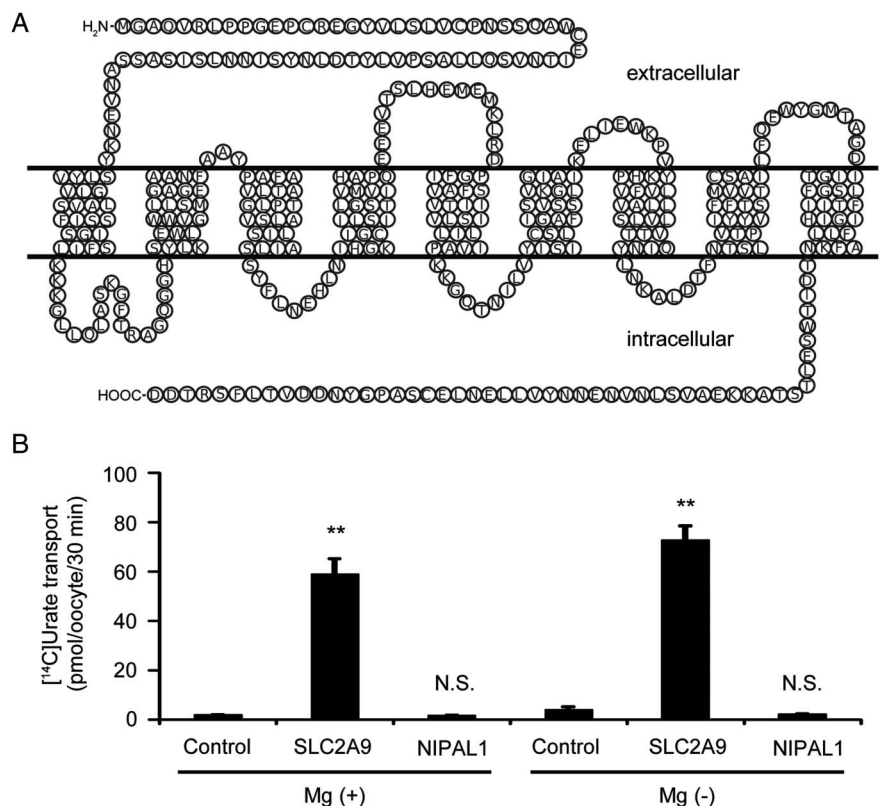
††Meta-analysis of GWAS and replication samples.

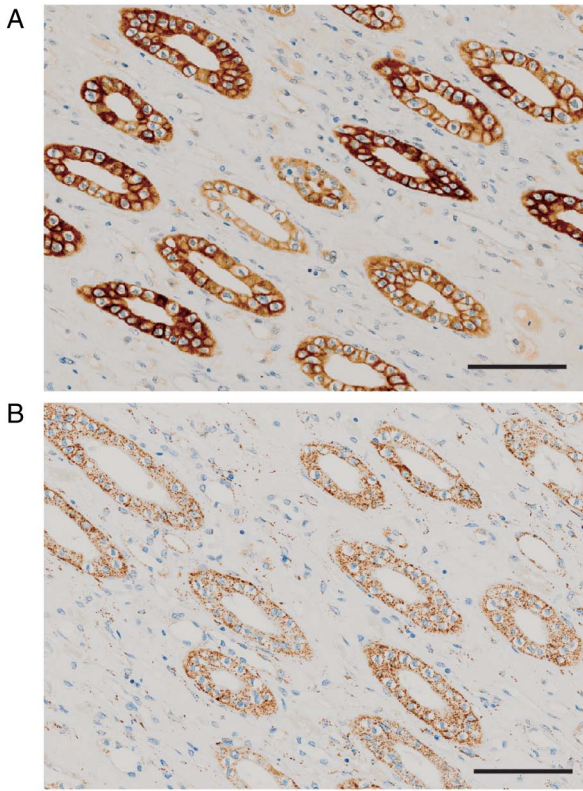
Chr., chromosome; GWAS, genome-wide association study; ROL, renal overload; RUE, renal underexcretion; SNP, single nucleotide polymorphism.



**Figure 2** Regional association plots of five discovered loci. Three loci were revealed to exceed the genome-wide significance level from the meta-analysis with all gout cases, and two loci with renal underexcretion (RUE) gout cases. The highest association signal in each panel is located on (A) *SLC22A12*, (B) *SLC17A1* and (C) *HIST1H2BF-HIST1H4E* for all gout cases, and (D) *NIPAL1* and (E) *FAM35A* for RUE gout cases. The region within 250 kb from the single nucleotide polymorphism (SNP) indicating the lowest p value is shown. (Top panel) Plots of  $-\log_{10} p$  values for the test of SNP association with gout in the genome-wide association study stage. The SNP showing the lowest p value in the meta-analysis is depicted as a pink diamond. Other SNPs are colour-coded according to the extent of linkage disequilibrium (measured in  $r^2$ ) with the SNP showing the lowest p value. (Middle panel) Recombination rates (centimorgans per Mb) estimated from HapMap Phase II data are plotted. (Bottom panel) RefSeq genes. Genomic coordinates are based on NCBI human genome reference sequence build 37.

**Figure 3** Functional analysis of *NIPAL1* transporter. (A) The topological model of the *NIPAL1* transporter. *NIPAL1* is predicted to have nine transmembrane regions. The amino acid sequences of *NIPAL1* were obtained from GenBank (accession code NM\_207330). (B) Urate transport analysis of *NIPAL1*. *SLC2A9* (also known as *GLUT9*) is a renal urate transporter and is used for a positive control for the urate transport analysis. In contrast to *SLC2A9*, urate transport via *NIPAL1* was not detected, regardless of the presence of magnesium. Data are expressed as mean  $\pm$  SEM (n=8). Statistical analyses for significant differences were performed according to Student's t-test. (\*\*p<0.01; N.S., not significantly different as compared with control.).





**Figure 4** Localisation analysis of NIPAL1 and FAM35A in the human kidney. Cytosolic expression was detected strongly in distal tubules and weakly in collecting ducts in human kidney for (A) NIPAL1 protein and (B) FAM35A protein. Bar=100 µm.

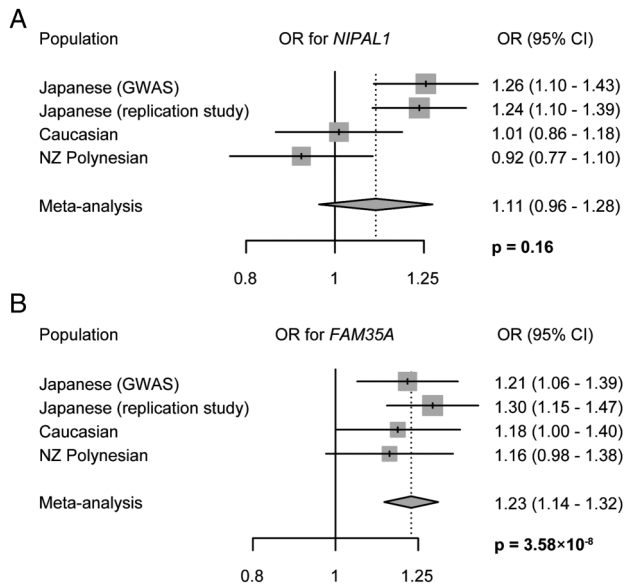
meta-analysis of those populations for all gout revealed a significant association with rs7903456 of *FAM35A* ( $p_{meta}=9.72 \times 10^{-3}$ ; OR=1.17) (table 2). Although *SLC17A1* did not show significance ( $p_{meta}=0.119$ ) in the present study of those populations (table 2), a previous paper<sup>20</sup> revealed a significant association of *SLC17A1* with gout in Caucasian and NZ Polynesian sample sets, indicating the necessity of further replication studies to investigate the ancestral differences in the significance of other genetic loci including *SLC17A1*. Genotyping the *CUX2* and *CNIH-2* loci, which were identified in both our present and previous GWASs of Japanese,<sup>10</sup> was also performed, and the *CUX2* locus was replicated successfully for the first time in other populations (see online supplementary table S5). The results of further association analyses and expression quantitative trait locus (eQTL) analysis are shown in online supplementary note and tables S6 and S7. Significant effects on FE<sub>UA</sub> were detected in *NIPAL1*, *FAM35A* and *SLC22A12* loci in the Japanese population, and were also observed at *SLC17A1* in NZ Polynesian population.

A further meta-analysis of all gout cases with Japanese, Caucasian and NZ Polynesian populations was performed for *NIPAL1* and *FAM35A*, which were at a genome-wide significance level in the Japanese population only for the RUE gout subtype, and not for all gout cases. rs11733284 of *NIPAL1* was not associated with all gout ( $p_{meta}=0.16$ ; OR=1.11), suggesting the presence of ancestral differences in genetic effects of this locus, or a subtype-specific effect. On the other hand, rs7903456 of *FAM35A* showed an association with all gout at a genome-wide level of significance ( $p_{meta}=3.58 \times 10^{-8}$ ; OR=1.23) (figure 5), indicating that rs7903456 is a susceptibility locus for all gout as well as the RUE gout subtype.

**Table 2** Replication study of all gout for five discovered loci in Caucasian and NZ Polynesian sample sets

SNP*	Chr.	position (bp)†	Gene	Caucasians‡				NZ Polynesians¶				Meta-analysis**				
				Frequency of A1		p Value	OR (95% CI)	Frequency of A1		p Value	OR (95% CI)	Heterogeneity				
				Cases	Controls			Cases	Controls			Cochran's Q	I <sup>2</sup> (%)			
rs11733284	4	48028097	<i>NIPAL1</i>	A/G	0.362	0.356	1.01 (0.86 to 1.18)	0.896	0.251	0.270	0.92 (0.77 to 1.10)	0.355	0.97 (0.86 to 1.09)	0.603	0.43	0.0
rs1165196	6	25813150	<i>SLC17A1</i>	T/C	0.614	0.583	1.11 (0.95 to 1.30)	0.271	0.731	0.711	1.12 (0.93 to 1.35)	0.266	1.11 (0.98 to 1.25)	0.119	0.88	0.0
rs11758351	6	26203910	<i>HIST1H2BF-HIST1H4E</i>	G/T	0.141	0.158	0.86 (0.70 to 1.07)	0.173	0.192	0.199	0.90 (0.74 to 1.10)	0.334	0.88 (0.77 to 1.02)	0.0941	0.77	0.0
rs7903456	10	88919319	<i>FAM35A</i>	A/G	0.737	0.699	1.18 (1.00 to 1.40)	0.0462	0.351	0.333	1.16 (0.98 to 1.38)	0.0997	1.17 (1.04 to 1.32)	9.72×10 <sup>-3</sup>	0.85	0.0
rs2285340††	11	64435906	<i>SLC22A12</i>	A/G	-	-	-	-	0.158	0.143	1.06 (0.84 to 1.35)	0.634	-	-	-	-

\*dbSNP rs number.  
 †SNP positions are based on NCBI human genome reference sequence build 37.4.  
 ‡A1 is risk-associated allele, and A2 is non-risk-associated allele.  
 §1319 cases for all gout and 514 controls from Caucasian male population.  
 ¶971 cases for all gout and 565 controls from NZ Polynesian male population.  
 \*\*Meta-analysis of Caucasian and NZ Polynesian samples.  
 ††rs2285340 is monomorphic in Caucasians.  
 Chr., chromosome; NZ, New Zealand; SNP, single nucleotide polymorphism.



**Figure 5** Forest plots for all gout among Japanese, Caucasian and New Zealand (NZ) Polynesian populations. Although rs11733284 of *NIPAL1* (A) did not show significant association with all gout, rs7903456 of *FAM35A* (B) revealed an association with all gout at a genome-wide significance level ( $p_{meta}=3.58 \times 10^{-8}$ ; OR=1.23). GWAS, genome-wide association study.

Meta-analysis of all gout for the other three loci (*SLC22A12*, *SLC17A1* and *HIST1H2BF-HIST1H4E*) was also performed with Japanese, Caucasian and NZ Polynesian populations as shown in online supplementary figure S7. rs11758351 of *HIST1H2BF-HIST1H4E* did not show a significant association with gout ( $p_{meta}=0.40$ ; OR=1.12). rs2285340 of *SLC22A12* and rs1165196 of *SLC17A1* did not reach a genome-wide level of significance ( $p_{meta}=2.47 \times 10^{-4}$ ; OR=1.31; and  $p_{meta}=1.28 \times 10^{-3}$ ; OR=1.25, respectively) partly due to statistical fluctuation in relatively small sample sets, although the effects were consistently in the same direction.

## DISCUSSION

With clinically defined gout cases, we previously performed a GWAS<sup>10</sup> and revealed that *ABCG2*, *SLC2A9*, *MYL2-CUX2*, *GCKR* and *CNIH-2* were associated with gout at a genome-wide significance level (see online supplementary figure S4). A more recent GWAS by Li *et al*<sup>24</sup> with clinically ascertained gout cases revealed three novel loci (*BCAS3*, *RFX3* and *KCNQ1*) in Han Chinese. In the present study, we performed a gout follow-up study focused on loci not reaching the genome-wide level of significance in the previous GWAS,<sup>10</sup> genotyping 1961 SNPs in an additional 1396 cases and 1268 controls. We revealed a total of eight loci to be associated with all gout cases in Japanese males (table 1). Among them, three loci (*SLC22A12*, *SLC17A1* and *HIST1H2BF-HIST1H4E*) were first identified as gout risk loci at a genome-wide significance level by the present GWAS approach.

Both *SLC22A12* and *SLC17A1* encode urate transporters at the apical side of the renal proximal tubule<sup>16 25</sup> (see online supplementary figure S8) and are reportedly associated with SUA level in humans by previous GWASs of SUA.<sup>12 22 26 27</sup> Therefore, it is reasonable that SNPs around these loci would display significant associations with gout or sequelae of hyperuricaemia (see also online supplementary note for detail).

The *HIST1H2BF* and *HIST1H4E* genes encode histone 1 H2bf and histone 1 H4e, respectively, both of which have a role of binding DNA to form a chromatin structure. Both are replication-dependent histone proteins with expression dependent on cell cycle. Therefore, functional SNPs in this locus might affect the stability of the chromatin structure, varying the cell cycle, cell amount or reaction to inflammation by changing the expression level of histones in the kidney and/or intestine. Since it is also possible that rs11758351 is a surrogate marker near these histone genes, further studies concerning this locus will be necessary.

In this study, we first performed GWASs of gout subtypes, that is, RUE gout and ROL gout (figure 1). From the results of meta-analysis for GWASs of both ROL gout and RUE gout, four shared loci of *GCKR*, *SLC2A9*, *ABCG2* and *CUX2* were identified at a genome-wide significance level, showing the importance of these loci for the pathogenesis of both gout subtypes. Especially for RUE gout, three more loci, *SLC22A12*, *NIPAL1* and *FAM35A*, were identified to be associated at a genome-wide significance level. As described above, it is compatible for *SLC22A12* to be associated with RUE gout, because *SLC22A12* (like *SLC2A9*) encodes a renal urate reabsorption transporter.<sup>25 28</sup>

Of note, *NIPAL1* and *FAM35A* were identified as novel loci by performing GWAS of the RUE gout subtype. Associations with gout and SUA have never been previously reported with *NIPAL1* and *FAM35A*. Furthermore, to our knowledge, there is no study reporting an association between any diseases and *NIPAL1* or *FAM35A*.

*NIPAL1*, also known as *NIPA3*, is reportedly expressed on the membrane of some organs including kidney, and to be a magnesium transporter,<sup>23</sup> as another magnesium transporter *NIPA2*.<sup>23</sup> Because *NIPAL1* was associated with RUE gout (ie, gout with renal urate underexcretion), we hypothesised that *NIPAL1* is a urate transporter in the human kidney. However, our functional study did not show urate transport via *NIPAL1*, regardless of the presence of magnesium (figure 3B). Moreover, localisation to the membrane was not detected for *NIPAL1* protein, which was mainly expressed within the distal tubules of human kidney, as revealed by immunohistochemical analysis (figure 4A). A similar result was obtained in confocal microscopic observation, with *NIPAL1*-expressing oocytes showing intracellular localisation of *NIPAL1* protein (see online supplementary figure S6). These findings suggest that *NIPAL1* is not a urate transporter and that it might be involved in the indirect regulation of urate transport kinetics. Nevertheless, recent studies have revealed associations between hyperuricaemia and magnesium intake,<sup>29</sup> serum magnesium level<sup>30</sup> and magnesium excretion.<sup>31</sup> Together with previous reports, our findings support the hypothesis that there could be some relationship between gout and magnesium handling via magnesium transporters including *NIPAL1*, and that the present study could well provide new insights into the genetic background of urate and magnesium handling in patients with gout/hyperuricaemia.

*FAM35A* is ubiquitously expressed in organs including the kidney, and our immunohistochemical analysis of human kidney also revealed cytosolic immunoreactivity of the *FAM35A* protein mainly in the distal tubules (figure 4B). Our findings from *FAM35A* and *NIPAL1* suggest the involvement of the distal nephron in gout progression as well as dysfunction in urate handling in humans (see online supplementary figure S9). To date, the molecular function of *FAM35A* is totally unknown. Although further studies are necessary to confirm this, it is possible that genes near *FAM35A* including *GLUD1* (figure 2E)

have some relationship with gout (see also online supplementary note for details).

In addition to studying the Japanese population, we performed a replication study with male Caucasian and NZ Polynesian sample sets for the five newly discovered loci. Since they were not divided into subtypes, further evaluations by meta-analysis were conducted with all gout groups. While other loci were not replicated, rs7903456 of *FAM35A* was replicated with a significant association with gout (table 2). *CUX2*, which was reported by both our present and previous gout GWAS in Japanese,<sup>10</sup> was also replicated in these sample sets (see online supplementary table S5).

A meta-analysis of all gout with Japanese, Caucasian and NZ Polynesian populations for these five SNPs revealed *FAM35A* to be associated with all gout at the genome-wide significance level (figure 5B), and that rs2285340 of *SLC22A12* and rs1165196 of *SLC17A1* showed a significant association but did not reach a genome-wide significance level (see online supplementary figure S7). rs11758351 of *HIST1H2BF-HIST1H4E* and rs11733284 of *NIPAL1* were not associated by this meta-analysis, although these loci showed a genome-wide significant association in the Japanese population. Since this might be due to the differences in LD structure among these populations, a replication analysis with East Asian populations will be necessary for these loci. rs2285340 of *SLC22A12* was monomorphic (only G allele) in Caucasians and not associated with NZ Polynesians. Therefore, replication studies of this locus in East Asian populations would also be insightful for future analysis. Although the underlying molecular mechanism of gout by *FAM35A* is unknown, this locus seems to have a common pathophysiological risk of gout for Japanese, NZ Polynesians and Caucasians.

In summary, we performed GWASs of all gout as well as gout subtypes and identified five loci in addition to the five loci that we reported previously.<sup>10</sup> Furthermore, the *FAM35A* locus showed an association with all gout by meta-analysis among the Japanese, Caucasian and NZ Polynesian sample sets at a genome-wide level of significance. Together with their expression in the renal distal tubules, the identification of *NIPAL1* and *FAM35A* as gout loci suggests the involvement of the distal nephron (see online supplementary figure S9) in the urate handling of the human kidney and in the pathogenesis of gout/hyperuricaemia. These findings could well provide a clue leading to a novel concept for the therapeutic target of gout (see online supplementary figure S10).

#### Author affiliations

- <sup>1</sup>Department of Integrative Physiology and Bio-Nano Medicine, National Defense Medical College, Tokorozawa, Saitama, Japan
- <sup>2</sup>Division of Human Genetics, Department of Integrated Genetics, National Institute of Genetics, Mishima, Shizuoka, Japan
- <sup>3</sup>Department of Medical Chemistry, Kurume University School of Medicine, Kurume, Fukuoka, Japan
- <sup>4</sup>Department of Dermatology, National Defense Medical College, Tokorozawa, Saitama, Japan
- <sup>5</sup>Department of Biochemistry, University of Otago, Dunedin, New Zealand
- <sup>6</sup>Department of Pharmacy, The University of Tokyo Hospital, Tokyo, Japan
- <sup>7</sup>Department of Human Genetics and Disease Diversity, Graduate School of Medical and Dental Sciences, Tokyo Medical and Dental University, Tokyo, Japan
- <sup>8</sup>Laboratory for Statistical Analysis, RIKEN Center for Integrative Medical Sciences, Yokohama, Kanagawa, Japan
- <sup>9</sup>Department of Statistical Genetics, Osaka University Graduate School of Medicine, Osaka, Japan
- <sup>10</sup>Laboratory for Mathematics, National Defense Medical College, Tokorozawa, Saitama, Japan
- <sup>11</sup>Department of Biopharmaceutics, School of Pharmacy, Tokyo University of Pharmacy and Life Sciences, Tokyo, Japan
- <sup>12</sup>Department of Biopharmaceutics, Graduate School of Pharmaceutical Sciences, Nagoya City University, Nagoya, Aichi, Japan

- <sup>13</sup>Department of Preventive Medicine and Public Health, National Defense Medical College, Tokorozawa, Saitama, Japan
- <sup>14</sup>Division of Transcriptomics, Research Center for Transomics Medicine, Medical Institute of Bioregulation, Kyushu University, Fukuoka, Japan
- <sup>15</sup>Department of Integrative Genomics, Tohoku Medical Megabank Organization, Tohoku University, Sendai, Miyagi, Japan
- <sup>16</sup>Ryougoku East Gate Clinic, Tokyo, Japan
- <sup>17</sup>Department of Internal Medicine, Self-Defense Forces Central Hospital, Tokyo, Japan
- <sup>18</sup>Program in Radiological and Medical Laboratory Sciences, Pathophysiological Laboratory Sciences, Nagoya University Graduate School of Medicine, Nagoya, Aichi, Japan
- <sup>19</sup>Department of Preventive Medicine, Nagoya University Graduate School of Medicine, Nagoya, Aichi, Japan
- <sup>20</sup>First Faculty of Medicine, Charles University in Prague and General University Hospital in Prague, Institute of Inherited Metabolic Disorders, Prague, Czech Republic
- <sup>21</sup>Institute of Rheumatology, Prague, Czech Republic
- <sup>22</sup>Department of Medicine, University of Otago, Christchurch, New Zealand
- <sup>23</sup>Department of Medicine, University of Auckland, Grafton, Auckland, New Zealand
- <sup>24</sup>Department of Human Physiology and Pathology, Faculty of Pharma-Sciences, Teikyo University, Tokyo, Japan
- <sup>25</sup>Department of Internal Medicine, Teikyo University School of Medicine, Tokyo, Japan
- <sup>26</sup>Division of Kidney and Hypertension, Department of Internal Medicine, Jikei University School of Medicine, Tokyo, Japan
- <sup>27</sup>Department of Pathophysiology and Therapy in Chronic Kidney Disease, Jikei University School of Medicine, Tokyo, Japan
- <sup>28</sup>Omics Research Center, National Cerebral and Cardiovascular Center, Suita, Osaka, Japan
- <sup>29</sup>Laboratory for Genotyping Development, Center for Integrative Medical Sciences, RIKEN, Yokohama, Kanagawa, Japan
- <sup>30</sup>Midorigaoka Hospital, Takatsuki, Osaka, Japan
- <sup>31</sup>Kyoto Industrial Health Association, Kyoto, Japan
- <sup>32</sup>Department of Pathophysiology, Tokyo University of Pharmacy and Life Sciences, Tokyo, Japan

**Acknowledgements** The authors thank all the participants involved in this study. They are also grateful to members of the BioBank Japan Project for supporting the study. They are indebted to M Watanabe and Y Katsurada (National Defense Medical College) for immunohistochemical analysis; K Gotanda, Y Morimoto, M Miyazawa, T Chiba, Y Utsumi, S Terashige, Y Kato, H Sasaki, Y Takashima, S Tatsukawa, A Akashi, Y Tanahashi, Y Nagao, M Nakajima, H Inoue, S Takeuchi (National Defense Medical College), M Sonoda (Kurume University School of Medicine) and T Tamatsukuri (Jikei University School of Medicine) for genetic analysis; S Ushida (Ikagaku) and H Fujiwara (Midorigaoka Hospital) for Japanese sample collection; R Akuhata, N Aupouri (Ngati Porou Hauora Charitable Trust) and J H Hindmarsh (Research Coordinator, Ngati Porou Hauora Charitable Trust) for NZ Māori (Eastern Polynesian) sample collection from the Rohe (area) of Ngati Porou iwi; Y Oka, S Kanda and C Umatani (the University of Tokyo) for their biomaterial support and technical advice in the oocyte experiment; J Boocock (University of Otago) for eQTL analysis; H Motohashi (Tohoku University), N Hamajima, M Naito (Nagoya University) and H Tanaka (Aichi Cancer Center Research Institute) for helpful discussion.

**Collaborators** Members of the Eurogout Consortium are: Mariano Andres (Sección de Reumatología, Hospital General Universitario de Alicante, Alicante), Leo A Joosten (Department of Internal Medicine and Radboud Institute of Molecular Life Science, Radboud University Medical Center, The Netherlands), Matthijs Janssen (Department of Rheumatology, Rijnstate Hospital, The Netherlands), Tim L Jansen (Department of IQ HealthCare, VieCuri Medical Centre, The Netherlands), Frederic Lioté (INSERM, UMR-S 1132, Hospital Lariboisière, Paris, University Paris Diderot (UFR de Médecine), Sorbonne Paris Cité, Paris), Timothy R Radstake (Department of Rheumatology and Clinical Immunology, Laboratory of Translational Immunology, University Medical Centre Utrecht, The Netherlands, and Department of Immunology, University Medical Centre Utrecht, The Netherlands), Philip L Riches (Rheumatic Diseases Unit, Institute of Genetics and Molecular Medicine, University of Edinburgh, Edinburgh), Alexander So (DAL, Service of Rheumatology, Laboratory of Rheumatology, University of Lausanne, CHUV, Nestlé), Anne-Kathrin Tausche (Department of Rheumatology, University Clinic 'Carl-Gustav-Carus', Dresden).

**Contributors** AN, HNakaoka, KY, MS, AS, YT, TT, NS, TRM and HM conceived and designed this study. Y Sakurai, HS, II, ATakahashi and MKubo assisted with research design. AN, HNakaoka, MS, Yokada, YKamatani, THigashino, YKawamura, ATokumasu, KO, TK, KW, BS, KP, ATakahashi, MKubo, HOoyama, TS, KIchida and HM collected and analyzed clinical data of Japanese participants. AS, LKS, ND, Eurogout Consortium and TRM collected and analyzed clinical data of replication participants. AN, KY, MS, AS, YShirahama, SS, THigashino, YKawamura, HOgata, MKawaguchi, ID, NS, TRM and HM performed genetic analysis. AN, HNakaoka, MS,



AS, Yokada, YKamatani, TN, HNAkashima, ATakahashi, TRM and HM performed statistical analysis. AN, YT, TT, KInoue, TYasujima, HY, HS and HM performed functional analysis and localization analysis. AN, HNAkaoka, KY, MS, AS, YT, YOKada, YKamatani, TN, TT, KInoue, TYasujima, HY, YOhkawa, NS, TRM and HM analyzed data. ID, TI, MH, SF, TYokoo, THosoya, KIchida provided intellectual input and assisted with the preparation of the manuscript. AN, HNAkaoka, KY, MS, AS, YT, NS, TRM and HM wrote the manuscript.

**Funding** This study was supported by grants from the Ministry of Education, Culture, Sports, Science and Technology (MEXT) of Japan, including MEXT KAKENHI (Nos. 25293145 and 15K15227), Grants-in-Aid for Scientific Research on Priority Areas (No. 17015018) and Innovative Areas (Nos. 22150001 and 22150002) and a JSPS KAKENHI Grant (Nos. 16H06277 and 16H06279), the Ministry of Health, Labour and Welfare of Japan, the Ministry of Defense of Japan, the Japan Society for the Promotion of Science, the Kawano Masanori Memorial Foundation for Promotion of Pediatrics, the Gout Research Foundation of Japan and the Health Research Council of New Zealand. The BioBank Japan Project was supported by MEXT of Japan.

**Competing interests** TT, KIchida, NS and HM have a patent pending based on the work reported in this paper.

**Patient consent** Obtained.

**Ethics approval** This study was approved by the institutional ethical committees, and written consent was obtained from all of its participants. All involved procedures were performed in accordance with the Declaration of Helsinki.

**Provenance and peer review** Not commissioned; externally peer reviewed.

**Open Access** This is an Open Access article distributed in accordance with the Creative Commons Attribution Non Commercial (CC BY-NC 4.0) license, which permits others to distribute, remix, adapt, build upon this work non-commercially, and license their derivative works on different terms, provided the original work is properly cited and the use is non-commercial. See: <http://creativecommons.org/licenses/by-nc/4.0/>

## REFERENCES

- Smith E, Hoy D, Cross M, *et al.* The global burden of gout: estimates from the Global Burden of Disease 2010 study. *Ann Rheum Dis* 2014;73:1470–6.
- Ichida K, Matsuo H, Takada T, *et al.* Decreased extra-renal urate excretion is a common cause of hyperuricemia. *Nat Commun* 2012;3:764.
- Wortmann RL. Disorders of purine and pyrimidine metabolism. In: Fauci AS, Braunwald E, Kasper D, *et al.*, eds. *Harrison's principles of internal medicine*. 17th edn. New York, NY: McGraw-Hill, 2008:2444–9.
- Matsuo H, Nakayama A, Sakiyama M, *et al.* ABCG2 dysfunction causes hyperuricemia due to both renal urate underexcretion and renal urate overload. *Sci Rep* 2014;4:3755.
- Woodward OM, Köttgen A, Coresh J, *et al.* Identification of a urate transporter, ABCG2, with a common functional polymorphism causing gout. *Proc Natl Acad Sci USA* 2009;106:10338–42.
- Matsuo H, Takada T, Ichida K, *et al.* Common defects of ABCG2, a high-capacity urate exporter, cause gout: a function-based genetic analysis in a Japanese population. *Sci Transl Med* 2009;1:5ra11.
- Matsuo H, Ichida K, Takada T, *et al.* Common dysfunctional variants in ABCG2 are a major cause of early-onset gout. *Sci Rep* 2013;3:2014.
- Nakayama A, Matsuo H, Nakaoka H, *et al.* Common dysfunctional variants of ABCG2 have stronger impact on hyperuricemia progression than typical environmental risk factors. *Sci Rep* 2014;4:5227.
- Phipps-Green AJ, Merriman ME, Topless R, *et al.* Twenty-eight loci that influence serum urate levels: analysis of association with gout. *Ann Rheum Dis* 2016;75:124–30.
- Matsuo H, Yamamoto K, Nakaoka H, *et al.* Genome-wide association study of clinically defined gout identifies multiple risk loci and its association with clinical subtypes. *Ann Rheum Dis* 2016;75:652–9.
- Nakamura T, Shi D, Tzetis M, *et al.* Meta-analysis of association between the ASPN D-repeat and osteoarthritis. *Hum Mol Genet* 2007;16:1676–81.
- Kamatani Y, Matsuda K, Okada Y, *et al.* Genome-wide association study of hematological and biochemical traits in a Japanese population. *Nat Genet* 2010;42:210–15.
- Rasheed H, Phipps-Green A, Topless R, *et al.* Association of the lipoprotein receptor-related protein 2 gene with gout and non-additive interaction with alcohol consumption. *Arthritis Res Ther* 2013;15:R177.
- Lioté F, Merriman T, Nasi S, *et al.* Workshop report: 4th European crystal network meeting. *Arthritis Res Ther* 2013;15:304.
- DerSimonian R, Laird N. Meta-analysis in clinical trials. *Control Clin Trials* 1986;7:177–88.
- Chiba T, Matsuo H, Kawamura Y, *et al.* NPT1/SLC17A1 is a renal urate exporter in humans and its common gain-of-function variant decreases the risk of renal underexcretion gout. *Control Clin Trials* 2015;67:281–7.
- Matsuo H, Kanai Y, Kim JY, *et al.* Identification of a novel Na<sup>+</sup>-independent acidic amino acid transporter with structural similarity to the member of a heterodimeric amino acid transporter family associated with unknown heavy chains. *J Biol Chem* 2002;277:21017–26.
- Matsuo H, Tsukada S, Nakata T, *et al.* Expression of a system L neutral amino acid transporter at the blood-brain barrier. *Neuroreport* 2000;11:3507–11.
- Matsuo H, Kanai Y, Tokunaga M, *et al.* High affinity D- and L-serine transporter Asc-1: cloning and dendritic localization in the rat cerebral and cerebellar cortices. *Neurosci Lett* 2004;358:123–6.
- Hollis-Moffatt JE, Phipps-Green AJ, Chapman B, *et al.* The renal urate transporter SLC17A1 locus: confirmation of association with gout. *Arthritis Res Ther* 2012;14:R92.
- Diodato D, Melchionda L, Haack TB, *et al.* VARS2 and TARS2 mutations in patients with mitochondrial encephalomyopathies. *Hum Mutat* 2014;35:983–9.
- Köttgen A, Albrecht E, Teumer A, *et al.* Genome-wide association analyses identify 18 new loci associated with serum urate concentrations. *Nat Genet* 2013;45:145–54.
- Goytain A, Hines RM, Quamme GA. Functional characterization of NIPA2, a selective Mg<sup>2+</sup> transporter. *Am J Physiol, Cell Physiol* 2008;295:C944–53.
- Li C, Li Z, Liu S, *et al.* Genome-wide association analysis identifies three new risk loci for gout arthritis in Han Chinese. *Nat Commun* 2015;6:7041.
- Enomoto A, Kimura H, Chairoungdua A, *et al.* Molecular identification of a renal urate anion exchanger that regulates blood urate levels. *Nature* 2002;417:447–52.
- Kolz M, Johnson T, Sanna S, *et al.* Meta-analysis of 28,141 individuals identifies common variants within five new loci that influence uric acid concentrations. *PLoS Genet* 2009;5:e1000504.
- Okada Y, Sim X, Go MJ, *et al.* Meta-analysis identifies multiple loci associated with kidney function-related traits in east Asian populations. *Nat Genet* 2012;44:904–9.
- Matsuo H, Chiba T, Nagamori S, *et al.* Mutations in glucose transporter 9 gene SLC2A9 cause renal hypouricemia. *Am J Hum Genet* 2008;83:744–51.
- Wang YL, Zeng C, Wei J, *et al.* Association between dietary magnesium intake and hyperuricemia. *PLoS ONE* 2015;10:e0141079.
- Zeng C, Wang YL, Wei J, *et al.* Association between low serum magnesium concentration and hyperuricemia. *Magnes Res* 2015;28:56–63.
- Kuroczycka-Saniutycz E, Porowski T, Protas PT, *et al.* Does obesity or hyperuricemia influence lithogenic risk profile in children with urolithiasis? *Pediatr Nephrol* 2015;30:797–803.