

Research Article

Diagnostic Value of Neutrophil-to-Lymphocyte Ratio and Platelet-to-Lymphocyte Ratio in Crohn's Disease

Jue-Rong Feng,^{1,2} Xiao Qiu,^{1,2} Fan Wang,^{1,2} Peng-Fei Chen,^{1,2} Qian Gao,^{1,2} Ya-Nan Peng,^{1,2} Xue Lin,^{1,2} Qing Liu,^{1,2} Jing Liu,^{1,2} Qiu Zhao,^{1,2} and Jin Li^{1,2}

¹Department of Gastroenterology, Zhongnan Hospital of Wuhan University, Wuhan, China

²Hubei Clinical Center & Key Laboratory of Intestinal & Colorectal Diseases, Wuhan, China

Correspondence should be addressed to Qiu Zhao; zhaoqiu9090@126.com and Jin Li; lili234510@126.com

Received 27 March 2017; Revised 16 May 2017; Accepted 31 May 2017; Published 17 July 2017

Academic Editor: Andrew S. Day

Copyright © 2017 Jue-Rong Feng et al. This is an open access article distributed under the Creative Commons Attribution License, which permits unrestricted use, distribution, and reproduction in any medium, provided the original work is properly cited.

The aim of this study is to investigate the diagnostic efficacy of neutrophil-to-lymphocyte ratio (NLR), neutrophil-to-monocyte ratio (NMR), lymphocyte-to-monocyte ratio (LMR), and platelet-to-lymphocyte ratio (PLR) in patients with Crohn's disease (CD) and non-CD controls. These ratios were all derived from complete blood counts. Two hundred and six participants including CD inpatients and non-CD controls were retrospectively enrolled. We found statistically higher NLR and PLR and lower LMR in CD patients than in non-CD controls (all $P < 0.01$). However, NMR was not different between the two groups ($P = 0.18$). In addition, NLR, PLR, and LMR were associated with CRP and ESR. Optimal cutoffs for NLR and PLR were 2.72 (sensitivity: 68.3%, specificity: 75.9%, and overall accuracy: 70.1%) and 132.88 (sensitivity: 76.7%, specificity: 84.8%, and overall accuracy: 80.8%), respectively. In conclusion, the NLR and PLR might be effective, readily available, and low-cost biomarkers for differentiating CD patients from non-CD controls.

1. Introduction

Crohn's disease (CD) is characterized by chronic, relapsing/remitting inflammation in any section of the gastrointestinal tract [1]. The aetiology of CD is not yet fully understood, but many studies have shown an increase in the prevalence of CD in many countries around the world [2, 3].

Biomarkers in CD can aid in the diagnosis and monitoring of disease activity in clinical practice. Although endoscopy continues to be the gold standard for diagnosis of CD and monitoring disease activity, it is an invasive and inconvenient examination and it may not be appropriate in the setting of severe disease. However, to date, no ideal biomarker has been identified to assess and manage CD. For example, despite the fact that erythrocyte sedimentation rate (ESR) and C-reactive protein (CRP) can be altered in active CD, they are nonspecific markers that can be altered in various inflammatory processes [4–6]. Fecal calprotectin (FC) and lactoferrin can indicate disease activity and predict relapse of CD, but a further endoscopy

was needed for evaluation [7–10]. In addition, fecal S100A12, a calcium-binding calgranulin protein, can distinguish CD from irritable bowel syndrome [11]. Despite the data demonstrating the value of these biomarkers, none of them can replace the necessity to undergo endoscopy to assess the intestinal condition.

Complete blood counts including leukocyte subtypes are commonly examined during admission of CD patients. The neutrophil-to-lymphocyte ratio (NLR), neutrophil-to-monocyte ratio (NMR), lymphocyte-to-monocyte ratio (LMR), and platelet-to-lymphocyte (PLR) are also easily calculated from the absolute neutrophil count, the absolute lymphocyte count, the absolute monocyte count, and the absolute platelet count, which can be obtained from just a single complete blood count test. The NLR as a novel biomarker was used to diagnose ulcerative colitis (UC) and predict a patient's overall disease course [12–15]. The other ratios have not yet been evaluated in the context of CD [16]. Therefore, the aim of this study was to

TABLE 1: General characteristics of 103 patients with Crohn's disease (CD) and 103 healthy control subjects.

	CD group	Control group	<i>P</i> value	Normal range
Age (year)	31.84 ± 11.98	35.06 ± 12.28	0.06	—
Gender (F/M)	31/72	22/65	0.46	—
WBC	5.79 (2.79–22.43)	6.34 (2.34–9.86)	0.17	4~10 × 10 ⁹
Neutrophil	3.49 (0.92–21.55)	3.69 (1.31–6.50)	0.79	1.2~6.8 × 10 ⁹
Lymphocyte	1.44 ± 0.74	1.83 ± 0.56	<0.01	0.8~4.0 × 10 ⁹
Monocyte	0.48 (0.19–3.14)	0.45 (0.14–7.2)	0.22	0.3~0.8 × 10 ⁹
Platelet	237.00 (112–602)	168.00 (36–317)	<0.01	100–300 × 10 ⁹
Neutrophil-to-lymphocyte ratio	2.95 (0.23–46.85)	2.33 (0.95–10.17)	<0.01	—
Neutrophil-to-monocyte ratio	7.56 (1–546)	8.25 (0.62–18.73)	0.18	—
Lymphocyte-to-monocyte ratio	3.02 ± 1.91	4.1 ± 1.31	<0.01	—
Platelet-to-lymphocyte ratio	171.61 (54.44–850)	93.49 (34.23–500)	<0.01	—

Values are median (minimum, maximum) if not normally distributed. Values are mean ± SD if normally distributed. The italics indicates comparisons with significant differences.

assess the utility of NLR, NMR, PLR, and LMR in patients with CD in comparison to healthy controls without CD.

2. Material and Methods

2.1. Participants. This retrospective study reviewed the data from inpatients with active CD and healthy controls from electronic medical records (EMR) in the Department of Gastroenterology, Zhongnan Hospital of Wuhan University, between May 2014 and June 2016. Non-CD controls, who received annual health checkups during the study period, were age- and gender-matched with one CD patient randomly selected from EMR. The diagnosis of CD patients was based on standard clinical, radiological, endoscopic, and histological records [17]. The criteria for inclusion in the study group were as follows: (1) subjects underwent blood sampling collection for complete blood counts at the time of admission and prior to the commencement of any therapy and (2) patients were newly diagnosed with CD. Patients were excluded if they had an acute infectious disease or other underlying diseases (such as colorectal cancer, hepatocellular cancer, and multiple myeloma) that could influence the ratios of interest.

Patients' age, gender, and other medical history were all reviewed and collected from EMR. The detailed results of complete blood count testing were obtained for both groups. The NLR and PLR were calculated by dividing the absolute neutrophil count by the absolute lymphocyte count and dividing the absolute platelet count by the absolute lymphocyte count, respectively. In addition, LMR and NMR were calculated by dividing the absolute lymphocyte count by the absolute monocyte count and the absolute neutrophil count by the absolute monocyte count, respectively.

2.2. Statistical Analysis. Comparisons between groups were performed using the Student *t*-test or Mann–Whitney non-parametric tests according to whether it met normal distribution. Data were verified by the Student *t*-test for normal

TABLE 2: Spearman's correlation coefficients of neutrophil-to-lymphocyte ratio (NLR) and platelet-to-lymphocyte ratio (PLR) with other inflammatory markers in Crohn's disease (CD) patients.

	NLR		PLR		LMR	
	<i>r</i>	<i>P</i>	<i>r</i>	<i>P</i>	<i>r</i>	<i>P</i>
CRP	0.43	<0.01	0.29	<0.01	-0.39	<0.01
ESR	0.39	<0.01	0.57	<0.01	-0.33	<0.01

The italics indicates correlations with significant differences.

distribution. Then, Spearman's correlation analyses were conducted between the ratios and inflammatory biomarkers such as CRP and ESR. Receiver operating characteristic (ROC) curve analyses were conducted to assess the performance of each biomarker in differentiating CD from non-CD controls. The ROCs were produced by plotting the sensitivity value against the false-positive rate (1 – specificity). Accuracy of each biomarker was measured by the area under the ROC curve. The predictive value of each ratio was assessed by calculating the area under the curve (AUC) and estimated the optimal cutoff value based on the maximum Youden index. The overall accuracy was also calculated by dividing the sum of true-positive and true-negative tests by all tests. These analyses were conducted using SPSS 17.0 software (SPSS Inc., Chicago, IL) by considering a two-tailed *P* < 0.05 significantly different.

3. Results

3.1. Subject Characteristics. A total of 527 participants including 207 CD inpatients and 320 non-CD controls were reviewed in EMR during the study period. After consideration of the inclusion and exclusion criteria, 103 participants in each group were identified (Table 1). There was no significant difference in gender and age between the CD group and the control group (all *P* > 0.05).

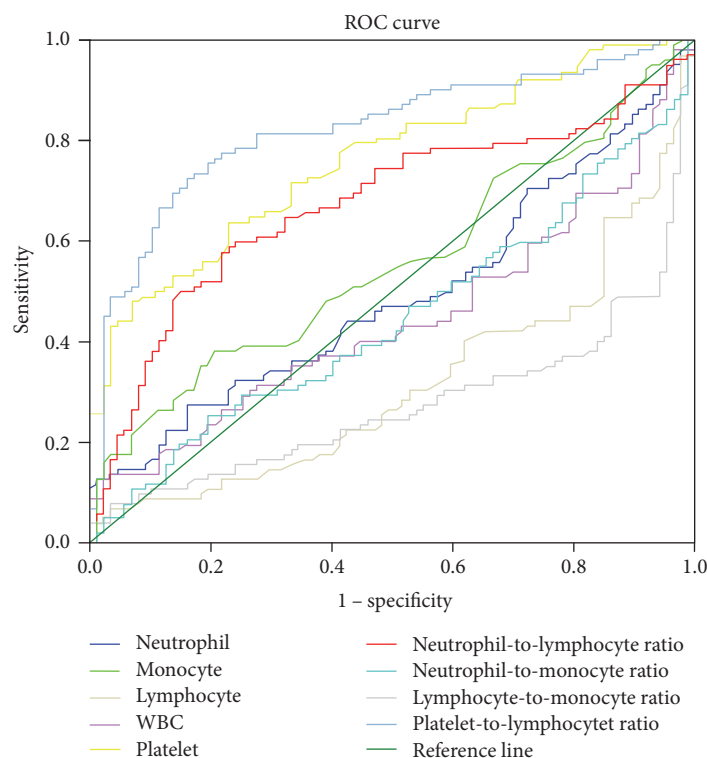


FIGURE 1: Receiver operating characteristic (ROC) curve of multiple blood biomarkers in 103 patients with Crohn's disease and 103 healthy control subjects.

TABLE 3: Accuracy of neutrophil-to-lymphocyte ratio (NLR) and other inflammatory markers in differentiating Crohn's disease (CD) patients from healthy controls.

Parameters	AUCs	Cutoffs	CD group versus control group				Overall accuracy (%)
			Sensitivity (%)	Specificity (%)	PPV (%)	NPV (%)	
Lymphocyte	0.28	2.69	5.00%	97.50%	66.67%	50.65%	51.25%
Platelet	0.77	242.50	53.30%	91.10%	85.69%	66.11%	72.20%
Neutrophil-to-lymphocyte ratio	<i>0.74</i>	<i>2.72</i>	<i>68.30%</i>	<i>75.90%</i>	<i>73.92%</i>	<i>70.54%</i>	<i>72.10%</i>
Neutrophil-to-monocyte ratio	0.47	10.61	31.70%	82.30%	64.17%	54.65%	57.00%
Lymphocyte-to-monocyte ratio	0.25	6.57	6.70%	97.50%	72.83%	51.10%	52.10%
Platelet-to-lymphocyte ratio	<i>0.86</i>	<i>132.88</i>	<i>76.70%</i>	<i>84.80%</i>	<i>83.46%</i>	<i>78.45%</i>	<i>80.75%</i>

The italics indicates comparisons with significant differences. PPV: positive predictive value; NPV: negative predictive value.

3.2. Comparisons and Correlations of Ratios between the Two Groups. There were not any differences between NMR, WBC, and neutrophil or monocyte between the both groups ($P = 0.18$; 0.17 , 0.79 , and 0.22 , resp.). The NLRs of CD patients and non-CD controls were 2.95 and 2.33 , respectively ($P < 0.01$). The other ratios (PLR and LMR) were markedly elevated in CD patients compared to non-CD controls (Table 1).

Spearman's correlation analyses indicated positive correlations between NLR and CRP ($r = 0.43$, $P < 0.01$) and ESR ($r = 0.39$, $P < 0.01$) in CD patients. In addition, PLR was positively correlated with CRP ($r = 0.29$, $P < 0.01$) and ESR ($r = 0.57$, $P < 0.01$) in CD patients. In contrast, LMR

was negatively related to CRP ($r = -0.39$, $P < 0.01$) and ESR ($r = -0.33$, $P < 0.01$) in CD patients (Table 2).

3.3. Optimal Cutoffs of NLR and PLR. The ROC analyses were performed to establish cutoff points for NLR, LMR, and PLR. The results suggested that NLR (AUC: 0.74 , 95%CI: 0.65 – 0.83) and PLR (AUC: 0.86 , 95%CI: 0.80 – 0.92) were useful in differentiating the patients with CD from controls (Figure 1 and Table 3). For differentiating CD patients from non-CD controls, optimal cutoffs of NLR and PLR based on the largest Youden index were 2.72 (sensitivity: 68.3% , specificity: 75.9% , and overall accuracy: 70.1%) and 132.88 (sensitivity: 76.7% , specificity: 84.8% , and overall accuracy:

80.8%), respectively. However, the AUC of LMR was 0.25, indicating low test utility (Table 3).

4. Discussion

In this retrospective study, data mining was performed for more clinical value in the complete blood count test, which is one of the most frequently requested tests in patients with CD. Our findings revealed that elevated NLR and PLR and decreased LMR, which were derived from complete blood counts, were significantly different between CD patients and non-CD controls. Furthermore, these ratios correlated strongly with CRP and ESR. ROC analyses revealed that a cutoff of 2.72 for NLR and a cutoff of 132.88 for PLR had high sensitivity, specificity, and predictive values to differentiate CD patients from non-CD controls. In addition, total WBC, neutrophil counts, and monocyte counts were not significantly different between the two groups, which indicated that NLR and PLR were more sensitive and meaningful than neutrophil and monocyte counts alone.

To our knowledge, WBC, CRP, and ESR are the most commonly used inflammatory indicators in routine clinical practice for CD patients. These parameters can change with the degree of the inflammatory status of CD. Both NLR and PLR are positively correlated with ESR and CRP in the current study. These two ratios are simple and inexpensive examinations of a systemic inflammatory biomarker that correlates with prognosis in distinct diseases. The NLR has been generally investigated in inflammatory and neoplastic diseases, such as ST-segment elevation myocardial infarction (STEMI), ulcerative colitis, colorectal cancer, hepatocellular cancer, multiple myeloma, and type 2 diabetes, as a prognostic index [14, 18–23]. Therefore, CD patient with an already complicated disease was excluded in advance to avoid this as a confounding factor. In addition to NLR, PLR has been reported as a novel inflammatory biomarker of promise for screening and predicting prognosis for acute pulmonary embolism, psoriasis, ovarian cancer, and colorectal cancer [24–27].

To date, only two studies have assessed the value of NLR in CD. One study showed that CD patients with high NLR before infliximab therapy had a lower NLR after 52 weeks of therapy compared with controls. The authors suggested that NLR may be a useful predictor of response to infliximab and could be utilized to optimize the infliximab dosing schedule [28]. Another study verified that elevated NLR could differentiate CD patients from non-CD controls [16], which was in line with our findings. The elevated NLR and PLR stem from both a reduction in the lymphocyte count and an increase in the neutrophil count and the platelet count. Our results showed similar findings that the quantity of lymphocyte was reduced in CD [29]. Elevated leukocytes including neutrophils reflect systemic inflammation and contribute to innate and adaptive immune responses [30]. During infectious and noninfectious inflammatory disorders, neutrophils are generated in the bone marrow and migrate to the inflamed tissues following the release of proinflammatory cytokines and chemokines. The study by Catarzi et al. [31] found that the apoptosis of polymorphonuclear neutrophils

(PMN) was delayed and that the life of circulating PMN was prolonged, which can be responsible for their excessive migration to inflamed intestinal sites [31]. Excessive activation of leukocytes and aberrant innate or adaptive immunity are known to be involved in the pathogenesis of CD [32].

The limitations of this study should be pointed out. The study utilized a retrospective case-control design with patients diagnosed with CD matched to healthy control subjects. ESR and CRP data were not available in the control subjects, as these tests were not part in routine health checks.

5. Conclusion

A comprehensive evaluation of neutrophil, lymphocyte, and monocyte and their ratios from complete blood counts was assessed in CD patients. NLR and PLR appear to be promising inflammatory biomarkers in CD. These biomarkers have the advantage of being routinely available, noninvasive, and low-cost. Future prospective studies are now required to further evaluate the utility of these biomarkers in patients with CD.

Conflicts of Interest

All authors declare that they have no competing interests.

Authors' Contributions

Jue-Rong Feng, Xiao Qiu, Qiu Zhao, and Jin Li were responsible for the study concepts and study design. Qian Gao, Ya-Nan Peng, Qing Liu, and Xue Lin were responsible for the data collection. Jing Liu, Fan Wang, and Peng-Fei Chen were responsible for the data analysis/statistical analysis. Jue-Rong Feng and Xiao Qiu were responsible for article writing. Jue-Rong Feng and Jin Li were responsible for the manuscript revision/review. All authors read and approved the manuscript.

References

- [1] D. C. Baumgart and W. J. Sandborn, "Crohn's disease," *Lancet*, vol. 380, pp. 1590–1605, 2012.
- [2] R. B. Sartor, "Mechanisms of disease: pathogenesis of Crohn's disease and ulcerative colitis," *Nature Clinical Practice Gastroenterology & Hepatology*, vol. 3, pp. 390–407, 2006.
- [3] M. Economou and G. Pappas, "New global map of Crohn's disease: genetic environmental and socioeconomic correlations," *Inflammatory Bowel Diseases*, vol. 14, pp. 709–720, 2008.
- [4] S. B. Menees, C. Powell, J. Kurlander, A. Goel, and W. D. Chey, "A meta-analysis of the utility of C-reactive protein, erythrocyte sedimentation rate, fecal calprotectin, and fecal lactoferrin to exclude inflammatory bowel disease in adults with IBS," *The American Journal of Gastroenterology*, vol. 110, pp. 444–454, 2015.
- [5] M. Agassandian, G. V. Shurin, Y. Ma, and M. R. Shurin, "C-reactive protein and lung diseases," *The International Journal of Biochemistry & Cell Biology*, vol. 53, pp. 77–88, 2014.
- [6] S. Kaptoge, E. Di Angelantonio, L. Pennells et al., "C-reactive protein, fibrinogen, and cardiovascular disease prediction,"

- The New England Journal of Medicine*, vol. 367, pp. 1310–1320, 2012.
- [7] T. Sipponen, P. Karkkainen, E. Savilahti et al., “Correlation of faecal calprotectin and lactoferrin with an endoscopic score for Crohn’s disease and histological findings,” *Alimentary Pharmacology & Therapeutics*, vol. 28, pp. 1221–1229, 2008.
 - [8] T. Sipponen, E. Savilahti, K. L. Kolho, H. Nuutinen, U. Turunen, and M. Färkkilä, “Crohn’s disease activity assessed by fecal calprotectin and lactoferrin: correlation with Crohn’s disease activity index and endoscopic findings,” *Inflammatory Bowel Diseases*, vol. 14, pp. 40–46, 2008.
 - [9] T. Sipponen, E. Savilahti, P. Karkkainen et al., “Fecal calprotectin, lactoferrin, and endoscopic disease activity in monitoring anti-TNF-alpha therapy for Crohn’s disease,” *Inflammatory Bowel Diseases*, vol. 14, pp. 1392–1398, 2008.
 - [10] S. Buderus, J. Boone, D. Lyster, and M. J. Lentze, “Fecal lactoferrin: a new parameter to monitor infliximab therapy,” *Digestive Diseases and Sciences*, vol. 49, pp. 1036–1039, 2004.
 - [11] T. Kaiser, J. Langhorst, H. Wittkowski et al., “Faecal S100A12 as a non-invasive marker distinguishing inflammatory bowel disease from irritable bowel syndrome,” *Gut*, vol. 56, pp. 1706–1713, 2007.
 - [12] S. Torun, B. D. Tunc, B. Suvak et al., “Assessment of neutrophil-lymphocyte ratio in ulcerative colitis: a promising marker in predicting disease severity,” *Clinics and Research in Hepatology and Gastroenterology*, vol. 36, pp. 491–497, 2012.
 - [13] M. Celikbilek, S. Dogan, O. Ozbakir et al., “Neutrophil-lymphocyte ratio as a predictor of disease severity in ulcerative colitis,” *Journal of Clinical Laboratory Analysis*, vol. 27, pp. 72–76, 2013.
 - [14] C. E. Cherfane, L. Gessel, D. Cirillo, M. B. Zimmerman, and S. Polyak, “Monocytosis and a low lymphocyte to monocyte ratio are effective biomarkers of ulcerative colitis disease activity,” *Inflammatory Bowel Diseases*, vol. 21, pp. 1769–1775, 2015.
 - [15] A. K. Demir, A. Demirtas, S. U. Kaya et al., “The relationship between the neutrophil-lymphocyte ratio and disease activity in patients with ulcerative colitis,” *The Kaohsiung Journal of Medical Sciences*, vol. 31, pp. 585–590, 2015.
 - [16] S. Q. Gao, L. D. Huang, R. J. Dai, D. D. Chen, W. J. Hu, and Y. F. Shan, “Neutrophil-lymphocyte ratio: a controversial marker in predicting Crohn’s disease severity,” *International Journal of Clinical and Experimental Pathology*, vol. 8, pp. 14779–14785, 2015.
 - [17] F. Gomollon, A. Dignass, V. Annese et al., “3rd European evidence-based consensus on the diagnosis and management of Crohn’s disease 2016: part 1: diagnosis and medical management,” *Journal of Crohn’s & Colitis*, vol. 11, pp. 3–25, 2017.
 - [18] M. Yaman, U. Arslan, O. Beton, H. E. Pamukcu, and O. Dogdu, “Early and late aortic propagation velocity values in STEMI patients after successful primary PCI and their relationship with neutrophil to lymphocyte ratio,” *European Review for Medical and Pharmacological Sciences*, vol. 20, pp. 912–918, 2016.
 - [19] T. Grenader, S. Nash, R. Adams et al., “Derived neutrophil lymphocyte ratio is predictive of survival from intermittent therapy in advanced colorectal cancer: a post hoc analysis of the MRC COIN study,” *British Journal of Cancer*, vol. 114, pp. 612–615, 2016.
 - [20] A. Meisel, S. von Felten, D. R. Vogt et al., “Severe neutropenia during cabazitaxel treatment is associated with survival benefit in men with metastatic castration-resistant prostate cancer (mCRPC): a post-hoc analysis of the TROPIC phase III trial,” *European Journal of Cancer*, vol. 56, pp. 93–100, 2016.
 - [21] R. Liao, Z. W. Tang, D. W. Li, S. Q. Luo, P. Huang, and C. Y. Du, “Preoperative neutrophil-to-lymphocyte ratio predicts recurrence of patients with single-nodule small hepatocellular carcinoma following curative resection: a retrospective report,” *World Journal of Surgical Oncology*, vol. 13, p. 265, 2015.
 - [22] A. Romano, N. L. Parrinello, M. L. Consoli et al., “Neutrophil to lymphocyte ratio (NLR) improves the risk assessment of ISS staging in newly diagnosed MM patients treated upfront with novel agents,” *Annals of Hematology*, vol. 94, pp. 1875–1883, 2015.
 - [23] X. Guo, S. Zhang, Q. Zhang et al., “Neutrophil:lymphocyte ratio is positively related to type 2 diabetes in a large-scale adult population: a Tianjin Chronic Low-Grade Systemic Inflammation and Health cohort study,” *European Journal of Endocrinology*, vol. 173, pp. 217–225, 2015.
 - [24] Y. Ma, Y. Mao, X. He, Y. Sun, S. Huang, and J. Qiu, “The values of neutrophil to lymphocyte ratio and platelet to lymphocyte ratio in predicting 30 day mortality in patients with acute pulmonary embolism,” *BMC Cardiovascular Disorders*, vol. 16, p. 123, 2016.
 - [25] A. Prodromidou, P. Andreakos, C. Kazakos, D. E. Vlachos, D. Perrea, and V. Pergialiotis, “The diagnostic efficacy of platelet-to-lymphocyte ratio and neutrophil-to-lymphocyte ratio in ovarian cancer,” *Inflammation Research*, vol. 66, pp. 467–475, 2017.
 - [26] N. Chen, W. Li, K. Huang et al., “Increased platelet-lymphocyte ratio closely relates to inferior clinical features and worse long-term survival in both resected and metastatic colorectal cancer: an updated systematic review and meta-analysis of 24 studies,” *Oncotarget*, vol. 8, pp. 32356–32369, 2017.
 - [27] A. Ereğ Toprak, E. Ozlu, T. K. Uzuncakmak, E. Yalcinkaya, S. Sogut, and A. S. Karadag, “Neutrophil/Lymphocyte ratio, serum endocan, and nesfatin-1 levels in patients with psoriasis vulgaris undergoing phototherapy treatment,” *Medical Science Monitor*, vol. 22, pp. 1232–1237, 2016.
 - [28] M. K. Włodarczyk, A. E. Sobolewska, K. Stec-Michalska, J. J. Fichna, and M. E. Wisniewska-Jarosinska, “Neutrophil-lymphocyte ratio in Crohn’s disease patients predicts sustained response to infliximab 52-week therapy,” *Journal of Gastrointestinal and Liver Diseases*, vol. 24, pp. 127–128, 2015.
 - [29] H. B. Lee, J. H. Kim, C. Y. Yim, D. G. Kim, and D. S. Ahn, “Differences in immunophenotyping of mucosal lymphocytes between ulcerative colitis and Crohn’s disease,” *The Korean Journal of Internal Medicine*, vol. 12, pp. 7–15, 1997.
 - [30] A. W. Segal, “How neutrophils kill microbes,” *Annual Review of Immunology*, vol. 23, pp. 197–223, 2005.
 - [31] S. Catarzi, T. Marcucci, L. Papucci et al., “Apoptosis and Bax, Bcl-2, Mcl-1 expression in neutrophils of Crohn’s disease patients,” *Inflammatory Bowel Diseases*, vol. 14, pp. 819–825, 2008.
 - [32] T. T. MacDonald, I. Monteleone, M. C. Fantini, and G. Monteleone, “Regulation of homeostasis and inflammation in the intestine,” *Gastroenterology*, vol. 140, pp. 1768–1775, 2011.