



Published in final edited form as:

Int J Sci Eng Res. 2017 July ; 8(7): 502–506.

Melatonin Modulates Prohibitin and Cytoskeleton in the Retinal Pigment Epithelium

Srinivas R. Sripathi^{1,2}, Cameron L. Prigge^{1,3}, Beth Elledge¹, Weilue He⁴, Johnpaul Offor⁵, Diana R. Gutsaeva⁶, and Wan Jin Jahng^{7,*}

¹Department of Biological Sciences, Michigan Technological University, Houghton, MI, USA

²Department of Ophthalmology, Wilmer Eye Institute, The Johns Hopkins University School of Medicine, Baltimore, MD, USA

³Department of Neurobiology, Duke University, North Carolina, USA

⁴Department of Biomedical Engineering, Michigan Technological University, Houghton, MI, USA

⁵Department of Natural and Environmental Sciences, American University of Nigeria, Yola, Nigeria

⁶Department of Ophtalmology, Augusta University, Augusta, GA, USA

⁷Department of Petroleum Chemistry, American University of Nigeria, Yola, Nigeria

Abstract

The retinal pigment epithelium (RPE) plays imperative roles in normal retinal function by photoreceptor protection from light and phagocytosis of rod and cone outer segments during disc shedding. Melatonin is the free radical scavenger and circadian determinant to protect the RPE and retina from oxidative stress and regulate the circadian clock. The current study tested the hypothesis whether melatonin could affect cytoskeletal structure within RPE. Our Western blot analysis demonstrated that melatonin treatment up-regulated prohibitin 3-fold compared to control. β -tubulin levels were also up-regulated by melatonin but to a lesser extent. Initial cell shape of ARPE-19 is epitheloid, however, after 30-minute treatment with melatonin, RPE cells undergo a morphological change to a fusiform shape with spindle outgrowth. Cells return to epitheloid shape after 12 hours in untreated medium. Melatonin treated cells showed increased and dissimilar distribution of prohibitin and β -tubulin compared to non-treated cells, thus altered cytoskeletal and mitochondrial structure in the RPE. Our data implies that melatonin may play a protective role under oxidative stress, which is shown by the marker prohibitin in terms of increased expression and nuclear distribution. During the protective process, cells change their morphology. Our results suggest that melatonin treatment could be beneficial to protect mitochondria under oxidative stress and treat certain ocular diseases, including age-related macular degeneration.

*Corresponding to Wan Jin Jahng, Retina Proteomics Laboratory and Organic Chemistry Laboratory, Department of Petroleum Chemistry, American University of Nigeria, Yola, Nigeria, Tel +234 805 550 1032. wan.jahng@aun.edu.ng.

Index Terms

age-related diseases; circadian rhythms; cytoskeleton structure; melatonin; photoreceptors; prohibitin; β -tubulin; mitochondria; retinal pigment epithelium

1 INTRODUCTION

The photoreceptor cells are very effective in trapping photons that initiate the visual transduction, and remain vulnerable to cellular damage as a result of excessive amount of light rays entering the retina. The physiological and pathological effects of light in the retina are triggered by the rhodopsin bleaching in the retina, which is the first site for photon absorption in the rod outer segments [1]. Intense light has been reported to be a potential risk factor for many ocular diseases, including retinitis pigmentosa (RP) and age-related macular degeneration (AMD) [2]. Long exposure to excessive photons under sun and artificial light causes damage to the photoreceptors, or even their death.

Apoptosis is responsible for the photoreceptor and RPE cell death which occurs as a result of DNA fragmentation and nuclear chromatin condensation. The proapoptotic c-fos and calcium alteration may initiate the apoptotic process [3]. Exposure to intense (>10,000 lux) or constant light (24 hours) causes excessive oxidative stress in the retina and RPE. Extended exposure to intense light also leads to the loss of polyunsaturated fatty acids from the membranes, DNA fragmentation, and increased expression of a 32-kDa antioxidative prohibitin [1], [4]–[6].

Circadian clock is endogenously generated rhythm with a periodicity of approximately 24 hours and the rhythmicity that continues at constant environmental conditions that include light and temperature. Most behavioral (performance, mood, sleep, alertness) and physiological (electrolytes, body temperature, hormones) measures are regulated by circadian clock to enable organisms to predict and adapt to changes in their environment [7].

Melatonin (N-acetyl-5-methoxytryptamine) is an antioxidant and circadian clock pacemaker, produced nocturnally from tryptophan in the retina and pineal gland of mammals [2], [8]. Retinal melatonin is down-regulated by light and barely detectable during the day. Decreased melatonin in the retina under a long period of exposure to light contributes to the retinal degeneration [2].

Biochemical reactions of light-electrical energy conversion in the retina and RPE require the increased metabolism rate to satisfy the demand for high energy. Light induced degeneration of photoreceptors depends on rhodopsin bleaching and photo transductions [1], [2], [4], [7]–[10]. Damage associated with light exposure increases production of reactive oxygen species that have been implicated as an early event in light-induced retinal degeneration.

Previously, we showed that the visual cycle might be coordinated in a circadian-dependent manner to effectively protect the retina from the detrimental effects of light-induced ROS damage [2], [3], [13]. We hypothesize that these conditions may regulate protection mechanisms in the retina by anti-apoptosis, and that melatonin-targeted molecules may play

crucial roles in maintaining neuroretinal architecture. Our results demonstrated that melatonin could affect cytoskeletal structure via the mechanisms involving up-regulation of prohibitin and β -tubulin. We suggest that melatonin treatment could protect mitochondria under oxidative stress and therefore be beneficial for the treatment of light-induced ocular diseases, including age-related macular degeneration.

2 METHODS

ARPE-19 Cells under Oxidative Stress

For *in vitro* experiments, retinal pigment epithelial cells (ARPE-19) were purchased from ATCC (Manassas, VA). ARPE-19 cells were cultured in a 5% CO₂ incubator at 37°C in 100 mm dishes (Nalge Nunc International, Naperville, IL) using Dulbecco's modified Eagle's medium (DMEM) with fetal bovine serum (10%) and penicillin/streptomycin (1%). Confluent cells were trypsinized (5–7 minutes at 37 °C) using a trypsin-EDTA buffer (0.1%, Sigma-Aldrich, St. Louis, MO), followed by centrifugation (300 × *g*, 7 min). Cells (eight to nine passages) were grown to confluence for 2–4 days and then were treated with H₂O₂ (200 μ M), intense light (7,000–10,000 lux, 1–24 hours) or constant light (700 lux, 48 hrs). ARPE-19 cells were rinsed (Modified Dulbecco's PBS) and lysed using IP lysis buffer containing Tris (25 mM), NaCl (150 mM), EDTA (1 mM), NP-40 (1%), glycerol (5%), and protease inhibitor cocktail at pH 7.4 with periodic sonication (3 × 5 min), followed by centrifugation (13,000 × *g*, 10 minutes). Proteins were separated using SDS–PAGE and stained using Coomassie blue (Pierce, IL) or silver staining kit (Bio-Rad, Hercules, CA).

2.1 Melatonin Treatment

ARPE-19 cells were grown to 70% confluence in 10% FBS, 1% antibiotic supplemented DMEM. Cells were treated with 100 μ M melatonin in DMSO and 100 μ M H₂O₂, or 1 μ M melatonin and subjected to light stress (dark, 500 lux, and 7000 lux) for 12 hours. Cells were processed for immunocytochemistry (ICC) or proteins were extracted for Western blotting analysis.

2.2 Immunocytochemistry

ARPE-19 cells grown on cover slips were probed with prohibitin or β -tubulin primary antibody using AlexaFluor488 secondary antibody. Mitochondria and nuclei were labeled fluorescently with MitoTracker Orange and DAPI, respectively. More specifically, cells were grown on sterile glass cover slips in DMEM/F12 medium supplemented with 10 % FBS and 1% penicillin/streptomycin (Hyclone) in 5 % CO₂ incubator at 37 °C. Cells were washed with PBS and incubated with Mito-Tracker Orange CMTMRos (100 nM, Molecular Probes, Carlsbad, CA) in serum-free culture medium (30 min, 37 °C), followed by washing (PBS) and fixing (10 % formaldehyde, 30 min, room temperature). Membrane permeabilization was performed with 0.2 % Triton X-100 (Sigma-Aldrich, St. Louis, MO) in PBS for 30 min. Blocking was done by using complete medium (10 % FBS, 0.05 % Tween-20, 1 hour). Cells were incubated using anti-prohibitin antibody (1:1000, Genemed Synthesis Inc., San Antonio, TX, overnight, 4 °C) and washed with PBS, followed by incubation with Alexa Fluor 488-conjugated anti-rabbit IgG secondary antibody (1:700; Molecular Probes, Carlsbad, CA, 1 h, room temperature). Cells were mounted with VECTASHIELD medium

with DAPI (4,6-diamidino-2-phenylindole, the nucleus) and visualized using a Zeiss AxioVert fluorescent microscope (200 M Apo Tome, 639 magnification). Data were analyzed using ImageJ software (NIH) [11]–[14].

2.3 Western Blot and Analysis

ARPE-19 whole cell lysate was used to extract proteins. 1D and 2D SDS-PAGE gels were run and proteins were transferred to Western blot membranes. Prohibitin and β -tubulin were tagged with primary and HRP-conjugated secondary antibodies. Protein amount was quantitated using a BSA standard curve with a BCA protein assay kit (Pierce). Samples were solubilized in Laemmli buffer (5X, 240 mM Tris, pH 6.8, 8 % SDS, 40 % glycerol, 0.4 % bromophenol blue, 10 % β -mercaptoethanol) and denatured at 90 °C for 10 min. Proteins were separated using a gradient polyacrylamide precast gel (8–16 %, Bio-Rad, Hercules, CA), followed by semidry electrotransfer (15 V, 30 min) onto the methanol-activated PVDF membrane (Bio-Rad). Nonspecific proteins were blocked (5 % nonfat dry milk, 2 h, 4 °C) in Tween-20 (0.1 %). Membranes were incubated using a primary antibody (rabbit polyclonal, 1:1000, Genemed Synthesis, San Antonio, TX, 4 °C, overnight) and an anti-rabbit HRP conjugated secondary antibody (1:10,000,

Agrisera, Vännäs, Sweden, 2 h, room temperature). Protein bands were visualized using West Pico Chemiluminescent reagent (Pierce, 1–2 min) and a LAS 4000 mini luminescent image analyzer (GE, Piscataway, NJ). Membranes were incubated again using an anti- β -actin antibody (mouse monoclonal, 1:5000, Sigma-Aldrich, St. Louis, MO) followed by a secondary antibody (1:7000, antimouse, horse radish peroxidase conjugated, Santa Cruz Biotechnology, Santa Cruz, CA) as a loading/positive control. Protein relative amount was analyzed quantitatively based on pixels (area and intensity) using Quantity One software (Bio-Rad) and GraphPad Prism software [11]–[14].

3 RESULTS AND DISCUSSION

Previously, our studies identified proteins that showed a reversal of the constant light-induced expression changes after melatonin administration. Proteomic data showed that constant light-regulated proteins include molecular chaperones (crystalline family), antioxidative proteins (peroxiredoxins), G-protein coupled receptors (G proteins and Rab), and neuroretinal filament proteins (vimentin, tubulin) [2]. Identifications of melatonin-targeted proteins lay the foundation for the current studies of melatonin's potential for preventing or treating light induced retinal degeneration.

In the current study, we treated ARPE-19 cells with melatonin to test the hypothesis that melatonin induces expression of prohibitin and alters cytoskeletal structure. Immunocytochemical analysis showed that melatonin increased levels of prohibitin and promoted prohibitin nuclear localization (Figure 1).

The nucleus, mitochondria, and prohibitin in ARPE-19 cells were fluorescently labeled with DAPI, MitoTracker Orange, and AlexaFluor488 in melatonin treatment (100 μ M, A, B, C) versus control (D, E, F). Nuclear localization of prohibitin was increased in a melatonin-dependent manner and mitochondrial structure was changed into ring-orientated structure.

Next, we tested the hypothesis whether melatonin could affect cytoskeletal structure via regulation of β -tubulin. Immunocytochemistry showed that cytoskeletal structure was modified in melatonin-supplemented ARPE-19 cells (Figure 2). Melatonin treated cells demonstrated distinct morphological changes (Figure 2A and 2B). β -tubulin structure was altered and neurite-like outgrowth was induced in melatonin-treated cells (Figure 2C and 2D).

Initial cell shape of ARPE-19 was epitheloid; however, with 100 μ M melatonin the cells underwent morphological changes to fusiform shape with neurite-like outgrowths. Immunocytochemistry of melatonin treated cells illustrates an increase in and higher nuclear localization of prohibitin and a rearrangement in β -tubulin compared to non-treated cells.

Western blot analysis shows a 3-fold up-regulation of prohibitin with melatonin treatment versus control. A comparable level of prohibitin was detected when ARPE-19 cells were subjected to treatment of both melatonin and H_2O_2 . β -tubulin levels were up-regulated under melatonin to a lesser extent (Figure 3).

Previously, our proteomic data demonstrated that mitochondrial-nuclear shuttle scaffold prohibitin was down-regulated under oxidative stress [11]. The current study showed that melatonin reestablishes prohibitin levels under oxidative stress.

Western blotting analysis shows up-regulation of prohibitin in melatonin treatment, whereas down-regulation in oxidative stress (H_2O_2). However, when melatonin is treated under oxidative stress simultaneously, melatonin reestablishes prohibitin levels as control concentration. β -tubulin shows no statistically different changes from control under oxidative stress.

ARPE-19 cells that underwent light stress and 100 μ M melatonin supplement demonstrated that up-regulation of prohibitin compared to control in the dark (Figure 4). For both normal room light or intense light conditions (500 vs. 7,000 lux), prohibitin was up-regulated as previously observed in mouse retina in vivo. β -tubulin was also up-regulated by melatonin and light stress. A 2.5-fold increase of β -tubulin from dark control was observed in melatonin treated cells with light (500 lux).

2D SDS-PAGE demonstrated that β -tubulin undergoes dephosphorylation or basic modification in melatonin treatment conditions, showing pI value of approximately 5.9 which is not seen in the control.

4 CONCLUSION

Melatonin up-regulates the anti-apoptotic, mitochondrial-nuclear shuttle protein prohibitin in human retinal pigment epithelium. Application of melatonin to RPE during oxidative stress reinstates normal prohibitin levels in the cells, indicating that melatonin has a regulatory effect on this anti-apoptotic mechanism. A high concentration of melatonin restructures RPE cytoskeleton by β -tubulin modification and rearrangement. The current study suggests that re-organization of the β -tubulin framework may play a role in cellular stabilization during oxidative stress. Melatonin treatment alters cytoskeletal and mitochondrial structure in the

RPE, implying potential therapeutic function of melatonin toward light-induced retinal diseases, including age-related macular degeneration.

Acknowledgments

We would like to thank Parrisha Louis, Joey Smith, Jackie Pribyl, Dr. Ruonan Zhang for their technical assistance, as well as Dr. Mike Gibson and Dr. Jeremy Goldman for use of their equipment. This study was supported by the Century II Equipment Fund and the Research Excellence Fund from Michigan Technological University, Research Assistantship and Teaching Assistantship from American University of Nigeria. The authors thank Dr. Brian K. Reed for his critical reading and suggestions.

References

1. Organisciak DT, Darrow RM, Barsalou L, Kutty RK, Wiggert B. Circadian-Dependent Retinal Light Damage in Rats. *Invest Ophthalmol Vis Sci*. Nov; 2000 41(12):3694–3701. [PubMed: 11053264]
2. Zhang R, Hrushesky WJM, Wood PA, Lee SH, Hunt RC, Jahng WJ. Melatonin reprogrammes proteomic profile in light-exposed retina in vivo. *Int J Biol Macromol*. Aug; 2010 47(2):255–260. [PubMed: 20434483]
3. Chung H, Lee H, Lamoke F, Hrushesky WJM, Wood PA, Jahng WJ. Neuroprotective Role of Erythropoietin by Antiapoptosis in the Retina. *J Neurosci Res*. Aug; 2009 87(10):2365–2374. [PubMed: 19301424]
4. Noell WK, Walker VS, Kang BS, Berman S. Retinal Damage by Light in Rats. *Invest Ophthalmol Vis Sci*. Oct; 1966 5(5):450–473.
5. Organisciak DT, et al. Light history and age-related changes in retinal light damage. *Invest Ophthalmol Vis Sci*. Jun; 1998 39(7):1107–1116. [PubMed: 9620069]
6. Shahinfar S, Edward DP, Tso MO. A pathologic study of photoreceptor cell death in retinal photic injury. *Curr Eye Res*. Jan; 1991 10(1):47–59.
7. Skene DJ, Arendt J. Human circadian rhythms: physiological and therapeutic relevance of light and melatonin. *Ann Clin Biochem*. Sep; 2006 43(5):344–353. [PubMed: 17022876]
8. Wiechmann AF, Summers JA. Circadian rhythms in the eye: The physiological significance of melatonin receptors in ocular tissues. 2008; 27:137–160.
9. Organisciak DT, et al. Light history and age-related changes in retinal light damage. *Invest Ophthalmol Vis Sci*. Jun; 1998 39(7):1107–1116. [PubMed: 9620069]
10. Tosini G, Menaker M. Circadian Rhythms in Cultured Mammalian Retina. *Science*. 1996; 272(5260):419–421. [PubMed: 8602533]
11. Lee H, et al. Prohibitin as an oxidative stress biomarker in the eye. *Int J Biol Macromol*. Dec; 2010 47(5):685–690. [PubMed: 20832420]
12. Sripathi SR, et al. Mitochondrial-nuclear communication by prohibitin shuttling under oxidative stress. *Biochemistry (Mosc)*. Oct; 2011 50(39):8342–8351.
13. Sripathi SR, et al. Altered Cytoskeleton as a Mitochondrial Decay Signature in the Retinal Pigment Epithelium. *Protein J*. 2016; 35(3):179–192. [PubMed: 27029380]
14. Sripathi SR, et al. Prohibitin as the Molecular Binding Switch in the Retinal Pigment Epithelium. *Protein J*. Feb; 2016 35(1):1–16. [PubMed: 26661103]

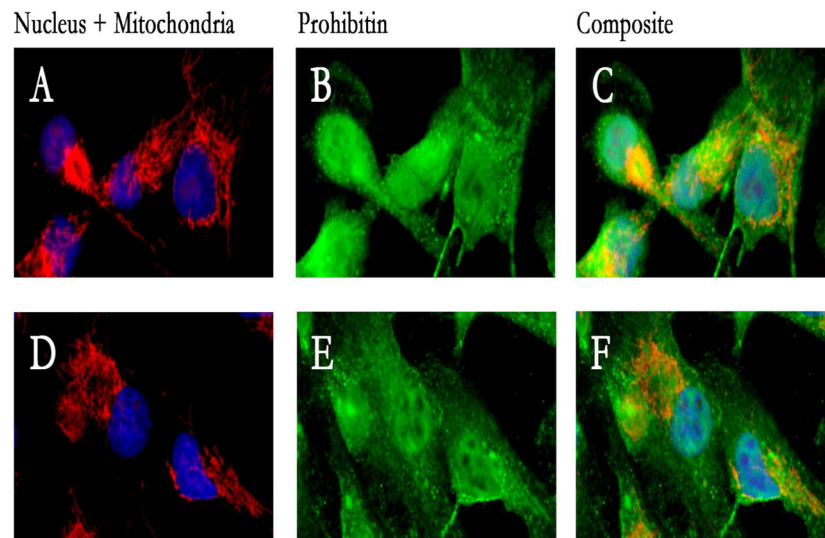


Figure 1. Melatonin up-regulated prohibitin concentration and promoted nuclear localization of prohibitin in ARPE-19 cells. ARPE-19 cells were fluorescently labeled with DAPI, MitoTracker Orange, and AlexaFluor488 to show the nucleus (blue), mitochondria (red) and prohibitin (green), in melatonin treatment (100 μ M, A, B, C) versus control (D, E, F). Prohibitin localization is up-regulated in the nucleus and prohibitin concentration is increased. Mitochondria was altered into ring-orientated structure.

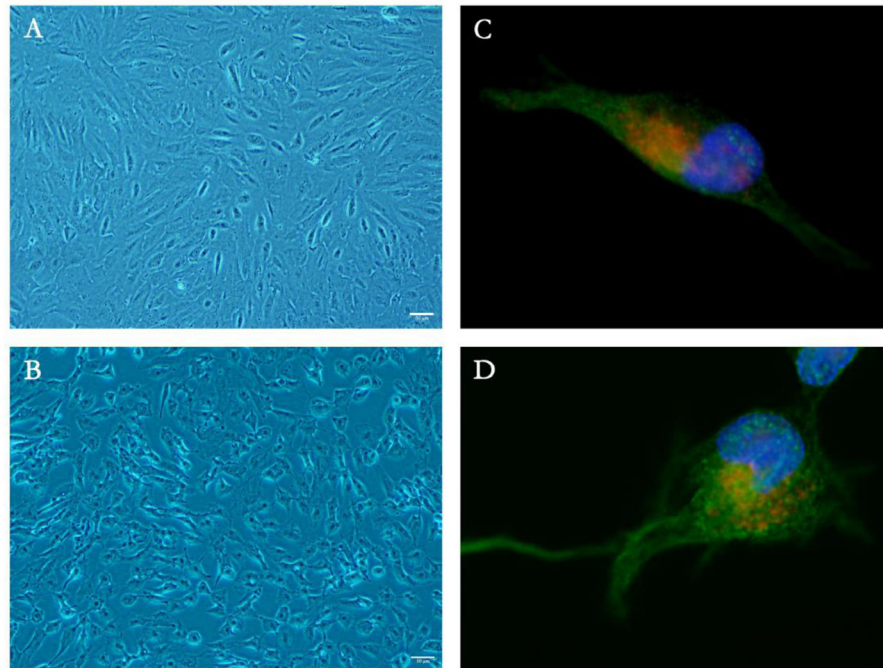


Figure 2. Cytoskeletal structure is modified in melatonin-supplemented ARPE-19 cells. A,C. Control; B,D. Melatonin 100 μ M; AlexaFluor488 labeled β -tubulin (green) of control (C) and melatonin treatment (D). Melatonin treatment shows distinct morphological changes in ARPE-19 (A, B). Melatonin induced the formation of neurite-like outgrowth by altering β -tubulin levels (C, D).

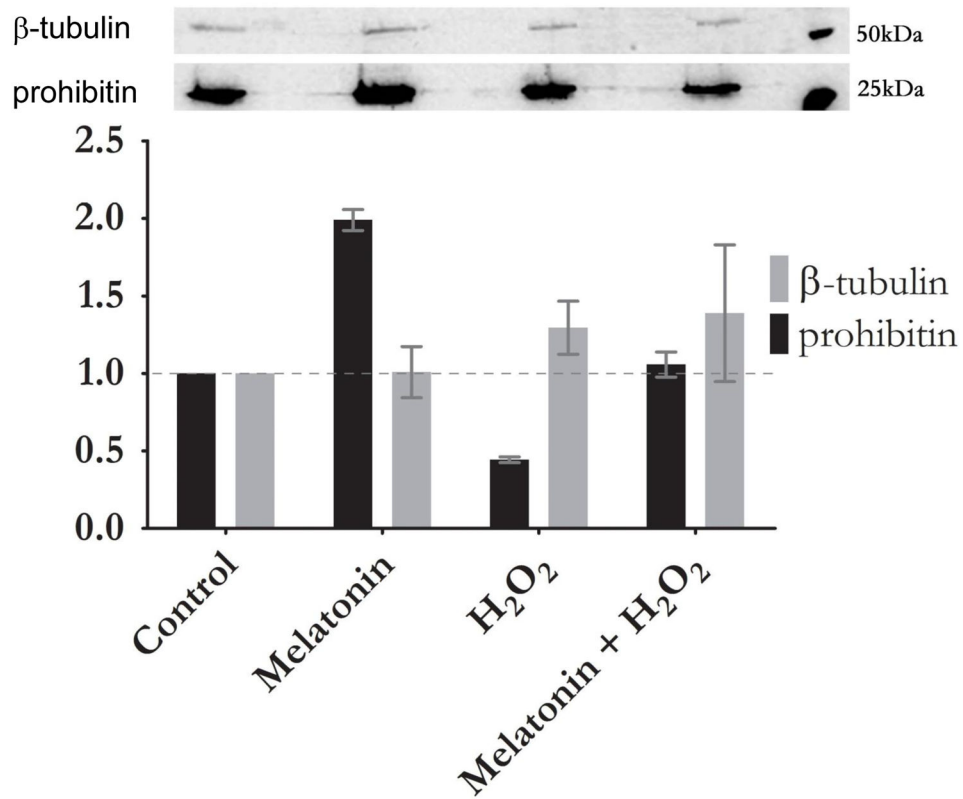


Figure 3.

Melatonin reestablishes prohibitin concentration under oxidative stress. Prohibitin (32 kDa) and β -tubulin (55 kDa) levels were examined in relation to 100 μ M Melatonin and 100 μ M H_2O_2 treated cells. Quantitative analysis of Western blot shows up-regulation of prohibitin in melatonin treatment, down-regulation in oxidative stress (H_2O_2), and recover when treated simultaneously. β -tubulin shows no statistically different changes from control under H_2O_2 treatment. Western blot analysis (upper panel) shows control (Lane 1), melatonin treatment (Lane 2), oxidative stress (Lane 3), melatonin treatment under oxidative stress (Lane 4), and molecular markers (50 and 25 kDa), respectively.

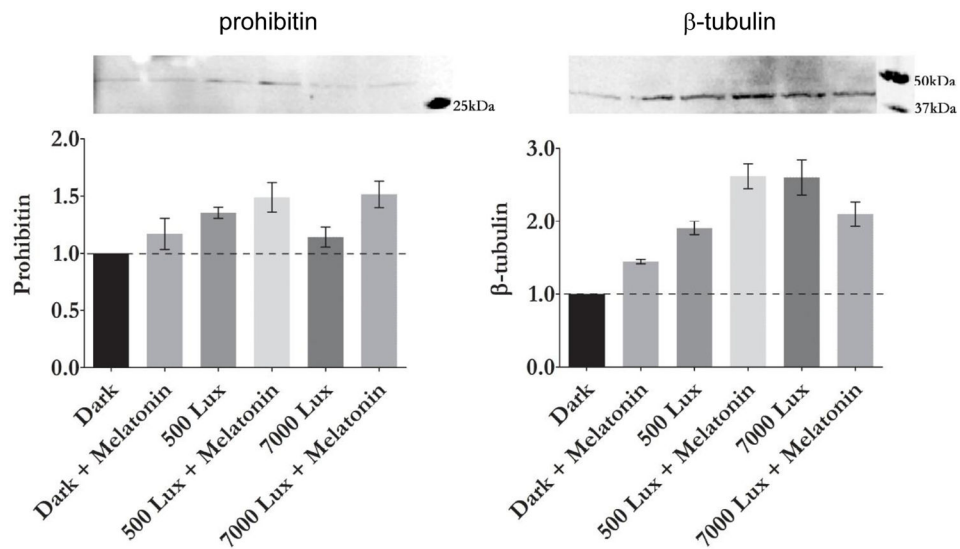


Figure 4. Light exposure and melatonin up-regulate prohibitin and β -tubulin levels in ARPE-19 cells. Prohibitin and β -tubulin levels were examined in dark control, light (500 lux), light with melatonin (500 lux + 1 μ M melatonin), intense light (7000 lux) and intense light with melatonin (7,000 lux + 1 μ M melatonin). Prohibitin and β -tubulin levels were up-regulated under light and melatonin conditions.

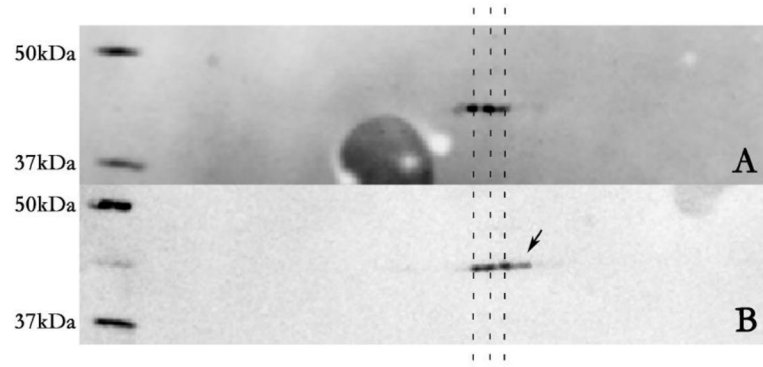


Figure 5. β -tubulin is dephosphorylated by melatonin and light stress. Dark control shows β -tubulin with pI values ranging from 5.6 to 5.8 (A), whereas 1 μ M melatonin treatment shows a basic pI value of 5.9 (B).