

The pathogenicity of T cell epitopes on human Goodpasture antigen and its critical amino acid motif

Shui-yi Hu^{a, b, c, d, e, #}, Qiu-hua Gu^{a, b, c, d, #}, Jia Wang^{a, b, c, d}, Miao Wang^{a, b, c, d},
Xiao-yu Jia^{a, b, c, d}, Zhao Cui^{a, b, c, d, *}, Ming-hui Zhao^{a, b, c, d, f}

^a Renal Division, Peking University First Hospital, Beijing, China

^b Institute of Nephrology, Peking University, Beijing, China

^c Key Laboratory of Renal Disease, Ministry of Health of China, Beijing, China

^d Key Laboratory of CKD Prevention and Treatment, Ministry of Education of China, Beijing, China

^e Department of Nephrology, Tianjin Medical University General Hospital, Tianjin, China

^f Peking-Tsinghua Center for Life Sciences, Beijing, China

Received: November 10, 2016; Accepted: January 19, 2017

Abstract

Goodpasture antigen, the non-collagenous domain of $\alpha 3$ chain of type IV collagen [$\alpha 3(\text{IV})\text{NC1}$], is the target antigen of anti-glomerular basement membrane (GBM) antibodies. The pathogenicity of T cell epitopes is not elucidated clearly. In this study, we aim to define the nephritogenic T cell epitopes and its critical amino acid residues. Twenty-four overlapping linear peptides were synthesized covering the whole sequence of human $\alpha 3(\text{IV})\text{NC1}$. Wistar–Kyoto rats were immunized with linear peptides, and experimental autoimmune glomerulonephritis was evaluated. Critical amino acid was identified by the loss of nephritogenic function after each amino acid substitution by alanine. Of the 24 peptides, P14 ($\alpha 3_{127-148}$) could induce 90.5% (19/21) of WKY rats developing anti-GBM glomerulonephritis with proteinuria, elevated serum urea and creatinine, IgG linear deposit on GBM and substantial (in average $82.4 \pm 5.6\%$) crescent formation in glomeruli. Lymphocytes of immunized rats proliferated in response to $\alpha 3_{127-148}$ and $\alpha 3(\text{IV})\text{NC1}$ *in vitro*. Sera of these rats recognized $\alpha 3_{127-148}$ and later on together with intact human $\alpha 3(\text{IV})\text{NC1}$. Antibodies towards $\alpha 3_{127-148}$ and intact $\alpha 3(\text{IV})\text{NC1}$ could also be detected from the kidney elutes. These antibodies showed no cross-reaction with each other, which implies intramolecular epitope spreading during disease progress. After sequential amino acid substitution, the $\alpha 3_{127-148}$ with substitution of tryptophan₁₃₆, isoleucine₁₃₇, leucine₁₃₉ or tryptophan₁₄₀ lost its nephritogenicity. Human $\alpha 3_{127-148}$ is a nephritogenic T cell epitope in WKY rats, with the critical amino acids as W₁₃₆L₁₃₇X_LL₁₃₉W₁₄₀. These findings might facilitate future investigation on microbial aetiology and potential specific immunotherapy of anti-GBM disease.

Keywords: anti-GBM disease • Goodpasture antigen • epitope • T cell • experimental autoimmune glomerulonephritis

Introduction

Goodpasture disease, also known as anti-GBM disease, is an autoimmune disorder characterized by the production of anti-GBM autoantibodies, rapidly progressive glomerulonephritis and high risks for alveolar haemorrhage. The autoantigen of anti-GBM disease has been identified as the non-collagenous domain 1 (NC1) of $\alpha 3$ chain of type IV collagen ($\alpha 3(\text{IV})\text{NC1}$), also known as Goodpasture antigen [1, 2]. Two major immunodominant regions, E_A and E_B, have been mapped to the residues 17-31 and 127-141 of $\alpha 3(\text{IV})\text{NC1}$ [3, 4] (all amino acid

numbering, including other cited epitopes, converted from the original numbering to that of reference [2]).

The pathogenic role of anti-GBM antibodies has been demonstrated in passive transfer studies [5–9]. In recent years, compelling studies indicate that T lymphocytes play an important and independent role on disease pathogenesis in both human Goodpasture disease and animal models. In patients with anti-GBM disease, T cell infiltration had been found around the affected glomeruli and correlated with the severity of kidney injury [10, 11]. T cell involvement can be implied from the strong HLA associations with disease [12–15]. Help from T cells is required for antibody response like affinity maturation, subclass switching, antigen specificity and epitope spreading [16–20]. The animal models provide more direct evidence that T cells participated in the pathogenesis of crescentic nephritis. In

[#]These authors contribute equally.

*Correspondence to: Zhao CUI, M.D.

E-mail: cuizhao@bjmu.edu.cn

the absence of antibodies against GBM, $\alpha 3(\text{IV})\text{NC1}$ -specific CD4^+ T cells alone are sufficient to initiate glomerular injury in WKY rats [21–24]. The disease can be inhibited by anti-T cell therapies, including CD28–B7 or CD154–CD40 costimulatory blockade [25, 26], and anti-CD4 and anti-CD8 monoclonal antibodies [27]. Furthermore, T cell tolerance can be induced *via* oral or nasal administration of Goodpasture antigen prior to induction of disease [28, 29].

One study on T cell epitope mapping identified two major T cell epitopes in patients with this disease, as $\alpha 3_{69-88}$ and $\alpha 3_{129-148}$ [30]. Our recent findings confirmed the peptide $\alpha 3_{129-148}$ as the major T cell epitope and revealed another T cell epitope as $\alpha 3_{189-208}$ [Hu SY, *et al.* Submitted]. Whether these epitopes are pathogenic to induce glomerulonephritis remains unknown. Using HLA-DRB1 transgenic mice, Ooi *et al.* successfully defined a HLA-DRB1*15:01-restricted T cell epitope, $\alpha 3_{135-145}$, which could induce T cell responses and injury in anti-GBM nephritis. Four critical amino acid residues for T cell responses were further identified as isoleucine₁₃₇, tryptophan₁₄₀, glycine₁₄₂ and phenylalanine₁₄₃ in the corresponding human $\alpha 3$ sequences [31].

In this study, we synthesized a set of peptides spanning the entire sequence of human $\alpha 3(\text{IV})\text{NC1}$. The nephritogenic role of one T cell peptide on human Goodpasture antigen was identified by its capacity of inducing crescentic glomerulonephritis in Wistar–Kyoto (WKY) rats. Epitope spreading of B cell reactivity evolved during disease development, which was comparable to what happened in patients with anti-GBM disease. Critical amino acid residues of this nephritogenic T cell epitope were further identified by sequential amino acid substitution. These findings are advantageous to understand the pathogenesis and aetiology of human Goodpasture disease and might be useful for the potential development of more specific immunotherapies.

Materials and methods

Preparation of antigens

Linear peptides

The published sequence of human $\alpha 3(\text{IV})\text{NC1}$ was used to synthesize peptides [30]. A panel of 24 peptides was synthesized covering the whole sequence of human $\alpha 3(\text{IV})\text{NC1}$, based on a series of 20-mer peptides overlapping with 10 amino acids. P14 was truncated into three 13-mer peptides overlapping by eight amino acids to identify the core immunogenic region of P14. To identify the critical amino acid, each amino acid residue of P14 ($\alpha 3_{127-148}$) was replaced by alanine in a sequential order. All peptides were synthesized on an automatic peptide synthesizer using F-moc (9-fluorenyl-methyloxycarbonyl) chemistry (Beijing Scilight Biotechnology Ltd Co, Beijing, China) and purified by a reverse-phase CIS column on a preparative HPLC. Purified peptides were analysed by HPLC for purity and mass spectrometry for the correct sequence. Peptides with purity >98% were used for further tests.

Recombinant human $\alpha(\text{IV})\text{NC1}$

The recombinant proteins were produced as described previously [19]. In brief, cDNA from the NC1 domain of human type IV collagen $\alpha 1$, $\alpha 2$,

$\alpha 3$, $\alpha 4$ and $\alpha 5$ was ligated to a type X collagen triple-helix leader sequence and subcloned into the pcDNA3 vector. The constructs were then stably transfected into a human embryonic kidney cell line (HEK 293), and recombinant proteins were harvested and purified from the medium.

Bovine $\alpha(\text{IV})\text{NC1}$

Bovine $\alpha(\text{IV})\text{NC1}$ was prepared as described previously [17]. In brief, glomeruli were isolated by differential sieving, and cells were lysed in 5 mmol/l Tris-HCl at 4°C overnight. Crude GBM was suspended in 4% (w/v) deoxycholic acid at 37°C for 2.5 hrs, in deoxyribonuclease I (50Kunitz U/ml) at 37°C for 1 hr and then digested by bacterial collagenase I (Sigma-Aldrich, St. Louis, MO, USA) at 1:10 enzyme/protein ratio, in N-hydroxyethylpiperazine-N'-ethane sulphonic acid buffer at 37°C for 20 hrs. The supernatant (soluble GBM proteins) was applied to a Resource Q ion exchange chromatography column (Amersham Pharmacia, Freiburg, Sweden). NC1 domains, which did not bind to the column, were collected, concentrated and dialysed.

Cells proliferation assays

Lymphocytes isolated from draining lymph nodes of rats 2 weeks after immunization were cultured at a concentration of 5×10^5 cells/well in RPMI 1640 media with 10% FBS, 2 mmol/l L-glutamine, 100 U/ml penicillin and 0.1 mg/ml streptomycin (ScienCell, Sandiego, CA, USA). The cell proliferation was estimated 72 hrs after stimulation with P14 at 10 $\mu\text{g}/\text{ml}$ or human $\alpha 3(\text{IV})\text{NC1}$ at 10 $\mu\text{g}/\text{ml}$.

All plates were incubated at 37°C in a humidified atmosphere of 5% CO₂/95% air. ³H-thymidine was added to the triplicate microtitre wells at 1 $\mu\text{Ci}/\text{well}$, and 16 hrs later, the cells were harvested on an automatic cell harvester (Tomtec, San Diego, CA, USA). Thymidine incorporation was measured using an automated β -counter (EG&G Wallac, Turku, Finland). The results were expressed in stimulation index (SI) (³H-TdR incorporation [cpm] of cells with antigen stimulation/³H-TdR incorporation [cpm] of cells without antigen stimulation). SI > 2.0 was interpreted as significant positive response [32, 33].

EAG models

Immunization on WKY rats

Female WKY rats, 4–6 weeks of age, were purchased from Vital River Laboratories (Beijing, China). Rats were immunized with either 1.4 $\mu\text{g}/\text{g}$ of bovine $\alpha(\text{IV})\text{NC1}$ or 0.7 $\mu\text{mol}/\text{g}$ of peptides, both emulsified in complete Freund's adjuvant (CFA; Sigma-Aldrich), by single intraperitoneal injection. Negative controls were immunized with CFA alone. Twenty-four-hour urine samples were collected before and after immunization at each week using metabolism cages. Blood samples were collected before and after immunization at each week by angular venipuncture. The experimental animals were killed around 7 weeks after immunization, and blood and kidneys were collected for further experiments. All animal experiments were approved by the Experimental Animal Ethics Committee of Peking University First Hospital (Beijing, China).

Evaluation of clinical manifestations and renal histopathology

The urinary protein, serum creatinine and blood urea nitrogen (BUN) of rats were tested in Clinical Laboratory of Peking University First Hospital. Kidney tissues of rats were fixed in 10% buffered formalin, dehydrated through graded ethanol and embedded in paraffin, and kidney sections (3 μm thick) were stained with periodic acid–Schiff or HE staining. At least 50 glomeruli from each rat were observed to assess lesions including glomerular necrosis and crescent formation. Glomerular crescent was defined as at least two layers of cells in Bowman’s space [31]. The interstitium lesions were scored from 0 to 3+, including inflammatory cell infiltration, tubular atrophy and fibrosis. For electronic microscopy, kidney tissues was fixed in 3% glutaraldehyde and then 1% osmium tetroxide, followed by dehydration in graded ethanol and washing in acetone, and finally embedding in Epon 812. Ultrathin sections were stained with uranyl acetate and lead citrate and examined with a transmission electron microscope (JEM-1230, JEOL, Japan). For direct immunofluorescence, the 5-μm frozen sections was fixed in acetone for 10 min. at 4°C, blocked with 3% BSA and stained with FITC-conjugated goat anti-rat IgG (Zhongshan Golden Bridge Biotechnology, Beijing, China).

Elution of antibodies from kidney

Kidneys were eluted by glycine method as previously described [34]. In brief, the cortical portions of the kidneys were dissected out by slicing with a scalpel blade, mixed with cold PBS and homogenized with homogenizer. This homogenate was spun at 2500 *g* for 10 min. at 4°C. The sediment was washed with cold PBS five times by centrifugation. After the final wash, the sediment was suspended in five times volume of 0.1 mol/l glycine, PH 2.8 and incubated at 4°C with constant shaking for 2 hrs. After incubation, the mixture was spun at 10,000 *g* for 30 min. at 4°C. The supernatant was removed, immediately brought to pH 7.0 with 2 mol/l Tris-HCl (PH 9.0) and dialysed against several changes of PBS.

Antibody detections

The antigen spectrum of circulating antibodies and kidney elutes was investigated by ELISA as previous reports [35]. Peptides at 10 μmol/l and human α(IV)NC1 at 2 mg/l were diluted with 0.05 mol/l bicarbonate buffer (pH 9.6) and coated onto half of the wells of a polystyrene microtitre plate (Nunc, Roskild, Denmark). The other half of the wells was coated with bicarbonate buffer alone as antigen-free wells to exclude non-specific binding. The volume of each well was 50 μl. Incubation was carried out at 4°C overnight. Test sera were diluted at 1:100, and elutes were diluted at 1:5 in PBS containing 0.05% Tween-20 and added in duplication to both antigen-coated wells and antigen-free wells at 37°C for 30 min. After washing thrice, alkaline phosphatase-conjugated goat anti-rat IgG (Sigma-Aldrich) diluted 1:4000 was added. Incubation resumed at 37°C for 30 min. After washing, p-nitrophenyl phosphate (1 mg/ml) in substrate buffer (1 mol/l diethanolamine, 0.5 mmol/l MgCl₂, pH 9.8) was used as substrate, and colour development was measured spectrophotometrically at 405 nm (Bio-Rad, Tokyo, Japan) 30 min. later.

Cross-reaction between antibodies against P14 and intact human α3(IV)NC1 was investigated using inhibition ELISA. In brief, polystyrene microtitre plates were coated with P14. The diluted sera were

pre-incubated with either soluble human α3(IV)NC1 from 0.1 to 10 mg/l or P14 from 0.1 to 10 μmol/l at 37°C for 60 min., respectively. The mixtures were then transferred to the P14-coated microtitre plates, and

Table 1 Sequences of each linear peptide on α3(IV)NC1 and T cell responses

Peptide	Sequence from N-Terminus	Position from N-terminus
P1	SPATWTRGRGFVFRHSQTTA	1–18
P2	VFRHSQTTAIPSCPEGTVPL	9–29
P3	TAIPSCPEGTVPLYSGFSFLV	17–38
P4	LYSGFSFLVQGNQRAHGQD	29–48
P5	QGNQRAHGQDLGLGSLQR	39–58
P6	LGLGSLQRFTTMPFLFCN	49–68
P7	FTTMPFLFCNVNDVCNFAFR	59–78
P8	VNDVCNFAFRNDYSYWLSTPA	69–88
P9	NDYSYWLSIPALMPMNMAPI	79–98
P10	ALMPMNMAPITGRALEPYIS	89–108
P11	TGRALEPYISRCTVCEGPAI	99–118
P12	RCTVCEGPAIAIAVHSQTTD	109–128
P13	AIAVHSQTTDIPPCPHGWIS	119–138
P14	TDIPPCPHGWISLWKGFSFIMF	127–148
	LWKGFSFIMFTSAGSEGTGQ*	139–158
P15	TSAGSEGTQALASPGSCLE	149–168
P16	ALASPGSCLEEFRASPFLFC	159–178
P17	EFRASPFLFCCHGRGTCNYYS	169–188
P18	HGRGTCNYYSNSYSFWLASL	179–198
P19	NSYSFWLASLNPERMFRKPI	189–208
P20	NPERMFRKPISTVKAGELE	199–218
P21	PSTVKAGELEKIIISRCQVCM	209–228
P22	KIIISRCQVCMKKRH	219–232
P23	KGFSFIMFTSAGSE	141–154
P24	FIMFTSAGSEGTGQ	145–158
P14a	TDIPPCPHGWISL	127–139
P14b	CPHWISLWKGFS	132–144
P14c	ISLWKGFSFIMFT	137–149

*This sequence was not available due to synthetic difficulties. Two truncated peptides derived from it were then designed and successfully synthesized as P23 and P24.

the bound antibodies were detected with alkaline phosphatase-conjugated secondary antibodies, as described above.

Statistical analyses

Differences of quantitative parameters were assessed using the *t*-test for data that were normally distributed, or nonparametric test for data that were not normally distributed. Differences of qualitative data were compared using chi-square test and Fisher's exact test. Data from animal experiments are expressed as mean \pm S.E.M. All statistical analyses were two-tailed, and *P* value <0.05 was considered significant. Analysis was performed using SPSS statistical software package, version 13.0 (SPSS Inc., Chicago, IL, USA).

Results

Induction of anti-GBM nephritis by immunization with linear peptides spanning Goodpasture antigen

Twenty-four overlapping linear peptides were synthesized covering the whole sequence of human $\alpha 3(\text{IV})\text{NC1}$ (Table 1).

Nineteen of 21 (90.5%) rats immunized with P14, $\alpha 3_{127-148}$, and developed severe crescentic glomerulonephritis (Fig. 1A). The animals showed proteinuria by week 3 after immunization (Fig. 1B). BUN and serum creatinine (Scr) increased by week 4 and 5, respectively (Fig. 1C and D). Then, the rats developed severe proteinuria (130.3 ± 17.6 versus 1.7 ± 0.3 mg/24 hrs, $P < 0.001$) and high levels of serum creatinine (152.5 ± 28.9 versus 84.3 ± 5.2 $\mu\text{mol/l}$, $P = 0.031$) and BUN (50.8 ± 14.1 versus 8.2 ± 0.6 mmol/l, $P = 0.007$) and were killed at week 7.

After killing, kidney injury was evaluated by direct immunofluorescence, light microscopy and electron microscopy. All the 19 rats immunized by P14 presented with linear deposits of IgG along GBM on direct immunofluorescence (Fig. 2D). The percentage of crescent formation in glomeruli was $82.4 \pm 5.6\%$, with cellular crescents predominant (Fig. 2E). Lymphocyte and monocyte infiltration and tubular atrophy were found in the kidney interstitia accompanied by crescentic glomerulonephritis. On electron microscope, the fracture and shrinking of GBM was identified in the glomeruli with crescent formation, without electron dense deposits (Fig. 2F).

None of the rats immunized by other peptides developed any kidney injury. The urinary protein and the levels of serum creatinine and BUN were comparable to negative controls. No linear IgG staining or crescent formation was observed in the glomeruli.

All (6/6, 100%) the rats of positive controls developed severe crescentic glomerulonephritis as expected after the immunization with bovine GBM (Fig. 1A). All the rats showed proteinuria by week 2 (Fig. 1B). BUN and serum creatinine increased significantly and reached to 33.7 ± 21.7 mmol/l and 148.8 ± 48.8 $\mu\text{mol/l}$ by the end of week 7 (Fig. 1C and D). On kidney histopathological examinations, linear staining of IgG along GBM was shown with $76.8 \pm 6.0\%$ of crescent formation in glomeruli (Fig. 2A–C). No (0/6, 0%) rat of negative controls had kidney injury after the immunization with complete Freund's adjuvant (CFA; Fig. 2G–I).

Autoimmune disorder resulting from P14 immunization

Antibody production

Antigen specificity of the antibodies in sera and kidney elutes was detected by ELISA using P14 and recombinant human $\alpha 1-5(\text{IV})\text{NC1}$ as solid-phase ligands (Fig. 3A). Rats immunized with P14 developed

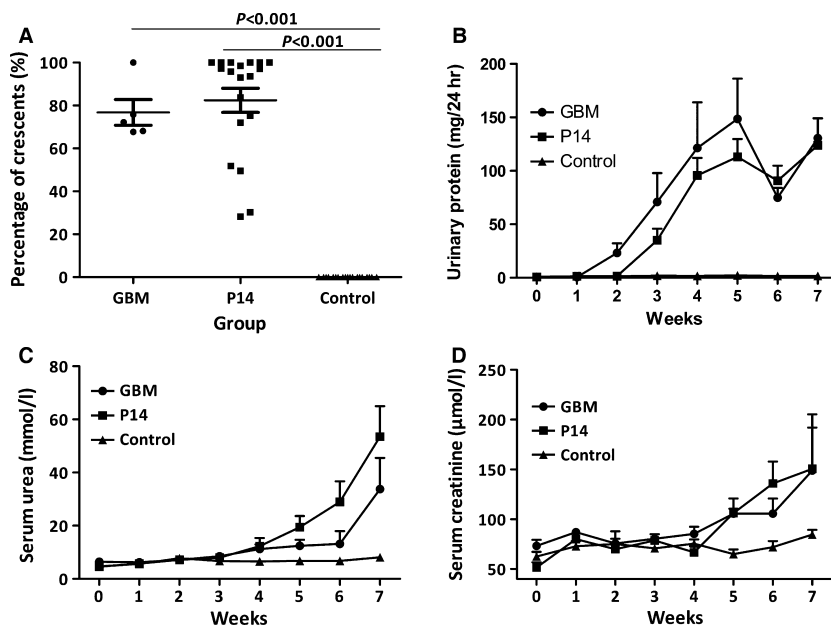


Fig. 1 Clinical spectrum of WKY rats immunized with P14 ($\alpha 3_{127-148}$), bovine glomerular basement membrane (GBM, positive control) and complete Freund's adjuvant (CFA) (negative control). High percentages of cellular crescents were shown in the glomeruli of positive controls and P14 immunization rats, but not in negative controls (A). Rats that were immunized with P14 and GBM had significantly increased urinary protein compared to negative control group (B) and decreased renal function as measured by blood urea nitrogen (C) and serum creatinine (D).

a robust serum antibody response to P14 itself by week 2 after immunization. To our surprise, 1 week later, the rats developed lower levels of antibodies towards intact human $\alpha 3(IV)NC1$. The responses to P14 and $\alpha 3(IV)NC$ peaked at week 5 after immunization. Although the levels of antibodies decreased after week 5, the clinical manifestations of animals deteriorated progressively and rapidly and had to be killed by week 7. No serum reaction against other chains of human $\alpha(IV)NC1$ was identified in the P14-immunized rats.

Inhibition ELISA was performed to detect whether there was cross-reaction between antibodies against P14 and intact human $\alpha 3(IV)NC1$ (Fig. 3B). The antibodies binding to P14 was strongly inhibited by soluble P14 but not by human $\alpha 3(IV)NC1$. The absence of cross-reaction of antibodies against $\alpha 3(IV)NC1$ and P14 indicated that they were two distinct populations. Therefore, intramolecular

epitope spreading occurred from linear epitopes on P14 to conformational epitopes on human $\alpha 3(IV)NC1$, during the disease progression of P14 induced EAG.

Antibodies were eluted from kidneys of two rats immunized with P14 and two rats with CFA immunization, respectively. Kidney elutes from P14 immunization rats demonstrated high levels of IgG binding to human $\alpha 3(IV)NC1$ but low-level binding to the immunogen P14, in contrast to the high level anti-P14 antibodies in the circulation (Fig. 3C). A moderate binding to $\alpha 2(IV)NC1$ was also found from the kidney elutes, while only mild or no binding to $\alpha 1$, $\alpha 4$ or $\alpha 5(IV)NC1$ was observed in the kidney elutes.

Two of the rats in the P14 immunization group developed antibody response to P14 but not to $\alpha 3(IV)NC1$, and no glomerulonephritis was observed in these rats.

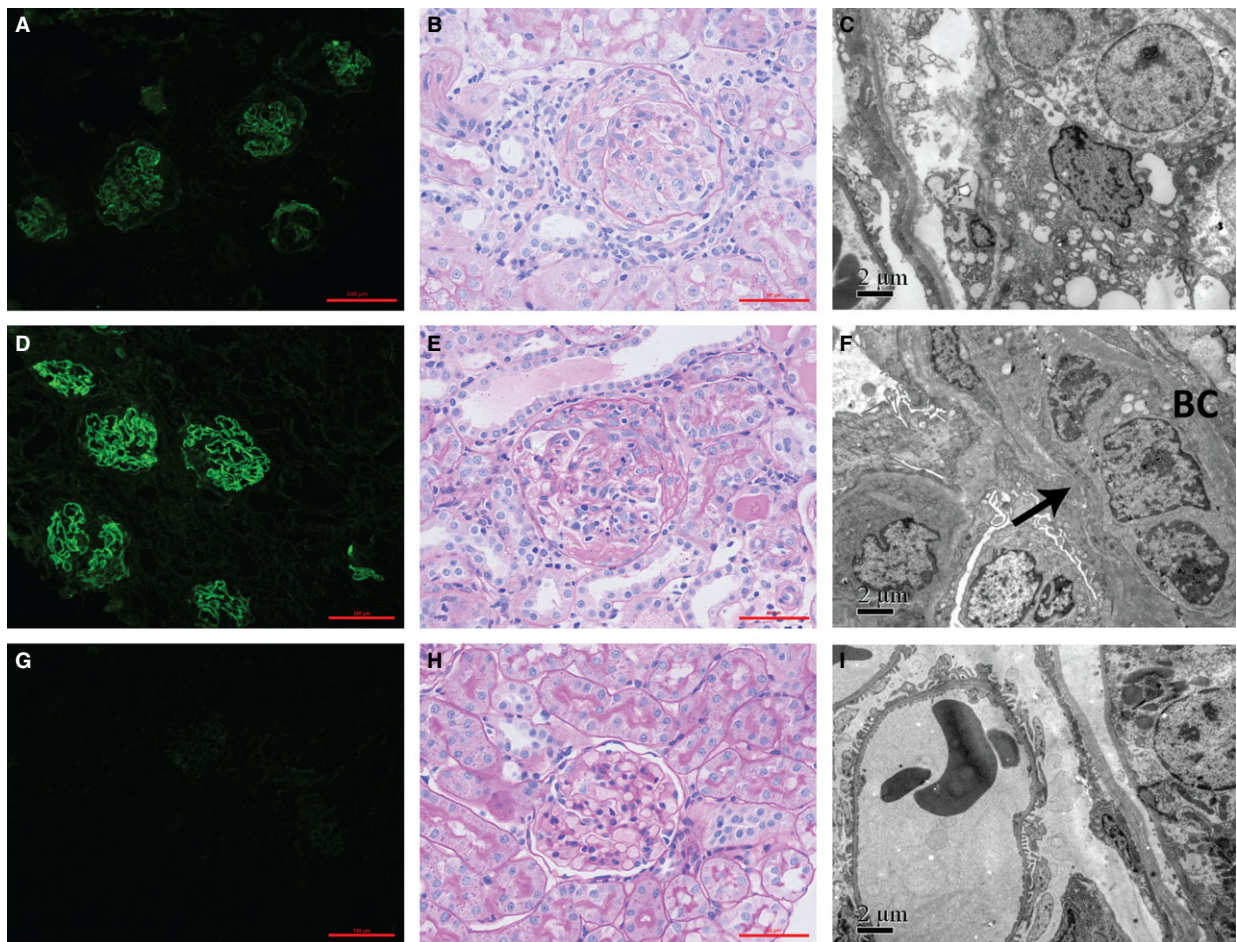


Fig. 2 P14 immunization on WKY rats induced severe crescentic glomerulonephritis. Immunofluorescent staining of IgG was detectable along GBM in positive controls (A) and P14 immunization rats (D), but not in negative controls (G). Crescent formation was observed in positive controls (B) and P14 immunization rats (E), but not in negative controls (H). On electron microscope, the fracture and shrinking of GBM was identified in the glomeruli with crescent formation in positive controls (C) and P14 immunization group (F), without electron dense deposits. No GBM damage was observed on electron microscope in negative controls (I). BC: Bowman's capsule.

Lymphocyte proliferation

Lymphocyte response to P14 and intact $\alpha 3(\text{IV})\text{NC1}$ were tested in nine rats immunized with P14 by proliferation assay using ^3H -thymidine. Lymphocytes from draining lymph nodes showed significant T cell proliferative responses to P14 (SI 3.7 ± 0.6 versus 1.3 ± 0.1 , $P = 0.014$) and $\alpha 3(\text{IV})\text{NC1}$ (SI 2.2 ± 0.1 versus 1.1 ± 0.2 , $P = 0.091$) compared to five rats of negative controls (Fig. 3D).

The core immunogenic region on P14 for inducing crescentic glomerulonephritis

P14 was truncated into three 13-mer peptides overlapping by eight amino acids, designated as P14a ($\alpha 3_{127-139}$), P14b ($\alpha 3_{132-144}$) and P14c ($\alpha 3_{137-149}$) to investigate the core immunogenic region on P14.

The rats immunized with P14b developed elevated levels of urinary protein (104.5 ± 39.7 versus 1.7 ± 0.3 mg/24 hrs, $P = 0.041$) and serum creatinine (117.4 ± 20.0 versus 84.3 ± 5.2 , $P = 0.104$) compared to negative controls (Fig. 4B and C). Kidney tissues showed linear deposits of IgG along GBM (Fig. 4D) and high percentage of crescent formation ($52.6 \pm 14.9\%$ versus $0.0 \pm 0.0\%$, $P = 0.012$; Fig. 4A,E and F). The rats immunized with P14c showed slightly elevated levels of urinary protein (30.4 ± 27.3 versus 1.7 ± 0.3 mg/24 hrs, $P = 0.353$; Fig. 4B) and crescent formation ($18.1 \pm 16.4\%$ versus $0.0 \pm 0.0\%$, $P = 0.333$; Fig. 4A), but the differences were not statistical significant compared to negative controls. No rats immunized with P14a developed any kidney injury.

All rats produced antibodies targeting the immunogens, but only the rats immunized by P14b developed antibodies towards the intact human $\alpha 3(\text{IV})\text{NC1}$ (Fig. 4H), while the rats immunized by P14a or P14c did not (Fig. 4G and I).

Identification of critical amino acid residues on P14

To determine critical motif from the 22 amino acid residues on P14, each amino acid of P14 was substituted by alanine in a sequential order and 21 new peptides were resynthesized after substitution (Table 2). The peptide with lysine₁₄₁ substituted by alanine was failed for synthesis because of its strong hydrophobicity.

Twenty-one groups (five rats per group) of rats were immunized with the series of amino acid mutation peptides. EAG was evaluated in each group. Critical amino acid was identified by the loss of nephritogenic function after substitution, resulting neither crescent formation in kidney nor clinical manifestations of proteinuria or rise of serum creatinine or BUN.

We found that when tryptophan (W_{136}), isoleucine (I_{137}), leucine (L_{139}), tryptophan (W_{140}) or phenylalanine (F_{143}) were substituted by alanine, the mutated P14 lost its nephritogenicity. No rat developed EAG after the immunization with P14 possessing any of the above amino acid mutations (Fig. 5, Table S1). The urinary protein excretion (1.9 ± 0.2 mg/24 hrs), serum creatinine concentration (61.9 ± 3.0 $\mu\text{mol/l}$) and BUN (7.0 ± 0.3 mmol/l) were all in normal range in the animals immunized with the five above-mentioned mutated peptides. No rat developed crescent in the glomeruli, nor IgG staining on the kidney.

P14 with other amino acid substitutions could induce EAG in at least one rat of its group.

Epitope spreading and kidney injury

The associations between epitope spreading to $\alpha 3(\text{IV})\text{NC1}$ and the severity of kidney injury were further analysed. Serum antibody productions were detected for all groups. We found that the rats

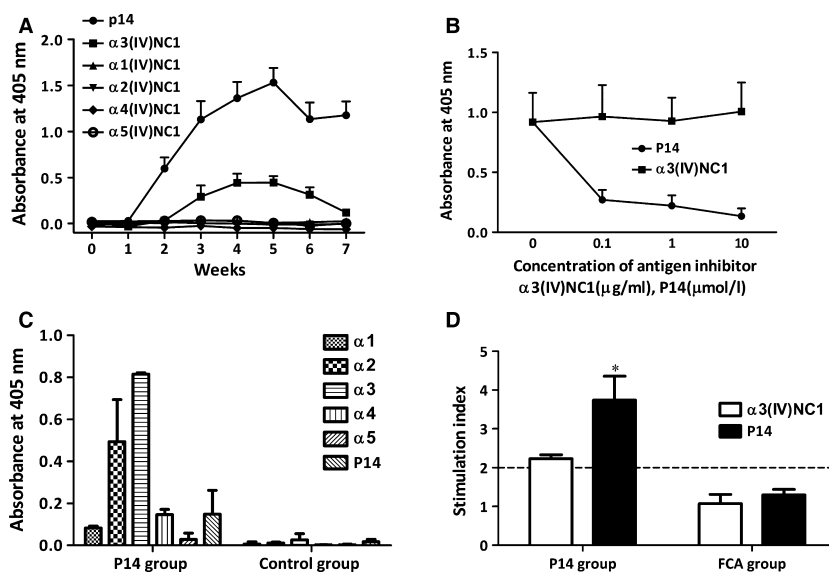


Fig. 3 Immune responses to the P14 immunization on WKY rats. Serum antibodies from P14-immunized rats recognized the immunogen peptide P14 and human $\alpha 3(\text{IV})\text{NC1}$ protein (A). The binding between anti-P14 antibodies and P14 was inhibited by P14 itself but not by $\alpha 3(\text{IV})\text{NC1}$, using antigen inhibition ELISA (B). The elutes from P14-immunization rat kidneys recognized P14, human $\alpha 3(\text{IV})\text{NC1}$ and $\alpha 2(\text{IV})\text{NC1}$ (C). Antigen-specific lymphocyte proliferations towards P14 and $\alpha 3(\text{IV})\text{NC1}$ were detectable in P14-immunization rats, but not in negative controls (D). Cut-off line (..) showed the level taken as representing positive response (SI = 2.0). * $P = 0.014$ compared with negative control.

immunized with P14 having amino acid substitutions of W₁₃₆, I₁₃₇, L₁₃₉ or W₁₄₀ developed antibodies against the immunogen itself, but no antibody towards the intact $\alpha 3(\text{IV})\text{NC1}$. The rats immunized with F₁₄₃ mutation peptide produced no serological reaction to either the immunogen or $\alpha 3(\text{IV})\text{NC1}$ (Fig. 6). In other groups of rats which developed crescentic glomerulonephritis after the immunization of mutated peptides, both anti-immunogen and anti- $\alpha 3(\text{IV})\text{NC1}$ antibodies were produced.

The percentage of crescent formation in glomeruli (90.5 ± 2.6 versus $11.3 \pm 3.5\%$, $P < 0.001$), urinary protein excretion (131.5 ± 7.9 versus 17.3 ± 5.9 mg/24 hrs, $P < 0.001$), serum creatinine concentration (136.2 ± 9.1 versus 67.8 ± 3.0 $\mu\text{mol/l}$, $P < 0.001$) and BUN (39.5 ± 4.7 versus 8.1 ± 0.3 mmol/l, $P < 0.001$) were all significantly higher in the rats with antibodies

against both the immunogen and $\alpha 3(\text{IV})\text{NC1}$, compared with those with anti-immunogen antibodies alone (Fig. 7). Thus, the amino acid residues of W₁₃₆, I₁₃₇, L₁₃₉ and W₁₄₀ were identified as critical motif for the pathogenicity of P14, probably through the process of epitope spreading to $\alpha 3(\text{IV})\text{NC1}$ after immunization. F₁₄₃ might be more important for the immunogenicity of P14.

Discussion

In the present study, we identified that one T cell epitope P14, $\alpha 3_{127-148}$, could successfully induce crescentic glomerulonephritis and autoimmunity towards $\alpha 3(\text{IV})\text{NC1}$ after the immunization on WKY rats. The autoimmune disorders, clinical spectrum and kidney

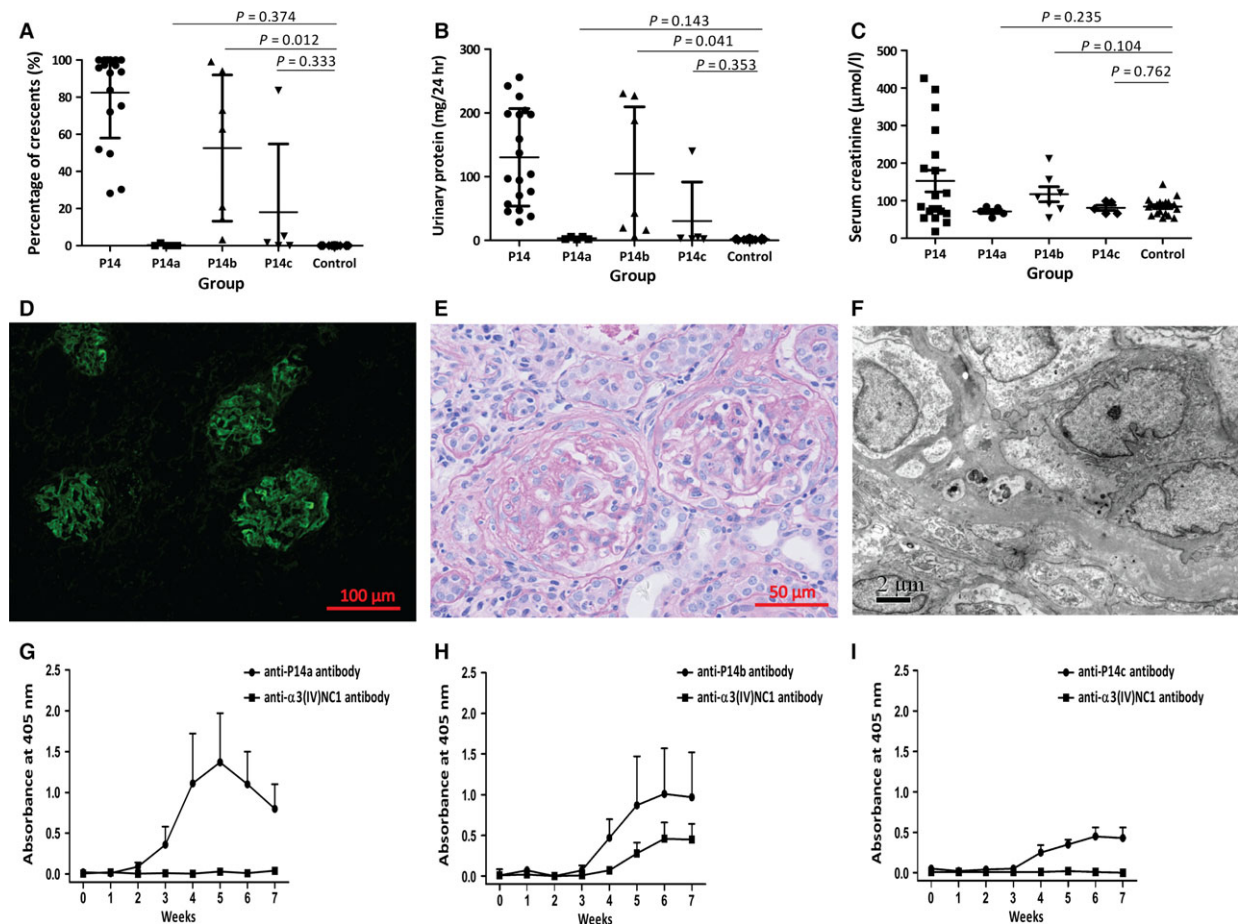


Fig. 4 The core immunogenic region on P14. P14 was truncated into three 13-mer peptides designated as P14a, P14b and P14c. High percentage of crescents were shown in the kidney tissues of rats immunized with P14b, but not with P14a or P14c (A). Urinary protein (B) was significantly increased in the rats immunized with P14b, but not with P14a or P14c. Serum creatinine (C) was also increased in the rats immunized with P14b, but not with P14a or P14c. The rats immunized with P14b showed linear IgG deposits along GBM on direct immunofluorescence (D), crescent formation on light microscope (E) and no electron dense deposit on electron microscope (F). The rats immunized with P14b developed antibodies against P14b itself as well as antibodies against the intact human $\alpha 3(\text{IV})\text{NC1}$ (H). The rats immunized with P14a or P14c only produced antibodies recognizing the immunogens themselves (G and I).

pathological features were in accordance to human Goodpasture disease. It is intriguing that one single immunization of the synthetic peptide could be sufficient to induce such a fulminant autoimmune disease. To our knowledge, it is the first time that one linear peptide within human $\alpha 3(\text{IV})\text{NC1}$ was proven to induce anti-GBM nephritis in WKY rats, which indicates that P14 contains nephritogenic T cell epitope(s). To some extent, these findings gave indirect evidence that P14 may also be nephritogenic for human Goodpasture disease. These findings will help us to understand the aetiology of Goodpasture disease, and more importantly to be useful for the potential development of specific immunotherapies based on the critical amino acid motif discovered in the current study.

P14, $\alpha 3_{127-148}$, is a special region on Goodpasture antigen. Its unique features might render its capacity to induce EAG: firstly, P14 is highly scissile to protease cathepsin D and E and could be easily destroyed in early antigen-presenting process under normal circumstances. Thus, P14 is a 'cryptic epitope' to human immune system [36, 37]. Secondly, P14 has a high binding affinity to HLA-DRB1*1501, a major susceptible allele for Goodpasture disease onset, which may be advantageous to the activation of P14-specific T cells once it is presented by antigen-presenting cells [31, 38, 39]. Thirdly, P14 contains the primary sequence of E_B , which is one of the two classical conformational epitopes recognized by anti-GBM antibodies. Our previous study in anti-GBM patients indicated that antibodies against E_B were an independent risk factor for renal failure [40].

In the current study, we found that P14 not only induced severe EAG but also initiated intramolecular epitope spreading, resulting in circulating antibodies against intact human $\alpha 3(\text{IV})\text{NC1}$ after the production of anti-P14 antibodies. These two kinds of antibodies had no cross-reaction, which indicated that antibodies against epitopes external to P14 on $\alpha 3(\text{IV})\text{NC1}$ evolved during disease progression. Moreover, the kidney elutes also confirmed the deposition of antibodies against $\alpha 3(\text{IV})\text{NC1}$ and $\alpha 2(\text{IV})\text{NC1}$ to a lesser extent. Epitope spreading was reported in other autoimmune animal models, including systemic lupus erythematosus, encephalomyelitis, multiple sclerosis and thyroiditis [31, 41–43]. Bolten *et al.* first described intramolecular B cell epitope spreading after the rats were immunized with a 13 amino acid T cell epitope [44]. In the present study, we proved that the T cell epitope P14 on $\alpha 3(\text{IV})\text{NC1}$ could induce B cell epitope spreading. Our previous study found that antibodies against P14 existed in the circulation of patients with anti-GBM disease. Therefore, P14 is the mutual epitope for both T cells and B cells. It was reasonable to deduce that P14 is the initial epitope for human Goodpasture disease, which induces diversified antibody responses external to itself.

We previously reported the observations that anti-GBM patients with more aggravated renal dysfunction had broader antigen spectrum compared to those with normal renal function [19]. In the present study, we found that all the 21 rats immunized with P14 developed antibody response to itself, but two of them did not develop antibodies to $\alpha 3(\text{IV})\text{NC1}$ and no kidney injury occurred. In all groups, proteinuria, serum creatinine, BUN and percentage of crescents in glomeruli were significantly higher in the rats with epitope spreading than those without. These findings imply that epitope

spreading is a possible causal step, which provokes the burst of the disease. An alternative explanation might be that P14 itself could fold into a three-dimensional structure, which was nephritogenic-like E_B . Further investigations are needed to elucidate it.

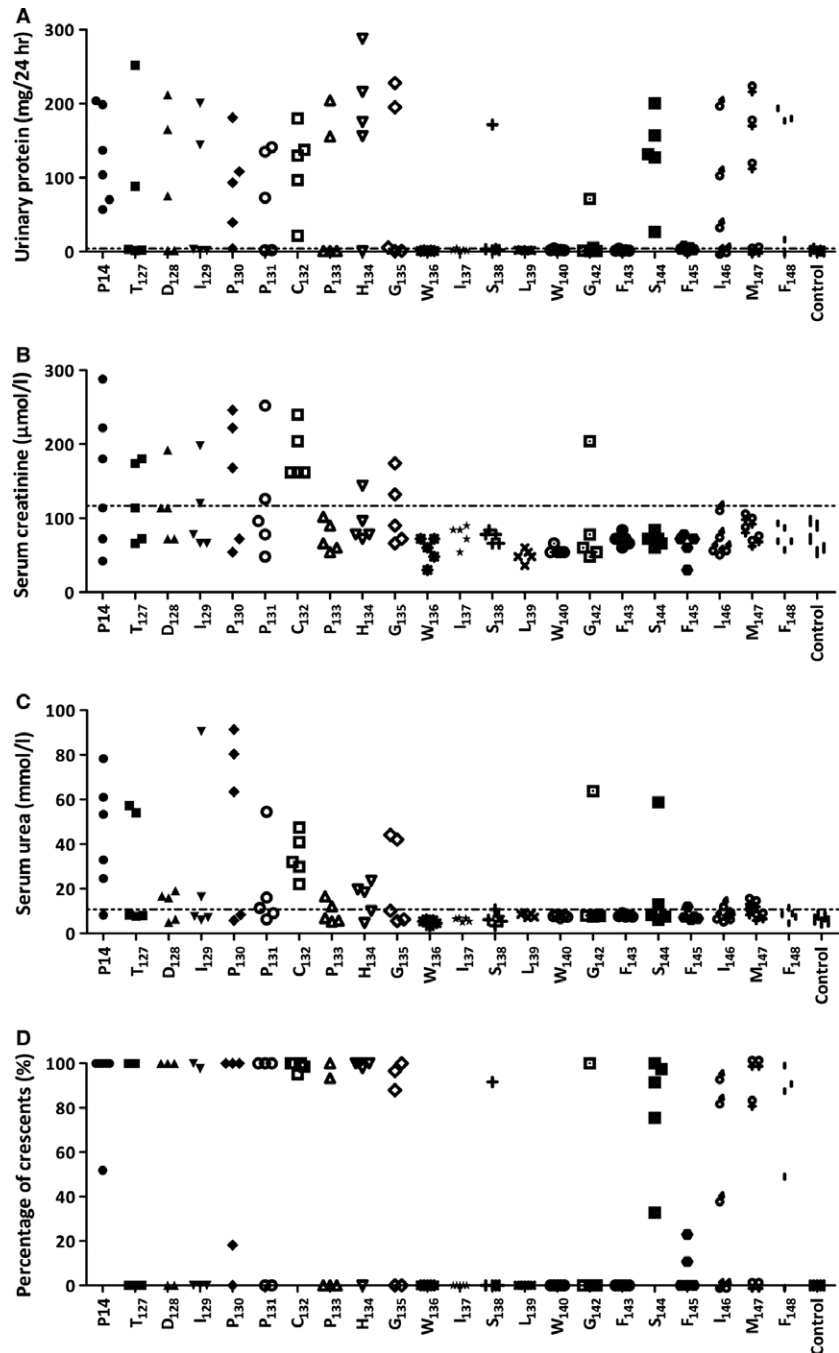
We further characterized the critical amino acid residues on P14 using amino acid substitution. The mutated P14 lost its pathogenic capacity with each substitution of W_{136} , I_{137} , L_{139} or W_{140} , failed to induce kidney disease or epitope spreading, but maintained the immunogenic character. These four amino acids were proposed to be the critical amino acid motif on P14. Using HLA-DRB1*1501 transgenic mice, Ooi *et al.* found that T cell activity

Table 2 Sequential residue substitution at each position of P14

Residue of substitution	Sequence from N-terminus	Position from N-terminus
P14	TDIPPCPHGWISLWKGFSFIMF	127–148
T	ADIPPCPHGWISLWKGFSFIMF	127
D	TAIPPCPHGWISLWKGFSFIMF	128
I	TDAPPCPHGWISLWKGFSFIMF	129
P	TDIAPPCPHGWISLWKGFSFIMF	130
P	TDIPACPHGWISLWKGFSFIMF	131
C	TDIPPAHGWISLWKGFSFIMF	132
P	TDIPPCAHWISLWKGFSFIMF	133
H	TDIPPCPAHWISLWKGFSFIMF	134
G	TDIPPCPHAWISLWKGFSFIMF	135
W	TDIPPCPHGAWISLWKGFSFIMF	136
I	TDIPPCPHGAWISLWKGFSFIMF	137
S	TDIPPCPHGWIALWKGFSFIMF	138
L	TDIPPCPHGWISAWKGFSFIMF	139
W	TDIPPCPHGWISLAKGFSFIMF	140
K	TDIPPCPHGWISLWAGFSFIMF*	141
G	TDIPPCPHGWISLWKAFSFIMF	142
F	TDIPPCPHGWISLWKGAFSIFIMF	143
S	TDIPPCPHGWISLWKGFAFIMF	144
F	TDIPPCPHGWISLWKGFSAIMF	145
I	TDIPPCPHGWISLWKGFSFAMF	146
M	TDIPPCPHGWISLWKGFSFIAMF	147
F	TDIPPCPHGWISLWKGFSFIMAF	148

*This sequence was not available for peptide synthesis due to hydrophobicity.

Fig. 5 Defining the critical residues on P14 peptide. WKY rats were immunized with alanine substituted 22-mers, with each peptide having one residue substitution in sequential order. Tryptophan₁₃₆, isoleucine₁₃₇, leucine₁₃₉, tryptophan₁₄₀ and phenylalanine₁₄₃ replaced peptides failed to induce EAG with proteinuria (A), elevated serum creatinine (B) or urea (C) or crescentic glomerulonephritis (D). The line (...) is the normal range from negative controls.



was lost by substitution of V₁₃₇, W₁₄₀, G₁₄₂ or F₁₄₃ [31]. Goodpasture antigen is a highly conservative protein during evolution, with overall 91% homology on amino acid sequence between human and rodent [45]. V137 is corresponding to I137 in human α 3(IV) NC1). I₁₃₇ and W₁₄₀ were found critical to pathogenicity in our present study. G₁₄₂ and F₁₄₃ were critical for B cell recognition in

Goodpasture patients as revealed in our previous study [35]. Tryptophan (W), isoleucine (I), leucine (L) and phenylalanine (F) were all hydrophobic amino acids, which were buried within α 3(IV)NC1 and normally inaccessible for antibody binding [46]. The bonds of W₁₃₆-I₁₃₇ and L₁₃₉-W₁₄₀ were sensible to protease and could easily be destroyed in antigen processing, which renders it as a 'cryptic'

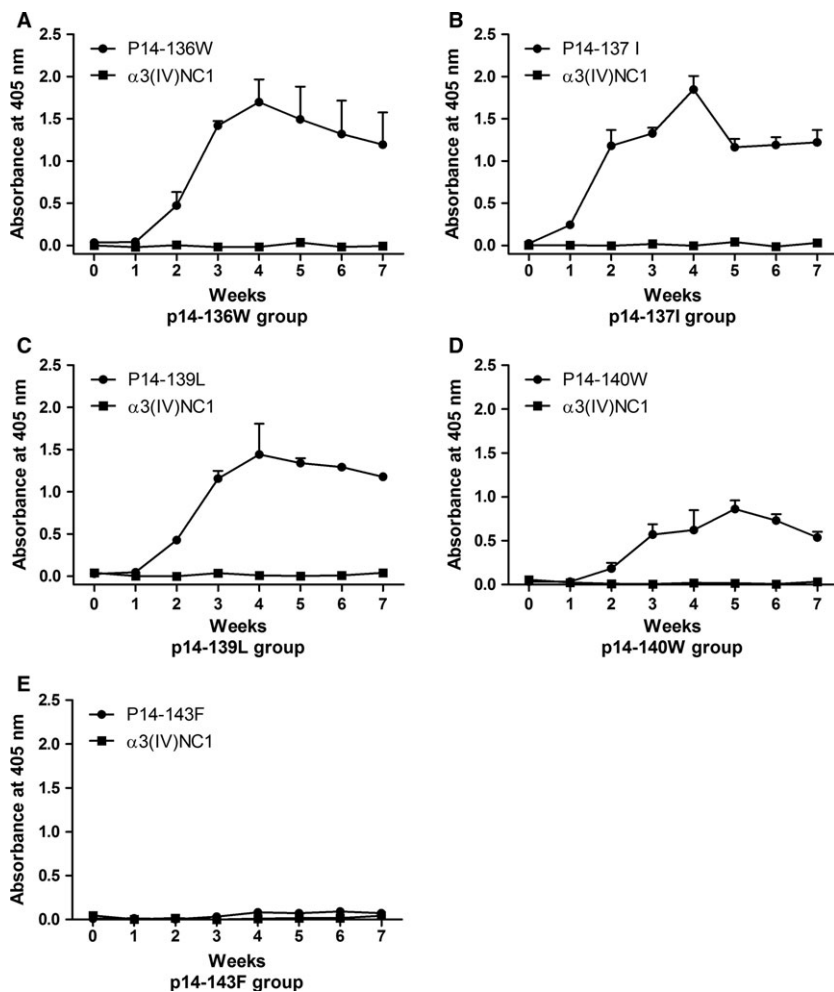


Fig. 6 Serum antibodies from the rats immunized with sequential amino acid substituted peptides. Serum antibody recognized the immunogen itself but not intact $\alpha 3(IV)NC1$ in the rats immunized with tryptophan₁₃₆, isoleucine₁₃₇, leucine₁₃₉ or tryptophan₁₄₀ substitution peptide of P14 (A–D). No antibody was found towards the immunogen or $\alpha 3(IV)NC1$ in the rats immunized with phenylalanine₁₄₃ substitution peptide of P14 (E).

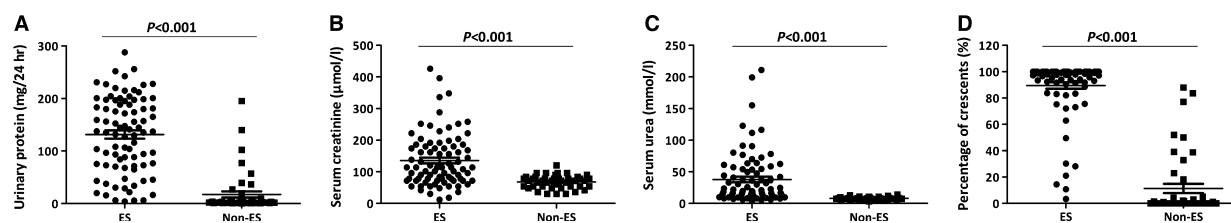


Fig. 7 Comparison of anti-GBM nephritis severity on WKY rats immunized with P14 and its mutations, between those possessing anti- $\alpha 3(IV)NC1$ antibodies and those not. The urinary protein excretion (A), serum creatinine concentration (B), blood urea nitrogen level (C) and the percentage of crescent formation (D) in glomeruli were all significantly higher in the rats with antibodies against both the immunogen and $\alpha 3(IV)NC1$, compared with those with anti-immunogen antibodies alone. ES: epitope spreading occurred from the immunogen to $\alpha 3(IV)NC1$. Non-ES: epitope spreading not occurred with anti-immunogen antibody alone.

T cell epitope [37]. These mechanisms might explain why these amino acid residues were critical for inducing autoimmune response, but further studies are still needed.

P14 with amino acid substitution for F₁₄₃ also failed to induce the disease by the loss of immunogenic character. We further truncated P14 into a 13-mer peptide including F₁₄₃, which was easier to be

presented by MHC molecules. Then, the peptide with substitution of F₁₄₃ maintained its pathogenic and immunogenic characters (data not shown); thus, F₁₄₃ was excluded to be one of the critical residues for pathogenicity.

In conclusion, we identified a nephritogenic T cell epitope on human Goodpasture antigen, designated as P14 ($\alpha 3_{127-148}$), which

not only induced severe anti-GBM nephritis but also initiated epitope spreading in WKY rats. The critical amino acid motif was W₁₃₆L₁₃₇X_{L139}W₁₄₀, which were hydrophobic and sensible to protease.

Acknowledgements

The technical support by Fu-sheng Yang, Ying-hong Tao and Shen-shen Kong was greatly appreciated. This work was supported by grants of Natural Science Foundation of China to the Innovation Research Group (81621092), the Outstanding Young Scholar (81622009) and other programs (81330020, 81370801, 81400703).

References

1. **Saus J, Wieslander J, Langeveld JP, et al.** Identification of the Goodpasture antigen as the alpha 3(IV) chain of collagen IV. *J Biol Chem.* 1988; 263: 13374–80.
2. **Pedchenko V, Bondar O, Fogo AB, et al.** Molecular architecture of the Goodpasture autoantigen in anti-GBM nephritis. *N Engl J Med.* 2010; 363: 343–54.
3. **Netzer KO, Leinonen A, Boutaud A, et al.** The goodpasture autoantigen. Mapping the major conformational epitope(s) of alpha3 (IV) collagen to residues 17-31 and 127-141 of the NC1 domain. *J Biol Chem.* 1999; 274: 11267–74.
4. **Borza DB, Hudson BG.** Molecular characterization of the target antigens of anti-glomerular basement membrane antibody disease. *Springer Semin Immunopathol.* 2003; 24: 345–61.
5. **Lerner RA, Glasscock RJ, Dixon FJ.** The role of anti-glomerular basement membrane antibody in the pathogenesis of human glomerulonephritis. *J Exp Med.* 1967; 126: 989–1004.
6. **Sado Y, Naito I, Okigaki T.** Transfer of anti-glomerular basement membrane antibody-induced glomerulonephritis in inbred rats with isologous antibodies from the urine of nephritic rats. *J Pathol.* 1989; 158: 325–32.
7. **Kalluri R, Danoff TM, Okada H, et al.** Susceptibility to anti-glomerular basement membrane disease and Goodpasture syndrome is linked to MHC class II genes and the emergence of T cell-mediated immunity in mice. *J Clin Invest.* 1997; 100: 2263–75.
8. **Kohda T, Okada S, Hayashi A, et al.** High nephritogenicity of monoclonal antibodies belonging to IgG2a and IgG2b subclasses in rat anti-GBM nephritis. *Kidney Int.* 2004; 66: 177–86.
9. **Lockwood CM, Rees AJ, Pearson TA, et al.** Immunosuppression and plasma-exchange

- in the treatment of Goodpasture's syndrome. *Lancet.* 1976; 1: 711–5.
10. **Bolton WK, Innes DJ, Sturgill BC, et al.** T-cells and macrophages in rapidly progressive glomerulonephritis: clinicopathologic correlations. *Kidney Int.* 1987; 32: 869–76.
11. **Hu SY, Jia XY, Li JN, et al.** T cell infiltration is associated with kidney injury in patients with anti-glomerular basement membrane disease. *Sci China Life Sci.* 2016; 59: 1282–89.
12. **Fisher M, Pusey CD, Vaughan RW, et al.** Susceptibility to anti-glomerular basement membrane disease is strongly associated with HLA-DRB1 genes. *Kidney Int.* 1997; 51: 222–9.
13. **Phelps RG, Rees AJ.** The HLA complex in Goodpasture's disease: a model for analyzing susceptibility to autoimmunity. *Kidney Int.* 1999; 56: 1638–53.
14. **Kitagawa W, Imai H, Komatsuda A, et al.** The HLA-DRB1*1501 allele is prevalent among Japanese patients with anti-glomerular basement membrane antibody-mediated disease. *Nephrol Dial Transplant.* 2008; 23: 3126–9.
15. **Yang R, Cui Z, Zhao J, et al.** The role of HLA-DRB1 alleles on susceptibility of Chinese patients with anti-GBM disease. *Clin Immunol.* 2009; 133: 245–50.
16. **Cui Z, Zhao MH.** Avidity of anti-glomerular basement membrane autoantibodies was associated with disease severity. *Clin Immunol.* 2005; 116: 77–82.
17. **Cui Z, Wang HY, Zhao MH.** Natural autoantibodies against glomerular basement membrane exist in normal human sera. *Kidney Int.* 2006; 69: 894–9.
18. **Yang R, Cui Z, Hellmark T, et al.** Natural anti-GBM antibodies from normal human sera recognize alpha3(IV)NC1 restrictively and recognize the same epitopes as

- anti-GBM antibodies from patients with anti-GBM disease. *Clin Immunol.* 2007; 124: 207–12.
19. **Zhao J, Cui Z, Yang R, et al.** Anti-glomerular basement membrane autoantibodies against different target antigens are associated with disease severity. *Kidney Int.* 2009; 76: 1108–15.
20. **Zhao J, Yan Y, Cui Z, et al.** The immunoglobulin G subclass distribution of anti-GBM autoantibodies against rAlpha3 (IV)NC1 is associated with disease severity. *Hum Immunol.* 2009; 70: 425–9.
21. **Wu J, Hicks J, Ou C, et al.** Glomerulonephritis induced by recombinant collagen IV alpha 3 chain noncollagen domain 1 is not associated with glomerular basement membrane antibody: a potential T cell-mediated mechanism. *J Immunol.* 2001; 167: 2388–95.
22. **Wu J, Borillo J, Glass WF, et al.** T-cell epitope of alpha3 chain of type IV collagen induces severe glomerulonephritis. *Kidney Int.* 2003; 64: 1292–301.
23. **Wu J, Arends J, Borillo J, et al.** A self T cell epitope induces autoantibody response: mechanism for production of antibodies to diverse glomerular basement membrane antigens. *J Immunol.* 2004; 172: 4567–74.
24. **Arends J, Wu J, Borillo J, et al.** T cell epitope mimicry in anti-glomerular basement membrane disease. *J Immunol.* 2006; 176: 1252–8.
25. **Reynolds J, Tam FW, Chandraker A, et al.** CD28-B7 blockade prevents the development of experimental autoimmune glomerulonephritis. *J Clin Invest.* 2000; 105: 643–51.
26. **Reynolds J, Khan SB, Allen AR, et al.** Blockade of the CD154-CD40 costimulatory pathway prevents the development of experimental autoimmune glomerulonephritis. *Kidney Int.* 2004; 66: 1444–52.

Disclosure

All the authors declared no competing interests.

Supporting information

Additional Supporting Information may be found online in the supporting information tab for this article:

Table S1. Clinical spectrum of rats immunized with substituted peptides derived from P14.

27. **Reynolds J, Norgan VA, Bhambra U, et al.** Anti-CD8 monoclonal antibody therapy is effective in the prevention and treatment of experimental autoimmune glomerulonephritis. *J Am Soc Nephrol.* 2002; 13: 359–69.
28. **Reynolds J, Pusey CD.** Oral administration of glomerular basement membrane prevents the development of experimental autoimmune glomerulonephritis in the WKY rat. *J Am Soc Nephrol.* 2001; 12: 61–70.
29. **Reynolds J, Prodromidi EI, Juggapah JK, et al.** Nasal administration of recombinant rat alpha3(IV)NC1 prevents the development of experimental autoimmune glomerulonephritis in the WKY rat. *J Am Soc Nephrol.* 2005; 16: 1350–9.
30. **Cairns LS, Phelps RG, Bowie L, et al.** The fine specificity and cytokine profile of T-helper cells responsive to the alpha3 chain of type IV collagen in Goodpasture's disease. *J Am Soc Nephrol.* 2003; 14: 2801–12.
31. **Ooi JD, Chang J, O'Sullivan KM, et al.** The HLA-DRB1*15:01-restricted Goodpasture's T cell epitope induces GN. *J Am Soc Nephrol.* 2013; 24: 419–31.
32. **Reynolds J, Haxby J, Juggapah JK, et al.** Identification of a nephritogenic immunodominant B and T cell epitope in experimental autoimmune glomerulonephritis. *Clin Exp Immunol.* 2009; 155: 311–9.
33. **Luo AM, Fox JW, Chen L, et al.** Synthetic peptides of Goodpasture's antigen in antglomerular basement membrane nephritis in rats. *J Lab Clin Med.* 2002; 139: 303–10.
34. **Phelps RG, Jones VL, Coughlan M, et al.** Presentation of the Goodpasture autoantigen to CD4 T cells is influenced more by processing constraints than by HLA class II peptide binding preferences. *J Biol Chem.* 1998; 273: 11440–7.
35. **Jia XY, Cui Z, Yang R, et al.** Antibodies against linear epitopes on the Goodpasture autoantigen and kidney injury. *Clin J Am Soc Nephrol.* 2012; 7: 926–33.
36. **Zou J, Hannier S, Cairns LS, et al.** Healthy individuals have Goodpasture autoantigen-reactive T cells. *J Am Soc Nephrol.* 2008; 19: 396–404.
37. **Zou J, Henderson L, Thomas V, et al.** Presentation of the Goodpasture autoantigen requires proteolytic unlocking steps that destroy prominent T cell epitopes. *J Am Soc Nephrol.* 2007; 18: 771–9.
38. **Saxena R, Bygren P, Butkowski R, et al.** Specificity of kidney-bound antibodies in Goodpasture's syndrome. *Clin Exp Immunol.* 1989; 78: 31–6.
39. **Phelps RG, Jones V, Turner AN, et al.** Properties of HLA class II molecules divergently associated with Goodpasture's disease. *Int Immunol.* 2000; 12: 1135–43.
40. **Chen JL, Hu SY, Jia XY, et al.** Association of epitope spreading of antglomerular basement membrane antibodies and kidney injury. *Clin J Am Soc Nephrol.* 2013; 8: 51–8.
41. **Thrasivoulides A, Lymberi P.** Evidence for intramolecular B-cell epitope spreading during experimental immunization with an immunogenic thyroglobulin peptide. *Clin Exp Immunol.* 2003; 132: 401–7.
42. **Monneaux F, Muller S.** Epitope spreading in systemic lupus erythematosus: identification of triggering peptide sequences. *Arthritis Rheum.* 2002; 46: 1430–8.
43. **Lou YH.** Anti-GBM glomerulonephritis: a T cell-mediated autoimmune disease? *Arch Immunol Ther Exp (Warsz).* 2004; 52: 96–103.
44. **Bolton WK, Chen L, Hellmark T, et al.** Epitope spreading and autoimmune glomerulonephritis in rats induced by a T cell epitope of Goodpasture's antigen. *J Am Soc Nephrol.* 2005; 16: 2657–66.
45. **Ryan JJ, Katbanna I, Mason PJ, et al.** Sequence analysis of the 'Goodpasture antigen' of mammals. *Nephrol Dial Transplant.* 1998; 13: 602–7.
46. **David M, Borza DB, Leinonen A, et al.** Hydrophobic amino acid residues are critical for the immunodominant epitope of the Goodpasture autoantigen. A molecular basis for the cryptic nature of the epitope. *J Biol Chem.* 2001; 276: 6370–7.