

ORIGINAL RESEARCH

Open Access

Gut microbiota and physiologic bowel ^{18}F -FDG uptake



Ji Yeon Kang¹, Han-Na Kim², Yoosoo Chang³, Yeojun Yun², Seungho Ryu³, Hocheol Shin^{4*} and Hyung-Lae Kim^{2*}

Abstract

Background: We investigated the association between physiologic bowel FDG uptake and gut microbiota. FDG uptake in the normal large and small intestine is widely variable both in distribution and intensity. The etiology of physiologic bowel ^{18}F -FDG activity remains unknown.

Results: We included 63 healthy male subjects. After overnight fasting, blood samples and ^{18}F -FDG PET/CT scans were taken. Fecal samples were collected, and gut microbiota were analyzed by 16S rRNA gene-pyrosequencing. The physiologic bowel FDG uptake was classified into three groups by visual assessment and measured using the maximum and mean standardized uptake value. We used the total bowel to liver uptake ratio (TBR_{max} and TBR_{mean}). There was no significant difference in age, BMI, or lipid profiles between groups. To identify specific microbial taxa associated with the bowel FDG uptake while accounting for age and BMI, we performed a generalized linear model. At the genus level, the group with focal or intense FDG uptake in the intestine was associated with low abundance of unclassified Clostridiales. The group with intestinal FDG uptake lower than the liver was associated with high abundance of *Klebsiella*. TBR_{max} and TBR_{mean} were negatively associated with abundance of unclassified Enterobacteriaceae.

Conclusion: We cautiously speculate that physiologic bowel FDG activity might be caused by an increase in intestinal permeability and may reflect an impaired barrier function in the intestine.

Keywords: ^{18}F -FDG PET, Gut microbiota, Physiologic, Intestinal, Permeability

Background

^{18}F -FDG PET/CT is a useful tool in the evaluation of colonic malignancy and inflammatory bowel disease. FDG uptake in the normal large and small intestine is widely variable both in distribution and intensity. Uncommonly, it appears as focal activity, which makes it difficult to discriminate between malignancy and normal bowel tissue. Further investigations may be needed to exclude the possibility of malignancy, and these require additional time and cost.

The etiology of bowel FDG activity without pathologic lesions, also called “physiologic bowel uptake or activity”,

is not thoroughly understood. Some previous studies have attempted to identify the cause of physiologic bowel FDG activity. Kim et al. demonstrated that ^{18}F -FDG was located in the intestinal lumen by measuring the FDG activity of stool samples [1]. Soyka et al. reported that bowel preparation using a senna-glycoside solution before ^{18}F -FDG PET/CT increased physiologic FDG activity in colonic structures, except for the sigmoid and rectum [2]. They postulated that ^{18}F -FDG secretion was the main cause of physiologic activity. Senna-glycoside increases intestinal secretory activity by activation of chloride channels in the bowel wall. Tohihara et al. reported that physiologic bowel FDG uptake was increased more at the delayed phase than at the early phase in dual-time-point PET/CT imaging [3]. They also suggested that FDG secretion from the bowel wall may be related to physiologic uptake.

Franquet et al. reported that physiologic bowel FDG uptake was suppressed by antibiotics, such as rifaximin [4]. They suggested that bacteria play a role in accumulating FDG and may ingest FDG that has migrated into

* Correspondence: hcfm.shin@samsung.com; hyung@ewha.ac.kr
Ji Yeon Kang and Han-Na Kim are first authors and contributed equally to this work.

⁴Department of Family Medicine, Kangbuk Samsung Hospital, Sungkyunkwan University School of Medicine, 29, Saemunan-ro, Jongno-gu, Seoul 03181, South Korea

²Department of Biochemistry, Ewha Womans University, School of Medicine, 1071, Anyangcheon-ro, Yangcheon-gu, Seoul 07985, South Korea
Full list of author information is available at the end of the article

the intestinal lumen via transcellular translocation. This suggestion alone cannot account for individual differences in physiologic bowel FDG uptake. We hypothesized that the variability of intestinal FDG uptake may depend on a specific type of bacteria in the lumen. The relationship between intestinal FDG uptake and gut microbiota was investigated using high-throughput sequencing of the 16S rRNA gene in healthy male subjects.

Methods

Subjects

Participants were recruited from the Kangbuk Samsung Health Study, which is a cohort study of Korean men and women who undergo a comprehensive annual or biennial examination at Kangbuk Samsung Hospital Screening Centers in South Korea. Stool samples were collected from 1463 adult participants (men: 907, women: 556) between the ages of 23 and 78 who underwent a comprehensive health checkup between June 2014 and September 2014. Among them, 76 males and 5 females had completed PET images and only males were included in this study.

Inclusion and exclusion criteria

Participants who met any of the exclusion criteria were not enrolled in this study. We excluded one participant with less than 5000 sequences per sample and five participants with antibiotic use within 6 weeks prior to enrollment, regular use of statins, or probiotic use within 4 weeks prior to enrollment. To avoid bowel FDG uptake caused by Metformin, we excluded six participants who had diabetes, were taking a medication for diabetes, or had a fasting glucose level ≥ 126 mg/dL. We excluded a participant showing a hot spot at the left femur in an ^{18}F -FDG PET/CT image, which is suspicious for a benign or malignant tumor. Finally, 63 participants (100% male) with a mean of 25,077 sequences per sample were included.

Measurements

Medical history was collected through a self-administered questionnaire. Body mass index (BMI) was calculated as weight in kilograms divided by height in meters squared. After fasting overnight, blood samples were taken from the antecubital vein before the ^{18}F -FDG PET/CT scan. Serum glucose, HbA1c, total cholesterol, triglycerides, uric acid, high-density lipoprotein, low-density lipoprotein, high-sensitivity C-reactive protein, free T4, free T3, and TSH were measured according to standard procedures.

PET/CT protocol

Participants were asked to fast overnight before PET/CT scan. Blood glucose levels at the time of injection of ^{18}F -FDG were lower than 160 mg/dl. PET/CT scans were

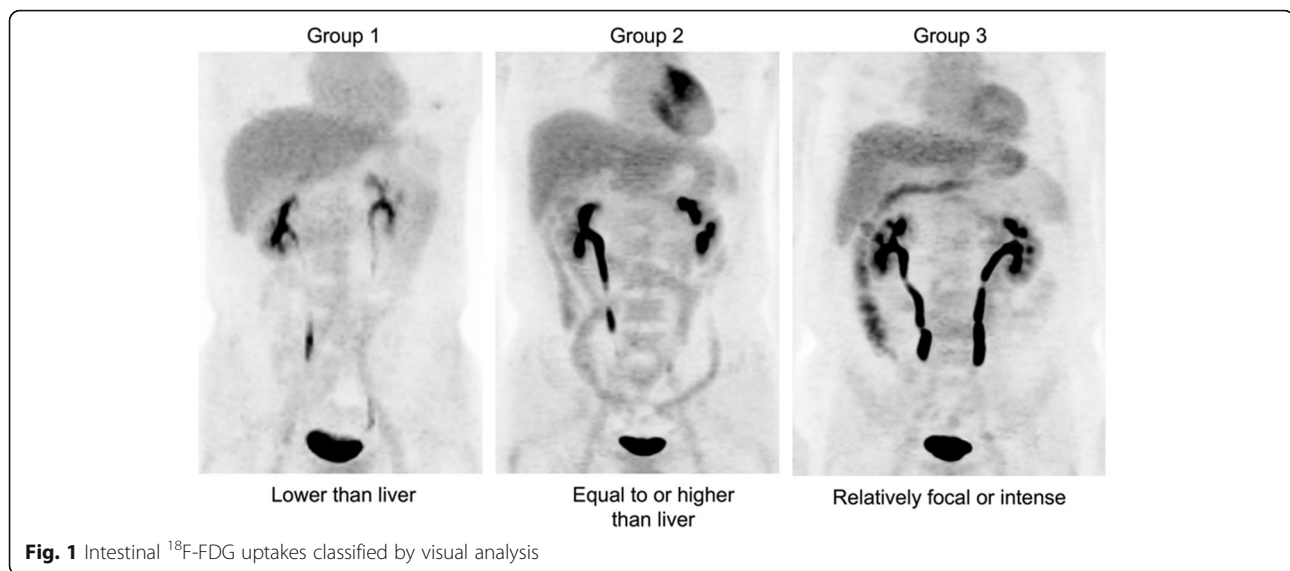
performed on Discovery D600 (for 57 subjects) or Discovery STE scanners (for 6 subjects) (GE Medical Systems, Waukesha, WI, USA) with a tracer uptake time of 60 min. ^{18}F -FDG was injected based on weight (0.1 mCi/kg on the D600 scanner, 10–13 mCi on the STE scanner). No intravenous contrast agent was given. For the Discovery D600 scanner, slice thickness was 3.75 mm, current was 40–120 mAs, and energy was 120 kVp. For the Discovery STE scanner, slice thickness was 3.3 mm, current was 40–200 mAs, and energy was 140 kVp. Following CT acquisition, a PET emission scan was acquired with an acquisition time of 2.5–3 min per bed in 3D mode from the proximal thigh to the skull base. CT data were used for attenuation correction. The images were reconstructed using a conventional iterative algorithm (OSEM). Using dedicated software (Advanced Workstation, GE Healthcare, Milwaukee, WI, USA), CT, PET, and fused PET/CT images were reviewed.

Image analysis

We assessed intestinal ^{18}F -FDG uptake by visual analysis and quantitative analysis. For the visual analysis, we classified subjects into three groups. Group 1 included subjects with intestinal FDG uptake lower than liver FDG uptake. Group 2 included subjects with intestinal FDG uptake equal to or higher than liver FDG uptake; among group 2 subjects, subjects with relatively focal or intense FDG uptake in the intestine were reclassified as group 3 (Fig. 1). For the quantitative analysis, we measured maximum and mean standardized uptake values (SUV_{max} and SUV_{mean}) in each segment of the intestine using a three-dimensional volume of interest (VOI). The intestine was divided as follows: third portion of the duodenum, jejunum, ileal loop, ileocecal junction, ascending colon, transverse colon, descending colon, and sigmoid colon. The SUV_{mean} of each segment was measured with a margin threshold of 60% SUV_{max} [5]. After SUV measurement, we added all the segment values, which indicated the SUVs of the total bowel: TB SUV_{max} and TB SUV_{mean} . For the measurement of liver SUV_{mean} , we drew 3 cm VOIs in both lobes of the liver as previously reported [6]. The uptake ratio of TB SUV_{max} and TB SUV_{mean} to liver SUV_{mean} (TB to liver uptake ratio, TBR_{max} and TBR_{mean}) was calculated for each subject.

Fecal samples and DNA extraction

Fecal samples were immediately frozen after defecation at -20 °C and were placed at -70 °C within 24 h. Within 1 month, the stool specimens were vortexed to achieve a homogenous suspension and homogenized to isolate DNA using the PowerSoil® DNA Isolation Kit (MO BIO Laboratories, Carlsbad, CA) according to the manufacturer's instructions.



PCR amplification and sequencing of the 16S rRNA gene

Variable V3 and V4 regions of the 16S rRNA were amplified with the universal primers F319 (5' TCGTCGGCAGCGTC AGATGTGTATAAGAGACAG) and R806 (5'–GGACT ACHVGGGTWCTAAT–3') [7], with each primer modified to contain a unique 8-nt barcode index by combination with the NexteraR XT DNA Library Preparation kit (Illumina, San Diego, CA). PCR reactions contained 5 ng/μL of DNA template, 2× KAPA HiFi HotStart Ready Mix (KAPA Biosystems, Wilmington, MA), and 2 pmol of each primer. Reaction conditions consisted of an initial incubation at 95 °C for 3 min, followed by 25 cycles of 95 °C for 30 s, 55 °C for 30 s, and 72 °C for 30 s. Samples were subjected to a final extension incubation at 72 °C for 5 min. After PCR clean-up and index PCR, sequencing was performed on the Illumina MiSeq platform according to the manufacturer's specifications [8, 9]. The 100 bp of overlapping paired-end reads were merged using PandaSeq (version 2.7). To analyze the 16S rRNA gene sequence, quality filtering, including determination of the sequence length (>300 bp), end trimming, and determination of the number of ambiguous bases and the minimum quality score were performed using Trimmomatic (version 0.32).

Sequence analysis using QIIME

Chimeras were detected and removed using USERCH 6.1 within the QIIME package (version 1.9) [10]. To identify OTUs from the non-chimeric sequences, an open-reference OTU picking approach was performed using representative sequences with pre-assigned taxonomy from Greengenes (version 13_8) [11]. This analysis was performed in QIIME, with a 97% similarity threshold. In an open-reference OTU picking process, reads are clustered against a reference sequence collection, and any reads that do not hit the reference

sequence collection are subsequently clustered de novo. The initial data set for all 1463 samples included 278,619 OTUs, and the sequencing depth ranged from 38 to 137,059 reads per sample (mean = 24,644, SD = 17,384). OTUs with <0.005% of the total number of sequences were discarded as recommended by Navas-Molina et al. [12] for downstream analysis, resulting in 1011 OTUs.

Statistical analysis

For cross-sectional analyses of baseline characteristics, differences were evaluated using the Kruskal-Wallis test and the Spearman correlation test. STATA version 13.0 (StataCorp LP, College Station, Texas, USA) was used for these analyses. All statistical analyses were performed in RStudio (version 0.98.983) using packages phyloseq 1.14.0 [13], DESeq2 1.10.1 [14] and ggplot2 2.1.0 [15]. We compared the composition and structure of the gut microbiota between group 1 vs. 2, group 1 vs. 3, group 2 vs. 3, group 1 vs. 2 and 3, and groups 1 and 2 vs. 3. Various indices (Richness: Chao1, ACE; richness and evenness: Shannon, InvSimpson) were obtained using the estimate_richness function of the phyloseq package with untrimmed datasets for meaningful results, as described by the phyloseq manual. Statistical tests for alpha diversity among groups of ¹⁸F-FDG uptake were performed using the *t* test and Wilcoxon rank-sum test with the mentioned indices. Beta diversity was obtained using the ordinate function of the phyloseq package. For beta diversity analysis, we normalized OTU matrices with a cumulative sum scaling (CSS) approach [16]. To identify factors that could drive groupings of similar communities, principal coordinate analysis (PCoA) was performed on the Bray-Curtis matrices generated from beta diversity calculation, and the resulting PCoA plots were

visualized using the phyloseq. The Bray–Curtis index of similarity was calculated to investigate the similarity of microbiota composition between different samples.

To determine statistically significant differences between samples from groups 1, 2, and 3, taxa seen more than three times in at least 10% of the samples were removed from the analyses to protect against an OTU with a small mean and a trivially large coefficient of variation. The number of OTU-mapped reads was normalized across all samples using the variance-stabilized transformation method as implemented in DESeq2 using a generalized linear model (GLM). Statistical inference was conducted using the negative binomial GLM fitting and Wald significance tests. We adjusted for age and BMI by including them as covariates in the linear model. The resulting *p* values were corrected for multiple comparisons at each phylogenetic level using the Benjamini-Hochberg correction (FDR). Significant findings were reported for OTUs that had fold changes exceeding two in any group and significant statistical associations (FDR *q* < 0.05).

Results

Participant characteristics

All the subjects had no history of cancer, diabetes, heart disease including coronary disease, stroke, or inflammatory bowel disease. Four of 63 subjects had a history of hypertension. Participant characteristics are summarized in Table 1. The mean age was 44.7 (range 39–58) years. Twenty-six subjects (41%) were in group 1, 20 (31%)

were in group 2, and 17 (27%) were in group 3. There was no significant difference in age and body mass index (BMI) between groups. There were significant differences in HbA1c, C-reactive protein (CRP), and Free T4 between the groups. Serum glucose and lipid profiles showed no significant differences. Measured values for the quantitative analysis, TBR_{max} and TBR_{mean}, showed strong significant differences between groups sorted by visual analysis. In the Spearman correlation test, TBR_{max} and TBR_{mean} were evaluated with age, BMI and laboratory data. There was no significant correlation between them.

The 16S RNA gene sequencing produced 1,579,858 sequences across 63 samples. The average number of sequences was 22,331, 23,923, and 30,636 for groups 1, 2, and 3, respectively. The number of generated sequences was not affected by grouping for intestinal ¹⁸F-FDG uptake (*p* = 0.29).

¹⁸F-FDG uptake and alpha and beta diversity in the gut microbiome

Maintaining sufficient bacterial richness and diversity is important for providing gut microbiota with functional redundancy, adaptability, and thus systematic robustness against environmental challenges [17]. Using a total of 1,579,858 qualified sequences, we estimated bacterial richness and evenness. The Chao1 and ACE indices for alpha diversity were used to estimate the number of species (richness) in the microbiome, with correction for subsampling and metrics that aim to measure diversity

Table 1 Demographic, laboratory and TBR data by visual grade of intestinal FDG uptake

	Group 1 (<i>n</i> = 26)	Group 2 (<i>n</i> = 20)	Group 3 (<i>n</i> = 17)	<i>p</i> value
Age (years)	43.8 ± 4.5	45.5 ± 3.8	45.2 ± 5.4	0.17
BMI (kg/m ²)	24.8 ± 1.8	23.7 ± 2.4	25.2 ± 2.6	0.09
Fasting Glucose (mg/dl)	92.3 ± 9.3	90.8 ± 6.1	95.4 ± 6.8	0.17
HbA1c(%)	5.47 ± 0.18	5.36 ± 0.16	5.39 ± 0.19	0.04*
Cholesterol (mg/dl)	210.5 ± 31.2	189.9 ± 29.5	208 ± 38.3	0.15
Triglyceride (mg/dl)	131.8 ± 72.7	132.7 ± 94.2	150.8 ± 73.3	0.28
HDL (mg/dl)	53.9 ± 9.8	49.5 ± 11.3	52.9 ± 12.2	0.44
LDL (mg/dl)	134.4 ± 26.5	116.7 ± 25.6	130.2 ± 30.4	0.08
CRP (mg/dl)	0.065 ± 0.083	0.045 ± 0.031	0.129 ± 0.156	0.04*
Uric Acid (mg/dl)	5.77 ± 1.03	6.28 ± 0.96	6.61 ± 1.17	0.12
Free T4 (ng/dl)	1.31 ± 0.15	1.34 ± 0.11	1.18 ± 0.17	0.01*
Free T3 (pg/dl)	3.09 ± 0.32	3.21 ± 0.28	3.05 ± 0.25	0.21
TSH (uIU/ml)	1.59 ± 0.53	1.38 ± 0.7	1.94 ± 1.18	0.15
TBR _{max}	16.2 ± 1.6	18.6 ± 1.8	20.9 ± 3.1	<0.001*
TBR _{mean}	11.5 ± 1.6	13.5 ± 1.3	15.1 ± 2.3	<0.001*
Library size mean	22,331 ± 12,250	23,923 ± 13,767	30,636 ± 25,333	0.29

Data are mean ± standard deviation

BMI body mass index, HDL high-density lipoprotein, LDL low-density lipoprotein, CRP C-reactive protein, TSH thyroid-stimulating hormone

**p* < 0.05

by accounting for evenness or homogeneity using Shannon and InvSimpson. We compared the indices between group 1 vs. 2, group 1 vs. 3, group 2 vs. 3, group 1 vs. 2 and 3, and groups 1 and 2 vs. 3. There was no significant difference in ¹⁸F-FDG uptake in all indices of alpha diversity (Additional file 1: Figure S1 and Table S1) between groups.

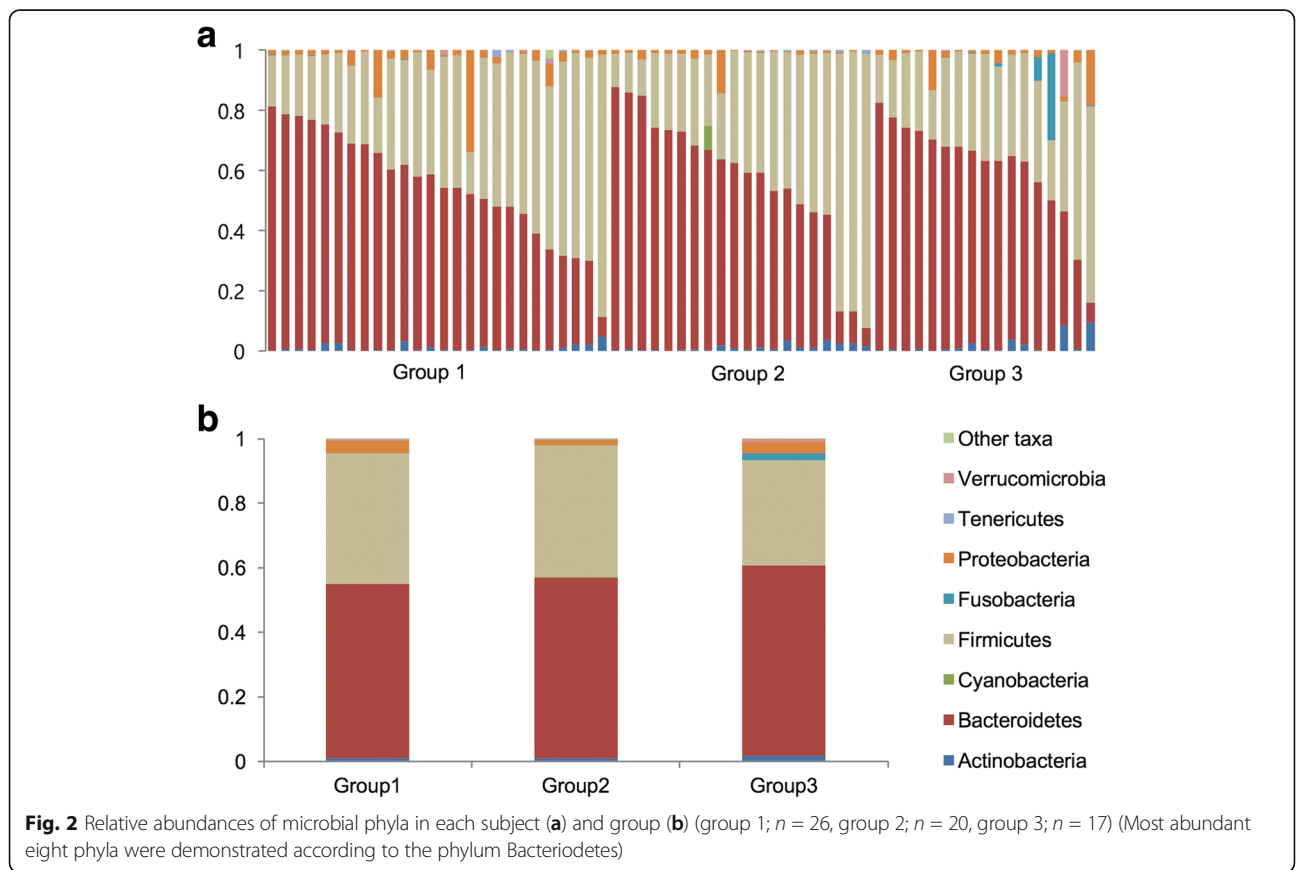
The PERMANOVA analysis showed a significant ($p = 0.047$, pseudo- $F = 1.57$) difference in Bray-Curtis distances between groups 1 and 2, although the comparison of the bacterial communities by principal coordinate analysis (PCoA) plot with the Bray-Curtis distance could not easily distinguish between the two groups (Additional file 1: Figure S2).

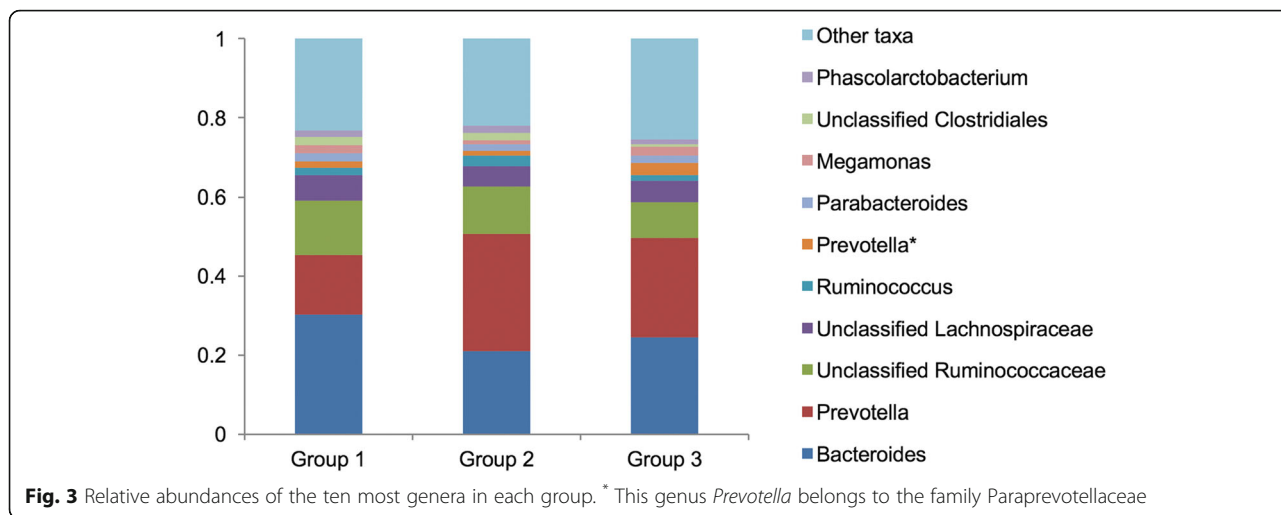
Association of intestinal ¹⁸F-FDG uptake with gut microbiota

We next examined whether differences in the abundances of specific bacterial taxa were associated with intestinal ¹⁸F-FDG uptake. For detailed taxonomic analyses, individual sequences were classified and assigned to 11 known phyla. Firmicutes and Bacteroidetes were the two most dominant phyla and they comprised an average of 93.04% of total classifiable sequences in all groups (group 1: 92.77%, group 2: 93.95%, and group 3: 92.37%) (Fig. 2), as previously reported in many studies [18]. Comparison of the mean abundances between

groups by the Student's t test showed that the phylum Fusobacteria was more abundant in group 3 than in group 1 ($F = 14.44$, $p < 0.0001$). Since the abundance data were not normally distributed and contained a large fraction of zero values, we employed a negative binomial GLM using DESeq, which was used as the main statistical test for comparison throughout this study. The tests showed that Fusobacteria were significantly associated with differences between groups 1 and 3 [\log_2 fold change (\log_2FC) = 4.50, $q = 9.32 \times 10^{-3}$] (Additional file 1: Table S2-2).

At the genus level, among 88 genera identified, *Bacteroides spp.*, *Prevotella spp.*, unclassified Ruminococcaceae, unclassified Lachnospiraceae, and *Ruminococcaceae spp.* were the top five most abundant genera identified (Fig. 3). The five genera comprised 56.52, 57.37, and 54.42% of groups 1, 2, and 3, respectively. The unclassified Leuconostocaceae and *Mitsuokella spp.* were significantly more abundant in group 2 than in group 1 after controlling for age and BMI ($\log_2FC = 5.29$, 4.46; $q = 4.02 \times 10^{-7}$, 2.85×10^{-3} , respectively) (Table 2 and Fig. 4a). In contrast, the abundance of *Klebsiella spp.* was lower in group 2 than in group 1 ($\log_2FC = -3.00$, $q = 1.81 \times 10^{-2}$) (Fig. 4b). *Mitsuokella spp.* were also more abundant in group 3 than in group 1 ($\log_2FC = 4.84$, $q = 3.85 \times 10^{-2}$). We found that group





3 had more abundant *Fusobacterium spp.* than group 1 ($\log_2FC = 5.74, q = 3.85 \times 10^{-2}$), as well as the phylum Fusobacteria (Additional file 1: Table S2-2). However, we could not find the significant differences of taxa between group 2 and group 3 in the phylum and genus level (Additional file 1: Table S2-3 and Table S3). Moreover, there was no statistically significant difference in the unclassified Leuconostocaceae and *Fusobacterium* between group 2 and group 3 although there seemed to be differences in the Fig. 4.

To compare subjects showing diffuse FDG activity and relatively intense FDG activity in the intestine, we combined groups 1 and 2 and compared them with group 3. To compare subjects with lower FDG activity and higher activity than the liver, we combined groups 2 and 3 and compared them with group 1. The unclassified Clostridiales were more abundant in the group 1 + 2 than group 3 ($\log_2FC = -1.11, q = 1.26 \times 10^{-2}$) (Fig. 4c). The

abundance of unclassified Clostridiales was shown the negative trend by groups in Fig. 4c and the taxon was also more abundant in group 2 than group 3 although it was not statistical significant ($p = 0.003, q = 0.18$) in (Additional file 1: Table S3). Comparison between groups 1 and 2 + 3 yielded results similar to those obtained from the comparison of groups 1 and 2.

Quantitative analysis of intestinal ¹⁸F-FDG uptake

We also tested whether TBR_{max} and TBR_{mean} were associated with changes in gut microbiota. The TBR_{max} and TBR_{mean} showed similar results (Table 3). At the phylum level, there was no significant association between TBR and the abundance of individual phyla. At the genus level, abundance of the unclassified Enterobacteriaceae was negatively associated with TBR_{max} and TBR_{mean} ($\log_2FC = -0.35, -0.47; q = 3.56 \times 10^{-3}, 4.38 \times 10^{-3}$, respectively) (Fig. 5).

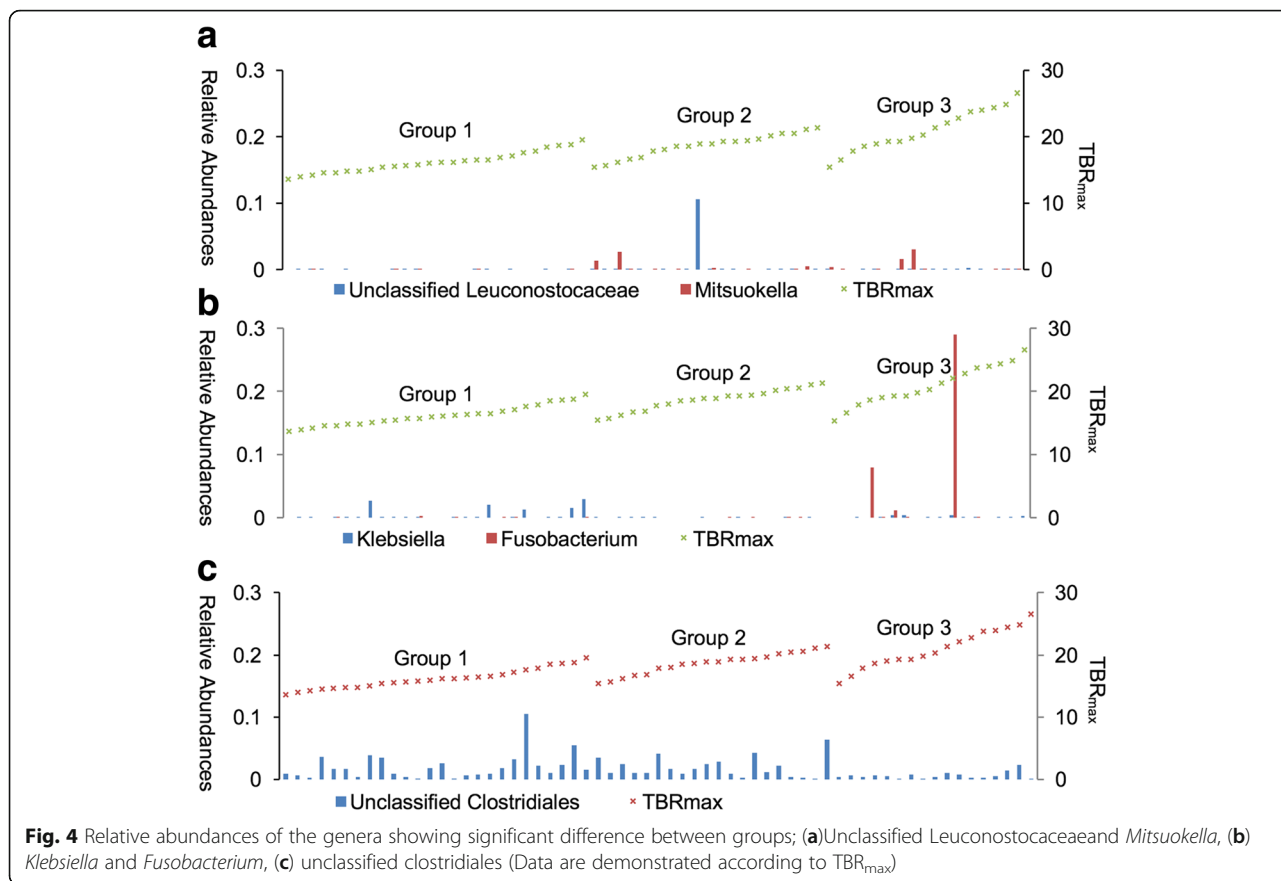
Table 2 Differing abundance of specific populations of gut microbiota among groups for intestinal ¹⁸F-FDG uptake at the level of genus

Group	Genus	Relative Abundance (%) ^a	Log2FoldChange (SE)	p value	q value ^b
1 vs. 2	Unclassified Leuconostocaceae	0.14	5.29 (0.91)	6.27×10^{-9}	4.02×10^{-7}
	<i>Mitsuokella</i>	0.24	4.46 (1.14)	8.91×10^{-5}	2.85×10^{-3}
	<i>Klebsiella</i>	0.36	-3.00 (0.90)	8.49×10^{-4}	1.81×10^{-2}
1 vs. 3	<i>Mitsuokella</i>	0.24	4.84 (1.26)	1.24×10^{-4}	3.85×10^{-2}
	<i>Fusobacterium</i>	0.20	5.74 (1.49)	1.19×10^{-4}	3.85×10^{-2}
1 vs. 2 + 3	Unclassified Leuconostocaceae	0.14	4.73 (0.81)	4.39×10^{-9}	2.85×10^{-7}
	<i>Mitsuokella</i>	0.24	4.35 (1.01)	1.73×10^{-5}	5.62×10^{-4}
	<i>Klebsiella</i>	0.36	-2.41 (0.76)	1.57×10^{-3}	3.40×10^{-2}
1 + 2 vs. 3	<i>Fusobacterium</i>	0.20	4.68 (1.07)	1.25×10^{-5}	8.10×10^{-4}
	Unclassified Clostridiales	4.10	-1.11 (0.31)	3.88×10^{-4}	1.26×10^{-2}
	Unclassified Leuconostocaceae	0.14	-2.83 (0.87)	1.17×10^{-3}	2.53×10^{-2}

The results of between group 2 and group 3 were not shown because there is no taxon with significant difference (q value <0.05)

^aRelative abundance in total 63 samples

^b q value <0.05, the q values were calculated using Benjamini-Hochberg correction (FDR)



Discussion

In this study, unclassified Clostridiales were consistently lower in group 3 than in the other groups. It was previously reported that unclassified Clostridiales were decreased in rats fed a high-fat diet (HFD) or the FODMAP (fermentable oligo-, di- and mono-saccharides and polyols) diet (S. Zhou, unpublished data, 2013). These diets caused dysbiosis in the gut accompanied by mucosal inflammation and impaired permeability. Another study reported that unclassified Clostridiales were inversely correlated with fat mass in rats fed a HFD and high protein diet (J. Jacobs, unpublished data, 2016). In a human study, Verdam et al. observed that obese subjects had lower uncultured Clostridiales than non-obese subjects [19].

The relationship between diet and bowel FDG uptake is still unclear; however, we can cautiously speculate regarding the associations between these factors. A previous study demonstrated that the SUV of background intestinal FDG uptake was positively correlated with BMI and lipid profile in female Korean patients with breast cancer [5]. However, we did not observe a significant difference in BMI and lipid profiles based on bowel FDG activity. Our study population contained only a small number of men with a young and narrow age distribution who were healthier than the population of

the aforementioned study. Due to these dissimilarities, the difference in BMI and lipid profile among groups may not be noticeable.

HFD leads to intestinal inflammation, metabolic endotoxemia, increased intestinal permeability, and obesity [20, 21]. If physiologic bowel FDG uptake is associated with intestinal permeability, many factors are likely to affect bowel FDG activity, including the HFD. Obesity [22], stress [23], irritable bowel syndrome [24], and a variety of autoimmune diseases [25], all of which are known to increase intestinal permeability, may be associated with physiologic bowel FDG uptake.

A previously mentioned study [4] demonstrated suppressed bowel FDG uptake by Rifaximin and showed that bacteria are responsible for the retention of FDG. Accordingly, FDG activity is predicted to be determined by the number of bacteria. In our study, the *Fusobacterium* was more abundant in group 3 than in the other groups. However, 11 out of 17 subjects in group 3 were found not to have *Fusobacterium* and only three patients showed prominent abundance. These findings suggested that they might be incidental and not actually related to bowel FDG uptake.

In a study by Xu et al., water-avoidance stress in rats induced intestinal inflammation and increased intestinal

Table 3 Association gut microbiota and TBR_{max} and TBR_{mean} at the level of genus

	Genus	Relative abundance (%) ^a	Log2 foldchange (SE)	p value	q value ^b
TBR _{mean}	Unclassified Enterobacteriaceae	1.26	-0.47 (0.12)	6.75 × 10 ⁻⁵	4.38 × 10 ⁻³
	Unclassified Enterobacteriaceae	0.33	-0.47 (0.13)	2.60 × 10 ⁻⁴	8.44 × 10 ⁻³
TBR _{max}	Unclassified Enterobacteriaceae	1.26	-0.35 (0.09)	5.48 × 10 ⁻⁵	3.56 × 10 ⁻³
	Unclassified Enterobacteriaceae	0.33	-0.34 (0.09)	3.45 × 10 ⁻⁴	1.12 × 10 ⁻²

^aRelative abundance in total 63 samples

^bq value <0.05, q-values were calculated using Benjamini-Hochberg correction (FDR)

permeability. They also improved intestinal permeability through chronic treatment with Rifaximin [26]. Rifaximin was reported to prevent stress-induced mucosal inflammation, intestinal barrier impairment, and visceral hyperalgesia, which was linked to enhanced gut permeability. It is possible that contrary to previous suggestions [4], suppressed intestinal FDG activity by rifaximin might be due to improved intestinal permeability rather than a bactericidal effect.

Group 1 had increased *Klebsiella* compared to group 2. The *Klebsiella* was also more abundant in group 1 than group 3 although it was not statistical significant ($p = 0.06, q = 0.36$). And the unclassified Enterobacteriaceae were negatively correlated with the TBR value in this study. We observed a prominent abundance of these genera in only a few subjects, so the possibility of incidental findings needs to be considered. These genera belong to the family *Enterobacteriaceae*. Their metabolic outcomes include enhancement of intestinal barrier integrity and reduction in the permeability of bacterial components [27]. Therefore, when physiologic bowel activity is scant, the intestinal barrier can be maintained by these bacteria.

It is unclear whether FDG translocates from the blood to the intestinal lumen through a transcellular pathway or paracellular pathway. If bowel FDG activity is related to intestinal permeability, FDG is likely to migrate through a paracellular pathway because intestinal permeability is regulated by paracellular tight junction [25]. Levine et al. showed a good correlation between intestinal glucose secretion and blood glucose concentration in rats [28]. They suggested that glucose moves bidirectionally across the intestine, and that its secretion is a

passive process. Recently, Bardhan et al. postulated a paracellular route of FDG and refuted the hypothesis of transcellular transport of FDG [29]. Moreover, they refuted the transcellular hypothesis of FDG via the GLUT transporter suggested by Wang et al. [30]. The GLUT transporters located on the basolateral surface of the mucosal cells are known to export glucose from mucosal cells to the blood in the small intestine. Bardhan et al. suggested that it is doubtful that GLUT transporters also exist in the large bowel and speculated as to whether they can also transport in the opposite direction.

In our study, the relative abundance of the *Fusobacterium* was 0.2% and it is not an abundant taxon. The prominent abundance of *Fusobacterium* was observed in group 3, but not in the other groups. It might be possible that unusual bacteria proliferate in the intestinal lumen due to intestinal barrier dysfunction or a change in the microbial population. The potential of *Fusobacterium* seems to be worth describing although we could not exclude the possibility of an incidental association due to small sample size.

Fusobacterium was reported to be increased in obese people compared to lean people in a Japanese study population [31]. A majority of studies reported that the *Fusobacterium* was enriched in intestinal inflammation, colorectal adenoma, and cancer [32, 33]. Recently, a Korean study reported that the prevalence of colorectal adenoma was increased according to physiologic bowel FDG activity [34]. The authors assumed that the contribution of gut flora may explain the significant association between background intestinal ¹⁸F-FDG uptake and the prevalence of colorectal adenoma. *Fusobacterium* might explain these associations, but further investigation

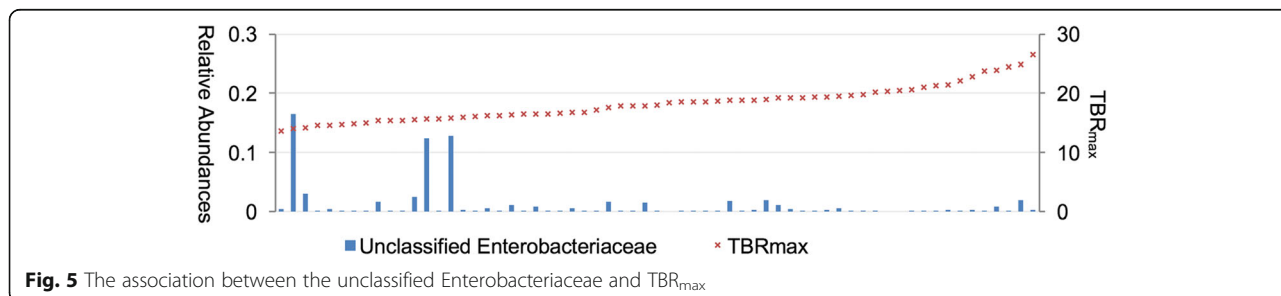


Fig. 5 The association between the unclassified Enterobacteriaceae and TBR_{max}

is needed to ascertain the link between the *Fusobacterium* and physiologic FDG uptake.

The associations between *Fusobacterium* and obesity and between obesity and physiologic bowel FDG uptake have not yet been revealed in the western population. It is well known that certain dietary habits influence the composition of gut microbiota. The aforementioned associations may have appeared prominently in Korean and Japanese subjects, which have relatively similar food cultures compared with western countries. Although multiculturalism has reduced lifestyle differences between Asian and Western populations, significant distinctions persist, including patterns of food consumption, multiple products of gut microbial and host co-metabolism, and gut microbiota compositions [35].

In this study, unclassified Leuconostocaceae was increased in group 2, but only one subject showed a prominent abundance. This finding is likely to be incidental and not related to FDG uptake.

This study has several limitations. First, there were a small number of subjects, and a larger cohort study is needed to ascertain whether an association truly exists or not. Second, we grouped subjects by visual analysis in the assessment of bowel FDG uptake. Visual analysis is subjective and observer-dependent. Quantitative analysis was added to compensate for these shortcomings. Third, a PET/CT image was taken by two different scanners, so that SUV_{max} and SUV_{mean} of the intestine were normalized with SUV_{mean} of the liver.

Conclusions

To the best of our knowledge, this is the first report of the association between gut microbiota and physiologic bowel FDG activity. Our data demonstrated that the group with focal or intense FDG uptake in the intestine was associated with low abundance of unclassified Clostridiales. The group with intestinal FDG uptake lower than the liver was associated with high abundance of *Klebsiella*. We cautiously speculated that increased FDG activity might be caused by an increase in intestinal permeability and reflects impaired intestinal barrier function. Further studies with a larger sample is needed to confirm our speculation. If our hypothesis is true, it will help to determine the etiology of physiologic bowel FDG activity. Moreover, to replace a relatively invasive measurement, ^{18}F -FDG PET/CT can provide a non-invasive method and contribute to widen the research field of intestinal permeability in the clinical or preclinical setting.

Additional file

Additional file 1: Figure S1. Comparisons of community alpha diversities among groups for the intestinal ^{18}F -FDG. **Table S1.** Association between alpha diversity and intestinal ^{18}F -FDG uptake. **Figure S2.** Principal coordinate

analysis (PCoA) plot with Bray-Curtis distance. **Table S2-1.** Associations of intestinal ^{18}F -FDG uptake with gut microbiota at the phylum level: Group 1 vs. 2. **Table S2-2.** Associations of intestinal ^{18}F -FDG uptake with gut microbiota at the phylum level: Group 1 vs. 3. **Table S2-3.** Associations of intestinal ^{18}F -FDG uptake with gut microbiota at the phylum level: Group 2 vs. 3. **Table S2-4.** Associations of intestinal ^{18}F -FDG uptake with gut microbiota at the phylum level: Group 1 vs. 2 + 3. **Table S2-5.** Associations of intestinal ^{18}F -FDG uptake with gut microbiota at the phylum level: Group 1 + 2 vs. 3. **Table S3.** Differing abundance of specific populations of gut microbiota between group 2 and group 3 for intestinal ^{18}F -FDG uptake at the genus level. (PDF 1250 kb)

Abbreviations

^{18}F -FDG: Fluorine-18 fluorodeoxyglucose; BMI: Body mass index; CT: Computed tomography; FDR: False discovery rate; FODMAP: Fermentable oligo-, di- and mono-saccharides and polyols; GLM: Generalized linear model; GLUT: Glucose transporter; HbA1c: Hemoglobin A1c; HFD: High fat diet; log2FC: Log₂ fold change; OTU: Operational taxonomic unit; PCoA: Principal coordinate analysis; PERMANOVA: Permutational multivariate analysis of variance; PET: Positron emission tomography; rRNA: Ribosomal Ribonucleic acid; SUV_{max} : Maximum standardized uptake value; SUV_{mean} : Mean standardized uptake value; TBR_{max} : Uptake ratio of SUV_{max} of total bowel to SUV_{mean} of the liver; TBR_{mean} : Uptake ratio of SUV_{mean} of total bowel to SUV_{mean} of the liver; VOI: Volume of interest

Acknowledgements

This study was supported with the computing resources by Global Science experimental Data hub Center (GSDC) Project and Korea Research Environment Open Network (KREONET) in Korea Institute of Science and Technology Information (KISTI).

Funding

This research was supported by the National Research Foundation of Korea (NRF), funded by the Ministry of Education (NRF-2017R1D1A1B03035501 and NRF-2016R1A6A3A11932719). It was also funding by the Korea Health Industry Development Institute (KHIDI) funded by the Ministry of Health and Welfare (HI14C0072).

Authors' contributions

JYK and HNK is the guarantor of integrity of the entire study, is responsible for the data analysis, statistical analysis, and manuscript writing. HS and HLK contributed to the study design, and manuscript editing and review. YY helped in the data analysis. YC and SR helped in the data collection and data analysis. All authors read and approved the final manuscript.

Ethics approval and consent to participate

This study protocol was approved by the Institutional Review Board of Kangbuk Samsung Hospital. All procedures performed in this study were in accordance with the ethical standards of the institutional research committee and with the 1964 Helsinki Declaration and its later amendments. Written informed consent was obtained from all participants after the nature and possible consequences of the studies were explained.

Consent for publication

All subjects agreed to participate in this study, and provided written informed consent.

Competing interests

The authors declare that they have no competing interests.

Publisher's Note

Springer Nature remains neutral with regard to jurisdictional claims in published maps and institutional affiliations.

Author details

- ¹Department of Nuclear Medicine, Kangbuk Samsung Hospital, Sungkyunkwan University School of Medicine, Seoul, South Korea.
- ²Department of Biochemistry, Ewha Womans University, School of Medicine, 1071, Anyangcheon-ro, Yangcheon-gu, Seoul 07985, South Korea.
- ³Department of Occupational and Environmental Medicine, Kangbuk Samsung Hospital, Sungkyunkwan University School of Medicine, Seoul,

South Korea. ⁴Department of Family Medicine, Kangbuk Samsung Hospital, Sungkyunkwan University School of Medicine, 29, Saemunan-ro, Jongno-gu, Seoul 03181, South Korea.

Received: 5 July 2017 Accepted: 16 August 2017

Published online: 31 August 2017

References

- Kim S, Chung JK, Kim BT, Kim SJ, Jeong JM, Lee DS, et al. Relationship between gastrointestinal F-18-fluorodeoxyglucose accumulation and gastrointestinal symptoms in whole-body PET. *Clin Positron Imaging*. 1999;2:273–9.
- Soyka JD, Strobel K, Veit-Haibach P, Schaefer NG, Schmid DT, Tschopp A, et al. Influence of bowel preparation before 18F-FDG PET/CT on physiologic 18F-FDG activity in the intestine. *J Nucl Med*. 2010;51:507–10.
- Toriihara A, Yoshida K, Umehara I, Shibuya H. Normal variants of bowel FDG uptake in dual-time-point PET/CT imaging. *Ann Nucl Med*. 2011;25:173–8.
- Franquet E, Palmer MR, Gifford AE, Selen DJ, Chen YC, Sedora-Roman N, et al. Rifaximin suppresses background intestinal 18F-FDG uptake on PET/CT scans. *Nucl Med Commun*. 2014;35:1026–31.
- Yoon HJ, Kim HN, Yun Y, Kim Y, Ha AN, Kim HL, et al. Background intestinal 18F-FDG uptake is related to serum lipid profile and obesity in breast cancer patients. *PLoS One*. 2015;10:e0141473.
- Lee JW, Oh JK, Chung YA, Na SJ, Hyun SH, Hong IK, et al. Prognostic significance of 18F-FDG uptake in Hepatocellular carcinoma treated with Transarterial Chemoembolization or concurrent Chemoradiotherapy: a multicenter retrospective cohort study. *J Nucl Med*. 2016;57:509–16.
- Caporaso JG, Lauber CL, Walters WA, Berg-Lyons D, Lozupone CA, Turnbaugh PJ, et al. Global patterns of 16S rRNA diversity at a depth of millions of sequences per sample. *Proc Natl Acad Sci U S A*. 2011;108(Suppl 1):4516–22.
- Kozich JJ, Westcott SL, Baxter NT, Highlander SK, Schloss PD. Development of a dual-index sequencing strategy and curation pipeline for analyzing amplicon sequence data on the MiSeq Illumina sequencing platform. *Appl Environ Microbiol*. 2013;79:5112–20.
- Fadrosh DW, Ma B, Gajer P, Sengamaly N, Ott S, Brotman RM, et al. An improved dual-indexing approach for multiplexed 16S rRNA gene sequencing on the Illumina MiSeq platform. *Microbiome*. 2014;2:6.
- Caporaso JG, Kuczynski J, Stombaugh J, Bittinger J, Bushman FD, Costello EK, et al. QIIME allows analysis of high-throughput community sequencing data. *Nat Methods*. 2010;7:335–6.
- DeSantis TZ, Hugenholtz P, Larsen N, Rojas M, Brodie EL, Keller K, et al. Greengenes, a chimera-checked 16S rRNA gene database and workbench compatible with ARB. *Appl Environ Microbiol*. 2006;72:5069–72.
- Navas-Molina JA, Peralta-Sanchez JM, Gonzalez A, McMurdie PJ, Vazquez-Baeza Y, Xu Z, et al. Advancing our understanding of the human microbiome using QIIME. *Methods Enzymol*. 2013;531:371–444.
- McMurdie PJ, Holmes S. Phyloseq: an R package for reproducible interactive analysis and graphics of microbiome census data. *PLoS One*. 2013;8:e61217.
- Love MI, Huber W, Anders S. Moderated estimation of fold change and dispersion for RNA-seq data with DESeq2. *Genome Biol*. 2014;15:550.
- Wickham H. ggplot2: Elegant Graphics for Data Analysis. Springer-Verlag New York; 2009.
- Paulson JN, Stine OC, Bravo HC, Pop M. Differential abundance analysis for microbial marker-gene surveys. *Nat Methods*. 2013;10:1200–2.
- Gill SR, Pop M, Deboy RT, Eckburg PB, Turnbaugh PJ, Samuel BS, et al. Metagenomic analysis of the human distal gut microbiome. *Science*. 2006;312:1355–9.
- Eckburg PB, Bik EM, Bernstein CN, Purdom E, Dethlefsen L, Sargent M, et al. Diversity of the human intestinal microbial flora. *Science*. 2005;308:1635–8.
- Verdam FJ, Fuentes S, de Jonge C, Zoetendal EG, Erbil R, Greve JW, et al. Human intestinal microbiota composition is associated with local and systemic inflammation in obesity. *Obesity (Silver Spring)*. 2013;21:E607–15.
- Cani PD, Bibiloni R, Knauf C, Waget A, Neyrinck AM, Delzenne NM, et al. Changes in gut microbiota control metabolic endotoxemia-induced inflammation in high-fat diet-induced obesity and diabetes in mice. *Diabetes*. 2008;57:1470–81.
- Moreira AP, Teixeira TF, Ferreira AB, Peluzio Mdo C, Alfenas RC. Influence of a high-fat diet on gut microbiota, intestinal permeability and metabolic endotoxaemia. *Br J Nutr*. 2012;108:801–9.
- Teixeira TF, Collado MC, Ferreira CL, Bressan J, Peluzio MC. Potential mechanisms for the emerging link between obesity and increased intestinal permeability. *Nutr Res*. 2012;32:637–47.
- de Punder K, Pruimboom L. Stress induces endotoxemia and low-grade inflammation by increasing barrier permeability. *Front Immunol*. 2015;6:223.
- Simrén M, Barbara G, Flint HJ, Spiegel BMR, Spiller RC, Vanner S, et al. Intestinal microbiota in functional bowel disorders: a Rome foundation report. *Gut*. 2012;62:159–76.
- Arrieta MC, Bistriz L, Meddings JB. Alterations in intestinal permeability. *Gut*. 2006;55:1512–20.
- Xu D, Gao J, Gilliland M 3rd, Wu X, Song I, Kao JY, et al. Rifaximin alters intestinal bacteria and prevents stress-induced gut inflammation and visceral hyperalgesia in rats. *Gastroenterology*. 2014;146:484–96. e4
- Hussey S, Bergman M. The Gut Microbiota and Effects on Metabolism. Reference Module in Biomedical Sciences, from Pathobiology of Human Disease. 2014; doi: 10.1016/B978-0-12-386456-7.02009-8.
- Levine GM, Shiau YF, Deren JA. Characteristics of intestinal glucose secretion in normal and diabetic rats. *Am J Phys*. 1982;242:G455–9.
- Bardhan KD, Cullis J, Williams NR, Arasaradnam RP, Wilson AJ. Quantification of 18FDG in the normal Colon—a first step in investigating whether its presence is a marker of a physiological process. *PLoS One*. 2016;11:e0147838.
- Wang K, Chen YC, Palmer MR, Tal I, Ahmed A, Moss AC, et al. Focal physiologic fluorodeoxyglucose activity in the gastrointestinal tract is located within the colonic lumen. *Nucl Med Commun*. 2012;33:641–7.
- Andoh A, Nishida A, Takahashi K, Inatomi O, Imaeda H, Bamba S, et al. Comparison of the gut microbial community between obese and lean peoples using 16S gene sequencing in a Japanese population. *J Clin Biochem Nutr*. 2016;59:65–70.
- McCoy AN, Araujo-Perez F, Azcarate-Peril A, Yeh JJ, Sandler RS, Keku TO. Fusobacterium is associated with colorectal adenomas. *PLoS One*. 2013;8:e53653.
- Bashir A, Miskeen AY, Hazari YM, Asrafuzzaman S, Fazili KM. Fusobacterium nucleatum, inflammation, and immunity: the fire within human gut. *Tumour Biol*. 2016;37:2805–10.
- Lee KE, Moon CM, Yoon HJ, Kim BS, Chang JY, Son HM, et al. Background colonic 18F-Fluoro-2-Deoxy-D-glucose uptake on positron emission tomography is associated with the presence of colorectal adenoma. *PLoS One*. 2016;11:e0160886.
- Lee S, Sung J, Lee J, Ko G. Comparison of the gut microbiotas of healthy adult twins living in South Korea and the United States. *Appl Environ Microbiol*. 2011;77:7433–7.

Submit your manuscript to a SpringerOpen® journal and benefit from:

- Convenient online submission
- Rigorous peer review
- Open access: articles freely available online
- High visibility within the field
- Retaining the copyright to your article

Submit your next manuscript at ► springeropen.com