

# Diagnostic Performance of Serum Human Epididymis Protein 4 in Endometrial Carcinoma: A Pilot Study

RUPALI DEWAN<sup>1</sup>, ABHINAV DEWAN<sup>2</sup>, SWATI HARE<sup>3</sup>, MAUSUMI BHARDWAJ<sup>4</sup>, KRATI MEHROTRA<sup>5</sup>

## ABSTRACT

**Introduction:** Endometrial Cancer (EC) is a common female malignant disorder. To date, there are no specific tumour markers for EC that may be routinely used in clinical practice for diagnosis.

**Aim:** To evaluate the diagnostic performance of the serum Human Epididymis protein 4 (HE4) as biomarker for EC and to determine its association with clinicopathological variables.

**Materials and Methods:** The study population included 60 postmenopausal women with a diagnosis of EC and 60 healthy postmenopausal female subjects (control group). Concentrations of serum HE4 and CA-125 in EC patients and control group were determined using Enzyme-Linked Immunosorbent Assays (ELISA). The value of serum HE4 and CA-125 for the diagnosis and prediction of stage, histology, myometrial invasion and lymph nodal metastasis was analysed.

**Results:** The mean serum HE4 and CA-125 levels were significantly higher in patients with EC than those with control group ( $p < 0.05$ ). Comparison for HE4 and CA-125 between different stages showed a statistically significant difference. Stage I EC patients with  $< 50\%$  myometrial invasion had a

significantly lower mean serum HE4 value than patients with  $> 50\%$  myometrial invasion ( $p = 0.007$ ). Corresponding values of CA-125 showed a similar trend ( $p = 0.023$ ). There were significantly higher levels of HE4 and CA-125 in cases with lymph node involvement. The levels of serum HE4 and CA-125 were higher in the non-endometrioid histology, but the difference was not statistically significant.

The Receiver Operating Characteristics (ROC) curve analysis for EC and control group showed that HE4 had greater Area Under Curve (AUC) when compared with CA-125. Using ROC curve, a serum HE4 concentration of 69.8 pmol/l (AUC 0.974) and/or serum CA-125 level of 34.50 U/mL (AUC 0.714) was used to predict malignancy. Sensitivity of combined biomarkers showed no additional improvement in comparison to HE4 or CA-125 alone.

**Conclusion:** Our results show that HE4 is a sensitive diagnostic serum marker for detection of EC patients, exhibiting a better diagnostic performance compared to CA-125. Good performance of HE4 in diagnosis of early stages EC indicates its usefulness as a prognostic marker and also to monitor therapy and detect early recurrence.

**Keywords:** Biomarker, Metastasis, Myometrial invasion

## INTRODUCTION

EC is one of the commonest gynaecological malignancy worldwide. The incidence is expected to rise due to a global increase in the prevalence of risk factors for EC i.e. obesity and diabetes [1-2].

Most cases of EC are diagnosed at an early stage with good prognosis. Fortunately, 70% of EC are diagnosed in initial stages due to early presentation of symptoms, the most frequent of which is abnormal vaginal bleeding from the uterus [3]. However, about 30% of ECs occur in asymptomatic women or are diagnosed at an advanced stage [4]. Presentation may be unusual at times. This particular subgroup of patients would certainly benefit from the advent of a reliable serum marker panel to aid early diagnosis.

EC patients with low-grade tumours, endometrioid histology and no/only inner-half Myometrial Invasion (MI) are at negligible risk of Lymph Node Metastases (LNM) and may be spared from the morbidity of lymphadenectomy [4]. However, identification of these patients before surgery remains challenging. A prognostic marker that may preoperatively predict the stage of disease, lymph nodal or myometrial involvement would help to plan treatment in a more individualized fashion.

The role of tumour markers in EC is still debatable. Although, Carcinoma Antigen-125 (CA-125) is commonly used biomarker, it has poor sensitivity and specificity [5]. Only 10% to 20% of patients with early stage EC and approximately 25% of patients with asymptomatic recurrent disease have an elevated CA-125 level

[6-7]. Elevated CA-125 levels have been demonstrated to correlate with advanced disease [8].

HE4 is a novel tumour marker. Preliminary data has demonstrated overexpression of HE4, also known as WFDC2 in EC. Several studies have been published in recent years about use of serum HE4 as diagnostic and prognostic EC biomarker [9-11].

Unfortunately, to date, no good marker for EC is available that may be routinely used in clinical practice for detection, prognosis and monitoring of EC. Thus, the challenge to find a preoperative tool for EC diagnosis and staging is still open. The present study was planned to assess the utility of serum HE4 as a biomarker for diagnosis of EC and to investigate its association with clinicopathological variables.

## MATERIALS AND METHODS

We conducted a pilot study of 60 patients treated surgically for primary EC between October 15, 2014 and January 15, 2016 at Department of Obstetrics and Gynaecology, Vardhman Mahavir Medical College and Safdarjung Hospital, New Delhi, India, in collaboration with Institute of Cytology and Preventive Oncology, Noida, Uttar Pradesh, India. Women aged 50-79 years, diagnosed with EC during this period and scheduled for surgical staging were prospectively recruited after obtaining informed consent. The exclusion criteria included: (1) patients unfit for surgery, (2) presence of a secondary malignancy, (3) Concomitant benign and/or malignant adnexal pathologies, (4) history of abdominal Koch's,

(5) women who have received treatment for malignancy earlier. The Institutional Review Board approved the study. Sixty age matched healthy postmenopausal women were included in the study as control in which serum level of tumour markers was measured.

About 10 ml of peripheral blood venous sample was obtained preoperatively from each patient and control subjects and examined for CA-125 and HE4. All sera were acquired following a standard collection protocol. Samples were collected in a vacutainer, clotted 60–90 minutes and centrifuged for 10 minutes at 1,300×g. Serum fractions were aliquoted and stored at –80 °C until analysis. Specimens were analyzed at Institute of Cytology and Preventive oncology, Noida by means of chemiluminescent micro particle immunoassays specific for HE4 (ARCHITECT HE4 assay; Abbott Diagnostics, Lane Cove, NSW, Australia) or CA-125 (ARCHITECT CA-125II assay; Abbott Diagnostics, Lane Cove, NSW, Australia). The interassay imprecision values for CA-125 were 2.69% (37.9 kU/L), 2.6% (292.9 kU/L), and 1.26% (612 kU/L). Interassay precision values for HE4 were 3.6% (49.3 pmol/L), 4.6% (171.8 pmol/L), and 4.5% (662.8 pmol/L).

For this study, we considered a standard HE4 cutoff value of 70 pmol/L and CA-125 cutoff of 35U/ml, according to the manufacturer's indications, and also as suggested by Moore RG et al., [7]. The area under the ROC curve (AUC) was calculated to determine our own cut off values which incidentally were close to the standard values.

Patients were staged according to International Federation of Gynaecology and Obstetrics (FIGO) and Gynaecologic Oncology Group staging procedure surgical staging system. Postoperatively, the histopathological examination was performed and reported according to WHO histopathological classification for EC [12].

Mean value of tumour markers were calculated in EC cases and control group. Data was further analyzed according to stage, histopathology, MI and lymph node involvement. The ability of the diagnostic models to detect malignancy was tested prospectively and compared with the final histopathological diagnosis.

## STATISTICAL ANALYSIS

Statistical analysis was performed by the SPSS program for Windows, version 20.0. Continuous variables were presented as mean ± SD, and categorical variables were presented as absolute numbers and percentage. Data were checked for normality before statistical analysis. Normally distributed continuous variables were compared using the unpaired t-test, whereas Mann-Whitney U test was used for those variables that were not normally distributed. Categorical variables were analyzed using either the Chi-square test or Fisher's exact test. The AUC with 95% confidence interval, sensitivity, and specificity were calculated to analyze the diagnostic accuracy of CA-125 and HE4. For all statistical tests, a p-value of less than 0.05 was considered significant.

## RESULTS

Clinical and pathological characteristics of patient cohort have been presented in [Table/Fig-1]. Mean parity in the patients with EC was significantly lower than healthy controls ( $-2.26 \pm 0.99$  vs.  $3.53 \pm 1.10$ ,  $p$ -value $<0.001$ ); whereas mean BMI in EC cases was significantly higher than the control group ( $27.4 \pm 3.11 \text{ kg/m}^2$  vs.  $22.3 \pm 2.71 \text{ kg/m}^2$ ,  $p$ -value $<0.05$ ). Out of the total 60 patients with EC, 20 (33%) were associated with diabetes mellitus, 12 (20%) with hypertension and 20 (33%) with obesity in comparison to controls in which 6 (10%), 8 (13%), 10 (17%) were associated with diabetes mellitus, hypertension and obesity respectively. This difference was statistically significant for diabetes mellitus with a  $p$ -value of 0.05. Comparative analysis of the serum HE4 levels and CA-125 for each group is given in [Table/Fig-2].

The mean serum HE4 (EC  $127.07 \pm 61.36$  pmol/L vs.  $38.71 \pm 9.05$  pmol/L in healthy controls,  $p=0.001$ ) and CA-125 levels (EC  $59.6 \pm 77.5$  U/ml vs.  $18.6 \pm 7.63$  U/ml in healthy control,  $p=0.005$ ) of EC patients were significantly higher when compared with healthy controls.

**Diagnostic value of serum HE4 and CA-125 for endometrial cancer:** ROC curve for HE4 and CA-125 was generated to predict endometrial malignancy. The analysis revealed pretreatment serum HE4 cut off value of 69.7 pmol/l to predict endometrial malignancy (AUC 0.974; SE 0.013; CI –95 to 95 % = 0.951–1.000; sensitivity 86.7%, specificity 100%). Corresponding cut off for serum CA-125 was 34.50 U/mL (AUC 0.714; SE 0.048; CI –95 to 95% = 0.620–0.807; Sensitivity 43.3%, specificity 100%). Serum HE4 levels above the cut off were detected in 50 out of 60 EC patients and CA-125 levels in 22 out of 60 EC cases [Table/Fig-2,3].

**Comparative analysis of diagnostic value between serum HE4 and CA-125 for endometrial cancer:** The ROC analysis revealed that HE4 is superior to CA-125 in differentiating postmenopausal healthy controls [Table/Fig-4]. The sensitivity of HE4 in detecting EC patients was higher when compared to CA-125. The specificity of both HE4 and CA-125 was 100% [Table/Fig-3]. The diagnostic performance was compared between serum HE4, CA-125 and combined HE4+CA-125 values. The sensitivity of combination of HE4 and CA-125 to detect EC was same as that of HE4 [Table/Fig-3].

Association between serum HE4 and CA125 levels, clinical stages and pathological type of EC: On comparing, HE4 and CA125 levels between EC stages I vs. II/III, the difference was statistically significant ( $p<0.05$ ). The levels of serum HE4 and CA-125 were higher in the non-endometroid histology; but the difference was not statistically significant [Table/Fig-2].

**Analysis of the associations between serum HE4 levels, myometrial invasion and lymphnodal involvement of endometrial cancer:** Serum HE4 and CA-125 levels were significantly higher in Stage I EC with  $>50\%$  MI when compared to  $<50\%$  MI ( $p<0.05$ ). Patients with lymphnodal involvement also had significantly higher serum HE4 and CA-125 levels [Table/Fig-2].

## DISCUSSION

The present study was conducted to evaluate the clinical utility of HE4, a novel tumour biomarker, for diagnosis of EC and its association with high risk factors in Indian population.

Studies recently demonstrated that serum HE4 and CA-125 levels are significantly elevated in patients with EC [5–11]. Our data confirm these results. The present study indicated that the levels of serum HE4 and CA-125 were significantly higher in a preoperative endometrial tumour group compared with healthy postmenopausal women ( $p<0.05$ ).

Clinical characteristics			
Parameters	Endometrial cancer (n=60)	Control (n=60)	p-value
Age (Mean±SD)	62.77±6.61	60.77±7.11	0.264
Parity (Mean±SD)	2.26 ± 0.99	3.53 ± 1.10	<0.001
BMI (kg/m <sup>2</sup> )	27.4 ± 3.11	22.3 ± 2.71	<0.05
Pathological characteristics			
Histology	N (%)		
Endometroid adenocarcinoma	36 (60%)		
Non-endometroid carcinoma	24 (40%)		
Mucinous carcinoma	06 (10%)		
Papillary serous carcinoma	14 (23%)		
Clear cell carcinoma	04 (07%)		
Others	00 (00%)		
FIGO Stage	N (%)		
Stage I	42 (70%)		
Stage IA	26 (43%)		
Stage IB	16 (27%)		
Stage II	12 (20%)		
Stage III	06 (10%)		
Stage IV	00 (00%)		

**[Table/Fig-1]:** Clinical and pathological characteristics of patient cohort. †CA125, carbohydrate antigen 125; \*HE4, human epididymis secretory protein 4

Pathological Characteristics	Serum CA-125		Serum HE4	
	Mean ± SD (U/ml)	Number of Cases above Cut-off	Mean ± SD (pmol/l)	Number of Cases above Cut-off
Endometrial Cancer (n=60)	59.69 ± 77.50	22/60 (36.66%)	127.07±61.36	50/60 (83.33%)
Healthy Control (n=60)	18.65±7.63		38.71±9.05	
p-value	0.005		0.001	
<b>Histology</b>				
Endometroid Adenocarcinoma (n=36, 60%)	47.3± 35.38	11/36 (30.55%)	118.6±52.2	29/36 (80.55%)
Non-Endometroid Adenocarcinoma (n=24, 40%)	73.19±83.23	11/24 (45.83%)	141.01±72.9	21/24 (87.5%)
p-value	0.328		0.205	
<b>Myometrial Invasion (Stage I)</b>				
Stage IA (<50%) (n=26, %)	33.59±47.57	02/26 (7.69%)	109.92±54.07	24/26 (88.46%)
Stage IB (>50%) (n=16, %)	93.83±93.75	07/16 (43.75%)	150.72±63.61	11/16 (68.75%)
p-value	0.023		0.007	
<b>Lymphnode Involvement</b>				
Pelvic lymphnode (n=60, 100%)				
Present (n=6, 10%)	209.33±92.14	06/06 (100%)	248.30±45.76	06/06 (100%)
Absent (n=54, 90%)	43.07±54.27	16/54 (29.62%)	114.19±46.49	44/54 (81.48%)
p-value	0.01		0.006	
<b>Para-aortic Lymphnode</b>				
Present (n=0, 0%)	-		-	
Absent (n=60, 100%)	59.69±77.50		127.07±61.36	
<b>Stage</b>				
Stage I (n=42, 70%)	30.03±33.79	09/42 (21.42%)	112.53±46.88	35/42 (83.33%)
Stage II (n=12, 20%)	88.70±83.77	07/12 (58.33%)	120.02±46.63	09/12 (75%)
Stage III (n=6, 10%)	209.33±92.15	06/06 (100%)	248.30±45.76	06/06 (100%)
<b>p-value</b>				
Stage I vs II	0.020		0.739	
Stage II vs III	0.007		0.05	
Stage I vs III	<0.001		<0.001	

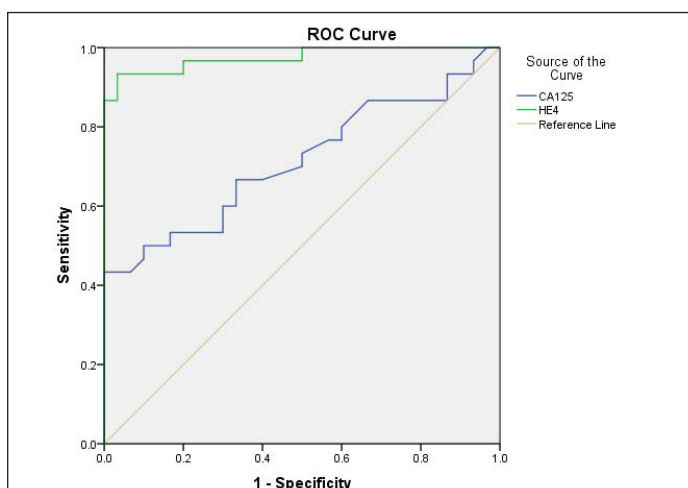
**[Table/Fig-2]:** Comparative analysis of Serum HE4<sup>†</sup> and CA-125<sup>‡</sup> levels for each group.

<sup>†</sup>CA125, carbohydrate antigen 125; <sup>‡</sup>HE4, human epididymis secretory protein 4

Parameters	AUC	Sensitivity	Specificity	Cut off Value
Serum HE4	0.974 (CI, 0.951-1.00), SE 0.013	86.7%	100%	69.72 pmol/L
Serum CA-125	0.714 (CI, 0.620-0.807), SE 0.048	43.3%	100%	34.50 U/L
Serum HE4+CA-125	-	86.7%	100%	-

**[Table/Fig-3]:** Comparative analysis of diagnostic value of CA-125<sup>†</sup> and HE4<sup>‡</sup>.

<sup>†</sup>CA125, carbohydrate antigen 125; <sup>‡</sup>HE4, human epididymis secretory protein 4



**[Table/Fig-4]:** Receiver Operator Characteristics (ROC) curve of pretreatment a) Serum HE4 and b) CA-125 used as a predictor of diagnosis of endometrial carcinoma.

CA-125, carbohydrate antigen 125; HE4, human epididymis secretory protein 4

Our results showed that the HE4 has the AUC of 0.974 (0.951-1.00), SE-0.013 for detection of EC. Corresponding AUC for CA-125 was 0.714 (0.620-0.807), SE-0.048. The maximum diagnostic value for the diagnosis of EC occurred when the cut off value of HE4 was 69.7 pmol/l. Unfortunately, no clear cut off value for HE4 serum levels has been defined for detection of EC patients till date. In fact, for detection, only a few studies reported a cut off value, which incidentally differed from study to study. However, based on the meta-analysis by Bie Y and Zhang Z the best HE4 cut-off in EC diagnosis ranged between 50 and 70 pmol/L, resulting in 78.8% sensitivity and 100% specificity for all stages [13].

In our study, the sensitivity of HE4 for detection of EC of all stages was higher than CA-125 (86.7% vs. 43.3%,  $p < 0.05$ ) and specificity was 100% for both CA-125 and HE4, when compared to healthy control. The results of the present study are consistent with that of Angioli R et al. and Moore RG et al., who demonstrated that HE4 as a single marker exhibits higher sensitivity in detecting all stages of EC when compared to CA-125 [5,7].

There is a vast variation in sensitivity and specificity among studies which could be explained by different methods of estimation or different cut off values of tumour biomarkers used. Characteristics of patient population also results in heterogeneity of the diagnostic accuracy of biomarkers. Our study reported higher sensitivity of HE4 in detecting EC when compared to Angioli R et al., (59.4% at a specificity of 92%) and Bignotti et al., (67% at a specificity of 95%) [9,10]. Higher sensitivity of HE4 in detecting EC was probably due to inclusion of all histologies of EC with higher levels in non endometroid type; whereas Bignotti E et al. considered only endometroid EC [10].

Mean value of HE4 and CA-125 increases with stage of EC. There was a statistically significant difference comparing mean value of HE4 and CA-125 in EC patients in Stage I vs Stage II/III and Stage II vs Stage III patients ( $p$ -value<0.05) [Table/Fig-2]. Our results are in accordance with other authors who observed that the mean levels of CA-125 were not elevated in early EC; whereas the levels of HE4 had significantly increased in early stage EC [7, 14, 15]. Thus, CA-125 was not useful in diagnosis of early EC. Zhang W et al., compared EC patients and a healthy control group and concluded that rise of HE4 occurred earlier than that of CA-125 [16].

We also found that the diagnostic value of HE4 was superior to that of CA-125 in Stage I EC patients, where HE4 detected 83.33% (35/42) cases; while 21.42% (9/42) of cases were detected by CA-125, whereas in Stage II, 75% (09/12) and 58.33% (7/12) cases were detected by HE4 and CA-125 respectively. In Stage III, all (100%) cases were detected by both CA-125 and HE4. There were no stage IV EC cases. Angioli R et al., reported elevated CA-125 levels in 19.8% EC cases of Stage I [5]. Beck EP et al., demonstrated that only 15% of Stage I uterine cancer patients, 33% of Stage II, and 62% of Stage III patients had elevated CA-125 levels [17].

Capriglione S et al., observed that 42% of Stage I A, 77% of IB, 90% of Stage II, 93% of Stage III and 100% of Stage IV patients presented with HE4 levels above the standard cut off of 70 pmol/L [18]. On the contrary, Kalogera E et al., demonstrated in his study that HE4 was not able to differentiate between early stage EC patients and controls ( $p=0.49$ ); thus raising the question regarding its value as a screening tool for EC or detection of early recurrence [14]. Results of our study demonstrated the potential utility of HE4 as a screening tool as it was able to diagnose 23/26 (88.46%) of Stage I A EC cases in comparison to 2/26 cases by CA-125.

However, the sensitivity of HE4 (71%) in detecting advanced stage patients was higher when compared to the sensitivity of CA-125 (58%) as per Saarelainen SK et al., [19]. Angioli R et al., in his critical review on HE4 performance in EC, concluded that the major advantage of HE4 lies in its specificity and improved detection of early stage EC as in case of ovarian and tubal cancers reported by Jacob F et al., [9,20].

Results of present study and other studies also suggest that serum HE4 and CA-125 may offer preliminary risk stratification prior to surgery [17, 20-22]. A serum marker that could provide pretreatment estimation of early stage and low risk disease would potentially find clinical application in the management strategy of identification of suitable candidates with absent or superficial MI and lymph nodal involvement.

Various investigators demonstrated that pre-surgical HE4 and CA-125 markers were elevated in endometrial carcinoma patients with MI [8, 11, 18]. The results of the present study were in agreement with previous reports regarding association between HE4 and CA-125 and MI. Patients with Stage IA disease (<50% MI) had a significantly lower mean serum HE4 value than patients with Stage IB disease with >50% MI (109.92±54.07 pmol/L vs. 150.72±63.61 pmol/L;  $p=0.007$ ). Corresponding mean values of CA-125 were also higher in Stage IB as compared to Stage IA of EC (33.59±47.57 U/mL vs. 93.88±93.75 U/mL;  $p=0.023$ ).

Moore RG et al., [11] and Brennan DJ et al., [15] observed HE4 to be a better predictor of outer half MI than CA-125. Kalogera et al., also observed that median HE4 levels were significantly elevated in EC patients with MI >50% compared to those with MI≤50% ( $p<0.001$ ) [14]. The results of the present study demonstrated that the benefit of CA-125 lies in its high specificity for detecting EC patients with <50% MI. Serum CA-125 levels below cut off value indicate an early stage of EC. Twenty four out of 26 Stage I EC cases with MI <50% had serum CA-125 levels below cut off value.

Presurgical CA-125 and HE4 levels were shown to be related to the lymph node metastasis [8, 10]. We also found that significantly higher

levels of HE4 and CA-125 in cases with lymph nodal involvement. Infact, there was a statistical significant difference comparing Stage I versus Stage III ( $p<0.001$ ). Antonsen SL et al., and Bignotti E et al., also found significant differences in the tumour marker levels in patients with LNM versus no LNM ( $p = 0.013$  and  $p < 0.001$ , respectively [8,10]. Infact Antonsen SL et al., reported CA-125 to be more precise than HE4 for LNM; whereas Prueksaritanond M et al., found that the performance of serum HE4 in identifying EC patients at low risk and high risk of lymph node metastasis was significantly better than that of CA-125 (AUC 0.88 vs. 0.65,  $p=0.003$ ) [21]. These findings suggest a potential role of HE4 and CA-125 in EC stage prediction and myometrial involvement and thus identify patients suitable for pelvic and para-aortic lymphadenectomy.

The diagnostic value of tumour biomarkers may vary with the histopathological type. The present study observed that the level of serum HE4 and CA-125 was higher in non-endometrioid EC patients; but the difference compared with endometrioid types was not statistically significant for serum HE4 and CA-125. Kalogera E et al., and Mutz-Dehbalaiie I et al., observed no association between serum HE4 levels and histological variants of EC [14,22]. Contrary to our findings, Omer B et al., reported significantly higher ( $p<0.001$ ) median HE4 value of 130.7 pmol/L in endometrioid compared with HE4 value of 86.8 pmol/L in non-endometrioid EC cases [23]. Angioli R et al., also reported higher HE4 values in endometrioid EC compared to non endometrioid cancers [5].

On combining HE4 and CA-125 (if both were positive, the combination was considered positive), the sensitivity and specificity was as that of serum HE4. Therefore, the present study suggests that the addition of serum CA-125 to HE4 provides no additional diagnostic benefit when compared to HE4 alone. In contrast, Bignotti E et al., and Moore RG et al., reported improved sensitivity for higher stages (Stage II-IV) by combining both the markers [10,11].

However, combination of both biomarkers has a prognostic value. When both HE4 and CA-125 were below cut off value, then all (3/3) EC cases without MI invasion or LN involvement were correctly diagnosed. This shows that normal values of both the tumour marker in histologically confirmed cases on endometrial biopsy specimen indicates good prognosis combination of high serum levels of HE4 > 200 pmol/L and CA-125> 34.5U/ml were observed in all (6/6) Stage III EC cases. When both the markers were significantly high, it represents higher stage with poor prognosis.

In literature, very few studies have evaluated the effect of tumour biomarkers for EC detection and/or monitoring. This is due to the fact that EC is diagnosed early due to vaginal bleeding. As the incidence of EC is increasing, unusual presentation and late diagnosis in advanced stage with poor prognosis not uncommon. This justifies the need to identify diagnostic and prognostic biomarkers for EC as in the case of ovarian cancer.

## LIMITATION

Limitation of our study is small sample size and inclusion of only postmenopausal women.

## CONCLUSION

In conclusion, our results confirm that HE4 is a sensitive diagnostic serum marker for detection of EC patients, exhibiting a better diagnostic performance compared to CA-125. In particular, good performance of HE4 in diagnosis of early stages EC indicates its usefulness as screening tool, monitor therapy and detect early recurrence. Large prospective clinical studies including both pre and postmenopausal EC cases are certainly necessary to support these findings and to assess the potential of HE4 as a screening modality or new tool for preoperative risk stratification and postoperative surveillance of endometrial cancer patients.

## REFERENCES

- [1] Gao Y, Dai X, Chen L, Lee AC, Tong M, Wise M, et al. Body mass index is positively associated with endometrial cancer in Chinese women, especially prior to menopause. *Journal of Cancer*. 2016;7(9):1169-73.
- [2] Luo J, Beresford S, Chen C, R Chlebowski, L Garcia, L Kuller, et al. Association between diabetes, diabetes treatment and risk of developing endometrial cancer. *British Journal of Cancer*. 2014; 111(7):1432-39.
- [3] Jemal A, Siegel R, Ward E, Murray T, Xu J, Smigal C, et al. Cancer statistics, 2006. *CA Cancer J Clin*. 2006;56 (2):106-30.
- [4] Li J, Dowdy S, Tipton T, Podratz K, Lu WG, Xie X, et al. HE4 as a biomarker for ovarian and endometrial cancer management. *Expert Rev Mol Diagn*. 2009;9(6):555-66.
- [5] Angioli R, Plotti F, Capriglione S, Montera R, Damiani P, Ricciardi R, et al. The role of novel biomarker HE4 in endometrial cancer: a case control prospective study. *Tumour Biol*. 2013;34(1):571-76.
- [6] Powell JL, Hill KA, Shiro BC, Diehl SJ, Gajewski WH. Preoperative serum CA-125 levels in treating endometrial cancer. *J Reprod Med*. 2005;50:585-90.
- [7] Moore RG, Brown AK, Miller MC, Moore RG, Brown AK, Miller MC, et al. Utility of a novel serum tumor biomarker HE4 in patients with endometrioid adenocarcinoma of the uterus. *Gynecologic oncology*. 2008;110(2):196-201.
- [8] Antonsen SL, Høgdal E, Christensen IJ, Lydolph MC, Tabor A, Loft Jakobsen A, et al. HE4 and CA125 levels in the preoperative assessment of endometrial cancer patients: a prospective multicenter study (ENDOMET). *Acta Obstetrica et Gynecologica Scandinavica*. 2013 nov;92(11):1313-22.
- [9] Angioli R, Miranda A, Aloisi A, Montera R, Capriglione S, De Cicco Nardone C, et al. A critical review on HE4 performance in endometrial cancer: where are we now? *Tumour Biol*. 2014;35:881-87.
- [10] Bignotti E, Ragnoli M, Zanotti L, Calza S, Falchetti M, Lonardi S, et al. Diagnostic and prognostic impact of serum HE4 detection in endometrial carcinoma patients. *British Journal of Cancer*. 2011;104(9):1418-25.
- [11] Moore RG, Miller CM, Brown AK, Robison K, Steinhoff M, Lambert-Messerlian G. Utility of tumor marker HE4 to predict depth of myometrial invasion in endometrioid adenocarcinoma of the uterus. *Int J Gynecol Cancer*. 2011;21(7):1185-90.
- [12] Amant F, Mirza MR, Koskas M, Creutzberg CL. Cancer of the corpus uteri. *Int J Gynaecol Obstet*. 2015;131 Suppl 2:S96-104.
- [13] Bie Y, Zhang Z. Diagnostic value of serum HE4 in endometrial cancer: a meta-analysis. *World Journal of Surgical Oncology*. 2014;12:169.
- [14] Kalogera E, Scholler N, Powless C, Weaver A, Drapkin R, Li J, et al. Correlation of serum HE4 with tumor size and myometrial invasion in endometrial cancer. *Gynecologic Oncology*. 2012;124(2):270-75.
- [15] Brennan DJ, Hackethal A, Metcalf AM, Coward J, Ferguson K, Oehler MK, et al. Serum HE4 as a prognostic marker in endometrial cancer—a population based study. *Gynecol Oncol*. 2014;132(1):159-65.
- [16] Zhang W, Chan H, Wei L, Pan Z, Zhang J, Li L. Overexpression of heparanase in ovarian cancer and its clinical significance. *Oncol Rep*. 2013;30(5):2279-87.
- [17] Beck EP, Wagner M, Anselmino L, Xu F, Bast Jr RC, Jaeger W. IsOVX1 a suitable marker for endometrial cancer? *Gynecol Oncol*. 1997;65(2):291-96.
- [18] Capriglione S, Plotti F, Miranda A, Ricciardi R, Scaletta G, Aloisi A, et al. Utility of tumor marker HE4 as prognostic factor in endometrial cancer: a single-center controlled study. *Tumour Biol*. 2015;36(6):4151-56.
- [19] Saarelainen SK, Peltonen N, Lehtimäki T, Perheentupa A, VuentoMH, Mäenpää JU. Predictive value of serum human epididymisprotein 4 and cancer antigen 125 concentrations in endometrial carcinoma. *Am J Obstet Gynecol*. 2013;209(2):142.e1-e6.
- [20] Jacob F, Meier M, Caduff R, Goldstein D, Pochechueva T, Hacker N, et al. No benefit from combining HE4 and CA125 as ovarian tumor markers in a clinical setting. *Gynecol Oncol*. 2011;121(3):487-91.
- [21] Prueksaritanond N, Cheanpracha P, Yanaranop M. Association of serum HE4 with primary tumor diameter and depth of myometrial invasion in endometrial cancer patients at Rajavithi Hospital. *Asian Pac J Cancer Prev*. 2016;17(3):1489-92.
- [22] Mutz-Dehbalaiie I, Egle D, Fessler S, Hubalek M, Fiegl H, Marth C, et al. HE4 is an independent prognostic marker in endometrial cancer patients. *Gynecol Oncol*. 2012;126(2):186-91.
- [23] Omer B, Genc S, Takmaz O, Dirican A, Kusku-Kiraz Z, Berkman S, et al. The diagnostic role of human epididymis protein 4 and serum amyloid-A in early-stage endometrial cancer patients. *Tumour Biol*. 2013;34(5):2645-50.

### PARTICULARS OF CONTRIBUTORS:

1. Professor, Department of Obstetrics and Gynaecology, Vardhman Mahavir Medical College and Safdarjung Hospital, Delhi, India.
2. Attending Consultant, Department of Radiation Oncology, Rajiv Gandhi Cancer Institute and Research Centre, Delhi, India.
3. Postgraduate Student, Department of Obstetrics and Gynaecology, Vardhman Mahavir Medical College and Safdarjung Hospital, Delhi, India.
4. Senior Scientist, Department of Research, National Institute of Cancer Prevention and Research, Noida, Uttar Pradesh, India.
5. Medical Officer, Department of Oncology, Rajiv Gandhi Cancer Institute and Research Centre, New Delhi, India.

### NAME, ADDRESS, E-MAIL ID OF THE CORRESPONDING AUTHOR:

Dr. Abhinav Dewan,  
115, C-13, Sector-3, Rohini-110085, Delhi, India.  
E-mail: abhinavdewan25@gmail.com

Date of Submission: **Mar 30, 2017**  
Date of Peer Review: **Apr 05, 2017**  
Date of Acceptance: **May 19, 2017**  
Date of Publishing: **Jul 01, 2017**

FINANCIAL OR OTHER COMPETING INTERESTS: None.