

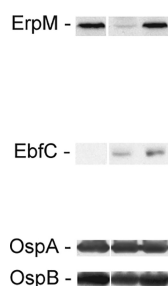


## Correction for Jutras et al., “Changes in Bacterial Growth Rate Govern Expression of the *Borrelia burgdorferi* OspC and Erp Infection-Associated Surface Proteins”

Brandon L. Jutras, Alicia M. Chenail, and Brian Stevenson

Department of Microbiology, Immunology, and Molecular Genetics, University of Kentucky College of Medicine, Lexington, Kentucky, USA

Volume 195, no. 4, p. 757–764, 2013, <https://doi.org/10.1128/JB.01956-12>. Page 761, Fig. 4: The published figure did not indicate splices introduced into the original image for several blots. In the corrected panels below, tooling has been added to indicate splicing.



**Citation** Jutras BL, Chenail AM, Stevenson B. 2017. Correction for Jutras et al., “Changes in bacterial growth rate govern expression of the *Borrelia burgdorferi* OspC and Erp infection-associated surface proteins.” *J Bacteriol* 199:e00386-17. <https://doi.org/10.1128/JB.00386-17>.

**Copyright** © 2017 American Society for Microbiology. All Rights Reserved.

Page 761, Fig. 4 legend: The following sentences should be added at the end: “For each protein immunoblot series, all of the illustrated lanes were taken from a single exposure of the same blot. Some intervening spaces were removed for clarity in the final figure, as indicated by white lines.”

Correction of these errors does not change any of the results or conclusions of the article.