

# ***MGMT* methylation correlates with melphalan pelvic perfusion survival in stage III melanoma patients: a pilot study**

Stefano Guadagni<sup>a</sup>, Giammaria Fiorentini<sup>d</sup>, Marco Clementi<sup>b</sup>, Giancarlo Palumbo<sup>b</sup>, Francesco Masedu<sup>a</sup>, Marcello Deraco<sup>e</sup>, Giovanni De Manzoni<sup>f</sup>, Alessandro Chiominto<sup>c</sup>, Marco Valenti<sup>a</sup> and Cristina Pellegrini<sup>a</sup>

Approximately 25% of melanoma patients with locoregional metastases are nonresponsive to new molecular target therapy and immunotherapy. When metastases are located in the pelvis, melphalan hypoxic perfusion can be an optional treatment. Because methylation of *MGMT* promoter increases the efficacy of alkylating agents, studies on melanoma outcome of patients treated with melphalan regional chemotherapy should consider this epigenetic change. This study aims to evaluate whether the survival of stage III melanoma patients treated with melphalan regional chemotherapy may be correlated with *MGMT* methylation status. The metastatic tissues of 27 stage III melanoma patients with locoregional metastases located in the pelvis subjected to melphalan hypoxic pelvic perfusion were examined. The methylation status of the *MGMT* promoter was investigated by MS-MLPA probes analysis and the presence of the *BRAF* V600E mutation was analyzed by CAST-PCR. The median survival times were estimated using the Kaplan–Meier curves and were stratified according to the clinicopathological characteristics of patients and lesions. The overall median survival time was 17 months. The 1-year, 3-year, and 5-year survival rates were 66.7, 18.5, and 7.4%, respectively. Disease stage, burden, and percentage of *MGMT*

methylation significantly affected survival. We estimated an *MGMT* promoter methylation cut-off of at least 14%, which was significantly associated with a longer survival after melphalan regional chemotherapy. Our data suggest that *MGMT* promoter methylation could be an important factor in determining which melanoma patients should receive melphalan regional chemotherapy, but its prognostic significance in the routine clinical setting needs to be clarified in a larger study. *Melanoma Res* 27:439–447 Copyright © 2017 The Author(s). Published by Wolters Kluwer Health, Inc.

*Melanoma Research* 2017, 27:439–447

**Keywords:** melanoma, melphalan, methylation, *MGMT*, pelvis, perfusion

Departments of <sup>a</sup>Applied Clinical Sciences and Biotechnology, <sup>b</sup>Life, Health and Environmental Sciences, University of L'Aquila, <sup>c</sup>Department of Pathology, S. Salvatore Hospital, L'Aquila, <sup>d</sup>Department of Oncology and Hematology, Azienda Ospedaliera 'Ospedali Riuniti Marche Nord', Pesaro, <sup>e</sup>Istituto Tumori Milano, Milano and <sup>f</sup>Department of Surgical Sciences, University of Verona, Verona, Italy

Correspondence to Stefano Guadagni, MD, Department of Applied Clinical Sciences and Biotechnology, Section of General Surgery, University of L'Aquila, 67100 L'Aquila, Italy  
Tel: +39 333 943 6171; fax: +39 086 231 9237;  
e-mail: stefano.guadagni@univaq.it

Received 24 March 2017 Accepted 20 April 2017

## **Introduction**

Approximately 25% of melanoma patients with locoregional metastases are nonresponsive to new molecular target therapy and immunotherapy [1]. For these patients, regional chemotherapy with alkylating agents could be an option on the basis of the results of several published reports for the lower extremity [2,3] and pelvis [4–9]. Being highly reactive molecules, the alkylating agents induce cell death by binding to DNA [10]. There are two types of alkylating drugs: monofunctional, including temozolomide and dacarbazine, which produce a cross-link between adjacent strands of DNA, and

bifunctional, such as melphalan, which produces inter-strand and intrastrand cross-links; melphalan also alkylates RNA and protein structures [11]. DNA lesions produced by melphalan require several and complex repair mechanisms [12]. Many DNA adducts can be repaired by DNA repair enzymes such as the O<sup>6</sup>-methylguanine-DNA methyltransferase (*MGMT*) that repairs O<sup>6</sup>-alkylguanine adducts and reverses the cytotoxicity induced by the two types of alkylating agents [13,14]. Overexpression of *MGMT* prevents the death of cancer cells induced by alkylating agents; in contrast, a lack of *MGMT* could increase the efficacy of alkylating chemotherapy. Considering that the *MGMT* gene is not commonly mutated or deleted, the inactivation of this gene may be caused by epigenetic changes such as hypermethylation at the promoter site or at exon 1 with loss of *MGMT* expression [10].

This is an open-access article distributed under the terms of the Creative Commons Attribution-Non Commercial-No Derivatives License 4.0 (CCBY-NC-ND), where it is permissible to download and share the work provided it is properly cited. The work cannot be changed in any way or used commercially without permission from the journal.

The hypothesis of this study is that the survival of melanoma patients treated with melphalan regional chemotherapy may be correlated with the *MGMT* methylation status. The carcinogenesis process is very complex in relation to the variety of melphalan action mechanisms and DNA repair systems; thus, an accurate homogeneity of both patient sample and regional chemotherapy treatment procedure is absolutely necessary to evaluate the hypothesis.

We investigated whether epigenetic silencing of *MGMT* could influence the survival of stage III melanoma patients affected by metastases in the pelvic and/or inguinal regions subjected to melphalan monotherapy hypoxic pelvic perfusion.

## Patients and methods

### Patients

This is a retrospective review of a subset of a prospective database reflecting a larger trial of melanoma patients undergoing melphalan hypoxic perfusion (ClinicalTrials.

gov Identifier NCT01920516). The subset included 27 patients (Table 1) with pelvic and/or inguinal melanoma locoregional metastases at stages IIIB and IIIC [15]. These patients, requiring melphalan hypoxic pelvic perfusion, were referred only to our institution to achieve homogeneity of performance. From June 2003 to July 2012, 27 patients received 131 treatments at the University of L'Aquila, L'Aquila, Italy. Before the beginning of the treatments, all patients were in progression after previous therapies. All patients had Eastern Cooperative Oncology Group performance status of 0 or 1. Patients were classified as 'High Burden' when they had at least 10 lesions or one lesion more than 3 cm in size or as 'Low Burden' when they had less than 10 lesions and no lesion more than 3 cm in size [16].

Patients with associated lesions lower than the middle part of the thigh requiring a larger perfusion compartment and patients with macroscopic extra-pelvic disease were excluded from the study. Moreover, patients receiving any kind of chemotherapy, immune-therapy, or target therapy after the last melphalan treatment were considered ineligible.

The study was approved by the Local Ethics Committee and was carried out according to the Declaration of Helsinki Principles. Written informed consent was obtained from all participants.

### Study design

Eligibility criteria for hypoxic pelvic perfusion have been published previously [8]. The clinical protocol provided repetition of both perfusion and palliative cytoreductive surgery at a time interval of ~6–7 weeks. Criteria for excision were as follows: (a) the debulking of deep masses and superficial lesions and (b) the study of histological/molecular parameters in metastatic tissue. Excision was always attempted and avoided only when bleeding or a difficult wound closure was anticipated. Melphalan hypoxic pelvic perfusions were performed using surgical or percutaneous approaches. The percutaneous perfusion technique was not performed when the diameter of the common femoral artery was 7 mm or less in relation to the risk of vessel dissection. The rationale and timing of repetition were based on two previous pilot studies [8,17], showing that the relapse was always observed in the presence of residual tumor and that the progression started within 8 weeks when aggressive disease was present. In case of a complete response, the purpose was to bolster the clinical results obtained until 1 year of progression-free survival was achieved; the treatments were not repeated if the patient did not consent or the general condition worsened. In patients achieving a partial response or stable disease, the purpose was to repeat the combined treatment in each case with residual tumor. In general, after a combined treatment, some metastases disappear or are excised, but new metastases can grow. Treatments were not repeated

**Table 1 Characteristics of 27 patients and 131 procedures**

	<i>n</i> (%)
Patients ( <i>n</i> = 27)	
Sex	
Female	20 (74.1)
Male	7 (25.9)
Age (mean ± SD) (years)	64.1 ± 15.3
Age by sex (mean ± SD) (years)	
Female	67.7 ± 12.8
Male	53.7 ± 18.0
Previous site of melanoma	
Labia/vagina	1 (3.7)
Anus	2 (7.4)
Anterior abdominal wall	1 (3.7)
Back	3 (11.1)
Lower extremity	20 (74.1)
Previous treatments	
Palliative surgery	27 (100.0)
Alkylants-based systemic chemotherapy	4 (14.8)
Immunotherapy with interferon α and/or interleukin-2	4 (14.8)
Isolated limb perfusion with tumor necrosis factor	4 (14.8)
Electrochemotherapy	1 (3.7)
Ipilimumab	1 (3.7)
Melanoma metastases ( <i>n</i> = 27)	
Stages	
IIIB	4 (14.8)
IIIC	23 (85.2)
Burden	
Low burden (< 10 nodules; or no lesion > 3 cm)	15 (55.6)
High burden (≥ 10 nodules; or one lesion > 3 cm)	12 (44.4)
Melanin	
Pigmented lesions	12 (44.4)
Not pigmented lesions	15 (55.6)
Mitotic rate	
More than 1 mitosis/mm <sup>2</sup>	16 (59.3)
Less than 1 mitosis/mm <sup>2</sup>	11 (40.7)
<i>BRAF</i> status	
Wild type	11 (40.7)
V600E mutated type	16 (59.3)
Melphalan hypoxic perfusions technique ( <i>n</i> = 131)	
Percutaneous technique	89 (67.9)
Surgical technique	
Femoral	30
Iliac	12
With lymphadenectomy	40

if the patient did not consent, locoregional metastases progressed more than 20% in dimensions and numbers, simultaneous distant relapses occurred, or the general condition of the patient worsened.

**Hypoxic pelvic perfusion techniques**

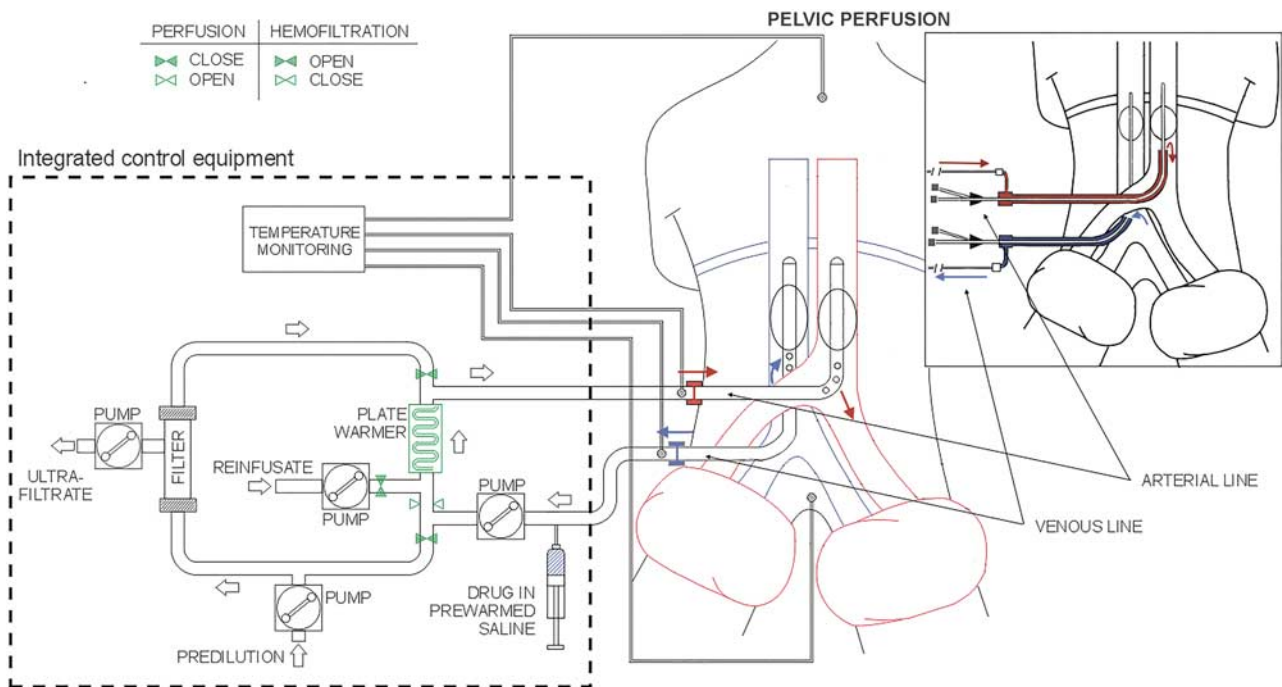
The perfusion was performed under general anesthesia as described previously [8]. Hypoxic perfusion with hemofiltration included three phases: isolation, perfusion, and hemofiltration.

**First phase**

The first phase is the isolation phase in which the blood flow to the aorta and the inferior vena cava vein is blocked by using endovascular balloon catheters and at the level of the thighs by using pneumatic cuffs. The isolation phase can be performed by a surgical [8] or a percutaneous approach [9,18,19] (Fig. 1). When perfusion had to be repeated at the same site, the endovascular balloon catheters were positioned using a percutaneous approach. This procedure was not performed when the diameter of the common femoral artery was 7 mm or less, which made vessel dissection risky. When an associated lymphadenectomy was necessary, the catheters were positioned by exposing the femoral artery and vein through a short longitudinal incision in the groin. When this procedure was performed more than two or three times in the same patient and the femoral vessels were surrounded by fibrous tissue, the iliac vessels were exposed.

In the surgical technique, after systemic heparinization (150 U/kg heparin), a 3-lumen, 12-French balloon catheter (pfm medical ag, Cologne, Germany) was introduced into the inferior vena cava through the saphenous vein (or iliac vein) and into the aorta through the femoral artery (or iliac artery); the catheters were positioned below the renal vessels and above the aortic and venous bifurcation using a guide wire under fluoroscopic guidance. One of the three lumens of the catheter was used for blood circulation and the other lumens were used for inflating the balloons and positioning the guide wire. The percutaneous procedure requires puncturing the femoral vessels, which was performed using two 11-French introducers, each with a hemostatic valve and a dilatator (Radifocus; Terumo, Tokyo, Japan). The arterial introducer was 25 cm long and the venous introducer was 10 cm long. We also used two double-lumen 8-French balloon catheters (pfm medical ag). In each catheter, one lumen was used to inflate the balloons and the other lumen was used to position the guide wire. Blood circulation and drug perfusion took place in a long, hollow cylindrical space between the introducer wall and the catheter, with blood flowing through a ring surface at the top of the space. To suspend the blood flow, the balloons were inflated with the radiopaque dye diatrizoate diluted in an isotonic sodium chloride solution. To complete the isolation of the pelvis, two large-cuff orthopedic tourniquets were placed around each of the thighs and inflated just before starting the perfusion.

Fig. 1



Schema of surgical and percutaneous hypoxic pelvic perfusion with hemofiltration.

### Second phase

The second phase is the perfusion phase in which perfusion occurs through extracorporeal blood circulation. The infusion channels of the arterial and venous surgical catheters or the hemostatic valve channels of the 11-French introducers were connected to a hypoxic perfusion tubing set mounted on a regional cancer therapy-dedicated circulation device (Performer LRT; RanD, Medolla, Italy). The circuit was primed with an isotonic sodium chloride solution containing heparin (10 000 U/l). Once the requisite blood flow (~100 ml/min) in the extracorporeal circuit (aspiration from the inferior cava vein and infusion into the aorta) was established, drug perfusion was started. According to previous pilot studies [8,17], 30 mg/m<sup>2</sup> of melphalan, diluted in 250 ml of an isotonic sodium chloride solution containing 16 mg of dexamethasone sodium phosphate, was administered through the circuit over a 3-min period. The extracorporeal circuit (Fig. 1) connected to the circulation device contains a heating element and a hemofiltration module, both of which are controlled by the device during the perfusion phase and the subsequent hemofiltration phase. Perfusion was administered for 20 min. The temperature loss was ~1°C/m of the tubing set. The length of the tubing set was 5 m; hence, the temperature required to ensure normothermia was 42°C at the outlet level of the heating element. The circulation device has sensors that monitor and regulate the blood flow, withdrawal pressure, infusion pressure, circuit and patient temperatures, hemofiltration parameters, and save the data.

### Third phase

The third phase is the hemofiltration phase. After perfusion, the catheter balloons and pneumatic cuffs were deflated and normal circulation was restored. Hemofiltration was then administered for 60 min through the circuit. The blood flow was increased to ~200 ml/min and, to guarantee this value, the aorta was the withdrawal site. The temperature at the outlet level of the heating element was decreased to 39°C. A polyamide hemofilter with a surface area of 2.1 m<sup>2</sup> was used for filtration. After filtration, the catheters were withdrawn and the vessels were repaired. Approximately 30 min of compression hemostasis was administered after the percutaneous technique. Protamine was injected at 200 IU/kg to reverse the anticoagulant effects of heparin.

### Tumor response criteria and adverse events

Response was determined 30 days after each perfusion. Tumor response was due to perfusion that involved all lesions; additionally, the surgical excision concurred to response. For deep masses and lymph nodes, computed tomography, nuclear magnetic resonance, and PET were used to evaluate responses that were classified using the Response Evaluation Criteria in Solid Tumors, version 1.1 [20]; responses of patients treated before 2009 were

retrospectively reclassified. Responses of superficial lesions were assessed on the basis of inspection and photocomparing. Adverse events were evaluated using CTCAE v4.03 (National Cancer Institute, Bethesda, Massachusetts, USA).

### Pathology and molecular diagnostics

Metastatic lesions were surgically excised at the first melphalan treatment. For each patient, one specimen was subjected to histopathological review and molecular analysis. The growth pattern, the mitotic rate (<1 or ≥1 mitosis/m<sup>2</sup>), the presence of melanin-producing cells (pigmented or not pigmented cells), and tumor-infiltrating lymphocyte were assessed in the histopathological report.

For all excised lesions, DNA was isolated from five formalin-fixed paraffin-embedded tissue sections, each 10 μm in thickness, using the DNA mini kit (Qiagen, Hilden, Germany) according to the manufacturer's protocol. The concentrations and the quality of DNA were determined using the Qubit fluorometer (Thermo-Fisher, Foster City, California, USA).

The methylation status of the *MGMT* promoter was tested using the MS-MLPA probe mix prepared by MRC-Holland (Amsterdam, the Netherlands) (Salsa MS-MLPA Kit ME011 MMR), which includes six probes specific for the *MGMT* promoter region containing an *Hha1* recognition site. The procedure was performed according to the manufacturer's protocol. *Hha1* (R6441; Promega, Madison, Wisconsin, USA), a methylation-sensitive restriction enzyme that cuts unmethylated GCGC sites, was applied to each set of samples. The resultant PCR fragments were separated by capillary gel electrophoresis on a 3500 Genetic-Analyzer (Thermo-Fisher). The CpGenome universal methylated DNA and unmethylated DNA (Chemicon; Millipore, Billerica, Massachusetts, USA) were included as controls in each set of MS-MLPA. The methylation status was quantified using GeneMarker software (version 1.5; Soft Genetics, State College, Pennsylvania, USA). To compensate for the differences in the efficiency of the PCR for the individual samples, the peak value of each probe was normalized by dividing it by the peak of the control probes. To evaluate the methylation status, the methylation ratio was calculated by the average obtained by dividing each normalized peak value of the digested sample by that of the corresponding undigested sample. This value corresponds to the percentage of methylated sequences.

Mutational *BRAF* V600E status was investigated using competitive allele-specific hydrolysis probes (TaqMan), PCR technology (CAST) [21] (Thermo-Fischer).

### Statistical analysis

The analysis provided descriptive statistics estimated with a 95% confidence interval. Median survival times (MST) was estimated using the Kaplan–Meier product

limit estimator. We recorded deaths because of pathologically confirmed locoregional metastases.

Overall survival times were stratified according to the clinical variables that potentially affect survival. Log-rank tests were used to assess the significance of the differences between the groups. Hazard ratios were estimated using a proportional hazard Cox regression model. The statistical analysis was carried out using STATA software, version 14 (StataCorp, College Station, Texas, USA). Data were presented as mean  $\pm$  SD.

## Results

### Patients' and tumors' characteristics

A total of 27 melanoma patients (20 women and seven men) with pelvic and/or inguinal locoregional metastases were enrolled in this study. The demographic and clinical characteristics of patients and related tumors are listed in Table 1. According to the histopathological review of tumors, all surgical specimens had an epithelioid cell pattern, whereas no one showed tumor-infiltrating lymphocytes.

### Treatment characteristics and clinical outcomes

Overall, 131 melphalan perfusion procedures including 42 surgical and 89 percutaneous approaches were performed. The median number of treatments received by each patient was 4 (mean:  $4.8 \pm 3.2$ ). No deaths occurred during the 131 procedures performed and in the post-operative period. One patient, after a first partial response, refused further treatments.

Figure 2 shows the responses to each treatment for each patient. The overall response rate after the first treatment was 100.0%, a complete response being observed in two of 27 (7.4%) patients and a partial response in 25 of 27 (92.6%) patients. No patients experienced disease progression within 30 days after the first treatment. Figure 3 shows the percentages of responses in the following treatments.

### Adverse events

No technical (i.e. balloon rupture), hemodynamic, or vascular complications occurred during the procedures. Three cases of grade 2 seroma [3/42 (7.1%)], three cases of grade 2 persistent leakage of lymphatic fluid from the incision [3/42 (7.1%)], and one case grade 1 wound infection [1/27 (2.4%)] were registered in the group of 42 surgical procedures (associated with lymphadenectomy in 40 cases). Five cases of grade 1 inguinal hematoma [5/89 (5.6%)] were observed in the group of 89 percutaneous procedures. Eighteen cases of grade 1 bone marrow hypocellularity [18/131 (13.7%)], 12 cases of grade 2 [12/131 (9.2%)], and five cases of grade 3 [5/131 (3.8%)] were registered in all 131 procedures. Treatments were interrupted for hematological toxicity in two of 27 (7.4%) patients, in one patient after four procedures and in the second one after 14 procedures. Nausea and vomiting (grade 1) were reported after 16 procedures.

Two cases of grade 1 alopecia were observed. Local toxicity, mainly because of scrotum edema (grade 1), and pelvic pain (grade 1), was reported in two patients subjected to lymphadenectomy.

### Survival

The overall MST was 17 months (range: 10–28 months); the mean survival time was  $24 \pm 22.3$  months. The 1-year, 3-year, and 5-year survival rates were 66.7, 18.5, and 7.4%, respectively. Table 2 shows that disease stage, number and size of nodules, and percentage of *MGMT* methylation significantly affected survival, whereas sex, age, mitosis, melanin pigmentation, and *BRAF* V600E status did not.

The overall MST of six (22.2%) patients who interrupted treatments because of worsening of general conditions was 27.5 months (mean:  $30.2 \pm 13.6$  months). This was significantly longer ( $P=0.01$ ) than that of 14 (51.8%) patients who interrupted treatments because of progression (median: 12.0; mean:  $15.0 \pm 8.7$  months). No significant difference was found between patients who interrupted treatments because of worsening of general condition and the five patients (18.5%) who interrupted treatments for retired consent (median: 18.0; mean:  $15.6 \pm 6.1$  months).

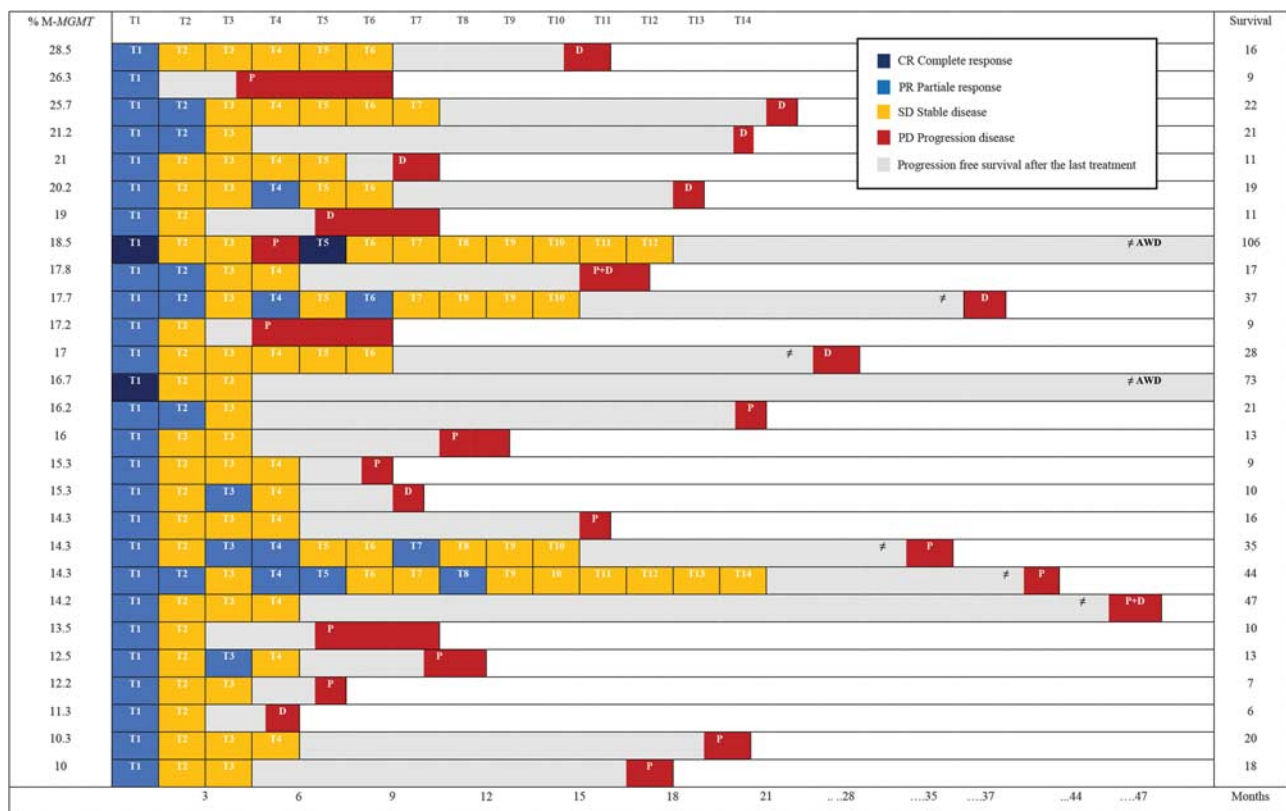
### Follow-up

No patients were lost at follow-up and all deaths were tumor related in our patients. The median follow-up duration was 17 months (range: 10–28 months), with a mean of  $24.0 \pm 22.3$ ; 25 of 27 (92.6%) patients died because of melanoma and two of 27 (7.4%) patients are alive without evidence of disease after 73 and 106 months. Among the 25 patients who died, progression in the pelvis was registered in 16 stage IIIC patients (two of them also had a distant relapse) and in one stage IIIB patient, whereas seven stage IIIC and one stage IIIB patients experienced distant tumor progression (Fig. 2). The patient who was alive without disease after 106 months showed a pelvic progression after the fourth treatment, followed by a complete response after a new treatment.

### MGMT promoter methylation and BRAF status

*MGMT* promoter methylation was present in all tumor samples [27/27 (100.0%)], with a median percentage methylation of 17.0% (Fig. 2). To confirm that *MGMT* promoter methylation was not induced by previous alkylating agents or chemotherapy, a statistical correlation by the Mann–Whitney test was performed ( $P=0.41$ ). Figure 4a shows the *MGMT* promoter methylation percentage estimated for each sample according to the survival times. A statistical association between methylation of the *MGMT* promoter and increase in survival times of melanoma patients treated with melphalan regional chemotherapy (Log-Rank: 5.46,  $P=0.01$ , hazard ratio=0.32) was detected. A cut-off value of 14% was

Fig. 2



Responses and survival after 131 procedures in 27 patients. Each T column shows a separate treatment; each row corresponds to the outcomes of each patient following the treatments. AWD, alive without disease; D, distant site of progression; % M-MGMT, percentage of MGMT promoter methylation; P, pelvic site of progression; T, treatment.

found that can significantly differentiate different survival groups of patients (Fig. 4b).

The mutational analysis of the *BRAF* gene identified the V600E mutation in 16 of 27 (59.3%) metastases. No association was detected between *BRAF* V600E status and *MGMT* promoter methylation ( $P=0.37$ ).

**Discussion**

This study showed that melphalan hypoxic perfusion is a safe and effective therapy for stage III melanoma patients with pelvic locoregional metastases who fail current systemic therapies. Survival was significantly influenced by stage, burden, and *MGMT* methylation. In particular, it has been found that high levels of *MGMT* promoter methylation in melanoma metastases were associated with longer overall survival. Moreover, in our cases, we identified a significant *MGMT* methylation cut-off of at least 14% useful to differentiate the patients who will experience prolonged survival.

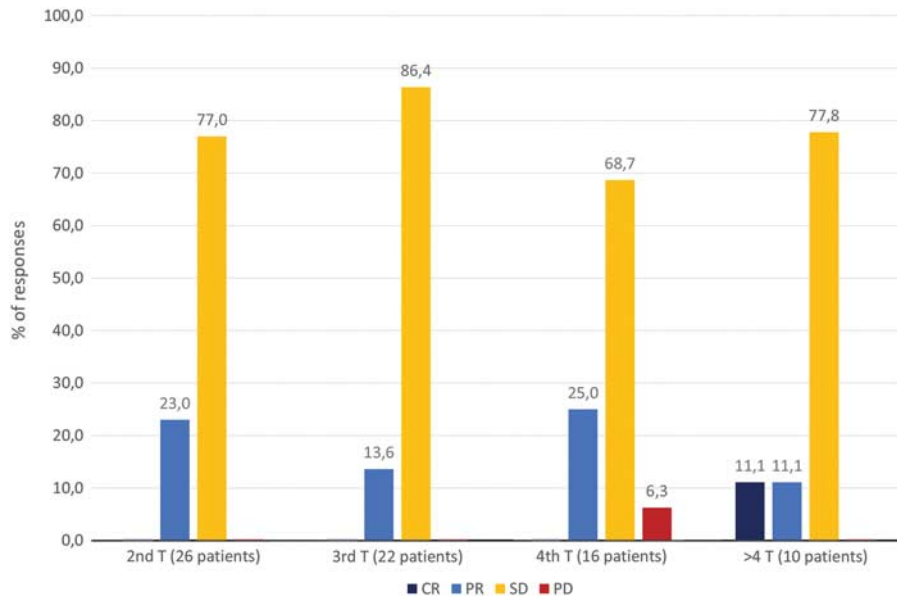
Methylation of DNA is the main type of epigenetic modifications in humans able to modulate or silencing gene expression [22]. In particular, methylation of

normally unmethylated sites, known as cytidine phosphate guanosine islands at the promoter region of genes, is correlated with reduced levels of gene transcription. Tumors with a methylated *MGMT* promoter and exon 1 have transcriptional silencing of *MGMT* [10]. Conflicting reports on *MGMT* protein expression and in-vitro melphalan sensitivity have been published [23,24,25].

In melanoma patients, no correlation between *MGMT* methylation and outcomes after temozolamide systemic chemotherapy has been found in a large study by Hassel *et al.* [26]. Similarly, the study by Beasley *et al.* [27] showed that the response to temozolamide-isolated limb infusion for metastatic patients was not related to *MGMT* promoter methylation status. In contrast, Tuominen *et al.* [28] observed a significant association of *MGMT* promoter methylation with the response rate and progression-free survival after temozolamide systemic chemotherapy.

To date, our work is the first study showing a positive association between the *MGMT* promoter methylation and a prolonged survival following melphalan locoregional treatment in stage III melanoma patients. This finding was probably a result of the exclusion of stage IV

Fig. 3



Percentages of responses in the treatments (T) following the first. CR, complete response; PD, progression disease; PR, partial response; SD, stable disease.

**Table 2** Survival according to age, sex, stage, *BRAF*V600E status, burden, mitosis, cellular melanin pigmentation, number of treatments, and *MGMT* methylation

Variables	Patients (n)	Median survival time (months)	Log-rank $\chi^2$	P value	Cox HR
Age					
< 65	11	18			
≥ 65	16	16.5	0.32	0.57 (NS)	
Sex					
Female	20	18			
Male	7	11	1.11	0.29 (NS)	
Stages					
IIIB	4	55			
IIIC	23	16	5.28	0.02	4.88 (1.09–21.70)*
<i>BRAF</i> status					
Wild type	11	19			
V600E mutated type	16	14.5	0.21	0.64 (NS)	
Burden					
Low	15	21			
High	12	16	6.27	0.01	2.98 (1.20–7.43)*
Mitosis					
< 1	11	18			
≥ 1	20	12	1.11	0.29 (NS)	
Melanin cellular pigmentation					
Yes	12	19.5			
No	15	13	0.66	0.41 (NS)	
Number of treatments					
≤ 2	1	9			
> 2	26	17.5	3.63	0.07 (NS)	
<i>MGMT</i> methylation (%)					
< 14	6	11.5			
≥ 14	21	19	5.46	0.01	0.32 (0.12–0.89)*

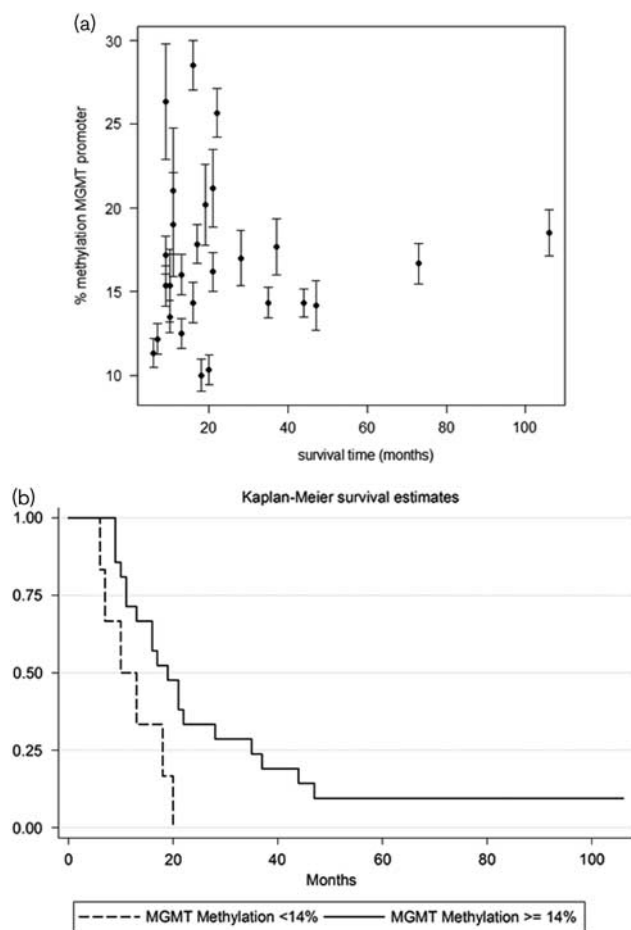
HR, hazard ratio.

\* $P < 0.05$ .

patients and the high homogeneity of perfusion procedures. Interestingly, in our samples, we estimated an *MGMT* promoter methylation cut-off of at least 14%, which was significantly associated with a longer survival after melphalan regional chemotherapy. This cut-off

value could be useful to dichotomize metastatic melanoma patients into two prognostic groups. Similar results were reported for glioblastoma [29]. However, we observed that in seven patients with *MGMT* promoter methylation higher than 18.5%, the median survival was

Fig. 4



(a) *MGMT* promoter methylation percentage estimated for each sample in relation to the survival times. Each estimation ( $\pm$  SE) originated from the six probes' peak values. (b) Cut-off value of 14% significantly differentiating different survival groups of patients.

16 months, which is lower than the overall MST of 17 months. This could be related to the following: (i) all patients were high burden; (ii) these patients could have other additional very effective repair mechanisms in response to melphalan-induced DNA damage, such as nucleotide excision repair and homologous recombination [12]. Further studies on higher number of samples should be carried out to validate this result.

The main limitation of our study was the small sample size, which could not have provided an adequate statistical power in some subgroup analyses; however, this small sample size was obtained on the basis of rigorous selection criteria that provided high homogeneity both of patients and of melphalan locoregional procedures. Moreover, the assessment of *MGMT* promoter methylation was performed using only the MS-MLPA method. Despite the advantages of this method, such as the absence of a bisulfite conversion reaction [29], other

molecular methods could be useful to confirm *MGMT* methylation findings. Finally, no statistical correlation was found between *MGMT* status and response. In relation to the regional impact of the treatment, one expects a more relevant influence of *MGMT* status on response than on survival. Given the small sample size, the high number of treatments per patient, and the heterogeneity of burden, the statistical power was rather low.

The determination of *MGMT* methylation status may be an important factor in determining which melanoma patients should receive melphalan regional chemotherapy, but its prognostic significance in the routine clinical setting should be established in a larger multicenter prospective controlled study.

## Acknowledgements

### Conflicts of interest

There are no conflicts of interest.

## References

- Merlino G, Herlyn M, Fisher DE, Bastian BC, Flaherty KT, Davies MA, *et al.* The state of melanoma: challenges and opportunities. *Pigment Cell Melanoma Res* 2016; **29**:404–416.
- Kroon BBR, Kroon HM, Noorda EM, Vrouenraets BC, Klaase JM, van Slooten GW, *et al.* Isolated limb perfusion for melanoma. In: Aigner KR, Stephens FO, editors. *Induction chemotherapy*, 2th ed. Berlin: Springer; 2016. pp. 355–373.
- Huisman AM, Kroon HM, Kam PCA, Thompson JF. Isolated limb infusion. In: Aigner KR, Stephens FO, editors. *Induction chemotherapy*, 2th ed. Berlin: Springer; 2016. pp. 375–390.
- Stehlin JS, Clark RL, White EC, Smith JL Jr, Griffin AC, Jesse RH Jr, *et al.* Regional chemotherapy for cancer: experiences with 116 perfusions. *Ann Surg* 1960; **151**:605–619.
- Ryan RF, Schramel RJ, Creech O Jr. Value of perfusion in pelvic surgery. *Dis Colon Rectum* 1963; **6**:297–300.
- Thompson JF, Vaughn RC, Saw RPM, Kam PCA. Isolated limb infusion with melphalan for recurrent melanoma: a simple alternative to isolated limb perfusion. *Reg Cancer Treat* 1994; **7**:188–192.
- Wanebo HJ, Chung MA, Levy AI, Turk PS, Vezeridis MP, Belliveau JF. Preoperative therapy for advanced pelvic malignancy by isolated pelvic perfusion with the balloon-occlusion technique. *Ann Surg Oncol* 1996; **3**:295–303.
- Guadagni S, Russo F, Rossi CR, Pilati PL, Miotto D, Fiorentini G, *et al.* Deliberate hypoxic pelvic and limb chemoperfusion in the treatment of recurrent melanoma. *Am J Surg* 2002; **183**:28–36.
- Bonvalot S, de Baere T, Mendiboure J, Paci A, Farace F, Drouard-Troalen L, *et al.* Hyperthermic pelvic perfusion with tumor necrosis factor- $\alpha$  for locally advanced cancers: encouraging results of a phase II study. *Ann Surg* 2012; **255**:281–286.
- Esteller M, Garcia-Foncillas J, Andion E, Goodman SN, Hidalgo OF, Vanaclocha V, *et al.* Inactivation of the DNA-repair gene *MGMT* and the clinical response of gliomas to alkylating agents. *New Engl J Med* 2000; **343**:1350–1354.
- Arai H, Yamauchi T, Uzui K, Ueda T. Leukemia cells are sensitized to temozolomide, carmustine and melphalan by the inhibition of O6-methylguanine DNA methyltransferase. *Oncol Lett* 2015; **10**:845–849.
- Kuo CY, Chou WC, Wu CC, Wong TS, Kakadiya R, Lee TC, *et al.* Repairing of N-mustard derivative BO-1055 induced DNA damage requires NER, HR, and *MGMT*-dependent DNA repair mechanisms. *Oncotarget* 2015; **6**:25770–25783.
- Fan CH, Liu WL, Cao H, Wen C, Chen L, Jiang G. O6-methylguanine DNA methyltransferase as a promising target for the treatment of temozolomide-resistant gliomas. *Cell Death Dis* 2013; **4**:e876.
- Fahrer J, Kaina B. O6-methylguanine-DNA methyltransferase in the defense against N-nitroso compounds and colorectal cancer. *Carcinogenesis* 2013; **34**:2435–2442.
- Balch CM, Gershenwald JE, Song SJ, Thompson JF, Atkins MB, Byrd DR, *et al.* Final version of 2009 AJCC melanoma staging and classification. *J Clin Oncol* 2009; **27**:6199–6206.



- 16 Steinman J, Ariyan C, Rafferty B, Brady MS. Factors associated with response, survival, and limb salvage in patients undergoing isolated limb infusion. *J Surg Oncol* 2014; **109**:405–409.
- 17 Guadagni S, Santinami M, Patuzzo R, Pilati PL, Miotto D, Deraco M, *et al.* Hypoxic pelvic and limb perfusion with melphalan and mitomycin C for recurrent limb melanoma: a pilot study. *Melanoma Res* 2003; **13**:51–58.
- 18 Thompson JF, Liu M, Waugh RC, Watson LD, Sheldon DM, Stephen MS, *et al.* A percutaneous aortic 'stop-flow' infusion technique for regional cytotoxic therapy of the abdomen and pelvis. *Reg Cancer Treat* 1994; **7**:202–207.
- 19 Ricci S, Rossi G, Roversi R, Cavallo G, Romanelli M, Roversi M, *et al.* Antiblastic locoregional perfusion with control of the aorto-caval flow: technique of percutaneous access. *Radiol Med* 1997; **93**:246–252.
- 20 Eisenhauer EA, Therasse P, Bogaerts J, Schwartz LH, Sargent D, Ford R, *et al.* New response valuation criteria in solid tumors: revised RECIST guideline (version 1.1). *Eur J Cancer* 2009; **45**:228–247.
- 21 Didelot A, Le Corre D, Luscan A, Cazes A, Pallier K, Emile JF, *et al.* Competitive allele specific TaqMan PCR for KRAS, BRAF and EGFR mutation detection in clinical formalin fixed paraffin embedded samples. *Exp Mol Pathol* 2012; **92**:275–280.
- 22 Episkopou H, Kyrtopoulos SA, Sfrikakis PP, Dimopoulos MA, Souliotis VL. The repair of melphalan-induced DNA adducts in the transcribed strand of active genes is subject to a strong polarity effect. *Mutat Res* 2011; **714**:78–87.
- 23 Preuss I, Thust R, Kaina B. Protective effect of O6-methylguanine-DNA methyltransferase (MGMT) on the cytotoxic and recombinogenic activity of different antineoplastic drugs. *Int J Cancer* 1996; **65**:506–512.
- 24 Passagne I, Evrard A, Depeille P, Cuq P, Cupissol D, Vian L. O(6)-methylguanine DNA-methyltransferase (MGMT) overexpression in melanoma cells induces resistance to nitrosoureas and temozolomide but sensitizes to mitomycin C. *Toxicol Appl Pharmacol* 2006; **211**:97–105.
- 25 Yoshimoto Y, Augustine CK, Yoo JS, Zipfel PA, Selim MA, Pruitt SK, *et al.* Defining regional infusion treatment strategies for extremity melanoma: comparative analysis of melphalan and temozolomide as regional chemotherapeutic agents. *Mol Cancer Ther* 2007; **6**:1492–1500.
- 26 Hassel JC, Sucker A, Edler L, Kurzen H, Moll I, Stresemann C, *et al.* MGMT gene promoter methylation correlates with tolerance of temozolomide treatment in melanoma but not with clinical outcome. *Br J Cancer* 2010; **103**:820–826.
- 27 Beasley GM, Speicher P, Augustine CK, Dolber PC, Peterson BL, Sharma K, *et al.* A multicenter phase I dose escalation trial to evaluate safety and tolerability of intra-arterial temozolomide for patients with advanced extremity melanoma using normothermic isolated limb infusion. *Ann Surg Oncol* 2015; **22**:287–294.
- 28 Tuominen R, Jewell R, van den Oord JJ, Wolter P, Stierner V, Lindholm C, *et al.* MGMT promoter methylation is associated with temozolomide response and prolonged progression-free survival in disseminated cutaneous melanoma. *Int J Cancer* 2015; **136**:2844–2853.
- 29 Park CK, Kim JW, Yim SY, Lee AR, Han JH, Kim CY, *et al.* Usefulness of MS-MLPA for detection of MGMT promoter methylation in the evaluation of pseudoprogression in glioblastoma patient. *Neuro Oncol* 2011; **13**:195–202.