

Corrections

MICROBIOLOGY. For the article “Kaposi’s sarcoma-associated herpesvirus encodes two proteins that block cell surface display of MHC class I chains by enhancing their endocytosis” by Laurent Coscoy and Don Ganem, which appeared in number 14, July 5, 2000, of *Proc. Natl. Acad. Sci. USA* (97, 8051–8056; First Published June 20, 2000; 10.1073/pnas.140129797), the authors note that in Fig. 3A, images of the identical gel were inadvertently

reproduced twice, once in the control row and once in the experimental row. The error occurred during figure preparation and reflects the fact that in both the control and the experimental cell lines, MHC-I chains are processed identically, generating images that are very similar. The corrected Fig. 3A and its legend are printed below. No conclusions of the paper are affected.

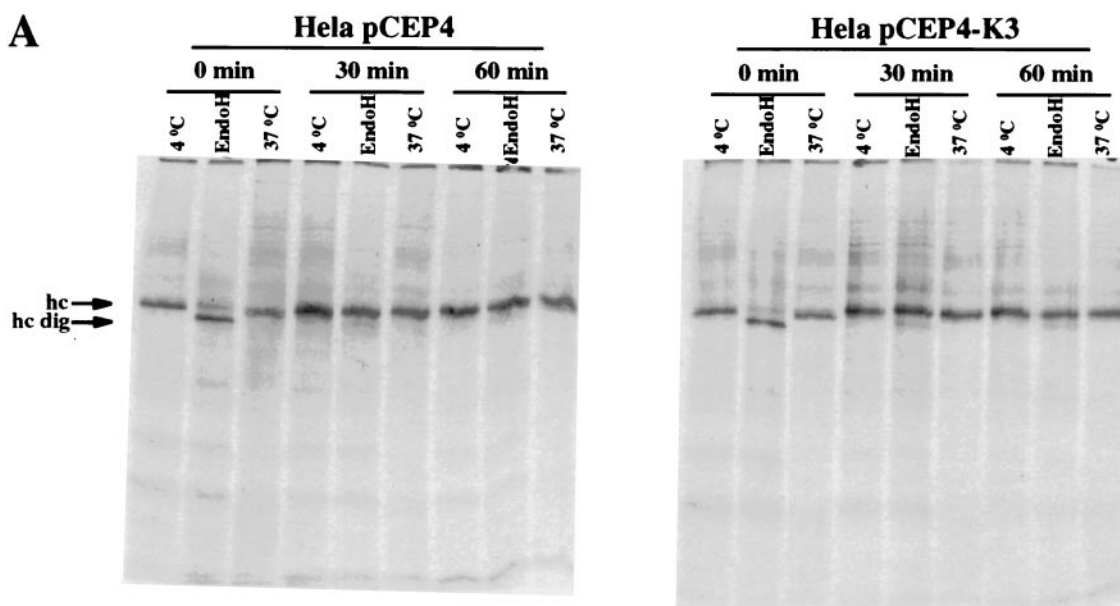


Fig. 3. Intracellular transport and stability of MHC I molecules. (A) HeLa cells stably transfected with pCEP4-K3 (Right) or the pCEP4 vector alone (Left) were metabolically labeled for 20 min and chased for the indicated time periods. After being lysed in 1% Nonidet P-40, lysates were divided into three aliquots. Two were kept on ice and one was incubated at 37°C for 1 h. Heterodimeric MHC I molecules were immunoprecipitated with mAb W6/32 and treated with endo H where indicated.

MEDICAL SCIENCES. For the article “Human lung cancer and *p53*: The interplay between mutagenesis and selection” by Sergei N. Rodin and Andrew S. Rodin, which appeared in number 22, October 24, 2000, of *Proc. Natl. Acad. Sci. USA* (97, 12244–12249; First Published October 17, 2000; 10.1073/pnas.180320897), the authors note the following correction. Fig. 2 shows erroneous spectra that do not correspond to the test result (0.979 *P* value as described in the text) because the lung cancer spectrum in smokers was constructed when erroneous repeats were not removed from the IARC *p53* mutational database (April 1999). Also, some mutations were assigned to the wrong cancer type classes because of a spreadsheet macro programming error during the building of the chart. Fig. 2 is repeated here with the correct spectra. These corrections do not change the results or the conclusions reported in the paper.

Correction published online before print: *Proc. Natl. Acad. Sci. USA*, 10.1073/pnas.041592998. Text and publication date are at www.pnas.org/cgi/doi/10.1073/pnas.041592998

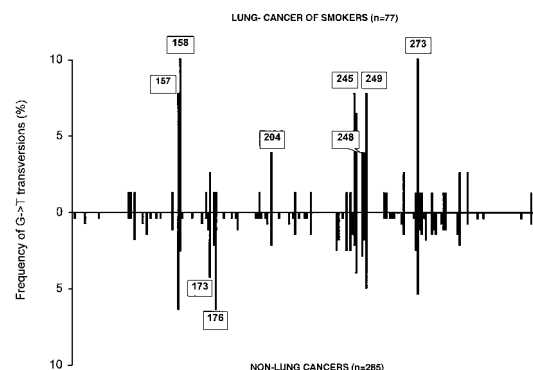


Fig. 2. Comparison of the *p53* spectra of G→T transversions from lung cancer (cases related to radon and other occupational exposures excluded) of ever smokers and cancers in non-lung tissues least accessible to smoke (see Table 1). The size of the bars represents the G→T frequency at the corresponding guanine. Hot- and “warm”-spot codons are indicated.