

Open

## Mutation of *WIF1*: a potential novel cause of a Nail-Patella-like disorder

Marilyn C. Jones, MD<sup>1</sup>, Sarah E. Topol, RN<sup>2</sup>, Manuel Rueda, PhD<sup>2</sup>, Glenn Oliveira, BS<sup>2</sup>, Tierney Phillips, BA<sup>2</sup>, Emily G. Spencer, PhD<sup>2</sup> and Ali Torkamani, PhD<sup>2,3</sup>

**Purpose:** Nail-Patella syndrome is a dominantly inherited genetic disorder characterized by abnormalities of the nails, knees, elbows, and pelvis. Nail abnormalities are the most constant feature of Nail-Patella syndrome. Pathogenic mutations in a single gene, *LMX1B*, a mesenchymal determinant of dorsal-ventral patterning, explain approximately 95% of Nail-Patella syndrome cases. However, 5% of cases remain unexplained.

**Methods:** Here, we present exome sequencing and analysis of four generations of a family with a dominantly inherited Nail-Patella-like disorder (nail dysplasia with some features of Nail-Patella syndrome) who tested negative for *LMX1B* mutation.

**Results:** We identify a loss-of-function mutation in *WIF1* (NM\_007191 p.W15\*), which is involved in mesoderm segmentation, as the suspected cause of the Nail-Patella-like disorder observed in this family.

**Conclusions:** Mutation of *WIF1* is a potential novel cause of a Nail-Patella-like disorder. Testing of additional patients negative for *LMX1B* mutation is needed to confirm this finding and further clarify the phenotype.

*Genet Med* advance online publication 6 April 2017

**Key Words:** Fong disease; HOOD syndrome; nail dysplasia; Nail-Patella syndrome; Turner-Kieser syndrome

Nail-Patella syndrome is an autosomal dominant multisystem disorder primarily affecting skeletal and connective tissues. Primary features of the syndrome include dysplasia of the nails, knees, and elbows. Nails are typically hypoplastic, absent, or dystrophic. Patellae are often small or irregularly shaped. Elbow abnormalities include dysplasia of the radial head and hypoplasia of the lateral epicondyle and capitellum. Joints may swell, dislocate, display hypermobility, or display early degenerative arthritis. Iliac horns are observed radiologically in approximately 70% of cases. Other features include renal dysfunction and, less frequently, glaucoma. Renal dysfunction is observed in approximately 40% of cases, with end-stage renal diseases occurring in approximately 5% of cases. Glaucoma is observed more frequently and at a younger age in this population. The overall presentation can vary widely from one affected individual to another, with various manifestations ranging from severe to totally absent on a case-by-case basis. Nail changes are the most constant feature of Nail-Patella syndrome and are observed in approximately 98% of cases. The incidence of Nail-Patella syndrome is thought to be 1 in 50,000.<sup>1,2</sup>

Loss-of-function mutations in *LMX1B* are the only known genetic cause of Nail-Patella syndrome. *LMX1B* is a WNT signaling-responsive transcription factor crucial for mesenchymal dorsoventral patterning in developing limbs.<sup>3</sup> WNT signaling plays a major role in a wide variety of embryonic development processes, and it is thought that the timing and restricted

expression of *LMX1B*, as well as other cooperating and compensating signaling pathways, underlie both the constraints on abnormalities typically observed in Nail-Patella syndrome and the heterogeneity of clinical presentation observed from patient to patient.<sup>4</sup> *LMX1B* mutations account for 95% of all Nail-Patella syndrome cases,<sup>2</sup> leaving some cases unexplained even after comprehensive *LMX1B* mutation profiling.

Here, we present the exome sequencing findings for four generations of a family with nail dysplasia and some features of Nail-Patella syndrome. Prior to referral for exome sequencing, the proband of this family underwent workup for Nail-Patella syndrome; however, her pelvic radiograph results were negative for iliac horns, her patellas were not small, and test results were negative for *LMX1B* mutation. Although many of the classic findings for Nail-Patella syndrome were not observed, given the similarity of the nail dysplasia observed in this family to that observed in Nail-Patella syndrome and the co-occurrence of joint laxity, the case was referred for exome sequencing for a suspected Nail-Patella-like disorder or other connective-tissue disorder. Exome sequencing, bioinformatic analysis, and application of standard inheritance-based, population-based, and coding impact filters resulted in the conclusion that a loss-of-function mutation in *WIF1*, a WNT signaling regulator involved in mesoderm segmentation,<sup>5</sup> was the suspected novel cause of the Nail-Patella-like disorder observed in this family.

<sup>1</sup>Department of Pediatrics, University of California, San Diego, and Rady Children's Hospital, San Diego, California, USA; <sup>2</sup>The Scripps Translational Science Institute, La Jolla, California, USA; <sup>3</sup>Department of Integrative Structural and Computational Biology, The Scripps Research Institute, La Jolla, California, USA. Correspondence: Ali Torkamani (atorkama@scripps.edu)

Submitted 12 October 2016; accepted 25 January 2017; advance online publication 6 April 2017. doi:10.1038/gim.2017.20

## MATERIALS AND METHODS

## Study consent

Study participants provided written informed consent and the protocol was approved by the institutional review board of Scripps.

## Whole-exome sequencing, variant calling, and filtration

DNA was extracted from freshly drawn blood and whole-exome sequencing (WES) was pursued utilizing Agilent SureSelect exome hybridization followed by barcoding and sequencing of paired 100-bp reads on an Illumina HiSeq2500 instrument. Read mapping, variant calling, and quality filtration were performed using a BWA-GATK best-practices variant quality score recalibration approach. Mean coverage of 86× per individual was achieved with 98.1% of the target exome covered by >10 reads. Variant annotation was performed using the SG-ADVISE system.<sup>4</sup> A series of filters was applied to derive a set of candidate disease-causative variants (Table 2): (i) population-based filtration, because of the rarity of this condition, removed variants present at >0.2% allele frequency in the Exome Aggregation Consortium,<sup>6</sup> 1000 Genomes,<sup>7</sup> the NHLBI Exome Sequencing Project,<sup>8</sup> or Scripps Wellderly populations;<sup>9</sup> (ii) functional impact-based filtration to remove variants that are not nonsynonymous, frameshift, in-frame, nonsense, or do not affect canonical splice-site donor/acceptor sites; and (iii) inheritance-based filters to remove variants that do not segregate in the family in a manner consistent with autosomal dominant inheritance.

## RESULTS

## Phenotype

The proband was a 45-year-old woman presenting with dysplastic ridged nails, and joint laxity. She had a history of multiple fractures with minimal trauma; a torn anterior cruciate ligament; subluxations of the left shoulder, knee, and temporomandibular joints; spondylolisthesis; and arthritis. Prior to referral

for exome sequencing, she was evaluated for Nail-Patella syndrome with radiographs of the knees and pelvis, which documented patellas of normal size and no iliac horns. Genetic testing for pathogenic deletions, duplications, and mutations in *LMX1B* was negative (Fulgent Diagnostics).

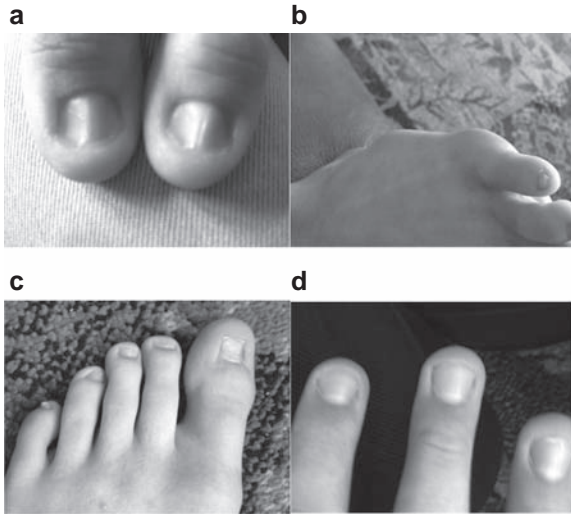
Nail dysplasia and joint laxity co-occur in a variety of disorders, all of which are associated with additional severe findings. A search for disorders with combined nail dysplasia (human phenotype ontology identifier HP:0002164) and joint laxity (HP:0001388) via the Phenomizer tool<sup>10</sup> returned possible diagnoses that were severe syndromic disorders (Meier-Gorlin syndrome, Costello syndrome, chromosome 2q32-q33 deletion syndrome, Weaver syndrome, Coffin-Lowry syndrome, craniofrontonasal syndrome, and focal dermal hypoplasia), severe bone development disorders (metaphyseal chondrodysplasia and cranioectodermal dysplasia), or Nail-Patella syndrome. Therefore, although many of the classic findings for Nail-Patella syndrome were not observed, we concluded that the phenotype observed in the proband was nail dysplasia with some features of Nail-Patella syndrome, or what we refer to as a Nail-Patella-like disorder.

Family history included four generations of 14 total individuals with nail dysplasia and a variety of connective-tissue concerns (Table 1, Figure 1, Supplementary Figures S2 and S3 online). All affected family members belonged to the maternal lineage of the proband, including the mother, grandmother, and maternal aunts, uncles, cousins, brother, and niece of the proband (see pedigree in Figure 2); there were two instances of male-to-male transmission supporting autosomal dominant inheritance in the maternal lineage. To identify candidate genetic variants underlying the Nail-Patella-like disorder observed in four generations of this family, WES was pursued for five individuals in the family, the mother-father-proband trio and two cousins (the most distantly related family members available for sequencing). Follow-up genotyping of candidate variants was performed in these individuals plus an additional five members of the family.

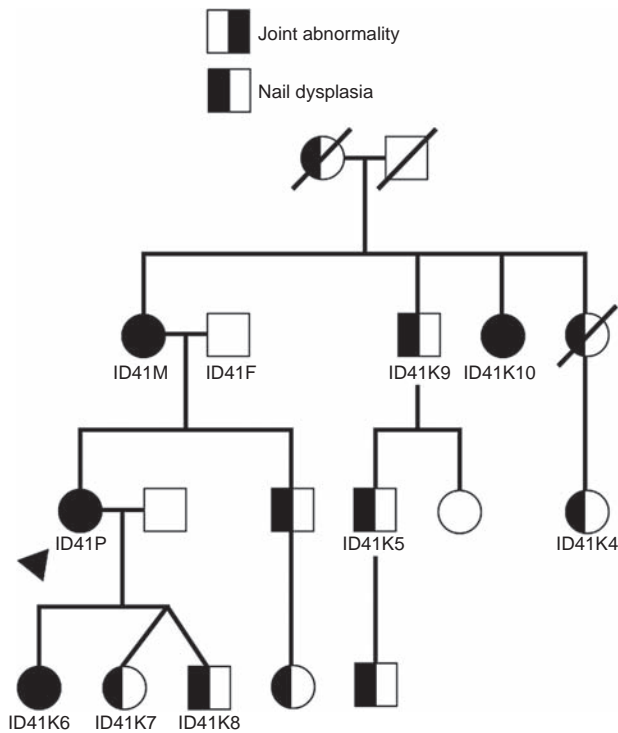
Table 1 Phenotype description

Subject	Age	Nail dysplasia	Iliac horns	Joint problems	Renal disease	Glaucoma	Other
ID41P (proband)	45	Present	Absent	Lax joints, multiple subluxation, torn ACL, multiple fractures, arthritis			Irritable bowel syndrome
ID41M (mother)	73	Present	Unknown	Patellar tendon rupture, 3 knee replacements, scoliosis	Chronic kidney disease	Present	Breast cancer, chronic cough
ID41K4 (cousin)	48	Present	Unknown				
ID41K5 (cousin)	NA	Present	Unknown				Crohn's disease
ID41K6 (daughter)	15	Present	Absent	Hip dysplasia, torn ulnar collateral ligament, chronic back pain			
ID41K7 (daughter)	13	Present	Unknown	Recurrent ankle sprain, microinstability at fibular fracture			
ID41K8 (son)	13	Present	Unknown	Torn ankle tendon			Cranial nerve palsy
ID41K9 (uncle)	NA	Present	Unknown				Chronic cough
ID41K10 (aunt)	NA	Present	Unknown	Multiple joint symptoms, hip replacement			Chronic cough
Grandmother	78	Present	Unknown	Arthritis	Renal failure	Present	

All familial relations are maternal in respect to the proband.



**Figure 1 Images of the proband and children's nail dysplasia.** (a) Both thumbs of the proband (ID41P). (b) Fifth toenail of the proband's daughter (ID41K7). (c,d) Toenails and fingernails of the proband's son (ID41K8). Note the variable ridging, dysplasia, and thin texture.



**Figure 2 Family pedigree.** Pedigree of four generations of a family with a dominantly inherited Nail-Patella-like disorder. The proband is indicated by the arrow. Identifiers are provided for family members that underwent genetic analysis. Corresponding identifiers can be found in the Tables. Not all unaffected family members are depicted. Unaffected family members not pictured include three unaffected children of the pictured brother of the proband, four unaffected children of ID41K10, and an unaffected brother of ID41K4.

**Sequencing and candidate variant identification**

WES (~86x coverage, 98.1% of target exome covered by 10+ reads) was performed for the affected proband (ID41P),

unaffected father (ID41F), affected mother (ID41M), and two affected maternal cousins (ID41K4 and ID41K5) (see Materials and Methods for details) (Figure 1b). Variants discovered by WES were annotated by SG-ADVISER.<sup>4</sup> Nonsynonymous, in-frame, frameshift, nonsense, and consensus splice site variants, at a threshold population allele frequency of <0.2%, were filtered under an autosomal dominant model of inheritance. This allele frequency threshold is 100-fold higher than the incidence of Nail-Patella syndrome (1 in 50,000). Twelve candidate causative variants were retained after filtration (Table 2).

Follow-up genotyping, via Sanger sequencing, for the 12 candidate variants was performed in the above mentioned individuals plus three affected children (ID41K6, ID41K7, ID41K8), an affected maternal uncle (ID41K9), and an affected maternal aunt (ID41K10) of the proband (Figure 1b). This process ultimately resulted in the retention of three candidate variants: *KRT74* p.R379L, *RDH16* p.R153G, and *WIF1* p.W15\* (shown in boldface in Table 2).

**DISCUSSION**

Relaxed allele frequency-based filtration of coding variants inherited in an autosomal dominant fashion in the study family resulted in three candidate genes for the observed Nail-Patella-like disorder: *KRT74*, *RDH16*, and *WIF1*. It should be noted that the underlying assumption leading to the identification of these three candidate variants was that the disorder is driven by a coding mutation captured by exome sequencing, and that the Nail-Patella-like disorder observed in this family is rare. No assumptions regarding the specific phenotype were included in this variant prioritization approach—i.e., variants underlying other known causes of nail dysplasia or other connective-tissue disorders would have been captured by our analysis approach. Given our initial assumptions, further filtration of the candidate variants by allele frequency under the assumption of complete penetrance, and prioritization based on biological relevance of the candidate genes, resulted in the conclusion that mutation of *WIF1* was the suspected cause of Nail-Patella-like disorder in this family.

The candidate variant in *KRT74* can probably be removed from consideration on the basis of phenotype as well as allele frequency. *KRT74* is an epithelial keratin known to cause autosomal dominant woolly hair and autosomal recessive ectodermal dysplasia.<sup>11</sup> The family in this report had normal hair, teeth, skin, and sweat glands. Moreover, this particular variant in *KRT74* (rs143748352) has been observed at 0.047% allele frequency in Europeans,<sup>6</sup> which is an approximately 25-fold excess of the incidence of Nail-Patella syndrome. Therefore, under the assumption of near-complete penetrance, which was appropriate given the pattern of inheritance observed in this family, the variant in *KRT74* was unlikely to be a cause of the observed Nail-Patella-like disorder. However, we could not fully exclude the possibility that the variant contributed to a portion of the phenotype observed in this family.

The candidate variant in *RDH16* cannot definitively be eliminated from consideration due to allele frequency, but its known

**Table 2** Inheritance of candidate variants

Gene	Coordinates (hg19)	Protein impact	Allele frequency	ID41P	ID41M	ID41F	ID41K4	ID41K5	ID41K6	ID41K7	ID41K8	ID41K9	ID41K10
<i>DYNC2L1</i>	chr2:44023025 snp G>A	c.*360-1G>A	0.19%	01	01	00	01	01	00	01	00	01	01
<i>FOXP2</i>	chr2:48602076 snp C>T	p.L264F	<0.001%	01	01	00	01	01	00	01	00	01	01
<i>FAT4</i>	chr4:126370186 snp A>T	p.D2672V	0.20%	01	01	00	01	01	00	00	01	01	01
<b><i>RDH16</i></b>	<b>chr12:57348805 snp T&gt;C</b>	<b>p.R153G</b>	<b>0.006%</b>	<b>01</b>	<b>01</b>	<b>00</b>	<b>01</b>	<b>01</b>	<b>01</b>	<b>01</b>	<b>01</b>	<b>01</b>	<b>01</b>
<b><i>KRT74</i></b>	<b>chr12:52962172 snp C&gt;A</b>	<b>p.R379L</b>	<b>0.047%</b>	<b>01</b>	<b>01</b>	<b>00</b>	<b>01</b>	<b>01</b>	<b>01</b>	<b>01</b>	<b>01</b>	<b>01</b>	<b>01</b>
<b><i>WIF1</i></b>	<b>chr12:65514927 snp C&gt;T</b>	<b>p.W15X</b>	<b>&lt;0.001%</b>	<b>01</b>	<b>01</b>	<b>00</b>	<b>01</b>	<b>01</b>	<b>01</b>	<b>01</b>	<b>01</b>	<b>01</b>	<b>01</b>
<i>DACT1</i>	chr14:59113231 snp G>T	p.K630N	0.31%	01	01	00	01	01	01	01	00	00	01
<i>EIF2AK4</i>	chr15:40268999 ins->GACGAC	p.D736_D737dup	0.005%	01	01	00	01	01	01	01	01	01	00
<i>PAK6</i>	chr15:40558610 snp C>G	p.R258G	0.054%	01	01	00	01	01	01	01	00	01	00
<i>VPS18</i>	chr15:41191521 snp A>G	p.I169V	0.08%	01	01	00	01	01	01	01	00	01	00
<i>ATP6V0A1</i>	chr17:40652829 snp C>T	p.T602M	0.058%	01	01	00	01	01	00	00	00	01	01
<i>SLC4A1</i>	chr17:42331864 snp G>A	p.T686M	0.014%	01	01	00	01	01	00	00	00	01	01

Genotypes: 0, reference allele; 1, alternate allele. Variants observed in all affected family members are in show in boldface.

function does not appear to fit the observed phenotype. The variant in *RDH16* (rs372580365) has been observed at 0.006% allele frequency in Europeans,<sup>6</sup> which is slightly (3×) greater than the incidence of Nail-Patella syndrome—an excess that would be amplified further given that 95% of cases are already explained by mutation in *LMX1B* mutation (60× greater). Moreover, *RDH16* is a liver-specific retinol dehydrogenase that plays no known role in connective-tissue biology. Finally, *RDH16* knockout mice have no significant abnormalities.<sup>12</sup>

However, the variant in *WIF1* is a strong candidate as the cause of a novel Nail-Patella-like disorder. The nonsense variant (*WIF1* p.W15\*) observed in this gene has not previously been observed in more than 100,000 genomes.<sup>6</sup> Therefore, the frequency of this variant is consistent with a fully penetrant cause of the observed disorder. Moreover, *WIF1* is a secreted antagonist of WNT signaling, expressed predominantly at the superficial layer of epiphyseal and articular cartilage, and it is known to promote chondrogenesis.<sup>13</sup> In mouse models of arthritis, loss of *WIF1* aggravates cartilage damage.<sup>14</sup> The observed nonsense mutation in *WIF1* is expected to result in the complete loss of the N-terminal signal peptide of *WIF1* (amino acids 1–28) and thus inhibit its secretion into the extracellular matrix, where it inhibits WNT factors. Therefore, loss of *WIF1* function would be expected to lead to joint cartilage abnormalities. Moreover, *WIF1* functions within the same molecular signaling network as *LMX1B*—a WNT-responsive transcription factor.<sup>15</sup>

The WNT pathway controls a variety of embryonic development processes. The specificity of WNT signaling is achieved through a variety of WNT ligands, each of which is subject to highly organized temporal and spatially restricted patterns of expression to coordinate embryonic development.<sup>16</sup> A complex, and not fully understood, interplay between WNT and other signaling cascades is known to mediate joint development.<sup>17</sup> Similarly, WNT signaling is known to play a central role in nail development,<sup>18</sup> although the precise molecular mechanisms have not been well described. It is thought that the role of *LMX1B* as both a necessary and sufficient mediator of WNT signaling to specify dorsal limb patterning, specifically through induction by the WNT ligand WNT7A, underlies the primary abnormalities observed in Nail-Patella syndrome.<sup>15</sup> However, *LMX1B* is also involved in a variety of other complex WNT-dependent processes, in which *LMX1B* function may be compensated for by other factors, potentially leading to the phenotypic heterogeneity observed across Nail-Patella syndrome cases.<sup>19</sup> Similarly, *WIF1* interacts with a variety of WNT ligands, including WNT7A, and thus participates in an overlapping set of WNT signaling functions as *LMX1B*.<sup>20</sup> However, the details of the role of *WIF1* in embryonic and other developmental processes have not been well described.

Further study of additional *WIF1*-positive cases would help elucidate the role of *WIF1* mutation in Nail-Patella-like disorder and the role of WNT signaling in nail and joint development. The phenotype in this family evolves over time. The majority of affected individuals have abnormal nails at birth but do not manifest other features until they become competitively active



during adolescence. Multiple joint dislocations and arthritis are most troublesome. Two older members of the family have developed renal issues and one has glaucoma. It is unclear whether these features are related to the *WIF1* mutation or are unrelated. Longitudinal follow-up of family members is clearly warranted. The complete phenotypic spectrum due to loss of *WIF1* function may be clarified if more families are reported.

### SUPPLEMENTARY MATERIAL

Supplementary material is linked to the online version of the paper at <http://www.nature.com/gim>

### ACKNOWLEDGMENTS

This work was supported by Scripps Genomic Medicine, an NIH-NCATS Clinical and Translational Science Award (CTSA; 5 UL1 RR025774) to STSI, as well as funding from the Shaffer Family Foundation and the Anne and Henry Zarrow Foundation. Further support was received from the Lavin Family Foundation (NIH-U01 HG006476 and U54GM114833 to A.T.). We thank the following members of our review panel for their dedication and support: Kelly Bethel, Joel Diamant, Nelson Hywnn, James Mason, Evan Muse, Brad Patay, Paul Pockros, Ron Simon, and Gary Williams.

### DISCLOSURE

The authors declare no conflict of interest.

### REFERENCES

- Sweeney E, Hoover-Fong JE, McIntosh I. Nail-Patella syndrome. In: Pagon RA, Adam MP, Ardinger HH, et al. (eds). *GeneReviews*. University of Washington: Seattle, WA, 13 November 2014.
- Sweeney E, Fryer A, Mountford R, Green A, McIntosh I. Nail patella syndrome: a review of the phenotype aided by developmental biology. *J Med Genet* 2003;40:153–162.
- Chen H, Lun Y, Ovchinnikov D, et al. Limb and kidney defects in *Lmx1b* mutant mice suggest an involvement of *LMX1B* in human nail patella syndrome. *Nat Genet* 1998;19:51–55.
- Pham PH, Shipman WJ, Erikson GA, Schork NJ, Torkamani A. Scripps genome ADVISER: annotation and distributed variant interpretation SERver. *PLoS One* 2015;10:e0116815.
- Hsieh JC, Kodjabachian L, Rebbert ML, et al. A new secreted protein that binds to Wnt proteins and inhibits their activities. *Nature* 1999;398:431–436.
- Lek M, Karczewski KJ, Minikel EV, et al.; Exome Aggregation Consortium. Analysis of protein-coding genetic variation in 60,706 humans. *Nature* 2016;536:285–291.
- Auton A, Brooks LD, Durbin RM, et al.; 1000 Genomes Project Consortium. A global reference for human genetic variation. *Nature* 2015;526:68–74.
- Tennessen JA, Bigham AW, O'Connor TD, et al.; Broad GO; Seattle GO; NHLBI Exome Sequencing Project. Evolution and functional impact of rare coding variation from deep sequencing of human exomes. *Science* 2012;337:64–69.
- Erikson GA, Bodian DL, Rueda M, et al. Whole-Genome Sequencing of a Healthy Aging Cohort. *Cell* 2016;165:1002–1011.
- Köhler S, Schulz MH, Krawitz P, et al. Clinical diagnostics in human genetics with semantic similarity searches in ontologies. *Am J Hum Genet* 2009;85:457–464.
- Raykova D, Klar J, Azhar A, et al. Autosomal recessive transmission of a rare *KRT74* variant causes hair and nail ectodermal dysplasia: allelism with dominant woolly hair/hypotrichosis. *PLoS One* 2014;9:e93607.
- van der Weyden L, White JK, Adams DJ, Logan DW. The mouse genetics toolkit: revealing function and mechanism. *Genome Biol* 2011;12:224.
- Surmann-Schmitt C, Widmann N, Dietz U, et al. *Wif-1* is expressed at cartilage-mesenchyme interfaces and impedes *Wnt3a*-mediated inhibition of chondrogenesis. *J Cell Sci* 2009;122(Pt 20):3627–3637.
- Stock M, Böhm C, Scholtyssek C, et al. Wnt inhibitory factor 1 deficiency uncouples cartilage and bone destruction in tumor necrosis factor  $\alpha$ -mediated experimental arthritis. *Arthritis Rheum* 2013;65:2310–2322.
- Chen H, Johnson RL. Interactions between dorsal-ventral patterning genes *lmx1b*, *engrailed-1* and *wnt-7a* in the vertebrate limb. *Int J Dev Biol* 2002;46:937–941.
- MacDonald BT, Tamai K, He X. Wnt/ $\beta$ -catenin signaling: components, mechanisms, and diseases. *Dev Cell* 2009;17:9–26.
- Lories RJ, Corr M, Lane NE. To Wnt or not to Wnt: the bone and joint health dilemma. *Nat Rev Rheumatol* 2013;9:328–339.
- Naz G, Pasternack SM, Perrin C, et al. *FZD6* encoding the Wnt receptor frizzled 6 is mutated in autosomal-recessive nail dysplasia. *Br J Dermatol* 2012;166:1088–1094.
- Harita Y, Kitanaka S, Isojima T, Ashida A, Hattori M. Spectrum of *LMX1B* mutations: from nail-patella syndrome to isolated nephropathy. *Pediatr Nephrol*; e-pub ahead of print 23 July 2016.
- Bányai L, Kerekes K, Patthy L. Characterization of a Wnt-binding site of the WIF-domain of Wnt inhibitory factor-1. *FEBS Lett* 2012;586:3122–3126.



This work is licensed under a Creative Commons Attribution-NonCommercial-NoDerivs 4.0 International License. The images or other third party material in this article are included in the article's Creative Commons license, unless indicated otherwise in the credit line; if the material is not included under the Creative Commons license, users will need to obtain permission from the license holder to reproduce the material. To view a copy of this license, visit <http://creativecommons.org/licenses/by-nc-nd/4.0/>

© The Author(s) (2017)