

ORIGINAL ARTICLE

Assessment of the protein interaction between coagulation factor XII and corn trypsin inhibitor by molecular docking and biochemical validation

B. K. HAMAD, M. PATHAK, R. MANNA, P. M. FISCHER, J. EMSLEY and L. V. DEKKER 

School of Pharmacy, Centre for Biomolecular Sciences, University of Nottingham, Nottingham, UK

To cite this article: Hamad BK, Pathak M, Manna R, Fischer PM, Emsley J, Dekker LV. Assessment of the protein interaction between coagulation factor XII and corn trypsin inhibitor by molecular docking and biochemical validation. *J Thromb Haemost* 2017; **15**: 1818–28.

Essentials

- Corn Trypsin Inhibitor (CTI) is a selective inhibitor of coagulation Factor XII (FXII).
- Molecular modelling of the CTI-FXIIa complex suggested a canonical inhibitor binding mode.
- Mutagenesis revealed the CTI inhibitory loop and helices $\alpha 1$ and $\alpha 2$ mediate the interaction.
- This confirms that CTI inhibits FXII in canonical fashion and validates the molecular model.

Summary. *Background:* Corn trypsin inhibitor (CTI) has selectivity for the serine proteases coagulation factor XII and trypsin. CTI is in widespread use as a reagent that specifically inhibits the intrinsic pathway of blood coagulation but not the extrinsic pathway. *Objectives:* To investigate the molecular basis of FXII inhibition by CTI. *Methods:* We performed molecular docking of CTI, using its known crystal structure, with a model of the activated FXII (FXIIa) protease domain. The interaction model was verified by use of a panel of recombinant CTI variants tested for their ability to inhibit FXIIa enzymatic activity in a substrate cleavage assay. *Results:* The docking predicted that: (i) the CTI central inhibitory loop P1 Arg34 side chain forms a salt bridge with the FXIIa S1 pocket Asp189 side chain; (ii) Trp22 from CTI helix $\alpha 1$ interacts with the FXIIa S3 pocket; and (iii) Arg43 from CTI helix $\alpha 2$ forms a salt bridge with FXIIa H1 pocket Asp60A. CTI amino acid substitution R34A negated all inhibitory activity, whereas the G32W, L35A, W22A and

R42A/R43A substitutions reduced activity by large degrees of 108-fold, 41-fold, 158-fold, and 100-fold, respectively; the R27A, W37A, W39A and R42A substitutions had no effect. Synthetic peptides spanning CTI residues 20–44 had inhibitory activity that was three-fold to 4000-fold less than that of full-length CTI. *Conclusions:* The data confirm the validity of a canonical model of the FXIIa–CTI interaction, with helix $\alpha 1$ (Trp22), central inhibitory loop (Arg34) and helix $\alpha 2$ (Arg43) of CTI being required for effective binding by contacting the S1, S3 and H1 pockets of FXIIa, respectively.

Keywords: corn trypsin inhibitor; factor XII; molecular docking simulation; serine protease; trypsin.

Introduction

Factor XII is a coagulation factor that circulates in plasma as an inactive zymogen [1]. Cleavage of the Arg353–Val354 peptide bond generates the activated form FXIIa, which has a heavy chain of 50 kDa, connected to a light chain of 28 kDa by a Cys340–Cys467 disulfide bridge. The closest homolog of FXII is hepatocyte growth factor activator (HGFA), which has a very similar domain organization including a C-terminal serine protease domain; a proline-rich region is unique to FXII [2–4]. FXIIa cleaves prekallikrein to generate kallikrein, which contributes to bradykinin generation [5]. FXIIa also cleaves FXI to generate activated FXI (FXIa), which contributes to plasma coagulation [6]. FXII knockout mice are protected against thrombosis and ischemic stroke in models of the disease, and it has been proposed that targeting FXII could result in medicines with a safer anticoagulation profile than the currently available anticoagulants; this has generated interest in developing selective inhibitors of FXIIa [7,8].

Corn trypsin inhibitor (CTI) or corn Hageman factor inhibitor is a bifunctional serine protease and α -amylase inhibitor [9–14]. It was first isolated from corn in the 1970s, and shown to have inhibitory activity against

Correspondence: Lodewijk V. Dekker, School of Pharmacy, Centre for Biomolecular Sciences, University of Nottingham, Nottingham NG7 2RD, UK

Tel.: +44 11 5846 6327

E-mail: lodewijk.dekker@nottingham.ac.uk

Received: 13 May 2016

Manuscript handled by: R. Camire

Final decision: P. H. Reitsma, 26 June 2017

trypsin [12,15–19]. Subsequently, CTI was shown to potentially inhibit FXIIa and moderately inhibit FXIa with selectivity over activated FX (FXa), thrombin, and kallikrein [10,11,14,16,17,20]. CTI is widely used to block the intrinsic pathway in *ex vivo* plasma studies of contact activation [17,21]. CTI could have utility as a coating agent to prevent contact activation in catheters [22].

The crystal structure of CTI reveals a central loop spanning residues 31–38 with an arginine at position 34 [23]. As this loop resembles a protease substrate site, it is proposed to act as an inhibition loop [23,24]. CTI also inhibits α -amylase [25], through a site independent from the central inhibition loop predicted to interact with serine proteases [10,11], and has antifungal activity [26,27].

The preference of CTI for FXIIa and trypsin is different from what has been determined for other inhibitors such as ecotin [28], which inhibits FXIIa, FXIa, trypsin, and thrombin. There are no known co-crystal structures for CTI with trypsin or FXIIa to explain this. A non-canonical binding mode has recently been proposed [29], implying that the inhibition loop of CTI is projected away from the active site in FXIIa. To understand CTI binding to and inhibition of FXIIa further, we used existing crystal structures for CTI and the FXII protease to generate a model for the complex, which we verified by mutagenesis of CTI, establishing a canonical model for CTI inhibition of FXIIa.

Materials and methods

Materials

Full length activated FXIIa (α -FXIIa) and commercial CTI were obtained from Enzyme Research Laboratories (Swansea, UK). S2302 (a chromogenic substrate peptide mimic) was obtained from Chromogenix (Epsom, UK). A codon-optimized CTI cDNA was obtained from GenScript (Piscataway, NJ, USA). High-purity-grade (> 95%) synthetic peptides were obtained from GenScript. Purity was confirmed by reverse-phase HPLC and mass spectrometry. DNA primers were obtained from Eurofins MWG (Ebersberg, Germany).

Docking of CTI and the FXII protease domain

The docking study was based on the available crystal structures of CTI [23,24] (Protein Data Bank [PDB]: 1BFA and 1BEA) and on the crystal structure of the FXII protease in a zymogen-like state that we previously described and termed FXIIac (PDB: 4XE4) and FXIIc (PDB: 4XDE). To generate a structure for the activated conformation of the FXIIa protease, a hybrid model of FXIIa was created with a similar approach to that used by previous authors [30]. Step 1 used the crystal structure of closest homolog HGFA (PDB: 1YC0) as a template in the program SWISS-MODEL [31,32] to generate

coordinates required for the active FXIIa S1 pocket (including residues 16–26, 133–147, 179–189, and 190–224; residue numbers according to the chymotrypsin numbering). In step 2, these coordinates were combined with the coordinates of the crystal structure of FXIIac (PDB: 4XE4) to generate the remainder of the FXIIa protease (Fig. S1). Unlike previous authors [30], who used the FXIIc coordinates (PDB: 4XDE), we utilized FXIIac (PDB: 4XE4), in which the closed H1 pocket is likely to be the dominant conformation [3]. This model was regularized in coor, and superposed onto typical activated protease crystal structures of thrombin, trypsin, FXa and FXIa to check the positions of key conserved amino acids such as Asp189 in the S1 pocket and Trp215 in the S3 pocket, and to confirm that the N-terminal Ile16 is correctly described. This was validated by inspection of a 4-Å crystal structure of the activated β -FXIIa protease (R. Manna and J. Emsley, unpublished data).

Docking was performed with this FXIIa hybrid model (referred to as the FXIIa protease) and CTI crystal structures (PDB: 1BFA and 1BEA, representing *Escherichia coli*-expressed and native CTI protein crystal structures at resolutions of 2.2 Å and 1.95 Å, respectively), by use of the program CLUSPRO with default parameters [33–35]. To test the robustness of the docking algorithm, CTI docking calculations were performed with the related proteases trypsin, HGFA, thrombin, FXa, FXIa, activated FIX (FIXa), and activated FVII (FVIIa) [36]. The top 10 docked complexes were inspected with PYMOL. When the pose was observed to be canonical (i.e. having the P1 CTI amino acid Arg34 docked into the protease S1 pocket), the relevant ranking position was recorded in Table S1. The FXIIa–CTI complex was analysed with PISA [37], and hydrogen bonding and salt bridge interactions are shown in Table S2.

Cloning and site-directed mutagenesis

CTI cDNA was cloned into the pCOLD I-GST vector [38]. The resulting construct encoded a recombinant fusion protein composed of a His₆ tag, an FXa site, a glutathione-S-transferase (GST) tag, an HRV3C protease site, and CTI (recombinant CTI [rec-CTI]). A forward and reverse primer pair for each of the mutations was designed with the www.agilent.com/genomics/qcpd tool, and the mutagenesis was carried out with the Agilent Technologies (Stockport, UK) site-directed mutagenesis kit. The mutagenesis was confirmed by restriction analysis and DNA sequencing.

Expression, purification, and characterization

The relevant CTI construct was transfected into expression strain Origami 2 (DE3) and grown under antibiotic selection at 37 °C until an OD of 0.9 was

reached. The culture was then induced with 500 μM isopropylthiogalactoside, and incubated for 16 h at 10 °C. Bacterial pellets were collected and lysed by sonication in 100 mM sodium phosphate buffer (pH 7.4), 300 mM NaCl, and 10% glycerol. Purification was performed with Ni^{2+} -nitrilotriacetic acid agarose column affinity chromatography. Beads were washed in binding buffer (20 mM sodium phosphate buffer [pH 7.4], 500 mM NaCl, and 20 mM imidazole), and eluted with binding buffer containing 500 mM imidazole. The protein concentration was quantified [39] and verified by equal loading on an SDS-PAGE gel. Where indicated, protein was purified further by gel filtration chromatography in 50 mM Tris-Cl and 150 mM NaCl (pH 7.4) on a HiLoad 16/600 Superdex 200 preparative grade column with a fast protein liquid chromatography system (GE Healthcare, Little Chalfont, UK).

Recombinant CTI and CTI(R34A) (0.15 mg mL⁻¹ in 50 mM Tris-Cl, 50 mM NaCl, pH 7.4) were analyzed against buffer by circular dichroism (CD) spectroscopy from 190 nm to 260 nm in a Chirascan-plus spectrometer (Applied Photophysics, Leatherhead, UK) at 20 °C. Secondary structure was then predicted with CIRCULAR DICHOISM ANALYSIS USING NEURAL NETWORKS software [40].

α -FXIIa enzymatic assay

The enzymatic activity of α -FXIIa was measured by monitoring the amount of pNA chromophore released from substrate H-D-Pro-Phe-Arg-pNA (S-2302). Assays were performed in a 100- μL volume at 33 °C in 96-well plates in a Perkin Elmer (Seer Green, UK) Envision plate reader, and pNA release was followed over a period of 6 h by reading the absorbance at 405 nm. Absorbance values were converted to pNA concentrations by comparison with a standard curve obtained under exactly the same instrument conditions. All absorbance values were within the linear measurement range of the instrument. Initial rates were calculated on the basis of the first 30 min of incubation. To assess the K_M , concentrations of substrate peptide between 0.1 mM and 0.6 mM were incubated with 10 nM α -FXIIa, enzymatic activity was measured as described above, and data were analyzed by non-linear regression with the Michaelis–Menten algorithm (GRAPHPAD PRISM, version 6.04). To assess the inhibitory mechanism of CTI, 30 nM CTI was incubated with these same concentrations of substrate peptide, the reaction was initiated by the addition of 10 nM α -FXIIa, enzymatic activity was measured as described above, and data were analyzed by non-linear regression with the Michaelis–Menten algorithm (GRAPHPAD PRISM, version 6.04) and by linear regression after Lineweaver–Burk transformation. To assay inhibitors, concentrations of CTI variant proteins between 10⁻⁸ M and 10⁻⁵ M or concentrations of peptides between 10⁻⁶ M and 10⁻³ M were

incubated with 200 μM substrate peptide, the reaction was initiated by addition of 10 nM α -FXIIa, enzymatic activity was measured as described above, and IC₅₀ values were determined by non-linear regression analysis (GRAPHPAD PRISM, version 6.04) using the log[inhibitor] versus response – variable slope algorithm with a bottom constraint.

Results

Docking of CTI and FXIIa

Previous studies on CTI cleavage by trypsin identified a scissile bond in CTI between Arg34 and Leu35 [24]. This, together with sequence similarities between the CTI region of Arg34 and the activation loop of FXI, the natural FXIIa substrate (Fig. 1A) [41], indicates that CTI is likely to be a canonical inhibitor of FXIIa that interacts with the protease in a similar way to the substrate. Kinetic analysis of the inhibition of α -FXIIa by CTI showed a competitive inhibitory mechanism, in line with this notion (Fig. S3). Kinetic parameters were close to those reported historically for this enzyme (Fig. S3) [14,42]. Figure 1B shows an early crystal structure of a canonical interaction between the peptidic inhibitor PPACK and thrombin [43]; however, a non-canonical model of FXIIa inhibition by CTI has recently been proposed [29]. To investigate this, we first produced a homology model of the FXIIa protease, and then performed molecular docking in CLUSPRO, employing this homology model together with the established CTI crystal structures [23,24].

Inspection of the top-ranked docking solution identified a canonical complex whereby the CTI residue Arg34 was inserted into the S1 pocket of FXIIa for both CTI crystal structures, with scores of – 999.6 and – 1007.9 and without steric clashes (Fig. 1C shows 1BFA, which is illustrated in stereo in Fig. S2 and Movies S1 and S2). For comparison and to establish the stability of the CLUSPRO docking algorithm, we performed similar docking of CTI with the crystal structures of the protease domains from trypsin, HGFA, thrombin, FXa, FXIa, FIXa, FVIIa, and kallikrein. In each case, the top 10 lowest-energy solutions were inspected in PYMOL for canonical complexes in which the Arg34 occupies the S1 binding pocket. The ranked position observed is indicated in the c-rank column of Table S1. Dockings for trypsin and HGFA with the CTI structure 1BFA gave ranking scores of – 815.6 and – 941.5, respectively, for the canonical complex. As CTI is a known trypsin inhibitor, this result is consistent with previous observations. To our knowledge, inhibition of HGFA by CTI has not been assessed directly. For thrombin and FXIa, a canonical docking pose with CTI was also observed, but only for CTI structure 1BEA, and inspection of these docking solutions revealed steric clashes. This is consistent with previous reports that CTI

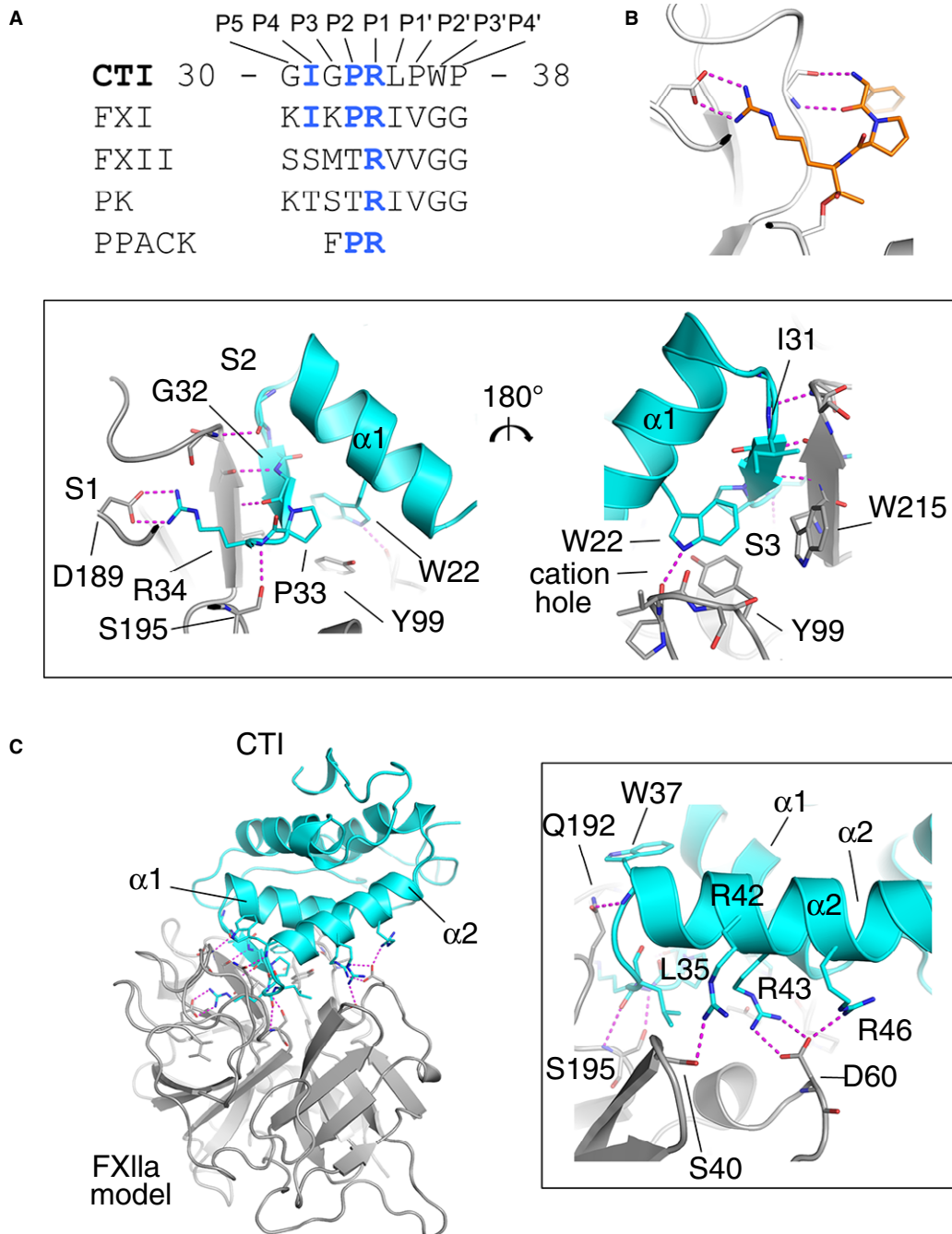


Fig. 1. Docking of the activated factor XII (FXIIa)–corn trypsin inhibitor (CTI) complex. (A) The canonical inhibitor sequence of CTI loop residues 30–38 is shown aligned to the sequences of the activation loops of FXI, prekallikrein, and FXII which are natural substrates for FXIIa cleavage, and the sequence of peptidomimetic thrombin inhibitor PPACK. (B) Cartoon diagram showing the canonical inhibitor PPACK binding into the S1 pocket of thrombin prepared by use of the crystal structure with Protein Data Bank code 1PPB with PYMOL. (C) Cartoon diagram of the docked FXIIa–CTI complex. FXIIa is in gray and CTI is in cyan. Key residues are shown as sticks, and interactions are indicated as purple dotted lines. The top boxed area is a zoom-in of the area of the FXIIa S1, S2 and S3 pockets (gray) and CTI (cyan), and the right-hand boxed area is the front of the S1 pocket and the FXIIa H1 pocket residue D60 shown interacting with CTI (residue number D60 corresponds to FXII Asp397 and Asp416 in sequence numbering without and with the signal peptide, respectively, or FXII Asp60A from chymotrypsin numbering). [Color figure can be viewed at wileyonlinelibrary.com]

weakly inhibits FXIa and does not inhibit thrombin [14,29]. Of all the proteases investigated, FXIIa was the only canonical top-ranked docking solution for both CTI

structures 1BFA and 1BEA, and the values of energy were more significant than with any of the other solutions in the study (Table S1).

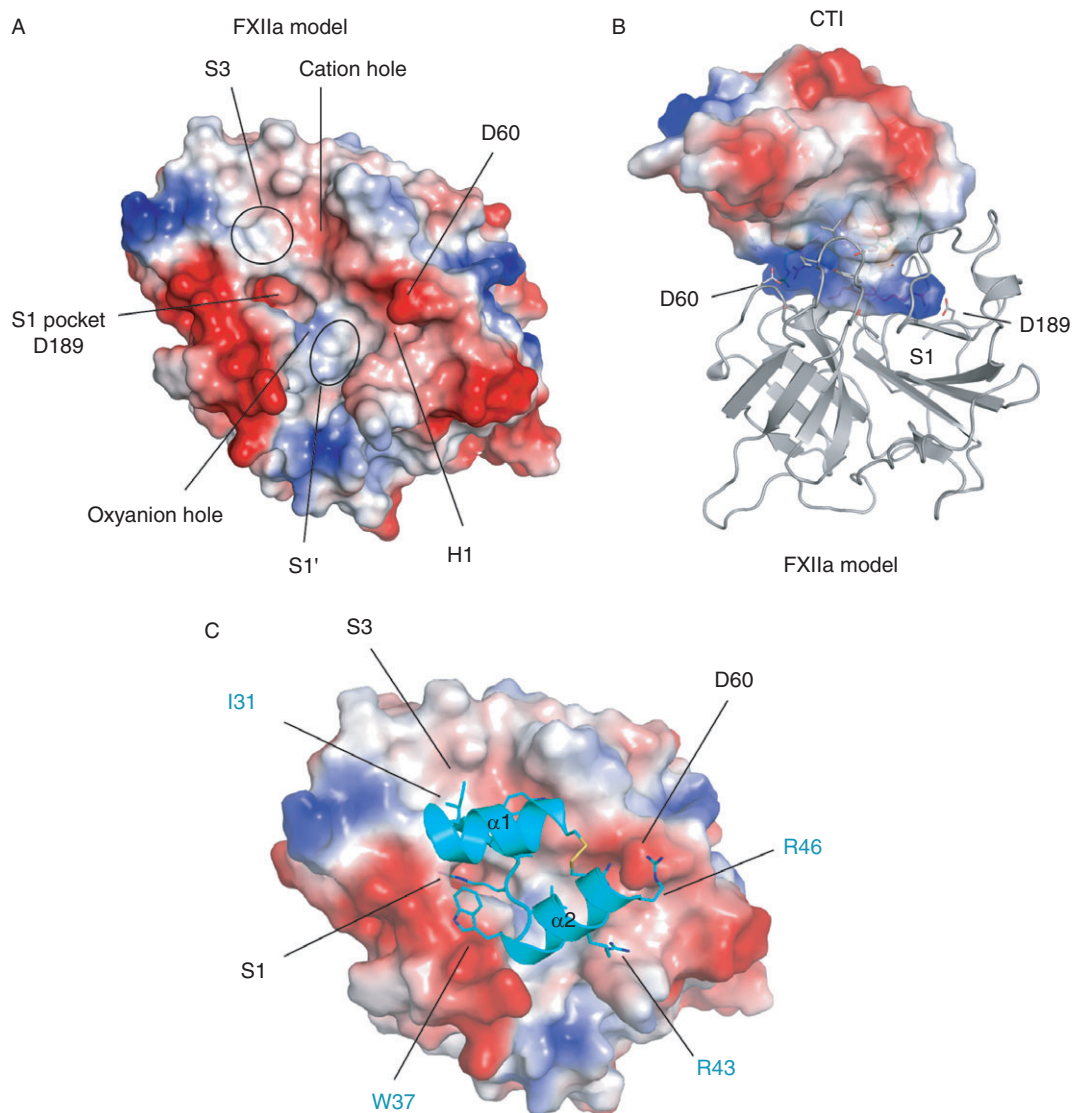


Fig. 2. Charge surface representations of the activated factor XII (FXIIa)–corn trypsin inhibitor (CTI) interaction (blue = positive, red = negative). (A) The FXIIa model is shown with the key surface pockets labeled. (B) Docked complex of FXIIa (shown as a cartoon in gray) and CTI shown as a transparent charged surface illustrating the basic region interacting with the negatively charged S1 (D189) and H1 (D60) residues shown as sticks. (C) FXIIa protease as viewed in (A) but with CTI residues 20–44 shown as a cartoon in cyan, with key residues labeled as sticks in cyan. [Color figure can be viewed at wileyonlinelibrary.com]

Structure of the FXIIa protease–CTI complex

Figures 1B and 2 show a cartoon diagram of the structure of the FXIIa–CTI docked complex, and Table S2 shows the electrostatic and hydrogen bonding interactions at this interface. The interactions involve salt bridges, hydrogen bonds and hydrophobic interactions burying a total surface area of 1102 Å² (PDBe-PISA). The Arg34 side chain extends into the S1 pocket of the FXIIa catalytic domain, forming a salt bridge with the S1 pocket residue Asp189 side chain carboxyl (chymotrypsin numbering used) (Figs. 1B and 2; Movie S1). A nitrogen atom from the Arg34 guanidinium group forms a hydrogen bond with the FXIIa Gly218 carbonyl. The main chain

carbonyl oxygen of Arg34 forms hydrogen bonds with the main chains of Gly193 and Ser195 in the FXIIa oxyanion hole. In addition, the side chain hydroxyl group of Ser195 from the catalytic triad contacts the Arg34 carbonyl. Additional interactions flanking the P1 Arg34 include Pro33 interacting with the S2 pocket, and the Leu35 side chain forming hydrophobic contacts with the FXIIa S1' pocket (Fig. 1B; Movie S1). The interactions of CTI residues Gly32 and Pro33 with the FXIIa S2 pocket are similar to interactions observed in other serine protease complex crystal structures with the chloromethylketone inhibitor PPACK [43] (which has the peptidomimetic sequence PheProArg) and protein inhibitors such as infestin-1 [44].

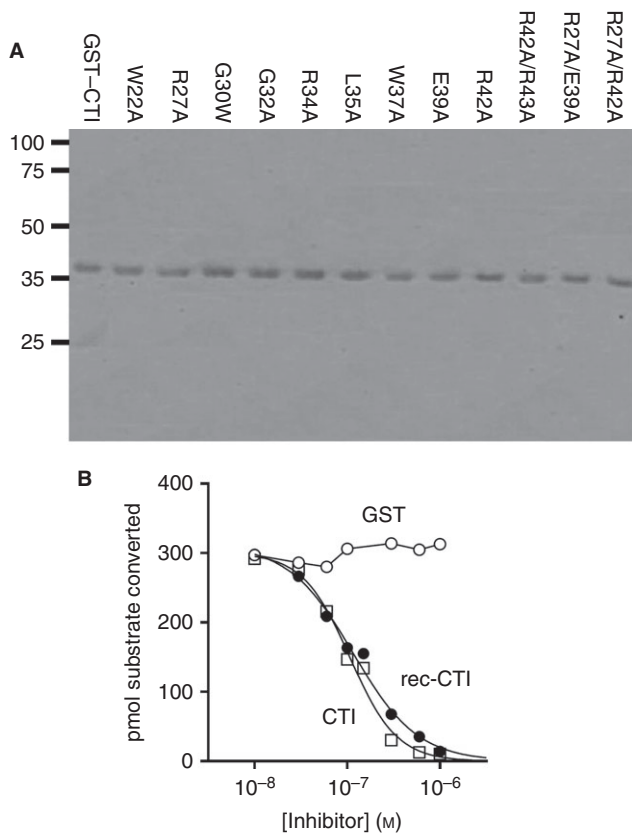


Fig. 3. Expression of recombinant corn trypsin inhibitor (CTI) mutants and activated factor XII (α -FXIIa) activity in the presence of recombinant CTI (rec-CTI), commercial CTI, and glutathione-*S*-transferase (GST). (A) Wild-type CTI or mutants were expressed as His-GST fusion proteins, as explained in Materials and methods. Purified proteins were quantified by the Lowry method, and 1 μ g of protein was analyzed by SDS-PAGE followed by Coomassie blue staining. (B) CTI samples (10^{-8} M to 10^{-5} M) were incubated with 200 μ M substrate peptide, and this was followed by addition of α -FXIIa; enzymatic activity was then monitored as described in Materials and methods. Data points were fitted to a curve by non-linear regression (GRAPHPAD PRISM 6.04; log[inhibitor] versus response – variable slope algorithm with a bottom constraint). Error bars indicate the standard error ($n = 3$ –5 independent observations).

Loss of α -FXIIa inhibition for CTI mutant R34A

To test the predictions of the model above, we produced rec-CTI and utilized mutagenesis to generate 12 variants with amino acid substitutions at the predicted FXIIa–CTI interface (Fig. 3A). rec-CTI and a commercial preparation of CTI inhibited α -FXIIa in identical ways, with pIC_{50} values of 6.94 ± 0.04 and 6.95 ± 0.05 , respectively (Fig. 3B; Table 1). GST, the main fusion partner of CTI in this construct, did not inhibit α -FXIIa. Substitution of Arg34 of CTI, at the P1 substrate site, with Ala (R34A) caused complete loss of inhibition of α -FXIIa, even at high protein concentrations (Figs. 4 and 5; Table 1). CD spectroscopy revealed no differences between wild-type and rec-CTI(R34A), with the expected 58% α -helix secondary structure being present in both (Fig. S4). Gel

Table 1 Inhibition of activated factor XII by corn trypsin inhibitor (CTI), and recombinant CTI variants. pIC_{50} values are given with the standard error (SE) of the fit ($n = 3$ –5 independent experiments). For reference, the corresponding IC_{50} is also given, as is the fold reduction in inhibitory activity of each mutant as compared with inhibition by recombinant CTI (rec-CTI)

Protein	$pIC_{50} \pm SE$	IC_{50} (M)	Fold
CTI	6.97 ± 0.04	1.1×10^{-7}	
rec-CTI	6.94 ± 0.05	1.2×10^{-7}	1
GST	NIA	NIA	–
W22A	4.72 ± 0.24	1.9×10^{-5}	158
R27A	6.78 ± 0.04	1.7×10^{-7}	1
G30W	6.32 ± 0.06	4.8×10^{-7}	4
G32W	4.89 ± 0.06	1.3×10^{-5}	108
R34A	NIA	NIA	–
L35A	5.31 ± 0.05	4.9×10^{-6}	41
W37A	6.97 ± 0.06	1.1×10^{-7}	1
E39A	6.85 ± 0.06	1.4×10^{-7}	1
R42A	6.72 ± 0.15	1.9×10^{-7}	2
R42A/R43A	4.98 ± 0.02	1.1×10^{-5}	100
R27A/E39A	6.58 ± 0.08	2.6×10^{-7}	2
R27A/R42A	6.80 ± 0.05	1.6×10^{-7}	1

GST, glutathione-*S*-transferase; NIA, no inhibitory activity was observed.

filtration of wild-type and rec-CTI(R34A) revealed that the majority of the proteins appeared as monomers, with a smaller proportion eluting at a size consistent with a dimeric form, most likely because of dimer formation at the GST moiety, with no protein aggregates being visible (Fig. S5). Like the original preparation, the gel-filtrated monomeric form of rec-CTI(R34A) was still not able to inhibit α -FXIIa protease activity, whereas wild-type rec-CTI inhibited α -FXIIa in a similar fashion as the non-gel-filtrated protein (Fig. S5). Thus, the lack of inhibitory activity of the R34A mutant was not attributable to loss of protein because of aggregation. This confirms that Arg34 plays a central role in the binding of CTI to FXIIa, and is consistent with the docking showing that Arg34 undergoes the greatest number of interactions with the FXIIa protease (Figs 1B and 2; Table S2) [23,24].

CTI substitutions W22A, G32W, L35A and R43A reduce its inhibitory activity

Alanine substitution of Trp22 in rec-CTI resulted in a 158-fold reduction in inhibitory activity, showing that it makes a significant contribution to FXIIa binding (Figs 4 and 5; Table 1). This further validates the docking model shown in Fig. 1B, whereby the CTI Trp22 aromatic side chain undergoes a π – π stacking interaction with the FXIIa Tyr99 side chain, and the Trp22 side chain nitrogen atom contacts the Pro96 carbonyl of the cation hole in the S3 pocket. The R42A/R43A double mutant had 100-fold lower activity than wild-type CTI. This appears to be mostly attributable to the R43A substitution, as the activity of the R42A mutant was comparable to that of the wild type. This is compatible with our model, which

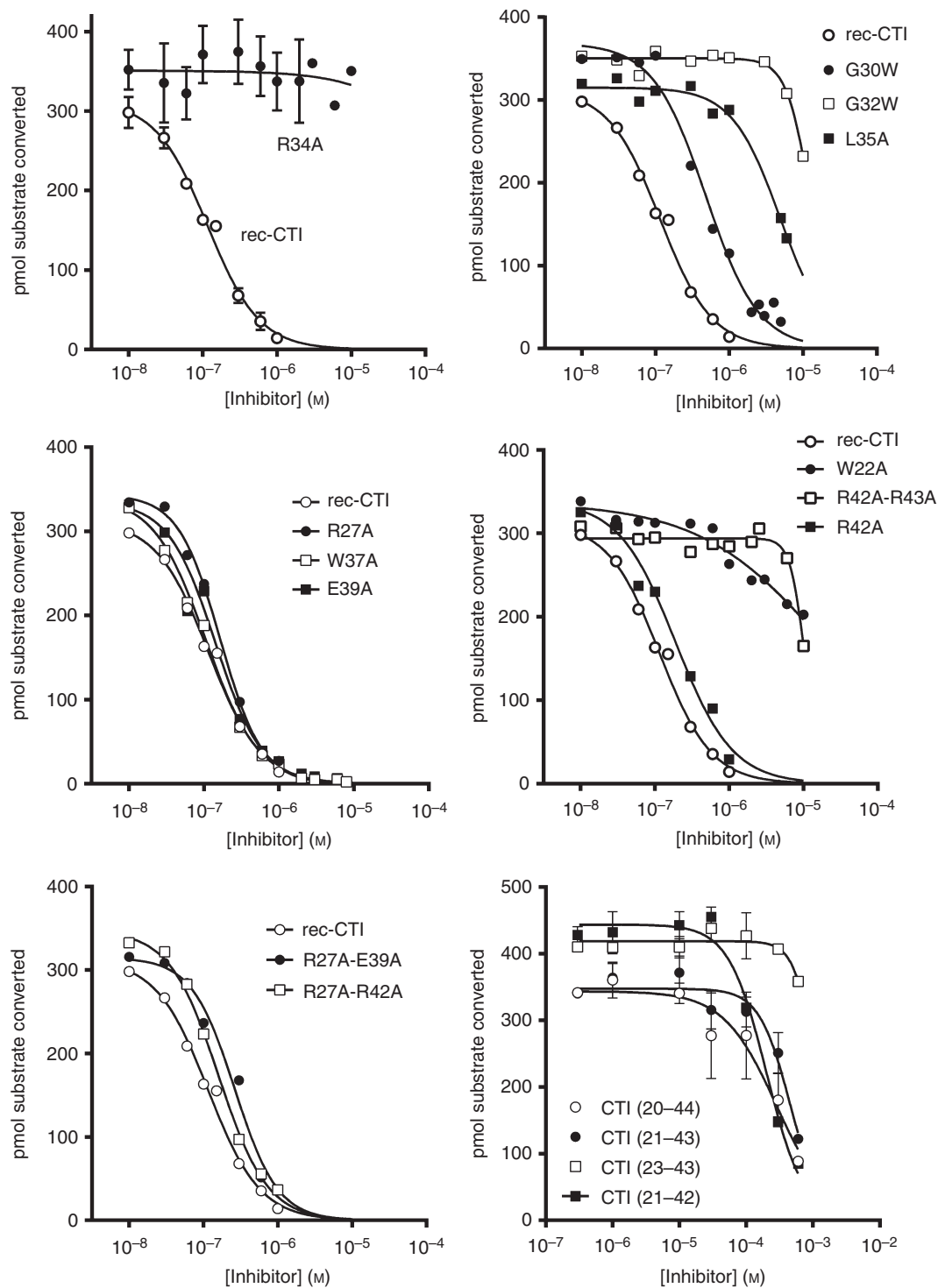


Fig. 4. Inhibition of activated factor XII (α -FXIIa) by recombinant corn trypsin inhibitor (rec-CTI) variants and peptides. Concentrations of rec-CTI variants (10^{-8} M to 10^{-5} M) or peptides (10^{-6} M to 10^{-3} M) were incubated with 200 μ M substrate peptide, and this was followed by addition of α -FXIIa; enzymatic activity was then monitored as described in Materials and methods. pIC_{50} values were obtained by non-linear regression (GRAPHPAD PRISM 6.04; log[inhibitor] versus response – variable slope algorithm with a bottom constraint). Error bars indicate the standard error ($n = 3$ –5 independent observations).

shows that Arg43 forms a salt bridge with FXIIa Asp60A, which would be lost in the R43A mutant (the Asp60A numbering is based on homology with chymotrypsin, with the letter A referring to the first residue

of a three-residue insertion present in FXII but not in chymotrypsin [45]; this residue number corresponds to FXII Asp397 without and Asp416 with the signal peptide, and is labeled as D60 in Figs 1 and 2).

α -FXIIa. A synthetic peptide spanning Cys20–Cys44 and similar peptides lacking N-terminal or C-terminal residues were between three and four orders of magnitude less potent than full-length rec-CTI (Fig. 4; Table 2). An eight-mer peptide spanning the loop between helices α 1 and α 2 (CTI residues 31–38) but containing Arg34 did not have any inhibitory activity (Fig. 4; Table 2). Thus, loss of inhibitory activity was observed when the CTI structure was truncated, with no activity being retained in a core sequence even though critical residues defined by mutagenesis were represented. Weak inhibitory activity of the isolated CTI peptides as compared with the whole protein indicates that the entire CTI protein is required for inhibition. The angle between two α -helices is likely to play an important role in the interaction with FXIIa.

Discussion

To investigate the unique protease inhibitory and selectivity properties of CTI, we describe a canonical docked complex of FXIIa and CTI. The model is consistent with the competitive mechanism by which CTI inhibits α -FXIIa. To test the veracity of the model in more detail, we expressed and purified recombinant variants of CTI, substituting key residues predicted to be important for formation of the interface with FXIIa. These confirm the essential role of the canonical P1 residue Arg34, and establish for the first time the importance of the more remote residues Trp22 and Arg43 in CTI α -helices 1 and 2. The docking solution is not consistent with a previously reported non-canonical docking solution [29], which places CTI at a different location on the surface of FXIIa. Differences in the methodology between the two studies are that, in the current study, a hybrid model of the FXIIa structure was used as opposed to a purely

HGFA-derived homology model [29]. It is likely that the accurate placement of FXIIa residue Asp60A in the hybrid FXIIa model plays a role in improving the docking as compared with the HGFA-derived homology model. However, the current canonical model is consistent with experimental observations that disruption of the cysteine loop structure of CTI affects its inhibition of FXII [29], whereby the function of the cysteine loops would primarily be to provide the three-dimensional context for the conformation of the inhibitory loop of CTI.

The canonical docking pose that we observed for FXIIa–CTI is similar to the trypsin–CTI and HGFA–CTI complexes predicted by CLUSPRO, albeit that there are fewer interactions overall for trypsin and HGFA, owing to Asp60A (H1 pocket) being absent in these proteases. Superposition of FXIIa and trypsin revealed a striking similarity in the main chain conformation of the 99-loop between FXIIa and trypsin that is not seen in other proteases (Fig. 6A), albeit that the FXIIa residue Tyr99 is replaced by Leu99 in trypsin. CTI does not inhibit kallikrein, FIXa, and FVIIa [17], and, consistent with this, the docking failed to place CTI Arg34 in the S1 pocket for any of the top 10 solutions examined (Table S1). Although the docking with the FXa protease did produce a solution with CTI Arg34 projecting into the S1 pocket, the Arg34 side chain does not fully enter the pocket and no salt bridge was formed with FXa Asp189, owing to steric clashes around the S1, S2 and S3 pockets. Examination of the CTI–thrombin docked complex revealed that, although Arg34 forms a salt bridge with Asp189, there are steric clashes between CTI and thrombin amino acid side chains in the region of the front of the S1 and S3 pockets; a similar situation was observed for FXIa. One final similarity between FXIIa and trypsin is in the region of the S1' pocket, where Tyr151 is present in both

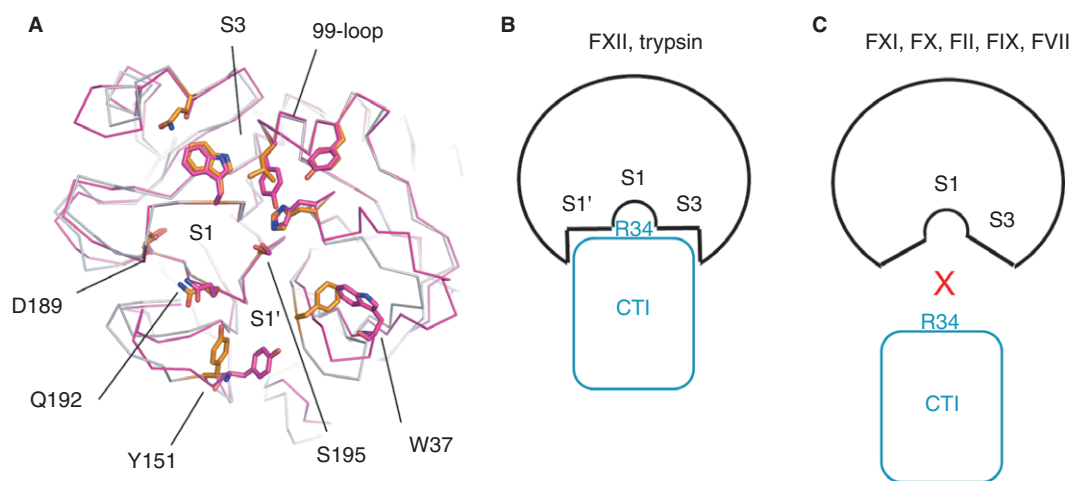


Fig. 6. A model for corn trypsin inhibitor (CTI) protease selectivity. (A) Superposition of the activated factor XII (FXIIa) model (purple) and trypsin (gray) shown as a C α backbone in the region of the S1 and S3 pockets, illustrating the main chain similarity of the 99-loop. Key side chains are shown as sticks for trypsin (orange) and FXIIa (purple). (B) A combination of features around the S1 and S3 pockets are more open for the bulky CTI inhibitor to bind, with shape changes in the S1 and S3 pockets of other proteases preventing binding of CTI by steric occlusion. [Color figure can be viewed at wileyonlinelibrary.com]

proteases (as well as in HGFA); it is absent in the other coagulation proteases. The area of the S1' pocket is hydrophobic in character, with contributions from the side chain of Trp37, and this is utilized by Leu35 of CTI.

Our data indicate that several factors contribute to CTI selectivity for FXIIa over other coagulation proteases, including: (i) the open shape of the S1, S1' and S3 pockets, accommodating the bulky helical structure of CTI around the P1 Arg34 (Fig. 6B); and (ii) FXIIa side chains Asp60A and Tyr151 in the area of the S1' pocket, which are missing in other coagulation proteases. A recently described antibody, 3F7, which binds to the FXII protease domain has been shown to be an effective anticoagulation agent [46]. This antibody binds via Asp60A, as mutation of this residue to lysine negated 3F7 antibody binding. Another well-characterized protein inhibitor of FXII that selectively blocks the intrinsic pathway of coagulation is the kissing bug protein infestin-4, although the molecular basis for its selectivity is unknown. Infestin-4, expressed as an albumin fusion, provides an effective treatment in murine models of stroke without causing a bleeding side effect [47,48].

This study used molecular modeling to predict FXIIa–inhibitor interactions. The fact that experimental data can be explained logically by this model underlines its validity. This model could thus be used as a starting point for rational inhibitor design for the treatment of thrombotic cardiovascular disease.

Addendum

B. K. Hamad, M. Pathak, and R. Manna: contributed to data acquisition, analysis and interpretation of data, preparation of the draft manuscript, and approval of the final version. P. M. Fischer conceived and designed the study, interpreted data, revised the intellectual content, and approved the final version. J. Emsley and L. V. Dekker conceived and designed the study, generated, analyzed and interpreted data, wrote the paper and revised the intellectual content, and generated the final version to be published.

Acknowledgements

The work described here was supported by the British Heart Foundation (BHF Programme Grant no. RG/12/9/29775 (J. Emsley), BHF project grant PG/09/025/27136 (J. Emsley), BHF studentship FS/11/61/2891 (R. Manna), and by studentship funding from the Kurdistan Regional Government (B. K. Hamad; Ref 11-2-5336)).

Disclosure of Conflict of Interests

The authors state that they have no conflict of interest.

Supporting Information

Additional Supporting Information may be found in the online version of this article:

Fig. S1. Superposition of the FXIIa hybrid model with the FXIIac and HGFA crystal structures.

Fig. S2. Stereo view of a cartoon diagram of the docked FXIIa–CTI complex.

Fig. S3. Analysis of the CTI inhibitory mechanism.

Fig. S4. CD spectra of wild-type and mutant (R34A) CTI recombinant protein.

Fig. S5. Gel filtration of recombinant CTI and CTI (R34A).

Table S1. CTI docking scores and rankings.

Table S2. Interfacial hydrogen bonds and salt bridges.

Movie S1. FXII–CTI complex and key interactions.

Movie S2. Pose of the central inhibition loop of CTI docked into factor XII.

References

- 1 Stavrou E, Schmaier AH. Factor XII: what does it contribute to our understanding of the physiology and pathophysiology of hemostasis & thrombosis. *Thromb Res* 2010; **125**: 210–15.
- 2 Henriques ES, Floriano WB, Reuter N, Melo A, Brown D, Gomes JANF, Maigret B, Nascimento MAC, Ramos MJ. The search for a new model structure of b-Factor XIIa. *J Comput Aided Mol Des* 2001; **15**: 309–22.
- 3 Pathak M, Wilmann P, Awford J, Li C, Hamad BK, Fischer PM, Drevény I, Dekker LV, Emsley J. Coagulation factor XII protease domain crystal structure. *J Thromb Haemost* 2015; **13**: 580–91.
- 4 Citarella F, Ravon DM, Pascucci B, Felici A, Fantoni A, Hack CE. Structure/function analysis of human factor XII using recombinant deletion mutants. Evidence for an additional region involved in the binding to negatively charged surfaces. *Eur J Biochem* 1996; **238**: 240–9.
- 5 Iwaki T, Castellino FJ. Plasma levels of bradykinin are suppressed in factor XII-deficient mice. *Thromb Haemost* 2006; **95**: 1003–10.
- 6 Emsley J, McEwan PA, Gailani D. Structure and function of factor XI. *Blood* 2010; **115**: 2569–77.
- 7 Pauer HU, Renne T, Hemmerlein B, Legler T, Fritzlars S, Adham I, Muller-Esterl W, Emons G, Sancken U, Engel W, Burfeind P. Targeted deletion of murine coagulation factor XII gene – a model for contact phase activation *in vivo*. *Thromb Haemost* 2004; **92**: 503–8.
- 8 Renne T, Pozgajova M, Gruner S, Schuh K, Pauer HU, Burfeind P, Gailani D, Nieswandt B. Defective thrombus formation in mice lacking coagulation factor XII. *J Exp Med* 2005; **202**: 271–81.
- 9 Ng TB. Naturally occurring anti-insect proteins: current status and future aspects. In: Rai M, Carpinella MC, eds. *Naturally Occurring Bioactive Compounds*. Amsterdam: Elsevier, 2006: 409–10.
- 10 Lei MG, Reeck GR. Combined use of trypsin-agarose affinity chromatography and reversed-phase high-performance liquid chromatography for the purification of single-chain protease inhibitor from corn seeds. *J Chromatogr* 1986; **363**: 315–21.
- 11 Wen L, Huang JK, Zen KC, Johnson BH, Muthukrishnan S, MacKay V, Manney TR, Manney M, Reeck GR. Nucleotide sequence of a cDNA clone that encodes the maize inhibitor of trypsin and activated Hageman factor. *Plant Mol Biol* 1992; **18**: 813–14.
- 12 Chen Y. *Distribution of Trypsin Inhibitors in Plant Food Stuffs*. Food Science. Manhattan, KS: Kansas State University, 1972.
- 13 Hazegh-Azam M, Kim SS, Masoud S, Andersson L, White F, Johnson L, Muthukrishnan S, Reeck G. The corn inhibitor of activated

- Hageman factor: purification and properties of two recombinant forms of the protein. *Protein Expr Purif* 1998; **13**: 143–9.
- 14 Hansson KM, Nielsen S, Elg M, Deinum J. The effect of corn trypsin inhibitor and inhibiting antibodies for FXIa and FXIIa on coagulation of plasma and whole blood. *J Thromb Haemost* 2014; **12**: 1678–86.
 - 15 Chen I, Mitchell HL. Trypsin inhibitors in plants. *Phytochemistry* 1973; **12**: 327–30.
 - 16 Hojima Y, Pierce JV, Pisano JJ. Hageman factor fragment inhibitor in corn seeds: purification and characterization. *Thromb Res* 1980; **20**: 149–62.
 - 17 Hojima Y, Pierce JV, Pisano JJ. Plant inhibitors of serine proteinases: hageman factor fragment, kallikreins, plasmin, thrombin, factor Xa, trypsin, and chymotrypsin. *Thromb Res* 1980; **20**: 163–71.
 - 18 Hojima Y, Tankersley DL, Miller-Andersson M, Pierce JV, Pisano JJ. Enzymatic properties of human Hageman factor fragment with plasma prekallikrein and synthetic substrates. *Thromb Res* 1980; **18**: 417–30.
 - 19 Swartz MJ, Mitchell HL, Cox DJ, Reeck GR. Isolation and characterization of trypsin inhibitor from opaque-2 corn seeds. *J Biol Chem* 1977; **252**: 8105–7.
 - 20 Chong GL, Reeck GR. Interaction of trypsin, beta-factor XIIIa, and plasma kallikrein with a trypsin inhibitor isolated from barley seeds: a comparison with the corn inhibitor of activated Hageman factor. *Thromb Res* 1987; **48**: 211–21.
 - 21 Ratnoff OD. Studies on the inhibition of ellagic acid-activated Hageman factor (factor XII) and Hageman factor fragments. *Blood* 1981; **57**: 55–8.
 - 22 Yau JW, Stafford AR, Liao P, Fredenburgh JC, Roberts R, Brash JL, Weitz JI. Corn trypsin inhibitor coating attenuates the prothrombotic properties of catheters *in vitro* and *in vivo*. *Acta Biomater* 2012; **8**: 4092–100.
 - 23 Behnke CA, Yee VC, Trong IL, Pedersen LC, Stenkamp RE, Kim SS, Reeck GR, Teller DC. Structural determinants of the bifunctional corn Hageman factor inhibitor: x-ray crystal structure at 1.95 Å resolution. *Biochemistry* 1998; **37**: 15277–88.
 - 24 Mahoney WC, Hermodson MA, Jones B, Powers DD, Corfman RS, Reeck GR. Amino acid sequence and secondary structural analysis of the corn inhibitor of trypsin and activated Hageman factor. *J Biol Chem* 1984; **259**: 8412–16.
 - 25 Chen MS, Feng G, Zen KC, Richardson M, Valdes-Rodriguez S, Reeck GR, Kramer KJ. α -Amylases from three species of stored grain Coleoptera and their inhibition by wheat and corn proteinaceous inhibitors. *Insect Biochem Mol Biol* 1992; **22**: 261–8.
 - 26 Chen ZY, Brown RL, Russin JS, Lax AR, Cleveland TE. A corn trypsin inhibitor with antifungal activity inhibits *Aspergillus flavus* alpha-amylase. *Phytopathology* 1999; **89**: 902–7.
 - 27 Chen ZY, Brown RL, Lax AR, Guo BZ, Cleveland TE, Russin JS. Resistance to *Aspergillus flavus* in corn kernels is associated with a 14-kDa protein. *Phytopathology* 1998; **88**: 276–81.
 - 28 Jin L, Pandey P, Babine RE, Gorga JC, Seidl KJ, Gelfand E, Weaver DT, Abdel-Meguid SS, Strickler JE. Crystal structures of the FXIa catalytic domain in complex with ecotin mutants reveal substrate-like interactions. *J Biol Chem* 2005; **280**: 4704–12.
 - 29 Korneeva VA, Trubetskov MM, Korshunova AV, Lushchekina SV, Kolyadko VN, Sergienko OV, Lunin VG, Pantelev MA, Ataullakhanov FI. Interactions outside the proteinase-binding loop contribute significantly to the inhibition of activated coagulation factor XII by its canonical inhibitor from corn. *J Biol Chem* 2014; **289**: 14109–20.
 - 30 Bouckaert C, Serra S, Rondelet G, Dolusic E, Wouters J, Dogne JM, Frederick R, Pochet L. Synthesis, evaluation and structure–activity relationship of new 3-carboxamide coumarins as FXIIa inhibitors. *Eur J Med Chem* 2016; **110**: 181–94.
 - 31 Schwede T, Kopp J, Guex N, Peitsch MC. SWISS-MODEL: an automated protein homology-modeling server. *Nucleic Acids Res* 2003; **31**: 3381–5.
 - 32 Guex N, Peitsch MC, Schwede T. Automated comparative protein structure modeling with SWISS-MODEL and Swiss-PdbViewer: a historical perspective. *Electrophoresis* 2009; **30** (Suppl. 1): S162–73.
 - 33 Comeau SR, Gatchell DW, Vajda S, Camacho CJ. ClusPro: a fully automated algorithm for protein–protein docking. *Nucleic Acids Res* 2004; **32**: W96–9.
 - 34 Comeau SR, Gatchell DW, Vajda S, Camacho CJ. ClusPro: an automated docking and discrimination method for the prediction of protein complexes. *Bioinformatics* 2004; **20**: 45–50.
 - 35 Kozakov D, Hall DR, Beglov D, Brenke R, Comeau SR, Shen Y, Li K, Zheng J, Vakili P, Paschalidis I, Vajda S. Achieving reliability and high accuracy in automated protein docking: ClusPro, PIPER, SDU, and stability analysis in CAPRI rounds 13–19. *Proteins* 2010; **78**: 3124–30.
 - 36 Kozakov D, Brenke R, Comeau SR, Vajda S. PIPER: an FFT-based protein docking program with pairwise potentials. *Proteins* 2006; **65**: 392–406.
 - 37 Krissinel E, Henrick K. Inference of macromolecular assemblies from crystalline state. *J Mol Biol* 2007; **372**: 774–97.
 - 38 Hayashi K, Kojima C. pCold-GST vector: a novel cold-shock vector containing GST tag for soluble protein production. *Protein Expr Purif* 2008; **62**: 120–7.
 - 39 Lowry OH, Rosebrough NJ, Farr AL, Randall RJ. Protein measurement with the Folin phenol reagent. *J Biol Chem* 1951; **193**: 265–75.
 - 40 Bohm G, Muhr R, Jaenicke R. Quantitative analysis of protein far UV circular dichroism spectra by neural networks. *Protein Eng* 1992; **5**: 191–5.
 - 41 Papagrigoriou E, McEwan PA, Walsh PN, Emsley J. Crystal structure of the factor XI zymogen reveals a pathway for trans-activation. *Nat Struct Mol Biol* 2006; **13**: 557–8.
 - 42 Silverberg M, Dunn JT, Garen L, Kaplan AP. Autoactivation of human Hageman factor. Demonstration utilizing a synthetic substrate. *J Biol Chem* 1980; **255**: 7281–6.
 - 43 Bode W, Mayr I, Baumann U, Huber R, Stone SR, Hofsteenge J. The refined 1.9 Å crystal structure of human alpha-thrombin: interaction with D-Phe-Pro-Arg chloromethylketone and significance of the Tyr-Pro-Pro-Trp insertion segment. *EMBO J* 1989; **8**: 3467–75.
 - 44 Campos IT, Souza TA, Torquato RJ, De Marco R, Tanaka-Azevedo AM, Tanaka AS, Barbosa JA. The Kazal-type inhibitors infestins 1 and 4 differ in specificity but are similar in three-dimensional structure. *Acta Crystallogr D Biol Crystallogr* 2012; **68**: 695–702.
 - 45 Spraggon G, Phillips C, Nowak UK, Ponting CP, Saunders D, Dobson CM, Stuart DI, Jones EY. The crystal structure of the catalytic domain of human urokinase-type plasminogen activator. *Structure* 1995; **3**: 681–91.
 - 46 Larsson M, Rayzman V, Nolte MW, Nickel KF, Bjorkqvist J, Jamsa A, Hardy MP, Fries M, Schmidbauer S, Hedenqvist P, Broome M, Pragst I, Dickneite G, Wilson MJ, Nash AD, Panousis C, Renne T. A factor XIIa inhibitory antibody provides thromboprotection in extracorporeal circulation without increasing bleeding risk. *Sci Transl Med* 2014; **6**: 222ra17.
 - 47 Hagedorn I, Schmidbauer S, Pleines I, Kleinschnitz C, Kronthaler U, Stoll G, Dickneite G, Nieswandt B. Factor XIIa inhibitor recombinant human albumin Infestin-4 abolishes occlusive arterial thrombus formation without affecting bleeding. *Circulation* 2010; **121**: 1510–17.
 - 48 Krupka J, May F, Weimer T, Pragst I, Kleinschnitz C, Stoll G, Panousis C, Dickneite G, Nolte MW. The coagulation factor XIIa inhibitor rHA-Infestin-4 improves outcome after cerebral ischemia/reperfusion injury in rats. *PLoS One* 2016; **11**: e0146783.