



Post-Ischemic Bowel Stricture: CT Features in Eight Cases

Jin Sil Kim, MD¹, Hyun Jin Kim, MD², Seung-Mo Hong, MD³, Seong Ho Park, MD², Jong Seok Lee, MD², Ah Young Kim, MD², Hyun Kwon Ha, MD⁴

¹Department of Radiology, College of Medicine, Ewha Womans University, Mokdong Hospital, Seoul 07985, Korea; Departments of ²Radiology and Research Institute of Radiology and ³Pathology, University of Ulsan College of Medicine, Asan Medical Center, Seoul 05505, Korea; ⁴Department of Radiology, University of Ulsan College of Medicine, Gangneung Asan Hospital, Gangneung 25440, Korea

Objective: To investigate the characteristic radiologic features of post-ischemic stricture, which can then be implemented to differentiate that specific disease from other similar bowel diseases, with an emphasis on computed tomography (CT) features.

Materials and Methods: Eight patients with a diagnosis of ischemic bowel disease, who were also diagnosed with post-ischemic stricture on the basis of clinical or pathologic findings, were included. Detailed clinical data was collected from the available electronic medical records. Two radiologists retrospectively reviewed all CT images. Pathologic findings were also analyzed.

Results: The mean interval between the diagnosis of ischemic bowel disease and stricture formation was 57 days. The severity of ischemic bowel disease was variable. Most post-ischemic strictures developed in the ileum (n = 5), followed by the colon (n = 2) and then the jejunum (n = 1). All colonic strictures developed in the “watershed zone.” The pathologic features of post-ischemic stricture were deep ulceration, submucosal/subserosal fibrosis and chronic transmural inflammation. The mean length of the post-ischemic stricture was 7.4 cm. All patients in this study possessed one single stricture. On contrast-enhanced CT, most strictures possessed concentric wall thickening (87.5%), with moderate enhancement (87.5%), mucosal enhancement (50%), or higher enhancement in portal phase than arterial phase (66.7%).

Conclusion: Post-ischemic strictures develop in the ileum, jejunum and colon after an interval of several weeks. In the colonic segment, strictures mainly occur in the “watershed zone.” Typical CT findings include a single area of concentric wall thickening of medium length (mean, 7.4 cm), with moderate and higher enhancement in portal phase and vasa recta prominence.

Keywords: Bowel stricture; Stenosis; Ischemic stricture; Bowel ischemia; CT

Received March 16, 2017; accepted after revision June 4, 2017.

Corresponding author: Hyun Jin Kim, MD, Department of Radiology and Research Institute of Radiology, University of Ulsan College of Medicine, Asan Medical Center, 88 Olympic-ro 43-gil, Songpa-gu, Seoul 05505, Korea.

• Tel: (822) 3010-5761 • Fax: (822) 476-4719

• E-mail: leesoolbee@daum.net

This is an Open Access article distributed under the terms of the Creative Commons Attribution Non-Commercial License (<http://creativecommons.org/licenses/by-nc/4.0>) which permits unrestricted non-commercial use, distribution, and reproduction in any medium, provided the original work is properly cited.

INTRODUCTION

Post-ischemic strictures are extremely rare sequelae of ischemic bowel disease (1, 2). Post-ischemic strictures present as circumferential segmental ulcers and afferent tubular segment stenosis (3). However, they are at times difficult to differentiate from other bowel diseases such as Crohn’s disease, nonsteroidal anti-inflammatory drug (NSAID)-induced enteropathy and/or cryptogenic multifocal ulcerous stenosing enteritis (CMUSE) secondary

to overlapping clinical symptoms and histopathological findings (4). If a patient does not have a clear history of ischemic bowel disease, it is difficult to make a diagnosis of post-ischemic stricture formation. Therefore, if characteristic radiologic features of post-ischemic strictures are identified, these “markers” might help differentiate them from other, similar bowel diseases.

A few cases of post-traumatic ischemic strictures and ischemic strictures following surgery have been reported (5-7), as well as ischemic stricture as a result of mesenteric vein thrombosis and ischemic enteritis (3, 4, 8-10). However, most of these studies focused on clinical findings. Contrast-enhanced computed tomography (CT) is the diagnostic tool of choice for assessment of the location, nature, extent and etiology of any bowel obstruction thought to be present. Therefore, the purpose of this study was to investigate the CT findings associated with post-ischemic strictures that could be used to differentiate the disease from other bowel diseases. We evaluated a series of eight patients, with available surgical specimens and correlated CT findings with pathologic findings.

MATERIALS AND METHODS

This study was approved by our Institutional Review Board, which waived the requirement for Informed Consent from each patient owing to the retrospective nature of the analyses.

Patients

We searched for the terms “ischemic colitis,” “ischemic enteritis,” “ischemic bowel disease,” “bowel ischemia,” and “ischemic stricture” in abdominal CT reports from July 2005 to August 2015. Of the 2230 patients identified, eight patients (five men and three women; age range, 29–86 years; mean age, 59.3 years) who met the following three criteria were included in the study. The three criteria consisted of: 1) documented CT evidence of both ischemia and the resultant stricture, 2) a medical history negative for previous bowel surgery or other procedures such as intestinal vessel embolization or abdominal trauma, which could result in ischemia; and 3) pathologic confirmation of benign ischemic stricture obtained through segmental resection (n = 5) or through colonoscopy or double-balloon enteroscopy (n = 3).

Clinical Data

Detailed clinical data (compiled from the available electronic medical records) was reviewed. The information included patient gender, chronologic age and a description of the underlying disease process to include symptoms at the time of diagnosis with ischemic bowel disease and at the time of stricture development and vital signs at the time of diagnosis with ischemic bowel disease (blood pressure, heart rate, white blood cell count, and body temperature). The base information also described the nature and duration of the physician-supervised care of ischemic bowel disease and stricture and the time elapsed from the date of diagnosis with ischemic bowel disease and formal identification of stricture development.

Imaging Techniques

All of the patients who participated in the study underwent contrast-enhanced CT imaging with 16- or 64-multidetector CT scanners (Somatom Sensation 16 or 64 or Somatom Definition, Siemens Medical Systems, Erlangen, Germany), with 3–5 mm. slice-thickness using dual-phase scanning. Arterial and portal venous phase imaging scans (abdominal-pelvic dynamic CT [dynamic CT]) were obtained, with or without oral administration of 1200 mL of a 3% sorbitol solution, or single portal-phase scanning (routine abdominopelvic CT), with or without pre-contrast imaging. For contrast enhancement, intravenous contrast media (2–2.5 mL/kg; iopromide [Ultravist, Bayer Healthcare, Berlin, Germany] or iopamidol [Pamiray, Dongkook, Jincheon, Korea]) was administered at a rate of 2–3 mL/s using an automatic injector. The arterial and portal phase scans were obtained with a 15–25-second delay using the bolus-tracking technique and a fixed 72-second delay, respectively, following intravenous injection of the contrast agent.

Two patients who did not have a complete or high-grade obstruction at the time of imaging underwent a small bowel series, and one patient underwent a double-contrast barium enema of the colon (colon study). The small bowel series was performed after nothing by mouth for at least eight hours, and with the use of a barium and methylcellulose solution. A single-contrast examination was performed to evaluate the entire small intestine. This was followed by a double contrast examination after oral administration of an effervescent agent.

Image Analysis

All eight patients underwent CT scans at the time of diagnosis with post-ischemic stricture, and images were available for each patient. The CT images were retrospectively reviewed by two radiologists, with a consensus being reached regarding their findings. The findings revealed by the imaging studies were evaluated according to the methods established in previous studies as follows (11, 12): location; segment length; thickness of the affected bowel wall (one-side); evidence of thickening of the wall (concentric or non-concentric), enhancement characteristics during arterial and portal phase imaging (homogeneous, with the entire bowel wall enhancing equally; mucosal, with only the innermost layer enhancing; layered, with both the mucosal and serosal layers enhancing and with a central band of relatively reduced enhancement), presence of higher enhancement in portal phase than arterial phase (defined as when enhancement during the portal phase is 15 HU higher than during the arterial phase, or when the enhanced area of the wall is larger during the portal phase as compared with the arterial phase), level of enhancement (decreased, decreased as compared with the adjacent normal bowel wall; mild, similar as compared with the adjacent normal bowel; moderate, more than normal bowel wall but less than nearby vascular structures; marked, markedly increased versus nearby vascular structures). Mesenteric manifestations such as vasa recta prominence or infiltration and ascites were also seen and documented. Bowel obstruction of small and large bowel was evaluated using a 3-point scale (absent, low-grade, or high-grade). A low-grade obstruction was defined as dilatation of the proximal small bowel by 3–4 cm and dilatation of the proximal large bowel by 6–10 cm. A high-grade obstruction was defined as proximal small bowel dilatation of > 4 cm and proximal large bowel dilatation of > 10 cm (13).

Computed tomography images obtained at the time of diagnosis (with ischemic bowel disease were also evaluated). Attenuation was appreciated on pre-contrast images, enhancement characteristics during the portal phase, the level of enhancement during the portal phase, the presence of bowel wall thickening and the segment length of affected bowel were evaluated (for confirmation of abdominal vascular abnormalities). Any mesenteric manifestations of disease, as well as evidence of ascites were also documented. The mesenteric ischemia category was determined by the aggregate of the radiographic findings (14).

Small bowel series and colon studies with barium were also analyzed.

Pathologic Evaluation

Tissue specimens for pathologic evaluation were available, obtained from five patients who underwent surgical resection of the post-ischemic stricture. Tissue samples were reviewed by one pathologist. Another author correlated the pathology identified with the imaging findings.

RESULTS

Clinical Findings for the Eight Patients with Post-Ischemic Stricture

Clinical findings are summarized in Table 1. Six patients (75.0%) had underlying diseases such as diabetes mellitus, hypertension, chronic renal failure including kidney transplantation, cardiac disease and/or a previous history of cancer. The main symptoms attributed to ischemic bowel disease were abdominal pain (patient #3, 4, 6, 7, and 8) and diarrhea (patient #1, 2, 3, and 4). One patient reported hematochezia (patient #2). Vital parameters were stable in all patients at the time of diagnosis with post-ischemic stricture except for one patient (patient #1); patient #1 was found to have low blood pressure (systolic and diastolic blood pressure, 92 and 42 mm Hg, respectively). This patient could not be medically cleared to undergo surgery due to comorbidities; conservative management with antibiotics was felt to be the best treatment plan for this patient. Regarding treatment of ischemic bowel disease, five patients (5/8, 62.5%; patient #3, 4, 6, 7, and 8) received anticoagulation therapy, which included administration of Warfarin and Heparin. Two patients (2/8, 25.0%; patient #1 and 2) were treated with antibiotics. One patient (1/8, 12.5%; patient #5) was treated conservatively, which included nothing by mouth. One patient (patient #3), diagnosed with superior mesenteric artery occlusion on the initial CT scan, underwent exploratory laparotomy. However, no abnormalities associated with the bowel loops were identified on exploratory laparotomy, and bowel loop resection was not performed. This patient was then treated with anticoagulation therapy.

Post-ischemic stricture developed a mean of 57 days (range, 14–144 days; median, 48 days) after bowel ischemia occurred. At the time of diagnosis with post-ischemic stricture of the bowel loops, six patients had abdominal pain (6/8, 75.0%). For treatment of the strictures, five

Post-Ischemic Bowel Stricture

patients (5/8, 62.5%) underwent surgery and one patient (patient #5) underwent endoscopic balloon dilation. One patient (patient #2), who had been considering surgical

intervention because conservative care had proven ineffectual, could not undergo surgery because of a number of comorbidities and the presence of pneumonia.

Table 1. Clinical Features of Group of Eight Patients with Post-Ischemic Strictures

Patient No.	Sex	Age	Underlying Disease	BP (mm Hg) ^{††}	HR (bpm) [†]	BT (°C) [†]	WBC (10 ³ mm ³) [†]	Symptoms at Time of Stricture Development	Stricture Treatment	Time (Days) [*]
1	M	67	DM; hypertension; CRF; complete AV block	92/42	79	36.2	10.7	LOC during defecation	Subtotal colectomy	98
2	F	67	DM; atrial fibrillation; congestive heart failure	90/64	87	36.3	4.3	Abdominal pain; diarrhea	Antibiotics	43
3	F	63	Hypertension; atrial fibrillation	107/66	124	38.3	7.8	Hypoalbuminemia	Conservative treatment	144
4	M	67	Previous glottic cancer; atrial fibrillation; mitral valve replacement; RA and LA thrombi	151/103	103	36.0	10.3	Abdominal pain	Small bowel R & A	15
5	M	86	Bile duct resection due to CBD cancer; hypertension; DM	NA	NA	NA	NA	Post prandial abdominal pain; constipation	Balloon dilation	57
6	M	55	None	NA	NA	NA	NA	Abdominal pain	Small bowel R & A	14
7	F	41	Kidney transplantation; hypertension	127/87	89	37.1	6.4	Abdominal pain; vomiting	Small bowel R & A	32
8	M	29	None	132/82	90	37.0	NA	Abdominal pain	Small bowel R & A	53

*Time elapsed from ischemic event to stricture development, [†]Systolic and diastolic blood pressure, ^{††}At time of ischemic bowel disease. AV = atrioventricular, BP = blood pressure, BT = body temperature, CBD = common bile duct, CRF = chronic renal failure, DM = diabetes mellitus, HR = heart rate, LA = left atrium, LOC = loss of consciousness, NA = not available, RA = right atrium, R & A = resection and anastomosis, WBC = white blood cell count

Table 2. Radiographic Features of Group of Eight Patients with Post-Ischemic Strictures

Patient No.	Site	Length (cm)	Wall Thickness (mm)	Wall Thickening	Enhancement of Strictures on CT Scan		Obstruction
					Arterial	Portal	
1	Splenic flexure of colon	15	5	Con	Mild Homogeneous	Moderate Mucosal	High-grade
2	DC-SC junction	9	6	Con	Moderate Mucosal	Moderate Homogeneous	Low-grade
3	Ileum	6	6	Con	Moderate Mucosal	Moderate Mucosal	Low-grade
4	Ileum	6	7	Con	Moderate Mucosal	Moderate Mucosal	High-grade
5	Ileum	12	4	Non-con	NA	Marked Mucosal	High-grade
6	Ileum	4	5	Con	Moderate Mucosal	Moderate Layered	Low-grade
7	Ileum	4	6	Con	NA	Moderate Homogeneous	Low-grade
8	Jejunum	2	3	Con	Moderate Mucosal	Moderate Homogeneous	High-grade

Con = concentric, DC = descending colon, SC = sigmoid colon

Radiographic Features of Post-Ischemic Stricture and Prior Ischemic Bowel Disease

CT evidence of post-ischemic stricture are summarized in Table 2. Each patient had one stricture only. The mean length and thickness of the affected bowel was 7.4 ± 4.8 cm and 5.3 ± 1.3 mm, respectively. Most post-ischemic strictures initially developed in the ileum (5/8, 62.5%),

followed by the jejunum (1/8, 12.5%), splenic flexure of the colon (1/8, 12.5%) and finally the junction of the descending colon and the sigmoid colon (1/8, 12.5%). Most strictures displayed concentric thickening. For evaluation of post-ischemic strictures, six patients underwent dynamic CT scanning which included both the arterial phase and portal phases. Two patients underwent routine abdomino-pelvic

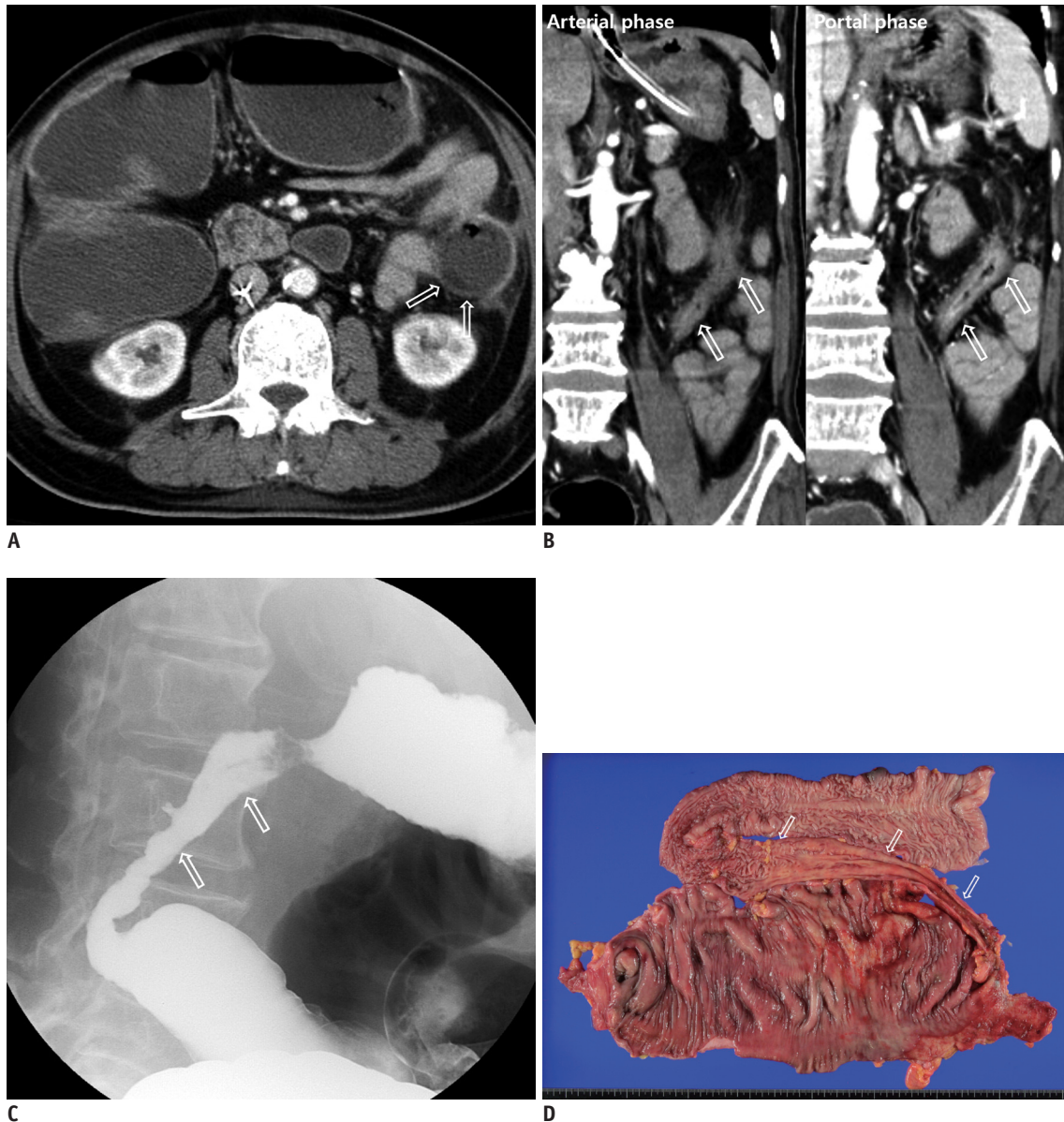


Fig. 1. 67-year-old man with multiple pre-existing and underlying pathologies (including diabetes mellitus, hypertension, chronic renal failure, and complete AV block) (patient #1) who suffered loss of consciousness during defecation.

A. CT scan performed (at time of diagnosis of ischemic bowel disease) shows some areas of decreased enhancement (arrows) in splenic flexure of colon, which is consistent with ischemic colitis. Patient had diarrhea at that time, and vital parameters were stable. Patient was managed conservatively, with antibiotics. **B.** Coronal arterial and portal phase images obtained 98 days after ischemic event show better bowel wall enhancement in portal phase than arterial phase (mild homogeneous enhancement in arterial phase and moderate mucosal enhancement in portal phase) (arrows) as well as vasa recta prominence around site of stricture. **C.** Colon study shows thickened folds (“thumb printing”), which is typical finding in cases of ischemic colitis. Patient underwent subtotal colectomy. **D.** Gross specimen of resected large bowel reveals approximately ten centimeters long segmental stricture (arrows) with dilatation of proximal bowel segment. This corresponds with CT image findings (arrows in **B**) and colon study (arrows in **C**). AV = atrioventricular

Post-Ischemic Bowel Stricture

CT scans limited to the portal phase. On the arterial phase images (available in six), the strictures visualized displayed mild mucosal enhancement (1/6, 16.7%) or moderate mucosal enhancement (5/6, 83.3%). Of the six strictures with both arterial and portal phase images available, four strictures visualized displayed higher enhancement in portal phase than arterial phase (4/6, 66.6%). On the portal phase images, seven strictures (7/8, 87.5%) visualized

displayed moderate enhancement and one (1/8, 12.5%) displayed marked enhancement. Four strictures (4/8, 50%) visualized displayed mucosal enhancement, three (3/8, 37.5%) displayed homogeneous enhancement, and one (1/8, 12.5%) displayed layered enhancement. Vasa recta prominence was appreciated in all patients (8/8). Four patients (4/8, 50.0%) were diagnosed with low-grade obstruction and four patients (4/8, 50.0%) were diagnosed

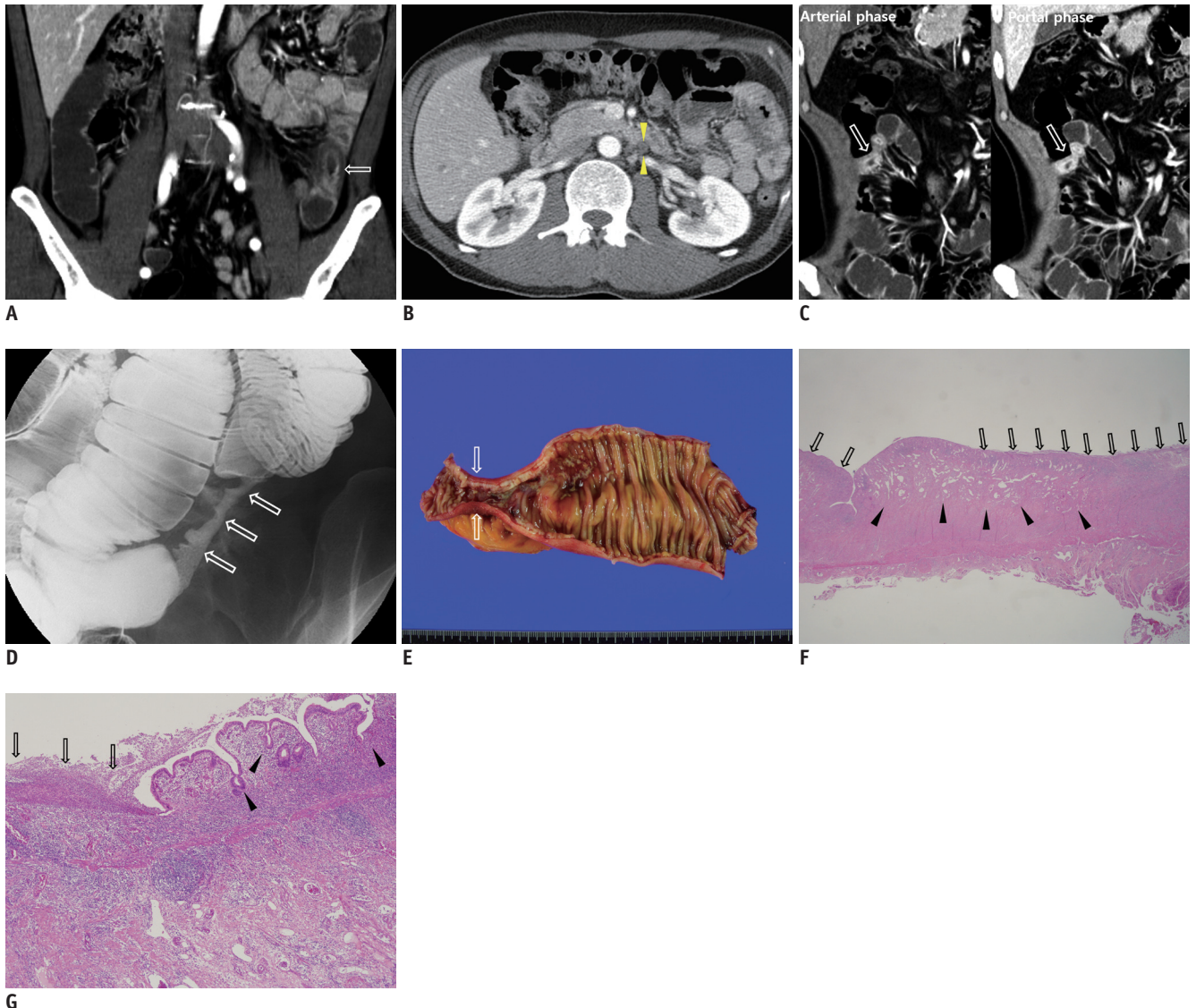


Fig. 2. 55-year-old man without underlying disease (patient #6).

A, B. Coronal and axial images from reformatted CT scan performed at time of diagnosis (with ischemic bowel disease) show thickening of wall of ileum with decreased enhancement, which is consistent with venous ischemia (arrow in **A**); inferior mesenteric vein thrombosis is also noted (arrowheads in **B**). Patient had abdominal pain at that time, and vital parameters were stable. Patient underwent anticoagulation therapy with Heparin. **C.** Coronal images from contrast-enhanced CT obtained when patient had abdominal pain, fourteen days after ischemic event. Post-ischemic stricture with concentric wall thickening and higher enhancement in portal phase than arterial phase (moderate mucosal enhancement in arterial phase and moderate layered enhancement in portal phase) (arrows) was identified. **D.** Small bowel series reveals fold effacement at site of stricture (arrows). Patient underwent small bowel resection and anastomosis. **E.** Gross specimen of resected large bowel reveals approximately four centimeters long segmental stricture (arrows) with dilatation of proximal bowel segment, which corresponds with CT image findings (arrow in **C**). **F.** Low power magnification shows ulceration (arrows) and dilatation of submucosal venules and capillaries (arrowheads) (original magnification, $\times 12.5$) **G.** Mucosa shows ulceration (arrows) and crypt distortion of residual epithelial cells (arrowheads) ($\times 40$).

Table 3. Radiographic Features of Group of Eight Patients with Post-Ischemic Strictures at Time of Diagnosis with Ischemic Bowel Disease

Patient No.	Vessels	Length (cm)	Enhancement of Bowel Wall	Ischemic Category
1	Moderate atherosclerotic change at aorta and IMA proximal	20	Decreased; wall defect	Ischemic colitis (nonocclusive)
2	Mild atherosclerotic change at aorta	20	Decreased	Ischemic colitis (nonocclusive)
3	Moderate atherosclerotic change at aorta; focal thrombosis at mid SMA	40	Mild Mucosal	Arterial occlusion
4	Mild atherosclerotic change at aorta and SMA	10	Moderate Mucosal; focal decreased	Nonocclusive mesenteric ischemia
5	Moderate atherosclerotic change at aorta and SMA	14	Decreased; wall defect	Nonocclusive mesenteric ischemia
6	IMV obliteration	10	Decreased	Venous occlusion
7	Thrombosis in SMV and portal vein	25	Mild Homogeneous; wall defect	Venous occlusion
8	Thrombosis in SMV and portal vein	40	Mild Layered; wall defect	Venous occlusion

IMA = inferior mesenteric artery, IMV = inferior mesenteric vein, SMA = superior mesenteric artery, SMV = superior mesenteric vein

high-grade obstruction. One patient, with colonic stricture caused by ischemic colitis (patient #1), had a colon study performed which revealed "thumbprinting," ulcers, and haustral loss with smooth tapering in the narrow portion of the colon (Fig. 1). Two patients with small bowel strictures (patient #4 and 6) had a small bowel series performed and the studies revealed fold effacement and segmental luminal narrowing in the small bowel loops (Fig. 2).

CT findings of bowel segment and vascular structure at the time of diagnosis with ischemic bowel disease are summarized in Table 3. On CT images obtained at the time of diagnosis with ischemic bowel disease, high attenuation of the bowel wall was seen on pre-contrast images in two patients (2/8, 25%; patient #7 and 8), which is consistent with intra-mural hemorrhage. Images obtained from four patients (4/8, 50.0%) displayed decreased enhancement of the ischemic bowel wall. Images from five patients (5/8, 62.5%) possessed a focal wall defect or a focal decrease in enhancement. Classification by ischemic category resulted in three patients (3/8, 37.5%) being diagnosed with venous occlusion, and four patients (4/8, 50%) diagnosed with non-occlusive mesenteric ischemia (including ischemic colitis). Only one patient (1/8, 12.5%) was diagnosed with arterial occlusion with reperfusion injury. This patient underwent a negative exploratory, because all bowel segments were found to be normal in color. The mean length of the ischemic bowel among all patients was 22.4 ± 12.0 cm.

Histopathological Findings

Five patients (5/8, 62.5%) underwent surgical resection of the stricture (patient #1, 4, 6, 7, and 8). Histopathological findings of the tissue samples included deep ulceration, chronic trans-mural inflammation, submucosal and subserosal fibrosis (scarring) and crypt distortion of the mucosa. Three of five specimens (3/5, 60%) showed dilatation of submucosal venules and capillaries (patient #6, 7, and 8). An organizing abscess was identified in one of the patients (patient #4).

DISCUSSION

To our knowledge, no study has focused on the radiologic features of post-ischemic strictures. A few cases of post-ischemic stricture have been identified and clinical findings have mainly been described in case reports (4, 8-10, 15). The cases in this study highlight several important aspects of post-ischemic stricture. First, post-ischemic stricture develops in any bowel segment and mainly develop in the watershed zone, particularly in colon. Second, post-ischemic strictures usually developed within several weeks of an ischemic event. Third, post-ischemic strictures developed in one bowel segment only. Fourth, the appearance of a post-ischemic stricture is typically concentric wall thickening of medium length with moderate and higher enhancement in portal phase than arterial phase; vasa recta prominence is also noted.

Most previously reported cases of post-ischemic stricture

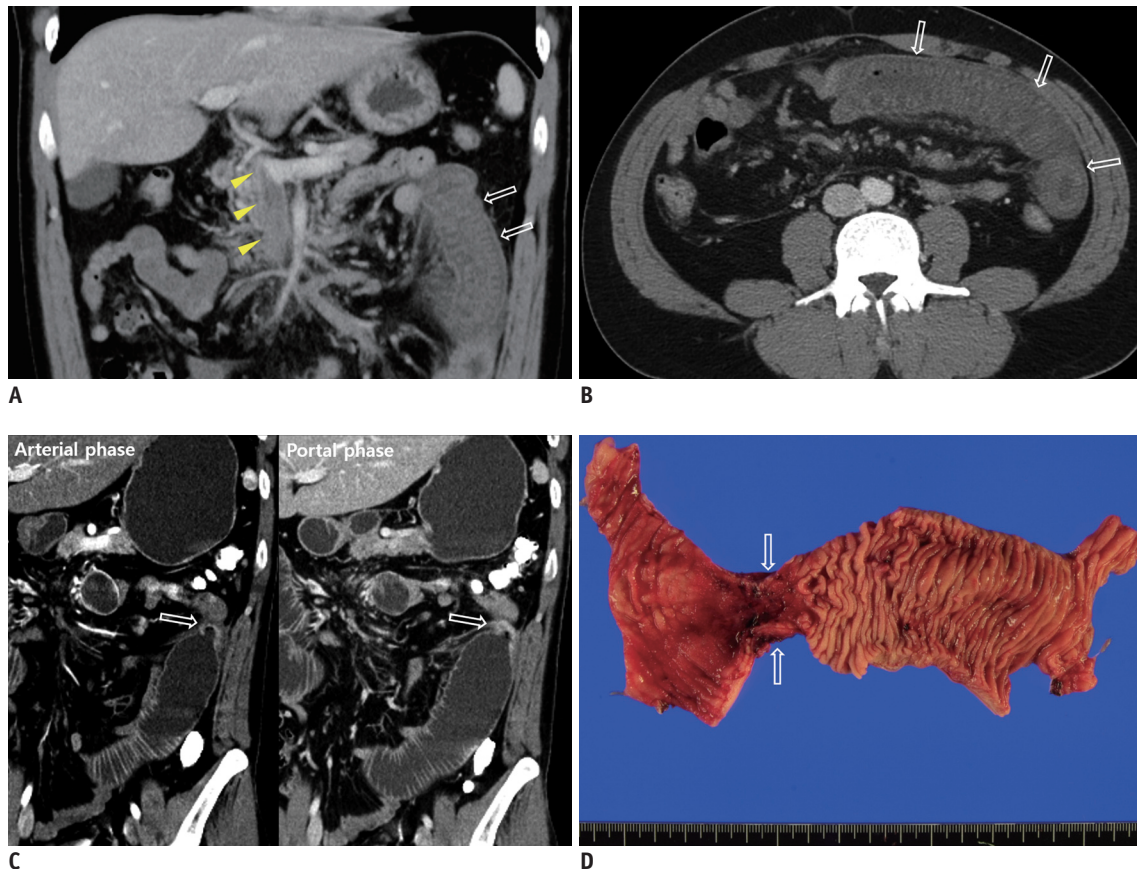


Fig. 3. 29-year-old man without underlying disease (patient #8).

A, B. Coronal and axial images obtained from reformatted CT scan performed at time of diagnosis with ischemic bowel disease reveal superior mesenteric vein thrombosis (arrowheads) and layered enhancement of thickened jejunal wall indicating venous ischemia (arrows). Patient had abdominal pain at that time and vital parameters were stable. Patient underwent anticoagulation therapy with Heparin. **C.** Axial and coronal images of contrast-enhanced CT scan obtained when patient had abdominal pain, which was 54 days after ischemic event, reveal segmental post-ischemic stricture with concentric wall thickening and better enhancement in portal phase than arterial phase (moderate mucosal enhancement during arterial phase and moderate homogeneous enhancement during portal phase). Proximal bowel dilatation is also seen, indicating high-grade obstruction. Patient underwent small bowel resection and anastomosis. **D.** Gross specimen of resected large bowel reveals approximately two centimeter long segmental stricture with dilatation of proximal bowel segment, which corresponds with CT image findings (arrows in **C** and **D**).

developed secondary to venous ischemia (9, 16); a few reported cases developed secondary to ischemic enteritis or ischemic colitis (3, 17). In our study, various types of ischemic bowel disease were found to be responsible for the development of post-ischemic stricture. These included non-occlusive ischemia, arterial occlusion, and venous occlusion. Most patients evaluated in previous studies were of advanced age with underlying conditions such as cardiac disease or diabetes mellitus. If the patients were relatively youthful, they were usually found to suffer from coagulation disorders and portal vein or superior mesenteric vein obstruction. As was the case in studies previously undertaken, most of our patients were of relatively advanced chronologic age, and suffered from pre-existing and underlying conditions and illnesses. None, however, suffered from any disease process associated with hyper-

coagulation. This condition could have been identified in one young patient #8 (diagnosed with superior mesenteric vein thrombosis) (Fig. 3).

Post-ischemic strictures have been reported on less often than post-traumatic ischemic strictures in case reports and in radiology research. Radiographic findings associated with post-ischemic strictures are similar to those that have been reported for post-traumatic ischemic strictures (5, 18-20). The mechanism of injury for the two types of ischemic stricture is similar, in that focal segmental ischemia develops at the mesentery and bowel wall (21). Reported post-traumatic ischemic strictures developed between one and eighteen weeks after trauma; this is similar to the findings in our study. Also similar to the findings in our study, post-traumatic ischemic strictures displayed thickened folds ("thumbprinting") on barium

study and most occurred as a single stricture measuring 5 to 10 centimeters in length. A few patients with post-traumatic ischemic strictures reportedly had very short (2 cm) and very long (18 cm) strictures, as well as multiple strictures. Most of the post-ischemic strictures evaluated in our study displayed concentric wall thickening (7/8, 87.5%) with high-grade or low-grade obstruction (8/8, 100%), although two previously reported cases revealed no proximal dilatation associated with the colonic post-traumatic stricture (18).

CT findings associated with post-ischemic stricture reflected the underlying pathology. Surgical specimens were available for five patients. Of the four patients for whom arterial and portal phase CT images were available (in addition to tissue samples), three patients (3/4, 75%) showed higher enhancement in portal phase than arterial phase, likely due to fibrosis and submucosal capillary dilatation. The radiographic findings associated with post-ischemic strictures mimicked those of various intestinal diseases such as Crohn's disease, NSAID-induced enteropathy and/or CMUSE (4). A previous report on strictures associated with Crohn's disease showed that it was relatively uncommon at the time of diagnosis. The inflammatory stricture showed layered enhancement during the parenchymal phase of MRI, and active inflammatory stenotic lesions were usually seen in combination with fistulas, abscesses, and the comb sign (vasa recta prominence) (22, 23). However, stricture in Crohn's disease is difficult to differentiate from post-ischemic strictures based on pathologic findings. The pathologic findings in five patients (with surgically resected specimens) in our study were found to be very similar to strictures associated with Crohn's disease: transmural inflammation, crypt distortion, submucosal fibrosis, and ulcer. There were no non-caseating granulomas associated with post-ischemic stricture in this study; however, more than half of the strictures associated with Crohn's disease do not contain non-caseating granulomas in the pathologic specimens (24, 25). Clinical and radiological findings could be used to differentiate between post-ischemic strictures and strictures associated with Crohn's disease. Patients with strictures associated with active Crohn's disease usually possess terminal ileum involvement, skipped areas, and more than one segment with inflammation (26). Patients with strictures associated with chronic Crohn's disease usually show other bowel sequelae such as pseudosacculation and antimesenteric border shortening.

Nonsteroidal anti-inflammatory drug-induced enteropathy or CMUSE usually presents as short segmental strictures (diaphragm-like stricture) (27-29). The post-ischemic strictures in our study possessed a longer length than those of the previously mentioned diseases (7.0 ± 3.8 cm), although the concentric wall thickening was similar. Patients with NSAID-induced enteropathy have a history of NSAID use. Most reported CMUSE patients possessed more than two strictures with a history of recurrent strictures.

There were several limitations to our study. First, this study could not completely exclude selection bias due to its retrospective nature. Cases with severe bowel ischemia could not avoid emergency surgery. Conversely, cases without significant obstruction might be overlooked. Second, our analyses included only a small sample of patients. However, post-ischemic stricture is so rare that limited case reports are available. This analysis of radiographic findings associated with post-ischemic strictures could be the beginning of research targeting the differentiation of post-ischemic strictures from other bowel diseases. Third, the CT protocol was heterogeneous in our study. Therefore, there were some limitations on assessment of the enhancement degree and presence of bowel obstruction objectively. Fourth, the frequency with which post-ischemic strictures may occur may be underestimated. According to one previous report of colon ischemia, about 12% of patients with severe colonic ischemia healed with stricture formation. Also, strictures might be reversible or irreversible, and characteristically lead to few obstructive symptoms (30). Therefore, patients with mild symptoms or reversible stricture might not be appropriately diagnosed. We included only those who had a CT scan at the time of ischemic bowel disease, and had pathologic or endoscopic confirmation of benign stricture of clearly post-ischemic stricture. In addition, those patients who had history of surgery or procedure, which can develop ischemic stricture, were excluded because these cases are not usually difficult to be differentiated from other inflammatory bowel diseases. Our aim is to identify CT findings associated with post-ischemic strictures which might be implemented to differentiate between that disease and other, similar bowel diseases (through patients with definite post-ischemic stricture). Our study does not reflect the exact frequency of post ischemic stricture.

In conclusion, post-ischemic stricture may develop in the ileum, jejunum, or colon within several weeks of an ischemic event. In the colon, strictures mainly develop

in the watershed zone. Typical CT findings to indicate the condition include a single area of concentric wall thickening of medium length, with moderate and higher contrast enhancement in portal phase than arterial phase and vasa recta prominence.

REFERENCES

- Longstreth GF, Yao JF. Epidemiology, clinical features, high-risk factors, and outcome of acute large bowel ischemia. *Clin Gastroenterol Hepatol* 2009;7:1075-1080.e1-e2; quiz 1023
- Medina C, Vilaseca J, Videla S, Fabra R, Armengol-Miro JR, Malagelada JR. Outcome of patients with ischemic colitis: review of fifty-three cases. *Dis Colon Rectum* 2004;47:180-184
- Takeuchi N, Naba K. Small intestinal obstruction resulting from ischemic enteritis: a case report. *Clin J Gastroenterol* 2013;6:281-286
- Kaido T, Kano M, Suzaki S, Yanagibashi K, Shiota M. Colon stenosis caused by old portal vein thrombosis. *Abdom Imaging* 2005;30:358-360
- Lee-Elliott C, Landells W, Keane A. Using CT to reveal traumatic ischemic stricture of the terminal ileum. *AJR Am J Roentgenol* 2002;178:403-404
- Lien GS, Mori M, Enjoji M. Delayed posttraumatic ischemic stricture of the small intestine. A clinicopathologic study of four cases. *Acta Pathol Jpn* 1987;37:1367-1374
- Yamazaki T, Shirai Y, Sakai Y, Hatakeyama K. Ischemic stricture of the rectosigmoid colon caused by division of the superior rectal artery below Sudeck's point during sigmoidectomy: report of a case. *Surg Today* 1997;27:254-256
- Chandra S, Dutta U, Das R, Vaiphei K, Nagi B, Singh K. Mesenteric venous thrombosis causing jejunal stricture: secondary to hypercoagulable states and primary portal hypertension. *Dig Dis Sci* 2002;47:2017-2019
- Narawane NM, Phadke AY, Shah SK, Bhandarkar PV, Abraham P. Jejunal stricture complicating acute mesenteric venous thrombosis secondary to protein C deficiency and factor V Leiden gene mutation. *Indian J Gastroenterol* 2000;19:79-80
- Yang J, Shen L, Zheng X, Zhu Y, Liu Z. Small bowel stricture complicating superior mesenteric vein thrombosis. *J Huazhong Univ Sci Technolog Med Sci* 2012;32:146-148
- Wittenberg J, Harisinghani MG, Jhaveri K, Varghese J, Mueller PR. Algorithmic approach to CT diagnosis of the abnormal bowel wall. *Radiographics* 2002;22:1093-1107; discussion 1107-1109
- Steward MJ, Punwani S, Proctor I, Adjei-Gyamfi Y, Chatterjee F, Bloom S, et al. Non-perforating small bowel Crohn's disease assessed by MRI enterography: derivation and histopathological validation of an MR-based activity index. *Eur J Radiol* 2012;81:2080-2088
- Krajewski K, Siewert B, Eisenberg RL. Colonic dilation. *AJR Am J Roentgenol* 2009;193:W363-W372
- Furukawa A, Kanasaki S, Kono N, Wakamiya M, Tanaka T, Takahashi M, et al. CT diagnosis of acute mesenteric ischemia from various causes. *AJR Am J Roentgenol* 2009;192:408-416
- Haraguchi M, Matsushima S, Fujie Y, Sugimachi K. Ischemic stricture of the jejunum--report of a case. *Jpn J Surg* 1990;20:715-719
- Eugène C, Valla D, Wesenfelder L, Fingerhut A, Bergue A, Merrer J, et al. Small intestinal stricture complicating superior mesenteric vein thrombosis. A study of three cases. *Gut* 1995;37:292-295
- Simi M, Pietroletti R, Navarra L, Leardi S. Bowel stricture due to ischemic colitis: report of three cases requiring surgery. *Hepatogastroenterology* 1995;42:279-281
- Hirota C, Iida M, Aoyagi K, Matsumoto T, Yao T, Fujishima M. Posttraumatic intestinal stenosis: clinical and radiographic features in four patients. *Radiology* 1995;194:813-815
- Loberant N, Szvalb S, Herskovits M, Cohen I, Salamon V. Posttraumatic intestinal stenosis: radiographic and sonographic appearance. *Eur Radiol* 1997;7:524-526
- De Backer AI, De Schepper AM, Vaneerdeweg W, Pelckmans P. Intestinal stenosis from mesenteric injury after blunt abdominal trauma. *Eur Radiol* 1999;9:1429-1431
- Reinus JF, Brandt LJ, Boley SJ. Ischemic diseases of the bowel. *Gastroenterol Clin North Am* 1990;19:319-343
- Zappa M, Stefanescu C, Cazals-Hatem D, Bretagnol F, Deschamps L, Attar A, et al. Which magnetic resonance imaging findings accurately evaluate inflammation in small bowel Crohn's disease? A retrospective comparison with surgical pathologic analysis. *Inflamm Bowel Dis* 2011;17:984-993
- Wibmer AG, Kroesen AJ, Gröne J, Buhr HJ, Ritz JP. Comparison of strictureplasty and endoscopic balloon dilatation for stricturing Crohn's disease--review of the literature. *Int J Colorectal Dis* 2010;25:1149-1157
- Schmitz-Moormann P, Pittner PM, Malchow H, Brandes JW. The granuloma in Crohn's disease. A bioptical study. *Pathol Res Pract* 1984;178:467-476
- Mazor Y, Karban A, Neshet S, Weiss B, Leshinsky-Silver E, Levine A, et al. Granulomas in Crohn's disease: are newly discovered genetic variants involved? *J Crohns Colitis* 2010;4:438-443
- Gore RM, Balthazar EJ, Ghahremani GG, Miller FH. CT features of ulcerative colitis and Crohn's disease. *AJR Am J Roentgenol* 1996;167:3-15
- Levi S, de Lacey G, Price AB, Gumpel MJ, Levi AJ, Bjarnason I. "Diaphragm-like" strictures of the small bowel in patients treated with non-steroidal anti-inflammatory drugs. *Br J Radiol* 1990;63:186-189
- Perlemuter G, Guillemin L, Legman P, Weiss L, Couturier D, Chaussade S. Cryptogenetic multifocal ulcerous stenosing enteritis: an atypical type of vasculitis or a disease mimicking vasculitis. *Gut* 2001;48:333-338
- Kohoutová D, Bures J, Tycová V, Bártová J, Tachecí I, Rejchrt S, et al. Severe cryptogenic multifocal ulcerous stenosing enteritis. A report of three cases and review of the literature. *Acta Medica (Hradec Kralove)* 2010;53:25-29
- Barbagelatta M. [Anatomic-pathologic diagnosis of ischemic colitis]. *J Chir (Paris)* 1997;134:97-102