

# Role of metformin in inhibiting estrogen-induced proliferation and regulating ER $\alpha$ and ER $\beta$ expression in human endometrial cancer cells

JINGBO ZHANG<sup>1\*</sup>, HUI XU<sup>1\*</sup>, XUEYAN ZHOU<sup>2</sup>, YANYU LI<sup>1</sup>, TONG LIU<sup>1</sup>, XIAOXING YIN<sup>2</sup> and BEI ZHANG<sup>1</sup>

<sup>1</sup>Department of Obstetrics and Gynecology, Xuzhou Central Hospital;

<sup>2</sup>School of Pharmacy, Xuzhou Medical College, Xuzhou, Jiangsu 221004, P.R. China

Received October 8, 2015; Accepted May 5, 2017

DOI: 10.3892/ol.2017.6877

**Abstract.** Diabetes mellitus (DM) is an important factor that contributes to the development of type I endometrial cancer (EC). Previous studies have demonstrated that metformin decreases mortality and risk of neoplasms in patients with DM. Since estrogen and estrogen receptor (ER) expression has been associated with the development of EC, the present study aimed to investigate the effects of metformin on cell proliferation and ER expression in EC cell lines that are sensitive to estrogen. The viability and proliferation of Ishikawa and HEC-1-A cells were measured following treatment with metformin and/or a 5' AMP-activated protein kinase (AMPK) inhibitor (compound C) with or without treatment with estradiol (E2). In addition, the levels of ER $\alpha$ , ER $\beta$ , AMPK, ribosomal protein S6 kinase  $\beta$ -1 (p70S6K), myc proto-oncogene protein (c-myc) and proto-oncogene c-fos (c-fos) were measured following treatment. Metformin significantly decreased E2-stimulated cell proliferation; an effect that was rescued in the presence of compound C. Metformin treatment markedly increased the phosphorylation of AMPK while decreasing p70S6K phosphorylation, indicating that metformin exerts its effects through stimulation of AMPK and subsequent inhibition of the mammalian target of rapamycin (mTOR) signaling pathway. In addition, metformin significantly inhibited ER $\alpha$  expression while increasing ER $\beta$  expression, whereas treatment with compound C reversed these effects. Reverse

transcription-quantitative polymerase chain reaction analysis demonstrated that c-fos and c-myc expression were attenuated by metformin, an effect that was rescued in the presence of compound C. Therefore, metformin regulates the expression of ERs, and inhibits estrogen-mediated proliferation of human EC cells through the activation of AMPK and subsequent inhibition of the mTOR signaling pathway.

## Introduction

Endometrial cancer (EC) is the fourth most common cancer in women worldwide and is the most common type of gynecological cancer (1). Patients with high estrogen levels are at increased risk of developing EC since estrogen exhibits growth-promoting properties in EC cells. Thus, estrogen serves as a tumor initiator, since it directly induces DNA mutations in tumor-suppressor genes and oncogenes (2). Upon binding to its receptor, estrogen triggers the transcription of a number of genes. There are two classes of estrogen receptor (ER), ER $\alpha$  and ER $\beta$ , which are encoded by the estrogen receptor 1 (ESR1) and ESR2 genes, bind to the same estrogen response elements (EREs) and regulate similar sets of genes (3). However, during the early stages of EC, the expression of ER $\alpha$  is increased compared with that of ER $\beta$  (4,5), which activates ER $\alpha$  upon estradiol (E2) binding. This stimulates the expression of estrogen target genes and leads to enhanced proliferation of the previously transformed cells, while causing additional errors in replication and potentially further DNA mutations (2).

Previous studies have demonstrated that EC is associated with a shift in the ratio of the two ER subtypes (4,6,7). In the classical model, estrogen regulates the downstream expression of genes by binding to ER and stimulating subsequent receptor dimerization and nuclear translocation (8-10). At the transcriptional level, estrogen regulates the expression of estrogen-responsive genes by binding to ER in the nucleus. In a number of target cells, ER regulates cell growth and differentiation by stimulating the transcription of proto-oncogene c-fos (c-fos), myc proto-oncogene protein (c-myc) and other proto-oncogenes (11).

Metformin, a biguanide compound, has been demonstrated to be effective in the treatment of polycystic ovarian syndrome, diabetes mellitus (DM) and insulin resistance (12).

---

*Correspondence to:* Professor Bei Zhang, Department of Obstetrics and Gynecology, Xuzhou Central Hospital, 199 Jiefang South Street, Xuzhou, Jiangsu 221009, P.R. China  
E-mail: bettyzhang10@163.com

\*Contributed equally

*Abbreviations:* Met, metformin; EC, endometrial cancer; ER, estrogen receptor; E2, estradiol; AMPK, 5' AMP-activated protein kinase; Com, compound C; Con, control

*Key words:* endometrial cancer, estrogen receptor, metformin, 5' AMP-activated protein kinase

Metformin exhibits chemopreventive and anti-proliferative effects in a number of cancer types, including ovarian and breast cancer (13,14). In addition, application of metformin has been demonstrated to be significantly associated with a decrease in the incidence of cancer (15). Previous studies have reported that metformin inhibits cell proliferation and induces apoptosis in EC cell lines (16), in addition to inhibiting cell growth by non-insulin- and insulin-dependent mechanisms. Metformin regulates systemic insulin levels by increasing insulin receptor sensitivity and uptake (17). Metformin inhibits cell proliferation via liver kinase B1-mediated activation of 5' AMP-activated protein kinase (AMPK) and reduction in mammalian target of rapamycin (mTOR) signaling (18). Activation of AMPK inhibits the mTOR signaling pathway, thereby regulating multiple signaling pathways involved in cell proliferation (19).

As previously reported, hypertension, DM and obesity are high risk factors for developing EC, with insulin resistance as a common pathophysiological basis (12). Estrogen and insulin have been demonstrated to be important risk factors leading to the development of EC (20). In non-diabetic patients with breast cancer, metformin has been demonstrated to decrease circulating estrogen levels (21). Markowska *et al* (22) demonstrated that the expression of ER was decreased in patients with EC and type 2 DM (DM2) receiving metformin compared with that in patients treated with insulin. However, the molecular mechanism underlying the effect of metformin on ER expression remains unclear. Metformin may inhibit the proliferation of human EC cells by regulating the expression of ER and estrogen-responsive genes, thereby altering the sensitivity of cells towards estrogen. To test this hypothesis, in the present study, the anti-neoplastic activity of metformin in EC, and the role of metformin in the expression of ER and estrogen-responsive genes were investigated *in vitro*. In addition, the underlying molecular mechanisms of the effects of metformin on EC cells were identified.

## Materials and methods

**Cell culture and reagents.** The EC cell lines Ishikawa (differentiated) and HEC-1-A (poorly differentiated) were purchased from The Cell Bank of Type Culture Collection of Chinese Academy of Sciences (Shanghai, China). The cell lines were maintained in RPMI-1640 (Thermo Fisher Scientific, Inc., Waltham, MA, USA) and McCoy's 5A (Sigma-Aldrich; Merck KGaA, Darmstadt, Germany) medium containing 10% fetal bovine serum (FBS; Thermo Fisher Scientific, Inc.) in a humidified incubator with 5% CO<sub>2</sub> at 37°C. The cells were passaged every 3-5 days. Metformin and estradiol (E2) were purchased from Sigma-Aldrich; Merck KGaA. Compound C (AMPK inhibitor) was purchased from Santa Cruz Biotechnology, Inc. (Dallas, TX, USA). Primers were purchased from Sangon Biotech Co., Ltd. (Shanghai, China). The 5'-bromo-2'-deoxyuridine (BrdU) cell proliferation ELISA assay was obtained from Roche Molecular Diagnostics (Branchburg, NJ, USA). A bicinchoninic acid protein assay kit was obtained from Pierce (Thermo Fisher Scientific, Inc.). The anti-ER $\alpha$  (cat. no. BS6424), anti-ER $\beta$  (cat. no. BS8465), anti-phosphorylated (p)-AMPK (cat. no. BS4457P), anti-AMPK (cat. no. BS4457), anti-phospho-S6K (cat. no. BS4440P) and anti-S6K (cat. no. BS4440) antibodies

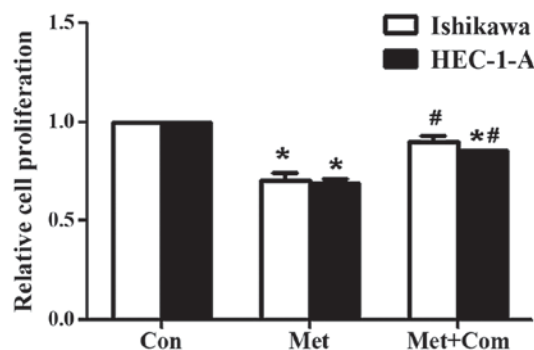


Figure 1. Compound C rescues the anti-proliferative effect induced by metformin. Ishikawa and HEC-1-A cells were pre-treated with compound C for 24 h prior to incubation with metformin for 24 h. Proliferation was assessed using 5'-bromo-2'-deoxyuridine assays. Results represent the mean  $\pm$  standard error of the mean of triplicate samples and are representative of three independent experiments. \*P<0.05 compared with the control group. #P<0.05 compared with the Met group. Con, control; Met, 5 mM metformin; Met + Com, 5 mM metformin combined with pre-treatment with 5  $\mu$ M compound C.

were purchased from Bioworld Technology, Inc. (St. Louis Park, MN, USA).

**BrdU assays for E2 and metformin.** A BrdU ELISA kit was used to measure the effects of exposure of cells to estrogen (10<sup>-6</sup> M) and/or metformin (5 mM) in the presence or absence of compound C (5  $\mu$ M). The Ishikawa and HEC-1-A cell lines were plated on 96-well plates at a concentration of 8x10<sup>3</sup> cells/well. After 24 h, the cells were serum-starved for an additional 24 h and subsequently treated with E2 (10<sup>-6</sup> M) in the presence or absence of metformin (5 mM) for 24 h at 37°C. To analyze the role of AMPK, cells were pre-treated with compound C (5  $\mu$ M) for 24 h at 37°C prior to treatment with metformin and/or E2. The effect of metformin and estradiol was calculated as a percentage of the viability of control cells (cultured with medium without FBS) seeded in 96-well plates. Serum-free conditions were used for all the assays and tests. An immunoassay was performed to monitor the synthesis of DNA based on the incorporation of BrdU into the DNA as follows: Upon treatment with the aforementioned compounds, the cells were incubated with 10  $\mu$ l/well BrdU labeling solution at 37°C (10  $\mu$ M) for 24 h. Prior to incubation for 30 min at room temperature, the labeling medium was removed and 200  $\mu$ l/well FixDenat (BioVision, Inc., Milpitas, CA, USA) was added. Subsequently, the cells were incubated for 30 min at room temperature and FixDenat solution was removed, and the cells were incubated with 100  $\mu$ l/well anti-BrdU-peroxidase solution for 90 min at 37°C. Following the incubation, the antibody conjugate was removed and the cells were rinsed three times with 200  $\mu$ l/well washing solution. The washing solution was then removed, 100  $\mu$ l/well substrate solution was added and the cells were incubated at room temperature for 30 min. The absorbance of samples was measured at 490 nm. Each experiment was performed in triplicate and repeated three times to ensure the consistency of the results.

**Reverse transcription-quantitative polymerase chain reaction (RT-qPCR).** Ishikawa and HEC-1-A cells were plated at a concentration of 10<sup>5</sup> cells/well in 6-well plates for 24 h at 37°C and subsequently treated with metformin (0, 1, 5 and 15 mM)

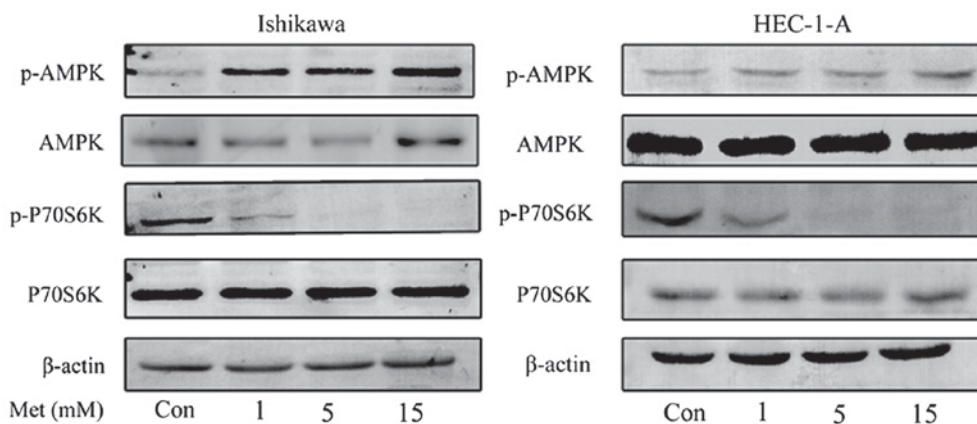


Figure 2. Metformin activates AMPK and inhibits the mammalian target of rapamycin signaling pathway in the Ishikawa and HEC-1-A cell lines. Western blot analysis of p-AMPK, AMPK, p-p70S6K and p70S6K protein levels following treatment with the indicated concentrations of metformin for 24 h. Results are representative of three independent experiments. AMPK, 5' AMP-activated protein kinase; p70S6K, ribosomal protein S6 kinase  $\beta$ -1; p, phosphorylated; Con, control; Met, metformin.

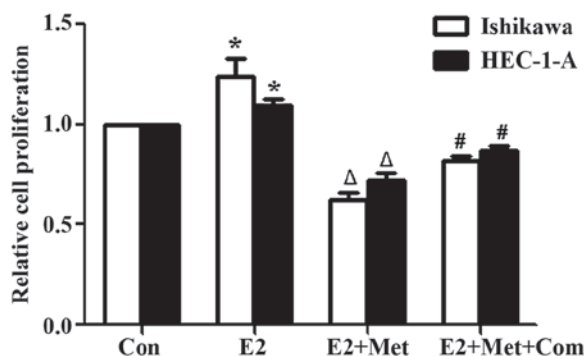


Figure 3. Compound C rescues the anti-proliferative effects induced by metformin following E2 stimulation. 5'-bromo-2'-deoxyuridine assay results in Ishikawa and HEC-1-A cells following treatment with E2, E2 and metformin or E2, metformin and pre-treatment with compound C for 24 h. Cells were incubated with metformin and/or E2 for 24 h with or without pre-treatment with compound C for 24 h. Results represent the mean  $\pm$  standard error of the mean of triplicate samples and are representative of three independent experiments. \* $P < 0.05$ , E2 group compared with control.  $\Delta P < 0.05$ , E2 + Met group compared with the E2 group. # $P < 0.05$ , E2 + Met + Com group compared with the E2 + Met group. Con, control; E2,  $10^{-6}$  M 17 $\beta$ -estradiol; E2 + Met,  $10^{-6}$  M 17 $\beta$ -estradiol combined with 5 mM metformin; E2 + Met + Com,  $10^{-6}$  M 17 $\beta$ -estradiol combined with 5 mM metformin and pre-treatment with 5  $\mu$ M compound C.

in McCoy's 5A or RPMI-1640 medium containing 5% FBS, respectively, for 24 h at 37°C. In addition, to assess the role of AMPK on ER expression, cells were treated with metformin (5 mM) with or without pre-treatment with compound C (5  $\mu$ M) for 24 h. Total RNA was extracted from the cells using TRIzol reagent (Invitrogen; Thermo Fisher Scientific, Inc.) according to the manufacturer's protocol. The RNA samples were subjected to DNase I (TIANGEN Biotech Co., Ltd., Beijing, China) digestion to avoid possible genomic DNA contamination and were reverse transcribed with oligo-dT primers (Qiagen GmbH, Hilden, Germany) and Moloney murine leukemia virus reverse transcriptase (Promega Corporation, Madison, WI, USA). Reactions were performed using LightCycler 480 SYBR-Green I PCR Mastermix (Roche Diagnostics, Indianapolis, IN, USA) in a 20- $\mu$ l reaction, containing 1  $\mu$ l cDNA, 8.2  $\mu$ l DNase/RNase-free deionized

water, 10  $\mu$ l SYBR-Green I Mastermix and 0.4  $\mu$ l each primer (10  $\mu$ M). Primer sequences are as follows: ER $\alpha$  forward, 5'-AGTGCCTTGTGGATGCTG-3' and reverse, 5'-TGCCAG GTTGGTCAGTAAGC-3'; ER $\beta$  forward, 5'-AGTCCCTGG TGTGAAGCAAG-3' and reverse, 5'-TGAGCATCCCTCTTT GAACC-3'; c-myc forward, 5'-CCTCCACTCGGAAGGACT ATC-3' and reverse, 5'-TTCGCCTCTTGACATTCTCC-3'; c-fos forward, 5'-ACTACCACTCACCCGCAGAC-3' and reverse, 5'-GGAATGAAGTTGGCACTGGA-3'; and GAPDH forward, 5'-CAGTCAGCCGCATCTTCTTTT-3' and reverse, 5'-GTGACCAGGCGCCCAATAC-3'. The cycling conditions for PCR were as follows: 95°C for 30 sec, followed by 40 cycles (two steps) of 95°C for 5 sec and 60°C for 31 sec. PCR was performed in triplicate for each sample on an ABI 7500 Real Time PCR Instrument (Applied Biosystems; Thermo Fisher Scientific, Inc.) to detect the fluorescent signals. The accumulation of PCR product was determined as the increase in SYBR-Green fluorescence. The mRNA levels of ER $\alpha$ , ER $\beta$ , c-myc and c-fos were normalized to GAPDH. The relative mRNA levels were compared and expressed as the ratio to the control groups (23).

**Western blot analysis.** Cells were plated at a density of  $2 \times 10^5$  cells/well in 6-well plates for 24 h. To determine the change in the expression of ER $\alpha$  and ER $\beta$ , the plated cell lines were treated with metformin (0, 5 and 15 mM) with or without compound C (5  $\mu$ M) in RPMI-1640 or McCoy's 5A medium containing 5% FBS for 24 h. The p-AMPK/AMPK and p-p70S6K/p70S6K protein levels were detected to investigate the relevant signaling targets. Radioimmunoprecipitation assay buffer, containing 1% NP-40, 0.5% sodium deoxycholate and 0.1% SDS, was used for the preparation of cell lysates. Protein extracts (20  $\mu$ g) were subjected to 10% SDS-PAGE, subsequently transferred to polyvinylidene fluoride membranes and blocked in 5% non-fat milk in 10 mM Tris, pH 7.5, 100 mM NaCl and 0.1% Tween-20 for 1 h at room temperature. The membranes were subsequently incubated with the aforementioned primary antibodies (dilution, 1:1,000; Bioworld Technology, Inc.) overnight at 4°C. The membrane was subsequently incubated with a secondary horseradish

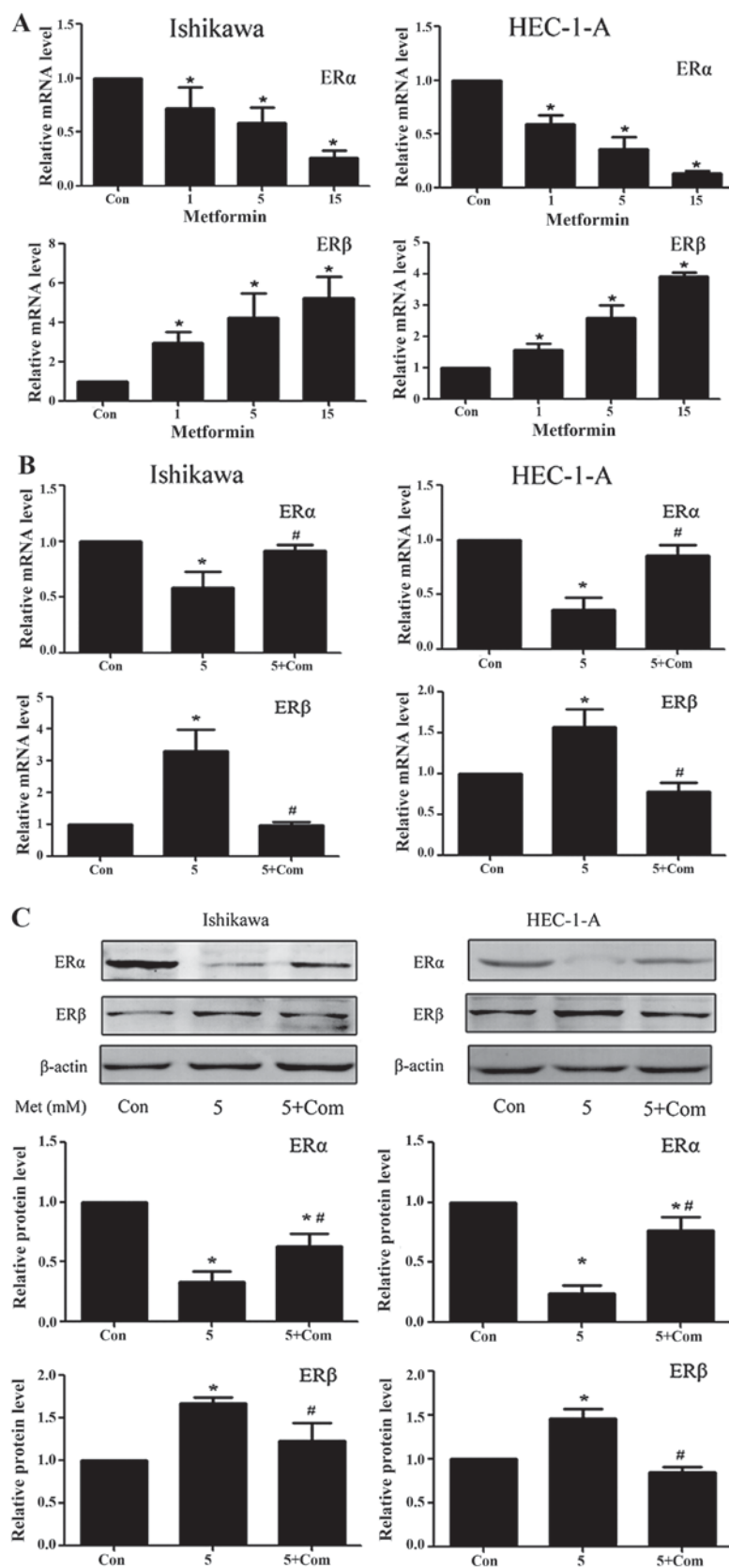


Figure 4. Metformin downregulates ER $\alpha$  and upregulates ER $\beta$  expression in Ishikawa and HEC-1-A cells in an AMPK-dependent manner. Reverse transcription-quantitative polymerase chain reaction analysis of ER $\alpha$  and ER $\beta$  expression in Ishikawa and HEC-1-A cells following treatment with (A) metformin (0, 1, 5 or 15 mM) or (B) 5 mM metformin pre-treatment with or without 5  $\mu$ M compound C for 24 h. ER $\alpha$  and ER $\beta$  mRNA levels in each sample were calculated from a standard curve and normalized using GAPDH mRNA levels. Results represent the mean  $\pm$  standard error of the mean of three independent experiments, each performed in triplicate (C) Western blot analysis of ER $\alpha$  and ER $\beta$  expression in Ishikawa and HEC-1-A cells following treatment with metformin (5 mM) and/or pre-treatment with compound C (5  $\mu$ M) for 24 h.  $\beta$ -actin was used as a loading control. Results represent the mean  $\pm$  standard error of the mean of three independent experiments. \* $P$ <0.05 compared with control. # $P$ <0.05, 5+ Com group compared with the 5 mM metformin group. Con, control; 5, 5 mM metformin; 5+ Com, 5 mM metformin combined with pre-treatment with 5  $\mu$ M compound C; Met, metformin; ER, estrogen receptor; AMPK, 5' AMP-activated protein kinase.



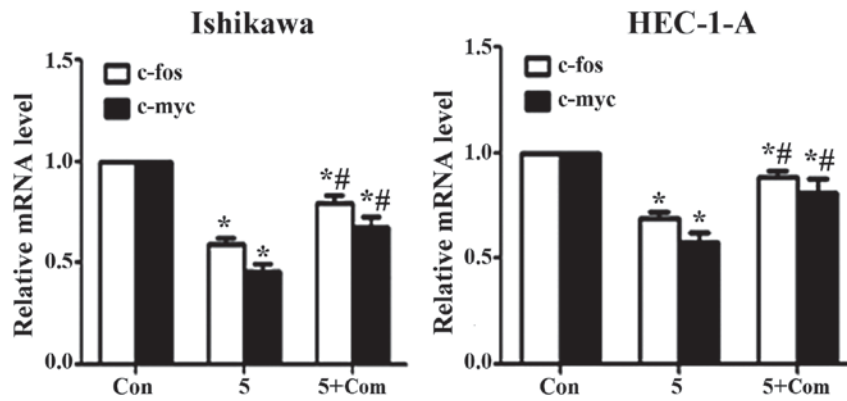


Figure 5. Compound C rescues the effects of metformin on c-fos and c-myc expression in Ishikawa and HEC-1-A cells. Reverse transcription-quantitative polymerase chain reaction analysis of c-fos and c-myc expression in Ishikawa and HEC-1-A cells following treatment with metformin (5 mM) for 24 h in the presence or absence of pre-treatment with compound C (5  $\mu$ M) for 24 h. The c-fos and c-myc mRNA levels in each sample were calculated from a standard curve and normalized using GAPDH mRNA levels. Results represent the mean  $\pm$  standard error of the mean of three independent experiments, each performed in triplicate. \* $P < 0.05$  compared with control. # $P < 0.05$ , 5+ Com group compared with the 5 mM metformin group. Con, control; 5, 5 mM metformin; 5+ Com, 5 mM metformin combined with pre-treatment with 5  $\mu$ M compound C; c-fos, proto-oncogene c-fos; c-myc, myc proto-oncogene protein.

peroxidase-linked antibody (cat. no. 7074; dilution, 1:2,000; Cell Signaling Technology, Inc., Danvers, MA, USA) for 2 h following washing three times with PBS-Tween-20 for 5 min. Bands were visualized using enhanced chemiluminescence reagents (SuperSignal™ West Pico PLUS Chemiluminescent Substrate; cat. no. 34580), according to the manufacturer's protocol (Pierce; Thermo Fisher Scientific, Inc.). Membranes were subsequently stripped and re-probed using a primary antibody against  $\beta$ -actin (cat. no. AP0060; dilution, 1:1,000; Cell Signaling Technology, Inc.), pan-S6K (cat. no. BS4440; dilution, 1:1,000; Bioworld Technology, Inc.) or pan-AMPK (cat. no. BS4457; dilution, 1:1,000; Bioworld Technology, Inc.) to establish equal loading. The relative protein levels were normalized to  $\beta$ -actin and were expressed as the ratio to the non-treatment control groups. Densitometry with Quantity One® 1-D Analysis Software (version 4.6.9 for PC; Bio-Rad Laboratories, Inc., Hercules, CA, USA) was used for the quantification of protein bands, including  $\beta$ -actin.

**Statistical analysis.** Data are presented as the mean  $\pm$  standard error of the mean. One-way analysis of variance was used for statistical analyses and was performed using SPSS software (version 13.0; SPSS, Inc., Chicago, IL, USA). The data between the two groups were compared using the least significant difference test.  $P < 0.05$  was considered to indicate a statistically significant difference.

## Results

**Compound C rescues the decrease in cell proliferation induced by metformin.** A previous study from our group demonstrated that metformin significantly decreases the viability of Ishikawa and HEC-1-A cells in a time- and dose-dependent manner (24). Compound C has been identified as an adenosine triphosphate-competitive AMPK inhibitor (25). In the present study, treatment with metformin significantly decreased cell proliferation in HEC-1-A and Ishikawa cells compared with that in the control groups ( $P < 0.05$ ; Fig. 1), as measured using a BrdU assay. However, pre-treatment of Ishikawa and HEC-1-A cells

with compound C significantly rescued the decrease in cell proliferation induced by metformin ( $P < 0.05$ ; Fig. 1).

**Metformin inhibits cell proliferation through the activation of AMPK.** The effects of metformin on the mTOR signaling pathway were characterized in order to investigate the underlying molecular mechanisms of the anti-proliferative effects of metformin. Western blot analysis demonstrated that metformin induced the phosphorylation of AMPK in HEC-1-A and Ishikawa cells in a dose-dependent manner (Fig. 2). Previous studies have demonstrated that p70S6K is a downstream target of the mTOR signaling pathway (18,26). Metformin markedly inhibited the phosphorylation of p70S6K following 24 h of treatment; however, the effect of metformin on AMPK and p70S6K expression were not statistically significant. This suggests that metformin exhibits its anti-proliferative effect by activating AMPK and inhibiting the phosphorylation of p70S6K, which in turn results in the inhibition of the mTOR signaling pathway.

**Inhibition of metformin attenuates the estrogen-mediated proliferation of EC cells.** To establish the role of metformin in attenuating the estrogen-mediated proliferation of EC cells, Ishikawa and HEC-1-A cells were pre-treated with compound C for 24 h, and incubated with metformin and E2 for 24 h prior to performing a BrdU assay to assess cell proliferation. E2 significantly increased the proliferation of Ishikawa and HEC-1-A cells in comparison with that of the control group ( $P < 0.05$ ; Fig. 3). Co-treatment of cells with E2 and metformin significantly decreased cell proliferation compared with that of the E2 alone group ( $P < 0.05$ ). However, cell proliferation was significantly rescued when cells were pre-treated with compound C for 24 h ( $P < 0.05$ , comparing the E2 + Met + Com group with the E2 + Met group).

**Regulation of ER $\alpha$  and ER $\beta$  expression levels in the Ishikawa and HEC-1-A cell lines.** Previous studies from our group have demonstrated that metformin significantly downregulates ER $\alpha$  and upregulates ER $\beta$  protein levels in Ishikawa and HEC-1-A cells (24). RT-qPCR results from the present study

demonstrated that, following treatment with metformin for 24 h, the ER $\alpha$  and ER $\beta$  mRNA levels in Ishikawa and HEC-1-A cells were significantly decreased and increased, respectively ( $P < 0.05$ ; Fig. 4A). Western blot analysis and RT-qPCR data from the present study suggest that metformin exhibits a regulatory effect on ER protein and mRNA levels. However, the regulatory effect of metformin on ER expression was rescued by pre-treatment with compound C at the mRNA and protein level ( $P < 0.05$ ; Fig. 4B and C).

*Effect of metformin on c-fos and c-myc mRNA levels.* Treatment of Ishikawa and HEC-1-A cells with metformin significantly decreased the expression of c-fos and c-myc at the mRNA level ( $P < 0.05$ ; Fig. 5); however, the effect of metformin was reversed when cells were pre-treated with compound C prior to metformin addition ( $P < 0.05$ ).

## Discussion

A previous study from our group demonstrated the roles of metformin and estrogen in inhibiting and promoting the proliferation of EC cells (24). The results from the present study demonstrate the role of metformin in regulating ER expression; metformin significantly increased ER $\alpha$  while significantly decreasing ER $\beta$  expression at the mRNA and protein level in Ishikawa and HEC-1-A cells. In addition, metformin significantly inhibited the expression of c-fos and c-myc at the mRNA level. However, the molecular mechanisms underlying this regulation remain unclear.

Although its etiology remains unclear, previous studies have demonstrated the role of endocrine and genetic factors in its initiation and progression (27). According to a number of epidemiological studies, EC is associated with chronic exposure to high levels of estrogen (28). In addition, abnormalities in glucose and insulin levels are associated with EC (29).

A previous study demonstrated that metformin decreases the neoplastic proliferation of cells by modulating glucose metabolism, insulin sensitivity and intracellular signaling pathways (12). Data from the present study demonstrated that metformin inhibits the proliferation of EC cell lines; an effect that is reversible with pre-treatment with compound C, an AMPK inhibitor. Metformin treatment resulted in the activation of AMPK and its immediate downstream target, p70S6K. These results suggest that metformin exerts its effects through the mTOR signaling pathway and reveal a potential molecular mechanism for its antitumor effects on EC. These results are consistent with those from previous studies on ovarian, colon and prostate cancer cell lines (30,31).

It has previously been demonstrated that estrogen serves a critical role in the progression and development of EC (32,33). Previous studies have reported that women treated with metformin (1,500 mg/day) exhibit a significant reduction in E2 levels (-38%;  $P = 0.02$ ) and a borderline significant reduction in estrone (-10%;  $P = 0.06$ ) (21). Similar results were obtained in a randomized study in obese postmenopausal female patients with a history of polycystic ovary syndrome and/or insulin resistance (34); treatment with metformin (2,000 mg/day) resulted in a significant reduction in E2 levels (-27%). Additionally, metformin may decrease the concentration of estrogen in neoplastic tissue by locally inhibiting

aromatase activity and suppressing the synthesis of the enzyme by interacting with its promoter, PII (35).

Estrogen has been demonstrated to promote the proliferation of EC cell lines. Results from the present study revealed that metformin attenuates the effect of E2 on the proliferation of EC cells. In addition, compound C rescued the anti-proliferative effect of metformin. Erdemoglu *et al* (36) demonstrated that metformin reduces estrogen-induced endometrial hyperplasia by inhibiting mTOR-mediated S6K1 activation, which acts as a potent regulator of protein synthesis and growth. Therefore, the metformin-induced attenuation of the effect of E2 on cell proliferation may be attributed to the activation of AMPK followed by the inhibition of the mTOR signaling pathway.

Estrogen-induced regulation of cell proliferation occurs via the ER $\alpha$  and ER $\beta$  isoforms. Estrogen and ERs serve critical roles in the initiation and development of EC (37). ER $\alpha$  is associated with estrogen-induced mitogenic signaling, whereas the function of ER $\beta$  is opposite to that of ER $\alpha$  (38). In the human mammary gland, E2 binds to ER isoforms, thereby regulating the proliferation and differentiation of cells (39). The E2-ER $\alpha$  complex functions as a regulator of the transcription of genes involved in the proliferation, differentiation and survival of cells. In various types of cancer, ER $\beta$  serves a critical role in inhibiting the ER $\alpha$ -mediated transcription and E2-induced proliferation of cells (38,40). Furthermore, in normal mammary epithelial cells, ER $\alpha$  and ER $\beta$  differentially regulate proliferation and apoptosis (41). The ER $\alpha$ /ER $\beta$  ratio has been reported to be a key element in modulating the activity of E2 in breast cancer cells (42). Markowska *et al* (22) reported a significant decrease in the expression of ER in female patients with DM2 and EC following administration of metformin compared with that in patients treated with insulin ( $P = 0.004$ ). However, the study did not demonstrate the effects of metformin on ER subtypes.

The data from the present study demonstrate that metformin reduces the expression of ER $\alpha$  while promoting the expression of ER $\beta$ , which may be associated with the activation of AMPK. Therefore, the regulation of ER subtype expression following metformin treatment may affect cell proliferation and influence the prognosis of patients with EC. However, further studies are required to validate this hypothesis.

Studies on breast cancer cells (43) and rat uterus (44) have demonstrated estrogen-induced induction of c-fos, c-myc and N-myc proto-oncogene protein. In mammalian uterus, estrogen induces the expression of c-fos (45), c-myc (46) and c-jun (47). In addition, metformin acts as a chemopreventive agent by downregulating the expression of c-myc to restrict the initiation and transformation of prostatic neoplasia (48). According to Zhang *et al* (17), metformin treatment attenuates the estrogen-dependent proliferation of c-myc and c-fos expression in the endometrium of obese rats compared with that in untreated controls. The findings from the present study indicate that metformin treatment results in reduced expression of c-myc and c-fos *in vitro*. Metformin treatment activated the AMPK signaling pathway and concomitantly downregulated the expression of c-myc and c-fos. It has previously been demonstrated that metformin reduces the expression of c-myc in breast tumors (49) and prostatic neoplasia (48) by activating AMPK. According to Dang (50), c-myc and c-fos oncogenes are critical in the tumorigenesis of a number of human cancers.

In conclusion, the results from the present study indicate that metformin inhibits the proliferation of EC cells through the activation of AMPK and subsequent inhibition of the mTOR signaling pathway. Further studies are required to identify the role of metformin as chemopreventive agent in populations with a high risk of cancer.

## References

- Fader AN, Arriba LN, Frasure HE and von Gruenigen VE: Endometrial cancer and obesity: Epidemiology, biomarkers, prevention and survivorship. *Gynecol Oncol* 114: 121-127, 2009.
- Rižner T: Estrogen biosynthesis, phase I and phase II metabolism, and action in endometrial cancer. *Mol Cell Endocrinol* 381: 124-139, 2013.
- Klinge CM: Estrogen receptor interaction with estrogen response elements. *Nucleic Acids Res* 29: 2905-2919, 2001.
- Sakaguchi H, Fujimoto J, Aoki I, Toyoki H, Khatun S and Tamaya T: Expression of oestrogen receptor alpha and beta in uterine endometrial and ovarian cancers. *Eur J Cancer* 38 (Suppl 6): S74-S75, 2002.
- Utsunomiya H, Suzuki T, Harada N, Ito K, Matsuzaki S, Konno R, Sato S, Yajima A and Sasano H: Analysis of estrogen receptor alpha and beta in endometrial carcinomas: Correlation with ER beta and clinicopathologic findings in 45 cases. *Int J Gynecol Pathol* 19: 335-341, 2000.
- Hu K, Zhong G and He F: Expression of estrogen receptors ERalpha and ERbeta in endometrial hyperplasia and adenocarcinoma. *Int J Gynecol Cancer* 15: 537-541, 2005.
- Saegusa M and Okayasu I: Changes in expression of estrogen receptors alpha and beta in relation to progesterone receptor and pS2 status in normal and malignant endometrium. *Jpn J Cancer Res* 91: 510-518, 2000.
- Bolton JL and Thatcher GR: Potential mechanisms of estrogen quinone carcinogenesis. *Chem Res Toxicol* 21: 93-101, 2008.
- Hammes SR and Levin ER: Minireview: Recent advances in extranuclear steroid receptor actions. *Endocrinology* 152: 4489-4495, 2011.
- Prossnitz ER and Barton M: The G-protein-coupled estrogen receptor GPER in health and disease. *Nat Rev Endocrinol* 7: 715-726, 2011.
- Yamashita S, Takayanagi A and Shimizu N: Temporal and cell-type specific expression of c-fos and c-jun protooncogenes in the mouse uterus after estrogen stimulation. *Endocrinology* 137: 5468-5475, 1996.
- Björge T, Lukanova A, Jonsson H, Tretli S, Ulmer H, Manjer J, Stocks T, Selmer R, Nagel G, Almquist M, *et al*: Metabolic syndrome and breast cancer in the me-can (metabolic syndrome and cancer) project. *Cancer Epidemiol Biomarkers Prev* 19: 1737-1745, 2010.
- Del Barco S, Vazquez-Martin A, Cufi S, Oliveras-Ferraro C, Bosch-Barrera J, Joven J, Martin-Castillo B and Menendez JA: Metformin: Multi-faceted protection against cancer. *Oncotarget* 2: 896-917, 2011.
- Dowling RJ, Goodwin PJ and Stambolic V: Understanding the benefit of metformin use in cancer treatment. *BMC Med* 9: 33, 2011.
- Rocha GZ, Dias MM, Ropelle ER, Osório-Costa F, Rossato FA, Vercesi AE, Saad MJ and Carvalheira JB: Metformin amplifies chemotherapy-induced AMPK activation and antitumoral growth. *Clin Cancer Res* 17: 3993-4005, 2011.
- Cantrell LA, Zhou C, Mendivil A, Malloy KM, Gehrig PA and Bae-Jump VL: Metformin is a potent inhibitor of endometrial cancer cell proliferation-implications for a novel treatment strategy. *Gynecol Oncol* 116: 92-98, 2010.
- Zhang Q, Celestino J, Schmandt R, McCampbell AS, Urbauer DL, Meyer LA, Burzawa JK, Huang M, Yates MS, Iglesias D, *et al*: Chemopreventive effects of metformin on obesity-associated endometrial proliferation. *Am J Obstet Gynecol* 209: 24.e1-24.e12, 2013.
- Dowling RJ, Zakikhani M, Fantus IG, Pollak M and Sonenberg N: Metformin inhibits mammalian target of rapamycin-dependent translation initiation in breast cancer cells. *Cancer Res* 67: 10804-10812, 2007.
- Viollet B, Guigas B, Sanz Garcia N, Leclerc J, Foretz M and Andreelli F: Cellular and molecular mechanisms of metformin: An overview. *Clin Sci (Lond)* 122: 253-270, 2012.
- Esteve FJ, Moulder SL, Gonzalez-Angulo AM, Ensor J, Murray JL, Green MC, Koenig KB, Lee MH, Hortobagyi GN and Yeung SC: Phase I trial of exemestane in combination with metformin and rosiglitazone in nondiabetic obese postmenopausal women with hormone receptor-positive metastatic breast cancer. *Cancer Chemother Pharmacol* 71: 63-72, 2013.
- Campagnoli C, Berrino F, Venturelli E, Abbà C, Biglia N, Brucato T, Cogliati P, Danese S, Donadio M, Zito G and Pasanisi P: Metformin decreases circulating androgen and estrogen levels in nondiabetic women with breast cancer. *Clin Breast Cancer* 13: 433-438, 2013.
- Markowska A, Pawłowska M, Filas V, Korski K, Gryboś M, Sajdak S, Olejek A, Bednarek W, Spiewankiewicz B, Lubin J and Markowska J: Does Metformin affect ER, PR, IGF-1R,  $\beta$ -catenin and PAX-2 expression in women with diabetes mellitus and endometrial cancer? *Diabetol Metab Syndr* 5: 76, 2013.
- Xie Y, Wang YL, Yu L, Hu Q, Ji L, Zhang Y and Liao QP: Metformin promotes progesterone receptor expression via inhibition of mammalian target of rapamycin (mTOR) in endometrial cancer cells. *J Steroid Biochem Mol Biol* 126: 113-120, 2011.
- Zhang J, Zhang B, Yin Z, Chen F, Liu T, Xu H, Liu Y and Zhou X: Effects of metformin on the estrogen-induced proliferation and the expression of ER in human endometrial cancer cells. *Zhonghua Fu Chan Ke Za Zhi* 49: 932-937, 2014 (In Chinese).
- Emerling BM, Viollet B, Tormos KV and Chandel NS: Compound C inhibits hypoxic activation of HIF-1 independent of AMPK. *FEBS Lett* 581: 5727-5731, 2007.
- Jefferies HB, Fumagalli S, Dennis PB, Reinhard C, Pearson RB and Thomas G: Rapamycin suppresses 5'TOP mRNA translation through inhibition of p70s6k. *EMBO J* 16: 3693-3704, 1997.
- Ellenson LH and Wu TC: Focus on endometrial and cervical cancer. *Cancer Cell* 5: 533-538, 2004.
- Farnell YZ and Ing NH: The effects of estradiol and selective estrogen receptor modulators on gene expression and messenger RNA stability in immortalized sheep endometrial stromal cells and human endometrial adenocarcinoma cells. *J Steroid Biochem Mol Biol* 84: 453-461, 2003.
- Soliman PT, Wu D, Tortolero-Luna G, Schmelzer KM, Slomovitz BM, Bray MS, Gershenson DM and Lu KH: Association between adiponectin, insulin resistance, and endometrial cancer. *Cancer* 106: 2376-2381, 2006.
- Zakikhani M, Dowling RJ, Sonenberg N and Pollak MN: The effects of adiponectin and metformin on prostate and colon neoplasia involve activation of AMP-activated protein kinase. *Cancer Prev Res (Phila)* 1: 369-375, 2008.
- Gotlieb WH, Saumet J, Beauchamp MC, Gu J, Lau S, Pollak MN and Bruchim I: In vitro metformin anti-neoplastic activity in epithelial ovarian cancer. *Gynecol Oncol* 110: 246-250, 2008.
- Terry KL and Missmer SA: Epidemiology of ovarian and endometrial cancers. *Pathol Epidemiol Cancer*, 2017.
- Zhao H, Jiang Y, Liu Y, Yun C and Li L: Endogenous estrogen metabolites as biomarkers for endometrial cancer via a novel method of liquid chromatography-mass spectrometry with hollow fiber liquid-phase microextraction. *Horm Metab Res* 47: 158-164, 2015.
- Patel SM, Iqbal N, Kaul S, Ratcliffe SJ, Rickels MR, Reilly MP, Scattergood T, Basu A, Fuller C and Cappola AR: The effects of metformin and leuprolide acetate on insulin resistance and testosterone levels in non-diabetic postmenopausal women: A randomized, placebo-controlled trial. *Fertil Steril* 94: 2161-2166, 2010.
- Brown KA, Hunger NI, Docanto M and Simpson ER: Metformin inhibits aromatase expression in human breast adipose stromal cells via stimulation of AMP-activated protein kinase. *Breast Cancer Res Treat* 123: 591-596, 2010.
- Erdemoglu E, Güney M, Giray SG, Take G and Mungan T: Effects of metformin on mammalian target of rapamycin in a mouse model of endometrial hyperplasia. *Eur J Obstet Gynecol Reprod Biol* 145: 195-199, 2009.
- Burns KA and Korach KS: Estrogen receptors and human disease: An update. *Arch Toxicol* 86: 1491-1504, 2012.
- Ström A, Hartman J, Foster JS, Kietz S, Wimalasena J and Gustafsson JA: Estrogen receptor beta inhibits 17beta-estradiol-stimulated proliferation of the breast cancer cell line T47D. *Proc Natl Acad Sci USA* 101: 1566-1571, 2004.
- Helguero LA, Faulds MH, Gustafsson JA and Haldosén LA: Estrogen receptors alpha (ERalpha) and beta (ERbeta) differentially regulate proliferation and apoptosis of the normal murine mammary epithelial cell line HC11. *Oncogene* 24: 6605-6616, 2005.

40. Paruthiyil S, Parmar H, Kerekatte V, Cunha GR, Firestone GL and Leitman DC: Estrogen receptor beta inhibits human breast cancer cell proliferation and tumor formation by causing a G2 cell cycle arrest. *Cancer Res* 64: 423-428, 2004.
41. Grober OM, Mutarelli M, Giurato G, Ravo M, Cicatiello L, De Filippo MR, Ferraro L, Nassa G, Papa MF, Paris O, *et al*: Global analysis of estrogen receptor beta binding to breast cancer cell genome reveals an extensive interplay with estrogen receptor alpha for target gene regulation. *BMC Genomics* 12: 36, 2011.
42. Matthews J and Gustafsson JA: Estrogen signaling: A subtle balance between ER alpha and ER beta. *Mol Interv* 3: 281-292, 2003.
43. Ali SH, O'Donnell AL, Balu D, Pohl MB, Seyler MJ, Mohamed S, Mousa S and Dandona P: Estrogen receptor-alpha in the inhibition of cancer growth and angiogenesis. *Cancer Res* 60: 7094-7098, 2000.
44. Ali SH, O'Donnell AL, Balu D, Pohl MB, Seyler MJ, Mohamed S, Mousa S and Dandona P: High levels of oestrogen receptor-alpha in tumorigenesis: Inhibition of cell growth and angiogenic factors. *Cell Prolif* 34: 223-231, 2001.
45. Loose-Mitchell DS, Chiappetta C and Stancel GM: Estrogen regulation of c-fos messenger ribonucleic acid. *Mol Endocrinol* 2: 946-951, 1988.
46. Murphy LJ, Murphy LC and Friesen HG: Estrogen induction of N-myc and c-myc proto-oncogene expression in the rat uterus. *Endocrinology* 120: 1882-1888, 1987.
47. Weisz A, Cicatiello L, Persico E, Scalona M and Bresciani F: Estrogen stimulates transcription of c-jun protooncogene. *Mol Endocrinol* 4: 1041-1050, 1990.
48. Akinyeke T, Matsumura S, Wang X, Wu Y, Schalker ED, Saxena A, Yan W, Logan SK and Li X: Metformin targets c-MYC oncogene to prevent prostate cancer. *Carcinogenesis* 34: 2823-2832, 2013.
49. Blandino G, Valerio M, Cioce M, Mori F, Casadei L, Pulito C, Sacconi A, Biagioni F, Cortese G, Galanti S, *et al*: Metformin elicits anticancer effects through the sequential modulation of DICER and c-MYC. *Nat Commun* 3: 865, 2012.
50. Dang CV: MYC on the path to cancer. *Cell* 149: 22-35, 2012.