



Published in final edited form as:

Infect Control Hosp Epidemiol. 2017 June ; 38(6): 639–650. doi:10.1017/ice.2017.7.

Reducing *Clostridium difficile* in the inpatient setting: A systematic review of the adherence to and effectiveness of *C. difficile* prevention bundles

Anna Barker, BA^{*,1}, Caitlyn Ngam, BA, MPH^{*,1}, Jackson Musuuza, MBChB, MPH, MS², Valerie M. Vaughn, MD^{3,4}, and Nasia Safdar, MD, PhD^{§,5,6,7}

¹Department of Population Health Sciences, University of Wisconsin School of Medicine and Public Health, Madison, WI, USA

²Institute of Clinical and Translational Research, University of Wisconsin, Madison, WI, USA

³Department of Internal Medicine, University of Michigan, Ann Arbor, MI, USA

⁴The Patient Safety Enhancement Program, University of Michigan and VA Ann Arbor Health System, Ann Arbor, MI, USA

⁵William S. Middleton Memorial Veterans Affairs Hospital, Madison, WI, USA

⁶Division of Infectious Diseases, Department of Medicine, University of Wisconsin School of Medicine and Public Health, Madison, WI, USA

⁷Department of Infection Control, University of Wisconsin Hospital and Clinics, Madison, WI, USA

Abstract

Background—*Clostridium difficile* infection (CDI) is the most common infectious cause of nosocomial diarrhea and its prevention is an urgent public health priority. However, reduction of CDI is challenging, because of its complex pathogenesis, large reservoirs of colonized patients, and persistence of infectious spores. The literature lacks high quality evidence for evaluating interventions, and many hospitals have implemented bundled interventions to reduce CDI with variable results. Thus, we conducted a systematic review to examine the components of CDI bundles, their implementation processes, and their impact on CDI rates.

Methods—We conducted a comprehensive literature search of multiple computerized databases from their date of inception through April 30, 2016. The protocol was registered in PROSPERO. Bundle effectiveness, adherence, and study quality was assessed for each study meeting criteria for inclusion.

Results—In the 26 studies that met inclusion criteria for this review, we found that implementation and adherence factors to interventions were variably and incompletely reported, making study reproducibility and replicability challenging. Despite contextual differences and the

[§]Corresponding author, Nasia Safdar, MD, PhD. UWMF Centennial Building, 1685 Highland Avenue, Madison, WI 53705. Phone: 608-263-1546. Fax: 608-263-4464. ns2@medicine.wisc.edu.

*Equal contribution

The authors report no conflict of interest.

variety of bundle components utilized, all 26 studies reported an improvement in CDI rates. However, given the lack of randomized controlled trials in the literature, assessing a causal relationship between bundled interventions and CDI rates is currently impossible.

Conclusions—Cluster randomized trials that include a rigorous assessment of the implementation of bundled interventions are urgently needed to causally test the effect of intervention bundles on CDI rates.

Background

Clostridium difficile (*C. difficile*) infection (CDI) is a major public health threat in the healthcare setting, and is associated with considerable morbidity, mortality, and economic costs.^{1–6} Reporting of CDIs has been mandatory in England’s National Health Service since 2004 and *C. difficile* is considered one of the top three urgent threat pathogens by the Centers for Disease Control and Prevention in the United States.^{7,8} Beginning in 2017, CDI rates will be included among the hospital-acquired complications used by the Centers for Medicare and Medicaid to penalize the lowest performing hospitals.⁹

Control of CDI is especially challenging, given multiple sources of transmission and a complex, poorly understood pathogenesis and set of risk factors.¹⁰ *C. difficile* has large reservoirs in the environment, including asymptomatic carriers that may account for over half of disease transmission.^{11,12} Its spores can persist on hard surfaces for up to 5 months, further complicating disease eradication.¹³

Bundled interventions targeting catheter-associated urinary tract infections (CAUTI) and central line-associated blood stream infections (CLABSI) have had success in reducing the rates of those device-associated HAIs. Seeking to continue this trend, hospitals have implemented targeted *C. difficile* intervention bundles. Unlike CAUTI and CLABSI however, the evidence for these bundles is far less robust. Few randomized clinical trials have examined interventions to reduce CDI incidence, and those that have all focused on single interventions such as patient hand hygiene,¹⁴ disposable equipment,¹⁵ daily chlorhexidine bathing,¹⁶ or environmental disinfection,^{17,18} rather than an intervention bundle.

Bundled interventions require a high degree of compliance to be effective.¹⁹ Yet, adherence with complex bundle components may be challenging and variable across settings. Given the lack of direct evidence for CDI bundle adherence and intervention outcomes, we undertook a systematic review to examine common bundle components, evaluate component adherence and study replicability, and assess the effectiveness of bundles on reducing hospital CDI rates.

Methods

For the purposes of this review, a bundle was defined as any set of multiple (>1) interventions focused on reducing CDI in the inpatient setting.

Search Strategies

We conducted a comprehensive search of four databases: the Cochrane Central Register of Controlled Trials, PubMed, Web of Science, and the Cumulative Index to Nursing and Allied Health. We sought to capture articles and abstracts published between each database's date of inception and May 28th, 2015. Thus, the search start date was different for each database. Another search was run closer to publication to include articles available through April 30th, 2016. The search strategy was designed and conducted by an experienced librarian with input from the study team. The following keywords were used to search for bundled interventions aimed at reducing *C. difficile* infections: (c difficile OR c. difficile OR clostridium difficile OR "c diff" OR "c. diff") AND ("infection control" OR bundle OR bundled OR bundles OR "multiple control" OR "multiple controls" OR "control package" OR "control packages" OR "integrated control" OR "integrated controls" OR multipronged OR multi-pronged). We followed the Preferred Reporting Items for Systematic Reviews and Meta-analyses statement guidelines in conducting this systematic review.²⁰ The protocol was registered at the International prospective register of systematic reviews (PROSPERO), record number 2015:CRD42015023252.

All abstracts resulting from the search strategy were screened and potentially relevant articles for a full text review were identified. Bibliographies were manually inspected to identify relevant studies not previously identified by our database search.

Inclusion/exclusion criteria

We included all inpatient studies that examined the effectiveness of a CDI-specific intervention bundle and provided data on the rates of CDI before and after intervention implementation. Single intervention studies (non-bundle) and studies that did not provide data to evaluate effectiveness were excluded, as were abstracts, review articles, and editorials. There were no language restrictions.

Data Abstraction

The primary outcome of this review was the mean difference in the rates of hospital-acquired CDI. Rates were measured at the hospital level, in units defined by each article. For every study we abstracted the following: the interventions included in each bundle; *C. difficile* case definition; infection rates before and after intervention implementation; *C. difficile* outbreak status; hospital setting; study population; study design; and intervention adherence rates.

All studies were abstracted and screened independently by two reviewers (AB and CN). For disagreements regarding article inclusion, resolution was reached by discussion between the two reviewers.

Assessing bundle effectiveness and adherence

We assessed effectiveness of the bundles by extracting the reported point estimates and calculating the difference in infection rates before and after intervention implementation. Bundled interventions were categorized into 10 primary components: antibiotic stewardship, contact precautions, dedicated equipment, staff education, patient education, environmental

cleaning, hand hygiene, isolation and/or cohorting, proton pump inhibitor stewardship, and systems and workflow changes.

Adherence has been previously defined as the extent to which specified program components are delivered as outlined in a program manual.²¹ We evaluated adherence by identifying and quantifying the number of adherence measures within a given component of the CDI prevention bundle. A study was considered to have assessed adherence if it reported a method of measuring compliance for one or more bundle elements, such as direct observation or tracking glove usage.

TiDier Checklist

We assessed replicability of each study included in the final analysis using the Template for Intervention Description and Replication (TiDier) checklist.²² This tool consists of twelve dichotomous items that assess the description of an intervention and evaluate its replicability. The score reflects the number of items that a given intervention addressed, with higher scores indicating better replicability. The maximum score was twelve.

Bias Assessment

To assess the quality and risk of bias for each study, we used a modified version of the Checklist for Measuring Quality instrument developed by Downs and Black.^{23,24} This tool contains 27 dichotomous items regarding reporting, external validity, bias, confounding, and power. The maximum possible score of the modified instrument is 28, with the assessment of power modified from a 0–5 scale to 0–1.

Results

The search strategy above identified 1242 distinct articles, of which 1181 were excluded based on abstract information. The remaining 61 full text articles were reviewed, and 26 were determined to meet inclusion criteria. This is summarized in the PRISMA flow diagram (Figure 1).

Characteristics of included studies

While details of the case definitions for CDI differ between studies, they were generally consistent. Most required clinical symptoms and a positive *C. difficile* test. A comprehensive description of the studies is listed in Table 1. The study locations varied, including nine in Europe,^{25–33} three in Asia,^{34–36} and fourteen in North America.^{37–50} Most studies examined all hospital wards (65%, 17/26). Others analyzed specific wards or patient populations only: Bone marrow transplant,^{41,48} medical ICU,^{36,48} geriatric ward,³¹ surgical inpatients,⁴⁹ all units except psychiatry and pediatrics,³⁷ all units except neonatal,³² hip-fracture patients,²⁵ and patients over age two.²⁶

Our literature search did not identify any randomized controlled trials. Among included studies, 20 were interrupted time series^{25–31,33,34,37–40,42–44,46,47,49,50} and 6 were quasi-experimental pre-post intervention studies.^{32,35,36,41,45,48} Eleven were conducted in the midst of a *C. difficile* outbreak,^{27,28,32,37–39,41,43,46–48} eight as quality improvement projects

to reduce endemic rates,^{25,26,29,35,36,45,49,50} and seven in the context of upwardly trending CDI rates.^{30,31,33,34,40,42,44}

Intervention bundles components

The type of interventions implemented as part of a CDI bundle varied widely across studies (Table 2). Among the 10 bundle components, hand hygiene and environmental cleaning components were the most common interventions employed. Both were included in 88.5% (23/26) of the studies. These were followed by isolation and/or cohorting (77%, 20/26). Contact precautions, antibiotic stewardship, and staff education were each included in 73% (19/26) of studies. System and workflow changes were in 54% (14/26), dedicated equipment, 27%, (7/26), patient education, 19%, (5/26), and proton pump inhibitor stewardship, 12% (3/26).

Within each category, the interventions were multifaceted. Hand hygiene measures included sink installation, improving signage, and education initiatives. Hand hygiene referred to a variety of practices across studies, including increased use of pure alcohol-based hand rubs, soap and water, and chlorhexidine scrubs.

Environmental cleaning interventions included a diverse range of practices and agents. Some focused on increasing cleaning frequency, including enhanced daily decontamination, cleaning at discharge, and environmental cleaning for patients meeting symptomatic and diagnostic criteria. Others expanded the types of surfaces to be cleaned. The most common agent used for cleaning was sodium hypochlorite.

For isolation and cohorting interventions, CDI patients were often assigned single or side rooms and nursed as a cohort after a positive lab test. Some studies isolated symptomatic patients before case confirmation. Isolation was typically required until 48 hours after resolution of symptoms or continued until discharge. Enhanced contact precautions included expanding precautions to suspected cases and continuing these practices throughout the duration of hospitalization.

Antibiotic stewardship programs involved formulary restrictions, monitoring physician prescribing, and tracking hospital antibiotic consumption and purchasing. Antibiotic specific education initiatives promoted shortened treatment courses, limits on non-essential medications, and the timely de-escalation of empiric therapy.

Staff education initiatives included information on CDI treatment, prevention, diagnosis, transmission, etiology, and epidemiology, as well as contact precaution and isolation policies, hand hygiene, and antibiotic use. These interventions were disseminated through both ongoing and one-time programs. Patient education was conducted primarily via handouts, flyers, and signs that stressed the importance of hand hygiene in preventing *C. difficile* transmission.

Systems and workflow interventions aimed to change hospital practices to optimize prompt CDI diagnosis, and upon diagnosis, to rapidly involve infection prevention teams and start appropriate CDI patient care. Most interventions improved communication between diagnostic labs and healthcare providers using electronic medical record flagging or email

notifications. Two studies addressed patients who are asymptomatic *C. difficile* carriers.^{34,41} Use of dedicated equipment included stethoscopes, thermometers, blood pressure cuffs, and bedpans. Finally, proton pump inhibitor interventions restricted these medications according to specific clinical indications.

Adherence to bundle components

The measures used to assess adherence varied across studies. Evaluation of contact precautions included direct observations of staff, availability and quantity of personal protective equipment, and glove usage. Antibiotic stewardship programs were quantified by the reduction of antibiotic use and typically reported reduction at the single antibiotic level. Hand hygiene adherence was measured by direct observation and alcohol-based gel rub use. Surface swabbing and usage of cleaning materials was tracked to assess environmental decontamination.

Almost all articles reported measuring adherence for at least one component in the bundle (96.2%, 25/26) and 46.2% measured adherence for each component (12/26, Supplementary S1). However, most studies only stated that they had evaluated adherence to a bundle component, without reporting compliance results. For example, adherence to antibiotic stewardship was assessed in 89.5% studies (17/19). However, only three reported the actual results of their adherence data (Supplementary S1).^{31,32,39} Furthermore, because all three studies used different adherence measures, average antibiotic stewardship compliance could not be determined.

TiDier scores—The level of detail with which interventions were described varied widely both between and within studies. The average TiDier score across all interventions was 6.0, ranging from 1.0²⁷ to 10.4.⁴⁵ Two studies provided comprehensive descriptions for a single bundle component, obtaining the maximum score of 12 for these interventions.^{37,44} Only 9 studies scored 10 or more on any single intervention (Supplementary S1).^{29,33,34,37–39,44,45,49} The average TiDer score for a given bundle component was 5.7, ranging from 8.2 for systems and workflow interventions to 3.0 for proton pump inhibitor stewardship. Most interventions had an average TiDier score between 5 and 7. Each intervention component evaluated an average of 2.1 adherence measures, ranging from 3.3 for systems and workflow interventions to 1.3 for dedicated equipment.

Improvement in *C. difficile* Rates—All 26 studies showed a decrease in the rate of CDIs after bundle implementation (Table 3). The improvement was significant at the 0.05 level for the 15 studies reporting p-values (60%, 15/25).^{25,30,31,35–41,43,45,48–50} The odd ratio for developing CDI under the intervention bundle compared to the control period was reported in three studies and ranged from 0.29 to 0.38.^{36,38,39} The relative risk was 0.60 in the single study reporting this measure.⁴⁰

Study Quality—The average study quality score, as assessed by the modified Downs and Black checklist,²⁵ was 15.2 out of 28 (Supplementary S2). Total scores ranged from 13 to 18. All studies performed well on questions regarding external validity and poorly on confounding.

Discussion

The overarching goal of bundled interventions is to implement combinations of evidence-based strategies that complement each other and work synergistically. In the case of CDI, the paucity of evidence-based interventions for prevention lead to considerable variation among the choice of bundle elements. The lack of adherence data and consistently low TiDier scores among many of these studies indicate that details on intervention implementation were poorly reported. This makes it challenging to corroborate and compare results among studies.

According to the Society for Healthcare Epidemiology of America and Infectious Diseases Society of America's 2014 CDI prevention strategies compendium,⁵¹ none of the 10 interventions compiled in this review were supported by level I evidence for CDI prevention. Antibiotic stewardship and contact precautions using gloves were designated as having a moderate quality evidence of effectiveness (level II), referring to either a small number of supporting studies, moderate study limitations, or variation in results between studies. Contact precautions using gowns, hand hygiene, isolation and cohorting, environmental cleaning, patient and staff CDI education, dedicated equipment, and several systems and workflow interventions were rated as having low grade evidence (III), used when studies have major flaws, considerable variation, or are based on expert consensus. The recommendation for proton pump inhibitor stewardship was considered unresolved. This lack of strong evidence for any single intervention is likely related to the heterogeneity we found in the selection of bundle components.

Bundle implementation was associated with a decline in CDI rates in all 26 studies published in the literature, making this a potentially promising approach for reducing CDI. However, methodological limitations preclude the assessment of a causal relationship between bundled interventions and CDI rates.

Our systematic review extends and updates the findings of a prior review.⁵² In 2014, Yakob, et al. conducted a review of 21 articles on CDI interventions and their effectiveness, from which they identified 6 eligible studies. In our review we incorporated 5 articles from this prior review,^{38–40,46,49} as well as 21 additional articles. We did not include one article from Yakob's study, because pre- and post-intervention rates were not clearly reported.⁵³ Given the rapidly changing epidemiology of *C. difficile* and use of CDI bundles, our up-to-date analysis is highly relevant to the current state of CDI control.

Many hospitals have not experienced declines in CDI rates, despite intensive efforts to implement prevention strategies.^{54,55} While neither of these studies implemented a CDI bundle, they are otherwise similar to many of the studies that met our inclusion criteria. Our review sheds light on three potential reasons for a lack of decline in CDI rates. First, compliance to interventions may be below the threshold necessary to be effective. A 2011 study by Furuya, et al. found that the effect of a CLABSI bundle was not observed until compliance with at least one bundle element reached 95%.¹⁹ If adherence to bundle elements was low in the reviewed studies, the potential impact of *C. difficile* bundles may be underestimated.

Second, the lack of infection control strategies focusing on asymptomatic carriers may have contributed to the lack of declines in CDI rates. Only 8% of CDI bundles included surveillance of asymptomatic carriers. Yet, focusing exclusively on patients with clinical CDI neglects the much larger reservoir of colonized asymptomatic hospital patients.⁵⁶ Asymptomatic patients are an important reservoir of infectious *C. difficile* spores and the impact of interventions focusing on colonized patients should be rigorously evaluated in future studies.

Finally, hand hygiene is especially complex in the context of CDI. Alcohol-based hand rub is an essential component of most horizontal hand hygiene interventions, and its benefits are widely reported.^{57–59} Horizontal, or broad based, approaches aim to reduce all infections, instead of targeting specific pathogens. The use of alcohol gels is typically counted in adherence data, but pure alcohol-based hand rubs are not active against *C. difficile* spores.⁶⁰ Chlorhexidine mixed gels have some efficacy,⁶¹ thus distinguishing between them, pure alcohol-based rubs, and soap and water is essential in the context of CDI bundles. Hand hygiene compliance data that include the use of pure alcohol-based rubs may provide hospitals with an inaccurate assessment of CDI prevention efforts.

There are several limitations to this review. First, given the heterogeneity of bundles, it is unclear if CDI reduction can be attributed to a similar mechanism across all studies. We attempted to mitigate this by loosely defining a bundle as any infection control rollout with more than one intervention, hypothesizing that successful bundle implementation is itself a significant factor regardless of the specific components implemented. Second, the majority of studies in this review lacked rigorous statistical testing assessing the significance of the decline in CDI rates post-intervention. This was especially common among studies implementing interventions mid-outbreak, which often lacked definitive comparison rates. Outbreak rates, without contemporaneous controls, can appear statistically significant even when the observed effect is due to regression to the mean. When pre-intervention CDI rates were unclear, we have presented the highest level of CDI incidence during the outbreak prior to bundle implementation. In addition, publication bias may have favored the publication of studies in which bundles showed a beneficial effect. If studies reporting no reduction in CDI rates after bundle introduction were less likely to be published, then our findings could overestimate the positive impact of bundle introduction. Finally, it was impossible to quantify the overall effectiveness of bundle implementation and intervention adherence, given the range of outcome and adherence measures employed. The variety of outcome measures used and the paucity of reported error measurements reported made it impossible to undertake a meta-analysis. The development and use of standard intervention-specific adherence measures would facilitate comparisons across future studies.

Ultimately, this review draws from a wide range of hospital types, locations, and infection control contexts. Given that CDI rates improved across all studies despite contextual differences and the variety of bundle components, a tailored bundle approach may be effective. However, this approach should be tested using cluster randomized clinical trials in multiple sites and settings with attention to implementation and process factors to facilitate replication and generalizability.

Supplementary Material

Refer to Web version on PubMed Central for supplementary material.

Acknowledgments

We acknowledge health sciences librarian Lia Vellardita, MA, at the University of Wisconsin-Madison for her assistance with our literature search.

Funding

Dr. Safdar is supported by a National Institutes of Health, Veterans Affairs Merit Award, and a Veterans Affairs Patient Safety Center award.

Anna Barker is supported under NIH awards UL1TR000427 and TL1TR000429, administered by the University of Wisconsin-Madison's Institute for Clinical and Translational Research.

This project was supported by grant number R03HS023791 from the Agency for Healthcare Research and Quality. The content is solely the responsibility of the authors and does not necessarily represent the official views of the Agency for Healthcare Research.

References

1. Redelings MD, Sorvillo F, Mascola L. Increase in Clostridium difficile-related Mortality Rates, United States, 1999–2004. *Emerg Infect Dis.* 2007; 13:417–419.
2. Kuijper EJ, van Dissel JT, Wilcox MH. Clostridium difficile: changing epidemiology and new treatment options. *Curr Opin Infect Dis.* 2007; 20:376–383. [PubMed: 17609596]
3. Freeman JBM, Baines SD, Corver J, et al. The changing epidemiology of Clostridium difficile infections. *Clin Microbiol Rev.* 2010; 23:529–549. [PubMed: 20610822]
4. Deneve C, Janoir C, Poilane I, Fantinato C, Collignon A. New trends in Clostridium difficile virulence and pathogenesis. *Int J Antimicrob Agents.* 2009; 33:S24–28. [PubMed: 19303565]
5. Lessa FC, Yi M, Bamberg WM, et al. Burden of Clostridium difficile infection in the United States. *N Engl J Med.* 2015; 372:825–834. [PubMed: 25714160]
6. Gabriel L, Beriot-Mathiot A. Hospitalization stay and costs attributable to Clostridium difficile infection a critical review. *J Hosp Infect.* 2014; 88:12–21. [PubMed: 24996516]
7. [Accessed April 4, 2016] Inclusion criteria for reporting C. difficile infection to the surveillance system. Health Protection Agency of the United Kingdom website. https://www.gov.uk/government/uploads/system/uploads/attachment_data/file/328334/c_difficile_inclusion_criteria_for_reporting.pdf Published 2014
8. Antibiotic Resistance Threats in the United States. [Accessed November 12, 2015] Center for Disease Control website. <http://www.cdc.gov/drugresistance/pdf/ar-threats-2013-508.pdf> Published 2013
9. [Accessed April 2, 2016] CMS to improve quality of care during hospital inpatient stays. Centers for Medicare & Medicaid Services website <https://www.cms.gov/newsroom/mediareleasedatabase/fact-sheets/2014-fact-sheets-items/2014-08-04-2.html> Published 2014
10. Hedge DD, Strain JD, Heins JR, Farver DK. New advances in the treatment of Clostridium difficile infection (CDI). *Ther Clin Risk Manag.* 2008; 4:949–964. [PubMed: 19209277]
11. Eyre DW, Cule ML, Wilson DJ, et al. Diverse sources of C. difficile infection identified on whole-genome sequencing. *NEJM.* 2013; 369:1195–1205. [PubMed: 24066741]
12. Walker AS, Eyre D, Wyllie DH, et al. Characterization of Clostridium difficile hospital ward-based transmission using extensive epidemiological data and molecular typing. *PLOS Med.* 2012; 9:e1001172. [PubMed: 22346738]
13. Kramer ASI, Kampf G. How long do nosocomial pathogens persist on inanimate surfaces? A systematic review. *BMC Infect Dis.* 2006; 6:30. [PubMed: 16504036]

14. Kundrapu S, Venkata S, Jury I, Deshpande A, Donskey CJ. A randomized trial of soap and water hand wash versus alcohol hand rub for removal of *Clostridium difficile* spores from hands of patients. *Infect Control Hosp Epidemiol*. 2014; 35:204–206. [PubMed: 24442089]
15. Jernigan JA, Siegman-Igra Y, Guerrant RC, Farr BM. A randomized crossover study of disposable thermometers for prevention of *Clostridium difficile* and other nosocomial infections. *Infect Control Hosp Epidemiol*. 1998; 19:494–499.
16. Noto MJ, Domenico HJ, Byrne DW, et al. Chlorhexidine bathing and health care-associated infections. *JAMA*. 2015; 313:369–378. [PubMed: 25602496]
17. Kundraphu S, Sunkelsula V, Jury LA, Sitzlar BM, Donskey CJ. Daily disinfection of high-touch surfaces in isolation rooms to reduce contamination of healthcare workers' hands. *Infect Control Hosp Epidemiol*. 2012; 33:1039–1042. [PubMed: 22961024]
18. Barbut F, Menuet D, Verachten M, Girou E. Comparison of the efficacy of a hydrogen peroxide dry-mist disinfection system and sodium hypochlorite solution for eradication of *Clostridium difficile* spores. *Infect Control Hosp Epidemiol*. 2009; 30:507–514. [PubMed: 19379098]
19. Furuya EY, Dick A, Perencevich EN, Pogorzelska M, Goldmann D, Stone PW. Central line bundle implementation in US intensive care units and impact on bloodstream infections. *PLoS One*. 2011; 6:e15452. [PubMed: 21267440]
20. Moher D, Liberati A, Tetzlaff J, Altman DG, The PRISMA Group. Preferred Reporting Items for Systematic Reviews and Meta-Analyses: The PRISMA Statement. *Ann Intern Med*. 2009; 151:264–169. [PubMed: 19622511]
21. Dane AV, Schneider B. Program integrity in primary and early secondary prevention: are implementation effects out of control? *Clin Psychol Rev*. 1998; 18:23–45. [PubMed: 9455622]
22. Hoffmann T, Glasziou PP, Boutron I, et al. Better reporting of interventions: template for intervention description and replication (TIDieR) checklist and guide. *BMJ*. 2014; 348:g1687. [PubMed: 24609605]
23. Downs SH, Black N. The feasibility of creating a checklist for the assessment of the methodological quality both of randomised and non-randomised studies of health care interventions. *J epidemiol community health*. 1998; 52:377–384. [PubMed: 9764259]
24. O'Connor SR, Tully MA, Ryan B, Bradley JM, Baxter GD, McDonough SM. Failure of numerical quality assessment scale to identify potential risk of bias in a systematic review: a comparison study. *BMC Res Notes*. 2015; 8:224. [PubMed: 26048813]
25. Gulihar A, Nixon M, Jenkins D, Taylor GJ. *Clostridium difficile* in hip fracture patients: prevention, treatment and associated mortality. *Injury*. 2009; 40:746–751. [PubMed: 19450797]
26. Marufu O, Desai N, Aldred D, Brown T, Eltringham I. Analysis of interventions to reduce the incidence of *Clostridium difficile* infection at a London teaching hospital trust, 2003–2011. *J Hosp Infect*. 2015; 89:38–45. [PubMed: 25480022]
27. Mattner F, Winterfeld I, Oswald B, Solbach W. Successful bundle of prevention measures against a high CDAD incidence at a university hospital. *Hyg Med*. 2008; 33:346–352.
28. Oleastro M, Coelho M, Giau M, et al. Outbreak of *Clostridium difficile* PCR ribotype 027--the recent experience of a regional hospital. *BMC Infect Dis*. 2014; 14:209. [PubMed: 24739945]
29. Power M, Wigglesworth N, Donaldson E, Chadwick P, Gillibrand S, Goldmann D. Reducing *Clostridium difficile* infection in acute care by using an improvement collaborative. *BMJ*. 2010; 341:c3359. [PubMed: 20659985]
30. Price J, Cheek E, Lippett S, et al. Impact of an intervention to control *Clostridium difficile* infection on hospital- and community-onset disease; an interrupted time series analysis. *Clin Microbiol Infect*. 2010; 16:1297–1302. [PubMed: 19832710]
31. Stone SP, Beric V, Quick A, Balestrini AA, Kibbler CC. The effect of an enhanced infection-control policy on the incidence of *Clostridium difficile* infection and methicillin-resistant *Staphylococcus aureus* colonization in acute elderly medical patients. *Age Ageing*. 1998; 27:561–568. [PubMed: 12675094]
32. Struelens MJ, Maas A, Nonhoff C, et al. Control of nosocomial transmission of *Clostridium difficile* based on sporadic case surveillance. *Am J Med*. 1991; 91:138S–144S. [PubMed: 1928155]

33. White H, Wiselka M, Bell D. A Multi-Faceted Approach of One Teaching Hospital NHS Trust during the Clostridium difficile Epidemic-Antibiotic Management and Beyond. *Antibiotics Basel*. 2016; 5:E13. [PubMed: 27025528]
34. Cheng VC, Chau P, So SY, et al. Containment of Clostridium difficile infection without reduction in antimicrobial use in Hong Kong. *Eur J Clin Microbiol Infect Dis*. 2015; 34:1381–1386. [PubMed: 25800414]
35. Suzuki H, Senda J, Yamashita K, et al. Impact of intensive infection control team activities on the acquisition of methicillin-resistant staphylococcus aureus, drug-resistant Pseudomonas aeruginosa and the incidence of Clostridium difficile-associated disease. *J Infect Chemother*. 2013; 19:1047–1052. [PubMed: 23715827]
36. You E, Song H, Cho J, Lee J. Reduction in the incidence of hospital-acquired Clostridium difficile infection through infection control interventions other than the restriction of antimicrobial use. *Int J Infect Dis*. 2014; 22:9–10. [PubMed: 24583565]
37. Valiquette L, Cossette B, Garant MP, Diab H, Pepin J. Impact of a reduction in the use of high-risk antibiotics on the course of an epidemic of Clostridium difficile-associated disease caused by the hypervirulent NAP1/027 strain. *Clin Infect Dis*. 2007; 45:S112–121. [PubMed: 17683015]
38. Muto CA, Blank M, Marsh JW, et al. Control of an outbreak of infection with the hypervirulent Clostridium difficile BI strain in a university hospital using a comprehensive “bundle” approach. *Clin Infect Dis*. 2007; 45:1266–1273. [PubMed: 17968819]
39. Weiss K, Boisvet A, Chagnon M, et al. Multipronged intervention strategy to control an outbreak of Clostridium difficile infection (CDI) and its impact on the rates of CDI from 2002 to 2007. *Infect Control Hosp Epidemiol*. 2009; 30:156–162. [PubMed: 19125681]
40. Abbett SK, Yokoe D, Lipsitz SR, et al. Proposed checklist of hospital interventions to decrease the incidence of healthcare-associated Clostridium difficile infection. *Infect Control Hosp Epidemiol*. 2009; 30:1062–1069. [PubMed: 19751156]
41. Hanna H, Raad I, Gonzalez V, et al. Control of nosocomial Clostridium difficile transmission in bone marrow transplant patients. *Infect Control Hosp Epidemiol*. 2000; 21:226–228. [PubMed: 10738997]
42. Whitaker J, Brown B, Vidal S, Calcaterra M. Designing a protocol that eliminates Clostridium difficile: a collaborative venture. *Am J Infect Control*. 2007; 35:310–314. [PubMed: 17577477]
43. Wong-McClure RA, Ramirez-Salas E, Mora-Brenes N, et al. Long term effect of infection control practices and associated factors during a major Clostridium difficile outbreak in Costa Rica. *J Infect Dev Ctries*. 2013; 7:914–921. [PubMed: 24334937]
44. Mermel LA, Jefferson J, Blanchard K, et al. Reducing Clostridium difficile incidence, colectomies, and mortality in the hospital setting: a successful multidisciplinary approach. *Jt Comm J Qual Patient Saf*. 2013; 39:298–305. [PubMed: 23888639]
45. Zafar AB, Gaydos LA, Furlong WB, Nguyen MH, Mennonna PA. Effectiveness of infection control program in controlling nosocomial Clostridium difficile. *Am J Infect Control*. 1998; 26:588–593. [PubMed: 9836844]
46. Salgado CD, Mauldin PD, Fogle PJ, Bosso JA. Analysis of an outbreak of Clostridium difficile infection controlled with enhanced infection control measures. *Am J Infect Control*. 2009; 37:458–464. [PubMed: 19243859]
47. Lai KK, Melvin ZS, Menard MJ, Kotilainen HR, Baker S. Clostridium difficile-associated diarrheal epidemiology, risk factors, and infection control. *Infect Control Hosp Epidemiol*. 1997; 18:628–632. [PubMed: 9309434]
48. Apisarnthanarak A, Zack JE, Mayfield JL, et al. Effectiveness of environmental and infection control programs to reduce transmission of Clostridium difficile. *Clin Infect Dis*. 2004; 39:601–602. [PubMed: 15356835]
49. Bishop J, Parry MF, Hall T. Decreasing Clostridium difficile infections in surgery: impact of a practice bundle incorporating a resident rounding protocol. *Conn Med*. 2013; 77:69–75. [PubMed: 23513633]
50. Brakovich B, Bonham E, van Brackle L. War on the spore: Clostridium difficile disease among patients in a long-term acute care hospital. *J Healthc Qual*. 2013; 35:15–21.

51. Dubberke E, Carling P, Carrico R, et al. Strategies to prevent *Clostridium difficile* infections in acute care hospitals: 2014 update. *Infect Control Hosp Epidemiol*. 2014; 35:628–645. [PubMed: 24799639]
52. Yakob L, Riley TV, Paterson DL, Marquess J, Clements AC. Assessing control bundles for *Clostridium difficile*: a review and mathematical model. *Emerg Microbes Infect*. 2014; 3:e43. [PubMed: 26038744]
53. Koll BS, Ruiz R, Calfee DP, et al. Prevention of hospital-onset *Clostridium difficile* infection in the New York Metropolitan Region using a collaborative intervention model. *J Health Qual*. 2014; 36:35–45.
54. Kamboj M, Sheahan A, Sun J, et al. Transmission of *Clostridium difficile* during hospitalization for allogeneic stem cell transplant. *Infect Control Hosp Epidemiol*. 2016; 37:8–15. [PubMed: 26486102]
55. Roth VR. The more we learn, the less we know. *Infect Control Hosp Epidemiol*. 2016; (37):16–18. [PubMed: 26687712]
56. Gerding D, Johnson S, Peterson L, Mulligan M, Silva J. *Clostridium difficile*-associated diarrhea and colitis. *Infect Control Hosp Epidemiol*. 1995; 16:459–477. [PubMed: 7594392]
57. Larson EL, and 1992, 1993, and 1994 APIC Guidelines Committee. APIC guideline for handwashing and hand antisepsis in health care settings. *Am J Infect Control*. 1995; 23:251–269. [PubMed: 7503437]
58. [Accessed March 12, 2016] WHO guidelines on hand hygiene in health care: First global patient safety challenge, clean care is safer care. World Health Organization website. <http://www.who.int/gpsc/5may/tools/9789241597906/en/> Published 2009
59. Cohen SH, Gerding D, Johnson S, et al. Clinical practice guidelines for *Clostridium difficile* infection in adults: 2010 update by the Society for Healthcare Epidemiology of America (SHEA) and the Infections Diseases Society of America (IDSA). *Infect Control Hosp Epidemiol*. 2010; 31:431–455. [PubMed: 20307191]
60. Jabbar U, Leischner J, Kasper D, et al. Effectiveness of alcohol-based hand rubs for removal of *Clostridium difficile* spores from hands. *Infect Control Hosp Epidemiol*. 2010; 31:565–570. [PubMed: 20429659]
61. Gerding DN, Muto C, Owens RC. Measures to control and prevent *Clostridium difficile* infection. *Clin Infect Dis*. 2008; 46:S43–S49. [PubMed: 18177221]

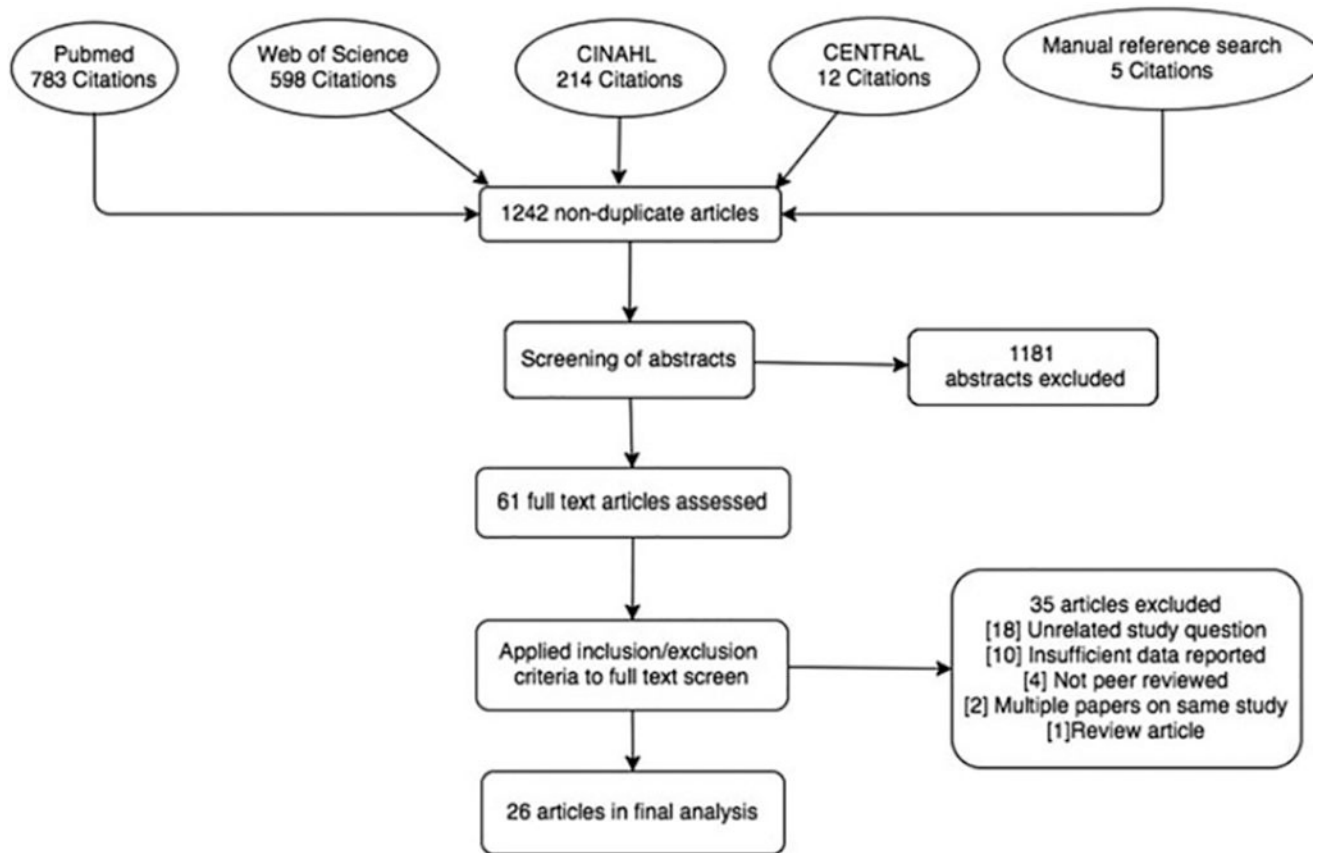


Figure 1.

Table 1

Study characteristics

Author, Year	Study design	Bundle start date(s)	Setting	Study population ^a	CDI definition	Context
Abbett et al., 2009 ⁴⁰	Interrupted time series	1/06–4/06	Brigham and Women's Hospital, Boston, USA; 750-bed tertiary, academic	All inpatients	+ toxin	Rates trending upward pre-intervention
Apisarntharak et al., 2004 ⁴⁸	Pre-post intervention	6/02–8/02	Barnes- Jewish hospital, St. Louis, USA; academic	BMT and MICU	+ toxin	Outbreak
Bishop et al., 2013 ⁴⁹	Interrupted time series	9/08	Stamford Hospital, Stamford, USA; academic	All surgical patients (n = 59,093)	+ toxin or pseudomembranous colitis	Endemic rates
Brakovich et al., 2013 ⁵⁰	Interrupted time series	12/09	Long-term acute care hospital, southeast USA	All inpatients	+ combined antigen markers, glutamate dehydrogenase, toxin A/B	Endemic rates
Cheng et al., 2015 ³⁴	Interrupted time series	Q2,10	1 acute and 3 extended care hospitals; 3,200 beds; Hong Kong	All inpatients	Diarrhea, + toxin, and + stool culture	Rates trending upward pre-intervention
Gulihar et al., 2009 ²⁵	Interrupted time series	8/06–5/07	University Hospitals of Leicester NHS Trust; UK	Adults with femur fracture (n = 3,417)	Diarrhea and + toxin	Endemic rates
Hanna et al., 2000 ⁴¹	Pre-post intervention	5/95	University of Texas MD Anderson Cancer Center, Houston, USA	BMT patients	Diarrhea and + toxin	Outbreak
Lai et al., 1997 ⁴⁷	Interrupted time series	10/91–2/92	University of Massachusetts Memorial Medical Center, Worcester, USA; 370-bed, tertiary, academic	All inpatients	Diarrhea and + toxin	Outbreak
Marufu et al., 2015 ²⁶	Interrupted time series	2/03–10/11	King's College Hospital NHS Foundation Trust, London, UK	Inpatients over age 2 (n = 704,654)	Loose stools and + toxin test or pseudomembranous and CDI histopathology	Endemic rates
Mattner et al., 2008 ²⁷	Interrupted time series	5/07–4/08	Northern Germany; academic	All inpatients	Diarrhea and + toxin	Outbreak
Mermel et al., 2013 ⁴⁴	Interrupted time series	Q4,06-Q3,12	Rhode Island Hospital, Providence, USA; 719-bed, tertiary, academic	All inpatients	Diarrhea or toxic megacolon and + toxin or pseudomembranous colitis	Rates trending upward pre-intervention
Muto et al., 2007 ³⁸	Interrupted time series	7/00–7/03	University of Pittsburgh Medical Center–Presbyterian, Pittsburgh, USA; 834-bed, tertiary, academic	All inpatients	+ toxin or pseudomembranous colitis	Outbreak
Oleastro et al., 2014 ²⁸	Interrupted time series	4/12	Centro Hospitalar do Algarve, Lagos, Portugal; 330-bed secondary hospital and 40 bed internal medicine center	All inpatients	+ toxin	Outbreak
Power et al., 2010 ²⁹	Interrupted time series	2/07–12/07	Salford Royal NHS Foundation Trust, England, UK; 850 bed, academic	All inpatients	Diarrhea and + toxin	Endemic rates

Author, Year	Study design	Bundle start date(s)	Setting	Study population ^a	CDI definition	Context
Price et al., 2010 ³⁰	Interrupted time series	1/08	Brighton and Sussex University Hospitals NHS trust, UK; 820-bed acute secondary and tertiary, academic	All inpatients (n = 200,245)	Diarrhea and + toxin	Rates trending upward pre-intervention
Salgado et al., 2009 ⁴⁶	Interrupted time series	11/04	Medical University of South Carolina hospital, 610 bed, tertiary	All inpatients	Diarrhea and + toxin	Outbreak
Stone et al., 1998 ³¹	Interrupted time series	7/95	Royal Free NHS Trust, London, England, UK; academic	Non-MRSA geriatrics patients (n = 2,467)	Diarrhea and + toxin	Rates trending upward pre-intervention
Struelens et al., 1991 ³²	Pre-post intervention	8/88–7/89	University of Brussels Hospital Erasme, Bruxelles, Belgium; 840-bed, tertiary	All except neonatal	Diarrhea or pseudomembranous colitis and + stool culture or + toxin	Outbreak
Suzuki et al., 2013 ³⁵	Pre-post intervention	10/11	Tsukuba Medical Center Hospital, Tsukuba, Japan; 409-bed, tertiary, academic	All inpatients	+ toxin	Endemic rates
Valiquette et al., 2007 ³⁷	Interrupted time series	9/03–10/04	Centre Hospitalier Universitaire de Sherbrooke, CA; 683-bed secondary/tertiary	All except psychiatry, pediatrics	+ toxin, pseudomembranous/antibiotic associated/ <i>C. difficile</i> colitis	Outbreak
Weiss et al., 2009 ³⁹	Interrupted time series	6/05–11/05	Maisonneuve-Rosemont Hospital, Montreal, CA; 554-bed acute care, tertiary, academic	All inpatients	Diarrhea and + toxin	Outbreak
Whitaker et al., 2007 ⁴²	Interrupted time series	10/03–7/04	University Community Hospital, Tampa, USA; 469-bed tertiary	All inpatients	+ toxin	Rates trending upward pre-intervention
White, et al., 2016 ³³	Interrupted time series	08/06	University Hospitals of Leicester (UHL), 2000-bed acute UK NHS Trust	All inpatients	Diarrhea and + toxin	Rates trending upward pre-intervention
Wong-mcclure et al., 2013 ⁴³	Interrupted time series	1/09–5/09	Costa Rica; 685 bed, tertiary	All inpatients	Diarrhea, + toxin, and + stool culture	Outbreak
You et al., 2014 ³⁶	Pre-post intervention	4/12	Wonkwang University Hospital, Iksan, South Korea; academic	MICU (n = 567)	Diarrhea and + toxin	Endemic rates
Zafar et al., 1998 ⁴⁵	Pre-post intervention	4/90–93	Columbia Arlington Hospital, Arlington, USA; 350-bed acute care community teaching	All inpatients	Diarrhea and + toxin	Endemic rates

^aThe total sample size is reported for all studies that provided this information; BMT: Bone marrow transplant, *C. difficile*: *Clostridium difficile*, CDI: *C. difficile* infection, MICU: Medical intensive care unit, NHS: National Health System, UK: United Kingdom, USA: United States of America

Table 2

Intervention details

First Author	Intervention	Component Details
Abbett	Antibiotic Stewardship	Discontinue nonessential antimicrobials when suspected case
	Contact Precautions	Enhanced; gowns, gloves, alcohol gel before, soap and water after patient contact
	Dedicated Equipment	Stethoscope in patient rooms
	Education- Staff	CDI and prompt responses; nurses, doctors, physician assistants, environmental services, and administration
	Environmental Cleaning	Hyperchlorite disinfectant at discharge
	Hand Hygiene	Described in contact precautions
	Isolation and/or Cohorting	Suspected cases in single room
	Systems and Workflow	Infection control for suspected cases, communication improved between lab and nurses, infection preventionists and environmental services, infection preventionists sent daily CDI list and confirm prevention practices, electronic medical record flagging, standardize CDI treatment
Apisarn-thanarak	Contact Precautions	Not Specified
	Education- Staff	Regarding contact precaution
	Environmental Cleaning	Patient rooms and staff areas cleaned with 10% hypochlorite, carpeted areas cleaned
	Hand Hygiene	Signage
Bishop	Antibiotic Stewardship	Prophylactic antibiotics regulated, fluoroquinolones limited
	Contact Precautions	Limit patient contact to 1 member of surgical team, lab coats provided, glove changes
	Environmental Cleaning	Terminal cleaning focused on immediate patient environment
	Hand Hygiene	Before and after gloving, increased education, increased monitoring, facility improvements,
	Proton Pump Inhibitor Stewardship	Limited to intensive care unit or specific clinical indications
	Systems and Workflow	Resident rounding to limit staff exposures
Brakovich	Environmental Cleaning	New cleaning equipment (microfiber mops vs. cotton), decontaminate more frequently, hydrogen peroxide vapor decontamination
	Antibiotic Stewardship	Lower frequency and duration of antimicrobials, restrict clindamycin and cephalosporin
	Education - Staff	Hands on training for environmental services
	Hand Hygiene	Recommend soap and water, reminder stickers, staff and visitors
	Isolation and/or Cohorting	CDI patient isolate to private room
	Contact Precautions	Contact precautions for all CDI patients
	Systems and Workflow	Improved diagnostic testing, cleaning checklist for environmental services staff
Cheng	Antibiotic Stewardship	Immediate concurrent feedback, and focus on broad-spectrum intravenous antibiotics
	Contact Precautions	Gloves and gowns
	Dedicated Equipment	Bedpans and commodes
	Education- Staff	Train cleaning staff, emphasizing high-touch areas, training ward staff quarterly
	Environmental Cleaning	Clean rooms twice daily, 1,000 parts per million sodium hypochlorite, curtain change at discharge
	Hand Hygiene	Soap and water
	Isolation and/or Cohorting	Nursed as cohort, preferably in single rooms

First Author	Intervention	Component Details
Guilhar	Antibiotic Stewardship	Five-day antibiotic stop policy, approval for high-risk antibiotics, surgery prophylaxis changed from cefuroxime to co-amoxiclav or vancomycin
	Education- Patient	Focus on hand hygiene
	Education- Staff	Focus on hand hygiene
	Environmental Cleaning	Sodium-dichloroisocyanurate for environmental cleaning
	Hand Hygiene	Alcohol gel on rounds, soap/water before and after ward and isolation bays, new sinks
	Isolation and/or Cohorting	Rapid isolation of diarrheal patients in side rooms or isolation bays
Hanna	Contact Precautions	Enteric precautions for all diarrheal patients, disposable gowns, gloves in CDI rooms
	Dedicated Equipment	Mercury thermometers
	Education- Staff	On-ward sessions on CDI
	Environmental Cleaning	Daily, routine, and terminal cleaning with 1:100 bleach
	Hand Hygiene	Chlorhexidine gluconate before and after patient care, individual rolls of paper towels
	Isolation and/or Cohorting	Not specified
Lai	Contact Precautions	Universal precautions
	Education- Staff	Intense education on modes of transmission, prevention, and control
	Environmental Cleaning	New commode cleaning, new commodes
	Hand Hygiene	Emphasized for staff, new soap dispensers in patient bathrooms, towelettes before meals
	Isolation and/or Cohorting	CDI patients cohorted
Marufu	Antibiotic Stewardship	Microbiologist-led antibiotic rounds, restrictive antibiotic policy, audits
	Dedicated Equipment	Disposable bedpans and macerators
	Education- Staff	Infection control training consults, ongoing notices for staff
	Environmental Cleaning	Clean equipment and environment with hypochlorite, new cleaning strategy group
	Hand Hygiene	WHO Clean your hands campaign
	Isolation and/or Cohorting	Isolation unit introduced
	Systems and Workflow	Infection control scorecard, new infection control strategy team, review meetings, CDI feedback to all wards, Saving Lives toolkit, United Kingdom infection control code, diarrhea care plan and action cards, CDI ward rounds
Mattner	Education- Staff	Occupational groups trained
	Environmental Cleaning	Sporicidal disinfection done more frequently
	Hand Hygiene	Recommend gloves, hand wash, disinfection
	Isolation and/or Cohorting	Introduced
Mermel	Antibiotic Stewardship	Audit antibiotic use, provide feedback, use electronic drug orders, pre-authorization requirements, streamline therapy based on labs, optimize doses, intravenous to oral conversion, increase narrow spectrum antibiotic use, limit quinolones, clindamycin
	Contact Precautions	Easily accessible, many size gloves, gowns, masks in isolation rooms, empty trash often
	Dedicated Equipment	Blood pressure cuff, thermometer, stethoscope in isolation rooms
	Education- Staff	Annual infection control education, include antibiotic policy
	Environmental Cleaning	Hire more housekeepers, hypochlorite-based cleaning of isolation rooms, dedicate team monitor cleaning supplies, enhanced daily room cleaning
	Hand Hygiene	Soap and water use encouraged

First Author	Intervention	Component Details
	Systems and Workflow	New tool to identify high-risk patients, nurses order CDI test and initiate isolation, improve CDI test sensitivity, increase testing frequency, develop management guidelines
Muto	Antibiotic Stewardship	Clindamycin, ceftriaxone, levofloxacin, broad spectrum antimicrobials require approval
	Contact Precautions	Sustained for duration of hospitalization
	Education- Staff	Printed material, lecture at staff meetings on epidemiology, risk factors, clinical findings, control measures, and rates
	Environmental Cleaning	Daily cleaning with bleach (1:100) of high-touch surfaces, later increased to 1:10
	Hand Hygiene	Soap and water (not alcohol) for CDI patients
	Isolation and/or Cohorting	Cohorting facilitated by EMR
	Systems and Workflow	Nurses can order lab test, EMR flag high-risk patients and email alert physicians, establish CDI management team for rapid evaluation, real-time lab notifications
Oleastro	Antibiotic Stewardship	Limit quinolones and 3 rd generation cephalosporins by time and indication
	Contact Precautions	Gloves and aprons
	Education- Staff	Educate on treatment, prevention, diagnosis
	Education- Patients	Distribute written material
	Environmental Cleaning	Clean ward and equipment every 8-hours with 5,000 parts per million hypochlorite, with peroxide hydrogen vaporization after discharge
	Hand Hygiene	Soap and Water
	Isolation and/or Cohorting	Admit to individual room, cohort cases
	Proton Pump Inhibitor Stewardship	Limited to those clinically indicated
	Systems and Workflow	Report outbreak to authorities, nurses, ward leaders, establish Regional Infection Control Group network, protocol for early diagnosis and treatment, type toxin positive samples
Power	Antibiotic Stewardship	Antimicrobial management team developed new guidelines to restrict certain antibiotics
	Education- Staff	Focused and systematic education for all staff, target knowledge gaps identified by questionnaire.
	Education- Patients	Symptom reporting, poster campaign
	Environmental Cleaning	Clean seals used for equipment, disposable washbowls, bed linens stored centrally, identify key surfaces
	Hand Hygiene	Practices studied and improved, common errors identified, strict enforcement, hand washing rounds for patient initiated
	Isolation and/or Cohorting	Isolated at start of suspected symptoms
Price	Antibiotic Stewardship	Cephalosporin and quinolone restrictions
	Contact Precautions	Scrubs, gloves, and aprons changed between patient contacts
	Isolation and/or Cohorting	Phase 1: All diarrheal patients isolated in side rooms, Phase 2: CDI patients in CDI cohort ward within 24 hours of CDI diagnosis, kept until discharge. Dedicated nursing staff.
Salgado	Contact Precautions	Keep until CDI ruled out as cause of diarrhea, CDI patients kept in contact precaution for duration of hospitalization: gown, gloves, private rooms
	Environmental Cleaning	Use bleach in areas occupied by CDI patients
	Hand Hygiene	Require soap and water, not alcohol gel
Stone	Antibiotic Stewardship	Limit antibiotics to seven day course, restrict the use of cephalosporins

First Author	Intervention	Component Details
	Hand Hygiene	Emphasized between patients, 4% chlorhexidine scrub if prolonged contact, 0.5% chlorhexidine rub otherwise, dispensers at each bay and side room
	Systems and Workflow	Providers alerted to new cases, quarterly rates discussed at teaching sessions, nurses informed
Struelens	Antibiotic Stewardship	Alternatives to clindamycin
	Contact Precautions	Gloves and gowns for fecal contact
	Environmental Cleaning	Daily furniture and floor cleaning (0.04% formaldehyde, 0.03% glutaraldehyde), dedicated utensils, single use towels
	Hand Hygiene	Soap and water between patient contact
	Isolation and/or Cohorting	Single rooms for those with diarrhea, cohorting of infected patients
	Systems and Workflow	Early diagnostic testing
Suzuki	Antibiotic Stewardship	Carbapenem use restricted
	Contact Precautions	In place beginning with diarrhea
	Systems and Workflow	Previous microbiology results of all admissions chart reviewed by infection preventionists, MDRO information provided to ward staff, infection control rounds within two days of new MDRO or hospital admission of patient with previous MDRO infection or colonization
Valiquette	Antibiotic Stewardship	Decrease use of second and third generation cephalosporin, ciprofloxacin, clindamycin, and macrolides, decreased course of treatment
	Dedicated Equipment	Rectal thermometers
	Education- Staff	Lectures on isolation, disinfection, cleaning, antibiotic guidelines
	Environmental Cleaning	Hypochlorite sodium for terminal disinfection, comprehensive ward sodium hypochlorite disinfection for wards with less than three cases
	Isolation and/or Cohorting	Isolate suspected cases until discharge
Weiss	Antibiotic Stewardship	Change antibiotic use according to Quebec guidelines
	Contact Precautions	Contact isolation for test-positive patients, routine gloving in CDI wards
	Education- Patient	CDI hand hygiene handout
	Education- Staff	Sixty-minute lecture on CDI transmission, epidemiology, hand hygiene, and isolation. Regular education on wards with more than two cases
	Environmental Cleaning	1:50 bleach/water solution used for cleaning (down from 1:10)
	Hand Hygiene	Soap and water encouraged over alcohol gel before/after visit patient room, 85 new sinks
	Isolation and/or Cohorting	Dedicated CDI ward
	Systems and Workflow	Low turnover, dedicated CDI ward housekeeping team trained, rapid enzyme immunoassay diagnostic test on first liquid stool, hire four infection preventionists
Whitaker	Antibiotic Stewardship	Formulary restriction for high-risk antibiotics
	Contact Precautions	Gowns, gloves, soap and water hand hygiene only until ruled CDI negative
	Education- Patient	Flyer on CDI and prevention
	Education- Staff	Information on antibiotic use, clinical signs, prescriptive patterns, and awareness
	Environmental Cleaning	10% hypochlorite disinfection in patient rooms, nursing units, horizontal surfaces, and medical equipment
	Hand Hygiene	Soap and water
	Isolation and/or Cohorting	Not specified
	Systems and Workflow	Automated report of MDR organism history at admission, standardized nursing units for isolation, lab results shared immediately,

First Author	Intervention	Component Details
White	Antibiotic Stewardship	Five-day duration policy for the treatment of most common infections, limitation on the use of common classes of broad spectrum agents, "Prescription codes" to sanction the use of restricted antibiotics
	Education- Staff	Mandatory training program for clinical staff- an online or face-to-face module on infection prevention matters, a module on antimicrobial prescribing for all medical staff and nurse prescribers
	Environmental Cleaning	Additional housekeeping staff, individual wards were vacated and deep cleaned before being treated with aerosolised hydrogen peroxide
	Hand Hygiene	Colorful signs throughout the hospital, computer screensavers, audio messages, "naked from the elbow down" policy, prohibition of white coats, and wrist and hand jewelry.
	Isolation and/or Cohorting	A 22-bed combined isolation and cohort ward, with six single rooms, and the remainder arranged in four bedded bays, patient cohorting
	Proton Pump Inhibitor Stewardship	Limited the use of proton pump inhibitors within the hospital and mandated regular review of prescriptions
	Systems and Workflow	"Paper care pathway," new Infection Control Operational Group, individual Directorate Infection Control Groups, and a dedicated infection prevention nurse post in CDI
Wong-McClure	Antibiotic Stewardship	Broad spectrum antibiotics restricted
	Contact Precautions	Enforced for suspected cases, single use personal protective equipment
	Environmental Cleaning	Clean affected wards with 1:10 hypochlorite solution, clean equipment with 1:10 quaternary ammonium.
	Hand Hygiene	Enforcement campaign for staff and patients
	Isolation and/or Cohorting	Strict isolation for confirmed cases
You	Contact Precautions	Gloves and gowns
	Education- Staff	Lecture for all medical staff on baseline data
	Environmental Cleaning	Twice daily disinfection with 1000ppm sodium hypochlorite
	Hand Hygiene	0.3% triclosan soap and water before and after contact with CDI patients
	Isolation and/or Cohorting	CDI patients in isolation zone, 2.2 meters between beds and sink, isolation until 48 hours symptom free
Zafar	Contact Precautions	Gloves and gowns required in CDI rooms
	Dedicated Equipment	Equipment dedicated to individual patients and gas sterilized
	Education- Staff	Monthly lecture program, videos, handouts, posters
	Environmental Cleaning	Phenol-containing disinfectant for surfaces contaminated with body fluids, cart wash sterilizer installed on wheelchairs, stretchers
	Hand Hygiene	0.03% Triclosan soap and water required, education
	Isolation and/or Cohorting	Cohort patients and nurses, restrict patient movement
	Systems and Workflow	Centralize processing department, infection preventionist on rounds, regular meetings between infection preventionists and nurses, CDI rates disseminated monthly

CDI: *Clostridium difficile* infection, MDRO: multi-drug resistant organism

Table 3

CDI bundle effectiveness

First author	Pre-intervention CDI rate (cases/1,000 PD)	Post-intervention CDI rate (cases/1,000 PD)	CDI rate reduction (%)
<i>Eight interventions in bundle^a</i>			
Abbett ⁴⁰	1.1 (95% CI: 1.00–1.21)	0.66 (95% CI: 0.60–0.72)	40%; RR: 0.60 (95% CI: 0.52 – 0.68), p<0.001
Oleastro ²⁸	0.823 ^b	0.119	85.5%
<i>Seven interventions in bundle</i>			
Brakovich ⁵⁰	5.652	3.151	44.2%, p<0.001
Cheng ³⁴	Increase 17.0% per quarter	Decrease 6.1% per quarter	
Marufu ²⁶	5.2 /1,000 admissions	1.1 /1,000 admissions	78.7%
Mermel ⁴⁴	12.2/1,000 discharges ^b	3.6/1,000 discharges	70.5%
Muto ³⁸	10.4/1,000 discharges ^b	3.0/1,000 discharges	71%; OR: 0.286 (95% CI: 0.185, 0.435), p<0.001
Weiss ³⁹	37.28 /1000 admissions ^b	14.48 /1000 admissions	61%, OR 0.379 (95% CI: 0.331–0.435), p<0.001
Whitaker ⁴²	1.33	0.45	66%
White ³³	170 cases/month	2–11 cases/month	80%
Zafar ⁴⁵	155/year	65/year	60%, p<0.05
<i>Six interventions in bundle</i>			
Bishop ⁴⁹	4.13/month (SD: 2.64)	1.93/month (SD: 1.56)	53%, p=0.03
Hanna ⁴¹	60% attack rate ^b	17% attack rate	72%, p<0.05
Struelens ³²	0.178 ^b	0.034	77.3%
<i>Five interventions in bundle</i>			
Gulihar ²⁵	7.1% patients develop CDI	1.5% patients develop CDI	79%, p <0.001
Lai ⁴⁷	22.5/1,000 discharges ^b	13.2/1,000 discharges	41.3%
Power ²⁹	2.60 (95% CI: 2.11–3.17) intervention; 1.15 (95% CI: 1.03–1.29) control	0.69 (95%CI: 0.50–0.91) Intervention; 0.51 (95% CI: 0.44–0.60) control	73.46% intervention; 55.65% control
Valiquette ³⁷	2.03 ^b	0.82	60%, p=0.007
Wong-McClure ⁴³	2.96 ^b	2.12	28.4%, p=0.001
You ³⁶	4.70	1.53	67%; OR: 0.36 (95% CI: 0.13 – 0.85), p=0.012
<i>Four interventions in bundle</i>			
Apisarnthanarak ⁴⁸	5.8 MICU; 8.0 BMT ^b	2.1 MICU; 4.2 BMT	MICU 63.8%, p=0.05; BMT 47.5%, p=0.04
Mattner ²⁷	1.08 ^b	Data in bar graph	8 wards significantly reduced CDI
<i>Three interventions in bundle</i>			
Price ³⁰	1.30	0.69	46.9%, p=0.03
Salgado ⁴⁶	5.52 ^b	1.24	77.5%

First author	Pre-intervention CDI rate (cases/1,000 PD)	Post-intervention CDI rate (cases/1,000 PD)	CDI rate reduction (%)
Stone ³¹	33.5 /1,000 admissions	19.4 /1,000 admissions	42%, p<0.05
Suzuki ³⁵	0.471 ^b	0.108	77%, p<0.001

^aEducation is considered one intervention, whether it includes staff and/or patient components;

^bPre-intervention data collected during CDI outbreak

BMT: Bone marrow transplant, CDI: *Clostridium difficile* infection, CI: confidence interval, MICU: Medical intensive care unit, OR: Odds ratio, PD: patient days, SD: Standard deviation, RR: Relative risk