

# MGMT and MSH6 immunoreexpression for functioning pituitary macroadenomas

Alexander S. G. Micko<sup>1</sup> · Adelheid Wöhrer<sup>2</sup> · Romana Höftberger<sup>2</sup> · Greisa Vila<sup>3</sup> · Christine Marosi<sup>4</sup> · Engelbert Knosp<sup>1</sup> · Stefan Wolfsberger<sup>1</sup>

Published online: 12 September 2017  
© The Author(s) 2017. This article is an open access publication

## Abstract

**Purpose** Knowledge of biological behavior is crucial for clinical management of functioning pituitary macroadenomas. For recurrent cases unresponsive to standard treatment, temozolomide (TMZ) has been used as a therapeutic alternative. MGMT (O6-methyl-guanine-DNA methyltransferase) and MSH6 (mutS homolog 6) immunoreexpression have been linked to the response to TMZ treatment and MGMT immunoreexpression has been additionally linked to early recurrence of non-functioning pituitary adenomas. The aim of this study was to assess the prognostic value of MGMT and MSH6 immunoreexpression for aggressive functioning pituitary adenomas.

**Methods** The study cohort comprised a single center series of 76 patients who underwent an operation for functioning pituitary macroadenoma. We retrospectively compared 38 patients with postoperative persistent or recurrent disease with another set of 38 patients who were in endocrine remission.

**Results** Low-to-moderate MGMT immunoreexpression (<50%) was significantly more frequent in the group with persistent/recurrent disease than in cases of endocrine

remission (66 vs. 21%,  $p < 0.001$ ). Furthermore, adenomas with low-to-moderate MGMT immunoreexpression were significantly more often recurrent (76 vs. 30%,  $p < 0.001$ ) and invasive (64 vs. 28%,  $p = 0.002$ ).

**Conclusion** In our series, low-to-moderate MGMT immunoreexpression was the only marker that significantly correlated with surgical invasiveness and recurrence in functioning pituitary macroadenomas. Therefore, in the future, MGMT status may be considered an additional marker for understanding the biological behavior of pituitary adenomas.

**Keywords** Aggressive pituitary adenoma · MGMT · MSH6 · TMZ

## Introduction

Depending on their biological behavior, recurrent functioning pituitary macroadenomas may pose a significant treatment challenge. Certain of these adenomas, although histopathologically classified as benign, remain incurable despite multiple surgeries, medical treatment and radiation treatment [1, 2]. In an effort to identify tumors with a more aggressive biological behavior, a histopathological category intermediate between typical adenomas and pituitary carcinomas, termed “atypical” adenomas, was established by the WHO Classification of Tumours of Endocrine Organs in 2004. These constitute as many as 2.7–15% of all pituitary adenoma cases [3, 4]. Due to a wide spectrum of behaviors that are not entirely benign and can cause significant morbidity, this terminology is currently under re-evaluation and will be revised in an upcoming WHO edition [5].

Primarily a mainstay of treatment for patients with high-grade gliomas and advanced melanoma [6, 7], the alkylating agent temozolomide (TMZ) has also shown its effectiveness

✉ Engelbert Knosp  
engelbert.knosp@meduniwien.ac.at

<sup>1</sup> Department of Neurosurgery, Medical University Vienna, Waehringer Guertel 18-20, 1097 Vienna, Austria

<sup>2</sup> Institute of Neurology, Medical University Vienna, Vienna, Austria

<sup>3</sup> Division of Endocrinology and Metabolism, Department of Internal Medicine III, Medical University Vienna, Vienna, Austria

<sup>4</sup> Division of Oncology, Department of Internal Medicine I, Medical University of Vienna, Vienna, Austria

against malignant neuroendocrine tumors [8]. In the search for additional therapeutic agents for aggressive pituitary adenomas and carcinomas unresponsive to standard treatment, TMZ has been used.

A positive response to TMZ has been described to depend on the downregulation of the DNA repair enzyme MGMT [9]. Initial reports from pituitary adenomas confirmed this association of a low MGMT immunoreexpression with a positive response to TMZ treatment [10–14]. With increasing patient numbers, cases with low MGMT immunoreexpression that do not respond to TMZ treatment have been reported [15], corroborating that additional factors might influence the response to TMZ.

An additional marker for the response to TMZ therapy was reported to be MSH6, a DNA mismatch repair protein [16]. MSH6 deficiency in gliomas was associated with negative response to TMZ therapy independently of MGMT status [17]. In a first small series of aggressive pituitary adenomas and carcinomas retrospectively tested for MSH6 status, the positive response to TMZ treatment corresponded to a high immunoreexpression of MSH6 [18]. However, in further studies a loss of MSH6 in the presence of low MGMT immunoreexpression was associated with TMZ resistance [19, 20].

Although small case series evaluated the MGMT status prior to TMZ treatment in aggressive adenomas and pituitary carcinomas, a systematic evaluation of MGMT and MSH6 status in functioning pituitary macroadenomas has not been performed thus far. From our observation that low-to-moderate MGMT immunoreexpression correlates with early recurrence in non-functioning pituitary adenomas [21], the aim of the current study was to investigate the status of MGMT and MSH6 immunoreexpression in a consecutive series of recurrent functioning macroadenomas. Further, we compared our results to those from a control group of patients in remission to determine (1) the prognostic value of MGMT and MSH6 for aggressive biological adenoma behavior and (2) to predict a potential response to TMZ therapy.

## Methods

### Patients

The study cohort comprised a retrospective, single center series of 76 patients who underwent an operation for histopathologically verified clinically functioning pituitary macroadenoma between 1997 and 2014. All patients were operated on by expert pituitary surgeons and the goal was gross total tumor resection in every case.

The study group consisted of 38 patients (group PD); a combined group of 28 patients with postoperative persistent disease (due to invasiveness) and 10 patients with recurrent

disease after surgery for functioning pituitary macroadenoma. The control group consisted of 38 patients in endocrine remission (group ER) operated on in the same time period who were matched by adenoma subtype, age at first surgery, follow-up and gender distribution.

This study was approved by the ethics committee (EC Nr: 1008/2014) and was performed in accordance with the principles of the Declaration of Helsinki. The tumor samples were evaluated with the consent of the patients for further histopathological examination.

Surgical cure was defined by endocrine remission (ER) with the following characteristics: morning serum cortisol level ( $<5 \mu\text{g/dl}$ ) alone or combined with normal 24-h urinary free cortisol (UFC) level in adrenocorticotrophic hormone (ACTH) producing adenomas [22]; suppressed growth hormone (GH) less than 0.4 ng/ml during oGTT (oral glucose tolerance test) or a random GH less than 1.0 ng/ml and normal IGF1 in GH producing adenomas [23]; normal prolactin (PRL) in PRL producing adenomas [24]; normal free  $T_4$  level in thyroid-stimulating (TSH) producing adenomas [25]; postoperatively controlled at outpatient clinic: 4 weeks, 3 months, 6 months and afterwards once yearly. Patients who, subsequent to surgery, developed abnormal concentration values during follow-up and required medical treatment were categorized as recurrent disease.

Postoperative persistent or recurrent disease (PD) was defined by elevated plasma cortisol or UFC level; elevated IGF1 and insufficient suppressed GH during oGTT or a random GH  $>1.0 \text{ ng/ml}$ ; elevated PRL; elevated free  $T_4$  and TSH level;  $\pm$ radiologically verified residual tumor postoperatively controlled at outpatient clinic: 4 weeks, 3 months, 6 months and afterwards dependent on the progress of tumor growth (at least once a year).

Tumor invasion was based on MR imaging as well as intraoperative signs of invasion into the cavernous sinus and/or surrounding structures.

### Histopathological examinations

We examined the molecular markers MGMT and MSH6 in addition to our standard histopathological workup including MIB-1, in all patients. If MIB-1 was  $>3\%$ , the additional criteria of high immunoreexpression of p53, mitoses  $>2/10$  high-power fields (HPF) and nuclear pleomorphism within the specimen had to be fulfilled for identification of an atypical adenoma. Additionally, the clinicopathological classification proposed by Trouillas et al. [26] was included. Signs of invasion as well as two or more of the following proliferation markers were considered: MIB-1  $>3\%$ , mitoses  $>2/10$  HPF, p53 positive (10 strongly positive nuclei/10 HPF).

## Tissue processing

All biopsy specimens were fixed in 4% neutral buffered formalin, routinely processed, embedded in paraffin, cut at 5  $\mu$ m and stained with hematoxylin and eosin. Immunohistochemistry (IHC) was performed with a streptavidin-biotin-peroxidase complex method.

The following antibodies were used for staining with a Dako AutostainerPlus Link automated immunostainer: ACTH (DakoCytomation, Glostrup, Denmark; monoclonal; 1:1000), GH (Dako; polyclonal; 1:5000), PRL (Dako; polyclonal 1:4000), TSH (Biogenex, Sanraman, CA; monoclonal; 1:500), luteinizing hormone (Dako; monoclonal; 1:50), follicle-stimulating hormone (Biogenex; 1:500), the alpha-subunit of glycoprotein hormone (Acris, San Diego, CA; monoclonal; 1:40 000), MIB-1 (Dako; monoclonal; 1:200) and p53 (Dako; monoclonal; 1:50). For pretreatment and visualization, the Envision FLEX Plus Dako kit was used according to the manufacturers recommendations.

IHC with mouse monoclonal antibodies for MGMT (Neomarkers, Fremont, CA; 1:50) and MSH6 (Cell Marque, Rocklin, CA; 1:250) was performed as follows: after deparaffinization, 3–5 mm thick sections underwent heat-induced epitope retrieval in citrate buffer, pH 6.0. Endogenous peroxidase activity was blocked with 3% hydrogen peroxide in methanol (10 min). After each following step, sections were washed with 0.01 M PBS (pH 7.4) 3 times. Tissue sections were incubated overnight at 4 °C with the primary antibody. The next day, sections were labelled with the appropriate secondary antibody, incubated with avidin-biotin-peroxidase, and visualized with a standard diaminobenzidine (DAB) detection kit (Dako Envision). Sections were then counterstained with Mayer's hematoxylin. IHC for pan-cytokeratin was used to characterize densely and sparsely granulated GH adenomas. Positive control tissues consisted of paraffin-embedded sections of colon cancer for immunostaining of MGMT and MSH6. As a negative control, we used a non-relevant antibody of the same species (mouse) and of the same immunoglobulin isotype (IgG1).

## Assessment

The MIB-1 labelling index was evaluated manually as the percentage of immunopositive cells per 500 cells in the hotspot area. For MGMT, the specimens were divided into three groups: <10% (low), 10–50% (moderate) and >50% (high) immunopositive cells, as described previously [9, 27]. For MSH6, the specimens were classified into a four-tiered score: 0: immunonegative, 1: <10%, 2: 10–50%, or 3: >50% immunopositive cells. A score  $\geq 2$  (>10% immunopositive cells) was considered immunopositive [18].

The immunoreactivity of MGMT and MSH6, as well as the MIB-1 labelling index, was evaluated microscopically

(Olympus BHS, Tokyo, Japan) by 3 observers (A.M., A.W. and R.H.) blinded to the extent of surgical resection. Only areas with highest immunoreactivity and minimal necrosis, fibrosis or artifacts were selected for evaluation.

## Statistical analysis

The data are presented as the means and ranges for continuous variables and as frequencies for categorical variables. To assess the difference in MGMT and MSH6 status between the two groups (group PD and group ER)  $\chi^2$ -test with Pearson's correlation coefficient was performed. Differences in the MIB-1 index between the two groups were assessed by unpaired *t* tests. To assess potential prognostic variables of markers for invasiveness, we evaluated MIB-1, MGMT < 10, MGMT < 50 and MSH6 < 10 using a binary logistic regression analyses.

A *p* value <0.05 was considered significant. For statistical analyses SPSS® version 21.0 software (SPSS Inc., Chicago, IL, USA) was used.

## Results

### Patient characteristics

Our study cohort (group PD) consisted of 38 consecutive patients with functioning pituitary macroadenomas and post-operative persistent or recurrent disease. The control group (group ER) consisted of 38 patients with matched subtypes of functioning macroadenomas in postoperative endocrine remission.

Of these 76 patients, histological subtypes were composed of 8 ACTH adenomas (8 basophilic), 26 GH adenomas (17 acidophilic, 9 chromophobic), 40 PRL adenomas (20 chromophobic, 14 acidophilic, 6 both) and 2 TSH adenomas (2 basophilic). In the case of the 40 PRL adenomas, the indication for surgery was resistance to dopamine-agonist therapy (*n* = 10), rapid visual loss by mass effect due to cystic component and/or apoplexy (*n* = 19), and patient preference instead of medical treatment (*n* = 11). In the case of GH adenomas, all patients were naïve to sandostatin analogues prior to the operation. In total, 15 atypical adenomas were identified.

The variables between the groups were not significantly different except for size (*p* = <0.001), invasiveness (*p* = <0.001) and granulation pattern of GH adenomas (*p* = 0.04). For further patient characteristics, see Table 1.

### Assessment of MGMT and MSH6 immunoreactivity

Surgical tumor samples were histopathologically analyzed for immunoreactivity of MGMT, MSH6 and MIB-1.

**Table 1** Patient Characteristics

	Group PD		Group ER		P
	n (range)	%	n (range)	%	
Number of patients	38		38		
Number of surgeries	1.2 (1–4)		1		
Follow-up (years)	7.9 (0.3–26)		5.1 (0.4–20)		NS
Time to 2nd surgery (years)	0.3–7		/		
Age at first surgery (years)	42 (7–80)		40 (16–73)		NS
Gender					
Male	18	47	15	39	NS
Female	20	53	23	61	NS
Size (mm)	25 (12–45)		18 (11–40)		<0.001
Approach at 1st surgery					
Transsphenoidal	38	100	38	100	
Invasiveness (radiological/surgical)	27	71	6	16	<0.001
MIB-1 (%)	3.4 (0.3–15.7)		3.5 (0.4–18.1)		NS
Atypical adenoma	7	18	8	21	NS
Histologic subtype					
ACTH (Cushing's disease)	4	11	4	11	
GH (acromegaly)	13	34	13	34	
Densely granulated	6	(46)	11	(85)	0.04
Sparsely granulated	7	(54)	2	(15)	
PRL (prolactinoma)	20	53	20	53	
TSH	1	3	1	3	

Immunohistopathological examination was possible in all 76 cases.

### MGMT

The frequency of low MGMT immunoexpression (<10%) was 20/76 (26%) across all cases. Low MGMT immunoexpression was significantly more frequent in group PD 17/38 (45%) than in group ER 3/38 (8%;  $p < 0.001$ ) (Table 2).

Tumors with low MGMT immunoexpression showed a significantly higher rate of recurrence ( $p < 0.001$ ), but no significance for higher MIB-1 ( $p > 0.05$ ), higher rate of invasiveness ( $p > 0.05$ ), higher rate of atypia (WHO,  $p > 0.05$ ; Trouillas Classification: 1a = 3/26; 1b = 9/17; 2a = 17/25; 2b = 4/8) or higher rate of positive MSH6 immunoexpression ( $p > 0.05$ ) was found when compared to tumors with moderate-to-high MGMT (>10%) immunoexpression (Table 3).

The frequency of low-to-moderate MGMT immunoexpression (<50%) was 33/76 (43%) across all cases. Low-to-moderate MGMT immunoexpression was significantly more frequent in group PD 25/38 (66%) than in group ER 8/38 (21%;  $p < 0.001$ ) (Table 2).

Tumors with low-to-moderate MGMT immunoexpression showed a significantly higher rate of invasiveness ( $p = 0.002$ ) and recurrence ( $p < 0.001$ ) but no significance for higher MIB-1 ( $p > 0.05$ ), higher rate of atypia (WHO,  $p > 0.05$ ; Trouillas Classification: 1a = 3/26; 1b = 9/17; 2a = 17/25;

**Table 2** Overview—MGMT and MSH6 expression in functioning pituitary macroadenomas

	Overall n (%)	Group PD n (%)	Group ER n (%)	P
MGMT expression				
Overall	76 (100)	38 (50)	38 (50)	NS
Low				
<10%	20 (26)	17 (45)	3 (8)	<0.001
10–50%	13 (17)	8 (21)	5 (13)	NS
0–50% <sup>a</sup>	33 (43)	25 (66)	8 (21)	<0.001
High				
>50%	43 (57)	13 (34)	30 (79)	<0.001
MSH6 expression				
Overall	76 (100)	38 (50)	38 (50)	NS
Low				
0%	13 (17)	9 (24)	4 (10)	NS
1–10%	30 (39)	15 (39)	15 (40)	NS
0–10% <sup>b</sup>	43 (57)	24 (63)	19 (50)	NS
High				
>10%	33 (43)	14 (37)	19 (50)	NS

NS non significant ( $p > 0.05$ )

<sup>a</sup>Combining the groups <10% and 10–50%

<sup>b</sup>Combining the groups 0% and 1–10%

**Table 3** MGMT and MSH6 expression results

	MIB-1		Invasive		Recurrent		Atypical	
	mean	P	n/n	P	n/n	P	n/n	P
MGMT expression								
<10% (low)	3.7		12/20		17/20		5/20	
		NS		NS		<0.001		NS
>10% (moderate-to-high)	3.4		21/56		21/56		10/56	
<50% (low-to-moderate)	3.2		21/33		25/33		8/33	
		NS		0.002		<0.001		NS
>50% (high)	3.6		12/43		13/43		7/43	
MSH6 expression								
<10% (low)	2.8		23/43		24/43		7/43	
		NS		0.04		NS		NS
>10% (high)	4.3		10/33		14/33		8/33	

NS non-significant ( $p > 0.05$ )

2b = 4/8) or higher rate of positive MSH6 immunoeexpression ( $p > 0.05$ ) was found compared to tumours with high MGMT (>50%) immunoeexpression (Table 3).

### MSH6

The frequency of low MSH6 immunoeexpression (<10%) was 43/76 (57%) across all cases. Low MSH6 immunoeexpression was not more frequent in group PD 24/38 (63%) than in group ER 19/38 (50%;  $p > 0.05$ ) (Table 2).

Tumors with low MSH6 immunoeexpression showed a higher rate of invasiveness ( $p = 0.04$ ), but no significantly higher MIB-1 ( $p > 0.05$ ), higher rate of recurrence ( $p > 0.05$ ) higher rate of atypia (WHO,  $P > 0.05$ ; Trouillas Classification: 1a = 11/26; 1b = 9/17; 2a = 18/25; 2b = 5/8) or higher rate of low MGMT ( $p > 0.05$ ) was found compared to tumors with high MSH6 (>10%) immunoeexpression (Table 3).

### Logistic regression

We performed logistic regression analyses with invasiveness as the dependent variable. The only variable that remained independently significant for predicting invasiveness was low-to-moderate MGMT (<50%) immunoeexpression (95% CI 1.43–24.86, OR 5.95,  $p = 0.014$ ).

### Low MGMT with concurrent low/high MSH6 immunoeexpression

We further analyzed the patient subgroup with low MGMT (<10%) and low MSH6 (<10%) immunoeexpression. In total 12/76 (16%) cases fulfilled both criteria. Of these 12 patients (8 PRL, 3 GH and 1 TSH) 9/12 (75%) belonged to the group PD with a mean MIB-1 of 2.9. Three of these patients fulfilled the criteria of an atypical adenoma.

In the case of applying low MGMT (<10%) and high MSH6 (>10%) immunoeexpression, 8/76 (11%) patients fulfilled both criteria. Of these 8 patients (7 PRL, 1 GH) all patients were in group PD with a mean MIB-1 of 4.9. Two of these patients fulfilled the criteria of an atypical adenoma.

### MGMT, MSH6 and MIB-1 immunoeexpression after radiation and further surgery

In 11/38 of these cases (29%) from the PD group with multiple operations, standard medical treatment as well as radiation therapy, either by gamma-knife or external radiation (linear particle accelerator), had been performed. These 11 cases were identified as 4 ACTH, 6 GH and 1 PRL adenoma. The initial MIB-1 was 2.9 (0.3–5.7) at the time of the 1st operation and 7.1 (0.5–27.6) at the time of last operation, and only 1 GH adenoma was operated on one time and it did not reoccur after following gamma-knife. In all 6 GH (irrespectively of granulation pattern) and in 1 ACTH producing adenomas, a stable tumor mass was assessed at follow-up controls after radiation therapy. Furthermore, none of these patients necessitated any further surgery.

There were 4 cases (3 ACTH, 1 PRL) that did not respond to surgery and radiation, initial MGMT status changed in 3 of these cases (75%). In 2 ACTH cases MGMT status changed from 0–10% to 10–50%. In one case of PRL, MGMT status changed from >50% to <10%. In all 4 cases, MSH6 status did not change. In one of these 2 ACTH cases, evolution to a pituitary carcinoma occurred 7 years after the first operation. In this case, gamma-knife was performed 4 months after the initial operation.

### Aggressive pituitary adenomas and TMZ treatment

Three patients with aggressive functioning macroadenomas (1 PRL; 2 ACTH) were treated with TMZ at our department,

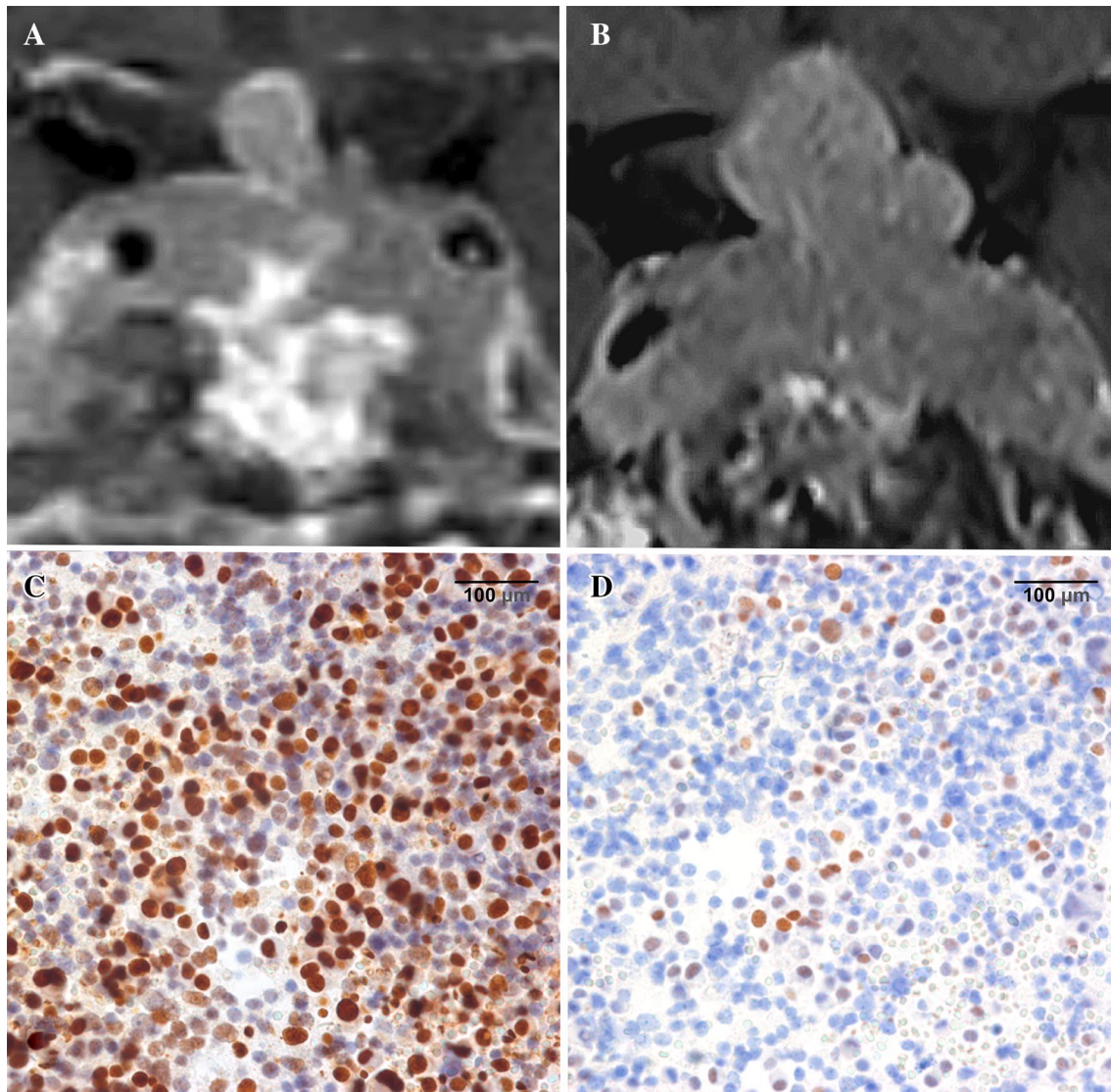
after surgical intervention, medical treatment and radiation therapy were not possible any more. Each case had been discussed in an interdisciplinary board and received a clinical protocol consisting of oral TMZ, 200 mg m<sup>-2</sup>, 5 days every 28 days.

One patient (1 PRL) showed an initial TMZ response but tumor growth reoccurred while still receiving TMZ. MGMT status was <10%, and MSH6 was >10% before starting the treatment.

One patient with an ACTH tumor and Nelson's syndrome showed progression during TMZ treatment. MGMT status

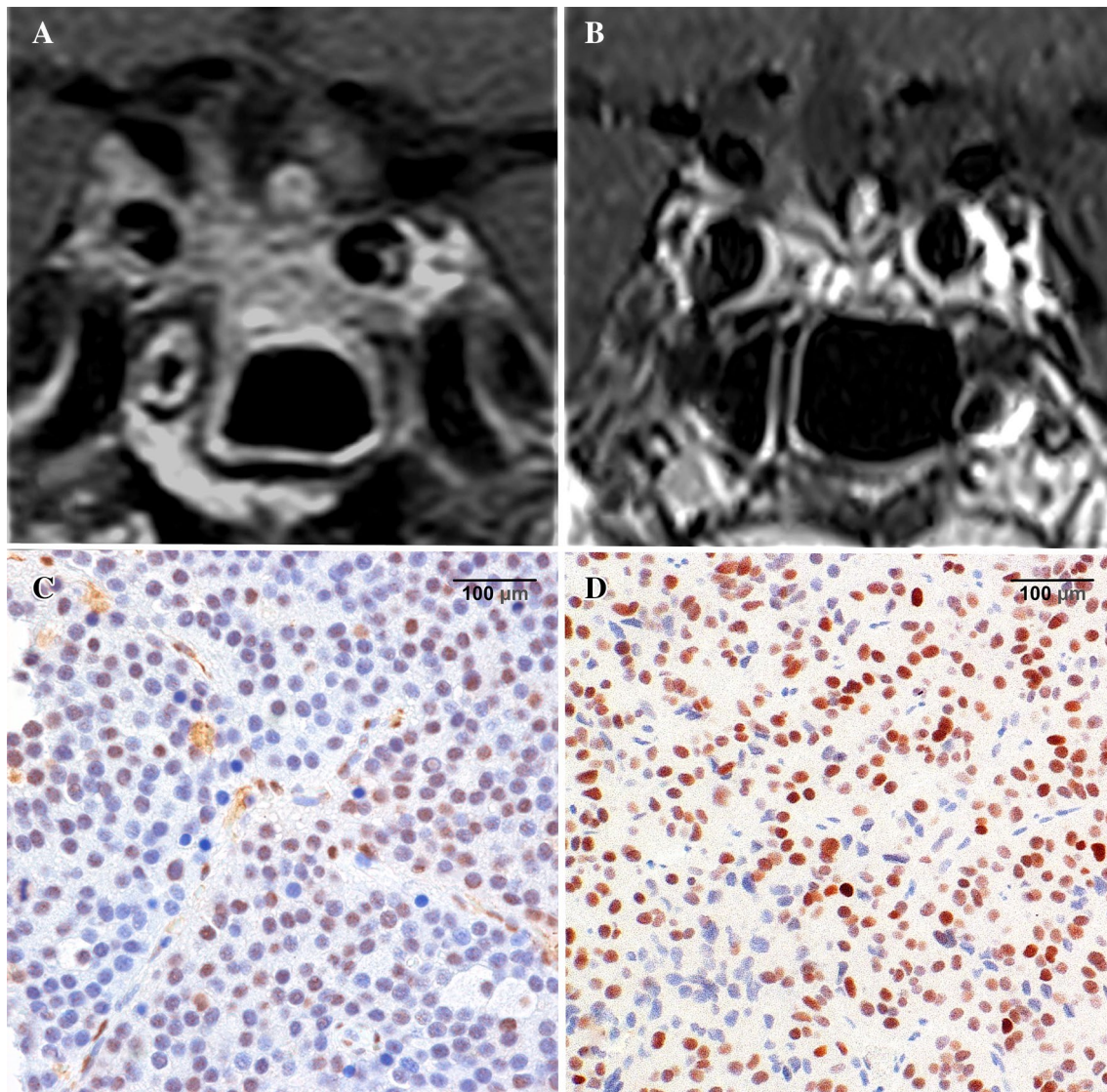
was >50%, and MSH6 was >10% before starting the treatment. In this patient, MGMT as well as MSH6 status, were equal to the time of the first operation and did not change over the follow-up period (Fig. 1).

In the case of one ACTH adenoma (initially silent corticotroph adenoma subtype 1, with high cortisol levels at the time of recurrence), the tumor showed a response to treatment. MGMT status was 25–50%, and MSH6 was >10% before starting the treatment (Fig. 2).



**Fig. 1** TMZ non-responder—Nelson tumor in a 55-year-old female patient. **a** Coronal MRI at the start of TMZ treatment shows recurrence of the invasive adenoma with high MIB-1 (13.8%) despite multimodal treatment (multiple transsphenoidal operations, 54 Gy external radiation, pasireotide therapy). **b** Coronal MRI 6 months after the first TMZ cycle; tumor regrowth occurred under therapy. Due to visual decline, TMZ was discontinued after 4 months and microsurgi-

cal partial resection of the tumor recurrence was performed by a sub-frontal approach. **c** MGMT IHC sample from the last operation before TMZ treatment shows high MGMT immunoreactivity (>50%)  $\times 40$  magnification. **d** MSH6 IHC sample from the last operation before TMZ treatment shows high MSH6 immunoreactivity (10–50%)  $\times 40$  magnification



**Fig. 2** TMZ responder—invasive silent corticotroph adenoma subtype 1 in a 58-year-old male patient. **a** Coronal MRI at the start of TMZ treatment shows adenoma recurrence despite multimodal treatment (multiple transphenoidal and subfrontal operations, pasireotide therapy). **b** Coronal MRI 6 months after the first TMZ cycle; although discontinued by the patient after 3 months due to side effects, a marked response to the TMZ treatment was found during

follow-up and basal cortisol levels dropped to the normal range. **c** MGMT IHC sample from the last operation before TMZ treatment shows moderate MGMT immunoreactivity (25–50%)  $\times 40$  magnification. **d** MSH6 IHC sample from the last operation before TMZ treatment shows high MSH6 immunoreactivity (>50%)  $\times 40$  magnification

## Discussion

Functioning pituitary macroadenomas that are progressive despite surgical, medical and radiation treatment may limit life expectancy by tumor mass effects and/or impact of hormone overproduction [28, 29]. To plan the frequency of radiological surveillance and additional treatment regimens, early detection of such aggressive adenoma behavior is therefore crucial.

In the present series of aggressive functioning macroadenomas we assessed the predictive value of the biological

markers MGMT and MSH6. Low-to-moderate MGMT immunoreactivity was significantly more common in patients with progressive disease than in patients in remission, whereas MSH6 did not differ between the groups.

Low-to-moderate MGMT immunoreactivity was also found to significantly correlate with surgical invasiveness of the tumor at the initial operation and may therefore be used as a potential indicator of more aggressive biological behavior.

## Predictive markers for aggressive adenoma behavior

The revision of the 2004 WHO classification defines atypical adenomas by the following histopathological criteria: MIB-1 proliferative index of >3%, elevated mitotic index, and extensive nuclear staining for p53 [30].

MIB-1 labelling index, the IHC staining of the cell cycle specific antigen Ki-67, has been shown to correlate with an increased growth rate and invasive growth [21, 31, 32]. Because a uniform correlation could not be found in all studies, it was suggested that MIB-1 alone has limited prognostic value to predict recurrence [33]. Additionally, an overlap of the MIB-1 labelling index was found between fast (<2 years tumor volume doubling time (TVDT)) and slow ( $\geq 2$  years TVDT) growing pituitary adenomas [34].

The current WHO classification does not include a clear cut-off for p53 or mitosis. Trouillas et al. proposed certain values in a French multicenter case–control study [26]. However, not all studies have found a correlation of excessive p53 immunoreactivity with increased proliferation and recurrence [35, 36].

In sum, the established markers only have limited value for prediction of aggressive adenoma behavior and alternative markers are therefore needed. In a previous study on non-functioning adenomas as well as based on our results from the current study we could show that low-to-moderate MGMT immunoreexpression correlates with early recurrence [27] and with invasiveness and recurrence in functioning pituitary adenomas which has been described by other authors [37–39]. Furthermore, in logistic regression analyses of all evaluated markers, low-to-moderate MGMT immunoreexpression was the only variable that remained independently significant for predicting invasiveness. However, invasiveness does not necessarily correlate with more aggressive behavior, as we have found 6 cases (16%) with signs of intraoperative invasiveness in the group ER.

Low MGMT immunoreexpression potentially increases mutagenesis, which may cause tumor formation and an increased cellular proliferation rate [40]. We therefore suggest evaluation of MGMT status as an additional marker to MIB-1 (as it still the only quantifiable marker adopted from the WHO) for predicting aggressive biological behavior.

## Stratification of MGMT immunoreexpression

To date, MGMT immunoreexpression has been assessed in pituitary adenomas for prediction of the response to TMZ treatment [41]. Differences in methodology of MGMT IHC and age of fixation (which may give false low MGMT immunoreexpression) are present so that a positive internal control must be present to report low MGMT immunoreexpression [15, 41, 42]. Therefore, MGMT should be performed in expert centers.

Furthermore, there has not been an agreement on the optimal stratification of MGMT immunoreexpression by IHC in the literature [10, 12, 37, 42, 43]. Most authors agree that a negative or low immunoreexpression should be defined as <10% of positively stained cells. Our data in functioning pituitary adenomas, taken together with the findings by Widhalm et al. in non-functioning adenomas, may suggest that MGMT expression <50% (low-to-moderate) could identify tumors with the potential for more aggressive biological behavior [27]. A recent large series of aggressive pituitary adenomas treated with TMZ reported a positive treatment response with the same cut-off value [19]. We therefore suggest including MGMT IHC in routine pituitary IHC analysis.

## Effect of radiation on MGMT immunoreexpression

It is not clear whether MGMT immunoreexpression is affected by radiation [12, 43–46]. Our results are in line with the literature that previous treatment and radiation increases MGMT immunoreexpression [47]. In our series, MGMT immunoreexpression changed after radiation therapy from low (<10%) to moderate/high (>10%) in 3/4 cases (75%) 2 ACTH and 1 PRL adenoma. In the remaining case (1 ACTH), MGMT immunoreexpression remained stable. GH adenomas did not necessitate any further surgery so that tumor samples were not available. A change of MGMT immunoreexpression pattern may be due to selection of more radio-resistant cell clones as shown in different cell lineages [48]. Therefore, we suggest that MGMT immunoreexpression should be reassessed at post-irradiation surgery.

## Prognostic value of MSH6

The MSH6 protein plays an important role in the DNA mismatch repair (MMR) pathway. This pathway is involved in the removal of DNA base mismatches caused either by errors in DNA replication or by DNA damage [49, 50]. Loss of DNA MMR, was found to facilitate the occurrence of mutations in genes controlling proliferation and/or apoptosis thus leading to an increased risk of cancer (Lynch syndrome) [51].

Deficiency in MSH6 has been found to cause resistance to TMZ and tumor progression irrespective of MGMT status in glioblastoma and in aggressive pituitary adenomas or carcinomas [16, 18, 51–53].

To define the prognostic value of MSH6 deficiency for prediction of recurrence and invasiveness in pituitary adenomas, we evaluated the MSH6 status in the present series. We found no difference in MSH6 immunonegativity between recurrent cases and patients in remission. However, MSH6 immunoreexpression did correlate with invasiveness, but failed to do so in a logistic regression.



## Limitations

The main limitation of the presented study is due to the inherent character of retrospective analysis, namely, selection bias, observer bias and data integrity. Although our single center data of functioning pituitary macroadenomas permitted us to fulfill the criteria of approximately equal follow-up period, patient age and gender distribution between the groups, an equal distribution of tumor size could not be reached because with larger tumor size, the likelihood of invasion rises [54, 55]. The situation is similar with GH adenoma granulation pattern, as sparsely granulated types tend to show a larger tumor size and more frequent signs of invasiveness than densely granulated adenomas [56]. This might confound the interpretation of our study findings.

## Conclusion

In our series, low-to-moderate MGMT immunorexpression was the only marker that significantly correlated with surgical invasiveness and recurrence in functioning pituitary macroadenomas. In the future, MGMT status may therefore be considered to be an additional marker for understanding the biological behavior of pituitary adenomas.

**Acknowledgements** Open access funding provided by Medical University of Vienna.

**Funding** This research did not receive any specific grant from any funding agency in the public, commercial or not-for-profit sector.

## Compliance with ethical standards

**Conflict of interest** All authors have no financial interest/arrangement or affiliation with one or more organizations that could be perceived as a real or apparent conflict of interest in the context of the article.

**Open Access** This article is distributed under the terms of the Creative Commons Attribution 4.0 International License (<http://creativecommons.org/licenses/by/4.0/>), which permits unrestricted use, distribution, and reproduction in any medium, provided you give appropriate credit to the original author(s) and the source, provide a link to the Creative Commons license, and indicate if changes were made.

## References

- Kaltsas GA, Mukherjee JJ, Plowman PN, Monson JP, Grossman AB, Besser GM (1998) The role of cytotoxic chemotherapy in the management of aggressive and malignant pituitary tumors. *J Clin Endocrinol Metab* 83(12):4233–4238. doi:10.1210/jcem.83.12.5300
- Park P, Chandler WF, Barkan AL, Orrego JJ, Cowan JA, Griffith KA, Tsien C (2004) The role of radiation therapy after surgical resection of nonfunctional pituitary macroadenomas. *Neurosurgery* 55(1):100–106 (discussion 106–107)
- Saeger W, Ludecke DK, Buchfelder M, Fahlbusch R, Quabbe HJ, Petersenn S (2007) Pathohistological classification of pituitary tumors: 10 years of experience with the German Pituitary Tumor Registry. *Eur J Endocrinol* 156(2):203–216. doi:10.1530/eje.1.02326
- Zada G, Woodmansee WW, Ramkissoon S, Amadio J, Nose V, Laws ER Jr (2011) Atypical pituitary adenomas: incidence, clinical characteristics, and implications. *J Neurosurg* 114(2):336–344. doi:10.3171/2010.8.JNS10290
- Asa SL, Casar-Borota O, Chanson P, Delgrange E, Earls P, Ezzat S, Grossman A, Ikeda H, Inoshita N, Karavitaki N, Korbonits M, Laws ER Jr, Lopes MB, Maartens N, McCutcheon IE, Mete O, Nishioka H, Raverot G, Roncaroli F, Saeger W, Syro LV, Vasiljevic A, Villa C, Wierinckx A, Trouillas J, the attendees of 14th Meeting of the International Pituitary Pathology Club, A.F.N. (2017) From pituitary adenoma to pituitary neuroendocrine tumor (PitNET): an International Pituitary Pathology Club proposal. *Endocr Relat Cancer* 24(4):C5–C8. doi:10.1530/ERC-17-0004
- Stupp R, Mason WP, van den Bent MJ, Weller M, Fisher B, Taphoorn MJ, Belanger K, Brandes AA, Marosi C, Bogdahn U, Curschmann J, Janzer RC, Ludwin SK, Gorlia T, Allgeier A, Lacombe D, Cairncross JG, Eisenhauer E, Mirimanoff RO, European Organisation for R., Treatment of Cancer Brain, T., Radiotherapy, G., National Cancer Institute of Canada Clinical Trials, G. (2005) Radiotherapy plus concomitant and adjuvant temozolomide for glioblastoma. *N Engl J Med* 352(10):987–996. doi:10.1056/NEJMoa043330
- Augustine CK, Yoo JS, Potti A, Yoshimoto Y, Zipfel PA, Friedman HS, Nevins JR, Ali-Osman F, Tyler DS (2009) Genomic and molecular profiling predicts response to temozolomide in melanoma. *Clin Cancer Res* 15(2):502–510. doi:10.1158/1078-0432.CCR-08-1916
- Ekeblad S, Sundin A, Janson ET, Welin S, Granberg D, Kindmark H, Dunder K, Kozlovacki G, Orlefors H, Sigurd M, Oberg K, Eriksson B, Skogseid B (2007) Temozolomide as monotherapy is effective in treatment of advanced malignant neuroendocrine tumors. *Clin Cancer Res* 13(10):2986–2991. doi:10.1158/1078-0432.CCR-06-2053
- Kovacs K, Scheithauer BW, Lombardero M, McLendon RE, Syro LV, Uribe H, Ortiz LD, Penagos LC (2008) MGMT immunorexpression predicts responsiveness of pituitary tumors to temozolomide therapy. *Acta Neuropathol* 115(2):261–262. doi:10.1007/s00401-007-0279-5
- McCormack AI, McDonald KL, Gill AJ, Clark SJ, Burt MG, Campbell KA, Braund WJ, Little NS, Cook RJ, Grossman AB, Robinson BG, Clifton-Bligh RJ (2009) Low O6-methylguanine-DNA methyltransferase (MGMT) expression and response to temozolomide in aggressive pituitary tumours. *Clin Endocrinol* 71(2):226–233. doi:10.1111/j.1365-2265.2008.03487.x
- Fealey ME, Scheithauer BW, Horvath E, Erickson D, Kovacs K, McLendon R, Lloyd RV (2010) MGMT immunorexpression in silent subtype 3 pituitary adenomas: possible therapeutic implications. *Endocr Pathol* 21(3):161–165. doi:10.1007/s12022-010-9120-0
- Bush ZM, Longtine JA, Cunningham T, Schiff D, Jane JA Jr, Vance ML, Thorne MO, Laws ER Jr, Lopes MB (2010) Temozolomide treatment for aggressive pituitary tumors: correlation of clinical outcome with O(6)-methylguanine methyltransferase (MGMT) promoter methylation and expression. *J Clin Endocrinol Metab* 95(11):E280–E290. doi:10.1210/jc.2010-0441
- Syro LV, Ortiz LD, Scheithauer BW, Lloyd R, Lau Q, Gonzalez R, Uribe H, Cusimano M, Kovacs K, Horvath E (2011) Treatment of pituitary neoplasms with temozolomide: a review. *Cancer* 117(3):454–462. doi:10.1002/cncr.25413

14. Moshkin O, Syro LV, Scheithauer BW, Ortiz LD, Fadul CE, Uribe H, Gonzalez R, Cusimano M, Horvath E, Rotondo F, Kovacs K (2011) Aggressive silent corticotroph adenoma progressing to pituitary carcinoma: the role of temozolomide therapy. *Hormones* 10(2):162–167
15. Raverot G, Castinetti F, Jouanneau E, Morange I, Figarella-Branger D, Dufour H, Trouillas J, Brue T (2012) Pituitary carcinomas and aggressive pituitary tumours: merits and pitfalls of temozolomide treatment. *Clin Endocrinol* 76(6):769–775. doi:10.1111/j.1365-2265.2012.04381.x
16. Cahill DP, Levine KK, Betensky RA, Codd PJ, Romany CA, Reavie LB, Batchelor TT, Futreal PA, Stratton MR, Curry WT, Iafrate AJ, Louis DN (2007) Loss of the mismatch repair protein MSH6 in human glioblastomas is associated with tumor progression during temozolomide treatment. *Clin Cancer Res* 13(7):2038–2045. doi:10.1158/1078-0432.CCR-06-2149
17. Yip S, Miao J, Cahill DP, Iafrate AJ, Aldape K, Nutt CL, Louis DN (2009) MSH6 mutations arise in glioblastomas during temozolomide therapy and mediate temozolomide resistance. *Clin Cancer Res* 15(14):4622–4629. doi:10.1158/1078-0432.CCR-08-3012
18. Hirohata T, Asano K, Ogawa Y, Takano S, Amano K, Isozaki O, Iwai Y, Sakata K, Fukuhara N, Nishioka H, Yamada S, Fujio S, Arita K, Takano K, Tominaga A, Hizuka N, Ikeda H, Osamura RY, Tahara S, Ishii Y, Kawamata T, Shimatsu A, Teramoto A, Matsuno A (2013) DNA mismatch repair protein (MSH6) correlated with the responses of atypical pituitary adenomas and pituitary carcinomas to temozolomide: the national cooperative study by the Japan Society for Hypothalamic and Pituitary Tumors. *J Clin Endocrinol Metab* 98(3):1130–1136. doi:10.1210/jc.2012-2924
19. Bengtsson D, Schroder HD, Andersen M, Maiter D, Berinder K, Feldt Rasmussen U, Rasmussen AK, Johannsson G, Hoybye C, van der Lely AJ, Petersson M, Ragnarsson O, Burman P (2015) Long-term outcome and MGMT as a predictive marker in 24 patients with atypical pituitary adenomas and pituitary carcinomas given treatment with temozolomide. *J Clin Endocrinol Metab* 100(4):1689–1698. doi:10.1210/jc.2014-4350
20. Murakami M, Mizutani A, Asano S, Katakami H, Ozawa Y, Yamazaki K, Ishida Y, Takano K, Okinaga H, Matsuno A (2011) A mechanism of acquiring temozolomide resistance during transformation of atypical prolactinoma into prolactin-producing pituitary carcinoma: case report. *Neurosurgery* 68(6):E1761–E1767. doi:10.1227/NEU.0b013e318217161a (discussion E1767)
21. Widhalm G, Wolfsberger S, Preusser M, Fischer I, Woehrer A, Wunderer J, Hainfellner JA, Knosp E (2009) Residual nonfunctioning pituitary adenomas: prognostic value of MIB-1 labeling index for tumor progression. *J Neurosurg* 111(3):563–571. doi:10.3171/2008.4.17517
22. Biller BM, Grossman AB, Stewart PM, Melmed S, Bertagna X, Bertherat J, Buchfelder M, Colao A, Hermus AR, Hofland LJ, Klibanski A, Lacroix A, Lindsay JR, Newell-Price J, Nieman LK, Petersenn S, Sonino N, Stalla GK, Swearingen B, Vance ML, Wass JA, Boscaro M (2008) Treatment of adrenocorticotropic-independent Cushing's syndrome: a consensus statement. *J Clin Endocrinol Metab* 93(7):2454–2462. doi:10.1210/jc.2007-2734
23. Katznelson L, Laws ER Jr, Melmed S, Molitch ME, Murad MH, Utz A, Wass JA, Endocrine S (2014) Acromegaly: an endocrine society clinical practice guideline. *J Clin Endocrinol Metab* 99(11):3933–3951. doi:10.1210/jc.2014-2700
24. Melmed S, Casanueva FF, Hoffman AR, Kleinberg DL, Montori VM, Schlechte JA, Wass JA, Endocrine S (2011) Diagnosis and treatment of hyperprolactinemia: an Endocrine Society clinical practice guideline. *J Clin Endocrinol Metab* 96(2):273–288. doi:10.1210/jc.2010-1692
25. Beck-Peccoz P, Lania A, Beckers A, Chatterjee K, Wemeau JL (2013) European thyroid association guidelines for the diagnosis and treatment of thyrotropin-secreting pituitary tumors. *Eur Thyroid J* 2(2):76–82. doi:10.1159/000351007
26. Trouillas J, Roy P, Sturm N, Dantony E, Cortet-Rudelli C, Vienne G, Bonneville JF, Assaker R, Auger C, Brue T, Cornelius A, Dufour H, Jouanneau E, Francois P, Galland F, Mougel F, Chapuis F, Villeneuve L, Maurage CA, Figarella-Branger D, Raverot G, members of H, Barlier A, Bernier M, Bonnet F, Borson-Chazot F, Brassier G, Caulet-Maugendre S, Chabre O, Chanson P, Cottier JF, Delemer B, Delgrange E, Di Tommaso L, Eimer S, Gaillard S, Jan M, Girard JJ, Lapras V, Loiseau H, Passagia JG, Patey M, Penfornis A, Poirier JY, Perrin G, Tabarin A (2013) A new prognostic clinicopathological classification of pituitary adenomas: a multicentric case-control study of 410 patients with 8 years post-operative follow-up. *Acta Neuropathol* 126(1):123–135. doi:10.1007/s00401-013-1084-y
27. Widhalm G, Wolfsberger S, Preusser M, Woehrer A, Kotter MR, Czech T, Marosi C, Knosp E (2009) O(6)-methylguanine DNA methyltransferase immunoreactivity in nonfunctioning pituitary adenomas: are progressive tumors potential candidates for temozolomide treatment? *Cancer* 115(5):1070–1080. doi:10.1002/cncr.24053
28. Sherlock M, Ayuk J, Tomlinson JW, Toogood AA, Aragon-Alonso A, Sheppard MC, Bates AS, Stewart PM (2010) Mortality in patients with pituitary disease. *Endocr Rev* 31(3):301–342. doi:10.1210/er.2009-0033
29. Sughrue ME, Chang EF, Gabriel RA, Aghi MK, Blevins LS (2011) Excess mortality for patients with residual disease following resection of pituitary adenomas. *Pituitary* 14(3):276–283. doi:10.1007/s11102-011-0308-1
30. DeLellis RA (2004) Pathology and genetics of tumours of endocrine organs. World Health Organization classification of tumours, vol 8. IARC Press, Lyon
31. Knosp E, Kitz K, Perneczky A (1989) Proliferation activity in pituitary adenomas: measurement by monoclonal antibody Ki-67. *Neurosurgery* 25(6):927–930
32. Mete O, Asa SL (2012) Clinicopathological correlations in pituitary adenomas. *Brain Pathol* 22(4):443–453. doi:10.1111/j.1750-3639.2012.00599.x
33. de Aguiar PH, Aires R, Laws ER, Isolan GR, Logullo A, Patil C, Katznelson L (2010) Labeling index in pituitary adenomas evaluated by means of MIB-1: is there a prognostic role? A critical review. *Neurol Res* 32(10):1060–1071. doi:10.1179/016164110X12670144737855
34. Hsu CY, Guo WY, Chien CP, Ho DM (2010) MIB-1 labeling index correlated with magnetic resonance imaging detected tumor volume doubling time in pituitary adenoma. *Eur J Endocrinol* 162(6):1027–1033. doi:10.1530/EJE-09-1100
35. Gejman R, Swearingen B, Hedley-Whyte ET (2008) Role of Ki-67 proliferation index and p53 expression in predicting progression of pituitary adenomas. *Hum Pathol* 39(5):758–766. doi:10.1016/j.humpath.2007.10.004
36. Kontogeorgos G (2006) Predictive markers of pituitary adenoma behavior. *Neuroendocrinology* 83(3–4):179–188. doi:10.1159/000095526
37. Takeshita A, Inoshita N, Taguchi M, Okuda C, Fukuhara N, Oyama K, Ohashi K, Sano T, Takeuchi Y, Yamada S (2009) High incidence of low O(6)-methylguanine DNA methyltransferase expression in invasive macroadenomas of Cushing's disease. *Eur J Endocrinol* 161(4):553–559. doi:10.1530/EJE-09-0414
38. Salehi F, Scheithauer BW, Kros JM, Lau Q, Fealey M, Erickson D, Kovacs K, Horvath E, Lloyd RV (2011) MGMT promoter methylation and immunoreactivity in aggressive pituitary adenomas and carcinomas. *J Neurooncol* 104(3):647–657. doi:10.1007/s11060-011-0532-6
39. Salehi F, Scheithauer BW, Moyes VJ, Drake WM, Syro LV, Manoranjan B, Sharma S, Horvath E, Kovacs K (2010) Low

- immunohistochemical expression of MGMT in ACTH secreting pituitary tumors of patients with Nelson syndrome. *Endocr Pathol* 21(4):227–229. doi:[10.1007/s12022-010-9138-3](https://doi.org/10.1007/s12022-010-9138-3)
40. McCormack A, Kaplan W, Gill AJ, Little N, Cook R, Robinson B, Clifton-Bligh R (2013) MGMT expression and pituitary tumours: relationship to tumour biology. *Pituitary* 16(2):208–219. doi:[10.1007/s11102-012-0406-8](https://doi.org/10.1007/s11102-012-0406-8)
  41. Annamalai AK, Dean AF, Kandasamy N, Kovacs K, Burton H, Halsall DJ, Shaw AS, Antoun NM, Cheow HK, Kiriollos RW, Pickard JD, Simpson HL, Jefferies SJ, Burnet NG, Gurnell M (2012) Temozolomide responsiveness in aggressive corticotroph tumours: a case report and review of the literature. *Pituitary* 15(3):276–287. doi:[10.1007/s11102-011-0363-7](https://doi.org/10.1007/s11102-011-0363-7)
  42. Raverot G, Sturm N, de Fraipont F, Muller M, Salenave S, Caron P, Chabre O, Chanson P, Cortet-Rudelli C, Assaker R, Dufour H, Gaillard S, Francois P, Jouanneau E, Passagia JG, Bernier M, Corneliu A, Figarella-Branger D, Trouillas J, Borson-Chazot F, Brue T (2010) Temozolomide treatment in aggressive pituitary tumors and pituitary carcinomas: a French multicenter experience. *J Clin Endocrinol Metab* 95(10):4592–4599. doi:[10.1210/jc.2010-0644](https://doi.org/10.1210/jc.2010-0644)
  43. Lau Q, Scheithauer B, Kovacs K, Horvath E, Syro LV, Lloyd R (2010) MGMT immunoexpression in aggressive pituitary adenoma and carcinoma. *Pituitary* 13(4):367–379. doi:[10.1007/s11102-010-0249-0](https://doi.org/10.1007/s11102-010-0249-0)
  44. McCormack AI, Wass JA, Grossman AB (2011) Aggressive pituitary tumours: the role of temozolomide and the assessment of MGMT status. *Eur J Clin Invest* 41(10):1133–1148. doi:[10.1111/j.1365-2362.2011.02520.x](https://doi.org/10.1111/j.1365-2362.2011.02520.x)
  45. Syro LV, Scheithauer BW, Ortiz LD, Fadul CE, Horvath E, Rotondo F, Kovacs K (2009) Effect of temozolomide in a patient with recurring oncocytic gonadotrophic pituitary adenoma. *Hormones* 8(4):303–306
  46. Kawashima ST, Usui T, Sano T, Iogawa H, Hagiwara H, Tamanaha T, Tagami T, Naruse M, Hojo M, Takahashi JA, Shimatsu A (2009) P53 gene mutation in an atypical corticotroph adenoma with Cushing's disease. *Clin Endocrinol* 70(4):656–657. doi:[10.1111/j.1365-2265.2008.03404.x](https://doi.org/10.1111/j.1365-2265.2008.03404.x)
  47. Wiewrodt D, Nagel G, Dreimuller N, Hundsberger T, Pernecky A, Kaina B (2008) MGMT in primary and recurrent human glioblastomas after radiation and chemotherapy and comparison with p53 status and clinical outcome. *Int J Cancer* 122(6):1391–1399. doi:[10.1002/ijc.23219](https://doi.org/10.1002/ijc.23219)
  48. Chen S, Zhang Y, Zhang D (2015) Endoplasmic reticulum protein 29 (ERp29) confers radioresistance through the DNA repair gene, O(6)-methylguanine DNA-methyltransferase, in breast cancer cells. *Sci Rep* 5:14723. doi:[10.1038/srep14723](https://doi.org/10.1038/srep14723)
  49. Acharya S, Wilson T, Gradia S, Kane MF, Guerrette S, Marsischky GT, Kolodner R, Fishel R (1996) hMSH2 forms specific mismatch-binding complexes with hMSH3 and hMSH6. *Proc Natl Acad Sci USA* 93(24):13629–13634
  50. Gradia S, Acharya S, Fishel R (2000) The role of mismatched nucleotides in activating the hMSH2-hMSH6 molecular switch. *J Biol Chem* 275(6):3922–3930
  51. Casorelli I, Russo MT, Bignami M (2008) Role of mismatch repair and MGMT in response to anticancer therapies. *Anticancer Agents Med Chem* 8(4):368–380
  52. Papouli E, Cejka P, Jiricny J (2004) Dependence of the cytotoxicity of DNA-damaging agents on the mismatch repair status of human cells. *Cancer Res* 64(10):3391–3394. doi:[10.1158/0008-5472.CAN-04-0513](https://doi.org/10.1158/0008-5472.CAN-04-0513)
  53. Hunter C, Smith R, Cahill DP, Stephens P, Stevens C, Teague J, Greenman C, Edkins S, Bignell G, Davies H, O'Meara S, Parker A, Avis T, Barthorpe S, Brackenbury L, Buck G, Butler A, Clements J, Cole J, Dicks E, Forbes S, Gorton M, Gray K, Halliday K, Harrison R, Hills K, Hinton J, Jenkinson A, Jones D, Kosmidou V, Laman R, Lugg R, Menzies A, Perry J, Petty R, Raine K, Richardson D, Shepherd R, Small A, Solomon H, Tofts C, Varian J, West S, Widaa S, Yates A, Easton DF, Riggins G, Roy JE, Levine KK, Mueller W, Batchelor TT, Louis DN, Stratton MR, Futreal PA, Wooster R (2006) A hypermutation phenotype and somatic MSH6 mutations in recurrent human malignant gliomas after alkylator chemotherapy. *Cancer Res* 66(8):3987–3991. doi:[10.1158/0008-5472.CAN-06-0127](https://doi.org/10.1158/0008-5472.CAN-06-0127)
  54. Brochier S, Galland F, Kujas M, Parker F, Gaillard S, Raftopoulos C, Young J, Alexopoulou O, Maiter D, Chanson P (2010) Factors predicting relapse of nonfunctioning pituitary macroadenomas after neurosurgery: a study of 142 patients. *Eur J Endocrinol* 163(2):193–200. doi:[10.1530/EJE-10-0255](https://doi.org/10.1530/EJE-10-0255)
  55. Micko AS, Wohrer A, Wolfsberger S, Knosp E (2015) Invasion of the cavernous sinus space in pituitary adenomas: endoscopic verification and its correlation with an MRI-based classification. *J Neurosurg* 122(4):803–811. doi:[10.3171/2014.12.JNS141083](https://doi.org/10.3171/2014.12.JNS141083)
  56. Cuevas-Ramos D, Carmichael JD, Cooper O, Bonert VS, Gertych A, Mamelak AN, Melmed S (2015) A structural and functional acromegaly classification. *J Clin Endocrinol Metab* 100(1):122–131. doi:[10.1210/jc.2014-2468](https://doi.org/10.1210/jc.2014-2468)