

RESEARCH ARTICLE

# Coronary endothelial function is better in healthy premenopausal women than in healthy older postmenopausal women and men

Lena Mathews<sup>1</sup>, Micaela Iantorno<sup>1</sup>, Michael Schär<sup>2</sup>, Gabriele Bonanno<sup>1,2</sup>, Gary Gerstenblith<sup>1</sup>, Robert G. Weiss<sup>1,2</sup>, Allison G. Hays<sup>1\*</sup>

**1** Department of Medicine, Division of Cardiology, Johns Hopkins School of Medicine, Baltimore, Maryland, United States of America, **2** Department of Radiology, Division of Magnetic Resonance Research, Johns Hopkins School of Medicine, Baltimore, Maryland, United States of America

\* [ahays2@jhmi.edu](mailto:ahays2@jhmi.edu)



OPEN ACCESS

**Citation:** Mathews L, Iantorno M, Schär M, Bonanno G, Gerstenblith G, Weiss RG, et al. (2017) Coronary endothelial function is better in healthy premenopausal women than in healthy older postmenopausal women and men. PLoS ONE 12 (10): e0186448. <https://doi.org/10.1371/journal.pone.0186448>

**Editor:** Carmine Pizzi, University of Bologna, ITALY

**Received:** May 8, 2017

**Accepted:** September 15, 2017

**Published:** October 26, 2017

**Copyright:** © 2017 Mathews et al. This is an open access article distributed under the terms of the [Creative Commons Attribution License](https://creativecommons.org/licenses/by/4.0/), which permits unrestricted use, distribution, and reproduction in any medium, provided the original author and source are credited.

**Data Availability Statement:** All relevant data are within the paper.

**Funding:** This work was supported by the National Institutes of Health (HL120905, HL61912), the American Heart Association (11SDG5200004), the Johns Hopkins PJ Schafer Award, and the Clarence Doodeman Endowment of Johns Hopkins. Dr. Mathews was supported by Grant Number T32 HL007024 from the National Heart, Lung, and Blood Institute, National Institutes of Health. The funders had no role in study design, data collection

## Abstract

### Background

Premenopausal women have fewer cardiovascular disease (CVD) events than postmenopausal women and age-matched men, but the reasons are not fully understood. Coronary endothelial function (CEF), a barometer of coronary vascular health, promises important insights into age and sex differences in atherosclerotic CVD risk, but has not been well characterized in healthy individuals because of the invasive nature of conventional CEF measurements. Recently developed magnetic resonance imaging (MRI) methods were used to quantify CEF (coronary area and flow changes in response to isometric handgrip exercise (IHE), an endothelial-dependent stressor) to test the hypothesis that healthy women have better CEF compared to men particularly at a younger age.

### Methods

The study participants were 50 healthy women and men with no history of coronary artery disease (CAD) or traditional CV risk factors and Agatston coronary calcium score (on prior CT) <10 for those ≥ 50 years. Coronary cross-sectional area (CSA) measurements and flow-velocity encoded images (CBF) were obtained at baseline and during continuous IHE using 3T breath-hold cine MRI-IHE. CEF (%change in CSA and CBF with IHE) comparisons were made according to age and sex, and all women ≥50 years were post-menopausal.

### Results

In the overall population, there were no differences in CEF between men and women. However, when stratified by age and sex the mean changes in CSA and CBF during IHE were higher in younger premenopausal women than older postmenopausal women (%CSA: 15.2 ±10.6% vs. 7.0±6.8%, p = 0.03 and %CBF: 59.0±37.0% vs. 30.5±24.5% p = 0.02). CBF

and analysis, decision to publish, or preparation of the manuscript.

**Competing interests:** The authors have declared that no competing interests exist.

change was also nearly two-fold better in premenopausal women than age-matched men ( $59.0 \pm 37.0\%$  vs.  $33.6 \pm 12.3\%$ ,  $p = 0.03$ ).

## Conclusions

Premenopausal women have nearly two-fold better mean CEF compared to postmenopausal women. CEF, measured by CBF change is also better in premenopausal women than age-matched men but there are no sex differences in CEF after menopause. Fundamental age and sex differences in CEF exist and may contribute to differences in the development and clinical manifestations of atherosclerotic CVD, and guide future trials targeting sex-specific mechanisms of atherogenesis.

## Introduction

Despite declines in cardiovascular disease (CVD) mortality rates in the United States over the past several decades, CVD is still the leading cause of morbidity and mortality in women [1]. While premenopausal women have a low prevalence of CVD, there is a marked increase in cardiovascular risk in women after menopause [2, 3]. However, controversy exists as to whether this increased risk is due to the effect of aging alone or as a consequence of the cardio-metabolic and vascular changes that occur during menopause [4, 5]. Therefore, it is critical to better understand the mechanisms contributing to the rapid and adverse changes in CVD risk that occur as women reach menopause [6, 7] as they may guide new practical preventive and treatment approaches in this at-risk population.

Endothelial function is considered a marker of vascular health and, as such, may provide important insights into the mechanisms contributing to the development and progression of atherosclerosis with menopause [8]. Although normal endothelial function is impaired by both traditional and non-traditional CVD risk factors [9], responds favorably to risk factor modification [10], and predicts future cardiovascular events [11], studies of sex differences in endothelial function are conflicting. Some lines of research show that peripheral endothelial function measured by flow mediated vasodilation (FMD) of the brachial artery decreases with age in a gradual manner in men beginning in the fifth decade, while it remains preserved in young women followed by a more rapid decline in postmenopausal women in the sixth decade [12, 13]. However, other studies of peripheral endothelial function have not shown sex differences in systemic vasodilation and demonstrate only an age-related decline [14–17].

Impaired coronary endothelial function (CEF) plays an important role in the development of coronary atherosclerosis [18, 19], and predicts CVD events [11, 20–23]. However, it has not been well characterized in healthy populations largely due to the invasive nature of conventional approaches used to measure CEF [24]. In addition, current coronary imaging methods document anatomic coronary atherosclerosis that has developed over years, but there has not been a noninvasive means to quantify the central, early mechanisms contributing to the pathogenesis of coronary artery disease (CAD) such as coronary endothelial dysfunction. Moreover, measures of coronary and systemic endothelial function are not strongly related possibly due to differences in vascular biology between the two arterial beds [25, 26].

Recently, noninvasive measures of CEF were developed using magnetic resonance imaging (MRI). The approach measures changes in coronary artery lumen area and blood flow in response to isometric handgrip exercise (IHE), an endothelial dependent stressor [27–30]. The MRI-detected coronary responses were shown to be nitric oxide (NO)-dependent, thus

indicative of CEF, and reproducible, offering a window into the pathogenesis of sex differences in atherosclerosis development [27, 30].

Despite prior invasive studies showing a high incidence of coronary endothelial dysfunction in women presenting with chest pain with non-obstructive CAD [23, 31], the role that abnormal CEF plays with regards to sex differences at earlier stages of atherosclerotic disease, particularly in asymptomatic healthy individuals is not well understood. We therefore used MRI to non-invasively quantify CEF to test the hypotheses that in healthy asymptomatic individuals with no known CAD, CEF is better in younger premenopausal women than in age-matched men and that sex differences in CEF are no longer present in older men vs. age-matched postmenopausal women.

## Materials and methods

### Participants

All participants provided written informed consent, the protocol was approved by The Johns Hopkins Medicine Institutional Review Board, and all clinical investigation was conducted according to the principles expressed in the Declaration of Helsinki. The participants were 50 healthy men and women recruited at the Johns Hopkins Hospital. The participants were defined as healthy if they were < 50 years old without a history of CAD, no more than 1 traditional cardiovascular risk factor, and a 10-year ASCVD risk estimate of less than 5% on the pooled cohort equation [32]. In addition, participants who were  $\geq 50$  years of age had an Agatston coronary artery calcium score of < 10, or no more than mild luminal stenosis on a prior computed tomography scan [33]. Participants were excluded if they had insulin-dependent diabetes mellitus, were smokers, or were on hormone replacement therapy. All women over the age of 50 were postmenopausal defined as at least 12 months of amenorrhea [34]. No participant had a contraindication to MRI.

### Study protocol

Coronary MRI was performed using a commercial human 3.0 Tesla (T) MR scanner (Achieva, Philips, Best, NL) with a 32-element cardiac coil for signal reception. All participants were in a fasting state. Images were obtained perpendicular to a proximal, straight segment of the coronary artery best identified on double oblique scout scan as previously reported [35]. The imaging plane for the endothelial function measurements was localized in a proximal or mid coronary arterial segment that was straight over a distance of approximately 2.0 cm. In some cases, when both arteries displayed equivalent image quality, two coronary arteries per participant were imaged and the mean of the two values was used. Baseline imaging at rest for cross-sectional coronary artery area (CSA) measurements was followed by coronary flow velocity-encoded MRI using single breath-hold cine sequences [36] as previously reported [37]. The endpoints CSA, coronary flow velocity (CFV) and blood flow (CBF) were quantified before and during isometric handgrip exercise (IHE). Each participant performed continuous IHE using an MRI-compatible dynamometer (Stoelting, Wood Dale, IL, USA) for approximately 5–6 minutes at 30% of their maximum handgrip strength while under direct supervision to ensure compliance [38, 39].

Heart rate and blood pressure were measured throughout the study using a non-invasive and MRI-compatible ECG and calf blood pressure monitor (Invivo, Precess, Orlando, FL, USA). The rate pressure product (RPP) was calculated as systolic blood pressure x heart rate. Detailed MR parameters have been previously published [27]. The primary outcomes measured were percent change in CSA and CBF with IHE.

## Image analysis

Images were analyzed for coronary CSA at rest and stress using a semi-automated software tool (Cine version 3.15.17, General Electric, Milwaukee, WI, USA) by two independent readers who were blinded to the subject's age. A circular region-of-interest was traced around the coronary artery in diastole during the period of least coronary motion, and a computer algorithm employed an automated full width half maximum algorithm for the cross-sectional coronary area measurements.

For CBF measurements, images were analyzed using commercially available software (FLOW Version 3.0, Medis, NL). Peak diastolic coronary flow velocity was used for the velocity measurements and peak diastolic coronary artery blood-flow was calculated and converted to the units mL/minute as previously reported [40].

## Statistical analysis

Statistical analysis was performed using Stata software version 14.2 (StataCorp, College Station, Texas). The average of the values was used when more than one coronary artery segment in a participant was imaged. Data were tested for normality using the Shapiro-Wilk test, and the data were normally distributed. Student's paired *t*-tests were used to compare baseline and stress coronary artery CSA, CFV, and CBF measurements for each group. ANOVA (with Bonferroni correction for multiple groups) was used to test for between group comparisons for the primary endpoints % change in CSA, CFV and CBF with IHE, and Student's unpaired *t*-tests were used to compare the CEF endpoints between individual groups (grouped according to sex and age). Age was treated as a binary variable with a cutoff of < 50 and  $\geq$  50 years. Statistical significance was defined as a two-tailed *p*-value < 0.05. To examine whether there was a relationship between baseline CSA and %CSA change with IHE, linear regression analysis was performed between the dependent variable %CSA change and the independent variable baseline CSA. Baseline characteristics and data are expressed as mean  $\pm$  standard deviation.

## Results

All participants completed the MRI study. Overall there were a total of 50 participants, 20 men with a mean age  $44.1 \pm 16.4$  years and 30 women with a mean age  $49.8 \pm 16.7$  years. Overall women had lower estimated 10 year ASCVD risk compared to men ( $4.2 \pm 2.5\%$  vs.  $8.6 \pm 5.3\%$   $p = 0.04$ ). The baseline characteristics of the study population are presented in [Table 1](#). Representative coronary images for area and blood velocity are shown in [Fig 1](#). The hemodynamic effects of isometric handgrip stress in women versus men are presented in [Table 2](#).

## Coronary vasodilation

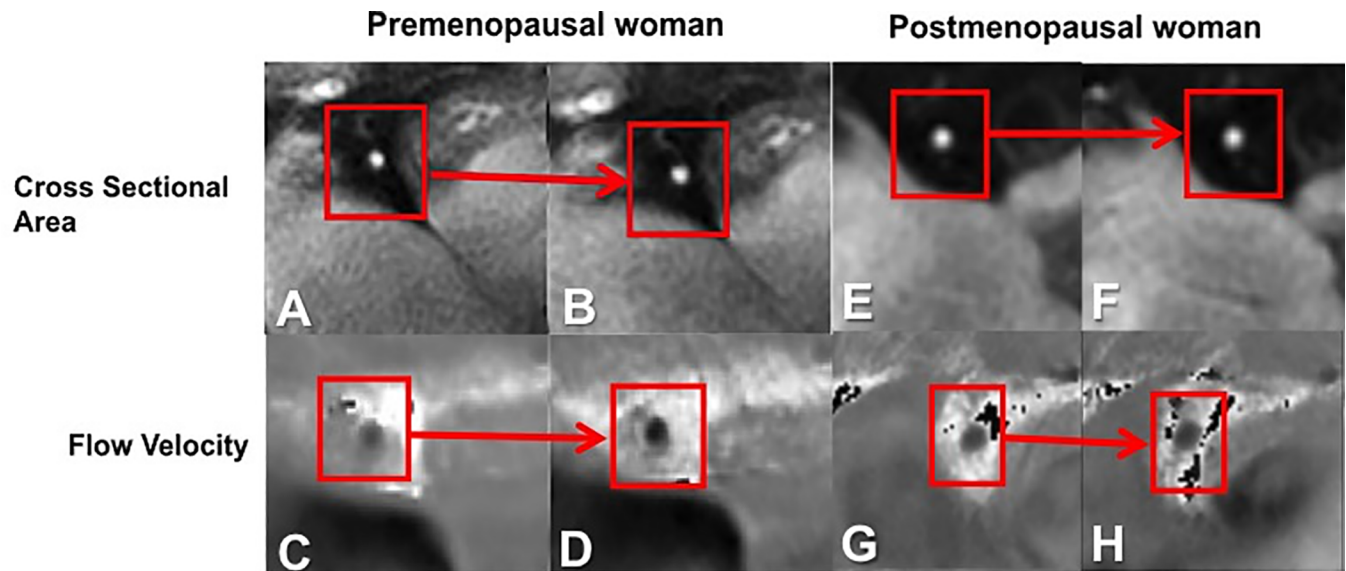
Coronary arteries dilated with IHE in both healthy men and women. In men baseline CSA was  $13.4 \pm 4.6$  mm<sup>2</sup> and increased  $8.8 \pm 5.2\%$  with IHE ( $p < 0.001$  stress vs. baseline). In women baseline CSA was  $10.7 \pm 2.6$  mm<sup>2</sup>, and increased  $11.4 \pm 9.6\%$  with IHE ( $p < 0.001$  stress vs. baseline). Men had greater CSA at baseline than women ( $p = 0.01$ ). In the overall population, although % CSA and %CBF changes trended higher for women compared to men, there was no statistically significant difference in CEF between the two groups overall ( $p = 0.30$  for %CSA change,  $p = 0.13$  for %CBF change). However, when stratified by age (<50 and  $\geq$ 50 years) and sex, the mean change in %CSA for women <50 years was  $15.2 \pm 10.6\%$ , which was significantly higher than that for women  $\geq$ 50 years ( $7.0 \pm 6.8\%$ ,  $p = 0.02$ ) and for men  $\geq$ 50 years ( $7.6 \pm 3.6\%$   $p = 0.05$ , [Fig 2A](#)). Although the %CSA change in younger women (<50 years:  $15.2 \pm 10.6\%$ ) trended higher than the %CSA change in age matched men (men <50:  $9.6 \pm 6.4\%$ ), the difference was

**Table 1. Baseline characteristics of the study participants.**

Characteristics	Men (n = 20)	Women (n = 30)	P value
Age (years), mean (SD)	44.1 (16.4)	49.8(16.7)	0.24
<50 years, N	11	16	
≥50 years, N	9	14	
BMI kg/m <sup>2</sup> mean (SD)	27.0(4.7)	27.0(5.7)	0.99
Hypertension, N (%)	3 (14)	3 (11)	0.54
Hyperlipidemia, N (%)	2 (10)	3 (11)	0.91
10 Year ASCVD risk estimate (%)	8.6 (5.3)	4.2 (2.5)	0.04
ASCVD risk, age <50 years	3 (3.5)	2.7 (1.5)	0.91
ASCVD risk, age ≥50 years	9.9 (4.8)	5.2 (2.3)	0.03
Ever smoker, N (%)	0 (0)	0 (0)	N/A
Statin, N (%)	2 (10)	3 (10)	0.91
Hormone replacement therapy, N(%)	N/A	0(0)	N/A
Oral contraceptive use, N(%)†	N/A	7(44)	N/A
Coronary segments studied			
LAD	6	6	0.44
RCA	7	17	0.14
RCA and LAD	7	7	0.39

Values are expressed as mean and standard deviation, unless otherwise specified. SD = standard deviation, BMI = body mass index, ASCVD = atherosclerotic cardiovascular disease risk score derived from pooled cohort equation of the American Heart Association and American College of Cardiology, † Oral contraceptive use in premenopausal women.

<https://doi.org/10.1371/journal.pone.0186448.t001>



**Fig 1. Representative coronary artery images for cross sectional area and blood velocity.** Example in a healthy premenopausal woman demonstrating a right coronary artery (RCA) cross section (A) at rest (B) and during isometric handgrip exercise (IHE) showing vasodilation. Magnified flow velocity image of the RCA in the same subject is shown at rest (C) and during IHE (D) in diastole, wherein the signal phase is proportional to flow velocity with the darker pixels during IHE indicating higher velocity in the caudal direction through the RCA. Example in a healthy postmenopausal woman of the RCA cross section (E) at rest (F) and during IHE showing no vasodilation. Flow velocity image of the RCA in the same postmenopausal subject is shown at rest (G) and during IHE (H) in diastole, wherein the signal darkness does not increase during IHE as it does in the younger healthy subject.

<https://doi.org/10.1371/journal.pone.0186448.g001>

**Table 2. Hemodynamic effect of isometric handgrip stress.**

Hemodynamic variable (mean and standard deviation)	Men	Women	P value for difference
Baseline systolic blood pressure (mmHg)	129.2(16.6)	133.9(16.0)	P = 0.32
Baseline diastolic blood pressure (mmHg)	66.6(10.6)	66.6(11.6)	P = 1.00
Stress systolic blood pressure (mmHg)	143.1(19.7)	144.6(19.8)	P = 0.79
Stress diastolic blood pressure (mmHg)	77.2(13.0)	78.5(12.8)	P = 0.72
Baseline heart rate (bpm)	66.9(10.7)	66.0(8.1)	P = 0.73
Stress heart rate (bpm)	80.3(11.4)	77.4(8.3)	P = 0.32
Baseline rate pressure product (mmHg*bpm)	8602.3(1511.7)	8825.1(1510.7)	P = 0.61
Stress rate pressure product (mmHg*bpm)	11,458.2(2084.6)	11,187.2(1945.6)	P = 0.64
Rate pressure product change, % (SD)	33.9(15.3)	28.1(21.3)	P = 0.30

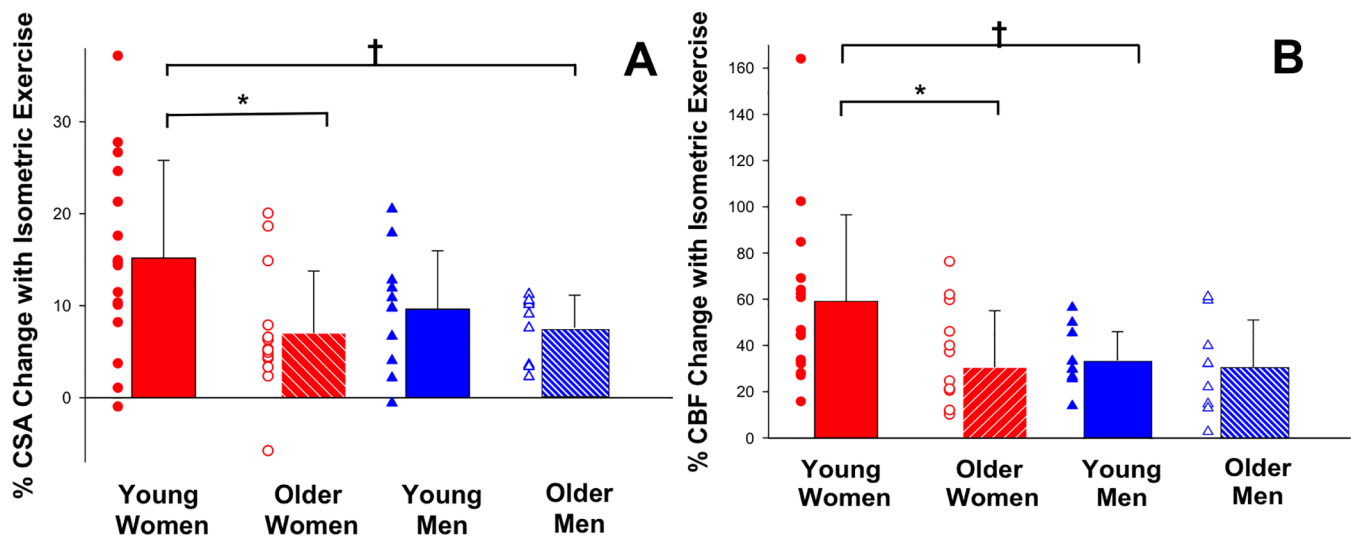
The values are represented as mean and standard deviation. BPM = beats per minute.

<https://doi.org/10.1371/journal.pone.0186448.t002>

not statistically significant ( $p = 0.13$ ). In the older age-matched groups (women and men  $\geq 50$  years), %CSA change was similar between groups (%CSA women:  $7.0 \pm 6.8\%$  vs. men:  $7.6 \pm 3.6\%$ ,  $p = 0.6$ ). The %CSA change in younger vs. older men was not significantly different. Younger vs. older women had similar baseline coronary area ( $10.4 \pm 2.6\text{mm}$  vs.  $10.9 \pm 2.8\text{mm}$ ,  $p = 0.57$ ). Fig 3A. Using linear regression, there was no significant relationship between baseline CSA and %CSA change with IHE in the group overall ( $R = -0.16$ ,  $p = 0.26$ , Fig 3B.)

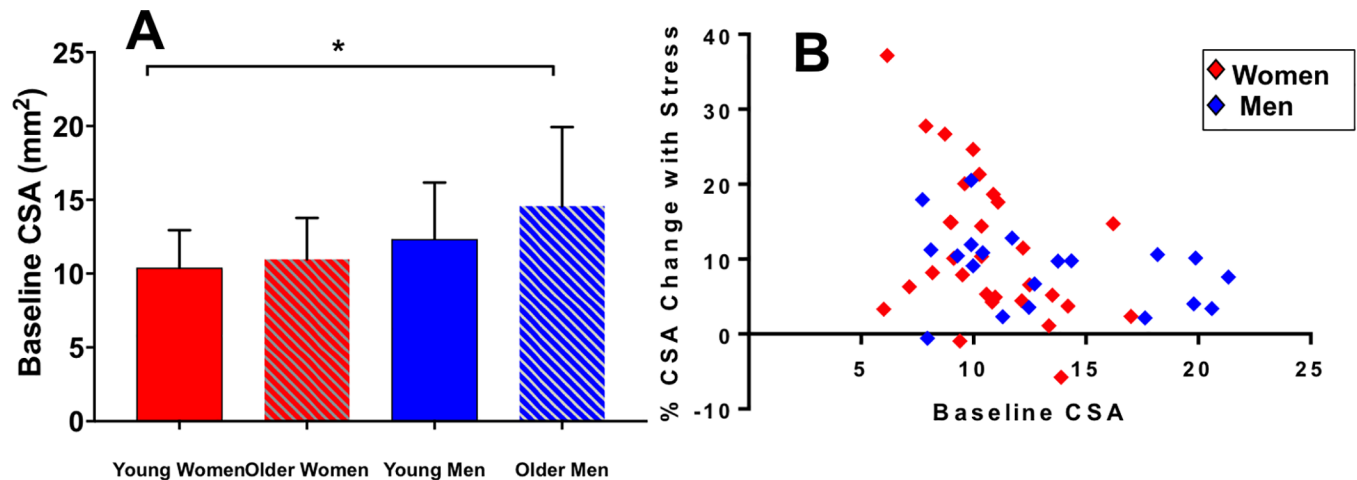
### Coronary flow velocity and coronary blood flow measures

Peak diastolic coronary flow velocity increased with IHE in both men and women. In men, baseline CBF was  $50.6 \pm 25.0$  ml/min and increased  $33.3 \pm 16.1\%$  with IHE ( $p < 0.001$  baseline vs. stress). In women baseline CBF was  $38.6 \pm 24.3$  ml/min and increased  $44.3 \pm 34.1\%$  ( $p < 0.001$



**Fig 2. Change in coronary cross sectional area and blood flow with isometric handgrip stress (IHE).** (A) Individual data points of relative changes in coronary vasoreactive parameters with IHE are shown for healthy subjects of both sexes (by age  $< 50$  years and  $\geq 50$  years) for % CSA (coronary cross sectional area) in response to IHE. Bars represent mean  $\pm$  SD. There was a significant difference in %CSA change between healthy young and healthy older women and men (\*  $p = 0.03$ , †  $p = 0.05$ ). (B) Individual data points of relative changes in coronary endothelial function are shown for healthy participants grouped by age and sex for % CBF (coronary blood flow) change in response to IHE. Bars represent mean  $\pm$  SD. The %CBF change for healthy young women was significantly higher compared to healthy older women and healthy young men (\*  $p = 0.02$  †  $p = 0.03$ ).

<https://doi.org/10.1371/journal.pone.0186448.g002>



**Fig 3.** Baseline coronary cross sectional area. (A) Summary data for baseline CSA (coronary cross sectional area), showing mean  $\pm$  SD (error bars) for four groups: younger women, older women, younger men and older men. The baseline CSA is higher in older men compared to younger women ( $*p = 0.01$ ). Correlation of baseline cross sectional area with percent change in cross sectional area by sex (B) There was no significant relationship between baseline CSA and % CSA change for women (red diamonds) and men (blue diamonds).

<https://doi.org/10.1371/journal.pone.0186448.g003>

baseline vs. stress). There was no significant difference in baseline resting CBF between men and women, nor among any of the four subgroups. Percent change in CBF with IHE trended higher for women than men overall, but the difference was not statistically significant. When stratified by age and sex, the mean change in %CBF for women  $<50$  years was  $59.0 \pm 37.0\%$ , which was nearly two-fold higher than that in women  $\geq 50$  years ( $30.5 \pm 24.5\%$ , Fig 2B,  $p = 0.02$ ). In addition, %CBF change in younger women ( $<50$  years) was higher than the %CBF change in age matched men (men  $<50$  years:  $33.6 \pm 12.3\%$ ,  $p = 0.03$  vs. women  $<50$ ). In contrast, in the older age-matched groups (women and men  $\geq 50$  years), the %CBF change was similar between groups (%CBF women:  $30.5 \pm 24.5\%$  vs. men:  $30.8 \pm 20.2\%$ ,  $p = 0.95$ ). There were no significant differences in %CBF change between younger and older men. Results were not different after excluding outliers that were  $>2$  SD from the mean. Finally, the results of the primary CEF endpoints, IHE-induced %CSA and %CBF were the same when analyzed on a per-segment or per-patient basis.

## Discussion

Using noninvasive MRI measures of CEF, we observed that in a cohort of healthy individuals with no CAD, and no more than one conventional cardiovascular risk factor, young premenopausal women have two-fold better measures of CEF compared to healthy postmenopausal women. In addition, healthy postmenopausal women have measures of CEF that are comparable to men of all ages. Despite conflicting data on sex differences in peripheral vascular function with aging [12, 13], this study is the first to document sex differences in coronary endothelial function in healthy, asymptomatic individuals and shows that the coronary vasoactive NO-mediated responses are nearly two-fold higher in younger women than in older women and men. Our study complements studies of peripheral endothelial function but adds critical knowledge of the underlying fundamental differences in vascular biology between the coronary and peripheral circulation [25, 41]. Traditionally, invasive techniques have limited the assessment of CEF in low risk populations; therefore our non-invasive MRI measures of CEF in healthy, asymptomatic individuals [27] offer a unique window into the pathogenesis of sex differences in coronary vascular function.

The CEF measures reported in the current study are consistent with those previously described using non-invasive MRI measures [27, 29]. This MRI CEF technique was shown to be reproducible over the short and longer term with good inter and intra-observer variability [27, 29, 30]. Moreover, we previously showed that the NO synthase inhibitor monomethyl-L-arginine (L-NMMA) [30] prevents the normal IHE-induced increases in CSA and CBF during IHE, providing strong evidence that the coronary responses to IHE measured by MRI primarily reflect endothelial NO-mediated CEF. We now show for the first time that significant sex differences in NO-mediated coronary cross sectional area and blood flow to endothelial-dependent stressors are present in healthy individuals.

Prior invasive studies showed that sex differences exist in atherosclerotic vascular remodeling [42] and in coronary endothelial dysfunction in patients presenting with angina [31]. In the Women's Ischemia Syndrome Evaluation (WISE) study two thirds of women referred for invasive coronary angiography for chest pain had normal coronaries or only mild non-obstructive CAD [43–45]. Moreover in individuals with early CAD referred for invasive coronary angiography, men tended to have more eccentric atheroma than women, while women had more diffuse epicardial coronary endothelial dysfunction. [45, 46] Abnormal CEF in the setting of non-obstructive CAD is strongly associated with adverse CV outcomes in women presenting with ischemia [23]. However, ours is the first study to demonstrate significant sex differences in CEF in a healthy population and that those differences are present only in younger individuals (<50 years). Our observations that measures of CEF (CSA and CBF) are better in younger women, compared to older women and CBF is better in younger women compared to age matched men are consistent with prior epidemiological observational studies showing that premenopausal women are protected from cardiovascular events compared to men of similar ages but that after menopause the sex disparities in CVD morbidity and mortality diminishes [3]. CVD remains the leading cause of mortality in women particularly after menopause, and this is hypothesized to be due to the loss of the protective effect of estrogen [47, 48]. A recent study showed that women who experience premature menopause have a higher risk of CVD mortality than do women who experience menopause later in life; therefore, the higher CV risk in women is less likely an aging effect alone [6]. Despite randomized controlled studies not showing a benefit of HRT after menopause for the primary prevention of CVD, substantial evidence has accumulated on the benefits of HRT for women who experience premature menopause, or in women who are younger than 60 years [49, 50]. In addition, primary prevention measures are rarely instituted in women of postmenopausal age who are asymptomatic and without risk factors due to underestimation of women's risk with standard CV risk calculators [51, 52]. Importantly, the mean ASCVD risk score in our population of postmenopausal women was 5.2%, which is considered low risk. Nevertheless, CEF was impaired in these postmenopausal women compared to premenopausal women and was similar to CEF of age-matched men with a higher ASCVD risk score (9.9%). This suggests the possibility that noninvasive measures of CEF may have additive value compared to standard CV risk assessment by documenting abnormalities in CEF in selected populations who are not identified by current risk assessment tools.

Our study detected significant differences in CBF change with IHE between healthy women and men less than 50 years of age. In addition we found that younger women had higher percent change in %CSA compared to younger men however the difference was not significant possibly limited by the number of participants. Changes in CSA with IHE in general reflect macrovascular endothelial reactivity, whereas CBF change reflects both macro and microvascular reactivity. The fact that there was a larger but non-significant difference in %CSA but a significant difference in %CBF change between younger women and men suggests that both macrovascular and microvascular reactivity may play an important role in sex differences in



the development of atherosclerosis in younger people. Microvascular CEF is affected by more global factors influencing downstream resistance vessels, whereas stress-induced change in CSA reflects epicardial coronary vasodilatation, which is more closely related to local factors such as anatomic remodeling and atherosclerotic disease [28]. Taken together, fundamental differences exist in coronary artery pathophysiology between men and women, even at an early stage.

Initially two-fold better blood flow-related CEF in younger women is lower in older women when compared with men after age 50, possibly due to the hormonal changes that take place during menopause [47, 53, 54], although this was not specifically tested in this study. Moreover, the significant difference in CEF observed between younger and older, postmenopausal women cannot be explained by differences in baseline coronary area, as they were very similar. Epidemiological research has shown that women generally develop CVD 10 years later than men possibly due to the protective effects of estrogen [3, 55]. The perimenopausal period may be associated with rapid adverse changes in coronary endothelial function. Menopause is generally associated with an acceleration of CV risk that begins during the perimenopausal transition [56]. Therefore, this study provides a basis for future investigation into the question of whether the noninvasive assessment of CEF is an important tool to guide more intensive evidence-based primary prevention strategies in healthy postmenopausal women who would otherwise be considered low risk on traditional risk assessment calculators [52] and studying novel therapeutic interventions to improve coronary endothelial function.[57–61]

## Study limitations

The sample size was relatively small, however it was sufficient to identify significant differences in CEF between healthy younger and older women. The non-significant trend in higher %CSA change between young men and women could have been due to the small sample size and future studies with large samples sizes may detect a difference. In addition, the groups were well-matched with regards to BMI and risk factors. Our study was observational; therefore we are unable to determine causality. In the future, a longitudinal study of CEF before and during the menopausal transition may provide more insights into the relative roles of age and menopause in reducing CEF than is possible with a cross-sectional design. A more complete understanding of the role of menopause would also be provided by studies in women with premature menopause. In addition, we did not study a broad age range of participants, which merits study in a larger population. Future studies can further examine in longitudinal fashion how quickly CEF deteriorates over time and how estrogen loss and replacement influences CEF, as the technique is safe, reproducible and therefore well suited to repeated studies in low-risk individuals.

## Conclusion

Our findings show that healthy premenopausal women who are younger than 50 years old have nearly two-fold better CEF measures than that of healthy postmenopausal women who are older than 50 years. In contrast, younger and older men have comparable CEF to that of postmenopausal women. These results are consistent with those reported previously in studies of peripheral artery endothelial function and suggest that the increase in traditional CVD risk that develops after menopause in women coincides with adverse changes in coronary endothelial function in otherwise healthy people. Our findings may also be useful for sex-specific risk assessment of asymptomatic but at risk individuals and can potentially inform larger trials aimed at examining novel primary prevention strategies.

## Author Contributions

**Conceptualization:** Lena Mathews, Gary Gerstenblith, Robert G. Weiss, Allison G. Hays.

**Data curation:** Lena Mathews, Micaela Iantorno, Michael Schär, Gary Gerstenblith.

**Formal analysis:** Micaela Iantorno, Allison G. Hays.

**Funding acquisition:** Robert G. Weiss, Allison G. Hays.

**Investigation:** Lena Mathews, Micaela Iantorno, Michael Schär, Gabriele Bonanno, Gary Gerstenblith, Robert G. Weiss, Allison G. Hays.

**Methodology:** Lena Mathews, Micaela Iantorno, Michael Schär, Gabriele Bonanno, Gary Gerstenblith, Robert G. Weiss, Allison G. Hays.

**Project administration:** Lena Mathews, Allison G. Hays.

**Resources:** Robert G. Weiss, Allison G. Hays.

**Supervision:** Michael Schär, Robert G. Weiss, Allison G. Hays.

**Validation:** Michael Schär, Allison G. Hays.

**Visualization:** Gabriele Bonanno.

**Writing – original draft:** Lena Mathews, Allison G. Hays.

**Writing – review & editing:** Lena Mathews, Micaela Iantorno, Michael Schär, Gabriele Bonanno, Gary Gerstenblith, Robert G. Weiss, Allison G. Hays.

## References

1. Benjamin EJ, Blaha MJ, Chiuve SE, Cushman M, Das SR, Deo R, et al. Heart Disease and Stroke Statistics-2017 Update: A Report From the American Heart Association. *Circulation*. 2017; 135(10):e146–e603. <https://doi.org/10.1161/CIR.0000000000000485> PMID: 28122885.
2. Mosca L, Hammond G, Mochari-Greenberger H, Towfighi A, Albert MA, American Heart Association Cardiovascular D, et al. Fifteen-year trends in awareness of heart disease in women: results of a 2012 American Heart Association national survey. *Circulation*. 2013; 127(11):1254–63, e1–29. <https://doi.org/10.1161/CIR.0b013e318287cf2f> PMID: 23429926; PubMed Central PMCID: PMC3684065.
3. Lerner DJ, Kannel WB. Patterns of coronary heart disease morbidity and mortality in the sexes: a 26-year follow-up of the Framingham population. *Am Heart J*. 1986; 111(2):383–90. PMID: 3946178.
4. Tunstall-Pedoe H. Myth and paradox of coronary risk and the menopause. *Lancet*. 1998; 351(9113):1425–7. [https://doi.org/10.1016/S0140-6736\(97\)11321-6](https://doi.org/10.1016/S0140-6736(97)11321-6) PMID: 9593428.
5. Rosano GM, Vitale C, Marazzi G, Volterrani M. Menopause and cardiovascular disease: the evidence. *Climacteric: the journal of the International Menopause Society*. 2007; 10 Suppl 1:19–24. <https://doi.org/10.1080/13697130601114917> PMID: 17364594.
6. Muka T, Oliver-Williams C, Kunutsor S, Laven JS, Fauser BC, Chowdhury R, et al. Association of Age at Onset of Menopause and Time Since Onset of Menopause With Cardiovascular Outcomes, Intermediate Vascular Traits, and All-Cause Mortality: A Systematic Review and Meta-analysis. *JAMA cardiology*. 2016; 1(7):767–76. <https://doi.org/10.1001/jamacardio.2016.2415> PMID: 27627190.
7. Thurston RC, Johnson BD, Shufelt CL, Braunstein GD, Berga SL, Stanczyk FZ, et al. Menopausal symptoms and cardiovascular disease mortality in the Women's Ischemia Syndrome Evaluation (WISE). *Menopause*. 2017; 24(2):126–32. <https://doi.org/10.1097/GME.0000000000000731> PMID: 27676638; PubMed Central PMCID: PMC5266637.
8. Gutiérrez E, Flammer AJ, Lerman LO, Elízaga J, Lerman A, Fernández-Avilés F. Endothelial dysfunction over the course of coronary artery disease. *European Heart Journal*. 2013; 34(41):3175–81. <https://doi.org/10.1093/eurheartj/ehs351> PMID: 24014385
9. Reriani MK, Lerman LO, Lerman A. Endothelial function as a functional expression of cardiovascular risk factors. *Biomark Med*. 2010; 4(3):351–60. <https://doi.org/10.2217/bmm.10.61> PMID: 20550469; PubMed Central PMCID: PMC2911781.

10. Hadi HA, Carr CS, Al Suwaidi J. Endothelial dysfunction: cardiovascular risk factors, therapy, and outcome. *Vasc Health Risk Manag*. 2005; 1(3):183–98. PMID: [17319104](#); PubMed Central PMCID: PMCPMC1993955.
11. Reriani M, Sara JD, Flammer AJ, Gulati R, Li J, Rihal C, et al. Coronary endothelial function testing provides superior discrimination compared with standard clinical risk scoring in prediction of cardiovascular events. *Coron Artery Dis*. 2016; 27(3):213–20. <https://doi.org/10.1097/MCA.0000000000000347> PMID: [26882018](#); PubMed Central PMCID: PMCPMC4823151.
12. Celermajer DS, Sorensen KE, Spiegelhalter DJ, Georgakopoulos D, Robinson J, Deanfield JE. Aging is associated with endothelial dysfunction in healthy men years before the age-related decline in women. *Journal of the American College of Cardiology*. 1994; 24(2):471–6. Epub 1994/08/01. PMID: [8034885](#).
13. Skaug EA, Aspenes ST, Oldervoll L, Morkedal B, Vatten L, Wisloff U, et al. Age and gender differences of endothelial function in 4739 healthy adults: the HUNT3 Fitness Study. *Eur J Prev Cardiol*. 2013; 20(4):531–40. <https://doi.org/10.1177/2047487312444234> PMID: [22456692](#).
14. Yavuz BB, Yavuz B, Sener DD, Cankurtaran M, Halil M, Ulger Z, et al. Advanced age is associated with endothelial dysfunction in healthy elderly subjects. *Gerontology*. 2008; 54(3):153–6. <https://doi.org/10.1159/000129064> PMID: [18441522](#).
15. Gerhard M, Roddy MA, Creager SJ, Creager MA. Aging progressively impairs endothelium-dependent vasodilation in forearm resistance vessels of humans. *Hypertension*. 1996; 27(4):849–53. PMID: [8613259](#).
16. Herrington DM, Fan L, Drum M, Riley WA, Pusser BE, Crouse JR, et al. Brachial flow-mediated vasodilator responses in population-based research: methods, reproducibility and effects of age, gender and baseline diameter. *J Cardiovasc Risk*. 2001; 8(5):319–28. PMID: [11702039](#).
17. Jensen-Urstad K, Johansson J. Gender difference in age-related changes in vascular function. *J Intern Med*. 2001; 250(1):29–36. PMID: [11454139](#).
18. Libby P. Inflammation in atherosclerosis. *Nature*. 2002; 420(6917):868–74. <https://doi.org/10.1038/nature01323> PMID: [12490960](#).
19. Ross R. The pathogenesis of atherosclerosis: a perspective for the 1990s. *Nature*. 1993; 362(6423):801–9. <https://doi.org/10.1038/362801a0> PMID: [8479518](#).
20. Nitenberg A, Chemla D, Antony I. Epicardial coronary artery constriction to cold pressor test is predictive of cardiovascular events in hypertensive patients with angiographically normal coronary arteries and without other major coronary risk factor. *Atherosclerosis*. 2004; 173(1):115–23. <https://doi.org/10.1016/j.atherosclerosis.2003.12.030> PMID: [15177131](#).
21. Schachinger V, Britten MB, Zeiher AM. Prognostic impact of coronary vasodilator dysfunction on adverse long-term outcome of coronary heart disease. *Circulation*. 2000; 101(16):1899–906. PMID: [10779454](#).
22. Suwaidi JA, Hamasaki S, Higano ST, Nishimura RA, Holmes DR Jr., Lerman A. Long-term follow-up of patients with mild coronary artery disease and endothelial dysfunction. *Circulation*. 2000; 101(9):948–54. PMID: [10704159](#).
23. von Mering GO, Arant CB, Wessel TR, McGorray SP, Bairey Merz CN, Sharaf BL, et al. Abnormal coronary vasomotion as a prognostic indicator of cardiovascular events in women: results from the National Heart, Lung, and Blood Institute-Sponsored Women's Ischemia Syndrome Evaluation (WISE). *Circulation*. 2004; 109(6):722–5. <https://doi.org/10.1161/01.CIR.0000115525.92645.16> PMID: [14970106](#).
24. Ludmer PL, Selwyn AP, Shook TL, Wayne RR, Mudge GH, Alexander RW, et al. Paradoxical vasoconstriction induced by acetylcholine in atherosclerotic coronary arteries. *The New England journal of medicine*. 1986; 315(17):1046–51. Epub 1986/10/23. <https://doi.org/10.1056/NEJM198610233151702> PMID: [3093861](#).
25. Iantorno M, Hays AG, Schar M, Krishnaswamy R, Soleimanifard S, Steinberg A, et al. Simultaneous Noninvasive Assessment of Systemic and Coronary Endothelial Function. *Circulation Cardiovascular imaging*. 2016; 9(3):e003954. Epub 2016/02/28. <https://doi.org/10.1161/CIRCIMAGING.115.003954> PMID: [26919997](#); PubMed Central PMCID: PMCPMC4839535.
26. Anderson TJ, Uehata A, Gerhard MD, Meredith IT, Knab S, Delagrang D, et al. Close relation of endothelial function in the human coronary and peripheral circulations. *Journal of the American College of Cardiology*. 1995; 26(5):1235–41. PMID: [7594037](#).
27. Hays AG, Hirsch GA, Kelle S, Gerstenblith G, Weiss RG, Stuber M. Noninvasive visualization of coronary artery endothelial function in healthy subjects and in patients with coronary artery disease. *Journal of the American College of Cardiology*. 2010; 56(20):1657–65. Epub 2010/11/06. <https://doi.org/10.1016/j.jacc.2010.06.036> PMID: [21050976](#).
28. Hays AG, Kelle S, Hirsch GA, Soleimanifard S, Yu J, Agarwal HK, et al. Regional coronary endothelial function is closely related to local early coronary atherosclerosis in patients with mild coronary artery

- disease: pilot study. *Circulation Cardiovascular imaging*. 2012; 5(3):341–8. <https://doi.org/10.1161/CIRCIMAGING.111.969691> PMID: 22492483; PubMed Central PMCID: PMCPMC3665274.
29. Hays AG, Stuber M, Hirsch GA, Yu J, Schar M, Weiss RG, et al. Non-invasive detection of coronary endothelial response to sequential handgrip exercise in coronary artery disease patients and healthy adults. *PLoS One*. 2013; 8(3):e58047. <https://doi.org/10.1371/journal.pone.0058047> PMID: 23536782; PubMed Central PMCID: PMCPMC3594224.
  30. Hays AG, Iantorno M, Soleimanifard S, Steinberg A, Schar M, Gerstenblith G, et al. Coronary vasomotor responses to isometric handgrip exercise are primarily mediated by nitric oxide: a noninvasive MRI test of coronary endothelial function. *Am J Physiol Heart Circ Physiol*. 2015; 308(11):H1343–50. <https://doi.org/10.1152/ajpheart.00023.2015> PMID: 25820391; PubMed Central PMCID: PMCPMC4451304.
  31. Lee BK, Lim HS, Fearon WF, Yong AS, Yamada R, Tanaka S, et al. Invasive evaluation of patients with angina in the absence of obstructive coronary artery disease. *Circulation*. 2015; 131(12):1054–60. <https://doi.org/10.1161/CIRCULATIONAHA.114.012636> PMID: 25712205; PubMed Central PMCID: PMCPMC5295466.
  32. Stone NJ, Robinson JG, Lichtenstein AH, Bairey Merz CN, Blum CB, Eckel RH, et al. 2013 ACC/AHA guideline on the treatment of blood cholesterol to reduce atherosclerotic cardiovascular risk in adults: a report of the American College of Cardiology/American Heart Association Task Force on Practice Guidelines. *Journal of the American College of Cardiology*. 2014; 63(25 Pt B):2889–934. <https://doi.org/10.1016/j.jacc.2013.11.002> PMID: 24239923.
  33. Agatston AS, Janowitz WR, Hildner FJ, Zusmer NR, Viamonte M Jr., Detrano R. Quantification of coronary artery calcium using ultrafast computed tomography. *Journal of the American College of Cardiology*. 1990; 15(4):827–32. Epub 1990/03/15. PMID: 2407762.
  34. Harlow SD, Gass M, Hall JE, Lobo R, Maki P, Rebar RW, et al. Executive summary of the Stages of Reproductive Aging Workshop + 10: addressing the unfinished agenda of staging reproductive aging. *J Clin Endocrinol Metab*. 2012; 97(4):1159–68. <https://doi.org/10.1210/jc.2011-3362> PMID: 22344196; PubMed Central PMCID: PMCPMC3319184.
  35. Stuber M, Botnar RM, Daniias PG, Sodickson DK, Kissinger KV, Van Cauteren M, et al. Double-oblique free-breathing high resolution three-dimensional coronary magnetic resonance angiography. *Journal of the American College of Cardiology*. 1999; 34(2):524–31. Epub 1999/08/10. PMID: 10440168.
  36. Terashima M, Meyer CH, Keeffe BG, Putz EJ, de la Pena-Almaguer E, Yang PC, et al. Noninvasive assessment of coronary vasodilation using magnetic resonance angiography. *Journal of the American College of Cardiology*. 2005; 45(1):104–10. Epub 2005/01/05. <https://doi.org/10.1016/j.jacc.2004.09.057> PMID: 15629383.
  37. Keegan J, Gatehouse PD, Yang GZ, Firmin DN. Spiral phase velocity mapping of left and right coronary artery blood flow: correction for through-plane motion using selective fat-only excitation. *Journal of magnetic resonance imaging: JMRI*. 2004; 20(6):953–60. Epub 2004/11/24. <https://doi.org/10.1002/jmri.20208> PMID: 15558551.
  38. Weiss RG, Bottomley PA, Hardy CJ, Gerstenblith G. Regional myocardial metabolism of high-energy phosphates during isometric exercise in patients with coronary artery disease. *The New England journal of medicine*. 1990; 323(23):1593–600. Epub 1990/12/06. <https://doi.org/10.1056/NEJM199012063232304> PMID: 2233948.
  39. Brown BG, Josephson MA, Petersen RB, Pierce CD, Wong M, Hecht HS, et al. Intravenous dipyridamole combined with isometric handgrip for near maximal acute increase in coronary flow in patients with coronary artery disease. *The American journal of cardiology*. 1981; 48(6):1077–85. PMID: 6795913.
  40. Doucette JW, Corl PD, Payne HM, Flynn AE, Goto M, Nassi M, et al. Validation of a Doppler guide wire for intravascular measurement of coronary artery flow velocity. *Circulation*. 1992; 85(5):1899–911. PMID: 1572046
  41. Anderson TJ, Uehata A, Gerhard MD, Meredith IT, Knab S, Delagrangue D, et al. Close relation of endothelial function in the human coronary and peripheral circulations. *Journal of the American College of Cardiology*. 1995; 26(5):1235–41. PMID: 7594037.
  42. Yahagi K, Davis HR, Arbustini E, Virmani R. Sex differences in coronary artery disease: pathological observations. *Atherosclerosis*. 2015; 239(1):260–7. <https://doi.org/10.1016/j.atherosclerosis.2015.01.017> PMID: 25634157.
  43. Bairey Merz CN, Shaw LJ, Reis SE, Bittner V, Kelsey SF, Olson M, et al. Insights from the NHLBI-Sponsored Women's Ischemia Syndrome Evaluation (WISE) Study: Part II: gender differences in presentation, diagnosis, and outcome with regard to gender-based pathophysiology of atherosclerosis and macrovascular and microvascular coronary disease. *Journal of the American College of Cardiology*. 2006; 47(3 Suppl):S21–9. <https://doi.org/10.1016/j.jacc.2004.12.084> PMID: 16458167.
  44. Gulati M, Cooper-DeHoff RM, McClure C, Johnson BD, Shaw LJ, Handberg EM, et al. Adverse cardiovascular outcomes in women with nonobstructive coronary artery disease: a report from the Women's

- Ischemia Syndrome Evaluation Study and the St James Women Take Heart Project. *Arch Intern Med.* 2009; 169(9):843–50. <https://doi.org/10.1001/archinternmed.2009.50> PMID: 19433695; PubMed Central PMCID: PMCPMC2782882.
45. Sharaf B, Wood T, Shaw L, Johnson BD, Kelsey S, Anderson RD, et al. Adverse outcomes among women presenting with signs and symptoms of ischemia and no obstructive coronary artery disease: findings from the National Heart, Lung, and Blood Institute-sponsored Women's Ischemia Syndrome Evaluation (WISE) angiographic core laboratory. *Am Heart J.* 2013; 166(1):134–41. <https://doi.org/10.1016/j.ahj.2013.04.002> PMID: 23816032; PubMed Central PMCID: PMCPMC3703586.
  46. Han SH, Bae JH, Holmes DR Jr., Lennon RJ, Eeckhout E, Barsness GW, et al. Sex differences in atheroma burden and endothelial function in patients with early coronary atherosclerosis. *Eur Heart J.* 2008; 29(11):1359–69. <https://doi.org/10.1093/eurheartj/ehn142> PMID: 18424787.
  47. Muka T, Vargas KG, Jaspers L, Wen KX, Dhana K, Vitezova A, et al. Estrogen receptor beta actions in the female cardiovascular system: A systematic review of animal and human studies. *Maturitas.* 2016; 86:28–43. <https://doi.org/10.1016/j.maturitas.2016.01.009> PMID: 26921926.
  48. Shuster LT, Rhodes DJ, Gostout BS, Grossardt BR, Rocca WA. Premature menopause or early menopause: long-term health consequences. *Maturitas.* 2010; 65(2):161–6. <https://doi.org/10.1016/j.maturitas.2009.08.003> PMID: 19733988; PubMed Central PMCID: PMCPMC2815011.
  49. Baber RJ, Panay N, Fenton A, Group IMSW. 2016 IMS Recommendations on women's midlife health and menopause hormone therapy. *Climacteric: the journal of the International Menopause Society.* 2016; 19(2):109–50. <https://doi.org/10.3109/13697137.2015.1129166> PMID: 26872610.
  50. Faubion SS, Kuhle CL, Shuster LT, Rocca WA. Long-term health consequences of premature or early menopause and considerations for management. *Climacteric: the journal of the International Menopause Society.* 2015; 18(4):483–91. <https://doi.org/10.3109/13697137.2015.1020484> PMID: 25845383; PubMed Central PMCID: PMCPMC4581591.
  51. Oertelt-Prigione S, Seeland U, Kendel F, Rucke M, Floel A, Gaissmaier W, et al. Cardiovascular risk factor distribution and subjective risk estimation in urban women—the BEFRI study: a randomized cross-sectional study. *BMC Med.* 2015; 13:52. <https://doi.org/10.1186/s12916-015-0304-9> PMID: 25857677; PubMed Central PMCID: PMCPMC4373038.
  52. Jorstad HT, Colkesen EB, Boekholdt SM, Tijssen JG, Wareham NJ, Khaw KT, et al. Estimated 10-year cardiovascular mortality seriously underestimates overall cardiovascular risk. *Heart.* 2016; 102(1):63–8. <https://doi.org/10.1136/heartjnl-2015-307668> PMID: 26261158; PubMed Central PMCID: PMCPMC4717404.
  53. El Khoudary SR, Santoro N, Chen HY, Tepper PG, Brooks MM, Thurston RC, et al. Trajectories of estradiol and follicle-stimulating hormone over the menopause transition and early markers of atherosclerosis after menopause. *Eur J Prev Cardiol.* 2016; 23(7):694–703. <https://doi.org/10.1177/2047487315607044> PMID: 26385249; PubMed Central PMCID: PMCPMC4816655.
  54. Taddei S, Virdis A, Ghiadoni L, Mattei P, Sudano I, Bernini G, et al. Menopause is associated with endothelial dysfunction in women. *Hypertension.* 1996; 28(4):576–82. PMID: 8843881.
  55. Stampfer MJ, Colditz GA. Estrogen replacement therapy and coronary heart disease: a quantitative assessment of the epidemiologic evidence. *Prev Med.* 1991; 20(1):47–63. PMID: 1826173.
  56. Matthews KA, Kuller LH, Sutton-Tyrrell K, Chang YF. Changes in cardiovascular risk factors during the perimenopause and postmenopause and carotid artery atherosclerosis in healthy women. *Stroke.* 2001; 32(5):1104–11. Epub 2001/09/06. PMID: 11340217.
  57. Luk TH, Dai YL, Siu CW, Yiu KH, Chan HT, Lee SW, et al. Effect of exercise training on vascular endothelial function in patients with stable coronary artery disease: a randomized controlled trial. *Eur J Prev Cardiol.* 2012; 19(4):830–9. <https://doi.org/10.1177/1741826711415679> PMID: 21724681.
  58. McCrohon JA, Adams MR, McCredie RJ, Robinson J, Pike A, Abbey M, et al. Hormone replacement therapy is associated with improved arterial physiology in healthy post-menopausal women. *Clin Endocrinol (Oxf).* 1996; 45(4):435–41. PMID: 8959082.
  59. Liu L, Liu J, Huang Y. Protective Effects of Glucagon-like Peptide 1 on Endothelial Function in Hypertension. *J Cardiovasc Pharmacol.* 2015; 65(5):399–405. <https://doi.org/10.1097/FJC.000000000000176> PMID: 25384196.
  60. Takase S, Matoba T, Nakashiro S, Mukai Y, Inoue S, Oi K, et al. Ezetimibe in Combination With Statins Ameliorates Endothelial Dysfunction in Coronary Arteries After Stenting: The CuVIC Trial (Effect of Cholesterol Absorption Inhibitor Usage on Target Vessel Dysfunction After Coronary Stenting), a Multi-center Randomized Controlled Trial. *Arterioscler Thromb Vasc Biol.* 2017; 37(2):350–8. <https://doi.org/10.1161/ATVBAHA.116.308388> PMID: 27932353.
  61. O'Driscoll G, Green D, Taylor RR. Simvastatin, an HMG-coenzyme A reductase inhibitor, improves endothelial function within 1 month. *Circulation.* 1997; 95(5):1126–31. PMID: 9054840.