

Caffeine as symptomatic treatment for Parkinson disease (Café-PD)

A randomized trial



Ronald B. Postuma, MD,
MSc

Julius Anang, MD

Amelie Pelletier, MD

Lawrence Joseph, PhD

Mariana Moscovich, MD

David Grimes, MD

Sarah Furtado, MD

Renato P. Munhoz, MD

Silke Appel-Cresswell,
MD

Adriana Moro, MD

Andrew Borys, MD

Douglas Hobson, MD

Anthony E. Lang, MD

Correspondence to
Dr. Postuma:
ron.postuma@mcgill.ca

ABSTRACT

Objective: To assess effects of caffeine on Parkinson disease (PD).

Methods: In this multicenter parallel-group controlled trial, patients with PD with 1–8 years disease duration, Hoehn & Yahr stages I–III, on stable symptomatic therapy were randomized to caffeine 200 mg BID vs matching placebo capsules for 6–18 months. The primary research question was whether objective motor scores would differ at 6 months (Movement Disorder Society-sponsored Unified Parkinson's Disease Rating Scale [MDS-UPDRS]-III, Class I evidence). Secondary outcomes included safety and tolerability, motor symptoms (MDS-UPDRS-II), motor fluctuations, sleep, nonmotor symptoms (MDS-UPDRS-I), cognition (Montreal Cognitive Assessment), and quality of life.

Results: Sixty patients received caffeine and 61 placebo. Caffeine was well-tolerated with similar prevalence of side effects as placebo. There was no improvement in motor parkinsonism (the primary outcome) with caffeine treatment compared to placebo (difference between groups -0.48 [95% confidence interval -3.21 to 2.25] points on MDS-UPDRS-III). Similarly, on secondary outcomes, there was no change in motor signs or motor symptoms (MDS-UPDRS-II) at any time point, and no difference on quality of life. There was a slight improvement in somnolence over the first 6 months, which attenuated over time. There was a slight increase in dyskinesia with caffeine (MDS-UPDRS-4.1+4.2 = 0.25 points higher), and caffeine was associated with worse cognitive testing scores (average Montreal Cognitive Assessment = 0.66 [0.01, 1.32] worse than placebo).

Conclusion: Caffeine did not provide clinically important improvement of motor manifestations of PD (Class I evidence). Epidemiologic links between caffeine and lower PD risk do not appear to be explained by symptomatic effects.

Clinicaltrials.gov identifier: NCT01738178.

Classification of evidence: This study provides Class I evidence that for patients with PD, caffeine does not significantly improve motor manifestations. *Neurology*® 2017;89:1795–1803

GLOSSARY

BDI = Beck Depression Inventory; **CI** = confidence interval; **EQ-5D** = EuroQoL 5-dimension; **KVIQ** = Kinesthetic and Visual Imagery Questionnaire; **MDS-UPDRS** = Movement Disorder Society-sponsored Unified Parkinson's Disease Rating Scale; **MoCA** = Montreal Cognitive Assessment; **PD** = Parkinson disease; **SCOPA** = Scales for Outcomes in PD.

Multiple studies have consistently linked the use of caffeine, an adenosine antagonist, to a lower risk of Parkinson disease (PD). The combined relative risk in a recent meta-analysis was 0.67 (95% confidence interval [CI] 0.58, 0.76).¹ The mechanism for this robust finding is unclear. Although a neuroprotective effect is possible,^{2,3} there are other explanations, including reverse causality (prodromal PD reduces tolerability, benefit, or desire for caffeine), symptomatic benefit (caffeine treats motor symptoms, so delays diagnosis), or residual confounding by another factor (e.g., the Parkinson personality or changes in reward mechanisms).

Recently, we conducted a small randomized trial of caffeine in patients with PD with daytime somnolence.^{4,5} We observed a modest benefit on somnolence, but also found benefit on motor

Supplemental data
at *Neurology.org*

From the Department of Neurology, Montreal General Hospital (R.B.P., A.P.), and Department of Epidemiology and Biostatistics (L.J.), McGill University, Montreal; Department of Neurology (J.A., A.B., D.H.), University of Manitoba, Winnipeg, Canada; Pontifical Catholic University of Parana (M.M., A.M.), Curitiba, Brazil; Department of Neurology (D.G.), Ottawa Hospital, University of Ottawa Brain and Mind Research Institute; Department of Neurology (S.F.), University of Calgary; Division of Neurology (R.P.M., A.E.L.), Toronto Western Hospital; and Department of Medicine, Division of Neurology, Djavad Mowafaghian Centre for Brain Health, and Pacific Parkinson's Research Centre (S.A.-C.), University of British Columbia, Vancouver, Canada.

Go to *Neurology.org* for full disclosures. Funding information and disclosures deemed relevant by the authors, if any, are provided at the end of the article.

manifestations, with a 3.2-point improvement on the Unified Parkinson's Disease Rating Scale part III. If caffeine could be used as a symptomatic agent for PD, it would have the notable advantage of being safe, well-tolerated, and inexpensive. However, the motor finding in our study was a secondary outcome. Also, the study was short duration (6 weeks), and given caffeine's well-known tachyphylactic properties for sleepiness,^{6,7} motor effects may be short-lived.

Therefore, we conducted a multicenter parallel-group randomized controlled trial to evaluate the symptomatic effects of caffeine in PD.

METHODS **Standard protocol approvals, registrations, and patient consents.** All patients provided written consent to participate, and research ethics boards of each center approved the study. The study is registered on clinicaltrials.gov (NCT01738178).

Patients. Patients were recruited from 7 sites at the McGill University Health Center; University of Manitoba; Toronto Western Hospital; Ottawa Civic Hospital; Pontifical Catholic University of Parana, Curitiba, Brazil; University of British Columbia; and University of Calgary between June 2014 and December 2015. All patients had idiopathic PD diagnosed as (1) parkinsonism according to UK brain bank criteria⁸ and (2) PD considered the likeliest cause according to the treating physician.⁹ Inclusion criteria were disease duration 6 months to 8 years, age 45–75 years, Hoehn & Yahr stage I–III, receiving symptomatic PD therapy for >6 months, and on stable dose for >3 months. Exclusion criteria included caffeine intake >150 mg per day (on standardized intake questionnaire), another adenosine antagonist, active peptic ulcers, supraventricular cardiac arrhythmia, uncontrolled hypertension, premenopausal women not using effective birth control, cognitive impairment (Montreal Cognitive Assessment [MoCA] <23/30),¹⁰ moderate to severe depression (Beck Depression Inventory [BDI] >19),¹¹ anticipated need to change medications

over the next 6 months, and current use of lithium or clozapine (pharmacokinetic interactions).

Intervention. The treatment was caffeine-containing capsules 200 mg twice daily (or matching placebo in 1:1 ratio) in the morning and after lunch (this corresponding to approximately 3 daily cups of coffee, depending upon brewing technique). To improve tolerability and minimize unblinding, the dose was increased slowly (50 mg per week), with placebo for the first week, and full dose was reached at week 9.

Randomization and blinding. Randomization was by block randomization (block size = 4), stratified to site, by a central statistician (L.J.) using PROC-PLAN (SAS Institute, Cary, NC). All patients, study investigators, and examiners were blinded to treatment assignment. Caffeine and placebo tablets were encapsulated as indistinguishable in appearance, prepared by a central pharmacy. To assess potential unblinding, patients and physician examiners were asked at study conclusion to guess each treatment allocation (forced choice of caffeine vs placebo).

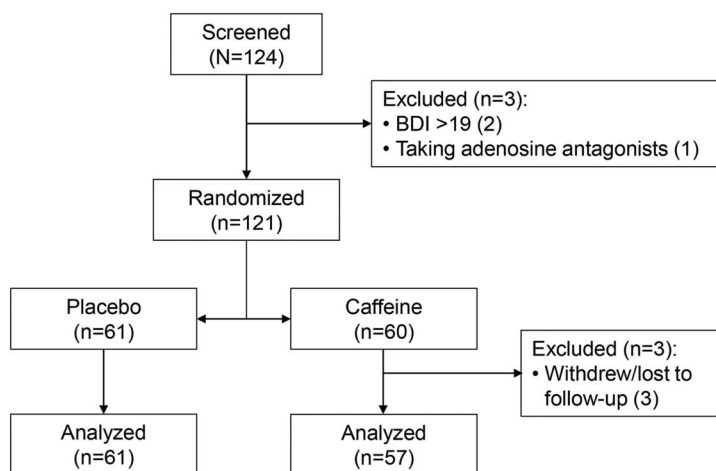
Monitoring. Compliance was assessed by patient report and pill counts. Dietary caffeine intake was assessed by standardized questionnaire¹²; all patients were instructed to avoid changing caffeine intake during the trial. For safety reasons, any patient who increased spontaneous caffeine intake to >300 mg would be withdrawn from the study. Adverse events were queried by semi-structured interview, screening for symptoms of gastrointestinal pain, other gastrointestinal problems, sleep changes, palpitations, sweating, and tremulousness, as well as open-ended adverse event reporting. Blood pressure was assessed to rule out new-onset hypertension.

Outcomes. The primary outcome was change in objective motor parkinsonism severity over 6 months, rated by the Movement Disorder Society–sponsored Unified Parkinson's Disease Rating Scale (MDS-UPDRS) part III,¹³ assessed in the antiparkinson medication “on” state.

Secondary outcomes included all other components of the MDS-UPDRS (i.e., nonmotor symptoms, motor symptoms, fluctuations/dyskinesia). We also examined individual scores of each motor and nonmotor item from the MDS-UPDRS. Cognition was assessed with the MoCA,¹⁰ performed annually after 6 months using alternating versions 1–3 to prevent practice effects. Insomnia and somnolence were assessed with the Scales for Outcomes in PD (SCOPA) sleep scale (nighttime and daytime components),¹⁴ and REM sleep behavior disorder was screened with the REM Sleep Behavior Disorder Single-Question Screen.¹⁵ Both patient and examiner recorded a clinical global impression of change for overall PD severity. Quality of life was measured with the 5-item EuroQoL 5-dimension (EQ-5D).¹⁶ We also assessed antiparkinson medication doses, calculated as levodopa-dose equivalents.¹⁷

Study visits and study termination. The study was divided into 3 stages. The first stage (the primary outcome measure of this publication) was designed to estimate motor benefits of caffeine while keeping symptomatic medications constant. Three visits were conducted, at baseline, 3 months, and 6 months of therapy. After 6 months, a second extension stage was started, in which patients continued caffeine/placebo with medication adjustments allowed as needed and followed every 6 months. Stage 1 was powered (80% power, $\alpha = 0.05$) to find a change in MDS-UPDRS-III of 3 points; assuming SD for this change of 4.5 points, this required 38 patients per group. The study was also additionally powered for extension stages, for a planned total of 250 patients. Stage 2 was designed as a 4-year extension to assess whether symptomatic effects could be maintained, and how these effects

Figure 1 Patient flow throughout the course of the study



BDI = Beck Depression Inventory.

might manifest on examination findings and medication utilization. Stage 3 was intended as a long-latency delayed start stage with all participants receiving caffeine, to be used as a pilot study for potential disease modification. However, following uncertain results of A2A antagonist programs (e.g., preladenant abandoned for failure at phase 3 trials^{18,19}), and slower than expected recruitment, we elected to perform an interim analysis of data. At this stage, 121 patients had been recruited, ensuring sufficient accuracy to assess the primary stage 1 outcome. Based on results of this analysis, the study was stopped (because there was no evident symptomatic effect to be followed up in stage 2, and stage 3 was only an inadequately powered pilot stage). All patients were requested to complete stage 1, and patients in later stages were brought in for a final visit, after which intervention was terminated. As a secondary outcome, we analyzed results for all patients in the second stage, up until 18 months trial duration.

Analysis. The primary analysis was intention-to-treat. Multiple imputation was planned for missing data; however, since only

<1% of variables were missing, we omitted missing values. Adverse events and tolerability were reported descriptively, and the overall frequency of adverse events, serious adverse events, and dropout rates were compared by calculating 95% CIs for the between-group differences in proportions. We estimated treatment effects at each time point separately by creating baseline-to-time point differences within each patient, and comparing means across treatment groups with 95% CIs. For the analyses of other time points, we used 2 analyses; one was the same analysis as for the primary outcome, and the second considered all time points together. For the second, we adjusted for time by estimating a coefficient for each time point independently, that is, not assuming any shape or fixed slope for the outcome over time. A group measure then estimated the treatment effect, which assumed a constant difference between groups over time, after adjusting for baseline shape at each time point. We estimated treatment effects across these multiple time points using a Bayesian hierarchical random effects model, adjusting for time as described above, including age and sex as covariates.

Table 1 Baseline characteristics

| | Caffeine (n = 60) | Placebo (n = 61) |
|--|-------------------|------------------|
| Age, y | 62.4 ± 7.5 | 62.3 ± 8.4 |
| Sex, % male | 68.3 | 60.7 |
| Duration of PD, y | 4.12 ± 2.04 | 3.68 ± 2.00 |
| Education, y | 14.9 ± 4.3 | 15.6 ± 4.2 |
| Smoking status | | |
| Nonsmoker | 61.7 | 59.0 |
| Former smoker | 35.0 | 32.8 |
| Smoker | 3.3 | 8.2 |
| RBD1Q, % yes | 40.0 | 36.1 |
| Caffeine consumption, mg/d | 72.8 ± 54.50 | 92.17 ± 50.30 |
| Levodopa dose equivalents, mg | 577.7 ± 309.2 | 503.4 ± 252.6 |
| Systolic blood pressure, lying down, mm Hg | 127.52 ± 13.5 | 127.2 ± 16.3 |
| Systolic blood pressure, standing, mm Hg | 123.0 ± 17.0 | 122.1 ± 17.0 |
| MDS-UPDRS part III | 20.7 ± 10.6 | 19.7 ± 9.4 |
| MDS-UPDRS part I | 6.77 ± 4.47 | 7.28 ± 3.81 |
| 1.7 Nighttime sleep | 0.98 ± 1.07 | 1.20 ± 1.09 |
| 1.8 Daytime somnolence | 0.98 ± 0.83 | 0.87 ± 0.76 |
| MDS-UPDRS part II | 7.33 ± 4.21 | 7.07 ± 4.64 |
| MDS-UPDRS part IV | 1.30 ± 2.11 | 1.48 ± 2.42 |
| Dyskinesia, total | 0.23 ± 0.74 | 0.39 ± 0.90 |
| Fluctuations, total | 0.93 ± 1.49 | 0.92 ± 1.61 |
| SCOPA-sleep nighttime | 3.08 ± 3.00 | 4.15 ± 2.83 |
| SCOPA-sleep daytime | 2.95 ± 2.22 | 3.13 ± 2.49 |
| Montreal Cognitive Assessment | 27.7 ± 1.76 | 26.9 ± 2.04 |
| Beck Depression Inventory | 7.07 ± 5.96 | 7.95 ± 4.83 |
| EQ-5D-5L | 7.15 ± 2.03 | 7.43 ± 2.12 |

Abbreviations: EQ-5D = EuroQoL 5-dimension; MDS-UPDRS = Movement Disorder Society-sponsored Unified Parkinson's Disease Rating Scale; PD = Parkinson disease; RBD1Q = REM Sleep Behavior Disorder Single-Question Screen; SCOPA = Scales for Outcomes in PD.

Shown are baseline values of patients enrolled in the trial. Except for % variables, values are presented as mean ± SD.

RESULTS Patient flow is illustrated in figure 1. A total of 121 patients were randomized: 60 to caffeine and 61 to placebo. Three patients withdrew and were lost to follow-up, all in the caffeine group. Therefore, 57 caffeine and 61 placebo patients were available for the primary analysis. Baseline variables are shown in table 1.

Tolerability, adverse events, and blinding. Over 6 months, 29 patients receiving caffeine and 31 patients receiving placebo reported adverse events (difference 2.5% [95% CI −15, 20]). No adverse event was significantly more common with caffeine (table e-1 at [Neurology.org](#)). One patient in each group had a serious adverse event, both deemed to be unrelated to study intervention. Of patients in the analysis, 7 receiving caffeine and 5 receiving placebo stopped the intervention because of side effects. There was no difference in blood pressure or caffeine consumption changes between groups. At the 6-month visit, 50% of patients guessed their treatment correctly (95% CI 41, 59), and examiners guessed correctly 57% (48%, 65%) of the time (chance 50%), indicating successful blinding.

Effect of caffeine at 6 months. Over 6 months, the MDS-UPDRS III worsened by a mean of 0.64 (SD 7.25) points in the placebo group, compared to 0.16 (SD 7.68) points in the caffeine group (table 2, figure 2). There was no difference in decline between groups (0.48 points [−3.21, 2.25]). Removing protocol violations (including study medication termination) did not affect results (decline = 0.11 points less in placebo). Stratifying to baseline caffeine use also did not affect results (e.g., MDS-UPDRS III change in caffeine group = 0.10 ± 7.8 for those with baseline caffeine intake <80 mg/d vs 0.23 ± 7.0 for ≥80 mg/d). Caffeine response did not differ according to center ($p = 0.64$ for interaction between center and group on generalized linear modeling). Similarly, there was no difference in motor symptoms on the

Table 2 Effect of caffeine at 6 months (primary outcome)

| | Caffeine (n = 57) | Placebo (n = 60) | Difference (95% CI) |
|--|-------------------|------------------|---|
| Caffeine consumption, mg/d | -2.93 ± 38.3 | -3.28 ± 36.3 | 0.36 ± 6.87 (-13.26, 3.97) |
| Levodopa equivalents, mg/d | 24.3 ± 91.4 | 14.8 ± 58.1 | 9.5 ± 13.4 (-18.2, 37.2) |
| Systolic blood pressure drop, mm Hg | 0.30 ± 12.06 | 0.47 ± 15.76 | -0.17 ± 2.59 (-5.29, 4.96) |
| MDS-UPDRS part III | 0.16 ± 7.68 | 0.57 ± 7.25 | -0.42 ± 1.38 (-3.14, 2.31) |
| MDS-UPDRS part I | -0.07 ± 3.28 | -0.72 ± 3.04 | 0.65 ± 0.58 (-0.50, 1.81) |
| 1.7 Nighttime sleep | 0.05 ± 0.97 | -0.21 ± 0.88 | 0.27 ± 0.17 (-0.07, 0.60) |
| 1.8 Daytime somnolence | -0.26 ± 0.81 | 0.21 ± 0.82 | -0.48 ± 0.15 (-0.77, -0.18 ^a) |
| MDS-UPDRS part II | -0.18 ± 2.78 | 0.20 ± 3.09 | -0.38 ± 0.54 (-1.45, 0.69) |
| MDS-UPDRS part IV, dyskinesia, total | 0.30 ± 0.91 | 0.18 ± 0.65 | 0.12 ± 0.15 (-0.17, 0.41) |
| MDS-UPDRS part IV, fluctuations, total | 0.32 ± 1.56 | 0.10 ± 1.42 | 0.22 ± 0.28 (-0.33, 0.76) |
| SCOPA-sleep nighttime | 0.12 ± 2.32 | -0.67 ± 2.72 | 0.79 ± 0.46 (-0.12, 1.71) |
| SCOPA-sleep daytime | -0.37 ± 1.70 | 0.00 ± 1.87 | -0.37 ± 0.33 (-1.02, 0.28) |
| Montreal Cognitive Assessment | 0.02 ± 1.55 | 0.65 ± 1.89 | -0.63 ± 0.32 (-1.27, 0.01 ^a) |
| Beck Depression Inventory | -1.36 ± 6.44 | -1.05 ± 3.95 | -0.31 ± 1.02 (-2.34, 1.73) |
| EQ-5D-5L | 0.22 ± 2.10 | -0.26 ± 2.30 | -0.04 ± 0.41 (-0.85, 0.76) |
| Clinical global impression—examiner | 2.95 ± 0.67 | 3.07 ± 0.63 | -0.12 ± 0.12 (-0.36, 0.12) |
| Clinical global impression—patient | 2.89 ± 0.85 | 2.87 ± 0.89 | 0.03 ± 0.16 (-0.29, 0.35) |

Abbreviations: CI = confidence interval; EQ-5D = EuroQoL 5-dimension; MDS-UPDRS = Movement Disorder Society-sponsored Unified Parkinson's Disease Rating Scale; SCOPA = Scales for Outcomes in PD.

Results are expressed as the *change* in each parameter from baseline to 6 months. Except for % variables, values are presented as mean ± SD.

^a95% CI that do not cross zero.

MDS-UPDRS part II total, or any of its individual components. The clinical global impression of change (rating overall PD severity) did not differ, either when assessed by patient or by examiner. There was no difference in depression or anxiety on the BDI or UPDRS part I, and no difference in quality of life on the EQ-5D.

Among the secondary outcomes, we noticed a small difference in the daytime somnolence score of the MDS-UPDRS in favor of caffeine (-0.49 [-0.79, -0.20] points). This was accompanied by an equivocal improvement in SCOPA-sleep daytime component (-0.37 [-1.02, 0.28] points), with 95% CI crossing zero. Nighttime sleep was slightly worse with caffeine, but 95% CIs crossed zero (0.28 [-0.06, 0.62] points on MDS-UPDRS and 0.81 [-0.11, 1.73] points on SCOPA-sleep nighttime). There was also a small difference in MoCA scores favoring placebo (difference = 0.65 points [-1.29, -0.01]).

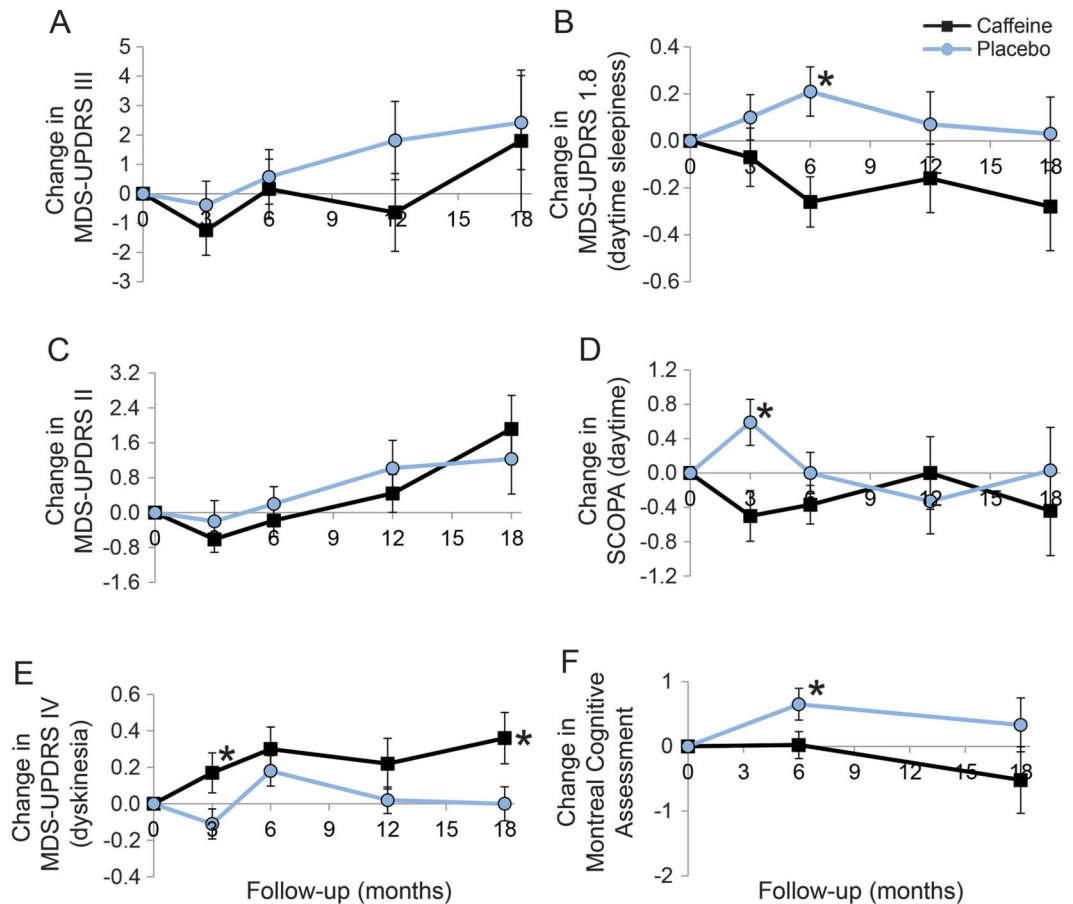
Results at other time points. At 3 months, results were broadly similar to 6 months (tables 3 and 4). Again there was no difference in MDS-UPDRS part III (0.85 points better in caffeine [-2.17, 1.46]). However, we noted a modest increase in dyskinesia severity (sum of MDS-UPDRS items 4.1 and 4.2) with caffeine

compared to placebo (0.28 [0.01, 0.55]). This increase was also partially seen at 6 months, but CIs clearly crossed zero (0.12 [-0.17, 0.41]). SCOPA-sleep daytime scores showed improvement (-1.09 [-1.88, -0.30] points), whereas the MDS-UPDRS somnolence score had equivocal change (-0.18 [-0.49, 0.18] points).

During stage II, a total of 88 patients were assessed at 12 months, and 66 at 18 months (tables 3 and 4). Again, results were broadly similar to 6 months. MDS-UPDRS III did not improve with caffeine at any time point (-2.5 [-6.2, 1.3] at 12 months, -0.62 [-6.5, 5.2] at 18 months). Dyskinesia scores were slightly higher at both 12 and 18 months; differences at 18 months were clearer [+0.36 (0.02-0.70) points]. Point estimates of MoCA scores at 18 months suggested a similar possible worsening in the caffeine group (0.85 [-0.48, 2.18] points). However, improvement in somnolence measures seen at 3-6 months attenuated with time, with both the UPDRS-sleepiness and SCOPA-sleep daytime scores showing minimal difference between groups at later intervals (e.g., SCOPA-sleepiness = +0.33 [-0.9 to 1.5] at 12 months, -0.47 [-1.9 to 1.0] at 18 months).

Overall, on statistical analysis combining all time points, we again found no substantial change in MDS-UPDRS-III (-0.96 [-3.43, 1.54] points).

Figure 2 Change from baseline in selected Parkinson disease measures in caffeine vs placebo



(A) Change in Movement Disorder Society-sponsored Unified Parkinson's Disease Rating Scale (MDS-UPDRS) III, (B) change in MDS-UPDRS 1.8 (daytime sleepiness), (C) change in MDS-UPDRS II, (D) change in Scales for Outcomes in PD (SCOPA) (daytime), (E) change in MDS-UPDRS IV (dyskinesia), (F) change in Montreal Cognitive Assessment. Note that the primary outcome is at 6 months; only a proportion of patients continued follow-up into 12 months (73%) and 18 months (55%). Error bars indicate standard error. The asterisk indicates a statistically significant difference between caffeine and placebo ($p < 0.05$).

MoCA worsened in the caffeine group by 0.66 (0.01, 1.32) points. Dyskinesia scores worsened by 0.25 (0.04, 0.45) points. Improvement on the SCOPA daytime sleepiness was equivocal (-0.42 [-1.09 , 0.25]), but UPDRS sleepiness scores were reduced (-0.31 [-0.58 , 0.05] points).

DISCUSSION In this study, we found that caffeine does not produce sustained motor improvement in PD. On exploratory secondary outcomes, we found small improvements in measures of alertness, counterbalanced by an overall increase in dyskinesia and a slight lowering of cognitive test scores in those receiving caffeine.

The key finding of this study is that caffeine provided no improvement in motor PD. This is in contrast to our previous study, which found a 3.2-point improvement in UPDRS (1987 version). Based upon published conversion rates between the new and old UPDRS versions, the 3.2-point improvement corresponds to a 3.8-point change (3.2×1.2). In the

current study, our 95% CI excludes this value (-3.2 , 2.3 points). It also excludes the MDS-UPDRS-III estimated minimal clinically important change.^{20,21} There are many potential explanations for this difference, including study population differences (the previous trial included only somnolent patients who were older, more often male, and with longer disease duration) and a slower caffeine dose escalation. Perhaps the most likely explanation may be the different trial durations (6 weeks vs 6 months). Caffeine has well-known tachyphylactic properties^{6,7}; so caffeine may have a short-term benefit, which quickly dissipates. Regardless, our core finding is that caffeine cannot be recommended as symptomatic therapy for parkinsonism.

On secondary analysis, we again found some evidence that caffeine has temporary benefit on daytime alertness. There was some improvement on the MDS-UPDRS daytime sleepiness question at 6 months, with equivocal lowering of SCOPA-sleep. In our previous study, the Epworth Sleepiness Scale

Table 3 Effects of caffeine at 3 months

| | Changes after 3 months | | |
|--|------------------------|------------------|---|
| | Caffeine (n = 57) | Placebo (n = 60) | Difference (95% CI) |
| Caffeine consumption, mg/d | -2.41 ± 27.3 | -8.12 ± 44.8 | 5.71 ± 6.93 (-8.04, 19.47) |
| Levodopa equivalents, mg | -0.85 ± 6.55 | 0.72 ± 22.8 | -1.56 ± 3.04 (-7.6, 4.5) |
| Systolic blood pressure drop, mm Hg | 0.47 ± 13.32 | 4.17 ± 13.08 | -3.70 ± 2.54 (-8.73, 1.33) |
| MDS-UPDRS part III | -1.25 ± 6.11 | -0.39 ± 6.17 | -0.86 ± 1.18 (-3.20, 1.47) |
| MDS-UPDRS part I | -0.19 ± 3.78 | -0.34 ± 3.20 | 0.15 ± 0.67 (-1.17, 1.47) |
| 1.7 Nighttime sleep | 0.00 ± 0.93 | -0.08 ± 0.99 | 0.08 ± 0.18 (-0.27, 0.44) |
| 1.8 Daytime somnolence | -0.07 ± 0.91 | 0.10 ± 0.74 | -0.18 ± 0.16 (-0.49, 0.13) |
| MDS-UPDRS part II | -0.61 ± 2.20 | -0.20 ± 3.64 | -0.41 ± 0.56 (-1.52, 0.70) |
| MDS-UPDRS part IV, dyskinesia, total | 0.17 ± 0.79 | -0.11 ± 0.62 | 0.28 ± 0.14 (0.01, 0.55 ^a) |
| MDS-UPDRS part IV, fluctuations, total | -0.10 ± 1.32 | -0.11 ± 1.19 | 0.01 ± 0.24 (-0.47, 0.49) |
| SCOPA-sleep nighttime | 0.50 ± 2.58 | -0.32 ± 2.40 | 0.82 ± 0.47 (-0.11, 1.75) |
| SCOPA-sleep daytime | -0.50 ± 2.16 | 0.59 ± 2.06 | -1.09 ± 0.40 (-1.88, -0.30 ^a) |
| Montreal Cognitive Assessment | NA | NA | NA |
| Beck Depression Inventory | NA | NA | NA |
| EQ-5D-5L | -0.13 ± 1.52 | 0.25 ± 2.18 | -0.39 ± 0.35 (-1.08, 0.31) |
| Clinical global impression—examiner | 3.06 ± 0.50 | 3.07 ± 0.49 | -0.01 ± 0.10 (-0.20, 0.18) |
| Clinical global impression—patient | 2.92 ± 0.81 | 3.07 ± 0.76 | -0.14 ± 0.15 (-0.44, 0.15) |

Abbreviations: CI = confidence interval; EQ-5D = EuroQoL 5-dimension; MDS-UPDRS = Movement Disorder Society-sponsored Unified Parkinson's Disease Rating Scale; SCOPA = Scales for Outcomes in PD.

Except for % variables, values are presented as mean ± SD.

^a95% CI that do not cross zero.

score (primary outcome) showed a nonsignificant improvement with caffeine (-1.71 points), with significantly improved clinical global impression of somnolence and significant improvement on per protocol analysis of the Epworth Sleepiness Scale (-1.97 points).⁵ Moreover, an open-label study of caffeine demonstrated reduced somnolence.⁴ This accords with the well-described effects of caffeine in the general population. Therefore, the balance of evidence suggests that caffeine probably has a modest effect on daytime somnolence or the sensation of alertness, which may wear off with prolonged exposure. Since caffeine is safe and generally well-tolerated, it seems reasonable to empirically try intermittent moderate doses of caffeine for somnolence, and repeat if improvement is seen.

There have been reports from observational studies that patients with PD who are caffeine users at baseline have less dyskinesia.^{22,23} Yet in this study, caffeine increased dyskinesia. This may be an effect of exposure time (i.e., caffeine prevents dyskinesia if provided before dopamine denervation or therapy, but increases dyskinesia if provided afterwards). Alternatively, this may be due to confounding in assessing markers of disease progression if those same markers also affect disease risk. For example, if a person develops PD despite years of exposure to a “protective”

factor (e.g., caffeine), it may be that their disease is either (1) pathophysiologically distinct from those with a more typical risk profile (different underlying genetic profile, different reward mechanisms) or (2) anatomically distinct (if a “protective” factor works only upon the substantia nigra, leaving other PD-affected areas unchanged, patients exposed to this factor would have more advanced disease outside the substantia nigra by the time they present with measurable parkinsonism). The resulting differences in disease subtypes/stages could result in different PD manifestations like dyskinesia.

On secondary analysis, we also found small worsening of the MoCA with caffeine (mostly from unmatched improvement in the placebo group). Studies in the general population, including elderly persons, generally find small improvements in cognition with caffeine,^{6,12,24} unlike our results. Therefore, it is difficult to speculate a clear plausible mechanism for this finding. It should be emphasized that as a secondary outcome, this was an exploratory finding²⁵; given multiple comparisons in the study, such findings may simply be chance.

Given the study results, what might be the implications for epidemiologic links between caffeine non-use and PD? Some explanations have become less likely. Since caffeine is relatively well-tolerated in

Table 4 Effects of caffeine at 12 and 18 months

| | Changes after 12 months | | | Changes after 18 months | | |
|--|-------------------------|-----------------------|-----------------------------|-------------------------|------------------|------------------------------|
| | Caffeine (n = 45) | Placebo (n = 43) | Difference (95% CI) | Caffeine (n = 25) | Placebo (n = 31) | Difference (95% CI) |
| Caffeine consumption, mg/d | -1.12 ± 54.2 | -1.56 ± 37.9 | 0.44 ± 9.97 (-19.40, 20.28) | -3.63 ± 45.50 | -4.98 ± 45.18 | 1.35 ± 12.19 (-23.13, 25.82) |
| Levodopa equivalents, mg | 41.3 ± 116.7 | 37.0 ± 94.0 | 4.30 ± 22.0 (-39.3, 47.9) | 32.1 ± 94.6 | 39.1 ± 83.5 | -7.0 ± 22.9 (-52.8, 38.8) |
| Systolic blood pressure drop, mm Hg | 1.13 ± 11.80 | 2.37 ± 13.76 | -1.23 ± 2.78 (-6.76, 4.29) | 3.00 ± 16.03 | -1.66 ± 25.89 | 4.66 ± 5.78 (-6.97, 16.28) |
| MDS-UPDRS part III | -0.64 ± 8.89 | 1.81 ± 8.75 | -2.46 ± 1.88 (-6.20, 1.28) | 1.80 ± 12.05 | 2.42 ± 8.92 | -0.62 ± 2.89 (-6.45, 5.22) |
| MDS-UPDRS part I | -0.44 ± 3.88 | -0.15 ± 3.64 | -0.29 ± 0.80 (-1.89, 1.30) | 0.12 ± 4.02 | 0.55 ± 4.77 | -0.43 ± 1.18 (-2.79, 1.93) |
| 1.7 Nighttime sleep | -0.29 ± 2.83 | -0.26 ± 2.84 | -0.03 ± 0.60 (-1.24, 1.77) | 1.00 ± 2.31 | -0.29 ± 2.73 | 1.29 ± 0.67 (-0.06, 2.64) |
| 1.8 Daytime somnolence | 0.00 ± 2.84 | -0.33 ± 2.48 | 0.33 ± 0.57 (-0.80, 1.45) | -0.44 ± 2.60 | 0.03 ± 2.79 | -0.47 ± 0.72 (-1.92, 0.98) |
| MDS-UPDRS part II | 0.44 ± 2.90 | 1.02 ± 4.16 | -0.58 ± 0.77 (-2.11, 0.95) | 1.92 ± 3.84 | 1.23 ± 4.48 | 0.69 ± 1.11 (-1.54, 2.92) |
| MDS-UPDRS part IV, dyskinesia, total | 0.22 ± 0.93 | 0.02 ± 0.47 | 0.20 ± 0.16 (-0.11, 0.51) | 0.36 ± 0.70 | 0.00 ± 0.52 | 0.36 ± 0.17 (0.02, 0.70) |
| MDS-UPDRS part IV, fluctuations, total | 0.20 ± 1.14 | 0.36 ± 1.78 | -0.16 ± 0.32 (-0.80, 0.49) | 0.40 ± 0.96 | 0.35 ± 1.47 | 0.05 ± 0.33 (-0.06, 2.64) |
| SCOPA-sleep nighttime | -0.29 ± 2.83 | -0.26 ± 2.84 | -0.03 ± 0.60 (-1.24, 1.17) | 1.00 ± 2.31 | -0.29 ± 2.73 | 1.29 ± 0.67 (-0.12, 1.71) |
| SCOPA-sleep daytime | 0.00 ± 2.84 | -0.33 ± 2.48 | 0.33 ± 0.57 (-0.80, 1.45) | -0.44 ± 2.60 | 0.03 ± 2.79 | -0.47 ± 0.72 (-1.92, 0.98) |
| Montreal Cognitive Assessment | (-0.17 ± 0.98) (n = 6) | (0.25 ± 2.63) (n = 4) | -0.42 ± 1.37 (-4.42, 3.59) | -0.52 ± 2.57 | 0.33 ± 2.28 | -0.85 ± 0.66 (-2.18, 0.48) |
| Beck Depression Inventory | 0.67 ± 11.1 | 6.00 ± 5.66 | -5.33 ± 5.33 (-17.70, 7.03) | -0.81 ± 6.00 | -1.52 ± 3.49 | 0.71 ± 1.68 (-2.77, 4.20) |
| EQ-5D-5L | 0.27 ± 2.09 | 0.93 ± 2.73 | -0.66 ± 0.52 (-1.70, 0.38) | 0.84 ± 2.34 | 1.39 ± 2.47 | -0.55 ± 0.65 (-1.84, 0.75) |
| Clinical global impression—examiner | 3.00 ± 1.41 | 3.00 ± 0.82 | 0.00 ± 0.75 (-1.81, 1.81) | 3.00 ± 0.63 | 2.71 ± 1.11 | 0.20 ± 1.02 (-2.22, 2.62) |
| Clinical global impression—patient | 3.20 ± 1.64 | 3.00 ± 1.41 | -0.14 ± 0.15 (-0.44, 0.15) | 2.67 ± 0.82 | 2.43 ± 0.79 | 0.24 ± 0.45 (-0.75, 1.23) |

Abbreviations: CI = confidence interval; EQ-5D = EuroQoL 5-dimension; MDS-UPDRS = Movement Disorder Society-sponsored Unified Parkinson's Disease Rating Scale; SCOPA = Scales for Outcomes in PD. Except for % variables, values are presented as mean ± SD.

PD, reverse causality from side effects in prodromal disease becomes less probable. Similarly, since caffeine seems to have some alerting effects in PD, reverse causality related to loss of alerting benefit in prodromal stages becomes less probable. Also, given absent motor benefit, the lower risk cannot be simply explained as confounded by symptomatic treatment (caffeine, by treating motor PD, prevents diagnosis). Moreover, the absence of clinically meaningful symptomatic benefit documented in this trial is an important finding with respect to study design in any future disease-modifying trial. Our findings, however, do not necessarily imply that caffeine must be neuroprotective. First, although power is obviously limited, we saw no clear signal that motor measures were diverging between groups from 6 to 18 months. Second, and most critically, other plausible explanations remain, particularly residual confounding. For example, a similar inverse relationship exists between smoking and PD. A recent study found that patients developing PD

find quitting smoking easier in the prodromal period,²⁶ suggesting that systems of reward dependence/behavior reinforcement may differ in those at risk of PD, confounding the link.

Some limitations should be noted. All findings related to somnolence, cognition, and dyskinesia were secondary outcomes, and should be considered exploratory²⁵; some may be chance findings. The study was not specifically designed to assess changes in dyskinesia, fluctuations, or dementia risk. Our SD of the estimated change in MDS-UPDRS-III was higher than expected (i.e., 6.2 and 7.3 vs the 4.5 observed in our original article). Therefore, we focused our result interpretation on the 95% CI, which excludes a >3.2-point improvement of MDS-UPDRS-III. We did not include biologic measures of caffeine or its metabolites; residual non-compliance could have affected results. The caffeine dose chosen was based upon previous studies and upon caffeine use patterns in the population (in which epidemiologic findings were observed)¹²;

higher caffeine doses or other A2A antagonists may have different effects. Patients were assessed in the medication “on” state; using medication-naïve patients or “off” evaluations might have different findings. The study was prematurely terminated, because analysis suggested that finding meaningful symptomatic benefit at longer time intervals was very unlikely. For example, the 18-month point estimate of difference for total MDS-UPDRS was 0.9 points. Even if this difference doubled over subsequent years, the study would have required approximately 1,000 patients for 80% power (our protocol had only 250). Note again that this was a trial of symptomatic therapy, and did not address potential disease modification.

Caffeine did not provide sustained symptomatic benefit on parkinsonism in PD. There may be temporary alerting effects, which need to be counterbalanced against potential increased dyskinesia and cognitive test worsening.

Comment: Caffeine and PD—Time to consider other interventions

Caffeine had shown promise in a small (61 patients), short (6 weeks), randomized study¹ for improving motor function in patients with Parkinson disease. Caffeine holds appeal as an inexpensive intervention that is well-tolerated in most individuals. The investigators for that small study now report the results of a multicenter randomized study² using the same outcome. They designed the study to have approximately 4 times as many participants, an extended follow-up to evaluate the persistence of any effects, and adequate power to detect a similar effect size as observed in the smaller study. The study focused on symptomatic improvement and not disease progression given the lack of any biological model in which caffeine would affect the latter.

The study appears well-run and not biased by differential compliance or loss to follow-up. Disappointingly, caffeine showed no benefit compared to placebo on the primary outcome or on important secondary outcomes. Terminated early for lack of efficacy, the study only enrolled approximately half the intended total and completed only 18 months of follow-up. Although the small number of participants ($n = 121$) resulted in a wide confidence interval and cannot exclude a small effect, this trial suggests that caffeine does not significantly improve Parkinson disease symptoms and that it should not be a priority for future Parkinson disease intervention studies.

Promising leads must be studied, and disappointing findings be disseminated to the research and clinical communities. Researchers can now focus on more promising intervention targets and clinicians now know that any effects of caffeine are likely small and not better than placebo. Hopefully future studies will find more effective interventions.

1. Postuma RB, Lang AE, Munhoz RP, et al. Caffeine for treatment of Parkinson disease: a randomized controlled trial. *Neurology* 2012;79:651–658.
2. Postuma RB, Anang J, Pelletier A, et al. Caffeine as symptomatic treatment for Parkinson disease (Café-PD): a randomized trial. *Neurology* 2017;89:1795–1803.

Charles B. Hall, PhD

From the Department of Epidemiology and Population Health, Albert Einstein College of Medicine, Bronx, NY.

Study funding: No targeted funding reported.

Disclosure: Dr. Hall receives or has recently received salary support from the National Institute of Occupational Safety and Health, National Institute of Aging, National Cancer Institute, and National Center for Advancing Translational Sciences. Dr. Hall has also received honoraria, consulting fees, or other income from Washington University St. Louis for serving on an External Advisory Committee, from University of Cincinnati for speaking, and from the NIH for serving as a member of a Study Section. Go to Neurology.org for full disclosures.

AUTHOR CONTRIBUTIONS

R.B.P. conceptualized the study, collected data, performed analysis, and drafted the initial version of the manuscript. J.A., M.M., D.G., S.F., R.M., S.C., A.M., A.B., and D.H. were responsible for generating data and for revision of the manuscript. A.P. was responsible for data collection, data analysis, and revising the manuscript. L.J. was responsible for data analysis and revision of the manuscript. A.E.L. was responsible for study conceptualization, generating data, and revision of the manuscript.

STUDY FUNDING

Supported by Canadian Institute of Health Research, Webster Foundation, Fonds de Recherche du Québec-Santé.

DISCLOSURE

R.B. Postuma received grant funding from Canadian Institute of Health Research, Webster Foundation, and Fonds de Recherche du Québec-Santé for this study. J. Anang, A. Pelletier, L. Joseph, M. Moscovich, D. Grimes, S. Furtado, R.P. Munhoz, S. Appel-Cresswell, A. Moro, A. Borys, D. Hobson, and A.E. Lang report no disclosures relevant to the manuscript. Go to Neurology.org for full disclosures.

Received January 27, 2017. Accepted in final form August 2, 2017.

REFERENCES

1. Noyce AJ, Bestwick JP, Silveira-Moriyama L, et al. Meta-analysis of early nonmotor features and risk factors for Parkinson disease. *Ann Neurol* 2012;72:893–901.
2. Chen X, Lan X, Roche I, Liu R, Geiger JD. Caffeine protects against MPTP-induced blood-brain barrier dysfunction in mouse striatum. *J Neurochem* 2008;107:1147–1157.
3. Schwarzschild MA, Chen JF, Ascherio A. Caffeinated clues and the promise of adenosine A(2A) antagonists in PD. *Neurology* 2002;58:1154–1160.
4. Altman RD, Lang AE, Postuma RB. Caffeine in Parkinson's disease: a pilot open-label, dose-escalation study. *Mov Disord* 2011;26:2427–2431.
5. Postuma RB, Lang AE, Munhoz RP, et al. Caffeine for treatment of Parkinson disease: a randomized controlled trial. *Neurology* 2012;79:651–658.
6. Higdon JV, Frei B. Coffee and health: a review of recent human research. *Crit Rev Food Sci Nutr* 2006;46:101–123.
7. Harland BF. Caffeine and nutrition. *Nutrition* 2000;16:522–526.
8. Hughes AJ, Daniel SE, Kilford L, Lees AJ. Accuracy of clinical diagnosis of idiopathic Parkinson's disease: a clinico-pathological study of 100 cases. *J Neurol Neurosurg Psychiatry* 1992;55:181–184.
9. Hughes AJ, Daniel SE, Lees AJ. Improved accuracy of clinical diagnosis of Lewy body Parkinson's disease. *Neurology* 2001;57:1497–1499.
10. Nasreddine ZS, Phillips NA, Bedirian V, et al. The Montreal Cognitive Assessment, MoCA: a brief screening tool for mild cognitive impairment. *J Am Geriatr Soc* 2005;53:695–699.
11. Beck AT, Ward CH, Mendelson M, Mock J, Erbaugh J. An inventory for measuring depression. *Arch Gen Psychiatry* 1961;4:561–571.
12. Barone JJ, Roberts HR. Caffeine consumption. *Food Chem Toxicol* 1996;34:119–129.
13. Goetz CG, Tilley BC, Shaftman SR, et al. Movement Disorder Society-sponsored revision of the Unified Parkinson's Disease Rating Scale (MDS-UPDRS): scale presentation and clinimetric testing results. *Mov Disord* 2008;23:2129–2170.

14. Marinus J, Visser M, van Hilten JJ, Lammers GJ, Stiggelbout AM. Assessment of sleep and sleepiness in Parkinson disease. *Sleep* 2003;26:1049–1054.
15. Postuma RB, Arnulf I, Hogl B, et al. A single-question screen for rapid eye movement sleep behavior disorder: a multicenter validation study. *Mov Disord* 2012;27:913–916.
16. The EuroQol Group. EuroQol: a new facility for the measurement of health-related quality of life. *Health Policy* 1990;16:199–208.
17. Hobson DE, Lang AE, Martin WR, Razmy A, Rivest J, Fleming J. Excessive daytime sleepiness and sudden-onset sleep in Parkinson disease: a survey by the Canadian Movement Disorders Group. *JAMA* 2002;287:455–463.
18. Hauser RA, Stocchi F, Rascol O, et al. Preladenant as an adjunctive therapy with levodopa in Parkinson disease: two randomized clinical trials and lessons learned. *JAMA Neurol* 2015;72:1491–1500.
19. Pinna A. Adenosine A2A receptor antagonists in Parkinson's disease: progress in clinical trials from the newly approved istradefylline to drugs in early development and those already discontinued. *CNS Drugs* 2014;28:455–474.
20. Horvath K, Aschermann Z, Acs P, et al. Minimal clinically important difference on the motor examination part of MDS-UPDRS. *Parkinsonism Relat Disord* 2015;21:1421–1426.
21. Schrag A, Sampaio C, Counsell N, Poewe W. Minimal clinically important change on the Unified Parkinson's Disease Rating Scale. *Mov Disord* 2006;21:1200–1207.
22. Wills AM, Eberly S, Tennis M, et al. Caffeine consumption and risk of dyskinesia in CALM-PD. *Mov Disord* 2013;28:380–383.
23. Scott NW, Macleod AD, Counsell CE. Motor complications in an incident Parkinson's disease cohort. *Eur J Neurol* 2016;23:304–312.
24. Nehlig A. Is caffeine a cognitive enhancer? *J Alzheimers Dis* 2010;20(suppl 1):S85–S94.
25. Bender R, Lange S. Adjusting for multiple testing: when and how? *J Clin Epidemiol* 2001;54:343–349.
26. Ritz B, Lee PC, Lassen CF, Arah OA. Parkinson disease and smoking revisited: ease of quitting is an early sign of the disease. *Neurology* 2014;83:1396–1402.

NEW Career Essentials Conference: January 13-15, 2018

Mark your calendars for the AAN's newest conference, Career Essentials: Foundation for Your Future, set to take place January 13–15, 2018, at the Caribe Royale in Orlando, FL, co-located with the Breakthroughs in Neurology conference. Designed specifically for neurologists in private practice and academia who are no more than five years post-residency, this family-friendly conference will offer an excellent opportunity for early career neurologists to learn things they weren't taught in residency that will help lay the foundation for a successful career. Register before January 3, 2018, at AAN.com/view/CareerEssentials.

WriteClick® rapid online correspondence

The editors encourage comments about recent articles through WriteClick:

Go to *Neurology.org* and click on the “WriteClick” tab at the top of the page. Responses will be posted within 72 hours of submission.

Before using WriteClick, remember the following:

- WriteClick is restricted to comments about studies published in *Neurology* within the last eight weeks
- Read previously posted comments; redundant comments will not be posted
- Your submission must be 200 words or less and have a maximum of five references; reference one must be the article on which you are commenting
- You can include a maximum of five authors (including yourself)