

Mitigating Mitochondrial Genome Erosion Without Recombination

Arunas L. Radzvilavicius,^{*,†,1} Hanna Kokko,^{*} and Joshua R. Christie^{*}

^{*}Department of Evolutionary Biology and Environmental Studies, University of Zürich, 8057, Switzerland and [†]Department of Biology, University of Pennsylvania, Philadelphia, Pennsylvania 19104

ABSTRACT Mitochondria are ATP-producing organelles of bacterial ancestry that played a key role in the origin and early evolution of complex eukaryotic cells. Most modern eukaryotes transmit mitochondrial genes uniparentally, often without recombination among genetically divergent organelles. While this asymmetric inheritance maintains the efficacy of purifying selection at the level of the cell, the absence of recombination could also make the genome susceptible to Muller's ratchet. How mitochondria escape this irreversible defect accumulation is a fundamental unsolved question. Occasional paternal leakage could in principle promote recombination, but it would also compromise the purifying selection benefits of uniparental inheritance. We assess this tradeoff using a stochastic population-genetic model. In the absence of recombination, uniparental inheritance of freely-segregating genomes mitigates mutational erosion, while paternal leakage exacerbates the ratchet effect. Mitochondrial fusion–fission cycles ensure independent genome segregation, improving purifying selection. Paternal leakage provides opportunity for recombination to slow down the mutation accumulation, but always at a cost of increased steady-state mutation load. Our findings indicate that random segregation of mitochondrial genomes under uniparental inheritance can effectively combat the mutational meltdown, and that homologous recombination under paternal leakage might not be needed.

KEYWORDS Muller's ratchet; mitochondrial recombination; paternal leakage; uniparental inheritance; maternal inheritance

MITOCHONDRIA are descendants of free-living bacteria that became endosymbiotic within an archaeal host cell at the dawn of eukaryote evolution (Martin *et al.* 2015). Most of the proto-mitochondrial endosymbiont genes were either lost or transferred to the nucleus, leaving a diminutive genome of 37 genes in vertebrates, and up to ~100 genes in early-branching eukaryotes (Burger *et al.* 2003). Oxidative phosphorylation (OXPHOS)—the most critical function of mitochondria in modern eukaryotes—depends on the genomic stability and maintenance of these genes, as well as interactions between mitochondrial and nuclear genes that both encode subunits of respiratory chain protein complexes. Mitochondrial mutations can result in debilitating diseases and neuromuscular deterioration in humans (Taylor and Turnbull 2005; Wallace 2010), while mitochondrial–nuclear

mismatches can induce negative developmental, fertility, and cognitive effects (Wolff *et al.* 2014).

Eukaryotic sex involves the inheritance of nuclear genes from both parents, but is highly asymmetric in transmission of mitochondrial genes. In higher eukaryotes, mitochondria are predominantly inherited from the maternal gamete. This asexual mode of mitochondrial transmission, along with reduced effective population size and relatively high nucleotide substitution rates, has been suggested to cause gradual deterioration of the mitochondrial genome (Lynch 1996; Lynch *et al.* 2006; Neiman and Taylor 2009; Greiner *et al.* 2015) through recurrent stochastic losses of the least-loaded genome class, a concept known as Muller's ratchet (Muller 1964; Felsenstein 1974). Muller's ratchet in asexual endosymbiont genomes was likely one of the major forces driving an early massive gene transfer from proto-mitochondria to the emerging eukaryotic nucleus (Martin and Herrmann 1998; Timmis *et al.* 2004), establishing the nuclear–mitochondrial asymmetry in genome size. Nevertheless, a handful of essential genes remain localized within modern mitochondria (Race *et al.* 1999), and were lost only in mitochondrion-derived organelles that do not perform OXPHOS, such as hydrogenosomes and

Copyright © 2017 by the Genetics Society of America
doi: <https://doi.org/10.1534/genetics.117.300273>

Manuscript received May 29, 2017; accepted for publication September 1, 2017; published Early Online September 11, 2017.

Supplemental material is available online at www.genetics.org/lookup/suppl/doi:10.1534/genetics.117.300273/-/DC1.

¹Corresponding author: Department of Biology, University of Pennsylvania, Carolyn Lynch Laboratory, 433 South University Ave., Philadelphia, PA 19104. E-mail: ucbprad@ucl.ac.uk

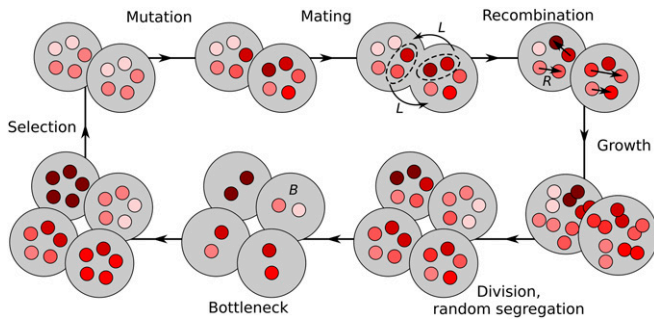


Figure 1 Model life cycle. Each cell contains M mitochondrial genomes (red circles), accumulating mutations (shades of red) in their K loci (not shown). Mating is modeled as paternal leakage with rate L and mitochondrial recombination (rate R). Cells then replicate their mitochondrial populations and divide randomly-segregating mitochondria to the two daughter cells. Mitochondrial bottleneck is modeled as random reduction of the number of mitochondria per cell from M to B , and subsequent amplification back to M . The life cycle ends with selection against cells with lowest mitochondrial fitness.

mitosomes. Therefore, there is a strong evolutionary pressure for retention of these genomic outposts at the energy-generating membranes, which requires mechanisms mitigating mutational deterioration.

Multiple lines of empirical evidence suggest that mitochondrial genomes of modern eukaryotes could be protected against a ratchet-like mutational meltdown (Rand 2008; Stewart *et al.* 2008). Unlike the mammalian Y chromosome, the animal mitochondrial genome is not subject to the accumulation of transposable elements, and has a remarkably stable gene content (Boore 1999). Additionally, nonsynonymous substitution rates for mitochondrial genes coding for respiratory chain subunits are in many cases lower than substitution rates in nuclear loci (Popadin *et al.* 2013; Zhang and Broughton 2013; Cooper *et al.* 2015) and free-living prokaryotes (Itoh *et al.* 2002). This implies strong purifying selection against mitochondrial mutations, and challenges the conventional prediction that animal mitochondrial genomes are subject to excessive accumulation of detrimental substitutions (Lynch 1996; Lynch and Blanchard 1998; Neiman and Taylor 2009).

Uniparental inheritance (UPI) of mitochondrial genes facilitates purifying selection at the level of the cell by maintaining high cell-to-cell variance in mutation load (Bergstrom and Pritchard 1998; Hadjivasiliou *et al.* 2013; Christie and Beekman 2017a). Furthermore, UPI limits heteroplasmy (Christie *et al.* 2015), facilitates adaptive evolution (Christie and Beekman 2017a,b), and improves mitonuclear coadaptation (Hadjivasiliou *et al.* 2012, 2013), and could have played an important role in the origin of self-incompatible mating types and sexual dimorphism in higher metazoans (Hurst and Hamilton 1992; Radzvilavicius *et al.* 2016). The rule of strict UPI can be partially broken (termed paternal leakage) or completely absent (biparental inheritance). Under those conditions, theoretical modeling makes opposite predictions: less efficient selection against defective cytoplasmic genes, increased mutational load at equilibrium, and easier spread of selfish genetic elements (Roze *et al.* 2005).

Table 1 List of parameters and symbols

| | Population Size |
|---------------|--|
| N | |
| μ | Mutation rate per mitochondrial genome per generation |
| s | Fitness effect of a mitochondrial mutation |
| M | Number of mitochondrial genomes per cell |
| L | Paternal leakage, mitochondria per cell per generation |
| R | Mitochondrial recombination rate, per cell per generation |
| K | Number of mitochondrial loci |
| B | Bottleneck size |
| C | Mitochondrial cluster size |
| F | Genome migration rate within the cell |
| $H_{LLC(+1)}$ | Gene diversity of the least-loaded (second least-loaded) class |

These theoretical arguments suggest that asymmetric inheritance plays an important role in keeping mitochondria healthy, but it is not clear whether purifying cell-level selection alone can provide sufficient protection against Muller's ratchet in small populations. UPI promotes mitochondrial clonality (homoplasmy) within the cell, and therefore limits the scope and potential effects of homologous recombination, without which the population-wide fixation of mutations is irreversible. It has been proposed that the long-term stability of the mitochondrial genome requires episodic reversion to biparental transmission (paternal leakage), which elevates effective recombination rates and is thus argued to slow down mitochondrial genome erosion (Hoekstra 2000; Neiman and Taylor 2009; Dokianakis and Ladoukakis 2014; Greiner *et al.* 2015).

While homologous recombination is the key mechanism countering Muller's ratchet under haploid population genetics (Felsenstein 1974), the interplay between mutation accumulation and recombination in organelle genomes is more complex and less well understood. Mitochondrial DNA exists in a nested hierarchy of several genome copies within a mitochondrial nucleoid (Satoh and Kuroiwa 1991; Jacobs *et al.* 2000), multiple nucleoids within an organelle, and many organelles per cell (Satoh and Kuroiwa 1991; Rand 2001). Selection against deleterious mitochondrial mutations operates mostly through their effects on the host cell fitness, that is, at the level of the group of mitochondrial genomes. The composition of these groups of mitochondrial genomes changes due to random organelle segregation at cell division, stochastic sampling in bottleneck-like processes, paternal leakage, and recombination. Cell-level performance may not be strongly compromised if only one or a few of its many mitochondria acquire mutations (Rossignol *et al.* 2003).

Random mitochondrial segregation at cell division increases mutational variance, meaning that mitochondrial mutation load of the daughter cell could markedly differ from the parent. Relative to strict uniparental transmission, paternal leakage reduces this variance, which hinders the host-level selection against deleterious mutations and increases steady-state mutation load (Bergstrom and Pritchard 1998; Hadjivasiliou *et al.* 2013). But without paternal leakage, homologous recombination has little effect, as intracellular variance in this case comes only from *de novo* mutations.

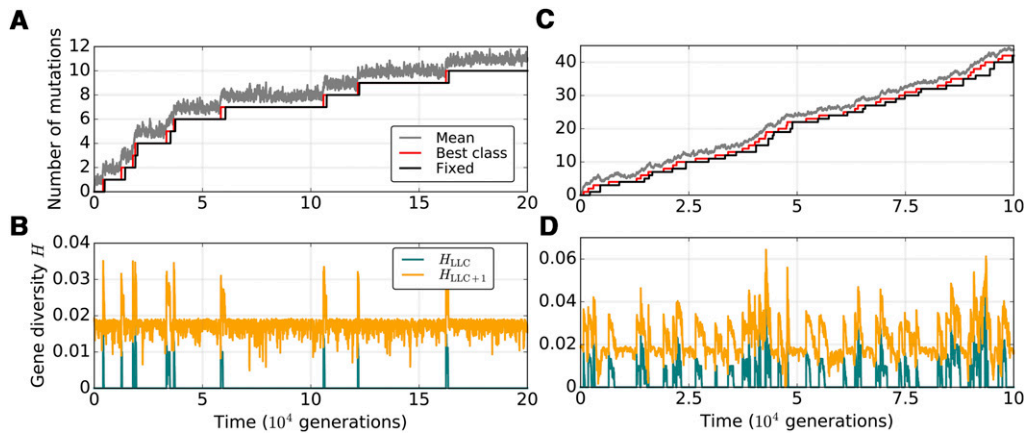


Figure 2 Mutation accumulation profiles in mitochondrial genomes of a small eukaryotic population with no recombination. (A and C) Population mean of the deleterious mutation load (gray), the number of mutations in the least-mutated genome class (red), and the number of mutations fixed within the population (black). (B and D) Gene diversity in the least-loaded (teal, $H_{LL,C}$) and the second least-loaded class (orange, $H_{LL,C+1}$). Population size is set to $N = 500$, $M = 20$, $\mu = 0.005$, and $C = 1$. Here, $s = 0.02$ and $K = 100$. The rate of paternal leakage is $L = 0.8$ (A and B) or $L = 5.0$ (C and D).

There is therefore a tradeoff between the two mechanisms: paternal leakage increases the opportunity for mitochondrial recombination, but reduces the efficacy of selection at the level of the host cell. To the best of our knowledge, there is no formal theory examining how the balance between UPI on the one hand, and paternal leakage and recombination on the other, affects the accumulation of deleterious mutations.

To understand the dynamics of mitochondrial mutation accumulation under paternal leakage and recombination, we developed a population–genetic model of a unicellular species subject to purifying cell-level selection. Consistent with previous studies, we find that paternal leakage relaxes selection against defective mitochondrial genes, and in the absence of recombination severely increases the rate of mutation fixation. Clustering of mitochondrial DNA into strongly-linked groups (such as nucleoids or organelles) reduces segregational drift and further accelerates genome degradation. Strict UPI and tight bottlenecks in mitochondrial population size, on the other hand, protect against Muller’s ratchet even without recombination, due to increased cell-to-cell variance in mutation load. When there is paternal leakage, homologous recombination can reduce the rate of mutation fixation, but the increase in steady-state mutational load due to mitochondrial mixing remains. Taken together, our results indicate that random segregational drift in UPI alone could mitigate the mutational meltdown in mitochondrial genes, and that homologous recombination might not be necessary.

Materials and Methods

We developed a stochastic model representing a finite population of unicellular eukaryotes, containing M mitochondrial genomes each (Figure 1). Each discrete generation consists of nonoverlapping steps of (1) mitochondrial mutation, (2) mating with cytoplasmic mixing in the form of paternal leakage, (3) cell division with a bottleneck, and (4) selection. This particular order of events is representative of a haploid life cycle (*i.e.*, selection acts after syngamy and meiosis), but the order could be altered without major implications to our

main conclusions. The population size is fixed at N . Definitions of symbols and model parameters are given in Table 1. The model was implemented in C++ with the source code available as Supplemental Material, File S1.

Mutation

The mitochondrial genome is modeled as a set of K loci, each locus representing a segment that can be replaced by a single recombination event. At the start of a generation, each genome within the cell acquires a Poisson-distributed number of new mutations (mean μ). These new mutations are distributed randomly among the K loci, independent of the current mutational state of a locus. We track the number of deleterious point mutations within each locus assuming that this has no upper limit and so ensuring that the pace of mutation fixation (dm/dt) under the multiplicative fitness function remains constant (Takeuchi *et al.* 2014). Back mutations are ignored, so that the fixation of a mutant allele within a locus is irreversible.

Paternal leakage and recombination

We consider two major levels of gene mixing: paternal leakage and recombination. Following mutation, we randomly divide the population into $N/2$ pairs for mating, assuming no mating types or sexes. Each pair of cells exchanges a Poisson-distributed number of mitochondria (mean L). Since the number of organelles exchanged between mating partners cannot exceed M , we use a truncated Poisson distribution and consider only values of paternal leakage L between 0 and $M/2$. The number of mitochondrial genomes exchanged is drawn independently for each mating pair.

The next step is homologous recombination within the cell. This is modeled as the exchange of a Poisson-distributed number of alleles (mean R per cell) between mitochondrial genome pairs. The participating genomes are chosen randomly for each homologous gene transfer event, as is the recombining locus. For the sake of simplicity, gene transfer between mitochondria is unidirectional, from the donor genome to the recipient, and thus resembles horizontal gene transfer in prokaryotes (Takeuchi *et al.* 2014).

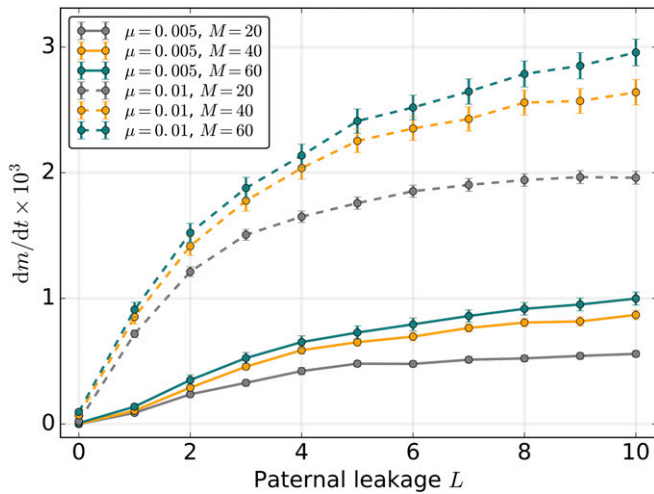


Figure 3 Strict uniparental inheritance of small freely-segregating mitochondrial populations mitigates the mutational meltdown in the absence of mitochondrial recombination. Here, dm/dt denotes the rate of mutation accumulation. Mutation rate is $\mu = 0.005$ (solid lines) or $\mu = 0.01$ (dashed lines), population size $N = 500$, and $C = 1$. Here, $s = 0.02$ and $K = 100$. Error bars indicate the 95% C.I.s for the SEM ($\pm 1.96\sqrt{m_{fix}/t^2}$, where m_{fix} is the number of fixed mutations after t generations).

Cell division

Each cell replicates its mitochondrial population by clonal doubling, after which M genomes are transmitted to a daughter cell (sampling without replacement). This process of random segregation increases cell-to-cell variance in mitochondrial mutational load, producing daughter cells that can carry more or fewer mutations than the parent. To model the clustering of mitochondrial genomes into nucleoids or organelles, we assume M/C clusters in which C mitochondrial genomes are tightly linked. At cell division, each cluster segregates as a unit. With $C = 1$ (our default assumption) all M mitochondrial genomes replicate and segregate independently, while with $C = M$ the daughter cell is a clonal copy of the parent. However, the genomic composition of the cluster is not necessarily permanent. Therefore, we consider random redistribution of mitochondrial genomes within the cell (between clusters, *e.g.*, between mitochondria with multiple mtDNA molecules), which precedes cell division. This is modeled as an exchange of mitochondrial genomes within the cell, with the total number of genome pairs that exchange their locations F_{tot} following the Poisson distribution (mean migration rate F). When $F = 0$, mtDNA clusters are permanently linked, and replicate as a cohesive whole. With high values of F , mtDNA packaging into clusters is random, *i.e.*, clusters are regenerated from the whole mtDNA population of the cell before each cell division.

Finally, we consider the effect of mitochondrial bottlenecks. Following cell division, the mitochondrial genome population is reduced through random sampling without replacement from M down to B , and then increased back to M through error-free replication. Lower values of B therefore represent tighter bottlenecks. The bottleneck is simply a

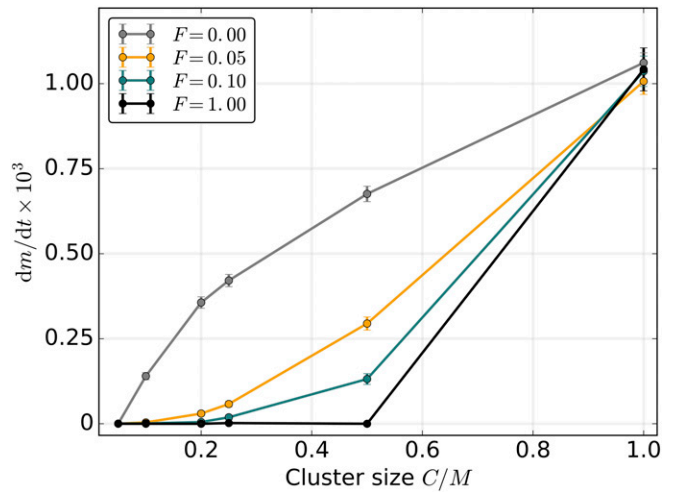


Figure 4 Mitochondrial genome clustering promotes mutation accumulation. Nonrandom clustering of mitochondrial genomes into tightly linked groups of size C increases dm/dt due to suppression of segregational drift at cell division. However, if the clusters are allowed to exchange genomes between cell divisions, even very low migration rates F prevent the operation of Muller's ratchet. F is the number of genome migration events per cell per generation, $\mu = 0.005$, $N = 500$, $M = 20$, and $L = 0$. Here, $s = 0.02$ and $K = 100$. Error bars indicate the 95% C.I.s for the SEM ($\pm 1.96\sqrt{m_{fix}/t^2}$, where m_{fix} is the number of fixed mutations after t generations).

mechanism of reducing mutational variance within the cell (increasing homoplasmy), and the precise details of how this is achieved in real biological systems (Cao *et al.* 2007, 2009; Wai *et al.* 2008; Johnston *et al.* 2015) are not relevant for our purposes.

Selection

The life cycle ends with selection among cells, which we model as weighted random sampling of N individuals with replacement, with cell fitness values forming the weights. All mutations are assumed to contribute equally to the deleterious fitness effect without epistasis, so that the fitness contribution of a mitochondrial genome with m point mutations is $w_m = (1-s)^m$. Cell fitness is then the arithmetic mean of its M mitochondrial fitness contributions. This does not account for the intermitochondrial epistatic interactions nor the mitochondrial threshold effects for which a concave-down cellular fitness function would be a better choice (Hadjivasilou *et al.* 2013), but guarantees that dm/dt does not depend on the total mutational load of the cell. Including such threshold effects results in an initially fast ratchet rate dm/dt , which slows down as the mitochondrial fitness approaches the threshold—an effect previously described by Kondrashov (1994)—which, in our case, complicates the evaluation of dm/dt . Surviving cells give start to a new generation.

Data availability

The authors state that all data necessary for confirming the conclusions presented in the article are represented fully within the article.

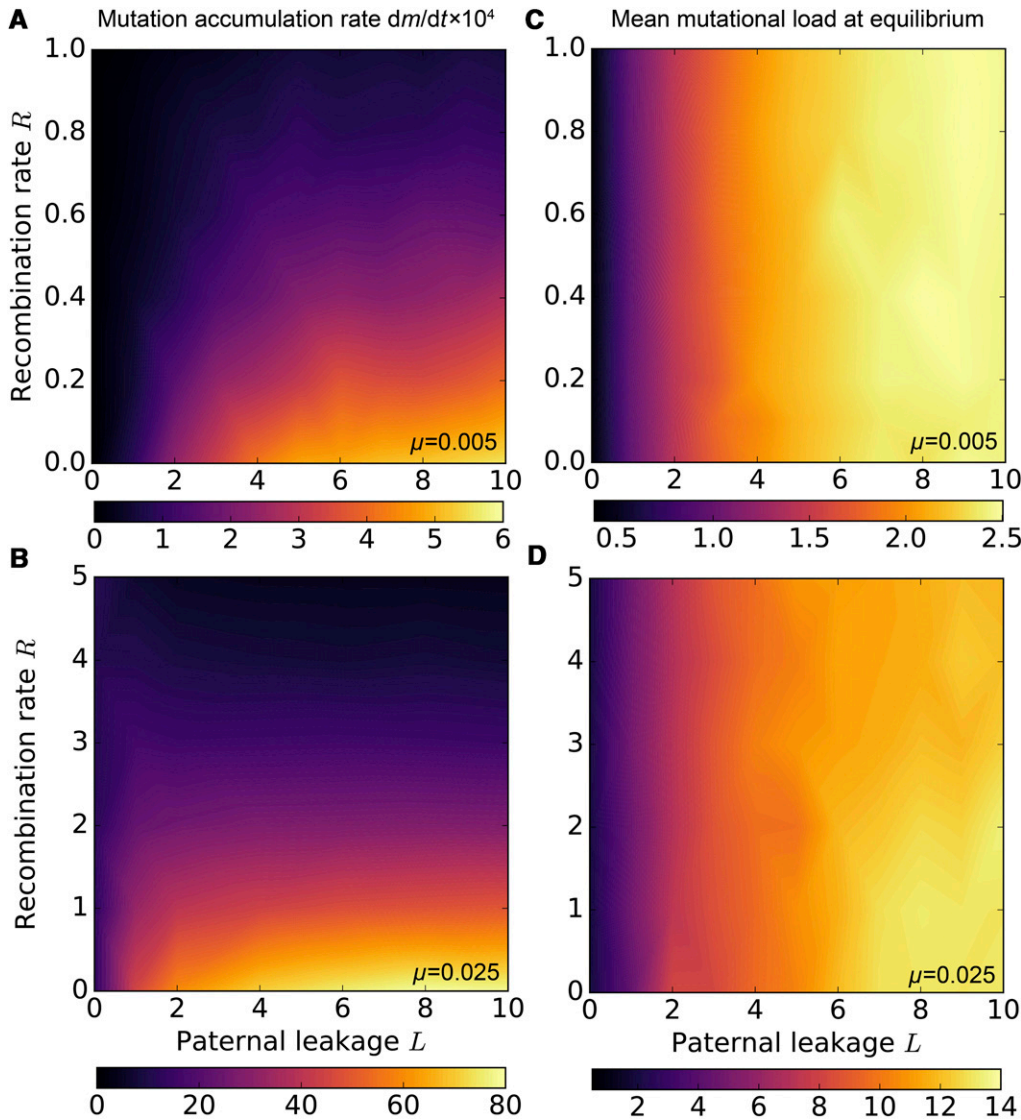


Figure 5 Tradeoff between the antagonistic effects of paternal leakage and mitochondrial recombination. Homologous recombination slows down the accumulation of weakly deleterious mitochondrial mutations, but requires paternal leakage, which itself—in the absence of recombination—promotes mutational erosion (A and B). With high μ and R , paternal leakage can reduce the rate of mutation accumulation relative to uniparental inheritance (B, dark regions). Nevertheless, mitochondrial mixing in the form of paternal leakage L increases the mean mutational load at equilibrium, regardless of mitochondrial recombination (C and D). Parameter values are $\mu = 0.005$ (A and C) or $\mu = 0.025$ (B and D), population size $N = 500$ (A and B) and $N = 10,000$ (C and D), and $M = 20$. The number of mutation in the least-loaded genome class is $m_{LLC} = 0$ in (C and D).

Results

Dynamics of mitochondrial mutation accumulation and fixation

We first explored the general behavior of the model in the absence of mitochondrial recombination by following mutation accumulation and population-wide fixation in freely-segregating mitochondria (Figure 2). We also analyzed the time-evolution of the average gene diversity of the least-loaded mitochondrial genome class H_{LLC} and that of the second-least loaded class H_{LLC+1} , defined as $H_{LLC(+1)} = 1/K \sum_{i=1}^K (1 - \sum_{j=0}^{\infty} x_{ij}^2)$, where x_{ij} is the frequency of the allele with j point mutations at locus i . Stochastic drift in the model population operates at two major levels: within the eukaryotic population of size N and through random segregation of mitochondrial haplotypes at cell division. The mitochondrial population distributed over N eukaryotic cells can be further subdivided into classes according to the number of deleterious mutations m . In populations of finite size, the ge-

nome class containing the fewest mutations m_{LLC} will eventually be lost because of stochasticity, and, in the absence of back mutations and recombination, will not be recovered, causing the continuous accumulation of mutant alleles.

The analysis of mutation-accumulation profiles recapitulates the main conclusions of Charlesworth and Charlesworth (1997) and Takeuchi *et al.* (2014), who studied haploid populations and found that each advance of Muller's ratchet (*i.e.*, each stochastic loss of the least-mutated genome class) is followed by fixation of a single deleterious mutant allele within the whole population (Figure 2A). In a quasi-steady state—that is, between the stochastic mutation fixation events—the least-loaded class shows no diversity ($H_{LLC} = 0$) while the value of H_{LLC+1} remains close to 0.02 for the number of mitochondrial loci $K = 100$. This indicates that, at equilibrium, the second least-loaded class is well-approximated by K distinct genotypes of equal frequencies, each with one freely-segregating mutation per locus ($H_{LLC+1} = 1 - (1/K)^2 - (1 - 1/K)^2 \approx 0.02$). The moment

the least-mutated class is lost, the value of H_{LLC} becomes equal to the former H_{LLC+1} , but then rapidly returns to zero due to drift, indicating the fixation of a single mutant allele in the new least-loaded genome class. This is then followed by the drop of the new H_{LLC+1} back to its steady-state value, with one segregating mutation per locus (Figure 2B). Since all genome classes containing more than m_{LLC} mutations are derived from the least-mutated class, the fixation of a mutation within the fittest genome is followed by fixation in the second least-loaded class, and the whole population.

UPI mitigates mitochondrial mutation accumulation

We next systematically explored the effect of parameters controlling the strength of segregational drift and genetic mixing. For each set of parameter values, we tracked the population evolution for at least 10^6 generations, measuring the population mean of mitochondrial mutation load, the number of mutations in the least-mutated genome class, and the number of deleterious mutations fixed within the population.

UPI maintains highly efficient purifying selection in large part due to the segregational drift at each cell division, where each daughter cell inherits a random sample of the parental mitochondrial population. In other words, selection operates more efficiently through the recurrent creation of individual cells that are better or worse—with respect to deleterious mutations—than their parental cells. Previous studies have shown that mitochondrial mixing through biparental inheritance reduces variance in mutational load between lineages with freely-segregating mitochondria (Hadjivasilou *et al.* 2013; Radzvilavicius 2016; Christie and Beekman 2017a). This reduced variance resulted in weaker purifying selection at the level of the cell, and higher equilibrium mutation load in infinite populations. Here, we find that without recombination, even moderate levels of paternal leakage L severely increase the rate of mutation accumulation (Figure 2C and Figure 3), and can induce a dynamical regime in which the loss of the least-loaded genome class occurs several times before the corresponding number of mutations become fixed within the entire population (Figure 2D). Strictly UPI of mitochondria, on the other hand, is capable of maintaining negligible fixation rates of deleterious mutations (Figure 3). Increasing the size of the mitochondrial population M reduces the effect of stochastic drift between cell divisions and results in lower variance in mutational load. This hinders purifying selection at the level of the cell and promotes the accumulation of deleterious mutations. However, the effect of increasing M remains, on an absolute scale, very mild if leakage is completely absent (Figure 3).

The above results assume that segregation of mitochondrial genomes is random at cell division ($C = 1$). Because clustering of mitochondrial DNA molecules into linked groups such as nucleoids or organelles could curtail the variance-increasing capacity of segregational drift (Raap *et al.* 2012), we next investigated the effects of limited segregation by varying the size of the genome cluster C , and the rate of migration between clusters of the same cell F .

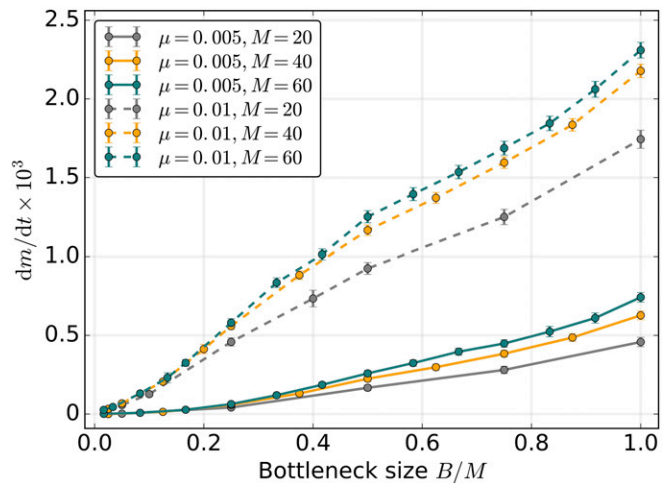


Figure 6 Mitochondrial bottlenecks can stall the irreversible mutation accumulation. Stochastic genome resampling through mitochondrial bottlenecking reduces the rate of mutation accumulation dm/dt in the absence of recombination among mitochondrial loci. Segregational drift is less efficient in generating mutational variance among cells, with larger mitochondrial populations, M , resulting in faster rates of mutation fixation. Parameter values are: $N = 500$, $C = 1$, $R = 0$, and $L = 5.0$. Here, $s = 0.02$ and $K = 100$. Error bars indicate the 95% C.I.s for the SEM ($\pm 1.96\sqrt{m_{\text{fix}}/t^2}$, where m_{fix} is the number of fixed mutations after t generations).

In the limit of $C = 1$, all M copies of the mitochondrial genome segregate independently, while with $C = M$, all M copies are transmitted together, each cell division producing a daughter cell identical to the parent. With genome clusters of permanent composition (no intercluster migration, $F = 0$), weakened segregation and less efficient purifying selection leads to fast accumulation of mutant alleles (Figure 4). However, our results show that even low rates of genome migration between clusters are capable of restoring the beneficial stochastic effect of segregational drift, sufficient to virtually eliminate the mutational ratchet-like genome deterioration (Figure 4).

Mitochondrial populations of eukaryotic cells undergo constant transformation that involves fusion into dynamic networks, allowing the exchange of proteins, lipids, and DNA, and fission, producing new organelles that differ in their protein and gene contents (Westermann 2010). This dynamic behavior has been suggested to serve as a mechanism of mitochondrial quality control through differential segregation of damaged mtDNA molecules and through mitochondrial autophagy (Twig *et al.* 2008; Kowald and Kirkwood 2011; Hoitzing *et al.* 2015). However, our results indicate that even without selective segregation or removal of damaged genomes, high efficacy of cell-level selection can be achieved through random redistribution of mitochondrial genomes to new individual organelles, slowing down the mutational erosion of asexual mitochondrial genomes.

Recombination slows down the ratchet, but does not reduce the equilibrium mutation load

An oft-cited advantage of meiotic sex in eukaryotes and horizontal gene transfer in prokaryotes is that recombination

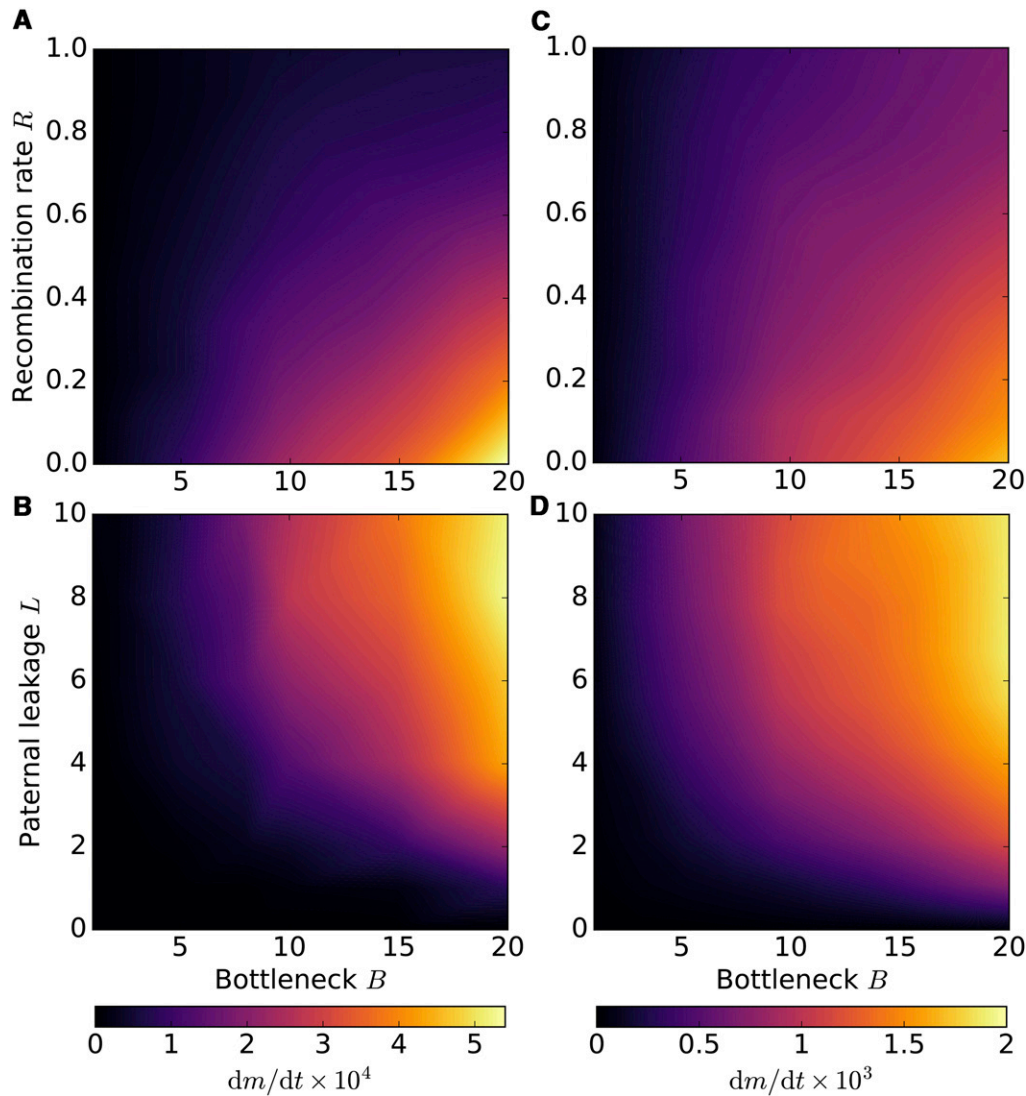


Figure 7 Mitochondrial bottlenecks slow down the rate of Muller’s ratchet. Asymmetric transmission and bottlenecking are two complementary strategies of increasing the cell-to-cell variance and ameliorating the mutational meltdown. Tight mitochondrial bottlenecks increase cell-to-cell variability in mutation load and the efficacy of purifying selection at the level of mitochondrial group, and slow down the irreversible accumulation of deleterious mutant alleles (A,C), countering the deleterious effects of paternal leakage (B,D). On the other hand, bottlenecks also increase clonality of mitochondrial genome within the cell, rendering homologous recombination less effective (A, C). $L = 1$ (A), $L = 5.0$ (C), $\mu = 0.005$, $N = 500$, $M = 20$, $R = 0$ in (B) and (D), and $C = 1$.

can restore the least-loaded nuclear genome class if the mutant allele is not fixed (Muller 1964; Felsenstein 1974; Takeuchi *et al.* 2014). To better understand the role of recombination in protecting organelle genomes from Muller’s ratchet in the more complex case of multi-copy mitochondrial genetics, we further investigated the combined effects of paternal leakage and recombination.

In mitochondrial populations of modern eukaryotes, the scope of recombination is limited by genetic homogeneity within the cell, which is itself a result of segregational drift with uniparental transmission. Under low rates of paternal leakage, homologous recombination remains ineffective as it operates among chromosomes of largely identical composition. For low levels of mitochondrial mixing L , the rate of mutation fixation therefore depends only weakly on recombination rate R (Figure 5, A and B). With increasing rates of paternal leakage L and low R , deleterious mutations accumulate faster due to reduced strength of selection at the level of the cell.

Recombination becomes a better defense against Muller’s ratchet when there is significant paternal leakage resulting in

heteroplasmy. Under these conditions, homologous gene transfer between mitochondrial genomes within the cell will have more opportunity to regenerate the extinct least-loaded genome classes, and so the relative effect of increasing R becomes more significant for high L . The results show that with strong paternal leakage, even relatively low levels of recombination can slow down the rate of mutation accumulation, restoring the dm/dt values characteristic of much lower levels of leakage or strict UPI (Figure 5A). Under high mutation rates, where Muller’s ratchet operates even under complete uniparental transmission ($L = 0$), high levels of paternal leakage combined with frequent gene transfer reduce the rate of mutation fixation below the levels observed under strict UPI (Figure 5B).

However, the rate of Muller’s ratchet is an incomplete measure of all the consequences of recombination and leakage. Although recombination slows down the ratchet if there is leakage, this cooccurs with reduced intercellular variance in mutation load (caused by leakage) and less effective purifying selection relative to strict UPI. We measured the net

effect as the mean mutational load in the steady state between stochastic mutation fixation events (*i.e.*, with a constant value of m_{LLC}) in larger populations of 10,000 cells (Figure 5, C and D). Our simulations show that paternal leakage always leads to higher steady-state mutant load, regardless of the intracellular gene transfer rate R (Figure 5, C and D). Recombination can generate mitotypes that carry fewer mutations, but cell-to-cell variance remains low due to paternal leakage. As a result, deleterious mutations are not segregated out of their cytoplasmic backgrounds and are not getting purged as efficiently as they are under UPI.

Mitochondrial bottleneck: an alternative mechanism redistributing mutational variance

The mitochondrial bottleneck is an alternative strategy of redistributing variance and regulating the strength of selection within and between groups of mitochondria, in many ways analogous to random genome segregation in uniparental transmission (Roze *et al.* 2005, Johnston *et al.* 2015). As suggested before (Bergstrom and Pritchard 1998; Christie and Beekman 2017a), we find that tight bottlenecks reduce the long-term genome deterioration due to Muller's ratchet, mitigating the mutational meltdown even with paternal leakage and in the absence of recombination (Figure 6). Bottlenecks generally have weaker effects under strict UPI, but become effective at reducing the rate of mutation fixation with high levels of paternal leakage (Figure 7A). Under relaxed bottlenecks, recombination is capable of reducing the ratchet rate down to negligible rates typical for UPI or strong bottlenecks. At the same time, tight bottlenecking enforces higher levels of clonality within the cell (except for new mutations and paternal leakage), in which case the mutation accumulation rates become highly insensitive to homologous recombination (Figure 7B).

Discussion

Unique features of mitochondrial population genetics evoke continuous debates over the mutational degradation of cytoplasmic organelle genomes due to the operation of Muller's ratchet. Mechanisms that play a role in redistributing mutational variance, such as uniparental transmission and mitochondrial bottlenecks, have variously been claimed to accelerate Muller's ratchet (Hoekstra 2000; Neiman and Taylor 2009; Dokianakis and Ladoukakis 2014; Greiner *et al.* 2015) or to slow it down (Bergstrom and Pritchard 1998; Roze *et al.* 2005; Christie and Beekman 2017a). Mitochondrial genome integrity is crucial for maintaining membrane potential and functional OXPHOS, the source of virtually all ATP of the complex eukaryotic cell. But mitochondria are predominantly transmitted uniparentally, limiting the scope and potential effects of homologous recombination.

One possible resolution of this paradox is the proposal that occasional mitochondrial recombination under biparental inheritance mitigates the mutational meltdown, and that paternal leakage could be episodically selected for (Dokianakis and Ladoukakis 2014; Greiner *et al.* 2015). These proposals

stem largely from early theoretical work in nuclear population genetics that established that even small levels of homologous recombination rescue finite populations from mutational meltdown (Felsenstein 1974; Charlesworth *et al.* 1993), one of the chief evolutionary benefits of meiotic sex in eukaryotes (Kondrashov 1993) and horizontal gene transfer in prokaryotes (Takeuchi *et al.* 2014).

Our study suggests that this straightforward analogy can be misleading because of important differences between mitochondrial and nuclear population genetics. Populations of mitochondrial genomes exist in a nested hierarchy of levels of selection (Rand 2001) and are subject to segregational drift due to random partitioning at cell division, mitochondrial DNA migration within mitochondrial networks, and, possibly, germline bottlenecks in mtDNA copy numbers. While population-level drift drives the operation of Muller's ratchet, there is also segregational drift at the level of the cell, which increases intercellular variance in mutational load, promotes host-level selection against deleterious mutations, and—as our present work shows—mitigates the accumulation of weakly deleterious mutations. With low variance within the cell, homologous recombination has little effect, and is capable of restoring extinct least-loaded genome classes only in the presence of paternal leakage. But paternal leakage itself increases the equilibrium mutational load independent of population size, even if recombination rates are high.

While our current study rejects the role of paternal leakage in mitochondrial quality control, there is nevertheless a strong possibility that paternal leakage is not just a sporadic breakdown of UPI, but is adaptive in its own right. An extraordinary array of nonconserved mechanisms that enforce UPI (Sato and Sato 2013) indicate multiple origins, shifting selection pressures, and, quite possibly, reversals to partially biparental transmission of mitochondria. However, rather than being driven by the putative benefits of episodic recombination countering genome deterioration, we believe that the repeated evolution of paternal leakage is better explained by direct sex-specific selective pressures (Wade and McCauley 2005; Kuijper *et al.* 2015). Note that our model examines the consequences of different rates of recombination and leakage, but does not consider how selection acts on the entity that controls these rates (*e.g.*, nuclear genes that control the rate of paternal leakage), and this will be addressed in future work. Sexual conflict over the control of mitochondrial inheritance provides a particularly appealing explanation for the repeated evolution of mechanisms that restrict mitochondrial transmission, frequent heteroplasmy, and the prevalence of paternal leakage (Radzvilavicius 2017). Female nuclear alleles, due to their strong linkage to the cytoplasm, favor strict UPI, whereas male nuclear alleles, with a much weaker statistical linkage to the mitochondrial contents of the cell, would favor paternal leakage as a short-term strategy to mask detrimental mitochondrial mutations (Radzvilavicius 2016).

Endosymbiosis at the dawn of eukaryote evolution produced a cell with two genomes of distinct origin, characterized by divergent modes of inheritance and evolution. At this point,

reduced selection at the lower level of individuality, e.g., selection for fittest proto-mitochondria within the cell, must have jeopardized their genomic stability due to increased deleterious mutation load or the spread of selfish genetic elements. It could be a universal feature of evolutionary transitions in individuality that mechanisms maintaining genome quality across levels of selection arise as part of the transition and become seamlessly integrated within organism life cycles and developmental programs (Buss 1987; Bennett and Moran 2015). For the nuclear genome of the eukaryotic cell, meiotic sex with reciprocal recombination provides one such mechanism, arising early in eukaryote evolution and, chances are, responsible for the success of the prokaryote–eukaryote transition.

But the unique population genetics of mitochondrial genes require an alternative strategy, and mechanisms increasing cell-to-cell variability in mitochondrial mutation load provide the solution. Mitochondrial fusion–fission cycles reduce linkage between mitochondrial genome copies, allowing for more efficient segregation at cell division. Stochastic genome resampling through mitochondrial bottlenecks redistributes mutational variance, increasing the efficacy of purifying selection at the level of the cell. Likewise, stochastic partitioning of mitochondria in uniparental transmission increases mutational variance, efficiently purging genomes that harbor excess deleterious mutations and rescuing mitochondrial genes from Muller’s ratchet in small populations, without the need for homologous recombination. Meiotic sex—a universal eukaryotic trait—is central to the quality control of the nuclear genome, whereas two sexes or mating types are generally required for the evolution of asymmetric organelle inheritance, and could ultimately be responsible for the long-term stability of the mitochondrial genome.

Acknowledgments

A.L.R., J.R.C., and H.K. are funded by grants from the Academy of Finland (Centre of Excellence of Biological Interactions) and the Swiss National Science Foundation.

Literature Cited

- Bennett, G. M., and N. A. Moran, 2015 Heritable symbiosis: the advantages and perils of an evolutionary rabbit hole. *Proc. Natl. Acad. Sci. USA* 112: 10169–10176.
- Bergstrom, C. T., and J. Pritchard, 1998 Germline bottlenecks and the evolutionary maintenance of mitochondrial genomes. *Genetics* 149: 2135–2146.
- Boore, J. L., 1999 Animal mitochondrial genomes. *Nucleic Acids Res.* 27: 1767–1780.
- Burger, G., M. W. Gray, and B. F. Lang, 2003 Mitochondrial genomes: anything goes. *Trends Genet.* 19: 709–716.
- Buss, L. W., 1987 *The Evolution of Individuality*. Princeton University Press, Princeton, NJ.
- Cao, L., H. Shitara, T. Horii, Y. Nagao, H. Imai *et al.*, 2007 The mitochondrial bottleneck occurs without reduction of mtDNA content in female mouse germ cells. *Nat. Genet.* 39: 386–390.
- Cao, L., H. Shitara, M. Sugimoto, J. I. Hayashi, K. Abe *et al.*, 2009 New evidence confirms that the mitochondrial bottleneck is generated without reduction of mitochondrial DNA content in early primordial germ cells of mice. *PLoS Genet.* 5: e1000756.
- Charlesworth, B., and D. Charlesworth, 1997 Rapid fixation of deleterious alleles can be caused by Muller’s ratchet. *Genet. Res.* 70: 63–73.
- Charlesworth, D., M. T. Morgan, and B. Charlesworth, 1993 Mutation accumulation in finite outbreeding and inbreeding populations. *Genet. Res.* 61: 39–56.
- Christie, J. R., and M. Beekman, 2017a Uniparental inheritance promotes adaptive evolution in cytoplasmic genomes. *Mol. Biol. Evol.* 34: 677–691.
- Christie, J. R., and M. Beekman, 2017b Selective sweeps of mitochondrial DNA can drive the evolution of uniparental inheritance. *Evolution* 71: 2090–2099.
- Christie, J. R., T. M. Schaerf, and M. Beekman, 2015 Selection against heteroplasmy explains the evolution of uniparental inheritance of mitochondria. *PLoS Genet.* 11: e1005112.
- Cooper, B. S., C. R. Burrus, C. Ji, M. W. Hahn, and K. L. Montooth, 2015 Similar efficacies of selection shape mitochondrial and nuclear genes in both *Drosophila melanogaster* and *Homo sapiens*. *G3 (Bethesda)* 5: 2165–2176.
- Dokianakis, E., and E. D. Ladoukakis, 2014 Different degree of paternal mtDNA leakage between male and female progeny in interspecific *Drosophila* crosses. *Ecol. Evol.* 4: 2633–2641.
- Felsenstein, J., 1974 The evolutionary advantage of recombination. *Genetics* 78: 737–756.
- Greiner, S., J. Sobanski, and R. Bock, 2015 Why are most organelle genomes transmitted maternally? *BioEssays* 37: 80–94.
- Hadjivasiliou, Z., A. Pomiankowski, R. M. Seymour, and N. Lane, 2012 Selection for mitonuclear co-adaptation could favour the evolution of two sexes. *Proc. Biol. Sci.* 279: 1865–1872.
- Hadjivasiliou, Z., N. Lane, R. M. Seymour, and A. Pomiankowski, 2013 Dynamics of mitochondrial inheritance in the evolution of binary mating types and two sexes. *Proc. Biol. Sci.* 280: 20131920.
- Hagström, E., C. Freyer, B. J. Battersby, J. B. Stewart, and N. G. Larsson, 2014 No recombination of mtDNA after heteroplasmy for 50 generations in the mouse maternal germline. *Nucleic Acids Res.* 42: 1111–1116.
- Haig, D., 2016 Intracellular evolution of mitochondrial DNA (mtDNA) and the tragedy of the cytoplasmic commons. *BioEssays* 38: 549–555.
- Havird, J. C., M. D. Hall, and D. K. Dowling, 2015 The evolution of sex: a new hypothesis based on mitochondrial mutational erosion. *BioEssays* 37: 951–958.
- Hoekstra, R. F., 2000 Evolutionary origin and consequences of uniparental mitochondrial inheritance. *Hum. Reprod.* 15: 102–111.
- Hoitzing, H., I. G. Johnston, and N. S. Jones, 2015 What is the function of mitochondrial networks? A theoretical assessment of hypotheses and proposal for future research. *BioEssays* 37: 687–700.
- Hurst, L. D., and W. D. Hamilton, 1992 Cytoplasmic fusion and the nature of sexes. *Proc. Biol. Sci.* 247: 189–194.
- Itoh, T., W. Martin, and M. Nei, 2002 Acceleration of genomic evolution caused by enhanced mutation rate in endocellular symbionts. *Proc. Natl. Acad. Sci. USA* 99: 12944–12948.
- Jacobs, H. T., S. K. Lehtinen, and J. N. Spelbrink, 2000 No sex please, we’re mitochondria: a hypothesis on the somatic unit of inheritance of mammalian mtDNA. *BioEssays* 22: 564–572.
- Johnston, I. G., J. P. Burgstaller, V. Havlicek, T. Kolbe, T. Rüllicke *et al.*, 2015 Stochastic modelling, Bayesian inference, and new in vivo measurements elucidate the debated mtDNA bottleneck mechanism. *Elife* 4: e07464.
- Kondrashov, A. S., 1993 Classification of hypotheses on the advantage of amphimixis. *J. Hered.* 84: 372–387.
- Kondrashov, A. S., 1994 Muller’s ratchet under epistatic selection. *Genetics* 136: 1469–1473.

- Kowald, A., and T. B. Kirkwood, 2011 Evolution of the mitochondrial fusion–fission cycle and its role in aging. *Proc. Natl. Acad. Sci. USA* 108: 10237–10242.
- Kuijper, B., N. Lane, and A. Pomiankowski, 2015 Can paternal leakage maintain sexually antagonistic polymorphism in the cytoplasm? *J. Evol. Biol.* 28: 468–480.
- Lynch, M., 1996 Mutation accumulation in transfer RNAs: molecular evidence for Muller's ratchet in mitochondrial genomes. *Mol. Biol. Evol.* 13: 209–220.
- Lynch, M., and J. L. Blanchard, 1998 Deleterious mutation accumulation in organelle genomes. *Genetica* 102: 29–39.
- Lynch, M., B. Koskella, and S. Schaack, 2006 Mutation pressure and the evolution of organelle genomic architecture. *Science* 311: 1727–1730.
- Martin, W., and R. G. Herrmann, 1998 Gene transfer from organelles to the nucleus: how much, what happens, and why? *Plant Physiol.* 118: 9–17.
- Martin, W. F., S. Garg, and V. Zimorski, 2015 Endosymbiotic theories for eukaryote origin. *Phil. Trans. R. Soc. B* 370: 20140330.
- Muller, H. J., 1964 The relation of recombination to mutational advance. *Mutat. Res.* 106: 2–9.
- Neiman, M., and D. R. Taylor, 2009 The causes of mutation accumulation in mitochondrial genomes. *Proc. Biol. Sci.* 276: 1201.
- Popadin, K. Y., S. I. Nikolaev, R. Junier, M. Baranova, and S. E. Antonarakis, 2013 Purifying selection in mammalian mitochondrial protein-coding genes is highly effective and congruent with evolution of nuclear genes. *Mol. Biol. Evol.* 30: 347–355.
- Raap, A. K., R. S. J. Tafrechi, F. M. van de Rijke, A. Pyle, C. Wählby *et al.*, 2012 Non-random mtDNA segregation patterns indicate a metastable heteroplasmic segregation unit in m.3243A>G cybrid cells. *PLoS One* 7: e52080.
- Race, H. L., R. G. Herrmann, and W. Martin, 1999 Why have organelles retained genomes? *Trends Genet.* 15: 364–370.
- Radzvilavicius, A. L., 2016 Evolutionary dynamics of cytoplasmic segregation and fusion: mitochondrial mixing facilitated the evolution of sex at the origin of eukaryotes. *J. Theor. Biol.* 404: 160–168.
- Radzvilavicius, A. L., 2017 Evolutionary dynamics of mitochondrial mutations in the origin and development of eukaryotic sex. Ph.D. Thesis, University College London, London.
- Radzvilavicius, A. L., Z. Hadjivasiliou, A. Pomiankowski, and N. Lane, 2016 Selection for mitochondrial quality drives evolution of the germline. *PLoS Biol.* 14: e2000410.
- Rand, D. M., 2001 The units of selection on mitochondrial DNA. *Annu. Rev. Ecol. Syst.* 32: 415–448.
- Rand, D. M., 2008 Mitigating mutational meltdown in mammalian mitochondria. *PLoS Biol.* 6: e35.
- Rosignol, R., B. Faustin, C. Rocher, M. Malgat, J. P. Mazat *et al.*, 2003 Mitochondrial threshold effects. *Biochem. J.* 370: 751–762.
- Roze, D., F. Rousset, and Y. Michalakis, 2005 Germline bottlenecks, biparental inheritance and selection on mitochondrial variants. *Genetics* 170: 1385–1399.
- Sato, M., and K. Sato, 2013 Maternal inheritance of mitochondrial DNA by diverse mechanisms to eliminate paternal mitochondrial DNA. *Biochim. Biophys. Acta Molec. Cell Res.* 1833: 1979–1984.
- Satoh, M., and T. Kuroiwa, 1991 Organization of multiple nucleoids and DNA molecules in mitochondria of a human cell. *Exp. Cell Res.* 196: 137–140.
- Stewart, J. B., C. Freyer, J. L. Elson, A. Wredenberg, Z. Cansu *et al.*, 2008 Strong purifying selection in transmission of mammalian mitochondrial DNA. *PLoS Biol.* 6: e10.
- Takeuchi, N., K. Kaneko, and E. V. Koonin, 2014 Horizontal gene transfer can rescue prokaryotes from Muller's ratchet: benefit of DNA from dead cells and population subdivision. *G3 (Bethesda)* 4: 325–339.
- Taylor, R. W., and D. M. Turnbull, 2005 Mitochondrial DNA mutations in human disease. *Nat. Rev. Genet.* 6: 389–402.
- Timmis, J. N., M. A. Ayliffe, C. Y. Huang, and W. Martin, 2004 Endosymbiotic gene transfer: organelle genomes forge eukaryotic chromosomes. *Nat. Rev. Genet.* 5: 123–135.
- Twig, G., B. Hyde, and O. S. Shirihai, 2008 Mitochondrial fusion, fission and autophagy as a quality control axis: the bioenergetic view. *Biochim. Biophys. Acta Bioenerg.* 1777: 1092–1097.
- Wade, M. J., and D. E. McCauley, 2005 Paternal leakage sustains the cytoplasmic polymorphism underlying gynodioecy but remains invisable by nuclear restorers. *Am. Nat.* 166: 592–602.
- Wai, T., D. Teoli, and E. A. Shoubridge, 2008 The mitochondrial DNA genetic bottleneck results from replication of a subpopulation of genomes. *Nat. Genet.* 40: 1484–1488.
- Wallace, D. C., 2010 Mitochondrial DNA mutations in disease and aging. *Environ. Mol. Mutagen.* 51: 440–450.
- Westermann, B., 2010 Mitochondrial fusion and fission in cell life and death. *Nat. Rev. Mol. Cell Biol.* 11: 872–884.
- Wolff, J. N., E. D. Ladoukakis, J. A. Enríquez, and D. K. Dowling, 2014 Mitonuclear interactions: evolutionary consequences over multiple biological scales. *Phil. Trans. R. Soc. B* 369: 20130443.
- Zhang, F., and R. E. Broughton, 2013 Mitochondrial–nuclear interactions: compensatory evolution or variable functional constraint among vertebrate oxidative phosphorylation genes? *Genome Biol. Evol.* 5: 1781–1791.

Communicating editor: G. Coop