

# Intercalated degrees, learning styles, and career preferences: prospective longitudinal study of UK medical students

I C McManus, P Richards, B C Winder

Research Centre for Medical Education, Centre for Health Informatics and Multiprofessional Education, Royal Free and University College Medical School, University College London, London N19 3UA

I C McManus  
*professor of psychology and medical education*

B C Winder  
*research fellow*

Hughes Hall, Cambridge CB1 2EW

P Richards  
*president*

Correspondence to I C McManus  
i.mcmanus@ucl.ac.uk

BMJ 1999;319:542-6

## Abstract

**Objectives** To assess the effects of taking an intercalated degree (BSc) on the study habits and learning styles of medical students and on their interest in a career in medical research.

**Design** Longitudinal questionnaire study of medical students at application to medical school and in their final year.

**Setting** All UK medical schools.

**Participants** 6901 medical school applicants for admission in 1991 were studied in the autumn of 1990. 3333 entered medical school in 1991 or 1992, and 2695 who were due to qualify in 1996 or 1997 were studied 3 months before the end of their clinical course. Response rates were 92% for applicants and 56% for final year students.

**Main outcome measures** Study habits (surface, deep, and strategic learning style) and interest in different medical careers, including medical research. Identical questions were used at time of application and in final year.

**Results** Students who had taken an intercalated degree had higher deep and strategic learning scores than at application to medical school. Those with highest degree classes had higher strategic and deep learning scores and lower surface learning scores. Students taking intercalated degrees showed greater interest in careers in medical research and laboratory medicine and less interest in general practice than their peers. The effects of the course on interest in medical research and learning styles were independent. The effect of the intercalated degree was greatest in schools where relatively few students took intercalated degrees.

**Conclusions** Intercalated degrees result in a greater interest in research careers and higher deep and strategic learning scores. However, the effects are much reduced in schools where most students intercalate a degree. Introduction of intercalated degrees for all medical students without sufficient resources may not therefore achieve its expected effects.

## Introduction

About one third of medical students in the United Kingdom add an additional year to the basic five year undergraduate course and intercalate a degree in a medical science (generically a BSc). In some schools intercalated degrees are an integral part of a six year course. Intercalated degrees are controversial. Most recently, the Medical Research Council, in a "senseless sacrifice,"<sup>1</sup> withdrew its funding for students<sup>2-3</sup> despite a 1986 statement that: "most members of Council considered that intercalated awards were of the highest value in introducing future clinicians to research, and providing a cadre of graduates who were likely to

become attracted to, and excel in, a career in academic medicine."<sup>4</sup>

Although many medical teachers believe that intercalated degrees are beneficial, genuine doubt remains about its effect on attitudes and careers. Previous studies have found that medical academics tend to have intercalated a degree,<sup>5-6</sup> and intercalating students may<sup>7</sup> or may not<sup>4</sup> perform better in final examinations. The problem of interpretation was emphasised by the Committee of Vice-Chancellors and Principals' report into clinical academic careers: "the data ... do not (cannot) demonstrate that intercalated degrees cause students to take up academic careers ... it may be that those that are interested in academic research are those that seek to do the intercalated degree."<sup>8</sup>

Although the literature has emphasised a research career as a principal outcome,<sup>5</sup> intercalated degrees may have broader effects. Modern medicine emphasises self directed learning and critical evaluation, skills which may be acquired during an intercalated degree and are relevant to all doctors. Learning styles may therefore also be a useful outcome measure, emphasising not what has been learned but how and why learning is taking place.<sup>9-11</sup> This study assesses the effect of an intercalated degree on learning styles and career preferences in a large prospective cohort of UK medical students and examines the effect of the degree in different medical schools.

## Participants and methods

In a prospective, longitudinal study of medical student selection and training we studied 6901 applicants in 1990 for admission in 1991 to five UK medical schools.<sup>12</sup> These applicants represented 71% of all applicants to UK medical schools in that year. We sent questionnaires to applicants with European addresses and received replies from 92% (5361/5845). Applicants were informed that participation was not compulsory and was independent of the selection process.

Of the cohort, 3333 were admitted to any of the UK medical schools to which they had applied (that is, not only the five schools in the selection survey), 2961 in 1991 and 372 in 1992. In 1995 and 1996 all UK medical schools provided information on the progress of the 3333 entrants. A total of 3048 students had entered clinical courses, and 2695 were due to qualify in 1996 or 1997 and formed the subjects for the present study. The students were sent questionnaires about 3 months before final examinations (in 1996 or 1997). Response rate was 56% (1495/2695).

Learning styles (study habits) were assessed by an 18 item version of Biggs's study process questionnaire,<sup>11 13-15</sup> which has surface, deep, and strategic scales (box).<sup>10</sup> Reliability coefficients ( $\alpha$ ) were 0.534, 0.721, and 0.637 in applicants and 0.591, 0.734, and 0.727 in final year students.

### Summary of differences in motivation and study process of surface, deep, and strategic approaches to study

Style	Motivation	Process
Surface	Completion of the course Fear of failure	Rote learning of facts and ideas Focusing on task components in isolation Little real interest in content
Deep	Interest in the subject Vocational relevance Personal understanding	Relate ideas to evidence Integration of material across courses Identifying general principles
Strategic	Achieving high grades Competing with others To be successful	Use techniques that achieve highest grades Level of understanding patchy and variable

Career preferences were assessed by a questionnaire rating 27 specialty areas on a five point scale from "definite intention to go into this" through to "definite intention not to go into this," scored 5 to 1.<sup>16</sup> Previous factor analyses suggested seven factors (see table 2), for which mean scores were calculated. The item on medical research was also analysed separately. Academic achievement was coded as average A level grade (A = 5; B = 4; C = 3; D = 2; E = 1; O/F = 0) and number of A levels.

The proportion of students taking intercalated degrees differs between medical schools (a "compositional variable"<sup>17</sup>). We used multilevel modelling to assess the effect of this factor using final year strategic learning score as the response variable, allowing random variation at student and medical school level, and fixed effects of strategic learning at application, A level attainment, the taking of a BSc, the proportion of students at a school taking a BSc, and the interaction of the last two measures.

We used SPSS for windows version 8.0 for conventional statistical analysis and MLN for multilevel modelling.<sup>17 18</sup> Missing values, which represented about 1% of the questionnaire responses, were replaced by means when appropriate. Denominators are not always equal because of missing values. Significance tests from multiple regression and multilevel modelling are reported as *z* statistics (estimate/standard error).

## Results

Intercalated degrees were taken by 904/2695 (33.5%) of the students. Degree classes were known for 795 students: 166 (20.9%) gained a first, 532 (66.9%) a 2.1, 86 (10.8%) a 2.2, and 11 (1.4%) a third, pass degree, or fail.

### Learning styles

Students who subsequently took intercalated degrees had significantly lower surface learning scores at application to medical school and significantly higher A level grades and number of A levels than those who did not (table 1). Final year students who had taken intercalated degrees had higher deep and strategic learning scores (table 1). After scores at application were partialled out, final year students who had taken an intercalated degree had higher deep ( $z = 3.73$ ,  $P < 0.001$ ) and strategic ( $z = 4.56$ ;  $P < 0.001$ ) scores (but not lower surface scores ( $z = 0.546$ ,  $P = 0.585$ )) than those who had not taken an intercalated degree.

Significance remained similar after A level results were taken into account.

Surface, deep, and strategic learning showed linear trends on class of intercalated degree attained ( $z = -2.67$ , 2.21, and 4.51;  $P = 0.008$ , 0.027, and  $< 0.001$  respectively) after scores at application were partialled out (figure 1).

The average proportion of students taking an intercalated degree at a medical school was 36% ( $n = 28$ ; SD 29%; median 26%; interquartile range 12-51%; range 2-100%). The interaction between the effect of taking a BSc on strategic learning and the proportion of students taking a BSc was significant ( $z = 2.47$ ,  $P = 0.014$ ; fig 2), the effect of the BSc being greater in schools where fewer students took it. Regression on proportion of students intercalating a degree was significantly negative in those taking a BSc ( $z = 2.57$ ,  $P = 0.010$ ) but not significant in those not taking a BSc ( $z = 0.79$ , NS).

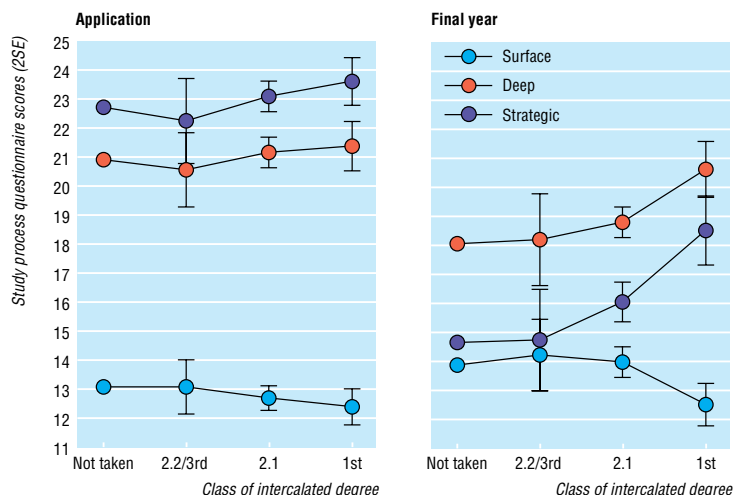
### Career preferences

At application to medical school, students who subsequently took an intercalated degree had a higher preference for laboratory medicine and a lower preference for general practice (table 2) and were more

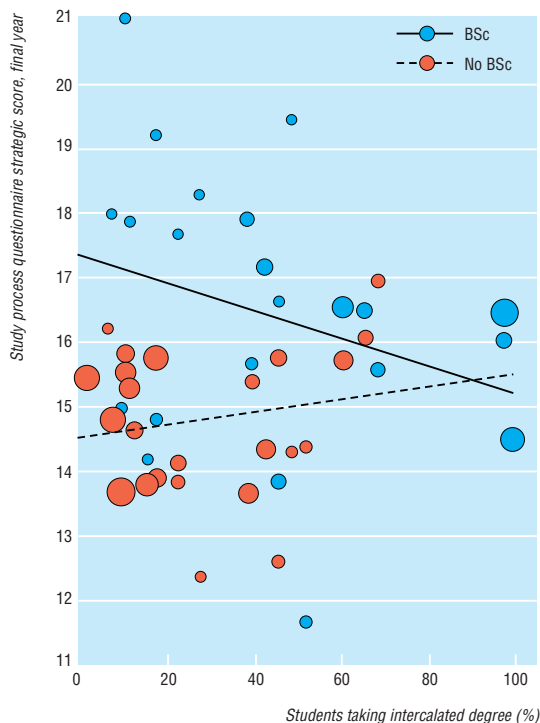
**Table 1** Study habits at time of application and in final year and A level results for students taking or not taking an intercalated degree

	BSc		No BSc		Significance (BSc v No BSc)*
	No of students	Mean (SD)	No of students	Mean (SD)	
Surface learning score:					
Application	839	12.84 (3.49)	1603	13.33 (3.88)	$t = -3.04$ , 2440 df, $P = 0.0002$
Final year	434	13.78 (3.69)	1012	14.07 (3.81)	$t = -1.32$ , 1444 df, $P = 0.187$
Deep learning score:					
Application	839	21.29 (4.16)	1603	21.10 (4.29)	$t = 1.02$ , 2440 df, $P = 0.307$
Final year	434	19.17 (4.32)	1012	18.17 (4.40)	$t = 4.00$ , 1444 df, $P < 0.001$
Strategic learning score:					
Application	839	23.10 (4.12)	1603	22.75 (4.21)	$t = 1.93$ , 2440 df, $P = 0.053$
Final year	434	16.26 (5.11)	1012	14.81 (4.93)	$t = 5.10$ , 1444 df, $P < 0.001$
Mean A level grade	890	4.36 (0.641)	1716	4.07 (0.705)	$t = 9.51$ , 2604 df, $P < 0.001$
No of A levels	904	3.43 (0.948)	1789	3.34 (1.15)	$t = 2.05$ , 2691 df, $P = 0.041$

\*Unpaired *t* tests.



**Fig 1** Surface, deep, and strategic learning scores at application and in final year in students who did and did not take intercalated degree and according to degree class. Note: absolute differences in separate scores should be considered arbitrary



**Fig 2** Average final year strategic learning score for medical students who did and did not take an intercalated in relation to percentage of students in each school taking degree. Average number of students at a school who were in our study and taking a BSc was 16.4 (SD 17.6; median 9; interquartile range 6-24; range 1-70), and number not taking a BSc was 35.6 (SD 21.2; median 36; interquartile range 18-49; range 1-79). Regression lines were calculated with all data points, but points are plotted only for schools with at least four students in that category. Size of points is proportional to number of students at school

interested in medical research (tables 2 and 3). Final year medical students who had taken an intercalated degree had higher preferences for laboratory medicine and medical research and lower preferences for general practice, the effect remaining significant after scores at entry and A levels were partialled out. Students gaining

higher degree classes had a greater interest in medical research ( $z=7.98, P<0.001$ ) and laboratory medicine ( $z=7.31, P<0.001$ ) and a decreased interest in general practice ( $z=-3.32, P=0.001$ ) after scores at application were partialled out.

Analysis of difference between medical schools was restricted to interest in medical research. Multilevel modelling showed that after research career at application to medical school, mean A level grade, and number of A levels were partialled out there was a significant interaction between the effect of taking an intercalated degree and the proportion of students in each medical school taking an intercalated degree (fig 3;  $z=2.60, P=0.010$ ); a significant negative association was seen in those taking an intercalated degree ( $z=-3.65, P<0.001$ ) and no association in those not taking a degree ( $z=0.27, NS$ ).

**Relation between study habits and career preferences**

Since taking an intercalated BSc affects both study habits and career preferences, it is important to ask if the effects are independent or mediated.<sup>19</sup> For individual students, regression of strategic learning on taking an intercalated degree was significant after strategic learning at application and interest in medical research at application and final year were partialled out ( $z=3.95, P<0.001$ ); similarly, an intercalated degree was significantly related to interest in medical research, after interest in medical research at application and strategic learning at application and final year were partialled out ( $z=7.20, P<0.001$ ). At medical school level, the proportion of students taking a BSc remained significant after covarying the other variable (effect on strategic learning,  $z=2.12, P=0.034$ ; effect on career in medical research,  $z=3.34, P<0.0001$ ). Intercalated degrees therefore have independent effects on study habits and career preferences at student and medical school level.

**Discussion**

This study provides evidence that students taking an intercalated degree are more interested in medical research and also favour deep and strategic learning. The effect on learning has broad implications for medical education since these learning techniques could benefit all doctors. The benefits of the intercalated degree were present 3 years after it had been taken and might be expected to last much longer. Because our study is longitudinal, the hypothesis that the effects of an intercalated degree are due to self selection<sup>8</sup> can largely be discounted. Although detailed results cannot be presented here, there was no evidence that final year respondents were substantively different from non-respondents based on scores at application. This was also found in our previous studies.<sup>20</sup>

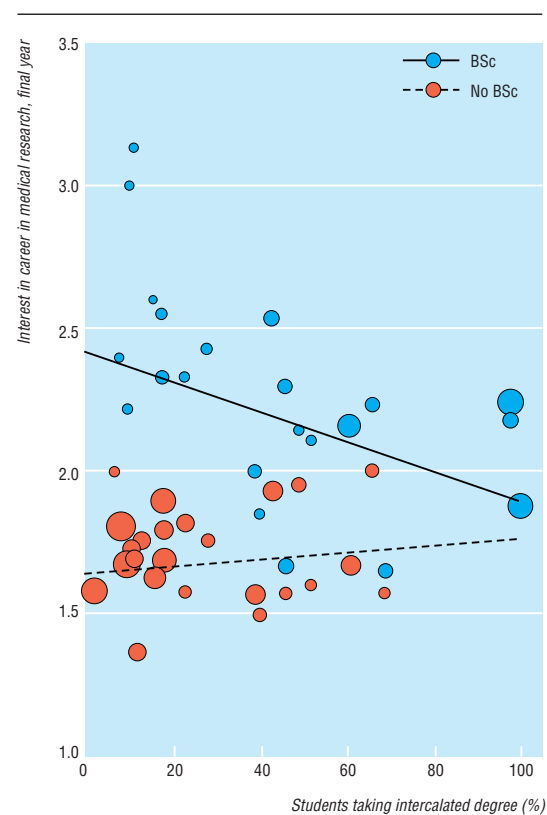
**Differences between medical schools**

A simple reading of our overall data might suggest that all medical students should take an intercalated degree. This is already the case at Oxford, Cambridge, and Nottingham and is being implemented at Imperial College School of Medicine and Royal Free and University College Medical School. Our large sample size, coupled with multilevel modelling, allowed

**Table 2** Mean (SD) scores for career preferences at time of application to medical school and in final year for students who did and did not take intercalated degree. Score of 5 indicates definite intention to go into speciality and 1 definite intention not to go into speciality

Scale (component specialities)	Application			Final year		
	BSc (n=739)	No BSc (n=1401)	Significance	BSc (n=429)	No BSc (n=1004)	Significance
Continuing hospital care (medicine in hospital (cardiology, neurology, etc); infectious diseases; obstetrics and gynaecology; genitourinary medicine; geriatrics)	2.89 (0.52)	2.91 (0.52)	$t=-0.56$ , 2138 df, $P=0.576$	2.53 (0.57)	2.52 (0.58)	$t=0.33$ , 1431 df, $P=0.744$
Non-continuing hospital care (anaesthetics; ophthalmology; dermatology; radiology/radiotherapy)	2.43 (0.48)	2.42 (0.49)	$t=0.55$ , 2138 df, $P=0.586$	2.22 (0.57)	2.22 (0.56)	$t=-0.72$ , 1431 df, $P=0.942$
Surgery (neurosurgery, thoracic surgery, etc; traumatic and orthopaedic surgery; ear, nose, and throat)	3.20 (0.67)	3.17 (0.72)	$t=1.25$ , 2138 df, $P=0.213$	2.31 (1.00)	2.30 (1.01)	$t=0.18$ , 1431 df, $P=0.858$
Laboratory medicine (microbiology, chemical pathology, haematology; pathology; medical research; basic medical sciences; pharmaceutical industry*)	2.49 (0.69)	2.41 (0.68)	$t=2.58$ , 2138 df, $P=0.010$	1.77 (0.61)	1.52 (0.49)	$t=8.25$ , 1431 df, $P<0.001$
Administrative medicine (medical administration; public health*; pharmaceutical industry*; armed forces; forensic medicine; industrial medicine)	2.07 (0.57)	2.10 (0.55)	$t=-1.48$ , 2138 df, $P=0.139$	1.57 (0.48)	1.55 (0.46)	$t=0.78$ , 1431 df, $P=0.435$
General practice (single handed; small partnership; large group or health centre; public health*)	2.65 (0.83)	2.78 (0.85)	$t=-3.52$ , 2138 df, $P<0.001$	2.27 (0.83)	2.46 (0.88)	$t=-3.83$ , 1431 df, $P<0.001$
Psychiatry	2.88 (1.05)	2.89 (1.02)	$t=-0.23$ , 2138 df, $P=0.815$	2.31 (1.12)	2.32 (1.12)	$t=-0.14$ , 1431 df, $P=0.887$
Medical research	2.73 (1.08)	2.60 (1.05)	$t=2.67$ , 2138 df, $P=0.008$	2.18 (1.10)	1.71 (0.88)	$t=8.65$ , 1431 df, $P<0.001$

\*Item included in two scales and therefore weighted by a half.



**Fig 3** Average final year score for interest in a career in medical research for students who did and did not take an intercalated degree in relation to percentage of students in each school taking degree. Regression lines were calculated with all data points, but points are plotted only for schools with at least four students in that category. Size of points is proportional to number of students at school

comparison of medical schools. As more students in a medical school take an intercalated degree the benefit decreases. The mechanism of this effect cannot be elucidated from our data, but a possible explanation is dilution of resources: as proportionately more students take an intercalated degree there are fewer resources

for each student, each member of staff supervising more students. If this hypothesis is correct, proper resourcing of intercalated degrees is necessary for them to be effective.

#### Direction of effects

It might be argued that our study does not show positive effects of the intercalated degree, but rather that the degree mitigates the negative effects of the rest of the course, preventing a fall in deep and strategic learning and decreased interest in research. That is possible. The effects of the other five years of the course are, however, more difficult to study, since all students take all components of it, and the effects are heavily confounded by maturational and age related changes.<sup>21</sup>

Most of the students in our study were taking a traditional curriculum, but many medical schools are now introducing curriculums containing problem based learning.<sup>22</sup> These may themselves increase deep and strategic learning.<sup>23-26</sup> Nevertheless, the intercalated degree remains an option in most new curriculums. Our study provides a baseline from which to determine whether new curriculums will increase deep and strategic learning in their own right.

#### Evidence based medical education

Although intercalated degrees have been encouraged and funded for many decades, this is the first prospective study assessing their impact. If medical education is

**Table 3** Attitude towards medical research as a career at time of application to medical school and in final year in relation to intercalated degree being taken or not. Values are numbers (percentages) of students

	Application*		Final year†	
	BSc (n=807)	No BSc (n=1531)	BSc (n=426)	No BSc (n=1000)
Definite intention to go into	28 (4)	47 (3)	12 (3)	5 (1)
Very attractive	198 (25)	292 (19)	44 (10)	37 (4)
Moderately attractive	230 (29)	478 (31)	100 (23)	140 (14)
Not very attractive	243 (30)	478 (31)	125 (29)	299 (30)
Definite intention not to go into	108 (13)	236 (15)	145 (34)	519 (52)

\* $U=581\ 024$ ,  $z=-2.45$ ,  $P=0.014$  for difference between BSc and no BSc (Mann-Whitney U test).

† $U=1\ 753\ 770$ ,  $z=-7.81$ ,  $P<0.001$  for difference between BSc and no BSc (Mann-Whitney U test).

**Key messages**

- Although intercalated degrees are well established, little is known about their effect on medical students
- In this longitudinal study final year students who had taken intercalated degree were more interested in medical research, and had higher deep and strategic learning style scores than other students
- The effects of the intercalated degree were dose dependent, being greatest in those gaining a first class degree
- The effects of the intercalated degree were greatest in medical schools where a relatively small proportion of medical students took the degree.
- Differences between medical schools are most easily explained by resource dilution

to be based on evidence rather than mere custom, funding must be found for similar systematic studies of new curriculums.

We thank Ms Agni Keeling for data entry, the deans and academic registrars of UK medical schools for help in following up students, and the students for completing the lengthy questionnaires.

**Contributors:** The study was designed by ICM and PR. ICM and BCW were responsible for data collection and analysis. ICM wrote the first draft of the manuscript and all authors contributed to revising the manuscript. ICM is the study guarantor.

**Funding:** The Department of Health funded the study of final year students, and the Leverhulme Trust, the Nuffield Foundation, and the Department of Health funded the study of student selection.

**Competing interests:** None declared.

- 1 Smith R. A senseless sacrifice: the fate of intercalated degrees. *BMJ* 1986;292:1619-20.
- 2 Tamber PS. MRC withdraws intercalated degree funds. *BMJ* 1996;312:1117-8.

- 3 Attwell D, Boyd R. Withdrawal of medical research council funding for intercalated BSc students. *Lancet* 1996;348:198.
- 4 Tait N, Marshall T. Is an intercalated BSc degree associated with higher marks in examinations during the clinical years? *Med Educ* 1995;29:216-9.
- 5 Evered DC, Anderson J, Griggs P, Wakeford R. The correlates of research success. *BMJ* 1987;295:241-6.
- 6 Eaton DG, Thong YH. The bachelor of medical science research degree as a start for clinician-scientists. *Med Educ* 1985;19:445-51.
- 7 Wyllie AH, Currie AR. The Edinburgh intercalated honours BSc in pathology: evaluation of selection methods, undergraduate performance, and postgraduate career. *BMJ* 1986;292:1646-8.
- 8 Committee of Vice-Chancellors and Principals. *Clinical academic careers: report of an independent task force*. London: CVCP, 1997.
- 9 Entwistle N. *Styles of learning and teaching*. Chichester: John Wiley, 1981.
- 10 Newble DI, Entwistle NJ. Learning styles and approaches: implications for medical education. *Med Educ* 1986;20:162-75.
- 11 Biggs JB. *Student approaches to learning and studying*. Melbourne: Australian Council for Educational Research, 1987.
- 12 McManus IC, Richards P, Winder BC, Sproston KA, Styles V. Medical school applicants from ethnic minorities: identifying if and when they are disadvantaged. *BMJ* 1995;310:496-500.
- 13 Biggs JB. *Study process questionnaire: manual*. Melbourne: Australian Council for Educational Research, 1987.
- 14 O'Neil MJ, Child D. Biggs' SPQ: a British study of its internal structure. *Br J Educ Psychol* 1984;54:228-34.
- 15 Biggs JB. What do inventories of students' learning processes really measure? A theoretical review and clarification. *Br J Educ Psychol* 1993;63:3-19.
- 16 Crimlisk H, McManus IC. The effect of personal illness experience on career preference in medical students. *Med Educ* 1987;21:464-7.
- 17 Goldstein H. *Multilevel statistical models*. London: Arnold, 1995.
- 18 Woodhouse G. *Multilevel modelling applications: a guide for users of MLN*. London: Multilevel Models Project, Institute of Education, 1996.
- 19 Baron RM, Kenny DA. The moderator-mediator variable distinction in social psychological research: conceptual, strategic and statistical considerations. *J Personality Soc Psychol* 1986;51:1173-82.
- 20 McManus IC, Richards P, Winder BC, Sproston KA. Clinical experience, performance in final examinations, and learning style in medical students: prospective study. *BMJ* 1998;316:345-50.
- 21 McManus IC. *Medical students: origins, selection, attitudes and culture* [M.D. thesis]. London: University of London, 1985.
- 22 General Medical Council. *Tomorrow's doctors: recommendations on undergraduate medical education*. London: GMC, 1993:1-28.
- 23 Coles CR. Differences between conventional and problem-based curricula in their students' approaches to studying. *Med Educ* 1985;19:308-9.
- 24 Vernon DTA, Blake RL. Does problem-based learning work? A meta-analysis of evaluative research. *Acad Med* 1993;68:550-63.
- 25 Albanese MA, Mitchell S. Problem-based learning: a review of literature on its outcomes and implementation issues. *Acad Med* 1993;68:52-81.
- 26 Mårtensson DF. Students' approaches to studying in four medical schools. *Med Educ* 1986;20:532-4. (Accepted 20 May 1999)

**Correction**

*Heterogeneity of coronary heart disease risk factors in Indian, Pakistani, Bangladeshi, and European origin populations; cross sectional study*

Several errors occurred in table 6 of the paper by R Bhopal et al (24 July, pp 215-20) because of an editorial mistake. The correct table appears below. The authors would also like to point out that the first key message (which was inserted editorially as a background statement) is not a finding of their study and that their results undermine the statement.

**Table 6** Ethnic group with highest risk profile for various coronary heart disease risk factors: comparison of Indians, Pakistanis, Bangladeshis, and Europeans separately and of South Asians combined with Europeans

Risk factor	Women		Men	
	Indians, Pakistanis, Bangladeshis, and Europeans	South Asians and Europeans	Indians, Pakistanis, Bangladeshis, and Europeans	South Asians and Europeans
Economic circumstances (education, social class, overcrowding, income)	Bangladeshi	South Asian	Bangladeshi	European
Smoking	European	European	Bangladeshi	South Asian
Fruit and vegetable consumption	Bangladeshi	European	European	European
No cardioprotective level of alcohol	Bangladeshi	South Asian	Bangladeshi	South Asian
Level of exercise	Bangladeshi	South Asian	Bangladeshi	South Asian
Height	Bangladeshi	South Asian	Bangladeshi	South Asian
Obesity (body mass index)	Indian	South Asian	Indian	South Asian
Impaired glucose tolerance	Bangladeshi and Pakistani	South Asian	Pakistani	South Asian
Diabetes	Bangladeshi	South Asian	Bangladeshi	South Asian
HDL cholesterol	Bangladeshi	South Asian	Bangladeshi	South Asian
LDL cholesterol	European and Indian	European	European	European
Triglycerides	Bangladeshi	South Asian	Bangladeshi	South Asian
Lipoprotein(a)	Pakistani	South Asian	Bangladeshi	South Asian
Fibrinogen	Indian and European	European	Pakistani and European	European
Blood pressure	European and Indian	European	European	European