

RESEARCH ARTICLE

Genetic signatures for *Helicobacter pylori* strains of West African origin

Kennady K. Bullock¹, Carrie L. Shaffer², Andrew W. Brooks³, Ousman Secka⁴, Mark H. Forsyth⁵, Mark S. McClain¹, Timothy L. Cover^{1,6,7*}

1 Department of Medicine, Vanderbilt University School of Medicine, Nashville, Tennessee, United States of America, **2** Department of Veterinary Science, University of Kentucky, Lexington, Kentucky, United States of America, **3** Vanderbilt Genetics Institute, Vanderbilt University School of Medicine, Nashville, Tennessee, United States of America, **4** Medical Research Council Unit The Gambia, Banjul, The Gambia, **5** Department of Biology, The College of William and Mary, Williamsburg, Virginia, United States of America, **6** Department of Pathology, Microbiology and Immunology, Vanderbilt University School of Medicine, Nashville, Tennessee, United States of America, **7** Veterans Affairs Tennessee Valley Healthcare System, Nashville, Tennessee, United States of America

* timothy.l.cover@vanderbilt.edu



OPEN ACCESS

Citation: Bullock KK, Shaffer CL, Brooks AW, Secka O, Forsyth MH, McClain MS, et al. (2017) Genetic signatures for *Helicobacter pylori* strains of West African origin. PLoS ONE 12(11): e0188804. <https://doi.org/10.1371/journal.pone.0188804>

Editor: Masaru Katoh, National Cancer Center, JAPAN

Received: September 2, 2017

Accepted: November 13, 2017

Published: November 29, 2017

Copyright: This is an open access article, free of all copyright, and may be freely reproduced, distributed, transmitted, modified, built upon, or otherwise used by anyone for any lawful purpose. The work is made available under the [Creative Commons CC0](https://creativecommons.org/licenses/by/4.0/) public domain dedication.

Data Availability Statement: All relevant data are within the paper and its Supporting Information files.

Funding: This work was supported by the National Institutes of Health AI118932, AI039657, CA116087 (TC); and U.S. Department of Veterans Affairs 2I01BX000627 (TC).

Competing interests: The authors have declared that no competing interests exist.

Abstract

Helicobacter pylori is a genetically diverse bacterial species that colonizes the stomach in about half of the human population. Most persons colonized by *H. pylori* remain asymptomatic, but the presence of this organism is a risk factor for gastric cancer. Multiple populations and subpopulations of *H. pylori* with distinct geographic distributions are recognized. Genetic differences among these populations might be a factor underlying geographic variation in gastric cancer incidence. Relatively little is known about the genomic features of African *H. pylori* strains compared to other populations of strains. In this study, we first analyzed the genomes of *H. pylori* strains from seven globally distributed populations or subpopulations and identified encoded proteins that exhibited the highest levels of sequence divergence. These included secreted proteins, an LPS glycosyltransferase, fucosyltransferases, proteins involved in molybdopterin biosynthesis, and Clp protease adaptor (ClpS). Among proteins encoded by the *cag* pathogenicity island, CagA and CagQ exhibited the highest levels of sequence diversity. We then identified proteins in strains of Western African origin (classified as hspWAfrica by MLST analysis) with sequences that were highly divergent compared to those in other populations of strains. These included ATP-dependent Clp protease, ClpS, and proteins of unknown function. Three of the divergent proteins sequences identified in West African strains were characterized by distinct insertions or deletions up to 8 amino acids in length. These polymorphisms in rapidly evolving proteins represent robust genetic signatures for *H. pylori* strains of West African origin.

Introduction

Helicobacter pylori is a Gram-negative bacterial species that persistently colonizes the stomach in about half of the world's human population. *H. pylori* has a high mutation rate, and strains

from unrelated persons exhibit a high level of genetic diversity [1–4]. *H. pylori* strains from various geographic areas can be classified into distinct populations and subpopulations, based on multi-locus sequence typing (MLST) analysis [5–7]. *H. pylori* genetic diversity decreases with increasing geographic distance from Africa, the origin of *Homo sapiens* [6]. Therefore, *H. pylori* is thought to have co-evolved with humans over the past 100,000 years [8], and geographic differences among *H. pylori* strains reflect ancient human migration events [5, 6, 9].

Despite *H. pylori*'s long evolutionary history with humans, *H. pylori* colonization is a risk factor for the development of non-cardia gastric cancer and peptic ulcer disease. In 1994, the International Agency for Research on Cancer classified *H. pylori* as a bacterial carcinogen [10]. Genetic variation among *H. pylori* strains is known to be an important factor influencing the outcome of infection [1, 11]. For example, strains that contain the *cag* pathogenicity island (PAI), which encodes CagA (a secreted effector protein) and a type IV secretion system [12–15], are associated with a higher risk of gastric cancer or peptic ulceration compared to strains that do not contain the *cag* PAI [1, 11]. Similarly, strains that produce active forms of the VacA toxin and strains that produce specific outer membrane proteins have been linked to an increased risk of gastric cancer or peptic ulceration [11, 16].

The prevalence of *H. pylori* infection and the incidence of gastric cancer each vary geographically [17, 18]. In general, developing countries have a higher prevalence of *H. pylori* infection than developed countries. East Asia and certain parts of South America and Central America have high rates of gastric cancer, and several African countries have a relatively low rate of gastric cancer [18, 19]. The age-adjusted gastric cancer incidence rate is about 10-fold higher in males from East Asia than in West African males [18]. Interestingly, many African countries have a relatively low incidence of gastric cancer despite a high prevalence of *H. pylori*. Holcombe and colleagues termed this phenomenon “the African enigma”, and suggested that African strains of *H. pylori* may have reduced virulence [20].

A low rate of gastric cancer in Africa could be due to co-evolution of African strains with African humans over a very long period of time, allowing the microbe and host to form a more harmonious relationship [21, 22]. Consistent with the low rate of gastric cancer in many parts of Africa, studies in Colombia detected a reduced incidence of premalignant gastric lesions in humans of African ancestry who were colonized with *H. pylori* strains of African origin, compared to other populations residing in Colombia [21, 22]. Conversely, *H. pylori* strains of African origin were associated with pre-neoplastic gastric pathology in humans of Amerindian origin [21, 22]. These observations suggest that prolonged *H. pylori*-human coevolution is associated with attenuation of gastric pathology, whereas admixture of *H. pylori* strains and humans of different geographic origins can potentially lead to adverse outcomes.

Several other factors could contribute to a relatively low incidence of gastric cancer in Africa, including a high rate of intestinal parasitic infections that might attenuate *H. pylori* virulence [23], possible protective effects associated with simultaneous colonization by *cagA*-positive and *cagA*-negative strains [24], composition of the gastric or intestinal microbiome, or composition of the diet [25, 26]. A low reported incidence of gastric cancer might also reflect limitations in the availability of diagnostic procedures (such as endoscopy) and incomplete reporting [27].

Geographic differences in *H. pylori* virulence might be attributable to geographic variation in the presence of strain-specific (non-conserved) bacterial genes, or alternatively, might be due to geographic variation in *H. pylori* protein sequences that are associated with differences in protein function. For example, there is a high level of geographic variation in sequences of *H. pylori* CagA [12, 28–30], and the CagA proteins produced by East Asian strains cause more extensive alterations in gastric epithelial cells than CagA proteins produced by strains from other parts of the world [12, 30–33].

Thus far there has been relatively little effort to determine how African *H. pylori* strains differ from other populations of strains. MLST analysis is a useful approach for identifying *H. pylori* strains of African origin, but most of the polymorphisms analyzed by MLST are synonymous substitutions in housekeeping genes, which are unlikely to be associated with alterations in protein function. Moreover, the individual substitution mutations in housekeeping genes are not robust markers of African ancestry. One previous study reported that a 180-bp insertion in an intergenic region was present more frequently in strains of West African origin than in strains of European origin [34]. Thus far, this 180-bp insertion is the only genetic marker that can be used independently (i.e. not as a part of an MLST panel) for recognition of African strains. Therefore, the goal of the current study was to systematically analyze sequence diversity among *H. pylori* strains from diverse geographic origins, and identify proteins that have undergone a high level of sequence divergence in strains of West African origin.

Results

Identification of highly divergent proteins in geographically dispersed *H. pylori* populations

As a first approach for identifying *H. pylori* proteins that have undergone high levels of sequence diversification, we undertook a comparative genomic analysis of representative strains from globally distributed *H. pylori* populations. We analyzed seven strains that had previously been classified into seven distinct populations or subpopulations, based on MLST analysis (Table 1). Characteristics of the strains are shown in Table 1.

Comparative analysis of the seven strains with nWayComp identified 1187 gene products encoded by all seven strains. The mean \pm SD amino acid sequence identity of orthologous protein sequences among the seven strains was $94.2 \pm 0.06\%$. Seventy-two of the 1187 proteins exhibited a high level of sequence diversity (S1 Table), based on the criteria described in Methods. In comparisons of orthologous protein sequences among the seven strains, each of the divergent proteins had a mean amino acid sequence identity of $<90\%$. Representative examples of the divergent proteins are shown in Table 2. For comparison, examples of proteins involved in transcription and translation and retaining highly conserved sequences are shown in S2 Table (amino acid sequence identities $\geq 98.0\%$). The list of divergent proteins includes secreted proteins [35], a lipopolysaccharide glycosyltransferase, and fucosyltransferases (Table 2 and S1 Table). Two of the divergent proteins (encoded by HP0800 and HP0769) are predicted to be involved in synthesis of molybdopterin (a cofactor present in most

Table 1. Characteristics of *H. pylori* strains from geographically dispersed populations.

| Strain | MLST classification | Geographic Source | Disease State | <i>cagA</i> ^a | Genome size (Mb) | Jhp0153-jhp0152 180-bp insertion ^b |
|--------------|---------------------|-------------------|----------------|--------------------------|------------------|---|
| 26695 | hpEurope | United Kingdom | Gastritis | + | 1.67 | - |
| CC33C | hspSAfrica | South Africa | Not known | + | 1.66 | NA ^c |
| F30 | hspEAsia | Unknown | Not known | + | 1.58 | - |
| India7 | hpAsia2 | India | Not known | + | 1.68 | - |
| J99 | hspWAfrica | USA | Duodenal ulcer | + | 1.64 | + |
| Shi470 | hspAmerind | Peru | Gastric ulcer | + | 1.61 | - |
| SouthAfrica7 | hpAfrica2 | SouthAfrica | Not known | - | 1.68 | - |

^a Presence or absence of the *cagA* gene in the indicated genome.

^b Presence or absence of a 180-bp insertion, located in the intergenic region between JHP0153 and JHP1052 in strain J99, in the indicated genomes.

^cNA, not applicable. Presence or absence of this insertion in strain CC33C could not be ascertained based on analysis of the genome sequence deposited in Genbank.

<https://doi.org/10.1371/journal.pone.0188804.t001>

Table 2. Examples of proteins that exhibit high levels of sequence diversity among geographically dispersed populations of *H. pylori*.

| Gene no. (strain 26695) | Gene no. (strain J99) | Mean % amino acid identity ^a | Annotation or predicted function | Protein Length (amino acids) ^b |
|-------------------------|-----------------------|---|---|---|
| HP0032 | JHP0028 | 80.0 | ATP-dependent Clp protease adaptor protein | 91 |
| HP0159 | JHP0147 | 88.2 | LPS 1,2 glycosyltransferase | 372 |
| HP0160 | JHP0148 | 88.7 | HcpD penicillin-binding protein | 306 |
| HP0379 | JHP1002 | 76.8 | Alpha 1,3 fucosyltransferase | 425 |
| HP0492 | JHP0444 | 76.3 | Neuraminylactose-binding hemagglutinin paralog of HpaA | 278 |
| HP0651 | JHP0596 | 77.6 | Alpha 1,3 fucosyltransferase | 476 |
| HP0769 | JHP0706 | 87.5 | Molybdopterin guanine dinucleotide biosynthesis protein A | 201 |
| HP0800 | JHP0736 | 88.5 | Molybdopterin converting factor subunit 2 | 145 |
| HP0907 | JHP0843 | 86.6 | Predicted hook assembly protein | 301 |
| HP1051 | JHP0374 | 87.1 | Predicted coding region | 140 |
| HP1053 | JHP0372 | 87.9 | Septum site-directing protein MinC | 217 |
| HP1286 | JHP1206 | 86.4 | Predicted secreted protein | 182 |
| HP1551 | JHP1448 | 79.9 | Predicted secreted protein | 127 |

^a Based on comparisons among 7 globally dispersed strains of *H. pylori* (Table 1)

^b Length of protein encoded by reference strain 26695

<https://doi.org/10.1371/journal.pone.0188804.t002>

molybdenum-containing enzymes). Two others [the LPS 1,2-glycosyltransferase encoded by HP0159 and the protein encoded by HP1029] were identified as critical factors required for activity of the *cag* type IV secretion system [36]. The functions of many of the other divergent proteins listed in S1 Table are not known.

In a previous study, we identified proteins with sequences that were highly divergent in East Asian *H. pylori* strains compared to non-East Asian strains [37]. Among the 72 divergent proteins identified in the current analysis of globally dispersed strains, 22 were also identified in the previous study of East Asian strains [37] (S1 Table). The substantial concordance in results of these two analyses bolsters the conclusion that these are rapidly evolving proteins.

Comparative analysis of proteins encoded by the *cag* PAI

The foregoing analyses focused on proteins encoded by all of the *H. pylori* strains selected for study, and therefore, these analyses did not consider genetic variation in proteins encoded by the *cag* PAI, which is present in some strains but not others. Previous studies have shown that there is a high level of sequence variation among CagA proteins produced by different populations of *H. pylori* strains [12, 28, 29]. For example, the sequences of CagA proteins produced by East Asian or Amerindian strains of *H. pylori* are highly divergent compared to sequences of CagA produced by European strains [12, 28–30, 37–39], and this sequence variation is associated with different activities of the corresponding CagA proteins within host cells [12, 30, 31]. To systematically analyze sequence diversity in proteins encoded by the *cag* PAI, we analyzed the six *cagA*-positive strains from geographically dispersed regions (Table 1). Twenty-two intact *cag* PAI gene sequences were present in all six strains. The apparent lack of an intact *cagY* sequence in one or more of these strains is probably attributable to challenges with the sequencing of this gene, due to numerous repeat elements. The average amino acid sequence identity for the 22 Cag proteins among the six *H. pylori* strains was 95.0% (Table 3). As expected, CagA exhibited the highest level of sequence diversity (mean amino acid sequence identity of 81.6%). CagQ, a protein of unknown function, also exhibited a relatively high level

Table 3. Sequence diversity among *cag* pathogenicity island proteins in strains from geographically dispersed populations.

| Gene number (strain 26695) | Mean % amino acid identity ^a | <i>cag</i> PAI protein |
|----------------------------|---|------------------------|
| HP0520 | 95.3 | Cag1 |
| HP0522 | 94.7 | Cag3 |
| HP0523 | 93.0 | Cag4 |
| HP0524 | 98.5 | Cag5 |
| HP0526 | 97.6 | CagZ |
| HP0529 | 98.2 | CagW |
| HP0530 | 98.3 | CagV |
| HP0531 | 96.5 | CagU |
| HP0532 | 98.6 | CagT |
| HP0534 | 96.3 | CagS |
| HP0535 | 84.2 | CagQ |
| HP0536 | 96.0 | CagP |
| HP0537 | 98.4 | CagM |
| HP0538 | 95.3 | CagN |
| HP0539 | 96.0 | CagL |
| HP0540 | 95.7 | CagI |
| HP0541 | 92.8 | CagH |
| HP0542 | 96.9 | CagG |
| HP0543 | 96.8 | CagF |
| HP0545 | 95.7 | CagD |
| HP0546 | 94.2 | CagC |
| HP0547 | 81.6 | CagA |

^a Based on comparisons among globally dispersed strains of *H. pylori* (Table 1)

<https://doi.org/10.1371/journal.pone.0188804.t003>

of sequence diversity (84.2%) compared to other Cag proteins. These findings are similar to the results reported in a previous study, which analyzed the *cag* PAI in a large collection of strains and detected the highest levels of sequence diversity in CagA, followed by CagQ [28].

Genetic signatures for West African *H. pylori* strains

The proteins listed in Table 2 and S1 Table exhibit a high level of sequence diversity when comparing *H. pylori* strains from disparate global populations. We hypothesize that the protein sequences in the seven globally dispersed *H. pylori* strains selected for analysis might be generally representative of the sequences found in those seven populations of strains. To test whether the sequence diversity detected among the seven global *H. pylori* strains could be used as a tool for distinguishing among different populations of strains, we focused the next analysis on strains of West African origin, a population that has thus far not been studied in much detail. We selected eight strains of West African origin (S3 Table), as described in Methods, including reference strain J99 (hspWAfrica), which was used in the previous analysis (Table 1). For comparison, we selected 8 strains of European origin (hpEurope) (S3 Table), including reference strain 26695, which was also used in the previous analysis (Table 1). MLST analysis confirmed the classification of the two groups of strains as hspWAfrica and hpEurope, respectively (S1 Fig). Additional characteristics of the strains are shown in S3 Table.

A previous study reported the existence of a 180-bp insertion in an intergenic region of reference strain J99 (between genes JHP0152 and JHP0153) and other strains of African origin, which was absent from most strains of non-African origin [34]. This insertion was present in

all 8 of the hspWAfrica strains, as well as in one hpEurope strain (SJM180), but was absent from the other hpEurope strains (S3 Table). For comparison, among the global set of *H. pylori* strains (Table 1), the 180-bp insertion in the JHP0153-JHP0152 intergenic region was absent from all of the strains except for J99 (hspWAfrica). These results support the conclusion that this insertion in an intergenic region is a useful marker for strains of West African origin [34].

Comparative genomic analysis of the hspWAfrican and hpEurope strains using nWaycomp identified 1,113 proteins encoded by all 16 of the genomes. A large number of protein-encoding genes were present in only a subset of the 16 strains, but we did not identify any that were consistently present in hspWAfrica strains and absent from hpEurope strains, or vice versa. The mean amino acid identity in hpEurope-hspWAfrica comparisons for the full set of 1,113 orthologous proteins was 94.8%. Examples of proteins involved in transcription and translation and retaining highly conserved sequences are shown for comparison in S4 Table ($\geq 98.5\%$ amino acid identity in hpEurope-hspWAfrica comparisons). We identified eight proteins that were markedly divergent in hspWAfrica strains compared to hpEurope strains (Table 4), using the criteria described in Methods. In comparisons of protein sequences in the hspWAfrica strains with orthologous sequences in the hpEurope strains, the divergent proteins exhibited a mean amino acid sequence identity of 84.1% (range 73.3 to 89.9%).

Notably, four of the divergent proteins are encoded by two pairs of genes localized in the same region of the chromosome (HP0032, HP0033, HP1051 and HP1053 in reference strain 26695; JHP0028, JHP0029, JHP0374 and HP0372 in reference strain J99), and are likely co-transcribed. HP0032 and HP0033 are predicted to have related functions. HP0032 encodes an ATP-dependent Clp protease and HP0033 encodes a Clp protease adaptor (ClpS). ClpS modulates the specificity of protein degradation by the ClpAP chaperone-protease complex [40]. HP1053 is annotated as a septum site directing protein (MinC), and has a role in maintenance of *H. pylori* cell morphology [41]. Annotations or predicted functions of the other divergent proteins are shown in Table 4.

Multiple sequence alignments for three of the proteins considered divergent when comparing hspWAfrica strains with hpEurope strains (HP0408, HP0151, and HP0153) are shown in Fig 1. These alignments illustrate the presence of distinct insertions or deletions, up to eight amino acids in length, as well as individual amino acid polymorphisms that are differentially present in hspWAfrica strains and hpEurope strains (Fig 1).

Table 4. Proteins that exhibit high levels of sequence diversity when comparing hspWAfrica and hpEurope strains.

| Gene number (strain 26695) | Mean % amino acid identity, hpEurope—hspWAfrica | Mean % amino acid identity, intra-hpEurope | Mean % amino acid identity, intra-hspWAfrica | Annotation or predicted function | Protein length (amino acids) ^a |
|----------------------------|---|--|--|---|---|
| HP0032 | 73.3 | 88.3 | 99.0 | ATP-dependent Clp protease adaptor ClpS | 91 |
| HP0033 | 89.9 | 96.1 | 98.9 | ATP-dependent Clp protease | 741 |
| HP0257 | 88.3 | 94.3 | 93.9 | Predicted coding region | 219 |
| HP0384 | 87.9 | 94.0 | 97.7 | SPOR domain-containing protein | 250 |
| HP0408 | 80.5 | 90.3 | 97.3 | Predicted coding region | 162 |
| HP1051 | 87.5 | 93.5 | 95.6 | Predicted coding region | 140 |
| HP1053 | 87.0 | 93.3 | 98.4 | Septum site directing protein MinC | 217 |
| HP1070 | 78.5 | 87.4 | 88.8 | Predicted coding region | 84 |

^aLength of protein encoded by reference strain 26695.

HP0408

```

26695      MNI FQ TSLKCCVGLVLSVGVLLGDS-KAFKVRVDKSLTPPFLNVLSLAFKQDMKKEIVFV
B8         MSVFQMSLKCCVGLVLSMGVLLGDF-KAFKVRVDKSLAPPFLNVLSLAFKQDMKKEIIFV
G27       MNI FQ TSLKCCVGLVLSVGVLLGDS-KAFKVRVDKSLTPPFLNVLSLAFKQDMKKEIIFV
HPAG1     MNI FQ TGLKCCVGLVLSVGVLLGDS-KAFKVRVDKSLTPPFLNVLSLAFKQDMRKEIIFV
P12      MNI FQ TSLKCCVGLVLFMGVLLGDS-KAFKVRVDKSLTPPFLNVLSLAFKQDMKKEIIFV
B38      MSVFQMSLKCCVGLVLFMGVLLGDF-KAFKVRVDKSLAPPFLNVLSLAFKQDMKTDLIIFV
Lithuania75 MNI FQ TSLKCCMGLVLSMGVLLGDS-KAFKIRVDKSLAPPFLNVLSLAFKQDMRKEIVFV
SJM180   MNI FQ TSLKCCVGLVLFMGVLLGDS-KAFKVRVDKSLTPPFLNVLSLAFKQDMKKEIIFV
J99      MSVFQ TSL--CVGLLFFGGVLLGDSSKALKVRVDKGLTPPFLNVLSLAFKQDMKTDLIIFV
908     MSVFQ TSL--CVGLLFFGGVLLGDS-KALKVRVDKSLTPPFLNVLSLAFKQDMKTDLIIFV
GAM94/24 MSVFQ TSL--CVGLLFFGGVLLGDSSKAFKVRVDKGLAPPFLNVLSLAFKQDMKTDLIIFV
GAM115Ai MSVFQ TSL--CVGLLFFGGVLLGDSSKAFKVRVDKGLTPPFLNVLSLAFKQDMKTDLIIFV
GAM201Ai MSVFQ TSL--CVGLLFFGGVLLGDSSKAFKVRVDKGLTPPFLNVLSLAFKQDMKTDLIIFV
GAM246Ai MSVFQ TSL--CVGLLFFGGVLLGDSSKAFKVRVDKGLTPPFLNVLSLAFKQDMKTDLIIFV
GAM252T  MSVFQ TSL--CVGLLFFGGVLLGDSSKAFKVRVDKGLTPPFLNVLSLAFKQDMKTDLIIFV
GAM260Bsi MSVFQ TSL--CVGLLFFGGVLLGDSSKALKVRVDKSLTPPFLNVLSLAFKQDMKTDLIIFV
          *  *  *  *  *  *  *  *  *  *  *  *  *  *  *  *  *  *  *  *  *  *  *  *
    
```

HP1051

```

26695      QNNFLCASYTSKSKTSEALVEVFSQLFKDFKNP-----TLPAIKGVVYAKGPGSFTSL
B8         QNNFLCASYTSKSKTSEALVEVFSQLFKDFKNP-----NLPAIKGVVYAKGPGSFTSL
G27       QNNFLCASYTSKSKTSEALVEVFSQLFKDFKNP-----TLPAIKGVVYAKGPGSFTSL
HPAG1     QNNFLCASYTSKSKTSEALVEVFSQLFKDFKNP-----TLPAIKGVVYAKGPGSFTSL
P12      QNNFLGTSYTSKSKTSEALVEVFSQLFKDFKNP-----TLPAIKGVVYAKGPGSFTSL
B38      QNNFLCASYTSKSKTSEALVEVFSQLFKDFKNP-----TLPAIKGVVYAKGPGSFTSL
Lithuania75 QNNFLCASYTSKSKTSEALVEVFSQLFKDFKNP-----TLPAIKGVVYAKGPGSFTSL
SJM180   QNNFLCASYTSKSKTSEALVEVFSQLFKDFKNP-----TLPAIKGVVYAKGPGSFTSL
J99      QNDFLCNSYTSKSKTSEALVGVFSQLFEDFKNPTIYPTIYDPLPAIKGVVYAKGPGSFTSL
908     QNDFLCNSYTSKSKTSEALVGVFSQLFEDFKNPAIYPTIYDPLPAIKGVVYAKGPGSFTSL
GAM94/24 QNDFLCNSYASKLKTSEALVGVFSQLFEDFKNPTIYPTIYDPLPAIKGVVYAKGPGSFTSL
GAM115Ai QNSFLCASYTSKSKTSEALVGVFSQLFEDFKNPTIYPTIYDPLPAIKGVVYAKGPGSFTSL
GAM201Ai QNDFLCNSYTSKSKTSEALVGVFSQLFEDFKNPTIYPTIYDPLPAIKGVVYAKGPGSFTSL
GAM246Ai QNDFLCNSYASKLKTSEALVGVFSQLFEDFKNPTIYPTIYDPLPAIKGVVYAKGPGSFTSL
GAM252T  QDNSLCASYTSKSKTSEALVGVFSQLFEDFKNPAIYPTIYDPLPAIKGVVYAKGPGSFTSL
GAM260Bsi QNNSLCASYTSKSKTSEALVGVFSQLFEDFKNPTIYPTIYDPLPAIKGVVYAKGPGSFTSL
          *  *  *  *  *  *  *  *  *  *  *  *  *  *  *  *  *  *  *  *  *  *  *  *
    
```

HP1053

```

26695      IFKYDIESEVKAVLRKHQLLFLETNRVLNGRHIKTMPLKDETDHPKPNHS-KTEPKTTIY
B8         IFKYDIEPEVKAILHKKHQLLFLETNRNLNGRHIKTMPLKDETDHSPKPNP-KTEPKTTIY
G27       IFKYDIEPEVKAILRKHQLLFLETNRALNGRHIKTMPLKEETDHPKPNHS-KTEPKTTIY
HPAG1     IFKYDIESEVKAVLRKHQLLFLETNRVLNGRHIKTMPLKEETDHPKPNHS-KTEPKTTIY
P12      IFKYDIEPEVKVILHKKHQLLFLETNRPLNGRHIKTMPLKEETNHSKPNHS-KTEPKTTIY
B38      IFKYDIEPEVKAILHKKHQLLFLETNRALNGRHIKTMPLKEETNHSKPNHS-KTEPKTTIY
Lithuania75 IFKYDIEPEVKAILHKKHQLLFLETNRALNGRHIKTMPLKEETDHPKPNHS-KTETKTTIY
SJM180   IFKYDIEPEVKAILHKKHQLLFLETNRALNGRHIKTMPLKEETDHPKPNP-KTEPKTTIY
J99      IFKYDIESEVKAVLRKHQLLFLETNRALNGRYIKTT--EKDANLLKQNSPNAIEPKTTIY
908     IFKYDIESEVKAVLRKHQLLFLETNRALNGRYIKTT--EKDANLLKQNSPNAIEPKTTIY
GAM94/24 IFKYDIEPEVKAVLRKHQLLFLETNRALNGRYIKTT--EKDANLLKQNSPNAIEPKTTIY
GAM115Ai IFKYDIEPEVKAVLRKHQLLFLETNRALNGRYIKTT--EKDANLLKQNSPNAIEPKTTIY
GAM201Ai IFKYDIESEIKAVLRKHQLLFLETNRALNGRHIKTT--EKDANLLKQNSPNAIEPKTTIY
GAM246Ai IFKYDIEPEVKAVLRKHQLLFLETNRALNGRYIKTT--EKDANLLKQNSPNAIEPKTTIY
GAM252T  IFKYDIEPEIKAILHKKHQLLFLETNRALNGRYIKTT--EKDANLLKQNSPNAIEPKTTIY
GAM260Bsi IFKYDIEPEVKAVLRKHQLLFLETNRNLNGRYIKTT--EKDANLLKQNSPNAIEPKTTIY
          *  *  *  *  *  *  *  *  *  *  *  *  *  *  *  *  *  *  *  *  *  *  *  *
    
```

Fig 1. Sequence alignments of three proteins exhibiting high levels of sequence divergence when comparing hpEurope and hspWAfrica strains. A) Amino acid sequence alignment of proteins encoded by A) HP0408, B) HP1051, and C) HP1053. The HP0408 alignment corresponds to the amino-terminus, and the other two alignments correspond to internal sequences. For each protein, the first eight lines are sequences from hpEurope strains and the last eight lines are sequences from hspWAfrica strains.

<https://doi.org/10.1371/journal.pone.0188804.g001>

The list of divergent proteins in Table 4 was then compared to the list of 72 divergent proteins found in the worldwide, geographic analysis (S1 Table). Three of the 8 proteins that were divergent when comparing hspWAfrica strains with hpEurope strains (HP0032, HP1051, and HP1053) were also identified as highly divergent in the analysis of globally distributed strains (Tables 2 and 4 and S1 Table). One of these (HP0384) was identified in a previous analysis that focused on proteins with sequences that are highly divergent when comparing East Asian *H. pylori* strains with non-Asian strains (hpEurope or hspWAfrica) [37].

To evaluate whether increased sequence diversity among the eight divergent proteins resulted from evolutionary pressures, we analyzed the nucleotide sequences encoding these proteins using the McDonald-Kreitman test of positive diversifying selection [42]. This test compares ratios of synonymous-to-non-synonymous polymorphisms and divergence (P_s/P_n and D_s/D_n) for sets of genes from two populations. The use of this test allows us to analyze whether a set of genes from either the African or European *H. pylori* population exhibits a stronger signal of adaptive pressure through increased rates of non-synonymous fixation compared to the corresponding set of genes from the other *H. pylori* population. We found that two of the eight genes (HP0257 and HP1053) were under diversifying selection (Table 5). The Neutrality Index (NI) for both of these genes was low (<0.3), indicating high rates of fixation for non-synonymous polymorphisms.

A previous analysis did not reveal any substantial divergence in CagA sequences when comparing European and African *H. pylori* strains [29]. Therefore, we analyzed the set of hpEurope and hspWAfrica strains to detect possible divergence in proteins encoded by the *cag* PAI (including CagA). Among the 13 strains that contained a *cag* PAI (S3 Table), 22 *cag* PAI genes were present in all 13 strains. The average amino acid sequence identity for this group of 22 proteins among the 13 strains was 95.7% (Table 6). Consistent with expectations, the highest level of sequence variation was found in CagA, and CagQ also displayed a relatively high level of sequence variation compared to other Cag proteins (Table 6). Notably, this analysis did not detect substantial divergence of CagA when comparing European and African strains (i.e., the mean level of amino acid sequence identity when comparing European and African strains was not substantially different from what was calculated for in intra-Europe or intra-Africa analyses) (Table 6). Similarly, manual inspection of the aligned CagA sequences identified relatively few polymorphisms that were unequally distributed between European and West African strains. Thus, the CagA sequences in East Asian and Amerindian populations of *H. pylori*

Table 5. Signatures of positive selection in genes encoding proteins with divergent sequences.

| Gene ID | D_n^a | D_s^a | P_n^a | P_s^a | P value | NI ^b | α -Value ^c |
|---------|---------|---------|---------|---------|---------|-----------------|------------------------------|
| HP0032 | 0 | 0 | 26 | 42 | None | None | None |
| HP0033 | 16.37 | 8.02 | 253 | 137 | 0.821 | 1.104 | -0.104 |
| HP0257 | 1 | 3.01 | 71 | 26 | 0.036 | 0.122 | 0.877 |
| HP0384 | 13.82 | 14.22 | 67 | 58 | 0.679 | 0.841 | 0.158 |
| HP0408 | 8.47 | 4.03 | 61 | 66 | 0.183 | 2.274 | -1.274 |
| HP1051 | 0 | 1 | 54 | 31 | 0.19 | 0 | 1 |
| HP1053 | 6.21 | 9.12 | 78 | 33 | 0.02 | 0.288 | 0.711 |
| HP1070 | 2.05 | 3.03 | 30 | 53 | 0.847 | 1.195 | -0.195 |

^a P , polymorphisms within the populations; D , divergence or fixed difference between populations; n , nonsynonymous; s , synonymous.

^bNeutrality Index (NI) calculated as $NI = (P_n/P_s)/(D_n/D_s)$

^cProportion of adaptive substitutions estimated as $1 - NI$.

<https://doi.org/10.1371/journal.pone.0188804.t005>

Table 6. Sequence diversity among *cag* pathogenicity island proteins from African and European strains.

| Gene no. (strain 26695) | % amino acid identity, hp-Europe-hspWAfrica | % amino acid identity, intra-hpEurope | % amino acid identity, intra-hspWAfrica | <i>cag</i> PAI protein |
|-------------------------|---|---------------------------------------|---|------------------------|
| HP0520 | 95.4 | 95.5 | 98.0 | Cag1 |
| HP0522 | 94.0 | 97.2 | 98.1 | Cag3 |
| HP0523 | 93.3 | 95.3 | 98.3 | Cag4 |
| HP0524 | 98.7 | 98.8 | 99.5 | Cag5 |
| HP0526 | 97.4 | 98.7 | 99.1 | CagZ |
| HP0528 | 98.1 | 98.6 | 99.3 | CagX |
| HP0530 | 98.3 | 99.1 | 99.2 | CagV |
| HP0531 | 96.6 | 96.9 | 99.1 | CagU |
| HP0532 | 97.7 | 99.2 | 98.8 | CagT |
| HP0534 | 94.7 | 96.0 | 97.2 | CagS |
| HP0535 | 90.7 | 91.3 | 95.6 | CagQ |
| HP0536 | 96.1 | 95.1 | 99.7 | CagP |
| HP0537 | 98.5 | 99.0 | 99.5 | CagM |
| HP0538 | 94.6 | 95.5 | 97.8 | CagN |
| HP0539 | 96.5 | 97.2 | 97.8 | CagL |
| HP0540 | 96.6 | 98.4 | 97.2 | CagI |
| HP0541 | 96.3 | 94.7 | 99.0 | CagH |
| HP0542 | 97.4 | 98.9 | 99.4 | CagG |
| HP0543 | 96.6 | 96.9 | 99.1 | CagF |
| HP0545 | 96.7 | 98.0 | 98.2 | CagD |
| HP0546 | 94.5 | 96.7 | 95.5 | CagC |
| HP0547 | 87.3 | 87.2 | 90.8 | CagA |

<https://doi.org/10.1371/journal.pone.0188804.t006>

exhibit geographically distinct features [12, 29, 37], but a similar divergence is not readily apparent when comparing European and West African strains.

Genetic signatures of West African strains are rare in most non-African populations of strains

We next investigated whether the insertions and deletions identified in the comparison of hspWAfrica and hpEurope strains (in HP0408, HP0151, and HP0153, see Fig 1) were present in the set of globally distributed strains (Table 1). For both HP0408 and HP1053, the indel pattern characteristic of the hspWAfrica strains and exemplified by strain J99 was observed in strain CC3C (hspSAfrica), but not in any of the other strains. Similarly, for HP1051, the hspWAfrica pattern exemplified by strain J99 was observed in CC3C (hspSAfrica) and India7 (hpAsia2), but not in other strains (Fig 2).

We also examined genomes from a larger group of strains that were isolated in multiple global locations and previously classified into distinct population groups based on MLST analysis (S5 Table). This analysis confirmed that the insertions and deletions characteristic of hspWAfrica strains (in HP0408, HP0151, and HP0153, see Fig 1) were rare in non-African populations of strains (Fig 3). Collectively, these results indicate that these insertions or deletions are markers for *H. pylori* strains of African origin.

Discussion

H. pylori exhibits a high level of genetic diversity [1–4], and *H. pylori*-associated disease states [especially gastric cancer] exhibit geographic variation in incidence. For example, the incidence

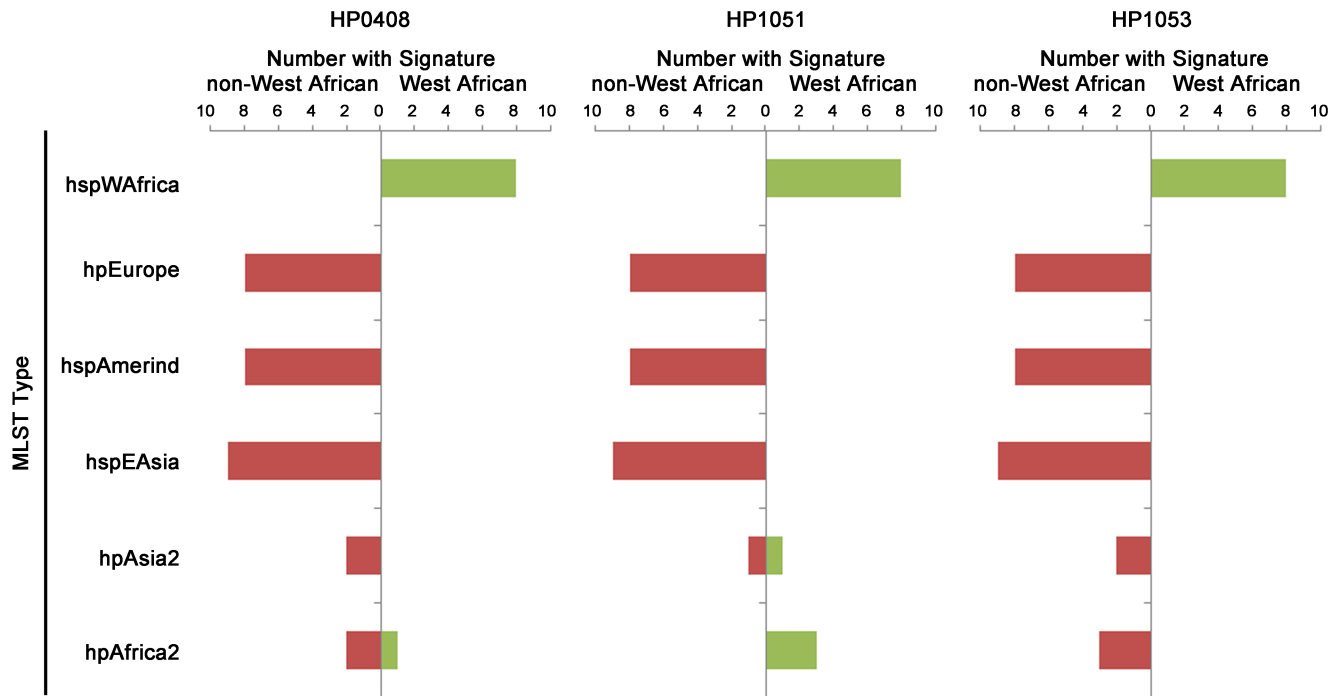


Fig 3. Distribution of West African signatures in strains of diverse geographic origins. Genome sequences of *H. pylori* strains previously classified by MLST into the indicated population groups [5, 28, 43] were searched by BLAST to detect the insertions and deletions illustrated in Fig 1. The figure illustrates the number of strains in each population group that contained the insertions or deletions characteristic of hspWAfrica strains.

<https://doi.org/10.1371/journal.pone.0188804.g003>

observed sequence divergence in some proteins could potentially have resulted from horizontal transfer events in which *H. pylori* acquired DNA from a closely related species.

We then conducted a more focused analysis to identify a specific group of rapidly evolving proteins, namely, those that have distinctive features in West African strains. This analysis revealed eight proteins that were highly divergent in hspWAfrica strains compared to hpEurope strains. Three of the eight proteins contained amino acid insertions or deletions that were differentially distributed between the two populations. These insertions or deletions, up to 8 amino acids in length, presumably reflect low probability mutational events that occurred rarely during the evolution of *H. pylori*. The genes for two of these eight proteins were determined to be under diversifying selection, based on use of the McDonald-Kreitman test, which supports the hypothesis that the divergence of these sequences is the consequence of evolutionary selective pressures. Analyses of additional *H. pylori* strains, classified into multiple populations groups by MLST analysis, indicated that the insertions and deletions present in West African strains were rarely detected in other populations of strains (Fig 3). Therefore, these insertions and deletions are useful biomarkers for strains of West African origin.

Rapidly evolving proteins potentially exhibit alterations in activity or acquire new functions as a consequence of their diversification, as exemplified by different activities exhibited by various forms of *H. pylori* CagA or VacA [12, 16, 29–33, 52]. CagA exhibits marked sequence divergence in East Asian strains compared to non-East Asian strains [12, 28, 29], but relatively little evidence of divergence when comparing West African and European strains. Therefore, a geographic specialization of individual *H. pylori* proteins may be more readily detectable in some geographic regions than in others. We speculate that specific mutations in rapidly

evolving *H. pylori* proteins confer selective advantages that are most relevant in strains that colonize humans with specific genetic traits or strains exposed to specific gastric environments, which might help to explain the geographic distribution of the corresponding sequences.

Since genome sequences of *H. pylori* strains isolated in multiple West African countries are not currently available, the analysis reported in this study utilized six West African strains isolated from patients in The Gambia (all classified as hspWAfrica by MLST analysis) and two strains isolated from patients in Europe or the United States (also classified as hspWAfrica by MLST analysis). BLAST analyses of *H. pylori* genomes available in Genbank confirms that these insertions or deletions are present in many *H. pylori* strains isolated in The Gambia, in addition to the six Gambian strains analyzed in the current study (data not shown). It is not known at present whether the patterns of sequence divergence reported in the current study are generally representative of all West African strains, or limited to strains from certain regions of West Africa. In future studies, it will be important to analyze genetic features of strains from additional regions of West Africa.

Elucidating genetic features of African *H. pylori* strains is relevant for understanding the relatively low rate of gastric cancer reported in Africa. A previous study identified several strain-specific genes that were present more commonly in African strains than in other populations of strains [53], but in the current study, we did not identify any genes that were present uniquely in African strains or European strains. The geographic differences in protein sequences identified in the current study could potentially be associated with alterations in protein function, which might result in alterations of *H. pylori* virulence. In future studies, it will be important to investigate possible functional consequences of the observed sequence variations, and further investigate the distribution of these sequence variations to determine if there is any correlation with disease state.

Materials and methods

Selection of *H. pylori* genomes for analysis

H. pylori strains were selected for analysis based on the availability of genome sequences in Genbank. Complete genome sequences were analyzed whenever possible. If complete genomes were not available, incomplete genome sequences with the lowest number of contigs were chosen. In an initial study, we analyzed representative genomes from seven *H. pylori* populations or subpopulations (hpEurope, hpAfrica2, hspSAfrica, hspEAsia, hspAmerind, hspWAfrica, hpAsia2), all of which were previously classified by MLST analysis. Further analyses were conducted with multiple *H. pylori* strains of European or West African origin (classified as hpEurope or hspWAfrica, based on MLST analysis). These genome sequences were initially selected based on published MLST data or based on the geographic location where the strains were isolated (Europe or West Africa). Six of the 8 strains of West African origin were originally isolated in The Gambia, and previous MLST analyses showed that most strains isolated in the Gambia are classified as hspWAfrica, based on MLST analysis [54].

Accession numbers for the genomes analyzed in this study are as follows: 26695 (NC_000915.1), B8 (NC_014256.1), G27 (NC_011333.1), HPAG1 (NC_008086.1), P12 (NC_011498.1), B38 (NC_012973.1), Lithuania75 (NC_017362.1), SJM180 (NC_014560.1), J99 (NC_000921.1), 908 (NC_017357.1), Gambia94/24 (NC_017371.1), GAM115Ai (NZ_APDB00000000.1), GAM201Ai (NZ_APDC00000000.1), GAM246Ai (NZ_APDM00000000.1), GAM252T (NZ_APDR00000000.1), GAM260Bsi (NZ_APDV00000000.1), SouthAfrica7 (NC_017361.1), Shi470 (NC_010698.2), India7 (NC_017372.1), F30 (NC_017365.1), and CC33C (NZ_CP011484.1)

Multi-locus sequence analysis

Multilocus sequence typing was performed on the strains of West African and European origin as described previously [37, 55, 56]. Nucleotide sequences of 7 conserved housekeeping genes (*atpA*, *efp*, *mutY*, *ppa*, *trpC*, *yphC*, and *ureI*) from each strain were extracted from Genbank or an *H. pylori* MLST database (<http://pubmlst.org/helicobacter>), and were concatenated and aligned to corresponding loci from 178 reference strains (previously assigned to *H. pylori* populations or subpopulations) using the Muscle algorithm within MEGA7. Phylogenetic relationships were analyzed using MEGA7 [57] with the Kimura 2-parameter model of nucleotide substitution and 1,000 bootstrap replicates.

Identification of highly divergent protein sequences

Seven representative strains from diverse geographic origins (Table 1) were compared at the whole-genome level using nWayComp, which compares deduced protein sequences and searches for sequence homologies among multiple strains [37, 58]. For each protein encoded by all seven strains, a 7x7 table of amino acid sequence identities was generated, and mean percent amino acid identities were calculated based on all possible comparisons among the 7 strains. The mean \pm SD amino acid sequence identity for the full set of 1187 orthologous protein sequences was $94.2 \pm 0.06\%$. We designated a mean percent amino acid identity of $<90\%$ as the criterion for highly divergent protein sequences. The gene alignments of divergent genes were examined by eye to exclude possible misalignments or mismatches to known paralogs, and proteins with mean percent amino acid sequence identity values of less than 50% were excluded. The gene numbers of orthologs in reference strains 26695 and J99 were determined using the PyloriGene webserver (<http://genolist.pasteur.fr/PyloriGene/>).

Eight strains classified as hpEurope and eight strains classified as hspWAfrica based on MLST (S3 Table) were similarly analyzed at the genome-wide level using nWaycomp [58]. For each protein encoded by all 16 strains, a 16x16 table of amino acid sequence identities was generated. Mean percent amino acid identities were calculated based on several comparisons among the 16 strains, and three values were calculated. The first value was the mean percent amino acid sequence identity based on comparisons among only the eight hspWAfrica strains, the second was the mean percent amino acid sequence identity based on comparisons among the eight hpEurope strains, and the third was the mean percent amino acid sequence identity based on comparisons of hspWAfrica strains with hpEurope strains. The African-European result was subtracted from the intra-African result to obtain a first difference value. The African-European result was then subtracted from the intra-European result to obtain a second difference value. If both difference values were $>5\%$ (corresponding to $>5\%$ difference in amino acid sequence identity), the protein was considered to exhibit a high level of divergence when comparing hspWAfrican and hpEurope strains.

McDonald-Kreitman test methods

Nucleotide sequences from 16 *H. pylori* strains (eight classified as hpEurope and eight classified as hspWAfrica) encoding proteins with divergent sequences were analyzed using the McDonald-Kreitman test [42]. Nucleotide sequences were aligned using Muscle [59]. The McDonald-Kreitman test was performed using an online resource which ignores codons with gaps and applies a Jukes and Cantor divergence correction [60]. P indicates the polymorphisms within the populations, and D indicates the fixed divergence between populations, with n denoting nonsynonymous and s , synonymous changes. The Neutrality Index was calculated as $NI = (Pn/Ps)/(Dn/Ds)$, and the alpha value depicts the proportion of adaptive substitutions estimated as $1 - NI$.

Supporting information

S1 Table. Proteins exhibiting high levels of sequence divergence among strains from seven geographically distributed *H. pylori* populations.

(XLSX)

S2 Table. Examples of proteins exhibiting a high level of sequence conservation when comparing geographically dispersed populations of *H. pylori*.

(DOCX)

S3 Table. Characteristics of strains classified as hpEurope and hspWAfrica.

(DOCX)

S4 Table. Examples of proteins exhibiting a high level of sequence conservation when comparing hspWAfrica and hpEurope populations of *H. pylori*.

(DOCX)

S5 Table. MLST classification of *H. pylori* strains analyzed in this study.

(DOCX)

S1 Fig. MLST analysis of *H. pylori* strains known or predicted to have African or European origins. Neighbor-joining tree constructed using MEGA7 to assign an MLST classification based on concatenated sequences of the seven conserved housekeeping genes (*atpA*, *efp*, *mutY*, *ppa*, *trpC*, *ureA*, and *yphC*). A set of sequences previously assigned to distinct populations or subpopulations are included as references. Eight strains analyzed in the current study were classified as hpEurope (blue circles) and eight were classified as hspWAfrica (red circles).

(TIF)

Acknowledgments

We thank Seth Bordenstein and Douglas Berg for helpful discussions.

Author Contributions

Conceptualization: Mark S. McClain, Timothy L. Cover.

Formal analysis: Kennady K. Bullock, Carrie L. Shaffer, Andrew W. Brooks, Mark S. McClain.

Funding acquisition: Timothy L. Cover.

Investigation: Kennady K. Bullock, Carrie L. Shaffer, Andrew W. Brooks, Mark S. McClain, Timothy L. Cover.

Methodology: Andrew W. Brooks, Ousman Secka, Mark H. Forsyth, Mark S. McClain.

Project administration: Timothy L. Cover.

Resources: Ousman Secka, Timothy L. Cover.

Supervision: Mark S. McClain, Timothy L. Cover.

Writing – original draft: Kennady K. Bullock.

Writing – review & editing: Kennady K. Bullock, Carrie L. Shaffer, Andrew W. Brooks, Ousman Secka, Mark H. Forsyth, Mark S. McClain, Timothy L. Cover.

References

1. Blaser MJ, Berg DE. *Helicobacter pylori* genetic diversity and risk of human disease. *J Clin Invest*. 2001; 107(7):767–73. <https://doi.org/10.1172/JCI12672> PMID: 11285290
2. Suerbaum S, Josenhans C. *Helicobacter pylori* evolution and phenotypic diversification in a changing host. *Nat Rev Microbiol*. 2007; 5(6):441–52. <https://doi.org/10.1038/nrmicro1658> PMID: 17505524
3. Linz B, Schuster SC. Genomic diversity in *Helicobacter* and related organisms. *Res Microbiol*. 2007; 158(10):737–44. <https://doi.org/10.1016/j.resmic.2007.09.006> PMID: 18023330
4. Baltrus DA, Blaser MJ, Guillemin K. *Helicobacter pylori* Genome Plasticity. *Genome Dyn*. 2009; 6:75–90. <https://doi.org/10.1159/000235764> PMID: 19696495
5. Falush D, Wirth T, Linz B, Pritchard JK, Stephens M, Kidd M, et al. Traces of human migrations in *Helicobacter pylori* populations. *Science*. 2003; 299(5612):1582–5. <https://doi.org/10.1126/science.1080857> PMID: 12624269
6. Linz B, Balloux F, Moodley Y, Manica A, Liu H, Roumagnac P, et al. An African origin for the intimate association between humans and *Helicobacter pylori*. *Nature*. 2007; 445(7130):915–8. <https://doi.org/10.1038/nature05562> PMID: 17287725
7. Suzuki R, Shiota S, Yamaoka Y. Molecular epidemiology, population genetics, and pathogenic role of *Helicobacter pylori*. *Infect Genet Evol*. 2012; 12(2):203–13. <https://doi.org/10.1016/j.meegid.2011.12.002> PMID: 22197766
8. Moodley Y, Linz B, Bond RP, Nieuwoudt M, Soodyall H, Schlebusch CM, et al. Age of the association between *Helicobacter pylori* and man. *PLoS Pathog*. 2012; 8(5):e1002693. <https://doi.org/10.1371/journal.ppat.1002693> PMID: 22589724
9. Moodley Y, Linz B. *Helicobacter pylori* Sequences Reflect Past Human Migrations. *Genome Dyn*. 2009; 6:62–74. <https://doi.org/10.1159/000235763> PMID: 19696494
10. Anonymous, editor Schistosomes, liver flukes and *Helicobacter pylori*. IARC monographs on the evaluation of carcinogenic risks to humans. International Agency for Research on Cancer; 1994 7–14 June 1994; Lyon, France.
11. Cover TL. *Helicobacter pylori* Diversity and Gastric Cancer Risk. *MBio*. 2016; 7(1):e01869–15. <https://doi.org/10.1128/mBio.01869-15> PMID: 26814181
12. Hatakeyama M. *Helicobacter pylori* CagA and gastric cancer: a paradigm for hit-and-run carcinogenesis. *Cell Host Microbe*. 2014; 15(3):306–16. <https://doi.org/10.1016/j.chom.2014.02.008> PMID: 24629337
13. Tegtmeyer N, Neddermann M, Asche CI, Backert S. Subversion of host kinases: a key network in cellular signaling hijacked by *Helicobacter pylori* CagA. *Mol Microbiol*. 2017.
14. Fischer W. Assembly and molecular mode of action of the *Helicobacter pylori* Cag type IV secretion apparatus. *FEBS J*. 2011; 278(8):1203–12. <https://doi.org/10.1111/j.1742-4658.2011.08036.x> PMID: 21352490
15. Frick-Cheng AE, Pyburn TM, Voss BJ, McDonald WH, Ohi MD, Cover TL. Molecular and Structural Analysis of the *Helicobacter pylori* cag Type IV Secretion System Core Complex. *MBio*. 2016; 7(1):e02001–15. <https://doi.org/10.1128/mBio.02001-15> PMID: 26758182
16. Cover TL, Blanke SR. *Helicobacter pylori* VacA, a paradigm for toxin multifunctionality. *Nat Rev Microbiol*. 2005; 3(4):320–32. <https://doi.org/10.1038/nrmicro1095> PMID: 15759043
17. Hooi JKY, Lai WY, Ng WK, Suen MMY, Underwood FE, Tanyingoh D, et al. Global Prevalence of *Helicobacter pylori* Infection: Systematic Review and Meta-analysis. *Gastroenterology*. 2017.
18. Torre LA, Bray F, Siegel RL, Ferlay J, Lortet-Tieulent J, Jemal A. Global cancer statistics, 2012. *CA Cancer J Clin*. 2015; 65(2):87–108. <https://doi.org/10.3322/caac.21262> PMID: 25651787
19. de Martel C, Forman D, Plummer M. Gastric cancer: epidemiology and risk factors. *Gastroenterol Clin North Am*. 2013; 42(2):219–40. <https://doi.org/10.1016/j.gtc.2013.01.003> PMID: 23639638
20. Holcombe C. *Helicobacter pylori*: the African enigma. *Gut*. 1992; 33(4):429–31. PMID: 1582581
21. Kodaman N, Pazos A, Schneider BG, Piazuolo MB, Mera R, Sobota RS, et al. Human and *Helicobacter pylori* coevolution shapes the risk of gastric disease. *Proceedings of the National Academy of Sciences*. 2014; 111(4):1455–60.
22. Kodaman N, Sobota RS, Mera R, Schneider BG, Williams SM. Disrupted human-pathogen co-evolution: a model for disease. *Front Genet*. 2014; 5:290. <https://doi.org/10.3389/fgene.2014.00290> PMID: 25202324
23. Fox JG, Beck P, Dangler CA, Whary MT, Wang TC, Shi HN, et al. Concurrent enteric helminth infection modulates inflammation and gastric immune responses and reduces *Helicobacter*-induced gastric atrophy. *Nat Med*. 2000; 6(5):536–42. <https://doi.org/10.1038/75015> PMID: 10802709

24. Secka O, Antonio M, Berg DE, Tapgun M, Bottomley C, Thomas V, et al. Mixed infection with *cagA* positive and *cagA* negative strains of *Helicobacter pylori* lowers disease burden in The Gambia. *PLoS One*. 2011; 6(11):e27954. <https://doi.org/10.1371/journal.pone.0027954> PMID: 22140492
25. Cover TL, Peek RM Jr. Diet, microbial virulence, and *Helicobacter pylori*-induced gastric cancer. *Gut Microbes*. 2013; 4(6):482–93. <https://doi.org/10.4161/gmic.26262> PMID: 23989802
26. Fox JG, Wang TC. Dietary factors modulate *Helicobacter*-associated gastric cancer in rodent models. *Toxicol Pathol*. 2014; 42(1):162–81. <https://doi.org/10.1177/0192623313512564> PMID: 24301796
27. Asombang AW, Rahman R, Ibdah JA. Gastric cancer in Africa: current management and outcomes. *World J Gastroenterol*. 2014; 20(14):3875–9. <https://doi.org/10.3748/wjg.v20.i14.3875> PMID: 24833842
28. Olbermann P, Josenhans C, Moodley Y, Uhr M, Stamer C, Vauterin M, et al. A global overview of the genetic and functional diversity in the *Helicobacter pylori* *cag* pathogenicity island. *PLoS Genet*. 2010; 6(8):e1001069. <https://doi.org/10.1371/journal.pgen.1001069> PMID: 20808891
29. Duncan SS, Valk PL, Shaffer CL, Bordenstein SR, Cover TL. J-Western forms of *Helicobacter pylori* *cagA* constitute a distinct phylogenetic group with a widespread geographic distribution. *J Bacteriol*. 2012; 194(6):1593–604. <https://doi.org/10.1128/JB.06340-11> PMID: 22247512
30. Hatakeyama M. Anthropological and clinical implications for the structural diversity of the *Helicobacter pylori* CagA oncoprotein. *Cancer Sci*. 2011; 102(1):36–43. <https://doi.org/10.1111/j.1349-7006.2010.01743.x> PMID: 20942897
31. Higashi H, Tsutsumi R, Fujita A, Yamazaki S, Asaka M, Azuma T, et al. Biological activity of the *Helicobacter pylori* virulence factor CagA is determined by variation in the tyrosine phosphorylation sites. *Proc Natl Acad Sci U S A*. 2002; 99(22):14428–33. <https://doi.org/10.1073/pnas.222375399> PMID: 12391297
32. Naito M, Yamazaki T, Tsutsumi R, Higashi H, Onoe K, Yamazaki S, et al. Influence of EPIYA-repeat polymorphism on the phosphorylation-dependent biological activity of *Helicobacter pylori* CagA. *Gastroenterology*. 2006; 130(4):1181–90. <https://doi.org/10.1053/j.gastro.2005.12.038> PMID: 16618412
33. Suzuki M, Kiga K, Kersulyte D, Cok J, Hooper CC, Mimuro H, et al. Attenuated CagA oncoprotein in *Helicobacter pylori* from Amerindians in Peruvian Amazon. *J Biol Chem*. 2011; 286(34):29964–72. <https://doi.org/10.1074/jbc.M111.263715> PMID: 21757722
34. McNulty SL, Mole BM, Dailidienne D, Segal I, Ally R, Mistry R, et al. Novel 180- and 480-base-pair insertions in African and African-American strains of *Helicobacter pylori*. *J Clin Microbiol*. 2004; 42(12):5658–63. <https://doi.org/10.1128/JCM.42.12.5658-5663.2004> PMID: 15583296
35. Snider CA, Voss BJ, McDonald WH, Cover TL. Growth phase-dependent composition of the *Helicobacter pylori* exoproteome. *J Proteomics*. 2015;(in press):Epub ahead of print Sept. 9, 2015.
36. Belogolova E, Bauer B, Pompaiah M, Asakura H, Brinkman V, Ertl C, et al. *Helicobacter pylori* outer membrane protein HopQ identified as a novel T4SS-associated virulence factor. *Cell Microbiol*. 2013; 15(11):1896–912. <https://doi.org/10.1111/cmi.12158> PMID: 23782461
37. Duncan SS, Valk PL, McClain MS, Shaffer CL, Metcalf JA, Bordenstein SR, et al. Comparative genomic analysis of East Asian and non-Asian *Helicobacter pylori* strains identifies rapidly evolving genes. *PLoS One*. 2013; 8(1):e55120. <https://doi.org/10.1371/journal.pone.0055120> PMID: 23383074
38. Kersulyte D, Kalia A, Gilman RH, Mendez M, Herrera P, Cabrera L, et al. *Helicobacter pylori* from Peruvian amerindians: traces of human migrations in strains from remote Amazon, and genome sequence of an Amerind strain. *PLoS ONE*. 2010; 5(11):e15076. <https://doi.org/10.1371/journal.pone.0015076> PMID: 21124785
39. Mane SP, Dominguez-Bello MG, Blaser MJ, Sobral BW, Hontecillas R, Skoneczka J, et al. Host-interactive genes in Amerindian *Helicobacter pylori* diverge from their Old World homologs and mediate inflammatory responses. *J Bacteriol*. 2010; 192(12):3078–92. <https://doi.org/10.1128/JB.00063-10> PMID: 20400544
40. Erbse A, Schmidt R, Bornemann T, Schneider-Mergener J, Mogk A, Zahn R, et al. ClpS is an essential component of the N-end rule pathway in *Escherichia coli*. *Nature*. 2006; 439(7077):753–6. <https://doi.org/10.1038/nature04412> PMID: 16467841
41. Chiou PY, Luo CH, Chang KC, Lin NT. Maintenance of the cell morphology by MinC in *Helicobacter pylori*. *PLoS One*. 2013; 8(8):e71208. <https://doi.org/10.1371/journal.pone.0071208> PMID: 23936493
42. McDonald JH, Kreitman M. Adaptive protein evolution at the *Adh* locus in *Drosophila*. *Nature*. 1991; 351(6328):652–4. <https://doi.org/10.1038/351652a0> PMID: 1904993
43. Fischer W, Breithaupt U, Kern B, Smith SI, Spicher C, Haas R. A comprehensive analysis of *Helicobacter pylori* plasticity zones reveals that they are integrating conjugative elements with intermediate integration specificity. *BMC Genomics*. 2014; 15:310. <https://doi.org/10.1186/1471-2164-15-310> PMID: 24767410

44. Ogura M, Perez JC, Mittl PR, Lee HK, Dailide G, Tan S, et al. *Helicobacter pylori* evolution: lineage-specific adaptations in homologs of eukaryotic Sel1-like genes. *PLoS Comput Biol*. 2007; 3(8):e151. <https://doi.org/10.1371/journal.pcbi.0030151> PMID: 17696605
45. Kawai M, Furuta Y, Yahara K, Tsuru T, Oshima K, Handa N, et al. Evolution in an oncogenic bacterial species with extreme genome plasticity: *Helicobacter pylori* East Asian genomes. *BMC Microbiol*. 2011; 11:104. <https://doi.org/10.1186/1471-2180-11-104> PMID: 21575176
46. Thorell K, Yahara K, Berthenet E, Lawson DJ, Mikhail J, Kato I, et al. Rapid evolution of distinct *Helicobacter pylori* subpopulations in the Americas. *PLoS Genet*. 2017; 13(2):e1006546. <https://doi.org/10.1371/journal.pgen.1006546> PMID: 28231283
47. Montano V, Didelot X, Foll M, Linz B, Reinhardt R, Suerbaum S, et al. Worldwide Population Structure, Long-Term Demography, and Local Adaptation of *Helicobacter pylori*. *Genetics*. 2015; 200(3):947–63. <https://doi.org/10.1534/genetics.115.176404> PMID: 25995212
48. Yahara K, Furuta Y, Oshima K, Yoshida M, Azuma T, Hattori M, et al. Chromosome painting in silico in a bacterial species reveals fine population structure. *Mol Biol Evol*. 2013; 30(6):1454–64. <https://doi.org/10.1093/molbev/mst055> PMID: 23505045
49. Lu W, Wise MJ, Tay CY, Windsor HM, Marshall BJ, Peacock C, et al. Comparative analysis of the full genome of *Helicobacter pylori* isolate Sahul64 identifies genes of high divergence. *J Bacteriol*. 2014; 196(5):1073–83. <https://doi.org/10.1128/JB.01021-13> PMID: 24375107
50. Kumar N, Mariappan V, Baddam R, Lankapalli AK, Shaik S, Goh KL, et al. Comparative genomic analysis of *Helicobacter pylori* from Malaysia identifies three distinct lineages suggestive of differential evolution. *Nucleic Acids Res*. 2015; 43(1):324–35. <https://doi.org/10.1093/nar/gku1271> PMID: 25452339
51. Munoz-Ramirez ZY, Mendez-Tenorio A, Kato I, Bravo MM, Rizzato C, Thorell K, et al. Whole Genome Sequence and Phylogenetic Analysis Show *Helicobacter pylori* Strains from Latin America Have Followed a Unique Evolution Pathway. *Front Cell Infect Microbiol*. 2017; 7:50. <https://doi.org/10.3389/fcimb.2017.00050> PMID: 28293542
52. Gangwer KA, Shaffer CL, Suerbaum S, Lacy DB, Cover TL, Bordenstein SR. Molecular evolution of the *Helicobacter pylori* vacuolating toxin gene *vacA*. *J Bacteriol*. 2010; 192(23):6126–35. <https://doi.org/10.1128/JB.01081-10> PMID: 20870762
53. van Vliet AH. Use of pan-genome analysis for the identification of lineage-specific genes of *Helicobacter pylori*. *FEMS Microbiol Lett*. 2017; 364(2).
54. Secka O, Moodley Y, Antonio M, Berg DE, Tapgun M, Walton R, et al. Population genetic analyses of *Helicobacter pylori* isolates from Gambian adults and children. *PLoS One*. 2014; 9(10):e109466. <https://doi.org/10.1371/journal.pone.0109466> PMID: 25310300
55. McClain MS, Shaffer CL, Israel DA, Peek RM Jr., Cover TL. Genome sequence analysis of *Helicobacter pylori* strains associated with gastric ulceration and gastric cancer. *BMC Genomics*. 2009; 10:3. <https://doi.org/10.1186/1471-2164-10-3> PMID: 19123947
56. de Sablet T, Piazuolo MB, Shaffer CL, Schneider BG, Asim M, Chaturvedi R, et al. Phylogeographic origin of *Helicobacter pylori* is a determinant of gastric cancer risk. *Gut*. 2011; 60(9):1189–95. <https://doi.org/10.1136/gut.2010.234468> PMID: 21357593
57. Tamura K, Dudley J, Nei M, Kumar S. MEGA4: Molecular Evolutionary Genetics Analysis (MEGA) software version 4.0. *Mol Biol Evol*. 2007; 24(8):1596–9. <https://doi.org/10.1093/molbev/msm092> PMID: 17488738
58. Yao J, Lin H, Doddapaneni H, Civerolo EL. nWayComp: a genome-wide sequence comparison tool for multiple strains/species of phylogenetically related microorganisms. *In Silico Biol*. 2007; 7(2):195–200. PMID: 17688445
59. Edgar RC. MUSCLE: multiple sequence alignment with high accuracy and high throughput. *Nucleic Acids Res*. 2004; 32(5):1792–7. <https://doi.org/10.1093/nar/gkh340> PMID: 15034147
60. Egea R, Casillas S, Barbadilla A. Standard and generalized McDonald-Kreitman test: a website to detect selection by comparing different classes of DNA sites. *Nucleic Acids Res*. 2008; 36(Web Server issue):W157–62. <https://doi.org/10.1093/nar/gkn337> PMID: 18515345