

Antitumor activity of a newly developed monoclonal antibody against ROR1 in ovarian cancer cells

Zhengna Yin^{1,*}, Mengyun Gao^{1,*}, Sasa Chu², Yiping Su¹, Chunping Ye¹, Yiquan Wang³, Zhuanqin Pan⁴, Zhuming Wang⁵, Huilin Zhang¹, Hua Tong¹ and Jin Zhu⁶

¹Department of Obstetrics and Gynecology, Nanjing Maternity and Child Health Care Hospital, Obstetrics and Gynecology Hospital Affiliated to Nanjing Medical University, Nanjing 210004, China

²Department of Infectious Disease, Institute of Liver Disease, Nanjing Jingdu Hospital, Nanjing 210002, China

³Department of Traditional Chinese Internal Medicine, Longhua Hospital Affiliated to Shanghai University of Traditional Chinese Medicine, Shanghai 200071, China

⁴Department of Nursing, Gaoyou People's Hospital, Yangzhou 225600, China

⁵Department of Pathology, Chinese Ministry of Health-designated Key Laboratory of Antibody Technology, Nanjing Medical University, Nanjing 210029, China

⁶Huadong Medical Institute of Biotechniques, Nanjing 210002, China

*These authors have contributed equally to this work

Correspondence to: Hua Tong, **email:** thua8@163.com
Huilin Zhang, **email:** zhl068@163.com

Keywords: ROR1, monoclonal antibody production, chimeric antibody Fab, binding affinity, antitumor activity

Received: July 12, 2017

Accepted: August 29, 2017

Published: October 07, 2017

Copyright: Yin et al. This is an open-access article distributed under the terms of the Creative Commons Attribution License 3.0 (CC BY 3.0), which permits unrestricted use, distribution, and reproduction in any medium, provided the original author and source are credited.

ABSTRACT

Receptor-tyrosine-kinase-like Orphan Receptor 1 (ROR1) is a tyrosine-protein kinase transmembrane receptor and ROR1 overexpression is associated with a poor prognosis in various cancers, including ovarian cancer. Targeting of ROR1 has been evaluated as a novel cancer therapy strategy. This study developed a novel chimeric anti-ROR1 Fab antibody (named ROR1-cFab) and then assessed the antitumor activity of this antibody in ovarian cancer cells, an *in vitro* model of preclinical cancer therapy. A ROR1-cFab prokaryotic expression vector was constructed from positive fusion cells (splenocytes from mice with high ROR1 immune titers were fused with myeloma cells) after three rounds of sub-clone affinity screening. Then, a variety of assays were employed to assess the binding selectivity and specificity of ROR1-cFab to ROR1 protein. Furthermore, CCK8, flow cytometric apoptosis, wound healing, and Transwell migration assays were used to assess antitumor activity of this newly developed anti-ROR1 antibody in ovarian cancer cells. We demonstrated that ROR1-cFab could specifically bind to ROR1 protein and ROR1-positive ovarian cancer A2780 cells. Functional assays revealed that ROR1-cFab inhibited tumor cell proliferation and migration, as well as inducing apoptosis of ROR1-positive A2780 cells in a dose dependent manner. These effects were not observed in ROR1-negative lose386 cells. In conclusion, ROR1-cFab is a novel anti-ROR1 antibody with a high affinity to ROR1 protein and inhibitory effects on ROR1-positive cells. Future studies will determine whether the ROR1-cFab might be a promising candidate for treatment of ROR1-positive ovarian cancer.

INTRODUCTION

Receptor-tyrosine-kinase-like Orphan Receptor 1 (ROR1) is a tyrosine-protein kinase transmembrane receptor, which consists of FZ (frizzled), Ig-like C2-type (immunoglobulin-like), krigle, and protein kinase domains [1], and functions to regulate cell growth in the central nervous system during development [2, 3]. ROR1 has recently been shown to play an important role in metastasis [4]. Indeed, ROR1 expression was expressed in various human cancers [5–12] and considered as a biomarker for the prediction of the prognosis of various malignancies [7–9]. However, a recent study demonstrated that ROR1 protein is also expressed in certain healthy tissues, such as the parathyroid glands, pancreatic islets, esophagus, stomach, and duodenum [13]. Despite these findings, targeting of ROR1 has been suggested as a novel strategy for cancer therapy [14–17]. Indeed, as a family of proteins, receptor-tyrosine-kinases (RTKs) are known to participate in various cell functions, both physiologically and developmentally, such as cell proliferation, migration, survival, and differentiation [18–20]. Dysregulation of RTKs, including ROR1, has been demonstrated in various cancers and targeting of RTKs has served as a strategy for cancer treatment [21]. To target ROR1, a previous study reported that treatment of chronic lymphocytic leukemia (CLL) cells with monoclonal antibodies against ROR1 were able to induce apoptosis in tumor cells [22], while knockdown of ROR1 expression suppressed proliferation of lung adenocarcinoma cells [23]. In other malignancies, such as ovarian cancer, ROR1 has been shown to be highly expressed and may serve as a useful therapeutic target [14]. Indeed, targeting ROR1 suppressed both migration and invasion of epithelial ovarian cancer cells [24]. Inhibition of ROR1 expression using miR382 suppressed ovarian cancer cell migration and invasion by downregulating epithelial-mesenchymal transition [25]. Our previous study demonstrated that expression of ROR1 protein in ovarian cancer tissues was significantly higher than in normal ovary tissues and that ROR1 overexpression was associated with poor disease-free survival and overall survival [9].

To date, ovarian cancer remains the leading gynecological malignancy [26] with an increasing incidence and an overall poor survival rate. Despite noticeable improvement in early detection and treatment options, the majority of ovarian cancer patients are diagnosed at advanced stages of disease and often have a very poor prognosis [26]. Surgical approaches have been shown to cure early stage disease, however, platinum- and taxane-based drugs are most frequently used as first-line chemotherapy for advanced and unresectable ovarian cancers [27]. However, although ovarian cancer patients may initially well respond to these drugs or combinations, approximately 85% of these patients eventually relapse within a few years, including those who previously were

deemed to have a complete response to treatment [28–30]. Thus, the search for and identification of biomarkers for the early detection of ovarian cancer, as well as the development of novel strategies to effectively treat ovarian cancer.

In our study, we first generated a novel monoclonal anti-ROR1 antibody by isolating chimeric anti-ROR1 Fab fragments (ROR1-cFab) from positive fusion cells after three rounds of sub-clone affinity screening and evaluation of affinity and binding to ROR1 protein and to ROR1-positive ovarian cancer cells. We then utilized ovarian cancer cells as an *in vitro* model to assess antitumor activity of our generated antibody in human cancer cells.

RESULTS

Generation of chimeric monoclonal antibody ROR1-cFab

In this study, we first immunized mice with recombinant human ROR1 protein (Sino Biological Inc., Beijing, China) to isolate splenocytes with the highest immune ROR1 titers. These splenocytes were then fused with myeloma cells in order to screen for the positive fusion cell clones. Specifically, after three rounds of sub-clone affinity screening of myeloma hybrids, we obtained 40 positive fusion cell clones and then further analyzed using ELISA. Using the cut-off point of the ratio of sample versus the blank of more than four-fold we considered only these fused cell clones as candidates. Based on this, we determined 31 positive fusion cell clones and number 29 fusion cell clone was shown to possess the strongest binding ability to ROR1 protein (Figure 1A). We fully amplified five positive fused cell clones (#3, 13, 25, 29, and 31 fusion cells), analyzed and confirmed using DNA sequencing and then examined these against the VBASE2 database. We found that the light chain of the antibody was confirmed to be the kappa chain. Next, the V_L and V_H of positive clones were amplified and the length of V_L , V_H and C_H1 were approximately 400 bp of each. Similarly, the length of C_L obtained was approximately 350 bp (Figure 1B, 1C). After, we amplified the heavy chain Fd (800 bp) and the light chain L (750 bp) by using the overlap extension PCR according to a previous study [33]. DNA sequencing analysis verified that the Fd and L fragments were successfully inserted into the prokaryotic expression plasmid pETDuet-1 without any mutations (Figure 1D, 1E). Thus, we successfully constructed a prokaryotic expression vector carrying chimeric anti-ROR1 monoclonal Fab fragment (pETDuet-ROR1-cFab).

After *in vitro* analysis and Coomassie blue staining of the SDS-PAGE gel, the positive protein band was approximately 27 kDa, but due to the similar size, it was difficult for us to distinguish the Fd from the L band on the SDS-PAGE gel (Figure 1F). We thus performed a Western blot analysis using an antibody against the Fab fragments

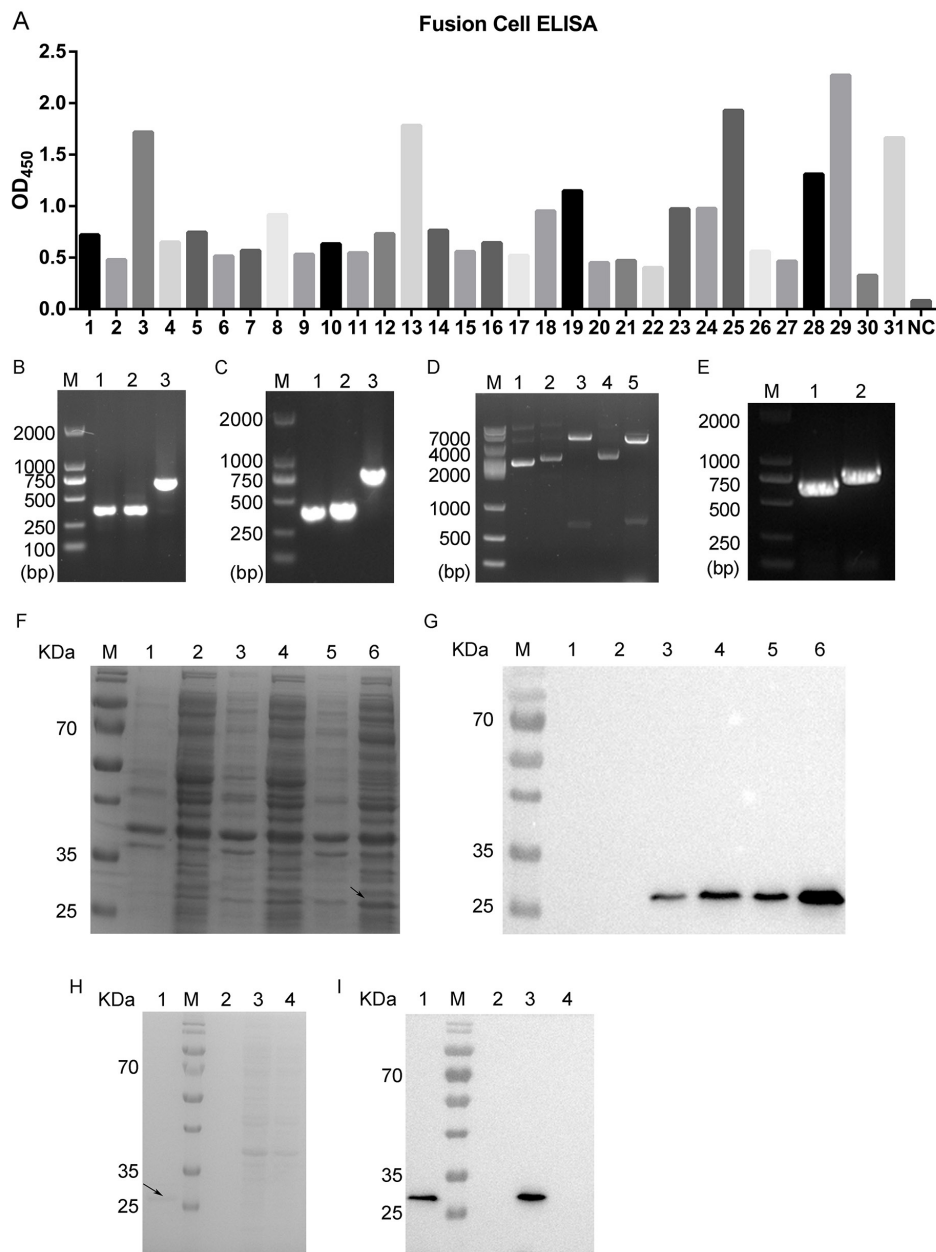


Figure 1: Screening and identification of positive fusion cell clones and generation of chimeric monoclonal antibody ROR1-cFab. (A) ELISA. ELISA was performed to screen 31 candidate fusion cell clones after three rounds of sub-clone screening. NC, a negative control. (B) Agarose gels of PCR amplification of the light chain. Lane 1, V_L; Lane 2, C_L; Lane 3, V_L combined with C_L; M, a DNA maker. (C) Agarose gels of PCR amplification of the heavy chain. Lane 1, V_H; Lane 2, C_H1; Lane 3, V_H combined with C_H1; M, a DNA maker. (D) Agarose gels of PCR amplification of pETDuet-ROR1-cFab. Lane 1, the plasmid of pETDuet without restriction endonuclease digestion; Lane 2, the plasmid of pETDuet-L; Lane 3, NcoI/HindIII were used for double digesting the pETDuet-L plasmid; Lane 4, the plasmid of pETDuet-L-H (pETDuet-ROR1-cFab); Lane 5, NdeI/kpnI were used for double digestion of the pETDuet-ROR1-cFab plasmid; M, a DNA marker. (E) Agarose gels of PCR amplification of the light and heavy chain of pETDuet-ROR1-cFab. Lane 1, L; Lane 2, Fd; M, a DNA maker. (F) Coomassie blue staining of a SDS-PAGE gel and (G) Western blot. Detection of expression of the Fab fragment in *E. coli*. Lane 1, supernatant of sonicated lysate of untransfected *E. coli* BL21, a negative control; Lane 2, sediment of sonicated lysate of untransfected *E. coli* BL21, a negative control; Lane 3, supernatant of sonicated lysate of pETDuet-ROR1-cFab-transfected *E. coli*; Lane 4, sediment of sonicated lysate of pETDuet-ROR1-cFab-transfected *E. coli*; Lane 5, supernatant of sonicated lysate of pETDuet-ROR1-cFab-transfected *E. coli* induced by IPTG overnight; Lane 6, sediment of sonicated lysate of pETDuet-ROR1-cFab-transfected *E. coli* induced by IPTG overnight; M, a protein marker. (H) Coomassie blue staining and (I) Western blot. Detection of the purification efficiency of the Fab fragments. Lane 1, the Fab fragments was purified by the Protein L affinity column; lane 2, sediment of sonicated lysate of pETDuet-ROR1-cFab-transfected *E. coli* induced by IPTG overnight; lane 3, supernatant of sonicated lysate of pETDuet-ROR1-cFab-transfected *E. coli* induced by IPTG overnight; lane 4, the flow through the Protein L affinity column; M, a protein marker.

and found that the chimeric monoclonal antibody ROR1-cFab was mostly secreted in the ultrasonic supernatant but not in the ultrasonic sediment (Figure 1G).

Furthermore, considering the light chain of the Fab fragments was a kappa chain, we employed a protein L affinity column to purify the chimeric anti-ROR1 Fab fragments (ROR1-cFab) from the ultrasonic supernatant of the *E. coli* BL21 that was transformed by pETDuet-ROR1-cFab. We achieved approximately 95% purification efficiency for the Fab fragments, resulting in 900µg/mL of ROR1-cFab (Figure 1H, 1I).

Verification of chimeric monoclonal antibody ROR1-cFab specifically binding to ROR1

We assessed whether ROR1-cFab can specifically and selectively bind to human ROR1 protein using the ELISA. We first made gradient dilutions (between 20 and 0.078 µg/mL) of ROR1-cFab for ELISA and utilized a commercial anti-ROR1 antibody as the positive control and found that the ROR1-cFab specifically bound to ROR1 protein in a dose-dependent manner (Figure 2A). We further determined the binding capacity of ROR1-cFab to ROR1 protein by calculating the affinity constant that reflected the antigen-antibody reaction using the following formula: Affinity constant (KD) = dissociation constant (Kd) ÷ binding constant (Ka) according to a previous study [34]. Data from Biacore X100 SPR analysis showed that an affinity constant of ROR1-cFab of 3.233×10^{-8} (Figure 2B). This finding indicated that ROR1-cFab could selectively and effectively bind to the ROR1 antigen.

In addition, we performed Western blot to determine the level of ROR1 protein in ovarian cancer A2780 and Iose386 cell lines. As shown in Figure 3A, A2780, a ROR1-positive cell line, displayed ROR1 expression, whereas Iose386, a ROR1-negative cell line, showed no expression when the ROR1-cFab was used as an antibody for Western blotting. Moreover, we also performed flow cytometry to further analyze the binding ability of ROR1-cFab to ROR1-positive A2780 cells and Iose386 cells used as a negative control. We found that ROR1-cFab-treated A2780 cells were isolated from untreated cells, but there was no apparent difference in ROR1-cFab-treated and untreated Iose386 cells (Figure 3B), suggesting that ROR1-cFab was able to selectively bind to ROR1-positive cells, but not to ROR1-negative cells.

Again, we performed immunofluorescence to visualize whether ROR1-cFab can intuitively bind to the cell surface. Our data revealed that ROR1-cFab-immunostained A2780 cells were visualized under a fluorescence microscope but staining was not visualized on ROR1-negative Iose386 cells (Figure 3C). Taken together, these results suggested that ROR1-cFab possesses a high affinity and specificity for ROR1.

Inhibition of ovarian cancer cell malignant behaviors by the chimeric monoclonal antibody ROR1-cFab *in vitro*

After obtaining and verifying the properties of ROR1-cFab, we assessed its antitumor activity in ovarian cancer cell lines. We first assessed the effect of ROR1-

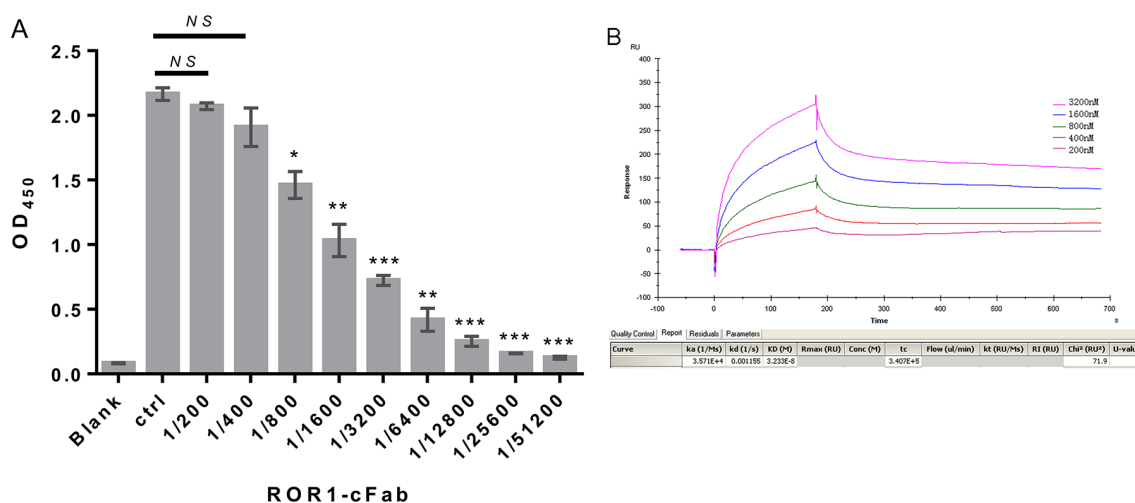


Figure 2: Confirmation of ROR1-cFab specificity and selectivity. (A) ELISA. A 96-well plate was pre-coated with recombinant human ROR1 protein at a concentration of 50 ng/well. Serial dilutions of the ROR1-cFab were used as the first antibody for ELISA and the HRP-conjugated goat anti-human antibody (Fab specific) was used as the secondary antibody. Commercial anti-ROR1 antibody was used as a positive control (Ctrl). The absorbance was read at 450 nm after color development. (B) Surface Plasmon resonance (SPR) analysis. The ROR1 protein was diluted to 30 µg/mL in dilution buffer and then reacted in a running buffer containing serial concentrations of ROR1-cFab. Results were analyzed by the Biacore X100 software. The experiments were in triplicate and repeated at least twice. Data are shown as mean ± SD (n = 2, NS, not significant, *p < 0.05, **p < 0.01, and ***p < 0.001 compared with the control).

cFab on the regulation of tumor cell viability using the CCK8 assay. In A2780 cells, when the concentration of ROR1-cFab reached to 10 $\mu\text{g/mL}$, the inhibition efficiency increased at 24 h, but decreased at 48 h and 72 h; when the concentration of ROR1-cFab was 20 $\mu\text{g/mL}$, the inhibition efficiency was increased at 24 h, decreased at 48h but increased again at 72 h; data also showed that when the concentration of ROR1-cFab was 40 and 80 $\mu\text{g/mL}$, respectively, the inhibition efficiency was increased in a time-dependent manner (approximately 50% at 40 $\mu\text{g/mL}$ at 72 h and approximately 67% at 80 $\mu\text{g/mL}$ at 72h; Figure 4A, 4B). Thus, we chose an incubation concentration of ROR1-cFab of 40 $\mu\text{g/mL}$ in the following experiments.

Furthermore, a tumor cell wound healing assay showed that ROR1-cFab blocked tumor cell migration; migration capacities were 0.00%, 6.98%, and 23.26% after incubation with 40 $\mu\text{g/mL}$ ROR1-cFab for 0, 24, and 48 h, respectively, compared with PBS-treated A2780 cells (0.00%, 22.33% and 53.49%, respectively; Figure 5A). However, suppression of cell migration by ROR1-cFab was not apparent when Iose386 cells were used in the assay (0.00%, 32.81% and 56.52%, respectively), as compared with PBS-treated cells (0.00%, 32.13% and 56.68%, respectively; Figure 5A). In addition, we conducted a tumor cell Transwell migration assay to further investigate the effect of ROR1-cFab on ovarian cancer cells *in vitro*. Our data showed that ROR1-

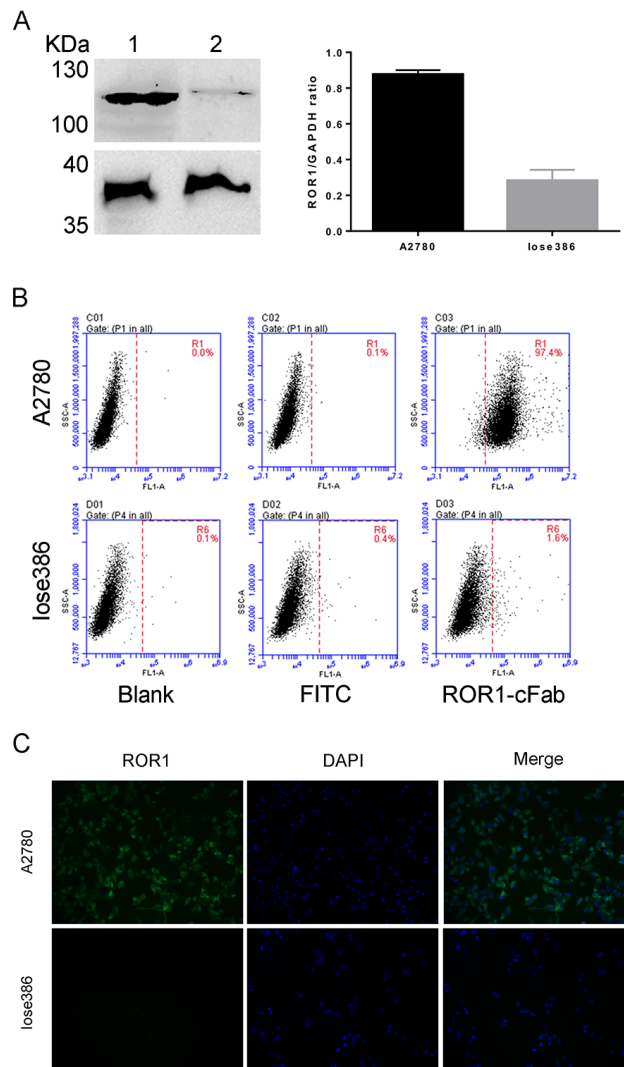


Figure 3: Assessment of the ROR1-cFab specificity in ovarian cancer cells. (A) Western blot. It detected the level of ROR1 expression in ovarian cancer cells. Lane 1: supernatant of A2780 cell lysate; Lane 2: supernatant of Iose386 cell lysate. **(B)** Flow cytometry. Ovarian cancer A2780 and Iose386 cells were treated with or without ROR1-cFab for 1h and then incubated with a goat anti-human IgG (Fab specific)-FITC antibody for 1 h in the dark. The cells were then subjected to flow cytometry analysis of fluorescence intensity. **(C)** Immunofluorescence staining of ROR1. Ovarian cancer cells (A2780 and Iose386) were first grown and immunostained with ROR1-cFab. The experiments were in triplicate and repeated at least once.

cFab significantly reduced migration of A2780 cells by approximately 81.4% after incubation with 40 $\mu\text{g}/\text{mL}$ ROR1-cFab for 24 h. Treatment of Iose386 cells with the same concentration of ROR1-cFab did not reduce migration (Figure 5B). Thus, our results implied that the ROR1-cFab could effectively inhibit tumor cell migration in a time-dependent manner.

Next, we assessed the pro-apoptotic effect of the ROR1-cFab on ovarian cancer cells using flow cytometric Annexin V-FITC/PI apoptosis assay. We found that continuous exposure to ROR1-cFab resulted in an increased rate of apoptosis of A2780 cells with 12.7% for 2 h, 17.8% for 6 h and 35.5% for 24 h. These effects were not apparent in Iose386 cells (Figure 6). Taken together, our current study revealed that ROR1-cFab could effectively reduce malignant behavior of ovarian cancer A2780, but not Iose386 cells, indicating that ROR1 is the *in vitro* target of ROR1-cFab antibody.

DISCUSSION

In the current study, we produced a novel chimeric monoclonal Fab antibody against human ROR1 protein using an *in vitro* protein expression and cell fusion technique for the generation of a monoclonal antibody. We

then assessed antitumor effects of the generation antibody, ROR1-cFab, on ovarian cancer cell lines. We found that: 1) ROR1-cFab possesses a high affinity and specificity for ROR1 and 2) ROR1-cFab was able to effectively reduce malignant behaviors of ROR1-positive ovarian cancer A2780 cells, but not in ROR1-negative Iose386 cells *in vitro*. Our future studies will further verify the antitumor activity in ovarian cancer *in vivo*.

Different DNA recombination technologies are useful to develop and generate human antibodies, which are widely applied for both the diagnosis and treatment of various diseases. Among them, cell fusion technology has the advantages of both high efficiency and selectivity. Previous studies have reported the successful development and production of chimeric monoclonal antibodies using this methodology [35–38]. Chimeric monoclonal antibodies contain IgG and Fab fragments and these fragments possess a high validity to translocate into targeted tissues or cells with a high concentration and efficiency.

In the current study, we combined cell fusion and *in vitro* construction of ROR1-cFab fragments to separate a chimeric anti-ROR1 monoclonal Fab (ROR1-cFab) to identify and recognize recombinant ROR1 protein. This approach was performed by repeated screening

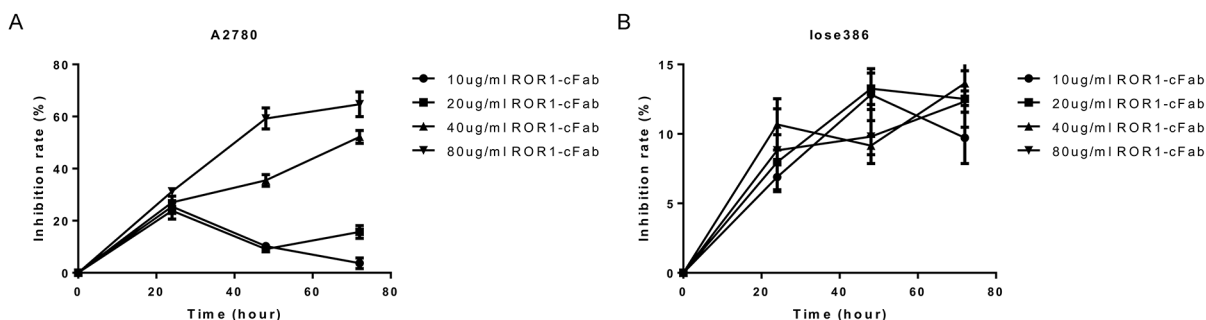


Figure 4: Cell viability CCK8 assay. (A) A2780 cells and (B) Iose386 cells were grown and treated with different doses of ROR1-cFab for up to 72 h and then subjected to CCK8 assay.

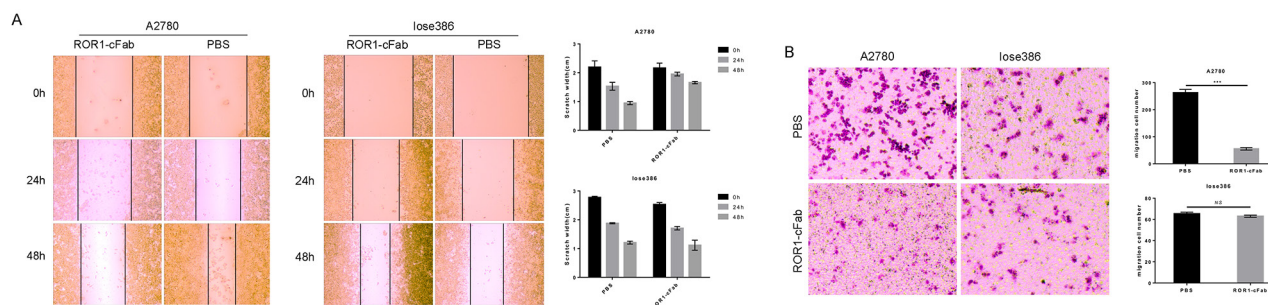


Figure 5: Antitumor activity of ROR1-cFab in ovarian cancer cells. (A) Wound healing assay. Tumor cells were grown and treated with 40 $\mu\text{g}/\text{mL}$ of ROR1-cFab for up to 48 h and then subjected to wound healing assay. (B) Transwell migration assay. Tumor cells were grown and treated with 40 $\mu\text{g}/\text{mL}$ of ROR1-cFab for up to 24h and then subjected to Transwell migration assay. Data are shown as mean \pm SD (n = 3, NS, not significant, * $p < 0.05$, ** $p < 0.01$, and *** $p < 0.001$ compared with the control).

with pre-coated recombinant human ROR1 protein in 96-well plates to guarantee the efficiency of specific ROR1 binding. After three rounds of sub-clone affinity screening, we selected five positive fusion cell clones from a total of 31 candidate clones with a strong ELISA positive signal and specificity to bind to ROR1 protein antigen. In parallel, we also successfully constructed the prokaryotic expression vector pETDuet-ROR1-cFab and expressed and verified the two different heavy and light chains of fragments in order to ensure the production of a stable Fab antibody. A previous study showed that such an approach is reliable and efficient [39]. We then evaluated and verified adequate expression and purification of ROR1-cFab using SDS-PAGE gels for Coomassie blue staining and Western blotting. To examine the specificity and selectivity of this antibody, we employed other techniques such as ELISA, affinity analysis, FACS, and immunofluorescence staining to determine the binding capacity of ROR1-cFab to recombinant human ROR1 antigen and ROR1 protein on the surface of ovarian cancer cells. Therefore, our current results illustrated that such an antibody engineering process did not affect or alter the specificity of this chimeric anti-ROR1 Fab.

Furthermore, we assessed the antitumor activity of this ROR1-cFab in ovarian cancer cells, our *in vitro* model of preclinical cancer therapy. In this model, we selected two ovarian cancer cell lines – both ROR1-positive and negative cell lines – allowing us to further explore the specificity and selectivity of ROR1-cFab. Our cell viability CCK8 data demonstrated that if the ROR1-cFab concentration was equal or greater than 40µg/mL, ROR1-cFab treatment was able to efficiently reduce the viability of ROR1-positive ovarian cancer cells in a time-dependent manner. Our wound healing and Transwell migration assays revealed significant inhibition of migration ability of ROR1-positive ovarian cancer cells at a dose of 40µg/mL ROR1-cFab for 24 or 48h. Furthermore, an Annexin V-FITC/PI apoptosis assay demonstrated that ROR1-cFab also induced apoptosis of ROR1-positive A2780 cells in a time-dependent manner. However, ROR1-negative

ovarian cancer lose386 cells failed to undergo apoptosis upon treatment with ROR1-cFab. Thus, these data clearly indicate that ROR1-cFab can selectively and specifically block functions of ROR1 in ovarian cancer cells and effectively reduce tumor cell malignant behaviors. In future studies, we aim to examine the *in vivo* effects of ROR1-cFab.

Previous studies have demonstrated that ROR1 antibody or knockdown of ROR1 expression can effectively reduce proliferation of various types of cancer cells, such as chronic lymphocytic leukemia (CLL) cells, ovarian cancer cells, and lung adenocarcinoma cells [22–24]. Molecularly, a previous study also highlighted that miR-27b-3p could activate cell proliferation, regulate colony formation and promote tumorigenicity by targeting ROR1 in gastric cancer cells [40]. Further data showed the c-Src/STAT3 signaling pathway may be involved in miR-27b-3p-ROR1-mediated tumor cell proliferation [40]. Another previous study demonstrated that STAT3 may bind to the ROR1 promoter region after constitutive STAT3 phosphorylation and activation [41], while other studies have shown that Wnt5a signaling might be one of the ligands proving to induce ROR1 expression [5, 42, 43]. In addition, it has also been reported that ROR1 may form a complex with TCL1, in order to activate AKT and in turn to induce expression of cell growth-related genes and reduce expression of apoptosis-related genes [44]. However, the underlying mechanisms responsible for ROR1 action and promotion of ovarian cancer malignant phenotypes remain to be defined, which is also a limitation to our current study. Our current study is a proof-of-principle approach to assess the antitumor activity of the generated ROR1 antibody. So there are some limitations in the current study; for example, we have had a ROR1-negative cell line as a control, but we should have also used normal ovarian epithelial cells as a control since ROR1 could be expression at a low level in some normal cells; thus, such a cell line could be used as control of this antibody-induced cell toxicities.

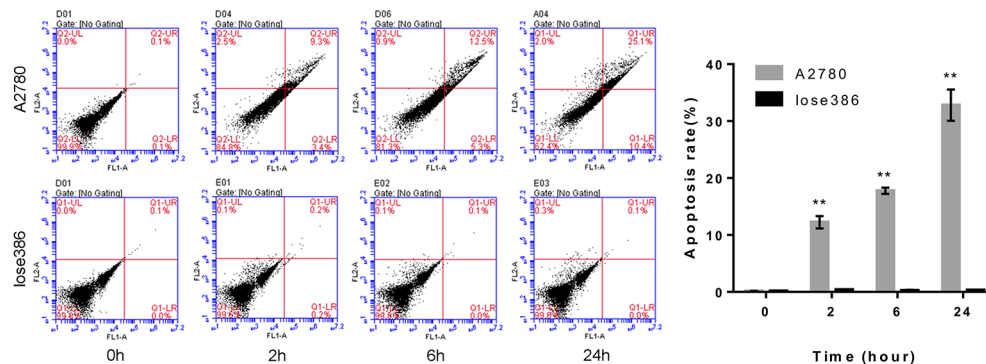


Figure 6: Flow cytometric apoptosis assay. Tumor cells were grown and treated with 40 µg/mL of ROR1-cFab for up to 24h and then subjected to flow cytometric apoptosis assay. As a ROR1-negative cell line, Iose386 showed no difference in these assays. Data are shown as mean ± SD (n = 3, NS, not significant, *p < 0.05, **p < 0.01, and ***p < 0.001 compared with the 0h group).

Table 1: Primers used for the construction of the ROR1-cFab gene

Primer name	DNA sequence
Heavy chain variable region forward primer	
V _H F1	GCTGCCCAACCAGCCATGGCCCAGGTGCAGCTGGTGCAGTCTGG
V _H F2	GCTGCCCAACCAGCCATGGCCCAGATCACCTTGAAGGAGTCTGG
V _H F3	GCTGCCCAACCAGCCATGGCCGAGGTGCAGCTGGTGSAGTCTGG
V _H F4	GCTGCCCAACCAGCCATGGCCGAGGTGCAGCTGKTGGAGTCTG
V _H F5	GCTGCCCAACCAGCCATGGCCCAGGTGCAGCTGCAGGAGTCGGG
V _H F6	GCTGCCCAACCAGCCATGGCCCAGGTGCAGCTACAGCAGTGGGG
Heavy chain variable region reverse primer	
V _H R1	CGATGGGCCCTTGGTGGAGGCTGAGGAGACGGTGACCAGGGTTCC
V _H R2	CGATGGGCCCTTGGTGGAGGCWGRGGAGACGGTGACCAGGGTBCC
Light chain variable region forward primer	
V _L F1	GGGCCAGGCGGCCGAGCTCCAGATGACCCAGTCTCC
V _L F2	GGGCCAGGCGGCCGAGCTCGTGATGACYCAGTCTCC
V _L F3	GGGCCAGGCGGCCGAGCTCGTGWGACRCAGTCTCC
V _L F4	GGGCCAGGCGGCCGAGCTCACACTCACGCAGTCTCC
Light chain variable region reverse primer	
V _L R1	GAAGACAGATGGTGCAGCCACAGT
Heavy chain variable region primer	
HF1	CATATGCAGGTGCAGCTGGTGCAGTCTG
HR1	TGGGCCCTTGGTGGAGGCGGAGACGGTGACCAGGGTTC
Light chain variable region primer	
LF1	CCATGGGCGAGCTCGTGATGACCCAG
LR1	CAGCCTTGGGCTGACCTTTTATTTCCAACCTTTGTC
Constant region C _H 1 primer	
HF2	GAACCCTGGTCACCGTCTCCGCTCCACCAAGGGCCCA
HR2	GGTACCTTAAGAAGCGTAGTCCGGAAC
Constant region C _L primer	
LF2	GACAAAGTTGAAATAAAAGGTCAGCCCAAGGCTG
LR2	AAGCTTTTATGAACATTCTGTAGGGGCCACT
Heavy chain primer	
HF1	CATATGCAGGTGCAGCTGGTGCAGTCTG
HR2	GGTACCTTAAGAAGCGTAGTCCGGAAC
Light chain primer	
LF1	CCATGGGCGAGCTCGTGATGACCCAG
LR2	AAGCTTTTATGAACATTCTGTAGGGGCCACT

Moreover, in future studies, we will investigate the potential mechanisms and biological behavior of ROR1 in ovarian cancer *in vivo*.

In conclusion, in our current study, we successfully developed and produced a chimeric anti-ROR1 monoclonal Fab antibody (ROR1-cFab), which could selectively and

specifically bind to ROR1 protein with a high affinity. We also demonstrated that ROR1-cFab was able to specifically inhibit ovarian cancer cell growth and induce apoptosis in ROR1 expressing cells, suggesting that this antibody could be further investigated as an appropriate and promising therapeutic strategy for ROR1-positive human cancers.

MATERIALS AND METHODS

Animals and immunization with ROR1 protein

Our animal study protocol was approved by the Ethics Committee of Nanjing Medical University, China, and we strictly followed the Guiding Principles of the Animal Care and Use of Nanjing Medical University, China. Eight-week-old female BALB/c mice were purchased from SLRC Laboratory Animals (Shanghai, China) and maintained in three animals per cage and received food and water *ad libitum* in Nanjing Medical University Experimental Animal Center (Nanjing, China) with thick sawdust bedding at standard room temperature ($22 \pm 2^\circ\text{C}$), under conditions of a 12/12-hr reversed light-dark cycle (7:00 am-7:00 pm). Mice were acclimatized to the laboratory environment for 3–5 days before our experiments.

Three female mice were subcutaneously immunized with soluble recombinant human ROR1 protein (50 μg per mouse) emulsified with complete Freund's adjuvant (Sigma Chemicals, St. Louis, MO, USA). Recombinant human ROR1 protein (ECD, His Tag) was purchased from Sino Biological Inc. (Beijing, China). Two weeks later, mice were treated with an intraperitoneal injection of ROR1 protein emulsified with incomplete Freund's adjuvant (Sigma Chemicals, St. Louis, MO, USA) for the second immunization. After two weeks, mice were subcutaneously injected with the same formulation of ROR1 protein for the third immunization. Two weeks later, sera from these mice were collected to determine the level of ROR1 protein immunity.

Cell fusion and screening of positive fused cell clones

Splenocytes from the mice with the highest immune titers of ROR1 antibodies were collected and fused with myeloma cells (detailed below) using Polyethylene Glycol 1500 (PEG 1500; Roche, Indianapolis, IN, USA). Fused cells were then seeded in 96-well plates and cultured in Dulbecco's Modified Eagle's Medium (DMEM, GIBCO BRL, Gaithersburg, MD, USA) supplemented with 10% fetal bovine serum (FBS; GIBCO BRL), 1% penicillin (100 U/mL) and 1% streptomycin (GIBCO BRL) for approximately 11 days. Following this, 50 μL supernatant from each well with replicating fused cells was collected and added into a fresh 96-well plate that was pre-coated

with 50 ng recombinant human ROR1 protein (Sino Biological Inc., Beijing, China). After incubation for 1h at room temperature and washing three times in PBS-Tween 20 (PBST), 50 μL of horseradish-peroxidase (HRP)-conjugated rabbit anti-mouse IgG antibody (Sigma Chemicals, St. Louis, MO, USA) solution was added into each well at a dilution of 1:5,000 in blocking buffer and plates were incubated for 1h and subsequently measured with a spectrophotometer (Thermo Electron Corporation, MA, USA) at 450 nm. Fusion cells with high immune titers were picked up and subjected to three rounds of sub-clone affinity screening. Positive fusion cell clones were then selected and assessed.

Construction of an expression vector for chimeric monoclonal antibody ROR1-cFab

Total RNA was isolated from positive fusion cell clones after three rounds of sub-clone affinity screening using Trizol reagent (Invitrogen, Carlsbad, CA, USA) and reversed transcribed into cDNA using Prime Script RT reagent (TaKaRa, Shiga, Japan) according to the manufacturers' instructions [31]. Resulting cDNA samples were saved as templates in order to PCR amplify the variable regions of the heavy chain (V_H) and the light chain (V_L) with degenerate primers (Table 1). PCR products were purified with the Wizard SV Gel and PCR Clean-Up System (Promega, Madison, WI, USA) and then cloned into pMD-18T vectors, respectively. After amplification and DNA sequence confirmation, pMD-18T vectors carrying different V_H and V_L were analyzed using the VBASE2 database (<http://www.vbase2.org/>). Additionally, the human conserved regions of the heavy chain (C_H1) and the light chain (C_L) were acquired from the Barbas laboratory (Scripps Research Institute, San Diego, CA, USA) and after DNA sequence confirmation, they were combined with our newly cloned V_H and V_L , respectively. The newly formed V_H - C_H1 and V_L - C_L were used as templates for PCR amplification with HF1, HR2, and LF1, LR2, respectively, to obtain the heavy chain Fd and the light chain L. After amplification and DNA sequence confirmation, purified Fd and L were finally cloned into pETDuet-1 at NdeI/kpnI and NcoI/HindIII sites, respectively.

Expression and purification of chimeric monoclonal antibody ROR1-cFab

The pETDuet-1 carrying the heavy chain Fd and the light chain L were transformed into *E. coli* BL21 (TRANS, Beijing, China) and *E. coli* were induced at 16 or 37°C with 1mmol/L isopropyl β -D-thiogalactopyranoside (IPTG) overnight. We found that recombinant *E. coli* had higher expression levels of Fab fragments at 16°C than that at 37°C (data not shown). Thus, a single clone was then inoculated in LB medium supplemented with

100 µg/mL ampicillin and stimulated by 1 mmol/L isopropyl β-D-thiogalactopyranoside (IPTG) at 16°C for 12h. After ultrasonic cytolysis and centrifugation, soluble ROR1-cFab in the supernatant was separated and purified using Protein L affinity column from GE Healthcare (Piscataway, NJ, USA) according to the manufacturer's instructions. The bacteria lysate, sonicated supernatant, and the ROR1-cFab protein were dissociated in 10% sodium dodecyl sulfate-polyacrylamide gel electrophoresis (SDS-PAGE) gel and stained with Coomassie blue and analyzed using Western blotting, respectively.

Western blot

Expression of ROR1-cFab in *E. coli* BL21 was analyzed by using Western blotting as described previously [32]. In brief, proteins from *E. coli* were purified with Protein L affinity column from GE Healthcare, the concentration of which was measured using the bicinchoninic acid protein assay kit (Thermo, Waltham, MA, USA). Protein samples were then dissociated in 10% SDS-PAGE gels and transferred onto nitrocellulose membranes (Bio-Rad, Hercules, CA, USA). For Western blotting, membranes were incubated in 5% non-fat milk in Tris-based saline-Tween 20 (TBS-T) for 2h at the room temperature and then with horseradish peroxidase (HRP)-conjugated goat anti-human Fab specific antibody (Santa Cruz Biotechnology, Santa Cruz, CA, USA) at a dilution of 1:1000 for 1 h at the room temperature. Similarly, ROR1 expression was analyzed using Western blot with our newly developed anti-ROR1 antibody in ovarian cancer cell lines (A2780 and Iose386).

Enzyme-linked immunosorbent assay (ELISA)

Non-competitive ELISA was employed to identify the affinity of ROR1-cFab. Briefly, serial dilutions of ROR1-cFab were added into 96-well plates that were pre-coated with 50 ng recombinant human ROR1 protein (Sino Biological Inc., Beijing, China) per well. After incubation and washing with PBST, HRP-conjugated goat anti-human Fab specific antibody (Santa Cruz Biotechnology, Santa Cruz, CA, USA) was added into each well of the plates, while a commercial anti-human ROR1 antibody (Abcam, Cambridge, MA, USA) was used as a positive control. The absorbance value at 450 nm was then detected using a spectrophotometer (Thermo Electron Corporation).

Surface plasmonresonance (SPR) analysis of chimeric monoclonal antibody ROR1-cFab

The binding affinity of the antibody was also analyzed by the Biacore X100 SPR system (GE Health, Sweden). We followed the isoelectric point of the ROR1 protein and the optimization of coupling conditions provided by the manufacturer to select sodium acetate

as the dilution buffer for the assay. After dilution to 30 µg/mL, the ROR1 protein was coupled to the CM5 chip and the coupling level was preset at 1,500 RU, while the injection time was preset to 180 s and the dissociation time was preset to 15 min. We used 50 mM Gly-HCl (pH 1.7) as the regeneration buffer. The ROR1 protein reacted with the serial concentrations of ROR1-cFab, which was determined using the Biacore X100 SPR system as the binding affinity of the antibodies.

Cell lines and culture

A human serous cystic adenocarcinoma ovarian cancer cell line A2780 and human ovarian epithelial cell line Iose386 were obtained from The Cell Bank of Chinese Academy of Sciences (Shanghai, China). Mouse myeloma cells were conserved by our laboratory. Iose386 cells were cultured in RPMI-1640 (GIBCO BRL, Gaithersburg, MD, USA), while A2780 and mouse myeloma cells were cultured in DMEM (GIBCO BRL, Gaithersburg, MD, USA) and both were supplemented with 10% FBS (GIBCO BRL), 1% penicillin (100 U/mL) and 1% streptomycin (100 µg/mL) in a humidified atmosphere with 5% CO₂ at 37°C.

Fluorescence-activated cell sorting (FACS)

Ovarian cancer A2780 and Iose386 cell lines were incubated with the ROR1-cFab for 1h and then incubated with a goat anti-human IgG (Fab specific)-FITC antibody (Sigma Chemicals, St. Louis, MO, USA) for 1 h. After being washed in PBS, the fluorescence intensity of cells was detected by the LSRII flow cytometer (BD Biosciences, San Jose, CA, USA).

Immunofluorescence assay

Ovarian cancer A2780 and Iose386 cell lines were seeded into 6- well plates and grown to reach approximately 80% confluency. Next, cells were fixed in 4% paraformaldehyde and subsequently blocked in 5% non-fat milk for 1 h and then with the ROR1-cFab for 1 h at the room temperature and further with a goat anti-human IgG (Fab specific)-FITC antibody (Sigma Chemicals, St. Louis, MO, USA) for 1 h. 4'-6-diamidino-2-phenylindole (DAPI, Biotium, Hayward, CA, USA) was used to stain cell nuclei. Cells were analyzed under a fluorescence microscope (Zeiss, Jena, Germany).

Cell viability CCK8 assay

The changed cell viability after treatment with our newly developed anti-ROR1 antibody was assayed using the CCK8 Kit (Dojindo, Rockville, MD, USA). In brief, ovarian cancer A2780 and Iose386 cell lines were seeded into a 96-well plate in triplicate and then treated with serial concentrations of our newly-developed anti-ROR1 antibody for 24 h, 48 h, or 72 h. After, cell cultures were

treated with the CCK8 reagent and further cultured for 2 h. The optical density at 450 nm was measured with a spectrophotometer (Thermo Electron Corporation, MA, USA). The percentage of the control samples of each cell line was calculated thereafter.

Tumor cell wound healing assay

Ovarian cancer A2780 and Iose386 cell lines were seeded into 24-well plates and grown to reach to 90% confluency. A scratch was then made across a monolayer of cells using a 200 μ L pipette tip and treated with 40 μ g/mL ROR1-cFab for 0, 24, and 48 h. Image Pro Plus software was employed to calculate wound closing rate according to the following formula: $n\ h$ (n hour) migration rate = (the distance from the edge of the 0 h - the distance from the edge of the n h) / the distance from the edge of the 0 h.

Tumor cell transwell migration assay

To evaluate cell migration capacity, ovarian cancer A2780 and Iose386 cell lines were seeded into Transwell inserts (Corning Life Sciences, Tewksbury, MA, USA) at a density of 4×10^4 cells/well and treated with 40 μ g/mL ROR1-cFab. The bottom of the Transwell was filled with 10% FBS and Transwell plates were cultured for 24 h. At the end of each experiment, cells remaining at the top surface of the Transwell inserts were removed using cotton swabs, whereas cells which migrated onto the inverse side of the Transwell inserts were fixed with 4% paraformaldehyde and subsequently stained with 0.1% crystal violet stain (Sigma Chemicals, St. Louis, MO, USA) and counted for five randomly-selected fields under an inverted microscope (Olympus, Tokyo, Japan). The mean migration rate was calculated for % of control in each cell line.

Flow cytometric cell apoptosis assay

Ovarian cancer A2780 and Iose386 cell lines were grown and treated with 40 μ g/mL ROR1-cFab for 0, 2, 6, and 12 h, and then collected and washed in PBS to prepare a single cell suspension in a binding buffer from the Annexin V-FITC/PI apoptosis kit (BD Biosciences, San Jose, CA, USA). According to the manufacturer's protocol, we labeled cells with Annexin V-FITC/PI and measured them using the LSRII flow cytometer (BD Biosciences, San Jose, CA, USA). The percentage of cell apoptosis vs. control was then calculated for each experiment.

Statistical analysis

The data were summarized as mean \pm SD and the statistical significance of group comparisons was analyzed

using Student's *t* test. A *p* value < 0.05 was deemed as statistically significant.

ACKNOWLEDGMENTS AND FUNDING

The authors would like to thank Medjaden Bioscience Limited (Hong Kong, China) for editing and proofreading of the manuscript. This study was supported in part by grants from Nanjing Science and Technology Development Program (#201503049) and from Jiangsu Provincial Medical Youth Talent (#QNRC2016104).

CONFLICTS OF INTEREST

The authors declared that there is no conflicts of interest in this work.

REFERENCES

1. Green JL, Kuntz SG, Sternberg PW. Ror receptor tyrosine kinases: orphans no more. *Trends Cell Biol.* 2008; 18:536-544.
2. Endo M, Doi R, Nishita M, Minami Y. Ror family receptor tyrosine kinases regulate the maintenance of neural progenitor cells in the developing neocortex. *J Cell Sci.* 2012; 125:2017-2029.
3. Paganoni S, Ferreira A. Neurite extension in central neurons: a novel role for the receptor tyrosine kinases Ror1 and Ror2. *J Cell Sci.* 2005; 118:433-446.
4. Cui B, Zhang S, Chen L, Yu J, Widhopf GN, Fecteau JF, Rassenti LZ, Kipps TJ. Targeting ROR1 inhibits epithelial-mesenchymal transition and metastasis. *Cancer Res.* 2013; 73:3649-3660.
5. Zhang S, Chen L, Cui B, Chuang HY, Yu J, Wang-Rodriguez J, Tang L, Chen G, Basak GW, Kipps TJ. ROR1 is expressed in human breast cancer and associated with enhanced tumor-cell growth. *PLoS One.* 2012; 7:e31127.
6. Daneshmanesh AH, Mikaelsson E, Jeddi-Tehrani M, Bayat AA, Ghods R, Ostadkarampour M, Akhondi M, Lagercrantz S, Larsson C, Osterborg A, Shokri F, Mellstedt H, Rabbani H. Ror1, a cell surface receptor tyrosine kinase is expressed in chronic lymphocytic leukemia and may serve as a putative target for therapy. *Int J Cancer.* 2008; 123:1190-1195.
7. Chien HP, Ueng SH, Chen SC, Chang YS, Lin YC, Lo YF, Chang HK, Chuang WY, Huang YT, Cheung YC, Shen SC, Hsueh C. Expression of ROR1 has prognostic significance in triple negative breast cancer. *Virchows Arch.* 2016; 468:589-595.
8. Zheng YZ, Ma R, Zhou JK, Guo CL, Wang YS, Li ZG, Liu LX, Peng Y. ROR1 is a novel prognostic biomarker in patients with lung adenocarcinoma. *Sci Rep.* 2016; 6:36447.
9. Zhang H, Qiu J, Ye C, Yang D, Gao L, Su Y, Tang X, Xu N, Zhang D, Xiong L, Mao Y, Li F, Zhu J. ROR1 expression

- correlated with poor clinical outcome in human ovarian cancer. *Sci Rep.* 2014; 4:5811.
10. Aghebati-Maleki L, Younesi V, Jadidi-Niaragh F, Baradaran B, Majidi J, Yousefi M. Isolation and characterization of anti ROR1 single chain fragment variable antibodies using phage display technique. *Hum Antibodies.* 2017; 25:57-63.
 11. Hojjat-Farsangi M, Moshfegh A, Daneshmanesh AH, Khan AS, Mikaelsson E, Osterborg A, Mellstedt H. The receptor tyrosine kinase ROR1--an oncofetal antigen for targeted cancer therapy. *Semin Cancer Biol.* 2014; 29:21-31.
 12. Yamaguchi T, Yanagisawa K, Sugiyama R, Hosono Y, Shimada Y, Arima C, Kato S, Tomida S, Suzuki M, Osada H, Takahashi T. NKX2-1/TTF1/TTF-1-Induced ROR1 is required to sustain EGFR survival signaling in lung adenocarcinoma. *Cancer Cell.* 2012; 21:348-361.
 13. Balakrishnan A, Goodpaster T, Randolph-Habecker J, Hoffstrom BG, Jalikis FG, Koch LK, Berger C, Kosasih PL, Rajan A, Sommermeyer D, Porter PL, Riddell SR. Analysis of ROR1 protein expression in human cancer and normal tissues. *Clin Cancer Res.* 2017; 23:3061-3071.
 14. Zhang S, Cui B, Lai H, Liu G, Ghia EM, Widhopf GN, Zhang Z, Wu CC, Chen L, Wu R, Schwab R, Carson DA, Kipps TJ. Ovarian cancer stem cells express ROR1, which can be targeted for anti-cancer-stem-cell therapy. *Proc Natl Acad Sci U S A.* 2014; 111:17266-17271.
 15. Potratz J, Tillmanns A, Berning P, Korsching E, Schaefer C, Lechtape B, Schleithoff C, Unland R, Schafer KL, Muller-Tidow C, Jurgens H, Dirksen U. Receptor tyrosine kinase gene expression profiles of Ewing sarcomas reveal ROR1 as a potential therapeutic target in metastatic disease. *Mol Oncol.* 2016; 10:677-692.
 16. Rebagay G, Yan S, Liu C, Cheung NK. ROR1 and ROR2 in human malignancies: potentials for targeted therapy. *Front Oncol.* 2012; 2:34.
 17. Henry CE, Llamosas E, Djordjevic A, Hacker NF, Ford CE. Migration and invasion is inhibited by silencing ROR1 and ROR2 in chemoresistant ovarian cancer. *Oncogenesis.* 2016; 5:e226.
 18. Hubbard SR, Till JH. Protein tyrosine kinase structure and function. *Ann Rev Biochem.* 2000; 69:373-398.
 19. Robinson DR, Wu YM, Lin SF. The protein tyrosine kinase family of the human genome. *Oncogene.* 2000; 19:5548-5557.
 20. Lemmon MA, Schlessinger J. Cell signaling by receptor tyrosine kinases. *Cell.* 2010; 141:1117-1134.
 21. Zwick E, Bange J, Ullrich A. Receptor tyrosine kinase signalling as a target for cancer intervention strategies. *Endocr Relat Cancer.* 2001; 8:161-173.
 22. Daneshmanesh AH, Hojjat-Farsangi M, Khan AS, Jeedi-Tehrani M, Akhondi MM, Bayat AA, Ghods R, Mahmoudi AR, Hadavi R, Osterborg A, Shokri F, Rabbani H, Mellstedt H. Monoclonal antibodies against ROR1 induce apoptosis of chronic lymphocytic leukemia (CLL) cells. *Leukemia.* 2012; 26:1348-1355.
 23. Liu Y, Yang H, Chen T, Luo Y, Xu Z, Li Y, Yang J. Silencing of receptor tyrosine kinase ROR1 inhibits tumor-cell proliferation via PI3K/AKT/mTOR signaling pathway in lung adenocarcinoma. *PLoS One.* 2015; 10:e127092.
 24. Henry C, Llamosas E, Knipprath-Meszáros A, Schoetzau A, Obermann E, Fuenfschilling M, Caduff R, Fink D, Hacker N, Ward R, Heinzelmänn-Schwarz V, Ford C. Targeting the ROR1 and ROR2 receptors in epithelial ovarian cancer inhibits cell migration and invasion. *Oncotarget.* 2015; 6:40310-40326. <https://doi.org/10.18632/oncotarget.5643>.
 25. Tan H, He Q, Gong G, Wang Y, Li J, Wang J, Zhu D, Wu X. miR-382 inhibits migration and invasion by targeting ROR1 through regulating EMT in ovarian cancer. *Int J Oncol.* 2016; 48:181-190.
 26. Siegel RL, Miller KD, Jemal A. Cancer statistics, 2016. *CA Cancer J Clin.* 2016; 66:7-30.
 27. Agarwal R, Kaye SB. Ovarian cancer: strategies for overcoming resistance to chemotherapy. *Nat Rev Cancer.* 2003; 3:502-516.
 28. Pliarchopoulou K, Pectasides D. Epithelial ovarian cancer: focus on targeted therapy. *Crit Rev Oncol Hematol.* 2011; 79:17-23.
 29. Mungenast F, Thalhammer T. Estrogen biosynthesis and action in ovarian cancer. *Front Endocrinol (Lausanne).* 2014; 5:192.
 30. Coward JI, Middleton K, Murphy F. New perspectives on targeted therapy in ovarian cancer. *Int J Womens Health.* 2015; 7:189-203.
 31. Chu S, Zhu X, You N, Zhang W, Zheng F, Cai B, Zhou T, Wang Y, Sun Q, Yang Z, Zhang X, Wang C, Nie S, et al. The Fab fragment of a human anti-siglec-9 monoclonal antibody suppresses LPS-induced inflammatory responses in human macrophages. *Front Immunol.* 2016; 7:649.
 32. Obonai T, Fuchigami H, Furuya F, Kozuka N, Yasunaga M, Matsumura Y. Tumour imaging by the detection of fibrin clots in tumour stroma using an anti-fibrin Fab fragment. *Sci Rep.* 2016; 6:23613.
 33. Lin S, Liang R, Meng X, OuYang H, Yan H, Wang Y, Jones GS. Construction and expression of mutagenesis strain of aroG gene from *Escherichia coli* K-12. *Int J Biol Macromol.* 2014; 68:173-177.
 34. Hirai H, Ogata E, Kikuchi N, Kohno T, Machii N, Hasegawa K, Watanabe T, Satoh H. The effects of liraglutide on both hypereosinophilic insulin allergy and the characteristics of anti-insulin antibodies in type 2 diabetes mellitus: a case report. *J Med Case Rep.* 2016; 10:202.
 35. Ji S, Jiang M, Yan B, Shen F, He Y, Wan A, Xia L, Ruan C, Zhao Y. The chimeric monoclonal antibody MHCSZ-123 against human von Willebrand factor A3 domain inhibits high-shear arterial thrombosis in a Rhesus monkey model. *J Hematol Oncol.* 2017; 10:111.
 36. Nishimori A, Konnai S, Okagawa T, Maekawa N, Ikebuchi R, Goto S, Sajiki Y, Suzuki Y, Kohara J, Ogasawara S, Kato Y, Murata S, Ohashi K. *In vitro* and *in vivo* antiviral activity

- of an anti-programmed death-ligand 1 (PD-L1) rat-bovine chimeric antibody against bovine leukemia virus infection. *PLoS One*. 2017; 12:e174916.
37. Kato Y, Kunita A, Abe S, Ogasawara S, Fujii Y, Oki H, Fukayama M, Nishioka Y, Kaneko MK. The chimeric antibody chLpMab-7 targeting human podoplanin suppresses pulmonary metastasis via ADCC and CDC rather than via its neutralizing activity. *Oncotarget*. 2015; 6:36003-36018. <https://doi.org/10.18632/oncotarget.5339>.
 38. Kaneko MK, Yamada S, Nakamura T, Abe S, Nishioka Y, Kunita A, Fukayama M, Fujii Y, Ogasawara S, Kato Y. Antitumor activity of chLpMab-2, a human-mouse chimeric cancer-specific antihuman podoplanin antibody, via antibody-dependent cellular cytotoxicity. *Cancer Med*. 2017; 6:768-777.
 39. Li J, Menzel C, Meier D, Zhang C, Dubel S, Jostock T. A comparative study of different vector designs for the mammalian expression of recombinant IgG antibodies. *J Immunol Methods*. 2007; 318:113-124.
 40. Tao J, Zhi X, Zhang X, Fu M, Huang H, Fan Y, Guan W, Zou C. miR-27b-3p suppresses cell proliferation through targeting receptor tyrosine kinase like orphan receptor 1 in gastric cancer. *J Exp Clin Cancer Res*. 2015; 34:139.
 41. Li P, Harris D, Liu Z, Liu J, Keating M, Estrov Z. Stat3 activates the receptor tyrosine kinase like orphan receptor-1 gene in chronic lymphocytic leukemia cells. *PLoS One*. 2010; 5:e11859.
 42. Fukuda T, Chen L, Endo T, Tang L, Lu D, Castro JE, Widhopf GN, Rassenti LZ, Cantwell MJ, Prussak CE, Carson DA, Kipps TJ. Antisera induced by infusions of autologous Ad-CD154-leukemia B cells identify ROR1 as an oncofetal antigen and receptor for Wnt5a. *Proc Natl Acad Sci U S A*. 2008; 105:3047-3052.
 43. Bicocca VT, Chang BH, Masouleh BK, Muschen M, Loriaux MM, Druker BJ, Tyner JW. Crosstalk between ROR1 and the Pre-B cell receptor promotes survival of t(1;19) acute lymphoblastic leukemia. *Cancer Cell*. 2012; 22:656-667.
 44. Widhopf GN, Cui B, Ghia EM, Chen L, Messer K, Shen Z, Briggs SP, Croce CM, Kipps TJ. ROR1 can interact with TCL1 and enhance leukemogenesis in Emu-TCL1 transgenic mice. *Proc Natl Acad Sci U S A*. 2014; 111:793-798.