

REVIEW

Guards at the gate: physiological and pathological roles of tissue-resident innate lymphoid cells in the lung

Hang Cheng^{1,2}, Chengyan Jin³, Jing Wu¹, Shan Zhu¹, Yong-Jun Liu^{1,4}, Jingtao Chen¹

¹ Institute of Translational Medicine, The First Hospital, Jilin University, Changchun 130061, China

² Department of Pediatrics, The First Hospital, Jilin University, Changchun 130021, China

³ Department of Thoracic Surgery, The Second Hospital, Jilin University, Changchun 130041, China

⁴ Sanofi Research and Development, Cambridge, MA 02139, USA

 Correspondence: yong-jun.liu@sanofi.com (Y.-J. Liu), jtchen@jlu.edu.cn (J. Chen)

Received January 12, 2017 Accepted February 2, 2017

ABSTRACT

The lung is an important open organ and the primary site of respiration. Many life-threatening diseases develop in the lung, e.g., pneumonia, asthma, chronic obstructive pulmonary diseases (COPDs), pulmonary fibrosis, and lung cancer. In the lung, innate immunity serves as the frontline in both anti-irritant response and anti-tumor defense and is also critical for mucosal homeostasis; thus, it plays an important role in containing these pulmonary diseases. Innate lymphoid cells (ILCs), characterized by their strict tissue residence and distinct function in the mucosa, are attracting increased attention in innate immunity. Upon sensing the danger signals from damaged epithelium, ILCs activate, proliferate, and release numerous cytokines with specific local functions; they also participate in mucosal immune-surveillance, immune-regulation, and homeostasis. However, when their functions become uncontrolled, ILCs can enhance pathological states and induce diseases. In this review, we discuss the physiological and pathological functions of ILC subsets 1 to 3 in the lung, and how the pathogenic environment affects the function and plasticity of ILCs.

KEYWORDS lung, innate lymphoid cells, pulmonary diseases, regional immunity

INTRODUCTION

Regional immunity greatly differs from the conventional immune organ or system. Because human diseases are

tightly connected with regional immunity, researchers have recently begun to focus on the regional immunity of organs such as the lung, intestine, liver, and skin. The lung is an open organ that is involved in gas conduction and exchange. Approximately 8,000 to 9,000 liters of air are breathed into the lung every day. Compared with the gut and the skin, the lung has a wider surface area, up to 90 m². A single layer of pulmonary epithelial cells covers the alveoli (Kopf et al., 2015). Because of these characteristics, the lung is constantly exposed to environmental stressors, such as pathogens, allergens, and airborne toxins, e.g., cigarette smoke. In the battle between the mucosal immune cells and the invaders, the innate immune cells are the first line of defense, fortifying the trenches. The innate immune cells in the lung mainly comprise lung-resident macrophages, lung-resident dendritic cells (DCs) (Holt et al., 2008; Kopf et al., 2015), and emerging sets of innate lymphoid cells (ILCs) (Spits and Di Santo, 2011; Spits and Cupedo, 2012; Eberl et al., 2015).

ILCs are important tissue-resident innate immune cells. They are promptly activated by danger signals from injured mucosa and produce an array of effective cytokines to repel pathogens and tumor cells, thereby maintaining mucosal integrity. However, if they are excessively activated, they may cause pathologic tissue damage, e.g., asthma, Crohn's disease, or psoriasis (Buonocore et al., 2010; Spits and Cupedo, 2012; Spits et al., 2013; Karta et al., 2016). Research into ILCs in the lung is only now in its infancy but it is known that there are three groups of ILCs in the lung, namely ILC1s, ILC2s, and ILC3s. Recently Lai et al. reviewed the origin, development, heterogeneity, and interaction of ILCs with other cells in the lung (Lai et al., 2016), however the roles of ILCs in lung pathologies have not been

extensively reviewed, especially with respect to ILC1s and ILC3s. With this in mind, here we describe the general characteristics, functions, and phenotypic plasticity of ILCs, focusing especially on the roles of all three groups of ILCs in diseases of the lung.

CLASSIFICATION AND GENERAL CHARACTERISTICS OF ILCs

Lymphoid tissue inducer (LTi) cells and NK cells are prototypic ILCs, which require the common γ chain of the interleukin-2 receptor (IL-2R γ) and transcriptional repressor inhibitor of DNA binding 2 (Id2) for their development (Kelly and Scollay, 1992; Held et al., 2011; Hesslein and Lanier, 2011). Over the last ten years, numerous cells have been identified whose development is also IL-2R γ and Id2-dependent; these cells are referred to as "innate lymphoid cells" (ILCs). ILCs have three main characteristics: a lymphoid morphology, the absence of rearranged antigen-specific receptors, and a lack of myeloid dendritic cell phenotypical markers; ILCs also do not express antigen receptors or undergo clonal selection (Spits and Cupedo, 2012; Spits et al., 2013). In 2013, Spits et al. classified the ILCs into three groups according to their cytokine secretion ability, mirroring CD4⁺ T helper (Th) cells: group 1 ILCs (ILC1s), comprising conventional NK cells and ILCs that produce interferon- γ (IFN- γ); group 2 ILCs (ILC2s), which are ILCs that secrete type 2 cytokines, such as IL-5 and IL-13; and group 3 ILCs (ILC3s), that produce IL-17 and/or IL-22 (Spits and Cupedo, 2012; Spits et al., 2013).

ILCs mirror Th cells but also differ from them. Although ILCs and Th cells both arise from a common lymphoid progenitor (CLP), the development of ILCs is unique. It is generally believed that ILCs initially develop in fetal liver, whereas after birth they develop in the bone marrow (Vosshenrich et al., 2005; Sawa et al., 2010; Klose et al., 2014), and are then subsequently recruited into other tissues (Eberl et al., 2015; Gasteiger et al., 2015). Migration into tissues is likely mediated by the co-ordinated action of adhesion molecules and chemokines (Eberl et al., 2015). Interestingly, some researchers found that ILC progenitors seed themselves in tissues in the embryonic and adult phases, and in these tissue micro-environments they undergo development and differentiation (Montaldo et al., 2014; Bando et al., 2015). It should be noted that, in contrast to Th cells, ILCs remain tissue-resident; they are maintained locally in one organ and do not re-enter the circulation or migrate to other organs (Gasteiger et al., 2015; Fan and Rudensky, 2016). Following acute environmental challenges tissue-resident ILCs expand locally and in this way the pool of cells is renewed, although phenotypic transformation can also occur. Hematogenously derived ILC precursors or mature ILCs can also partially supply the local tissue ILC pool (Gasteiger et al., 2015). In addition, ILCs lack recombination-activating gene (RAG), meaning that unlike B and T

cells, ILCs can be activated directly (Spits and Cupedo, 2012; Spits et al., 2013). When the mucosa is invaded by pathogens, allergens, or tumor cells, damaged epithelial cells secrete cytokines to directly stimulate ILCs. ILCs then become promptly activated, proliferate, and produce copious amounts of cytokines to repel the invaders and maintain mucosal homeostasis; this response, however, may also lead to pathological damage (Spits and Di Santo, 2011; Scanlon and McKenzie, 2012; Philip and Artis, 2013; Salimi and Ogg, 2014). Thus, ILCs become activated by sensing danger signals from the tissue milieu rather than by antigen presentation with antigen-presenting cells (APCs) (Drake and Kita, 2014; Eberl et al., 2015). Compared with the few days or weeks required by Th cells (Hansen et al., 1999), ILCs can therefore be activated more quickly (Spits and Cupedo, 2012; Fan and Rudensky, 2016) (Table 1).

ILC PLASTICITY

The phenotype of ILCs is not stable; these cells are highly plastic and can change phenotypes under the influence of the environment. IL-2 and IL-12 drive human natural cytotoxicity receptor (NCR)-positive ILC3s (NCR⁺ILC3s) to transform into ILC1s (Cella et al., 2010; Bernink et al., 2013; Bernink et al., 2015). In response to the tissue environment *in vivo*, ILC3s down-regulate the expression of ROR γ t (retinoic acid receptor-related orphan receptor γ t) and produce IFN- γ (Vonarbourg et al., 2010a). IL-1 β and IL-12 induce ILC2s to express T-bet and to produce IFN- γ while down-regulating ST2 and GATA3, and losing the ability to produce IL-5 and IL-13 (Bal et al., 2016; Kim et al., 2016; Lim et al., 2016). IL-23 and IL-1 β cause CD127⁺ ILC1s to differentiate into IL-22-producing ILC3s (Bernink et al., 2015). Enhanced GATA3 expression by ILC1s results in their conversion to ILC2s with the capacity to produce greater amounts of type 2 cytokines (Mjosberg et al., 2012; KleinJan et al., 2014). Such plasticity occurs not only between ILC groups, but also between ILC subgroups. For example, mouse NKp46⁻ROR γ t⁺ LTi-like cells may transform into NKp46⁺ROR γ t⁺ cells either *in vivo* or *in vitro* (Vonarbourg et al., 2010a; Klose et al., 2013; Rankin et al., 2013; Rankin et al., 2016). Human NKp44⁻ILC3s undergo a profound shift toward NKp44⁺ ILC3s upon culture in the presence of IL-2, IL-1 β , and IL-23, and they display pro-inflammatory properties (Bernink et al., 2013; Glatzer et al., 2013). Plasticity is one of the important characteristics of ILCs, and this property is especially important in the lung; the shift of ILC2s to ILC3s and the plasticity within ILC2 subgroups will be discussed below in detail (Table 2) (Fig. 1).

IDENTIFICATION AND CHARACTERIZATION OF ILC1S

Compared with the other ILC groups, ILC1s are the least studied. Their characteristics are not yet well defined, and

Table 1. Comparison of ILC and Th cell characteristics

	ILCs	TH cells
TF	ILC1s: T-bet ILC2s: Gata3 ILC3s: ROR γ t	Th1: T-bet Th2: Gata3 Th17: ROR γ t
Principal effector cytokines	ILC1s: IFN- γ ILC2s: IL-3, IL-4, IL-9, IL-13 ILC3s: IL-17, IL-22	Th1: IFN- γ Th2: IL-3, IL-4, IL-9, IL-13 Th17: IL-17, IL-22
Genesis	CLP	CLP
Innate/Adaptive system	Innate immune cells	Adaptive immune cells
RAG	Absent	Present
Response time	Hours~days	Days~weeks
Activated pathway	APC-independent Directly activated	APC-dependent Indirectly activated
Tissue residency	Yes	No
Extension/Activation	Tissue	Lymph node
Recruitment (Back to circulation)	Seldom	Frequently
Memory-property	Antigen non-specific memory-property	Antigen specific memory-property

APC, antigen-presenting cell; CLP, common lymphoid progenitor; ILCs, innate lymphoid cells; SLO, secondary lymph organ; TF, transcription factor.

indeed there is even still debate concerning their classification. As of now, the ILCs nomenclature introduced by Spits et al. (2013) is widely accepted, with NK cells and ILC1s belonging to group 1 ILCs. Group 1 ILCs are defined by their ability to produce IFN- γ and inability to produce IL-4, IL-13, IL-22, and IL-17. They require transcription factor T-bet for their development (Spits et al., 2013). NK cells have been reviewed elsewhere, and therefore we will only focus on ILC1s in this review.

The original report concerning mouse ILC1s described them as ROR γ t⁺NKR⁻LTi, capable of releasing IFN- γ , and as being potent inducers of experimental colitis (Vonarbourg et al., 2010b). Another group of mouse ILC1s was then described as NKp46⁺NKp1.1⁺Eomes⁻T-bet⁺, with the ability to produce IFN- γ (Klose et al., 2014). In humans, ILC1s can be divided into CD127^{low} ILC1s and CD127^{high} ILC1s, based on the expression of CD127. CD127^{low} ILC1s are defined as CD3⁻CD56⁺NKp44⁺CD103⁺ and CD3⁻CD56⁺NKp44⁻CD103⁻; the former have an intraepithelial localization (Fuchs et al., 2013). CD127^{high} ILC1s were first identified in human tonsil and intestine, and they are defined as Lineage (Lin)⁻CD127⁺CRTH2⁺CD117⁻NKp44⁻ (Bernink et al., 2013). Although the markers that define ILC1s in mouse and human are somewhat different, the two are generally defined as lineage negative, T-bet positive, and both are capable of producing IFN- γ .

CD127^{high} and CD127^{low} ILC1s have also been identified in the human lung. CD127^{high} ILC1s are identified as Lin⁻CD127⁺CD117⁻NKp44⁻; they express T-bet but do not express C-C motif chemokine receptor 6 (CCR6), CD103, or CD25. CD127^{low} ILC1s are defined as Lin⁻CD127⁻NKp46⁺, and express T-bet. Similar to CD127^{high} ILC1s in the tonsil

and the intestine, most Lin⁻CD127⁻NKp46⁺NKp44⁺ cells express CD103 (Carrega et al., 2015). Another group identified non-toxic ILC1s in the human lung was Lin⁻CD56⁻IL12R β 2⁺ (De Grove et al., 2016). In mouse lung, ILC1s are defined by the Lin⁻CD90⁺T-bet⁺ phenotype, and they express IL-12R β 2 and IL-18R α ; furthermore, IL-12 and IL-18 enhance ILC1 expansion *in vivo*, and they produce copious amounts of IFN- γ (Silver et al., 2016a) (Table 2).

ILC1S IN THE LUNG

ILC1s and infection

ILC1s produce large amounts of IFN- γ and protect the organism against pathogens as first reported in mouse models of intracellular infection, e.g., infections caused by the parasite *Toxoplasma gondii* and by *Clostridium difficile* in the intestine (Klose et al., 2014; Abt et al., 2015). Silver et al. (2016a, b) found that during lung infection in mice caused by either influenza A, *Haemophilus influenzae*, respiratory syncytial virus (RSV), or *Staphylococcus aureus*, GATA3 expression in the resident ILC2s was rapidly down-regulated (within two days after infection), and this was accompanied by decreased expression of ST2, CD25 (IL-2R α), IL-7R α , inducible costimulator (ICOS), and the stem cell factor receptor c-kit (CD117). Meanwhile, the T-bet⁺ ILC1 number in the lung increased and the expression of IL-12 and IL-18 receptors (IL-12R β 2 and IL-18R α) in ILC1s was up-regulated. The down-regulation of GATA3 expression was negatively correlated with IL-18R α up-regulation. These results indicate that during infection of the lung, ILC2s may lose their properties and phenotypically convert into ILC1s. To confirm

Table 2. Characteristics of lung ILCs

	ILC1s	ILC2s	ILC3s
Development-dependent TF	T-bet	Gata3, ROR α , EST1, Bcl11b, G9a, Gfi1	ROR γ t
Surface marker (Human)	CD127 ^{high} ILC1s: Lin ⁻ CD127 ⁺ CD117 ⁻ NKp44 ⁻ CD25 ⁻ CD103 ⁻ CCR6 ⁻ CD127 ^{low} ILC1s: Lin ⁻ CD127 ⁻ NKp44 ⁻ NKp46 ⁺ CD103 ⁺	Lin ⁻ CD127 ⁺ CRTH2 ⁺ CD117 ^{-/+} CD161 ⁺ CD25 ⁺ ICOS ⁺ ST2 ⁺	Lin ⁻ CD127 ⁺ CD117 ⁺ CD161 ⁺ CD25 ⁺ NKp44 ^{-/+} NKp46 ^{-/+} NKp30 ^{-/+} CD56 ^{-/+} CCR6 ^{-/+} CXCR5 ⁺
Surface marker (Mouse)	Lin ⁻ CD90 ⁺ IL-12R α ⁺ IL-18R α ⁺	Lin ⁻ CD90 ⁺ CD127 ⁺ ST2 ⁺ Sca-1 ⁺ KLRG1 ⁺ CD25 ⁺ IL-7RB ⁺ CD44 ⁺ IL-9R ⁺	Lin ⁻ CD90 ⁺ CD127 ⁺ NKp46 ^{-/+} NKp30 ^{-/+} CD56 ^{-/+} CCR6 ^{-/+}
Active factors	IL-12, IL-18	IL-25, IL-33, TSLP, PGD ₂ , TGF- β , Spred1, Arginase 1, TL1A, RAGE, SP-D, IRF4, CysLT1, IL-1 β	IL-1 β , IL-23
Inhibitory factors	-	IFN- γ , IL-27, Lipoxin4, Corticosteroid, TSA, PGI ₂ , HES	-
Effective cytokines	IFN- γ	IL-4, IL-5, IL-6, IL-13, IL-9	IL-17, IL-22, TNF- α , IL-8, IL-2, GM-CSF, lymphotoxin

NCR, natural cytotoxicity receptor; TF, transcription factor; Bcl11b, B cell leukemia/lymphoma 11b; Gfi1, growth factor independence-1; Lin, lineage; G9a, lysine methyltransferase G9a; HES, *Heligmosomoides polygyrus* excretory/secretory products; TSLP, thymic stromal lymphopoietin; PGD₂, prostaglandin D₂; TL1A, tumor necrosis factor like cytokine 1A; RAGE, receptor for advanced glycation end-products; SP-D, surfactant protein D; IRF4, interferon regulatory factor 4; TSA, trichostatin A; PGI₂, prostaglandin I₂; CysLT1, cysteinyl leukotriene receptor 1.

these findings, Silver et al. used a reporter mouse that expressed ST2 labeled with green fluorescent protein (GFP), they found that upon stimulation with IL-12, IL-18, and IL-33, the number of IL-18R α ⁺ ILC1 cells increased, and 50% of these cells expressed ST2-GFP. Collectively, these data suggest that lung ILC1s are derived from ILC2s that are resident in the lung rather than from ILC1 proliferation.

In the same study, GFP⁺ ILC2s (GFP-labeled ILC2s) were transferred to *Rag2*^{-/-}/*Il2rg*^{-/-} mice with mature lymphocyte deficiency, and then the mice were infected with influenza A virus. GFP⁺ ILC2s infiltrated into the lungs of host mice 7 d after infection. GATA3 expression in these cells was significantly down-regulated and accompanied by a striking up-regulation of both IL-18R α and IL-12R β 2 expression. Double IHC (immunohistochemistry) revealed that ILCs were localized to the influenza virus-infected airways. IHC combined with hybridization *in situ* revealed that *Il-12* and *Il-18* mRNAs

produced by myeloid-derived cells were present near GFP⁺ ILC2s in the inflamed region. GATA3^{high} ILCs were predominantly localized in uninfected tissue regions, whereas GATA3^{low} ILCs were enriched in virus-associated areas (Silver et al., 2016a).

In summary, these data demonstrate that during infection, ILC2s migrate to the inflamed regions, where the myeloid-derived pro-inflammatory cytokines IL-12 and IL-18 drive ILC2 conversion into ILC1s, enabling their participation in the anti-pathogen response (Fig. 2).

ILC1s and chronic obstructive pulmonary disease (COPD)

COPD is widely regarded as a heterogeneous disease associated with increased numbers of alveolar macrophages, T lymphocytes (predominantly Tc1, Th1, and Th17

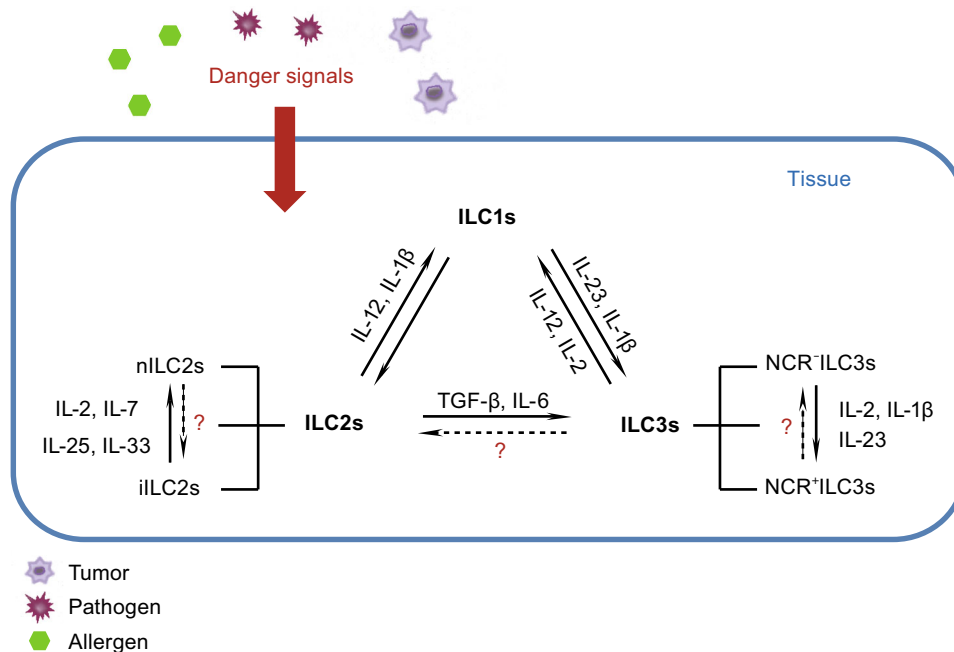


Figure 1. ILC plasticity. ILCs recruit into the lung and become resident in the mucous epithelium. When the tissue is exposed to danger signals elicited by pathogens, allergens or tumor cells, the epithelium or other innate immune cells produce many cytokines. In response to these cytokines, ILCs may alter their phenotype to respond to the environment. IL-2 and IL-12 drive the transformation of ILC3s to ILC1s. ILC1s convert to ILC3s under the influence of IL-1 β and IL-23; ILC2s also transform to ILC1s when cultured with IL-12 and IL-1 β . Upon increased GATA3 expression, ILC1s gain ILC2s characteristics; when cultured with TGF- β and IL-6, ILC2s become ILC3-like. Whether ILC3s convert into ILC2s is still unclear. In the ILC2 and ILC3 sub-groups, iILC2 cells give rise to cells with nILC2 phenotype when cultured in the presence of IL-2, IL-7, IL-25, and IL-33 *in vitro* or *in vivo*. Under the influence of IL-2, IL-1 β , and IL-23, NCR⁻ILC3s express NCR⁺. The hypothesis that nILC2s convert to iILC2s and NCR⁺ILC3s convert to NCR⁻ILC3s should be confirmed in the future. See text for details.

cells), B lymphocytes, and neutrophils (Barnes, 2009; Kearley et al., 2015). Recently, two groups almost simultaneously reported a relationship between ILC1s and COPD (Bal et al., 2016; Silver et al., 2016a). The percentage of ILC1s is much higher in patients with COPD than in healthy controls, and is accompanied by a lower occurrence of ILC2s, either in the lung or in the circulation (Bal et al., 2016; Silver et al., 2016a). According to the classification of the Global Initiative for Chronic Obstructive Lung Disease (GOLD), ILC1s occur more frequently in severe COPD (GOLD III–IV) than in milder COPD (GOLD I–II). A strong negative correlation exists between the occurrence of ILC1s in the blood and lung function, with a higher proportion of ILC1s associated with worse lung function. The numbers of circulating ILC1s are higher in patients with two or more exacerbations of COPD per year than in patients with one exacerbation per year (Bal et al., 2016; Silver et al., 2016a).

The development and exacerbation of COPD are associated with cigarette smoke and viral and bacterial infection. Silver et al. (2016a, b) reported that the occurrence of GATA3⁺ ILC2s declines promptly and that the fraction of

T-bet⁺IL-18R α ⁺ ILC1s is increased in response to cigarette smoke or viral and bacterial infections in mouse models (Silver et al., 2016b). When ILC2s from human fetal lung are cultured with IL-2, IL-1 β , and IL-12, CRTH2 and c-kit in ILC2s are down-regulated, and the cells produce IFN- γ but not IL-5. These results indicate that ILC2s have the potential to transform into ILC1s when exposed to a type 1 inflammatory environment, such as cigarette smoke or infection, and participate in the development of COPD (Bal et al., 2016) (Fig. 2).

ILC1s and tumors

Recently, Dadi et al. (2016) discovered that unconventional type 1-like innate lymphoid cells and type 1 innate-like T cells play a role in tumor-elicited immune surveillance in murine cancer models (Dadi et al., 2016). This suggests that ILC1s may possess an anti-tumor function; however, no data on the function of ILC1s in lung tumors are available, and future studies should thus be performed to further elucidate this issue.

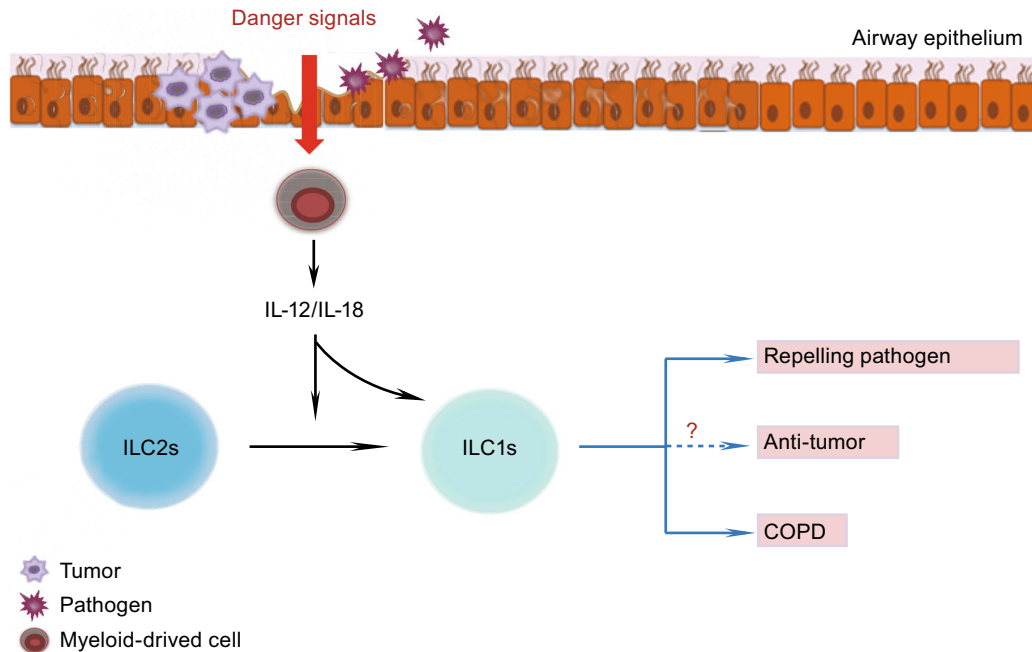


Figure 2. ILC1 functions in the lung. When pathogens, such as viruses or bacteria, or tumor cells invade the airway epithelium, the myeloid cells receive danger signals from the epithelium and produce IL-12 and IL-18. These pro-inflammatory cytokines down-regulate GATA3 expression of ILC2s and then drive the conversion of ILC2s into ILC1s. IL-12 and IL-18 also enhance the activation and expansion of ILC1s. After activation, ILC1s produce copious amounts of IFN- γ . IFN- γ plays potentially important roles in clearing both pathogens and tumors, and also in the development of chronic obstructive pulmonary disease (COPD). See text for details.

IDENTIFICATION AND CHARACTERIZATION OF ILC2S

In 2001, Fort et al. were the first to report that non-T/non-B T cells in *Rag2*^{-/-} mice could produce IL-5 and IL-13, leading to a type 2 response (Fort et al., 2001). Ten years later, these cells were observed by different researchers and were differently named as nuocytes, natural helper cells, or innate helper type 2 cells (Moro et al., 2010; Neill et al., 2010; Price et al., 2010). These three groups of cells share similar molecular surface markers and function, and finally they were collectively named as group 2 innate lymphoid cells. In addition to Id2 and IL-2R γ , the development and function of ILC2s depend on GATA3, Notch, and ROR α (Halim et al., 2012b; Mjosberg et al., 2012; Gentek et al., 2013). Growth factor independence-1 (Gfi1), B cell leukemia/lymphoma 11b (Bcl11b), lysine methyltransferase G9a, and ETS1 are also essential for the development of ILC2s (Spooner et al., 2013; Walker et al., 2015; Yu et al., 2015; Zook et al., 2016).

ILC2s can be activated by IL-25, IL-33, and thymic stromal lymphopietin (TSLP), which are produced by epithelial cells and certain immune cells. Other ILC2 activators were later identified, namely, tumor necrosis factor (TNF)-family

cytokine TL1A, prostaglandin D₂, cysteinyl leukotriene receptor 1 (CysLT1), arginase 1, receptor for advanced glycation end-products, and surfactant protein D (Barnig et al., 2013; Doherty et al., 2013; Meylan et al., 2014; Yu et al., 2014; Tait Wojno et al., 2015; Taniguchi et al., 2015; Monticelli et al., 2016; Thawer et al., 2016). IL-1 β has been considered to be an activator of ILC3s, but a recent study demonstrated that IL-1 β may also activate ILC2s (Bal et al., 2016). These cells can also produce amphiregulin to enhance the recovery of the mucosa during viral infection (Monticelli et al., 2011). ILC2 inhibitors were recently identified and include prostaglandin I₂, IFN- γ , IL-27, and lipoxin A4. Because these molecules inhibit ILC2 proliferation and cytokine production (McHedidze et al., 2016; Moro et al., 2016; Zhou et al., 2016), they may be used to control ILC2-related diseases (See below). Activated ILC2s predominantly produce type 2 cytokines such as IL-5, IL-13, and IL-4, and also IL-9 (Moro, 2010; Mjosberg et al., 2011; Wilhelm et al., 2011; Kim et al., 2013).

In the mouse lung, ILC2s are defined as Lin⁻CD90⁺ ICOS⁺CD25⁺ST2⁺CD127⁺. They also express CD44 and IL-17BR, and 20% of nuocytes (ILC2s) express c-kit (CD117) (Monticelli et al., 2011; Barlow et al., 2012;

Bartemes et al., 2012). Based on their killer cell lectin-like receptor G1 (KLRG1) expression, mouse lung ILC2s can be divided into two groups: nILC2s, designated as Lin⁻ST2⁺KLRG1^{int} cells, and iILC2s, designated as Lin⁻ST2⁻KLRG1^{hi} (Huang et al., 2015). ILC2s are also found in the fetal and adult lung, and in the bronchoalveolar lavage fluid (BLF) in human. They are defined as Lin⁻CD127⁺CD161⁺CRTH2⁺ and also express ICOS, CD25 and ST2; they also partially express CD117 (Mjosberg et al., 2011; Monticelli et al., 2011). ILC2s in mouse and human have similar markers and function, although CRTH2 is specific for human since mouse ILC2s do not express this marker (Table 2).

ILC2S IN THE LUNG

ILC2s were the first ILC group identified in lung (Monticelli et al., 2011). ILC2-related diseases in the lung involve pathogen infections (virus and helminth parasites), asthma, pulmonary fibrosis, and eosinophilic pleural effusion in primary spontaneous pneumothorax.

ILC2s and viral infection

During viral infection, ILC2s may exert a dual effect in the lung: on the one hand, ILC2s play a protective role in repelling the virus; on the other hand, if ILC2 function is not tightly controlled, these cells may induce airway hyperactivity (Fig. 3).

Maintenance of epithelial integrity

During the early phase of respiratory infection caused by influenza A virus subtype H₁N₁, no significant differences were observed between wild-type mice and *Rag*^{-/-} mice that lack adaptive immunity with respect to the decline in lung function and pathology of the lung. Because ILC2s accumulated in the lung, it was inferred that lung ILC2s play a key role in the regulation of lung innate immunity and tissue homeostasis (Monticelli et al., 2011). Depletion of ILCs led to substantial lung epithelial degeneration and necrosis, as a result of significantly impaired epithelial integrity. Adoptive transfer of ILCs to ILC-depleted mice effectively restored epithelial integrity (Monticelli et al., 2011). In the same study it was found that IL-33/IL-33R signaling was essential for the accumulation of ILC2s in H₁N₁ virus infected lungs whereas IL-13 and IL-22 appeared to be dispensable for tissue homeostasis (Monticelli et al., 2011). Data from genome-wide transcriptional profiling has suggested that ILC2s in the lung express wound healing-associated genes at higher levels. *In vivo*, lung ILC2s have the ability to produce high levels of amphiregulin, a molecule that regulates tissue remodeling and repair during acute epithelial injury and asthma (Dolinay et al., 2006; Enomoto et al., 2009; Fukumoto et al., 2010; Monticelli et al., 2011). In summary, lung ILC2s play an important role in maintaining the integrity of the respiratory epithelium and restoring lung function by producing amphiregulin during H₁N₁ infection.

Induction of lung inflammation and airway hyper-reactivity

Chang et al. (2011) observed that BALB/c mice infected with H₃N₁ virus rapidly develop AHR (airway hyper-responsiveness) that peaked on day 5 of infection. Because the sensitization of Th2 cells and enrollment of adaptive immunity during allergen-induced AHR required 7–14 d to develop (Hansen et al., 1999), based on the speed with which H₃N₁ induced AHR, it was hypothesized that this response was mediated by innate immune mechanisms. The authors provided evidence that indeed H₃N₁-induced AHR development did involve the innate immune pathway and did not require T, B, or NKT cells (Chang et al., 2011). Depletion of natural helper cells suppressed the AHR response, and furthermore only the transfer of IL-13-producing ILC2s, but no other IL-13-producing cells (such as mast cells or basophils), was sufficient for the development of H₃N₁-induced AHR. Furthermore, H₃N₁-induced AHR was tightly correlated with the presence of ILC2s, IL-33, and IL-13. IL-33 derived from alveolar macrophages likely plays an essential role in the activation of ILC2s (Chang et al., 2011). These data confirm that ILC2s are essential for the development of AHR during H₃N₁ infection.

During RSV infection, the number of IL-13-producing ILC2s triples compared with basal levels, and the IL-13 levels increase simultaneously. This increase contributes to airway hyper-reactivity and airway mucus accumulation in a TSLP-dependent manner (Stier et al., 2016). ILC2s have also been shown to produce IL-13 in order to recruit eosinophils and induce AHR through the IL-33/ST2 pathway during RSV infection (Liu et al., 2015b). Similarly, neonatal rhinovirus induces AHR and mucus metaplasia through IL-25 and ILC2s (Hong et al., 2014).

ILC2s and helminth parasites

Upon infection with helminthic parasites, the host undergoes a strong type 2 response to clear the pathogens (Paul and Zhu, 2010; Maizels et al., 2012). During *Strongyloides venezuelensis* infection of the lung, IL-33 levels increase, activating ILC2s to release the effector cytokines IL-5 and IL-13 that, in turn, can recruit eosinophils to fight the infection. IL-33^{-/-} mice are unable to recruit eosinophils to the lungs or expel *S. venezuelensis* (Yasuda et al., 2012). During lung inflammation induced by *Nippostrongylus brasiliensis*, epithelial cells produce TSLP and IL-33, synergistically stimulating ILC2s to produce IL-5 and IL-13. Furthermore, IL-9, which is produced by ILC2s in an auto-crine manner, stimulates IL-5 and IL-13 production by ILC2s. In IL-9 receptor-deficient mice infected with *N. brasiliensis*, ILC2s numbers are reduced and IL-5, IL-13, and amphiregulin levels are decreased, whereas the numbers of Th2 cells remain unchanged. As a result, helminth clearance is strongly impaired (Turner et al., 2013). The IL-9 signal plays an important role in the activation of ILC2s, especially in the early phase of helminth infection. This process also requires

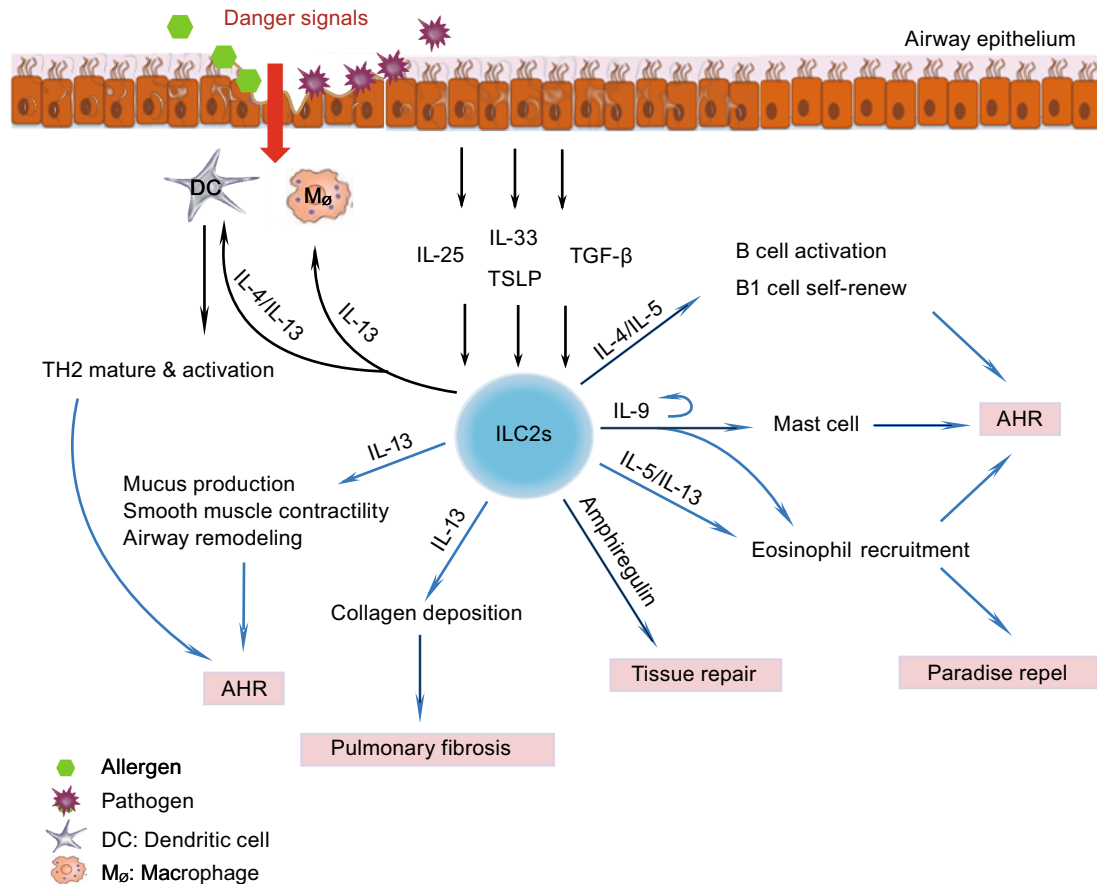


Figure 3. ILC2 functions in the lung. Following interaction with pathogens or allergens, the airway epithelium secretes IL-25, IL-33, TSLP, and TGF- β . Upon a molecular cue from the damaged epithelium, activated macrophages and DCs also release IL-33. All of these cytokines activate ILC2s. After activation, ILC2s proliferate and produce copious amounts of IL-4, IL-5, IL-9, IL-13, and amphiregulin. IL-4 stimulates B cells and also activates DCs and enhances Th2 cell maturation and activation. IL-5 and IL-13 stimulate the proliferation and recruitment of eosinophils, which are involved in parasite clearance and airway hyper-responsiveness (AHR). IL-5 also enhances B1 cell self-renewal and antibody production by B cells. ILC2s produce IL-9, and the autocrine effect of IL-9 stimulates secretion of effector cytokines by ILC2s. IL-13 induces smooth muscle contractility and airway remodeling that leads to AHR. Additionally, IL-9 plays an essential role in mast cell differentiation and also can induce mast cells to secrete IL-6; IL-9 can also promote both the proliferation of eosinophils and induce their migration into the lung. IL-13 can also induce collagen deposition and the development of pulmonary fibrosis. Furthermore, IL-13 enhances eosinophil recruitment and alternative macrophage activation. Finally, ILC2s also play an important role in airway remodeling by secreting amphiregulin. See text for details.

interferon regulatory factor 4 (IRF4) (Turner et al., 2013; Mohapatra et al., 2016).

During *N. brasiliensis* infection, the ILC2 subgroup iILC2 can convert into nILC2. *N. brasiliensis*-infected *Il17rb*^{-/-} mice lack iILC2 cells and, interestingly, nILC2 cell numbers are significantly decreased in these mouse models. This suggests that iILC2s contribute to the nILC2 population during *N. brasiliensis* infection. Researchers simultaneously transferred CD45.1⁺ nILC2s and CD45.2⁺ iILC2s into *Rag2*^{-/-}*Il2rg*^{-/-} mice infected with *N. brasiliensis*, and 14 d later found that all iILC2 cells had developed into nILC2-like cells. iILC2s may thus comprise a transient progenitor population of cells that can transform into nILC2-like cells and be

involved in the clearance of *N. brasiliensis* (Huang et al., 2015) (Fig. 1).

Interestingly, another natural mouse parasite, *Heligmosomoides polygyrus*, that causes parasitic infections suppresses inflammatory responses in models of asthma, food allergy, diabetes, and colitis (McSorley and Maizels, 2012). *H. polygyrus* excretory/secretory (HES) products can suppress both Treg (Grainger et al., 2010) and dendritic cells (Massacand et al., 2009). McSorley et al. found that HES products inhibit the allergic reaction in the ovalbumin (OVA)-induced mouse asthma model by suppressing the release of IL-33 and inhibiting the activation of ILC2s (McSorley et al., 2014; McSorley et al., 2015).

ILC2s and asthma

Asthma is a heterogeneous disease that occurs worldwide and whose pathology involves chronic airway inflammation. The type 2 response is regarded as a central mechanism for allergic asthma (Deckers et al., 2013; Licon-Limon et al., 2013). Conventionally, Th2 cells have been regarded as the main source of type 2 cytokines, but this notion has now been challenged by the emergence of ILC2 cells.

In mouse asthma models that use ovalbumin (Kim et al., 2012), house dust mite (HDM) (Wilhelm et al., 2011; Halim et al., 2012a; Klein Wolterink et al., 2012), papain (Halim et al., 2012a), and fungal allergens, ILC2s uniformly increase in number and are the major source of IL-5 or/and IL-13, especially in the early phases of the disease. In mouse models that lack adaptive immune cells, i.e., T and B cells, allergens can also induce significant AHR, a high level of type 2 cytokines, and increased numbers of ILC2s in the lung (Bartemes et al., 2012; Halim et al., 2012a). In these allergen-induced asthma models, the pulmonary epithelium, macrophages, and DCs release IL-33; in addition, the pulmonary epithelium also produces IL-25, TSLP, and transforming growth factor- β (TGF- β). All of these cytokines can activate ILC2s (Halim et al., 2012a; Kim et al., 2012; Iijima et al., 2014; Denney et al., 2015). *In vitro*, IL-25 and IL-33 enhance the proliferation of ILC2s and stimulate them to produce IL-4, IL-5, IL-13, and/or IL-9 (Wilhelm et al., 2011; Barlow et al., 2012; Bartemes et al., 2012; Halim et al., 2012a; Kim et al., 2012; Klein Wolterink et al., 2012). This is important because, IL-4 stimulates B cells to produce IgE, IL-5 recruits and activates eosinophils and also enhances B cell antibody production and B1 cell self-renewal, and IL-13 enhances smooth muscle contraction, epithelial mucous production, airway remodeling, and eosinophil recruitment. IL-9 plays an essential role in mast cell differentiation and can also induce mast cells to secrete IL-6; IL-9 promotes both the proliferation of eosinophils and their migration into the lung (Renauld, 2001). Otherwise, the IL-9 production of ILC2s depends on IL-2 secreted by adaptive immune cells. IL-9 also stimulates ILC2s to produce IL-13 and IL-5 (Wilhelm et al., 2011). All of these cytokines play an important role in the development of AHR (Fig. 3).

During AHR development, ILC2s crosstalk with DCs, CD4⁺ Th2 cells, B cells, and Th9 cells, thereby potentiating the pathology. ILC2s produce IL-13, which directly activates DCs to express CCL17, enhancing CD4⁺ Th2 cell activation; ILC2s also activate Th2 cells directly by producing IL-4 and OX40L. ILC2s and CD4⁺ Th2 cells thereby exert a synergistic effect on the development of AHR (Drake et al., 2014; Gold et al., 2014; Halim et al., 2014; Halim et al., 2015; Liu et al., 2015a). Mouse lung ILC2s enhance the proliferation of B1- and B2-type B cells and stimulate their production of IgM, IgG1, IgA, and IgE *in vitro*. Specifically, ILC2-derived IL-5 is critically involved in increased IgM production (Drake et al., 2016). Polarized ILC2s and Th9 cells also stimulate

each other in mouse models of asthma in the lung (Ying et al., 2016).

Researchers have recently observed that similar to Th2 cells, ILC2s gain memory-like properties upon allergen challenge. ILC2s stimulated by inhalation of either IL-33 or papain persist for a long time; even after resolution of the inflammatory response; in fact, some ILC2s persist for more than 4 weeks. Furthermore, 'allergen-experienced' ILC2s responded better to unrelated allergen than naïve ILC2s, mediating a more severe allergic inflammation (Martinez-Gonzalez et al., 2016). Allergen-experienced ILC2s are also more responsive and produce higher amounts of the same cytokines than unexperienced ILC2s. Compared with memory lymphocytes, ILC2s are activated by cytokines, while memory lymphocytes are activated by specific antigens, thus the memory-like ILC2s are antigen non-specific. This means that memory-like ILC2s can be activated by unrelated allergens but produce a stronger response than naïve ILC2s. Memory-like ILC2s can also enhance Th2 cell-mediated adaptive type 2 lung inflammation. These two important characteristics may explain the phenomena that some asthma patients react against multiple allergens, while some do not (Martinez-Gonzalez et al., 2016).

In comparison with mouse, far fewer studies describing the role of ILC2s in human asthma have been published. The occurrence of ILC2s is more frequent in the blood of subjects with allergic asthma than in healthy individuals and allergic donors. When stimulated with IL-25 or IL-33, peripheral blood mononuclear cells from patients with allergic asthma produced significantly greater amounts of IL-5 and IL-13 than those from patients with allergic rhinitis and those from healthy donors (Bartemes et al., 2014; Jia et al., 2016). Recently, ILC2s were found in the bronchoalveolar lavage (BAL) and sputum of patients with asthma, and the proportion of IL-5⁺IL-13⁺ ILC2s in the sputum of patients with severe asthma was higher than that in corresponding samples from patients with mild asthma (Smith et al., 2016). ILC2 levels are also increased in the sputum from severe asthmatic children (Nagakumar et al., 2016). Other researchers have also compared the relationship between ILC2s and asthma control status, and the results indicate a positive correlation between IL-13-producing ILC2s and asthma control status (Jia et al., 2016).

Based on the above studies of examining ILC2s in human asthma, the number of ILC2s is increased in asthmatic patients' blood, these ILC2s are activated, and the number of IL-13-producing ILC2s negatively correlates with asthma control status. These results might suggest that level of ILC2s in the blood maybe partially indicate asthma status. However, ILCs are generally tissue-resident cells and the characteristics of ILCs in tissue are very different from ILCs in the circulation since tissue-resident ILCs are affected by the tissue microenvironment, which can cause changes of biomarker profile as well as function. Therefore, the blood ILC profile and function does not absolutely represent ILC2s

resident in the lungs of asthmatics; blood ILC2s therefore only partially indicates the status of the disease. In the future, it will be important to study the function of human tissue-resident ILC2s, for example ILC2s from BAL and sputum, and even from lung tissue itself.

ILC2s and pulmonary fibrosis

Pulmonary fibrosis is a heterogeneous disease that is prevalent worldwide, and that is typically regarded as a chronic progressive disease, with high morbidity and mortality (Hutchinson et al., 2015). The key pathogenic mechanism involves extracellular matrix deposition in the lung. The pro-inflammatory cytokines TGF- β , IL-13, IL-1 β , and IL-17A all play an important role in the fibrotic process (Kolb et al., 2001; Wynn, 2011).

In the mouse model of pulmonary fibrosis that uses injection of *S. mansoni* eggs, IL-25 has been shown to be the key cytokine in the development of fibrosis. IL-25 induces a dramatic increase in both IL-13 and TGF- β in the lungs. In humans, increased levels of IL-25 and ILC2s are found in the BAL and lung tissue of patients with idiopathic pulmonary fibrosis (Hams et al., 2014). Compared with wild-type mice, pulmonary collagen deposition is impaired in ILC2-deficient mice after *S. mansoni* egg injection (Hams et al., 2014). Furthermore, ILC2s induce pulmonary collagen deposition in an IL-13-dependent manner (Hams et al., 2014). Li et al. (2014) have suggested that the IL-33-ST2 axis is essential for the initiation and progression of pulmonary fibrosis. In this model IL-33 activates M2 macrophages to produce IL-13 and TGF- β 1, and then further induces the expansion of ILC2s to produce IL-13, ultimately resulting in the development of pulmonary fibrosis (Li et al., 2014).

Dermal and circulating ILC2 counts correlate closely with the occurrence of pulmonary fibrosis in systemic sclerosis patients. This implies that ILC2s may aggravate the pulmonary fibrosis in these patients (Wohlfahrt et al., 2016) (Fig. 3).

ILC2s and eosinophilic pleural effusion (EPE) in primary spontaneous pneumothorax (PSP)

EPE is defined as > 10% eosinophilia in the pleural fluid and is frequently associated with the presence of blood and/or air in the pleural space (Kalomenidis and Light, 2003). PSP is a common complication, with a high rate of recurrence in EPE (Kalomenidis and Light, 2003).

The levels of IL-4, IL-5, IL-13, and Eotaxin-3, as well as TSLP and IL-33, have been shown to be increased in the pleural fluid of PSP patients. These cytokines are type 2 immune response-related, and it therefore appears that Th2 cells and ILC2s might play an essential role in this pathology; however, CD4⁺ and CD8⁺ T cells are known not to be involved in the pathogenesis of PSP (Kwon et al., 2013). IL-33 directly stimulates ILC2s to produce increased amounts of IL-5, which then recruits eosinophils into the

pleural space, resulting in EPE; Th2 cells are not involved in this process. This indicates that the type 2 immune response is associated with the development of EPE in PSP through an ILC2-dependent but Th2-independent manner (Kwon et al., 2013).

IDENTIFICATION AND CHARACTERIZATION OF ILC3S

ILC3s can be classified into two main groups according to the host developmental stage when they mature: fetal LTi cells and post-natal (adult) ILC3s. Fetal LTi cells, the prototypical ILC3s, were originally reported two decades ago. In mice, LTi cells are identified as CD127⁺CD3⁺CD4⁺. Their development is ROR γ t-dependent, they originate in the fetal liver, and they are found in fetal lymphoid nodes and the intestine (Kelly and Scollay, 1992; Mebius et al., 1997; Yoshida et al., 1999; Eberl et al., 2004; Finke, 2005). In humans, fetal LTi cells were first found in 2009 and recognized as Lin⁻ROR γ t⁺CD127⁺CD4⁻; they play a role similar to that of mouse LTi cells (Cupedo et al., 2009).

In mice, adult ILC3s are defined as CD45⁺Lin⁻Thy1⁺ROR γ t⁺, and they partially express CCR6 and NKp46 (Sanos et al., 2009; Takatori et al., 2009; Vonarbourg et al., 2010b; Song et al., 2015). ROR γ t, AHR, GATA3, and T-bet are required for their development (Luci et al., 2009; Klose et al., 2013; Hughes et al., 2014; Serafini et al., 2014). In humans, adult ILC3s are defined as Lin⁻CD127⁺CRTH2⁻CD117⁺; they also heterogeneously express NKp44, NKp46, CD56, and NKp30 (Crellin et al., 2010; Hoorweg et al., 2012; Glatzer et al., 2013). Upon stimulation with IL-1 β and IL-23, ILC3s express IL-17, IL-22, and granulocyte-macrophage colony-stimulating factor (GM-CSF) (Takatori et al., 2009; Crellin et al., 2010; Hoorweg et al., 2012; Song et al., 2015).

Adult ILC3s are the most heterogeneous ILCs. Depending on the level of the expressed NK receptor, e.g., NKp44, NKp46, or NKp30, ILC3s can be divided into NCR⁻ILC3s and NCR⁺ILC3s. ILC3s can also be divided according to the level of expression of CCR6 into CCR6⁻ ILC3s and CCR6⁺ ILC3s. Recently, it was shown that NCR engagement enables ILC3s to play a pro-inflammatory role (Glatzer et al., 2013); based on this an increasing numbers of researchers use the NCR status to classify the function of adult ILC3s. Similar markers and functions are found in both mouse and human ILC3s with the exception that mice do not express NKp44 (Killig et al., 2014).

In the mouse lung, ILC3s were initially reported by Centre et al. (2015), who found that 30% of ILCs were ILC3s, defined as Lin⁻CD90⁺CD127⁺ROR γ t⁺; almost 70% of ILC3s also co-express CCR6. IL-1 β and IL-23 have been shown to activate these cells. ILC3s were also identified as a major source of IL-22 produced in response to IL-23 stimulation (Van Maele et al., 2014). In the human lung, ILC3s are identified as Lin⁻CD127⁺CRTH2⁻CD117⁺, and are NCR⁻ or NCR⁺. NCR⁺ILC3s produce IL-22, TNF- α , IL-8, IL-2, and

GM-CSF upon stimulation (Carrega et al., 2015; De Grove et al., 2016) (Table 2).

ILC3S IN THE LUNG

ILC3s and infection

ILC3s play an essential role in the maintenance of mucosal barrier function because they produce effector cytokines, especially IL-22 and IL-17. IL-22 and IL-17 activate epidermal cells to produce antimicrobial molecules and protect the host from extracellular bacteria and fungi (Liang et al., 2006). IL-22 can also enhance the epithelial production of mucus-associated molecules (McAleer and Kolls, 2014). A protective role of ILC3s against infections in the digestive system has also been reported. During an intestinal infection with *Citrobacter rodentium*, the number of IL-22-producing ILC3s increased in the intestinal lamina propria (Cella et al., 2009; Sanos et al., 2009). Gladiator et al. found that ILC3s can also produce IL-17 that helps eliminate pathogens during fungal infection in mice, especially in the early phase of infection. (Gladiator et al., 2013). In 2014, Van Maele et al. reported the function of ILC3s in the lung. During *Streptococcus pneumoniae* infection, ILC3s rapidly accumulate in the lung tissue to produce IL-22 in a DC- and MyD88-dependent manner (Van Maele et al., 2014). Boosting lung ILC3 numbers might therefore represent an interesting strategy for fighting respiratory bacterial infections.

One study suggested that Toll-like receptor 5 (TLR5) signaling could activate ILCs (CD3⁻CD127⁺) and enhance the production of IL-17 and IL-22, which are crucial for anti-pathogen defenses in the mucous membrane of the intestine and the lung (Van Maele et al., 2010). This raises the interesting notion that TLR5 may activate ILC3s to reject the pathogen in the lung. Later, Van Maele et al. found that during *S. pneumoniae* infection, the TLR5 agonist flagellin accelerates and over-stimulates lung ILC3s to produce more IL-22 (Van Maele et al., 2014).

Klebsiella pneumoniae is a gram-negative bacterium that is highly resistant to antibiotics and is a common pathogen in pneumonia (Doorduyn et al., 2016). In 2014, Xu et al. found that IL-22-producing NK cells are required for optimal host defense in mouse models of *K. pneumoniae* infection (Xu et al., 2014). Recently, another group reported that following infection with *K. pneumoniae* in mice, inflammatory monocytes are immediately recruited to the lungs, where they produce TNF, which then increases the number of IL-17-producing ILC3s. IL-17A-dependent clearance of *K. pneumoniae* is impaired in monocyte- or TNF-depleted mouse models, whereas IL-17-producing ILC3s enhance monocyte-mediated bacterial clearance. These results indicate that ILC3s and monocytes participate in a positive feedback cycle that promotes the clearance of highly antibiotic-resistant bacterial pathogens from the lung (Xiong et al., 2016) (Fig. 4).

iILC2-derived ILC3-like cells also play a role in *Candida albicans* infections. iILC2s express an intermediate amount of ROR γ t, i.e., one that is significantly different from nILC2s but lower than that in ILC3 cells. A small proportion of freshly isolated iILC2s produces IL-17 upon stimulation with PMA and ionomycin (Huang et al., 2015). When cultured with TGF- β and IL-6, iILC2s become ILC3-like, produce IL-17, and lose the ability to produce IL-13. During *C. albicans* infection, iILC2 cells aid in the clearance of this pathogen. In the lungs of mice infected with *C. albicans*, transferred iILC2 cells become ILC3-like cells after 5 d; these ILC3-like cells produce IL-17 but not IL-13 (Huang et al., 2015). Thus, iILC2 cells can transform into ILC3-like cells *in vitro* and *in vivo*, and gain the ability to protect the host against *C. albicans* (Huang et al., 2015) (Fig. 1).

ILC3s and asthma

In addition to ILC2s, ILC3s are also involved in asthma. In an OVA-induced asthma murine model, Taube et al. found that IL-22 expression increased, and the IL-22 was mainly produced by innate lymphoid cells in the lungs, rather than by TH cells. OVA challenged IL-22-deficient mice suffered from much higher AHR. In contrast mice treated with IL-22 before OVA challenge displayed significantly reduced allergic airway inflammation. Based on these data, IL-22-producing ILC3s may participate in reducing allergic asthma pathology (Taube et al., 2011).

Obesity is a risk factor associated with asthma, and obese asthma patients respond poorly to typical anti-asthma medications, including corticosteroids (Sutherland et al., 2009); therefore, a distinct immune mechanism must be at play in obese asthmatics. Mice fed a high-fat diet become obese and exhibit AHR through an IL-17A and NKRP3-dependent pathway, and this AHR also occurs in obese *Rag1*^{-/-} mice (Kim et al., 2014). In this model, the number of CCR6⁺ IL-17A-producing ILC3s is elevated in the lung and macrophage-derived IL-1 directly causes AHR by stimulating this IL-17-producing ILC3 population (Kim et al., 2014).

Everaere et al. found a similar result where, compared with lean mice, the number of ILCs was increased in the lung of obese mice, and this effect was accompanied by eosinophil infiltration. Following an HDM challenge, the counts of ILC2s and ILC3s in the lung further increased, as did IL-33 and IL-1 β levels, whereas ILC markers in visceral adipose tissue decreased. In an obese mouse model with ILC depletion, the HDM-induced inflammatory profile of the airway was profoundly decreased, including reduced Th2 and Th17 infiltration (Everaere et al., 2016) (Fig. 4).

In humans, IL-17-producing ILCs are found in BAL fluid samples from asthma patients; their levels are increased in severe asthma patients compared with those in patients with mild asthma or control donors (Kim et al., 2014).

These results indicate that IL-22-producing-ILC3s may have an anti-asthma effect, whereas IL-17-producing ILC3s participate in the pathology of asthma, possibly providing a

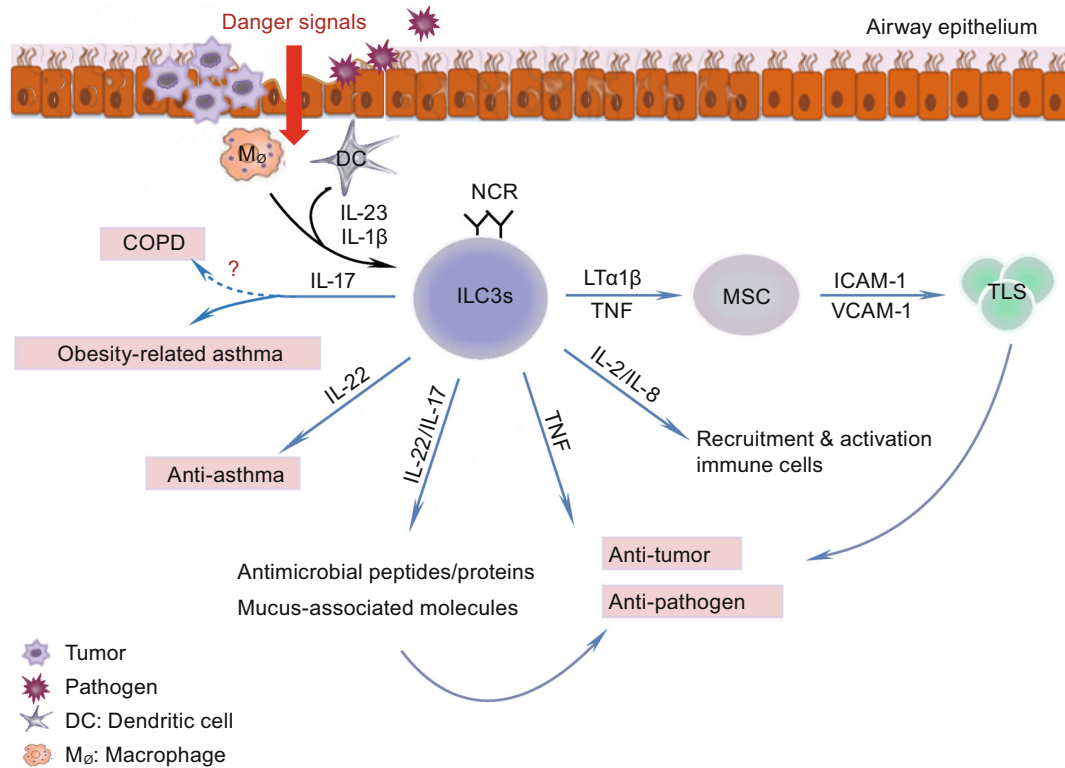


Figure 4. ILC3 functions in the lung. After receiving the danger signals from the airway epithelium upon pathogen and tumor cell invasion, DCs and macrophages release IL-1 β and IL-23, which activate ILC3s. Activated ILC3s release IL-17, IL-22, IL-8, IL-2, TNF, and LT α 1 β . IL-17 and IL-22 play a dual role: on the one hand, they stimulate the epithelium to produce antimicrobial peptides and proteins, and mucus-associated molecules to clear the pathogen and tumor cells to maintain homeostasis of the mucosa; on the other hand, they may aggravate the development of obesity-related asthma and COPD. IL-22-producing-ILC3s may have anti-asthma effects, whereas IL-17-producing ILC3s may participate in the pathology of asthma, especially in obesity-related asthma. IL-2 and IL-8 recruit neutrophils to the lung. LT α 1 β stimulates mesenchymal stem cells (MSCs) to express ICAM-1 and VCAM-1. These molecules participate in the formation of a tertiary lymphoid organ in the tumor. See text for details.

link between obesity and asthma. Further studies should be performed to help illuminate these potential connections.

ILC3s and COPD

IL-17A plays an essential role in the development of COPD. Since ILC3s have the ability to produce IL-17A it is therefore possible that ILC3s are linked with COPD. De Grove et al. (2016) found that in patients with COPD, the population of NCR⁺ILC3s comprises the largest subset of ILCs (De Grove et al., 2016). Bal et al. (2016) also found that NKp44⁻ILC3 levels were increased, whereas the numbers of ILC2s and NKp44⁺ ILC3s were significantly diminished in lung tissue from patients with severe COPD (Bal et al., 2016). This supports our hypothesis that IL-17-producing ILC3s may play a role in COPD; however, the authors suggested that the accumulation of NCR⁻ILC3s in COPD could be associated with the protective immunity of the host in response to bacterial respiratory tract infections that occur frequently in

patients with COPD. The involvement of ILC3s in COPD therefore requires further study (Fig. 4).

ILC3s and tumors

A dual effect of ILC3s on tumor immunity was suggested for intestinal tumors. On the one hand, IL-22 produced by ILC3s maintains mucosal integrity and clearance of pathogens and transformed cells. On the other hand, IL-22 activates the STAT3 cascade to enhance tumor generation (Kirchberger et al., 2013). Carrega et al. (2015) observed that NCR⁺ILC3s were enriched in non-small cell lung cancer (NSCLC) and that the proportion of NCR⁺ILC3s was positively associated with tumor stage. NCR⁺ILC3s were present in significantly higher amounts in stage I/II NSCLC tumors than in more tumors from more advanced stages. When stimulated, NCR⁺ILC3s, which had been freshly isolated from NSCLC tissues, produced IL-22, TNF- α , IL-8, and IL-2, but did not secrete IL-17. IL-22 maintains the integrity of epithelial cells

(Dudakov et al., 2015); TNF- α is a pro-inflammatory cytokine that exerts anti-tumor and anti-pathogen effects, and IL-8 and IL-2 enhance leukocyte recruitment and proliferation (Vaugh and Wilson, 2008; Boyman and Sprent, 2012). Based on the characteristics of the cytokines produced by NCR⁺ILC3s, it was concluded that these cells might play a role in anti-tumor defenses (Carrega et al., 2015).

As stated above, LTi is the prototype for ILC3s. LTi cells produce lymphotoxin α , lymphotoxin β , and TNF- α . They also stimulate stromal cells to produce vascular cell adhesion molecule 1 (VCAM-1) and intercellular adhesion molecule 1 (ICAM-1), which recruit the immune cells and form the fetal lymphoid node and Peyer's patches (Kelly and Scollay, 1992; Mebius et al., 1997; Yoshida et al., 1999; Eberl et al., 2004; Finke, 2005; Cupedo et al., 2009). Lung cancer-derived NCR⁺ILC3s express more lymphotoxin mRNA than their tonsil counterparts. Furthermore, lung cancer-derived NCR⁺ILC3s elicit significant up-regulation of ICAM-1 and VCAM-1 in mesenchymal stem cells in a lymphotoxin α , lymphotoxin β , and TNF- α dependent manner. Additionally, NCR⁺ILC3s preferentially reside at the edge of lymphoid structures associated with NSCLC, and the percentage of NCR⁺ILC3s is correlated with the density of tertiary lymphoid structures in the tumor region. These observations suggest that NCR⁺ILC3s might play a role in the formation and maintenance of these structures as well as lymphoid aggregates in tumor tissue (Carrega et al., 2015). Otherwise, NCR⁻ILC3s can gain pro-inflammatory properties by engaging NKp44, as the number of NCR⁺ILC3s is increased in the lung tumor region (Fig. 4). Whether the conversion of NCR⁻ILC3 to NCR⁺ILC3 cells contributes to this increased number and how the tumor microenvironment influences this conversion are questions that should be answered in future studies. Additionally, the question of whether IL-22-producing ILC3s enhance or inhibit tumors in the lung remains unresolved and should be studied further.

CONCLUSIONS

ILCs are attracting increasing attention on account of their distinct tissue-resident properties. Although it is known that ILCs are involved in pulmonary infection, asthma, COPD, fibrosis, and tumors in the lung, in-depth studies are still only in their infancy. The mechanisms of ILC activation, proliferation, and regulation in the lung are not clear; how exactly the pathological environment affects ILC function and how ILCs respond to the environment also remain unknown. Elucidation of these mechanisms is therefore an urgent matter, especially in pulmonary diseases. Answers to these questions will hopefully provide new clues for the treatment of these serious human diseases.

ACKNOWLEDGMENTS

This work was supported by the National Natural Science Foundation of China (Grant No. 81571534), and Youth Development Fund

of First Hospital of Jilin University (No. JDYY72016041). We are grateful to Ying Sun for critical reading of this manuscript. We sincerely apologize to the authors whose work was not cited in this review due to the space limitations.

ABBREVIATIONS

AHR, airway hyper-responsiveness; APC, antigen-presenting cell; Bcl11b, B cell leukemia/lymphoma 11b; BLF, bronchoalveolar lavage fluid; CCR6, C-C motif chemokine receptor 6; COPD, chronic obstructive pulmonary disease; CysLT1, cysteinyl leukotriene receptor 1; DC, dendritic cell; EPE, eosinophilic pleural effusion; G9a, lysine methyltransferase G9a; GATA3, GATA binding protein 3; GFP, green fluorescent protein; GM-CSF, granulocyte-macrophage colony-stimulating factor; HDM, house dust mite; HES, *Heligmosomoides polygyrus* excretory/secretory products; ICAM-1, intercellular adhesion molecule 1; IFN- γ , interferon- γ ; ILCs, innate lymphoid cells; IL-2R γ , common γ chain of the interleukin-2 receptor; IRF4, interferon regulatory factor 4; Lin, lineage; LTi, lymphoid tissue inducer; NCR, natural cytotoxicity triggering receptor; NK cell, natural killer cell; NSCLC, non-small cell lung cancer; OVA, ovalbumin; PSP, primary spontaneous pneumothorax; RAG, recombination-activating gene; ROR, retinoic acid receptor-related orphan receptor; TGF- β , transforming growth factor- β ; Th cells, T helper cells; TLR5, Toll-like receptor 5; TNF, tumor necrosis factor; TSLP, thymic stromal lymphopoietin; VCAM-1, vascular cell adhesion molecule-1

COMPLIANCE WITH ETHICS GUIDELINES

Hang Cheng, Chengyan Jin, Jing Wu, Shan Zhu, Yong-Jun Liu, and Jingtao Chen declare that they have no competing interest. This article does not contain any studies with human or animal subjects performed by any of the authors.

OPEN ACCESS

This article is distributed under the terms of the Creative Commons Attribution 4.0 International License (<http://creativecommons.org/licenses/by/4.0/>), which permits unrestricted use, distribution, and reproduction in any medium, provided you give appropriate credit to the original author(s) and the source, provide a link to the Creative Commons license, and indicate if changes were made.

REFERENCES

- Abt MC, Lewis BB, Caballero S, Xiong H, Carter RA, Susac B, Ling L, Leiner I, Pamer EG (2015) Innate Immune Defenses Mediated by Two ILC Subsets Are Critical for Protection against Acute *Clostridium difficile* Infection. *Cell Host Microbe* 18:27–37
- Bal SM, Bernink JH, Nagasawa M, Groot J, Shikhagaie MM, Golebski K, van Drunen CM, Lutter R, Jonkers RE, Hombrink P et al (2016) IL-1 β , IL-4 and IL-12 control the fate of group 2 innate lymphoid cells in human airway inflammation in the lungs. *Nat Immunol* 17:636–645

- Bando JK, Liang HE, Locksley RM (2015) Identification and distribution of developing innate lymphoid cells in the fetal mouse intestine. *Nat Immunol* 16:153–160
- Barlow JL, Bellosi A, Hardman CS, Drynan LF, Wong SH, Cruickshank JP, McKenzie AN (2012) Innate IL-13-producing nuocytes arise during allergic lung inflammation and contribute to airways hyperreactivity. *J Allergy Clin Immunol* 129(191–198):e191–e194
- Barnes PJ (2009) The cytokine network in chronic obstructive pulmonary disease. *Am J Respir Cell Mol Biol* 41:631–638
- Barnig C, Cernadas M, Dutille S, Liu X, Perrella MA, Kazani S, Wechsler ME, Israel E, Levy BD (2013) Lipoxin A4 regulates natural killer cell and type 2 innate lymphoid cell activation in asthma. *Sci Transl Med* 5:174ra126
- Bartemes KR, Iijima K, Kobayashi T, Kephart GM, McKenzie AN, Kita H (2012) IL-33-responsive lineage- CD25 + CD44(hi) lymphoid cells mediate innate type 2 immunity and allergic inflammation in the lungs. *J Immunol* 188:1503–1513
- Bartemes KR, Kephart GM, Fox SJ, Kita H (2014) Enhanced innate type 2 immune response in peripheral blood from patients with asthma. *J Allergy Clin Immunol* 134(671–678):e674
- Bernink JH, Peters CP, Munneke M, te Velde AA, Meijer SL, Weijer K, Hreggvidsdottir HS, Heinsbroek SE, Legrand N, Buskens CJ et al (2013) Human type 1 innate lymphoid cells accumulate in inflamed mucosal tissues. *Nat Immunol* 14:221–229
- Bernink JH, Krabbendam L, Germar K, de Jong E, Gronke K, Kofoed-Nielsen M, Munneke JM, Hazenberg MD, Villaudy J, Buskens CJ et al (2015) Interleukin-12 and -23 CONTROL PLASTICITY of CD127(+) Group 1 and Group 3 Innate lymphoid cells in the intestinal lamina propria. *Immunity* 43:146–160
- Boyman O, Sprent J (2012) The role of interleukin-2 during homeostasis and activation of the immune system. *Nat Rev Immunol* 12:180–190
- Buonocore S, Ahern PP, Uhlig HH, Ivanov II, Littman DR, Maloy KJ, Powrie F (2010) Innate lymphoid cells drive interleukin-23-dependent innate intestinal pathology. *Nature* 464:1371–1375
- Carrega P, Loiaco F, Di Carlo E, Scaramuccia A, Mora M, Conte R, Benelli R, Spaggiari GM, Cantoni C, Campana S et al (2015) NCR(+)ILC3 concentrate in human lung cancer and associate with intratumoral lymphoid structures. *Nat Commun* 6:8280
- Cella M, Fuchs A, Vermi W, Facchetti F, Otero K, Lennerz JK, Doherty JM, Mills JC, Colonna M (2009) A human natural killer cell subset provides an innate source of IL-22 for mucosal immunity. *Nature* 457:722–725
- Cella M, Otero K, Colonna M (2010) Expansion of human NK-22 cells with IL-7, IL-2, and IL-1beta reveals intrinsic functional plasticity. *Proc Natl Acad Sci USA* 107:10961–10966
- Chang YJ, Kim HY, Albacker LA, Baumgarth N, McKenzie AN, Smith DE, Dekruyff RH, Umetsu DT (2011) Innate lymphoid cells mediate influenza-induced airway hyper-reactivity independently of adaptive immunity. *Nat Immunol* 12:631–638
- Crellin NK, Trifari S, Kaplan CD, Cupedo T, Spits H (2010) Human NKp44+IL-22+ cells and LTi-like cells constitute a stable RORC + lineage distinct from conventional natural killer cells. *J Exp Med* 207:281–290
- Cupedo T, Crellin NK, Papazian N, Rombouts EJ, Weijer K, Grogan JL, Fibbe WE, Cornelissen JJ, Spits H (2009) Human fetal lymphoid tissue-inducer cells are interleukin 17-producing precursors to RORC+ CD127+ natural killer-like cells. *Nat Immunol* 10:66–74
- Dadi S, Chhangawala S, Whitlock BM, Franklin RA, Luo CT, Oh SA, Toure A, Pritykin Y, Huse M, Leslie CS et al (2016) Cancer immunosurveillance by tissue-resident innate lymphoid cells and innate-like T cells. *Cell* 164:365–377
- De Grove KC, Provoost S, Verhamme FM, Bracke KR, Joos GF, Maes T, Brusselle GG (2016) Characterization and quantification of innate lymphoid cell subsets in human lung. *PLoS ONE* 11:e0145961
- Deckers J, Branco Madeira F, Hammad H (2013) Innate immune cells in asthma. *Trends Immunol* 34:540–547
- Denney L, Byrne AJ, Shea TJ, Buckley JS, Pease JE, Herledan GM, Walker SA, Gregory LG, Lloyd CM (2015) Pulmonary epithelial cell-derived cytokine TGF-beta1 is a critical cofactor for enhanced innate lymphoid cell function. *Immunity* 43:945–958
- Doherty TA, Khorram N, Lund S, Mehta AK, Croft M, Broide DH (2013) Lung type 2 innate lymphoid cells express cysteinyl leukotriene receptor 1, which regulates TH2 cytokine production. *J Allergy Clin Immunol* 132:205–213
- Dolinay T, Kaminski N, Felgendreher M, Kim HP, Reynolds P, Watkins SC, Karp D, Uhlig S, Choi AM (2006) Gene expression profiling of target genes in ventilator-induced lung injury. *Physiol Genom* 26:68–75
- Doorduyn DJ, Rooijackers SH, van Schaik W, Bardeol BW (2016) Complement resistance mechanisms of *Klebsiella pneumoniae*. *Immunobiology* 221:1102–1109
- Drake LY, Kita H (2014) Group 2 innate lymphoid cells in the lung. *Adv Immunol* 124:1–16
- Drake LY, Iijima K, Kita H (2014) Group 2 innate lymphoid cells and CD4+ T cells cooperate to mediate type 2 immune response in mice. *Allergy* 69:1300–1307
- Drake LY, Iijima K, Bartemes K, Kita H (2016) Group 2 innate lymphoid cells promote an early antibody response to a respiratory antigen in mice. *J Immunol* 197:1335–1342
- Dudakov JA, Hanash AM, van den Brink MR (2015) Interleukin-22: immunobiology and pathology. *Annu Rev Immunol* 33:747–785
- Eberl G, Marmon S, Sunshine MJ, Rennert PD, Choi Y, Littman DR (2004) An essential function for the nuclear receptor RORgamma (t) in the generation of fetal lymphoid tissue inducer cells. *Nat Immunol* 5:64–73
- Eberl G, Colonna M, Di Santo JP, McKenzie AN (2015) Innate lymphoid cells: a new paradigm in immunology. *Science* 348:aaa6566
- Enomoto Y, Orihara K, Takamasu T, Matsuda A, Gon Y, Saito H, Ra C, Okayama Y (2009) Tissue remodeling induced by hypersecreted epidermal growth factor and amphiregulin in the airway after an acute asthma attack. *J Allergy Clin Immunol* 124(913–920):e911–e917
- Everaere L, Ait-Yahia S, Molendi-Coste O, Vorng H, Quemener S, LeVu P, Fleury S, Bouchaert E, Fan Y, Duez C et al (2016) Innate lymphoid cells contribute to allergic airway disease exacerbation by obesity. *J Allergy Clin Immunol* 138(5):1309–1318
- Fan X, Rudensky AY (2016) Hallmarks of tissue-resident lymphocytes. *Cell* 164:1198–1211
- Finke D (2005) Fate and function of lymphoid tissue inducer cells. *Curr Opin Immunol* 17:144–150

- Fort MM, Cheung J, Yen D, Li J, Zurawski SM, Lo S, Menon S, Clifford T, Hunte B, Lesley R et al (2001) IL-25 induces IL-4, IL-5, and IL-13 and Th2-associated pathologies in vivo. *Immunity* 15:985–995
- Fuchs A, Vermi W, Lee JS, Lonardi S, Giffillan S, Newberry RD, Cella M, Colonna M (2013) Intraepithelial type 1 innate lymphoid cells are a unique subset of IL-12- and IL-15-responsive IFN- γ -producing cells. *Immunity* 38:769–781
- Fukumoto J, Harada C, Kawaguchi T, Suetsugu S, Maeyama T, Inoshima I, Hamada N, Kuwano K, Nakanishi Y (2010) Amphiregulin attenuates bleomycin-induced pneumopathy in mice. *Am J Physiol Lung Cell Mol Physiol* 298:L131–L138
- Gasteiger G, Fan X, Dikiy S, Lee SY, Rudensky AY (2015) Tissue residency of innate lymphoid cells in lymphoid and nonlymphoid organs. *Science* 350:981–985
- Gentek R, Munneke JM, Helbig C, Blom B, Hazenberg MD, Spits H, Amsen D (2013) Modulation of signal strength switches notch from an inducer of T cells to an inducer of ILC2. *Front Immunol* 4:334
- Gladiator A, Wangler N, Trautwein-Weidner K, LeibundGut-Landmann S (2013) Cutting edge: IL-17-secreting innate lymphoid cells are essential for host defense against fungal infection. *J Immunol* 190:521–525
- Glatzer T, Killig M, Meisig J, Ommert I, Luetke-Eversloh M, Babic M, Paclik D, Bluthgen N, Seidl R, Seifarth C et al (2013) ROR γ mat(+) innate lymphoid cells acquire a proinflammatory program upon engagement of the activating receptor NKp44. *Immunity* 38:1223–1235
- Gold MJ, Antignano F, Halim TY, Hirota JA, Blanchet MR, Zaph C, Takei F, McNagny KM (2014) Group 2 innate lymphoid cells facilitate sensitization to local, but not systemic, TH2-inducing allergen exposures. *J Allergy Clin Immunol* 133:1142–1148
- Grainger JR, Smith KA, Hewitson JP, Mcorley HJ, Harcus Y, Filbey KJ, Finney CA, Greenwood EJ, Knox DP, Wilson MS (2010) Helminth secretions induce de novo T cell Foxp3 expression and regulatory function through the TGF- β pathway. *J Exp Med* 207:2331–2341
- Halim TY, Krauss RH, Sun AC, Takei F (2012a) Lung natural helper cells are a critical source of Th2 cell-type cytokines in protease allergen-induced airway inflammation. *Immunity* 36:451–463
- Halim TY, MacLaren A, Romanish MT, Gold MJ, McNagny KM, Takei F (2012b) Retinoic-acid-receptor-related orphan nuclear receptor alpha is required for natural helper cell development and allergic inflammation. *Immunity* 37:463–474
- Halim TY, Steer CA, Matha L, Gold MJ, Martinez-Gonzalez I, McNagny KM, McKenzie AN, Takei F (2014) Group 2 innate lymphoid cells are critical for the initiation of adaptive T helper 2 cell-mediated allergic lung inflammation. *Immunity* 40:425–435
- Halim TY, Hwang YY, Scanlon ST, Zaghouani H, Garbi N, Fallon PG, McKenzie AN (2015) Group 2 innate lymphoid cells license dendritic cells to potentiate memory T2 cell responses. *Nat Immunol* 17:57–64
- Hams E, Armstrong ME, Barlow JL, Saunders SP, Schwartz C, Cooke G, Fahy RJ, Crotty TB, Hirani N, Flynn RJ et al (2014) IL-25 and type 2 innate lymphoid cells induce pulmonary fibrosis. *Proc Natl Acad Sci USA* 111:367–372
- Hansen G, Berry G, DeKruyff RH, Umetsu DT (1999) Allergen-specific Th1 cells fail to counterbalance Th2 cell-induced airway hyperreactivity but cause severe airway inflammation. *J Clin Invest* 103:175–183
- Held W, Kijima M, Angelov G, Bessoles S (2011) The function of natural killer cells: education, reminders and some good memories. *Curr Opin Immunol* 23:228–233
- Hesslein DG, Lanier LL (2011) Transcriptional control of natural killer cell development and function. *Adv Immunol* 109:45–85
- Holt PG, Strickland DH, Wikstrom ME, Jahnsen FL (2008) Regulation of immunological homeostasis in the respiratory tract. *Nat Rev Immunol* 8:142–152
- Hong JY, Bentley JK, Chung Y, Lei J, Steenrod JM, Chen Q, Sajjan US, Hershenson MB (2014) Neonatal rhinovirus induces mucous metaplasia and airways hyperresponsiveness through IL-25 and type 2 innate lymphoid cells. *J Allergy Clin Immunol* 134:429–439
- Hoorweg K, Peters CP, Cornelissen F, Aparicio-Domingo P, Papazian N, Kazemier G, Mjosberg JM, Spits H, Cupedo T (2012) Functional differences between human NKp44(-) and NKp44(+) RORC(+) innate lymphoid cells. *Front Immunol* 3:72
- Huang Y, Guo L, Qiu J, Chen X, Hu-Li J, Siebenlist U, Williamson PR, Urban JF Jr, Paul WE (2015) IL-25-responsive, lineage-negative KLRG1(hi) cells are multipotential 'inflammatory' type 2 innate lymphoid cells. *Nat Immunol* 16:161–169
- Hughes T, Briercheck EL, Freud AG, Trotta R, McClory S, Scoville SD, Keller K, Deng Y, Cole J, Harrison N et al (2014) The transcription factor AHR prevents the differentiation of a stage 3 innate lymphoid cell subset to natural killer cells. *Cell Rep* 8:150–162
- Hutchinson J, Fogarty A, Hubbard R, McKeever T (2015) Global incidence and mortality of idiopathic pulmonary fibrosis: a systematic review. *Eur Respir J* 46:795–806
- Iijima K, Kobayashi T, Hara K, Kephart GM, Ziegler SF, McKenzie AN, Kita H (2014) IL-33 and thymic stromal lymphopoietin mediate immune pathology in response to chronic airborne allergen exposure. *J Immunol* 193:1549–1559
- Jia Y, Fang X, Zhu X, Bai C, Zhu L, Jin M, Wang X, Hu M, Tang R, Chen Z (2016) IL-13+ Type 2 innate lymphoid cells correlate with asthma control status and treatment response. *Am J Respir Cell Mol Biol* 55:675–683
- Kalomenidis I, Light RW (2003) Eosinophilic pleural effusions. *Curr Opin Pulm Med* 9:254–260
- Karta MR, Broide DH, Doherty TA (2016) Insights into Group 2 innate lymphoid cells in human airway disease. *Curr Allergy Asthma Rep* 16:8
- Kearley J, Silver JS, Sanden C, Liu Z, Berlin AA, White N, Mori M, Pham TH, Ward CK, Criner GJ et al (2015) Cigarette smoke silences innate lymphoid cell function and facilitates an exacerbated type I interleukin-33-dependent response to infection. *Immunity* 42:566–579
- Kelly KA, Scollay R (1992) Seeding of neonatal lymph nodes by T cells and identification of a novel population of CD3-CD4+ cells. *Eur J Immunol* 22:329–334
- Killig M, Glatzer T, Romagnani C (2014) Recognition strategies of group 3 innate lymphoid cells. *Front Immunol* 5:142
- Kim HY, Chang YJ, Subramanian S, Lee HH, Albacker LA, Matangkasombut P, Savage PB, McKenzie AN, Smith DE, Rottman JB et al (2012) Innate lymphoid cells responding to IL-33 mediate airway hyperreactivity independently of adaptive immunity. *J Allergy Clin Immunol* 129(216–227):e211–e216

- Kim BS, Siracusa MC, Saenz SA, Noti M, Monticelli LA, Sonnenberg GF, Hepworth MR, Van Voorhees AS, Comeau MR, Artis D (2013) TSLP elicits IL-33-independent innate lymphoid cell responses to promote skin inflammation. *Sci Transl Med* 5:170ra116
- Kim HY, Lee HJ, Chang YJ, Pichavant M, Shore SA, Fitzgerald KA, Iwakura Y, Israel E, Bolger K, Faul J et al (2014) Interleukin-17-producing innate lymphoid cells and the NLRP3 inflammasome facilitate obesity-associated airway hyperreactivity. *Nat Med* 20:54–61
- Kim J, Kwon J, Kim M, Do J, Lee D, Han H (2016) IL-1 is a critical regulator of group 2 innate lymphoid cell function and plasticity. *Polym J* 17:646–655
- Kirchberger S, Royston DJ, Boulard O, Thornton E, Franchini F, Szabady RL, Harrison O, Powrie F (2013) Innate lymphoid cells sustain colon cancer through production of interleukin-22 in a mouse model. *J Exp Med* 210:917–931
- Klein Wolterink RG, Kleinjan A, van Nimwegen M, Bergen I, de Bruijn M, Levani Y, Hendriks RW (2012) Pulmonary innate lymphoid cells are major producers of IL-5 and IL-13 in murine models of allergic asthma. *Eur J Immunol* 42:1106–1116
- KleinJan A, Klein Wolterink RG, Levani Y, de Bruijn MJ, Hoogsteden HC, van Nimwegen M, Hendriks RW (2014) Enforced expression of Gata3 in T cells and group 2 innate lymphoid cells increases susceptibility to allergic airway inflammation in mice. *J Immunol* 192:1385–1394
- Klose CS, Kiss EA, Schwierzeck V, Ebert K, Hoyler T, d'Hargues Y, Goppert N, Croxford AL, Waisman A, Tanriver Y et al (2013) A T-bet gradient controls the fate and function of CCR6-RORgammat+innate lymphoid cells. *Nature* 494:261–265
- Klose CS, Flach M, Mohle L, Rogell L, Hoyler T, Ebert K, Fabiunke C, Pfeifer D, Sexl V, Fonseca-Pereira D et al (2014) Differentiation of type 1 ILCs from a common progenitor to all helper-like innate lymphoid cell lineages. *Cell* 157:340–356
- Kolb M, Margetts PJ, Anthony DC, Pitossi F, Gaudie J (2001) Transient expression of IL-1beta induces acute lung injury and chronic repair leading to pulmonary fibrosis. *J Clin Invest* 107:1529–1536
- Kopf M, Schneider C, Nobs SP (2015) The development and function of lung-resident macrophages and dendritic cells. *Nat Immunol* 16:36–44
- Kwon BI, Hong S, Shin K, Choi EH, Hwang JJ, Lee SH (2013) Innate type 2 immunity is associated with eosinophilic pleural effusion in primary spontaneous pneumothorax. *Am J Respir Crit Care Med* 188:577–585
- Lai DM, Shu Q, Fan J (2016) The origin and role of innate lymphoid cells in the lung. *Mil Med Res* 3:25
- Li D, Guabiraba R, Besnard AG, Komai-Koma M, Jabir MS, Zhang L, Graham GJ, Kurowska-Stolarska M, Liew FY, McSharry C et al (2014) IL-33 promotes ST2-dependent lung fibrosis by the induction of alternatively activated macrophages and innate lymphoid cells in mice. *J Allergy Clin Immunol* 134(1422–1432): e1411
- Liang SC, Tan XY, Luxenberg DP, Karim R, Dunussi-Joannopoulos K, Collins M, Fouser LA (2006) Interleukin (IL)-22 and IL-17 are coexpressed by Th17 cells and cooperatively enhance expression of antimicrobial peptides. *J Exp Med* 203:2271–2279
- Licona-Limon P, Kim LK, Palm NW, Flavell RA (2013) TH2, allergy and group 2 innate lymphoid cells. *Nat Immunol* 14:536–542
- Lim AI, Menegatti S, Bustamante J, Le Bourhis L, Allez M, Rogge L, Casanova JL, Yssel H, Di Santo JP (2016) IL-12 drives functional plasticity of human group 2 innate lymphoid cells. *J Exp Med* 213:569–583
- Liu B, Lee JB, Chen CY, Hershey GK, Wang YH (2015a) Collaborative interactions between type 2 innate lymphoid cells and antigen-specific CD4+ Th2 cells exacerbate murine allergic airway diseases with prominent eosinophilia. *J Immunol* 194:3583–3593
- Liu J, Wu J, Qi F, Zeng S, Xu L, Hu H, Wang D, Liu B (2015b) Natural helper cells contribute to pulmonary eosinophilia by producing IL-13 via IL-33/ST2 pathway in a murine model of respiratory syncytial virus infection. *Int Immunopharmacol* 28:337–343
- Luci C, Reynders A, Ivanov II, Cognet C, Chiche L, Chasson L, Hardwigsen J, Anguiano E, Bancheureau J, Chaussabel D et al (2009) Influence of the transcription factor RORgammat on the development of Nkp46+ cell populations in gut and skin. *Nat Immunol* 10:75–82
- Maizels RM, Hewitson JP, Smith KA (2012) Susceptibility and immunity to helminth parasites. *Curr Opin Immunol* 24:459–466
- Martinez-Gonzalez I, Matha L, Steer CA, Ghaedi M, Poon GF, Takei F (2016) Allergen-experienced Group 2 innate lymphoid cells acquire memory-like properties and enhance allergic lung inflammation. *Immunity* 45:198–208
- Massacand JC, Stettler RC, Meier R, Humphreys NE, Grecis RK, Marsland BJ, Harris NL (2009) Helminth products bypass the need for TSLP in Th2 immune responses by directly modulating dendritic cell function. *Proc Natl Acad Sci USA* 106:13968–13973
- McAleer JP, Kolls JK (2014) Directing traffic: IL-17 and IL-22 coordinate pulmonary immune defense. *Immunol Rev* 260:129–144
- McHedlidze T, Kindermann M, Neves AT, Voehringer D, Neurath MF, Wirtz S (2016) IL-27 suppresses type 2 immune responses in vivo via direct effects on group 2 innate lymphoid cells. *Mucosal Immunol* 3:1384–1394
- McSorley HJ, Maizels RM (2012) Helminth infections and host immune regulation. *Clin Microbiol Rev* 25:585–608
- McSorley HJ, Blair NF, Smith KA, McKenzie AN, Maizels RM (2014) Blockade of IL-33 release and suppression of type 2 innate lymphoid cell responses by helminth secreted products in airway allergy. *Mucosal Immunol* 7:1068–1078
- McSorley HJ, Blair NF, Robertson E, Maizels RM (2015) Suppression of OVA-alum induced allergy by Heligmosomoides polygyrus products is MyD88-, TRIF-, regulatory T- and B cell-independent, but is associated with reduced innate lymphoid cell activation. *Exp Parasitol* 158:8–17
- Mebius RE, Rennert P, Weissman IL (1997) Developing lymph nodes collect CD4+CD3- LTbeta+ cells that can differentiate to APC, NK cells, and follicular cells but not T or B cells. *Immunity* 7:493–504
- Meylan F, Hawley ET, Barron L, Barlow JL, Penumetcha P, Pelletier M, Sciume G, Richard AC, Hayes ET, Gomez-Rodriguez J et al (2014) The TNF-family cytokine TL1A promotes allergic immunopathology through group 2 innate lymphoid cells. *Mucosal Immunol* 7:958–968

- Mjosberg JM, Trifari S, Crellin NK, Peters CP, van Drunen CM, Piet B, Fokkens WJ, Cupedo T, Spits H (2011) Human IL-25- and IL-33-responsive type 2 innate lymphoid cells are defined by expression of CRTH2 and CD161. *Nat Immunol* 12:1055–1062
- Mjosberg J, Bernink J, Golebski K, Karrich JJ, Peters CP, Blom B, te Velde AA, Fokkens WJ, van Drunen CM, Spits H (2012) The transcription factor GATA3 is essential for the function of human type 2 innate lymphoid cells. *Immunity* 37:649–659
- Mohapatra A, Van Dyken SJ, Schneider C, Nussbaum JC, Liang HE, Locksley RM (2016) Group 2 innate lymphoid cells utilize the IRF4-IL-9 module to coordinate epithelial cell maintenance of lung homeostasis. *Mucosal Immunol* 9:275–286
- Montaldo E, Teixeira-Alves LG, Glatzer T, Durek P, Stervbo U, Hamann W, Babic M, Paclik D, Stölzel K, Gröne J (2014) Human RORγt(+)CD34(+) cells are lineage-specified progenitors of group 3 RORγt(+) innate lymphoid cells. *Immunity* 41:988–1000
- Monticelli LA, Sonnenberg GF, Abt MC, Alenghat T, Ziegler CG, Doering TA, Angelosanto JM, Laidlaw BJ, Yang CY, Sathaliyawala T et al (2011) Innate lymphoid cells promote lung-tissue homeostasis after infection with influenza virus. *Nat Immunol* 12:1045–1054
- Monticelli LA, Buck MD, Flamar AL, Saenz SA, Tait Wojno ED, Yudanin NA, Osborne LC, Hepworth MR, Tran SV, Rodewald HR et al (2016) Arginase 1 is an innate lymphoid-cell-intrinsic metabolic checkpoint controlling type 2 inflammation. *Nat Immunol* 17:656–665
- Moro K (2010) Innate production of TH2 cytokines by adipose tissue-associated c-kit+Sca-1+ lymphoid cells. *Nature* 463:540–544
- Moro K, Yamada T, Tanabe M, Takeuchi T, Ikawa T, Kawamoto H, Furusawa J, Ohtani M, Fujii H, Koyasu S (2010) Innate production of T(H)2 cytokines by adipose tissue-associated c-Kit(+)Sca-1(+) lymphoid cells. *Nature* 463:540–544
- Moro K, Kabata H, Tanabe M, Koga S, Takeno N, Mochizuki M, Fukunaga K, Asano K, Betsuyaku T, Koyasu S (2016) Interferon and IL-27 antagonize the function of group 2 innate lymphoid cells and type 2 innate immune responses. *Nat Immunol* 17:76–86
- Nagakumar P, Denney L, Fleming L, Bush A, Lloyd CM, Saglani S (2016) Type 2 innate lymphoid cells in induced sputum from children with severe asthma. *J Allergy Clin Immunol* 137(624–626):e626
- Neill DR, Wong SH, Bellosi A, Flynn RJ, Daly M, Langford TK, Bucks C, Kane CM, Fallon PG, Pannell R et al (2010) Nuocytes represent a new innate effector leukocyte that mediates type-2 immunity. *Nature* 464:1367–1370
- Paul WE, Zhu J (2010) How are T(H)2-type immune responses initiated and amplified? *Nat Rev Immunol* 10:225–235
- Philip NH, Artis D (2013) New friendships and old feuds: relationships between innate lymphoid cells and microbial communities. *Immunol Cell Biol* 91:225–231
- Price AE, Liang HE, Sullivan BM, Reinhardt RL, Eislely CJ, Erle DJ, Locksley RM (2010) Systemically dispersed innate IL-13-expressing cells in type 2 immunity. *Proc Natl Acad Sci USA* 107:11489–11494
- Rankin LC, Groom JR, Chopin M, Herold MJ, Walker JA, Mielke LA, McKenzie AN, Carotta S, Nutt SL, Belz GT (2013) The transcription factor T-bet is essential for the development of NKp46+ innate lymphocytes via the Notch pathway. *Nat Immunol* 14:389–395
- Rankin LC, Girard-Madoux MJ, Seillet C, Mielke LA, Kerdiles Y, Fenis A, Wieduwild E, Putoczki T, Mondot S, Lantz O et al (2016) Complementarity and redundancy of IL-22-producing innate lymphoid cells. *Nat Immunol* 17:179–186
- Renauld JC (2001) New insights into the role of cytokines in asthma. *J Clin Pathol* 54:577–589
- Salimi M, Ogg G (2014) Innate lymphoid cells and the skin. *BMC Dermatol* 14:18
- Sanos SL, Bui VL, Mortha A, Oberle K, Heners C, Johnner C, Diefenbach A (2009) RORγt and commensal microflora are required for the differentiation of mucosal interleukin 22-producing NKp46+ cells. *Nat Immunol* 10:83–91
- Sawa S, Cherrier M, Lochner M, Satohtakayama N, Fehling HJ, Langa F, Santo JPD, Eberl G (2010) Lineage relationship analysis of RORγt+ innate lymphoid cells. *Science* 330:665–669
- Scanlon ST, McKenzie AN (2012) Type 2 innate lymphoid cells: new players in asthma and allergy. *Curr Opin Immunol* 24:707–712
- Serafini N, Klein Wolterink RG, Satoh-Takayama N, Xu W, Vossenherrich CA, Hendriks RW, Di Santo JP (2014) Gata3 drives development of RORγt+ group 3 innate lymphoid cells. *J Exp Med* 211:199–208
- Silver JS, Kearley J, Copenhaver AM, Sanden C, Mori M, Yu L, Pritchard GH, Berlin AA, Hunter CA, Bowler R et al (2016a) Inflammatory triggers associated with exacerbations of COPD orchestrate plasticity of group 2 innate lymphoid cells in the lungs. *Nat Immunol* 17:626–635
- Silver JS, Kearley J, Copenhaver AM, Sanden C, Mori M, Yu L, Pritchard GH, Berlin AA, Hunter CA, Bowler R et al (2016b) Inflammatory triggers associated with exacerbations of COPD orchestrate plasticity of group 2 innate lymphoid cells in the lungs. *Nat Immunol* 17:626–635
- Smith SG, Chen R, Kjarsgaard M, Huang C, Oliveria JP, O'Byrne PM, Gauvreau GM, Boulet LP, Lemiere C, Martin J et al (2016) Increased numbers of activated group 2 innate lymphoid cells in the airways of patients with severe asthma and persistent airway eosinophilia. *J Allergy Clin Immunol* 137(75–86):e78
- Song C, Lee JS, Gilfillan S, Robinette ML, Newberry RD, Stappenbeck TS, Mack M, Cella M, Colonna M (2015) Unique and redundant functions of NKp46 + ILC3s in models of intestinal inflammation. *J Exp Med* 212:1869–1882
- Spits H, Cupedo T (2012) Innate lymphoid cells: emerging insights in development, lineage relationships, and function. *Annu Rev Immunol* 30:647–675
- Spits H, Di Santo JP (2011) The expanding family of innate lymphoid cells: regulators and effectors of immunity and tissue remodeling. *Nat Immunol* 12:21–27
- Spits H, Artis D, Colonna M, Diefenbach A, Di Santo JP, Eberl G, Koyasu S, Locksley RM, McKenzie AN, Mebius RE et al (2013) Innate lymphoid cells—a proposal for uniform nomenclature. *Nat Rev Immunol* 13:145–149
- Spooner CJ, Lesch J, Yan D, Khan AA, Abbas A, Ramirez-Carrozzi V, Zhou M, Soriano R, Eastham-Anderson J, Diehl L et al (2013) Specification of type 2 innate lymphocytes by the transcriptional determinant Gfi1. *Nat Immunol* 14:1229–1236

- Stier MT, Bloodworth MH, Toki S, Newcomb DC, Goleniewska K, Boyd KL, Qitalig M, Hotard AL, Moore ML, Hartert TV et al (2016) Respiratory syncytial virus infection activates IL-13-producing group 2 innate lymphoid cells through thymic stromal lymphopoietin. *J Allergy Clin Immunol* 138:814–824
- Sutherland ER, Lehman EB, Teodorescu M, Wechsler ME, National Heart, Lung and Blood Institute's Asthma Clinical Research Network (2009) Body mass index and phenotype in subjects with mild-to-moderate persistent asthma. *J Allergy Clin Immunol* 123:1328–1334
- Tait Wojno ED, Monticelli LA, Tran SV, Alenghat T, Osborne LC, Thome JJ, Willis C, Budelsky A, Farber DL, Artis D (2015) The prostaglandin D2 receptor CRTH2 regulates accumulation of group 2 innate lymphoid cells in the inflamed lung. *Mucosal Immunol* 8:1313–1323
- Takatori H, Kanno Y, Watford WT, Tato CM, Weiss G, Ivanov II, Littman DR, O'Shea JJ (2009) Lymphoid tissue inducer-like cells are an innate source of IL-17 and IL-22. *J Exp Med* 206:35–41
- Taniguchi A, Miyahara N, Waseda K, Kurimoto E, Fujii U, Tanimoto Y, Kataoka M, Yamamoto Y, Gelfand EW, Yamamoto H et al (2015) Contrasting roles for the receptor for advanced glycation end-products on structural cells in allergic airway inflammation vs. airway hyperresponsiveness. *Am J Physiol Lung Cell Mol Physiol* 309:L789–L800
- Taube C, Tertilt C, Gyulveszi G, Dehzad N, Kreymborg K, Schneeweiss K, Michel E, Reuter S, Renaud JC, Arnold-Schild D et al (2011) IL-22 is produced by innate lymphoid cells and limits inflammation in allergic airway disease. *PLoS ONE* 6:e21799
- Thawer S, Auret J, Schnoeller C, Chetty A, Smith K, Darby M, Roberts L, Mackay RM, Whitwell HJ, Timms JF et al (2016) Surfactant protein-D is essential for immunity to helminth infection. *PLoS Pathog* 12:e1005461
- Turner JE, Morrison PJ, Wilhelm C, Wilson M, Ahlfors H, Renaud JC, Panzer U, Helmbly H, Stockinger B (2013) IL-9-mediated survival of type 2 innate lymphoid cells promotes damage control in helminth-induced lung inflammation. *J Exp Med* 210:2951–2965
- Van Maele L, Carnoy C, Cayet D, Songhet P, Dumoutier L, Ferrero I, Janot L, Erard F, Bertout J, Leger H et al (2010) TLR5 signaling stimulates the innate production of IL-17 and IL-22 by CD3(neg) CD127 + immune cells in spleen and mucosa. *J Immunol* 185:1177–1185
- Van Maele L, Carnoy C, Cayet D, Ivanov S, Porte R, Deruy E, Chabalgoity JA, Renaud JC, Eberl G, Benecke AG et al (2014) Activation of Type 3 innate lymphoid cells and interleukin 22 secretion in the lungs during *Streptococcus pneumoniae* infection. *J Infect Dis* 210:493–503
- Vonarbourg C, Mortha A, Bui VL, Hernandez PP, Kiss EA, Hoyle T, Flach M, Bengsch B, Thimme R, Holscher C et al (2010a) Progressive loss of ROR γ t expression confers distinct functional fates to natural killer cell receptor-expressing ROR γ t + innate lymphocytes. *Immunity* 33:736–751
- Vonarbourg C, Mortha A, Bui VL, Hernandez PP, Kiss EA, Hoyle T, Flach M, Bengsch B, Thimme R, Holscher C et al (2010b) Regulated expression of nuclear receptor ROR γ confers distinct functional fates to NK cell receptor-expressing ROR γ mat(+) innate lymphocytes. *Immunity* 33:736–751
- Vosshenrich CA, Ranson T, Samson SI, Corcuff E, Colucci F, Rosmaraki EE, Di SJ (2005) Roles for common cytokine receptor gamma-chain-dependent cytokines in the generation, differentiation, and maturation of NK cell precursors and peripheral NK cells in vivo. *J Immunol* 174:1213–1221
- Walker JA, Oliphant CJ, Englezakis A, Yu Y, Clare S, Rodewald HR, Belz G, Liu P, Fallon PG, McKenzie AN (2015) Bcl11b is essential for group 2 innate lymphoid cell development. *J Exp Med* 212:875–882
- Waugh DJ, Wilson C (2008) The interleukin-8 pathway in cancer. *Clin Cancer Res* 14:6735–6741
- Wilhelm C, Hirota K, Stieglitz B, Van Snick J, Tolaini M, Lahl K, Sparwasser T, Helmbly H, Stockinger B (2011) An IL-9 fate reporter demonstrates the induction of an innate IL-9 response in lung inflammation. *Nat Immunol* 12:1071–1077
- Wohlfahrt T, Usherenko S, Englbrecht M, Dees C, Weber S, Beyer C, Gelse K, Distler O, Schett G, Distler JH et al (2016) Type 2 innate lymphoid cell counts are increased in patients with systemic sclerosis and correlate with the extent of fibrosis. *Ann Rheum Dis* 75:623–626
- Wynn TA (2011) Integrating mechanisms of pulmonary fibrosis. *J Exp Med* 208:1339–1350
- Xiong H, Keith JW, Samilo DW, Carter RA, Leiner IM, Pamer EG (2016) Innate lymphocyte/Ly6C(hi) Monocyte crosstalk promotes *Klebsiella pneumoniae* clearance. *Cell* 165:679–689
- Xu X, Weiss ID, Zhang HH, Singh SP, Wynn TA, Wilson MS, Farber JM (2014) Conventional NK cells can produce IL-22 and promote host defense in *Klebsiella pneumoniae* pneumonia. *J Immunol* 192:1778–1786
- Yasuda K, Muto T, Kawagoe T, Matsumoto M, Sasaki Y, Matsushita K, Taki Y, Futatsugi-Yumikura S, Tsutsui H, Ishii KJ et al (2012) Contribution of IL-33-activated type II innate lymphoid cells to pulmonary eosinophilia in intestinal nematode-infected mice. *Proc Natl Acad Sci U S A* 109:3451–3456
- Ying X, Su Z, Bie Q, Zhang P, Yang H, Wu Y, Xu Y, Wu J, Zhang M, Wang S et al (2016) Synergistically increased ILC2 and Th9 cells in lung tissue jointly promote the pathological process of asthma in mice. *Mol Med Rep* 13:5230–5240
- Yoshida H, Honda K, Shinkura R, Adachi S, Nishikawa S, Maki K, Ikuta K, Nishikawa SI (1999) IL-7 receptor alpha + CD3(-) cells in the embryonic intestine induces the organizing center of Peyer's patches. *Int Immunol* 11:643–655
- Yu X, Pappu R, Ramirez-Carrozzi V, Ota N, Caplazi P, Zhang J, Yan D, Xu M, Lee WP, Grogan JL (2014) TNF superfamily member TL1A elicits type 2 innate lymphoid cells at mucosal barriers. *Mucosal Immunol* 7:730–740
- Yu Y, Wang C, Clare S, Wang J, Lee SC, Brandt C, Burke S, Lu L, He D, Jenkins NA et al (2015) The transcription factor Bcl11b is specifically expressed in group 2 innate lymphoid cells and is essential for their development. *J Exp Med* 212:865–874
- Zhou W, Toki S, Zhang J, Goleniewska K, Newcomb DC, Cephus JY, Dulek DE, Bloodworth MH, Stier MT, Polosuhkin V et al (2016) Prostaglandin I2 Signaling and Inhibition of Group 2 Innate Lymphoid Cell Responses. *Am J Respir Crit Care Med* 193:31–42
- Zook EC, Ramirez K, Guo X, van der Voort G, Sigvardsson M, Svensson EC, Fu YX, Kee BL (2016) The ETS1 transcription factor is required for the development and cytokine-induced expansion of ILC2. *J Exp Med* 213:687–696