

## Role of *Metcalfa pruinosa* as a Vector for *Pseudomonas syringae* pv. *actinidiae*

Irene Donati, Sofia Mauri, Giampaolo Buriani, Antonio Cellini, and Francesco Spinelli\*

Department of Agricultural Sciences, Alma Mater Studiorum – University of Bologna, Viale Fanin 44, Bologna, Italy

(Received on April 3, 2017; Revised on July 6, 2017; Accepted on July 7, 2017)

**After 20 years of steady increase, kiwifruit industry faced a severe arrest due to the pandemic spread of the bacterial canker, caused by *Pseudomonas syringae* pv. *actinidiae* (Psa). The bacterium penetrates the host plant primarily via natural openings or wounds, and its spread is mainly mediated by atmospheric events and cultural activities. Since the role of sucking insects as vectors of bacterial pathogens is widely documented, we investigated the ability of *Metcalfa pruinosa* Say (1830), one of the most common kiwifruit pests, to transmit Psa to healthy plants in laboratory conditions. Psa could be isolated both from insects feeding over experimentally inoculated plants, and from insects captured in Psa-infected orchards. Furthermore, insects were able to transmit Psa from experimentally inoculated plants to healthy ones. In conclusion, the control of *M. pruinosa* is recommended in the framework of protection strategies against Psa.**

**Key words :** bacterial canker of kiwifruit, insect-mediated disease transmission, microscopical visualization

**Handling Associate Editor :** Oh, Chang-Sik

Over the past 20 years, the worldwide cultivation of kiwifruit has remarkably increased. Italy is the second largest kiwifruit producer after China, with a production of 507,000 tons in 2014, corresponding to 15% of the global production (FAO, 2017). However, yields and cultivation

arecages of kiwifruit have been severely reduced due to the pandemic spread of bacterial canker of kiwifruit since 2008 (Vanneste et al., 2011). The disease is caused by *Pseudomonas syringae* pv. *actinidiae* (Psa), a rod-shaped, Gram-negative, strictly aerobic and mobile bacterium (Takikawa et al., 1989), which affects both *Actinidia chinensis* and *A. deliciosa* (Donati et al., 2014). Psa penetrates host tissues through wounds or natural openings, such as stomata or lenticels (Spinelli et al., 2011). Once inside the apoplast, it is able to move in the plant vascular system, spreading systemically, and eventually leads to plant death. Psa spreads by rain, wind, insects, animals and agricultural activities (Vanneste et al., 2011).

Many cases of insect transmission have been studied so far, regarding fungi, bacteria, viruses and phytoplasmas. The pathogens may be transmitted accidentally by insect vectors, or, in some cases, develop a close symbiotic relationship that contributes to their spread, by enhancing bacterial viability or growth in the vectors, or their target specificity. It was estimated that 30-40% of the damage and yield were due to the direct or indirect effects of pathogens transmission by insects (Agrios, 2008). Insects can transmit pathogens over long distances from one cultivating area to the other ones (Brown et al., 2002). *Metcalfa pruinosa* Say (1830) (*Hemiptera: Flatidae*) is considered a very important invasive species in Europe, due to its highly gregarious behavior, motility and multiplication rates, and to its wide range of host plants, including *Actinidia* spp. (Grozea et al., 2011). After its accidental introduction to Europe from North America (Wilson and McPherson, 1981), the insect has become widespread due to its polyphagia and the absence of natural enemies (Grozea et al., 2015). *M. pruinosa* has a univoltine life cycle (i. e., it reproduces once per year), with wintering in the egg stage. Eggs are deposited in the bark crevices starting from August. Hatching takes place in May-July, and the insect completes its life cycle on the plants by late summer (Tremblay and Priore, 1994; Zangheri and Donadini, 1980). *M. pruinosa* feeds by sucking plant saps at all post-embryonic stages. Pre-adult forms

\*Corresponding author.

Phone) +39-51-2096436, FAX) +39-51-2096401

E-mail) francesco.spinelli3@unibo.it

© This is an Open Access article distributed under the terms of the Creative Commons Attribution Non-Commercial License (<http://creativecommons.org/licenses/by-nc/4.0>) which permits unrestricted noncommercial use, distribution, and reproduction in any medium, provided the original work is properly cited.

Articles can be freely viewed online at [www.ppjonline.org](http://www.ppjonline.org).

(neanids) differ from adults for the absence of wings, and preferably feed on the undersides of the leaves. Nymphs move from the leaves to the new branches and then return on the leaves for metamorphosis. *M. pruinosa* can contribute to spread a number of plant pathogens (Strauss, 2010). Besides, it produces a substantial amount of honeydew that may represent a growing substrate for bacterial pathogens and may also attract bees. Therefore, the latter may act as secondary vectors of the bacterial pathogen further increasing the disease pressure inside the orchard.

This study investigated the possible role of *M. pruinosa* to transmit Psa in controlled conditions.

## Materials and Methods

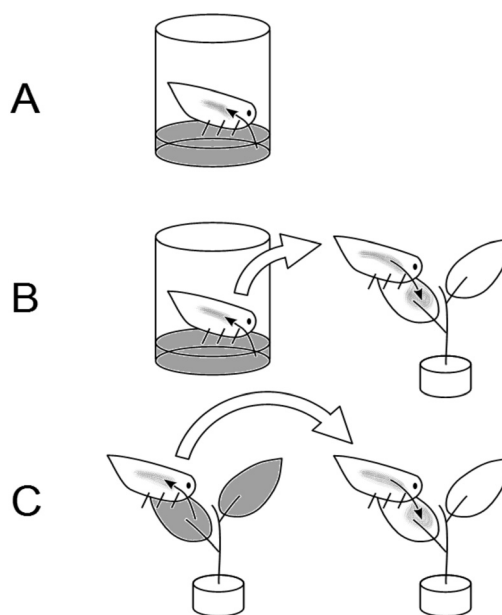
**Biological material.** In all the experiments, the Psa strain CFBP7286-GFPuv was used. This genetically engineered strain retains the virulence features of the wild type, is resistant to kanamycin, and expresses a green fluorescent protein facilitating its recognition and observation under UV light (Spinelli et al., 2011). The titer of bacterial suspensions was determined by plating 10  $\mu$ l drops of serial 1:10 dilutions on Luria-Bertani agar medium amended with cyclohexamide (100 mg l<sup>-1</sup>) and kanamycin (100 mg l<sup>-1</sup>).

Eight- to ten-month-old seedlings (approx. 30 cm high) derived from *A. deliciosa* cv. Hayward were used as the host plants. During the experiments, the plants were kept at 22°C, 70% RH and a light-dark cycle of 16:8 h of natural light.

*M. pruinosa* insects for laboratory experiments were captured from a kiwifruit orchard located near Bologna, Italy (44°33'00.72''N; 11°23'07.67''E). When not stated otherwise, the experiments were replicated in two consecutive seasons (2013-2014) from mid-May to early June.

**Psa population on field-captured insect samples.** Insects were captured from a kiwifruit orchard located near Faenza (Italy) in mid-June (juvenile stages) and at the end of July (adults). The percentage of insects contaminated with Psa was assessed by direct isolation and enumeration. The insects were singularly placed in tubes containing 5 mL of 10 mM MgSO<sub>4</sub> and washed for 20 minutes under agitation. The bacterial population was determined in the wash. The results of direct isolation were further confirmed by qPCR (Pushparajah et al., 2014) on 10 individuals per class, using primers F1 and R2 as described by Rees-George et al (2010).

**Artificial feeding of *M. pruinosa*.** The method was adapted from Tanne et al (2001). A sterilized feeding solution (10



**Fig. 1.** Experiment set up: (A) Artificial feeding of *Metcalfa pruinosa*. Individual insects, closed in an isolated chamber, feed on a Psa-inoculated solution (in grey). The population of Psa in the insect is subsequently determined. (B) Transmission of Psa from *M. pruinosa* adults, fed with a medium containing the bacterium, and subsequently transferred on healthy kiwifruit leaves. (C) Transmission of Psa from *M. pruinosa* adults, fed on experimentally inoculated kiwifruit plants, and subsequently transferred on healthy ones.

mM Tris, 1 mM EDTA, pH 8, amended with 50 g l<sup>-1</sup> sucrose) was inoculated with Psa to a titre of  $3 \times 10^8$  colony-forming units (cfu) ml<sup>-1</sup>. Bacterial survival in the feeding solution was checked for 96 h.

Insect chambers were made with 15 ml transparent tubes with their bottom side cut; the resulting opening was wrapped with anti-aphid net to allow gas exchange. After autoclave sterilization of the tube, 1 ml feeding solution was placed in the internal volume of the cap, and sealed with a layer of Parafilm to prevent the direct contact between the insect and the feeding solution. On the outer side of the cap, a green film was placed to mimic the foliar surface and attract the insect for feeding (Fig. 1A). Each tube contained one adult or one juvenile individual of *M. pruinosa* and a total of 50 insects were used for these experiments. The tubes were incubated at 22°C, 70% RH under light-dark cycle of 16:8 h. The insects were kept in the feeding tubes for 2, 4, 5, 6 or 9 days. Immediately after the feeding period, each insect was individually frozen in liquid nitrogen and stored at -80°C for subsequent analysis. Psa incidence and population were determined in the homogenate obtained from 12-20 insects per time point, by

plating tenfold successive dilutions on agarized medium.

### Microscopic visualization of *Psa* on *Metcalfa pruinosa*.

A sample of three insects, including adults and nymphs, was taken from the artificial feeding experiment on day 2, 4 and 5. The insects were dipped in liquid nitrogen and stored at  $-80^{\circ}\text{C}$ . After two weeks, they were sectioned longitudinally and observed under a binocular microscope to verify the presence of the fluorescent bacterium under a UV source (excitation wavelength of GFP-B: 460-500 nm, emission wavelength: 510-560 nm). These analyses were performed using a Nikon SMZ25 fluorescence microscope (Nikon Instruments Corporation, Tokyo, Japan), with an optical system provides zoom ratio of 25:1 (zoom range  $0.63\times - 15.75\times$ ), LED DIA light intensity control and epifluorescence filter cube selection.

**Transmission of *Psa* by *M. pruinosa*.** The first phase of this experiment (Fig. 1B) was a one-run explorative test of the ability of *M. pruinosa* fed on a *Psa*-containing medium to transmit the disease to healthy plants. Adult insects were artificially fed for 7 days as previously described, with an extract of *A. deliciosa* cv. Hayward leaves ( $30\text{ g l}^{-1}$  fresh tissue in  $10\text{ mM MgSO}_4$ ) containing  $10^6\text{ cfu ml}^{-1}$  *Psa*. After the artificial feeding, each insect was individually transferred in a chamber (3 cm diameter, 2 cm length, closed on one side with anti-aphid net) fixed on the adaxial surface of the healthy host plant leaves. The insects were kept in the chamber for 2 weeks, and the leaves were collected 4 weeks after the insect transfer, to allow the development of primary symptoms (leaf spots). The exposed leaf and the insects were surface sterilized by sequential washing in ethanol (70%), in NaClO (1%) and twice in sterile water, then they were ground in 5 and 1.5 ml, respectively, of sterile  $10\text{ mM MgSO}_4$ . The homogenate was used for the

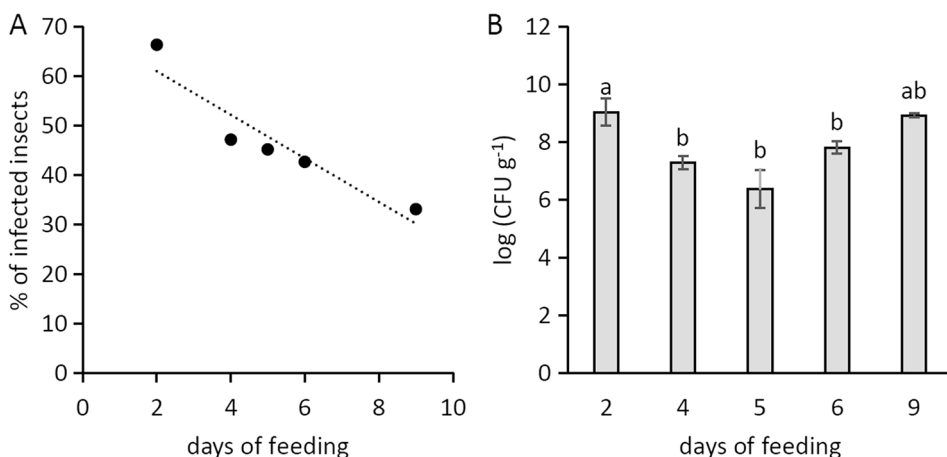
determination of bacterial populations by direct re-isolation plus plate enumeration and by qPCR (from plant tissues) as described above.

In the second step (Fig. 1C), it was tested whether insects feeding on diseased plants can spread the pathogen to healthy ones. Twelve plants were infected by spray inoculation with a *Psa* suspension ( $4.2\times 10^5\text{ cfu ml}^{-1}$ ). Two days after inoculation, 6 adults of *M. pruinosa* were placed on each plant and allowed to feed on it for 7 days. Thereafter, each group of 6 insects was transferred on one of 15 healthy plants and allowed to feed on it for 7 days. On these plants, symptom development was monitored over 30 days. *Psa* population was quantified, as previously described, on experimentally inoculated plants (1 week after inoculation), in the insects (after 14 days of feeding on non-inoculated plants) and in the plants receiving the vector insects (30 days after the transfer of infected insects).

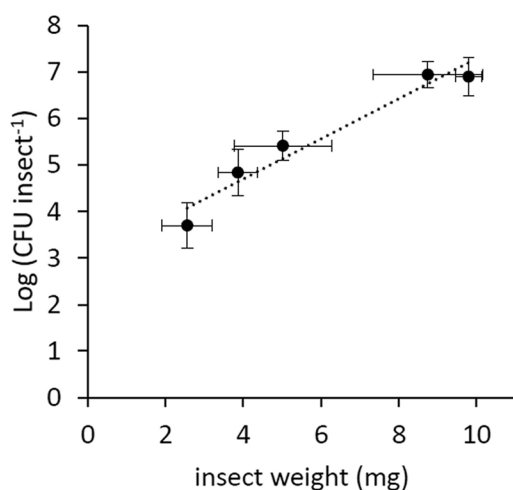
**Statistical analysis.** Significance of correlations was assessed with Fisher's exact test, assuming a confidence level of 0.05. ANOVA and Fisher's LSD test were used to assess significance of differences in bacterial populations in insects according to feeding time ( $P < 0.05$ ). The STATISTICA ver. 5 software (StatSoft Inc, Tulsa, USA) was used for calculation.

## Results

**Contamination of *M. pruinosa* by artificial feeding.** *Psa* showed a limited survival in the artificial feeding solution, as no viable bacteria were found after 24 h from inoculation. In the artificial feeding experiments, the percentage of infected insects reached 67%, but it negatively correlated with the duration of artificial feeding (Fig. 2A). The infected individuals hosted a *Psa* population decreasing



**Fig. 2.** (A) Percentage of infected insects in relation to artificial feeding time. The correlation was significant according to Fisher's exact test. (B) Population of *Pseudomonas syringae* pv. *actinidiae* in the contaminated insects, expressed according to the days of artificial feeding. The data refer to 12-20 individual insects per each sampling point (A) and to those positive for *Psa* among them (B) in the 2013 and 2014 artificial feeding experiments. Bars with different letters are significantly different according to Fisher's LSD test ( $P < 0.05$ ).



**Fig. 3.** Bacterial load in relation to insect weight. Data refer to average values with standard errors of contaminated insects (5-9 per point) taken at the same sampling times in the 2013 and 2014 artificial feeding experiments. The correlation is significant according to Fisher's exact test ( $P < 0.05$ ).

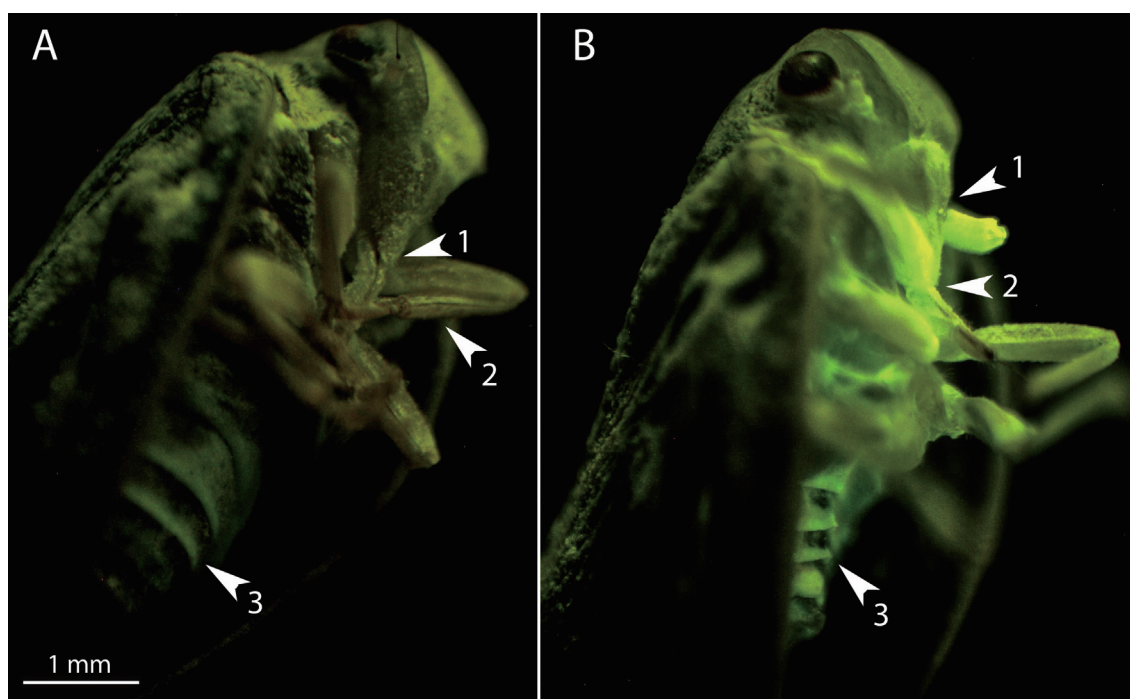
over time (Fig. 2B). However, the bacterial population associated to infected insects positively correlated with their weight (Fig. 3). The percentage of infected neanids (33%) was lower than the one of adults (49%).

**Psa colonization of insect tissues.** The localization of Psa on *M. pruinosa* by microscopical observation showed a bacterial contamination on the mouth parts, legs and the abdominal metameres (Fig. 4). Insects sections showed that the bacteria concentrated also in the inner parts of the mouth and abdomen showing the spread of the pathogen in the digestive apparatus.

#### Field incidence and population of Psa in *M. pruinosa*.

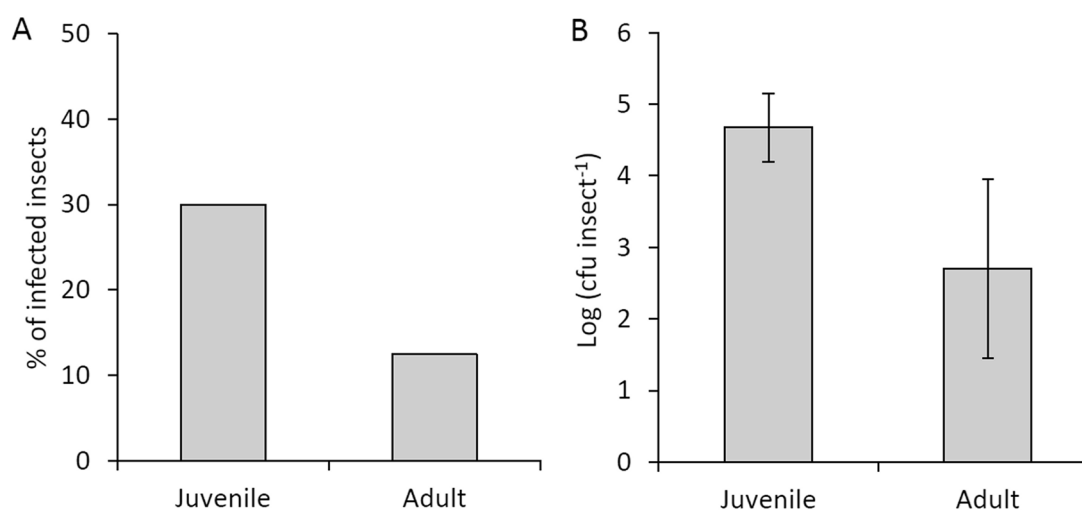
In contrast with *in vitro* experiments, field-collected juvenile insects showed a higher incidence of Psa compared to adults (30% and 13%, respectively; Fig. 5A). The average bacterial population was also higher on neanids ( $1.5 \times 10^5$  cfu/insect) than on adults ( $5.0 \times 10^2$  cfu/insect) (Fig. 5B). Data obtained by qPCR were compatible with plate enumeration of colonies (Supplementary Table 1). About half of the insects feeding on experimentally infected plants resulted contaminated with Psa. The insects harbored a Psa population, which did not correlate with the pathogen population inside the plants where the insect fed (Table 1).

**Psa transmission mediated by *M. pruinosa*.** *M. pruinosa* adults fed on inoculated plant extract were able to transfer the bacterium to 5 out of 15 plants and, one month after the



**Fig. 4.** Fluorescence stereomicroscopy photographs of healthy (A) or contaminated (B) *Metcalfa pruinosa* adult individuals. Bright green fluorescent emission is due to *Pseudomonas syringae* pv. *actinidiae* (CFBP7286-GFPuv) colonization of tissues (1: mouthparts, 2: limbs and 3: urosternites). Insects were contaminated by feeding on artificial medium containing the GFPuv-labelled pathogen. Photographs were taken after 4 days of feeding.





**Fig. 5.** Presence of *Pseudomonas syringae* pv. *actinidiae* in *Metcalfa pruinosa* 2014 field captures. Insects (24 for each class) were captured from a kiwifruit orchard located near Faenza (Italy) in mid-June (juveniles) and at the end of July (adults). (A) percentages of infected insects. (B) *Pseudomonas syringae* pv. *actinidiae* population per insect. Standard error is shown.

**Table 1.** Population of *Pseudomonas syringae* pv. *actinidiae* in the experimentally infected plants, in the vector insects and in the non-inoculated plants after vector insect feeding

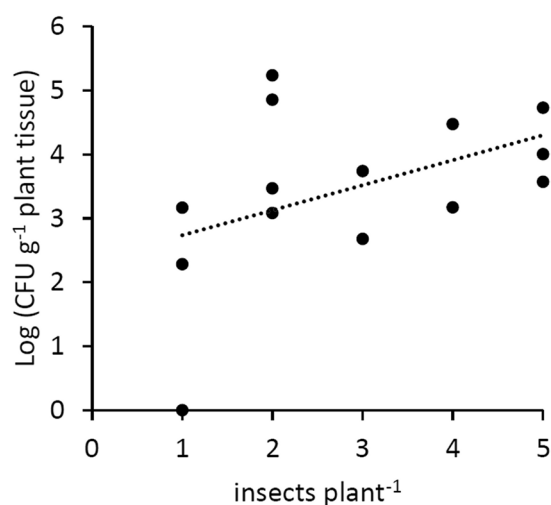
Experimentally infected plants (cfu g <sup>-1</sup> )	Insects (cfu g <sup>-1</sup> )	% of infected insects	Non-inoculated, recipient plants (cfu g <sup>-1</sup> )
$(7.3 \pm 1.3) \times 10^4$	$(7.7 \pm 0.9) \times 10^6$	33	$(1.2 \pm 0.3) \times 10^3$
	$(8.9 \pm 0.0) \times 10^6$	5	$(5.0 \pm 2.9) \times 10^2$
$(1.2 \pm 0.3) \times 10^5$	$(6.7 \pm 2.2) \times 10^6$	17	Not detected
	$(6.9 \pm 2.7) \times 10^6$	5	$(5.5 \pm 0.5) \times 10^3$
$(6.8 \pm 0.9) \times 10^4$	$(7.8 \pm 0.8) \times 10^6$	83	$(5.3 \pm 1.4) \times 10^4$
	$(4.5 \pm 0.0) \times 10^6$	33	$(3.0 \pm 1.5) \times 10^3$
$(6.5 \pm 1.2) \times 10^5$	$(4.8 \pm 4.5) \times 10^6$	17	$(2.0 \pm 2.0) \times 10^2$
$(8.0 \pm 1.5) \times 10^5$	$(9.2 \pm 8.5) \times 10^6$	17	Not detected
$(9.0 \pm 1.0) \times 10^4$	$(7.2 \pm 1.2) \times 10^6$	67	$(1.5 \pm 1.2) \times 10^3$
$(7.3 \pm 0.9) \times 10^4$	$(9.1 \pm 0.1) \times 10^6$	33	$(7.3 \pm 0.5) \times 10^4$
$(5.0 \pm 1.1) \times 10^5$	$(7.3 \pm 0.9) \times 10^6$	83	$(1.0 \pm 0.7) \times 10^4$
$(9.3 \pm 0.5) \times 10^5$	$(8.7 \pm 0.4) \times 10^6$	33	$(1.8 \pm 0.8) \times 10^5$
$(1.2 \pm 0.1) \times 10^6$	$(8.9 \pm 7.2) \times 10^6$	17	$(1.5 \pm 0.9) \times 10^3$
$(3.0 \pm 0.4) \times 10^6$	$(7.5 \pm 1.1) \times 10^6$	83	$(3.7 \pm 2.2) \times 10^3$
$(2.0 \pm 0.4) \times 10^6$	$(6.6 \pm 2.3) \times 10^6$	67	$(3.0 \pm 0.7) \times 10^4$

insect-mediated disease infection, the plants harbored an average of  $2.9 \times 10^2$  cfu g<sup>-1</sup> of plant fresh weight.

The insects feeding on infected plants were able to transmit the disease to 13 healthy plants out of 15 (Table 1, Supplementary Table 2). A positive correlation was also noted between the number of infected vector insects feeding on a single acceptor plant, and the bacterial titre in the same plant (Fig. 6).

## Discussion

**Efficiency of *M. pruinosa*-mediated Psa spread.** Psa was found in nearly half of the insect samples, either feeding on artificial medium or experimentally inoculated plants. The quantification of Psa inside the insect and the microscopical visualization confirmed the bacterium presence in the



**Fig. 6.** Population of *Pseudomonas syringae* pv. *actinidiae* in host plants, in relation to the number of vector insects feeding on them. The correlation is significant according to Fisher's exact test with a confidence level of 0.05.

insect's digestive apparatus. In addition, the pathogen can be transmitted by contaminated insects to healthy plants. All together, these data demonstrate that the insects could vector the bacterium from plant to plant. However, the number of infected insects feeding on a plant, rather than their bacterial load, is determinant for the disease transmission. Therefore, low transmission efficiency may be hypothesized from *M. pruinosa*, while a high number of feeding events would increase the chance of infection. This is particularly important in the light of *M. pruinosa*'s gregarious behavior.

The negative correlation between infected insect percentage and days of feedings (Fig. 2B) may be due to the low viability of the bacteria in artificial solution or to the activity of insect immune system (Vilmos and Kuruoz, 1998), which may produce several antimicrobial compounds, as shown for bees (Gätschenberger et al., 2013). On the other hand, the apparent increase observed after 9 days of feeding is possibly linked to the insect's growth in weight, which positively correlates with the bacterial population hosted by the vector (Fig. 3).

**Ecological factors related to Psa spread.** Specific features of bacterial strains and environmental conditions may influence several aspects of the vector-pathogen-host interaction, by affecting pathogen multiplication in source hosts, pathogen multiplication within vectors (Feil and Purcell 2001), vector behaviour (Su and Mulla, 2001), or movement (Vail and Smith, 2002). Notably, the transmission of Psa via puncturing insects is not influenced by the number

and status of generally acknowledged infection routes, such as stomata, flowers and wounds, and may be overlooked by common orchard protection measures. One of the symptoms of the bacterial canker of kiwifruit consists in droplets or masses of sticky exudate (ooze) on the surface of host tissues (Donati et al., 2014) which could stick on the limbs and bodies of visiting insects. In natural conditions, the sugars in the bacterial exudate may attract *M. pruinosa* and other insects as a food source, making them possible vectors of the bacteria contained in the same exudates (Agrios, 2008). In addition, *M. pruinosa* itself produces a sugary honeydew that may smear the plant surface and attract other insects. If Psa could be detected in this secretion, it may contribute further to Psa dispersion. Besides its feeding behavior, *M. pruinosa* could carry pathogens externally on their bodies after the contact with infected plant tissue or bacterial ooze (Fig. 5B). Oviposition is another crucial stage in the biological cycle of *M. pruinosa*, consisting in the mechanical injection of the eggs in host tissues. Since oviposition takes place from September to October, when the weather conditions are still favorable for the development of the bacterial canker, it may significantly contribute to the spread of Psa.

**Insect developmental stage and vectoring ability.** The insects' developmental phase may affect their immune system efficiency, with juvenile stages more exposed to bacterial contamination (Gätschenberger et al., 2013). In contrast, previous studies on several leafhopper species suggested that vector age did not influence their vectoring capacity (Chiykowski and Sinha 1988; Murrall et al., 1996), or that slight differences were due to the amount of sap ingested (Palermo et al., 2001). In this work, field and laboratory observations yielded contrasting evidence on Psa incidence in relation to developmental stage. Thus, environmental conditions, such as temperature (Murrall et al., 1996), water availability, and their effects on Psa and host plants, rather than insect physiology, may be responsible for the observed differences.

**Applicative remark.** The ecological importance of *M. pruinosa* as a vector of Psa in field conditions has not yet been evaluated. In particular, the production of infected honeydew, the attraction of *M. pruinosa* by bacterial exudates and the survival of the pathogen inside and outside *M. pruinosa* in different climatic conditions require further research. However, our results demonstrated the capacity of *M. pruinosa* to vector the disease in controlled conditions. Thus, the control of *M. pruinosa* and, possibly, other pests is suggested to minimize the risk of Psa diffusion.

## Acknowledgments

The work was funded by the European Union's Seventh Framework Programme for research, technological development and demonstration under grant agreement no 613678 (DroPSA - Strategies to develop effective, innovative and practical approaches to protect major European fruit crops from pests and pathogens). This research is a part of dr. Sofia Mauri's PhD thesis.

## References

- Agrios, G. N. 2008. Transmission of plant disease by insects. In: *Encyclopedia of entomology*, ed. by J. L. Capinera, pp. 2290-2317. Springer, Berlin, Germany.
- Brown, C., Lynch, L. and Zilberman, D. 2002. The economics of controlling insect-transmitted plant diseases. *Am. J. Agric. Econ.* 84:279-291.
- Chiykowski, L. N. and Sinha, R. C. 1988. Some factors affecting the transmission of eastern peach X-mycoplasmalike organism by the leafhopper *Paraphlepsius irroratus*. *Can. J. Plant Pathol.* 10:85-92.
- Donati, I., Burianni, G., Cellini, A., Mauri, S., Costa, G. and Spinelli, F. 2014. New insights on the bacterial canker of kiwifruit (*Pseudomonas syringae* pv. *actinidiae*). *J. Berry Res.* 4:53-67.
- FAO. FAOStat data on world kiwifruit production. URL <http://www.fao.org/faostat/en/#data/QC/> [30 March 2017].
- Feil, H. and Purcell, A. H. 2001. Temperature-dependent growth and survival of *Xylella fastidiosa* *in vitro* and in potted grapevines. *Plant Dis.* 85:1230-1234.
- Gätschenberger, H., Azzami, K., Tautz, J. and Beier, H. 2013. Antibacterial immune competence of honey bees (*Apis mellifera*) is adapted to different life stages and environmental risks. *PLoS One* 8:e66415.
- Grozea, I., Gogan, A., Virteiu, A. M., Grozea, A., Stef, R., Molnar, L., Carabet, A. and Dinnesen, S. 2011. *Metcalfa pruinosa* Say (Insecta: Homoptera: Flatidae): a new pest in Romania. *Afr. J. Agric. Res.* 6:5870-5877.
- Grozea, I., Vlad, M., Virteiu, A. M., Stef, R., Carabet, A., Molnar, L. and Mazare, V. 2015. Biological control of invasive species *Metcalfa pruinosa* Say (Insecta: Hemiptera: Flatidae) in ornamentals plants by using Coccinellids. *J. Biotechnol.* 208:S5-S120.
- Murrall, D. J., Nault, L. R., Hoy, C. W., Madden, L. V. and Miller, S. A. 1996. Effects of temperature and vector age on transmission of two Ohio strains of aster yellows phytoplasma by the aster leafhopper (Homoptera: Cicadellidae). *J. Econ. Entomol.* 89:1223-1232.
- Palermo, S., Arzone, A. and Bosco, D. 2001. Vector-pathogen-host plant relationships of chrysanthemum yellows (CY) phytoplasma and the vector leafhoppers *Macrostelus quadri-punctulatus* and *Euscelidius variegatus*. *Entomol. Exp. Appl.* 99:347-354.
- Pushparajah, I. P. S., Ryan, T. R., Hawes, L. G., Smith, B. N., Follas, G. B., Rees-George, J. and Everett, K. R. 2014. Using qPCR to monitor populations of *Pseudomonas syringae* pv. *actinidiae* on kiwifruit vines after spray application of Bacstar™. *N. Z. Plant Prot.* 67:220-225.
- Rees-George, J., Vanneste, J. L., Cornish, D. A., Pushparajah, I. P. S., Yu, J., Templeton, M. D. and Everett, K. R. 2010. Detection of *Pseudomonas syringae* pv. *actinidiae* using polymerase chain reaction (PCR) primers based on the 16S-23S rDNA intertranscribed spacer region and comparison with PCR primers based on other gene regions. *Plant Pathol.* 59:453-464.
- Spinelli, F., Donati, I., Vanneste, J. L., Costa, M. and Costa, G. 2011. Real time monitoring of the interactions between *Pseudomonas syringae* pv. *actinidiae* and *Actinidia* species. *Acta Hort.* 913:461-465.
- Strauss, G. 2010. Pest risk analysis of *Metcalfa pruinosa* in Austria. *J. Pest Sci.* 83:381-390.
- Su, T. and Mulla, M. S. 2001. Effects of temperature on development, mortality, mating and blood feeding behavior of *Culiseta incidens* (Diptera: Culicidae). *J. Vector Ecol.* 26:83-92.
- Takikawa, Y., Serizawa, S., Ichikawa, T., Tsuyumu, S. and Goto, M. 1989. *Pseudomonas syringae* pv. *actinidiae* pv. nov.: the causal bacterium of canker of kiwifruit in Japan. *Ann. Phytopath. Soc. Japan* 55:437-444.
- Tanne, E., Boudon-Padieu, E., Clair, D., Davidovich, M., Melamed, S. and Klein, M. 2001. Detection of phytoplasma by polymerase chain reaction of insect feeding medium and its use in determining vectoring ability. *Phytopathology* 91:741-746.
- Tremblay, E. and Priore, R. 1994. *Metcalfa pruinosa* arrived to Campania. *L'Informatore Agrario* 50:69-71 (in Italian).
- Vail, S. G. and Smith, G. 2002. Vertical movement and posture of blacklegged *Metcalfa pruinosa* arrived to Campania *Metcalfa pruinosa* arrived to Campania *Metcalfa pruinosa* arrived to Campania *Metcalfa pruinosa* arrived to Campania tick (Acari: Ixodidae) nymphs as a function of temperature and relative humidity in laboratory experiments. *J. Med. Entomol.* 39:842-846.
- Vanneste, J. L., Kay, C., Onorato, R., Yu, J., Cornish, D. A., Spinelli, F. and Max, S. 2011. Recent advances in the characterisation and control of *Pseudomonas syringae* pv. *actinidiae*, the causal agent of bacterial canker on kiwifruit. *Acta Hort.* 913:443-455.
- Vilmos, P. and Kuruoz, E. 1998. Insect immunity: evolutionary roots of the mammalian innate immune system. *Immunol. Lett.* 62:59-66.
- Wilson, S. W. and McPherson, J. E. 1981. Life histories of *Anor-menis septentrionalis*, *Metcalfa pruinosa*, and *Ormenoides venusta* with descriptions of immature stages. *Ann. Entomol. Soc. Am.* 74:299-311.
- Zangheri, S. and Donadini, P. 1980. Appearance in Veneto of a nearctic homopteran: *Metcalfa pruinosa* Say (Homoptera, Flatidae). *Redia* 63:301-305 (in Italian).