

RESEARCH ARTICLE

Open Access



Adding Chinese herbal medicine to conventional therapy brings cognitive benefits to patients with Alzheimer's disease: a retrospective analysis

Jing Shi^{1†}, Jingnian Ni^{1†}, Tao Lu^{2†}, Xuekai Zhang¹, Mingqing Wei¹, Ting Li¹, Weiwei Liu³, Yongyan Wang⁴, Yuanyuan Shi^{2*} and Jinzhou Tian^{1*}

Abstract

Background: Conventional therapy (CT) such as donepezil and memantine are well-known short-term treatments for the symptoms of Alzheimer's disease (AD). The efficacy of them, however, drops below baseline level after 9 months. In China, herbal therapy as a complementary therapy is very popular. Should conventional therapy combined with herbal therapy (CT + H) make add-on benefit?

Methods: In this retrospective cohort study, 344 outpatients diagnosed as probable dementia due to AD were collected, with the treatment of either CT + H or CT alone in clinical settings. All the patients were examined with coronary MRI scan. Cognitive functions were obtained by mini-mental state examination (MMSE) every 3 months with the longest follow-up of 24 months.

Results: Most of the patients were initially diagnosed with mild (MMSE = 21–26, $n = 177$) and moderate (MMSE = 10–20, $n = 137$) dementia. At 18 months, CT+ H patients scored on average 1.76 ($P = 0.002$) better than CT patients, and at 24 months, patients scored on average 2.52 ($P < 0.001$) better. At 24 months, the patients with improved cognitive function ($\Delta\text{MMSE} \geq 0$) in CT + H was more than CT alone (33.33% vs 7.69%, $P = 0.020$). Interestingly, patients with mild AD received the most robust benefit from CT + H therapy. The deterioration of the cognitive function was largely prevented at 24 months ($\Delta\text{MMSE} = -0.06$), a significant improvement from CT alone ($\Delta\text{MMSE} = -2.66$, $P = 0.005$).

Conclusions: Compared to CT alone, CT + H significantly benefited AD patients. A symptomatic effect of CT + H was more pronounced with time. Cognitive decline was substantially decelerated in patients with moderate severity, while the cognitive function was largely stabilized in patients with mild severity over two years. These results imply that Chinese herbal medicines may provide an alternative and additive treatment for AD.

Keywords: Alzheimer's disease, Complementary and alternative medicine, Traditional Chinese medicine

* Correspondence: yshi@bucm.edu.cn; jztian@hotmail.com

†Equal contributors

²School of Life Sciences, Beijing University of Chinese Medicine, No. 11 East road, North 3rd Ring Road, Beijing 100029, China

¹BUCM Neurology Centre at Dongzhimen Hospital, Beijing University of Chinese Medicine, No. 5 Haiyuncang Street, Dongcheng, Beijing 100700, China

Full list of author information is available at the end of the article



Background

Alzheimer's disease (AD) is a growing challenge for global health and economy. AD now affects about 6.25/1000 people per year in China [1]. Approved pharmacotherapies for AD include three cholinesterase inhibitors (ChEIs, such as donepezil, rivastigmine and galantamine) and a N-methyl D-aspartate (NMDA) receptor antagonist (memantine). These well-studied conventional treatments for AD are generally considered to be symptom-relieving rather than disease-modifying. Studies have shown that ChEI treatment for mild to moderate AD may reach peak benefit for cognitive improvement within 3 months, but drop below baseline level after 9 months [2, 3]. Patients with moderate to severe AD receiving stable doses of both donepezil and memantine experienced limited cognitive improvement [4]. In another study, no significant benefit was found by combining donepezil and memantine treatment [5].

On the other hand, herbal medicine has long been used for the treatment of dementia in China [6]. Its effectiveness has not yet been well documented. Previous results from a small short-term clinical trial demonstrated that Chinese herbal medicine has potent cognitive enhancing effects [7]. In our study, over the span of two years, we investigated the effectiveness of combining conventional therapy of ChEI or NMDA antagonist with Chinese herbal medicine on ameliorating cognitive functions in AD patients.

Methods

Study design and data collection

It's a retrospective cohort study and patients diagnosed as Alzheimer's dementia were collected [8, 9]. Medical records between May 2011 to August 2016 were accessed by using administrative datasets of memory clinic. Clinical records covered detailed medical history, cognitive and neuropsychological tests, neurological examinations, results of laboratory tests (i.e. thyroid function, folic acid levels, vitamin B12 levels, and routine blood tests), and neuroimaging. Hippocampus atrophy was accessed by neuroimaging specialist according to age-adjusted medial temporal lobe atrophy scale (MTA-scale) based on coronary MRI scan of the brain.

The operational definition of Alzheimer's dementia was as follows: (1) gradual and progressive change in cognitive functions over more than 6 months; (2) objective evidence of significant impairment in episodic memory together with at least one of other cognitive domains; [10] (3) global cognitive decline measured by mini-mental state examination (MMSE) adjusted for education: ≤ 22 for illiteracy, ≤ 23 for primary school, ≤ 24 for middle school, ≤ 26 for high education; [11] (4) impaired abilities of daily living, ADL scale score ≥ 16 ; [12] (5) ≤ 4 point on Hachinski Ischaemic Score (HIS); (6) age-adjusted MTA-

scale based on coronary magnetic resonance imaging (MRI) scan of the brain (1.0 or more for ≤ 65 years; 1.5 or more for ≤ 75 years and 2.0 or more for ≥ 75 years); [9, 13] (7) other causes of dementia excluded.

Patients with the following characteristics were excluded: (1) sudden onset of cognitive disorder with focal nervous system signs in the early stages of disease, (e.g., incomplete paralysis, anesthesia, dysfunctional visual field, and dystaxia); (2) early occurrence of the following symptoms: gait disturbances, seizures, extrapyramidal signs, hallucinations and cognitive fluctuations; (3) any major psychiatric disorders (e.g., DSM-IV-defined psychosis, major depression, bipolar disorder, or alcohol or substance abuse); (4) other conditions that may explain cognitive impairment (e.g., hypothyroidism, electrolyte imbalance, toxic, inflammatory, and metabolic disorders).

Interventions and outcome measurements

According to the received treatments, patients were grouped into conventional therapy with herbal medicine (CT + H) or conventional therapy without herbal medicine (CT). Conventional therapy included treatment with Donepezil and/or memantine. Donepezil was used to treat mild to severe AD patients and memantine was given to moderate and severe AD patients. The dose of donepezil ranged from 5 to 10 mg once a day according to patients' tolerance. Most patients received 10 mg memantine once a day, those with apparent mental and behavior symptoms received up to 20 mg of memantine once a day.

Herbal medicine as a traditional therapy is believed to be helpful for dementia in China. The herbal granule was approved by CFDA for clinical use. The GRAPE formula was prescribed for AD patients after every visit according to TCM theory. It consisted mainly of Ren shen (*Panax ginseng*, 10 g/d), Di huang (*Rehmannia glutinosa*, 30 g/d), Cang pu (*Acorus tatarinowii*, 10 g/d), Yuan zhi (*Polygala tenuifolia*, 10 g/d), Yin yanghuo (*Epimedium brevicornu*, 10 g/d), Shan zhuyu (*Cornus officinalis*, 10 g/d), Rou congrou (*Cistanche deserticola*, 10 g/d), Yu jin (*Curcuma aromatica*, 10 g/d), Dan shen (*Salvia miltiorrhiza*, 10 g/d), Dang gui (*Angelica sinensis*, 10 g/d), Tian ma (*Gastrodia elata*, 10 g/d), and Huang lian (*Coptis chinensis*, 10 g/d), supplied by Beijing Tcmages Pharmaceutical Co., LTD. Daily dose was taken twice and dissolved in 150 ml hot water each time.

Global cognitive function was evaluated mainly with MMSE at 3 (± 1.5) month interval, conducted by physicians special in psychological assessment. The data followed-up 24 months was involved in this study. In the mini-mental state examination, the range of scores was 0 to 30, and higher scores indicated better cognitive function.

Statistical analysis

The statistical analyses were conducted using SAS 9.2. Average continuous variables with standard deviation were calculated when data are normally distributed, and the counting categorical variables were shown in percentage. The demographics between two groups were compared. ANOVA was used for testing the differences of continuous variables when data are normally distributed and equal variances assumed, and nonparametric test was used if not. The chi-squared test or Fisher exact test was used for categorical variables. Real decline in MMSE score was calculated by measuring MMSE score minus baseline MMSE score. Expected decline of MMSE were calculated by a formula produced by previous data [14]. The analyses of the efficacy measures were based on the observed case population. For all outcomes, we used linear mixed-effects models using restricted maximum likelihood with random intercepts to estimate between-group differences, adjusted for baseline MMSE, education, donepezil and memantine use, for each measurement time point. Estimated group differences are reported with 95% CIs and *P* values. All statistical tests were two-sided, and a *P* < 0.05 was considered statistically significant.

Results

Table 1 shows the detailed baseline characteristics of the two groups. A total of 344 AD patients were recruited, 243 cases were assigned to CT + H, and 101 cases to CT. No differences were found between the two groups in gender, age, but small differences in education (1.45 years, *P* = 0.03) and MMSE (1.48 points, *P* = 0.04). Most of the patients were initially diagnosed with mild to moderate cognitive impairment (MMSE 10–26, *N* = 314). Diabetes and hypertension were more prevalent in the group treated with CT + H.

The changes of mean MMSE scores after treatment at different visiting points were listed in Table 2. Patients treated with CT + H performed better in cognition than CT alone at different visiting points except at 9 months. Clinical improvement defined by a change of >0.0 score in MMSE lasted about 12 months by the treatment of CT + H. Moreover, the combined CT + H therapy showed a tendency of slowing the decline in cognitive function (Fig. 1a). With the treatment course prolonged, increased differences between two groups (difference in MMSE was 1.08 at 12 months, *P* = 0.009; 1.76 at 18 months, *P* = 0.010 and 2.52 at 24 months, *P* < 0.001) showed a long-term effectiveness of herbal medicine combined with conventional therapy.

The differences in effectiveness of AD patients with different severities were analyzed (Table 3 and Fig. 1b). Consistent with other published results, conventional therapy (CT) has a transient improvement in cognition

Table 1 Demographic characteristics of AD patients at baseline visit

| | CT + H (<i>N</i> = 243) | CT (<i>N</i> = 101) | Total (<i>N</i> = 344) |
|-----------------------------------|-----------------------------|-------------------------|----------------------------|
| Male sex — <i>n</i> (%) | 135 (55.55) | 57 (56.43) | 192 (55.81) |
| Age—yr., mean ± SD | 69.61 ± 8.92 | 67.50 ± 10.65 | 68.99 ± 9.49 |
| Education—yr., mean ± SD | 11.05 ± 5.63* | 9.60 ± 5.65 | 10.62 ± 5.66 |
| MMSE score— mean ± SD | 19.01 ± 6.37* | 20.47 ± 5.07 | 19.44 ± 6.05 |
| Mild — <i>n</i> | 121 | 56 | 177 |
| moderate — <i>n</i> | 93 | 44 | 137 |
| severe — <i>n</i> | 29 | 1 | 30 |
| ADL score—mean ± SD | 22.98 ± 9.13 | 21.28 ± 6.56 | 22.54 ± 8.56 |
| BMI—kg/m ² , mean ± SD | 22.36 ± 3.79 | 22.73 ± 3.04 | 22.48 ± 3.57 |
| Smoke — <i>n</i> (%) | 37 (15.22) | 10 (9.90) | 47 (13.66) |
| Diabetes — <i>n</i> (%) | 19 (7.81)** | 0 (0) | 19 (5.52) |
| Hypertension — <i>n</i> (%) | 62 (25.51)*** | 6 (5.94) | 68 (19.76) |
| Donepezil — <i>n</i> (%) | 202 (82.13)*** | 98 (97.02) | 300 (87.21) |
| Memantine — <i>n</i> (%) | 64 (26.33)* | 14 (13.86) | 78 (22.67) |
| Both Donepezil and Memantine | 58 (23.86)* | 12 (11.88) | 70 (20.34) |

CT + H, conventional therapy with herbal granule; CT, conventional therapy alone; MMSE, mini-mental state examination; ADL, activities of daily living; BMI, body mass index. The activities of daily living (ADL) contain 14 items, which cover 8 items of Lawton instrumental ADL scale and 6 items of Katz ADL scale (score 1–4), the range is 14 to 56, and higher scores indicate worse function. Some differences were observed in education, MMSE, diabetes history, hypertension history, donepezil use, memantine use and both donepezil and memantine

* *P* < 0.05, ** < 0.01, *** < 0.001

with a peak response at 3–6 months [2, 3]. Patients with moderate AD were more responsive to CT treatment than patients with mild AD. After 6 months, however, the MMSE score of patients with moderate AD deteriorated sharply, approaching the projected trend for no treatment at 12 months (expected decline of MMSE was 3.38) [14]. Cognitive deterioration of patients with moderate AD was largely ameliorated over time when given combined CT and herbal medicine. The cognitive improvement (Δ MMSE > 0) in moderate AD with herbal medicine lasted nearly 12 months longer than CT therapy alone. In mild patients, combined therapy outperformed CT alone at almost every time point. These results indicate that the effect of herbal medicine is long-lasting. Interestingly, patients with mild AD were not initially responsive to both therapies (CT + H and CT) (<12 months). However, patients treated with CT + H exhibited a stabilization of cognitive function at 24 months (Δ MMSE = -0.06), which is a significant improvement compared to CT alone (2.60 point higher in

Table 2 MMSE change between groups with or without herbal medicine

| Follow-up | MMSE change | | | | | | Expected | |
|-----------|-------------|--------------|----------------|-----------|--------------|----------------|----------|-------|
| | CT+H | | | CT | | | | |
| N | mean ± SD | 95% CI | N | mean ± SD | 95% CI | P value | | |
| 3 m | 121 | 0.93 ± 2.80 | 0.43 to 1.43 | 70 | -0.05 ± 3.60 | -0.91 to 0.8 | 0.009 | -0.57 |
| 6 m | 71 | 0.75 ± 2.90 | 0.06 to 1.43 | 33 | 0.27 ± 3.01 | -0.79 to 1.34 | 0.034 | -1.12 |
| 9 m | 49 | 0.59 ± 3.01 | -0.27 to 1.45 | 12 | -0.41 ± 3.92 | -2.9 to 2.07 | 0.077 | -1.64 |
| 12 m | 52 | -0.05 ± 2.85 | -0.85 to 0.73 | 28 | -1.03 ± 3.12 | -2.24 to 0.17 | 0.009 | -2.17 |
| 15 m | 53 | -0.32 ± 2.41 | -0.98 to 0.34 | 21 | -1.95 ± 2.65 | -3.16 to -0.74 | 0.008 | -2.89 |
| 18 m | 26 | -1.42 ± 1.79 | -2.14 to -0.69 | 27 | -3.18 ± 2.21 | -4.04 to -2.32 | 0.010 | -3.43 |
| 21 m | 23 | -1.08 ± 2.36 | -1.83 to -0.33 | 11 | -3.36 ± 2.54 | -5.07 to -1.65 | 0.014 | -3.65 |
| 24 m | 30 | -1.40 ± 2.37 | -2.28 to -0.51 | 26 | -3.92 ± 2.26 | -4.83 to -3.01 | 0.000 | -4.52 |

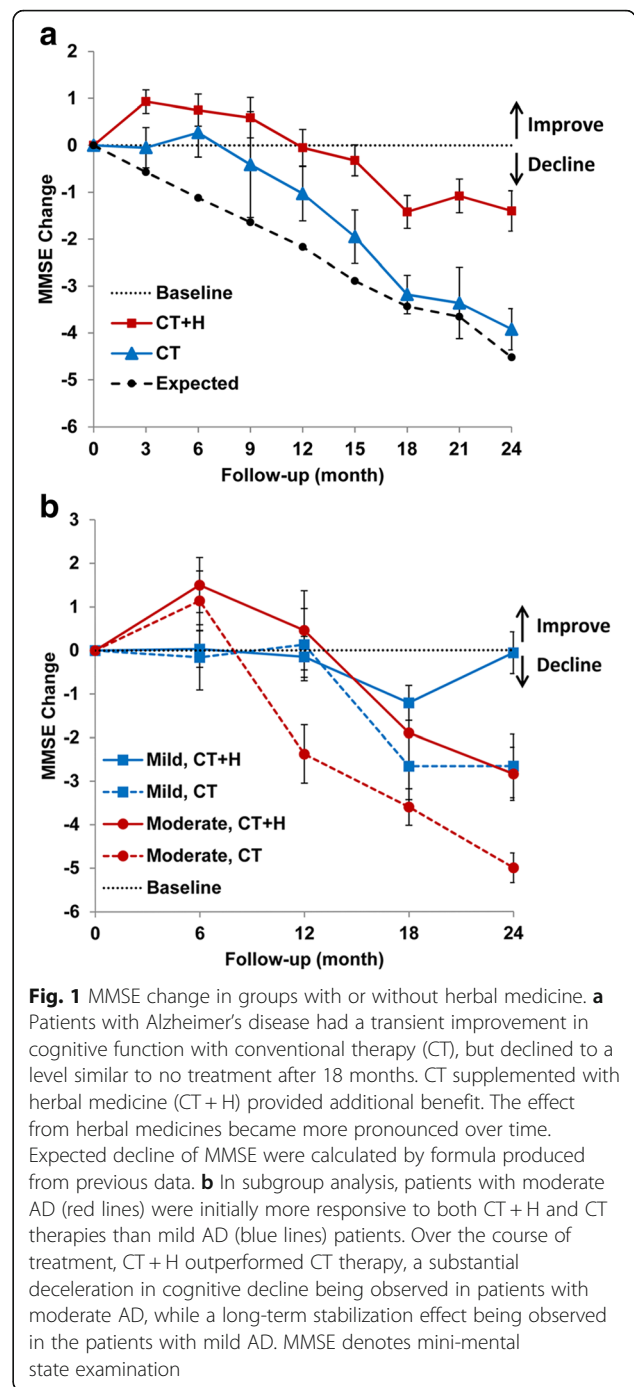
CT + H, conventional therapy with herbal granule; CT, conventional therapy alone; MMSE, mini-mental state examination. We used linear mixed-effects models for outcome assessment, the differences were adjusted for medical history, baseline MMSE, education and use of donepezil or memantine. Follow-up was not strictly performed at all-time points; the real intervals of monitoring were different

MMSE score, $p = 0.012$). MMSE change in severe patients treated with CT + H were 1.42 ± 2.30 , -1.00 ± 1.41 , -0.50 ± 0.70 and -2.0 ± 0.00 at 6, 12, 18 and 24 months, respectively.

Overall number of patients with improved ($\Delta\text{MMSE} \geq 0$) or deteriorated ($\Delta\text{MMSE} \geq -4$) MMSE scores were also analyzed (Table 4). At 24 m, 33.33% of patients in the CT + H group had improved MMSE versus 7.69% in the CT group ($P = 0.02$). On the other hand, only 16.67% of patients in the CT + H group had significant deterioration (≥ 4 points) in their MMSE score compared to the 65.38% of patients in the CT group ($P < 0.001$). No other adverse events were reported except for mild abdominal distension in the first few weeks in some people.

Discussion

Over the past two decades, AD has been studied extensively. The causal mechanisms, however, still remain unclear. Single-target therapeutic approaches for new drug development have been challenged recently for their effectiveness and side-effects. ChEIs (such as donepezil) and NMDA antagonist i.e. memantine, the most commonly used single-target medicines, have limited long-term effectiveness for AD [2–5]. GRAPE granule as herbal mixtures with multiple targets resourced from Qifuyin in *Jing Yue Quan Shu* (First published in A.D. 1624) [15] may have a potential improvement over single-target medicines in the treatment of multifactorial, multiple cascade neurodegenerative process like AD.



So far, many complementary and alternative medicines have been assessed with promising results [7]. GAPT, a mixed Chinese herbal extracts, has shown effectively decrease the level of GSK-3 β expression and A β accumulation via the inhibition of γ -secretase (presenilin-1) and promoting insulin degrading enzyme (IDE) and neprilysin (NEP) in APPV717I transgenic mice [16, 17]. Other possible mechanisms also have been explored [18, 19]. Based on these previous studies, GRAPE granule with

Table 3 MMSE change among AD patients with different severities

| | | MMSE change | | | |
|-----------------------|-----------|---------------|----------------|----------------|----------------|
| | | 6 m | 12 m | 18 m | 24 m |
| Mild (MMSE 21–26) | | | | | |
| CT + H | mean ± SE | 0.03 ± 0.42 | -0.15 ± 0.47 | -1.21 ± 0.40 | -0.06 ± 0.48 |
| | 95% CI | -0.83 to 0.88 | -1.12 to 0.81 | -2.09 to -0.33 | -1.1 to 0.97 |
| | N | 36 | 32 | 14 | 15 |
| CT | mean ± SE | -0.16 ± 0.75 | 0.13 ± 0.83 | -2.66 ± 0.77 | -2.66 ± 0.73 |
| | 95% CI | -1.75 to 1.41 | -1.66 to 1.93 | -4.36 to -0.96 | -4.27 to -1.05 |
| | N | 18 | 15 | 11 | 12 |
| | P value | 0.043 | 0.660 | 0.030 | 0.012 |
| Moderate (MMSE 10–20) | | | | | |
| CT + H | mean ± SE | 1.5 ± 0.63 | 0.46 ± 0.91 | -1.9 ± 0.7 | -2.84 ± 0.61 |
| | 95% CI | 0.21 to 2.78 | -1.49 to 2.42 | -3.49 to -0.3 | -4.19 to -1.49 |
| | N | 28 | 15 | 10 | 13 |
| CT | mean ± SE | 1.14 ± 0.68 | -2.38 ± 0.67 | -3.6 ± 0.42 | -5 ± 0.34 |
| | 95% CI | -0.34 to 2.62 | -3.85 to -0.91 | -4.5 to -2.69 | -5.75 to -4.24 |
| | N | 14 | 13 | 15 | 14 |
| | P value | 0.196 | 0.001 | 0.253 | 0.025 |

As severe cases were few, the analysis were done only in mild and moderate AD patients. Differences between CT + H and CT were observed at 12 to 24 months in moderate group, but later at 24 months in mild group. MMSE denotes mini-mental state examination; CT + H denotes conventional therapy with herbal medicine; CT denotes conventional therapy alone

analogous activity and active components to GAPT may make additional benefits to AD patients with the treatment of donepezil or memantine. Single herbal granule used in clinical settings is standardized by licensed pharmaceutical company in China (In this study, Beijing Tcmages Pharmaceutical Co. LTD., www.tcmages.com), although the composition of herbal prescription is based on doctors' experiences [20]. The active components of the GRAPE formula fall into three correlated categories: bushen(补肾) herbs (energy-boosting with *Panax ginseng*, *Rehmannia glutinosa* and *Epimedium brevicornu*), huatan(化痰) herbs (anti-inflammation with *Acorus tatarinowii* and *Polygala tenuifolia*) and huoxue(活血) herbs (circulation-promoting with *Curcuma aromatica*, *Salvia miltiorrhiza* and *Angelica sinensis*). Those herbs above have been given to humans for thousands of years in China, and no apparent side effects have been reported.

The result of our conventional therapy without herbal medicine is consistent with other controlled trials. As shown in a study, donepezil treated patients got a short-term symptomatic improvement, but patients' scores deteriorated significantly from baseline (-1.58 ± 0.42 , $p < 0.001$ vs baseline) at 52 weeks [21]. A similar MMSE change was observed in this study, while P value didn't reach a statistical significance (-1.03 ± 3.12 , $P = 0.09$ vs baseline). In this study, the benefits made by conventional therapy combined with herbal granule in the first 12 months were significant

albeit mild demonstrated using a mixed line model adjusted the baseline variables.

However, the addition of herbal granule made more significant long-term benefits for AD patients. During the period of prolonged treatment, differences in MMSE between CT + H and CT became larger (1.08 at 12 months, $P = 0.009$; 1.76 at 18 months, $P = 0.01$ and 2.52 at 24 months, $P < 0.001$). A possible explanation for this phenomenon is that donepezil targets at the neurotransmitter level, a downstream rather than upstream effector of pathophysiological processes of AD. Herbal medicine, on the other hand, targets broadly, including A β accumulation, neuroinflammation, tau hyperphosphorylation, glucose metabolism dysregulation, harmful gut microbiota, oxidative stress, and other factors that play important roles in the onset and progression of AD [16–19, 22, 23].

Except for cholinesterase inhibitors, blockers of the NMDA receptor, antioxidants or blockers of oxidative deamination (including *Gingko biloba*), anti-inflammatory agents etc. can be a choose for treating Alzheimer's disease [24]. Combination therapy with cholinesterase inhibitors and memantine was demonstrated beneficial for cognition of moderate-to-severe Alzheimer's disease, but not in mild-to-moderate AD subgroup [25]. Data from the ICTUS study accessed the effects of *Gingko biloba* supplementation in mild-to-moderate Alzheimer's disease patients receiving cholinesterase inhibitors, some added cognitive benefits measured by MMSE rather than ADAS-cog was observed at

Table 4 Comparison of % of patients with improved or deteriorated MMSE scores

| | | MMSE change | | | |
|--------------------------|-------------|-------------|-------|-------|-------|
| | | 6 m | 12 m | 18 m | 24 m |
| Improved(≥ 0) | CT + H no. | 51/71 | 29/52 | 8/26 | 10/30 |
| | % | 71.83 | 55.76 | 30.76 | 33.33 |
| | CT, no. | 23/33 | 10/28 | 2/27 | 2/26 |
| | % | 69.69 | 35.71 | 7.40 | 7.69 |
| | P value | 0.823 | 0.087 | 0.030 | 0.020 |
| Deteriorated(≥ 4) | CT + H, no. | 5/71 | 5/52 | 3/26 | 5/30 |
| | % | 7.04 | 9.61 | 11.53 | 16.67 |
| | CT, no. | 3/33 | 7/28 | 12/27 | 17/26 |
| | % | 9.09 | 25.00 | 44.44 | 65.38 |
| | P value | 0.715 | 0.066 | 0.008 | 0.000 |

CH + H denotes conventional therapy with herbal medicines; CT denotes conventional therapy alone; MMSE denotes mini-mental state examination

12 months but not at 6 months [26]. Like our findings, added benefits by botanical medicine are time dependent. This retrospective analysis implies that a prospective study for accessing additive effects of herbal medicine in patients with mild-to-moderate AD may have a reasonable follow-up of at least 12 months.

The analysis was done by the observed case population, selection bias is the main concern of this retrospective analysis. A prospective randomized controlled trial is needed to confirm the findings in this retrospective analysis of real world data. Another limitation of this study was set by use of MMSE as the effect indicator. Some items are judged to be easy and the ceiling effects lead to a relatively low sensitivity for detecting the cognitive change in mild AD [27]. Therefore, MMSE may be a bias factor for the result of relatively stable cognitive in mild group. The subsetting approach of analyzing ADAS-cog data suggested by other study may be an alternative in future for gaining information about treatment effects on cognitive performance in mild AD patients [28].

Conclusions

Conventional therapy such as donepezil and memantine got a short-term symptomatic improvement, but patients' global cognition deteriorated significantly after about 9 months of treatment compared with baseline. Combined conventional therapy with Chinese herbal medicine may bring additional longer symptomatic benefit for patients with mild-to-moderate AD.

Abbreviations

AD: Alzheimer's disease; ADAS-cog: Alzheimer's disease assessment scale cognitive subscale; ADL: Abilities of daily living; BMI: Body mass index; ChEi: Cholinesterase inhibitors; CT + H: Conventional therapy combined with herbal therapy; CT: Conventional therapy; DSM-IV: Statistical manual of mental disorders; HIS: Hachinski ischaemic score; MMSE: Mini-mental state examination; MRI: Magnetic resonance imaging; NMDA: N-methyl D-aspartate

Acknowledgements

We would like to thank the people not listed as authors in this work: Zhang LP, Wang PW for imaging assessment, Kang SH, Li YM, Li CM for data collection, Xie HG, Qin B, Fan DS for manuscript review.

Funding

The grants from China Ministry of Education (No.IRT0810;B08006), National Natural Science Foundation of China (No.81473518, 81,573,824, 81,503,625), Beijing Municipal Science and Technology Commission (No.Z141107002515019), and Beijing Municipal Commission of Health and Family Planning (No.SF2014-1-4191).

Availability of data and materials

The datasets used and/or analyzed during the current study are available from the corresponding author on reasonable request.

Authors' contributions

TJZ, Shi J, SYY, WYY designed the research; WMQ, LT performed research; NJN, ZXX, LWW analyzed the data; SJ, LT, NJN prepared the paper. All authors read and approved the final manuscript.

Ethics approval and consent to participate

This study was approved by IRB of Dongzhimen Hospital affiliated to Beijing University of Chinese Medicine(ECPJ-BDY-2012-78). All patients involved consented to participate.

Consent for publication

A Not applicable.

Competing interests

The authors do not have any conflicts of interest. The funding organizations had no role in the design or conduct of the study; collection, management, analysis, or interpretation of the data; in the writing of the manuscript; or in the decision to submit the manuscript for publication.

Publisher's Note

Springer Nature remains neutral with regard to jurisdictional claims in published maps and institutional affiliations.

Author details

¹BUCM Neurology Centre at Dongzhimen Hospital, Beijing University of Chinese Medicine, No. 5 Haiyuncang Street, Dongcheng, Beijing 100700, China. ²School of Life Sciences, Beijing University of Chinese Medicine, No. 11 East road, North 3rd Ring Road, Beijing 100029, China. ³Consulting Center of Biomedical Statistics, The Academy of Military Medical Sciences, Beijing 100850, China. ⁴Institute of Basic Research in Clinical Medicine, China Academy of Chinese Medical Sciences, Beijing 100700, China.

Received: 20 July 2017 Accepted: 29 November 2017

Published online: 13 December 2017

References

- Chan KY, Wang W, Wu JJ, Liu L, Theodoratou E, Car J, et al. Epidemiology of Alzheimer's disease and other forms of dementia in China, 1990-2010: a systematic review and analysis. *Lancet*. 2013;381:2016-23.
- Farlow M, Anand R, Messina J Jr, Hartman R, Veach J. A 52-week study of the efficacy of rivastigmine in patients with mild to moderately severe Alzheimer's disease. *Eur Neurol*. 2000;44:236-41.
- Winblad B, Wimo A, Engedal K, Soinen H, Verhey F, Waldemar G, et al. 3-year study of donepezil therapy in Alzheimer's disease: effects of early and continuous therapy. *Dement Geriatr Cogn Disord*. 2006;21:353-63.
- Tariot PN, Farlow MR, Grossberg GT, Graham SM, McDonald S, Gergel I, et al. Memantine treatment in patients with moderate to severe Alzheimer disease already receiving donepezil: a randomized controlled trial. *JAMA*. 2004;291:317-24.
- Howard R, McShane R, Lindesay J, Ritchie C, Baldwin A, Barber R, et al. Donepezil and memantine for moderate-to-severe Alzheimer's disease. *N Engl J Med*. 2012;366:893-903.
- Liu J, Wang LN, Tian J. Recognition of dementia in ancient China. *Neurobiol Aging*. 2012;33:2948. e11-3

7. Tian J, Shi J, Zhang X, Wang Y. Herbal therapy: a new pathway for the treatment of Alzheimer's disease. *Alzheimers Res Ther.* 2010;2:30–3.
8. American Psychiatric Association. Diagnostic and statistical manual of mental disorders. 4th ed. Washington, DC: American Psychiatric Association; 1994. p. 134–5.
9. Tian J, Shi J, Wei MQ, Wang YY. Chinese version of clinical criteria for the diagnosis of Alzheimer's disease. *Chin J Front Med Sci (Electronic Version).* 2012;4:1–6.
10. Shi J, Wei MQ, Tian J, Snowden J, Zhang XK, Ni JN, et al. The Chinese version of story recall: a useful screening tool for mild cognitive impairment and Alzheimer's disease in the elderly. *BMC Psychiatry.* 2014;14:71.
11. Tian J, Xie HG, Qin B, Shi J, Wang YY, Wang XP, et al. Chinese guideline on application of brief cognitive tests in the diagnosis of dementia. *Natl Med J China.* 2016;96:2945–59.
12. Ni JN, Shi J, Wei MQ, Tian J, Jian WJ, Liu JP, et al. Screening mild cognitive impairment by delayed story recall and instrumental activities of daily living. *Int J Geriatr Psychiatry.* 2015;30:888–90.
13. Korf ES, Wahlund LO, Visser PJ, Scheltens P. Medial temporal lobe atrophy on MRI predicts dementia in patients with mild cognitive impairment. *Neurology.* 2004;63:94–100.
14. Mendiando MS, Ashford JW, Kryscio RJ, Schmitt FA. Modelling mini mental state examination changes in Alzheimer's disease. *Stat Med.* 2000;19:1607–16.
15. Zhang J. *Jing Yue Quan Shu*. Shanghai: Shanghai Scientific & Technical Publishers; 1996. p. 576.
16. Shi J, Tian J, Zhang XK, Zeng CY, Wei MQ, Wang PW, Wang YY. A combination extract of Renshen (Panax Ginseng), Yinyanghuo (Herba Epimedii Brevicornus), Yuanzhi (radix Palygalae) and Jianghuang (Rhizoma Curcumae Longae) decreases glycogen synthase kinase 3beta expression in brain cortex of APPV7171 transgenic mice. *J Tradit Chin Med.* 2013;33:211–7.
17. Tian J, Shi J, Zhang L, Yin J, Hu Q, Xu Y, et al. GEPT extract reduces A β deposition by regulating the balance between production and degradation of A β in APPV7171 transgenic mice. *Curr Alzheimer Res.* 2009;6:118–31.
18. Shi J, Zhang X, Yin L, et al. Herbal formula GAPT prevents beta amyloid deposition induced Ca²⁺/Calmodulin-dependent protein kinase II and Ca²⁺+/Calmodulin-dependent protein phosphatase 2B imbalance in APPV7171 mice. *BMC Complement Altern Med.* 2016;16:159.
19. Ni JN, Shi J, Zhang XK, et al. Effect of GAPT extract on expression of tau protein and its phosphorylation related enzymes in hippocampal neurons of APPV7171 transgenic mice. *Chin J Integr Med.* 2017;23:605–10.
20. Tu Y, Bi X, Luo W. Quality control of traditional Chinese medicine formula granules. *World Sci Technol.* 2011;13:41–6.
21. Wilcock G, Howe I, Coles H, Lilienfeld S, Truyen L, Zhu Y, et al. A long-term comparison of galantamine and donepezil in the treatment of Alzheimer's disease. *Drugs Aging.* 2003;20:777–89.
22. Wang SY, Liu JP, Ji WW, et al. Qifu-yin attenuates AGEs-induced Alzheimer-like pathophysiological changes through the RAGE/NF- κ B pathway. *Chin J Nat Med.* 2014;12(12):920–8.
23. Yang WT, Zheng XW, Chen S, et al. Chinese herbal medicine for Alzheimer's disease: clinical evidence and possible mechanism of neurogenesis. *Biochem Pharmacol.* 2017;141:143–55.
24. Schmitt B, Bernhardt T, Moeller HJ, et al. Combination therapy in Alzheimer's disease: a review of current evidence. *CNS Drugs.* 2004;18(13):827–44.
25. Matsunaga S, Kishi T, Iwata N. Combination therapy with cholinesterase inhibitors and Memantine for Alzheimer's disease: a systematic review and meta-analysis. *Int J Neuropsychopharmacol.* 2015;18(5):pyu115.
26. Canevelli M, Adali N, Kelaiditi E, et al. Effects of Gingko Biloba supplementation in Alzheimer's disease patients receiving cholinesterase inhibitors: data from the ICTUS study. *Phytomedicine.* 2014;21(6):888–92.
27. Ihl R, Frölich L, Dierks T, et al. Differential validity of psychometric tests in dementia of the Alzheimer type. *Psychiatry Res.* 1992;44(2):93–106.
28. Ihl R, Ferris S, Robert P, et al. Detecting treatment effects with combinations of the ADAS-cog items in patients with mild and moderate Alzheimer's disease. *Int J Geriatr Psychiatry.* 2012;27(1):15–21.

Submit your next manuscript to BioMed Central and we will help you at every step:

- We accept pre-submission inquiries
- Our selector tool helps you to find the most relevant journal
- We provide round the clock customer support
- Convenient online submission
- Thorough peer review
- Inclusion in PubMed and all major indexing services
- Maximum visibility for your research

Submit your manuscript at
www.biomedcentral.com/submit

