

HOSTED BY



ELSEVIER

Available online at [www.sciencedirect.com](http://www.sciencedirect.com)

ScienceDirect

journal homepage: [www.elsevier.com/locate/ajur](http://www.elsevier.com/locate/ajur)



ORIGINAL ARTICLE

# Pomegranate extract inhibits EMT in clear cell renal cell carcinoma in a NF- $\kappa$ B and JNK dependent manner



Jiabin An <sup>a</sup>, Yanchuan Guo <sup>b</sup>, Ting Wang <sup>a</sup>, Allan J. Pantuck <sup>c,\*</sup>,  
Matthew B. Rettig <sup>a,c,d,\*</sup>

<sup>a</sup> Department of Medicine, Division of Hematology-Oncology, VA Greater Los Angeles Healthcare System, Los Angeles, CA, 90073, USA

<sup>b</sup> Technical Institute of Physics and Chemistry, Chinese Academy of Science, Beijing, 100190, China

<sup>c</sup> Department of Urology, David Geffen School of Medicine at UCLA, Los Angeles, CA, 90095, USA

<sup>d</sup> Department of Medicine, Division of Hematology-Oncology, David Geffen School of Medicine at UCLA, Los Angeles, CA, 90095, USA

Received 15 July 2014; received in revised form 19 August 2014; accepted 29 August 2014

Available online 16 April 2015

## KEYWORDS

Pomegranate extract;  
von Hippel-Lindau  
(VHL) tumor  
suppressor;  
Clear cell renal cell  
carcinoma;  
c-Jun N-terminal  
kinase;  
Epithelial to  
mesenchymal  
transition;  
Nuclear factor kappa B

**Abstract** *Objective:* Clear cell renal cell carcinoma (ccRCC) is the most common subtype of renal cell carcinoma (RCC) and is characterized by biallelic inactivation of the *von Hippel-Lindau (VHL)* tumor suppressor gene. One effect of VHL inactivation is hypoxia inducible factor alpha (HIF $\alpha$ )-independent constitutive activation of nuclear factor kappa B (NF- $\kappa$ B) and c-jun N-terminal kinase (JNK). Both NF- $\kappa$ B and JNK drive ccRCC growth and epithelial to mesenchymal transition (EMT). The purpose of this study was to determine the biochemical effects of pomegranate juice extracts (PE) on RCC cell lines.

*Methods:* The pre-clinical effects of PE on NF- $\kappa$ B, JNK, and the EMT phenotype were assayed, including its effect on proliferation, anchorage-independent growth, and invasion of pVHL-deficient RCCs.

*Results:* PE inhibits the NF- $\kappa$ B and JNK pathways and consequently inhibits the EMT phenotype of pVHL-deficient ccRCCs. The effects of PE are concentration-dependent and affect not only biochemical markers of EMT (i.e., cadherin expression) but also functional manifestations of EMT, such as invasion. These effects are manifested within days of exposure to PE when diluted 2000-fold. Highly dilute concentrations of PE (10<sup>6</sup> dilution), which do not impact these pathways in the short term, were found to have NF- $\kappa$ B and JNK inhibitory effects and ability to reverse the EMT phenotype following prolonged exposure.

*Conclusion:* These findings suggest that PE may mediate inhibition growth of pVHL-deficient ccRCCs and raises the possibility of its use as a dietary adjunct to managing patients with

\* Corresponding authors.

E-mail addresses: [apantuck@mednet.ucla.edu](mailto:apantuck@mednet.ucla.edu) (A.J. Pantuck), [mrettig@mednet.ucla.edu](mailto:mrettig@mednet.ucla.edu) (M.B. Rettig).

Peer review under responsibility of Chinese Urological Association and SMMU.

<http://dx.doi.org/10.1016/j.ajur.2015.04.009>

2214-3882/© 2015 Editorial Office of Asian Journal of Urology. Production and hosting by Elsevier (Singapore) Pte Ltd. This is an open access article under the CC BY-NC-ND license (<http://creativecommons.org/licenses/by-nc-nd/4.0/>).

active surveillance for small, localized, incidentally identified renal tumors so as to avoid more invasive procedures such as nephrectomy.

© 2015 Editorial Office of Asian Journal of Urology. Production and hosting by Elsevier (Singapore) Pte Ltd. This is an open access article under the CC BY-NC-ND license (<http://creativecommons.org/licenses/by-nc-nd/4.0/>).

## 1. Introduction

Almost 65,000 new cases of kidney cancer are expected in the United States in 2014, of which 90% are renal cell carcinomas (RCC) [1]. RCCs consist of several subtypes, the most common of which is clear cell RCC (ccRCC), accounting for 80%–85% of all renal epithelial malignancies [1,2]. The genetic hallmark of both hereditary and sporadic forms of ccRCC is biallelic inactivation of the *von Hippel-Lindau (VHL)* tumor suppressor gene, the protein product of which, pVHL, encodes a component of an E3 ubiquitin ligase, the most well characterized target of which is hypoxia inducible factor alpha (HIF $\alpha$ ). In the context of biallelic *VHL* gene loss, mutation, or inactivation that occurs in upwards of 90% of sporadic ccRCCs, HIF $\alpha$  accumulates and induces a transcriptional program, including upregulation of cell cycle proteins (cyclin D, cyclin G2), angiogenesis factors (VEGF), and growth factors (TGF $\alpha$ ), that drives ccRCC oncogenesis [3,4].

Unfortunately, our ability to exploit the pVHL-HIF $\alpha$  interaction for therapeutic benefit of patients is hampered by the fact that efficient and selective restoration of *VHL* gene expression in tumor cells of actual patients is not achievable with current gene therapy technologies, and transcription factors such as HIF $\alpha$  are not readily amenable to drug development. Moreover, small molecule therapies that have come to the clinic over the last several years, including the tyrosine kinase inhibitors and rapamycin analogs that target select downstream targets of HIF $\alpha$ , have relatively modest impact on overall survival, which is not unexpected given that the HIF $\alpha$ -induced gene expression profile dozens of genes, many of which can drive tumor growth but are not inhibited by the aforementioned drug classes. As such, HIF $\alpha$ -independent effects of pVHL have been investigated and identified, and may represent drugable targets for therapeutic intervention. Nuclear factor kappa B (NF- $\kappa$ B) is constitutively activated in ccRCC patient specimens and drives pVHL-deficient ccRCC growth and EMT [5–9]. Recently, we have shown that the c-jun N-terminal kinase (JNK)/activator protein 1 (AP1) pathway is constitutively activated in pVHL-deficient RCCs in a HIF $\alpha$ -independent fashion, and can also promote EMT and tumorigenesis of ccRCCs [10].

Pomegranate extract (PE) has been shown to inhibit NF- $\kappa$ B in normal human cells, including chondrocytes, epidermal keratinocytes, and vascular endothelial cells [11–13]. We have also shown that PE blocks NF- $\kappa$ B activity in prostate cancer models both *in vitro* and *in vivo* [14]. Inhibition of JNK by PE in immune cells has been demonstrated as well [15]. PE also manifests JNK modulatory effects in prostate cancer [16]. Given the role of the NF- $\kappa$ B and JNK pathways in the EMT and tumorigenesis of ccRCC

and the potential of PE to inhibit these pathways, we investigated the ability of PE to inhibit constitutive NF- $\kappa$ B and JNK activity and EMT in ccRCC models.

## 2. Materials and methods

### 2.1. Reagents

PE is a standardized extract (POMX<sup>TM</sup>, provided by POM Wonderful, Inc., Los Angeles, CA, USA) of pomegranate fruit grown in California, USA (*Punica granatum* L., Wonderful variety, Paramount Farms, Lost Hills, CA, USA). PE is made from fruit skins standardized to ellagitannins (ETs), as punicalagins (37%–40%), and free ellagic acid (3.4%), as determined by high performance liquid chromatography (HPLC) using previously described methods [17]. 1000 mg of POMX powder includes up to 600 mg of polyphenol from extract, which delivers pomegranate polyphenols in an amount equivalent to about 8 oz of pomegranate juice. The original PE liquid represents the “1 $\times$ ” dilution. Further dilutions were made in culture medium to obtain the final concentrations employed for all experiments. PE dilutions that were employed for most experiments ( $\leq 48$  h) were generally between  $4 \times 10^{-4}$  and  $5 \times 10^{-2}$ . The IKK $\beta$  (IKK inhibitor IV) was purchased from Calbiochem (Gibbstown, NJ, USA; catalog 401480).

### 2.2. Cell lines

The RCC cell lines, ACHN and SN12C, which endogenously express wild-type pVHL, were transduced with a lentivirus that encodes VHL-specific shRNA or a scrambled control, and were a kind gift of Dr. George Thomas (Oregon Health Sciences University). These cell lines and the VHL shRNA sequences have been previously described [18].

### 2.3. Transient transfections and reporter gene assays

Cells were plated at  $10^5$  cells/well in 24-well plates the day prior to transfection. NF- $\kappa$ B or AP1 driven reporter constructs (p $\kappa$ B-luc and pAP1-luc, BD Sciences, Clontech, Mountain View, CA, USA; 1  $\mu$ g per well), which express *Firefly* luciferase, were co-transfected with the pRL-SV40 plasmid (Promega, Madison, WI, USA; 1 ng/well), the latter to normalize for transfection efficiency. The plasmids were transfected with Lipofectamine 2000 (Invitrogen, Carlsbad, CA, USA) according to the manufacturer's instructions. Protein was extracted 48 h after transfection, and *firefly* and *Renilla* luciferase were measured on a TD20/20 tube luminometer using a Dual Luciferase Assay kit

(Promega, Madison, WI, USA) according to the manufacturer's instructions.

#### 2.4. Electrophoretic mobility shift assays (EMSAs)

Wild-type and mutant  $\kappa$ B and AP1 double-stranded oligonucleotide probes were purchased from Santa Cruz Biotechnology (Santa Cruz, CA, USA). Fifteen  $\mu$ g of nuclear protein were combined with end-labeled, double-stranded oligonucleotide probe, 1  $\mu$ g of poly-dIdC (Amersham Pharmacia Biotech, Piscataway, NJ, USA), 1  $\mu$ g of BSA, and 5 mmol/L spermidine in a final reaction volume of 20  $\mu$ L for 20 min at room temperature. The DNA protein complex was run on a 4% non-denaturing polyacrylamide gel with 0.4 $\times$  TBE running buffer prior to subsequent autoradiography. Cold-competition experiments were performed with a 100-fold molar excess of cold wild-type or cold mutant  $\kappa$ B or AP1 oligonucleotides. For supershift assays, nuclear protein was pre-incubated with specific or control antibodies (6  $\mu$ g; purchased from Santa Cruz) for 20 min at room temperature. An identical strategy was employed for EMSAs with Oct-1 probes as a specificity control for the effects of PEs.

#### 2.5. Cell growth assay

Cells were seeded in 96-well plates at  $1.5 \times 10^4$  cells per well in 100  $\mu$ L of culture medium. Cell viability was assessed by the MTT (3,[4,5-dimethylthiazol-2-yl-] diphenyltetrazolium bromide) assay. Twenty-five  $\mu$ L of MTT (5 mg/mL) was added to each well for 3 h at 37  $^{\circ}$ C. Subsequently, 100  $\mu$ L of 10% sodium dodecyl sulfate/0.01 mol/L HCl was added overnight at 37  $^{\circ}$ C. Absorbance was measured at 570 nm on a microplate reader. All experiments were performed in quadruplicate.

#### 2.6. *In vitro* kinase assay

An *in vitro* kinase assay kit (Cell Signaling Technology, Danvers, MA, USA) was performed to measure the activity of JNK according to the manufacturer's instructions. An IKK $\beta$  *in vitro* kinase assay was modified as described [19]. Briefly, 250  $\mu$ g of whole cell lysates was immunoprecipitated with an anti-IKK $\beta$  antibody (1:50) and then mixed with 1  $\mu$ L recombinant GST-I $\kappa$ B (Cell Signalling Technology) in kinase buffer with 5  $\mu$ Ci of  $\gamma$ - $^{32}$ P-ATP for 30 min at 30  $^{\circ}$ C. The reaction was analyzed on a Tris-Glycine gel and subjected to autoradiography.

#### 2.7. Matrigel invasion assay

The matrigel invasion assay was performed according to the manufacturer's instructions (BD Biosciences, San Diego, CA, USA). Briefly,  $2.5 \times 10^4$  cells in 0.5 mL of medium containing 1% fetal bovine serum (FBS) were to the transwell insert, which was seated in 750  $\mu$ L of complete medium (10% FBS) with or without the IKK $\beta$  inhibitor (10  $\mu$ mol/L). After an overnight (12 h) incubation at 37  $^{\circ}$ C in a 5% CO<sub>2</sub> humidified atmosphere, non-invading cells were mechanically removed. Cells that had migrated through the matrigel were stained with the Diff-Quick staining kit (Dad Behring, Inc., Newark, DE, USA) according to the

manufacturer's instructions. Cells were counted in five representative microscopic fields (200 $\times$  magnification) and photographed.

#### 2.8. Western blotting

Western blotting was performed as previously described [19,20].

#### 2.9. Anchorage-independent growth assay

This assay was performed as described by us [19].

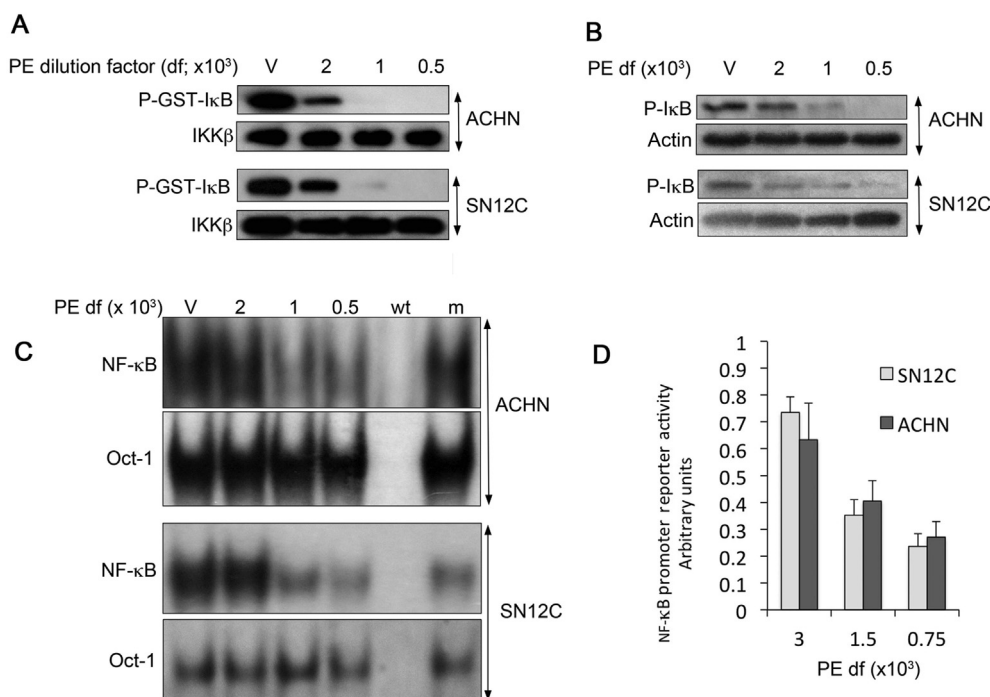
### 3. Results

#### 3.1. PE inhibits NF- $\kappa$ B and JNK activity in RCC cells

NF- $\kappa$ B activation that is driven by *VHL* loss induces expression of transcription factors such as Twist and Slug that suppress E-cadherin expression, increase N-cadherin expression, and heighten cellular invasiveness and anchorage-independent growth. We have previously shown that the SN12C-VHL<sup>low</sup> and ACHN-VHL<sup>low</sup> cell lines, which are isogenic partners of SN12C and ACHN stably transduced with VHL-specific shRNA, acquire an EMT phenotype consistent with their constitutive activation of NF- $\kappa$ B [18,20]. NF- $\kappa$ B activation is mediated through the IKK complex, which phosphorylates the NF- $\kappa$ B inhibitor, I $\kappa$ B, thereby marking it for ubiquitination and proteasome-dependent degradation. We and others have previously described that pVHL-deficient RCCs manifest increased NF- $\kappa$ B activity compared to isogenic cells that express wild-type pVHL [8,21]. Given the previously described NF- $\kappa$ B inhibitory effects of PE in other model systems [14], we investigated the effects of PE on constitutive NF- $\kappa$ B activity in pVHL-deficient RCC cells. Indeed, IKK activity as measured by *in vitro* kinase assays was inhibited in a concentration dependent fashion (Fig. 1A). The phosphorylation of I $\kappa$ B, the substrate of the IKK complex, was also reduced as demonstrated by Western blotting (Fig. 1B).

Upon degradation of I $\kappa$ B, NF- $\kappa$ B transcription factors, which reside in the cytoplasm in the quiescent state, are disinhibited and translocate to the nucleus, where they bind to  $\kappa$ B DNA binding sites in the regulatory regions of target genes. Inhibition of NF- $\kappa$ B binding to consensus  $\kappa$ B response elements by PE was demonstrated by electrophoretic mobility shift assays (EMSAs) as shown in Fig. 1C. Lastly, the functional effects of PE on the NF- $\kappa$ B pathway were illustrated by the concentration-dependent inhibition of NF- $\kappa$ B driven reporter gene activity (Fig. 1D).

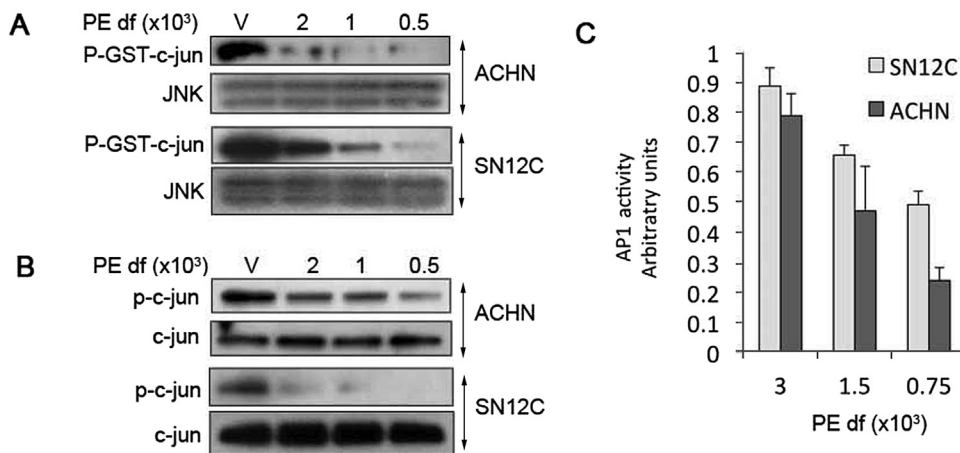
We recently reported that pVHL-deficiency was causally linked to constitutive activation of JNK, which in turn phosphorylates c-jun, leading to subsequent heterodimerization of phospho-c-jun to c-fos to form transcriptionally competent AP1 complexes [10]. AP1 induces expression of Twist, a key mediator of EMT that suppresses E-cadherin and induces N-cadherin expression [10]. The net effect of AP1 activation is heightened growth and tumorigenesis of pVHL-deficient ccRCCs [10]. In light of these AP1-mediated effects, we determined whether PE could inhibit JNK activity analogously



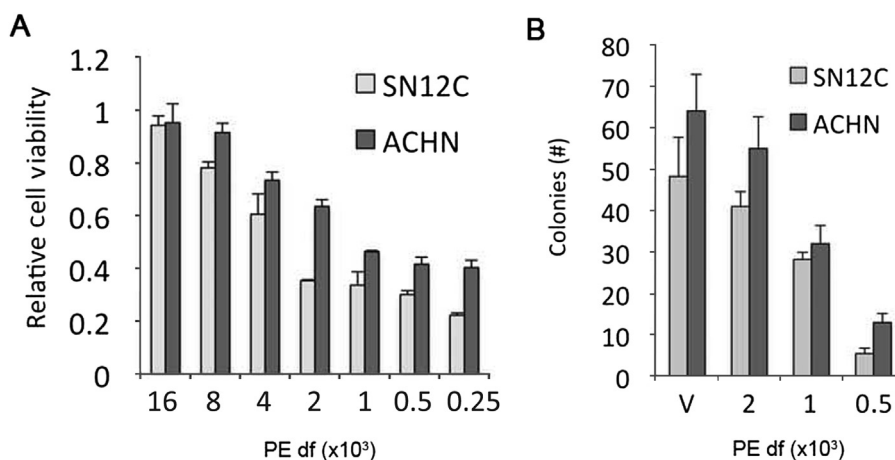
**Figure 1** PE inhibits constitutive NF- $\kappa$ B activity in pVHL-deficient RCCs. (A) IKK $\beta$  *in vitro* kinase assays. After overnight exposure of pVHL deficient RCCs (ACHN-VHL<sup>low</sup> and SN12C-VHL<sup>low</sup>) to the indicated dilutions of PE, IKK $\beta$  was immunoprecipitated and phosphorylation of a recombinant substrate, GST-I $\kappa$ B, was assessed by immunoblotting. The dilutions of PE are shown, with "V" indicating vehicle control. (B) Western blots for phosphorylated I $\kappa$ B after overnight exposure to the indicated dilutions of PE. (C) EMSAs for NF- $\kappa$ B after overnight exposure to PE. Cold competition experiments illustrate the specificity of the gel shifted bands: m, mutant  $\kappa$ B oligonucleotide probe; wt, wild-type  $\kappa$ B oligonucleotide probe. (D) NF- $\kappa$ B driven reporter assays after 48 h of PE exposure. Results are means  $\pm$  SD of triplicate experiments. Results were normalized to that of vehicle treated cells.

to its effects on the NF- $\kappa$ B pathway. PE inhibited the functional activity of JNK in a concentration-dependent fashion as measured by *in vitro* kinase assays (Fig. 2A). Moreover, phosphorylation of c-jun at serine 73, a phosphorylation site of

JNK, was reduced by PE in a similar manner (Fig. 2B). As further evidence of JNK blockade, a concentration dependent inhibition of AP1-driven reporter gene expression by PE was demonstrated (Fig. 2C).



**Figure 2** PE inhibits constitutive JNK activity in pVHL-deficient RCCs. (A) JNK *in vitro* kinase assays. After overnight exposure to PE, total JNK was immunoprecipitated, and JNK activity was measured by phosphorylation of recombinant GST-c-jun by immunoblotting. (B) Western blots for phosphorylated c-jun and total c-jun after overnight exposure to PE. (C) AP1 driven reporter assays performed 48 h of PE exposure. Results are means  $\pm$  SD of triplicate experiments. Results were normalized to that of vehicle treated cells.



**Figure 3** Effects of PE on *in vitro* growth on plastic and anchorage-independent growth in soft agar. (A) ACHN-VHL<sup>low</sup> or SN12C-VHL<sup>low</sup> cells were treated with the indicated dilutions of PE for 120 h. Total cell number was measured in MTT assays. Results are means  $\pm$  SD of quadruplicate experiments. (B) Anchorage-independent growth was assessed by growth of ACHN-VHL<sup>low</sup> or SN12C-VHL<sup>low</sup> in soft agar with the indicated dilutions of PE for 14 days. Results are means  $\pm$  SD of number of colonies per microscopic field (final magnification, 200 $\times$ ).

### 3.2. PE inhibits growth and EMT of pVHL-deficient RCCs

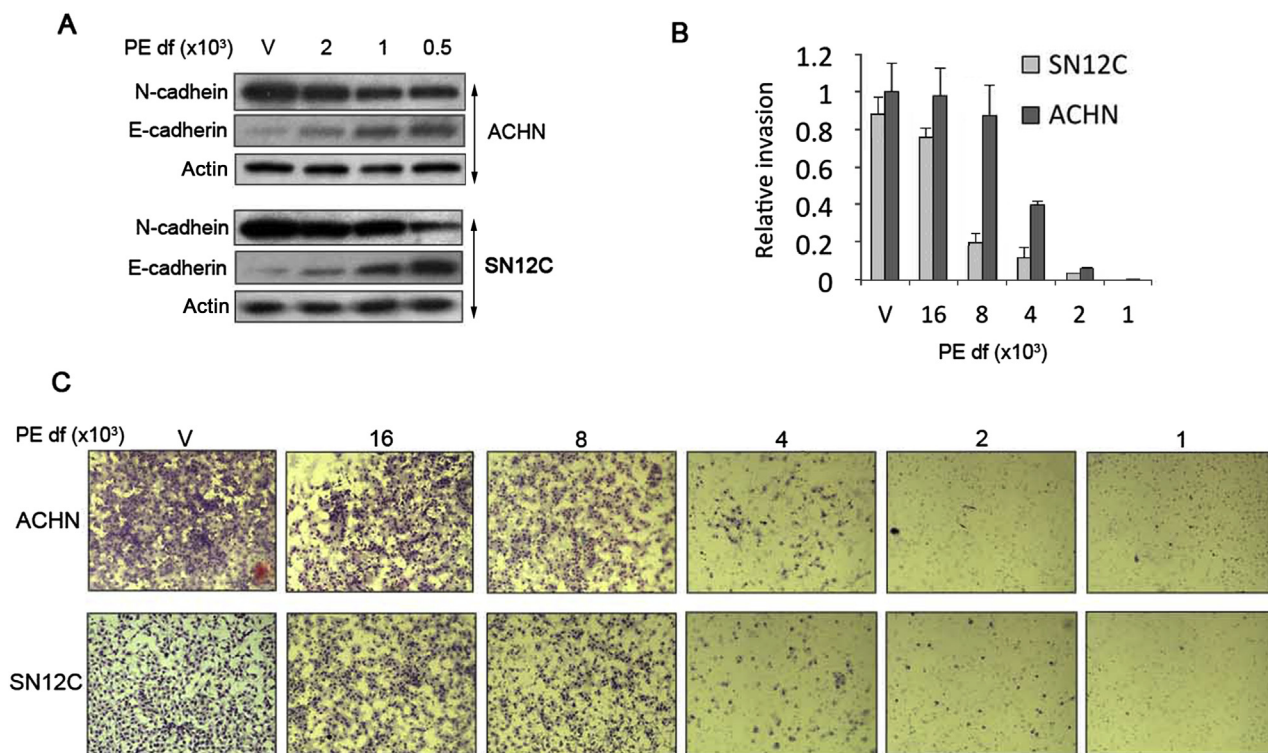
Given the NF- $\kappa$ B and JNK inhibitory properties of PE and the role of these signaling pathways in promoting proliferation, growth and EMT, we assessed the functional impact of PE on pVHL-deficient RCCs. PE inhibited the *in vitro* growth of both SN12C-VHL<sup>low</sup> and ACHN-VHL<sup>low</sup> cells in a concentration dependent manner as measured in MTT assays over 120 h (Fig. 3A). Next, we tested the effect of PE on anchorage-independent growth. PE reduced not only the size of individual colonies (not shown), an indicator of proliferation, but also the total number of colonies formed in soft agar (Fig. 3B), an *in vitro* marker of metastatic potential [22].

At baseline, pVHL-deficient ACHN and SN12C cells exhibit high N-cadherin and low E-cadherin expression characteristic of a mesenchymal phenotype (Fig. 4A). Upon exposure to PE, cells underwent a “cadherin switch” in which the heightened N-cadherin/low E-cadherin pattern reverted to a high E-cadherin/low N-cadherin pattern typified by epithelial cells (Fig. 4A). Importantly, PE also inhibited invasiveness of pVHL-deficient cells in a matrigel invasion chamber in a concentration-dependent manner, a hallmark of EMT (Fig. 4B and C); cell numbers were not significantly affected in pVHL-deficient cells during the overnight time course required for the matrigel invasion assay, indicating that the effects of PE on proliferation did not influence the results of the invasion assays. Taken together, our results indicate that PE inhibits growth and EMT of pVHL-deficient cells by inducing a reversion of the mesenchymal phenotype that is characteristic of pVHL-deficient RCCs to a phenotype that more closely resembles that of epithelial cells. These findings are consistent with previous reports demonstrating the plasticity of EMT in ccRCCs, which can undergo a reversion to an epithelial phenotype (i.e., a mesenchymal to epithelial transition or MET) upon inhibition of the JNK or NF- $\kappa$ B pathways [10,20].

### 3.3. Prolonged exposure to low concentrations of PE inhibits constitutive NF- $\kappa$ B and JNK activation and induces a “cadherin switch”

In the aforementioned experiments, we exposed SN12C-VHL<sup>low</sup> and ACHN-VHL<sup>low</sup> to concentrations of PE that were sufficient to inhibit molecular targets of interest over 24–48 h. In the following experiments, we determined whether substantially more dilute concentrations of PE, which perhaps may not exhibit NF- $\kappa$ B and/or JNK inhibitory activity over relatively short time periods, may in fact effectively inhibit these signaling pathways when cells are exposed to PE for prolonged durations (i.e. weeks).

We used PE at a 10<sup>6</sup> dilution of the stock solution and tested the effects of dilute PE on NF- $\kappa$ B and JNK activity as well as the expression of E-cadherin and N-cadherin. Effects of dilute PE on JNK and NF- $\kappa$ B were not observed until approximately 10 days of exposure; continued treatment led to further inhibition with robust blockade of both IKK and JNK activity observed after 24 days (Fig. 5). The reversal of cadherin expression manifested different kinetics for N-cadherin and E-cadherin. N-cadherin expression remained largely unaffected until Day 14, after which time its expression was reduced through Day 24 (Fig. 5). Conversely, E-cadherin expression was induced at earlier time points (i.e. Day 2) and reached maximal expression levels by Day 5 (ACHN) or Day 10 (SN12C). The relatively early change to E-cadherin expression in the absence of demonstrable inhibition of NF- $\kappa$ B or JNK suggests that biochemical signaling pathways independent of NF- $\kappa$ B and JNK may be operative in regulating E-cadherin expression in response to PE. This phenomenon does not exclude the role of NF- $\kappa$ B and JNK perhaps at later time points, especially given the abundance of previous reports causally linking these pathways to EMT and cadherin expression in pVHL-deficient models. Nonetheless, prolonged exposure to extremely dilute concentrations of PE led to a time dependent inhibition of constitutive NF- $\kappa$ B and JNK activity



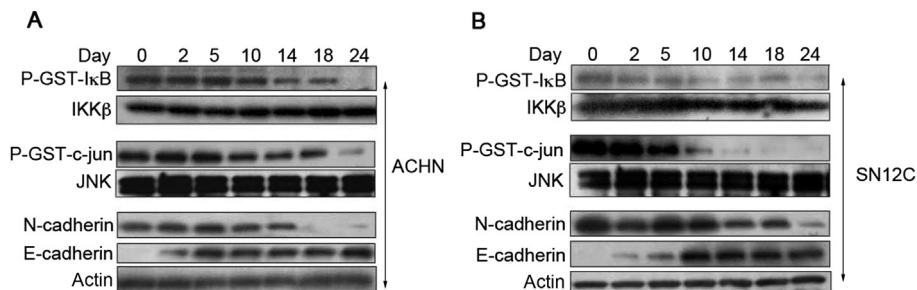
**Figure 4** Inhibition of EMT phenotype by PE. (A) PE induces a “cadherin switch”. Western blots for the indicated proteins after 48 h of exposure to the indicated dilutions of PE. (B) PE inhibits invasion of pVHL-deficient RCCs. Invasion was measured in a Matrigel invasion assay after overnight exposure to the indicated dilutions of PE. PE did not affect the overall number of cells during overnight exposure, so that the invasion results were not influenced by differences in cell number. Results are the means ± SD of the number of cells counted per microscopic field (final magnification, 200×). Results were normalized to that of vehicle treated cells. (C) Images of cell invasion assays.

and induced a “cadherin switch” characterized by increasing E-cadherin and decreasing N-cadherin expression consistent with reversion to an epithelial phenotype.

#### 4. Discussion

Approximately 65,000 cases of and 13,500 deaths attributable to kidney cancer are expected in the United States in 2012 [2]. Most kidney cancers are RCCs, and deaths are

caused by metastatic disease and its complications. Novel treatments, which include rapamycin analogs (e.g., everolimus and temsirolimus) and tyrosine kinase inhibitors (e.g., pazopanib, sunitinib, etc.) that target various plasma membrane (e.g., VEGFR) and intracellular kinases (e.g., Raf), are modestly and only transiently effective and do not eradicate the disease [23]. Thus, despite the advent of several agents to treat metastatic RCC, the disease remains essentially incurable.



**Figure 5** Highly diluted PE inhibits NF-κB and JNK activity and induces a “cadherin switch” over prolonged exposure times. (A) ACHN-VHL<sup>low</sup> and (B) SN12C-VHL<sup>low</sup> were exposed to highly dilute concentrations of PE (diluted 10<sup>-6</sup> in vehicle). Cells were then exposed to dilute PE for the indicated number of days, and IKKβ *in vitro* kinase assays (top panels), JNK *in vitro* kinase assays (middle panels), and Western blots for cadherins (bottom panels) were performed.

Efforts to identify signaling pathways that are hyper-activated in tumor cells as a result of “driver” genetic lesions such as biallelic inactivation of the von Hippel-Lindau tumor suppressor gene (*VHL*), can provide opportunities for therapeutic intervention. For example, the NF- $\kappa$ B pathway is constitutively activated in response to *VHL* loss and induces RCC growth and EMT [5–9,21]. Recently, we identified JNK activation in *VHL*-inactivated tumors; in this context, JNK induces EMT and heightened tumorigenesis [10]. Thus, both NF- $\kappa$ B and JNK represent pathways that appear to be primed for therapeutic intervention of ccRCC.

Here, we have shown that PE inhibits the NF- $\kappa$ B and JNK pathways and consequently inhibits the EMT phenotype of pVHL-deficient ccRCCs. The effects of PE are concentration-dependent and affect not only biochemical markers of EMT (i.e., cadherin expression) but also functional manifestations of EMT, such as invasion. Anchorage-independent growth was also inhibited. Whereas the antiproliferative effects of PE may account for the reduced colony size in anchorage-independent growth assays, the number of colonies is not affected by proliferation. Importantly, highly diluted concentrations of PE when maintained over a prolonged duration were also able to reverse EMT, a finding that may have clinical and translational implications in that low dose daily ingestion of PE may have anti-tumor effects. Additional *in vivo* studies will be warranted to further pre-clinically validate PE as a potentially active clinical approach to RCC. One particular scenario in which clinical usage of PE in this fashion may be particularly germane is in the management of incidentally identified small renal tumors. The incidence of RCCs has dramatically increased over the last 10–15 years, with the marked rise in incidence attributable to detection of early stage but not advanced stage tumors [24,25]. The increased usage of radiographic studies, including CT and ultrasonography are capturing incidental, small renal tumors. Many of these tumors have slow growth kinetics and fairly low risk for progression to more advanced stage [26–30]. The recognition that many small renal tumors demonstrate low malignant potential and that treatment may pose a greater risk than following patients over time has led to the concept of active surveillance. Initial active surveillance with delayed treatment for patients who progress has become an accepted practice in elderly patients or those with significant comorbidities in whom the risk of treatment is deemed high [26–30]. It is in this setting that PE consumption may have a clinical role in preventing the progression of small, incidentally detected RCCs from disease progression. Such an approach could obviate the need for invasive procedures, such as partial or radical nephrectomy or other techniques such as cryoablation and radiofrequency ablation. Of course, the use of PE for the long-term management of small renal tumors would require formal clinical investigation, but the results presented herein along with previous reports relating NF- $\kappa$ B and JNK activation to RCC progression provide the pre-clinical foundation for clinical trials aimed at demonstrating that PE can effectively prevent the progression or perhaps induce regression of small renal tumors, an increasing clinical problem arising from the heightened use of radiographic modalities for abdominal imaging.

## Conflicts of interest

The authors declare no conflict of interest.

## Acknowledgment

We thank George W. Thomas (Oregon Health Sciences University) for the SN12C and ACHN cell lines with stable expression of *VHL*-specific shRNA. This work was supported by a Merit Review grant from The Department of Veterans Affairs (M.B. Rettig) and Pom Wonderful (A.J. Pantuck).

This work was supported by a Merit Review grant (M.B.R.) from the Department of Veterans Affairs and by an unrestricted research grant Pom Wonderful (A.P.).

## References

- [1] DeSantis CE, Lin CC, Mariotto AB, Siegel RL, Stein KD, Kramer JL, et al. Cancer treatment and survivorship statistics, 2014. *CA Cancer J Clin* 2014;64:252–71.
- [2] Siegel R, DeSantis C, Virgo K, Stein K, Mariotto A, Smith T, et al. Cancer treatment and survivorship statistics, 2012. *CA Cancer J Clin* 2012;62:220–41.
- [3] Baba M, Hirai S, Yamada-Okabe H, Hamada K, Tabuchi H, Kobayashi K, et al. Loss of von Hippel-Lindau protein causes cell density dependent deregulation of CyclinD1 expression through hypoxia-inducible factor. *Oncogene* 2003;22:2728–38.
- [4] Semenza GL. Targeting HIF-1 for cancer therapy. *Nat Rev Cancer* 2003;3:721–32.
- [5] Oya M, Takayanagi A, Horiguchi A, Mizuno R, Ohtsubo M, Marumo K, et al. Increased nuclear factor-kappa B activation is related to the tumor development of renal cell carcinoma. *Carcinogenesis* 2003;24:377–84.
- [6] Yang H, Minamishima YA, Yan Q, Schlisio S, Ebert BL, Zhang X, et al. pVHL acts as an adaptor to promote the inhibitory phosphorylation of the NF-kappaB agonist Card9 by CK2. *Mol Cell* 2007;28:15–27.
- [7] An J, Fisher M, Rettig MB. VHL expression in renal cell carcinoma sensitizes to bortezomib (PS-341) through an NF-kappaB-dependent mechanism. *Oncogene* 2005;24:1563–70.
- [8] An J, Rettig MB. Mechanism of von Hippel-Lindau Protein-mediated suppression of nuclear factor kappa B (NF-kB) activity. *Mol Cell Biol* 2005;25:7546–56.
- [9] An J, Sun Y, Fisher M, Rettig MB. Maximal apoptosis of renal cell carcinoma by the proteasome inhibitor bortezomib is nuclear factor-kappaB dependent. *Mol Cancer Ther* 2004;3:727–36.
- [10] An J, Liu H, Magyar CE, Guo Y, Veena MS, Srivatsan ES, et al. Hyperactivated JNK is a therapeutic target in pVHL-deficient renal cell carcinoma. *Cancer Res* 2013;73:1374–85.
- [11] Afaq F, Malik A, Syed D, Maes D, Matsui MS, Mukhtar H. Pomegranate fruit extract modulates UV-B-mediated phosphorylation of mitogen-activated protein kinases and activation of nuclear factor kappa B in normal human epidermal keratinocytes paragraph sign. *Photochem Photobiol* 2005;81:38–45.
- [12] Ahmed S, Wang N, Hafeez BB, Cheruvu VK, Haqqi TM. Punica granatum L. extract inhibits IL-1beta-induced expression of matrix metalloproteinases by inhibiting the activation of MAP kinases and NF-kappaB in human chondrocytes in vitro. *J Nutr* 2005;135:2096–102.
- [13] Schubert SY, Neeman I, Resnick N. A novel mechanism for the inhibition of NF-kappaB activation in vascular endothelial cells

- by natural antioxidants. *FASEB J Off Publ Fed Am Soc Exp Biol* 2002;16:1931–3.
- [14] Rettig MB, Heber D, An J, Seeram NP, Rao JY, Liu H, et al. Pomegranate extract inhibits androgen-independent prostate cancer growth through a nuclear factor-kappaB-dependent mechanism. *Mol Cancer Ther* 2008;7:2662–71.
- [15] Rasheed Z, Akhtar N, Anbazhagan AN, Ramamurthy S, Shukla M, Haqqi TM. Polyphenol-rich pomegranate fruit extract (POMx) suppresses PMACI-induced expression of pro-inflammatory cytokines by inhibiting the activation of MAP Kinases and NF-kappaB in human KU812 cells. *J Inflamm (London, England)* 2009;6:1.
- [16] Koyama S, Cobb LJ, Mehta HH, Seeram NP, Heber D, Pantuck AJ, et al. Pomegranate extract induces apoptosis in human prostate cancer cells by modulation of the IGF-IGFBP axis. *Growth Horm IGF Res Off J Growth Horm Res Soc Int IGF Res Soc* 2010;20:55–62.
- [17] Seeram NP, Henning SM, Zhang Y, Suchard M, Li Z, Heber D. Pomegranate juice ellagitannin metabolites are present in human plasma and some persist in urine for up to 48 hours. *J Nutr* 2006;136:2481–5.
- [18] Thomas GV, Tran C, Mellinghoff IK, Welsbie DS, Chan E, Fueger B, et al. Hypoxia-inducible factor determines sensitivity to inhibitors of mTOR in kidney cancer. *Nat Med* 2006;12:122–7.
- [19] An J, Mo D, Liu H, Veena MS, Srivatsan ES, Massoumi R, et al. Inactivation of the CYLD deubiquitinase by HPV E6 mediates hypoxia-induced NF-kappaB activation. *Cancer Cell* 2008;14:394–407.
- [20] Pantuck AJ, An J, Liu H, Rettig MB. NF-kappaB-dependent plasticity of the epithelial to mesenchymal transition induced by Von Hippel-Lindau inactivation in renal cell carcinomas. *Cancer Res* 70:752–61.
- [21] Oya M, Ohtsubo M, Takayanagi A, Tachibana M, Shimizu N, Murai M. Constitutive activation of nuclear factor-kappaB prevents TRAIL-induced apoptosis in renal cancer cells. *Oncogene* 2001;20:3888–96.
- [22] Mori S, Chang JT, Andrechek ER, Matsumura N, Baba T, Yao G, et al. Anchorage-independent cell growth signature identifies tumors with metastatic potential. *Oncogene* 2009;28:2796–805.
- [23] Figlin R, Sternberg C, Wood CG. Novel agents and approaches for advanced renal cell carcinoma. *J Urol* 2012;188:707–15.
- [24] Smith SJ, Bosniak MA, Megibow AJ, Hulnick DH, Horii SC, Raghavendra BN. Renal cell carcinoma: earlier discovery and increased detection. *Radiology* 1989;170:699–703.
- [25] Hollingsworth JM, Miller DC, Daignault S, Hollenbeck BK. Rising incidence of small renal masses: a need to reassess treatment effect. *J Natl Cancer Inst* 2006;98:1331–4.
- [26] Lamb GW, Bromwich EJ, Vasey P, Aitchison M. Management of renal masses in patients medically unsuitable for nephrectomy—natural history, complications, and outcome. *Urology* 2004;64:909–13.
- [27] Bosniak MA, Birnbaum BA, Krinsky GA, Waisman J. Small renal parenchymal neoplasms: further observations on growth. *Radiology* 1995;197:589–97.
- [28] Volpe A, Panzarella T, Rendon RA, Haider MA, Kondylis FI, Jewett MA. The natural history of incidentally detected small renal masses. *Cancer* 2004;100:738–45.
- [29] Rendon RA, Stanietzky N, Panzarella T, Robinette M, Klotz LH, Thurston W, et al. The natural history of small renal masses. *J Urol* 2000;164:1143–7.
- [30] Wehle MJ, Thiel DD, Petrou SP, Young PR, Frank I, Karsteadt N. Conservative management of incidental contrast-enhancing renal masses as safe alternative to invasive therapy. *Urology* 2004;64:49–52.