



Published in final edited form as:

Biol Psychiatry. 2018 February 01; 83(3): 284–295. doi:10.1016/j.biopsych.2017.08.013.

Expression of the PPM1F gene is regulated by stress and associated with anxiety and depression

Aliza P. Wingo^{1a,1}, Eric Velasco², Antonio Florido², Adriana Lori¹, Dennis C. Choi³, Tanja Jovanovic¹, Kerry J. Ressler⁴, and Raul Andero^{5,#}

^{1a}Atlanta VAMC, Atlanta, 1670 Clairmont Road Decatur, GA, 30033, USA

¹Department of Psychiatry and Behavioral Sciences, Emory University School of Medicine, Atlanta, 201 Dowman Drive, GA, 30322, USA

²Institut de Neurociències, Universitat Autònoma de Barcelona, Bellaterra, Barcelona, Spain, 08193

³Neuroscience Institute, Georgia State University, 100 Piedmont Ave SE, Atlanta, GA 30303, USA

⁴Department of Psychiatry, McLean Hospital, Harvard Medical School, Belmont, 115 Mill St, Belmont, MA, 02478, USA

⁵Institut de Neurociències, CIBERSAM, Unitat de Psicobiologia (Facultat de Psicologia), Universitat Autònoma de Barcelona, Bellaterra, Barcelona, Spain, 08193

Abstract

Background—Molecular mechanisms underlying psychological sequelae of exposure to stressful experiences, such as Post-Traumatic Stress Disorder (PTSD) and depression, are not well understood.

Methods—Using convergent evidence from animal and human transcriptomic and genomic studies, we aimed to identify genetic mechanisms underlying depression and anxiety after traumatic experiences.

Results—From a transcriptome-wide analysis in mice, we found the *Ppm1f* gene to be differentially expressed in the amygdala and medial prefrontal cortex (mPFC) a week after immobilization stress. Next, we found that *PPM1F* mRNA levels in human blood were down-regulated in cases with symptoms of comorbid PTSD and depression (PTSD&Dep), and consistently in cases with anxiety symptoms in a separate human dataset. Furthermore, we showed that a genetic variant of *PPM1F*, rs17759843, was associated with PTSD&Dep and with *PPM1F* expression in both human brain and blood. Given prior reported mechanistic links between *PPM1F* and *CAMK2*, we examined blood mRNA level of *CAMK2G* in human and found it to be

#Corresponding author: Raül Andero, PhD, Institut de Neurociències, Unitat de Psicobiologia (Facultat de Psicologia), Universitat Autònoma de Barcelona, CIBERSAM, Contact, Office M1-141, UAB Campus, Bellaterra, 08193, Barcelona, Spain, raul.andero@uab.cat, Ph +34 93 581 33 42, Fax +34 93 581 41 52.

Publisher's Disclaimer: This is a PDF file of an unedited manuscript that has been accepted for publication. As a service to our customers we are providing this early version of the manuscript. The manuscript will undergo copyediting, typesetting, and review of the resulting proof before it is published in its final citable form. Please note that during the production process errors may be discovered which could affect the content, and all legal disclaimers that apply to the journal pertain.

lower in PTSD&Dep. We also found that *Ppm1f* protein levels and its colocalization with *Camk2G* were altered in the amygdala and mPFC of male mice. Additionally, we found that a systemic dose of corticosterone blocked the depressive-like phenotype elicited by stress in female mice. Lastly, corticosterone rescued the anxiety-like phenotype and mRNA levels of *Ppm1f* in the amygdala and mPFC in male mice and in the mPFC of female mice.

Discussion—Taken together, our data suggest a mechanistic pathway involving *PPM1F* and *CAMK2G* in stress and trauma-related manifestation of anxiety and depression across species.

Keywords

Stress; Anxiety; Depression; PPM1F; Camk2g; PTSD

Introduction

Exposure to stressful or traumatic life experiences increases risks of developing depressive disorders, anxiety disorders, or post-traumatic stress disorder (PTSD) (1). Anxiety and depressive disorders rank at the top of disabling mental illnesses causing tremendous economic costs to society (2). However, effectiveness of pharmacological treatments for anxiety and depressive disorders still remains rather limited with small effect sizes (3, 4). To facilitate efforts in developing novel treatments for these disorders, better insights into molecular mechanisms underlying anxiety and depression are needed.

With the goal of elucidating molecular mechanisms underlying anxiety and depression after traumatic experiences, we used convergent evidence from both animal and human studies. We note that among susceptible individuals, PTSD and depression are often comorbid (PTSD&Dep) (5). The shared symptoms and relatively high prevalence of PTSD and depression comorbidity suggest that examining their comorbidity in the aftermath of trauma may be a more powerful approach than examining either outcome alone. In addition, animal stress models leading to similar PTSD-like or depression-like behaviors can facilitate our efforts in uncovering their neurobiological mechanisms (6, 7).

Methods

Animals

All experiments were performed on adult wild-type C57BL/6J mice obtained from Jackson Labs. Male and female mice were group-housed in a temperature-controlled vivarium, with ad libitum access to food and water. See detailed methods for ethics protocols. Female mice were used only when explicitly stated, otherwise only male mice were used.

Immobilization Stress

Immobilization Stress (IMO) procedures, as previously described (8–10), were conducted in a room separate from housing and behavioral paradigms (11). All mice were habituated to the test chambers before the IMO stress and received exposure to handling and the training context completely separate and distinct from the IMO context (9). We chose the 6–8 days post-IMO time point because we wanted to compare these results with our previous findings studying gene regulation at this same time point (8,9,11,12).

Microarray hybridization and analysis

Mice were sacrificed under basal conditions (Home Cage *Control Group*) at 6 or 8 days after a 2 hour immobilization (IMO *Stress Group*). The reason for having two amygdala microarrays was to replicate the findings on day 6 with those on day 8 and get more robust results. Amygdala and medial prefrontal cortex (mPFC) tissue from both hemispheres was extracted by 1mm micropunch. Total RNA was extracted from the tissue and purified with the RNeasy Mini Kit catalog #74106 (Qiagen) following the manufacturer's instructions. Illumina Mouse WG-6 v2 Expression BeadChip microarray was assayed for 45,281 transcripts. These microarray are available at GEO #GSE100086. Plots of principal variance component analysis and volcano plots are in Supplemental Figure S1.

Bioinformatics of the microarray analysis

The top genes regulated after stress in the Amygdala and mPFC were further analyzed with DAVID Bioinformatics 6.8 to understand their functions. Note that *Ppm1f* was the only top gene present in all the microarrays (Figure 1A–E).

Reverse Transcription and PCR Quantification

Protocol was followed as previously described (8).

RT-PCR arrays

RNA was isolated and reverse transcribed as outlined in the section above. We used a custom plate format 24 × 4 catalog #CAPM10412 (Applied Biosystems, Carlsbad, CA).

Elevated plus maze

The elevated plus maze was performed as previously described (12).

Tail suspension test

Mice were suspended with duct tape ~2 cm at the end of the tail. The session lasted for 6 minutes. Behavior was recorded by a video camera and a researcher blind to the experimental groups analyzed the immobility time.

Mouse fear conditioning

Mice were fear conditioned in standard rodent modular test chambers (ENV-008-VP; Med Associates Inc, St. Albans, VT) with an inside area of 30.5cm (L) × 24.1cm (W) × 21.0cm (H). Mice received 5 trials of a conditioned stimulus (CS; 30 second tone, 6 kHz, 70 dB) co-terminating with a footshock (500ms, 0.6mA) unconditioned stimulus (US).

Gene expression profiles in human GTP participants

Participants were recruited from Atlanta inner-city residents by the Grady Trauma Project (GTP) (13–15). This study was approved by the Institutional Review Board of Emory University School of Medicine and Grady Memorial Hospital.

PTSD symptoms were assessed with the modified PTSD Symptom Scale (PSS) (16). Depressive symptoms were measured with the Beck Depression Inventory (BDI)(17). Cases

with current symptoms of comorbid PTSD and depression (PTSD&Dep) were defined as having PSS ≥ 14 and BDI ≥ 14 . Controls were defined as not having either PTSD or depressive symptoms, as reflected by a PSS ≤ 7 and BDI ≤ 7 , despite being exposed to trauma. See Supplementary Methods for rationale behind these cutoff scores. Of note, these participants were not part of a rigorously assessed clinical sample.

RNA was extracted from blood collected in the morning. All samples had RNA Integrity Number (RIN) ≥ 6 . Raw probe intensities were generated on Illumina HumanHT-12 v3 or v4 BeadChip arrays. We performed normalization of probe intensities using the Supervised Normalization of Microarray algorithm (18), removing the effects of batch and RIN. Association between mRNA level of a gene of interest and PTSD&Dep status was examined using multiple linear regression adjusting for gender, age, and population substructure.

Center for Health Discovery and Well Being (CHDWB) replication sample and gene expression profiles

The CHDWB project evaluated effectiveness of a health- and prevention-focused approach (19). Anxiety symptoms were assessed with the GAD-7 scale (20), a well-validated and efficient tool for screening anxiety symptoms. A score of 5–9 on the GAD-7 indicates mild anxiety, 10–14 moderate, and 15–21 severe anxiety symptoms (20). We categorized participants with GAD-7 scores ≥ 5 as having anxiety symptoms and those with GAD-7 scores ≤ 4 as controls.

RNA was extracted from whole blood and all samples had RIN >7 . Probe intensities were generated on Illumina HT12 v3 or v4 beadchip arrays. We performed normalization using the Supervised Normalization of Microarrays (18). Human *PPM1F* microarrays from CHDWB are available at GEO #GSE61672.

PPM1F genotypes and principal components among GTP participants

DNA was extracted from saliva or blood, and genotyping was conducted using Illumina's HumanOmni1-Quad. Standard quality control of the genotyping was performed using PLINK (21), removing individuals with $>2\%$ missing data and removing one in each pair of related individuals with an identity by descent proportion >0.12 (indicating cousins or a closer relation). We used principal component analysis to infer axes of ancestry and remove outlier subjects following methods previously described (22). Association between *PPM1F* single nucleotide polymorphisms (SNPs) and PTSD&Dep was examined using PLINK, adjusting for gender and 10 PCs. Multiple testing was addressed with permutation (23).

eQTL analysis

Association between rs17759843 and blood mRNA level of *PPM1F* was provided by the *Blood eQTL browser* (genenetwork.nl/bloodeqtlbrowser) (24). Quality control for this dataset was described in detail by Westra and colleagues (24).

Postmortem eQTL Analysis

Association between rs17759843 and brain mRNA level of *PPM1F* was provided by Brain Cloud, which has gene expression profiles from the dorsolateral prefrontal cortex of 269 subjects without neuropathological and neuropsychiatric diagnosis (25).

Results

Behavior and gene expression profiles in Amygdala and mPFC of stressed mice

We performed transcriptome-wide differential expression analysis of genes in the Amygdala and mPFC in mice 6 and 8 days after immobilization (IMO) stress versus controls. We examined gene expression profiles in the Amygdala at 6 days and 8 days after IMO stress to determine if the long-term gene expression changes found at 6 days were also sustained at 8 days. Figures 1A–D show the heatmaps revealing differences in the gene expression in stressed versus control mice groups. Of the probes that were differentially expressed at unadjusted $p < 0.05$ in the Amygdala, we used the following criteria to select probes for follow-up: a) probe differentially expressed at unadjusted p -value < 0.05 at both 6 days and 8 days after stress; b) probe with > 1.5 fold change between cases and controls; c) probe is expressed at moderate to high levels in the Amygdala (through search in the Allen Brain Atlas). Supplemental Table S1 lists the 24 probes that met these criteria. Of note, without adjusting for multiple testing, there is an increased risk of false positives. Therefore, we performed replication of these probes in different mouse cohorts to determine if they were differentially expressed between cases and controls using RT-PCR. Of these 24 probes, 21 had available primers for the RT-PCR replication (Supplemental Table S2). Supplemental Table S3 lists the results of the PCR replication in the Amygdala. We found five probes whose altered mRNA levels were replicated with PCR; *Ppm1f* was one of them. Along with our replication studies, we showed that these gene expression changes, which occurred 6 to 8 days after IMO, may need an incubation period because no significant changes in gene expression were found 1 day after exposure to stress (Supplemental Table S3). Interestingly, although *Ppm1f* is significantly regulated 6–8 days post-stress, it is not regulated in the Amygdala 30 minutes or 2 hours after fear conditioning (FC) nor in the mPFC 2 hours after FC (Supplemental Figure S2). Thus, *Ppm1f* appears to have a dynamic expression after stress in the brain. Moreover, only five of these genes were significantly regulated after stress - *Hbp1*, *Ssbp4*, *Fbx15*, *Ppm1f* and *Fhl1* – at three different time points: 6, 7 and 8 days after IMO (Supplemental Table S3). Thus, we examined the expression of these five genes in human. Among them, only *PPM1F* was differentially expressed between cases with symptoms of PTSD&Dep versus controls (Supplemental Table S4; more detailed description to follow).

We followed similar criteria to select probes with unadjusted p -value < 0.05 from the mPFC transcriptome-wide differential analysis for further replication in a mouse microarray (more details in Supplemental Methods). See Supplemental Table S5 for the list of genes that survived the filtering criteria and were followed up with RT-PCR replication. The number of top-regulated genes within these microarrays and their overlap are represented in Figure 1E. *Ppm1f* was the only gene highly regulated in all the three mouse microarray conditions.

Behaviorally, two groups of mice were exposed to IMO stress and 6 days later they were tested in the elevated plus maze (EPM, anxiety-like behavior) or the tail suspension test (TST, depressive-like behavior). The EPM results showed that stress reduced the time mice spent in the open arms (Figure 1F top, $t=4.597$ $df=14$, $p=0.0004$). Moreover, the TST analysis revealed that stress increased the time mice spent in immobility (Figure 1F down, $f=2.280$, $df=7$, $p=0.0361$).

Brain functions altered after acute stress, network analysis and predicted interactions with drugs

We performed bioinformatics analyses of the shared genes that had altered expression in the microarray. The list of the genes studied with DAVID are in Supplemental Tables S1 and S5 and Supplemental Figure S3. We found that the top three functions altered in both the Amygdala and mPFC were phosphoproteins (including *Ppm1f*), alternative splicing, and splice variants (Figure 2A). A more detailed functional analysis with IPA showed the biological pathways that were most different between stress and control animals included cell morphology, gene expression, and cellular development (Figure 2B). Supplemental Figure S4 shows that PPM1F has direct relationships with the CaMK2 family and indirect relationships with brain-derived neurotrophic factor (BDNF), cAMP response element-binding (CREB), extracellular signal-regulated kinase 1/2 (Erk 1/2) and (Mitogen-activated protein kinase kinase) Map2K 1/2.

Examine expression of the above five genes in comorbid PTSD & Depression

We next examined expression of the five genes identified to be significantly differentially regulated in mouse Amygdala after exposure to stress in 230 GTP human participants who were exposed to at least one traumatic experience. Their sociodemographic characteristics are presented in Supplemental Table S6. Of these participants, 142 were cases with PTSD&Dep symptoms and 88 were controls with no PTSD and no depressive symptoms. Among these five genes, *PPM1F* (ILMN_2059535) was significantly associated with PTSD&Dep after adjusting for gender, age, and population substructure ($\beta=0.135$; $p=0.005$; Bonferroni adjusted $p=0.025$; $N=230$). Cases with PTSD&Dep symptoms had lower *PPM1F* expression than controls (Figure 3A). Notably, *PPM1F* is highly expressed in the brain in both mice and humans (Supplemental Figure S5).

PPM1F in anxiety in a replication sample

Given that PTSD patients present with anxiety symptoms, we examined blood mRNA of *PPM1F* (ILMN_2059535) in anxiety in the CHWDB cohort, which has 151 cases with anxiety symptoms and 165 controls ($N=316$). Their characteristics are presented in Supplemental Table S7. We found that *PPM1F* was significantly down-regulated in patients with anxious symptomatology versus controls after adjusting for gender and ethnicity ($p=0.044$, $N=316$, Figure 3B, Supplemental Table S7), consistent with the association found in the GTP sample.

Association between PPM1F SNPs and PTSD&Dep

Having identified *PPM1F* mRNA expression level to be significantly associated with PTSD, depression and anxiety, we next investigated whether certain *PPM1F* SNPs influence this association. To this end, we examined the association between *PPM1F* SNPs and PTSD&Dep, and whether the identified significant SNPs influenced *PPM1F* expression level in blood and brain. In the GTP human dataset, there was a total of 14 tagging SNPs for *PPM1F*. Among these SNPs, rs17759843, located in the 3' UTR of *PPM1F*, was significantly associated with PTSD&Dep after adjusting for sex and 10 genetic principal components (OR=0.53; p=0.0046; permuted p=0.0463; N=2361; Figure 4). The minor allele of rs17759843 was associated with lower odds for comorbid PTSD&Dep (Figure 4). rs17759843 has a MAF of 0.018 and *p*-value for departure from HWE of 0.6 in the unaffected population and 1 in affected population.

PPM1F rs17759843 influences expression of PPM1F in human blood

Since we found rs17759843 significantly associated with PTSD&Dep, we examined whether this SNP is associated with human blood *PPM1F* mRNA level in 358 GTP participants. There was no significant association between this SNP and *PPM1F* mRNA level after adjusting for sex, age, and population substructure (p=0.635, N=358). However, when we looked at the Blood eQTL browser (24) of 5300 human samples, there was a highly significant association between rs17759843 and *PPM1F* (p=6.1 × 10⁻²⁵, FDR=0.00; effect size Z-score = 10.31). Specifically, the minor allele of rs17759843 was associated with higher expression of *PPM1F*. This directionality is consistent with our genetic and gene expression findings in the GTP sample, in which the minor allele of rs17759843 was significantly associated with lower probability of having PTSD&Dep, and that controls had higher expression of *PPM1F* relative to that of PTSD&Dep cases. With a larger sample size and thus more power, we conclude that rs17759843 is indeed a blood cis-eQTL for *PPM1F* mRNA expression in humans.

rs17759843 influences expression of PPM1F in human brain

Since *Ppm1f* mRNA level was upregulated in the amygdala and downregulated in the mPFC of stressed mice, which is consistent with another published study (26), we examined whether rs17759843 is associated with brain mRNA level of *PPM1F* in the publicly available BrainCloud dataset, which has human gene expression profiles of the prefrontal cortex. There was a total of three probes for *PPM1F* in this dataset. Of these, two probes had significant association with *PPM1F*: Probe 8896: p=0.0032, Bonferroni-adjusted p=0.0097; and Probe 16009: p=0.0004, Bonferroni-adjusted p=0.0012. In sum, rs17759843 is significantly associated with *PPM1F* mRNA level in human prefrontal cortex.

CAMK2

Since PPM1F regulates calcium/calmodulin-dependent protein kinase 2 (CaMK2) in neuronal cells (27, 28) and fibroblasts (29), we examined blood mRNA level of *CaMK2* in PTSD&Dep. After QC, the human dataset had three probes for *CaMK2* (one for *CaMK2D* and two for *CaMK2G*; none for *CaMK2A* or *CaMK2B*). Of these three probes, the *CaMK2G* probe had significantly lower expression in cases with PTSD&Dep symptoms

versus controls after adjusting for gender, age, and population substructure ($\beta=0.072$; $p=0.0158$; Bonferroni corrected $p = 0.0474$, $N=230$; Supplemental Figure S6A–B).

We analyzed *Camk2g* in the mouse brain because it was the CaMK2 isoform that was most significantly regulated in our human dataset. After stress *Camk2g* mRNA was marginally upregulated in the mouse amygdala 6 days after IMO ($t=2.213$, $df=8$, $p=0.058$, Supplemental Figure S6C). However, *Camk2g* expression was not regulated in mouse amygdala 2 hours after FC in mice with or without a previous exposure to stress (Supplemental Figure S6D).

Immunohistochemistry of Ppm1f and Camk2g

Ppm1f protein levels were upregulated in the Central amygdala (CeA), Basolateral amygdala (BLA), the summatory of CeA+BLA (Total Amygdala) and the mPFC in male mice 6 days after stress IMO (Supplemental Figure S7). Moreover, Ppm1f levels in the BLA were also upregulated in female mice 6 days after IMO (Supplemental Figure S8). Camk2g levels were upregulated in the CeA, BLA, Total Amygdala and mPFC in male mice 6 days after IMO (Supplemental Figure S9). However, there were no changes in Camk2g levels 6 days after IMO in female mice (Supplemental Figure S10). Figure 5 shows that IMO enhances the colocalization of Ppm1f and Camk2g in the Prelimbic cortex (PrL) ($t= -2.308$, $df=12$, $p=0.046$), Total Amygdala ($t= -2.598$, $df=24$, $p=0.017$) and the mPFC in male mice ($t= -2.814$, $df=41$, $p=0.008$) (Figure 5). See Figure 6 for representative images of these immunohistochemistry studies.

Corticosterone and Ppm1f

Vehicle or corticosterone was given 1 hour after IMO in male and female mice. 6 days later TST, EPM and mRNA levels were evaluated. In males, there was a significant increase in total immobility as measured by TST in IMO+Veh ($t=-2.328$, $df=14$, $p=0.037$, Figure 7A) and IMO+CORT ($t=-2.45$, $df=14$, $p=0.029$, Figure 7B) groups compared to Control+Veh group. In females, there was a significant increase in total immobility as measured by a TST in IMO+Veh ($t=-2.394$, $df=8$, $p=0.044$, Figure 7C) compared to Control+Veh group. Analysis in males of the EPM showed significant differences in the time in open arms [$F(2,21)=10.358$; $p=0.001$, post-hoc IMO-Veh $p=0.001$ vs the other groups], entries to open arms [$F(2,21)=11.902$; $p=0.000$, post-hoc $p=0.0001$ vs the other groups], time in closed arms [$F(2,21)=9.691$; $p=0.001$, post-hoc $p=0.001$ vs the other groups] and entries to closed arms [$F(2,21)=5.762$; $p=0.010$, post-hoc $p=0.033$ vs the other groups]. The EPM results in females showed a significant effect for treatment on the total number of entries to closed arms [$F(2,21)=6.879$; $p=0.005$]. Post-hoc comparisons revealed an increased number of entries to closed arms in IMO+Veh ($p=0.023$) and IMO+Cort group ($p=0.002$) compared to Control+Veh group. Analysis of the mRNA levels in males showed that the IMO+Veh group presented enhanced levels of *Ppm1f* compared to Control group ($t=2.383$, $df=13$, $p=0.0331$, Figure 7M) in the Amygdala and decreased levels in the mPFC ($t=2.321$, $df=13$, $p=0.0371$, Figure 7N). The mRNA levels in females were upregulated in mPFC in the group IMO+Veh vs Control+Veh ($t= 3.248$ $df=13$ $p=0.0064$, Figure 7P) and also in the group IMO+Cort vs Control+Veh in the Amygdala ($t=2.579$, $df=14$, $p=0.0218$, Figure 7S).

Discussion

Here, we found that *Ppm1f* mRNA levels were significantly altered in the amygdala and mPFC after stress exposure in a mouse model. Furthermore, we demonstrate that the human blood mRNA level of *PPM1F* was significantly down-regulated in PTSD&Dep. Moreover, we show that a genetic variant in the 3' UTR of *PPM1F*, rs17759843, was significantly associated with PTSD&Dep and with mRNA levels of *PPM1F* in human blood as well as brain. Additionally, we found that one of the substrates of *PPM1F*, *CAMK2G*, had significantly down-regulated blood mRNA levels in PTSD&Dep, which is consistent with *CAMK2* being a substrate of *PPM1F*. Consistently, *Ppm1f* protein levels and its colocalization with *Camk2G* were altered in the Amygdala and mPFC of male mice. Taken together, our findings suggest a novel and critical role of *PPM1F* in association with stress, anxiety, and depressive symptoms following trauma exposure.

PPM1F is a protein phosphatase and a member of the PP2C family of Ser/Thr protein phosphatases, which are negative regulators of stress response pathways. Calcium/calmodulin-dependent protein kinase II gamma is one of the substrates of this phosphatase (27–29). Interestingly, *Ppm1f* expression in mice was not altered at early time points after an aversive learning paradigm nor 1 day after IMO stress. A potential interpretation is that these changes in basal expression of *Ppm1f* require about a week to develop in mice. Also, it is possible that *Ppm1f* changes may not be related to fear learning, per se, or are not detected at the timing of the collection of the brain tissue in these experiments. In fact, our data suggest that it may be a marker of the chronic effects of prior trauma exposure.

Ppm1f specifically dephosphorylates *Camk2* in rat neurons *in vitro* and in cells (30). This results in an inactive form of CaMK2. CaMK2 is critical in serotonergic regulation of prefrontal cortex neuronal activity, which plays a major role in depression, suicide, anxiety, and schizophrenia (31–33), and which may explain the neuropsychiatric behavioral patterns seen in CaMK2 knockout mice (34). CaMK levels in the brain have been previously associated with anxiety (35), depression (36), and suicide victims (37). Our present data suggests that PPM1F could be an upstream regulator – activated by traumatic stress – of CaMK, promoting the development of anxiety and depression-like symptoms. However, the consequences of regulation of PPM1F by stress could have broader implications than described here because of ubiquitous expression of PPM1F in the body and brain. For example, PTSD and depression have been associated with higher rates of coronary heart disease (38–40) and knowledge of the underlying mechanisms for this association is still limited. Since CaMK2 plays an important role in the development and progression of cardiovascular disease (41–43), it is possible that the PPM1F/CaMK2 pathway may play a role in coronary diseases. Further study of PPM1F and CaMK2 may shed light on the mechanisms linking PTSD and depression to elevated risk for heart disease.

Using a different traumatic model than ours, previous studies have shown that exposing rats to a predator results in Amygdala upregulation but mPFC downregulation of phosphorylated *Camk2* (p*Camk2*) one week later (44). Consistently, we found significant changes in mRNA levels of *CaMK2G* in blood in human with PTSD&Dep symptoms and in the Amygdala of mice exposed to stress. Concordantly, we found that stress also regulated *Camk2g* protein in

the mouse brain. Moreover, *Ppm1f* protein level in the Amygdala is regulated by stress in male mice suggesting that IMO alters *Ppm1f* levels. Regarding directionality, the *Ppm1f* mRNA level and *Ppm1f* protein level are in the same direction in the Amygdala but in opposite direction in the mPFC. Interestingly, *Ppm1f*/*Camk2g* colocalization is regulated by stress in the mouse brain. Thus, it is possible that *PPM1F* levels may be regulating *CaMK2G* after stress, promoting the development of depression and anxiety behaviors.

We also examined whether post-stress manipulation, i.e. systemic administration of corticosterone, may decrease the stress-related behavioral and molecular phenotypes (44–46). Systemic corticosterone did not rescue the depressive-like phenotype elicited by IMO in male mice. However, corticosterone rescued the depressive-like behavior induced by IMO in female mice. EPM results showed that corticosterone rescued the anxiety-like behavior in male mice. In contrast, IMO did not induce an anxiety-like behavior in female mice. Analysis of the mRNA levels showed that corticosterone treatment shortly after stress rescued the genetic regulation of *Ppm1f* in the Amygdala and mPFC in males and in the mPFC in females. Thus, there appears to be relevant sex differences in *Ppm1f* regulation in the brain, acute exposure to traumatic stress and its treatment with corticosterone.

Our study should be interpreted in light of its limitations. First, the data obtained with IMO should be interpreted with caution. While most rodents develop anxiety and depression-like behavior after IMO, only a small percentage of the human population develops PTSD and/or depression. Second, rs17759843 is associated with blood expression of *PPM1F* in a sample of mostly European descent. rs17759843 has an MAF of 0.11 in Caucasians and 0.01 in African Americans per dbGAP HapMap populations. Whether this SNP is an eQTL in the African Americans remain to be determined, as we were likely underpowered to detect this relationship in our GTP dataset. Third, the Blood eQTL Browser provides statistics on bivariate association between rs17759843 and blood *PPM1F* expression. Hence, rs17759843 may be associated with *PPM1F* due to its linkage disequilibrium with other stronger eQTL SNPs for *PPM1F*. Fourth, we did not have access to human brain amygdala to examine association between rs17759843 and *PPM1F* expression. Fifth, we analyzed cases with significant current symptoms of PTSD&Dep but we did not have rigorous clinical assessment to determine if these cases had the diagnosis of PTSD or Major Depressive Disorder. Additionally, our cutoff score of 14 for the PSS and BDI, though based on published psychometric studies, may be lenient and thus could increase the risk of false positive. Sixth, the CHDWB replication sample uses the GAD-7, which is a good screening tool but could provide a false positive detection if not followed by an accurate clinical evaluation. Seventh, we found blood mRNA *PPM1F* level significantly down-regulated in cases with PTSD&Dep symptoms in the GTP sample and replicated this association in cases with anxiety symptoms in an independent CHDWB cohort. Our replication is only a quasi-replication since anxiety symptoms can be PTSD symptoms but they can also be symptoms of generalized anxiety disorder or social anxiety disorder. Lastly, only a subset of GTP participants with genetic data had gene expression data. However, the two datasets are comparable as reflected by the distribution of their sex, BDI, and PSS scores (Supplemental Table S8).

In conclusion, mRNA and protein levels of phosphatase Ppm1f and Camk2g are regulated in the brain after exposure to traumatic stress in male and female mouse models and are associated with chronic anxiety-related (PTSD) and depression symptoms in traumatized humans. Because of the widespread expression of PPM1F in the body and brain, these changes in expression of PPM1F by stress may possibly have other pathophysiological implications that should be examined in future studies. Insights into the role of CAMK2 and PPM1F following trauma exposure may contribute to discovering novel approaches to treat or prevent the disabling conditions of PTSD and depression.

Supplementary Material

Refer to Web version on PubMed Central for supplementary material.

Acknowledgments

We would like to thank Dr. Greg Gibson (Georgia Tech, USA) for his comments on this paper and data on Figure 3B. We are thankful to Dr. Antonio Armario and Dr. Roser Nadal for support on this work. We would also like to thank the staff and participants of the Grady Trauma Project for their contributions to this important work.

FINANCIAL DISCLOSURES

KJR received support from the Howard Hughes Medical Institute, RA and KJR were supported by R21MH101492-01, KJR by R01MH071537 and R01MH096764, and RA by a NARSAD Young Investigator Grant (22434), Ramon y Cajal RYC-2014-15784 MINECO and SAF2016-76565-R MINECO and FEDER. APW was supported by the Department of Veterans Affairs Career Development Award IK2CX000601. TJ has support from NARSAD and R01MH100122. The contents do not represent the views of the Department of Veterans Affairs or the United States Government. The UAB Animal Facility received funding from 2015 FEDER7S-20IU16-001945.

All authors report no biomedical financial interests or potential conflicts of interest.

References

1. McEwen BS, Bowles NP, Gray JD, Hill MN, Hunter RG, Karatsoreos IN, et al. Mechanisms of stress in the brain. *Nat Neurosci*. 2015; 18:1353–1363. [PubMed: 26404710]
2. Wittchen HU, Jacobi F, Rehm J, Gustavsson A, Svensson M, Jonsson B, et al. The size and burden of mental disorders and other disorders of the brain in Europe 2010. *Eur Neuropsychopharmacol*. 2011; 21:655–679. [PubMed: 21896369]
3. Tham A, Jonsson U, Andersson G, Soderlund A, Allard P, Bertilsson G. Efficacy and tolerability of antidepressants in people aged 65 years or older with major depressive disorder - A systematic review and a meta-analysis. *J Affect Disord*. 2016; 205:1–12. [PubMed: 27389296]
4. Henssler J, Kurschus M, Franklin J, Bschor T, Baethge C. Long-Term Acute-Phase Treatment With Antidepressants, 8 Weeks and Beyond: A Systematic Review and Meta-Analysis of Randomized, Placebo-Controlled Trials. *J Clin Psychiatry*. 2017
5. Caramanica K, Brackbill RM, Liao T, Stellman SD. Comorbidity of 9/11-Related PTSD and Depression in the World Trade Center Health Registry 10–11 Years Postdisaster. *J Trauma Stress*. 2014; 27:680–688. [PubMed: 25470556]
6. Matar MA, Zohar J, Cohen H. Translationally relevant modeling of PTSD in rodents. *Cell Tissue Res*. 2013; 354:127–139. [PubMed: 23912242]
7. Krishnan V, Nestler EJ. Linking molecules to mood: new insight into the biology of depression. *Am J Psychiatry*. 2010; 167:1305–1320. [PubMed: 20843874]
8. Andero R, Dias BG, Ressler KJ. A role for Tac2, NkB, and Nk3 receptor in normal and dysregulated fear memory consolidation. *Neuron*. 2014; 83:444–454. [PubMed: 24976214]

9. Sawamura T, Klengel T, Armario A, Jovanovic T, Norrholm SD, Ressler KJ, et al. Dexamethasone Treatment Leads to Enhanced Fear Extinction and Dynamic Fkbp5 Regulation in Amygdala. *Neuropsychopharmacology*. 2016; 41:832–846. [PubMed: 26174596]
10. Marquez C, Belda X, Armario A. Post-stress recovery of pituitary-adrenal hormones and glucose, but not the response during exposure to the stressor, is a marker of stress intensity in highly stressful situations. *Brain Res*. 2002; 926:181–185. [PubMed: 11814422]
11. Andero R, Heldt SA, Ye K, Liu X, Armario A, Ressler KJ. Effect of 7,8-dihydroxyflavone, a small-molecule TrkB agonist, on emotional learning. *Am J Psychiatry*. 2011; 168:163–172. [PubMed: 21123312]
12. Andero R, Brothers SP, Jovanovic T, Chen YT, Salah-Uddin H, Cameron M, et al. Amygdala-dependent fear is regulated by Oprl1 in mice and humans with PTSD. *Science translational medicine*. 2013; 5:188ra173.
13. Kilaru V, Iyer SV, Almli LM, Stevens JS, Lori A, Jovanovic T, et al. Genome-wide gene-based analysis suggests an association between Neuroligin 1 (NLGN1) and post-traumatic stress disorder. *Translational psychiatry*. 2016; 6:e820. [PubMed: 27219346]
14. Lowe SR, Quinn JW, Richards CA, Pothen J, Rundle A, Galea S, et al. Childhood trauma and neighborhood-level crime interact in predicting adult posttraumatic stress and major depression symptoms. *Child Abuse Negl*. 2016; 51:212–222. [PubMed: 26499372]
15. Gillespie CF, Bradley RG, Mercer K, Smith AK, Conneely K, Gapen M, et al. Trauma exposure and stress-related disorders in inner city primary care patients. *General Hospital Psychiatry*. 2009; 31:505–514. [PubMed: 19892208]
16. Foa EB, Riggs DS, Dancu CV, Rothbaum BO. Reliability and validity of a brief instrument for assessing post-traumatic stress disorder. *Journal of Traumatic Stress*. 1993; 6:459–473.
17. Beck A, Ward C, Mendelson M, Mock J, Erbaugh J. An inventory for measuring depression. *Archives of General Psychiatry*. 1961; 4:561–571. [PubMed: 13688369]
18. Mecham BH, Nelson PS, Storey JD. Supervised normalization of microarrays. *Bioinformatics*. 2010; 26:1308–1315. [PubMed: 20363728]
19. Tabassum R, Cunningham L, Stephens EH, Sturdivant K, Martin GS, Brigham KL, et al. A Longitudinal Study of Health Improvement in the Atlanta CHDWB Wellness Cohort. *Journal of personalized medicine*. 2014; 4:489–507. [PubMed: 25563459]
20. Spitzer RL, Kroenke K, Williams JBW, Lowe B. A Brief Measure for Assessing Generalized Anxiety Disorder: The GAD-7. *Arch Intern Med*. 2006; 166:1092–1097. [PubMed: 16717171]
21. Purcell S, Neale B, Todd-Brown K, Thomas L, Ferreira M, Bender D, et al. PLINK: a toolset for whole-genome association and population-based linkage analysis. *American Journal of Human Genetics*. 2007; 81:559–575. [PubMed: 17701901]
22. Price AL, Patterson NJ, Plenge RM, Weinblatt ME, Shadick NA, Reich D. Principal components analysis corrects for stratification in genome-wide association studies. *Nat Genet*. 2006; 38:904–909. [PubMed: 16862161]
23. Conneely KN, Boehnke M. So Many Correlated Tests, So Little Time! Rapid Adjustment of P Values for Multiple Correlated Tests. *The American Journal of Human Genetics*. 2007; 81:1158–1168. [PubMed: 17966093]
24. Westra HJ, Peters MJ, Esko T, Yaghootkar H, Schurmann C, Kettunen J, et al. Systematic identification of trans eQTLs as putative drivers of known disease associations. *Nat Genet*. 2013; 45:1238–1243. [PubMed: 24013639]
25. Colantuoni C, Lipska BK, Ye T, Hyde TM, Tao R, Leek JT, et al. Temporal dynamics and genetic control of transcription in the human prefrontal cortex. *Nature*. 2011; 478:519–523. [PubMed: 22031444]
26. Zoladz PR, Park CR, Halonen JD, Salim S, Alzoubi KH, Srivareerat M, et al. Differential expression of molecular markers of synaptic plasticity in the hippocampus, prefrontal cortex, and amygdala in response to spatial learning, predator exposure, and stress-induced amnesia. *Hippocampus*. 2012; 22:577–589. [PubMed: 21538655]
27. Strack S, Barban MA, Wadzinski BE, Colbran RJ. Differential inactivation of postsynaptic density-associated and soluble Ca²⁺/calmodulin-dependent protein kinase II by protein phosphatases 1 and 2A. *Journal of neurochemistry*. 1997; 68:2119–2128. [PubMed: 9109540]

28. Yoshimura Y, Sogawa Y, Yamauchi T. Protein phosphatase 1 is involved in the dissociation of Ca²⁺/calmodulin-dependent protein kinase II from postsynaptic densities. *FEBS letters*. 1999; 446:239–242. [PubMed: 10100849]
29. Harvey BP, Banga SS, Ozer HL. Regulation of the multifunctional Ca²⁺/calmodulin-dependent protein kinase II by the PP2C phosphatase PPM1F in fibroblasts. *The Journal of biological chemistry*. 2004; 279:24889–24898. [PubMed: 15140879]
30. Ishida A, Kameshita I, Fujisawa H. A novel protein phosphatase that dephosphorylates and regulates Ca²⁺/calmodulin-dependent protein kinase II. *J Biol Chem*. 1998; 273:1904–1910. [PubMed: 9442023]
31. Dubovsky SL, Thomas M. Serotonergic mechanisms and current and future psychiatric practice. *J Clin Psychiatry*. 1995; 56(Suppl 2):38–48.
32. Simpson MD, Lubman DI, Slater P, Deakin JF. Autoradiography with [3H]8-OH-DPAT reveals increases in 5-HT(1A) receptors in ventral prefrontal cortex in schizophrenia. *Biol Psychiatry*. 1996; 39:919–928. [PubMed: 9162203]
33. Stockmeier CA. Neurobiology of serotonin in depression and suicide. *Ann N Y Acad Sci*. 1997; 836:220–232. [PubMed: 9616801]
34. Cai X, Gu Z, Zhong P, Ren Y, Yan Z. Serotonin 5-HT_{1A} receptors regulate AMPA receptor channels through inhibiting Ca²⁺/calmodulin-dependent kinase II in prefrontal cortical pyramidal neurons. *The Journal of biological chemistry*. 2002; 277:36553–36562. [PubMed: 12149253]
35. Jackson KJ, Damaj MI. L-type calcium channels and calcium/calmodulin-dependent kinase II differentially mediate behaviors associated with nicotine withdrawal in mice. *J Pharmacol Exp Ther*. 2009; 330:152–161. [PubMed: 19336664]
36. Li K, Zhou T, Liao L, Yang Z, Wong C, Henn F, et al. betaCaMKII in lateral habenula mediates core symptoms of depression. *Science*. 2013; 341:1016–1020. [PubMed: 23990563]
37. Choi K, Le T, Xing G, Johnson LR, Ursano RJ. Analysis of kinase gene expression in the frontal cortex of suicide victims: implications of fear and stress. *Front Behav Neurosci*. 2011; 5:46. [PubMed: 21847376]
38. Kubzansky LD, Koenen KC, Jones C, Eaton WW. A prospective study of posttraumatic stress disorder symptoms and coronary heart disease in women. *Health Psychol*. 2009; 28:125–130. [PubMed: 19210026]
39. Kubzansky LD, Koenen KC, Spiro A 3rd, Vokonas PS, Sparrow D. Prospective study of posttraumatic stress disorder symptoms and coronary heart disease in the Normative Aging Study. *Arch Gen Psychiatry*. 2007; 64:109–116. [PubMed: 17199060]
40. Whang W, Kubzansky LD, Kawachi I, Rexrode KM, Kroenke CH, Glynn RJ, et al. Depression and risk of sudden cardiac death and coronary heart disease in women: results from the Nurses' Health Study. *J Am Coll Cardiol*. 2009; 53:950–958. [PubMed: 19281925]
41. Pellicena P, Schulman H. CaMKII inhibitors: from research tools to therapeutic agents. *Front Pharmacol*. 2014; 5:21. [PubMed: 24600394]
42. Mollova MY, Katus HA, Backs J. Regulation of CaMKII signaling in cardiovascular disease. *Front Pharmacol*. 2015; 6:178. [PubMed: 26379551]
43. Mattiazzi A, Bassani RA, Escobar AL, Palomeque J, Valverde CA, Vila Petroff M, et al. Chasing cardiac physiology and pathology down the CaMKII cascade. *Am J Physiol Heart Circ Physiol*. 2015; 308:H1177–1191. [PubMed: 25747749]
44. Cohen H, Kozlovsky N, Matar MA, Zohar J, Kaplan Z. Distinctive hippocampal and amygdalar cytoarchitectural changes underlie specific patterns of behavioral disruption following stress exposure in an animal model of PTSD. *European neuropsychopharmacology : the journal of the European College of Neuropsychopharmacology*. 2014; 24:1925–1944. [PubMed: 25451698]
45. Rao RP, Anilkumar S, McEwen BS, Chattarji S. Glucocorticoids protect against the delayed behavioral and cellular effects of acute stress on the amygdala. *Biol Psychiatry*. 2012; 72:466–475. [PubMed: 22572034]
46. Zohar J, Yahalom H, Kozlovsky N, Cwikel-Hamzany S, Matar MA, Kaplan Z, et al. High dose hydrocortisone immediately after trauma may alter the trajectory of PTSD: interplay between clinical and animal studies. *European neuropsychopharmacology : the journal of the European College of Neuropsychopharmacology*. 2011; 21:796–809. [PubMed: 21741804]

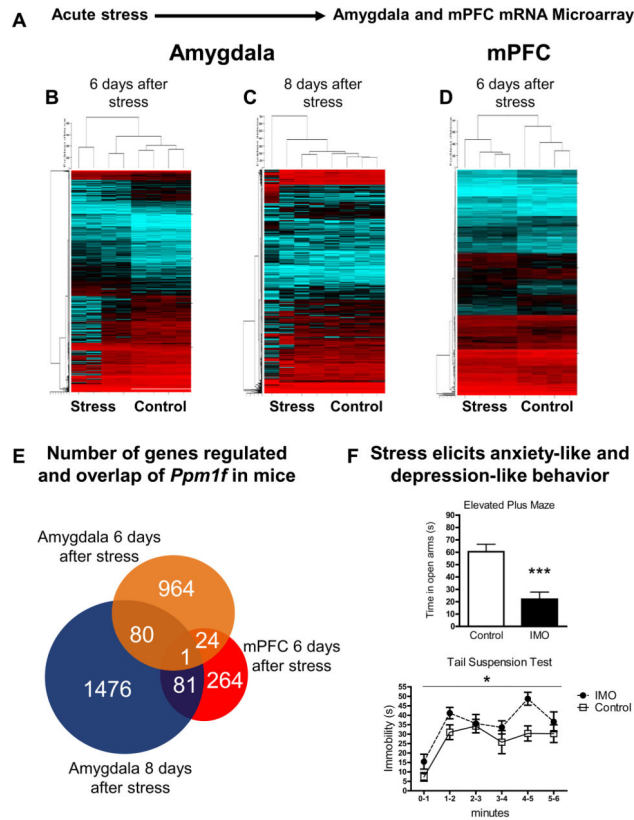
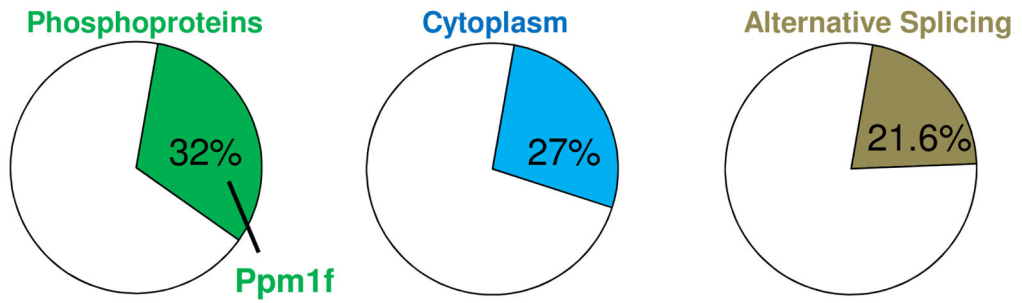


Figure 1. *Ppm1f* brain regulation after stress, anxiety-like and depression-like behaviors
(A) Schematic of the experimental protocol (N=4 per group). **(B)** Amygdala microarray 6 days after acute immobilization stress (IMO). **(C)** Amygdala microarray 8 days after IMO stress. **(D)** mPFC microarray 6 days after IMO stress. **(E)** Gene regulation of the microarrays show overlap in the *Ppm1f* gene. **(F)** Top, 6 days after stress mice spend less time in the open arms in the elevated plus maze indicating enhanced anxiety-like behavior (p=0.0004, n=8 per group). Below, 6 days after stress mice present enhanced levels of immobility in the tail suspension test indicating enhanced depressive-like behavior (p=0.0361, n=8 per group).

A) Functions altered in the amygdala and mPFC after stress



B) Detailed altered functions in the amygdala and mPFC after stress

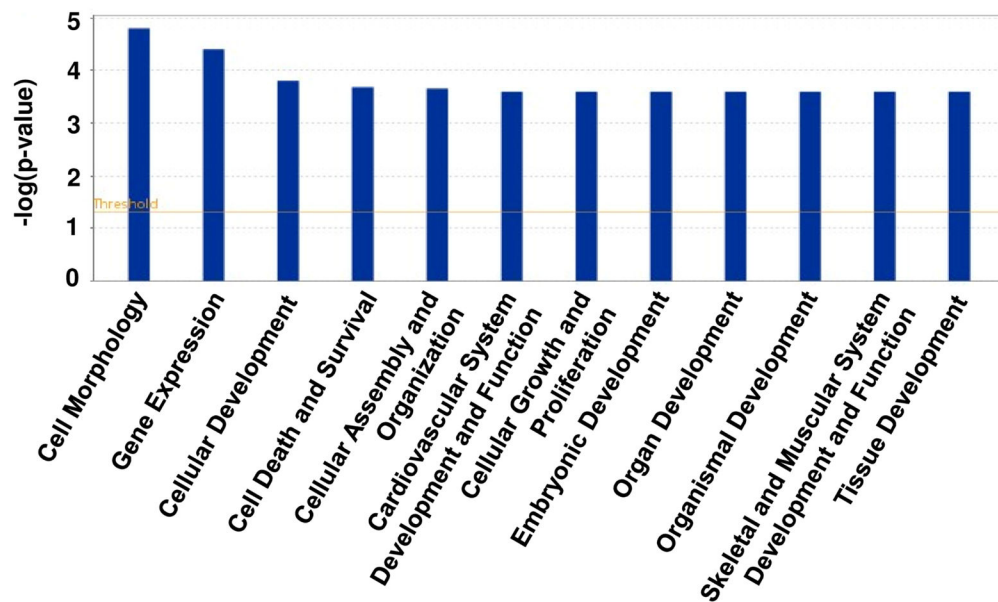


Figure 2. Bioinformatics analysis of the altered functions in the Amygdala and mPFC after exposure to stress in mice

(A) Analysis with DAVID 6.8 revealed general altered functions 6 to 8 days after acute stress in both Amygdala and mPFC. Phosphoproteins (including *Ppm1f*), Cytoplasm and Alternative Splicing were the more affected functions in these analysis. (B) IPA analysis showed more detailed functions altered after a single exposure to 2 hours stress immobilization.

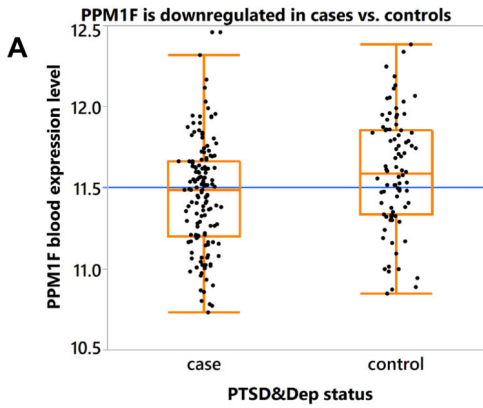
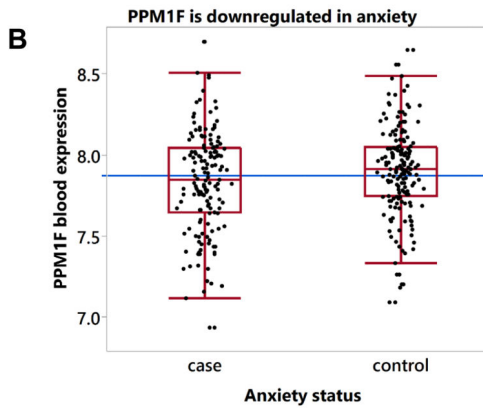
PPM1F blood mRNA levels in PTSD&Depression**PPM1F blood mRNA levels in Anxiety**

Figure 3. PPM1F blood mRNA levels in PTSD&Depression and in Anxiety

(A) Box plot showing that *PPM1F* mRNA level is lower in cases with symptoms of PTSD&Depression versus controls after adjusting for gender, age, and population substructure ($p=0.005$, $n=230$). The black dots represent the *PPM1F* expression level of each sample. The blue horizontal line represents the mean of *PPM1F* level in the overall sample; (B) *PPM1F* mRNA level is significantly down-regulated in anxiety vs. controls after adjusting for gender, age, and ethnicity ($p=0.044$, $n=316$).

A SNP within *PPM1F* is associated with PTSD&Depression

rs17759843 (number of its minor allele in additive genetic model) vs PTSD&Depression

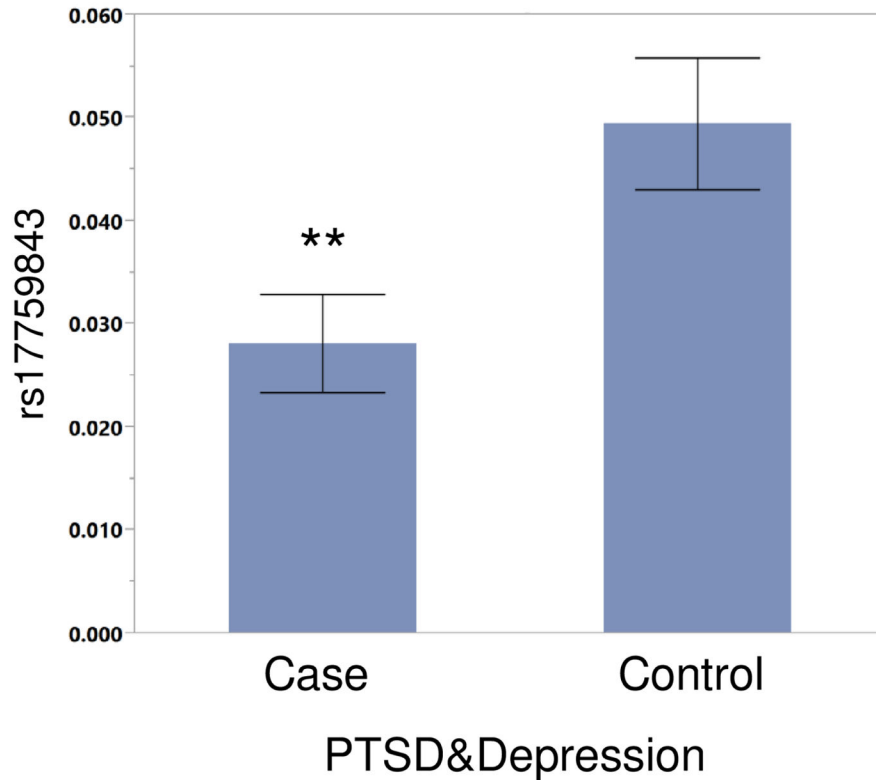


Figure 4. A SNP within the *PPM1F* gene is associated with PTSD&Depression

The minor allele of rs17759843, a *PPM1F* 3' UTR SNP, is significantly associated with lower odds for PTSD & Depression after adjusting for gender and population substructure (OR=0.53; $p=0.005$; permuted $p=0.046$; $n=2361$). Each error bar is constructed using 1 standard error from the mean.

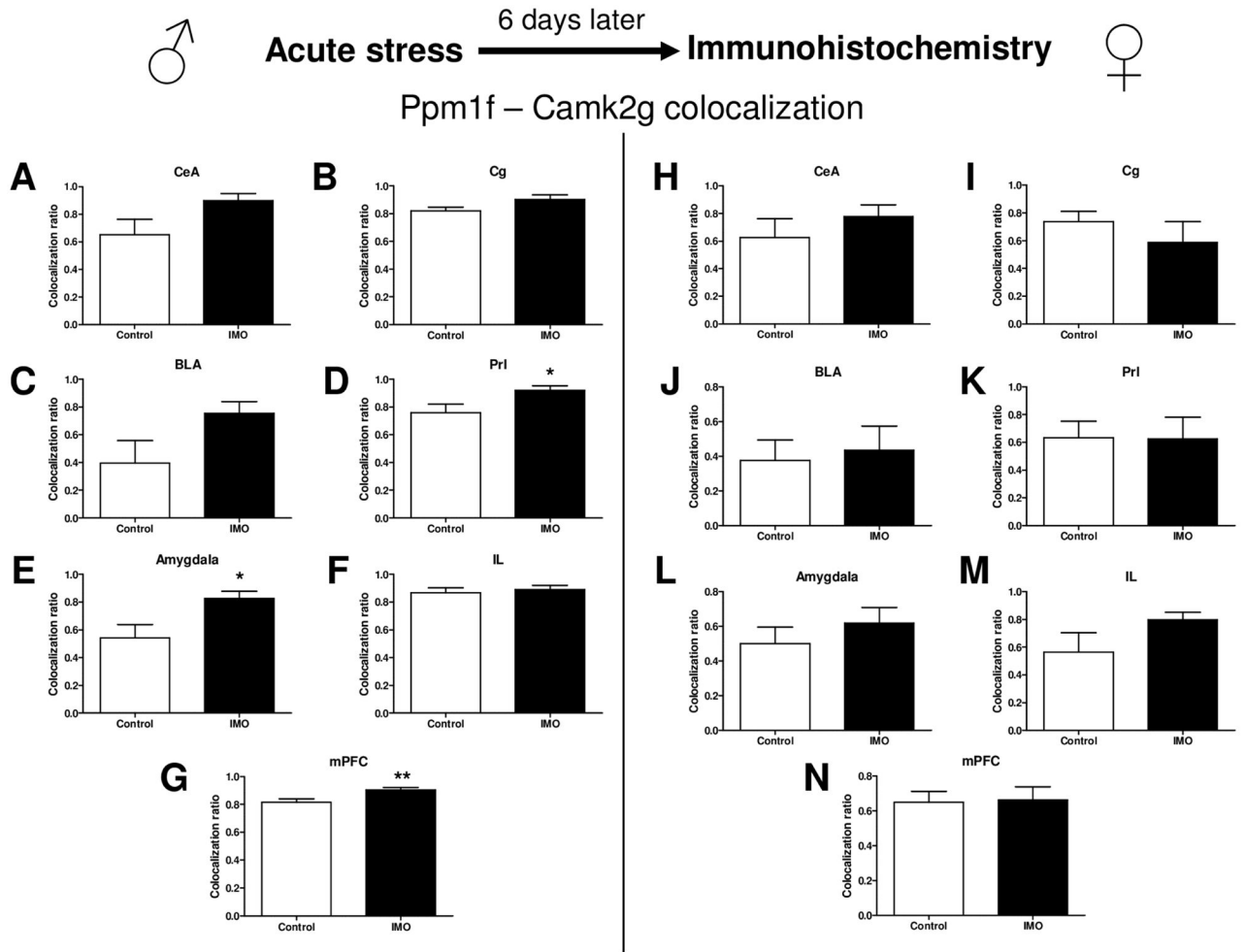


Figure 5. Stress immobilization and Ppm1f/Camk2g levels in the Amygdala and mPFC in both male and female mice: an immunohistochemistry study

Quantification of Ppm1f and Camk2g levels reveals that both are more densely colocalized after traumatic stress in male mice in the Amygdala and mPFC. (A,H) CeA = Central amygdala, (B,I) Cg = Cingulate cortex, (C,J) BLA = Basolateral amygdala, (D,K) PrI = Prelimbic cortex, (E,L) (Total) Amygdala = CeA + BLA, (F,M) IL = Infralimbic cortex, (G,N) mPFC = Medial prefrontal cortex = Cg+PrI+IL. *p 0.05, **p 0.01. N=2 per group.

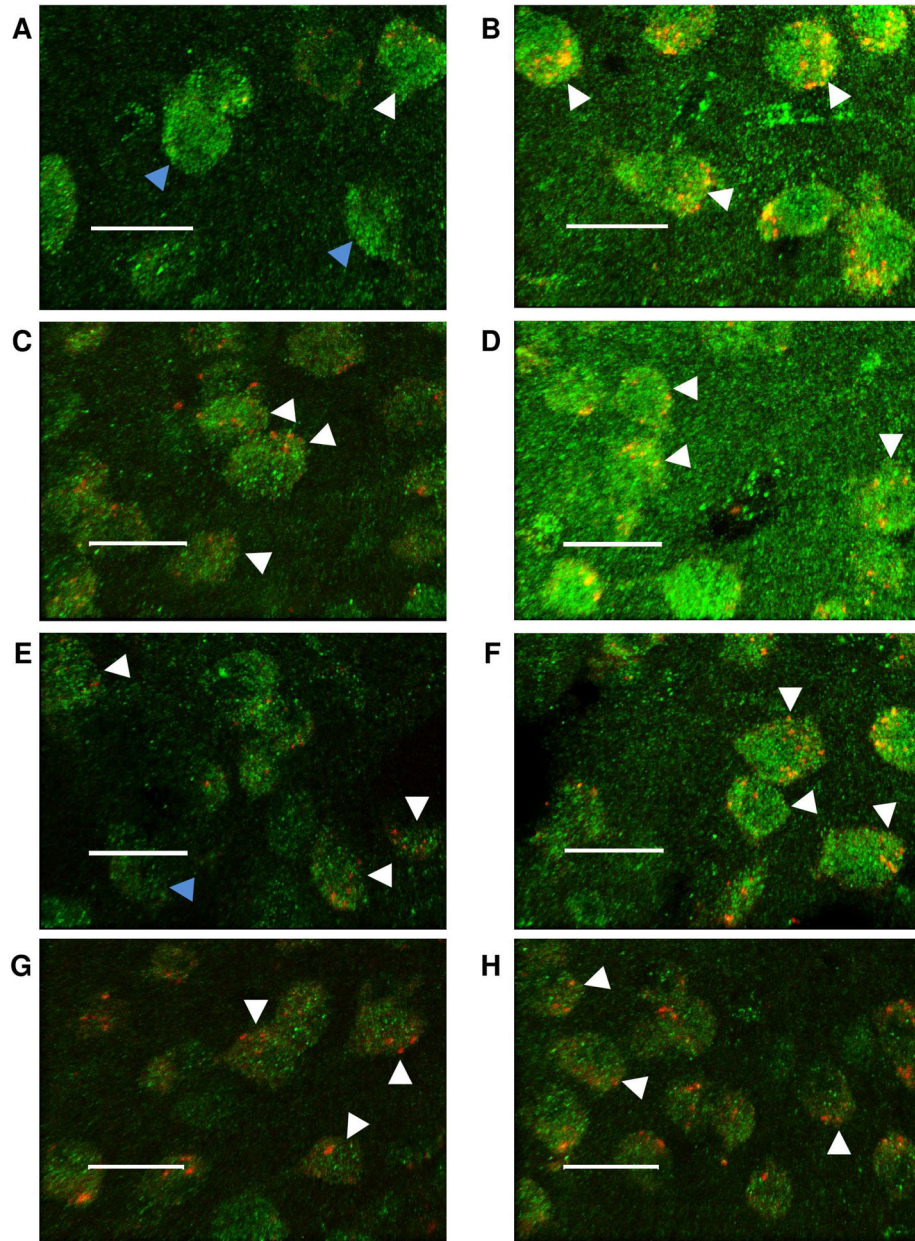


Figure 6. Representative images of the immunohistochemistry study evaluating the colocalization of Ppm1f (green) and Camk2g (red) in the Amygdala and mPFC

Scale bars = 20µm. (A) Male Basolateral amygdala, group control. (B) Male Basolateral amygdala, group IMO. (C) Male Prelimbic cortex (PrL), group control. (D) Male PrL, group IMO. (E) Female Basolateral amygdala, group control. (F) Female Basolateral amygdala, group IMO. (G) Female Prelimbic cortex (PrL), group control. (H) Female PrL, group IMO. Blue arrow indicates no colocalization. White arrow indicates colocalization.

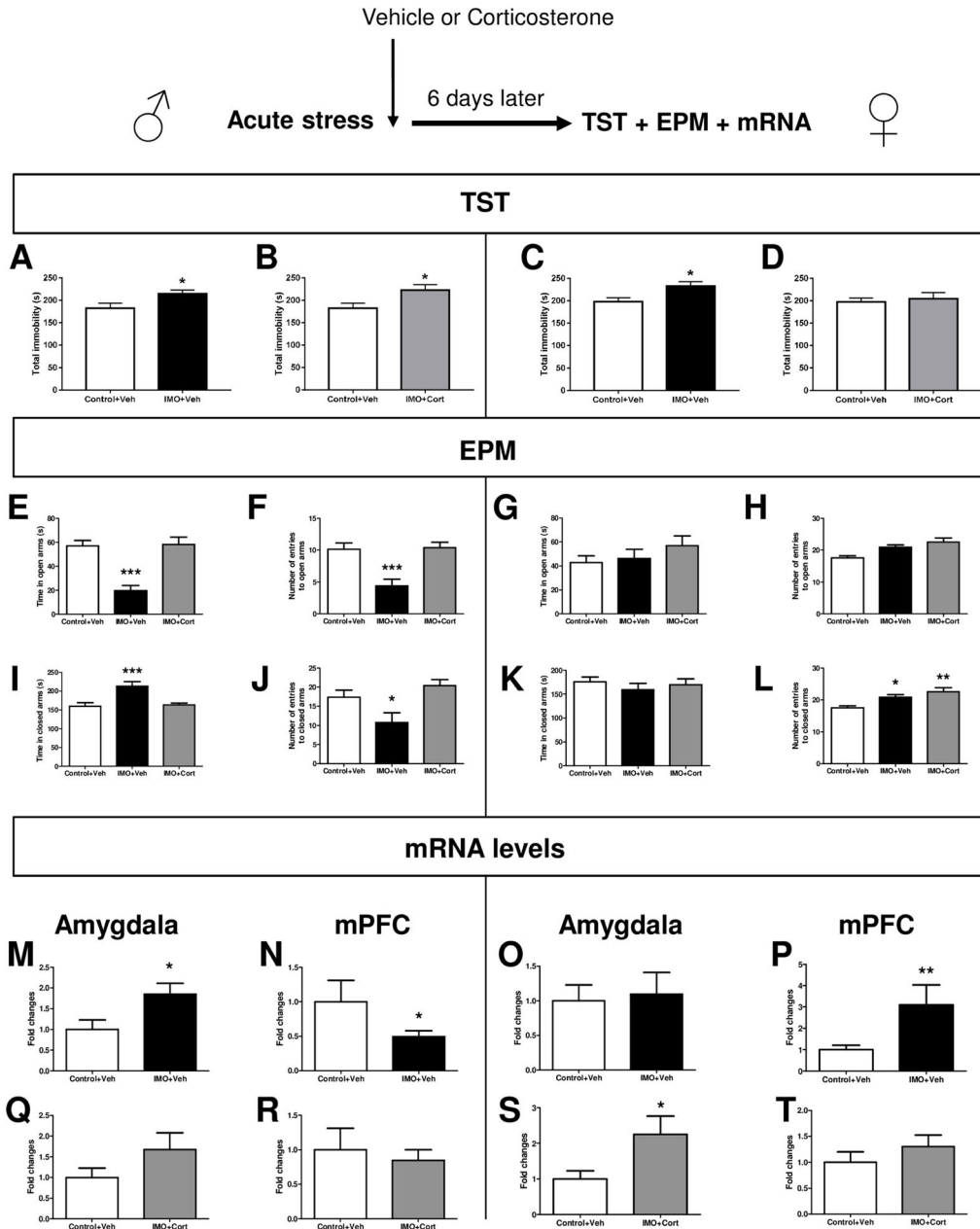


Figure 7. *Ppm1f* and corticosterone in anxiety-like behavior and depressive-like behavior in both male and female mice

N=5–8 per group. Systemic corticosterone given 1 hour after stress did not rescue the depressive-like phenotype elicited by IMO in male mice (**A, B**). However, Corticosterone rescued the depressive-like behavior induced by IMO in female mice (**C, D**) **p* 0.05). EPM results showed that corticosterone rescued the anxiety-like behavior in male mice (**E, F, I, J**, **p* 0.05, ***p* 0.01, ****p* 0.001 vs the other groups). In contrast, IMO did not induce an anxiety-like behavior in female mice (**G, H, K**). The number of entries in closed arms was increased in the IMO+Veh vs Control+Veh group (**L**, **p* 0.05, ****p* 0.001 vs Control +Veh). Analysis of the mRNA levels in males showed that the IMO+Veh group presented

enhanced levels of ppm1f compared to Control group ($p=0.0331$, **M**) in the Amygdala and decreased levels in the mPFC ($p=0.0371$, **N**). Corticosterone rescued the ppm1f gene changes induced by IMO in the Amygdala (**Q**) and mPFC (**R**). The mRNA levels in females were upregulated in mPFC in the group IMO+Veh vs Control+Veh (**P**) and also in the group IMO+Cort vs Control+Veh in the Amygdala (**S**). Corticosterone rescued the ppm1f gene changes in the mPFC (**T**).

Author Manuscript

Author Manuscript

Author Manuscript

Author Manuscript