



^aTherapeutics Research Centre, The University of Queensland Diamantina Institute, ^cMater Research Institute, The University of Queensland, Translational Research Institute, Brisbane, Australia; ^bSchool of Biomedical Sciences, The University of Queensland, Brisbane, Australia; ^fInstitute of Health and Biomedical Innovation, Queensland University of Technology, Translational Research Institute, Brisbane, Australia; ^dSchool of Clinical Medicine, The University of Queensland, Gallipoli Medical Research Institute, Greenslopes Private Hospital, Brisbane, Australia; ^eAustralian National Centre for the Public Awareness of Science, Australian National University, Canberra, Australia; ^gSchool of Pharmacy and Medical Sciences, University of South Australia, Basil Hetzel Institute, Adelaide, Australia; ^hDepartment of Biliary-Pancreatic Surgery, Ren Ji Hospital, School of Medicine, Shanghai Jiao Tong University, Shanghai, People's Republic of China

Correspondence: Michael S. Roberts, Ph.D., The University of Queensland Diamantina Institute, The University of Queensland, Translational Research Institute, Queensland 4103, Australia. Telephone: 61-07-3443-8033; e-mail: m.roberts@uq.edu.au; or Haolu Wang, M.D., Ph.D., The University of Queensland Diamantina Institute, The University of Queensland, Translational Research Institute, Queensland 4103, Australia. Telephone: 61-07-3443-7488; e-mail: h.wang21@uq.edu.au

Received August 29, 2017; accepted for publication November 2, 2017; first published December 6, 2017.

<http://dx.doi.org/10.1002/sctm.17-0209>

This is an open access article under the terms of the Creative Commons Attribution-NonCommercial-NoDerivs License, which permits use and distribution in any medium, provided the original work is properly cited, the use is non-commercial and no modifications or adaptations are made.

Concise Review: Quantitative Detection and Modeling the In Vivo Kinetics of Therapeutic Mesenchymal Stem/Stromal Cells

ANASTASIA BROOKS,^{a,b} KATHRYN FUTREGA,^c XIAOWEN LIANG,^a XIAOLING HU,^a XIN LIU,^a DARRELL H. G. CRAWFORD,^d MICHAEL R. DORAN,^{c,e,f} MICHAEL S. ROBERTS,^{a,g} HAOLU WANG^h

Key Words. Stem cells • Quantitative detection • Modeling • Kinetics

ABSTRACT

Mesenchymal stem/stromal cells (MSCs) present a promising tool in cell-based therapy for treatment of various diseases. Currently, optimization of treatment protocols in clinical studies is complicated by the variations in cell dosing, diverse methods used to deliver MSCs, and the variety of methods used for tracking MSCs in vivo. Most studies use a dose escalation approach, and attempt to correlate efficacy with total cell dose. Optimization could be accelerated through specific understanding of MSC distribution in vivo, long-term viability, as well as their biological fate. While it is not possible to quantitatively detect MSCs in most targeted organs over long time periods after systemic administration in clinical trials, it is increasingly possible to apply pharmacokinetic modeling to predict their distribution and persistence. This Review outlines current understanding of the in vivo kinetics of exogenously administered MSCs, provides a critical analysis of the methods used for quantitative MSC detection in these studies, and discusses the application of pharmacokinetic modeling to these data. Finally, we provide insights on and perspectives for future development of effective therapeutic strategies using pharmacokinetic modeling to maximize MSC therapy and minimize potential side effects. *STEM CELLS TRANSLATIONAL MEDICINE* 2018;7:78–86

SIGNIFICANCE STATEMENT

The establishment of optimal dosage and route of administration of mesenchymal stem/stromal cells (MSCs) requires the ability to quantitatively determine their in vivo distribution, long-term viability as well as their biological fate. In this Concise Review, studies elucidating the in vivo kinetics of MSCs are summarized. This article highlights the use of modeling approaches for precise characterization and prediction for future development of efficacious MSC-based therapies.

INTRODUCTION

While advancements in pharmaceuticals have significantly improved the quality of life and lifespans of millions, there remain a number of pathologies that are challenging to treat with drugs alone. Cell-based therapies have emerged as the next generation major approach to treat a range of complex pathologies. The first clinical trial using mesenchymal stem/stromal cells (MSCs) was described in 1999, and it focused on the treatment of osteogenesis imperfecta, a rare skeletal condition [1]. Since then, efforts have boomed to exploit MSCs as emerging therapeutics to regenerate damaged tissue and treatment of pathologies such as cardiovascular disease, liver cirrhosis, brain spinal cord injury, cartilage and bone injury, Crohn's disease, neurodegenerative disease, ischemic disease, and graft-versus-host disease [2]. In 2015, there were 493 registered MSC clinical trials, and 2 years later in 2017 this number

has increased to 743 [3]. Currently, MSCs are being exploited for both their unique multilineage differentiation potential and immunomodulatory properties, which enable a range of potential applications. While increasingly mainstream, MSCs are being viewed from a traditional cell-therapy perspective. We contend that the field would benefit from viewing MSCs as a pharmaceutical, and taking advantage of well-established pharmaceutical approaches to modeling and predicting efficacy [4].

The therapeutic mode of action of transplanted MSCs may be different for each condition, with MSCs either directly contributing to new tissue formation through terminal differentiation, or modulation of endogenous repair processes and/or of inflammatory responses via paracrine signaling [5]. Based on the assumed mode of action, the 743 registered trials declared in 2017 will use a range of total number of MSCs and involve

Table 1. Comparison of methods used for quantitative mesenchymal stem/stromal cells (MSC) detection

Technique	Detection	Detection limit (cells)	Advantages	Disadvantages	Reference
PCR/histology	MSC specific DNA sequences or antigens	10 ²	High sensitivity, no need to label the cells	Need animal sacrifice, biopsy, or postmortem samples from patients	[12, 13]
Flow cytometry	Fluorescent dyes/proteins	10 ³	High specificity, quantification of live cells	Preclinical study only	[14]
Optical imaging	Fluorescent dyes/proteins	10 ³	High throughput, excellent for longitudinal studies	Small animals only, low resolution, low sensitivity	[8]
MRI	Contrast agents	10 ⁴	High spatial resolution, whole-body scanning, clinically useful, excellent for longitudinal studies	Quantification can be difficult, cytotoxicity of certain labeling agents	[15]
Radionuclear	Radioisotope labels	10 ⁴	Quantification feasible using SPECT, whole-body scanning; high sensitivity,	Limited spatial resolution; ionizing radiation	[16]

Abbreviations: MRI, magnetic resonance imaging; PCR, polymerase chain reaction.

different local or systemic delivery strategies. Accumulated data generated from these clinical trials, and experimental animal models, could be used to inform pharmacokinetic models. If robust models were generated, they could form the foundation for future predictions of efficacy, accelerating clinical research outcomes by reducing the number of conditions required in dose escalation studies and informing how to best deliver the cells. Such model development is normally regarded as a critical step in the development of any new therapeutic agent to establish the optimal dosage, route of administration, duration of treatment and targeting strategies to achieve the maximum effectiveness with lowest risk [6]. MSC pharmacokinetic modeling would require data for MSC survival *in vivo*, percentage of cells that actually home to the diseased/damaged tissue, relative cytokine secretion and treatment outcome. It is possible and important to collect this data using effective MSC detecting and tracking technology for both the development of models and for the elucidation of biological mechanisms that underpin efficacy. MSC homing, distribution, and detection methods have been discussed in several review articles. These previous publications described specific aspects of MSC transplantation including tumor-homing [7], cell-tracking methods [8], study of dosing regimens [9], and general description of MSC biodistribution [10, 11]. Similarly, there are an increasing number of articles describing techniques to quantify MSC in tissues, but few provide actual detailed descriptions of MSC being tracked using these methods, and importantly their limitations. In this Review, we pull these pieces together, critically assess technologies, and describe how they could be used to contribute to the development of pharmacokinetic modeling of MSC-based therapies.

METHODS FOR QUANTITATIVE MSC DETECTION

A critical step in generating MSC pharmacokinetic models is tracking the fate of cells following transplantation. An ideal quantification technique should have the following features: high sensitivity and specificity; long-term detection and monitoring; and high spatial-temporal resolution. The advantages and disadvantages of

current available methods for quantitative MSC detection are summarized in Table 1. Without previous labeling, administered MSC numbers in tissue can be estimated using polymerase chain reaction (PCR) to amplify MSC-specific DNA sequences (assuming that the MSC are labeled or allogeneic, providing a different DNA sequence than host cells) [12] or by labeling with MSC-specific antigens in tissue biopsies on histology slices [13]. Because of high repetition and species specificity, human Alu sequences are an endogenous marker of choice to detect administered human MSCs in animal organs in preclinical studies [5, 17]. The assay of other sequences had similar sensitivity as the Alu assay but required additional manipulation of samples [5]. The lower detection limit of quantitative PCR enabled detection of 100 MSCs per gram of organ tissue [5, 18], which makes it feasible to detect MSCs in patients using biopsies [12]. Measuring HLA alleles and expression of SH3 in biopsies or postmortem samples has also been successfully used in clinical trials for detection of transplanted MSCs in tissues [13].

Both flow cytometry and optical imaging require labeling MSCs with fluorescent dyes/proteins. Flow cytometry enables estimation of the number of live MSCs per weight unit of tissue [14], but this requires that it be possible to harvest a portion of tissue for analysis. Flow cytometry is feasible in animal studies, but may not be feasible in clinical settings. Optical imaging uses a variety of dyes, such as 4',6-diamidino-2-phenylindole (DAPI) and bromodeoxyuridine, that can bind reversibly or irreversibly to the MSCs, and some studies suggest that these fluorescent dyes have no impact on cell morphology or function [18]. However, DNA binding dyes are generally regarded as carcinogens [19] and, although their use in animal models is feasible, their use in humans would likely not be considered acceptable.

MSCs transduced with a fluorescent or luciferase reporter gene using lentiviral or retroviral vectors have been used extensively for tracking MSC *in vivo* within animal models [20]. Quantification of luciferase labeled MSCs is less accurate than flow cytometry due to limitations in the quality of data that can be collected using live animal *in vivo* imaging. However, this approach does enable rapid and full body characterization that is not

possible with flow cytometry. Luciferase and/or fluorescent cell labeling each have weaknesses, but in combination they can provide high-resolution spatial and quantitative data. To date, luciferase and/or fluorescent cell labeling has only been used in preclinical studies. It is not likely that these methods will be extended to clinical quantification of MSC biodistribution in the near-term due to risk aversion to genetic modification, with the only benefit being visual tracking of the transplanted cell population. Specifically, there is concern that viral vector-mediated transduction of MSCs to produce fluorescence or bioluminescence may cause immunogenicity and/or insertional mutagenesis [21]. We note that there is an increasing enthusiasm for gene therapy approaches, and many such approaches are increasingly regarded as safe [22, 23]. A growing track record of safety in this space may influence the viability of genetic labeling approaches in the future.

In animal models, luciferase and/or fluorescent cell labeling has merit and is increasingly used. Even when cells are labeled, analysis can present challenges. Tissue harvest can be invasive, and once tissue is harvested, flow cytometry analysis or histology is required to quantify cell number. While tedious, this is often necessary as the quality of whole animal imaging can be limited by quality of signal that can be derived from cells that are deeper in the tissue or farther from the surface of the animal. Extrapolation of studies to humans would require amplification as many MSC-targeted tissues and organs in humans are located much deeper than in the small animal models used in preclinical studies. Fluorescent dyes or even bioluminescence would not likely enable effective cell tracking in many human tissue repair applications.

In clinical settings, noninvasive methods for MSC tracking and quantification are required to better understand the cell viability, biodistribution, differentiation, and long-term fate following engraftment, and thus optimizing MSC-based therapies. Magnetic resonance imaging (MRI), positron emission tomography (PET), and single-photon emission computed tomography (SPECT) are currently used modalities to image, track and quantify MSCs in patients [16]. MRI has the advantages of a safe profile and 3-dimensional capacity. Contrast agents bind to or are internalized by target MSCs *ex vivo* or *in vivo*, and high spatial resolution makes it ideal for tracking MSCs and their homing to organs [15]. However, an important limitation of MRI is that it can be challenging to distinguish contrast agent-labeled cells from free contrast agent or dead cells [8]. Transfer of contrast agent from originally labeled MSCs to macrophages can also lead to false interpretation of MRI data, which imposes an additional challenge for *in vivo* tracking of therapeutic MSCs using MRI [7]. Recently, a number of caspase-3/7 targeted imaging probes have been developed to differentiate live and apoptotic MSCs *in vivo* with high specificity [24–26]. Thus, it is conceivable that future agents will use such biomarkers for quantitative detection of MSCs. PET has the advantage of the higher sensitivity than SPECT and MRI, which allows more accurate quantification of cell number. PET is already capable of detecting administered MSCs over long time periods and of assessing their viability without the challenges of differentiating endogenous iron from labeled cells that confound MRI studies. However, PET suffers from limited spatial resolution, and leakage of radioisotopes from labeled MSCs. The labeling agents are excreted through renal and hepatobiliary pathways, creating the illusion that MSCs have homed to these tissues when in fact they might not have. This artifact can confound studies involving tracking of MSC to tissues of the liver, bladder, and intestine in patients [27]. Since each imaging modality has its own strengths

and limitations, novel contrast agents for sole imaging modality have been developed [28, 29], and multimodal imaging is expected to achieve more accurate information of the transplanted MSCs. For example, MRI and PET are two highly complementary methods for quantitative MSC detection *in vivo*, and the contrast agents for cell tracking with MRI-PET have been developed to use MRI to localize and PET to measure the MSC number, viability, and other functional parameters following administration [30]. Recently, a MRI/SPECT/fluorescent tri-modal probe was synthesized and used to label MSCs preclinically [31]. Multimodal imaging will provide a powerful approach for combined imaging of MSC distribution, target delivery, viability, and therapeutic efficacy in humans in the future.

IN VIVO KINETICS OF SYSTEMICALLY APPLIED MSCS

Akin to the use of pharmacokinetics for drug development, the overall goal of quantitative MSC detection is to elucidate their *in vivo* kinetics for enhancing therapeutic efficacy and to decrease toxicity. In some early qualitative studies, engraftment of MSCs was found to be saturated after increasing the dose of intravenous injected cells, suggesting that increasing cell dose may not improve outcomes [32, 33]. This is an important consideration, not only from a risk mitigation perspective, but from a cost management perspective. If a lower cell dose can achieve the same outcomes, then this understanding may increase the economic feasibility of the therapy. These studies also suggested that transplanted MSCs exhibited limited proliferation and self-renewal capacity following engraftment [32, 34]. The kinetics of MSCs have been found to be significantly different between cell sources, disease models, methods used to derive MSCs, and delivery routes. Bone marrow-derived MSCs are the most frequently investigated cell type and often designated as the gold standard, while MSCs originating from adipose tissue, peripheral blood, the lung, or the heart are also widely used in preclinical and clinical trials [35]. However, MSCs from different tissues are not equivalent in phenotype, function, and biodistribution [36]. For example, less amniotic fluid derived MSCs migrated into cryoinjured hearts than that of bone marrow derived MSCs in the short term (24 hours), but the long-term (30 days) cell survival rates were similar between the two types of MSCs [37]. Prolonged time in culture expansion can also induce a defect in MSCs that affects their engraftment into target organs [38]. Various administration routes have been proposed for MSC transplantation ranging from classic intravenous infusion or subcutaneous injection to intra-arterial, intra-articular, intra-portal, and intraperitoneal injections [11]. Intravenous injection is still the main administration route in preclinical and clinical settings [39]. Most of intravenously injected MSCs (>80%) are rapidly trapped in lungs, followed by rapid distribution of a portion of the injected MSCs to other tissues including liver, spleen, and inflammatory or injured sites. The accumulation of MSCs in the lungs is a key determining factor for their biodistribution, and the time duration of MSCs remaining in lungs is reported to vary from 7 days to 3 months depending on different detection methods and models applied [11]. Using a different MSC delivery route has important effects on their distribution. Intra-arterial injection provides direct delivery of MSCs to the target organs, as it bypasses the lung entrapment [17]. Several studies revealed that the intra-arterial injection could significantly decrease the number of MSCs that become trapped within the lungs and

Table 2. Summary of regenerative cell in vivo distribution in clinical studies

First Author/Year	Disease	Cell type	Cell dose	% stem cells	Delivery method	Quantification modality	In vivo distribution
Gholamrezaezhad/2011 [41]	Liver cirrhosis	MSC	$2.5-4 \times 10^8$	>90	Intravenous infusion	Planar whole-body acquisitions/SPECT	MSCs accumulated in the lung first, MSCs in the liver increased from 0.0%–2.8% to 13.0%–17.4% in 10 days
Ringden/2006 [12]	Graft-versus-host disease	MSC	$0.7-9 \times 10^6/\text{kg}$	>90	Intravenous infusion	PCR	MSC DNA was detected in lymph nodes and the gastrointestinal tract, but not in liver, spleen, and lung on day 96
Koc/2000 [13]	Breast cancer	MSC	$1-2.2 \times 10^6$	>95	Intravenous injection	Histology	Circulating MSC detection rates were 43% at 15 minutes, and 14% at 1 hour
Kurpisz/2007 [44]	Acute myocardial infarction	Bone marrow stem cell	$2-4 \times 10^6$	—	Intracoronary injection	SPECT	10% of the cells were retained within the myocardium in 24 hours after infusion while their majority migrated to the spleen and liver
Hofmann/2005 [45]	Acute myocardial infarction	Bone marrow cell	2.5×10^9	0.5	Intracoronary or intravenous injection	PET	1.3%–2.6% of Bone marrow cells and 14%–39% of bone marrow stem cells were detected in the infarcted myocardium 60 minutes after intracoronary injection, the remaining cells were found primarily in liver and spleen, after intravenous transfer, no cell was detected in the infarcted myocardium
		Bone marrow stem cell	1.7×10^9	66.6			
Kang/2006 [46]	Chronic myocardial infarction	Peripheral blood stem cell	4.5×10^8	8.3	Intracoronary or intravenous injection	PET/CT	1.5% of cells accumulated at the infarcted myocardium at 2 hours after intracoronary injection, intravenous injection showed a high initial lung uptake with no myocardial activity
Caveliers/2007 [47]	Chronic ischemic cardiomyopathy	Peripheral blood stem cell	3.4×10^7	89	Intracoronary injection	Planar whole-body acquisitions/SPECT	6.9%, 23.1%, and 3.1% of cells were in the heart, liver, and spleen in 1 hour after injection, and 2.3%, 23.8%, and 3.5% after 12 hours
Schächinger/2008 [48]	Acute myocardial infarction	Peripheral blood progenitor cell	1.5×10^7	—	Intracoronary injection	Planar whole-body acquisitions/SPECT	6.9% of cells were detected in the heart and declined to 2% after 3 to 4 days
Goussetis/2006 [27]	Chronic ischemic cardiomyopathy	Bone marrow progenitor cell	1.6×10^7	74–92	Intracoronary injection	Planar whole-body acquisitions/SPECT	9.2% and 6.8% of cells were localized in the infarcted area of the heart in 1 and 24 hours after injection, the remaining was distributed mainly to liver and spleen
Couto/2010 [49]	Liver cirrhosis	BMMC	$2-15 \times 10^6$	0.014	Hepatic arterial infusion	Planar whole-body acquisitions	Hepatic BMMC retentions of 41 and 32% in 3 and 24 hours after injection

Table 2. Continued

First Author/Year	Disease	Cell type	Cell dose	% stem cells	Delivery method	Quantification modality	In vivo distribution
Correa/2007 [50]	Acute ischemic stroke	BMMC	3×10^7	—	Cerebral arterial infusion	SPECT	BMMCs accumulated in the ipsilateral hemisphere, there was liver and spleen uptake, but no lung uptake 8 hours after infusion
Karpov/2005 [51]	Acute myocardial infarction	BMMC	$2-4 \times 10^6$	—	Intracoronary injection	SPECT	BMMC in the myocardium were 7.8%, 6.8%, and 3.2% at 30 minutes, 2.5 hours, and 24 hours after injection, there was liver and spleen uptake
Barbosa da Fonseca/2011 [52]	Chronic chagasic cardiomyopathy	BMMC	$1-9.6 \times 10^8$	1.6	Intracoronary injection	Planar whole-body acquisitions/SPECT	5.4%, 4.3%, and 2.3% of BMMCs in the heart after 1, 3, and 24 hours, The remaining cells was distributed to the liver, spleen, kidneys, and bladder. Intestinal uptake was observed after 24 hours
Barbosa da Fonseca/2009 [53]	Chronic ischemic stroke	BMMC	$1.25-5 \times 10^6$	1.6	Cerebral arterial infusion	Planar whole-body acquisitions/SPECT	1.68% of cells were in the brain at 2 hours, while 43.56% distributed to liver, 7.20% to lungs, 3.98 to spleen, 4.35% to kidneys, and 9.01% to bladder, BMMCs were distributed mainly to the liver and spleen at 24 hours after injection
Penicka/2007 [54]	Acute and chronic myocardial infarction	BMMC	2.5×10^9	0.6	Intracoronary injection	Planar whole-body acquisitions/SPECT	1.31%–5.10% of cells were in the myocardium at 2 hours, BMMCs occupied the whole coronary artery territory at 2 hours, engraftment was confined to more distal parts of the infarction territory at 20 hours

Abbreviations: BMMC, bone marrow mononuclear cell; MSCs, mesenchymal stem/stromal cells; PCR, polymerase chain reaction; PET, positron emission tomography; SPECT, single-photon emission computed tomography; —, not reported.

increased uptake in other organs, especially in the liver [40–42]. Despite the benefits of delivery of MSCs to the target organs, there are increased risks of organ vascular occlusion which may lead to the development of ischemic lesions and cause mortality [42], and also one study has revealed the potential that the direct delivery method may influence MSC differentiation into an unintended lineage [43].

Table 2 summarized the in vivo distribution of therapeutic regenerative cells in clinical studies [12, 13, 27, 41, 44–54]. Almost half of the fifteen clinical trials (7 in 15) used unselected bone marrow mononuclear cells, which represent a heterogenous population of various stem and progenitor cells, stromal cells, and hematopoietic cells at various stages of maturation. Some others used progenitor/stem cells from bone marrow or peripheral blood. Only three trials reported the biodistribution of culture-expanded and enriched MSCs. The in vivo kinetics of MSCs are similar to that found in other therapeutic regenerative cells in terms of lung entrapment following intravenous infusion, with

differences in recirculation and migration that could be related to the disease. Tissue-specific homing has been demonstrated, indicating a response of all the administered stem cells to injured/diseased tissue. Compared with unselected bone marrow cells, more bone marrow stem cells, including MSCs, homed to infarcted human myocardium [45]. After systemic administration, the concentration of stem/progenitor cells was greatest among tissues with acute injury, and progressively decreased in tissues in an intermediate phase or a chronic stage [54]. However, variably low long-term engraftment of MSCs was found in the target organs after systemic administration. For the treatment of liver cirrhosis, there were only 13.0%–17.4% of MSCs in the liver 10 days after intravenous infusion [41]. Even after intracoronary injection, only 10% of the administered bone marrow stem cells were retained within the myocardium within 24 hours in patients with acute myocardial infarction, while the majority of MSC were found in the spleen and liver [44]. Overall, these recent clinical trials suggest that only a small

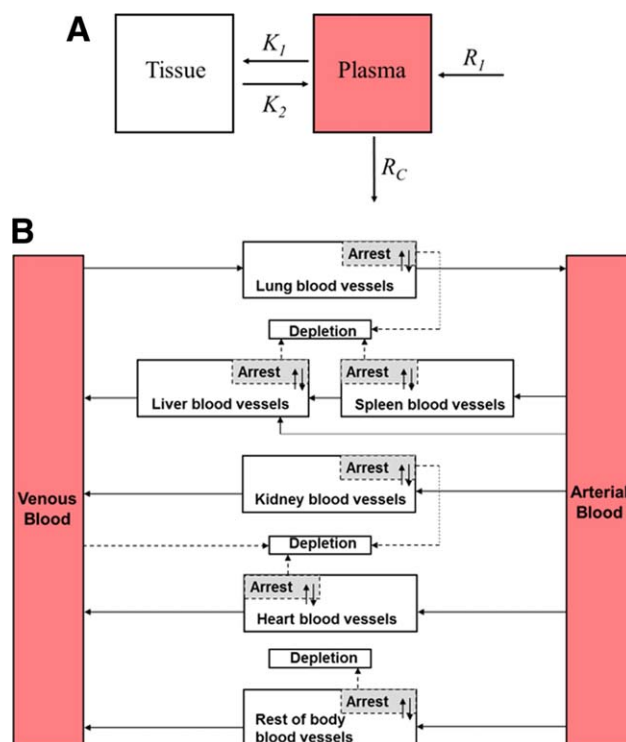


Figure 1. Modeling the in vivo kinetics of therapeutic mesenchymal stem/stromal cells (MSCs). **(A):** Schematic diagram of two-compartment pharmacokinetic model incorporating four parameters: R_i , injection rate; R_c , clearance rate; K_1 , rate of extravasation; and K_2 , rate of intravasation. **(B):** Schematic diagram of the PBPK model. The whole body was separated into eight compartments: arterial blood, venous blood, lungs, spleen, liver, kidneys, heart, and the rest of body. Solid arrows indicate blood flow, dashed gray arrows indicate the depletion of MSCs, and gray boxes indicate the arrested MSCs isolated from blood circulation as in the extravascular space of organ.

percentage of the original systemically administered therapeutic regenerative cells are capable of engrafting even under the best conditions, and of those that do engraft, only a small percentage have been shown to convey potent therapeutic responses.

MODELING THE IN VIVO KINETICS OF THERAPEUTIC MSCS

During the past 30 years, pharmacokinetic modeling approaches have been successfully applied to systematically analyze and predict the safety and efficacy of therapeutic agents including small molecules and biological products such as peptides or antibodies. Just as these models have been used for pharmaceuticals, it should be possible to adapt these models to facilitate understanding and prediction of the effects of MSCs. However, the use of living cells as therapeutic agents differs in many important ways from traditional pharmacology. It can be particularly challenging for MSC-based therapy because of poorly understood pharmacokinetics and complex pharmacodynamics. MSCs convey therapeutic benefits by both engrafting and differentiating for regenerative applications, and relinquishing their molecular contents without directly contributing to new tissue formation. To simplify the explanation of their in vivo kinetics, the dynamics of systemically administered MSCs have previously been considered similar to that of inert micrometer-scale particles injected into the bloodstream of animals [55]. Shim et al. calculated the noncompartmental pharmacokinetic parameters (maximum serum concentration, area under curve and mean residence time) of MSCs as inert particles after intravenous and intra-articular injection, and concluded that

mean residence time values for intra-articularly transplanted MSCs were longer than those for intravenously administered MSCs [17]. In the view of MSC imparting therapeutic benefits by secreting soluble factors in vivo, MSCs may be better considered as drug delivery particles. Elman et al. reported the time to reach maximum serum concentration, the half-life, and the elimination constant of MSCs and their secreted factors (monocyte chemoattractant protein-1, interleukin-6, and interleukin-8) [56]. This is the only study of pharmacokinetic analysis of MSC secretome in vivo. However, no pharmacokinetic model was developed in this study. Administered cells are not subject to conventional chemical analyses, making it unsuitable to apply standard pharmacokinetic modeling techniques and profiles. A multidisciplinary collaboration between experimental, modeling and clinical areas will be required to integrate the concepts of modern pharmacokinetic modeling in cell therapy, given the complexity of techniques required for experiments and the expertise needed for imaging, modeling, and clinical translation. Only recently, the two-compartment pharmacokinetic model of therapeutic MSCs was developed to propose designs of dosing regimens [4]. As shown in Figure 1A, this model incorporated four parameters: R_i , injection rate; R_c , clearance rate; K_1 , rate of extravasation; and K_2 , rate of intravasation. The model analysis suggests that the administered MSCs are only therapeutically active for a short period of time (less than 24 hours). The model predicted data are consistent with the cytokine response associated with MSC transplantation or MSC-derived molecules (secretome) when the latter were administered to animals with systemic inflammation [5, 57]. This study revealed that successive doses of MSCs within a shorter treatment period may allow for the

maintenance of MSC-based therapy within a therapeutic window that can sustain a long-term biological response ultimately. Thus, MSCs may need to be administered at a greater magnitude and/or frequency to sustain a long-term biological response. Both clinical and preclinical studies have demonstrated the safety and efficacy of multiple deliveries of MSCs [58, 59]. In the treatment of graft-versus-host disease, smaller MSC doses with multiple infusions appear to be more promising compared with single bolus administration [60, 61]. The question of frequency and timing rather than just dose as a factor in response for MSC-based therapies remains to be explored in future studies.

Different to empirical pharmacokinetic models, physiologically based pharmacokinetic (PBPK) model is based on the anatomical structure of the living systems, with each important organ regarded as an individual compartment. All compartments are connected by blood flow. The complex, yet regulated, *in vivo* kinetics of administered therapeutic cells are amenable to PBPK model building and analysis. The applications of PBPK modeling for therapeutic cells have appeared as early as 1996 [62]. More efforts are being made to use PBPK models for the advancement of cell therapy, including T lymphocytes, tumor-infiltrating lymphocytes, and natural killer cells. PBPK modeling has just been used in MSC-based therapies recently and the first PBPK model for MSCs was published in 2016 [14]. In this study, the model development invoked assumptions based on direct visualization of MSC spatiotemporal disposition by intravital microscopy and assessment of cell quantity using flow cytometry. As shown in Figure 1B, the whole body was separated into eight compartments: arterial blood, venous blood, lungs, spleen, liver, kidneys, heart, and the rest of body. All compartments were interconnected via the systemic blood circulation. Key components included in the model were species-specific physiological parameters (body weight, organ volume, and blood flow) and MSC-specific parameters (partition coefficient, arrest rate constant, release rate constant, and depletion rate constant). The sensitivity analysis of this PBPK model suggest that the targeting efficiency of MSCs is determined by the lung retention and interaction between MSCs and target organs, including cell arrest, depletion and release. The clinical utility of the model was also tested with data obtained from stem cell-based therapies to patients with liver cirrhosis [41, 49]. This study suggests that instead of increasing the dose, possible strategies to further improve the target efficiency of MSC-based therapies would be bypassing the initial lung entrapment and enhancing organ-specific capture by modulating cell surface properties. Pharmacokinetic model studies have the potential for interspecies scaling, which allows prediction of the *in vivo* kinetics of therapeutic cells in humans using animal data. While for the other types of preclinical studies on MSC kinetics, it is not clear to what degree the findings in animals are quantitatively transferable to humans. By systematically examining the effects of changing individual model parameters, models can also identify key parameters and their values, and suggest possible strategies for improvements in biodistribution. Thus, we anticipate that after this theoretical framework of PBPK model for MSCs, more second-generation pharmacokinetic models will be developed based on a more comprehensive view of MSCs and their secretome to reduce experimental costs due to a systematic minimization of required testing, increase throughput of discovery, and ultimately lead to more efficacious treatment regimens.

CONCLUSION

From both the completed and ongoing clinical trials, MSC-based therapies represent an exciting approach that could potentially treat various diseases and maintain the promise of safety. However, much work remains to be done before MSCs can pass from clinical trials to the standard treatment protocols; the dosing regimen especially can be considered the Achilles' heel of MSC-based therapies. With the current dosing regimen, the majority of therapeutic regenerative cells cannot be located in target organs by sensitive quantitative detection techniques over long time periods after systemic administration. By using the pharmacokinetic modeling approach, researchers and clinicians have attempted to characterize and predict the *in vivo* kinetics of systemically applied MSCs in order to maximize their therapeutic activity while minimizing potential side effects. Recently published pharmacokinetic models for MSCs suggest that MSCs may need to be administered at a greater magnitude and/or frequency to sustain a long-term biological response. Other possible strategies to further improve the target efficiency of MSC-based therapies could be bypassing the initial lung entrapment and enhancing organ-specific capture by modulating cell surface properties. More second-generation pharmacokinetic models will be developed to facilitate design of new formulations and dosing regimens for cell therapies.

ACKNOWLEDGMENTS

This work was supported by grants from National Health and Medical Research Council (APP1126091 and APP1055176).

AUTHOR CONTRIBUTIONS

A.B., K.F., and X. Liang: literature review and analysis, manuscript writing; X.H.: literature review and analysis; X. Liu., D.H.G.C., M.R.D., and M.S.R.: manuscript writing, financial support; H.W.: conception and design, manuscript writing, final approval of manuscript.

DISCLOSURE OF POTENTIAL CONFLICTS OF INTEREST

Dr. Doran holds a Fellowship with the National Health and Medical Research Council of Australia. Dr. Roberts provided expert independent advice to the U.S. Federal Trade Commission and others including various patent cases. He is an Australian National Health & Medical Research Council project grant holder and Fellow, a member of a compulsory UniSuper superannuation action fund which manages various and Director of a family company which manages consulting disclosed above. The other authors indicated no potential conflicts of interest.

NOTE ADDED IN PROOF

This article was published online on 06 December 2017. Minor edits have been made that do not affect data. This notice is included in the online and print versions to indicate that both have been corrected 28 December 2017.

REFERENCES

- 1 Horwitz EM, Prockop DJ, Fitzpatrick LA et al. Transplantability and therapeutic effects of bone marrow-derived mesenchymal cells in children with osteogenesis imperfecta. *Nat Med* 1999;5:309–313.
- 2 Squillaro T, Peluso G, Galderisi U. Clinical trials with mesenchymal stem cells: An update. *Cell Transplant* 2016;25:829–848.
- 3 Clinical Trials Available at <https://clinicaltrials.gov/>. Accessed July 21, 2017.
- 4 Parekkadan B, Milwid JM. Mesenchymal stem cells as therapeutics. *Annu Rev Biomed Eng* 2010;12:87–117.
- 5 Lee RH, Pulin AA, Seo MJ et al. Intravenous hMSCs improve myocardial infarction in mice because cells embolized in lung are activated to secrete the anti-inflammatory protein TSG-6. *Cell Stem Cell* 2009;5:54–63.
- 6 Zhao P, Zhang L, Grillo JA et al. Applications of physiologically based pharmacokinetic (PBPK) modeling and simulation during regulatory review. *Clin Pharmacol Ther* 2011;89:259–267.
- 7 Reagan MR, Kaplan DL. Concise review: Mesenchymal stem cell tumor-homing: Detection methods in disease model systems. *STEM CELLS* 2011;29:920–927.
- 8 Kircher MF, Gambhir SS, Grimm J. Noninvasive cell-tracking methods. *Nat Rev Clin Oncol* 2011;8:677–688.
- 9 Golpanian S, Schulman IH, Ebert RF et al. Concise review: Review and perspective of cell dosage and routes of administration from pre-clinical and clinical studies of stem cell therapy for heart disease. *Stem Cells Translational Medicine* 2016;5:186–191.
- 10 Karp JM, Leng Teo GS. Mesenchymal stem cell homing: The devil is in the details. *Cell Stem Cell* 2009;4:206–216.
- 11 Leibacher J, Henschler R. Biodistribution, migration and homing of systemically applied mesenchymal stem/stromal cells. *Stem Cell Res Ther* 2016;7:7.
- 12 Ringden O, Uzunel M, Rasmuson I et al. Mesenchymal stem cells for treatment of therapy-resistant graft-versus-host disease. *Transplantation* 2006;81:1390–1397.
- 13 Koc ON, Gerson SL, Cooper BW et al. Rapid hematopoietic recovery after coinfusion of autologous-blood stem cells and culture-expanded marrow mesenchymal stem cells in advanced breast cancer patients receiving high-dose chemotherapy. *J Clin Oncol* 2000;18:307–316.
- 14 Wang H, Liang X, Xu ZP et al. A physiologically based kinetic model for elucidating the in vivo distribution of administered mesenchymal stem cells. *Sci Rep* 2016;6:22293.
- 15 Bulte JW. In vivo MRI cell tracking: Clinical studies. *AJR Am J Roentgenol* 2009;193:314–325.
- 16 Nguyen PK, Riegler J, Wu JC. Stem cell imaging: From bench to bedside. *Cell Stem Cell* 2014;14:431–444.
- 17 Shim G, Lee S, Han J et al. Pharmacokinetics and in vivo fate of intra-articularly transplanted human bone marrow-derived clonal mesenchymal stem cells. *Stem Cells Dev* 2015;24:1124–1132.
- 18 Sensebe L, Fleury-Cappellesso S. Biodistribution of mesenchymal stem/stromal cells in a preclinical setting. *Stem Cells Int* 2013;2013:678063.
- 19 Luch A. Nature and nurture - lessons from chemical carcinogenesis. *Nat Rev Cancer* 2005;5:113–125.
- 20 Swart JF, de Roock S, Hofhuis FM et al. Mesenchymal stem cell therapy in proteoglycan induced arthritis. *Ann Rheum Dis* 2015;74:769–777.
- 21 Stender S, Murphy M, O'Brien T et al. Adeno-associated viral vector transduction of human mesenchymal stem cells. *Eur Cell Mater* 2007;13:93–99; discussion 99.
- 22 Ginn SL, Alexander IE, Edelstein ML et al. Gene therapy clinical trials worldwide to 2012 - an update. *J Gene Med* 2013;15:65–77.
- 23 Nathwani AC, Reiss UM, Tuddenham EG et al. Long-term safety and efficacy of factor IX gene therapy in hemophilia B. *N Engl J Med* 2014;371:1994–2004.
- 24 Nejadnik H, Ye D, Lenkov OD et al. Magnetic resonance imaging of stem cell apoptosis in arthritic joints with a caspase activatable contrast agent. *ACS Nano* 2015;9:1150–1160.
- 25 Ye D, Shuhendler AJ, Pandit P et al. Caspase-responsive smart gadolinium-based contrast agent for magnetic resonance imaging of drug-induced apoptosis. *Chem Sci* 2014;4:3845–3852.
- 26 Ye D, Shuhendler AJ, Cui L et al. Bioorthogonal cyclization-mediated in situ self-assembly of small-molecule probes for imaging caspase activity in vivo. *Nat Chem* 2014;6:519–526.
- 27 Goussetis E, Manginas A, Koutelou M et al. Intracoronary infusion of CD133+ and CD133-CD34+ selected autologous bone marrow progenitor cells in patients with chronic ischemic cardiomyopathy: Cell isolation, adherence to the infarcted area, and body distribution. *STEM CELLS* 2006;24:2279–2283.
- 28 Kim T, Lee N, Arifin DR et al. In vivo micro-CT imaging of human mesenchymal stem cells labeled with gold-poly-L-lysine nanocomplexes. *Adv Funct Mater* 2017;27:1604213.
- 29 Zhang L, Wang Y, Tang Y et al. High MRI performance fluorescent mesoporous silica-coated magnetic nanoparticles for tracking neural progenitor cells in an ischemic mouse model. *Nanoscale* 2013;5:4506–4516.
- 30 Patel D, Kell A, Simard B et al. The cell labeling efficacy, cytotoxicity and relaxivity of copper-activated MRI/PET imaging contrast agents. *Biomaterials* 2011;32:1167–1176.
- 31 Tang Y, Zhang C, Wang J et al. MRI/SPECT/fluorescent tri-modal probe for evaluating the homing and therapeutic efficacy of transplanted mesenchymal stem cells in a rat ischemic stroke model. *Adv Funct Mater* 2015;25:1024–1034.
- 32 Marino R, Martinez C, Boyd K et al. Transplantable marrow osteoprogenitors engraft in discrete saturable sites in the marrow microenvironment. *Exp Hematol* 2008;36:360–368.
- 33 Wu J, Sun Z, Sun HS et al. Intravenously administered bone marrow cells migrate to damaged brain tissue and improve neural function in ischemic rats. *Cell Transplant* 2008;16:993–1005.
- 34 Dominici M, Marino R, Rasini V et al. Donor cell-derived osteopoiesis originates from a self-renewing stem cell with a limited regenerative contribution after transplantation. *Blood* 2008;111:4386–4391.
- 35 Hass R, Kasper C, Bohm S et al. Different populations and sources of human mesenchymal stem cells (MSC): A comparison of adult and neonatal tissue-derived MSC. *Cell Commun Signal* 2011;9:12.
- 36 Phinney DG, Sensebe L. Mesenchymal stromal cells: Misconceptions and evolving concepts. *Cytotherapy* 2013;15:140–145.
- 37 Iop L, Chiavegato A, Callegari A et al. Different cardiovascular potential of adult- and fetal-type mesenchymal stem cells in a rat model of heart cryoinjury. *Cell Transplant* 2008;17:679–694.
- 38 Rombouts WJC, Ploemacher RE. Primary murine MSC show highly efficient homing to the bone marrow but lose homing ability following culture. *Leukemia* 2003;17:160–170.
- 39 Zhang J, Huang X, Wang H et al. The challenges and promises of allogeneic mesenchymal stem cells for use as a cell-based therapy. *Stem Cell Res Ther* 2015;6:234.
- 40 Makela T, Takalo R, Arvola O et al. Safety and biodistribution study of bone marrow-derived mesenchymal stromal cells and mononuclear cells and the impact of the administration route in an intact porcine model. *Cytotherapy* 2015;17:392–402.
- 41 Gholamrezaezhad A, Mirpour S, Bagheri M et al. In vivo tracking of ¹¹¹In-oxine labeled mesenchymal stem cells following infusion in patients with advanced cirrhosis. *Nucl Med Biol* 2011;38:961–967.
- 42 Walczak P, Zhang J, Gilad AA et al. Dual-modality monitoring of targeted intraarterial delivery of mesenchymal stem cells after transient ischemia. *Stroke* 2008;39:1569–1574.
- 43 Kunter U, Rong S, Boor P et al. Mesenchymal stem cells prevent progressive experimental renal failure but maldifferentiate into glomerular adipocytes. *J Am Soc Nephrol* 2007;18:1754–1764.
- 44 Kurpisz M, Czepczynski R, Grygielska B et al. Bone marrow stem cell imaging after intracoronary administration. *Int J Cardiol* 2007;121:194–195.
- 45 Hofmann M, Wollert KC, Meyer GP et al. Monitoring of bone marrow cell homing into the infarcted human myocardium. *Circulation* 2005;111:2198–2202.
- 46 Kang WJ, Kang HJ, Kim HS et al. Tissue distribution of ¹⁸F-FDG-labeled peripheral hematopoietic stem cells after intracoronary administration in patients with myocardial infarction. *J Nucl Med* 2006;47:1295–1301.
- 47 Cavelliers V, De Keulenaer G, Everaert H et al. In vivo visualization of ¹¹¹In labeled CD133+ peripheral blood stem cells after intracoronary administration in patients with chronic ischemic heart disease. *Q J Nucl Med Mol Imaging* 2007;51:61–66.
- 48 Schachinger V, Aicher A, Dobert N et al. Pilot trial on determinants of progenitor cell recruitment to the infarcted human myocardium. *Circulation* 2008;118:1425–1432.
- 49 Couto BG, Goldenberg RC, da Fonseca LM et al. Bone marrow mononuclear cell therapy for patients with cirrhosis: A Phase 1 study. *Liver Int* 2011;31:391–400.
- 50 Correa PL, Mesquita CT, Felix RM et al. Assessment of intra-arterial injected autologous bone marrow mononuclear cell distribution by radioactive labeling in acute ischemic stroke. *Clin Nucl Med* 2007;32:839–841.

51 Karpov RS, Popov SV, Markov VA et al. Autologous mononuclear bone marrow cells during reparative regeneration after acute myocardial infarction. *Bull Exp Biol Med* 2005; 140:640–643.

52 Barbosa da Fonseca LM, Xavier SS, Rosado de Castro PH et al. Biodistribution of bone marrow mononuclear cells in chronic chagasic cardiomyopathy after intracoronary injection. *Int J Cardiol* 2011;149:310–314.

53 Barbosa da Fonseca LM, Gutfilem B, Rosado de Castro PH et al. Migration and homing of bone-marrow mononuclear cells in chronic ischemic stroke after intra-arterial injection. *Exp Neurol* 2010;221:122–128.

54 Penicka M, Lang O, Widimsky P et al. One-day kinetics of myocardial engraftment after intracoronary injection of bone marrow mononuclear cells in patients with acute and chronic myocardial infarction. *Heart* 2007;93: 837–841.

55 Sjöholm I, Edman P. Acrylic microspheres in vivo. I. Distribution and elimination of polyacrylamide microparticles after intravenous and intraperitoneal injection in mouse and rat. *J Pharmacol Exp Ther* 1979;211:656–662.

56 Elman JS, Murray RC, Wang F et al. Pharmacokinetics of natural and engineered secreted factors delivered by mesenchymal stromal cells. *PLoS One* 2014;9:e89882.

57 Zangi L, Margalit R, Reich-Zeliger S et al. Direct imaging of immune rejection and memory induction by allogeneic mesenchymal stromal cells. *STEM CELLS* 2009;27: 2865–2874.

58 Ball LM, Bernardo ME, Roelofs H et al. Multiple infusions of mesenchymal stromal cells induce sustained remission in children with steroid-refractory, grade III-IV acute graft-versus-host disease. *Br J Haematol* 2013;163: 501–509.

59 Kol A, Wood JA, Carrade Holt DD et al. Multiple intravenous injections of allogeneic equine mesenchymal stem cells do not induce a systemic inflammatory response but do alter lymphocyte subsets in healthy horses. *Stem Cell Res Ther* 2015;6:73.

60 Zhou H, Guo M, Bian C et al. Efficacy of bone marrow-derived mesenchymal stem cells in the treatment of sclerodermatous chronic graft-versus-host disease: Clinical report. *Biol Blood Marrow Transplant* 2010; 16:403–412.

61 Lin Y, Hogan WJ. Clinical application of mesenchymal stem cells in the treatment and prevention of graft-versus-host disease. *Adv Hematol* 2011;2011:427863.

62 Zhu H, Melder RJ, Baxter LT et al. Physiologically based kinetic model of effector cell biodistribution in mammals: Implications for adoptive immunotherapy. *Cancer Res* 1996; 56:3771–3781.