

Review

Neutralization of Human Cytomegalovirus Entry into Fibroblasts and Epithelial Cells

Felix Wussow *, Flavia Chiuppesi, Heidi Contreras and Don J. Diamond

Department of Experimental Therapeutics, Beckman Research Institute of the City of Hope, Duarte, CA 91010, USA; fchiuppesi@coh.org (F.C.); hcontreras@coh.org (H.C.); ddiamond@coh.org (D.J.D.)

* Correspondence: fwussow@coh.org; Tel.: +1-626-218-3450; Fax: +1-626-218-8981

Academic Editor: C. A. H. H. (Toos) Daemen

Received: 13 October 2017; Accepted: 27 October 2017; Published: 31 October 2017

Abstract: Human cytomegalovirus (HCMV) is a leading cause of permanent birth defects, highlighting the need to develop an HCMV vaccine candidate. However, HCMV vaccine development is complicated by the varying capacity of neutralizing antibodies (NAb) to interfere in vitro with the HCMV entry routes mediating infection of fibroblast (FB) and epithelial cells (EC). While HCMV infection of FB and EC requires glycoprotein complexes composed of gB and gH/gL/gO, EC infection depends additionally on the envelope pentamer complex (PC) composed of gH, gL, UL128, UL130 and UL131A. Unlike NAb to gB or gH epitopes that can interfere with both FB and EC infection, NAb targeting predominantly conformational epitopes of the UL128/130/131A subunits are unable to prevent FB entry, though they are highly potent in blocking EC infection. Despite the selective requirement of the PC for EC entry, the PC is exceptionally immunogenic as vaccine antigen to stimulate both EC- and FB-specific NAb responses due to its capacity to elicit NAb that target epitopes of the UL128/130/131A subunits and gH. These findings suggest that the PC could be sufficient in a subunit vaccine formulation to induce robust FB- and EC-specific NAb responses. In this short review, we discuss NAb responses induced through natural infection and vaccination that interfere in vitro with HCMV infection of FB and EC.

Keywords: cytomegalovirus; neutralizing antibody; fibroblasts; epithelial cells; vaccine; glycoprotein complex; pentamer

1. Introduction

Human cytomegalovirus (HCMV) is a leading cause of severe developmental disabilities in newborns and life-threatening illnesses in individuals with a compromised immune system, such as AIDS patients and transplant recipients [1,2]. Based on a cost-benefit analysis by the Institute of Medicine, HCMV vaccine development is considered a “top-tier” national health priority [3]. Yet, despite considerable research efforts of almost half a century, an effective HCMV vaccine candidate remains elusive [4–6]. Major impediments in HCMV vaccine development include intricate immune evasion strategies, incomplete protection by natural immunity, establishment of viral latency, unknown immune correlates of protection, and lack of appropriate HCMV animal models [7–11]. Despite these obstacles, encouraging progress in developing an HCMV vaccine candidate has been made with an approach based on envelope glycoprotein B (gB) combined with MF59 adjuvant [12,13]. A Phase II clinical trial with gB/MF59 in women who had given birth within the previous year assessed efficacy rates of 50% to prevent primary HCMV infection [14]. However, a subsequent multicenter trial assessing efficacy of gB/MF59 in HCMV seronegative (HCMV-) adolescents did not reach significance [15]. In addition, a vaccine strategy based on live-attenuated HCMV strain Towne did not show efficacy to prevent primary HCMV infection in mothers whose children attended day care [16]. While a number of vaccine candidates have been shown to ameliorate disease in

solid organ and hematopoietic stem cell transplant recipients, gB/MF59 remains the only vaccine that demonstrated partial efficacy to prevent primary HCMV infection in women of childbearing age [4,16–20]. A vaccine formulation that could augment immune responses stimulated by gB alone may therefore provide significant protection against primary maternal HCMV infection, thereby reducing the risk of intrauterine virus transmission.

2. Neutralizing Antibody Responses Blocking HCMV Infection of Fibroblast and Epithelial Cells

Neutralizing antibodies (NAb) that interfere *in vitro* with glycoprotein complex-mediated virus entry into host cells are thought to contribute to the protection against HCMV infection [21–23]. Over the past years it has been recognized that HCMV infection of fibroblasts (FB) and epithelial cells (EC) occurs by distinct routes of entry that depend on an intricate interplay of different sets of envelope glycoprotein complexes. While HCMV entry into FB occurs by pH-independent fusion at the plasma membrane and requires glycoprotein complexes composed of gB and gH/gL/gO, HCMV entry into EC occurs by pH-dependent fusion at the endosomal membrane following endocytosis and depends on gB, gH/gL/gO, and additionally on the envelope pentamer complex (PC) composed of gH, gL, UL128, UL130, and UL131A [24–31] (Figures 1 and 2). Consistent with this HCMV entry model, NAb targeting epitopes of gB and gH can interfere with both FB and EC infection [32–35]. In contrast, NAb predominantly recognizing conformational epitopes of the UL128/130/131A subunits are unable to block FB infection, though they are substantially more potent than NAb targeting gB or gH epitopes to interfere with EC infection [32,33,35,36]. NAb specific for gO or the gM/gN complex are not well-characterized for their potency to block FB and EC entry, but a few examples of isolated antibodies indicate that NAb targeting these glycoproteins can interfere with both FB and EC infection [32,37]. These *in vitro* findings suggest that FB-specific NAb responses induced by HCMV are composed of NAb that target epitopes of gB, gH/gL/gO, and gM/gN, whereas EC-specific NAb responses induced by HCMV are composed of NAb specific for the PC in addition to NAb that target gB, gH/gL/gO, and gM/gN (Figure 1).

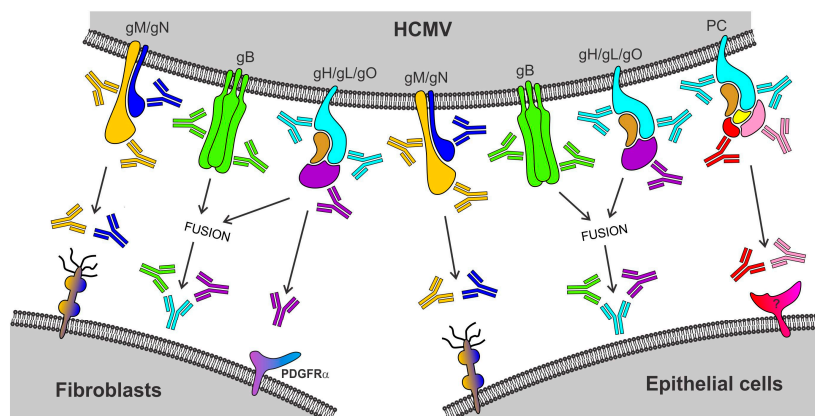


Figure 1. Model for Human cytomegalovirus (HCMV) entry and antibody-mediated neutralization. While HCMV entry into both fibroblasts (FB) and epithelial cells (EC) depends on envelope glycoprotein complexes composed of gM/gN, gB, or gH/gL/gO, HCMV entry into EC additionally requires the pentamer complex (PC) composed of gH, gL, UL128, UL130, and UL131A. While gM/gN may mediate initial attachment via glycosaminoglycans, gB and gH/gL/gO are thought to be involved in fusion of the virion envelope with cellular membranes during entry into both FB and EC, and gH/gL/gO or the PC appears to mediate receptor-binding during entry into FB or EC, respectively. Unlike NAb targeting glycoproteins of gM/gN (yellow and blue antibodies), gB (green antibodies), or gH/gL/gO (cyan and purple antibodies) that can block both FB and EC entry, NAb targeting epitopes of the UL128/130/131A subunits of the PC (red and pink antibodies) are unable to block FB infection, though they are highly potent in blocking EC infection.

While our understanding of the glycoprotein complexes that are required for FB and EC infection has increased in recent years, the processes that mediate and neutralize initial attachment, receptor-binding, and membrane fusion during FB and EC infection remain poorly understood [30,38]. Initial attachment during FB entry likely involves the interaction of gM/gN with glycosaminoglycans [39–41], but whether this is also the case for EC entry needs to be confirmed [32]. Generally it is well-accepted that gH/gL/gO mediates receptor-binding during FB entry most likely via interaction with platelet-derived growth factor receptor-alpha (PDGFR α) [42,43], whereas the PC mediates receptor-binding during EC entry via a yet unknown molecule (Figures 1 and 2) [44,45]. Other studies suggest an involvement of gB in receptor-binding during FB entry [46–49], although this remains controversial [27,50]. Following receptor-binding, gH/gL/gO and gB are thought to be involved in fusion of the virion envelope with cellular membranes [24,26–28,51–53], upon which the nucleocapsid is released into the cell cytoplasm (Figure 2). Membrane fusion may either occur at the plasma membrane during FB infection or at endosomal membranes during EC infection (Figure 2). Based on the HCMV entry routes mediating FB and EC infection it can be hypothesized that (1) gM/gN-specific NAb may block initial attachment during FB and EC entry; (2) NAb specific for gH/gL/gO or the PC prevent receptor-binding during HCMV entry into FB or EC, respectively; and (3) NAb specific for gH/gL/gO and gB may interfere with the fusion of the virion envelope with cellular membranes during both FB and EC infection (Figure 2).

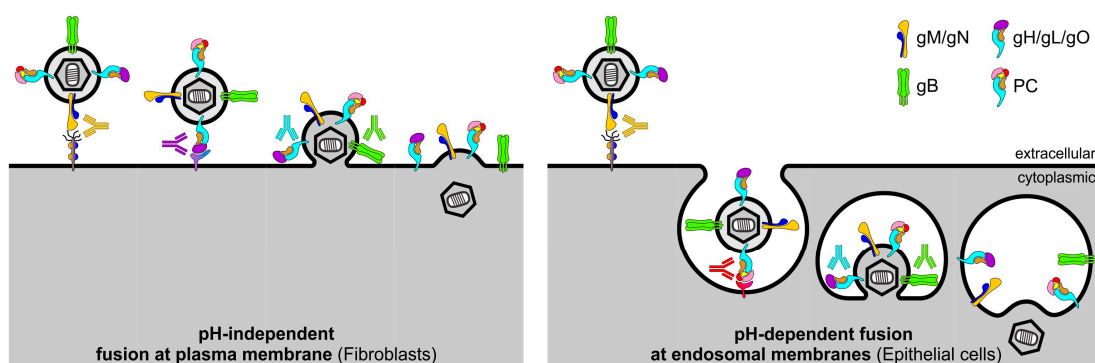


Figure 2. Model of HCMV entry routes and antibody interference. While HCMV entry into FB occurs by fusion at the plasma membrane, HCMV infection of EC is mediated by fusion at the endosomal membrane following endocytosis. During FB and EC entry, initial attachment may be mediated by gM/gN. Receptor-binding during FB entry is thought to occur by interaction of gH/gL/gO with PDGFR α . In contrast, receptor-binding during EC infection is mediated by interaction of the PC with an unknown molecule, which may in turn trigger PC-mediated endocytosis. Upon receptor-binding, gB and gH/gL/gO are thought to be involved in the fusion of the virion envelope with cellular membranes, which may occur either at the plasma membrane during FB entry or at endosomal membranes during EC entry. While NAb targeting gM/gN may interfere with the initial attachment, NAb targeting specific epitopes of gH/gL/gO or the PC may block receptor-binding during FB or EC entry, respectively. In addition, NAb targeting gH/gL/gO and gB may interfere with fusion of the virion envelope and cellular membranes.

Considering that isolated monoclonal NAb to gB and gH can effectively interfere with both FB and EC infection [32–37], antibodies to these envelope glycoproteins may significantly contribute to both the FB- and EC-specific NAb responses measured for HCMV seropositive (HCMV+) individuals in vitro. Similar assumptions may be made for NAb targeting gO or the gM/gN complex based on the potential involvement of these glycoproteins in HCMV entry and the neutralization capacity of isolated NAb targeting these glycoproteins [26,32,37] (Figures 1 and 2). However, hyperimmunoglobulins composed of antibodies of over 1000 HCMV+ individuals contain EC-specific NAb responses that are in majority directed against the HCMV PC [54], suggesting that the PC is the major target of NAb preventing EC infection. Presumably as a result of the exceptional potency of NAb recognizing the UL128/130/131A

subunits of the PC, NAb responses of HCMV+ individuals following primary infection are in vitro substantially more potent to interfere with EC infection than with FB infection [55,56] (Figure 3). However, this variable potency of HCMV NAb responses may also be associated with differences in the sensitivity to measure NAb with these cell types possibly as a result of variations in both ligand and receptor copy numbers. Why PC-specific NAb are in vitro substantially more potent to block EC infection than NAb targeting other envelope glycoproteins is unclear, but this could be related to the mechanism of neutralization, antibody affinity, or the low amount of the PC incorporated into virions, which potentially requires only minor amounts of antibody to neutralize PC-dependent entry in vitro [57].

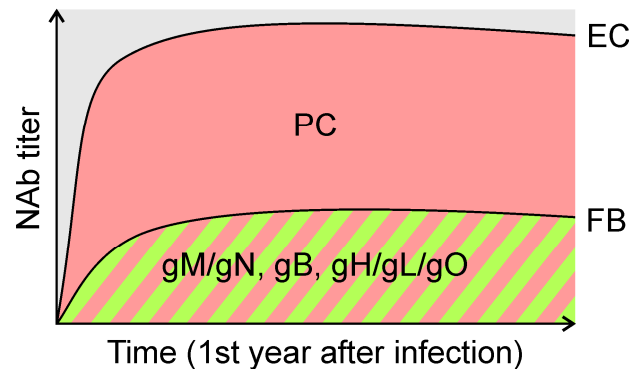


Figure 3. In vitro HCMV NAb responses. During the first year after primary HCMV infection, HCMV+ individuals develop NAb responses with different capacity to prevent in vitro EC and FB infection [56]. NAb measured with EC exceed those measured with FB by orders of magnitude. While FB-specific NAb responses are the result of NAb targeting epitopes of gM/gN, gB, and gH/gL/gO, EC-specific NAb responses are the result of NAb targeting the PC in addition to NAb targeting the gM/gN, gB or gH/gL/gO complexes. The predominant difference in FB- and EC- specific NAb responses is likely a consequence of NAb that target the UL128/130/131A subunits of the PC.

3. Vaccine-Mediated Neutralization of HCMV Infection of Fibroblasts and Epithelial Cells

While the gB/MF59 and Towne vaccine candidates can elicit both FB- and EC-specific NAb responses in immunized individuals, they are unable to induce high-titer EC-specific NAb similar to those induced by HCMV during natural infection [55] (Figure 3). These findings may suggest that the limited efficacy of gB/MF59 or the failure of the Towne vaccine to provide significant protection against HCMV infection could be associated with a partial “defect” in mounting robust EC-specific NAb responses. However, other reasons may also account for the deficient vaccine efficacy, including waning antibody titers, insufficient systemic immunity, or the use of a “dead” gB antigen conformation unable to optimally promote HCMV NAb induction [4,6,58]. Several studies converge to the conclusion that the “weak” immunogenicity of gB/MF59 and Towne to elicit EC-specific NAb could be in part related to the inability of these vaccine candidates to elicit anti-PC NAb [59]. As in the case of Towne, HCMV strain AD169 is unable to express a functional PC due to a mutation in the UL128/130/131A gene locus [25,60–62]. Restoration of UL128/130/131A gene expression significantly enhances the immunogenicity of HCMV AD169 to stimulate EC-specific NAb responses in mice and rhesus monkeys (RM) [63]. In addition, we and others have demonstrated consistently using different subunit vaccine approaches and animal models that the PC is substantially more immunogenic than gB or gH/gL in stimulating EC-specific NAb responses [35,59,64–68]. Importantly, all five HCMV PC subunits are required to optimally promote the stimulation of EC-specific NAb, indicating that the quaternary conformational neutralizing epitopes within the UL128/130/131A subunits are only formed effectively upon assembly of all five PC subunits [33,64]. These results suggest that the PC could be a major component in a vaccine formulation to stimulate HCMV NAb responses that effectively interfere with EC infection.

Besides stimulating NAb that potently block HCMV infection of EC, a vaccine approach based on the PC also elicits FB-specific NAb responses that can reach titers of similar or even higher magnitude compared to NAb stimulated by gB or gH/gL complexes [35,59,64]. Consequently, the PC, like gB and gH/gL, has the capacity to elicit NAb responses that block both FB and EC infection, whereby the PC is substantially more immunogenic than gB and gH/gL in eliciting NAb that interfere with EC entry. While the capacity of gB and gH/gL to stimulate NAb that block both FB and EC entry is easy to comprehend, in the case of the PC this may appear contradictory considering the selective requirement of the PC for EC entry and the cell-type specific neutralizing capacity of PC-specific NAb (Figures 1 and 2). Yet, as we and others have shown [33,35], a vaccine approach based on the PC stimulates NAb to epitopes of the UL128/130/131A subunits that potently and specifically interfere with EC entry, and additionally elicits NAb of lower potency to epitopes of gH that interfere with both FB and EC entry (Figure 1). These properties of NAb targeting the UL128/130/131A subunits and gH are consistent with NAb found in HCMV+ individuals and suggest that the difference in EC- and FB-specific NAb responses stimulated by the PC is primarily a result of NAb that target the UL128/130/131A subunits (Figure 3) [32]. Because the PC elicits NAb that target epitopes of the UL128/130/131A subunits and gH [33,35], the PC alone may be sufficient to stimulate HCMV NAb responses that potently interfere in vitro with EC and FB infection. Future studies need to clarify whether a combination of the PC with gB or other envelope glycoproteins could enhance HCMV NAb induction, in particular with regards to FB neutralization and breadth of cross-neutralization activity.

4. HCMV Neutralizing Antibodies and Their Potential Protective Capacity In Vivo

Because of the in vitro function of NAb to interfere with HCMV entry, they are considered an important immune component to prevent congenital HCMV infection, although data that support this hypothesis remains relatively sparse [21–23]. Considering the proposed glycoprotein complex requirements for the FB and EC pathway of HCMV infection and the neutralization capacity of antibodies targeting the glycoproteins (Figure 1), it can be assumed that NAb targeting epitopes of gB, gH/gL/gO or gM/gN can broadly interfere with HCMV host cell entry and hence potentially contribute significantly to the protection against HCMV infection. In contrast, NAb that specifically interfere with PC-dependent entry may be particularly important to block the infection of specific cell types that are critically involved in HCMV dissemination and horizontal and vertical virus transmission. Based on their in vitro neutralization capacity, PC-specific NAb could potentially play an important role in preventing HCMV acquisition through infection of EC at oral mucosal membranes, cell-associated viremia through endothelial cell infection and virus transfer to leukocytes, or crossing of the fetal-maternal interface through placental cell infection [32,33,35,64,69]. Consistent with these conclusions inferred from in vitro findings for PC-specific NAb, a few studies with clinical samples suggest that NAb targeting the PC may be involved in the control of HCMV spreading in vivo and the prevention of HCMV vertical transmission [21,22].

Since HCMV is highly adapted to humans and unable to replicate efficiently in animals, HCMV vaccine optimization relies on surrogate animal models and their species-specific CMVs, most notably the guinea pig CMV (GpCMV) model of transplacental virus transmission and the rhesus CMV (RhCMV)/RM model [70,71]. While the importance of NAb targeting GpCMV gB or gH in preventing congenital infection is well-documented, the protective capacity of NAb that target the GpCMV homologs of the HCMV UL128/130/131A subunits is unknown [72–76]. Yet, considering that the GpCMV UL128/130/131A homologs are critical for GpCMV pathogenicity and trans-placental virus transmission [77,78], it can be surmised that NAb targeting these GpCMV proteins contribute to the prevention of congenital GpCMV infection. We have shown that vaccine approaches using plasmids or MVA vectors expressing either gB or the PC of RhCMV can reduce plasma viral load in naïve RM following RhCMV challenge [79–82], indicating that gB- and PC-specific antibodies are involved in the control of RhCMV viremia. In addition, a recent study using a novel non-human primate model of transplacental virus transmission suggests that pre-existing antibodies with high neutralizing

activity can protect against congenital RhCMV infection, whereby the reduction in maternal viral load correlated inversely with the rate of transmission [83,84]. These results suggest that a vaccine candidate able to elicit high-titer and sustained NAb could potentially prevent congenital HCMV infection either by significantly reducing maternal viremia or by directly interfering with trans-placental virus transmission. Future studies need to provide a more detailed understating of the protective capacity of NAb targeting the PC or other HCMV envelope glycoprotein complexes using clinical samples and surrogate animal models.

5. Conclusions

Although immune correlates of protection against HCMV infection remain unclear, HCMV vaccine development focuses on efforts to enhance the induction of NAb responses as one approach to improve the efficacy rates observed with gB/MF59. In recent years it has been understood that HCMV+ individuals develop NAb responses that in vitro have substantially different capacity to block the HCMV entry routes mediating infection of FB and EC. While NAb targeting the essential envelope glycoprotein complexes composed of gB or gH/gL/gO can effectively interfere with HCMV infection of both FB and EC infection, NAb mainly recognizing conformational epitopes of UL128/130/131A subunits of the PC are exceptionally potent to specifically block EC infection. Because the PC as a vaccine antigen elicits NAb that target epitopes of the UL128/130/131A and gH, the PC stimulates robust NAb that interfere with both EC and FB infection in vitro. These findings suggest the PC could be sufficient in a subunit vaccine formulation to elicit NAb responses that potently and broadly interfere with HCMV host cell entry.

Acknowledgments: We would like to thank Aline Matsuo for assisting in the submission process. This research was funded by U.S. Public Health Service grant R01 AI103960 and AI063356 to Don J. Diamond. Don J. Diamond was partially supported by CA077544 and CA181045. The content of this work is solely the responsibility of the authors and does not necessarily represent the official views of the National Institutes of Health.

Author Contributions: F.W. composed all illustrations and wrote the article; F.C., H.C. and D.J.D. contributed to the writing of the article.

Conflicts of Interest: All authors receive research support from Helocyte Inc. Don J. Diamond, Felix Wussow and Flavia Chiuppesi receive royalty payments from Helocyte Inc. Don J. Diamond chairs the Scientific Advisory Board and has an equity interest in Helocyte Inc.

References

1. Crough, T.; Khanna, R. Immunobiology of human cytomegalovirus: From bench to bedside. *Clin. Microbiol. Rev.* **2009**, *22*, 76–98. [[CrossRef](#)] [[PubMed](#)]
2. Britt, W. Manifestations of human cytomegalovirus infection: Proposed mechanisms of acute and chronic disease. *Curr. Top. Microbiol. Immunol.* **2008**, *325*, 417–470. [[PubMed](#)]
3. Stratton, K.R.; Durch, J.S.; Lawrence, R.S. *Vaccines for the 21st Century: A Tool for Decisionmaking*; The National Academies Press: Washington, DC, USA, 2000.
4. Schleiss, M.R. Cytomegalovirus vaccines under clinical development. *J. Virus Erad.* **2016**, *2*, 198–207. [[PubMed](#)]
5. Anderholm, K.M.; Bierle, C.J.; Schleiss, M.R. Cytomegalovirus vaccines: Current status and future prospects. *Drugs* **2016**, *76*, 1625–1645. [[CrossRef](#)] [[PubMed](#)]
6. Plotkin, S. The history of vaccination against cytomegalovirus. *Med. Microbiol. Immunol.* **2015**, *204*, 247–254. [[CrossRef](#)] [[PubMed](#)]
7. Britt, W. Controversies in the natural history of congenital human cytomegalovirus infection: The paradox of infection and disease in offspring of women with immunity prior to pregnancy. *Med. Microbiol. Immunol.* **2015**. [[CrossRef](#)] [[PubMed](#)]
8. Yue, Y.; Barry, P.A. Rhesus cytomegalovirus a nonhuman primate model for the study of human cytomegalovirus. *Adv. Virus Res.* **2008**, *72*, 207–226. [[PubMed](#)]
9. Britt, W.J. Congenital human cytomegalovirus infection and the enigma of maternal immunity. *J. Virol.* **2017**. [[CrossRef](#)] [[PubMed](#)]

10. Jackson, S.E.; Mason, G.M.; Wills, M.R. Human cytomegalovirus immunity and immune evasion. *Virus Res.* **2011**, *157*, 151–160. [[CrossRef](#)] [[PubMed](#)]
11. Sinclair, J. Human cytomegalovirus: Latency and reactivation in the myeloid lineage. *J. Clin. Virol.* **2008**, *41*, 180–185. [[CrossRef](#)] [[PubMed](#)]
12. Pass, R.F. Development and evidence for efficacy of CMV glycoprotein B vaccine with MF59 adjuvant. *J. Clin. Virol.* **2009**, *46*, S73–S76. [[CrossRef](#)] [[PubMed](#)]
13. Spaete, R.R. A recombinant subunit vaccine approach to HCMV vaccine development. *Transplant. Proc.* **1991**, *23*, 90–96. [[PubMed](#)]
14. Pass, R.F.; Zhang, C.; Evans, A.; Simpson, T.; Andrews, W.; Huang, M.L.; Corey, L.; Hill, J.; Davis, E.; Flanagan, C.; et al. Vaccine prevention of maternal cytomegalovirus infection. *N. Engl. J. Med.* **2009**, *360*, 1191–1199. [[CrossRef](#)] [[PubMed](#)]
15. Bernstein, D.I.; Munoz, F.M.; Callahan, S.T.; Rupp, R.; Wootton, S.H.; Edwards, K.M.; Turley, C.B.; Stanberry, L.R.; Patel, S.M.; McNeal, M.M.; et al. Safety and efficacy of a cytomegalovirus glycoprotein B (gB) vaccine in adolescent girls: A randomized clinical trial. *Vaccine* **2016**, *34*, 313–319. [[CrossRef](#)] [[PubMed](#)]
16. Adler, S.P.; Starr, S.E.; Plotkin, S.A.; Hempfling, S.H.; Buis, J.; Manning, M.L.; Best, A.M. Immunity induced by primary human cytomegalovirus infection protects against secondary infection among women of childbearing age. *J. Infect. Dis.* **1995**, *171*, 26–32. [[CrossRef](#)] [[PubMed](#)]
17. Plotkin, S.A.; Weibel, R.E.; Alpert, G.; Starr, S.E.; Friedman, H.M.; Preblud, S.R.; Hoxie, J. Resistance of seropositive volunteers to subcutaneous challenge with low-passage human cytomegalovirus. *J. Infect. Dis.* **1985**, *151*, 737–739. [[CrossRef](#)] [[PubMed](#)]
18. Plotkin, S.A.; Higgins, R.; Kurtz, J.B.; Morris, P.J.; Campbell, D.A., Jr.; Shope, T.C.; Spector, S.A.; Dankner, W.M. Multicenter trial of town strain attenuated virus vaccine in seronegative renal transplant recipients. *Transplantation* **1994**, *58*, 1176–1178. [[PubMed](#)]
19. Kharfan-Dabaja, M.A.; Boeckh, M.; Wilck, M.B.; Langston, A.A.; Chu, A.H.; Wloch, M.K.; Guterwill, D.F.; Smith, L.R.; Rolland, A.P.; Kenney, R.T. A novel therapeutic cytomegalovirus DNA vaccine in allogeneic haemopoietic stem-cell transplantation: A randomised, double-blind, placebo-controlled, phase 2 trial. *Lancet Infect. Dis.* **2012**, *12*, 290–299. [[CrossRef](#)]
20. La Rosa, C.; Longmate, J.; Martinez, J.; Zhou, Q.; Kaltcheva, T.I.; Tsai, W.; Drake, J.; Carroll, M.; Wussow, F.; Chiappesi, F.; et al. MVA vaccine encoding CMV antigens safely induces durable expansion of CMV-specific t-cells in healthy adults. *Blood* **2016**. [[CrossRef](#)] [[PubMed](#)]
21. Lilleri, D.; Kabanova, A.; Revello, M.G.; Percivalle, E.; Sarasini, A.; Genini, E.; Sallusto, F.; Lanzavecchia, A.; Corti, D.; Gerna, G. Fetal human cytomegalovirus transmission correlates with delayed maternal antibodies to gh/gl/pul128-130-131 complex during primary infection. *PLoS ONE* **2013**, *8*, e59863. [[CrossRef](#)] [[PubMed](#)]
22. Lilleri, D.; Kabanova, A.; Lanzavecchia, A.; Gerna, G. Antibodies against neutralization epitopes of human cytomegalovirus gh/gl/pul128-130-131 complex and virus spreading may correlate with virus control in vivo. *J. Clin. Immunol.* **2012**, *32*, 1324–1331. [[CrossRef](#)] [[PubMed](#)]
23. Boppana, S.B.; Britt, W.J. Antiviral antibody responses and intrauterine transmission after primary maternal cytomegalovirus infection. *J. Infect. Dis.* **1995**, *171*, 1115–1121. [[CrossRef](#)] [[PubMed](#)]
24. Zhou, M.; Lanchy, J.M.; Ryckman, B.J. Human cytomegalovirus gH/gL/gO promotes the fusion step of entry into all cell types whereas gH/gL/UL128-131 broadens virus tropism through a distinct mechanism. *J. Virol.* **2015**. [[CrossRef](#)] [[PubMed](#)]
25. Wang, D.; Shenk, T. Human cytomegalovirus virion protein complex required for epithelial and endothelial cell tropism. *Proc. Natl. Acad. Sci. USA* **2005**, *102*, 18153–18158. [[CrossRef](#)] [[PubMed](#)]
26. Wille, P.T.; Knoche, A.J.; Nelson, J.A.; Jarvis, M.A.; Johnson, D.C. A human cytomegalovirus go-null mutant fails to incorporate gH/gL into the virion envelope and is unable to enter fibroblasts and epithelial and endothelial cells. *J. Virol.* **2010**, *84*, 2585–2596. [[CrossRef](#)] [[PubMed](#)]
27. Wille, P.T.; Wisner, T.W.; Ryckman, B.; Johnson, D.C. Human cytomegalovirus (HCMV) glycoprotein gB promotes virus entry in trans acting as the viral fusion protein rather than as a receptor-binding protein. *mBio* **2013**. [[CrossRef](#)] [[PubMed](#)]
28. Heldwein, E.E. Gh/gl supercomplexes at early stages of herpesvirus entry. *Curr. Opin. Virol.* **2016**, *18*, 1–8. [[CrossRef](#)] [[PubMed](#)]

29. Ryckman, B.J.; Jarvis, M.A.; Drummond, D.D.; Nelson, J.A.; Johnson, D.C. Human cytomegalovirus entry into epithelial and endothelial cells depends on genes UL128 to UL150 and occurs by endocytosis and low-pH fusion. *J. Virol.* **2006**, *80*, 710–722. [[CrossRef](#)] [[PubMed](#)]
30. Gardner, T.J.; Tortorella, D. Virion glycoprotein-mediated immune evasion by human cytomegalovirus: A sticky virus makes a slick getaway. *Microbiol. Molecul. Boil. Rev.* **2016**, *80*, 663–677. [[CrossRef](#)] [[PubMed](#)]
31. Sathiyamoorthy, K.; Chen, J.; Longnecker, R.; Jardetzky, T.S. The complexity in herpesvirus entry. *Curr. Opin. Virol.* **2017**, *24*, 97–104. [[CrossRef](#)] [[PubMed](#)]
32. Macagno, A.; Bernasconi, N.L.; Vanzetta, F.; Dander, E.; Sarasini, A.; Revello, M.G.; Gerna, G.; Sallusto, F.; Lanzavecchia, A. Isolation of human monoclonal antibodies that potently neutralize human cytomegalovirus infection by targeting different epitopes on the gH/gL/UL128-131a complex. *J. Virol.* **2010**, *84*, 1005–1013. [[CrossRef](#)] [[PubMed](#)]
33. Chiuppesi, F.; Wussow, F.; Johnson, E.; Bian, C.; Zhuo, M.; Rajakumar, A.; Barry, P.A.; Britt, W.J.; Chakraborty, R.; Diamond, D.J. Vaccine-derived neutralizing antibodies to the human cytomegalovirus gH/gL pentamer potently block primary cytotrophoblast infection. *J. Virol.* **2015**, *89*, 11884–11898. [[CrossRef](#)] [[PubMed](#)]
34. Potzsch, S.; Spindler, N.; Wieggers, A.K.; Fisch, T.; Rucker, P.; Sticht, H.; Grieb, N.; Baroti, T.; Weisel, F.; Stamminger, T.; et al. B cell repertoire analysis identifies new antigenic domains on glycoprotein B of human cytomegalovirus which are target of neutralizing antibodies. *PLoS Pathog.* **2011**, *7*, e1002172. [[CrossRef](#)] [[PubMed](#)]
35. Kabanova, A.; Perez, L.; Lilleri, D.; Marcandalli, J.; Agatic, G.; Becattini, S.; Preite, S.; Fuschillo, D.; Percivalle, E.; Sallusto, F.; et al. Antibody-driven design of a human cytomegalovirus gH/gL/pUL128l subunit vaccine that selectively elicits potent neutralizing antibodies. *Proc. Natl. Acad. Sci. USA* **2014**, *111*, 17965–17970. [[CrossRef](#)] [[PubMed](#)]
36. Freed, D.C.; Tang, Q.; Tang, A.; Li, F.; He, X.; Huang, Z.; Meng, W.; Xia, L.; Finnefrock, A.C.; Durr, E.; et al. Pentameric complex of viral glycoprotein H is the primary target for potent neutralization by a human cytomegalovirus vaccine. *Proc. Natl. Acad. Sci. USA* **2013**, *110*, E4997–E5005. [[CrossRef](#)] [[PubMed](#)]
37. Gerna, G.; Percivalle, E.; Perez, L.; Lanzavecchia, A.; Lilleri, D. Monoclonal antibodies to different components of the human cytomegalovirus (HCMV) pentamer gH/gL/PUL128l and trimer gH/gL/gO as well as antibodies elicited during primary HCMV infection prevent epithelial cell syncytium formation. *J. Virol.* **2016**, *90*, 6216–6223. [[CrossRef](#)] [[PubMed](#)]
38. Vanarsdall, A.L.; Johnson, D.C. Human cytomegalovirus entry into cells. *Curr. Opin. Virol.* **2012**, *2*, 37–42. [[CrossRef](#)] [[PubMed](#)]
39. Compton, T.; Nowlin, D.M.; Cooper, N.R. Initiation of human cytomegalovirus infection requires initial interaction with cell surface heparan sulfate. *Virology* **1993**, *193*, 834–841. [[CrossRef](#)] [[PubMed](#)]
40. Kari, B.; Gehrz, R. Structure, composition and heparin binding properties of a human cytomegalovirus glycoprotein complex designated gC-II. *J. Gen. Virol.* **1993**, *74*, 255–264. [[CrossRef](#)] [[PubMed](#)]
41. Compton, T. Receptors and immune sensors: The complex entry path of human cytomegalovirus. *Trends Cell Boil.* **2004**, *14*, 5–8. [[CrossRef](#)]
42. Kabanova, A.; Marcandalli, J.; Zhou, T.; Bianchi, S.; Baxa, U.; Tsybovsky, Y.; Lilleri, D.; Silacci-Fregni, C.; Foglierini, M.; Fernandez-Rodriguez, B.M.; et al. Platelet-derived growth factor- α receptor is the cellular receptor for human cytomegalovirus gH/gL/gO trimer. *Nat. Microbiol.* **2016**, *1*, 16082. [[CrossRef](#)] [[PubMed](#)]
43. Wu, Y.; Prager, A.; Boos, S.; Resch, M.; Brizic, I.; Mach, M.; Wildner, S.; Scrivano, L.; Adler, B. Human cytomegalovirus glycoprotein complex gH/gL/gO uses PDGFR- α as a key for entry. *PLoS Pathog.* **2017**, *13*, e1006281. [[CrossRef](#)] [[PubMed](#)]
44. Ryckman, B.J.; Chase, M.C.; Johnson, D.C. HCMV gH/gL/UL128-131 interferes with virus entry into epithelial cells: Evidence for cell type-specific receptors. *Proc. Natl. Acad. Sci. USA* **2008**, *105*, 14118–14123. [[CrossRef](#)] [[PubMed](#)]
45. Ciferri, C.; Chandramouli, S.; Donnarumma, D.; Nikitin, P.A.; Cianfrocco, M.A.; Gerrein, R.; Feire, A.L.; Barnett, S.W.; Lilja, A.E.; Rappuoli, R.; et al. Structural and biochemical studies of HCMV gH/gL/gO and pentamer reveal mutually exclusive cell entry complexes. *Proc. Natl. Acad. Sci. USA* **2015**, *112*, 1767–1772. [[CrossRef](#)] [[PubMed](#)]
46. Wang, X.; Huong, S.M.; Chiu, M.L.; Raab-Traub, N.; Huang, E.S. Epidermal growth factor receptor is a cellular receptor for human cytomegalovirus. *Nature* **2003**, *424*, 456–461. [[CrossRef](#)] [[PubMed](#)]

47. Wang, X.; Huang, D.Y.; Huong, S.M.; Huang, E.S. Integrin alphavbeta3 is a coreceptor for human cytomegalovirus. *Nat. Med.* **2005**, *11*, 515–521. [[CrossRef](#)] [[PubMed](#)]
48. Chan, G.; Nogalski, M.T.; Yurochko, A.D. Activation of EGFR on monocytes is required for human cytomegalovirus entry and mediates cellular motility. *Proc. Natl. Acad. Sci. USA* **2009**, *106*, 22369–22374. [[CrossRef](#)] [[PubMed](#)]
49. Soroceanu, L.; Akhavan, A.; Cobbs, C.S. Platelet-derived growth factor-alpha receptor activation is required for human cytomegalovirus infection. *Nature* **2008**, *455*, 391–395. [[CrossRef](#)] [[PubMed](#)]
50. Isaacson, M.K.; Feire, A.L.; Compton, T. Epidermal growth factor receptor is not required for human cytomegalovirus entry or signaling. *J. Virol.* **2007**, *81*, 6241–6247. [[CrossRef](#)] [[PubMed](#)]
51. Vanarsdall, A.L.; Ryckman, B.J.; Chase, M.C.; Johnson, D.C. Human cytomegalovirus glycoproteins gB and gH/gL mediate epithelial cell-cell fusion when expressed either in cis or in trans. *J. Virol.* **2008**, *82*, 11837–11850. [[CrossRef](#)] [[PubMed](#)]
52. Burke, H.G.; Heldwein, E.E. Crystal structure of the human cytomegalovirus glycoprotein B. *PLoS Pathog.* **2015**, *11*, e1005227. [[CrossRef](#)] [[PubMed](#)]
53. Vanarsdall, A.L.; Howard, P.W.; Wisner, T.W.; Johnson, D.C. Human cytomegalovirus gH/gL forms a stable complex with the fusion protein gB in virions. *PLoS Pathog.* **2016**, *12*, e1005564. [[CrossRef](#)] [[PubMed](#)]
54. Fouts, A.E.; Chan, P.; Stephan, J.P.; Vandlen, R.; Feierbach, B. Antibodies against the gH/gL/UL128/UL130/UL131 complex comprise the majority of the anti-cytomegalovirus (anti-CMV) neutralizing antibody response in CMV hyperimmune globulin. *J. Virol.* **2012**, *86*, 7444–7447. [[CrossRef](#)] [[PubMed](#)]
55. Cui, X.; Meza, B.P.; Adler, S.P.; McVoy, M.A. Cytomegalovirus vaccines fail to induce epithelial entry neutralizing antibodies comparable to natural infection. *Vaccine* **2008**, *26*, 5760–5766. [[CrossRef](#)] [[PubMed](#)]
56. Gerna, G.; Sarasini, A.; Patrone, M.; Percivalle, E.; Fiorina, L.; Campanini, G.; Gallina, A.; Baldanti, F.; Revello, M.G. Human cytomegalovirus serum neutralizing antibodies block virus infection of endothelial/epithelial cells, but not fibroblasts, early during primary infection. *J. Gen. Virol.* **2008**, *89*, 853–865. [[CrossRef](#)] [[PubMed](#)]
57. Buscher, N.; Paulus, C.; Nevels, M.; Tenzer, S.; Plachter, B. The proteome of human cytomegalovirus virions and dense bodies is conserved across different strains. *Med. Microbiol. Immunol.* **2015**, *204*, 285–293. [[CrossRef](#)] [[PubMed](#)]
58. Spindler, N.; Diestel, U.; Stump, J.D.; Wiegers, A.K.; Winkler, T.H.; Sticht, H.; Mach, M.; Muller, Y.A. Structural basis for the recognition of human cytomegalovirus glycoprotein B by a neutralizing human antibody. *PLoS Pathog.* **2014**, *10*, e1004377. [[CrossRef](#)] [[PubMed](#)]
59. Wen, Y.; Monroe, J.; Linton, C.; Archer, J.; Beard, C.W.; Barnett, S.W.; Palladino, G.; Mason, P.W.; Carfi, A.; Lilja, A.E. Human cytomegalovirus gH/gL/UL128/UL130/UL131a complex elicits potently neutralizing antibodies in mice. *Vaccine* **2014**, *32*, 3796–3804. [[CrossRef](#)] [[PubMed](#)]
60. Hahn, G.; Revello, M.G.; Patrone, M.; Percivalle, E.; Campanini, G.; Sarasini, A.; Wagner, M.; Gallina, A.; Milanesi, G.; Koszinowski, U.; et al. Human cytomegalovirus UL131-128 genes are indispensable for virus growth in endothelial cells and virus transfer to leukocytes. *J. Virol.* **2004**, *78*, 10023–10033. [[CrossRef](#)] [[PubMed](#)]
61. Murphy, E.; Shenk, T. Human cytomegalovirus genome. *Curr. Top. Microbiol. Immunol.* **2008**, *325*, 1–19. [[PubMed](#)]
62. Murphy, E.; Yu, D.; Grimwood, J.; Schmutz, J.; Dickson, M.; Jarvis, M.A.; Hahn, G.; Nelson, J.A.; Myers, R.M.; Shenk, T.E. Coding potential of laboratory and clinical strains of human cytomegalovirus. *Proc. Natl. Acad. Sci. USA* **2003**, *100*, 14976–14981. [[CrossRef](#)] [[PubMed](#)]
63. Fu, T.M.; Wang, D.; Freed, D.C.; Tang, A.; Li, F.; He, X.; Cole, S.; Dubey, S.; Finnefrock, A.C.; ter Meulen, J.; et al. Restoration of viral epithelial tropism improves immunogenicity in rabbits and rhesus macaques for a whole virion vaccine of human cytomegalovirus. *Vaccine* **2012**, *30*, 7469–7474. [[CrossRef](#)] [[PubMed](#)]
64. Wussow, F.; Chiuppesi, F.; Martinez, J.; Campo, J.; Johnson, E.; Flechsig, C.; Newell, M.; Tran, E.; Ortiz, J.; La Rosa, C.; et al. Human cytomegalovirus vaccine based on the envelope gH/gL pentamer complex. *PLoS Pathog.* **2014**, *10*, e1004524. [[CrossRef](#)] [[PubMed](#)]

65. Loughney, J.W.; Rustandi, R.R.; Wang, D.; Troutman, M.C.; Dick, L.W., Jr.; Li, G.; Liu, Z.; Li, F.; Freed, D.C.; Price, C.E.; et al. Soluble human cytomegalovirus gH/gL/PUL128-131 pentameric complex, but not gh/gl, inhibits viral entry to epithelial cells and presents dominant native neutralizing epitopes. *J. Boil. Chem.* **2015**. [[CrossRef](#)] [[PubMed](#)]
66. Hofmann, I.; Wen, Y.; Ciferri, C.; Schulze, A.; Fuhner, V.; Leong, M.; Gerber, A.; Gerrein, R.; Nandi, A.; Lilja, A.E.; et al. Expression of the human cytomegalovirus pentamer complex for vaccine use in a CHO system. *Biotechnol. Bioeng.* **2015**. [[CrossRef](#)] [[PubMed](#)]
67. Wussow, F.; Chiuppesi, F.; Meng, Z.; Martinez, J.; Nguyen, J.; Barry, P.A.; Diamond, D.J. Exploiting 2a peptides to elicit potent neutralizing antibodies by a multi-subunit herpesvirus glycoprotein complex. *J. Virol. Methods* **2017**, *251*, 30–37. [[CrossRef](#)] [[PubMed](#)]
68. Chiuppesi, F.; Wussow, F.; Scharf, L.; Contreras, H.; Gao, H.; Meng, Z.; Nguyen, J.; Barry, P.A.; Bjorkman, P.J.; Diamond, D.J. Comparison of homologous and heterologous prime-boost vaccine approaches using modified vaccinia ankara and soluble protein to induce neutralizing antibodies by the human cytomegalovirus pentamer complex in mice. *PLoS ONE* **2017**, *12*, e0183377. [[CrossRef](#)] [[PubMed](#)]
69. Sinzger, C.; Digel, M.; Jahn, G. Cytomegalovirus cell tropism. *Curr. Top. Microbiol. Immunol.* **2008**, *325*, 63–83. [[PubMed](#)]
70. Schleiss, M.R.; McVoy, M.A. Guinea pig cytomegalovirus (GPCMV): A model for the study of the prevention and treatment of maternal-fetal transmission. *Future Virol.* **2010**, *5*, 207–217. [[CrossRef](#)] [[PubMed](#)]
71. Powers, C.; Fruh, K. Rhesus cmv: An emerging animal model for human CMV. *Med. Microbiol. Immunol.* **2008**, *197*, 109–115. [[CrossRef](#)] [[PubMed](#)]
72. Bia, F.J.; Miller, S.A.; Lucia, H.L.; Griffith, B.P.; Tarsio, M.; Hsiung, G.D. Vaccination against transplacental cytomegalovirus transmission: Vaccine reactivation and efficacy in guinea pigs. *J. Infect. Dis.* **1984**, *149*, 355–362. [[CrossRef](#)] [[PubMed](#)]
73. Leviton, M.P.; Lacayo, J.C.; Choi, K.Y.; Hernandez-Alvarado, N.; Wey, A.; Schleiss, M.R. An attenuated cytomegalovirus vaccine with a deletion of a viral chemokine gene is protective against congenital CMV transmission in a guinea pig model. *Clin. Dev. Immunol.* **2013**, *2013*, 906948. [[CrossRef](#)] [[PubMed](#)]
74. Auerbach, M.R.; Yan, D.; Vij, R.; Hongo, J.A.; Nakamura, G.; Vernes, J.M.; Meng, Y.G.; Lein, S.; Chan, P.; Ross, J.; et al. A neutralizing anti-gH/gL monoclonal antibody is protective in the guinea pig model of congenital CMV infection. *PLoS Pathog.* **2014**, *10*, e1004060. [[CrossRef](#)] [[PubMed](#)]
75. Chatterjee, A.; Harrison, C.J.; Britt, W.J.; Bewtra, C. Modification of maternal and congenital cytomegalovirus infection by anti-glycoprotein B antibody transfer in guinea pigs. *J. Infect. Dis.* **2001**, *183*, 1547–1553. [[CrossRef](#)] [[PubMed](#)]
76. Schleiss, M.R.; Choi, K.Y.; Anderson, J.; Mash, J.G.; Wettendorff, M.; Mossman, S.; Van Damme, M. Glycoprotein b (gB) vaccines adjuvanted with AS01 or AS02 protect female guinea pigs against cytomegalovirus (CMV) viremia and offspring mortality in a cmv-challenge model. *Vaccine* **2014**, *32*, 2756–2762. [[CrossRef](#)] [[PubMed](#)]
77. McGregor, A.; Choi, K.Y.; Schleiss, M.R. Guinea pig cytomegalovirus gP84 is a functional homolog of the human cytomegalovirus (HCMV) UL84 gene that can complement for the loss of UL84 in a chimeric HCMV. *Virology* **2011**, *410*, 76–87. [[CrossRef](#)] [[PubMed](#)]
78. Coleman, S.; Choi, K.Y.; Root, M.; McGregor, A. A homolog pentameric complex dictates viral epithelial tropism, pathogenicity and congenital infection rate in guinea pig cytomegalovirus. *PLoS Pathog.* **2016**, *12*, e1005755. [[CrossRef](#)] [[PubMed](#)]
79. Wussow, F.; Yue, Y.; Martinez, J.; Deere, J.D.; Longmate, J.; Herrmann, A.; Barry, P.A.; Diamond, D.J. A vaccine based on the rhesus cytomegalovirus UL128 complex induces broadly neutralizing antibodies in rhesus macaques. *J. Virol.* **2013**, *87*, 1322–1332. [[CrossRef](#)] [[PubMed](#)]
80. Abel, K.; Martinez, J.; Yue, Y.; Lacey, S.F.; Wang, Z.; Strelow, L.; Dasgupta, A.; Li, Z.; Schmidt, K.A.; Oxford, K.L.; et al. Vaccine-induced control of viral shedding following rhesus cytomegalovirus challenge in rhesus macaques. *J. Virol.* **2011**, *85*, 2878–2890. [[CrossRef](#)] [[PubMed](#)]
81. Yue, Y.; Wang, Z.; Abel, K.; Li, J.; Strelow, L.; Mandarino, A.; Eberhardt, M.K.; Schmidt, K.A.; Diamond, D.J.; Barry, P.A. Evaluation of recombinant modified vaccinia ankara virus-based rhesus cytomegalovirus vaccines in rhesus macaques. *Med. Microbiol. Immunol.* **2008**, *197*, 117–123. [[CrossRef](#)] [[PubMed](#)]

82. Yue, Y.; Kaur, A.; Eberhardt, M.K.; Kassis, N.; Zhou, S.S.; Tarantal, A.F.; Barry, P.A. Immunogenicity and protective efficacy of DNA vaccines expressing rhesus cytomegalovirus glycoprotein B, phosphoprotein 65-2, and viral interleukin-10 in rhesus macaques. *J. Virol.* **2007**, *81*, 1095–1109. [[CrossRef](#)] [[PubMed](#)]
83. Nelson, C.S.; Cruz, D.V.; Tran, D.; Bialas, K.M.; Stamper, L.; Wu, H.; Gilbert, M.; Blair, R.; Alvarez, X.; Itell, H.; et al. Preexisting antibodies can protect against congenital cytomegalovirus infection in monkeys. *JCI Insight* **2017**. [[CrossRef](#)] [[PubMed](#)]
84. Bialas, K.M.; Tanaka, T.; Tran, D.; Varner, V.; Cisneros De La Rosa, E.; Chiuppesi, F.; Wussow, F.; Kattenhorn, L.; Macri, S.; Kunz, E.L.; et al. Maternal CD4⁺ T cells protect against severe congenital cytomegalovirus disease in a novel nonhuman primate model of placental cytomegalovirus transmission. *Proc. Natl. Acad. Sci. USA* **2015**, *112*, 13645–13650. [[CrossRef](#)] [[PubMed](#)]



© 2017 by the authors. Licensee MDPI, Basel, Switzerland. This article is an open access article distributed under the terms and conditions of the Creative Commons Attribution (CC BY) license (<http://creativecommons.org/licenses/by/4.0/>).