



Published in final edited form as:

Nat Rev Neurosci. 2017 July ; 18(7): 419–434. doi:10.1038/nrn.2017.48.

Cerebral blood flow regulation and neurovascular dysfunction in Alzheimer's disease

Kassandra Kisler*, Amy R. Nelson*, Axel Montagne*, and Berislav V. Zlokovic

Abstract

Cerebral blood flow (CBF) regulation is essential for normal brain function. The mammalian brain has evolved a unique mechanism for CBF control known as neurovascular coupling. This mechanism ensures a rapid increase in the rate of CBF and oxygen delivery to activated brain structures. The neurovascular unit composed of astrocytes, mural vascular smooth muscle cells and pericytes, and endothelia, regulates neurovascular coupling. This article examines the cellular and molecular mechanisms within the neurovascular unit contributing to CBF control, and neurovascular dysfunction in neurodegenerative disorders such as Alzheimer's disease.

Introduction

Brain receives one fifth of the cardiac output, and consumes one fifth of the body's oxygen (O_2) and glucose¹. Both, O_2 and glucose are delivered to neurons by cerebral blood flow (CBF) and transport across the blood-brain barrier (BBB)^{1–3}. Thus, brain functions depend on healthy blood vessels and cardiovascular system. If CBF stops, brain functions stop in seconds, and irreversible damage to neurons occurs in minutes⁴.

The CBF is maintained by a coordinated action of interconnected blood vessels, which in human brain form a 400-mile long vascular network¹. Within this network, cerebral arteries, arterioles and capillaries supply brain with O_2 , energy metabolites and nutrients. The cerebral venous return removes carbon dioxide (CO_2) and metabolic waste products from brain into systemic circulation for clearance by lungs, kidney and liver, respectively.

The mammalian brain has evolved a unique mechanism for regional CBF control known as neurovascular coupling or functional hyperemia⁵. This mechanism ensures a rapid increase in the rate of CBF to activated brain structures^{2,5}. Under physiological conditions, the capacity of increased CBF and O_2 delivery exceeds metabolic demand and oxygen consumption by activated brain sites providing a large gradient for oxygen diffusion to brain cells furthest from capillaries^{2,6,7}. Different cell types within the neurovascular unit (NVU) including astrocytes, mural cells, such as vascular smooth muscle cells (VSMCs) and pericytes, and endothelial cells, contribute to neurovascular coupling^{1–3,5}. The NVU cellular composition differs along the vascular tree (Figure 1). However, within the NVU, mural

Address correspondence: Berislav V. Zlokovic, M.D., Ph.D., Zilkha Neurogenetic Institute, 1501 San Pablo Street, Los Angeles, CA 90089, Phone: 323.442.2722 / Fax: 323.666.2184, zlokovic@usc.edu.

*These authors contributed equally to this work

cells of the vessel wall are the ones with contractile properties that allow direct control of the vessel diameter and blood flow.

Because of the tight interactions between CBF and neuronal activity, the CBF provides important insights into how the brain works. This forms the basis for functional imaging to evaluate the brain's functional networks^{8,9} and responses to different tasks^{10–12}. Disrupted functional connectivity and neurovascular uncoupling resulting from a mismatch between CBF, O₂ delivery and neuronal activity, are found in the early stages of many neurological disorders including Alzheimer's disease (AD), amyotrophic lateral sclerosis (ALS) and stroke^{1,3,5}. Therefore, understanding the cellular and molecular mechanisms underlying physiological and/or pathophysiological CBF responses is critical for understanding brain functions in health and disease.

In this Review, we discuss CBF regulation by the NVU, and neurovascular dysfunction in neurodegenerative disorders with a focus on AD, because neurovascular deficits are well documented in this disorder compared to other neurodegenerative diseases. First, we examine the role of astrocytes, mural cells, and endothelia in neurovascular coupling, and their interactions with neurons, in the arterial, arteriolar and capillary segments of brain microcirculation. Next, we examine cell-signaling pathways mediating dilation and constriction of cerebral blood vessels resulting in CBF increases and reductions, respectively. Finally, the article considers the link between neurovascular dysfunction and neurodegeneration in AD.

Arterial and arteriolar component

The vast network of arteries, arterioles, and capillaries deliver O₂ and nutrients to the brain in a highly regulated manner. The arteries that feed the brain split off the pial arteries that run along the surface of the brain, diving down into the parenchyma, narrowing and branching into arterioles and capillaries. As the size and level of branching change, so too does the cellular composition of the NVU (Figure 1). In this section, we will focus on CBF regulation by arteries and arterioles, role of VSMCs in regulating arteriolar and arterial diameter, and signal transduction pathways within the NVU regulating VSMC tone.

Control of arterial and arteriolar blood flow by VSMCs

Where arteries begin their dive into the brain parenchyma, the NVU is composed of endothelial cells making up the blood vessels surrounded by one to three layers of VSMCs, astrocyte endfeet forming glia limitans that separates cerebrospinal fluid (CSF)-containing Virchow-Robin spaces from brain interstitial fluid (ISF), and neuronal afferent projections^{13–15}. In the brain parenchyma, the arteries narrow into arterioles with a single layer of VSMCs and closer apposition of astrocyte endfeet (Figure 1). Arteries and arterioles ensure blood delivery to the brain at a fairly uniform pressure, such that the pulsatile effect of heartbeat is less pronounced in the downstream cerebral microvessels.

During functional hyperemia, arterioles dilate and this dilation propagates at a high-speed in a retrograde direction to upstream arteries, including branches of pial arteries^{12,14,16–19}. Studies in rats have shown that dilation may extend more than 1 mm away from the center of

the responding brain region¹². In addition to regulating CBF delivery to the activated brain sites, studies in rats²⁰ and mice²¹ have demonstrated that arterioles deliver the majority of O₂ during the resting state, which is considered to provide a safe margin of O₂ supply to cerebral tissue²². Recent studies in pericyte-deficient mice indicated, however, that capillaries and capillary pericytes also play a role in O₂ delivery to the brain²³. More work is needed to determine the exact contributions of arteriolar versus capillary O₂ delivery under physiological and pathophysiological conditions, particularly in regards to the timing of arteriolar and capillary dilation in response to neuronal stimulus, which remains a topic of debate^{12,3,19,23–27}, as discussed below.

The key signaling pathways regulating arteriolar and arterial relaxation and contraction are illustrated in Figure 2, and described in detail below.

Astrocyte-mediated regulation of VSMCs tone

Astrocytes contribute to the regulation of neural circuit formation²⁸, synapse formation²⁹, neuronal calcium oscillation³⁰, plasticity and memory³¹, and inflammation in neurodegenerative diseases³². However, whether astrocytes and astrocytic calcium, Ca²⁺, play a role in the regulation of arteriolar tone, remains a controversial topic as examined below.

Earlier reports were not conclusive as to whether an increase in the intracellular Ca²⁺ in astrocytes leads to arteriolar constriction or dilation. Photolysis experiments with caged Ca²⁺ in astrocytes have shown that an increase in the intracellular Ca²⁺, [Ca²⁺]_i, in the astrocyte endfeet precedes arteriolar constriction in rat and mouse brain slices, which is mediated via the phospholipase A2 (PLA2)-arachidonic acid (AA) pathway in astrocytes followed by free diffusion of AA to VSMCs and conversion into 20-hydroxyeicosatetraenoic acid (20-HETE) via cytochrome p450 (p450) causing VSMCs depolarization and contraction³³ (Figure 2). Using similar rat brain slices another study, however, found exactly the opposite -- that an increase in [Ca²⁺]_i in astrocytes leads to arteriolar dilation, not constriction³⁴. This study has shown that dilation and VSMC relaxation is mediated by metabotropic glutamate receptors (mGluR) and cyclooxygenase (Cox) product prostaglandin E2 (PGE2)³⁴ (Figure 2). The discrepancy between the two studies has been reconciled in part by acknowledging different experimental conditions, such as that slices in the earlier study were preincubated with N^G-nitro-L-arginine methyl ester (L-NAME) to block nitric oxide (NO) formation and precontract blood vessels³⁴, which has been shown to abolish arteriolar constriction by mGluR agonists leading to a moderate vasodilation³³.

The first *in vivo* study imaging the activity of astrocytes labeled with the Ca²⁺ indicator rhod-2 in the somatosensory cortex of adult mice found that photolysis of caged Ca²⁺ in astrocytic endfeet ensheathing small pial and penetrating arteries leads to vasodilation, which is blocked by Cox1 inhibitors³⁵. This study confirmed the role of PLA2-AA pathway in astrocytes and showed that astrocytes *in vivo* can metabolize AA to epoxyeicosatetraenoic acids (EETs) or PGE₂ via cyp450 and Cox1, respectively³⁵. Subsequently, EETs released from astrocytes activate large-conductance calcium-activated potassium (BK_{Ca}) channels in VSMCs, whereas PGE₂ acts through cyclic adenosine monophosphate (cAMP), both leading to hyperpolarization and VSMCs relaxation³⁶.

A recent study using genetically encoded Ca^{2+} sensor in astrocytes also demonstrated that physiological activation of neuron terminals triggers $[\text{Ca}^{2+}]_i$ increases in astrocyte processes increasing local red blood cell (RBC) flow in brain capillaries³⁷. Although suggestive of a major role of capillaries in functional hyperemia³⁷, this study did not directly show whether astrocytic Ca^{2+} regulates neurovascular coupling to capillary pericytes and/or VSMCs in arterioles, or to both. Another recent *in vivo* study found that astrocytic Ca^{2+} does not regulate arteriolar responses²⁶.

Several studies disputed the role of astrocytes and astrocytic $[\text{Ca}^{2+}]_i$ in regulation of arteriolar responses. For example, stimulus-induced arteriolar dilation persists in inositol 1,4,5-triphosphate (IP3) type-2 receptor (R2) knock-out (KO) mice, in which the primary mechanism of astrocytic $[\text{Ca}^{2+}]_i$ increase - the release of Ca^{2+} from intracellular stores following activation of an IP3-dependent pathway³⁸ (Figure 2) - is lacking³⁹. Additionally, *in vivo* astrocytic Ca^{2+} increase in response to sensory stimulus was delayed relative to arteriolar dilation, suggesting that astrocytes do not play a role in arteriolar responses via a Ca^{2+} -dependent mechanism³⁹. Others have demonstrated that G-protein-coupled receptors (GPCRs)-IP3R-dependent Ca^{2+} signal in astrocytes does not mediate arteriolar neurovascular coupling in mice implying that mGluR and purinergic receptors in astrocytes are not involved in regulation of arteriolar dilation⁴⁰. Additionally, mGluR3, the only mGluR expressed in adult mouse astrocytes, did not generate Ca^{2+} elevations in response to agonists, suggesting glutamatergic signaling per se is insufficient to trigger astrocytic Ca^{2+} signaling⁴¹. These recent studies³⁹⁻⁴¹ questioned whether mGluR³³ and purinergic receptors⁴² in astrocytes can sense glutamate and adenosine triphosphate (ATP), respectively, contributing to regulation of the arteriolar tone. More recent findings confirmed that astrocytes do not mediate neurovascular coupling to arterioles, and that dilation of arterioles depends on N-methyl-D-aspartate receptor (NMDA) activation and Ca^{2+} -dependent generation of NO by interneurons²⁶.

The non-selective transient receptor potential vanilloid channel 4 (TRPV4) have been shown to stimulate Ca^{2+} -induced Ca^{2+} release in astrocytic end feet, which amplifies neurovascular coupling^{43,44} by activating the BK_{Ca} channels releasing K^+ into the extracellular space³⁶. The moderate increase in extracellular $[\text{K}^+]$ activates inward rectifier potassium (K_{IR}) channels in VSMCs resulting in hyperpolarization and relaxation, as indicated by *ex vivo* and *in vivo* studies⁴⁵. Interestingly, pathologically high levels of the extracellular $[\text{K}^+]$, as seen during cortical spreading depolarization, activate voltage-gated calcium channels (VGCCs) in VSMCs depolarizing the cells, which results in VSMCs contraction⁴⁶.

The metabolic state of the tissue influences both arteriolar dilation and constriction⁴⁷. Under normoxic pO_2 conditions (normal 20% O_2), lactate levels in brain slices are elevated compared to hyperoxic pO_2 conditions (high 95% O_2), which inhibits PGE_2 reuptake by prostaglandin transporter in astrocytes leading to elevated PGE_2 levels in the extracellular space causing VSMCs relaxation⁴⁷. In high pO_2 , however, the AA is converted in VSMCs to 20-HETE leading to arteriolar constriction⁴⁷ (Figure 2). Although this O_2 modulatory effect has been shown using *ex vivo* preparations of brain slices and retina explants^{47,48}, it has not been confirmed in blood flow studies in hyperoxic animals⁴⁸, leaving open to question whether pO_2 has a role in blood flow regulation *in vivo*. In contrast, the effects of lactate on

modifying vessel dilation in slices⁴⁷ have been translated *in vivo* as demonstrated in miniature pig retina⁴⁹ and guinea pig cochlear organ⁵⁰, both showing vasodilation after systemic or local lactate administration.

The molecular pathways in astrocytes that generate signals to VSMCs as suggested by some initial studies, but not reproduced by more recent studies, are illustrated in Figure 2. Whether astrocytes are involved in neurovascular coupling to arterioles and arteries remains controversial topic that merits further investigation. Some questions to be addressed are: Can astrocytes contribute to neurovascular coupling by modifying neuronal synaptic activity? Do neurons differentially signal to astrocytes on arterioles and capillaries? Do different types of astrocytes communicate with VSMCs and pericytes?

Direct neuron-mediated regulation of VSMCs tone

Early studies have shown that activation of neuronal NMDA receptors in rabbits leads to concentration-dependent NO-mediated dilatation of pial arterioles⁵¹. Subsequent studies have demonstrated that microperfusion of NMDA in the striatum of newborn sheep⁵² or functional stimulation of the somatosensory cortex of rats⁵³ both lead to CBF increases through NO production, establishing neuronal NO as a major regulator of the CBF⁵. Activation of purinergic P2XR⁵⁴ and P2YR⁵⁵ ATP-gated channels in VSMCs has been shown to lead to an increase in $[Ca^{2+}]_i$ causing VSMCs contraction. It has been suggested that ATP from both neurons⁵⁶ and astrocytes⁵⁷ can activate VSMCs purinergic receptors. Additionally, adenosine released from neurons⁵⁸ is a potent endothelium-independent vasodilator that acts as a direct VSMCs relaxant^{2,5,23}.

Neurotransmitters including vasoactive intestinal polypeptide, dopamine, substance P, serotonin, gamma-aminobutyric acid, noradrenaline, neuropeptide Y, somatostatin and acetylcholine have all been reported to mediate vascular changes^{5,12}. Different types of inter-neurons have been suggested to control local CBF responses possibly through astrocytes or pericytes^{10,13}. In addition to the role of cholinergic afferents modulating CBF via acetylcholine release¹³, studies in mice⁵⁹ and neonatal rats⁶⁰ have demonstrated that noradrenaline release from locus coeruleus afferents generates vasoconstriction. Recent studies using a combination of optogenetic stimulation and multiphoton imaging *in vivo* in mice, have shown both excitatory and inhibitory neurons can signal arteriolar dilation, but only inhibitory neurons releasing neuropeptide Y were able to cause arteriolar constriction⁶¹. Currently, more information is needed to determine the action and the exact function of each of the neurotransmitter systems, their afferents and effects on the cells that make up the NVU.

Endothelium-mediated regulation of VSMCs tone

Endothelial cells modulate vascular tone by retrograde propagation of vasodilation^{16,17}. Endothelial hyperpolarization travels distances > 1 mm with limited attenuation, which leads to self-dilation via myoendothelial coupling to VSMCs through myoendothelial gap junctions¹⁷ or via a putative endothelial-derived hyperpolarizing factor⁶². Additionally, endothelial release of NO leads to VSMCs relaxation and arteriolar dilation¹². Shear stress on red blood cells (RBC) passing through the vessel can release ATP, which interacts with

P2XR and P2YR on endothelial cells resulting in generation of AA, EETs and cAMP^{17,63}. cAMP generates prostacyclin (PGI₂), which acts on VSMCs much like PGE₂ causing relaxation¹².

Mechanical shear stress can also cause direct generation of AA and/or NO via endothelial nitric oxide synthase (eNOS) in endothelial cells to initiate the pathways described above^{2,17}. Endothelial receptor targets besides acetylcholine and ATP include bradykinin, adenosine diphosphate, uridine triphosphate and adenosine¹². Receptor binding activates phospholipase C (PLC) or PLA₂, which through diacyl-glycerol (DAG) produces EETs and PGI₂ that both contribute to VSMCs relaxation via cAMP¹² (Figure 2).

While these and many additional studies not included here have allowed us to piece together many aspects of endothelial-mediated arteriole regulatory mechanisms, much of this work comes from *in vitro* or *ex vivo* studies, and studies from peripheral tissues. More comprehensive *in vivo* studies in brain are needed to confirm these mechanisms in the functional regulation of brain arteriole vasculature.

As will be discussed later, the neurovascular coupling, VSMC contractility, and endothelial-dependent and independent mechanisms of arteriolar dilation become dysfunctional in models of neurodegenerative disorders including AD, and in individuals with mild cognitive impairment (MCI) and early stage AD.

Capillary component

Capillaries, the smallest vessels in the brain, branch off of the arterioles and form a rich microvascular network with the largest surface area of 120 cm² per gram of brain available for transport exchanges of molecules between blood and brain across the endothelium of the BBB¹. The BBB is formed by a continuous monolayer of endothelial cells connected by tight junctions, which limits entry of large macromolecules, cells and pathogens into the brain. The BBB allows rapid diffusion of O₂ from blood-to-brain and of CO₂ from brain-to-blood according to their concentration gradients, and regulates transport of energy metabolites and nutrients into the brain, and clearance of metabolic end products from brain to venous circulation via numerous specialized carrier-mediated and receptor-mediated transport systems in the endothelium^{15,64}.

Brain capillaries are covered by pericytes, which share the basement membrane with endothelial cells¹⁵ (Figure 1). Pericytes stretch their processes along and around capillaries, pre-capillary arterioles and post-capillary venules with more longitudinal processes in the middle of capillary bed, more circumferential processes at the arteriole end, and more stellate morphology at the venule end of capillaries⁶⁵⁻⁶⁷. Pericytes and endothelial cells make direct interdigitated or “peg-socket”-like contacts where cytoplasmic protrusions (pegs) of one cell type insert into pockets in the opposing cell membrane (socket) of the other cell type^{68,69}. Although it is not clear which type of junctional proteins mediate *in vivo* interactions between pericytes and endothelial cells, immunostaining studies suggested involvement of N-cadherin during brain angiogenesis⁷⁰. Several *in vitro* culture studies suggested that pericytes express connexin 43 (Cx43)⁷¹. Expression of Cx43 and Cx37 in

pericytes has been confirmed by single-cell RNA-seq study of different cell types in the mouse cortex and hippocampus⁷². Whether these connexins mediate pericyte-endothelial, pericyte-pericyte and/or pericyte-astrocyte interactions remains, however, to be determined by future studies.

Pericytes regulate angiogenesis during brain development, formation and maintenance of the BBB, clearance of toxins, and neuroinflammatory and stem cells responses, as recently reviewed⁷³. Studies using multiple models have suggested that pericytes regulate CBF and capillary vascular tone^{24,66,74–78}. Below, we examine CBF control by capillaries, role of pericytes in regulating capillary diameter, and signaling pathways regulating pericyte tone.

Control of capillary blood flow by pericytes

The prevailing view is that pericytes contribute to regulation of capillary diameter and CBF^{23,24,26,27,65,66,74–78}. This view has been challenged, however, by some recent studies^{25,79}. What defines a pericyte and pericyte contractility is discussed in Box 1.

Several studies have shown Ca²⁺-dependent contraction of pericytes in response to neurotransmitters (e.g., norepinephrine), electrical stimulation or neuronal activity^{23,24,26,27,74,77,78,80,81}. Recent studies demonstrated that astrocytes mediate neurovascular coupling to capillary pericytes but not to arterioles²⁶, and that glial cells in the retina, called Muller cells, also regulate capillary, but not arteriolar diameter in response to light stimulation of neurons²⁷. Pericyte degeneration has been shown to lead to neurovascular uncoupling and reduced oxygen supply to brain, suggesting diminished hemodynamic responses in a pericyte-deficient transgenic model²³. Optogenetic experiments indicated initially that pericytes do not contribute to CBF regulation in neural-glial antigen 2-driven *NG2-cre* channelrhodopsin (ChR2) mice²⁵, which has not been confirmed by another optogenetic study in platelet-derived growth factor receptor beta-driven *Pdgfrb-cre* ChR2 mice demonstrating that strong 2-photon stimulation leads to pericyte contraction, constriction of capillary lumens and inhibition of RBC flow *in vivo* (D.A. Hartmann, R.I. Grant and A.Y. Shih, Medical University of South Carolina; personal communication). Whether the differences seen in optogenetic studies are model-dependent and/or light source and duration-dependent, and whether different Cre drivers lead to differential ChR2 expression in different pericyte subpopulations, remains to be examined by future studies.

Recent *in vivo* studies in mice found that hindlimb stimulation (10s)^{23,26} or whisker-pad stimulation (15s)²⁴ resulted in capillary dilation ahead of arterioles; this was correlated with pericyte coverage and could be caused by isotonic pericyte relaxation. A shorter stimulation time (2s) produced, however, RBC flow increase without vessel dilation⁷⁹, and could result from isometric relaxation of pericytes. An earlier study demonstrated that capillaries in the activated rat olfactory glomerulus, but not capillaries adjacent to this glomerulus, actively dilate in response to odor stimulation⁸². As arterioles do not form a single glomerulus-specific network, their contribution to odor response has not been determined in this model⁸². Dilations and constrictions of cerebral capillaries have been also observed in rat cortex after forepaw stimulation⁸³ and in response to hypercapnia⁸⁴. During brain ischemia, pericytes contract and limit CBF by constricting capillaries and trapping blood cells in their

lumen, and later die, as shown in a murine model^{85,86}. Pericyte contraction and cell death in response to ischemia has been confirmed *ex vivo* in brain and retina explants^{24,77}.

While a growing body of evidence supports the role of pericytes in CBF regulation, there is also a growing need to better define pericytes, particularly at the molecular level (Box 1). Future studies should also determine whether all or only some pericyte subpopulations regulate CBF dynamics and/or are more susceptible to ischemic and/or hypoxic insults.

Signaling in astrocytes and pericytes regulating capillary tone

Recent studies have demonstrated that astrocytes mediate neurovascular signaling to capillary pericytes, which involves a rise of $[Ca^{2+}]_i$ in astrocytes not by release from stores but by entry through ATP-gated channel - purinergic receptor P2XR, and that Ca^{2+} generates AA via phospholipase D2 and diacylglycerol kinase rather than PLA2²⁶ (Figure 3). The role of a Ca^{2+} -dependent glial cell signaling mechanism in regulating capillary but not arteriole diameter has also been shown in the retina *ex vivo* and *in vivo* upon physiological light stimulation²⁷.

Pericytes respond to the AA metabolites PGE₂ and 20-HETE to generate relaxation or contraction, respectively, but unlike VSMCs, they do not respond to EETs^{24,77}. Pericytes express both P2X⁸⁷ and P2Y⁸⁸ purinergic receptors, which when activated by ATP lead to an increase in Ca^{2+} , depolarization and pericyte contraction. Activation of large- (BK_{Ca}) and small- (K_{Ca}) conductance potassium channels or ATP-sensitive potassium (K_{ATP}) channels results in potassium efflux and hyperpolarization of pericytes, decreasing Ca^{2+} entry through VGCCs⁸⁹.

Adenosine that is normally released from neurons and leads to VSMCs relaxation also binds A1 and A2 receptors on pericytes, and activates K_{ATP} channels releasing potassium from the cell leading to hyperpolarization and relaxation⁸⁹. Glutamate-evoked capillary dilation was reduced by blocking NO synthase with L-NG-nitroarginine in brain slices suggesting a role for NO in pericyte relaxation and capillary dilation that was likely mediated by inhibiting the AA conversion to 20-HETE, which blocks depolarization and contraction²⁴. It is unclear if pO₂ plays as significant a role in modulating relaxation versus contraction at the capillary level as observed in arterioles²⁴.

Several endothelial-derived vasoactive mediators can also regulate pericyte contraction and relaxation likely via similar mechanisms as in VSMCs⁸⁹ (Figure 3). A number of questions regarding pericyte signaling *in vivo* remain, however, to be addressed by future studies including the proposed regulatory neurotransmitter and endothelial signaling pathways. As discussed below, pericytes degenerate in several neurodegenerative disorders including AD and ALS, and are injured during early stages of aging-MCI-AD spectrum. Thus, it is possible that their loss contributes to vascular dysregulation observed in neurological diseases associated with early neurovascular dysfunction as suggested by recent studies in pericyte-deficient mice²³.

Alzheimer's vascular dysfunction

In addition to amyloid- β (A β), tau pathology and neuron loss, AD is associated with early neurovascular dysfunction, which contributes to disease pathogenesis, as indicated by recent epidemiological, clinical, pathological and experimental studies^{1,3,5,90–95}. Moreover, small vessel disease of the brain has been estimated to contribute wholly or partially to approximately 40% of all dementias worldwide including AD^{3,96–99}.

Multiple risk factors influence AD pathogenesis including genetics, vascular, environment, and lifestyle (Figure 4). According to the *two-hit* vascular hypothesis of AD^{1,15}, A β -independent (*hit 1*) and A β -dependent (*hit 2*) mechanisms interact and converge on blood vessels leading independently and/or synergistically to neuronal and synaptic dysfunction, neurodegeneration, and cognitive impairment (Figure 4). Besides direct negative effects of CBF reductions and dysregulation, and BBB breakdown and dysfunction on neuronal function and accumulation of A β in the brain (*hit 1*), A β -mediated vascular dysfunction (*hit 2*) could also be an early event in AD pathogenesis^{5,100}. Notably, function of each of the NVU cell types (*e.g.*, VSMCs, pericytes, astrocytes, endothelia) regulating CBF and BBB integrity is affected during different stages of AD by either A β -independent or A β -dependent mechanisms, and/or both^{3,5,73,92,100,101}, contributing to dementia. Although reduced to two major disease pathways, the *two-hit* hypothesis considers multiple factors influencing AD.

Here, we will review neurovascular deficits during AD pathogenesis, focusing on CBF changes. First, we examine findings in animal models, and next neurovascular dysfunction in humans in relation to cognitive impairment and AD. Many of the molecular and cellular mechanisms underlying arterial, arteriolar and capillary components of CBF regulation that we discussed in the first part of this review have not been studied, however, in animal models of AD, or in humans at risk or diagnosed with AD. Therefore, in the sections below we will also attempt to identify some of the outstanding mechanistic gaps that should be addressed by future studies.

A β -independent vascular changes in animal models

Pericyte-deficient transgenic models with undetectable A β pathology develop early CBF reductions in gray matter¹⁰² and aberrant CBF responses in the presence of initially normal neuronal activity, endothelial-dependent and independent vasodilation, and astrocyte numbers and coverage of the blood vessels²³. Pericyte degeneration also leads to early reductions in O₂ supply to activated brain²³. These vascular changes develop independently of A β , and precede neuronal dysfunction and neurodegeneration that develop months later. These findings indicate that pericytes could be an important target in neurological disorders associated with pericyte loss and neurovascular dysfunction. This includes AD^{91,103–108}, ALS^{109,110} and stroke^{24,85,86,111}. It is also known that A β kills pericytes^{106,112}, which in turn might accelerate neurovascular dysfunction in AD transgenic models overexpressing amyloid precursor protein (*APP*)^{105,106} and/or AD patients^{3,5,100}. The relative contributions of A β -independent pericyte loss as shown in the ischemic brain^{24,85,86,111} and A β -dependent pericyte degeneration¹⁰⁶ remains an important topic for future research of CBF dysregulation in AD.

Hypertension (HTN) is a risk factor for AD. A number of studies have shown that HTN alters functional hyperemia and endothelial function¹¹³. Angiotensin II (ANGII)-induced hypertension in rodents attenuates CBF responses to whisker stimulation¹¹⁴ due to diminished endothelium-dependent vasodilation to acetylcholine¹¹⁵. Interestingly, cerebrovascular effects of ANGII are independent on the elevation of blood pressure^{116–118}. Alterations in cerebrovascular responses to endothelium-dependent vasodilators have also been shown in rodent models of chronic HTN^{114,116,119}. Relatively little is known, however, about the role of other NVU cell types in the pathogenesis of HTN, and in relation to HTN role in AD pathogenesis. For example, age-dependent loss of pericytes has been shown in ANGII model of HTN¹²⁰, but the effects on neurovascular coupling and the underlying molecular and cellular mechanisms remain largely unexplored.

Studies in transgenic *Notch3*^{R169C} mouse model of cerebral autosomal dominant arteriopathy with subcortical infarcts and leukoencephalopathy (CADASIL) expressing the pathogenic *Notch3* mutation in VSMCs and pericytes, as in human CADASIL, have shown that both mural cell types accumulate toxic *Notch3* aggregates and degenerate^{121–123}. Consistent with loss of mural cells, these mice develop impaired CBF autoregulation¹²⁴. The exact contributions of VSMCs versus pericytes to CBF dysregulation and possible downstream molecular targets remain, however, presently unknown.

CBF reductions and vascular dysfunction were also found in apolipoprotein E4 (*APOE4*) transgenic mice with targeted replacement of murine *APOE* with human *APOE4* gene^{125–127}, the major genetic risk factor for AD. It has been also shown that vascular phenotype in *APOE4* mice precedes neuronal and synaptic dysfunction¹²⁵. Whether the same cyclophilin A pathway in pericytes mediating the BBB breakdown in *APOE4* mice¹²⁵ is also involved in CBF dysregulation is not clear at present.

Together, these studies suggest that CBF dysregulation develops early in experimental models of pericyte, VSMCs or endothelial dysfunction, which can lead to neuronal dysfunction and loss independently of A β . Little is known, however, about signaling pathways in the NVU that lead to CBF dysregulation in these models. More work is needed to uncover the mechanistic links between dysregulated CBF in the A β -independent vascular models and astrocyte-pericyte signaling^{26,27} and the roles of astrocytic Ca²⁺^{26,27} and neuronal and endothelial NO⁵.

A β -dependent vascular changes in animal models

Early studies in the isolated rat aorta have shown that A β exerts vasoconstrictive properties¹²⁸. The follow-up *in vivo* findings in transgenic mice expressing A β precursor protein (*APP*) Swedish mutation indicated that A β attenuates acetylcholine-mediated endothelium-dependent vasodilation¹²⁹. Studies in young *Tg2576* mice expressing *APP* Swedish mutation demonstrated reduced cerebrovascular reactivity to endothelium-dependent vasodilators (*e.g.*, acetylcholine, bradykinin, calcium ionophore A23187) and increased response to vasoconstrictors acting directly on VSMCs (*e.g.*, thromboxane A2 analogue U46619)¹³⁰, as well as altered neurovascular coupling¹³¹. Collectively, these studies suggest that accumulation of low levels soluble A β prior to A β deposition leads to a global impairment of vascular responses. A β mediated generation of ET-1 through the

receptor for advanced glycation end products (RAGE) in brain endothelium that binds A β has been also shown to lead to CBF reductions in *Tg2576* mice^{132,133}.

Additional investigations indicated that NADPH-oxidase is a key source of the radicals mediating neurovascular dysfunction caused by A β ¹³⁴, which causes endothelial dysfunction by activating transient receptor potential melastatin-2 channels in endothelial cells via poly(ADP)-ribose polymerase pathway¹³⁵. CD36, another scavenger receptor that binds A β , also leads to A β -mediated oxidative stress in cerebral blood vessels causing diminished neurovascular coupling¹³⁶. Interestingly, RAGE regulates CD36 expression¹³⁶. The exact relationship between CD36 and RAGE in A β -induced CBF dysregulation^{132,133}, however, awaits further exploration.

Consistent with these studies, findings in transgenic mice with vasculotropic Dutch and Iowa A β mutations crossed with the Swedish *APP* mutants, *i.e.*, *TgSwDI APP* mice, and in *Tg2576 APP* mice have shown that arterial VSMCs exhibit a greatly reduced ability to clear A β , which leads to A β accumulation in the vessel wall causing cerebral amyloid angiopathy (CAA) and impaired vascular reactivity¹³⁷. This has been recently confirmed in older *APP* mice carrying Swedish and Indiana mutations (*i.e.*, *hAPPJ20*)¹³⁸.

Similar to AD patients, *TgSwDI APP* mice and *Tg2576 APP* mice express low levels of serum response factor (SRF) and myocardin (MYCD), the two transcription factors that control VSMCs differentiation, which leads to elevated expression of several SRF-MYCD-directed VSMCs contractile proteins including SMA, calponin and myosin heavy chain¹³⁹. This in turn leads to a hypercontractile VSMCs phenotype, and diminished endothelium-dependent and endothelium-independent relaxation causing attenuated CBF responses¹³⁹. Additionally, genes that regulate Ca²⁺ homeostasis, such as myosin light-chain kinase, calsequestrin 1 and sarcoplasmic/endoplasmic reticulum calcium ATPase 2 are also elevated in AD VSMCs contributing to VSMCs hypercontractile phenotype¹³⁹. Although, SRF-MYCD-dependent regulation of VSMCs contractile proteins and Ca²⁺ homeostasis genes is A β -independent¹³⁹ these changes likely act synergistically with A β to accelerate CBF reductions in AD models, and possibly in AD. Finally, A β leads to pericyte cell death in human cultured pericytes^{106,112} and *Tg2576 APP* mice^{105,106}, which might contribute to CBF dysregulation.

In summary, a body of evidence suggests that A β has vasoactive and vasculotoxic effects on cerebral blood vessels affecting different cellular components of the NVU that regulate CBF. Therefore, preventing A β accumulation will eliminate A β -dependent effects on CBF dysregulation. The question persists, whether removing A β will have the same beneficial effects on already damaged vessels. Recent studies have suggested, however, that counteracting the deleterious effects of A β after vascular depositions in aged *TgSwDI APP* mice is not effective in reversing the neurovascular dysfunction owing to VSMCs damage caused by aging and massive A β deposition¹⁰⁵. Importantly, the BBB dysfunction of A β clearance receptors and reduced CBF both promote A β accumulation in the brain and vessel wall (*hit 1*) enhancing A β pathogenic effects (Figure 4).

Combined A β and vascular models

Here, we briefly illustrate with a few examples interaction of A β with some factors negatively affecting cerebral circulation. More detailed discussion on this topic could be found elsewhere^{97,98}.

Regarding HTN, it has been shown that ANGII-induced HTN in mice worsens A β -induced neurovascular dysfunction and promotes β -secretase activity increasing amyloidogenic APP processing, which may contribute to the pathogenic interaction between HTN and AD¹¹⁵. ANGII-induced HTN also impairs CBF, cognition and functional connectivity in *APP/PS1* mice and decreases functional connectivity in wild type mice¹⁴⁰, suggesting another possible mechanism for a link between midlife HTN, decreased cerebral hemodynamics and connectivity.

Cerebral hypoperfusion accelerates CAA in *TgSwDI APP* mice¹⁴¹. CAA, on the other hand, leads to a more severe cerebrovascular dysfunction than A β alone causing intra- and post-ischemic CBF deficits, which exacerbates cerebral infarction, as shown in *Tg2576* mice¹⁴².

Elevated levels of homocysteine in plasma, hyperhomocysteinemia (HHcy), have been shown to impair action and synthesis of endothelial NO leading to CBF dysregulation¹⁴³. Induction of HHcy in wild-type mice models vascular dementia by inducing cerebral microhemorrhages and neuroinflammation¹⁴⁴. Moreover, HHcy shifts A β deposition to the vasculature and exacerbates memory impairment in *APP/PS1* mice¹⁴⁵.

Cerebrovascular reactivity in Alzheimer's disease

Individuals with early stage, probable AD compared to cognitively normal controls have impaired cerebrovascular reactivity in response to hypercapnia induced by CO₂ inhalation and display large CBF fluctuations after repeated sit-stands with no changes in the systemic arterial blood fluctuations¹⁴⁶, suggesting that local CBF dysregulation develops early in AD in the presence of intact cardiovascular control of the arterial blood pressure.

Recent studies have shown that individuals carrying *APOE4* gene, the major genetic risk factor for AD, compared to non-carriers develop early impaired cerebrovascular reactivity to a memory task and during CO₂ inhalation¹⁴⁷. Using CO₂ inhalation challenge, a larger study in cognitively normal *APOE4* carriers compared to *APOE4* non-carriers confirmed impaired CBF responses, suggesting that early CBF dysregulation contributes to cognitive impairment in *APOE4* carriers¹⁴⁸. Using the CO₂ inhalation challenge and blood-oxygen level dependent (BOLD)-fMRI, another study found that cerebrovascular deficits in AD could be associated with amyloid deposits, as detected by positron emission tomography (PET) with ¹¹C-Pittsburg compound B¹⁴⁹.

Impaired cerebrovascular reactivity indicates damage to the cerebral blood vessels and CBF regulatory mechanisms, which may result in CBF reductions and/or neurovascular uncoupling, as discussed below. The molecular and cellular mechanisms involved remain, however, mostly unknown at present.

Cerebral blood flow reductions in Alzheimer's disease

An earlier large population-based study showed that diminished CBF velocity precedes cognitive decline and hippocampal atrophy¹⁵⁰. Additionally, individuals exhibiting greater CBF velocity had larger hippocampal and amygdalar volumes¹⁵⁰.

Early studies in individuals with mild cognitive impairment (MCI) with memory loss (*e.g.*, amnesic MCI) have shown CBF reductions^{151,152} in the posterior cingulate gyrus and precuneus using single positron emission tomography (SPECT), that is also confirmed in individuals with probable AD¹⁵³. As the posterior cingulate gyrus and precuneus participate early in the pathophysiology of disrupted functional connectivity in AD¹⁵⁴, it is possible that initial vascular dysregulation may precede and/or trigger disrupted brain connectivity in these regions. Interestingly, a decrease in regional CBF in the posterior cingulate gyrus and precuneus in early stage AD occurs prior to a loss of gray matter volume^{153,155} suggesting that CBF reductions precede brain atrophy. Consistent with lower CBF values, and findings demonstrating that glucose transport into the brain depends on the CBF^{101,156}, the same brain regions showing diminished CBF showed diminished brain glucose uptake in early stages of AD, as detected by ¹⁸F-fluorodeoxyglucose (FDG)-PET¹⁵⁷.

Reductions in regional CBF in the bilateral parietal areas and the precuneus preceded conversion of MCI to AD^{158,159}. Additionally, CBF decline in the frontal, parietal, and temporal cortices preceded the onset of cognitive decline in non-demented *APOE4* carriers compared to *APOE4* non-carriers¹⁶⁰. Consistent with these findings, low glucose uptake by the posterior cingulate, parietal, temporal, and prefrontal cortex was found in young *APOE4* carriers compared to *APOE4* non-carriers¹⁶¹. More recent *in vivo* assessment of regional CBF via non-invasive arterial spin labeling (ASL)-MRI, relying on magnetic labeling of arterial blood water, and simultaneous ¹⁸F-FDG-PET acquisition confirmed a high correlation between regional brain hypoperfusion and impaired glucose uptake by the brain of AD individuals compared to controls¹⁶². Collectively, these findings demonstrate that regional CBF reductions and diminished regional glucose delivery are amongst the earliest functional changes preceding cognitive decline in AD.

A recent large study in healthy controls and MCI and AD patients demonstrated that CBF changes determined by ASL-MRI, and vascular dysregulation are the initial events associated with cognitive decline before changes in classical AD biomarkers A β and tau occur⁹⁴. Another recent study revealed that global CBF was lower in cognitively normal *APOE4*-carriers compared to *APOE4* non-carriers prior to development of amyloid deposits¹⁶³. Moreover, *APOE4* subjects who developed amyloid deposition showed lower global CBF compared to those who were free of amyloid¹⁶³. These data suggest that *APOE4* gene can diminish CBF in humans independently of A β , similar as shown in animal studies¹²⁵, but during AD progression *APOE4*-induced amyloid deposition results in even greater CBF reductions. A recent contrast-enhanced perfusion MRI study confirmed significantly reduced CBF in parietotemporal regions and the basal ganglia in MCI compared to healthy controls prior to any gray matter brain atrophy¹⁶⁴, suggesting that CBF alterations are driven by *APOE4* gene¹⁶⁴. These recent studies support the role of reduced cerebral perfusion in the development of cognitive impairment prior to reductions in cortical thickness and/or hippocampal atrophy.

Neurovascular uncoupling in Alzheimer's disease

Studies using BOLD-fMRI detected changes in brain activation in AD in the hippocampus in response to visual stimuli and memory encoding tasks¹⁶⁵ and face-name association tasks¹⁶⁶. BOLD-fMRI studies in cognitively normal individuals with genetic risk for AD (*i.e.*, at least one *APOE4* allele) revealed decreased brain activation in key areas engaged during naming and fluency tasks when compared to age-matched controls with no risk factors¹⁶⁷. Changes in hemodynamic responses to visual stimuli were also found in patients with CAA compared to healthy elderly controls¹⁶⁸. As the diminished BOLD-fMRI responses to different cognitive tasks are regionally specific, collectively BOLD-fMRI findings indicate multiple pathophysiological alterations in neurovascular coupling in early stage AD, and in individuals at genetic risk for AD, demonstrating important role of local CBF dysregulation during AD progression.

Because of the tight relationship between CBF and neuronal activity, the resting state fMRI, also called brain “default-mode network” (DMN), relies on local CBF to provide important insights into how the brain works^{9,169}. DMN typically includes the medial prefrontal cortex, the posterior cingulate and precuneus, inferior parietal lobe, lateral temporal cortex, and hippocampus^{169–171}. A decreased resting-state activity in the posterior cingulate and hippocampus was reported in subjects during early stages of AD when compared to age-matched elderly controls, suggesting disrupted connectivity between these two regions¹⁷². In addition, disrupted hippocampal connectivity was also confirmed in the medial prefrontal cortex and cingulate cortex in AD compared to cognitively normal controls¹⁷³.

A large cross-sectional study found a significant decrease in DMN functional connectivity by fMRI in autosomal dominant AD (ADAD) including presenilin 1 (*PSEN1*), *PSEN2* and *APP* mutation carriers before clinically evident dementia¹⁷⁴. A decrease in functional connectivity with increasing dementia show similarity in ADAD and sporadic AD¹⁷⁵. Early disrupted functional connectivity by fMRI in DMN regions including hippocampus, parahippocampus, precuneus, and cingulate, mediotemporal, and orbital cortices has been demonstrated in non-demented *APOE4* carriers compared to *APOE4* non-carriers prior to amyloid deposits¹⁷⁶, suggesting that early neurovascular dysfunction occurs prior to A β pathology.

Collectively, these studies provide strong evidence demonstrating that impaired cerebrovascular reactivity, CBF reductions, and CBF dysregulation, and BBB breakdown are early events in the AD pathophysiological cascade. How they relate to each other and disrupted brain connectivity remains to be determined by future studies (Box 2).

Conclusions and perspectives

Recent studies have demonstrated that signaling pathways in astrocytes, VSMCs, pericytes, and endothelia control CBF. Importantly, many of the same pathways are found in different NVU cell types, raising a possibility that targeting more common pathways might result in synergistic cellular responses contributing to CBF control. However, some outstanding questions remain as indicated throughout the review. There is also a large gap in understanding how the basic physiological findings of CBF regulation translate to animal

disease models, and humans with healthy brain and neurological disorders associated with neurovascular dysfunction such as AD, as well as between animal disease models and human neurological conditions.

To determine the relative contributions of different cell types and pathways in CBF control, the pathways should be targeted in a cell-specific manner taking advantage of advanced genetic engineering and pharmacological approaches. For example, using cell-specific ablation models and/or disrupting pathways in a cell-specific manner in VSMCs, pericytes, endothelia and astrocytes, coupled with a single-cell RNA sequencing and proteomic analyses, should be able to define more precisely the role of each NVU cell type in neurovascular coupling and maintenance of cerebrovascular integrity. *In vivo* CBF studies are also needed to better understand the neuronal component of CBF regulation, and the role of different neurotransmitter systems in neurovascular coupling.

Although we know that each cell type regulating CBF is affected in neurodegenerative disorders such as AD, the translation of knowledge from bench to bedside has been slow. Studies in the living human brain have established that aberrant cerebrovascular reactivity, CBF reductions and dysregulated CBF are a prominent feature during early stages across the aging-MCI-AD spectrum. However, the pharmaceutical industry and academia are still not reacting in a way to explore systematically whether treating neurovascular dysfunction will delay onset and/or slow down the neurodegenerative process. The question persists – are we missing an important opportunity by not utilizing the wealth of knowledge generated in the vascular field, and not focusing enough on vascular dysregulation as a major therapeutic target in neurodegenerative disease such as AD?

Acknowledgments

The work of B.V.Z. is supported by the National Institutes of Health grants R01AG023084, R01NS090904, R01NS034467, R01AG039452, R01NS100459, P01AG052350 and Cure for Alzheimer's fund. We thank Melanie Sweeney for careful reading of the manuscript.

References

1. Zlokovic BV. Neurovascular pathways to neurodegeneration in Alzheimer's disease and other disorders. *Nat Rev Neurosci.* 2011; 12:723–738. [PubMed: 22048062]
2. Attwell D, et al. Glial and neuronal control of brain blood flow. *Nature.* 2010; 468:232–243. [PubMed: 21068832]
3. Iadecola C. The pathobiology of vascular dementia. *Neuron.* 2013; 80:844–866. [PubMed: 24267647]
4. Moskowitz MA, Lo EH, Iadecola C. The science of stroke: mechanisms in search of treatments. *Neuron.* 2010; 67:181–198. [PubMed: 20670828]
5. Iadecola C. Neurovascular regulation in the normal brain and in Alzheimer's disease. *Nat Rev Neurosci.* 2004; 5:347–360. [PubMed: 15100718]
6. Buxton RB. Interpreting oxygenation-based neuroimaging signals: the importance and the challenge of understanding brain oxygen metabolism. *Front Neuroenergetics.* 2010; doi: 10.3389/fnene.2010.00008
7. Lin AL, Fox PT, Hardies J, Duong TQ, Gao JH. Nonlinear coupling between cerebral blood flow, oxygen consumption, and ATP production in human visual cortex. *Proc Natl Acad Sci.* 2010; 107:8446–8451. [PubMed: 20404151]

8. Greicius MD, Krasnow B, Reiss AL, Menon V. Functional connectivity in the resting brain: a network analysis of the default mode hypothesis. *Proc Natl Acad Sci U S A.* 2003; 100:253–258. [PubMed: 12506194]
9. Snyder AZ, Raichle ME. A brief history of the resting state: the Washington University perspective. *NeuroImage.* 2012; 62:902–910. [PubMed: 22266172]
10. Attwell D, Iadecola C. The neural basis of functional brain imaging signals. *Trends Neurosci.* 2002; 25:621–625. [PubMed: 12446129]
11. Lauritzen M, Mathiesen C, Schaefer K, Thomsen KJ. Neuronal inhibition and excitation, and the dichotomic control of brain hemodynamic and oxygen responses. *NeuroImage.* 2012; 62:1040–1050. [PubMed: 22261372]
12. Hillman EMC. Coupling mechanism and significance of the BOLD signal: a status report. *Annu Rev Neurosci.* 2014; 37:161–181. [PubMed: 25032494]
13. Cauli B, Hamel E. Revisiting the role of neurons in neurovascular coupling. *Front Neuroenergetics.* 2010; 2:9. [PubMed: 20616884]
14. Iadecola C, Nedergaard M. Glial regulation of the cerebral microvasculature. *Nat Neurosci.* 2007; 10:1369–1376. [PubMed: 17965657]
15. Zhao Z, Nelson AR, Betsholtz C, Zlokovic BV. Establishment and Dysfunction of the Blood-Brain Barrier. *Cell.* 2015; 163:1064–1078. [PubMed: 26590417]
16. Chen BR, Bouchard MB, McCaslin AFH, Burgess SA, Hillman EMC. Highspeed vascular dynamics of the hemodynamic response. *NeuroImage.* 2011; 54:1021–1030. [PubMed: 20858545]
17. Chen BR, Kozberg MG, Bouchard MB, Shaik MA, Hillman EMC. A Critical Role for the Vascular Endothelium in Functional Neurovascular Coupling in the Brain. *J Am Heart Assoc.* 2014; 3:e000787–e000787. [PubMed: 24926076]
18. Iadecola C, Yang G, Ebner TJ, Chen G. Local and propagated vascular responses evoked by focal synaptic activity in cerebellar cortex. *J Neurophysiol.* 1997; 78:651–659. [PubMed: 9307102]
19. Tian P, et al. Cortical depth-specific microvascular dilation underlies laminar differences in blood oxygenation level-dependent functional MRI signal. *Proc Natl Acad Sci U S A.* 2010; 107:15246–15251. [PubMed: 20696904]
20. Devor A, et al. ‘Overshoot’ of O₂ is required to maintain baseline tissue oxygenation at locations distal to blood vessels. *J Neurosci Off J Soc Neurosci.* 2011; 31:13676–13681.
21. Kasischke KA, et al. Two-photon NADH imaging exposes boundaries of oxygen diffusion in cortical vascular supply regions. *J Cereb Blood Flow Metab Off J Int Soc Cereb Blood Flow Metab.* 2011; 31:68–81.
22. Sakadžić S, et al. Large arteriolar component of oxygen delivery implies a safe margin of oxygen supply to cerebral tissue. *Nat Commun.* 2014; 5:5734. [PubMed: 25483924]
23. Kisler K, et al. Pericyte degeneration leads to neurovascular uncoupling and limits oxygen supply to brain. *Nat Neurosci.* 2017; doi: 10.1038/nn.4489
24. Hall CN, et al. Capillary pericytes regulate cerebral blood flow in health and disease. *Nature.* 2014; 508:55–60. [PubMed: 24670647]
25. Hill RA, et al. Regional Blood Flow in the Normal and Ischemic Brain Is Controlled by Arteriolar Smooth Muscle Cell Contractility and Not by Capillary Pericytes. *Neuron.* 2015; 87:95–110. [PubMed: 26119027]
26. Mishra A, et al. Astrocytes mediate neurovascular signaling to capillary pericytes but not to arterioles. *Nat Neurosci.* 2016; 19:1619–1627. [PubMed: 27775719]
27. Biesecker KR, et al. Glial Cell Calcium Signaling Mediates Capillary Regulation of Blood Flow in the Retina. *J Neurosci Off J Soc Neurosci.* 2016; 36:9435–9445.
28. Khakh BS, Sofroniew MV. Diversity of astrocyte functions and phenotypes in neural circuits. *Nat Neurosci.* 2015; 18:942–952. [PubMed: 26108722]
29. Tsai HH, et al. Regional astrocyte allocation regulates CNS synaptogenesis and repair. *Science.* 2012; 337:358–362. [PubMed: 22745251]
30. Gundersen V, Storm-Mathisen J, Bergersen LH. Neuroglial Transmission. *Physiol Rev.* 2015; 95:695–726. [PubMed: 26084688]

31. Lee HS, et al. Astrocytes contribute to gamma oscillations and recognition memory. *Proc Natl Acad Sci*. 2014; 111:E3343–E3352. [PubMed: 25071179]
32. Sofroniew MV. Astrocyte barriers to neurotoxic inflammation. *Nat Rev Neurosci*. 2015; 16:249–263. [PubMed: 25891508]
33. Mulligan SJ, MacVicar BA. Calcium transients in astrocyte endfeet cause cerebrovascular constrictions. *Nature*. 2004; 431:195–199. [PubMed: 15356633]
34. Zonta M, et al. Neuron-to-astrocyte signaling is central to the dynamic control of brain microcirculation. *Nat Neurosci*. 2003; 6:43–50. [PubMed: 12469126]
35. Takano T, et al. Astrocyte-mediated control of cerebral blood flow. *Nat Neurosci*. 2006; 9:260–267. [PubMed: 16388306]
36. MacVicar BA, Newman EA. Astrocyte regulation of blood flow in the brain. *Cold Spring Harb Perspect Biol*. 2015; 7
37. Otsu Y, et al. Calcium dynamics in astrocyte processes during neurovascular coupling. *Nat Neurosci*. 2015; 18:210–218. [PubMed: 25531572]
38. Agulhon C, et al. What is the role of astrocyte calcium in neurophysiology? *Neuron*. 2008; 59:932–946. [PubMed: 18817732]
39. Nizar K, et al. In vivo Stimulus-Induced Vasodilation Occurs without IP3 Receptor Activation and May Precede Astrocytic Calcium Increase. *J Neurosci*. 2013; 33:8411–8422. [PubMed: 23658179]
40. Bonder DE, McCarthy KD. Astrocytic Gq-GPCR-Linked IP3R-Dependent Ca²⁺ Signaling Does Not Mediate Neurovascular Coupling in Mouse Visual Cortex In Vivo. *J Neurosci*. 2014; 34:13139–13150. [PubMed: 25253859]
41. Sun W, et al. Glutamate-dependent neuroglial calcium signaling differs between young and adult brain. *Science*. 2013; 339:197–200. [PubMed: 23307741]
42. Piet R, Jahr CE. Glutamatergic and purinergic receptor-mediated calcium transients in Bergmann glial cells. *J Neurosci Off J Soc Neurosci*. 2007; 27:4027–4035.
43. Kim KJ, et al. Astrocyte contributions to flow/pressure-evoked parenchymal arteriole vasoconstriction. *J Neurosci Off J Soc Neurosci*. 2015; 35:8245–8257.
44. Dunn KM, Hill-Eubanks DC, Liedtke WB, Nelson MT. TRPV4 channels stimulate Ca²⁺-induced Ca²⁺ release in astrocytic endfeet and amplify neurovascular coupling responses. *Proc Natl Acad Sci U S A*. 2013; 110:6157–6162. [PubMed: 23530219]
45. Longden TA, Nelson MT. Vascular inward rectifier K⁺ channels as external K⁺ sensors in the control of cerebral blood flow. *Microcirc N Y N* 1994. 2015; 22:183–196.
46. Girouard H, et al. Astrocytic endfoot Ca²⁺ and BK channels determine both arteriolar dilation and constriction. *Proc Natl Acad Sci U S A*. 2010; 107:3811–3816. [PubMed: 20133576]
47. Gordon GRJ, Choi HB, Rungta RL, Ellis-Davies GCR, MacVicar BA. Brain metabolism dictates the polarity of astrocyte control over arterioles. *Nature*. 2008; 456:745–749. [PubMed: 18971930]
48. Mishra A, Hamid A, Newman EA. Oxygen modulation of neurovascular coupling in the retina. *Proc Natl Acad Sci U S A*. 2011; 108:17827–17831. [PubMed: 22006332]
49. Brazitikos PD, Pournaras CJ, Munoz JL, Tsacopoulos M. Microinjection of L-lactate in the preretinal vitreous induces segmental vasodilation in the inner retina of miniature pigs. *Invest Ophthalmol Vis Sci*. 1993; 34:1744–1752. [PubMed: 8473114]
50. Dai M, Yang Y, Shi X. Lactate dilates cochlear capillaries via type V fibrocyte-vessel coupling signaled by nNOS. *AJP Heart Circ Physiol*. 2011; 301:H1248–H1254.
51. Faraci FM, Breese KR. Nitric oxide mediates vasodilatation in response to activation of N-methyl-D-aspartate receptors in brain. *Circ Res*. 1993; 72:476–480. [PubMed: 8380361]
52. Bhardwaj A, et al. P-450 epoxygenase and NO synthase inhibitors reduce cerebral blood flow response to N-methyl-D-aspartate. *Am J Physiol Heart Circ Physiol*. 2000; 279:H1616–1624. [PubMed: 11009448]
53. Buerk DG, Ances BM, Greenberg JH, Detre JA. Temporal dynamics of brain tissue nitric oxide during functional forepaw stimulation in rats. *NeuroImage*. 2003; 18:1–9. [PubMed: 12507439]
- 54K. Kur J, Newman EA. Purinergic control of vascular tone in the retina. *J Physiol*. 2014; 592:491–504. [PubMed: 24277867]

55. Horiuchi T, Dietrich HH, Tsugane S, Dacey RG. Analysis of purine- and pyrimidine-induced vascular responses in the isolated rat cerebral arteriole. *Am J Physiol Heart Circ Physiol*. 2001; 280:H767–776. [PubMed: 11158976]
56. Fields RD, Burnstock G. Purinergic signalling in neuron-glia interactions. *Nat Rev Neurosci*. 2006; 7:423–436. [PubMed: 16715052]
57. Pascual O, et al. Astrocytic purinergic signaling coordinates synaptic networks. *Science*. 2005; 310:113–116. [PubMed: 16210541]
58. Lovatt D, et al. Neuronal adenosine release, and not astrocytic ATP release, mediates feedback inhibition of excitatory activity. *Proc Natl Acad Sci*. 2012; 109:6265–6270. [PubMed: 22421436]
59. Bekar LK, Wei HS, Nedergaard M. The locus coeruleus-norepinephrine network optimizes coupling of cerebral blood volume with oxygen demand. *J Cereb Blood Flow Metab Off J Int Soc Cereb Blood Flow Metab*. 2012; 32:2135–2145.
60. Kozberg MG, Chen BR, DeLeo SE, Bouchard MB, Hillman EMC. Resolving the transition from negative to positive blood oxygen level-dependent responses in the developing brain. *Proc Natl Acad Sci U S A*. 2013; 110:4380–4385. [PubMed: 23426630]
61. Uhlirova H, et al. Cell type specificity of neurovascular coupling in cerebral cortex. *eLife*. 2016; 5
62. Wölfle SE, et al. Non-linear relationship between hyperpolarisation and relaxation enables long distance propagation of vasodilatation. *J Physiol*. 2011; 589:2607–2623. [PubMed: 21486765]
63. Ralevic V, Dunn WR. Purinergic transmission in blood vessels. *Auton Neurosci Basic Clin*. 2015; 191:48–66.
64. Zlokovic BV, Deane R, Sagare AP, Bell RD, Winkler EA. Low-density lipoprotein receptor-related protein-1: a serial clearance homeostatic mechanism controlling Alzheimer's amyloid β -peptide elimination from the brain. *J Neurochem*. 2010; 115:1077–1089. [PubMed: 20854368]
65. Attwell D, Mishra A, Hall CN, O'Farrell FM, Dalkara T. What is a pericyte? *J Cereb Blood Flow Metab Off J Int Soc Cereb Blood Flow Metab*. 2016; 36:451–455.
66. Fernández-Klett F, Priller J. Diverse functions of pericytes in cerebral blood flow regulation and ischemia. *J Cereb Blood Flow Metab Off J Int Soc Cereb Blood Flow Metab*. 2015; 35:883–887.
67. Hartmann DA, et al. Pericyte structure and distribution in the cerebral cortex revealed by high-resolution imaging of transgenic mice. *Neurophotonics*. 2015; 2:041402. [PubMed: 26158016]
68. Cuevas P, et al. Pericyte endothelial gap junctions in human cerebral capillaries. *Anat Embryol (Berl)*. 1984; 170:155–159. [PubMed: 6517350]
69. Armulik A, Genové G, Betsholtz C. Pericytes: developmental, physiological, and pathological perspectives, problems, and promises. *Dev Cell*. 2011; 21:193–215. [PubMed: 21839917]
70. Gerhardt H, Wolburg H, Redies C. N-cadherin mediates pericytic-endothelial interaction during brain angiogenesis in the chicken. *Dev Dyn Off Publ Am Assoc Anat*. 2000; 218:472–479.
71. Winkler EA, Bell RD, Zlokovic BV. Central nervous system pericytes in health and disease. *Nat Neurosci*. 2011; 14:1398–1405. [PubMed: 22030551]
72. Zeisel A, et al. Brain structure. Cell types in the mouse cortex and hippocampus revealed by single-cell RNA-seq. *Science*. 2015; 347:1138–1142. [PubMed: 25700174]
73. Sweeney MD, Ayyadurai S, Zlokovic BV. Pericytes of the neurovascular unit: key functions and signaling pathways. *Nat Neurosci*. 2016; 19:771–783. [PubMed: 27227366]
74. Dai M, Nuttall A, Yang Y, Shi X. Visualization and contractile activity of cochlear pericytes in the capillaries of the spiral ligament. *Hear Res*. 2009; 254:100–107. [PubMed: 19422897]
75. Fernández-Klett F, Offenhauser N, Dirnagl U, Priller J, Lindauer U. Pericytes in capillaries are contractile in vivo, but arterioles mediate functional hyperemia in the mouse brain. *Proc Natl Acad Sci U S A*. 2010; 107:22290–22295. [PubMed: 21135230]
76. Neuhaus AA, Couch Y, Sutherland BA, Buchan AM. Novel method to study pericyte contractility and responses to ischaemia in vitro using electrical impedance. *J Cereb Blood Flow Metab Off J Int Soc Cereb Blood Flow Metab*. 2016; doi: 10.1177/0271678X16659495
77. Peppiatt CM, Howarth C, Mobbs P, Attwell D. Bidirectional control of CNS capillary diameter by pericytes. *Nature*. 2006; 443:700–704. [PubMed: 17036005]

78. Yamanishi S, Katsumura K, Kobayashi T, Puro DG. Extracellular lactate as a dynamic vasoactive signal in the rat retinal microvasculature. *Am J Physiol Heart Circ Physiol*. 2006; 290:H925–934. [PubMed: 16299264]
79. Wei HS, et al. Erythrocytes Are Oxygen-Sensing Regulators of the Cerebral Microcirculation. *Neuron*. 2016; 91:851–862. [PubMed: 27499087]
80. Kawamura H, et al. Effects of angiotensin II on the pericyte-containing microvasculature of the rat retina. *J Physiol*. 2004; 561:671–683. [PubMed: 15486015]
81. Bandopadhyay R, et al. Contractile proteins in pericytes at the blood-brain and blood-retinal barriers. *J Neurocytol*. 2001; 30:35–44. [PubMed: 11577244]
82. Chaigneau E, Oheim M, Audinat E, Charpak S. Two-photon imaging of capillary blood flow in olfactory bulb glomeruli. *Proc Natl Acad Sci U S A*. 2003; 100:13081–13086. [PubMed: 14569029]
83. Stefanovic B, et al. Functional reactivity of cerebral capillaries. *J Cereb Blood Flow Metab Off J Int Soc Cereb Blood Flow Metab*. 2008; 28:961–972.
84. Hutchinson EB, Stefanovic B, Koretsky AP, Silva AC. Spatial flow-volume dissociation of the cerebral microcirculatory response to mild hypercapnia. *NeuroImage*. 2006; 32:520–530. [PubMed: 16713717]
85. Fernández-Klett F, et al. Early loss of pericytes and perivascular stromal cell-induced scar formation after stroke. *J Cereb Blood Flow Metab Off J Int Soc Cereb Blood Flow Metab*. 2013; 33:428–439.
86. Yemisci M, et al. Pericyte contraction induced by oxidative-nitrative stress impairs capillary reflow despite successful opening of an occluded cerebral artery. *Nat Med*. 2009; 15:1031–1037. [PubMed: 19718040]
87. Kawamura H, et al. ATP: a vasoactive signal in the pericyte-containing microvasculature of the rat retina. *J Physiol*. 2003; 551:787–799. [PubMed: 12876212]
88. Lacar B, Herman P, Hartman NW, Hyder F, Bordey A. S phase entry of neural progenitor cells correlates with increased blood flow in the young subventricular zone. *PLoS One*. 2012; 7:e31960. [PubMed: 22359646]
89. Hamilton NB, Attwell D, Hall CN. Pericyte-mediated regulation of capillary diameter: a component of neurovascular coupling in health and disease. *Front Neuroenergetics*. 2010; 2
90. Toledo JB, et al. Alzheimer's Disease Neuroimaging Initiative (ADNI). Clinical and multimodal biomarker correlates of ADNI neuropathological findings. *Acta Neuropathol Commun*. 2013; 1:65. [PubMed: 24252435]
91. Montagne A, et al. Blood-brain barrier breakdown in the aging human hippocampus. *Neuron*. 2015; 85:296–302. [PubMed: 25611508]
92. Sweeney MD, Sagare AP, Zlokovic BV. Cerebrospinal fluid biomarkers of neurovascular dysfunction in mild dementia and Alzheimer's disease. *J Cereb Blood Flow Metab Off J Int Soc Cereb Blood Flow Metab*. 2015; 35:1055–1068.
93. Arvanitakis Z, Capuano AW, Leurgans SE, Bennett DA, Schneider JA. Relation of cerebral vessel disease to Alzheimer's disease dementia and cognitive function in elderly people: a cross-sectional study. *Lancet Neurol*. 2016; 15:934–943. [PubMed: 27312738]
94. Iturria-Medina Y, Sotero RC, Toussaint PJ, Mateos-Pérez JM, Evans AC. Alzheimer's Disease Neuroimaging Initiative Early role of vascular dysregulation on late-onset Alzheimer's disease based on multifactorial data-driven analysis. *Nat Commun*. 2016; 7:11934. [PubMed: 27327500]
95. Nelson AR, Sweeney MD, Sagare AP, Zlokovic BV. Neurovascular dysfunction and neurodegeneration in dementia and Alzheimer's disease. *Biochim Biophys Acta*. 2016; 1862:887–900. [PubMed: 26705676]
96. Wardlaw JM, et al. STandards for ReportIng Vascular changes on nEuroimaging (STRIVE v1). Neuroimaging standards for research into small vessel disease and its contribution to ageing and neurodegeneration. *Lancet Neurol*. 2013; 12:822–838. [PubMed: 23867200]
97. Montine TJ, et al. ADRD 2013 Conference Organizing Committee. Recommendations of the Alzheimer's disease-related dementias conference. *Neurology*. 2014; 83:851–860. [PubMed: 25080517]

98. Snyder HM, et al. Vascular contributions to cognitive impairment and dementia including Alzheimer's disease. *Alzheimers Dement J Alzheimers Assoc.* 2015; 11:710–717.
99. Hachinski V. World Stroke Organization. Stroke and Potentially Preventable Dementias Proclamation: Updated World Stroke Day Proclamation. *Stroke J Cereb Circ.* 2015; 46:3039–3040.
100. Iadecola C. Cerebrovascular effects of amyloid-beta peptides: mechanisms and implications for Alzheimer's dementia. *Cell Mol Neurobiol.* 2003; 23:681–689. [PubMed: 14514024]
101. Zlokovic BV. The blood-brain barrier in health and chronic neurodegenerative disorders. *Neuron.* 2008; 57:178–201. [PubMed: 18215617]
102. Bell RD, et al. Pericytes control key neurovascular functions and neuronal phenotype in the adult brain and during brain aging. *Neuron.* 2010; 68:409–427. [PubMed: 21040844]
103. Sengillo JD, et al. Deficiency in mural vascular cells coincides with blood-brain barrier disruption in Alzheimer's disease. *Brain Pathol Zurich Switz.* 2013; 23:303–310.
104. Halliday MR, et al. Accelerated pericyte degeneration and blood-brain barrier breakdown in apolipoprotein E4 carriers with Alzheimer's disease. *J Cereb Blood Flow Metab Off J Int Soc Cereb Blood Flow Metab.* 2015; doi: 10.1038/jcbfm.2015.44
105. Park L, et al. Age-dependent neurovascular dysfunction and damage in a mouse model of cerebral amyloid angiopathy. *Stroke J Cereb Circ.* 2014; 45:1815–1821.
106. Sagare AP, et al. Pericyte loss influences Alzheimer-like neurodegeneration in mice. *Nat Commun.* 2013; 4:2932. [PubMed: 24336108]
107. Farkas E, Luiten PG. Cerebral microvascular pathology in aging and Alzheimer's disease. *Prog Neurobiol.* 2001; 64:575–611. [PubMed: 11311463]
108. Baloyannis SJ, Baloyannis IS. The vascular factor in Alzheimer's disease: a study in Golgi technique and electron microscopy. *J Neurol Sci.* 2012; 322:117–121. [PubMed: 22857991]
109. Winkler EA, et al. Blood-spinal cord barrier breakdown and pericyte reductions in amyotrophic lateral sclerosis. *Acta Neuropathol (Berl).* 2013; 125:111–120. [PubMed: 22941226]
110. Winkler EA, Sengillo JD, Bell RD, Wang J, Zlokovic BV. Blood-spinal cord barrier pericyte reductions contribute to increased capillary permeability. *J Cereb Blood Flow Metab Off J Int Soc Cereb Blood Flow Metab.* 2012; 32:1841–1852.
111. Underly RG, et al. Pericytes as Inducers of Rapid, Matrix Metalloproteinase-9-Dependent Capillary Damage during Ischemia. *J Neurosci.* 2017; 37:129–140. [PubMed: 28053036]
112. Wilhelmus MMM, et al. Lipoprotein receptor-related protein-1 mediates amyloid-beta-mediated cell death of cerebrovascular cells. *Am J Pathol.* 2007; 171:1989–1999. [PubMed: 18055545]
113. Faraco G, Iadecola C. Hypertension: a harbinger of stroke and dementia. *Hypertens Dallas Tex* 1979. 2013; 62:810–817.
114. Capone C, et al. Central Cardiovascular Circuits Contribute to the Neurovascular Dysfunction in Angiotensin II Hypertension. *J Neurosci.* 2012; 32:4878–4886. [PubMed: 22492044]
115. Faraco G, et al. Hypertension enhances A β -induced neurovascular dysfunction, promotes β -secretase activity, and leads to amyloidogenic processing of APP. *J Cereb Blood Flow Metab Off J Int Soc Cereb Blood Flow Metab.* 2016; 36:241–252.
116. Capone C, et al. The cerebrovascular dysfunction induced by slow pressor doses of angiotensin II precedes the development of hypertension. *AJP Heart Circ Physiol.* 2011; 300:H397–H407.
117. Kazama K. Angiotensin II Impairs Neurovascular Coupling in Neocortex Through NADPH Oxidase-Derived Radicals. *Circ Res.* 2004; 95:1019–1026. [PubMed: 15499027]
118. Girouard H. Angiotensin II Attenuates Endothelium-Dependent Responses in the Cerebral Microcirculation Through Nox-2-Derived Radicals. *Arterioscler Thromb Vasc Biol.* 2006; 26:826–832. [PubMed: 16439707]
119. Didion SP, Sigmund CD, Faraci FM, Katusic ZS. Impaired Endothelial Function in Transgenic Mice Expressing Both Human Renin and Human Angiotensinogen Editorial Comment. *Stroke.* 2000; 31:760–765. [PubMed: 10700516]
120. Toth P, et al. Age-related autoregulatory dysfunction and cerebrovascular injury in mice with angiotensin II-induced hypertension. *J Cereb Blood Flow Metab Off J Int Soc Cereb Blood Flow Metab.* 2013; 33:1732–1742.

121. Ghosh M, et al. Pericytes are involved in the pathogenesis of cerebral autosomal dominant arteriopathy with subcortical infarcts and leukoencephalopathy. *Ann Neurol.* 2015; 78:887–900. [PubMed: 26312599]
122. Joutel A, et al. Cerebrovascular dysfunction and microcirculation rarefaction precede white matter lesions in a mouse genetic model of cerebral ischemic small vessel disease. *J Clin Invest.* 2010; 120:433–445. [PubMed: 20071773]
123. Dziejulska D, Lewandowska E. Pericytes as a new target for pathological processes in CADASIL. *Neuropathol Off J Jpn Soc Neuropathol.* 2012; 32:515–521.
124. Lacombe P, Oligo C, Domenga V, Tournier-Lasserre E, Joutel A. Impaired cerebral vasoreactivity in a transgenic mouse model of cerebral autosomal dominant arteriopathy with subcortical infarcts and leukoencephalopathy arteriopathy. *Stroke J Cereb Circ.* 2005; 36:1053–1058.
125. Bell RD, et al. Apolipoprotein E controls cerebrovascular integrity via cyclophilin A. *Nature.* 2012; 485:512–516. [PubMed: 22622580]
126. Wiesmann M, et al. A Dietary Treatment Improves Cerebral Blood Flow and Brain Connectivity in Aging apoE4 Mice. *Neural Plast.* 2016; 2016:6846721. [PubMed: 27034849]
127. Alata W, Ye Y, St-Amour I, Vandal M, Calon F. Human apolipoprotein E ϵ 4 expression impairs cerebral vascularization and blood-brain barrier function in mice. *J Cereb Blood Flow Metab Off J Int Soc Cereb Blood Flow Metab.* 2015; 35:86–94.
128. Thomas T, Thomas G, McLendon C, Sutton T, Mullan M. beta-Amyloid-mediated vasoactivity and vascular endothelial damage. *Nature.* 1996; 380:168–171. [PubMed: 8600393]
129. Zhang F, Eckman C, Younkin S, Hsiao KK, Iadecola C. Increased susceptibility to ischemic brain damage in transgenic mice overexpressing the amyloid precursor protein. *J Neurosci Off J Soc Neurosci.* 1997; 17:7655–7661.
130. Iadecola C, et al. SOD1 rescues cerebral endothelial dysfunction in mice overexpressing amyloid precursor protein. *Nat Neurosci.* 1999; 2:157–161. [PubMed: 10195200]
131. Niwa K, et al. Abeta 1-40-related reduction in functional hyperemia in mouse neocortex during somatosensory activation. *Proc Natl Acad Sci U S A.* 2000; 97:9735–9740. [PubMed: 10944232]
132. Deane R, et al. RAGE mediates amyloid-beta peptide transport across the blood-brain barrier and accumulation in brain. *Nat Med.* 2003; 9:907–913. [PubMed: 12808450]
133. Deane R, et al. A multimodal RAGE-specific inhibitor reduces amyloid β -mediated brain disorder in a mouse model of Alzheimer disease. *J Clin Invest.* 2012; 122:1377–1392. [PubMed: 22406537]
134. Park L, et al. NADPH-oxidase-derived reactive oxygen species mediate the cerebrovascular dysfunction induced by the amyloid beta peptide. *J Neurosci Off J Soc Neurosci.* 2005; 25:1769–1777.
135. Park L, et al. The key role of transient receptor potential melastatin-2 channels in amyloid- β -induced neurovascular dysfunction. *Nat Commun.* 2014; 5:5318. [PubMed: 25351853]
136. Park L, et al. Scavenger receptor CD36 is essential for the cerebrovascular oxidative stress and neurovascular dysfunction induced by amyloid-beta. *Proc Natl Acad Sci U S A.* 2011; 108:5063–5068. [PubMed: 21383152]
137. Bell RD, et al. SRF and myocardin regulate LRP-mediated amyloid-beta clearance in brain vascular cells. *Nat Cell Biol.* 2009; 11:143–153. [PubMed: 19098903]
138. Kimbrough IF, Robel S, Roberson ED, Sontheimer H. Vascular amyloidosis impairs the gliovascular unit in a mouse model of Alzheimer's disease. *Brain J Neurol.* 2015; 138:3716–3733.
139. Chow N, et al. Serum response factor and myocardin mediate arterial hypercontractility and cerebral blood flow dysregulation in Alzheimer's phenotype. *Proc Natl Acad Sci U S A.* 2007; 104:823–828. [PubMed: 17215356]
140. Wiesmann M, et al. Angiotensin II, hypertension, and angiotensin II receptor antagonism: Roles in the behavioural and brain pathology of a mouse model of Alzheimer's disease. *J Cereb Blood Flow Metab Off J Int Soc Cereb Blood Flow Metab.* 2016; doi: 10.1177/0271678X16667364
141. Okamoto Y, et al. Cerebral hypoperfusion accelerates cerebral amyloid angiopathy and promotes cortical microinfarcts. *Acta Neuropathol (Berl).* 2012; 123:381–394. [PubMed: 22170742]

142. Milner E, et al. Cerebral amyloid angiopathy increases susceptibility to infarction after focal cerebral ischemia in Tg2576 mice. *Stroke*. 2014; 45:3064–3069. [PubMed: 25190447]
143. Toda N, Okamura T. Hyperhomocysteinemia impairs regional blood flow: involvements of endothelial and neuronal nitric oxide. *Pflugers Arch*. 2016; 468:1517–1525. [PubMed: 27417104]
144. Sudduth TL, Powell DK, Smith CD, Greenstein A, Wilcock DM. Induction of hyperhomocysteinemia models vascular dementia by induction of cerebral microhemorrhages and neuroinflammation. *J Cereb Blood Flow Metab Off J Int Soc Cereb Blood Flow Metab*. 2013; 33:708–715.
145. Sudduth TL, Weekman EM, Brothers HM, Braun K, Wilcock DM. β -amyloid deposition is shifted to the vasculature and memory impairment is exacerbated when hyperhomocysteinemia is induced in APP/PS1 transgenic mice. *Alzheimers Res Ther*. 2014; 6:32. [PubMed: 24991237]
146. Den Abeelen ASSM, Lagro J, van Beek AHEA, Claassen JAHR. Impaired cerebral autoregulation and vasomotor reactivity in sporadic Alzheimer's disease. *Curr Alzheimer Res*. 2014; 11:11–17. [PubMed: 24251392]
147. Suri S, et al. Reduced cerebrovascular reactivity in young adults carrying the APOE ϵ 4 allele. *Alzheimers Dement J Alzheimers Assoc*. 2015; 11:648–657.e1.
148. Hajjar I, Sorond F, Lipsitz LA. Apolipoprotein E, carbon dioxide vasoreactivity, and cognition in older adults: effect of hypertension. *J Am Geriatr Soc*. 2015; 63:276–281. [PubMed: 25688603]
149. Yezhuvath US, et al. Forebrain-dominant deficit in cerebrovascular reactivity in Alzheimer's disease. *Neurobiol Aging*. 2012; 33:75–82. [PubMed: 20359779]
150. Ruitenbergh A, et al. Cerebral hypoperfusion and clinical onset of dementia: the Rotterdam Study. *Ann Neurol*. 2005; 57:789–794. [PubMed: 15929050]
151. Kogure D, et al. Longitudinal evaluation of early Alzheimer's disease using brain perfusion SPECT. *J Nucl Med Off Publ Soc Nucl Med*. 2000; 41:1155–1162.
152. Minoshima S, et al. Metabolic reduction in the posterior cingulate cortex in very early Alzheimer's disease. *Ann Neurol*. 1997; 42:85–94. [PubMed: 9225689]
153. Hirao K, et al. Functional interactions between entorhinal cortex and posterior cingulate cortex at the very early stage of Alzheimer's disease using brain perfusion single-photon emission computed tomography. *Nucl Med Commun*. 2006; 27:151–156. [PubMed: 16404228]
154. Yuan B, et al. Differential Effects of APOE Genotypes on the Anterior and Posterior Subnetworks of Default Mode Network in Amnesic Mild Cognitive Impairment. *J Alzheimers Dis JAD*. 2016; doi: 10.3233/JAD-160353
155. Matsuda H, et al. Longitudinal evaluation of both morphologic and functional changes in the same individuals with Alzheimer's disease. *J Nucl Med Off Publ Soc Nucl Med*. 2002; 43:304–311.
156. Daulatzai MA. Cerebral hypoperfusion and glucose hypometabolism: Key pathophysiological modulators promote neurodegeneration, cognitive impairment, and Alzheimer's disease. *J Neurosci Res*. 2016; doi: 10.1002/jnr.23777
157. Mosconi L, et al. Functional interactions of the entorhinal cortex: an 18F-FDG PET study on normal aging and Alzheimer's disease. *J Nucl Med Off Publ Soc Nucl Med*. 2004; 45:382–392.
158. Hirao K, et al. The prediction of rapid conversion to Alzheimer's disease in mild cognitive impairment using regional cerebral blood flow SPECT. *NeuroImage*. 2005; 28:1014–1021. [PubMed: 16129627]
159. Borroni B, et al. Combined 99mTc-ECD SPECT and neuropsychological studies in MCI for the assessment of conversion to AD. *Neurobiol Aging*. 2006; 27:24–31. [PubMed: 16298237]
160. Thambisetty M, Beason-Held L, An Y, Kraut MA, Resnick SM. APOE epsilon4 genotype and longitudinal changes in cerebral blood flow in normal aging. *Arch Neurol*. 2010; 67:93–98. [PubMed: 20065135]
161. Reiman EM, et al. Functional brain abnormalities in young adults at genetic risk for late-onset Alzheimer's dementia. *Proc Natl Acad Sci U S A*. 2004; 101:284–289. [PubMed: 14688411]
162. Chen Y, et al. Voxel-level comparison of arterial spin-labeled perfusion MRI and FDG-PET in Alzheimer disease. *Neurology*. 2011; 77:1977–1985. [PubMed: 22094481]

163. Michels L, et al. Arterial spin labeling imaging reveals widespread and A β -independent reductions in cerebral blood flow in elderly apolipoprotein epsilon-4 carriers. *J Cereb Blood Flow Metab Off J Int Soc Cereb Blood Flow Metab*. 2016; 36:581–595.
164. Wirth M, et al. Divergent regional patterns of cerebral hypoperfusion and gray matter atrophy in mild cognitive impairment patients. *J Cereb Blood Flow Metab Off J Int Soc Cereb Blood Flow Metab*. 2016; doi: 10.1177/0271678X16641128
165. Small SA, Perera GM, DeLaPaz R, Mayeux R, Stern Y. Differential regional dysfunction of the hippocampal formation among elderly with memory decline and Alzheimer's disease. *Ann Neurol*. 1999; 45:466–472. [PubMed: 10211471]
166. Sperling RA, et al. fMRI studies of associative encoding in young and elderly controls and mild Alzheimer's disease. *J Neurol Neurosurg Psychiatry*. 2003; 74:44–50. [PubMed: 12486265]
167. Smith CD, et al. Altered brain activation in cognitively intact individuals at high risk for Alzheimer's disease. *Neurology*. 1999; 53:1391–1396. [PubMed: 10534240]
168. Dumas A, et al. Functional magnetic resonance imaging detection of vascular reactivity in cerebral amyloid angiopathy. *Ann Neurol*. 2012; 72:76–81. [PubMed: 22829269]
169. Kim SG, Ogawa S. Biophysical and physiological origins of blood oxygenation level-dependent fMRI signals. *J Cereb Blood Flow Metab Off J Int Soc Cereb Blood Flow Metab*. 2012; 32:1188–1206.
170. Dennis EL, Thompson PM. Functional brain connectivity using fMRI in aging and Alzheimer's disease. *Neuropsychol Rev*. 2014; 24:49–62. [PubMed: 24562737]
171. Raichle ME, et al. A default mode of brain function. *Proc Natl Acad Sci U S A*. 2001; 98:676–682. [PubMed: 11209064]
172. Greicius MD, Srivastava G, Reiss AL, Menon V. Default-mode network activity distinguishes Alzheimer's disease from healthy aging: evidence from functional MRI. *Proc Natl Acad Sci U S A*. 2004; 101:4637–4642. [PubMed: 15070770]
173. Wang L, et al. Changes in hippocampal connectivity in the early stages of Alzheimer's disease: evidence from resting state fMRI. *NeuroImage*. 2006; 31:496–504. [PubMed: 16473024]
174. Chhatwal JP, et al. Impaired default network functional connectivity in autosomal dominant Alzheimer disease. *Neurology*. 2013; 81:736–744. [PubMed: 23884042]
175. Thomas JB, et al. Functional connectivity in autosomal dominant and late-onset Alzheimer disease. *JAMA Neurol*. 2014; 71:1111–1122. [PubMed: 25069482]
176. Sheline YI, et al. APOE4 allele disrupts resting state fMRI connectivity in the absence of amyloid plaques or decreased CSF A β 42. *J Neurosci Off J Soc Neurosci*. 2010; 30:17035–17040.
177. Zimmerman KW. Der feinere Bau der Blutkapillaren. 1923; 68:29–36.
178. Winkler EA, Sagare AP, Zlokovic BV. The pericyte: a forgotten cell type with important implications for Alzheimer's disease? *Brain Pathol Zurich Switz*. 2014; 24:371–386.
179. Nehls V, Drenckhahn D. Heterogeneity of microvascular pericytes for smooth muscle type alpha-actin. *J Cell Biol*. 1991; 113:147–154. [PubMed: 2007619]
180. Montagne A, et al. Brain imaging of neurovascular dysfunction in Alzheimer's disease. *Acta Neuropathol (Berl)*. 2016; 131:687–707. [PubMed: 27038189]
181. Starr JM, Farrall AJ, Armitage P, McGurn B, Wardlaw J. Blood-brain barrier permeability in Alzheimer's disease: a case-control MRI study. *Psychiatry Res*. 2009; 171:232–241. [PubMed: 19211227]
182. Van de Haar HJ, et al. Blood-Brain Barrier Leakage in Patients with Early Alzheimer Disease. *Radiology*. 2016; 152244doi: 10.1148/radiol.2016152244
183. Taheri S, et al. Blood-brain barrier permeability abnormalities in vascular cognitive impairment. *Stroke J Cereb Circ*. 2011; 42:2158–2163.
184. Nir TM, et al. Alzheimer's Disease Neuroimaging Initiative (ADNI). Effectiveness of regional DTI measures in distinguishing Alzheimer's disease, MCI, and normal aging. *NeuroImage Clin*. 2013; 3:180–195. [PubMed: 24179862]

Box 1**Pericyte definition and the question of contractility**

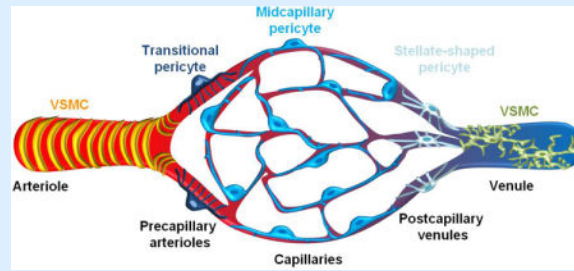
Zimmermann¹⁷⁷ included in the definition of pericytes several subtypes that differ by morphology, location within the vascular tree, and function^{65,73,178}. Indeed, a recent morphological study⁶⁷ indicated that pericytes represent a heterogeneous cell population with different subtypes including “mid-capillary” in the majority of the capillary bed, “transitional” close to vascular smooth muscle cells (VSMCs), and “stellate” on post-capillary venules, as compared to arteriolar ringed VSMCs^{65,67} (Box 1 figure). Whether different pericyte subtypes have different functions in brain microcirculation such as, for example, regulation of blood-brain barrier (BBB) permeability versus control of blood flow⁶⁵, remains to be determined.

When it comes to cell contractility, earlier studies have shown that transitional pericytes of pre- and post-capillary microvascular segments express α -smooth muscle actin (SMA)¹⁷⁹, a contractile protein typically found in VSMCs²⁵. Using a highly-sensitive immunogold labeling at the ultrastructural level, SMA expression has been shown in a significant number of mid-capillary pericytes in brain and retina⁸¹, which has been corroborated by immunostaining by some studies^{81,86}, but not by others^{25,79}. Besides SMA, other contractile proteins such as myosin and vimentin have been identified in mid-capillary pericytes in brain *in situ*⁸¹. A recent single-cell RNA-seq study demonstrated expression of several contractile proteins in pericytes derived from mouse cortex or hippocampus including skeletal muscle actin, vimentin, desmin, calponin, non-muscle myosin variants, and a low SMA expression⁷². Importantly, it would be unfortunate to limit one's thinking by assuming that one particular specialized cell type, like VSMCs, must necessarily reflect how the generally occurring phenomenon of contractility in other cell types within the neurovascular unit is achieved, including pericytes.

Although some studies failed to show pericyte contractility *in vivo*^{25,79}, multiple studies reported that pericytes regulate CBF^{23,24,26,27,65,66,74–78}. Pericytes dilate in response to lactate^{47,50,78}, or contract in response to K^+ , Ca^{2+} ,⁷⁴ or after application of the thromboxane A2 agonist U46619 *in vivo*⁷⁵. They also contract after electrical stimulation or when exposed to neurotransmitters *ex vivo* in rat retina⁷⁷ and cerebellar slices²⁴. Human pericytes in culture treated with endothelin-1 also contract⁷⁶. *In vivo* studies measuring capillary diameter changes in cortex upon hind limb stimulation^{23,26} and whisker stimulation²⁴, or in the retina after light stimulation²⁷ also demonstrated active capillary dilation and pericyte ability to regulate capillary tone.

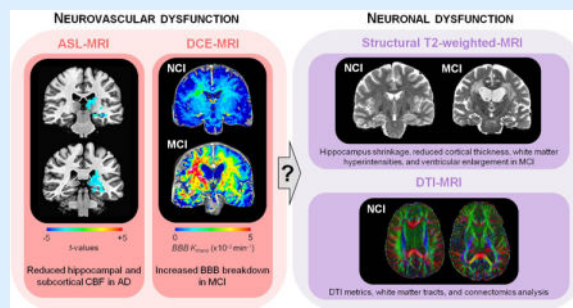
Still, a number of outstanding questions remain to be addressed when it comes to a definition of a pericyte. Some of these questions are: Can a pericyte be molecularly defined by a single cell RNA-seq of a genome-deep quantitative transcriptional profiling compared to other cell types of the neurovascular unit? Do different pericyte subtypes exist in the same organ, and can they be molecularly distinguished from each other in the brain as suggested by morphological studies? Do pericytes have organotypic features, as

do endothelial cells, and are pericytes in brain different from pericytes in peripheral organs?



Box 2**Early imaging biomarkers of neurovascular and neuronal dysfunction**

As recently reviewed¹⁸⁰, multiple imaging modalities and biomarkers in the living human brain have been used to evaluate neurovascular and neuronal dysfunction during early stages of Alzheimer's disease (AD) pathophysiology. Here, we will briefly examine some of these biomarkers and how they relate to each other. For example, early cerebral blood flow (CBF) studies using transcranial Doppler¹⁵⁰ or SPECT^{151,155} and recent studies using arterial spin labeling (ASL)-MRI^{94,163} and contrast-enhanced MRI¹⁶⁴ have suggested that CBF reductions in the hippocampus, cingulate cortex and precuneus precede cognitive decline, hippocampal and cortical atrophy and/or amyloid deposition during early stages of AD, and are observed in individuals with genetic risk for AD including APOE4 carriers. Similarly, recent studies using dynamic contrast-enhanced (DCE)-MRI have shown increased blood-brain barrier (BBB) permeability in the hippocampus during normal aging with no cognitive impairment (NCI), which worsens with mild cognitive impairment (MCI), but precedes changes in hippocampal volume⁹¹. DCE-MRI studies also confirmed BBB breakdown in the hippocampus and cortical and subcortical regions during early stages of AD^{181,182} and in individuals with vascular cognitive impairment¹⁸³. Some studies have suggested that neurovascular dysfunction occurs prior to amyloid deposition and tau-mediated neurodegeneration⁹⁴, and/or changes in A β and tau cerebrospinal fluid (CSF) biomarkers^{91,92}. However, longitudinal studies are needed to establish the exact temporal pattern of neurovascular changes relative to brain atrophy, and how they relate to A β and tau CSF biomarkers, amyloid and tau lesions, and cognitive decline, particularly in individuals with genetic risk for sporadic AD (i.e., APOE4) and autosomal dominant AD (ADAD) (i.e., PSEN1, PSEN2 and APP mutation carriers). It is also unclear how CBF changes relate to BBB changes and white matter hyperintensities in early stages of NCI and aging-MCI-AD spectrum. It is also almost completely unclear how imaging biomarkers of neurovascular dysfunction relate to disrupted structural connectivity determined by diffusion tensor imaging (DTI)-MRI and DTI-based connectomics analysis¹⁸⁴ or functional connectivity by resting state fMRI in default-mode network regions^{169,171}.



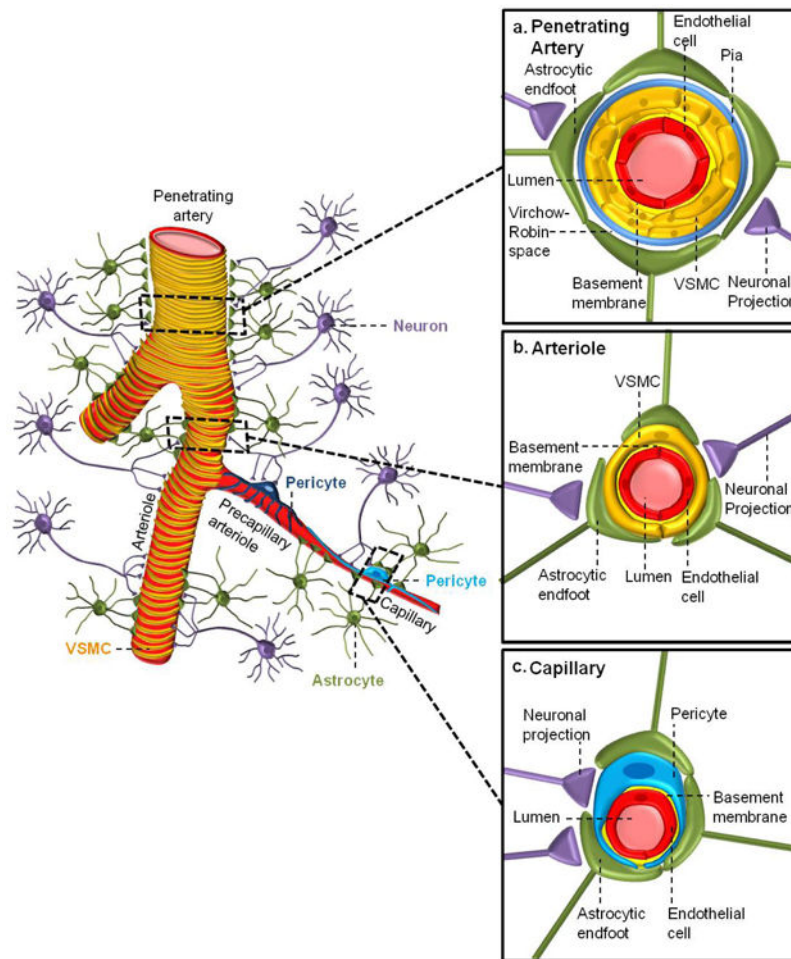


Figure 1. A schematic representation of the neurovascular unit showing cellular elements regulating cerebral blood flow along the vascular tree

Different cell types of the neurovascular unit (NVU) including neurons, astrocytes, mural cells – vascular smooth muscle cells (VSMCs) and pericytes, and endothelium, regulate cerebral blood flow at different levels of the vascular tree. The cellular composition of the NVU differs along the vascular tree, but the principal cellular components all remain represented, as illustrated here. **a)** At the level of penetrating arteries, the NVU is composed of endothelial cells making up the inner layer of the vessel wall, covered by a thin extracellular basement membrane and ringed by one to three layers of VSMCs, and ensheathed by pia. The Virchow-Robin space containing the cerebrospinal fluid is between pia and the glia limitans formed by astrocytic endfeet. Both VSMCs and astrocytes are innervated by local neurons. **b)** Arterioles differ in that there is only one layer of VSMCs, and astrocyte coverage and innervation of the vessel wall and endothelial inner layer display continuity with penetrating arteries, and brain capillaries, above and below the arteriole level, respectively. In addition to VSMCs, precapillary arterioles may also contain transitional pericytes, a cell type between pericyte and VSMCs. **c)** At the capillary level, the NVU is composed of endothelial cells that share a common basement membrane with pericytes. Pericytes stretch their processes along and around capillaries and make direct interdigitated or “peg-socket”-like contacts with endothelial cells. Pericytes and endothelial

cells are covered by astrocyte endfeet. Both astrocytes and pericytes are innervated by local neurons similar as shown for astrocytes and VSMCs in the upper segments of the vascular tree.

Author Manuscript

Author Manuscript

Author Manuscript

Author Manuscript

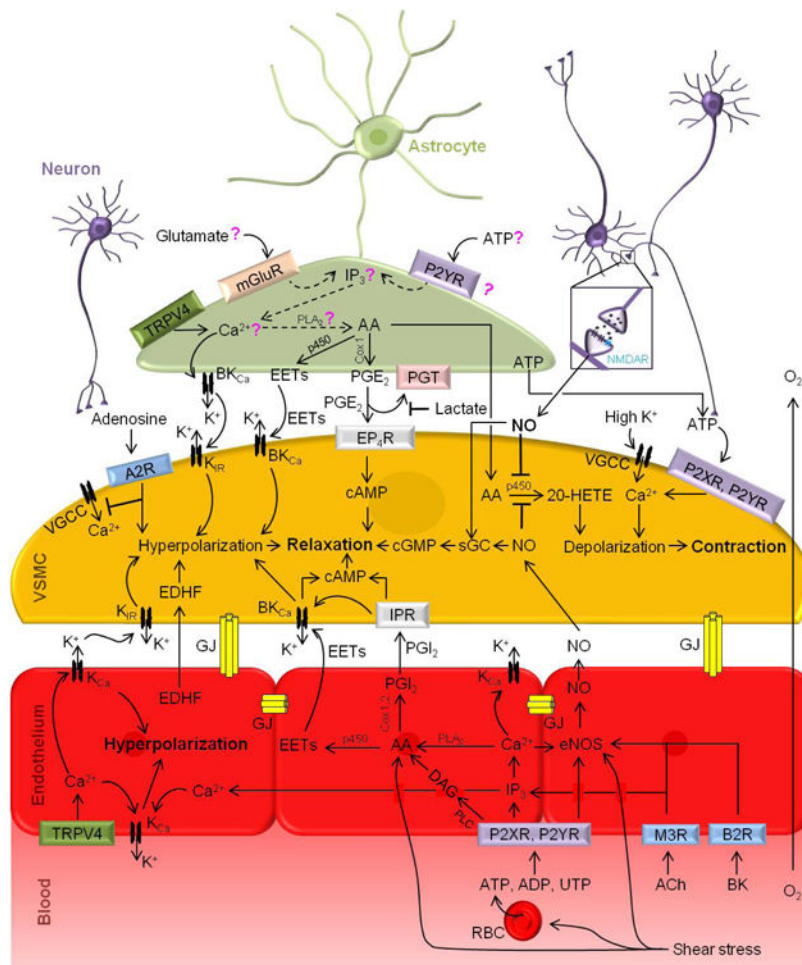


Figure 2. Arteriolar regulation of cerebral blood flow

Neurons. Nitric oxide (NO) is a major moderator of functional hyperemia. NO produced by neurons acts directly on VSMCs, leading to VSMC hyperpolarization and relaxation. Adenosine triphosphate (ATP) and adenosine released by neuronal activity can also act directly on VSMCs through purinergic P2XR and P2YR receptors resulting in constriction, or adenosine 2A receptors (A2R) resulting in relaxation, respectively. Neuronal-mediated large increases in extracellular $[K^+]$ activate VSMC voltage-gated calcium channels (VGCCs), resulting in VSMCs intracellular $[Ca^{2+}]$ increases, leading to depolarization and contraction.

Astrocytes. The role of astrocytes in neurovascular coupling to arterioles is controversial. Glutamate or ATP released from neurons are postulated to act on metabotropic glutamate receptors (mGluR) or P2YR on astrocytes, respectively, to initiate 1,4,5-trisphosphate (IP_3)-dependent intracellular $[Ca^{2+}]$ increase, which has been shown by some studies to contribute to neurovascular coupling, but disputed by others. According to some studies, intracellular $[Ca^{2+}]$ rise launches signaling cascades in the astrocytes and release of vasoactive ions and molecules from astrocyte endfeet to VSMCs, mainly K^+ ions from large conductance calcium-activated potassium channels (BK_{Ca}), arachidonic acid (AA), through phospholipase A2 (PLA_2) pathway, and AA metabolic products epoxyeicosatetraenoic acids (EETs), and prostaglandin E2 (PGE_2), via cytochrome P450 (p450) and cyclooxygenase 1

(Cox1), respectively. Extracellular Ca^{2+} intake from transient receptor potential vanilloid channel 4 (TRPV4) provides another means of increasing intracellular $[\text{Ca}^{2+}]$. Dashed lines and question marks indicate pathways for which there is limited or conflicting data in the literature.

VSMCs. EETs and moderate increases in extracellular $[\text{K}^+]$ both act on VSMC potassium channels including BK_{Ca} and inward rectifier potassium channels (K_{IR}), resulting in hyperpolarization and relaxation of the VSMCs (*left*). However, large increases in extracellular $[\text{K}^+]$ activate VGCCs, resulting in intracellular $[\text{Ca}^{2+}]$ increases leading to VSMCs depolarization and contraction (*right*). PGE_2 , which acts through prostaglandin EP_4 receptors (EP_4R) on VSMCs, generates cyclic adenosine monophosphate (cAMP) from intracellular ATP, also producing hyperpolarization and relaxation. PGE_2 levels can be modulated by extracellular lactate levels, which can block reuptake of PGE_2 by prostaglandin transporters (PGT). Lactate levels depend on the oxygen content of the tissue. Conversely, AA taken in by VSMCs can be metabolized to 20-hydroxyeicosatetraenoic acid (20-HETE), a potent VSMC depolarizer, resulting in VSMC contraction. NO released by neurons or endothelial cells can block VSMC 20-HETE production, modulating VSMC contraction and favoring relaxation through facilitation of conversion of guanosine triphosphate (GTP) to cyclic guanosine monophosphate (cGMP) via soluble guanylate cyclase (sGC). Adenosine released by neurons acts on A2R and blocks VSMC VGCC activation leading to VSMCs hyperpolarization and relaxation. In contrast, neuronal release of ATP to VSMCs P2XR and P2YR can increase intracellular $[\text{Ca}^{2+}]$, resulting in depolarization and contraction.

Endothelium. Vasoactive compounds, including ATP, adenosine diphosphate (ADP), uridine triphosphate (UTP), acetylcholine (ACh), and bradykinin (BK), in the blood stream can bind their respective receptors (P2XR, P2YR, muscarinic M3R, and B2R) to initiate signaling pathways in endothelial cells similar to the pathways in astrocytes, with the addition of the diacyl-glycerol (DAG) AA pathway mediated by phospholipase C (PLC), generating vasoactive molecules that are released to VSMCs. Intracellular $[\text{Ca}^{2+}]$ increases initiated by receptor-mediated signaling of endothelium can produce endothelial AA, EETs, and prostacyclin (PGI_2), which act on VSMCs similarly to PGE_2 , to generate VSMC hyperpolarization and relaxation. The intracellular $[\text{Ca}^{2+}]$ rise can also activate endothelial nitric oxide synthase (eNOS) leading to NO production, and endothelial K_{Ca} channels, releasing K^+ that can act on VSMCs as well as hyperpolarizing the endothelium. Endothelial-derived hyperpolarizing factor (EDHF) can also trigger VSMC hyperpolarization. Additionally, shear stress on the endothelial vessel walls and red blood cells (RBCs) due to blood flow triggers ATP release from RBCs and signaling pathways, including activation of endothelial eNOS, and direct production of AA and its metabolites. Endothelial and endothelial-VSMCs gap junctions (GJs) facilitate retrograde endothelial signal propagation and signaling to VSMCs.

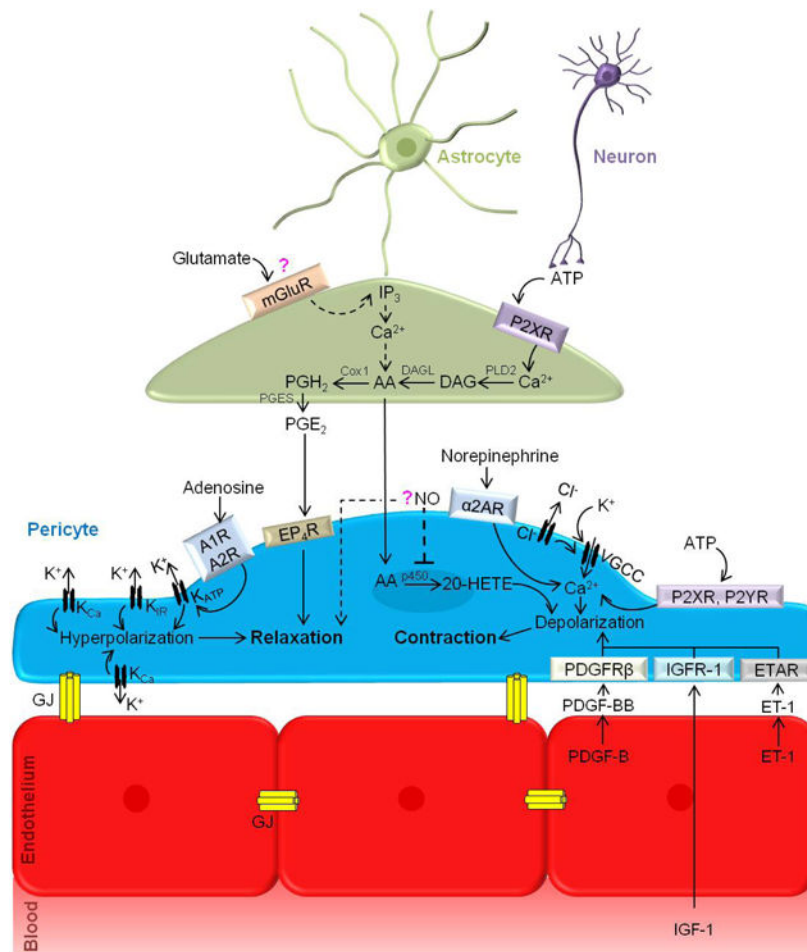


Figure 3. Capillary regulation of cerebral blood flow

Neuronal ATP can activate P2XRs on astrocytes to produce AA via phospholipase D 2 (PLD2)-mediated production of diacylglycerol (DAG) and subsequent metabolism by DAG lipase (DAGL). Cox1 can metabolize AA to produce PGE₂ via prostaglandin H2 (PGH2) and prostaglandin E synthase (PGES), triggering EP₄R on pericytes and leading to pericyte relaxation. AA produced in astrocytes can also diffuse into pericytes and form 20-HETE via p450 leading to pericyte depolarization and contraction. Neuronal activity releases glutamate, which has been shown to activate astrocytic mGluRs, triggering an IP₃-dependent increase in intracellular [Ca²⁺] leading to AA production via the PLA2 pathway. However, recent studies contradict this finding (indicated by dashed lines and question mark). Neurotransmitters adenosine, norepinephrine, and ATP have been demonstrated to alter pericyte contractile state. Specifically, adenosine binds A1 and A2 receptors (A1R, A2R) and activates KATP channels leading to hyperpolarization and relaxation. Also, activation of potassium channels including KCa and possibly KIR results in hyperpolarization of pericytes, decreasing Ca²⁺ entry through voltage-gated channels. Neuronal release of NO, which in pericytes inhibits AA metabolism to 20-HETE, can lead to pericyte relaxation. However, the role of NO in capillary dilation has been questioned (indicated by dashed lines and question mark). Norepinephrine acts through α₂-adrenergic receptors (α₂AR) leading to increased intracellular [Ca²⁺], depolarization and contraction. ATP activation of the

purinergic receptors P2XR or P2YR on pericytes induces depolarizing currents, and increases intracellular $[Ca^{2+}]$ and pericyte contraction. Additionally, neuronal-mediated large increases in extracellular $[K^+]$ activates VGCCs, resulting in pericyte intracellular $[Ca^{2+}]$ increases, depolarization and contraction. Furthermore, several vasoconstrictors, including endothelin-1 (ET-1), platelet-derived growth factor-B (PDGF-BB), both secreted by vascular endothelial cells, or blood-derived insulin-like growth factor (IGF-1), act on their respective receptors (endothelin A receptors (ETAR), $Pdgfr\beta$ and IGFR-1) leading to depolarization of pericytes and Ca^{2+} entry into the cell. Endothelial-endothelial and pericyte-endothelial gap junctions allow fast and direct exchange of small molecules.

Author Manuscript

Author Manuscript

Author Manuscript

Author Manuscript

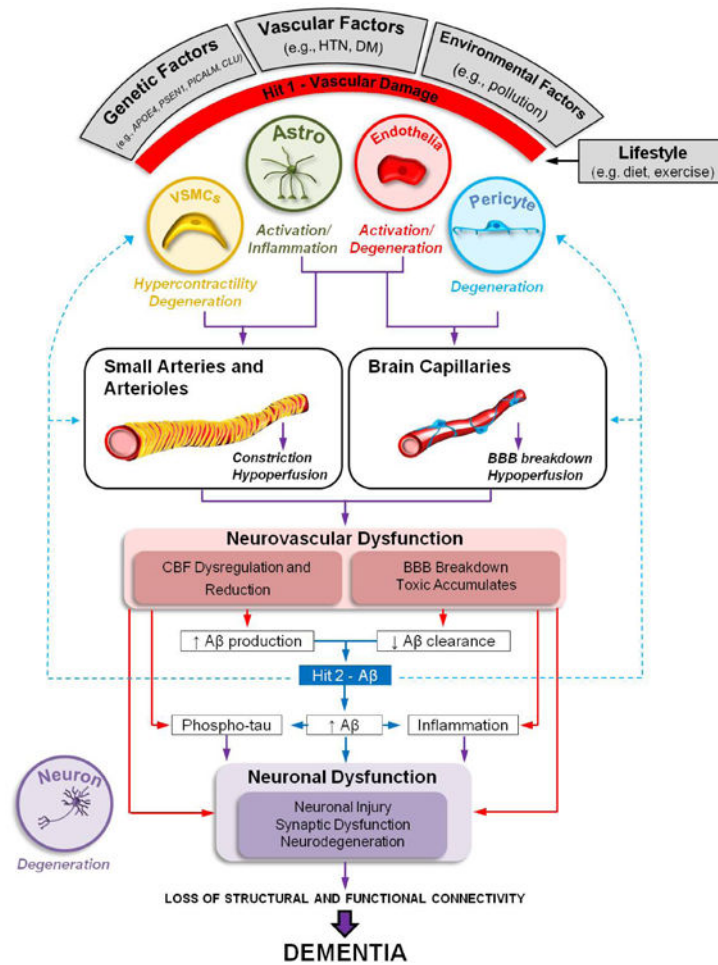


Figure 4. Neurovascular dysfunction in Alzheimer's disease: two-hit vascular hypothesis
 Several *genetic risk factors* for Alzheimer's disease (AD) (e.g., apolipoprotein E4 gene (*APOE4*), Presenilin-1 mutations (*PSEN1*), Phosphatidylinositol Binding Clathrin Assembly Protein (*PICALM*), Clusterin (*CLU*), *vascular factors* (e.g., hypertension (HTN), diabetes mellitus (DM)), and *environmental factors* (e.g., pollution) lead to neurovascular dysfunction and damage to small arteries, arterioles and brain capillaries via amyloid- β ($A\beta$)-independent (*hit 1*, red) and/or $A\beta$ -dependent (*hit 2*, blue) pathway. Both pathways interact and converge on blood vessels, and can independently or synergistically (*purple lines*) lead to neuronal injury, synaptic dysfunction and neurodegeneration contributing to dementia. Lifestyle can modify the effects of these hits; for example a moderate exercise and diet have beneficial effects on cardiovascular and cerebrovascular system.

AD affects different cell types of the neurovascular unit. For example, VSMCs hypercontractility and degeneration leads to aberrant responses of small arteries and arterioles, cerebral blood flow (CBF) dysregulation and reductions independently of $A\beta$ or in $A\beta$ -dependent manner. In the $A\beta$ pathway, damage to small arteries and arterioles are often associated with amyloid angiopathy, and rupture of the vessel wall with microhemorrhages. Degeneration of pericytes leads to loss of capillary dilation in response to neuronal stimuli, hypoperfusion and blood-brain barrier (BBB) breakdown with accumulation of blood-derived toxins and fluid in the perivascular spaces. Both, $A\beta$ -

independent (e.g., hypoxia, ischemia) and A β -dependent mechanisms contribute to changes in capillary circulation. Endothelial damage leads to loss of endothelial-dependent vasodilation, CBF dysregulation and reductions. Activation of astrocytes and microglia mediates inflammatory response and release of vasoactive cytokines and chemokines, further comprising CBF regulation and BBB integrity.

Damage to blood vessels can initiate a cascade of events leading to A β accumulation in brain (*hit 1*), which accelerates the A β -dependent pathway of neurodegeneration (*hit 2*). For example, brain ischemic changes (*hit 1*) lead to increased A β production by stimulating expression of α and γ secretases, enzymes mediating A β generation, whereas BBB dysfunction in A β clearance receptors lipoprotein receptor and multidrug resistance protein 1 leads to faulty A β clearance and retention in brain.

Reduced CBF (*hit 1*) and elevated A β (*hit 2*) can each independently or synergistically lead to tau phosphorylation (Phospho-tau) and tau pathology in neurons, and worsen neuroinflammation. When combined, they accelerate neuronal damage and injury.