

## Frailty index as a predictor of all-cause and cause-specific mortality in a Swedish population-based cohort

Miao Jiang<sup>1</sup>, Andrea Dawn Foebel<sup>1</sup>, Ralf Kuja-Halkola<sup>1</sup>, Ida Karlsson<sup>1</sup>, Nancy Lee Pedersen<sup>1</sup>, Sara Hägg<sup>1</sup>, Juulia Jylhävä<sup>1</sup>

<sup>1</sup>The Department of Medical Epidemiology and Biostatistics, Karolinska Institutet, Stockholm, Sweden

Correspondence to: Juulia Jylhävä; email: [juulia.jylhava@ki.se](mailto:juulia.jylhava@ki.se)

**Keywords:** frailty, early risk marker, competing risks, cardiovascular disease mortality, cancer mortality

**Received:** November 9, 2017

**Accepted:** December 11, 2017

**Published:** December 19, 2017

**Copyright:** Jiang et al. This is an open-access article distributed under the terms of the Creative Commons Attribution License (CC BY 3.0), which permits unrestricted use, distribution, and reproduction in any medium, provided the original author and source are credited.

### ABSTRACT

Frailty is a complex manifestation of aging and associated with increased risk of mortality and poor health outcomes. However, younger individuals (under 65 years) are less-studied in this respect. Also, the relationship between frailty and cause-specific mortality in community settings is understudied. We used a 42-item Rockwood-based frailty index (FI) in the Swedish Adoption/Twin Study of Aging (n=1477; 623 men, 854 women; aged 29-95 years) and analyzed its association with all-cause and cause-specific mortality in up to 30-years of follow-up. Deaths due to cardiovascular disease (CVD), cancer, dementia and other causes were considered as competing risks. The FI was independently associated with increased risk for all-cause mortality in younger (<65 years; HR per increase in one deficit 1.11, 95%CI 1.07-1.17) and older (≥65 years; HR 1.07, 95%CI 1.04-1.10) women and in younger men (HR 1.05, 95%CI 1.01-1.10). In cause-specific mortality analysis, the FI was strongly predictive of CVD mortality in women (HR per increase in one deficit 1.13, 95%CI 1.09-1.17), whereas in men the risk was restricted to deaths from other causes (HR 1.07, 95%CI 1.01-1.13). In conclusion, the FI is a strong mortality predictor especially among younger individuals and its associations with cause-specific mortality are sex-specific.

### INTRODUCTION

Frailty is among the most complex and problematic conditions in older individuals. It is a state of increased vulnerability to stressors and adverse outcomes due to a multisystem loss of homeostasis [1]. The importance of frailty is highlighted by its consistent association with all-cause mortality and adverse aging outcomes, such as institutionalization, physical limitations, disability, recurrent hospitalizations, falls and fractures [2, 3]. Frailty has also been shown to be strongly predictive of post-operative mortality, complications, and prolonged length of stay in older surgical patients [4]. In individuals aged 65 years and older, a dose-responsive reduction in survival probability has been observed with increasing levels of frailty [2]. It has been estimated that

that up to 5% of deaths among older individuals could be delayed by preventing frailty [2].

There are currently two common models of frailty: the Fried frailty phenotype [5] and the Rockwood frailty index (FI) [6]. The former sees frailty as a syndrome with loss of physical function and it classifies individuals as non-frail, pre-frail and frail, whereas the latter sees frailty as a continuous risk state assessed as the number of accumulated health deficits. Although both measures are valid predictors of adverse outcomes and demonstrate overlap in the identification of frailty [7], the FI – being a continuous measure – shows more sensitivity at the lower end of the frailty continuum [8]. In addition, the FI may provide better resolution in younger populations as it also predicts adverse out-

comes among individuals who are classified as non-frail by the Fried phenotypic model [9]. Nevertheless, despite the acknowledged need to screen all individuals aged 70 years and older for frailty [10], a consensus is still lacking as to how to best assess it in clinical settings.

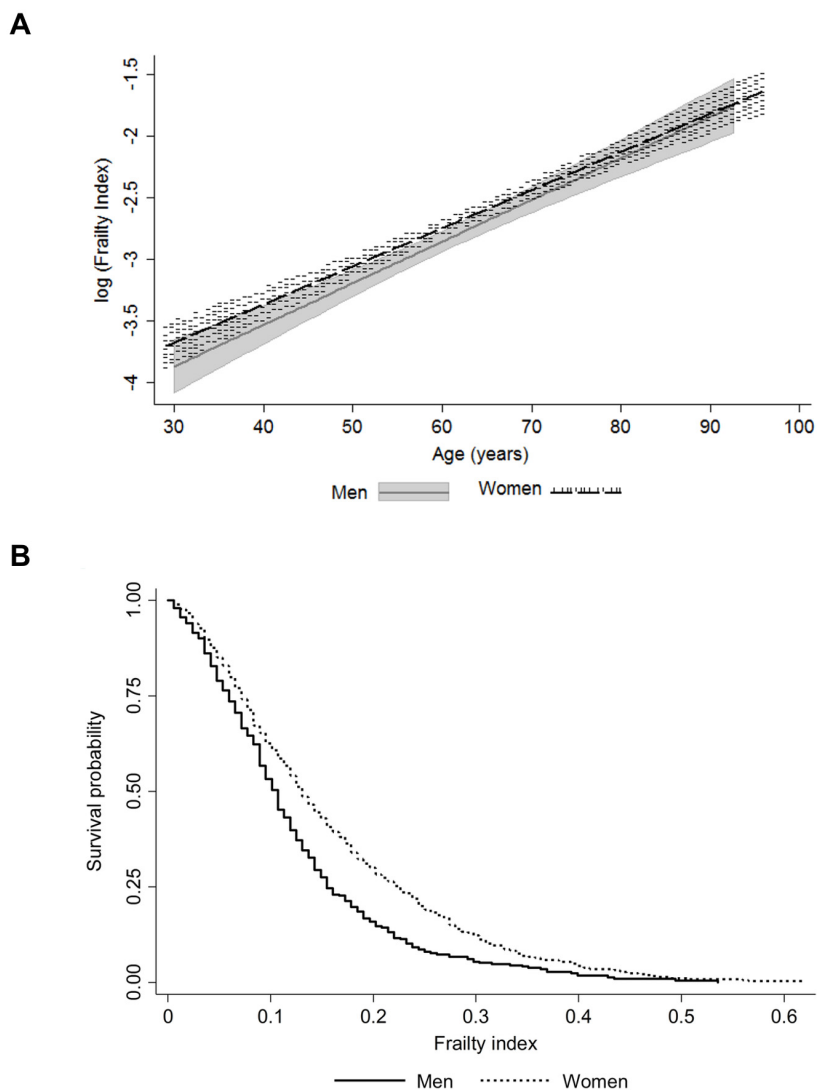
Whether these frailty instruments also predict mortality among the younger individuals (under 65 years), whose levels of frailty are generally much lower and times to death are longer, is less-studied. Sex differences in this respect have also received little attention. A growing body of evidence links frailty to the development of cardiovascular disease (CVD) [11, 12] and dementia [13], and the presence of frailty is also known to worsen the outcomes of these diseases as well as cancer [14]. However, less is known about the association of frailty with deaths due to these causes and especially in com-

munity settings. To this end, we analyzed the predictive ability of a 42-item Rockwood-based FI, herein referred to as the FI, for all-cause mortality in a population-based cohort of individuals aged from 29 to 95 years at baseline with a 30-year mortality follow-up. We also elucidated the relationship between the FI and CVD-, cancer-, dementia- and other-cause mortality.

## RESULTS

### The FI in the study sample

Characteristics of the study population are presented in Table 1. The distribution of the FI was skewed with a long right tail (Supplementary Figure 1) and the association with age was exponential in both men and women (Figure 1a). The maximum value of FI was 0.619



**Figure 1.** Association of the frailty index with age (a); the shaded areas around the lines represent the 95% confidence intervals for the mean) and mortality by sex (b).

in women and 0.536 in men. These findings align with the existing literature on the maximum FI value, 0.7

rather than 1.0, which indicates that regardless of the study population and the deficits included in the FI,

**Table 1. Characteristics of the study population.**

	All (n=1477) Median (IQR)		Men (n=623) Median (IQR)		Women (n=854) Median (IQR)		p*
Age (yr)	63.2	(21.0)	62.9	(19.4)	63.5	(21.8)	0.037
BMI (kg/m <sup>2</sup> )	24.2	(4.4)	24.7	(3.8)	23.6	(4.8)	<0.001
Smoking status <sup>a</sup>							
Never	1032	(70.7)	397	(64.0)	635	(75.6)	
Previous	87	(6.0)	52	(8.4)	35	(4.2)	
Current	341	(23.4)	171	(27.6)	170	(20.2)	<0.001
Education <sup>a</sup>							
Primary education	800	(57.7)	325	(55.5)	475	(59.4)	
Lower secondary or Vocational education	383	(27.6)	148	(25.3)	235	(29.4)	
Upper secondary education	109	(7.8)	62	(10.6)	47	(5.9)	
Tertiary education	49	(6.9)	51	(8.7)	43	(5.4)	<0.001
FI	0.077	(0.095)	0.071	(0.083)	0.083	(0.107)	0.007
FI categorized <sup>a</sup>							
Relatively fit	288	(19.5)	122	(19.6)	166	(19.4)	
Less fit	622	(42.1)	279	(44.5)	343	(40.2)	
Least fit	401	(27.2)	175	(28.1)	226	(26.5)	
Frail	166	(11.2)	47	(7.5)	119	(13.9)	0.002
FI categorized <sup>a</sup> younger individuals (<65 yrs)							
Relatively fit	224	(27.8)	101	(28.6)	123	(27.1)	
Less fit	378	(48.0)	173	(49.0)	214	(47.1)	
Least fit	155	(19.2)	66	(18.7)	89	(19.6)	
Frail	41	(5.0)	13	(3.7)	28	(6.2)	0.422
FI categorized <sup>a</sup> older individuals (≥65 yrs)							
Relatively fit	64	(9.6)	21	(7.7)	43	(10.8)	
Less fit	235	(35.1)	106	(39.3)	129	(32.3)	
Least fit	246	(36.7)	109	(40.4)	137	(34.3)	
Frail	125	(18.7)	34	(12.6)	91	(22.8)	0.003
All-cause mortality							
Died during follow-up <sup>a</sup>	975	(66.1)	432	(69.3)	543	(63.6)	0.021
Median time to death	14.8	(12.8)	13.7	(13.0)	15.5	(12.8)	0.001
Cancer mortality							
Died during follow-up <sup>a</sup>	232	(15.7)	143	(23.0)	89	(10.4)	<0.001
Median time to death	12.2	(11.4)	11.5	(12.7)	13.1	(9.6)	0.223
CVD mortality							
Died during follow-up <sup>a</sup>	347	(23.5)	160	(25.7)	187	(21.9)	0.090
Median time to death	13.7	(12.3)	13.2	(12.7)	14.6	(12.0)	0.081
Dementia mortality							
Died during follow-up <sup>a</sup>	78	(5.3)	20	(3.2)	58	(6.8)	0.002
Median time to death	19.0	(7.8)	19.4	(6.1)	18.0	(9.0)	0.672
Other causes of mortality							
Died during follow-up <sup>a</sup>	258	(17.5)	89	(14.3)	169	(19.8)	0.006
Median time to death	14.1	(11.7)	14.1	(11.2)	13.6	(11.8)	0.743

Note: n=1442 for information on BMI, n=1460 for smoking status and n=1386 for education. The follow-up time was 30 years for all-cause mortality and 27 years for cause-specific mortality. Other causes of mortality include those not dying of cancer, CVD or dementia

<sup>a</sup>Values are n (%)

\*p for difference between men and women, Mann-Whitney's test for median values and  $\chi^2$ -test for dichotomous variables

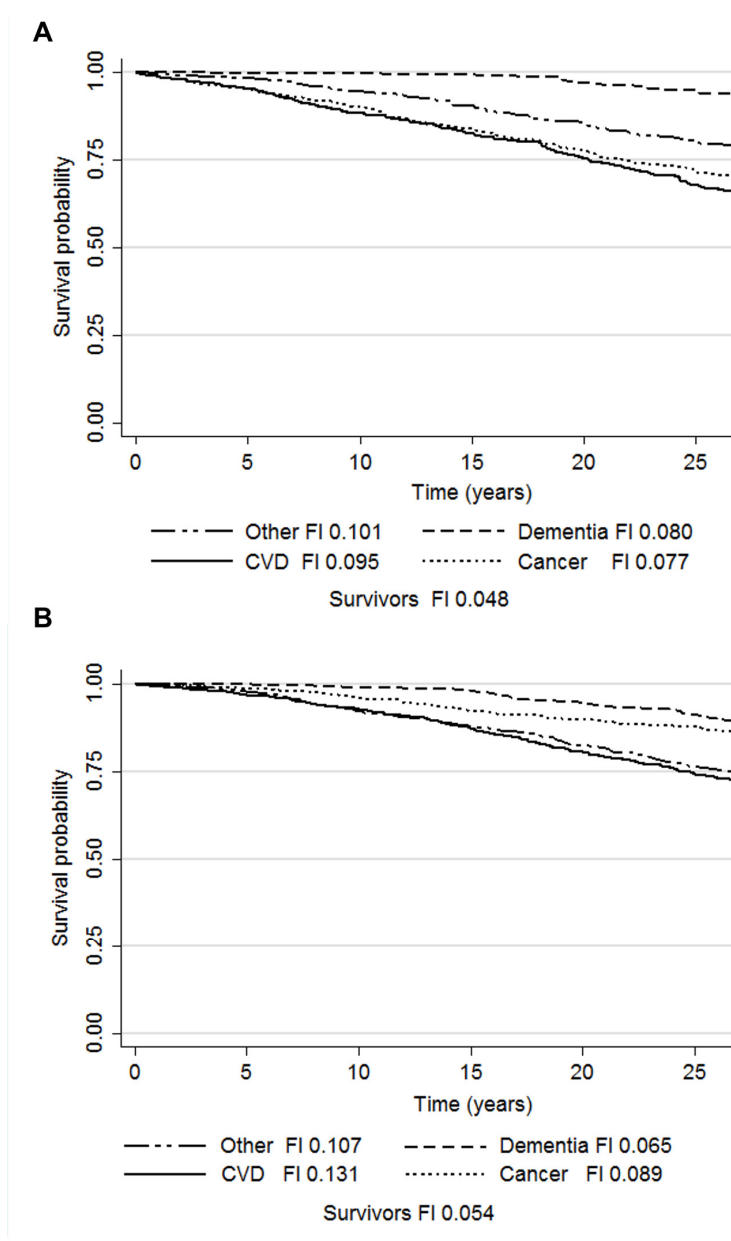
Abbreviations: BMI, body mass index; CVD, cardiovascular disease; FI, frailty index; IQR, interquartile range

survival beyond FI 0.7 is unlikely [6, 15]. Although the median level of frailty was relatively low in this sample (Table 1), sex differences across the age range and a higher mortality risk for men at all levels of FI were apparent (Figure 1b).

### All-cause mortality

Men had a higher all-cause mortality rate and a lower median time to death than women during the 30-year follow-up (Table 1). The categorized FI levels demonstrated a dose-response increase in mortality risk with increased frailty in both men and women (Supplementary Figure 2). Of the tested variables (age,

FI, education, smoking and BMI) only age, smoking and FI remained significantly associated with mortality in the multivariate Cox models for men and women (Table 2). For BMI, only a linear association with mortality was considered, as no sign of an existence of a U-shaped relationship was observed. This was verified as the -2 log likelihood between the Cox regression model with the linear term of BMI and the model with both the linear term and the quadratic term of BMI was non-significant ( $p=0.128$ ). When the models were further stratified by age, the associations between FI and mortality were similar in all but the older men where the association was non-significant (Table 2).



**Figure 2.** Kaplan-Meier survival probabilities and median frailty index levels according to the causes of death in men (a) and women (b). Abbreviations: CVD, cardiovascular disease; FI, frailty index.

**Table 2. Cox regression for all-cause mortality with a 30-year follow-up. Age, smoking and FI were all analyzed in the same model.**

	All			Young (<65 years)			Old (≥65 years)		
	HR	95%CI	p	HR	95%CI	p	HR	95%CI	p
<b>Men</b>									
Age	1.12	1.11-1.14	<0.001	1.12	1.09-1.15	<0.001	1.11	1.08-1.13	<0.001
Smoking	1.23	1.10-1.38	<0.001	1.20	0.99-1.44	0.055	1.26	1.09-1.46	0.002
FI	1.04	1.01-1.07	0.008	1.05 <sup>a</sup>	1.01-1.10	0.021	1.03	0.99-1.07	0.097
<b>Women</b>									
Age	1.13	1.12-1.15	<0.001	1.13	1.10-1.16	<0.001	1.14	1.10-1.17	<0.001
Smoking	1.20	1.04-1.37	0.011	1.31	1.09-1.58	0.004	1.08	0.88-1.31	0.456
FI	1.08 <sup>a</sup>	1.06-1.11	<0.001	1.11	1.07-1.17	<0.001	1.07 <sup>a</sup>	1.04-1.10	<0.001

Note: Numbers of deaths/individuals in each model were as follows: all men 430/620; young men 166/352; old men 264/268; all women 532/840; young women 156/452; old women 376/388

<sup>a</sup>Proportional hazards assumption not met: a time-varying coefficient produced and presented in Supplementary Figure 3

Abbreviations: CI, confidence interval; FI, frailty index; HR, hazard ratio

The Schoenfeld and scaled Schoenfeld residual plots with the time-varying coefficients for FI from the models where FI violated the PH assumption (younger men, all women and older women) are presented in Supplementary Figure 3. Overall, the violations were mild; no clear patterns creating the non-zero slopes were observed and the time-varying coefficients indicated 0.4-0.8% decrease in the HR for FI per year. Hence the HR for FI in these models is interpreted as a time-averaged effect.

### Cause-specific mortality

Cause-specific mortality rates and median times to death during the 27-year follow-up are presented in Table 1. The Kaplan-Meier survivor function plots for the competing risks and the median FI in each group are presented in Figure 2. The results of the age and smoking status-adjusted cause-specific hazard (CHR) and sub-distribution hazard (SHR) models are presented in Table 3. In women, the CHR models demonstrated that FI predicted deaths due to cancer (HR 1.06, 95%CI 1.01-1.12), CVD (HR 1.13, 95%CI 1.09-1.17) and other causes (HR 1.07, 95%CI 1.03-1.12). In the Cox models run as a sensitivity analysis for the consensus classifications for CVD and cancer deaths, the HRs for the FI remained essentially the same (cancer mortality HR 1.06, 95%CI 1.00-1.13, p=0.05; CVD mortality HR 1.12, 95%CI 1.08-1.16), yet the former association was attenuated to borderline significance. Adjusting the CVD mortality model for CVD status at baseline did not change the results for FI (HR 1.11, 95%CI 1.06-1.16), whereas adjusting the cancer mortality model for cancer diagnosis at study baseline attenuated the FI's

### DISCUSSION

In this study, we created a 42-item Rockwood FI in a population-based Swedish cohort and validated it by showing that its distribution and associations with age and sex are in agreement with those reported previously [6, 8, 9, 16]. The categorized FI also demonstrated a dose-response relationship with mortality, in keeping with the observations by Rockwood et al. (2011) [16]. An increase in the FI, when treated as a continuous variable, was directly associated with all-cause mortality throughout the 30-year follow-up. The association was independent of age, smoking status, education and BMI. Stratification by sex and into younger (<65 years) and older (≥65 years) ages revealed that the association was strongest among younger women where accumulation of one deficit was associated with an 11% increase in the mortality risk. Among older women, the corresponding increase in the risk was 7%. In the younger men accumulation of one deficit was associated with a 5% increase in the mortality risk, whereas among older men the association was non-significant. The two approaches taken to analyze the relationships between FI and cause-specific mortality, the CHR and SHR, unequivocally demonstrated that higher FI is associated with CVD mortality in women. That is, FI predicts CVD mortality in the presence of competing risks and regardless of the nature of the associations between the FI and the other causes of death. A suggestive association was observed for cancer mortality in women as the association was significant only in the CHR model. In men, the FI was predictive only of other-cause mortality and the finding was restricted to the CHR model.

**Table 3. Cause-specific mortality with a 27-year follow-up. Age, smoking and FI were all analyzed in the same model.**

	Cause-specific hazards			Subdistribution hazards		
	HR	95%CI	p	SHR	95%CI	p
<b>Men</b>						
Cancer mortality						
Age	1.07	1.05-1.09	<0.001	1.02	1.01-1.04	0.001
Smoking	1.19	0.98-1.45	0.087	1.10	0.91-1.34	0.325
FI	1.03	0.97-1.09	0.357	0.99	0.91-1.06	0.769
CVD mortality						
Age	1.15	1.12-1.18	<0.001	1.08	1.06-1.09	<0.001
Smoking	1.18	1.04-1.37	0.065	0.97	0.80-1.19	0.777
FI	1.03	0.99-1.08	0.158	0.99	0.94-1.04	0.759
Dementia mortality						
Age	1.25	1.17-1.33	<0.001	1.05	1.02-1.08	<0.001
Smoking	0.89	0.49-1.61	0.699	0.71	0.41-1.23	0.224
FI	1.06	0.91-1.23	0.467	0.97	0.83-1.13	0.672
Other causes						
Age	1.16	1.12-1.19	<0.001	1.06	1.04-1.08	<0.001
Smoking	1.45	1.15-1.80	0.004	1.17	0.92-1.50	0.198
FI	1.08	1.02-1.14	0.005	1.04	0.98-1.11	0.178
<b>Women</b>						
Cancer mortality						
Age	1.08	1.06-1.11	<0.001	1.03	1.02-1.05	<0.001
Smoking	1.31	0.98-1.75	0.067	1.20	0.89-1.62	0.232
FI	1.06	1.01-1.12	0.031	1.00	0.95-1.05	0.866
CVD mortality						
Age	1.14	1.11-1.16	<0.001	1.06	1.04-1.07	<0.001
Smoking	1.06	0.98-1.75	0.648	0.94	0.72-1.23	0.640
FI	1.13	1.09-1.17	<0.001	1.07 <sup>a</sup>	1.02-1.11	0.001
Dementia mortality						
Age	1.18	1.14-1.22	<0.001	1.06	1.04-1.08	<0.001
Smoking	1.23	0.82-1.82	0.315	0.96	0.64-1.44	0.855
FI	0.94	0.85-1.04	0.247	0.87	0.80-0.96	0.004
Other causes						
Age	1.15	1.12-1.17	<0.001	1.07	1.05-1.09	<0.001
Smoking	1.37	1.09-1.72	0.007	1.19	0.95-1.49	0.136
FI	1.07	1.03-1.12	0.001	0.99	0.95-1.03	0.725

<sup>a</sup>Proportional hazards assumption not met: HR for FI\*time interaction=0.988

Abbreviations: CI, confidence interval; CVD, cardiovascular disease; FI, frailty index; HR, hazard ratio

Our results add to the understanding of the significance of frailty in several aspects. We had an exceptionally long follow-up and observed that the frailty-mortality relationship extends up to 30 years from baseline. In addition, half our sample consisted of younger individuals who are understudied for frailty in comparison to old individuals. We demonstrated that FI was a strong predictor of mortality especially in younger women, where the risk conferred by the increase in frailty was greater than that among the older. This finding is in line with previous results [16] that demonstrated a similar phenomenon in an age, sex and education-adjusted model of 12-year mortality. Hence, our results further verify the usefulness of FI in early risk stratification. The reason why the association between FI and mortality was not statistically significant in older men is unknown, yet we identified a data-driven explanation for it. CVD was the major cause of mortality among older men and as the FI did not predict CVD deaths in men, the association with all-cause mortality was hence likely attenuated. Similar findings have been reported in a Finnish study where the association between the Fried frailty phenotype and 4-year mortality was no longer significant in old men after adjusting for covariates such as smoking, education and functional capacity [17]. Nevertheless, it should be noted that both the FI and the frailty phenotype have been found to predict mortality in older men in several studies [2, 3].

Our findings are in accordance with a recent meta-analysis reporting that both frailty and pre-frailty predict CVD-related mortality in individuals aged 65 years and older [11]. Sex-differences were not, however, specifically addressed in that work. Related findings have been presented in patients with established CVD or after an acute cardiovascular event where the presence of frailty – defined using different indicators – has been an independent predictor of all-cause mortality [18, 19]. Although the individuals in these studies have generally been older than in our study and the follow-ups have been shorter, our findings are given some support by an Icelandic study that demonstrated a predictive validity of frailty on incident CVD, including deaths due to cardiovascular causes [12]. The association was stronger in women than in men and independent of subclinical atherosclerotic manifestations. Because frailty and subclinical CVD may share common biological pathways, a causal relationship is unlikely. Nevertheless, a mutual reciprocal relationship has been proposed; frailty may lead to CVD and CVD can also lead to frailty [19]. Notwithstanding that both scenarios are possible, our results provide new insight to the matter by demonstrating that FI predicts CVD mortality, regardless of CVD status at baseline, age and smoking. This

observation may also be indicative of the type of vulnerability that the FI reflects in women. Given that our follow-up for cause-specific mortality spanned 27 years and the median time to CVD death in women was 14.6 years, our observation is of interest when considering FI as an early risk assessment tool.

The results on cancer mortality in women warrant further confirmation as the association was significant only in the CHR model. This association was also attenuated after adjusting for cancer diagnosis at study baseline, indicating that it was largely driven by those individuals who already had cancer. The SHR for cancer-specific death in women was 1.00, suggesting that there is no cause-specific association between FI and cancer death. The cause-specific risk is likely largely overruled by the absolute risk observed between FI and CVD deaths. The CHR model result nevertheless suggests that there is an instantaneous risk between increased frailty and cancer mortality. Although this an interesting finding that warrants further investigation, we wish to caution against too strong interpretation as the number of cancer deaths in women was rather small. It is nevertheless noteworthy that despite the higher number of cancer deaths among men, no associations were observed, suggesting that the potential cancer mortality-related vulnerability reflected by the FI is specific to women. Our results in women align with the observations in a study of breast cancer patients where frailty was shown to be a predictor of both all-cause and breast cancer mortality irrespective of treatment differences between the robust and the frail individuals [20]. A systematic review has also demonstrated that frailty is an independent predictor of up to 10-year all-cause mortality in patients with various cancers [14]. Together with these observations, our results give support to the notion that frailty can predispose to cancer-related vulnerability, possibly through treatment intolerance and postoperative complications [14].

The finding of a lower FI being predictive of dementia mortality in the SHR model may be attributable to the fact that those who died of dementia had lower FI levels at baseline and longer median times to death compared to the other causes. The SHR model interprets this as an association between lower FI and dementia mortality, as in the risk set there is a large proportion of individuals who had already died due to the other causes and had higher FI values. Furthermore, there is also a biological way to interpret the result; those who died of dementia can be considered as physically healthy agers as they escaped deaths due to other causes at midlife and younger old ages and survived up to very old ages. In this sense, lower FI relates to healthy aging and resilience. Lastly, the association may also reflect a bias in reporting dementia as a cause of death; it has

become more common nowadays, so those who have dementia recorded as a cause of death are by necessity older. However, as the association in the CHR model was non-significant, our data do not allow conclusive inferences on this relationship. However, we can conversely argue that the FI does not capture the vulnerability to dementia death in community settings, yet in older ages frailty has been shown to be predictive of dementia diagnosis [13].

The only model where the FI conferred a similar increased risk in men and women was the CHR approach on other-cause mortality. In fact, the other-cause mortality was the only model where FI was significant in men. Moreover, the median FIs at baseline showed greater differences across the causes of death i.e., CVD, cancer, dementia and other, in women than in men (Figure 2). Hence, it appears that the FI-related mortality risk is distributed evenly between the different causes in men, whereas in women it is largely confined to CVD deaths. FI can thus be considered to represent a different type of vulnerability in men and women – a finding that may add to the understanding of the frailty paradox with regards to the greater overall risk of death in men across all levels of frailty [21].

In conclusion, our results demonstrate that that FI is a prognostic survivorship factor already at younger ages (<65 years) and that the association is stronger in women. When different causes of death are considered, FI can best identify women at risk of CVD death and to a lesser degree the risk of other-cause death. In men, FI can be understood as more of a general vulnerability factor as the risk appears to be evenly distributed between the causes and confined to the other-cause mortality. However, more research on this topic is required as our population was rather small for a cause-specific mortality analysis. Moreover, this was the first study to assess the predictive value of FI on mortality in a competing-risks setting.

## MATERIALS AND METHODS

### Participants

The Swedish Adoption/Twin Study of Aging (SATSA) [22] is a longitudinal population-based cohort of same-sexed twins that is drawn from the Swedish Twin Registry (STR) [23]. SATSA was initiated in 1984 (n=2018) and included both mailed questionnaires and in-person testing waves. The present study involves both single and pair responders (n=1477; 623 men, 854 women; aged 29-95 years) who returned the second questionnaire sent out in 1987. The questionnaires assess physical and mental health status, activities of daily living, wellbeing, health-related behavior with

respect to smoking, alcohol consumption and use of prescribed drugs, family and social environments and personality dimensions (as documented in [24]). The study has received ethical approval from the Regional Ethics Review Board, Stockholm.

### Assessment of frailty

We constructed the FI in SATSA based on the self-reported questionnaire data using the Rockwood deficit accumulation model according to the standard procedure [6, 16]. The Rockwood FI uses health deficits that can be defined as symptoms, signs, disabilities and diseases that cover a wide range of systems, associate with health status and have a prevalence of  $\geq 1\%$  in the study population. The selected 42 items and scoring of the deficits are described in the Supplementary Table 1. All items had  $\leq 10\%$  missing data points and only individuals with  $\leq 20\%$  missing answers across the 42 FI items were included. After that, the patterns of missingness were examined, missing data were replaced by multiple imputation (MI) and a sensitivity analysis for the imputed data was performed (Supplementary Methods). Each individual's FI was assessed by counting the number of deficits and dividing the count by the total number of deficits considered. The validity of the FI was assessed by examining its distribution and associations with age and sex. In addition, we tested whether at each given level of frailty, men were more likely to die than women. As further validation to test for a dose-response relationship with the FI and mortality, we subdivided the FI into four categories according to Rockwood et al. (2011): relatively fit ( $FI \leq 0.03$ ), less fit ( $0.03 < FI \leq 0.10$ ), least fit ( $0.10 < FI \leq 0.21$ ) and frail ( $FI > 0.21$ ) [16].

### Mortality

All-cause mortality data, including dates of death, were obtained from linkages of the STR to Swedish national registers through the personal identification number assigned to all residents. The all-cause mortality data used in this study were updated on April 30, 2017, yielding a 30-year follow-up. Cause-specific mortality data were obtained from the Causes of Death Register (CDR) where the latest update was on December 31, 2014, producing a 27-year follow-up period. The CDR records include information about the underlying and contributory causes of death for all individuals who were registered as Swedish residents in the year of their death. Causes of death are recorded using the International Classification of Diseases (ICD) codes, with ICD-7 used prior to 1969, ICD-8 between 1969 and 1986, ICD-9 from 1987 until 1996, and ICD-10 from 1997 and onwards. We considered cancer, CVD (including stroke) and dementia as the specific causes of



death and other causes not falling into these categories were denoted as “other”. The ICD codes included in each cause are presented in the Supplementary Table 2. When more than one cause of death was recorded, a consensus classification was used (Supplementary Table 3) and a sensitivity analysis was performed (Supplementary methods). The causes of death classified as the “other” are shown in Supplementary Table 4.

### **Covariates**

Age at baseline, sex, education, smoking status and BMI were considered as covariates in the survival analyses. Education, smoking status and BMI were assessed from questionnaire data. Education level was classified as 1=primary education, 2=lower secondary or vocational education, 3=upper secondary education and 4=tertiary education. Smoking status was classified as non-smoker (reference category), ex-smoker and current smoker. BMI was calculated as weight divided by height squared (kg/m<sup>2</sup>).

### **Statistical analyses**

The associations between the study variables and sex were tested using the Mann-Whitney test or  $\chi^2$ -test when appropriate. As the FI had a skewed distribution (Supplementary Figure 1), the association between log(FI) and age was tested using Pearson’s rho. Kaplan-Meier survival plots were used to assess differences in mortality rates by sex and FI categories. Age, sex, FI (sum of the deficits), BMI, education (primary education as reference category) and smoking status (non-smokers as reference category) were first tested for their association with mortality in univariate Cox regression models for the whole study population. Significant covariates were then tested in multivariate Cox models. Those covariates that remained significantly associated with all-cause mortality in the whole population were used as the final model covariates. The final models were stratified by sex and further subdivided into the younger and older using the standard definition of old age,  $\geq 65$  years, as the cut point. In all survival models, the sum of the FI deficits (of the 42 considered) was used to obtain hazard HRs that are interpretable as per increase by one FI deficit. In other statistical tests the sum of the deficits divided by 42 was used. Violation of the proportional hazards (PH) assumption was tested by including an interaction term with time with each variable and further inspected using the Schoenfeld and scaled Schoenfeld residual plots. If violation was observed, a time-varying coefficient (HR) was produced for that covariate.

To rigorously assess the relationship between FI and cause-specific mortality, we took two different approaches: the CHR using the conventional Cox regression and a cumulative incidence function (CIF) using the SHR model proposed by Fine and Fray [25] (see Supplementary methods for details). In both approaches, deaths due to cancer, CVD, dementia and other causes were considered as the competing risks (mutually exclusive failures). In the former approach, all the competing events – in our case the deaths due to other causes than the one investigated – are censored at the time of the competing event and are thus removed from the risk set. In the SHR model, those experiencing a competing risk are kept within the risk set which increases the number of individuals in the risk set at the occurrence of each competing event. In other words, the standard survival model (CHR) corresponds to a hypothetical scenario where the only way to die is due to the cause under investigation. If the other causes of death are correlated with the one under investigation, the estimates may become biased and inferences invalid. Hence, the two approaches may produce different results and it has been advocated that both methods should be used side-by-side when assessing competing risks [26]. The SRHs are commonly attenuated compared to HRs derived from the CHR model and especially if the covariate of interest has also an effect on the competing risk(s) [27, 28]. Differences also arise when the competing risks precede or outnumber the risk of interest.

If a significant association was found, an additional analysis performed by adjusting for the diagnosis of the given disease at the study baseline (see Supplementary methods). In all models, clustering of the data in twin pairs was accounted for by computing cluster robust standard errors for the coefficients. P-values  $<0.05$  were considered statistically significant. Statistical analyses were performed using Stata version 14.1 (College Station, TX: StataCorp LP) and SPSS version 24.0 (Armonk, NY: IBM Corp).

### **ACKNOWLEDGEMENTS**

We thank Professor Chandra Reynolds and Professor Deborah Finkel for careful reading of the manuscript and helpful comments. We also thank Professor Kenneth Rockwood for his valuable input in creating the frailty index in our sample.

### **CONFLICTS OF INTEREST**

The authors have no conflicts of interest to declare.

## FUNDING

The SATSA study was supported by NIH grants R01 AG04563, AG10175, AG028555, the MacArthur Foundation Research Network on Successful Aging, the Swedish Council for Working Life and Social Research (FAS/FORTE) (97:0147:1B, 2009-0795), and the Swedish Research Council (825-2007-7460, 825-2009-6141, 521-2013-8689 and 2015-03255). This study is supported by the JPND/Swedish Research Council (2015-06796), FORTE (2013-2292), the Loo & Hans Osterman Foundation, the Foundation for Geriatric Diseases, the Magnus Bergwall Foundation, and the Strategic Research Program in Epidemiology at Karolinska Institutet.

## REFERENCES

1. Clegg A, Young J, Iliffe S, Rikkert MO, Rockwood K. Frailty in elderly people. *Lancet*. 2013; 381:752–62. [https://doi.org/10.1016/S0140-6736\(12\)62167-9](https://doi.org/10.1016/S0140-6736(12)62167-9)
2. Shamliyan T, Talley KM, Ramakrishnan R, Kane RL. Association of frailty with survival: a systematic literature review. *Ageing Res Rev*. 2013; 12:719–36. <https://doi.org/10.1016/j.arr.2012.03.001>
3. Vermeiren S, Vella-Azzopardi R, Beckwée D, Habbig AK, Scafoglieri A, Jansen B, Bautmans I, Bautmans I, Verté D, Beyer I, Petrovic M, De Donder L, Kardol T, et al, and Gerontopole Brussels Study group. Frailty and the Prediction of Negative Health Outcomes: A Meta-Analysis. *J Am Med Dir Assoc*. 2016; 17:1163.e1–17. <https://doi.org/10.1016/j.jamda.2016.09.010>
4. Lin HS, Watts JN, Peel NM, Hubbard RE. Frailty and post-operative outcomes in older surgical patients: a systematic review. *BMC Geriatr*. 2016; 16:157. <https://doi.org/10.1186/s12877-016-0329-8>
5. Fried LP, Tangen CM, Walston J, Newman AB, Hirsch C, Gottdiener J, Seeman T, Tracy R, Kop WJ, Burke G, McBurnie MA, and Cardiovascular Health Study Collaborative Research Group. Frailty in older adults: evidence for a phenotype. *J Gerontol A Biol Sci Med Sci*. 2001; 56:M146–56. <https://doi.org/10.1093/gerona/56.3.M146>
6. Searle SD, Mitnitski A, Gahbauer EA, Gill TM, Rockwood K. A standard procedure for creating a frailty index. *BMC Geriatr*. 2008; 8:24. <https://doi.org/10.1186/1471-2318-8-24>
7. Cigolle CT, Ofstedal MB, Tian Z, Blaum CS. Comparing models of frailty: the Health and Retirement Study. *J Am Geriatr Soc*. 2009; 57:830–39. <https://doi.org/10.1111/j.1532-5415.2009.02225.x>
8. Kulminski AM, Ukraintseva SV, Kulminskaya IV, Arbeev KG, Land K, Yashin AI. Cumulative deficits better characterize susceptibility to death in elderly people than phenotypic frailty: lessons from the Cardiovascular Health Study. *J Am Geriatr Soc*. 2008; 56:898–903. <https://doi.org/10.1111/j.1532-5415.2008.01656.x>
9. Theou O, Brothers TD, Mitnitski A, Rockwood K. Operationalization of frailty using eight commonly used scales and comparison of their ability to predict all-cause mortality. *J Am Geriatr Soc*. 2013; 61:1537–51. <https://doi.org/10.1111/jgs.12420>
10. Morley JE, Vellas B, van Kan GA, Anker SD, Bauer JM, Bernabei R, Cesari M, Chumlea WC, Doehner W, Evans J, Fried LP, Guralnik JM, Katz PR, et al. Frailty consensus: a call to action. *J Am Med Dir Assoc*. 2013; 14:392–97. <https://doi.org/10.1016/j.jamda.2013.03.022>
11. Veronese N, Cereda E, Stubbs B, Solmi M, Luchini C, Manzato E, Sergi G, Manu P, Harris T, Fontana L, Strandberg T, Amieva H, Dumurgier J, et al. Risk of cardiovascular disease morbidity and mortality in frail and pre-frail older adults: results from a meta-analysis and exploratory meta-regression analysis. *Ageing Res Rev*. 2017; 35:63–73. <https://doi.org/10.1016/j.arr.2017.01.003>
12. Veronese N, Sigeirsdottir K, Eiriksdottir G, Marques EA, Chalhoub D, Phillips CL, Launer LJ, Maggi S, Gudnason V, Harris TB. Frailty and Risk of Cardiovascular Diseases in Older Persons: The Age, Gene/Environment Susceptibility-Reykjavik Study. *Rejuvenation Res*. 2017rej.2016.1905. <https://doi.org/10.1089/rej.2016.1905>
13. Kojima G, Taniguchi Y, Iliffe S, Walters K. Frailty as a Predictor of Alzheimer Disease, Vascular Dementia, and All Dementia Among Community-Dwelling Older People: A Systematic Review and Meta-Analysis. *J Am Med Dir Assoc*. 2016; 17:881–88. <https://doi.org/10.1016/j.jamda.2016.05.013>
14. Handforth C, Clegg A, Young C, Simpkins S, Seymour MT, Selby PJ, Young J. The prevalence and outcomes of frailty in older cancer patients: a systematic review. *Ann Oncol*. 2015; 26:1091–101. <https://doi.org/10.1093/annonc/mdu540>
15. Rockwood K, Mitnitski A. Limits to deficit accumulation in elderly people. *Mech Ageing Dev*. 2006; 127:494–96. <https://doi.org/10.1016/j.mad.2006.01.002>
16. Rockwood K, Song X, Mitnitski A. Changes in relative fitness and frailty across the adult lifespan: evidence from the Canadian National Population Health Survey. *CMAJ*. 2011; 183:E487–94. <https://doi.org/10.1503/cmaj.101271>
17. Kulmala J, Nykänen I, Hartikainen S. Frailty as a pre-

- dictor of all-cause mortality in older men and women. *Geriatr Gerontol Int*. 2014; 14:899–905. <https://doi.org/10.1111/ggi.12190>
18. Ekerstad N, Swahn E, Janzon M, Alfredsson J, Löfmark R, Lindenberger M, Andersson D, Carlsson P. Frailty is independently associated with 1-year mortality for elderly patients with non-ST-segment elevation myocardial infarction. *Eur J Prev Cardiol*. 2014; 21:1216–24. <https://doi.org/10.1177/2047487313490257>
  19. Afilalo J, Karunanathan S, Eisenberg MJ, Alexander KP, Bergman H. Role of frailty in patients with cardiovascular disease. *Am J Cardiol*. 2009; 103:1616–21. <https://doi.org/10.1016/j.amjcard.2009.01.375>
  20. Mandelblatt JS, Cai L, Luta G, Kimmick G, Clapp J, Isaacs C, Pitcher B, Barry W, Winer E, Sugarman S, Hudis C, Muss H, Cohen HJ, Hurria A. Frailty and long-term mortality of older breast cancer patients: CALGB 369901 (Alliance). *Breast Cancer Res Treat*. 2017; 164:107–17. <https://doi.org/10.1007/s10549-017-4222-8>
  21. Gordon EH, Peel NM, Samanta M, Theou O, Howlett SE, Hubbard RE. Sex differences in frailty: A systematic review and meta-analysis. *Exp Gerontol*. 2017; 89:30–40. <https://doi.org/10.1016/j.exger.2016.12.021>
  22. Finkel D, Pedersen NL. Processing Speed and Longitudinal Trajectories of Change for Cognitive Abilities: The Swedish Adoption/Twin Study of Aging. *Neuropsychol Dev Cogn B Aging Neuropsychol Cogn*. 2004; 11:325–45. <https://doi.org/10.1080/13825580490511152>
  23. Magnusson PK, Almqvist C, Rahman I, Ganna A, Viktorin A, Walum H, Halldner L, Lundström S, Ullén F, Långström N, Larsson H, Nyman A, Gumpert CH, et al. The Swedish Twin Registry: establishment of a biobank and other recent developments. *Twin Res Hum Genet*. 2013; 16:317–29. <https://doi.org/10.1017/thg.2012.104>
  24. Pedersen NL, Swedish Adoption/Twin Study on Aging (SATSA), 1984, 1987, 1990, 1993, 2004, 2007, and 2010. 2015, Inter-university Consortium for Political and Social Research.
  25. Fine JP, Gray RJ. A Proportional Hazards Model for the Subdistribution of a Competing Risk. *J Am Stat Assoc*. 1999; 94:496–509. <https://doi.org/10.1080/01621459.1999.10474144>
  26. Latouche A, Allignol A, Beyersmann J, Labopin M, Fine JP. A competing risks analysis should report results on all cause-specific hazards and cumulative incidence functions. *J Clin Epidemiol*. 2013; 66:648–53. <https://doi.org/10.1016/j.jclinepi.2012.09.017>
  27. Dignam JJ, Zhang Q, Kocherginsky M. The use and interpretation of competing risks regression models. *Clin Cancer Res*. 2012; 18:2301–08. <https://doi.org/10.1158/1078-0432.CCR-11-2097>
  28. Austin PC, Lee DS, Fine JP. Introduction to the Analysis of Survival Data in the Presence of Competing Risks. *Circulation*. 2016; 133:601–09. <https://doi.org/10.1161/CIRCULATIONAHA.115.017719>

## SUPPLEMENTARY MATERIAL

### SUPPLEMENTARY METHODS

#### Multiple imputation

After selection of the 42 items (all with <10% missing data points) that were included in the frailty index (FI) (Supplementary Table 1), we followed the practices previously used by the Rockwood group [1, 2] in excluding all individuals with  $\geq 20\%$  missing data ( $n=160$ , 9.8%) across the FI items and then performed multiple imputation (MI) to replace missing data for 400 individuals. Inspection of the missingness pattern graphics revealed that the values were missing at random i.e., no monotonicity was observed. Constraints (min, max, increment/rounding) for the imputed values were set to match the scoring of the given FI item (Supplementary Table 1). Five rounds of imputations were performed and the pooled mean from the simulations was used as the final value for each missing data point. After that all the item scores were summed and the FI was calculated by dividing the sum by 42. As a sensitivity analysis, we performed a Cox regression analysis for all-cause mortality using age, smoking status and FI as covariates and stratifying by sex first for those individuals with no missing data in the FI items ( $n=1077$ ) and then using imputed data set ( $n=1477$ ). Almost identical estimates were obtained using these data sets (data not shown). Hence, the dataset with the imputed data was used in this study.

#### Cause-specific mortality analyses

Two approaches were taken to analyze the relationship between the FI and cause-specific mortality: a cause-specific hazards model (CHR) based on the “standard” Cox regression and a subdistribution hazards model. The latter is also a Cox model but instead of the hazard ratio (HR) it utilizes a subdistribution hazard ratio (SHR) derived from for the cumulative incidence function (CIF) by Fine and Grey [3]. Heuristically, the SHR model CIF for the  $k$ th cause of death can be defined as:  $CIF_k(t) = \Pr(T \leq t, D = k)$ , where  $D$  denotes the cause of death of interest [4]. The occurrence of  $D$  precludes the subsequent occurrence of deaths due to the other causes and the  $CIF_k(t)$  denotes the probability of experiencing the  $k$ th event before time  $t$  and before the occurrence of death due to the other causes. The SHR thus represents a ratio in a “non-existing” population including also those who experienced death due to the other causes. This approach is more suited for clinical risk predictions where estimating the absolute risk is of more interest than in settings addressing etiological questions and the instantaneous risks [4, 5].

On the other hand, unlike the CHR model, the SHR model has the advantage that it does not assume independent and noninformative censoring. That is, information about a subject’s risk of experiencing one type of event should provide no information about the subject’s risk of experiencing the other type of event. However, human biology often suggests at least some level of dependence between competing risks, yet there is no explicit way to test this assumption in a given data set [4].

Analogously to the all-cause mortality analysis, the cause-specific hazards and subdistribution hazards were modeled separately for men and women, considering deaths due to cancer, CVD, dementia and other causes as the competing risks. If an association between the FI and a risk of interest was observed in the CHR model, a sensitivity analysis for the consensus classification (Supplementary Table 3) was performed by excluding or including individuals with multiple causes of death. That is, for cancer mortality we excluded individuals who also had CVD as a cause of death as cancer overrode CVD in the consensus classification, whereas for CVD mortality we included those who had also cancer as a cause of death. In the case of CVD and cancer mortality, we wished to examine if the association was independent of presence of these diseases and thus performed an additional adjustment for the CVD and cancer status in the CHR models, respectively. Of the 187 women who died of CVD, 118 had CVD at the study baseline whereas of those 89 women who died of cancer 8 had cancer at the study baseline. Having any of the following disorders were considered as CVD: angina pectoris, myocardial infarction, stroke, high blood pressure, claudication, phlebitis, circulation problems in limbs and thrombosis.

### SUPPLEMENTARY REFERENCES

1. Rockwood K, Song X, Mitnitski A. Changes in relative fitness and frailty across the adult lifespan: evidence from the Canadian National Population Health Survey. *CMAJ*. 2011; 183:E487-94.
2. Theou O, Brothers TD, Mitnitski A, Rockwood K. Operationalization of frailty using eight commonly used scales and comparison of their ability to predict all-cause mortality. *J Am Geriatr Soc*. 2013; 61:1537-51.
3. Fine JP, Gray RJ. A Proportional Hazards Model for the Subdistribution of a Competing Risk. *Journal of the American Statistical Association*. 1999; 94:496-509.
4. Austin PC, Lee DS, Fine JP. Introduction to the Analysis of Survival Data in the Presence of Competing Risks. *Circulation*. 2016; 133:601-609.

5. Noordzij M, Leffondré K, van Stralen KJ, Zoccali C, Dekker FW, Jager KJ. When do we need competing risks methods for survival analysis in nephrology? *Nephrology Dialysis Transplantation*. 2013; 28:2670-2677.

## SUPPLEMENTARY TABLES

**Supplementary Table 1. List of the 42 items included in the frailty index and their scoring.**

Item	Scoring
Hearing status	Perfect=0, Good=0.25, Pretty Good=0.5, Bad=0.75, Deaf or almost deaf=1
Vision status	Perfect=0, Good=0.25, Pretty Good=0.5, Bad=0.75, Blind or almost blind=1
Health prevents from doing things normally would like to do	No=0, Somewhat=0.5, Yes=1
Self-reported general health	Good=0, Mediocre=0.5, Bad=1
Cancer or leukemia	No=0, Yes=1
Rheumatoid arthritis	No=0, Yes=1
Arthritis	No=0, Yes=1
Chronic bronchitis or emphysema	No=0, Yes=1
Cataracts	No=0, Yes=1
Chest pain	No=0, Yes=1
Circulation problems in arms or legs	No=0, Yes=1
Persistent cough	No=0, Yes=1
Diabetes	No=0, Yes=1
Goiter or other gland problems	No=0, Yes=1
Heart failure	No=0, Yes=1
Hypertension	No=0, Yes=1
Kidney disease	No=0, Yes=1
Brittle bones	No=0, Yes=1
Sciatica	No=0, Yes=1
Anemia	No=0, Yes=1
Cerebral hemorrhage or blood clot in brain	No=0, Yes=1
Dizziness	No=0, Yes=1
Gastric ulcer	No=0, Yes=1
Allergies/allergic manifestations	No=0, Yes=1
Asthma	No=0, Yes=1
Shower and bathe <sup>1</sup>	No problem=0, Needs help=0.5, Cannot=1
Get in and out of bed <sup>1</sup>	No problem=0, Needs help=0.5, Cannot=1
Dress and undress <sup>1</sup>	No problem=0, Needs help=0.5, Cannot=1
Self-grooming <sup>1</sup>	No problem=0, Needs help=0.5, Cannot=1
Walking <sup>1</sup>	No problem=0, Needs help=0.5, Cannot=1
Trouble getting to toilet in time <sup>1</sup>	No=0, Yes=1
Travel further distances <sup>2</sup>	Can travel alone=0, Can go by taxi=0.5, Needs helper, special assistance or doesn't travel=1
Housework <sup>2</sup>	No problems=0, Needs help=0.5, Doesn't do=1
Prepare meals <sup>2</sup>	Can plan/prepare=0, Can heat up=0.5, Doesn't cook=1
Manage medications <sup>2</sup>	No problems=0, Needs help=0.5, Doesn't do=1
Manage money <sup>2</sup>	No problems=0, Needs help=0.5, Doesn't do=1
Use telephone <sup>2</sup>	Can look up numbers and dial=0, Needs help or doesn't use phone=1

Grocery shopping <sup>2</sup>	Can shop=0, Needs help=0.5, Doesn't shop=1
Feeling lonely <sup>3</sup>	Never, almost never, rather seldom=0 Quite often, always, almost always=1
Feeling depressed <sup>3</sup>	Never, almost never or rather seldom=0 Quite often, always, almost always=1
Consider oneself happy and carefree	No=1, Yes=0
Usually feels tired	No=0, Yes=1

Note: <sup>1</sup>from the instrument of Basic Activities of Daily Living, <sup>2</sup>from the instrument of Instrumental Activities of Daily Living, <sup>3</sup>from the Center for Epidemiologic Studies Depression Scale

**Supplementary Table 2.** ICD codes used to classify the competing risks.

	ICD-7	ICD-8	ICD-9	ICD-10	Surgical code	
<b>Dementia</b>	304-306	290	290	F00-F03		
		293.0-293.1	294B	G30		
			331A-331C	G311		
			331X	G318A		
				F051		
<b>Non-stroke CVD</b>	420	410-414	410-414	I20-I25	984	
		450	440	I70	3068	
		453.33	443.90	443X	I73.9	3080
						3127
						3141
						3158
						FNC
						FND
						FNE
						FNG00
				FNG02		
				FNG05		
<b>Stroke</b>	330	430-431	430-431	I60-I61		
		331.00-331.01	433-434	434	I63-I64	
		331.09	436	436		
		331.99				
		332.00-19				
		332.29				
		334.00-98				
<b>Cancer</b>	140-205	140-209	140-208	C00-C97		
				B21		

Note: Non-stroke CVD and Stroke were considered as CVD-mortality

Abbreviations: ICD, International Classification of Diseases; CVD, cardiovascular disease

**Supplementary Table 3. Consensus classification for the competing risks when more than one cause of death was recorded.**

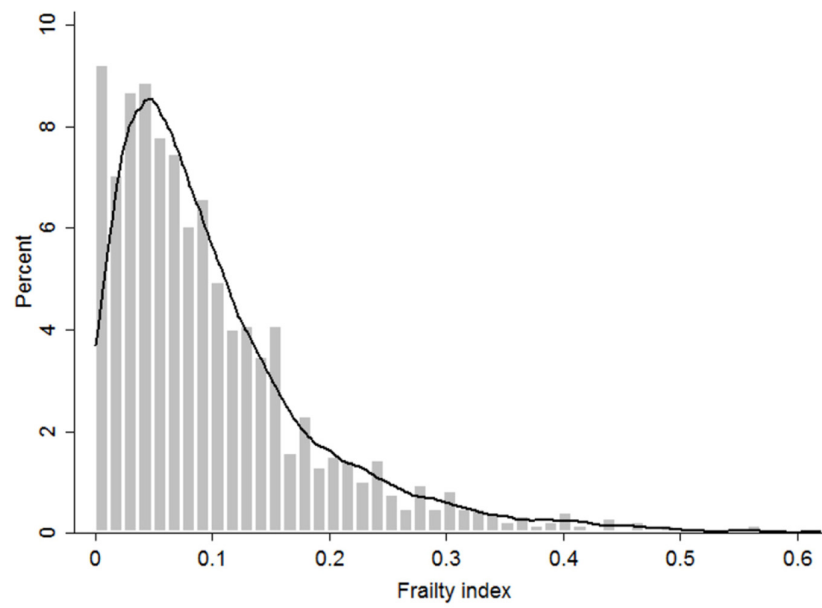
Cancer	CVD	Dementia	Consensus	Count in men	Count in women
-	-	+	Dementia	20	58
-	+	-	CVD	149	159
+	-	-	Cancer	124	73
-	+	+	CVD	11	28
+	+	-	Cancer	15	12
+	-	+	Cancer	3	3
+	+	+	Cancer	1	1

Abbreviations: CVD, cardiovascular disease

**Supplementary Table 4. Causes of deaths included classified as other-cause mortality.**

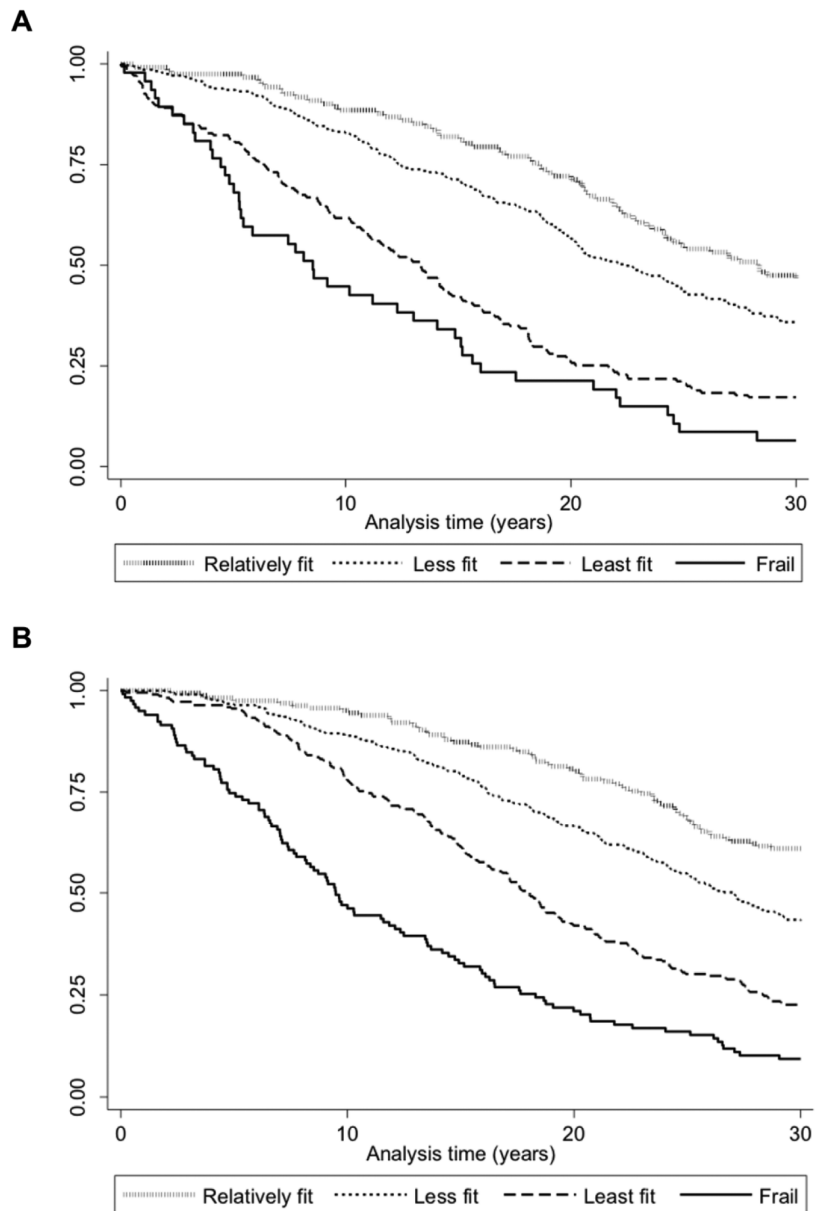
	Men	Women	All
Blood	0	1	1
Circulatory	23	73	96
Congenital	0	1	1
Digestive	8	15	23
Endocrine/metabolic	5	6	11
Genitourinary	2	4	6
Infections	4	6	10
Injuries	7	12	19
Musculoskeletal	2	2	4
Neurological	1	6	7
Psychiatric	3	1	4
Respiratory	26	25	51
Skin	0	2	2
Tumour (non-cancer)	1	2	3
Other	7	13	20
Total	89	169	258

## SUPPLEMENTARY FIGURES

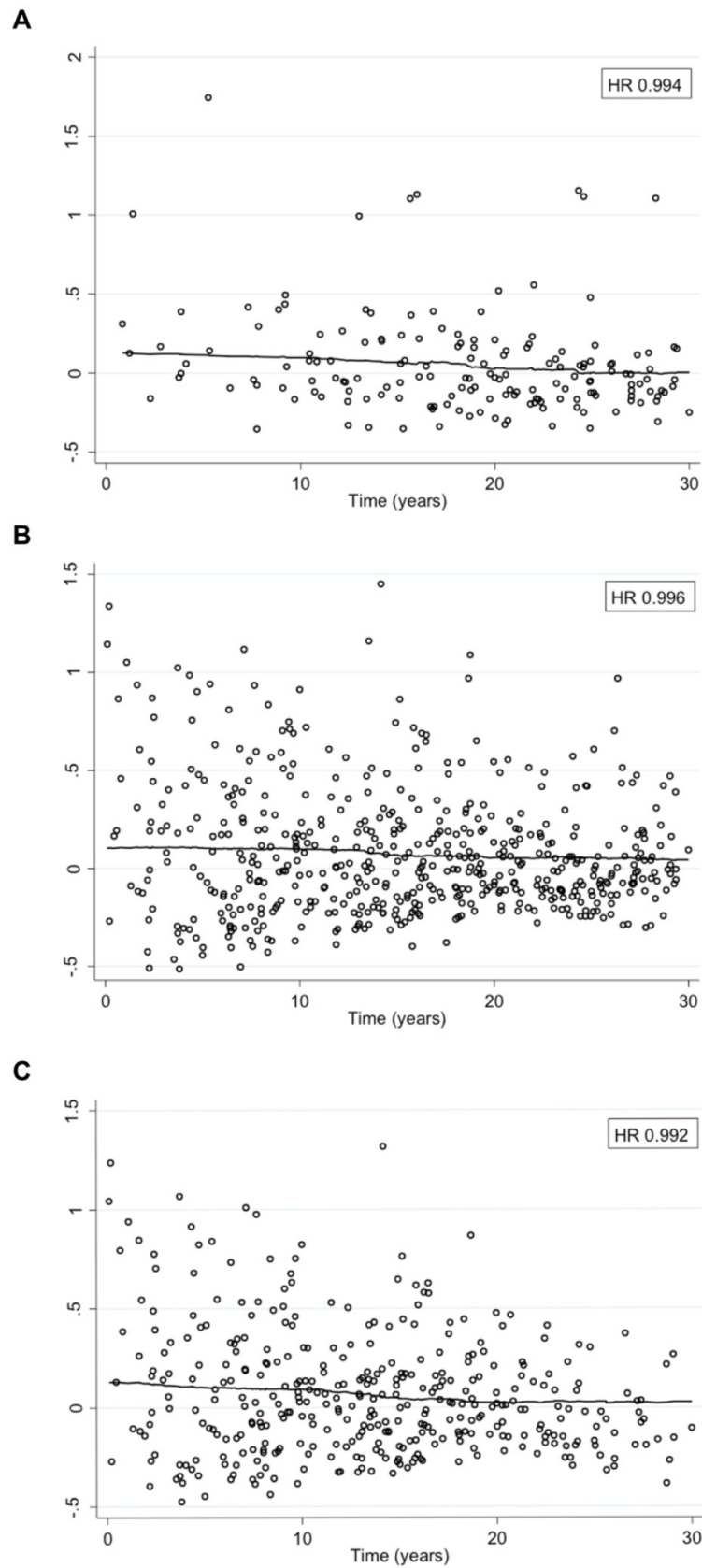


**Supplementary Figure 1.** Distribution of the FI in our sample. The line represents a kernel density plot.





**Supplementary Figure 2.** Kaplan-Meier survival probabilities according to the categorized FI index in men (a) and women (b).



**Supplementary Figure 3.** The Schoenfeld residual plots for the testing of the proportional hazards assumption in the young men (a), all women (b) and young women (c). Hazard ratios (HRs) for the time-varying coefficient of the frailty index are presented top right.