



# HHS Public Access

Author manuscript

*Cell Metab.* Author manuscript; available in PMC 2018 January 24.

Published in final edited form as:

*Cell Metab.* 2018 January 09; 27(1): 263. doi:10.1016/j.cmet.2017.12.009.

## Correction

---

### Human CIA2A-FAM96A and CIA2B-FAM96B Integrate Iron Homeostasis and Maturation of Different Subsets of Cytosolic-Nuclear Iron-Sulfur Proteins

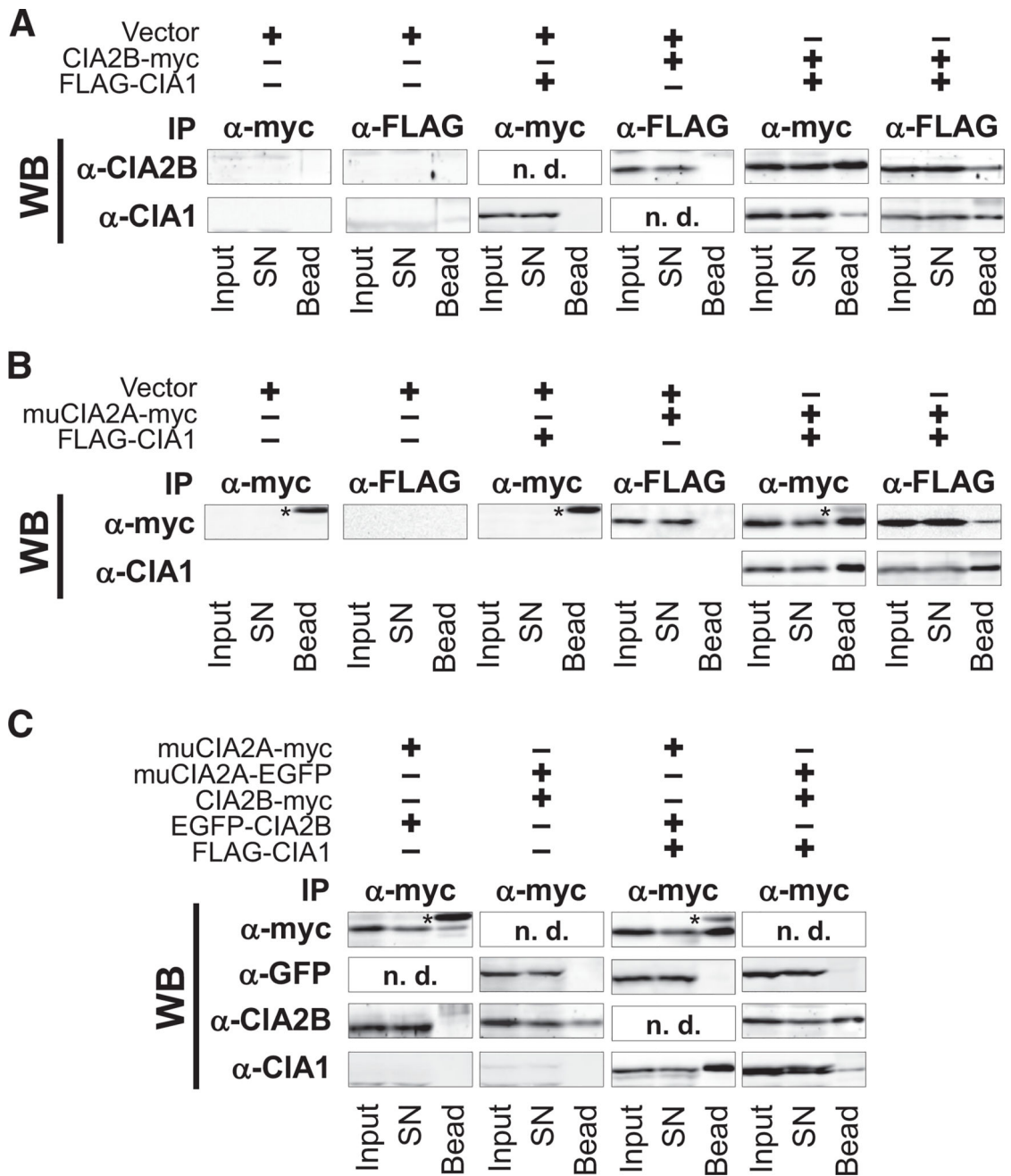
Oliver Stehling, Judita Mascarenhas, Ajay A. Vashisht, Alex D. Sheftel, Brigitte Niggemeyer, Ralf Rösser, Antonio J. Pierik, James A. Wohlschlegel, and Roland Lill\*

\*Correspondence: lill@staff.uni-marburg.de

<https://doi.org/10.1016/j.cmet.2017.12.009>

(*Cell Metabolism* 18, 187–198; August 6, 2013)

We have recently noted a number of mistakes in Figures 5A and 5C of our 2013 paper. The anti-CIA1-myc immunostaining (fifth panel in Figure 5A) was duplicated in Figure 5C (bottom right) during the preparation of the paper. We are now replacing this panel with the correct blot from the same experiment. In reviewing all the data in the paper, we noticed a number of additional errors in Figure 5 pertaining to lane cropping and accurate labelling, which we are correcting for consistency. We are replacing an immunostain of endogenous CIA2B with a version showing the signal of CIA2B-myc (Figure 5A, anti-CIA2B, fourth panel), because our experimental design was always referring to overexpressed CIA2B-myc. We also moved an anti-EGFP-CIA2B immunoblot from the  $\alpha$ -CIA2B to the  $\alpha$ -GFP position (Figure 5C, third row). The cropped immunostain in Figure 5A (anti-CIA1, left panel; showing no specific FLAG-CIA1 signals) was shifted by one lane during preparation of the paper and is now replaced by the correct one. We also noticed that the top left blot of Figure 5C was unnecessarily corrected for input, and we have now provided the uncorrected blot. We sincerely apologize to the readers for these mistakes. These corrections, however, do not change the results and interpretations of the figure nor of the entire paper.



**Figure 5.**  
CIA2A and CIA2B Form Mutually Exclusive Complexes with CIA1 to Allow for Selective Interaction with Different Target Fe/S Proteins