

CASE REPORT

Open Access



Efficacy of T-DM1 for leptomeningeal and brain metastases in a HER2 positive metastatic breast cancer patient: new directions for systemic therapy - a case report and literature review

Giuseppina Rosaria Rita Ricciardi¹, Alessandro Russo¹, Tindara Franchina¹, Silvia Schifano¹, Giampiero Mastroeni², Anna Santacaterina³ and Vincenzo Adamo^{1*}

Abstract

Background: Herein, we report a complete response after whole brain radiotherapy (WBRT) and concomitant T-DM1 in a patient with HER2-positive metastatic breast cancer (MBC) and extensive brain and leptomeningeal involvement.

Case presentation: A 46 years old Caucasian woman with HER2-positive MBC and no baseline CNS involvement, started in August 2015 1st line therapy with Pertuzumab-Trastuzumab-Docetaxel, with partial response. However, in April 2016 the patient eventually progressed with emergence of brain and leptomeningeal metastases. Hence, she started in May 2016 2nd line therapy with T-DM1 and concomitant WBRT, with complete response (CR) after 3 courses of therapy, with complete resolution of neurological symptoms and no relevant toxicities. The CR is lasting over 13 months and the patient is out of corticosteroid use.

Conclusions: To the best of our knowledge, this is the first case reporting interesting antitumor activity of T-DM1 and concomitant WBRT in both brain and leptomeningeal metastases, with a favorable safety profile and prolonged extracranial disease control. Further prospective studies should confirm these findings.

Keywords: Trastuzumab Emtansine, T-DM1, Leptomeningeal metastases, Brain metastases, HER2-positive, Whole brain radiotherapy

Background

Human epidermal growth factor receptor 2 (HER2)-positive breast cancers (BCs) represent a distinct molecular subtype (~15–20% of all cases), defined by the overexpression of HER2 protein by immunohistochemistry (IHC) (IHC 3+) and/or amplification of HER2 gene by fluorescence in situ hybridization (FISH). Since the development of Trastuzumab, several different agents have been developed to target

HER2 in BC, profoundly changing the course of this disease [1].

Brain metastases (BMs) represent a major issue in clinical practice, being associated with significant morbidity and often a dismal prognosis. BC is the 2nd most common solid malignancy that metastasizes to the central nervous system (CNS), with the highest rates in HER2-positive patients. The incidence of BMs in HER2-positive BCs is growing as a consequence of the success of anti-HER2 targeted therapies, leading to a substantial survival gain. BMs represent a largely unmet medical need, with no targeted systemic options for brain metastases from breast cancer [2, 3].

* Correspondence: vadamo@unime.it

¹Medical Oncology Unit, A.O. Papardo & Department of Human Pathology University of Messina, Messina, Italy

Full list of author information is available at the end of the article



In addition to BMs, CNS involvement may also be associated with leptomeningeal metastases (LMs), an unusual (incidence of ~5% in BC) but unfavorable complication commonly associated with a very dismal prognosis (3.5–3.8 months) [4, 5]. The incidence of LMs is growing, but effective and specific therapeutic strategies are lacking.

Trastuzumab emtansine (T-DM1) is an antibody-drug conjugate, incorporating the HER2-targeted antitumor properties of Trastuzumab with the cytotoxic activity of the microtubule-inhibitory agent DM1, which demonstrated a significant improvement in overall survival in Trastuzumab-pretreated metastatic breast cancer (MBC) patients compared to Lapatinib-Capecitabine [6] and treatment physician's choice [7], respectively.

The retrospective analysis of the phase III trial EMLIA [8] and a few case report and case series [9–14] suggested a possible activity in patients with BMs. Scant data are available for the activity of anti-HER2 agents in patients with LMs, commonly excluded from most of randomized clinical trials.

Herein, we report a complete response after WBRT and concomitant T-DM1 in a patient with HER2-positive MBC and extensive brain and leptomeningeal involvement.

Case presentation

In August 2015, a 46-year-old Caucasian woman referred to our Institution for a metastatic breast cancer. Three years before she had undergone a left quadrantectomy and ipsilateral axillary nodal dissection for a pT1c pN3 M0 infiltrating ductal carcinoma, grade 3, with Estrogen Receptor negative, Progesterone Receptor negative, MIB-1 60%, HER2 immunohistochemistry 3+. Then, she underwent adjuvant chemotherapy with doxorubicin and cyclophosphamide for four cycles followed by four courses of Docetaxel plus Trastuzumab and then Trastuzumab only for one year at standard doses. Thereafter, she started regular follow-up, negative for locoregional and distant recurrence, until July 2015, when an abdomen ultrasound showed multiple hypoechoic nodules in the liver (the largest with a maximum diameter of 22.3 × 20.7 mm), consistent with metastatic lesions. A positron emission tomography (PET) and a contrast-enhanced total body computed tomography (CT) scan confirmed the presence of multiple secondary lesions in the liver and multiple bilateral pulmonary and hilar lymph node metastases. According to the disease stage, biomolecular tumor characteristics, and clinical conditions (ECOG PS 0), in August 2015 she started 1st line therapy with Pertuzumab plus Trastuzumab and Docetaxel every 3 weeks at standard doses. The CT scan after 3 courses of treatment showed a partial response with an almost complete disappearance and cystic transformation of both hepatic and pulmonary neoplastic lesions. Based

on the tumor response, treatment was continued with the same regimen up to 6 cycles. In December 2015 the PET and CT restaging showed a radiological complete response (Fig. 1).

Hence, she reassumed the same regimen up to 8 courses and then she continued with only dual HER2-blockage for further 4 cycles. However, in April 2016 she started suffering from haze and headache. Brain CT and Magnetic Resonance Imaging (MRI) scans [Fig. 2] revealed the emergence of brain metastatic lesions and leptomeningeal metastases.

Then, in May 2016 she started 2nd line therapy with T-DM1 at 3.6 mg/kg every 3 weeks with concurrent Whole Brain Radiotherapy (WBRT) at total doses of 30 Gy in 10 fractions (Fig. 3).

A brain MRI after 3 courses of T-DM1 (Fig. 4) showed a complete response with a total disappearance of all CNS metastatic lesions and complete resolution of neurological symptoms.

In April 2017, the brain MRI and thoracic-abdomen CT restaging (Fig. 5) after 14 cycles of T-DM1 confirmed the CNS complete response, with control of extracranial disease. To date, the patient has completed 17 courses of T-DM1 treatment (CNS PFS >

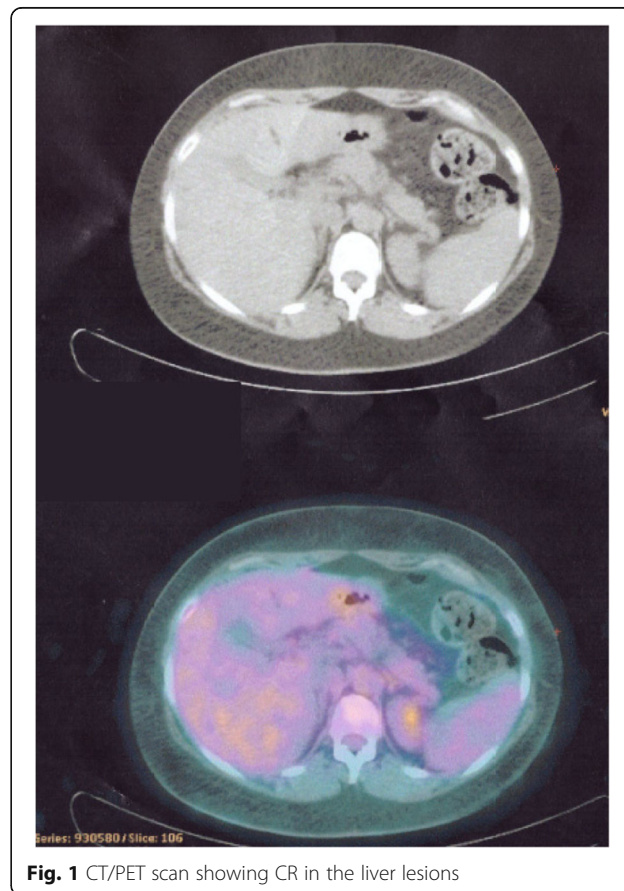


Fig. 1 CT/PET scan showing CR in the liver lesions

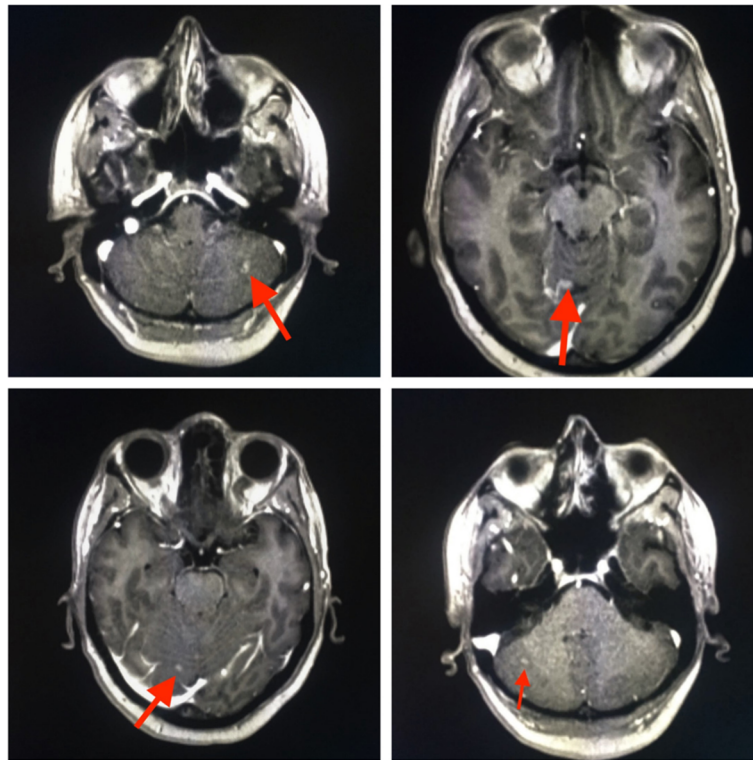


Fig. 2 April 2016, Brain MRI showing multiple brain and leptomeningeal metastases

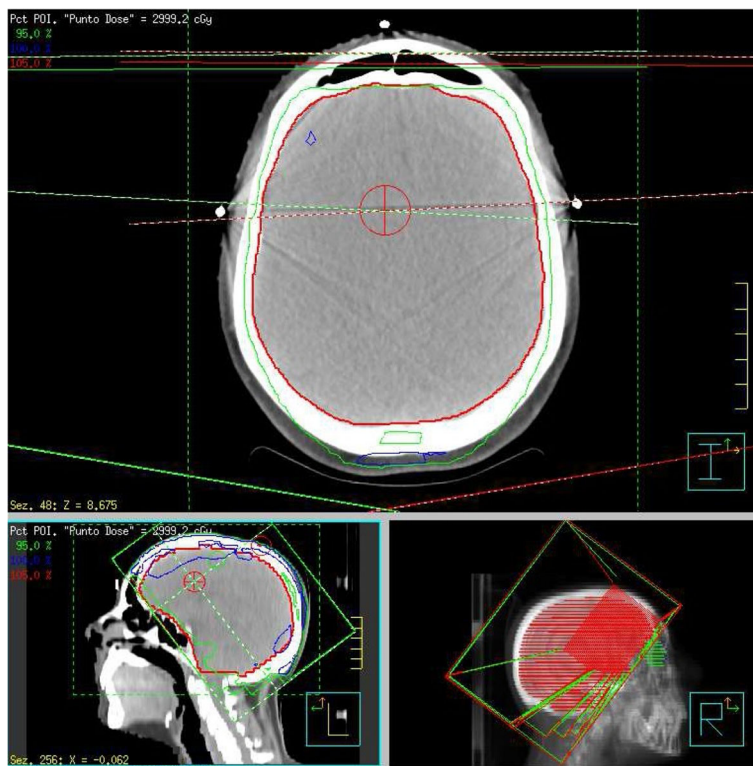


Fig. 3 Treatment planning and delivery of Whole Brain Radiotherapy (WBRT)

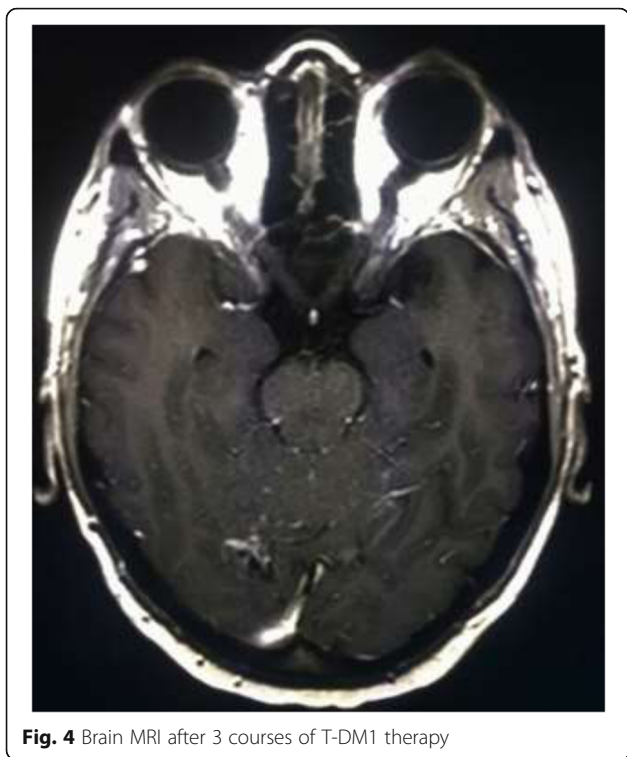


Fig. 4 Brain MRI after 3 courses of T-DM1 therapy

13 months), with no safety and neurological concerns without need of corticosteroid use (Fig. 6).

Discussion and conclusions

Brain metastases (BMs) are a major cause of morbidity and mortality for patients with MBC and their incidence is growing. BC subtypes exhibit different propensity to metastasize to the CNS, with higher incidence of BMs in

triple negative and HER2-positive breast cancers. Indeed, it is estimated that ~30–55% of patients with HER2-positive BCs will develop BMs during the course of their disease. Historically, the cornerstone for treatment of BMs was represented by loco-regional therapies, including whole brain radiotherapy (WBRT), stereotactic radiosurgery (SRS), and surgery. Given their limited blood-brain barrier (BBB) penetration and the exclusion of patients with BMs from the majority of randomized clinical trials, the role of systemic therapies in this setting is still unclear [15–17]. However, the development of targeted therapies has profoundly changed the natural history of molecularly selected cancer populations, including HER2-positive BCs, generating considerable interest in the activity of these agents against BMs [18].

CNS response rates with conventional chemotherapy ranges from 0% to 55% [16]. Monoclonal antibodies, such as Trastuzumab and Pertuzumab, have been traditionally thought not to cross the BBB, due to their relatively high molecular weights and the unlikely activation of ADCC process in the immuno-privileged brain microenvironment [9, 18]. However, preclinical evidences suggest that the integrity of BBB can be compromised in the presence of brain metastases and become increasingly permeable, due to loss of vascular pericyte coverage, dysregulation of tight junctions proteins, and increased VEGF secretion with subsequent increased synthesis of eNOS (endothelial Nitric Oxide Synthase) [19, 20]. Moreover, this increased permeability is not always homogeneous, with a small subset of BMs (~10%) having sufficient permeability to show a response to common cytotoxic agents [21]. Moreover, radiotherapy may further increase the BBB permeability [22].

Some preclinical data suggest that Trastuzumab may contribute to intracranial disease control, since it can cross

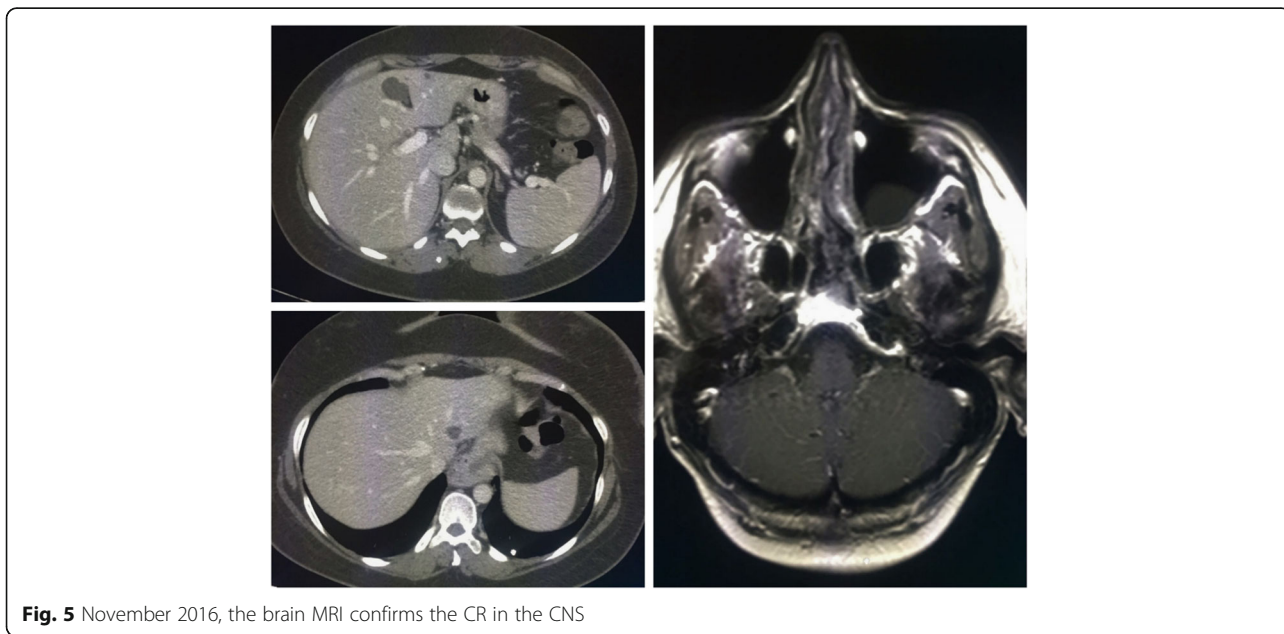


Fig. 5 November 2016, the brain MRI confirms the CR in the CNS

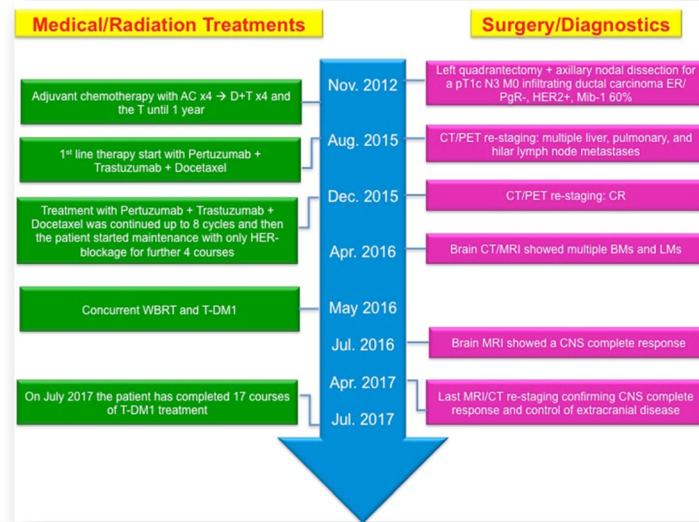


Fig. 6 Timeline of interventions and outcomes

an impaired BBB, especially in the presence of leptomeningeal involvement and prior radiation therapy [23, 24].

We previously reported a remarkable CNS activity with the nab-paclitaxel/Trastuzumab combination in a heavily pretreated HER2-positive BC patient with BMs [25].

Trastuzumab-containing regimens failed to prevent CNS failure [26], although retrospective studies have reported an improvement in OS for patients with BMs treated with Trastuzumab [27]. Therefore, it remains unclear whether the increased OS observed in these patients is attributable to a better extra-cranial disease control or to an intracranial activity of Trastuzumab [18, 28, 29]. Trastuzumab can be safely administered during WBRT without increases in neurological toxicity [30].

Given its low molecular weight, Lapatinib, a dual EGFR/HER2 tyrosine kinase inhibitor, has been evaluated in BMs from BC. However, single agent Lapatinib reported only modest activity in HER2-positive BC patients with BMs progressing after WBRT (2.6–6% intracranial ORR) [31, 32], albeit the addition of Capecitabine may increase the CNS response rate up to 18–66% [33–37]. However, the use of Lapatinib-Capecitabine was not associated with lower incidence of CNS metastases compared with Trastuzumab-Capecitabine in the phase III trial CEREBEL [38].

Recently, the Pertuzumab-Trastuzumab-Docetaxel combination has been reported, in a subgroup analysis of the CLEOPATRA trial, to prolong the time to BMs emergence in HER2-positive BCs compared with Trastuzumab-Docetaxel-Placebo with a median time to development of CNS metastases as first site of disease progression of 11.9 months in the placebo arm vs. 15.0 months in the

Pertuzumab arm (HR = 0.58, 95% CI 0.39–0.85, $P = 0.0049$), albeit the incidence of CNS metastases as first site of disease progression was similar in the two subgroups (12.6% in the placebo arm vs. 13.7% in the Pertuzumab arm) [39]. However, in the present case, the patient early recurred in the CNS with a BMs-free survival of only 9 months.

Recent preclinical work demonstrated that T-DM1 is active in murine models of BMs from HER2-positive BC, with a delayed growth of BMs, a longer survival benefit and a significant superior ADCC response in the brain microenvironment compared with Trastuzumab, due to the cytotoxic agent DM1 [40].

In a subgroup analysis of the EMILIA trial, T-DM1 was associated with a protective efficacy against BMs similar to that of Lapatinib-Capecitabine [8], two agents with known CNS penetration [41], with a similar incidence of CNS progression between the two subgroups, but with a longer OS with T-DM1 in both patients without BMs at baseline and those with treated, asymptomatic BMs [8].

A few case reports [9–11] and small case series [12–14] have suggested an intriguing intracranial activity of T-DM1 in patients with asymptomatic BMs with a 44–100% intracranial ORR [12, 14]. Moreover, de Vries et al. recently reported CNS activity also against symptomatic BMs [42].

No unexpected toxicities have emerged from these studies. However, given the relative limited number of patients evaluated in these studies no definitive conclusions can be drawn. Indeed, recently some authors pointed out the possible increase of neurological toxicities in patients with BMs treated with T-DM1 after SRS either as delayed [43]

or rapid development of radiation necrosis [44]. Moreover, other authors have reported the concomitant use of radiotherapy and T-DM1 for the treatment of BMs [45, 46], but none of the patients included in those studies had leptomeningeal dissemination. The concomitant use of SRS and T-DM1 seems to increase the risk of radiation necrosis (50% in a small case series), a known complication of SRS, commonly observed in up to 34% of patients at 24 months and associated with a significant morbidity in 10–17% of patients [46].

The mechanisms of this interaction are largely unknown, albeit they may be related to an increased activity of T-DM1 after radiotherapy, since radiation is associated with HER2 upregulation in human breast cancer cell lines. Furthermore, T-DM1 may target injured glial cells, which are associated with upregulation of HER2 [44]. The synergistic activity of T-DM1 and radiotherapy combination is confirmed in the present case with a long, remarkable complete response in both parenchymal and leptomeningeal CNS metastases.

The safety profile of T-DM1 in association with radiotherapy (WBRT and SRS) either as sequential or concomitant therapy should be further evaluated in prospective studies. A Phase I study is evaluating different sequences of combined T-DM1 and WBRT (NCT02135159) and a phase II is being developed by the Translational Breast Cancer Research Consortium (TBCRC) to evaluate the activity of T-DM1 in BMs from HER2-positive BC [47]. The present case might suggest a good safety profile for combining WBRT and concomitant T-DM1, albeit further studies are needed to confirm these results.

Leptomeningeal metastases (LMs) represent an increasingly observed clinical scenario in HER2-positive BC due to the prolonged overall survival seen in these patients because of improvements in local and systemic therapies as well as supportive care. The incidence of LMs in breast cancer patients is ~5% and, despite major therapeutic breakthroughs in the last decade, it is still associated with a poorer prognosis (usually 2–4 months) than BMs [4, 48]. Treatment of LMs is a largely unmet medical need, commonly treated with local therapies, including radiotherapy and intrathecal/intraventricular therapy. No systemic agent has been proved effective in this setting, given the relative rarity of this clinical scenario and the exclusion of these patients from randomized clinical trials.

A recent large retrospective analysis of 318 patients with LMs from breast cancer, reported that survival, as for patients with BMs, is influenced by tumor subtype, since triple negative breast cancers (TNBCs) are associated with the worst OS, compared with HR+HER2- and with HR +/-HER2+. Interestingly, median OS of HER2-positive BCs with LMs improved in the last decade with the introduction of more effective therapeutic agents, such as Lapatinib, since the median survival was 3.3 months before 2005 and

7.0 months thereafter, suggesting that the use of systemic therapies with CNS activity may improve the outcome of these patients [4]. The role of T-DM1 is largely unknown in this subset.

To the best of our knowledge, this is the first case of a HER2-positive BC patient with LMs responding to T-DM1, with a long disease control in the CNS (intracranial PFS > 13 months), exceeding by far the short median OS commonly observed in these patients. The remarkable activity seen in the present case further supports the effect of T-DM1 in patients with CNS involvement, even in the presence of very difficult clinical scenarios, such as LMs. The impairment of the BBB caused by the presence of parenchymal and leptomeningeal metastases and prior radiotherapy may have favored the CNS penetration of this antibody-drug conjugate, enabling its antitumor activity even in a sanctuary site.

To the best of our knowledge, this is the first case reporting interesting antitumor activity of T-DM1 and concomitant WBRT in both brain and leptomeningeal metastases, with a favorable safety profile and prolonged extracranial disease control. Further prospective studies should confirm these findings.

The therapeutic landscape of HER2-positive BC patients with CNS involvement is rapidly evolving and we think that T-DM1 may play a key role in this scenario. The results of ongoing clinical trials with CNS-penetrant molecules, such as ONT-380 [49], are eagerly awaited and may add novel effective therapies in the therapeutic armamentarium of HER2-positive BCs metastasized to the CNS.

Abbreviations

ADCC: Antibody-dependent cell-mediated cytotoxicity; BBB: Blood Brain Barrier; BC: Breast Cancer; BM: Brain Metastasis; CNS: Central Nervous System; CT: Computed Tomography; EGFR: Epidermal growth factor receptor; eNOS: Endothelial nitric oxide synthase; FISH: Fluorescent in situ hybridization; HER2: Human epidermal growth factor receptor 2; HR: Hormone Receptor; IHC: Immunohistochemistry; LM: Leptomeningeal Metastasis; MBC: Metastatic Breast Cancer; MRI: Magnetic Resonance Imaging; ORR: Overall Response Rate; PET: Positron Emission Tomography; PFS: Progression free survival; SRS: Stereotactic radiosurgery; T-DM1: Trastuzumab Emtansine; TNBC: Triple-negative breast cancer; WBRT: Whole Brain Radiation Therapy

Acknowledgements

Not applicable.

Funding

This work was supported by the Consorzio Interuniversitario Nazionale per la Bio-Oncologia (CINBO), A.S.S.O. (Associazione Siciliana Sostegno Oncologico) Onlus and Borsa Dottorati FSE XXXII Ciclo Unime. These funding sources had no role in the design of the study and collection, analysis, and interpretation of data and in writing the manuscript.

Availability of data and materials

All data generated or analysed during this study are included in this published article.

Authors' contributions

GRRR was involved in the patient active management, design of the study and drafting the manuscript. AR participated in drafting and

revision of the manuscript. TF participated to draft and edit the manuscript. SS was involved in the patient active management, collected the clinical data, and edited the manuscript. GM assessed response by reviewing patient imaging studies and collected the clinical data. AS was involved in the patient active management and clinical data collection. VA participated in the management of patient treatment, study design, critical review and supervision of the manuscript. All the authors read and approved the final paper.

Ethics approval and consent to participate

Not applicable.

Consent for publication

Written informed consent was obtained from the patient for publication of this case report and accompanying images. A copy of the written consent is available for review by the Editor-in-Chief of this journal.

Competing interests

The authors declare that they have no competing interests.

Publisher's Note

Springer Nature remains neutral with regard to jurisdictional claims in published maps and institutional affiliations.

Author details

¹Medical Oncology Unit, A.O. Papardo & Department of Human Pathology University of Messina, Messina, Italy. ²Radiodiagnostic Unit, A.O. Papardo, Messina, Italy. ³Radiation Oncology Unit, A.O. Papardo, Messina, Italy.

Received: 23 August 2017 Accepted: 16 January 2018

Published online: 25 January 2018

References

- Loibl S, Gianni L. HER2-positive breast cancer. *Lancet*. 2017;389(10087):2415–2429.
- Mehta AI, Brufsky AM, Sampson JH. Therapeutic approaches for HER2-positive brain metastases: circumventing the blood-brain barrier. *Cancer Treat Rev*. 2013;39(3):261–9.
- Lin NU, Amiri-Kordestani L, Palmieri D, Liewehr DJ, Steeg PS. CNS metastases in breast cancer: old challenge, new frontiers. *Clin Cancer Res*. 2013;19(23):6404–18.
- Morikawa A, Jordan L, Rozner R, Patil S, Boire A, Pentsova E, et al. Characteristics and outcomes of patients with breast cancer with Leptomeningeal metastasis. *Clin Breast Cancer*. 2017;17(1):23–8.
- Le Rhun E, Taillibert S, Zairi F, Kotecki N, Devos P, Mailliez A, et al. A retrospective case series of 103 consecutive patients with leptomeningeal metastasis and breast cancer. *J Neuro-Oncol*. 2013;113(1):83–92.
- Diéras V, Miles D, Verma S, Pegram M, Welslau M, Baselga J, et al. Trastuzumab emtansine versus capecitabine plus lapatinib in patients with previously treated HER2-positive advanced breast cancer (EMILIA): a descriptive analysis of final overall survival results from a randomised, open-label, phase 3 trial. *Lancet Oncol*. 2017;18(6):732–42.
- Krop IE, Kim SB, Martin AG, LoRusso PM, Ferrero JM, Badovinac-Crnjevic T, et al. Trastuzumab emtansine versus treatment of physician's choice in patients with previously treated HER2-positive metastatic breast cancer (TH3RESA): final overall survival results from a randomised open-label phase 3 trial. *Lancet Oncol*. 2017;18(6):743–54.
- Krop IE, Lin NU, Blackwell K, Guardino E, Huober J, Lu M, et al. Trastuzumab emtansine (T-DM1) versus lapatinib plus capecitabine in patients with HER2-positive metastatic breast cancer and central nervous system metastases: a retrospective, exploratory analysis in EMILIA. *Ann Oncol*. 2015;26(1):113–9.
- Bartsch R, Berghoff AS, Preusser M. Breast cancer brain metastases responding to primary systemic therapy with T-DM1. *J Neuro-Oncol*. 2014;116(1):205–6.
- Torres S, Maralani P, Verma S. Activity of T-DM1 in HER-2 positive central nervous system breast cancer metastases. *BMJ Case Rep*. 2014;2014.
- Kalsi R, Feigenberg S, Kwok Y, Tkaczuk K, Mehta M, Chumsri S. Brain metastasis and response to ado-trastuzumab emtansine: a case report and literature review. *Clin Breast Cancer*. 2015;15(2):e163–6.
- Keith KC, Lee Y, Ewend MG, Zagar TM, Anders CK. Activity of Trastuzumab Emtansine (TDM1) in HER2-positive breast cancer brain metastases: a case series. *Cancer Treat Commun*. 2016;7:43–6.
- Bartsch R, Berghoff AS, Vogl U, Rudas M, Bergen E, Dubsy P, et al. Activity of T-DM1 in Her2-positive breast cancer brain metastases. *Clin Exp Metastasis*. 2015;32(7):729–37.
- Jacot W, Pons E, Frenel JS, Guiu S, Levy C, Heudel PE, et al. Efficacy and safety of trastuzumabemtansine (T-DM1) in patients with HER2-positive breast cancer with brain metastases. *Breast Cancer Res Treat*. 2016;157(2):307–18.
- Venur VA, Ahluwalia MS. Targeted therapy in brain metastases: ready for primetime? *Am Soc Clin Oncol Educ Book*. 2016;35:e123–30.
- Fontanella C, De Carlo E, Cinausero M, Pelizzari G, Venuti I, Puglisi F. Central nervous system involvement in breast cancer patients: is the therapeutic landscape changing too slowly? *Cancer Treat Rev*. 2016;46:80–8.
- Phillips C, Jeffree R, Khasraw M. Management of breast cancer brain metastases: a practical review. *Breast*. 2017;31:90–8.
- Chamberlain MC, Baik CS, Gadi VK, Bhatia S, Chow LQ. Systemic therapy of brain metastases: non-small cell lung cancer, breast cancer, and melanoma. *Neuro-Oncology*. 2017;19(1):i1–i24.
- Murrell DH, Foster PJ, Chambers AF. Brain metastases from breast cancer: lessons from experimental magnetic resonance imaging studies and clinical implications. *J Mol Med (Berl)*. 2014;92(1):5–12.
- Adkins CE, Mohammad AS, Terrell-Hall TB, Dolan EL, Shah N, Sechrest E, et al. Characterization of passive permeability at the blood-tumor barrier in five preclinical models of brain metastases of breast cancer. *Clin Exp Metastasis*. 2016;33(4):373–83.
- Lockman PR, Mittapalli RK, Taskar KS, Rudraraju V, Gril B, Bohn KA, et al. Heterogeneous blood-tumor barrier permeability determines drug efficacy in experimental brain metastases of breast cancer. *Clin Cancer Res*. 2010;16(23):5664–78.
- vanVulpen M, Kal HB, Taphoorn MJ, El-Sharouni SY. Changes in blood-brain barrier permeability induced by radiotherapy: implications for timing of chemotherapy? (review). *Oncol Rep*. 2002;9(4):683–8.
- Stemmler HJ, Schmitt M, Willems A, Bernhard H, Harbeck N, Heinemann V. Ratio of trastuzumab levels in serum and cerebrospinal fluid is altered in HER2-positive breast cancer patients with brain metastases and impairment of blood-brain barrier. *Anti-Cancer Drugs*. 2007;18(1):23–8.
- Dijkers EC, Oude Munnink TH, Kosterink JG, Brouwers AH, Jager PL, de Jong JR, et al. Biodistribution of 89Zr-trastuzumab and PET imaging of HER2-positive lesions in patients with metastatic breast cancer. *Clin Pharmacol Ther*. 2010;87(5):586–92.
- Ricciardi GR, Russo A, Franchina T, Ferraro G, Adamo V. Efficacy of nab-paclitaxel plus trastuzumab in a long-surviving heavily pretreated HER2-positive breast cancer patient with brain metastases. *Onco Targets Ther*. 2015;8:289–94.
- Olson EM, Abdel-Rasoul M, Maly J, Wu CS, Lin NU, Shapiro CL. Incidence and risk of central nervous system metastases as site of first recurrence in patients with HER2-positive breast cancer treated with adjuvant trastuzumab. *Ann Oncol*. 2013;24(6):1526–33.
- Bartsch R, Rottenfusser A, Wenzel C, Dieckmann K, Pluschnig U, Altörjay G, et al. Trastuzumab prolongs overall survival in patients with brain metastases from Her2 positive breast cancer. *J Neuro-Oncol*. 2007;85(3):311–7.
- Rostami R, Mittal S, Rostami P, Tavassoli F, Jabbari B. Brain metastasis in breast cancer: a comprehensive literature review. *J Neuro-Oncol*. 2016;127(3):407–14.
- Shen Q, Sahin AA, Hess KR, Suki D, Aldape KD, Sawaya R, et al. Breast cancer with brain metastases: clinicopathologic features, survival, and paired biomarker analysis. *Oncologist*. 2015;20(5):466–73.
- Chargari C, Idrissi HR, Pierga JY, Bollet MA, Diéras V, Campana F, et al. Preliminary results of whole brain radiotherapy with concurrent trastuzumab for treatment of brain metastases in breast cancer patients. *Int J Radiat Oncol Biol Phys*. 2011;81(3):631–6.
- Lin NU, Carey LA, Liu MC, Younger J, Come SE, Ewend M, et al. Phase II trial of lapatinib for brain metastases in patients with human epidermal growth factor receptor 2-positive breast cancer. *J Clin Oncol*. 2008;26(12):1993–9.
- Lin NU, Diéras V, Paul D, Lossignol D, Christodoulou C, Stemmler HJ, et al. Multicenter phase II study of lapatinib in patients with brain metastases from HER2-positive breast cancer. *Clin Cancer Res*. 2009;15(4):1452–9.
- Boccardo F, Kaufman B, Baselga J, Dieras V, Link J, Casey MA, et al. Evaluation of lapatinib plus capecitabine in patients with brain metastases

- from HER2+ breast cancer enrolled in the Lapatinib expanded access program (LEAP) and French Authorisation Temporaire d'Utilisation (ATU). *J Clin Oncol.* 2008;26(15S Supplement):1094.
34. Metro G, Foglietta J, Russillo M, Stocchi L, Vidiri A, Giannarelli D, et al. Clinical outcome of patients with brain metastases from HER2-positive breast cancer treated with lapatinib and capecitabine. *Ann Oncol.* 2011; 22(3):625–30.
 35. Sutherland S, Ashley S, Miles D, Chan S, Wardley A, Davidson N, et al. Treatment of HER2-positive metastatic breast cancer with lapatinib and capecitabine in the lapatinib expanded access programme, including efficacy in brain metastases—the UK experience. *Br J Cancer.* 2010;102(6): 995–1002.
 36. Bachelot T, Romieu G, Campone M, Diéras V, Cropet C, Dalenc F, et al. Lapatinib plus capecitabine in patients with previously untreated brain metastases from HER2-positive metastatic breast cancer (LANDSCAPE): a single-group phase 2 study. *Lancet Oncol.* 2013;14(1):64–71.
 37. Lin NU, Eierman W, Greil R, Campone M, Kaufman B, Steplewski K, et al. Randomized phase II study of lapatinib plus capecitabine or lapatinib plus topotecan for patients with HER2-positive breast cancer brain metastases. *J Neuro-Oncol.* 2011;105(3):613–20.
 38. Pivot X, Manikhas A, Żurawski B, Chmielowska E, Karaszewska B, Allerton R, et al. CEREBEL (EGF111438): a phase III, randomized, open-label study of Lapatinib plus Capecitabine versus Trastuzumab plus Capecitabine in patients with human epidermal growth factor receptor 2-positive metastatic breast cancer. *J Clin Oncol.* 2015;33(14):1564–73.
 39. Swain SM, Baselga J, Miles D, Im YH, Quah C, Lee LF, et al. Incidence of central nervous system metastases in patients with HER2-positive metastatic breast cancer treated with pertuzumab, trastuzumab, and docetaxel: results from the randomized phase III study CLEOPATRA. *Ann Oncol.* 2014;25(6):1116–21.
 40. Askoxylakis V, Ferraro GB, Kodack DP, Badeaux M, Shankaraiah RC, Seano G, et al. Preclinical Efficacy of Ado-trastuzumab Emtansine in the Brain Microenvironment. *J Natl Cancer Inst.* 2015;108(2). doi: <https://doi.org/10.1093/jnci/djv313>. Print 2016 Feb.
 41. Morikawa A, Peereboom DM, Thorsheim HR, Samala R, Balyan R, Murphy CG, et al. Capecitabine and lapatinib uptake in surgically resected brain metastases from metastatic breast cancer patients: a prospective study. *Neuro-Oncology.* 2015;17(2):289–95.
 42. de Vries CL, Linn SC, Brandsma D. Response of symptomatic brain metastases from HER-2 overexpressing breast cancer with T-DM1. *J Neuro-Oncol.* 2016;127(2):401–3.
 43. Mitsuya K, Watanabe J, Nakasu Y, Hayashi N, Harada H, Ito I. Expansive hematoma in delayed cerebral radiation necrosis in patients treated with T-DM1: a report of two cases. *BMC Cancer.* 2016;16:391.
 44. Carlson JA, Nooruddin Z, Rusthoven C, Elias A, Borges VF, Diamond JR, et al. Trastuzumab emtansine and stereotactic radiosurgery: an unexpected increase in clinically significant brain edema. *Neuro-Oncology.* 2014;16(7):1006–9.
 45. Borges GS, Rovere RK, Dias SM, Chong FH, Morais MS. Safety and efficacy of the combination of T-DM1 with radiotherapy of the central nervous system in a patient with HER2-positive metastatic breast cancer: case study and review of the literature. *E Cancer Med Sci.* 2015;9:586.
 46. Geraud A, Xu HP, Beuzeboc P, Kirova YM. Preliminary experience of the concurrent use of radiosurgery and T-DM1 for brain metastases in HER2-positive metastatic breast cancer. *J Neuro-Oncol.* 2017;131(1):69–72.
 47. Zagar TM, Van Swearingen AE, Kaidar-Person O, Ewend MG, Anders CK. Multidisciplinary Management of Breast Cancer Brain Metastases. *Oncology (Williston Park).* 2016;30(10):923-33.
 48. Brower JV, Saha S, Rosenberg SA, Hullett CR, Ian RH. Management of leptomeningeal metastases: prognostic factors and associated outcomes. *J Clin Neurosci.* 2016;27:130–7.
 49. Borges VF, Ferrario C, Aucoin N, Falkson CI, Khan QJ, Krop IE, et al. Efficacy results of a phase 1b study of ont-380, a CNS-penetrant TKI, in combination with T-DM1 in HER2+ metastatic breast cancer (MBC), including patients (pts) with brain metastases. *J Clin Oncol* 34, 2016 (suppl; abstr 513).

Submit your next manuscript to BioMed Central and we will help you at every step:

- We accept pre-submission inquiries
- Our selector tool helps you to find the most relevant journal
- We provide round the clock customer support
- Convenient online submission
- Thorough peer review
- Inclusion in PubMed and all major indexing services
- Maximum visibility for your research

Submit your manuscript at
www.biomedcentral.com/submit

