

BRIEF REPORT



Beta blocker use correlates with better overall survival in metastatic melanoma patients and improves the efficacy of immunotherapies in mice

Kathleen M. Kokolus¹, Ying Zhang², Jeffrey M. Sivik³, Carla Schmeck⁴, Junjia Zhu², Elizabeth A. Repasky⁵, Joseph J. Drabick⁴, and Todd D. Schell¹

¹Department of Microbiology and Immunology, Penn State College of Medicine, Hershey, PA, USA; ²Department of Public Health Sciences, Penn State College of Medicine, Hershey, PA, USA; ³Penn State Health Milton S. Hershey Medical Center, Hershey, PA, USA; ⁴Division of Hematology and Oncology, Department of Medicine, Penn State Milton S. Hershey Medical Center, Hershey, PA, USA; ⁵Department of Immunology, Roswell Park Cancer Institute, Buffalo, NY, USA

ABSTRACT

Immunotherapy has expanded treatment options for cancers with historically poor outcomes, yet a significant proportion of patients still fail to achieve durable clinical benefit. We defined the contribution of β -adrenergic receptor (β AR) signaling, a component of the stress response, on success of immunotherapy for melanoma since the use of antagonists (β -blockers) is associated with improved clinical outcomes in some cancers. We show that metastatic melanoma patients who received immunotherapy had improved overall survival if they also received pan β -blockers. This retrospective analysis is reinforced by results showing that β AR blockade enhances the control of murine melanoma growth by anti- α PD-1 checkpoint blockade. However, this effect was most significant when β -blocker was combined with dual α PD-1 + high dose interleukin-2 therapy and was reproduced by selective blockade of β_2 ARs. These results identify a novel strategy that can be quickly introduced to potentially increase the number of patients who benefit from immune-based therapies.

ARTICLE HISTORY

Received 10 October 2017
Revised 8 November 2017
Accepted 9 November 2017

KEYWORDS

Beta-adrenergic receptor;
Beta-blockers;
Immunotherapy; Metastatic
melanoma patients; Mice

Introduction

Metastatic melanoma remains a significant clinical problem, with five-year survival rates of only 15–20%.¹ Until recently, high dose interleukin-2 (IL-2) was the only FDA-approved immune based therapy available for the treatment of metastatic melanoma. However, overall response rates for metastatic melanoma patients treated with IL-2 are reported at less than 20%.² Although complete responses from IL-2 therapy are rare, they are typically durable when achieved.^{3,4} These dismal survival rates are likely to improve over time following recent FDA approvals of checkpoint inhibitor therapies including antibodies that block cytotoxic T-lymphocyte-associated protein 4 (CTLA-4)⁵ or the programmed cell death protein 1 (PD-1)^{6,7} pathways. Although promising, the clinical response rate to these therapies remains low at less than 35% with a large percentage of patients experiencing no benefit or only a transient response to these treatment modalities.^{8,9} These observations highlight the need for novel therapeutic strategies which take advantage of the beneficial aspects of immunotherapy while improving clinical outcome by increasing the durable response rates.

The influence of β -adrenergic receptor (β AR) driven stress on the immune response has been long recognized and the role of stress in suppressing the anti-tumor immune response is well documented.^{10,11} However, the precise mechanism by which stress hinders anti-tumor immunity is still poorly

understood. Recent pre-clinical studies have shown that under conditions of reduced physiological stress, the T cell dependent anti-tumor immune response is greatly enhanced^{12,13} and the efficacy of standard cancer therapies is improved.^{14,15} In contrast, stress driven β AR signaling is immunosuppressive, leading to increased numbers of immune suppressive cells,¹² reduced expression of T cell growth-promoting cytokines¹⁶ and impeded T cell cytotoxicity.¹² These findings suggest that targeting the β AR signaling pathway directly to reduce stress signaling may provide an innovative approach to improve cancer treatment.

β AR signaling can be inhibited pharmacologically by treatment with antagonists. Commonly known as β -blockers, β AR antagonists are recommended for all patients at risk of heart failure independent of age and sex.^{17,18} Clinically, β -blockers are widely used in multiple disease conditions including hypertension, acute myocardial infarction, congestive heart failure, essential tremor, migraines, glaucoma and anxiety disorders.^{17,19} The most commonly prescribed antagonists are pan β -blockers and β_1 -selective blockers which target both β_1 ARs and β_2 ARs or only β_1 ARs, respectively. Several studies demonstrate a positive correlation between β -blocker usage, as prescribed for non-cancer related indications, and outcome in various malignancies including breast^{20–24} and ovarian^{25,26} cancers. These pre-clinical and clinical observations suggest an

important role for β -blockers in the anti-tumor immune response.

Combination therapy is an attractive strategy to overcome the resistance associated with single agent approaches. We hypothesized that β AR blockade delivered in combination with T cell dependent immunotherapy would improve the efficacy of immunotherapeutic approaches for melanoma. In this study, we performed a retrospective analysis to determine how β -blocker usage among metastatic melanoma patients that received immunotherapy impacts overall survival (OS) and investigated the feasibility of combined β AR blockade and immunotherapy in a mouse model of melanoma.

Results

β -blocker usage correlates with improved overall survival among metastatic melanoma patients that received immunotherapy

We performed a retrospective analysis of metastatic melanoma patients treated with immune-based therapies at the Penn State Cancer Institute between 2000 and 2015. Patients (N = 195) treated with IL-2, α CTLA-4 and/or α PD-1 were included in the analysis. We found that approximately 32% (N = 62) of these patients were prescribed some class of β -blockers. Previous studies suggest that the stress response most dramatically impacts immunity through β_2 AR.^{27,28} Since β_2 -selective blockers are not clinically prescribed, patients were stratified into those that were not prescribed β -blockers, those that were prescribed β_1 -selective blockers and those that were prescribed pan β -blockers that antagonize both β_1 ARs and β_2 ARs. Age at time of immunotherapy, gender, stage at initial diagnosis and type of immunotherapy received were similar between these cohorts (Table 1 and supplementary Table S1). We found no difference in OS following the initiation of immunotherapy between patients taking β_1 -selective blockers and those taking no β -blocker (Fig. 1). In contrast, we observed a significant survival benefit for patients prescribed pan β -blockers compared to either those taking no β -blocker or β_1 -selective blockers. The types of immunotherapies were broadly distributed among

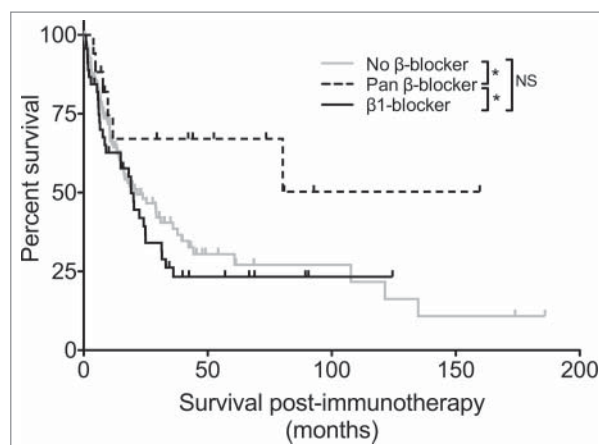


Figure 1. Malignant melanoma patients receiving pan β -blockers have prolonged survival following immunotherapy. Overall survival following the initiation of immunotherapy treatment was determined for melanoma patients treated with at least one immunotherapy (IL-2, α CTLA-4, α PD-1). Patients were stratified based on specific β_1 AR antagonist use, non-specific pan β AR antagonist use or no β -blocker use. N = 195; * = p < 0.05 determined by log rank test; NS = not significant.

the patient groups stratified by β -blocker usage (Supplementary Table S2), suggesting an advantage for patients that received pan β -blocker independent of the specific types of immunotherapy received. These results suggest that pan β -blocker usage may improve clinical outcomes for patients that receive multiple types of immunotherapy in the setting of metastatic melanoma.

β AR blockade improves the anti-tumor efficacy of immune-based therapies in a preclinical model of melanoma

We developed a parallel murine model (Fig. 2A) in order to better understand the role β AR signaling could play in the enhanced efficacy of immunotherapies suggested by our clinical study. We utilized C57BL/6J mice bearing established (palpable, ~1 week) subcutaneous wild type B16-F10-tumors lacking exogenous immunogenic T cell epitopes; a highly aggressive

Table 1. Characteristics of metastatic melanoma patients.

	All Patients N = 195	No β -blocker N = 133	β_1 -blocker N = 45	Pan β -blocker N = 17	p value
Age at start of immunotherapy treatment					
Mean (SD)	60.7 (14.7)	60.1 (14.7)	62.3 (14.4)	61.5 (16.3)	0.6294
Median (Range)	61.8 (22–92)	61.4 (22–92)	63.1 (30–89)	69.6 (23–80)	
Sex					
Male	124 (63.6%)	83 (62.4%)	31 (68.9%)	10 (58.8%)	0.6726
Female	71 (36.4%)	50 (37.6%)	14 (31.1%)	7 (41.2%)	
Stage at Initial Diagnosis*					
0	2 (1.2%)	2 (1.2%)	0 (0%)	0 (0%)	0.9830
I	31 (19.1%)	22 (20.2%)	7 (17.9%)	2 (14.3%)	
II	40 (24.7%)	27 (24.8%)	10 (25.6%)	3 (21.4%)	
III	57 (35.2%)	38 (34.9%)	13 (33.3%)	6 (42.9%)	
IV	32 (19.8%)	20 (18.3%)	9 (23.1%)	3 (21.4%)	

Descriptive characteristics of the patients in this study are summarized overall and by β -blocker usage. Where not indicated as SD or range, values represent the number of patients followed by the percentage of that column in parenthesis. The p-values were obtained using nonparametric Kruskal-Wallis tests or Fisher's exact tests with p < 0.05 considered significant.

* Note that all patients had metastatic disease at the time of immunotherapy regardless of staging at diagnosis.

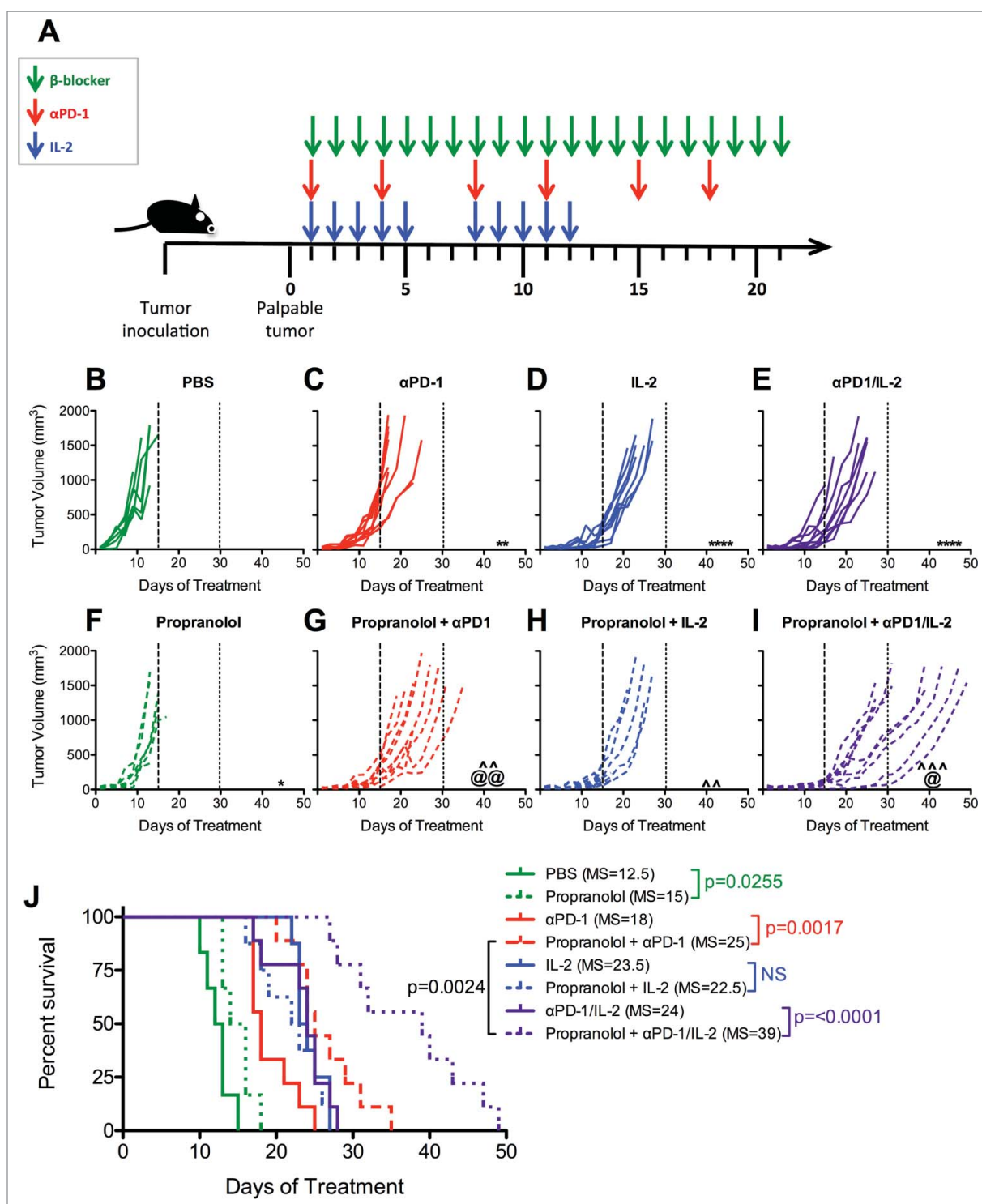


Figure 2. Propranolol improves tumor control in mice treated with immunotherapy. (A) Experimental schema. When applicable, tumor-bearing mice received 10mg/kg propranolol (pan β -blocker) daily for three weeks, 200 μ g α PD-1 twice a week for three weeks and/or 120,000 IU IL-2 twice a day for two cycles of five days on, two days off. An equivalent volume of PBS was given daily to control mice. Mice were treated with (B) PBS control, (C) α PD-1, (D) IL-2, (E) α PD-1/IL-2, (F) Propranolol, (G) Propranolol + α PD-1, (H) Propranolol + IL-2, (I) Propranolol + α PD-1/IL-2. Days 15 and 30 are indicated with long- and short-dashed lines. N = 7–8/group; p values determined by mixed linear models; pairwise comparison to untreated: ** p < 0.01, **** p < 0.0001; pairwise comparison to propranolol: ^ p < 0.01, ^p < 0.001; pairwise comparison between immunotherapy and propranolol + immunotherapy: @ p < 0.05, @@ p < 0.01. (J) Survival analysis. N = 7/group; p values determined by log rank test. Data are representative of two experiments. MS = median survival.

melanoma model.^{29,30} Tumor-bearing mice received IL-2, α PD-1, or their combination with and without a daily dose of the clinically available pan- β -blocker propranolol (Fig. 2A). Previous studies have shown only a minor or insignificant effect of α PD-1 therapy alone on the growth of B16-F10 tumors.^{31,32}

Consistent with these previous results, we observed a statistically significant but not biologically relevant delay in tumor growth following administration of α PD-1 monotherapy (Fig. 2C) compared to control-treated (PBS) mice (Fig. 2B). In contrast, IL-2 administration produced a uniform delay in

tumor growth (Fig. 2D) that was not further enhanced by combination with α PD-1 (Fig. 2E). Treatment with propranolol alone provided a minimal, although statistically significant delay in tumor growth (Fig. 2F). However, propranolol administration significantly delayed tumor growth when combined with α PD-1 (Fig. 2G) compared to either monotherapy. Propranolol with IL-2 (Fig. 2H) also produced a statistically significant delay in tumor growth compared to IL-2 alone (Fig. 2C), although the magnitude of improvement was less than observed in combination with α PD-1.

Since several patients in our study received multiple immunotherapy regimens in sequence (Supplementary Table S2), we also evaluated the impact of combined α PD-1/IL-2 therapy in this mouse model. The combination of α PD-1/IL-2 did not substantially delay tumor progression beyond that observed with IL-2 alone (Fig. 2E). However, the addition of propranolol to this regimen significantly delayed tumor progression compared to α PD-1/IL-2 alone (Fig. 2I) although no complete regressions were observed. In addition, triple combination of propranolol + α PD-1/IL-2 (Fig. 2I) delayed tumor progression more effectively than propranolol + α PD-1 (Fig. 2G), suggesting that the addition of IL-2 optimally promotes the anti-tumor response.

Survival analysis of mice within these same cohorts revealed that β -blocker alone had no survival benefit (Fig. 2J; median 15 days) and propranolol did not improve the already significant increase induced by IL-2 therapy (median 23.5 versus 22.5 days). However, propranolol significantly prolonged the survival of α PD-1 treated mice (median 25 versus 18 days; Fig. 2J). Further, survival was most dramatically extended when propranolol was administered with combined α PD-1/IL-2 (median 39 days; Fig. 2J). Taken together, our data reveal that pan β AR blockade effectively enhanced the anti-tumor properties of α PD-1-based therapy but the combination of pan β AR blockade with α PD-1/IL-2 was most effective, suggesting that pan β -blockers may function through multiple mechanisms to improve this combined therapeutic approach.

β_2 AR blockade is sufficient to enhance the efficacy of immune-based therapies

We sought to determine the influence of β_1 AR and β_2 AR on the improved immunotherapy observed in this murine melanoma model. Although β_2 AR antagonists have minimal toxicity in healthy humans,³³ there are currently no clinical indications for which these selective β -blockers are prescribed. However, these compounds have been used routinely in pre-clinical studies to dissect the roles of each β AR subset. We utilized selective β_1 AR (metoprolol) and β_2 AR (ICI 118,551) antagonists in combination with α PD-1/IL-2. Tumors in control treated mice (Fig. 3A) grew at a similar rate to those treated with either metoprolol (Fig. 3B) or ICI 118,551 (Fig. 3C). We again observed a significant delay in tumor growth when treating with α PD-1/IL-2 (Fig. 3D) compared to control treated mice (Fig. 3A). However, only β_2 AR blockade with ICI 118,551 (Fig. 3F) demonstrated improved tumor control compared with α PD-1/IL-2 alone (Fig. 3D–F). Likewise, while survival was improved by combined α PD-1/IL-2 therapy (median 14 versus 23 days), only ICI 118,551 administration further

improved survival in combination with α PD-1/IL-2 (Fig. 3G; median 35 days). Neither β AR-selective inhibitor alone improved survival of tumor-bearing mice compared to control treated mice. These data indicate that reduced signaling through β_2 AR plays an essential role in the improved tumor control observed following immunotherapy and suggest that the beneficial effect of pan β -blockers works primarily by modulating β_2 AR signaling.

Discussion

Here we make the novel observation that metastatic melanoma patients who had received immunotherapy and were taking pan β -blockers experienced prolonged OS. This clinical observation is supported by our results demonstrating that combining a non-selective pan β -blocker or selective β_2 AR antagonist with either α PD-1 or combination α PD-1/IL-2 therapy significantly slowed tumor progression and extended survival in a murine melanoma model. Further, we have demonstrated that inhibition of signaling through β_2 AR plays the prominent role in the improved anti-tumor immunity seen following immunotherapy. Our data raise the possibility that reducing stress signaling, particularly through the β_2 AR signaling pathway, can improve the efficacy of immune based therapies for melanoma and perhaps other cancers as well. These results indicate that β -blockers and immunotherapy may synergize to enhance immune cell activity and/or function to a higher degree than either approach alone.

Given the positive impact on immunotherapy observed, β AR signaling could directly augment the anti-tumor immune response as β_2 ARs are expressed on most immune cell types. Among immune cell subsets, NK cells express the highest number of receptors followed by monocytes, B cells, CD8 T cells and CD4 T cells.³⁴ Increased β AR signaling reduces proinflammatory cytokine secretion from monocytes and macrophages.^{35,36} Within the T cell compartment, CD4 T cells show decreased Th1 cytokine production³⁷ and Treg function is enhanced³⁸ following β AR stimulation; two potential mechanisms that could hinder anti-tumor immunity and immunotherapy efficacy. Additionally, β_2 AR signaling limited the IFN γ -driven CD8 T cell response to influenza infection³⁹ and β AR stimulation resulted in reduced TNF α production by macrophages and T cells that was directly linked to the inability to generate anti-tumor CD8 T cells.⁴⁰ Further, IFN γ production by and cytotoxicity of CD8+ T cells is inhibited by the β_2 AR agonist salmeterol.⁴¹ Relevant to the current study is the finding that β AR signaling can suppress T cell receptor-induced cytokine secretion and lytic activity exclusively through β_2 AR signaling.²⁸ Previous work from some in our group demonstrates that environmental conditions that activate sympathetic signaling regulate immune responses. Increased necessity to thermoregulate body temperature due to cool housing temperature reduced tumor control and hindered CD8 T cells and dendritic cells in multiple murine tumor models.^{12,13} Thus, our results are consistent with a model in which β_2 AR blockade may directly improve immune cell functions, resulting in a prolonged control of tumor progression. Although in our study most patients prescribed β -blockers were receiving selective β_1 AR agents, it is of note that a recent meta-analysis concluded

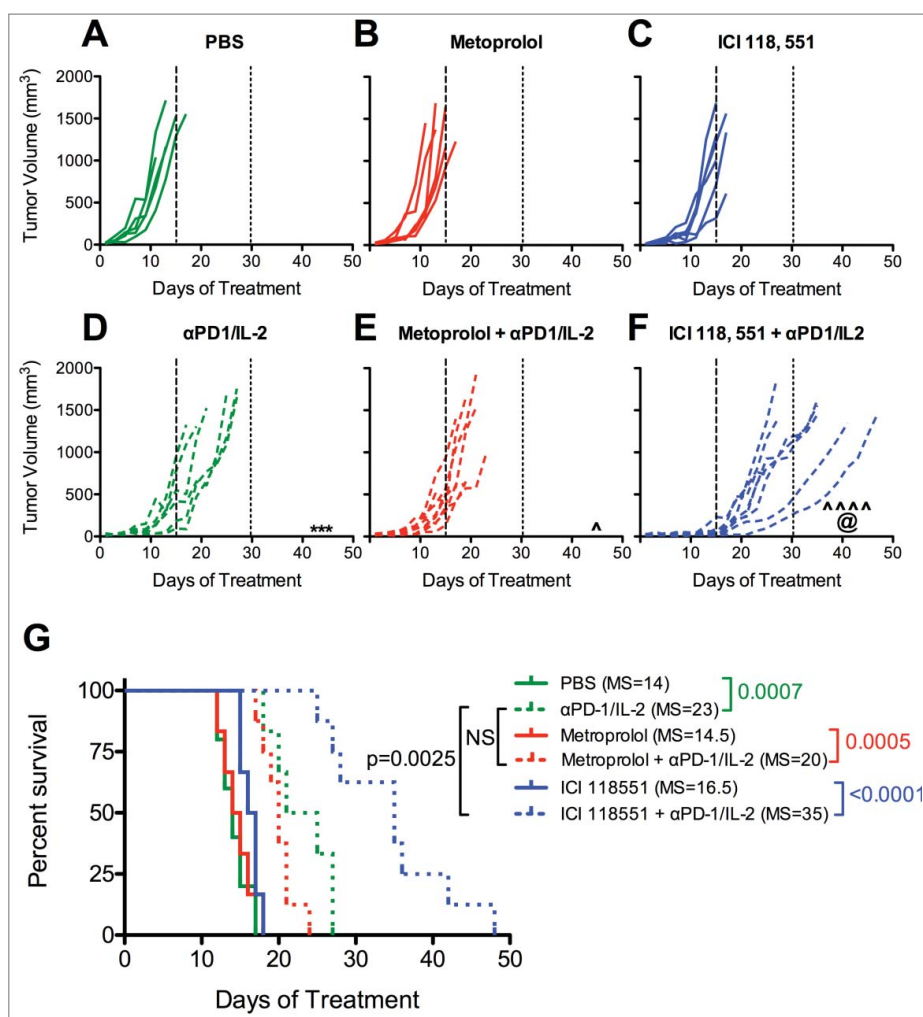


Figure 3. β_2 AR-selective blockade improves immunotherapy against melanoma. Mice were treated as indicated in Figure 2 with (A) PBS control, (B) Metoprolol (β_2 AR selective antagonist), (C) ICI 118, 551 (β_2 AR selective antagonist), (D) α PD-1/IL-2, (E) Metoprolol + α PD-1/IL-2, (F) ICI 118, 551 + α PD-1/IL-2. Days 15 and 30 are indicated with long- and short-dashed lines, respectively. N = 5–8/group; p values determined by mixed linear models; pairwise comparison to untreated: *** p < 0.001; pairwise comparison to same β -blocker: ^ p < 0.05, ^ p < 0.0001; pairwise comparison between immunotherapy alone and β -blocker + immunotherapy: @ p < 0.05. (G) Survival analysis. The median survival (days) is listed in parenthesis for each group. N = 5–7/group; p values determined by log rank test; NS = not significant; MS = median survival.

that pan β -blockers may in fact yield better clinical outcomes in patients with hypertension, diabetes, heart failure and acute myocardial infarction.¹⁹

While our results imply that the anti-melanoma immune response is improved with β AR blockade, direct effects on tumor growth may also be involved. Studies in murine xenograft models show that β AR blockade increases the efficacy of chemotherapies independent of adaptive immunity.^{14,15} However, the mechanistic relationship between β AR signaling, tumor growth and the anti-tumor immune response is not well understood in regards to any cancer, including melanoma. B16-F10 murine melanoma cells express a small proportion of functional β AR sites and thus may be responsive to manipulation of β AR signaling.⁴² Additionally, β AR expression has been detected in melanoma biopsies⁴³ purporting that human melanoma may be directly sensitive to β -blocker treatment. Thus, the full impact of β AR signaling on melanoma progression and treatment remains incompletely defined.

Our data support recent results showing that the addition of β AR blockade significantly improved the impact of α PD-1 therapy across distinct murine tumor models, including B16-

F10 melanoma expressing the model antigen ovalbumin and 4T1 mammary tumors.⁴⁴ This recent study yielded similar results to those shown here in terms of the impact of propranolol on α PD-1 therapy of melanoma, yet used an altered treatment protocol, including more frequent α PD-1 administration. Here we have extended these findings using the parental B16-F10 melanoma model and determined that improved anti-tumor immunity is dependent on β_2 AR blockade. Additionally, we show in the current study that β AR blockade had a greater impact on dual α PD-1/IL-2 therapy than on α PD-1 therapy alone. Our finding that pan or selective β_2 AR antagonists improved α PD-1 therapy but only minimally impacted IL-2-based therapy may indicate that β AR blockade and IL-2 target overlapping mechanisms, such as T cell proliferation. Indeed, norepinephrine decreases T cell proliferation by reducing IL-2 production.¹⁶ Thus, in the presence of high dose IL-2, autologous IL-2 production gained from β AR blockade is unlikely to contribute to the overall response. In contrast, β AR blockade may improve T cell proliferation through autocrine IL-2 production and then the addition of α PD-1 therapy may further enhance T cell survival and function. β AR blockade

may also promote T cell recruitment to the tumors by relieving their retention in the lymph nodes.⁴⁵ Alternatively, β AR blockade may predominantly affect the sensitivity of the tumor to the immune system.

The basis for our finding that administration of β -blockers with combined α PD-1/IL-2 was more effective than β AR blockade with α PD-1 or α PD-1/IL-2 alone suggests that these three agents cooperate to improve the response to the individual agents. β AR blockade with α PD-1 may sensitize the responding immune cells to the effects of IL-2. Alternatively, β AR blockade with IL-2 may promote T cell exhaustion that masks any synergy between these two agents, but is revealed by the inclusion α PD-1. Further studies are required to dissect the cellular and molecular nature of these interactions and to define whether a more targeted approach can be identified.

Both our pre-clinical and clinical data implicate β_2 AR blockade in improving the impact of immunotherapy to melanoma. Most patients in our study were taking β_1 -selective blockers rather than pan β -blockers. These data suggest the presence of a sizeable population of metastatic melanoma patients who might benefit from combined pan β AR blockade and immunotherapy. Our retrospective analysis provides a strong rationale to further evaluate how pan β AR blockade may impact immunotherapy in the clinic. While we were unable to extract other patient outcomes associated with pan β -blocker use in this retrospective cohort of patients, future prospective studies are needed to define the relationship between pan β AR blockade and clinical outcomes such as time to metastasis or recurrence and the degree of response to immunotherapy (complete response, partial response, stable disease, progressive disease). Given our results implicating the role of β_2 AR signaling in resistance to immunotherapy, an additional retrospective analysis could be performed investigating whether use of β_2 AR agonists, commonly used for control of asthma, negatively impact the response to immunotherapy. Prospective clinical trials are needed to definitively test the benefit of this approach, but the combination of already FDA-approved drugs could be rapidly implemented for metastatic melanoma and potentially other cancers.

Patients and methods

Clinical Data Collection

The retrospective analysis of patient data was performed under a protocol approved by the Penn State Cancer Institute Scientific Review Committee and the Penn State Hershey Medical Center Institutional Review Board. Due to the retrospective nature of the study without collection of new data or specimens, this study was exempt from patient consent. Patients aged 18 or older with a history of melanoma who received IL-2, α PD-1 and/or α CTLA-4 immunotherapy were eligible. Some patients received more than one type of immunotherapy. Data were collected on eligible patients diagnosed between January 1, 2000 and March 31, 2015. Data including age at the start of immunotherapy treatment, gender, melanoma stage at diagnosis, cancer treatment and β -blocker usage were extracted from the Penn State Cancer Institute Tumor Registry and the Penn State

Informatics for Integrating Biology and the Bedside (i2b2) System. Patients that were prescribed β_1 AR (Atenolol, Esmolol, and Metoprolol) and pan β AR (Carvedilol, Labetalol and Propranolol) antagonists were identified from these databases. Any patient who did not have data available in both the Tumor Registry and i2b2 were excluded. Patient medical records were also viewed to extract data missing from the Tumor Registry and i2b2.

Mice, cell lines and media

Female 6–8 week old C57BL/6J mice were purchased from The Jackson Laboratory and used within 2 weeks of receipt. All mice were maintained in specific pathogen-free conditions in a HEPA-filtered ventilated rack system at the Milton S. Hershey Medical Center animal facility. Mice were housed 5 or less per cage and fed and watered ad libitum. Mice were maintained in a 12-hour light/dark cycle. All experiments with animals were performed in accordance with institutional guidelines under protocol #46648 that was approved by the Institutional Animal Care and Use Committee at the Penn State College of Medicine. B16-F10 melanoma cells were obtained directly from the American Type Culture Collection (ATTC; CRL-6475) in February of 2015 and stored frozen in aliquots after 2 passages *in vitro*. Cells were cultured in RPMI-1640 with GlutaMAX™ (Gibco) supplemented with 10% fetal bovine serum (HyClone), 100 U/mL penicillin, 100 μ g/mL streptomycin, 2 mM L-glutamine, 50 μ M 2-mercaptoethanol, 10 mM HEPES, and 25 μ g/mL pyruvic acid. For *in vivo* experiments, cells were harvested at ~90% confluency at less than 6 passages from the original stock. 1×10^5 freshly harvested tumor cells were suspended in PBS and injected subcutaneously into the left flank of C57BL/6J mice.

Murine tumor model and treatment regimens

Following tumor implantation, mice were monitored daily to identify palpable tumors at which time they were randomized into treatment groups. Treatments were administered to mice bearing palpable tumors at ~6–9 days following inoculation (tumor volume ~20 – 100mm³). All treatments were given intraperitoneally in a volume of 200 μ l. Sterile PBS was used for control injections. IL-2 was obtained from Prometheus Inc. and administered at 120,000 IU twice a day for two five-day cycles separated by a two day break. α PD-1 (clone: RMP-1) was purchased from BioXcell and up to six 200 μ g doses were administered (days 1, 4, 8, 11, 15, 18). All β AR antagonists were purchased from Sigma and given daily for 3 weeks at the following concentrations: ICI 118,551 (1 mg/kg), metoprolol (10 mg/kg) and propranolol (10 mg/kg) as previously described.²⁷ Tumors were measured with digital calipers and tumor volume was calculated in mm³ using the formula (length*width*width)/2. Following the initiation of treatment, tumors were measured every two days until size reached 1000 mm³ at which point measurements were taken every day. The endpoint for survival studies included when tumor volume reached >1500 mm³, mice became lethargic or ascites developed prohibiting movement.

Statistical methods

Linear mixed models for longitudinal data were used to assess differences in tumor growth curves between different treatment groups. P-values less than 0.05 are reported and indicated on the figures. Kaplan-Meier survival plots and log-rank tests were used to display and analyze the time from the beginning of treatment to death or the date of sacrifice. All tests were two-sided. The statistical significance level used was 0.05, and it was not adjusted for multiple testing due to the exploratory nature of this study. For the analyses of clinical data, descriptive statistics were used to summarize patient's characteristics. The basic comparison of patient's characteristics between treatment groups was performed using Fisher's exact test or nonparametric Kruskal-Wallis test when appropriate. Overall survival was defined as the length of time from start of immunotherapy for the metastatic or recurrent disease (i.e. immunotherapy start date) to the date of death or last follow-up. Kaplan-Meier plots and log-rank tests were used to evaluate association of β -blocker usage and overall survival. All analyses were performed using statistical software SAS version 9.4, Graphpad Prism version 5.0f, and R programming language 3.1.2.

Disclosure of potential conflicts of interest

The authors declare no potential conflicts of interest

Acknowledgments

The authors thank Dr. Hong Zheng for providing editorial comments, Lisa Hand of the PSCI Cancer Registry for assistance with data collection, Matt Bolton and Masayo Mesler for assistance with data extraction from the i2b2 system, Jaenell Ditsios for data extraction support and Jeremy Haley for outstanding technical support. We also thank Prometheus Laboratories, Inc. for generously providing recombinant human IL-2 for this project.

Funding details

This project was supported, in part, by the Pennsylvania Department of Health using Tobacco CURE Funds. The Department specifically disclaims responsibility for any analyses, interpretations or conclusions. KK was supported by National Cancer Institute/National Institutes of Health training grant T32 CA060395.

ORCID

Kathleen M. Kokolus  <http://orcid.org/0000-0002-9088-5409>
Joseph J. Drabick  <http://orcid.org/0000-0002-7630-2721>
Todd D. Schell  <http://orcid.org/0000-0002-6788-6518>

References

- Siegel RL, Miller KD, Jemal A. Cancer statistics, 2016. *CA Cancer J Clin.* 2016;66:7–30. doi:10.3322/caac.21332.
- Bright R, Coventry BJ, Eardley-Harris N, Briggs N. Clinical response rates from interleukin-2 therapy for metastatic melanoma over 30 years' experience: a meta-analysis of 3312 patients. *J Immunother.* 2017;40:21–30. doi:10.1097/CJLI.000000000000149. PMID:27875387
- Atkins MB, Kunkel L, Sznol M, Rosenberg SA. High-dose recombinant interleukin-2 therapy in patients with metastatic melanoma: long-term survival update. *Can J Sci Am.* 2000;6 Suppl 1:S11–4.
- Atkins MB, Lotze MT, Dutcher JP, Fisher RI, Weiss G, Margolin K, Abrams J, Sznol M, Parkinson D, Hawkins M, et al. High-dose recombinant interleukin 2 therapy for patients with metastatic melanoma: analysis of 270 patients treated between 1985 and 1993. *J Clin Oncol.* 1999;17:2105–16. doi:10.1200/JCO.1999.17.7.2105. PMID:10561265
- Hodi FS, O'Day SJ, McDermott DF, Weber RW, Sosman JA, Haanen JB, Gonzalez R, Robert C, Schadendorf D, Hassel JC, et al. Improved survival with ipilimumab in patients with metastatic melanoma. *New England J Med.* 2010;363:711–23. doi:10.1056/NEJMoa1003466.
- Topalian SL, Sznol M, McDermott DF, Kluger HM, Carvajal RD, Sharfman WH, Brahmer JR, Lawrence DP, Atkins MB, Powderly JD, et al. Survival, durable tumor remission, and long-term safety in patients with advanced melanoma receiving nivolumab. *J Clin Oncol.* 2014;32:1020–30. doi:10.1200/JCO.2013.53.0105. PMID:24590637
- Hamid O, Robert C, Daud A, Hodi FS, Hwu WJ, Kefford R, Wolchok JD, Hersey P, Joseph RW, Weber JS, et al. Safety and tumor responses with lambrolizumab (anti-PD-1) in melanoma. *N Engl J Med.* 2013;369:134–44. doi:10.1056/NEJMoa1305133. PMID:23724846
- Koller KM, Wang W, Schell TD, Cozza EM, Kokolus KM, Neves RI, Mackley HB, Pameijer C, Leung A, Anderson B, et al. Malignant melanoma-The cradle of anti-neoplastic immunotherapy. *Crit Rev Oncol Hematol.* 2016;106:25–54. doi:10.1016/j.critrevonc.2016.04.010. PMID:27637351
- Hughes T, Klairmont M, Sharfman WH, Kaufman HL. Interleukin-2, ipilimumab, and anti-PD-1: clinical management and the evolving role of immunotherapy for the treatment of patients with metastatic melanoma. *Cancer Biol Ther.* 2015. doi:10.1080/15384047.2015.1095401. [Epub ahead of print]
- Kin NW, Sanders VM. It takes nerve to tell T and B cells what to do. *J Leukoc Biol.* 2006;79:1093–104. doi:10.1189/jlb.1105625. PMID:16531560
- Bonneau RH, Kiecolt-Glaser JK, Glaser R. Stress-induced modulation of the immune response. *Ann N Y Acad Sci.* 1990;594:253–69. doi:10.1111/j.1749-6632.1990.tb40485.x. PMID:2165759
- Kokolus KM, Capitano ML, Lee CT, Eng JW, Waight JD, Hylander BL, Sexton S, Hong CC, Gordon CJ, Abrams SI, et al. Baseline tumor growth and immune control in laboratory mice are significantly influenced by subthermoneutral housing temperature. *Proc Natl Acad Sci U S A.* 2013;110:20176–81. doi:10.1073/pnas.1304291110. PMID:24248371
- Kokolus KM, Spangler HM, Povinelli BJ, Farren MR, Lee KP, Repasky EA. Stressful presentations:mild cold stress in laboratory mice influences phenotype of dendritic cells in naïve and tumor-bearing mice. *Front Immunol.* 2014;5:23. doi:10.3389/fimmu.2014.00023. PMID:24575090
- Eng JWL, Reed CB, Kokolus KM, Pitoniak R, Utley A, Bucsek MJ, Ma WW, Repasky EA, Hylander BL, et al. Housing temperature-induced stress drives therapeutic resistance in murine tumor models through β 2-adrenergic receptor activation. *Nat Commun.* 2015;10:6426. doi:10.1038/ncomms7426.
- Pasquier E, Ciccolini J, Carre M, Giacometti S, Fanciullino R, Pouchy C, Montero MP, Serdjebi C, Kavallaris M, André N, et al. Propranolol potentiates the anti-angiogenic effects and anti-tumor efficacy of chemotherapy agents: implication in breast cancer treatment. *Oncotarget.* 2011;2:797–809. doi:10.18632/oncotarget.343. PMID:22006582
- Slota C, Shi A, Chen G, Bevans M, Weng NP. Norepinephrine preferentially modulates memory CD8 T cell function inducing inflammatory cytokine production and reducing proliferation in response to activation. *Brain Behav Immun.* 2015;46:168–79. doi:10.1016/j.bbi.2015.01.015. PMID:25653192
- Hoes AW. beta blockers for heart failure. *Bmj.* 2016;353:i2074. doi:10.1136/bmj.i2074. PMID:27099266
- Yancy CW, Jessup M, Bozkurt B, Butler J, Casey DE, Jr., Drazner MH, Fonarow GC, Geraci SA, Horwich T, Januzzi JL, et al. 2013 ACCF/AHA guideline for the management of heart failure: executive summary: a report of the American College of Cardiology Foundation/American Heart Association Task Force on practice guidelines. *Circulation.* 2013;128:1810–52. doi:10.1161/CIR.0b013e31829e8807. PMID:23741057

19. DiNicolantonio JJ, Fares H, Niazi AK, Chatterjee S, D'Ascenzo F, Cer-rato E, Biondi-Zoccai G, Lavie CJ, Bell DS, O'Keefe JH, et al. beta-Blockers in hypertension, diabetes, heart failure and acute myocardial infarction: a review of the literature. *Open heart*. 2015;2:e000230. doi:10.1136/openhrt-2014-000230. PMID:25821584
20. Powe DG, Voss MJ, Zanker KS, Habashy HO, Green AR, Ellis IO, Entschladen F.. Beta-blocker drug therapy reduces secondary cancer formation in breast cancer and improves cancer specific survival. *Oncotarget*. 2010;1:628–38. doi:10.18632/oncotarget.197. PMID:21317458
21. Barron TI, Connolly RM, Sharp L, Bennett K, Visvanathan K. Beta blockers and breast cancer mortality: a population- based study. *J Clin Oncol*. 2011;29:2635–44. doi:10.1200/JCO.2010.33.5422. PMID:21632503
22. Ganz PA, Habel LA, Weltzien EK, Caan BJ, Cole SW. Examining the influence of beta blockers and ACE inhibitors on the risk for breast cancer recurrence: results from the LACE cohort. *Breast Cancer Res Treat* 2011;129:549–56. doi:10.1007/s10549-011-1505-3. PMID:21479924
23. Melhem-Bertrandt A, Chavez-Macgregor M, Lei X, Brown EN, Lee RT, Meric-Bernstam F, Sood AK, Conzen SD, Hortobagyi GN, Gonzalez-Angulo AM. Beta-blocker use is associated with improved relapse-free survival in patients with triple-negative breast cancer. *J Clin Oncol*. 2011;29:2645–52. doi:10.1200/JCO.2010.33.4441. PMID:21632501
24. Botteri E, Munzone E, Rotmensz N, Cipolla C, De Giorgi V, Santillo, B, Zanelotti A, Adamoli L, Colleoni M, Viale G, et al. Therapeutic effect of beta-blockers in triple-negative breast cancer postmenopausal women. *Breast Cancer Res Treat*. 2013;140:567–75. doi:10.1007/s10549-013-2654-3. PMID:23912960
25. Diaz ES, Karlan BY, Li AJ. Impact of beta blockers on epithelial ovarian cancer survival. *Gynecol Oncol*. 2012;127:375–8. doi:10.1016/j.ygyno.2012.07.102. PMID:22819786
26. Watkins JL, Thaker PH, Nick AM, Ramondetta LM, Kumar S, Urbauer DL, Matsuo K, Squires KC, Coleman RL, Lutgendorf SK, et al. Clinical impact of selective and nonselective beta-blockers on survival in patients with ovarian cancer. *Cancer*. 2015;121:3444–51. doi:10.1002/cncr.29392. PMID:26301456
27. Leigh ND, Kokolus KM, O'Neill RE, Du W, Eng JW, Qiu J, Chen GL, McCarthy PL, Farrar JD, Cao X, et al. Housing temperature-induced stress is suppressing murine graft-versus-host disease through beta2-adrenergic receptor signaling. *J Immunol*. 2015;195:5045–54. doi:10.4049/jimmunol.1500700. PMID:26459348
28. Estrada LD, Agac D, Farrar JD. Sympathetic neural signaling via the beta2-adrenergic receptor suppresses T-cell receptor-mediated human and mouse CD8(+) T-cell effector function. *Eur J Immunol*. 2016;46:1948–58. doi:10.1002/eji.201646395. PMID:27222010
29. Kuzu OF, Nguyen FD, Noory MA, Sharma A. Current state of animal (mouse) modeling in melanoma research. *Cancer Growth Metastasis*. 2015;8:81–94. PMID:26483610
30. Fidler IJ, Bucana C. Mechanism of tumor cell resistance to lysis by syngeneic lymphocytes. *Cancer Res*. 1977;37:3945–56. PMID:908034
31. Kleffel S, Posch C, Barthel SR, Mueller H, Schlapbach C, Guenova E, Elco CP, Lee N, Juneja VR, Zhan Q, et al. Melanoma cell-intrinsic PD-1 receptor functions promote tumor growth. *Cell*. 2015;162:1242–56. doi:10.1016/j.cell.2015.08.052. PMID:26359984
32. Chen S, Lee LF, Fisher TS, Jessen B, Elliott M, Evering W, Logronio K, Tu GH, Tsaparikos K, Li X, et al. Combination of 4-1BB agonist and PD-1 antagonist promotes antitumor effector/memory CD8 T cells in a poorly immunogenic tumor model. *Cancer Immunol Res*. 2015;3:149–60. doi:10.1158/2326-6066.CIR-14-0118. PMID:25387892
33. Harry JD, Norris SC, Percival GC, Young J. The dose in humans at which ICI 118,551 (a selective beta 2-adrenoceptor blocking agent) demonstrates blockade of beta 1-adrenoceptors. *Clin Pharmacol Ther*. 1988;43:492–8. doi:10.1038/clpt.1988.64. PMID:2896555
34. Maisel AS, Fowler P, Rearden A, Motulsky HJ, Michel MC. A new method for isolation of human lymphocyte subsets reveals differential regulation of beta-adrenergic receptors by terbutaline treatment. *Clin Pharmacol Ther*. 1989;46:429–39. doi:10.1038/clpt.1989.161. PMID: 2551559
35. Grailer JJ, Haggadone MD, Sarma JV, Zetoune FS, Ward PA. Induction of M2 regulatory macrophages through the beta2-adrenergic receptor with protection during endotoxemia and acute lung injury. *J innate immun*. 2014;6:607–18. doi:10.1159/000358524. PMID: 24642449
36. Kizaki T, Shirato K, Sakurai T, Ogasawara JE, Oh-ishi S, Matsuoka T, Izawa T, Imaizumi K, Haga S, Ohno H. Beta2-adrenergic receptor regulate Toll-like receptor 4-induced late-phase NF-kappaB activation. *Mol Immunol*. 2009;46:1195–203. doi:10.1016/j.molimm.2008.11.005. PMID:19167076
37. Sanders VM, Baker RA, Ramer-Quinn DS, Kasprowicz DJ, Fuchs BA, Street NE. Differential expression of the beta2-adrenergic receptor by Th1 and Th2 clones: implications for cytokine production and B cell help. *J Immunol*. 1997;158:4200–10. PMID:9126981
38. Guereschi MG, Araujo LP, Maricato JT, Takenaka MC, Nascimento VM, Vivanco BC, Reis VO, Keller AC, Brum PC, Basso AS. Beta2-adrenergic receptor signaling in CD4+ Foxp3+ regulatory T cells enhances their suppressive function in a PKA-dependent manner. *Eur J Immunol*. 2013;43:1001–12. doi:10.1002/eji.201243005. PMID:23436577
39. Grebe KM, Takeda K, Hickman HD, Bailey AL, Embry AC, Bennink JR, Yewdell JW. Cutting edge: Sympathetic nervous system increases proinflammatory cytokines and exacerbates influenza A virus pathogenesis. *J Immunol*. 2010;184:540–4. doi:10.4049/jimmunol.0903395. PMID:20018617
40. Kalinichenko VV, Mokyr MB, Graf LH, Jr., Cohen RL, Chambers DA. Norepinephrine-mediated inhibition of antitumor cytotoxic T lymphocyte generation involves a beta-adrenergic receptor mechanism and decreased TNF-alpha gene expression. *J Immunol*. 1999;163:2492–9. PMID:10452985
41. Zalli A, Bosch JA, Goodyear O, Riddell N, McGettrick HM, Moss P, Wallace GR. Targeting β 2 adrenergic receptors regulate human T cell function directly and indirectly. *Brain Behav Immun*. 2015;45:211–8. doi:10.1016/j.bbi.2014.12.001. PMID:25526818
42. M. Tsuji, T. Kuno, C. Tanaka, M. Ichihashi, Y. Mishima. Beta-adrenergic receptors of B16 melanoma cell. *Arc Dermatol Res*. 1983;275:415–416. doi:10.1007/BF00417345.
43. Yang EV, Kim SJ, Donovan EL, Chen M, Gross AC, Webster Marketon JI, Barsky SH, Glaser R. Norepinephrine upregulates VEGF, IL-8, and IL-6 expression in human melanoma tumor cell lines: implications for stress-related enhancement of tumor progression. *Brain Behav Immun*. 2009;23:267–75. doi:10.1016/j.bbi.2008.10.005. PMID:18996182
44. Bucsek MJ, Qiao G, MacDonald CR, Giridharan T, Evans L, Niedzwecki B, Liu H, Kokolus KM, Eng JW, Messmer MN, et al. beta-adrenergic signaling in mice housed at standard temperatures suppresses an effector phenotype in CD8+ T cells and undermines checkpoint inhibitor therapy. *Cancer Res*. 2017;77:5639–51. doi:10.1158/0008-5472.CAN-17-0546. PMID:28819022
45. Nakai A, Hayano Y, Furuta F, Noda M, Suzuki K. Control of lymphocyte egress from lymph nodes through beta2-adrenergic receptors. *J Exp Med*. 2014;211:2583–98. doi:10.1084/jem.20141132. PMID:25422496