

SHORT ARTICLE



## *linc00673* (*ERLR01*) is a prognostic indicator of overall survival in breast cancer

Ubaidat Abdul-Rahman<sup>a</sup>, Balázs Gyórfy<sup>ib,b,c</sup>, and Brian D. Adams<sup>ib,a,d</sup>

<sup>a</sup>The RNA Institute, University at Albany, State University of New York, Albany, NY, USA; <sup>b</sup>MTA TTK Lendület Cancer Biomarker Research Group, Hungarian Academy of Sciences, Budapest, Hungary; <sup>c</sup>Semmelweis University 2nd Dept. of Pediatrics, Budapest, Hungary; <sup>d</sup>Investigative medicine Program, Yale University School of Medicine, New Haven, CT, USA

### ABSTRACT

LncRNAs are novel noncoding RNAs involved in the epigenetic regulation of gene expression by recruiting ribonucleoprotein complexes to specific genomic loci to initiate histone methylation and/or other chromatin modifications. LncRNAs themselves function as tumor suppressors or oncogenes, depending on the gene regulatory networks they govern. We identified *linc00673* (*ERLR01*) as a marker of overall survival (OS) in breast cancer patients. Specifically, *ERLR01* levels were elevated in triple-negative breast cancer (TNBC) as compared with Luminal-A, Luminal-B, and HER2 breast cancer subtypes. *ERLR01* levels were also inversely correlated with breast cancer survival across all breast cancer patients. Upon stratification, OS in ER $\alpha$ <sup>-</sup> tumors correlated with negative overall survival, while in ER $\alpha$ <sup>+</sup> tumors, *ERLR01* correlated with positive outcomes. This suggests *ERLR01* is modulated by hormone signaling in breast cancer. Gene-network analysis revealed *ERLR01* correlated with distinct pathways including “epithelial development” and “cellular differentiation.” These data suggest *ERLR01* operates as an oncogene in TNBC, as well as a biomarker in breast cancer patients.

### ARTICLE HISTORY

Received 11 April 2017  
Revised 7 May 2017  
Accepted 8 May 2017

### KEYWORDS



breast cancer; *ERLR01*;  
estrogen signaling;  
hormone-regulation; lncRNA;  
survival outcomes


## Introduction

Long-noncoding RNAs function as decoys, regulators of translation, and/or molecular scaffolds that recruit chromatin modifying enzymes to distinct genomic loci.<sup>1–4</sup> LncRNA transcripts are transcribed in sense and/or anti-sense orientation,<sup>5,6,7</sup> and lncRNA transcription depends upon a tightly controlled regulatory network that as of yet, is still not well understood. The ENCODE Consortium determined the abundance and genomic location of many lncRNAs across several species, which in various cases are conserved through positional synteny.<sup>8,9</sup> LncRNAs reside near protein coding regions and function in *cis* to maintain the surrounding chromatin in an open and epigenetically active state. In other cases, lncRNAs are transcribed in an anti-sense orientation to a protein-coding gene, which in turn recruits histone chromatin-modifying complexes that support gene silencing.<sup>10,11</sup> The nomenclature for a particular lncRNA is derived, in part, from the closest neighboring protein coding gene. For instance, lincRNA-p21 neighbors

*CDKN1A* and regulates *CDKN1A* (p21) expression, as evidenced by knockdown studies where lincRNA-p21 loss phenocopies the effects imparted by the loss of *CDKN1A*.<sup>12,13</sup> Additionally, genes such as ANRIL (anti-sense noncoding RNA in the *INK4* locus), which is an antisense transcript produced within the *CDKN2B* locus, recruits the PRC1/2 complex and inhibits *CDKN2B* gene expression.<sup>14,15</sup>

There has been a recent effort to elucidate lncRNA function by identifying particular cellular states and/or pathophysiologies associated with dysregulated lncRNA expression.<sup>16</sup> In this context, modulating lncRNA abundance, either through gain- or loss-of-function approaches serves as an opportunity to understand which gene-regulatory networks a specific lncRNA is associated with. Furthermore, alteration of lncRNA expression that promotes changes in cellular phenotypes indicates a particular lncRNA could be a driver of certain disease or pathophysiological states.

**CONTACT** Brian D. Adams, Ph.D  [brian.adams@yale.edu](mailto:brian.adams@yale.edu); [bdadams@albany.edu](mailto:bdadams@albany.edu)  Principle Investigator/Research Faculty, The RNA Institute/State University of New York, 1400 Washington Ave, Albany, NY 12222 Teaching Faculty, Investigative Medicine Program, Yale University School of Medicine, 333 Cedar Street, New Haven, CT 06520.

 Supplemental data for this article can be accessed on the [publisher's website](#).

Several lncRNAs have been identified as important mediators in chronic diseases, such as *PTCSC3* in papillary thyroid carcinoma, and *ANRIL* in type-2 diabetes.<sup>17,18</sup> Additionally, *MALAT-1* is expressed in the heart, lung, and kidneys, but is elevated in lung tumor tissue and has elevated biologic activity in metastatic lung adenocarcinoma as compared with a benign or pre-malignant state.<sup>19–22</sup> *HOTAIR*, initially described in fibroblasts, regulates the cluster of HOX genes through *cis*- as well as *trans*-regulatory mechanisms,<sup>16</sup> and is associated with oncogenesis. *HOTAIR* expression levels are high in several tumors types including lung, breast, and prostate. Furthermore, ectopic expression of *HOTAIR* results in aberrant PRC2 function and improper recruitment of PRC2-associated complexes to the correct genomic loci. This process facilitates promiscuous gene regulation allowing for a pro-tumorigenic state.<sup>23</sup> Several other lncRNAs including *PCAT-1* and *GAS5* also have tumorigenic function; however, there is a growing need to elucidate the function of the nearly 118,000 recently annotated human lncRNAs. Given lncRNAs serve as decoys, function as scaffolds that mediate protein-protein interactions, and promote chromatin remodeling through recruitment of DNA-modifying enzymes to distinct genomic loci, the capability to tease out specific mechanisms associated with a particular lncRNA remains a challenge. However, determining putative lncRNA functions can be initiated through investigation of associative miRNA and mRNA gene regulatory networks, which could in turn be used to determine if a lncRNA harbors putative oncogenic potential when dysregulated.

In this study, we identified *ERRLR01* (*Estrogen-Receptor Related LincRNA 01*), as a lncRNA whose abundance was differentially expressed across four breast cancer subtypes within Affymetrix and The Cancer Genome Atlas (TCGA) data sets. Furthermore, *ERRLR01* expression correlated with overall survival (OS) and relapse-free survival (RFS) outcomes within an Affymetrix data set. Previous reports have described *ERRLR01* as a prognostic marker in non-small cell lung cancer,<sup>24</sup> and as a pro-metastatic lncRNA in melanoma.<sup>25</sup> In our model, *ERRLR01* was aberrantly expressed across breast cancer tumor subtypes and cell lines. Therefore, we performed gene network analysis and identified a series of pathways highly correlated with *ERRLR01* expression, and further ascertained putative miRNA-lncRNA interactions that could be

responsible for modulating *ERRLR01* expression in specific cellular contexts. Overall, these studies indicate *ERRLR01* may function as an oncogene in breast cancer, and that anti-sense strategies developed to target this lncRNA may be a new therapeutic approach to treat breast cancer patients.

## Materials and methods

### Gene chip database construction

To develop survival analysis software, a gene chip database was first established as described previously.<sup>26</sup> In brief, a GEO search was made to identify breast cancer gene expression datasets with available survival data, with each dataset containing at least 30 patient samples. The raw .CEL files were downloaded and MAS5 normalized in the R statistical environment (<http://www.r-project.org>) using the Affy Bioconductor library. Database quality control and removal of duplicate samples were performed as described.<sup>27</sup> This analysis methodology was then used on a curated Affymetrix data set described in Györfy, B *et al.*, 2013.<sup>39</sup> Patient samples from the Affymetrix data sets were primarily of Caucasian origin, and biopsies were obtained from the primary breast tumor. This curated data set contains over 2000 breast cancer patient samples, all containing survival endpoints, with a majority of samples being ER $\alpha$ +.<sup>39</sup>

Specifically, Affymetrix data set analysis was performed whereby expression of *ERRLR01* in each patient sample was determined using probe set 227452\_at. The original signal was MAS5 normalized, and listed in rank-order via spearman rank analysis.<sup>38,39</sup> For *ERRLR01*, the probe set 227452\_at was used. This probe set has specificity of one of the *ERRLR01* transcripts and covers the full exonic region of the linc00673.1 variant.<sup>28</sup> *ESR1* and *HER2* status was determined for each sample using the probe sets 205225\_at and 216836\_s\_at as described earlier.<sup>29</sup> To determine receptor status, the raw expression cutoff values of 500 and 1,150 were used for *ESR1* and *HER2*, respectively.

### RNA-Seq database construction

RNA-Seq measurement for breast cancer patients were published by The Cancer Genome Atlas (TCGA) of the National Cancer Institute (<https://cancergenome.nih.gov/>)<sup>30</sup> and we downloaded the

pre-processed level 3 data generated using the Illumina HiSeq 2000 RNA Sequencing Version 2 platform. The primary tumor samples from this dataset were obtained from patients primarily of Caucasian origin. For these samples, expression levels were determined using a combination of MapSplice and RSEM. We have combined the individual patient files in R using the plyr package. TCGA data sets also underwent Kaplan-Meier survival analysis using the statistical methodologies highlighted below.

### Quantitative real time PCR

For qPCR, cells were lysed in TRIzol (Life Technologies), and total RNA was used as the input for subsequent RT-PCR reactions. For lncRNA analysis, cDNA synthesis and qRT-PCR were performed according to the miScript II RT Kit (Qiagen) and miScript SYBR<sup>®</sup> Green PCR Kit (Qiagen) protocols respectively.<sup>31</sup> MiRNA levels were normalized to RNU6B levels. For mRNA analysis, cDNA synthesis and qRT-PCR were performed per the RT<sup>2</sup> First Strand Kit and RT<sup>2</sup> qPCR Primer assay (Qiagen) protocols respectively.

### Genetic-network and Gene Ontology term analysis

For gene pathway analysis, Spearman-Rank analysis was performed on the entire Affymetrix data. We identified the top 200 genes most highly correlated with *ERRLR01* across all patient samples. The top 200 genes are equivalent to the top 1% of protein coding genes in the Spearman-rank analysis. We used this gene set to perform Gene Ontology (GO) term analysis using the WebGestalt algorithm.<sup>55</sup> In these studies, we performed a series of data queries including GO term analysis, KEGG analysis, and miRNA target analysis. The algorithm compares the enrichment of genes uploaded in the program compared with reference gene names of the entire human genome. Utilizing hypergeometric analysis with Benjamini and Hochberg multiple test adjustment (i.e., FDR analysis), we identified significant gene pathways using a cutoff of  $p$  value < 0.05. Only pathways containing 6 genes or more from the genes loaded into the algorithm were analyzed. Spearman-Rank analysis was also used to identify genes that were the most anti-correlated with *ERRLR01*. Similar statistical analysis was performed, and the resulting data are highlighted in the supplemental data.

### Statistical analysis

Molecular subtypes were designated per the StGallen guidelines utilizing expression of ESR1, HER2, and MKI67 (PMID: 23917950). This includes a TNBC cohort (ESR1- and HER2-negative patients), a HER2-enriched cohort (HER2-positive and ESR1-negative patients), a Luminal A cohort (ESR1-positive and HER2-negative patients with low MKI67), and a Luminal B cohort (ESR1-positive and HER2-negative patients with high MKI67 expression).

Survival analysis was performed in the R statistical environment (<http://www.r-project.org>) using the survival Bioconductor library. For the expression of *ERRLR01*, each percentile (of expression) between the lower and upper quartiles was computed and the best performing threshold was used as the final cutoff in the Cox regression analysis. Kaplan-Meier survival plot, and the hazard ratio with 95% confidence intervals and log-rank P Values were calculated and plotted in R. Kruskal-Wallis test was used to compare continuous expression among multiple cohorts and a Mann-Whitney test was used to compare each cohort tested. Statistical significance was set at  $p$  value < 0.05.

## Results

### *ERRLR01* is highly expressed in estrogen receptor negative tumor subtypes

We performed an *in-silico* screen of lncRNAs that were differentially expressed across breast cancer patients, or between normal and breast cancer tissue samples. We used numerous databases including MiTranscriptome,<sup>32</sup> which is a meta-assembly of 6,503 RNA-Seq libraries (Figure S1). We identified *ERRLR01* as a long noncoding RNA expressed at higher levels in breast cancer patient samples as compared with normal breast tissue. *ERRLR01* is a recently described lncRNA that has sequence similarity to the steroid receptor RNA activator 1 (SRA-like-non-coding RNA), and hence termed *ERRLR01*. *ERRLR01* is located on chromosome 17q24.3, a region associated with genomic breakpoints within a variety of cancer types including breast, lung, colorectal, and uterine leiomyomas.<sup>33-37</sup> Additionally, *ERRLR01* was identified to play a role in melanoma invasion,<sup>25</sup> and was linked with worse overall survival in melanoma patients. *ERRLR01* expression was also previously reported to be elevated in melanoma cell lines post

invasion, suggesting *ERRLR01* promotes invasion. Given the role of *ERRLR01* in melanoma, and the finding that *ERRLR01* was elevated in breast cancer specimens as compared with normal breast tissue, we decided to investigate whether *ERRLR01* could serve as a biomarker of breast cancer progression and/or disease onset.

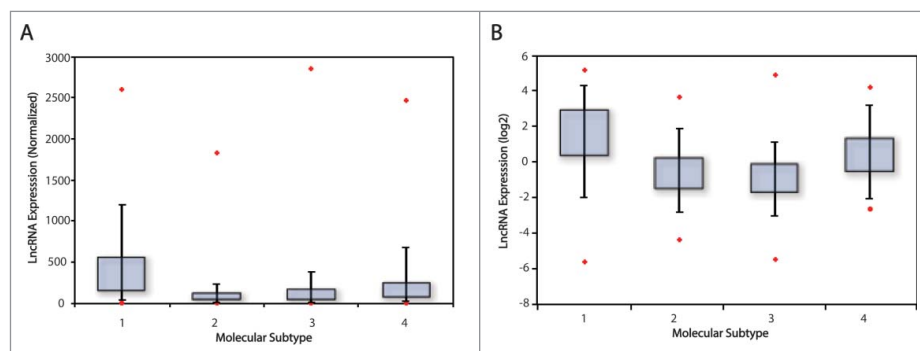
### ***ERRLR01 is a predictor of overall survival in breast cancer***

We analyzed Affymetrix U133 gene chip data, as well as the breast cancer TCGA data set and determined that across four distinct breast cancer subtypes, as determined by PAM50 classification, *ERRLR01* was elevated in TNBC patient samples (Fig. 1). The analysis of the Affymetrix data set was performed by Spearman-rank analysis whereby expression of *ERRLR01* in each patient sample was determined by probe set 227452\_at and whereby the signal was MAS5 normalized, and listed in rank-order.<sup>38,39</sup> The mean rank-order across all patients within each sample subset was determined and is depicted as a box-whisker-plot (Fig. 1a). *ERRLR01* expression was elevated in both TNBC as well as HER2<sup>+</sup> patient subtypes when compared with Luminal-A and Luminal-B subtypes. This indicated *ERRLR01* was inversely correlated with ER $\alpha$  status in breast cancer patients. To validate this result, we assessed the expression of *ERRLR01* in the breast cancer TCGA data set.<sup>30</sup> Here, *ERRLR01* expression was determined using the MapSplice Algorithm,<sup>40</sup> and the resultant log(2) transformed normalized data was plotted as a box-whisker-plot (Fig. 1b). In this datasets

*ERRLR01* expression was elevated in both TNBC and HER2<sup>+</sup> patient samples. Together, results from both patient datasets indicated that *ERRLR01* expression was elevated in ER $\alpha$ <sup>-</sup> tumor subtypes, as compared with ER $\alpha$ <sup>+</sup> tumor subtypes ( $p$  value  $< 1 \times 10^{-16}$ , as determined by Kruskal-Wallis analysis).

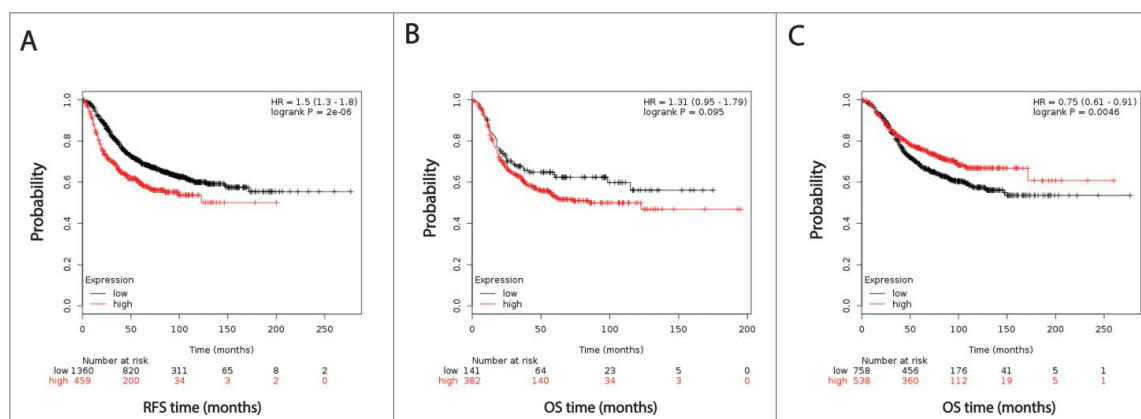
This analysis indicated that *ERRLR01* may be inversely correlated with hormone signaling, as hormone-sensitive tumors expressed lower levels of *ERRLR01* than those with hormone-independent tumors. To test this hypothesis Kaplan-Meier survival and Cox regression analyses were performed on the Affymetrix dataset described above. We determined that within all breast cancer patient samples, high *ERRLR01* expression inversely correlated with RFS (Fig. 2a); HR = 1.5 with a  $p$  value  $< 5 \times 10^{-6}$ . When segregating patients by ER $\alpha$  status, we found that ER $\alpha$ <sup>+</sup> patients with high expression of *ERRLR01* had better overall survival (OS) rates than those with low *ERRLR01* expression (Fig. 2c); HR = 0.75 with a  $p$  value  $< 0.0046$ . We did not perform RFS analysis after patient stratification due to smaller sample size and reduced statistical power. Interestingly, in patients with ER $\alpha$ <sup>-</sup> tumors, *ERRLR01* expression was inversely correlated with OS (Fig. 2b); HR = 1.31 with a  $p$  value  $< 0.095$ . This was a unique finding and suggests *ERRLR01* is regulated by ER $\alpha$  or that ER $\alpha$  signaling controls *ERRLR01* expression.

To test this notion further, we assessed *ERRLR01*-related OS in breast cancer patients after PAM50 sub-stratification. Within Basal-like (i.e., TNBC) and HER2-positive breast cancer subtypes high *ERRLR01* expression inversely correlated with OS, while in



**Figure 1.** LncRNA expression in breast cancer patient populations which was acquired using an Affymetrix U133A array dataset, and is depicted by box-whisker-plots. In this analysis, *ERRLR01* expression was stratified into 4 subpopulations, and the mean rank expression was reported (A). 1 = TNBC,  $n = 577$ ; 2 = Luminal A,  $n = 1432$ ; 3 = Luminal B,  $n = 632$ ; 4 = HER2<sup>+</sup>,  $n = 301$ . *ERRLR01* expression in the TCGA data set (B), and data are presented in a log(2) transformed format. 1 = TNBC,  $n = 154$ ; 2 = Luminal A,  $n = 91$ ; 3 = Luminal B,  $n = 538$ ; 4 = HER2<sup>+</sup>,  $n = 53$ . \*denotes significance at  $P < 1 \times 10^{-16}$  as determined by Kruskal-Wallis one-way variance analysis testing.





**Figure 2.** Kaplan-Meier and Cox regression analysis of *ERRLR1* levels and OS in breast cancer patients. Data was obtained from Affymetrix datasets, and analyzed on KM-Plotter software. (A) represents RFS in all breast cancer patients, (B) depicts OS in ER-negative breast cancer patients, and panel (C) depicts OS in ER-positive breast cancer patients. Hazard ratios and log-rank *p* values are reported for each analysis. *ERRLR1* correlates with poor survival outcomes in “all patients” as well as “ER-negative patients,” while positively correlates with OS in “ER-positive patients.”

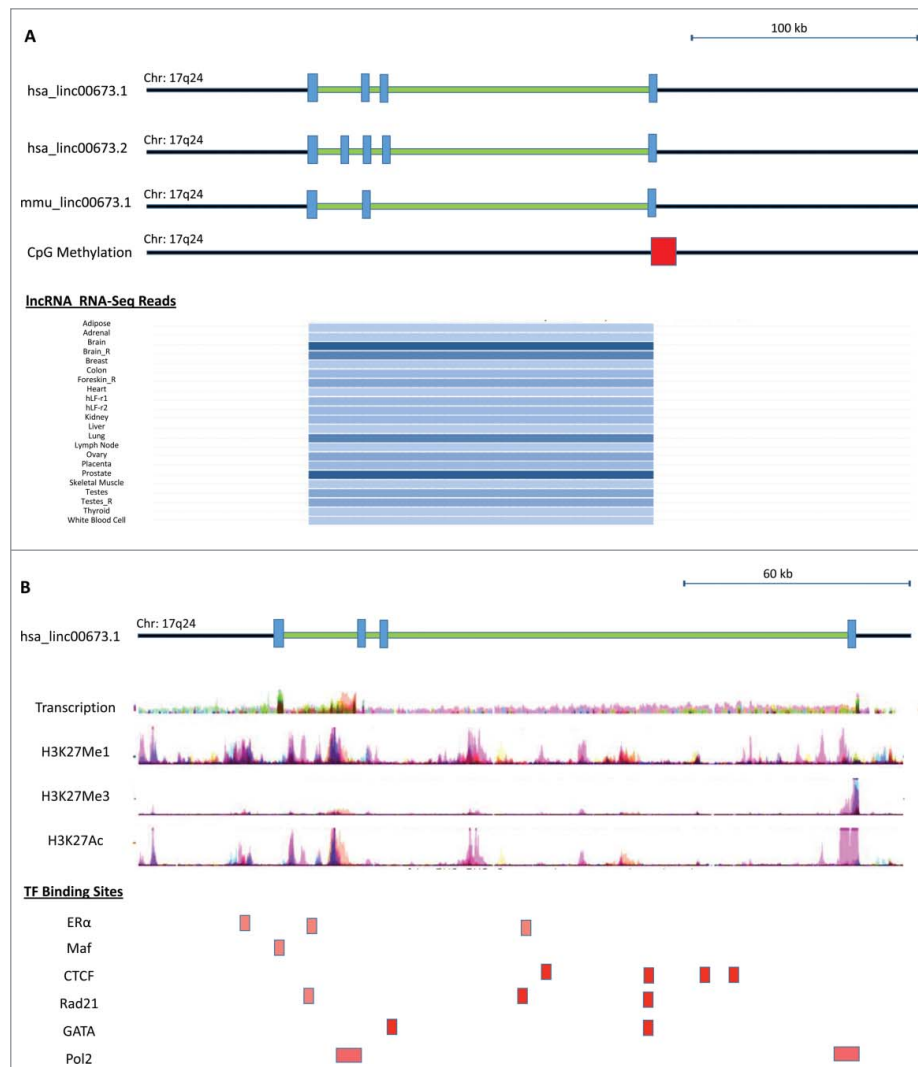
Luminal-A and Luminal-B subtypes *ERRLR1* expression correlated with OS (Figure S2). We attempted to validate this survival relationship using the TCGA dataset; however, we did not find any significant survival benefit based on differential *ERRLR1* expression. It should be noted that overall survival analysis in TCGA is difficult to assess, given most samples are acquired from primary tumor samples with only 5–10 yr follow-up.

### Characterization of the *ERRLR1* locus and interacting transcription factors

Given the significant *ERRLR1*-related OS ratios in hormone-dependent and hormone-independent breast cancer patients, we wanted to elucidate a putative mechanism for such a relationship. To do this we first determined the genomic location of *ERRLR1* and inquired as to which putative regulatory moieties could serve as signals to recruit potential RNA- and protein-binding components to the *ERRLR1* transcript. *ERRLR1* is positionally conserved via synteny within the human and mouse genome (Fig. 3a). A moderate level of transcription was observed in both RNA-Seq data on nine cell lines from ENCODE, and from lncRNA RNA-Seq datasets where *ERRLR1* was expressed highest in testes and brain tissue, but lower in normal breast and other tissues. Furthermore, evidence of CpG promoter methylation was observed (Methylation Score = 117) using the UCSC genome browser dataset. Overall these data support the notion that *ERRLR1* is expressed at low to moderate levels in

most normal tissue specimens or cell lines. These findings are also in line with the Affymetrix and TCGA datasets, where the raw FPKMs for *ERRLR1* were  $\leq 10$  FPKM.

Upon further characterization of the *ERRLR1* genomic loci we identified H3K4Me1 and H3K4Me3 marks between *ERRLR1* exons 3 and 4 of the *linc00673.1* transcript. In some cases this overlapped with CTCF binding sites, as well as other estrogen-related transcription factors (Fig. 3b). The convergence of CTCF binding on the *ERRLR1* genomic loci was of particular interest since CTCF is a well-documented  $17\beta$ -estradiol regulated protein whose function is that of an insulator to prevent enhancer element binding to particular promoters.<sup>41–47</sup> As an example, CTCF is a factor known to be regulated by ER $\alpha$  in MCF-7 cells, and therefore could also affect *ERRLR1* levels in these  $17\beta$ -estradiol-sensitive cell lines. This notion is supported by GEO datasets, (see Figure S3). Therefore, *ERRLR1* could operate as an oncogene as is suggested by some groups, yet in hormone-sensitive tumors a  $17\beta$ -estradiol-CTCF regulatory axis could be reducing the activity of *ERRLR1*. In support of this, at least 3 ER $\alpha$  binding sites were identified on the 3' end of the *ERRLR1* transcript. Whether these sites are functional or serve as co-activator versus co-repressor binding sites is unclear. Further *in silico* analysis indicated that the family of GATA transcription factors (including GATA3) also bound to the exonic regions of *ERRLR1* (Fig. 3b). Further work is required to determine the functionality of these sites.



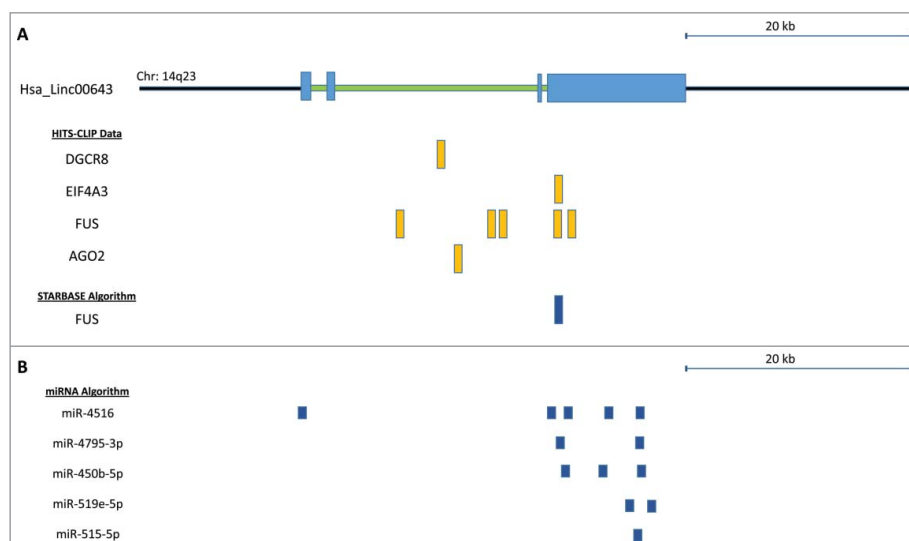
**Figure 3.** Genomic analysis of the *ERRLR01* gene region and the regulatory factors that interact with *ERRLR01* using the UCSC Genome browser. Transcription orientation is depicted from right (5' end) to left (3' end). (A) *ERRLR01.1* is a 4-exon gene conserved between mouse and human, and is expressed at high levels in testis, placenta, and brain tissue. (B, Top Panel) Detectable transcription is present across a panel of cell lines with evidence of H3K4Me1 modification. (B, Bottom Panel) Potential estrogen-regulated transcription factor binding locations are denoted, such as the GATA family of transcription factors, CTCF, and ER $\alpha$  itself.

### Potential RNA- and miRNA-binding sites within the *ERRLR01* locus

To further understand the potential RNA-regulatory network that *ERRLR01* is a part of, we used several databases to interrogate whether certain RNA-binding proteins interacted with *ERRLR01*, or whether specific miRNAs could bind the *ERRLR01* transcript. The strongest RNA binding protein interaction we identified with was FUS (Fig. 4). FUS binding to *ERRLR01* was confirmed through the StarBase 2.0 algorithm<sup>45</sup> and is denoted as a HHF3\_128133 binding site (Fig. 4a). Other RNA binding protein sites were

identified through HITS-CLIP data; however, most these sites require confirmation through RNA-IP experiments to verify these interactions. It was interesting to note that DGCR8 bound to intronic regions of *ERRLR01* indicating that a miRNA sequence may be derived from this host sequence.

Next we asked whether there were any regulatory interactions between miRNAs and the *ERRLR01* transcript. Using the miRdB algorithm<sup>46</sup> we observed several putative miRNA interactions across the *ERRLR01* transcript, and the top 5 miRNA candidates are being depicted (Fig. 4b). Many of these miRNAs have unknown functions, however miR-515-5p is a



**Figure 4.** (A) *In silico* assessment of RNA binding proteins that interact with *ERRLR01* as determined by HITS-CLIP experiments. StarBase 2.0 was used to confirm FUS binding to the *ERRLR01* locus. To focus on the 3' UTR-miRNA binding sites the *ERRLR01* transcript is depicted from right (3' end) to left (5' end), and only includes the 3' UTR through Exon 2. Orientation is depicted in this manner since *ERRLR01* is transcribed in the anti-sense orientation (derived from the minus strand of the DNA). The *ERRLR01* transcript is depicted in the 3' to 5' orientation, as it is transcribed in the anti-sense orientation (minus strand of the DNA).

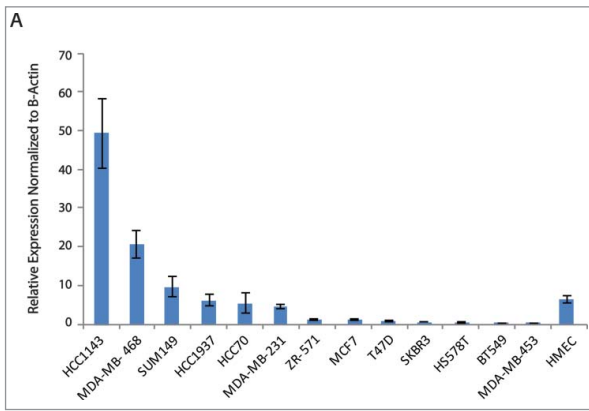
well-studied oncogene in breast cancer,<sup>47–50</sup> and is involved in mediating or regulating EMT.<sup>51–53</sup> miR-515 is also an estrogen regulated gene,<sup>48</sup> where ER $\alpha$  binds to the promoter of miR-515 and regulates gene expression in a 17 $\beta$ -estradiol-dependent manner.

Overall these bioinformatic analyses indicated that *ERRLR01* was a highly regulated lncRNA predictive of overall survival in breast cancer patients, and could be regulated by 17 $\beta$ -estradiol signaling in breast cancer. To test this notion, we screened for *ERRLR01* expression across several breast cancer cell lines. We confirmed that several TNBC cell lines harbored high expression of *ERRLR01* as compared with ER $\alpha$ <sup>+</sup> cell lines, and normal HMECs (Fig. 5). The high expression of *ERRLR01* in TNBC cell lines indicated that *ERRLR01* may be repressed by 17 $\beta$ -estradiol signaling. However, this analysis was done under steady-state growth conditions whereby 17 $\beta$ -estradiol was present in the growth media. However, a recent study by Lin et al.,<sup>54</sup> indicated that in MCF-7 cells, *ERRLR01* levels are low under hormone-depleted conditions yet upon 17 $\beta$ -estradiol addition *ERRLR01* levels increase within 3 h (Figure S3). The consequences of this rise in *ERRLR01* levels requires elucidation, as expression of numerous transcription factors and RNA binding proteins may also be modulated by this change in *ERRLR01* levels. It would be interesting to determine in future studies whether

direct modulation of *ERRLR01* induces functional and/or phenotypic effects in breast cancer cells.

#### Gene regulatory network analysis associated with *ERRLR01* expression

Given the evidence for *ERRLR01* to be an estrogen-regulated gene in breast cancer, we wanted to identify signaling pathways that may be part of an *ERRLR01*-mediated RNA network. To do this we used GO term analysis using the WebGestalt algorithm.<sup>55</sup> We extracted the gene expression profiles from all patients within the Affymetrix dataset and performed Spearman-Rank analysis to determine which genes were most correlated with *ERRLR01* expression (Fig. 6). We used as a cut-off the 200 most positively correlated *ERRLR01* genes, which is approximately the top 1% genes derived from the analysis. We then performed a series of GO term and KEGG analysis using WebGestalt against the entire human reference genome, and found significantly enriched *ERRLR01* pathways (Fig. 6a). We identified pathways such as Wnt Receptor Signaling ( $p$  value  $< 7.70 \times 10^{-2}$ ), Epithelial Differentiation ( $p$  value  $< 7.7 \times 10^{-2}$ ), and Epithelial Development ( $p$  value  $< 7.70 \times 10^{-2}$ ). Importantly, pathways such as Epithelial Development and Hormone Signaling were recurring pathways associated



**Figure 5.** Quantitative PCR analysis of *ERRLR01* expression across a panel of breast cancer cell lines. Analysis indicates a few TNBC cell lines express high levels of *ERRLR01*, as compared with normal HMEC lines, as well as ER $\alpha$ + cell lines.

with *ERRLR01*-correlated genes. Therefore, we conclude that *ERRLR01* is a lncRNA tightly regulated and serves to control proper developmental timing of mammary gland differentiation and development.

Similar analysis was performed on the 200 most inversely correlated *ERRLR01*-associated genes (Fig. 6b). Pathways such as Small Molecule Metabolic Processes ( $p$  value  $< 8.80 \times 10^{-3}$ ), Cellular Lipid Metabolic Processes ( $p$  value  $< 8.80 \times 10^{-3}$ ), and Reproductive System Development ( $p$  value  $< 3.12 \times 10^{-2}$ ) were identified. Similar analysis was performed on the TCGA dataset (see Figures S4-S5).

## Discussion

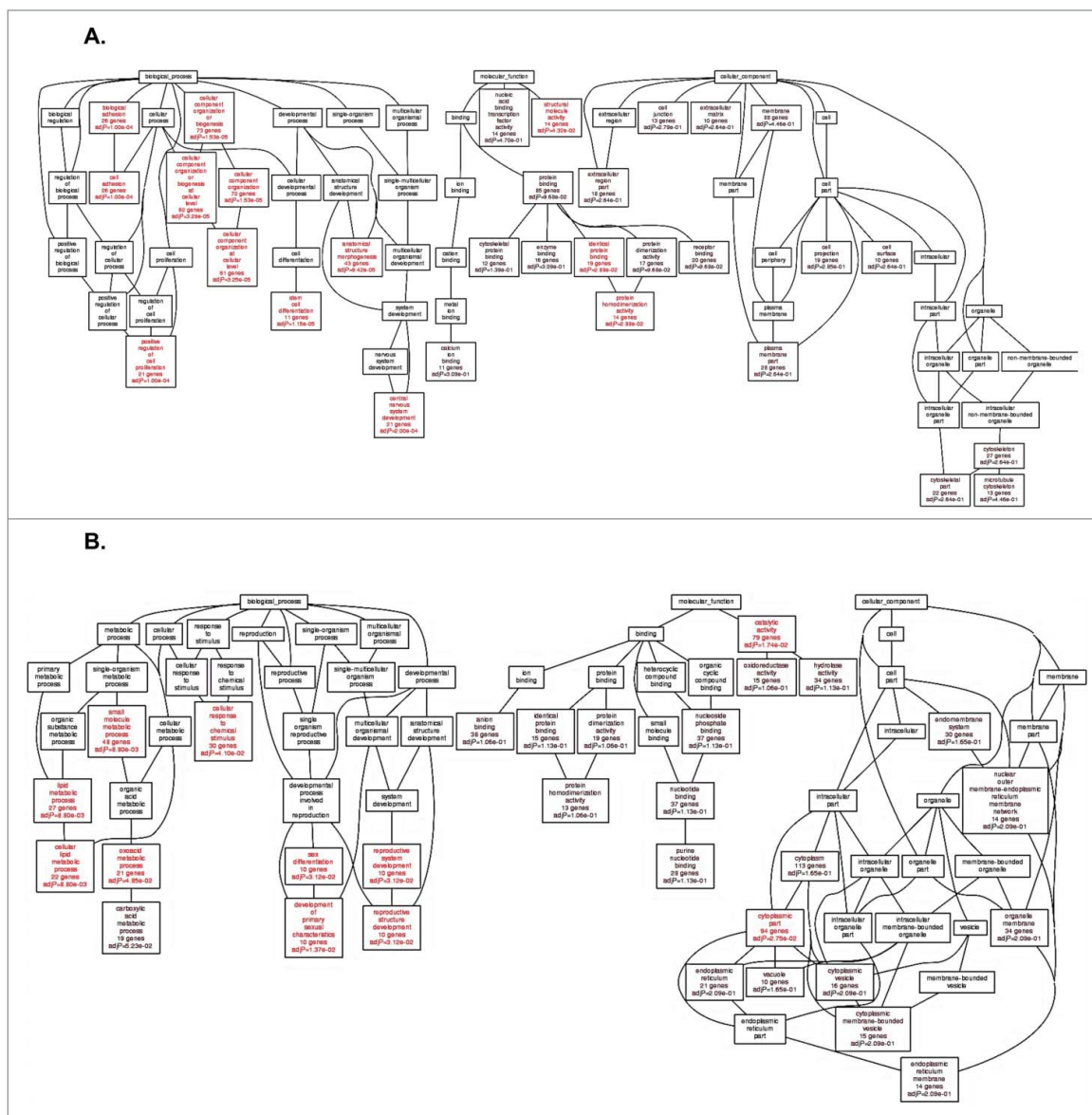
*ERRLR01* is located on chr17:70,396,217–70,590,488, and was first identified by Schmidt *et al.*, where *ERRLR01* transcriptionally upregulated MMP9 in melanoma cell lines.<sup>25</sup> In this study, *ERRLR01* was compared across 150 clinical samples from TCGA and was found to be elevated in tumor samples as compared to normal. Furthermore, patient samples that expressed *ERRLR01*  $\geq 14.1$  RPKM had a worse OS outcome than patients with  $\leq 14.1$  RPKM. This indicated that *ERRLR01* operated as an oncogene in melanoma. *ERRLR01* was described as an oncogene in other cancer systems as well, including lung and pancreatic cancer.<sup>24,56</sup> In lung cancer *ERRLR01* expression associated with higher TMN stages as well as lymph node metastasis. *ERRLR01* also functioned as a pro-metastatic factor in melanoma, since siRNA knockdown studies showed that loss of *ERRLR01* resulted in reduced invasion as measured

by Boyden-Chamber Matrigel assays.<sup>25</sup> In pancreatic cancer, the direct evidence for *ERRLR01* as an oncogene is less well determined, as a particular pancreatic cancer risk variant was identified within the *ERRLR01* transcript that generated a miR-1231 binding site, which presumably supports oncogenesis. More specifically, *ERRLR01* modulated PTPN11 degradation by promoting E3 ligase induced ubiquitination of PTPN11 and diminished extracellular signal-related kinase (ERK) oncogenic signaling. Therefore, in pancreatic cancer the presumption is that *ERRLR01* operates as a tumor suppressor by dampening the pro-proliferative mitogen-activated protein kinase (MAPK)/ERK signaling pathway.

*ERRLR01* could also be a therapeutic target given knockdown of *ERRLR01* in lung cancer cell lines and in mouse xenograft models resulted in reduced cell viability, and reduced cellular growth *in vivo*. *ERRLR01* does this by binding directly to LSD1 (*KDM1A*) and functions as a chaperone protein to recruit this histone demethylase to NCALD.<sup>24</sup> LSD1 is known to regulate cellular differentiation and cell cycle progression, while NCALD is a visinin-like protein 1 subfamily of EF-hand calcium-binding proteins that is downregulated in patients with poor prognosis tumors and those harboring poorly differentiated ovarian tumors.<sup>57</sup> Therefore, the mechanism of action is such that *ERRLR01* recruits LSD1 to epigenetically silence NCALD to promote tumorigenesis. The mechanism of action in melanoma is slightly different given *ERRLR01* serves as a scaffold to bring 2 protein components in proximity to each other, Brn3a and AR. The interaction with *ERRLR01* allows these protein heterodimers to bind to specific chromatin regions, within a site located in the promoter of MMP9<sup>25</sup>. The transcriptional upregulation of MMP9 imparted by *ERRLR01* promotes a metastatic phenotype in melanoma cell lines. Overall, these studies highlight the notion that *ERRLR01* mediates oncogenic or tumor suppressor functions dependent upon the cellular context, which is true for many non-coding RNAs.

While *ERRLR01* is described as a chaperone protein, our bioinformatics analysis identified *ERRLR01* as part of a gene-regulatory network involving miRNA sponging and interactions with specific RNA-binding proteins. This was an important analysis given the biologic significance of both small and long noncoding RNAs are becoming increasingly appreciated. We further identified several SNPs across the *ERRLR01*





**Figure 6.** Go Term analysis of the top 200 positively correlated *ERRLR1* genes via spearman rank analysis of the Affymetrix dataset (HG133). (A) Analysis was performed in Basal-like breast tumors (n = 577), given *ERRLR1* expression is high/detectable within those samples. Analysis indicated *ERRLR1* levels correlated with “Central Nervous System Development,” “Stem Cell Differentiation,” “Protein Dimerization Activity,” and “Positive Regulation of Cell Proliferation.” (B) Go Term Analysis of the top 200 negatively correlated *ERRLR1* genes via spearman rank analysis. Red Boxes highlight significant pathways and Black Boxes are highlighted as non-significant pathways.

transcript, however it was unclear as to whether any of these polymorphisms were associated with disease risk and/or onset. We intend on pursuing this line of analysis given genome-wide association studies (GWAS) have identified cancer risk loci outside protein-coding regions, such as *PTCSC3* in papillary thyroid carcinoma, and *ANRIL* in type-2 diabetes.<sup>17,58,59</sup>

A major finding of this study was that 17β-estradiol regulated *ERRLR1* expression. A few studies have identified specific lncRNAs to be regulated by 17β-estradiol. For instance, *linc00160* expression can be

modulated by 17β-estradiol, however the mechanism of action is unclear.<sup>60</sup> Similarly, well-studied lncRNAs have been identified to be regulated by 17β-estradiol, including H19, HOTAIR, and MALAT-1<sup>61-63</sup> In these studies, it is unclear how these lncRNAs relate to survival in breast cancer patients, and furthermore, if these lncRNAs predict overall survival based on ERα-estratification. In this study, we provide strong evidence that *ERRLR1* is prognostic in breast cancer, that *ERRLR1*-related OS is dependent upon ERα status, and that *ERRLR1* itself is regulated by ERα signaling

and 17 $\beta$ -estradiol-associated coregulatory proteins in breast cancer. Overall, the continued efforts to understand this epigenetic regulation mediated by lncRNAs in the context of cancer development will aid in the generation of more effective therapeutics to treat the disease.<sup>64</sup>

### Disclosure of potential conflicts of interest

B.D.A holds patent interests with, and consults with AUM LifeTech. B.D.A is also the President of The Brain Institute of America, LLC. The other authors have no conflicts of interest to disclose.

### Acknowledgments

We would like to thank our many colleagues for the review of this manuscript. We also thank Kim DeWeerd at the Molecular Core and Tissue Core for providing the equipment necessary to perform these experiments.

### Funding

We thank the State of New York and The Research Foundation for startup funds to B.D.A for making this manuscript possible. B.G. was supported by the OTKA 108655 grant.

### Contributions

**Manuscript Writing** – Ubaidat Abdul-Rahman, Balázs Gyórfy, and Brian D. Adams.

**TGCA and Affymetrix Bioinformatic Analysis** – Balázs Gyórfy.

**KEGG and Pathway Analysis** – Brian D. Adams.

**Concept and Design** - Brian D. Adams.

**Experimental Design** - Ubaidat Abdul-Rahman and Brian D. Adams.

### ORCID

Balázs Gyórfy  <http://orcid.org/0000-0002-5772-3766>

Brian D. Adams  <http://orcid.org/0000-0001-8372-2970>

### References

- [1] Rinn JL, Chang HY. Genome regulation by long non-coding RNAs. *Annu Rev Biochem* 2012; 81:145-66; PMID:22663078; <https://doi.org/10.1146/annurev-biochem-051410-092902>
- [2] Rinn JL. LncRNAs: Linking RNA to chromatin. *Cold Spring Harb Perspect Biol* 2014; 6:a018614; PMID:25085913; <https://doi.org/10.1101/cshperspect.a018614>
- [3] Huarte M. The emerging role of lncRNAs in cancer. *Nat Med* 2015; 21:1253-61; PMID:26540387; <https://doi.org/10.1038/nm.3981>
- [4] Goff LA, Rinn JL. Linking RNA biology to lncRNAs. *Genome Res* 2015; 25:1456-65; PMID:26430155; <https://doi.org/10.1101/gr.191122.115>
- [5] Morris KV. Long antisense non-coding RNAs function to direct epigenetic complexes that regulate transcription in human cells. *Epigenetics* 2009; 4:296-301; <https://doi.org/10.4161/epi.4.5.9282>
- [6] Villegas VE, Zaphiropoulos PG. Neighboring gene regulation by antisense long Non-Coding RNAs. *Int J Mol Sci* 2015; 16:3251-66; PMID:25654223; <https://doi.org/10.3390/ijms16023251>
- [7] Morris KV, Vogt PK. Long antisense non-coding RNAs and their role in transcription and oncogenesis. *Cell Cycle* 2010; 9:2544-7; PMID:20581457; <https://doi.org/10.4161/cc.9.13.12145>
- [8] Elnitski LL, Shah P, Moreland RT, Umayam L, Wolfsberg TG, Baxevas AD. The ENCODEdb portal: Simplified access to ENCODE Consortium data. *Genome Res* 2007; 17:954-9; PMID:17568011; <https://doi.org/10.1101/gr.5582207>
- [9] ENCODE Project Consortium, T. E. P. The ENCODE (ENCyclopedia Of DNA Elements) Project. *Science* 2004; 306:636-40; PMID:15499007; <https://doi.org/10.1126/science.1105136>
- [10] Werner A. Biological functions of natural antisense transcripts. *BMC Biol* 2013; 11:31; PMID:23577602; <https://doi.org/10.1186/1741-7007-11-31>
- [11] Werner A. Natural antisense transcripts. *RNA Biol* 2005; 2:53-62; PMID:17132938; <https://doi.org/10.4161/rna.2.2.1852>
- [12] Tang SS, Zheng BY, Xiong XD. LincRNA-p21: Implications in human diseases. *Int J Mol Sci* 2015; 16:18732-40; PMID:26270659; <https://doi.org/10.3390/ijms160818732>
- [13] Dimitrova N, Zamudio JR, Jong RM, Soukup D, Resnick R, Sarma K, Ward AJ, Raj A, Lee JT, Sharp PA, et al. LincRNA-p21 activates p21 in cis to promote polycomb target gene expression and to enforce the G1/S checkpoint. *Mol Cell* 2014; 54:777-90; PMID:24857549; <https://doi.org/10.1016/j.molcel.2014.04.025>
- [14] Pasmant E, Sabbagh A, Vidaud M, Bièche I. ANRIL, a long, noncoding RNA, is an unexpected major hotspot in GWAS. *FASEB J* 2011; 25:444-8; PMID:20956613; <https://doi.org/10.1096/fj.10-172452>
- [15] Quinn JJ, Chang HY. Unique features of long non-coding RNA biogenesis and function. *Nat Rev Genet* 2016; 17:47-62; PMID:26666209; <https://doi.org/10.1038/nrg.2015.10>
- [16] Prensner JR, Chinnaiyan AM. The emergence of lncRNAs in cancer biology. *Cancer Discovery* 2011; 1:391-407; PMID:22096659; <https://doi.org/10.1158/2159-8290.CD-11-0209>
- [17] Cheetham SW, Gruhl F, Mattick JS, Dinger ME. Long noncoding RNAs and the genetics of cancer. *Br J Cancer* 2013; 108:2419-25; PMID:23660942; <https://doi.org/10.1038/bjc.2013.233>
- [18] Jendrzejewski J, He H, Radomska HS, Li W, Tomsic J, Liyanarachchi S, Davuluri RV, Nagy R, de la Chapelle A. The polymorphism rs944289 predisposes to papillary

- thyroid carcinoma through a large intergenic noncoding RNA gene of tumor suppressor type. *Proc Natl Acad Sci U S A* 2012; 109:8646-51; PMID:22586128; <https://doi.org/10.1073/pnas.1205654109>
- [19] Gutschner T, Hämmerle M, Eissmann M, Hsu J, Kim Y, Hung G, Revenko A, Arun G, Stenstrup M, Gross M, et al. The noncoding RNA MALAT1 is a critical regulator of the metastasis phenotype of lung cancer cells. *Cancer Res* 2013; 73:1180-9; PMID:23243023; <https://doi.org/10.1158/0008-5472.CAN-12-2850>
- [20] Zhu L, Liu J, MA S, Zhang S. Long Noncoding RNA MALAT-1 Can Predict Metastasis and a Poor Prognosis: a Meta-Analysis. *Pathol Oncol Res* 2015; 21:1259-64; PMID:26159858; <https://doi.org/10.1007/s12253-015-9960-5>
- [21] Zhou Y, Xu X, Lv H, Wen Q, Li J, Tan L, Li J, Sheng X. The long noncoding RNA MALAT-1 is highly expressed in ovarian cancer and induces cell growth and migration. *PLoS One* 2016; 11:e0155250; PMID:27227769; <https://doi.org/10.1371/journal.pone.0155250>
- [22] Arun G, Diermeier S, Akerman M, Chang KC, Wilkinson JE, Hearn S, Kim Y, MacLeod AR, Krainer AR, Norton L, et al. Differentiation of mammary tumors and reduction in metastasis upon Malat1 lncRNA loss. *Genes Dev* 2016; 30:34-51; PMID:26701265; <https://doi.org/10.1101/gad.270959.115>
- [23] Hajjari M, Salavaty A. HOTAIR: an oncogenic long non-coding RNA in different cancers. *Cancer Biol Med* 2015; 12:1-9; PMID:25859406
- [24] Shi X, Ma C, Zhu Q, Yuan D, Sun M, Gu X, Wu G, Lv T, Song Y. Upregulation of long intergenic noncoding RNA 00673 promotes tumor proliferation via LSD1 interaction and repression of NCALD in non-small-cell lung cancer. *Oncotarget* 2016; 7:25558-75; PMID:27027352
- [25] Schmidt K, Joyce CE, Buquicchio F, Brown A, Ritz J, Distel RJ, Yoon CH, Novina CD. The lncRNA ERRLR011 Mediates Melanoma Invasion through a Conserved SRA1-like Region. *Cell Rep* 2016; 15:2025-37; PMID:27210747; <https://doi.org/10.1016/j.celrep.2016.04.018>
- [26] Mihály Z, Kormos M, Lániczky A, Dank M, Budczies J, Szász MA, Győrffy B. A meta-analysis of gene expression-based biomarkers predicting outcome after tamoxifen treatment in breast cancer. *Breast Cancer Res Treatment* 2013; 140:219-32; PMID:23836010; <https://doi.org/10.1007/s10549-013-2622-y>
- [27] Győrffy B, Benke Z, Lániczky A, Balázs B, Szállási Z, Timár J, Schäfer R. RecurrenceOnline: an online analysis tool to determine breast cancer recurrence and hormone receptor status using microarray data. *Breast Cancer Res Treat* 2012; 132:1025-34; PMID:21773767; <https://doi.org/10.1007/s10549-011-1676-y>
- [28] Li Q, Birkbak NJ, Győrffy B, Szallasi Z, Eklund AC. Jetset: selecting the optimal microarray probe set to represent a gene. *BMC Bioinformatics* 2011; 12:474; PMID:22172014; <https://doi.org/10.1186/1471-2105-12-474>
- [29] Győrffy B, Benke Z, Lániczky A, Balázs B, Szállási Z, Timár J, Schäfer R. RecurrenceOnline: An online analysis tool to determine breast cancer recurrence and hormone receptor status using microarray data. *Breast Cancer Res Treat* 2012; 132:1025-34; PMID:21773767; <https://doi.org/10.1007/s10549-011-1676-y>
- [30] Cancer T, Atlas G. Comprehensive molecular portraits of human breast tumours. *Nature* 2012; 490:61-70; PMID:23000897; <https://doi.org/10.1038/nature11412>
- [31] Adams BD, Wali VB, Cheng CJ, Inukai S, Booth CJ, Agarwal S, Rimm DL, Győrffy B, Santarpia L, Pusztai L, et al. MiR-34a silences c-SRC to attenuate tumor growth in triple-negative breast cancer. *Cancer Res* 2016; 76:927-39; PMID:26676753; <https://doi.org/10.1158/0008-5472.CAN-15-2321>
- [32] Iyer MK, Niknafs YS, Malik R, Singhal U, Sahu A, Hosono Y, Barrette TR, Prensner JR, Evans JR, Zhao S, et al. The landscape of long noncoding RNAs in the human transcriptome. *Nat Genet* 2015; 47:199-208; PMID:25599403; <https://doi.org/10.1038/ng.3192>
- [33] Cotterill S. Chromosome 14. *Cancer Genet* <http://www.cancerindex.org/geneweb/clinkc14.htm> 2015
- [34] Zhang X, Cowper-Sal-lari R, Bailey SD, Moore JH, Lupien M. Integrative functional genomics identifies an enhancer looping to the SOX9 gene disrupted by the 17q24.3 prostate cancer risk locus. *Genome Res* 2012; 22:1437-46; PMID:22665440; <https://doi.org/10.1101/gr.135665.111>
- [35] Pezzolo A, Coco S, Raso A, Parodi F, Pistorio A, Valdora F, Capra V, Zollo M, Aschero S, Basso E, et al. Loss of 10q26.1-q26.3 in association with 7q34-q36.3 gain or 17q24.3-q25.3 gain predict poor outcome in pediatric medulloblastoma. *Cancer Lett* 2011; 308:215-24; PMID:21652146; <https://doi.org/10.1016/j.canlet.2011.05.006>
- [36] Sun J, Purcell L, Gao Z, Isaacs SD, Wiley KE, Hsu FC, Liu W, Duggan D, Carpten JD, Grönberg H, et al. Association between sequence variants at 17q12 and 17q24.3 and prostate cancer risk in European and African Americans. *Prostate* 2008; 68:691-7; PMID:18361410; <https://doi.org/10.1002/pros.20754>
- [37] Solomon E, Borrow J, Goddard AD. Chromosome aberrations and cancer. *Science* 1991; 254:1153-60; PMID:1957167; <https://doi.org/10.1126/science.1957167>
- [38] Szász AM, Lániczky A, Nagy Á, Förster S, Hark K, Green JE, Boussioutas A, Busuttill R, Szabó A, Győrffy B. Cross-validation of survival associated biomarkers in gastric cancer using transcriptomic data of 1,065 patients. *Oncotarget* 2016; 7:49322-33; PMID:27384994
- [39] Győrffy B, Surowiak P, Budczies J, Lániczky A. Online survival analysis software to assess the prognostic value of biomarkers using transcriptomic data in non-small-cell lung cancer. *PLoS One* 2013; 8:e82241; PMID:24367507; <https://doi.org/10.1371/journal.pone.0082241>
- [40] Wang K, Singh D, Zeng Z, Coleman SJ, Huang Y, Savich GL, He X, Mieczkowski P, Grimm SA, Perou CM, et al.

- MapSplice: Accurate mapping of RNA-seq reads for splice junction discovery. *Nucleic Acids Res* 2010; 38:e178; PMID:20802226; <https://doi.org/10.1093/nar/gkq622>
- [41] Phillips JE, Corces VG. CTCF: Master weaver of the genome. *Cell* 2009; 137:1194-211; PMID:19563753; <https://doi.org/10.1016/j.cell.2009.06.001>
- [42] de Wit E, Vos ES, Holwerda SJ, Valdes-Quezada C, Verstegen MJ, Teunissen H, Splinter E, Wijchers PJ, Krijger PH, de Laat W. CTCF binding polarity determines chromatin looping. *Mol Cell* 2015; 60:676-84; PMID:26527277; <https://doi.org/10.1016/j.molcel.2015.09.023>
- [43] Ong C, Corces VG. CTCF: an architectural protein bridging genome topology and function. *Nat Publ Gr* 2014; 15:234-46
- [44] Ohlsson R, Bartkuhn M, Renkawitz R. CTCF shapes chromatin by multiple mechanisms: The impact of 20 years of CTCF research on understanding the workings of chromatin. *Chromosoma* 2010; 119:351-60; PMID:20174815; <https://doi.org/10.1007/s00412-010-0262-0>
- [45] Yang JH, Li JH, Shao P, Zhou H, Chen YQ, Qu LH. StarBase: A database for exploring microRNA-mRNA interaction maps from Argonaute CLIP-Seq and Degradome-Seq data. *Nucleic Acids Res* 2011; 39:D202-9; PMID:21037263; <https://doi.org/10.1093/nar/gkq1056>
- [46] Wong N, Wang X. miRDB: An online resource for microRNA target prediction and functional annotations. *Nucleic Acids Res* 2015; 43:D146-52; PMID:25378301; <https://doi.org/10.1093/nar/gku1104>
- [47] Mattiske S, Suetani RJ, Neilsen PM, Callen DF. The oncogenic role of miR-155 in breast cancer. *Cancer Epidemiol Biomarkers Prevention* 2012; 21:1236-43; <https://doi.org/10.1158/1055-9965.EPI-12-0173>
- [48] Pinho FG, Frampton AE, Nunes J, Krell J, Alshaker H, Jacob J, Pellegrino L, Roca-Alonso L, de Giorgio A, Harding V, et al. Downregulation of microRNA-515-5p by the estrogen receptor modulates Sphingosine kinase 1 and breast cancer cell proliferation. *Cancer Res* 2013; 73:5936-48; PMID:23928990; <https://doi.org/10.1158/0008-5472.CAN-13-0158>
- [49] Pardo OE, Castellano L, Munro CE, Hu Y, Mauri F, Krell J, Lara R, Pinho FG, Choudhury T, Frampton AE, et al. miR-515-5p controls cancer cell migration through MARK4 regulation. *EMBO Rep* 2016; 17:570-84; PMID:26882547; <https://doi.org/10.15252/embr.201540970>
- [50] Gilam A, Edry L, Mamluk-Morag E, Bar-Ilan D, Avivi C, Golan D, Laitman Y, Barshack I, Friedman E, Shomron N. Involvement of IGF-1R regulation by miR-515-5p modifies breast cancer risk among BRCA1 carriers. *Breast Cancer Res Treat* 2013; 138:753-60; PMID:23549953; <https://doi.org/10.1007/s10549-013-2502-5>
- [51] De Craene B, Berx G. Regulatory networks defining EMT during cancer initiation and progression. *Nat Rev Cancer* 2013; 13:97-110; PMID:23344542; <https://doi.org/10.1038/nrc3447>
- [52] Abdelmohsen K, Srikantan S, Kuwano Y, Gorospe M. miR-519 reduces cell proliferation by lowering RNA-binding protein HuR levels. *Proc Natl Acad Sci U S A* 2008; 105:20297-302; PMID:19088191; <https://doi.org/10.1073/pnas.0809376106>
- [53] Abdelmohsen K, Kim MM, Srikantan S, Mercken EM, Brennan SE, Wilson GM, Cabo Rd, Gorospe M. miR-519 suppresses tumor growth by reducing HuR levels. *Cell Cycle* 2010; 9:1354-9; PMID:20305372; <https://doi.org/10.4161/cc.9.7.11164>
- [54] Lin Z, Reierstad S, Huang CC, Bulun SE. Novel estrogen receptor- $\alpha$  binding sites and estradiol target genes identified by chromatin immunoprecipitation cloning in breast cancer. *Cancer Res* 2007; 67:5017-24; PMID:17510434; <https://doi.org/10.1158/0008-5472.CAN-06-3696>
- [55] Zhang B, Kirov S, Snoddy J. WebGestalt: An integrated system for exploring gene sets in various biological contexts. *Nucleic Acids Res* 2005; 33:W741-8; PMID:15980575; <https://doi.org/10.1093/nar/gki475>
- [56] Zheng J, Huang X, Tan W, Yu D, Du Z, Chang J, Wei L, Han Y, Wang C, Che X, et al. Pancreatic cancer risk variant in LINC00673 creates a miR-1231 binding site and interferes with PTPN11 degradation. *Nat Genet* 2016; 48:747-57; PMID:27213290; <https://doi.org/10.1038/ng.3568>
- [57] Nymark P, Guled M, Borze I, Faisal A, Lahti L, Salmenkivi K, Kettunen E, Anttila S, Knuutila S. Integrative analysis of microRNA, mRNA and aCGH data reveals asbestos- and histology-related changes in lung cancer. *Genes Chromosom Cancer* 2011; 50:585-97; PMID:21563230; <https://doi.org/10.1002/gcc.20880>
- [58] Pasmant E, Sabbagh A, Vidaud M, Bièche I. ANRIL, a long, noncoding RNA, is an unexpected major hotspot in GWAS. *FASEB J* 2011; 25:444-8; PMID:20956613; <https://doi.org/10.1096/fj.10-172452>
- [59] Jendrzewski J, He H, Radomska HS, Li W, Tomsic J, Liyanarachchi S, Davuluri RV, Nagy R, de la Chapelle A. The polymorphism rs944289 predisposes to papillary thyroid carcinoma through a large intergenic noncoding RNA gene of tumor suppressor type. *Proc Natl Acad Sci* 2012; 109:8646-51; PMID:22586128; <https://doi.org/10.1073/pnas.1205654109>
- [60] Jonsson P, Coarfa C, Mesmar F, Raz T, Rajapakshe K, Thompson JF, Gunaratne PH, Williams C. Single-molecule sequencing reveals estrogen-regulated clinically relevant lncRNAs in breast cancer. *Mol Endocrinol* 2015; 29:1634-45; PMID:26426411; <https://doi.org/10.1210/me.2015-1153>
- [61] Sun H, Wang G, Peng Y, Zeng Y, Zhu QN, Li TL, Cai JQ, Zhou HH, Zhu YS. H19 lncRNA mediates 17 $\beta$ -estradiol-induced cell proliferation in MCF-7 breast cancer cells. *Oncol Rep* 2015; 33:3045-52; PMID:25846769
- [62] Zhao Z, Chen C, Liu Y, Wu C. 17 $\beta$ -Estradiol treatment inhibits breast cell proliferation, migration and invasion by decreasing MALAT-1 RNA level. *Biochem Biophys*

- Res Commun 2014; 445:388-93; PMID:24525122; <https://doi.org/10.1016/j.bbrc.2014.02.006>
- [63] Bhan A, Mandal SS. Estradiol-Induced Transcriptional Regulation of Long Non-Coding RNA, HOTAIR. *Methods Mol Biol* 2016; 1366:395-412; PMID:26585152
- [64] McHugh CA, Chen CK, Chow A, Surka CF, Tran C, McDonel P, Pandya-Jones A, Blanco M, Burghard C, Moradian A, et al. The Xist lncRNA interacts directly with SHARP to silence transcription through HDAC3. *Nature* 2015; 521:232-6; PMID:25915022; <https://doi.org/10.1038/nature14443>