

RESEARCH ARTICLE

Functional imaging of the interaction between gut microbiota and the human host: A proof-of-concept clinical study evaluating novel use for 18F-FDG PET-CT

Ben Boursi^{1,2,3,4,5*}, Thomas J. Werner⁶, Saeid Gholami⁶, Sina Houshmand⁶, Ronac Mamtani^{2,3}, James D. Lewis^{1,2}, Gary D. Wu¹, Abass Alavi⁶, Yu-Xiao Yang^{1,2}

1 Division of Gastroenterology, Department of Medicine, Perelman School of Medicine at the University of Pennsylvania, Philadelphia, Pennsylvania, United States of America, **2** Center for Clinical Epidemiology and Biostatistics, Perelman School of Medicine at the University of Pennsylvania, Philadelphia, Pennsylvania, United States of America, **3** Abramson Cancer Center, University of Pennsylvania, Philadelphia, Pennsylvania, United States of America, **4** Tel-Aviv University, Tel-Aviv, Israel, **5** Department of Oncology, Sheba Medical Center, Tel Hashomer, Ramat-Gan, Israel, **6** Department of Nuclear Medicine, Perelman School of Medicine at the University of Pennsylvania, Philadelphia, Pennsylvania, United States of America

☯ These authors contributed equally to this work.

* ben.boursi@sheba.health.gov.il



OPEN ACCESS

Citation: Boursi B, Werner TJ, Gholami S, Houshmand S, Mamtani R, Lewis JD, et al. (2018) Functional imaging of the interaction between gut microbiota and the human host: A proof-of-concept clinical study evaluating novel use for 18F-FDG PET-CT. PLoS ONE 13(2): e0192747. <https://doi.org/10.1371/journal.pone.0192747>

Editor: François Blachier, National Institute for Agronomic Research, FRANCE

Received: September 13, 2017

Accepted: January 30, 2018

Published: February 15, 2018

Copyright: © 2018 Boursi et al. This is an open access article distributed under the terms of the [Creative Commons Attribution License](https://creativecommons.org/licenses/by/4.0/), which permits unrestricted use, distribution, and reproduction in any medium, provided the original author and source are credited.

Data Availability Statement: All relevant data are within the paper.

Funding: The author(s) received no specific funding for this work.

Competing interests: The authors have declared that no competing interests exist.

Abstract

Recent data comparing germ-free to conventionally-raised mice demonstrated that energy homeostasis of colonocytes is dependent on gut microbiota through regulation of short chain fatty acids (SCFA) production and glucose utilization. We sought to evaluate 18F-FDG PET-CT as a novel technique for functional imaging of alterations in glucose metabolism as a result of the interaction between the gut microbiota and the human host. We conducted a prospective study in healthy humans that underwent 18F-FDG PET-CT and sampling of the gut microbiota before and after orally administered broad-spectrum antibiotics. The primary outcomes were total and regional physiologic colonic 18F-FDG uptake (measured as the mean and max standardized uptake values [SUVmean and SUVmax]). The study demonstrated significant increases in physiologic colonic 18F-FDG uptake in all study participants following antibiotic treatment and a 4–5log reduction of gut bacterial load. The mean increase in SUVmax was 0.63±0.37 SD ($p = 0.004$) and the median increase was 0.42 with an IQR of 0.40–0.81. The mean increase in SUVmean was 0.31±0.24 SD ($p = 0.01$) and the median increase was 0.41 with an IQR of 0.06–0.55. A likely explanation for this phenomenon is a shift in colonocyte metabolism to glycolysis due to a shortage of SCFA.

Introduction

The gut microbiota is regarded by many as a distinct organ within the human body with a central role in metabolism, immunity, and inflammation [1]. Conditions such as obesity [2–3]

and diabetes [4–5], auto-immune and allergic diseases [6–9], inflammatory bowel disease [10] and cancer [11–15] have been previously associated with alterations in the composition of the gut microbiota, referred to as dysbiosis. While recent advances in high throughput sequencing techniques together with the development of computational tools have enabled investigators to determine the composition of complex microbiota communities with unprecedented precision, to date there are no clinical tools to directly demonstrate the interaction between the gut microbiota as a whole and the human host. The gut microbiota is required for energy homeostasis in colonocytes, and short chain fatty acids (SCFA), produced by the gut microbiota mainly from the fermentation of undigestible carbohydrates, serve as the main nutrient for colonocytes [16–18]. Previous *in vitro* and *in vivo* studies [18] demonstrated a shift in colonic metabolism from SCFA to glycolysis in germ-free compared to conventionally-raised mice. We recently demonstrated, both in mice and humans, that the use of a combined protocol of two antibiotics (vancomycin and neomycin taken for 3 consecutive days) and Polyethylene glycol (PEG) on the second day reduces both culturable bacteria and 16S gene copy number by approximately 4–5 logs, creating a gut microbial environment that more closely mimics a germ-free mouse [19].

The uptake of 18F-FDG by tissues is a marker for the tissue uptake of glucose, which in turn is closely correlated with certain types of tissue metabolism. After 18F-FDG is injected into a patient, a PET scanner can form two-dimensional or three-dimensional images of the distribution of 18F-FDG within the body.

Positron emission tomography with 2-deoxy-2-[fluorine-18]fluoro- D-glucose integrated with computed tomography (18F-FDG PET-CT) uses a radioactive fluorodeoxyglucose (FDG) as a marker for the tissue uptake of glucose in order to trace glucose metabolism. The PET scanner form images of 18F-FDG distribution within the body. The biological principle behind 18F-FDG PET means that it can potentially be used as a novel method for functional imaging of the host-microbiota interaction by capturing the change in tissue metabolism following changes in gut microbiota load and composition.

The aim of the current study was to determine whether physiologic colonic 18F-FDG uptake can serve as a functional imaging tool capable of capturing the colonic metabolic shift occurring in the human host following reduction in gut bacterial load (required for the production of SCFA). This aim was investigated using a prospective clinical trial which compared the colonic 18F-FDG uptake in healthy humans before and after significantly reducing gut microbiota bacterial load via the administration of broad-spectrum antibiotics and a PEG purge. This clinical trial was embedded within a parent study (the FARMM study) which investigated the effect of diet and antibiotics on human gut microbiome and metabolomes [19].

Materials and methods

Study design

We conducted a sub-study embedded within a parent study, the FARMM study [19]. FARMM is a randomized controlled feeding experiment examining the effect of diet and antibiotics on the composition of stool microbiome and fecal and plasma metabolome of 30 healthy volunteers age 18–60 years who were sequestered at the Clinical and Translational Research Center at the University of Pennsylvania for the duration of the study. Individuals with inflammatory bowel disease (IBD), celiac disease, irritable bowel syndrome (IBS) and those who took antibiotics in the 6 months prior to study initiation were excluded. As part of the FARMM protocol subjects provided fecal samples and underwent sigmoidoscopy with rectal mucosal biopsy prior to initiating a controlled diet. All participants were followed for 15 days. All participants

were treated with broad-spectrum antibiotics daily for 3 days (days 6–8) (i.e., vancomycin 500mg orally every 6 hours and neomycin 1000mg orally every 6 hours). Of note, these antibiotics are largely non absorbable from the gastrointestinal tract and have no known effect on the colonic epithelium [20,21]. On day 7, the participants also consumed 4L of polyethylene glycol (PEG) based bowel purgative (GoLyteLy®). Stool samples were collected daily. Rectal biopsies were obtained at days 5, 9, and 15 (Fig 1). The current study included 7 of the 30 participants in the FARM study who consented to undergoing PET-CT before and after the antibiotic treatment. In a previous publication from the FARM study we demonstrated a 4–5-log reduction in bacterial load following antibiotic administration using 16S rRNA gene copy PCR [19]. The study was approved by the Institutional Review Board at the University of Pennsylvania.

18F-FDG PET-CT imaging

PET scans were performed on days 4 and 8 of follow-up and at the same time of the day. Subjects were fasting for 4 hours prior to FDG injection. Blood glucose levels were measured before the administration of FDG and did not exceed 200 mg/dL at the time of injection. PET imaging scans of the abdomen and pelvis were performed 60 minutes after injection of 5 mCi 18F-FDG. CT images were acquired using a low-dose technique (120kV peak and 30–50 mAs) for attenuation correction of PET images. All images were performed using the same scanner (Philips, Ingenuity TF PET-CT). **18F-FDG PET-CT image analysis:** Image data was analyzed using a dedicated image visualization and analysis software (OsiriX MD 64bit version). In each person, Regions of interest (ROIs) were drawn manually on each transaxial slice around the outer boundaries of the four colonic regions (cecum and ascending, transverse, descending, and rectosigmoid) (Fig 2). In addition, we defined ROI for abdominal subcutaneous tissue in three transaxial slides below the lower pole of the right kidney for adjustment purposes as a reference tissue. The drawings were done according to anatomic definitions using CT images. In case of overlap between areas of colon and small bowel, the areas were excluded from the ROIs. Uptake was measured using standardized uptake value (SUV, the concentration of tracer measured by PET in the target tissue divided by the activity injected divided by body weight) in order to remove variability caused by the amount of 18F-FDG injected and differences in patient size. A single investigator (BB) read the scans and was blinded to both subject and timing of the image (before or after antibiotics).

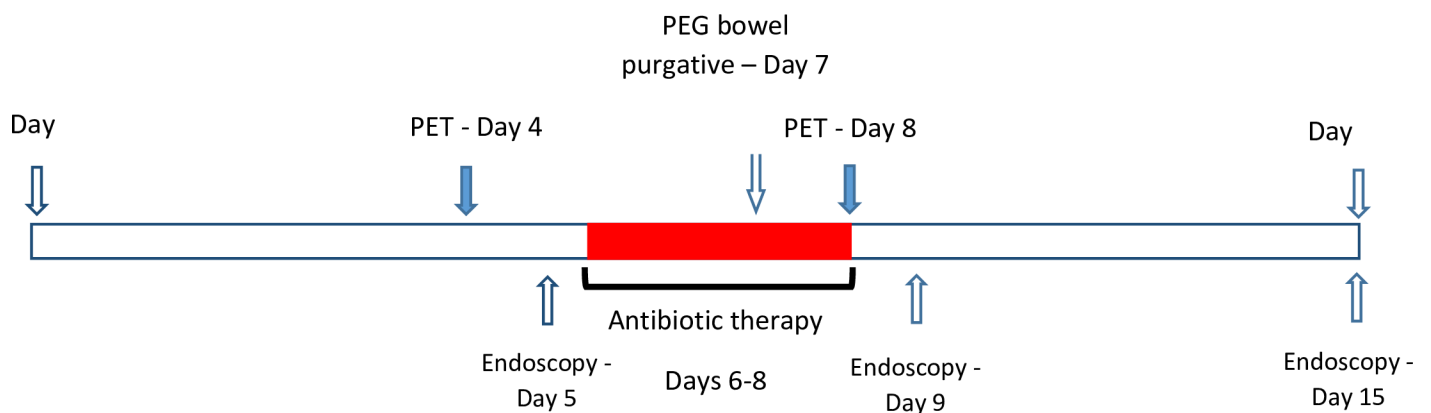


Fig 1. Timing of bacterial eradication, PET imaging and endoscopy.

<https://doi.org/10.1371/journal.pone.0192747.g001>

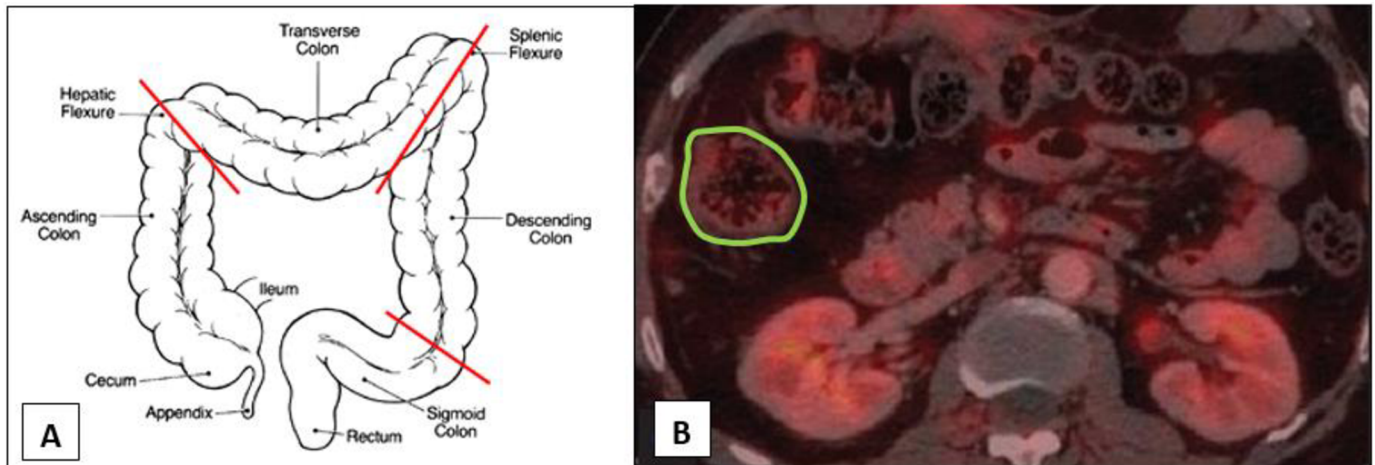


Fig 2. Definition of colonic regions and example of a typical region of interest (ROI). (A) Proximal colon defined from the cecum to the hepatic flexure. Transverse colon defined from the hepatic to the splenic flexure. Descending colon defined from the splenic flexure to the left iliac crest. Recto-sigma defined from the left iliac crest to the anus. (B) A typical region of interest (ROI) definition in the proximal colon.

<https://doi.org/10.1371/journal.pone.0192747.g002>

Primary outcome

The primary outcomes were average and maximum colonic ^{18}F -FDG uptake (SUVmean and SUVmax) measured within all ROIs of the relevant colonic region of each individual, both before and after antibiotic treatment.

Statistics

The primary analysis compared SUVmean and SUVmax, both in the entire colon and in specific colonic regions, before and after antibiotic treatment using paired t-test. The results were adjusted for abdominal subcutaneous FDG uptake using linear regression. All statistical analyses were performed using STATA 13 (STATA Corp. College Station, TX, USA).

Results

Among the 30 participants of the FARMM study 7 individuals took part in the prospective PET sub-study.

Table 1 presents colonic ^{18}F -FDG uptake among individuals in the prospective study before and after antibiotic therapy, both as total colonic SUVmax and total colonic SUVmean. Both values increased in all patients after antibiotic treatment. The change in uptake was the highest in the cecum and ascending colon (**Table 1**). The mean increase in SUVmax was 0.63 ± 0.37 SD ($p = 0.004$) and the median increase was 0.42 with an IQR of 0.40–0.81. The mean increase in SUVmean was 0.31 ± 0.24 SD ($p = 0.01$) and the median increase was 0.41 with an IQR of 0.06–0.55. The absolute change in SUVmax was the largest in individuals with the lowest SUVmax before antibiotic administration. **Table 2** demonstrated the increase in total colonic and regional SUVmax and SUVmean following antibiotic therapy. **Fig 3** presents PET images of ^{18}F -FDG uptake in different colonic regions before and after antibiotic therapy in the first individual that was enrolled.

Discussion

We demonstrated an increase in physiologic colonic ^{18}F -FDG uptake in all study participants following antibiotic treatment that results in a 4–5log reduction in gut bacteria load. Using

Table 1. Physiologic colonic 18F-FDG uptake among individuals before and after antibiotic therapy.

	Before Abx.			After Abx.			Delta SUVmax (SUVmax before Abx. -SUVmax after Abx.)
	Cecum and ascending colon SUVmean	Total SUVmax	Total SUVmean	Cecum and ascending colon SUVmean	Total SUVmax	Total SUVmean	
Subject 1	0.518	0.976	0.591	1.036	1.779	1.140	0.803
Subject 2	0.656	1.529	0.679	1.120	2.845	1.088	1.316
Subject 3	0.958	1.834	0.922	1.457	2.250	0.956	0.416
Subject 4	1.929	1.809	1.204	1.794	2.220	1.278	0.411
Subject 5	1.130	1.735	1.046	1.616	2.009	1.105	0.274
Subject 6	0.996	1.466	0.832	1.990	2.271	1.387	0.805
Subject 7	0.992	2.084	1.063	2.351	2.486	1.551	0.402

<https://doi.org/10.1371/journal.pone.0192747.t001>

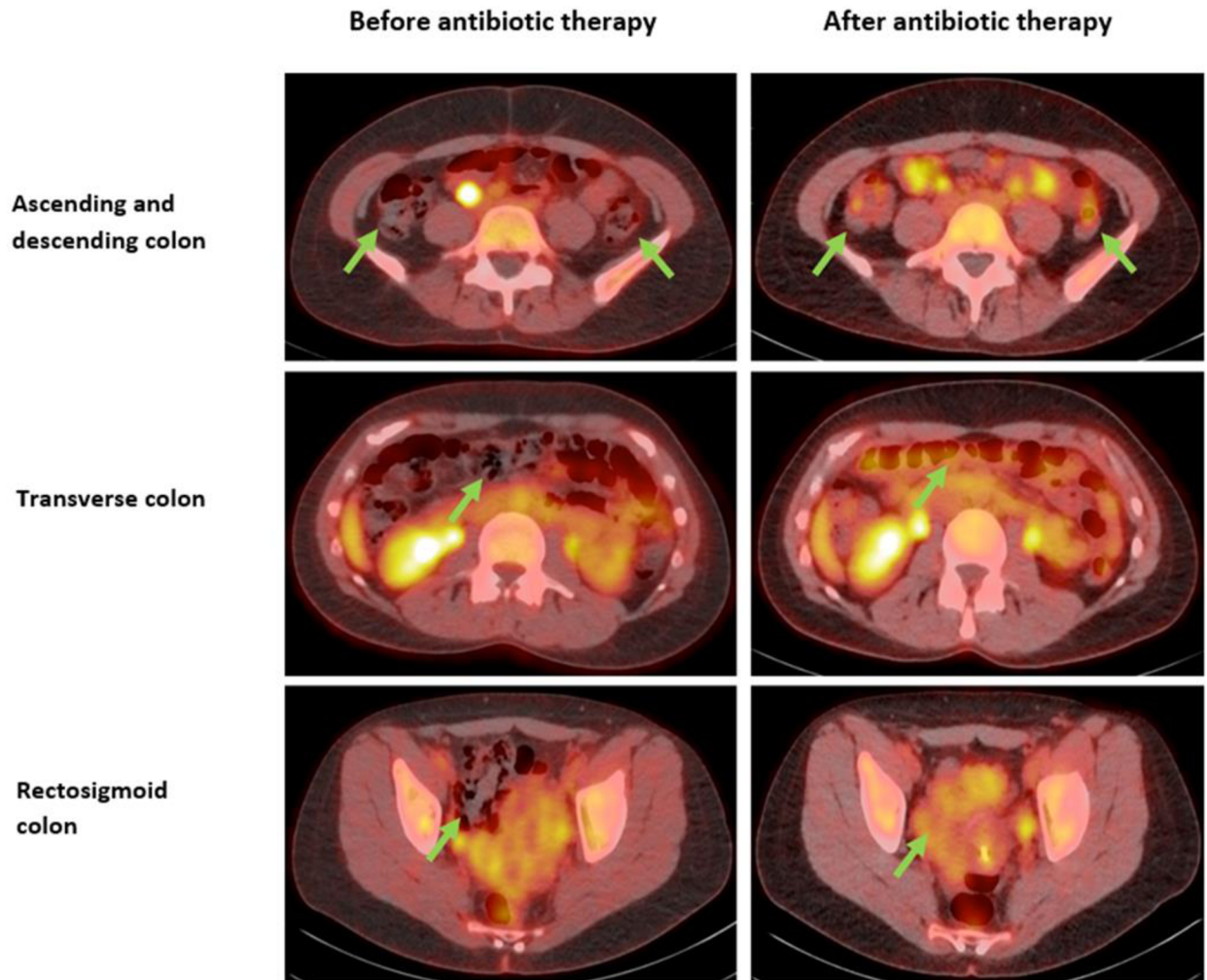
18F-FDG PET scans, we visually demonstrated for the first time in healthy human subjects a change in colonic glucose metabolism resulting from a decrease in bacterial load following treatment with broad spectrum antibiotics. These results are supported by both *in vitro* and *in vivo* data showing a shift in colonic metabolism in germ-free mice from SCFA (mainly butyrate), normally produced by the gut microbiota, to glycolysis.

Of note, the degree of change in physiologic colonic 18F-FDG uptake was inversely correlated to the initial uptake before antibiotic treatment (Fig 2). Thus, individuals with the lowest initial uptake, reflecting normal diverse microbiota that allows metabolism based on SCFA, had the highest increase in SUV following antibiotic treatment and resulting decrease in bacterial load and transition to glycolysis-based metabolism.

Table 2. Change in total colonic and regional SUVmean and SUVmax among individuals in the FARMM study before and after antibiotic therapy.

	Before Abx.	After Abx.	P-value
Entire colon			
SUVmean	0.99 (0.73–1.24)	1.22 (1.06–1.38)	0.03
SUVmax	1.75 (1.36–2.13)	2.25 (1.99–2.52)	0.01
Cecum and ascending colon			
SUVmean	1.13 (0.70–1.56)	1.57 (1.19–1.96)	0.04
SUVmax	1.94 (1.21–2.67)	3.03 (2.37–3.69)	0.01
Transverse colon			
SUVmean	0.86 (0.66–1.06)	0.99 (0.84–1.14)	0.14
SUVmax	1.57 (1.20–1.95)	1.78 (1.61–1.95)	0.14
Descending colon			
SUVmean	1.03 (0.78–1.27)	1.14 (1.01–1.27)	0.19
SUVmax	1.75 (1.36–2.14)	1.98 (1.68–2.28)	0.16
Rectosigmoid			
SUVmean	1.05 (0.79–1.31)	1.28 (1.03–1.52)	0.05
SUVmax	1.84 (1.37–2.31)	2.40 (1.76–3.05)	0.03

<https://doi.org/10.1371/journal.pone.0192747.t002>



*Green arrows mark the relevant colonic regions.

Fig 3. 18F-FDG PET uptake in different colonic regions before and after antibiotic therapy in the first individual enrolled to the study.

<https://doi.org/10.1371/journal.pone.0192747.g003>

The current results also suggest a possible explanation for a clinical observation, previously described in the literature, showing diffuse colonic 18F-FDG PET uptake in diabetic patients that are treated with metformin [22,23]. This uptake can be reduced if the medication is stopped 48 hours prior to PET imaging [24–26]. Metformin, an oral hypoglycemic medication, is known to activate the AMP-activated protein kinase (AMPK) pathway, a key regulator of cell metabolism, promoting glycolysis and generation of ATP while inhibiting anabolic pathways, thus increasing 18F-FDG avidity [27–29]. This change is prominent in the colon since it is a metabolically active tissue that under normal conditions utilizes SCFA as an energetic source. This alteration observed among metformin users is similar to the metabolic shift in gut metabolism from SCFA to glycolysis following reduction in colonic bacterial load. Of note, some of the therapeutic effects of metformin were recently shown to be mediated through change in the gut microbiota [23].

The study had the advantage of evaluating healthy subjects without recent antibiotic exposure that received a fixed diet under medical supervision for the study duration. All PET scans were performed during the same time of day and in the same scanner. All images were read by the same physician that was blinded to both patient and timing of the test in relation to antibiotic treatment. Since analysis was performed within individuals as a paired t-test, comparing uptake before and after antibiotics, there was minimal risk for additional confounding as an explanation for study results. Furthermore, in contrast to previous studies [30], we used antibiotics with intraluminal activity and no known anti-inflammatory activity reducing nonspecific uptake.

The current study had several limitations. Our study had a small sample size. However we were still able to detect a consistent increase in 18F-FDG uptake in all colonic regions (although not significant for transverse and descending colon) and correlate this increase with previously described biological pathways [18]. The normal gastrointestinal tract exhibits low physiologic 18F-FDG uptake [31]. Suggested sources for the uptake include mucosal metabolic activity, smooth muscle contractions, and glandular secretions [30]. Additional studies suggested that this uptake may also occur due to intra-luminal activity. Since gut microbes are one of the main luminal components, it was proposed that the gut microbiota may play an additional role in concentrating luminal 18F-FDG [32]. A single study demonstrated suppression of mean background 18F-FDG uptake in individuals without known colonic disease following pretreatment with the antibiotic rifaximin for 2 days [30]. However since rifaximin has an additional anti-inflammatory activity, it is possible that the decrease in uptake was secondary to decrease in inflammation. So far, no study has been able to measure intra-luminal or fecal 18F-FDG or suggest a mechanism for possible 18F-FDG transition from the intra-vascular compartment to the gut lumen. In the current study we demonstrated not only an increase in total colonic 18F-FDG uptake but also an increase in each of the different colonic regions, further supporting a diffuse metabolic effect rather than a local effect (such as muscle contraction or inflammation) as an explanation for the results. Finally, we cannot rule out possible direct effects of the antibiotic therapy or the PEG on the colonic mucosa as a possible explanation for the increased uptake, however since the PET imaging was done after this treatment it is a less likely explanation.

Although the current study measured both SUV_{mean} and SUV_{max} and found similar statistically significant results for both measures, we recommend using SUV_{max} for future measurements of physiologic colonic uptake. While SUV_{mean} includes the entire luminal uptake within the ROI which is mainly composed of air that has no 18F-FDG uptake, SUV_{max} consists largely of true mucosal uptake, increasing our ability to detect even minor changes.

In summary, we observed that reduction of colonic bacterial load by broad-spectrum antibiotics can be detected in humans by observing an increase in physiological colonic 18F-FDG uptake possibly due to a shift in colonocyte metabolism from lipolysis of SCFA to glycolysis. Therefore, colonic 18F-FDG uptake may represent a novel imaging approach to capturing the functional consequence of the microbiota-host interaction. This method may provide in the future a simple tool for early detection of a large number of diseases that are associated with change in the microbiota. Future studies are required in order to validate our results, evaluate the effect of specific diets on the microbiota and 18F-FDG uptake, and assess options of using different tracers, such as SCFA, as a way to image additional metabolic pathways. The described method views the microbiota as a distinct organ that communicates with its environment and affects multiple biological pathways. Using PET imaging allows us to study the functional aspects of microbiota-host interaction compared to genetic methods that focus on identification of specific bacterial phyla. Together these two methods are complementary and of utmost clinical significance.

Author Contributions

Conceptualization: Ben Boursi, Thomas J. Werner, Saeid Gholami, James D. Lewis, Gary D. Wu, Abass Alavi, Yu-Xiao Yang.

Data curation: Ben Boursi, Thomas J. Werner, Saeid Gholami, Sina Houshmand, James D. Lewis, Abass Alavi, Yu-Xiao Yang.

Formal analysis: Ben Boursi, Thomas J. Werner, Saeid Gholami, Sina Houshmand, Ronac Mamtani, Abass Alavi, Yu-Xiao Yang.

Investigation: Ben Boursi, Thomas J. Werner, Saeid Gholami, Sina Houshmand, Ronac Mamtani, James D. Lewis, Gary D. Wu, Abass Alavi, Yu-Xiao Yang.

Methodology: Ben Boursi, Thomas J. Werner, Saeid Gholami, Sina Houshmand, Ronac Mamtani, James D. Lewis, Gary D. Wu, Abass Alavi, Yu-Xiao Yang.

Writing – original draft: Ben Boursi, Thomas J. Werner, Saeid Gholami, Sina Houshmand, Ronac Mamtani, James D. Lewis, Gary D. Wu, Abass Alavi, Yu-Xiao Yang.

Writing – review & editing: Ben Boursi, Thomas J. Werner, Saeid Gholami, Sina Houshmand, Ronac Mamtani, James D. Lewis, Gary D. Wu, Abass Alavi, Yu-Xiao Yang.

References

1. Marchesi JR, Adams DH, Fava F, Hermes GD, Hirschfield GM, Hold G et al. The gut microbiota and host health: a new clinical frontier. *Gut*. 65, 330–9 (2016). <https://doi.org/10.1136/gutjnl-2015-309990> PMID: 26338727
2. Cox LM, Yamanishi S, Sohn J, Alekseyenko AV, Leung JM, Cho I et al. Altering the intestinal microbiota during a critical developmental window has lasting metabolic consequences. *Cell*. 158,705–21 (2014). <https://doi.org/10.1016/j.cell.2014.05.052> PMID: 25126780
3. Cho I, Yamanishi S, Cox L, Methé BA, Zavadil J, Li K et al. Antibiotics in early life alter the murine colonic microbiome and adiposity. *Nature*. 488,621–6 (2012). <https://doi.org/10.1038/nature11400> PMID: 22914093
4. Qin J, Li Y, Cai Z, Li S, Zhu J, Zhang F et al. A metagenome-wide association study of gut microbiota in type 2 diabetes. *Nature*. 490,55–60 (2012). <https://doi.org/10.1038/nature11450> PMID: 23023125
5. Karlsson FH, Tremaroli V, Nookaew I, Bergström G, Behre CJ, Fagerberg B et al. Gut metagenome in European women with normal, impaired and diabetic glucose control. *Nature*. 498,99–103 (2013). <https://doi.org/10.1038/nature12198> PMID: 23719380
6. Nylund L, Nermes M, Isolauri E, Salminen S, de Vos WM, Satokari R. Severity of atopic disease inversely correlates with intestinal microbiota diversity and butyrate-producing bacteria. *Allergy*. 70,241–244 (2015). <https://doi.org/10.1111/all.12549> PMID: 25413686
7. Zhang X, Zhang D, Jia H, Feng Q, Wang D, Liang D et al. The oral and gut microbiomes are perturbed in rheumatoid arthritis and partly normalized after treatment. *Nat Med*. 21,895–905 (2015). <https://doi.org/10.1038/nm.3914> PMID: 26214836
8. Ling Z, Li Z, Liu X, Cheng Y, Luo Y, Tong X. Altered fecal microbiota composition associated with food allergy in infants. *Appl Environ Microbiol*. 80,2546–2554 (2014). <https://doi.org/10.1128/AEM.00003-14> PMID: 24532064
9. Hevia A, Milani C, López P, Donado CD, Cuervo A, González S. Allergic Patients with Long-Term Asthma Display Low Levels of Bifidobacterium adolescentis. *PLoS One*. 11,e0147809 (2016). <https://doi.org/10.1371/journal.pone.0147809> PMID: 26840903
10. Maloy KJ, Powrie F. Intestinal homeostasis and its breakdown in inflammatory bowel disease. *Nature*. 474,298–306 (2011). <https://doi.org/10.1038/nature10208> PMID: 21677746
11. Abreu MT, Peek RM. Gastrointestinal malignancy and the microbiome. *Gastroenterology*. 146,1534–1546 (2014). <https://doi.org/10.1053/j.gastro.2014.01.001> PMID: 24406471
12. Reddy BS, Narisawa T, Wright P, Vukusich D, Weisburger JH, Wynder EL. Colon carcinogenesis with Azoxymethane and Dimethylhydrazine in germ free rats. *Cancer Res*. 35,287–290 (1975). PMID: 162868

13. Sobhani I, Tap J, Roudot-Thoraval F, Roperch JP, Letulle S, Langella P. Microbial dysbiosis in colorectal cancer (CRC) patients. *PLoS One*. 6,e16393 (2011). <https://doi.org/10.1371/journal.pone.0016393> PMID: 21297998
14. Dejea CM, Wick EC, Hechenbleikner EM, White JR, Mark Welch JL, Rossetti BJ et al. Microbiota organization is a distinct feature of proximal colorectal cancers. *Proc Natl Acad Sci U S A*. 111,18321–6 (2014). <https://doi.org/10.1073/pnas.1406199111> PMID: 25489084
15. Weir TL, Manter DK, Sheflin AM, Barnett BA, Heuberger AL, Ryan EP. Stool microbiome and metabolome differences between colorectal cancer patients and healthy adults. *PLoS One*. 8,e70803 (2013). <https://doi.org/10.1371/journal.pone.0070803> PMID: 23940645
16. Roediger WE. Role of anaerobic bacteria in the metabolic welfare of the colonic mucosa in man. *Gut*. 21(9),793–798 (1980). PMID: 7429343
17. Roediger WE. Utilization of nutrients by isolated epithelial cells of the rat colon. *Gastroenterology*. 83(2),424–429 (1982). PMID: 7084619
18. Donohoe DR, Wali A, Brylawski BP, Bultman SJ. Microbial regulation of glucose metabolism and cell cycle progression in mammalian colonocytes. *PLoS ONE*. 7,e46589 (2012). <https://doi.org/10.1371/journal.pone.0046589> PMID: 23029553
19. Ni J, Shen D, Chen EZ, Bittinger K, Bailey A, Roggiani M et al. A Role for Bacterial Urease in Crohn's Disease and Gut Dysbiosis. *Science Trans Med*. 9,416 (2017).
20. Ghosh SS, Bie J, Wang J, Ghosh S. Oral supplementation with non-absorbable antibiotics or curcumin attenuates western diet-induced atherosclerosis and glucose intolerance in LDLR^{-/-} mice—role of intestinal permeability and macrophage activation. *PLoS One*. 9,e108577 (2014). <https://doi.org/10.1371/journal.pone.0108577> PMID: 25251395
21. Bender JF, Schimpff SC, Young VM, Fortner CL, Brouillet MD, Love LJ et al. Role of vancomycin as a component of oral nonabsorbable antibiotics for microbial suppression in leukemic patients. *Antimicrob Agents Chemother*. 15,455–60 (1979). PMID: 464573
22. Gontier E, Fourme E, Wartski M, Blondet C, Bonardel G, Le Stanc E et al. High and typical 18F-FDG bowel uptake in patients treated with metformin. *Eur J Nucl Med Mol Imaging*. 35,95–9 (2008). <https://doi.org/10.1007/s00259-007-0563-6> PMID: 17786437
23. Bahler L, Stroek K, Hoekstra JB, Verberne HJ, Holleman F et al. Metformin-related colonic glucose uptake; potential role for increasing glucose disposal?—A retrospective analysis of (18)F-FDG uptake in the colon on PET-CT. *Diabetes Res Clin Pract*. 114,55–63 (2016). <https://doi.org/10.1016/j.diabres.2016.02.009> PMID: 27103370
24. Ozülker T, Ozülker F, Mert M, Ozpaçacı T. Clearance of the high intestinal (18)F-FDG uptake associated with metformin after stopping the drug. *Eur J Nucl Med Mol Imaging*. 37,1011–7 (2010). <https://doi.org/10.1007/s00259-009-1330-7> PMID: 20107796
25. Oh JR, Song HC, Chong A, Ha JM, Jeong SY, Min JJ et al. Impact of medication discontinuation on increased intestinal FDG accumulation in diabetic patients treated with metformin. *AJR Am J Roentgenol*. 195,1404–10 (2010). <https://doi.org/10.2214/AJR.10.4663> PMID: 21098202
26. Steenkamp DW, McDonnell ME, Meibom S. Metformin may be associated with false-negative cancer detection in the gastrointestinal tract on PET/CT. *Endocr Pract*. 20,1079–83 (2014). <https://doi.org/10.4158/EP14127.RA> PMID: 25100379
27. Massollo M, Marini C, Brignone M, Emionite L, Salani B, Riondato M et al. Metformin temporal and localized effects on gut glucose metabolism assessed using 18F-FDG PET in mice. *J Nucl Med*. 54,259–66 (2013). <https://doi.org/10.2967/jnumed.112.106666> PMID: 23287574
28. Capitanio S, Marini C, Sambuceti G, Morbelli S. Metformin and cancer: Technical and clinical implications for FDG-PET imaging. *World J Radiol*. 7,57–60 (2015). <https://doi.org/10.4329/wjr.v7.i3.57> PMID: 25825634
29. Mihaylova MM, Shaw RJ. The AMPK signaling pathway coordinates cell growth, autophagy and metabolism. *Nature Cell Biology*. 13,1016–1023 (2011). <https://doi.org/10.1038/ncb2329> PMID: 21892142
30. Franquet E, Palmer MR, Gifford AE, Selen DJ, Chen YC, Sedora-Roman N et al. Rifaximin suppresses background intestinal 18F-FDG uptake on PET/CT scans. *Nucl Med Commun*. 35,1026–1031 (2014). <https://doi.org/10.1097/MNM.000000000000170> PMID: 25076161
31. Tatlidil R, Jadvar H, Bading JR, Conti PS. Incidental colonic fluorodeoxyglucose uptake: correlation with colonoscopic and histopathologic findings. *Radiology*. 224,783–787 (2002). <https://doi.org/10.1148/radiol.2243011214> PMID: 12202714
32. Brader P, Stritzker J, Riedl CC, Zanzonico P, Cai S, Burnazi EM et al. *Escherichia coli* Nissle 1917 facilitates tumor detection by positron emission tomography and optical imaging. *Clin Cancer Res*. 14,2295–2302 (2008). <https://doi.org/10.1158/1078-0432.CCR-07-4254> PMID: 18369089