



HHS Public Access

Author manuscript

Cell Host Microbe. Author manuscript; available in PMC 2018 February 19.

Published in final edited form as:

Cell Host Microbe. 2017 September 13; 22(3): 421–423. doi:10.1016/j.chom.2017.08.005.

Correction

The Ubiquitin Ligase Smurf1 Functions in Selective Autophagy of *Mycobacterium tuberculosis* and Anti-tuberculous Host Defense

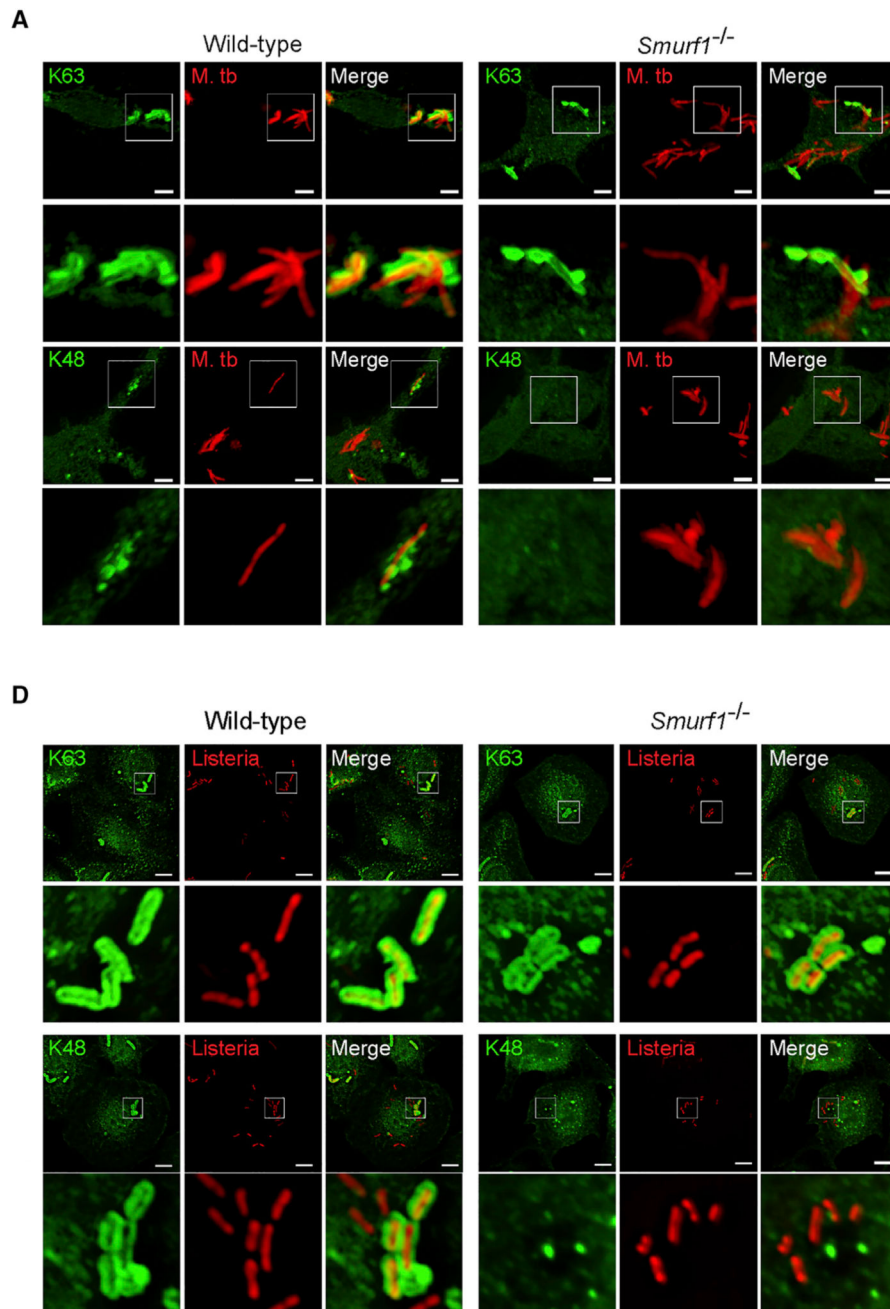
Luis H. Franco, Vidhya R. Nair, Caitlyn R. Scharn, Ramnik J. Xavier, Jose R. Torrealba, Michael U. Shiloh,* and Beth Levine*

*Correspondence: michael.shiloh@utsouthwestern.edu (M.U.S.),
beth.levine@utsouthwestern.edu (B.L.)

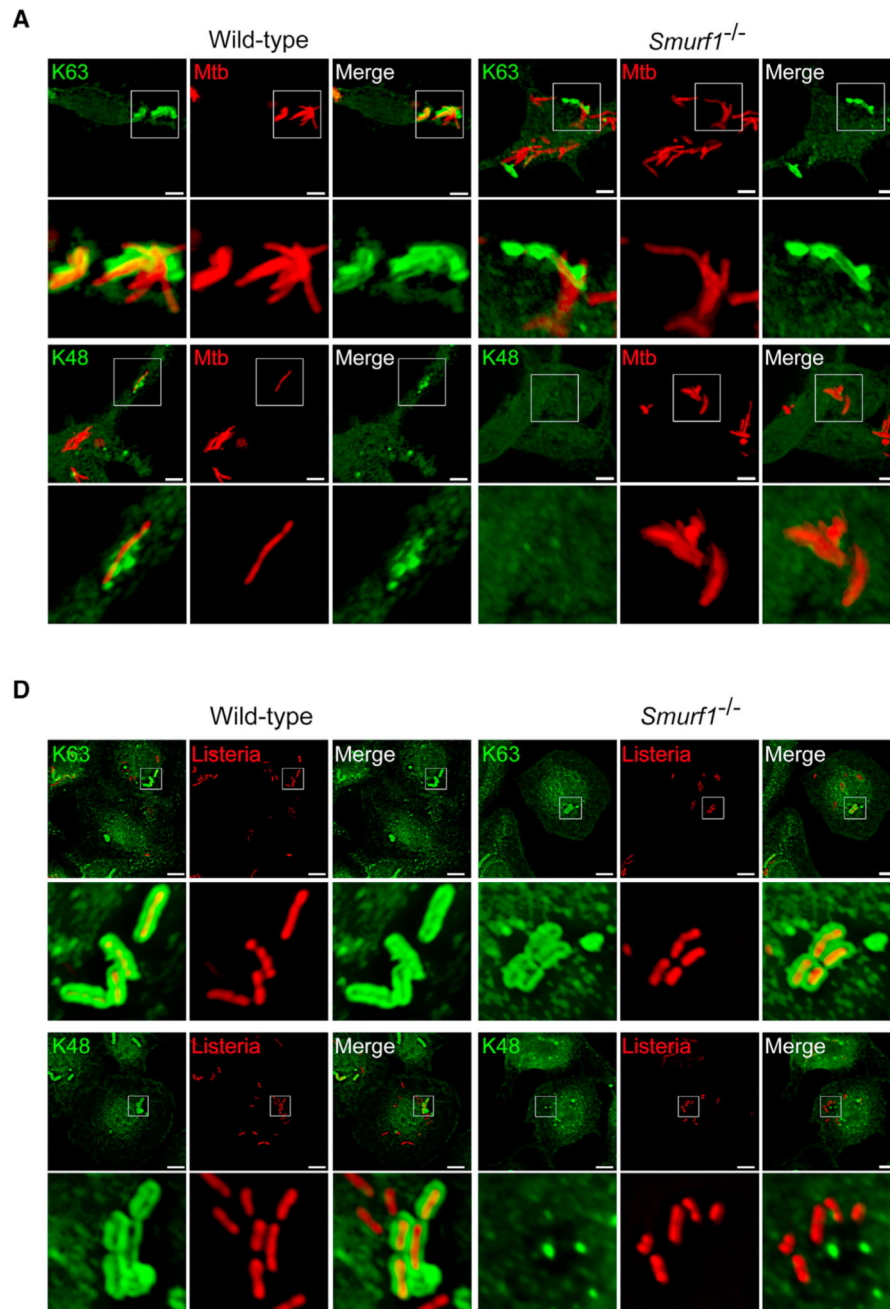
<http://dx.doi.org/10.1016/j.chom.2017.08.005>

(*Cell Host & Microbe* 21, 59–72; January 11, 2017)

A reader brought errors in Figure 4 to the authors' attention. In Figures 4A and 4D, several immunofluorescence panels were inadvertently reversed during their final arrangement. Panels that should have indicated the merge image were incorrectly placed where the single channel GFP image should be, and vice versa. Figures 4A and 4D have now been corrected online. The original results and conclusions are unaffected by these corrections. The authors accept responsibility for not detecting these errors prior to publication and regret any inconvenience this has caused.



Figures 4A and 4D.
Smurf1 Controls Chronic *M. tuberculosis* Infection In Vivo (corrected)



Figures 4A and 4D.
 Smurf1 Controls Chronic *M. tuberculosis* Infection In Vivo (original)