

Cataract surgical rates

Cataract remains the largest cause of blindness worldwide. Cataract surgical rate, or CSR, measures how many cataract operations are performed per million population in a given year. The map shows the latest available data taken from the IAPB atlas.

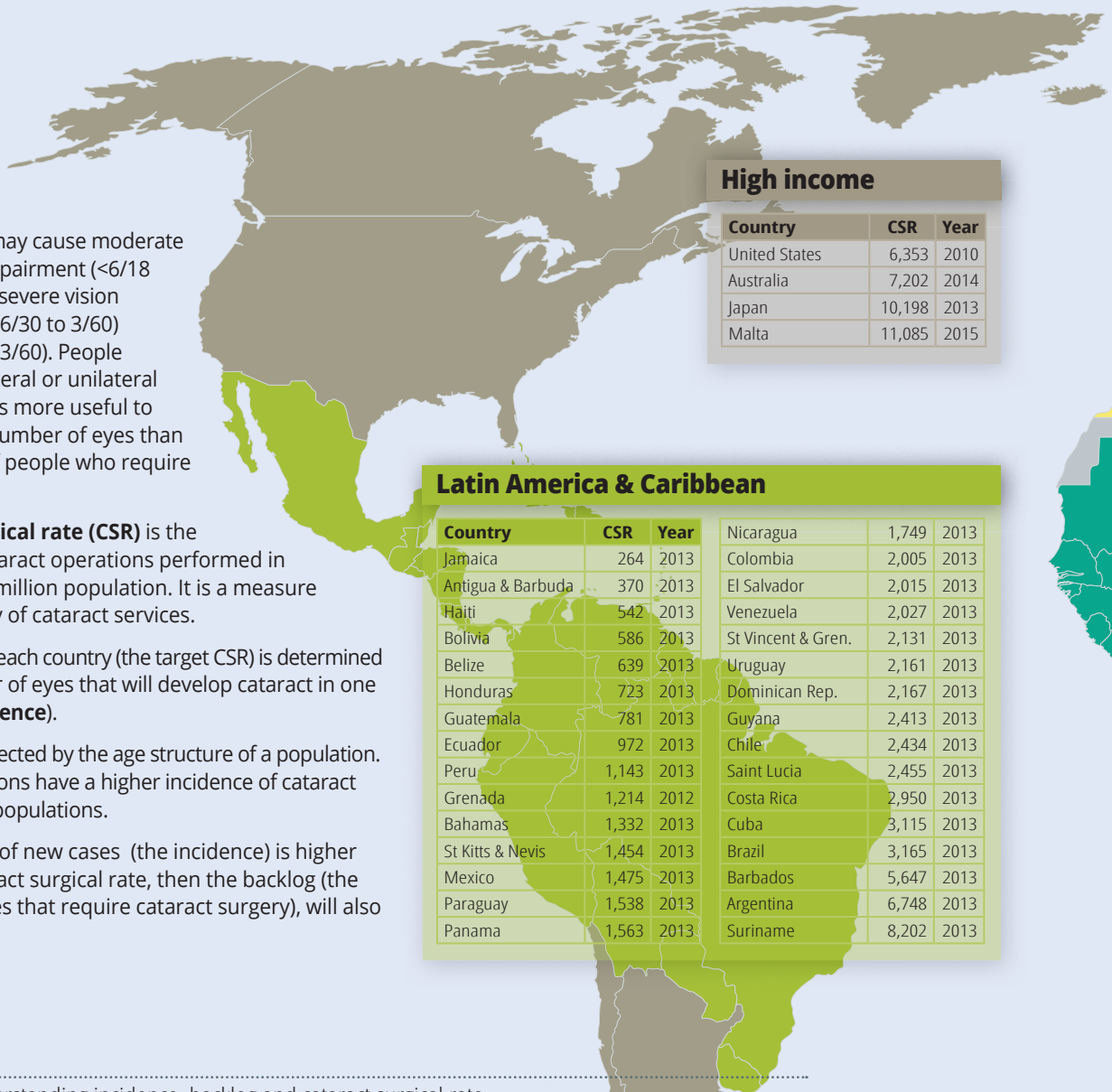
Cataract may cause moderate vision impairment (<6/18 to 6/60), severe vision impairment, (<6/30 to 3/60) or blindness (<3/60). People may have bilateral or unilateral cataract, so it is more useful to consider the number of eyes than the number of people who require surgery.

Cataract surgical rate (CSR) is the number of cataract operations performed in one year, per million population. It is a measure of the quantity of cataract services.

CSR needed in each country (the target CSR) is determined by the number of eyes that will develop cataract in one year (the **incidence**).

Incidence is affected by the age structure of a population. Older populations have a higher incidence of cataract than younger populations.

If the number of new cases (the incidence) is higher than the cataract surgical rate, then the backlog (the number of eyes that require cataract surgery), will also be high.



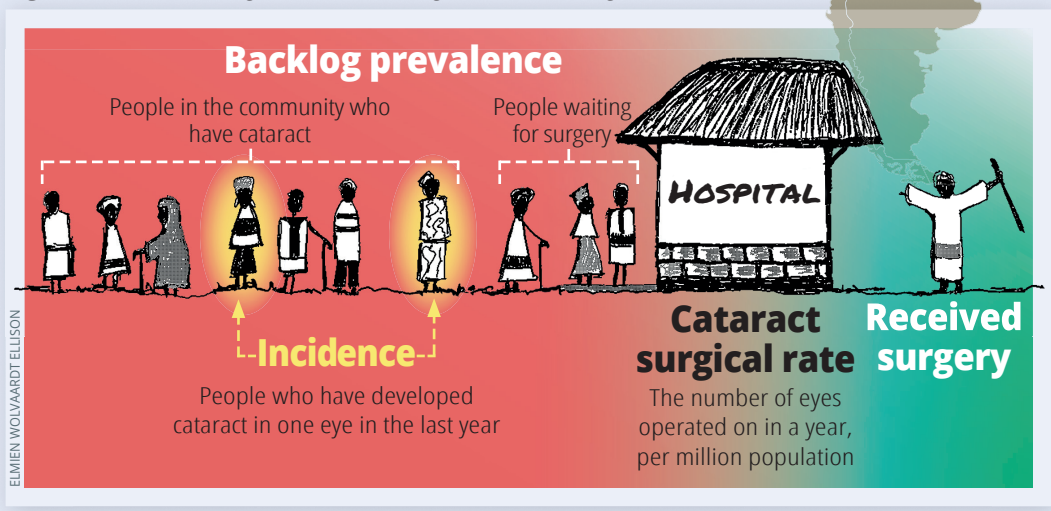
High income

Country	CSR	Year
United States	6,353	2010
Australia	7,202	2014
Japan	10,198	2013
Malta	11,085	2015

Latin America & Caribbean

Country	CSR	Year
Jamaica	264	2013
Antigua & Barbuda	370	2013
Haiti	542	2013
Bolivia	586	2013
Belize	639	2013
Honduras	723	2013
Guatemala	781	2013
Ecuador	972	2013
Peru	1,143	2013
Grenada	1,214	2012
Bahamas	1,332	2013
St Kitts & Nevis	1,454	2013
Mexico	1,475	2013
Paraguay	1,538	2013
Panama	1,563	2013
Nicaragua	1,749	2013
Colombia	2,005	2013
El Salvador	2,015	2013
Venezuela	2,027	2013
St Vincent & Gren.	2,131	2013
Uruguay	2,161	2013
Dominican Rep.	2,167	2013
Guyana	2,413	2013
Chile	2,434	2013
Saint Lucia	2,455	2013
Costa Rica	2,950	2013
Cuba	3,115	2013
Brazil	3,165	2013
Barbados	5,647	2013
Argentina	6,748	2013
Suriname	8,202	2013

Figure 1 Understanding incidence, backlog and cataract surgical rate



A woman sees for the first time after cataract surgery. TANZANIA



SUZANNE PORTERS/IGHTSAVERS

Central Europe, Eastern Europe & Central Asia

Country	CSR	Year
Moldova	977	2014
Romania	1,361	2009
Serbia	2,478	2009
Bulgaria	4,616	2009
Lithuania	4,670	2009
Latvia	5,673	2009
Czechia	7,800	2009
Hungary	8,372	2014

North Africa & Middle East

Country	CSR	Year
Afghanistan	717	2014
Oman	969	2014
Saudi Arabia	1,187	2014
Kuwait	1,462	2014
Sudan	2,121	2014
Egypt	2,761	2014
Pakistan	2,819	2014
Morocco	2,924	2014

South Asia

Country	CSR	Year
Bangladesh	1,193	2014
Maldives	1,441	2014
Bhutan	1,553	2015
Myanmar	1,978	2015
Nepal	4,364	2015
India	4,830	2014
Sri Lanka	5,386	2015

South-East Asia, East Asia & Oceania

Country	CSR	Year
Papua New Guinea	196	2014
Micronesia	531	2014
Timor-Leste	784	2014
Laos	888	2014
Mongolia	1,068	2014
Malaysia	1,397	2014
China	1,402	2015
Indonesia	1,411	2014
Philippines	1,485	2014
Solomon Islands	1,601	2012
Cambodia	1,844	2015
Kiribati	2,185	2014
Vietnam	2,435	2014
Singapore	2,627	2014
Thailand	3,102	2015

Sub-Saharan Africa

Country	CSR	Year
Cote D'Ivoire	150	2014
DR Congo	157	2010
Liberia	157	2014
Uganda	192	2010
South Sudan	240	2010
Burundi	247	2014
Nigeria	317	2015
Mozambique	333	2015
Madagascar	368	2014
Sierra Leone	409	2015
Togo	429	2014
Ethiopia	434	2010
Senegal	472	2014
Rwanda	483	2015
Kenya	494	2014
Tanzania	518	2010
Malawi	523	2010
Guinea	535	2014
Benin	578	2014
Zimbabwe	631	2014
Cameroon	686	2014
Zambia	690	2014
Niger	708	2014
Ghana	710	2014
Mali	807	2015
South Africa	847	2015
Lesotho	937	2014
Botswana	1,490	2015
Mauritius	4,604	2016

KEY

For data analysis, the world is divided into seven regions, based on geographic location and country GDP.

- High income
- Latin America & Caribbean
- Central Europe, Eastern Europe & Central Asia
- North Africa & Middle East
- Sub-Saharan Africa
- South Asia
- South-East Asia, East Asia & Oceania

© The author/s and Community Eye Health Journal 2017. This is an Open Access article distributed under the Creative Commons Attribution Non-Commercial License.