



# Associations Between Sexual Orientation and Overall and Site-Specific Diagnosis of Cancer: Evidence From Two National Patient Surveys in England

Catherine L. Saunders, Catherine Meads, Gary A. Abel, and Georgios Lyratzopoulos

Author affiliations and support information (if applicable) appear at the end of this article.

Published at [jco.org](http://jco.org) on September 25, 2017.

Corresponding author: Catherine L. Saunders, PhD, Cambridge Centre for Health Services Research, Institute of Public Health, University of Cambridge School of Clinical Medicine, Forvie Site, Robinson Way, Cambridge, CB2 0SR, United Kingdom; e-mail: [ks659@medschl.cam.ac.uk](mailto:ks659@medschl.cam.ac.uk).

© 2017 by American Society of Clinical Oncology. Licensed under the Creative Commons Attribution 4.0 License.



0732-183X/17/3532w-3654w/\$20.00

## ABSTRACT

### Purpose

To address gaps in evidence on the risk of cancer in people from sexual minorities.

### Patients and Methods

We used data from 796,594 population-based English General Practice Patient Survey responders to explore the prevalence of self-reported diagnoses of cancer in the last 5 years among sexual minorities compared with heterosexual women and men. We analyzed data from 249,010 hospital-based English Cancer Patient Experience Survey responders with sexual orientation as a binary outcome, and International Classification of Diseases, Tenth, Revision, diagnosis as covariate—38 different common and rarer cancers, with breast and prostate cancer as baseline categories for women and men, respectively—to examine whether people from sexual minorities are over- or under-represented among different cancer sites. For both analyses, we used logistic regression, stratified by sex and adjusted for age.

### Results

A diagnosis of cancer in the past 5 years was more commonly reported by male General Practice Patient Survey responders who endorsed gay or bisexual orientation compared with heterosexual men (odds ratio [OR], 1.31; 95% CI, 1.15 to 1.49;  $P < .001$ ) without evidence of a difference between lesbian or bisexual compared with heterosexual women (OR, 1.14; 95% CI, 0.94 to 1.37;  $P = .19$ ). For most common and rarer cancer sites (30 of 33 in women, 28 of 32 in men), the odds of specific cancer site diagnosis among Cancer Patient Experience Survey respondents seemed to be independent of sexual orientation; however, there were notable differences in infection-related (HIV and human papillomavirus [HPV]) cancers. Gay or bisexual men were over-represented among men with Kaposi's sarcoma (OR, 48.2; 95% CI, 22.0 to 105.6), anal (OR, 15.5; 95% CI, 11.0 to 21.9), and penile cancer (OR, 1.8; 95% CI, 0.9 to 3.7). Lesbian or bisexual women were over-represented among women with oropharyngeal cancer (OR, 3.2; 95% CI, 1.7 to 6.0).

### Conclusion

Large-scale evidence indicates that the distribution of cancer sites does not vary substantially by sexual orientation, with the exception of some HPV- and HIV-associated cancers. These findings highlight the importance of HPV vaccination in heterosexual and sexual minority populations.

*J Clin Oncol* 35:3654-3661. © 2017 by American Society of Clinical Oncology. Licensed under the Creative Commons Attribution 4.0 License: <http://creativecommons.org/licenses/by/4.0/>

## INTRODUCTION

Over the last 30 years, there has been substantial research efforts in the area of the health of sexual minority populations; however, this research has focused on sexually transmitted diseases, particularly HIV,<sup>1,2</sup> and little is known about how cancer risk varies among sexual minorities compared with heterosexual populations.<sup>2-4</sup> This contrasts with the increasing disease burden that is associated with

cancer, which is currently the leading cause of death in high-income countries,<sup>5</sup> and, after mental health services and circulatory diseases, cancer services make up the third largest category of spending in contemporary health care systems.<sup>6</sup>

Approximately four of 10 cancers are attributable to lifestyle and environmental risk factors, including smoking, alcohol consumption, dietary factors, occupational exposures, and sexual and reproductive history.<sup>7-9</sup> Disparities in cancer incidence among people from sexual minorities compared

## ASSOCIATED CONTENT



Appendix  
DOI: <https://doi.org/10.1200/JCO.2017.72.5465>

DOI: <https://doi.org/10.1200/JCO.2017.72.5465>

with heterosexual populations are likely. Lifetime exposure to risk factors among sexual minority and heterosexual populations is likely to differ—for example, smoking initiation is higher among lesbian, gay, and bisexual young people in both the United Kingdom<sup>10</sup> and the United States.<sup>11</sup> Hormonal factors are also likely to be important for some cancers; child bearing and the use of oral contraceptives are associated with a risk of female breast and ovarian cancer,<sup>12</sup> and lesbian and heterosexual women are differently exposed to these two factors.<sup>13</sup> In addition, HIV prevalence in the United Kingdom is 0.2%, but among men who have sex with men (age 15 to 44 years), it is 5%<sup>14</sup>; immune deficiency is associated with an increased risk of several cancers.<sup>15,16</sup> Approximately 4.8% of cancer diagnoses worldwide in 2008 were attributable to human papillomavirus (HPV), with differences in exposure burden in men and women.<sup>17</sup> Understanding how the risk of cancer varies by sexual orientation is therefore of particular importance to help understand where best to target preventive efforts.

In the United States, the Institute of Medicine in 2011 called for research investment in the health of sexual minorities, including basic epidemiologic research, which highlighted the lack of relevant evidence.<sup>18</sup> Similarly, ASCO has called for research on sexual orientation–related disparities and increased data collection.<sup>19</sup> In the United Kingdom, cancer charities have highlighted the continuing limitations of data on lesbian, gay, and bisexual people with cancer.<sup>20</sup>

It is usually difficult to study sexual orientation in population health and epidemiologic studies, primarily because this information is simply not known or not collected.<sup>19</sup> Nonetheless, provided that items on sexual orientation are included, patient experience surveys provide unique opportunities for acquiring insight into the risk of cancer in sexual minorities.<sup>21</sup>

Against this background, we used data from two English patient surveys, the General Practice Patient Survey (GPPS) and the Cancer Patient Experience Survey (CPES), to examine two research

**Table 1.** Cancer Diagnosis Frequency and Unadjusted and Adjusted Percentages of Cancer Patient Experience Survey Responders Reporting Lesbian or Bisexual Sexual Orientation by Cancer Site (women)

Cancer	All Women, No.	Lesbian/Bisexual Women, No. (unadjusted %)*	Adjusted %†
All	131,073	920 (0.7)	0.7
Oropharyngeal (C01, C09, C10)	435	10 (2.3)	2.1
Oral (C02, C03, C04, C05)	569	< 6	0.8
Parotid/salivary (C07, C08)	112	< 6	
Esophageal (C15)	1,317	< 6	0.3
Stomach (C16)	950	10 (1.1)	1.5
Small intestine (C17)	246	< 6	0.5
Colon (C18)	7,644	29 (0.4)	0.5
Rectal (C19, C20)	4,262	15 (0.4)	0.4
Anal (C21)	566	< 6	0.2
Liver (C22)	439	< 6	0.3
Gallbladder (C23)	107	< 6	1.3
Pancreatic (C25)	1,075	9 (0.8)	1.1
Laryngeal (C32)	198	< 6	0.7
Lung (C33, C34)	5,873	30 (0.5)	0.7
Bone sarcoma (C40, C41)	252	< 6	0.8
Melanoma (C43)	2,977	20 (0.7)	0.6
Mesothelioma (C45)	254	< 6	2.4
Kaposi's sarcoma (C46)	8	0 (0.0)	
Soft tissue sarcoma (C49)	441	< 6	0.4
Breast (C50)	48,296	382 (0.8)	0.7
Vulval/vaginal (C51, C52)	812	< 6	0.4
Cervical (C53)	1,462	19 (1.3)	0.7
Endometrial (C54, C55)	5,163	52 (1.0)	1.3
Ovarian (C56)	6,402	47 (0.7)	0.8
Renal (C64)	1,169	< 6	0.5
Ureteric (C65, C66)	272	< 6	1.4
Bladder (C67)	4,565	22 (0.5)	0.8
Brain (C71)	698	6 (0.9)	0.5
Thyroid (C73)	1,302	13 (1.0)	0.6
Cancer of unknown primary (C77, C78, C79, C80)	10,330	61 (0.6)	0.6
Hodgkin lymphoma (C81)	895	18 (2.0)	1.1
Non-Hodgkin lymphoma (C82, C83, C85)	7,312	54 (0.7)	0.9
Multiple myeloma (C90)	5,198	24 (0.5)	0.7
Leukemia (C91, C92, C93, C94, C95)	3,378	26 (0.8)	0.8
Ductal carcinoma in situ (D05)	3,311	20 (0.6)	0.5
All other	2,783	22 (0.8)	0.9

\*Cells with fewer than six observations are suppressed in the reporting of crude counts and percentages, but are included in all multivariable analyses, including the estimation of adjusted percentages.

†These percentages are predicted from multivariable logistic regression models to give the percentage of women with cancer at a particular site who are expected to report lesbian/bisexual sexual orientation, should they have the same age composition as all included survey responders with this cancer diagnosis (this percentage is also known as a recycled prediction). Odds ratios and 95% CI from this model are presented in Fig 1. Parotid/salivary cancer and Kaposi's sarcoma are excluded from multivariable analysis in women because small numbers of individuals led to perfect prediction in the multivariable models, and adjusted percentages are not presented.

questions: Do women and men from sexual minorities report a cancer diagnosis in the previous 5 years more or less frequently than heterosexual women and men? And, among recently treated survivors of cancer, is there variation between cancer sites in the proportion of men and women who report gay, lesbian, or bisexual sexual orientation?

## PATIENTS AND METHODS

### Data

GPPS is a national survey of the patient experience of primary care and is sent by postal mail to approximately 2.7 million patients in England age  $\geq 18$  years who have been continuously registered with a general practice for at least 6 months, with a respondent sample of approximately 1 million (response rate approximately 37%). A stratified sample of patients was drawn from the practice list of each general practice in England, with oversampling of patients from practices that were known from prior surveys to have low response rates. Full details are published in the technical report.<sup>22</sup> Data from 2011/2012 were used in this analysis. Data from GPPS have been previously used to describe the patient experience, health-related quality of life, and health service utilization of sexual minorities.<sup>23,24</sup>

CPES is a separate survey of recently treated survivors of cancer<sup>25</sup> that is sent annually to all patients age  $\geq 16$  years who were treated for cancer in a National Health Service hospital in England during a 3-month period. Anonymous data from 2010, 2011/2012, 2013, and 2014 were obtained via the UK Data Archive, and full survey details are available.<sup>26-29</sup>

This study involved the secondary analysis of previously collected anonymous data, for which formal ethical approval is not required.<sup>30</sup> All cancer diagnoses are included in this analysis; however, cells counts of fewer than six individuals are suppressed in reporting, which is in line with best practice.<sup>31</sup>

### Overall and Site-Specific Diagnosis of Cancer

In the GPPS, respondents are asked “Which, if any, of the following medical conditions do you have?,” with 16 response options, including “Cancer in the last 5 years,” plus “None of these conditions” and “I would prefer not to say.” “Prefer not to say” responses and responses for which no options were ticked were coded as missing for this analysis. No additional detail about the nature of the cancer diagnosis—that is, in relation to cancer site—is available in this survey.

In CPES, patients were identified for inclusion in the survey sampling frame when the main hospital record for inpatient or outpatient treatment recorded an International Classification of Diseases, Tenth Revision cancer diagnosis code for inpatient or outpatient cancer treatment. In line with previous research,<sup>32</sup> but with the addition of Kaposi’s sarcoma, we included 38 common and rarer cancer site groups in the analysis (Table A8, online-only).

### Sexual Orientation

Survey questions were used to identify respondents’ sexual orientation in both surveys. In GPPS, “Which of the following best describes how you think of yourself?” had the following possible responses: “Heterosexual/straight,” “Gay/Lesbian,” “Bisexual,” “Other,” or “I would prefer not to say.” In CPES, “Which of the following best describes your sexual orientation?” has the following possible responses: “Heterosexual/straight (opposite sex),” “Bisexual (both sexes),” “Gay or Lesbian (same sex),” “Other,” or “Prefer not to answer.”

### Demographic Information

In GPPS, survey responses for age 18 to 24 years, then 10-year age groups to age  $\geq 85$  years, gender, and ethnicity in five groups (ONS2011) were used. In CPES, hospital record recorded age and gender (as these are more complete), and survey-reported ethnicity in six groups (ONS2001) were used. For both surveys, the Index of Multiple Deprivation—a small geographic area measure of socioeconomic deprivation, derived from respondents’ postcodes—was used and divided into five groups by using quintile-defining cut points.<sup>33</sup>

### Analysis

In all analyses, women and men are considered separately, and all respondents—both those from sexual minorities and those who report heterosexual sexual orientation—are included. GPPS survey data are provided with weights that account for design and nonresponse<sup>22</sup>; therefore, descriptive analysis is presented for weighted data. For CPES, as all cancer cases within the sampling period were selected, design weights are not applicable, and only unweighted data are presented.

For our first analysis, using data from GPPS we performed logistic regression to examine variations in report of cancer diagnosis in the last 5 years by sexual orientation, including a test of any difference between gay or lesbian and bisexual individuals.

For the second analysis, we used data from recently treated survivors of cancer who responded to CPES with sexual orientation as a binary outcome—grouping gay or lesbian and bisexual respondents—and cancer

**Table 2.** Cancer Prevalence by Sexual Orientation Among GPPS Responders

Sexual Orientation	GPPS		Unadjusted/Crude		Adjusted for Age	
	All Respondents, No. (%)*	Respondents Who Report Having Had Cancer in the Last 5 Years, No. (%)*	Odds Ratio (95% CI)	<i>P</i>	Odds Ratio (95% CI)	<i>P</i>
All	796,594	32,437				
Women	445,469 (50.4)	16,094 (49.2)				
Men	351,125 (49.6)	16,343 (50.8)				
Women						
Heterosexual	440,698 (98.6)	15,982 (99.2)	Reference	< .001	Reference	.19
Lesbian	2,759 (0.6)	76 (0.5)	0.64 (0.53 to 0.77)		1.14 (0.94 to 1.37)	
Bisexual	2,012 (0.7)	36 (0.3)				
Men						
Heterosexual	343,719 (97.2)	16,094 (98.2)	Reference	< .001	Reference	< .001
Gay	5,584 (1.6)	187 (1.5)	0.71 (0.61 to 0.82)		1.45 (1.24 to 1.69)	
Bisexual	1,822 (0.5)	62 (0.4)	0.72 (0.56 to 0.92)		1.00 (0.78 to 1.30)	

Abbreviation: GPPS, General Practice Patient Survey.

\*These percentages are weighted to the population.

site as covariate. This analysis aimed to reveal overall patterns of variation between cancer sites in the proportion of men and women who report gay, lesbian, or bisexual sexual orientation. For a particular cancer site, higher or lower odds reflect differences in cancer diagnosis among people from sexual minorities compared with the reference site (breast in women, prostate in men). Our choice of these reference sites was based on analytical considerations—that is, because they were the cancers with the largest sample size, which allowed the most precise comparisons. In addition, from these models, we predicted the adjusted percentage of women and men with cancer of a particular site who were expected to report lesbian or bisexual or gay or bisexual sexual orientation should they have the same age composition as all included survey responders with this diagnosis (this percentage is also known as a recycled prediction).

Adjusting for ethnicity, deprivation, survey wave (CPES), and GP practice (GPPS) or hospital of treatment (CPES; using a random effect for organization) had a minimal effect on coefficients for cancer site, and, given this, to reduce the amount of missing observations as a result of incomplete information on deprivation and ethnicity, these variables were dropped from the main analyses, which are only adjusted for age (Appendix Tables A1 to A3, online only).

### Supplementary Analyses

We explored a series of sensitivity analyses. First, we considered each response option to the sexual orientation question separately—that is, “Gay/Lesbian,” “Bisexual,” “Other,” “I would prefer not to say,” and missing responses were compared with the response, “Heterosexual/straight,” to examine potential associations between our outcomes and patient groups other than those that endorsed heterosexual, gay/lesbian, and bisexual response options. Second, for CPES analysis, we also restricted the analysis to people who had been diagnosed with cancer in the past year to consider a population that more closely represented incident cancer cases<sup>34</sup> and to explore the potential impact of the same respondents being included across survey waves.

## RESULTS

Among 796,594 respondents from the population-based GPPS sampling frame, 32,437 of all respondents (3.0%) reported cancer in the past 5 years. Of the 12,177 respondents (2.1%) from sexual

**Table 3.** Cancer Diagnosis Frequency and Unadjusted and Adjusted Percentages of Cancer Patient Experience Survey Responders Reporting Gay or Bisexual Sexual Identity by Cancer Site (men)

Cancer	All Men, No.	Gay/Bisexual Men, No. (unadjusted %)*	Adjusted %†
All	117,937	1,279 (1.1)	1.1
Oropharyngeal (C01, C09, C10)	1,393	17 (1.2)	0.9
Oral (C02, C03, C04, C05)	821	14 (1.7)	1.4
Parotid/salivary (C07, C08)	151	< 6	1.2
Esophageal (C15)	3,735	44 (1.2)	1.2
Stomach (C16)	2,534	15 (0.6)	0.6
Small intestine (C17)	350	< 6	1.0
Colon (C18)	10,048	99 (1.0)	1.1
Rectal (C19, C20)	8,072	76 (0.9)	0.9
Anal (C21)	278	48 (17.3)	15.7
Liver (C22)	1,012	7 (0.7)	0.7
Gallbladder (C23)	43	< 6	
Pancreatic (C25)	1,229	16 (1.3)	1.3
Laryngeal (C32)	1,029	10 (1.0)	0.9
Lung (C33, C34)	7,070	63 (0.9)	1.0
Bone sarcoma (C40, C41)	352	6 (1.7)	0.9
Melanoma (C43)	2,843	43 (1.5)	1.3
Mesothelioma (C45)	1,111	6 (0.5)	0.6
Kaposi's sarcoma (C46)	28	13 (46.4)	35.4
Soft tissue sarcoma (C49)	578	7 (1.2)	0.9
Breast (C50)	345	< 6	1.3
Penile (C60)	331	8 (2.4)	2.3
Prostate (C61)	20,783	224 (1.1)	1.3
Testicular (C62)	1,054	26 (2.5)	0.9
Renal (C64)	2,314	30 (1.3)	1.2
Ureteric (C65, C66)	483	< 6	0.8
Bladder (C67)	16,687	136 (0.8)	1.0
Brain (C71)	1,045	22 (2.1)	1.1
Thyroid (C73)	560	14 (2.5)	1.6
Cancer of unknown primary (C77, C78, C79, C80)	6,362	61 (1.0)	1.0
Hodgkin lymphoma (C81)	992	29 (2.9)	1.4
Non-Hodgkin lymphoma (C82, C83, C85)	8,520	81 (1.0)	0.9
Multiple myeloma (C90)	7,304	67 (0.9)	1.0
Leukemia (C91, C92, C93, C94, C95)	5,674	47 (0.8)	0.7
Ductal carcinoma in situ (D05)	17	< 6	
All other	2,789	36 (1.3)	1.2

\*Cells with fewer than six observations are suppressed in the reporting of crude counts and percentages, but are included in all multivariable analyses, including the estimation of adjusted percentages.

†These percentages are predicted from multivariable logistic regression models to give the percentage of men with cancer at a particular site who are expected to report gay/bisexual sexual orientation, should they have the same age composition as all included survey responders with this cancer diagnosis (this percentage is also known as a recycled prediction). Odds ratios and 95% CI from this model are presented in Fig 2. Gallbladder and ductal carcinoma in situ are excluded from multivariable analysis in men because small numbers of individuals led to perfect prediction in the multivariable models.

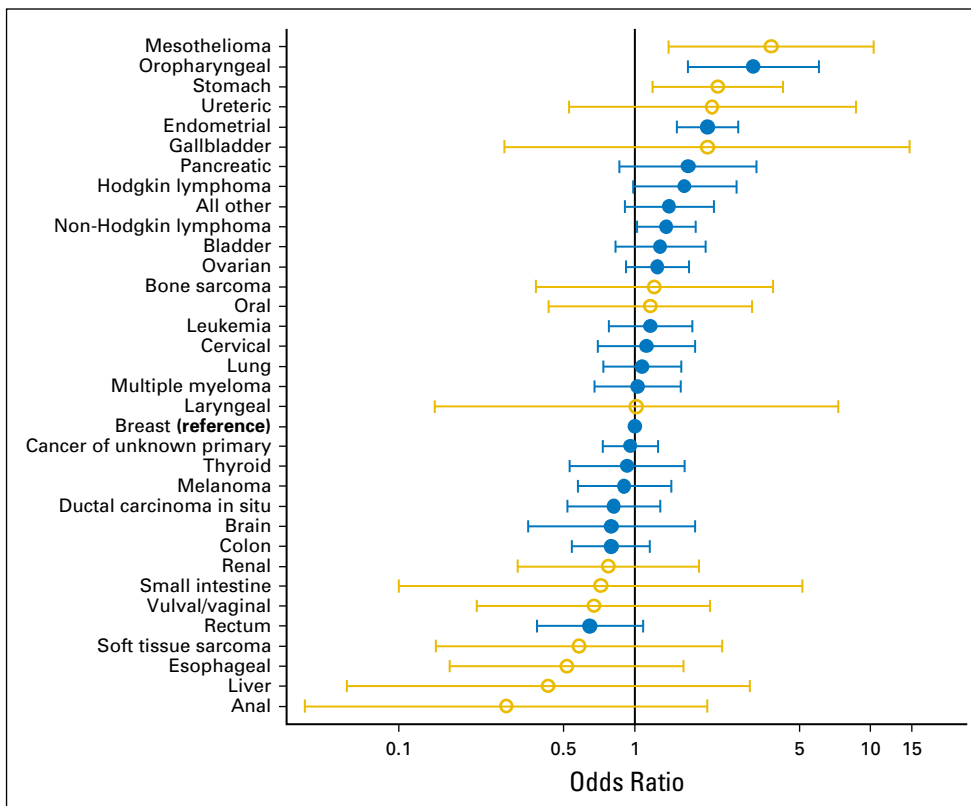
minorities, 361 (1.9%) reported cancer in the past 5 years. Among the 240,010 recently treated survivors of cancer who responded to CPES between 2010 and 2014, there were 2,199 respondents (0.9%) who endorsed a sexual minority orientation.

Before adjustment for age, people from sexual minorities are less likely to report cancer in the past 5 years, as, on average, people who report nonheterosexual sexual orientation are younger than those who report heterosexual sexual orientation.<sup>23</sup> After adjusting for age, GPPS data provided no evidence of a difference between heterosexual and lesbian or bisexual women (odds ratio [OR], 1.14; 95% CI, 0.94 to 1.37;  $P = .19$ ); however, gay or bisexual men were more likely to report cancer in the past 5 years than heterosexual men (OR, 1.31; 95% CI, 1.15 to 1.50;  $P < .001$ ), with evidence of a difference between gay (OR, 1.45; 95% CI, 1.24 to 1.69) and bisexual men (OR, 1.00; 95% CI, 0.78 to 1.30; Table 2).

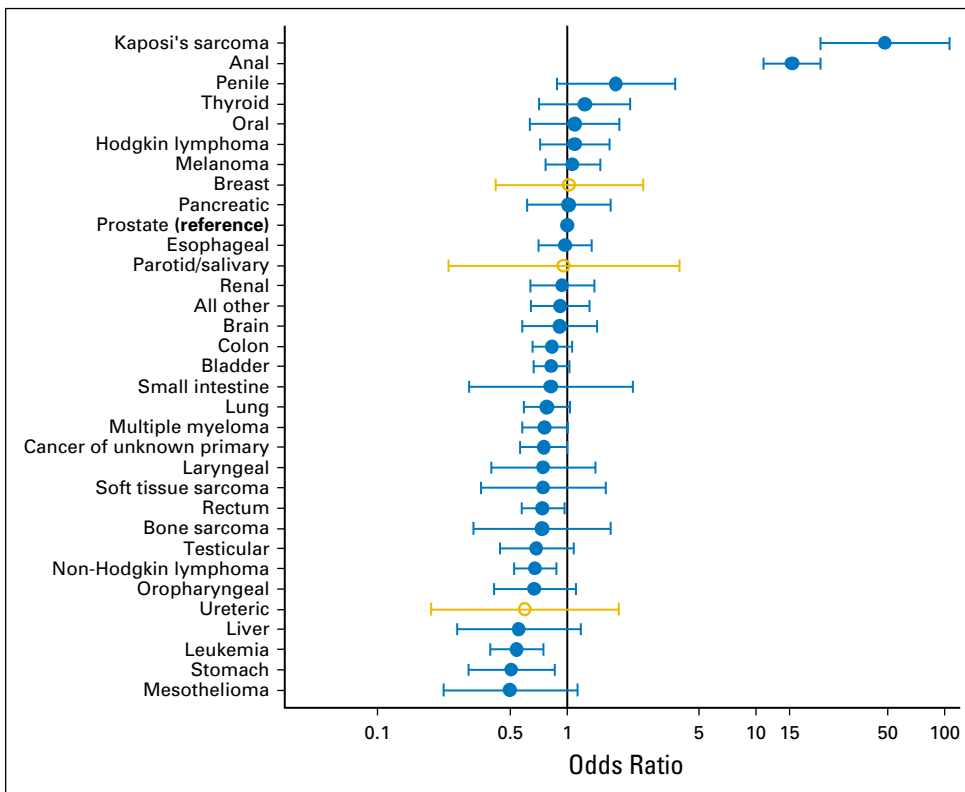
Although lesbian or bisexual women represented 0.7% of all female CPES responders (any cancer site), they represented 2.3% (adjusted, 2.1%) of women with oropharyngeal cancer, 2.0% (adjusted, 1.1%) with Hodgkin lymphoma, and 1.3% (adjusted, 0.7%) of women with cervical cancer. In the same way, although gay or bisexual men represented 1.1% of all male CPES responders (any cancer site), they made up 46.4% (adjusted, 35.4%) of men with Kaposi's sarcoma, 17.3% (adjusted, 15.7%) of men with anal cancer, 2.9% (adjusted, 1.4%) of men with Hodgkin lymphoma, 2.5% (adjusted, 0.9%) of men with testicular, and 2.5% (adjusted, 1.6%) thyroid cancers. Again, because endorsing a sexual minority orientation in the two surveys was more common in younger patients,<sup>23</sup> crude figures are confounded by age, with the crude proportions of men and women from sexual minorities

higher for cancer sites where diagnosis among young people is more common—for example, cervical and testicular cancer, and Hodgkin Lymphoma (Tables 1 and 3).

After adjusting for age, there continues to be statistical evidence that the proportion of people from sexual minorities varies between cancer sites (women,  $P = .0002$ ; men,  $P < .0001$ ). Whereas evidence for overall variation is statistically significant, the number of cases for many sites is small, which resulted in wide CIs (Figs 1 and 2). For most cancer sites that were examined in our adjusted analysis (30 of 33 in women, 28 of 32 in men), there was no evidence that sexual minorities were over- or under-represented compared with the most common cancers in each gender (female, breast; male, prostate); however, there were a few notable differences, including some infection-related (HIV or HPV) cancers. Lesbian/bisexual women are more frequently represented among women with oropharyngeal cancer (OR, 3.2; 95% CI, 1.7 to 6.0), and less frequently represented in anal (OR, 0.3; 95% CI, 0.0 to 2.0), and vulval/vaginal cancers (OR, 0.7; 95% CI, 0.2 to 2.1), although CIs are wide. Gay or bisexual men are relatively more frequently represented among men with Kaposi's sarcoma (OR, 48.2; 95% CI, 22.0 to 105.6), anal (OR, 15.5; 95% CI, 11.0 to 21.9), and penile cancer (OR, 1.8; 9% CI, 0.9 to 3.7). In addition, lesbian or bisexual women are more frequently represented among women with mesothelioma, stomach, and endometrial cancers, but less among liver and esophageal cancers. Gay or bisexual men are more frequently represented among men with thyroid and oral cancers, melanoma, and Hodgkin lymphoma, and are relatively less frequently represented in liver and stomach cancers, leukemia, and mesothelioma.



**Fig 1.** Odds ratios of specific cancer site diagnosis by lesbian or bisexual orientation among women with cancer, adjusted for age (Cancer Patient Experience Survey). Diagnoses represented with gold circles indicate fewer than six women with this diagnosis reporting lesbian or bisexual sexual identity (CPES); these diagnoses were included in the analysis model in the same way as other cancers, however the gold circles highlight that these results are based on relatively small numbers of cases.



**Fig 2.** Odds ratios of specific cancer site diagnosis by gay or bisexual orientation among men with cancer, adjusted for age.

In supplementary analyses, self-reported cancer prevalence among GPPS responders was lower among women with a missing response regarding their sexual orientation ( $P = .027$ ) and men who stated, “Prefer not to say” ( $P < .001$ ), with a small but significant (men,  $P = .0005$ ; women,  $P = .001$ ) variation in missing responses by cancer site, and “Prefer not to say” (men,  $P < .001$ ). Considering respondents who had been diagnosed only in the past year, findings were consistent with the main analyses of CPES responders. Variation in cancer diagnosis was also consistent when considering gay or lesbian and bisexual CPES responders separately (Appendix Tables A4 to A6, online only).

## DISCUSSION

We report large-scale evidence from two nationwide patient surveys in England, including information on self-reported sexual orientation, to explore whether women and men from sexual minorities report a cancer diagnosis in the previous 5 years more or less frequently than heterosexual women and men, and, among recently treated survivors of cancer, whether there is variation between cancer sites in the proportion of men and women who report gay, lesbian, or bisexual sexual orientation. We find that gay or bisexual men are more likely to have had cancer in the past 5 years than heterosexual men of the same age, although there was no evidence of a difference in cancer prevalence between heterosexual and lesbian or bisexual women. For both men and women, sexual orientation seems to be unrelated to the diagnosis of most cancer sites, particularly the more common cancers, but sexual minorities are over- or under-represented among patients of certain rarer

sites. Cancer sites associated with HPV—and HIV—infection are those with the greatest degree of variation in the proportion of men and women from sexual minorities.

Regarding cancer prevalence, against limited overall evidence, our findings are consistent with a single other similar source, which also found similar cancer prevalence among heterosexual and sexual minority women, but increased odds among gay and bisexual men compared with heterosexual men.<sup>35</sup> With regard to HPV-associated cancers, increased prevalence of anal cancer among gay men has been previously described<sup>36</sup>; however, to our knowledge, the relative over-representation of lesbian and bisexual women among women with oropharyngeal cancer has not previously been described and constitutes a novel finding. A history of performing oral sex is a known risk factor for oropharyngeal cancer.<sup>37</sup> Previous evidence indicates that there is a higher probability of HPV transmission via vaginal oral sex compared with penile oral sex,<sup>38,39</sup> which would result in a higher burden of oral HPV infection among lesbian and bisexual women.

Cervical cancer is associated with HPV infection, yet we do not find that lesbian or bisexual women are under-represented among women with cervical cancer. Our findings may be explained by a relatively low uptake of screening<sup>40-42</sup> plus an earlier initiation of sexual intercourse.<sup>43</sup> There have been inconsistent messages in the past about whether lesbian women need to attend cervical screening programs,<sup>20,40</sup> but our data do not suggest any reduced need.

There are also some unexpected differences in cancer diagnosis by sexual orientation, in particular, the excess risk of mesothelioma and stomach cancer in lesbian women. Here, our findings may add novel insights, although with the caution that

numbers are relatively low. Nonetheless, differences by sexual orientation among women with regard to occupational exposures, smoking (contributing to cancer risk across several sites), or dietary factors may be important, although this is speculative. The higher risk of endometrial cancer among lesbian or bisexual women is also surprising and is inconsistent with prior evidence.<sup>44</sup>

There are limitations that are inherent in all survey research, and, in this study, one such limitation is that the CPES analysis is based on treated patients, rather than population-based incident cases, and so rates cannot be estimated; however, our sensitivity analysis using only cases diagnosed in the last year—more similar to an incident population<sup>34</sup>—provided results that were consistent with the main analyses presented. Additional strengths of our study are its large analyses samples, the examination of both common and rare cancer sites, and the use of well-characterized national survey data.<sup>25,45-48</sup>

Although response rates for CPES are high (64% to 67%), response rates for GPPS were 37%; however, response rates alone are a poor indicator of bias.<sup>49</sup> In addition, a randomized controlled trial demonstrated no variation in GPPS response rates when a question about the sexual orientation of the participant was included or excluded; this does not exclude, but greatly mitigates, the potential for survey nonparticipation bias by sexual orientation.<sup>45</sup>

We acknowledge that some people who identify as lesbian, gay, or bisexual may be unwilling to acknowledge their identity in a survey<sup>50</sup>; increased homelessness among young lesbian, gay, and bisexual people in the United Kingdom may also lead to additional under-representation among survey responders.<sup>51</sup> In addition, item nonresponse is another concern, with people who do not respond to the sexual orientation question at all (in GPPS) possibly also being less likely to report any long-term conditions. People who report greater concerns about privacy are less likely to respond to sensitive demographic survey questions,<sup>52</sup> and it is likely that the same mechanism may apply in our study context.

Sexual orientation and sexual behavior are different constructs; in this work, we consider cancer diagnosis associated with sexual orientation, although we acknowledge that HPV infection-associated cancer risk is primarily related to sexual behavior. The survey instruments encompassed heterosexual, gay, lesbian, and bisexual orientation, which is consistent with survey questions that were developed and validated by the UK Office of National Statistics<sup>53</sup>

that, however, do not encompass all sexual orientation and gender identity groups.

HPV vaccination presents an important opportunity for cancer prevention.<sup>43</sup> In the United Kingdom, the current vaccination program covers girls age 12 to 13 years, and a recent pilot HPV vaccination schedule for men who have sex with men was rolled out in 2016.<sup>54</sup> Modeling work is still in progress to decide whether all boys should receive the vaccination at age 12 to 13 years alongside girls.<sup>55</sup> The research presented here provides additional epidemiologic evidence to inform decisions about the most equitable, effective, and cost-effective HPV vaccination schedules. Evidence from the United States suggests that HPV vaccination rates among lesbian women are low.<sup>56</sup> Our research provides additional evidence that should particularly support efforts to encourage vaccination among lesbian and bisexual women.

This work presents population-based evidence about cancer prevalence among men and women from sexual minorities and about the relative frequencies of people from sexual minorities with common and rarer cancer diagnoses among recently treated survivors of cancer. Demographic data on cancer among people from sexual minorities are scarce<sup>20</sup>; these findings begin to address this evidential need. Finally, our research also highlights the importance of HPV vaccination among gay, lesbian, and bisexual women and men.

#### AUTHORS' DISCLOSURES OF POTENTIAL CONFLICTS OF INTEREST

Disclosures provided by the authors are available with this article at [jco.org](http://jco.org).

#### AUTHOR CONTRIBUTIONS

**Conception and design:** Catherine L. Saunders  
**Collection and assembly of data:** Catherine L. Saunders, Gary A. Abel, Georgios Lyrtzopoulos  
**Data analysis and interpretation:** All authors  
**Manuscript writing:** All authors  
**Final approval of manuscript:** All authors  
**Accountable for all aspects of the work:** All authors

#### REFERENCES

- Boehmer U: Twenty years of public health research: Inclusion of lesbian, gay, bisexual, and transgender populations. *Am J Public Health* 92: 1125-1130, 2002
- Pakianathan M, Daley N, Hegazi A: Gay, bisexual, and other men who have sex with men: Time to end the fixation with HIV. *BMJ* 354:i4739, 2016 [Erratum: *BMJ* 355:i5598, 2016]
- LGBT Foundation: Beyond babies & breast cancer: Expanding our understanding of women's health needs. <https://lgbt.foundation/downloads/274>
- LGBT Foundation: The LGBT public health outcomes framework companion document. <https://lgbt.foundation/policy-research/PHOF/>

- Global Burden of Disease Cancer Collaboration; Fitzmaurice C, Allen C, Barber RM, et al: Global, regional, and national cancer incidence, mortality, years of life lost, years lived with disability, and disability-adjusted life-years for 32 cancer groups, 1990 to 2015: A systematic analysis for the global burden of disease study. *JAMA Oncol* 3:524-548, 2017
- Nuffield Trust: NHS spending on the top three disease categories in England <http://www.nuffieldtrust.org.uk/data-and-charts/nhs-spending-top-three-disease-categories-england>
- Parkin DM: 14. Cancers attributable to occupational exposures in the UK in 2010. *Br J Cancer* 105:S70-S72, 2011 (suppl 2)
- Parkin DM: 11. Cancers attributable to infection in the UK in 2010. *Br J Cancer* 105:S49-S56, 2011 (suppl 2)

- Parkin DM: 1. The fraction of cancer attributable to lifestyle and environmental factors in the UK in 2010. *Br J Cancer* 105:S2-S5, 2011 (suppl 2)
- Hagger-Johnson G, Taibjee R, Semlyen J, et al: Sexual orientation identity in relation to smoking history and alcohol use at age 18/19: Cross-sectional associations from the Longitudinal Study of Young People in England (LSYPE). *BMJ Open* 3:e002810, 2013
- Zaza S, Kann L, Barrios LC: Lesbian, gay, and bisexual adolescents: Population estimate and prevalence of health behaviors. *JAMA* 316:2355-2356, 2016
- Riman T, Persson I, Nilsson S: Hormonal aspects of epithelial ovarian cancer: Review of epidemiological evidence. *Clin Endocrinol (Oxf)* 49: 695-707, 1998

13. Dibble SL, Roberts SA, Robertson PA, et al: Risk factors for ovarian cancer: Lesbian and heterosexual women. *Oncol Nurs Forum* 29:E1-E7, 2002
14. Public Health England: HIV in the UK—Situation report 2015: Incidence, prevalence and prevention. [https://www.gov.uk/government/uploads/system/uploads/attachment\\_data/file/477702/HIV\\_in\\_the\\_UK\\_2015\\_report.pdf](https://www.gov.uk/government/uploads/system/uploads/attachment_data/file/477702/HIV_in_the_UK_2015_report.pdf)
15. Grulich AE, van Leeuwen MT, Falster MO, et al: Incidence of cancers in people with HIV/AIDS compared with immunosuppressed transplant recipients: A meta-analysis. *Lancet* 370:59-67, 2007
16. Oliveira Cobucci RN, Saconato H, Lima PH, et al: Comparative incidence of cancer in HIV/AIDS patients and transplant recipients. *Cancer Epidemiol* 36:e69-e73, 2012
17. Giuliano AR, Nyitray AG, Kreimer AR, et al: EUROGIN 2014 roadmap: Differences in human papillomavirus infection natural history, transmission and human papillomavirus-related cancer incidence by gender and anatomic site of infection. *Int J Cancer* 136:2752-2760, 2015
18. Institute of Medicine; Committee on Lesbian, Gay, Bisexual, and Transgender Health Issues and Research Gaps and Opportunities: *The Health of Lesbian, Gay, Bisexual, and Transgender People: Building a Foundation for Better Understanding*. Washington, DC, National Academies Press, 2011
19. Griggs J, Maingi S, Blinder V, et al: American Society of Clinical Oncology position statement: Strategies for reducing cancer health disparities among sexual and gender minority populations. *J Clin Oncol* 35:2203-2208, 2017
20. Macmillan Cancer Support: LGBT people with cancer: The emerging picture. <http://be.macmillan.org.uk/Downloads/CancerInformation/RichPicture/RP-LGBT-people-with-cancer.pdf>
21. Macmillan Cancer Support: No one overlooked: Experiences of LGBT people affected by cancer. <http://www.macmillan.org.uk/documents/aboutus/research/inclusionprojects/experiencesoflgbtpeople.pdf>
22. Ipsos MORI. Technical annex for the GP patient survey 2011–12. <http://gp-survey-production.s3.amazonaws.com/archive/2012/June/June%202012%20Technical%20Annex.pdf>
23. Elliott MN, Kanouse DE, Burkhart Q, et al: Sexual minorities in England have poorer health and worse health care experiences: A national survey. *J Gen Intern Med* 30:9-16, 2015
24. Urwin S, Whittaker W: Inequalities in family practitioner use by sexual orientation: Evidence from the English General Practice Patient Survey. *BMJ Open* 6:e011633, 2016
25. Abel GA, Saunders CL, Lyratzopoulos G: Post-sampling mortality and non-response patterns in the English Cancer Patient Experience Survey: Implications for epidemiological studies based on surveys of cancer patients. *Cancer Epidemiol* 41:34-41, 2016
26. Department of Health: National Cancer Patient Experience Survey, 2010. London, UK, UK Data Service. SN, 2011
27. Department of Health: National Cancer Patient Experience Survey, 2011-2012. London, UK, UK Data Service. SN, 2012
28. Department of Health: National Cancer Patient Experience Survey, 2012-2013. London, UK, UK Data Service. SN, 2013
29. Department of Health: National Cancer Patient Experience Survey, 2013-2014. London, UK, UK Data Service. SN, 2014
30. NHS Health Research Authority: Does my project require review by a Research Ethics Committee? <http://www.hra.nhs.uk/documents/2013/09/does-my-project-require-rec-review.pdf>
31. Government Statistical Service: GSS/GSR disclosure control guidance for tables produced from surveys. <https://gss.civilservice.gov.uk/wp-content/uploads/2014/11/Guidance-for-tables-produced-from-administrative-sources.pdf>
32. Mendonca SC, Abel GA, Lyratzopoulos G: Pre-referral GP consultations in patients subsequently diagnosed with rarer cancers: A study of patient-reported data. *Br J Gen Pract* 66:e171-e181, 2016
33. Department for Communities and Local Government: Official Statistics: English indices of deprivation. <https://www.gov.uk/government/statistics/english-indices-of-deprivation-2010>
34. Lyratzopoulos G, Neal RD, Barbieri JM, et al: Variation in number of general practitioner consultations before hospital referral for cancer: Findings from the 2010 National Cancer Patient Experience Survey in England. *Lancet Oncol* 13:353-365, 2012
35. Boehmer U, Miao X, Ozonoff A: Cancer survivorship and sexual orientation. *Cancer* 117:3796-3804, 2011
36. Daling JR, Weiss NS, Hislop TG, et al: Sexual practices, sexually transmitted diseases, and the incidence of anal cancer. *N Engl J Med* 317:973-977, 1987
37. Schnelle C, Whiteman DC, Porceddu SV, et al: Past sexual behaviors and risks of oropharyngeal squamous cell carcinoma: A case-case comparison. *Int J Cancer* 140:1027-1034, 2017
38. Gillison ML, Broutian T, Pickard RK, et al: Prevalence of oral HPV infection in the United States, 2009-2010. *JAMA* 307:693-703, 2012
39. Hernandez BY, Wilkens LR, Zhu X, et al: Transmission of human papillomavirus in heterosexual couples. *Emerg Infect Dis* 14:888-894, 2008
40. Bailey JV, Kavanagh J, Owen C, et al: Lesbians and cervical screening. *Br J Gen Pract* 50:481-482, 2000
41. McElroy JA, Wintemberg JJ, Williams A: Comparison of lesbian and bisexual women to heterosexual women's screening prevalence for breast, cervical, and colorectal cancer in Missouri. *LGBT Health* 2:188-192, 2015
42. Waterman L, Voss J: HPV, cervical cancer risks, and barriers to care for lesbian women. *Nurse Pract* 40:46-53, quiz 53-54, 2015
43. Hodson K, Meads C, Bewley S: Lesbian and bisexual women's likelihood of becoming pregnant: A systematic review. *BJOG* 124:393-402, 2017
44. Robinson C, Galloway KY, Bewley S, et al: Lesbian and bisexual women's gynaecological conditions: A systematic review. *BJOG* 124:381-392, 2017
45. Campbell J, Smith P, Nissen S, et al: The GP Patient Survey for use in primary care in the National Health Service in the UK—Development and psychometric characteristics. *BMC Fam Pract* 10:57, 2009
46. Public Health England: Linkage of the English Cancer Patient Experience Survey to cancer registration data: National Cancer Intelligence Network data briefing. <http://www.ncin.org.uk/view?rid=3036>
47. Public Health England: English National Cancer Patient Experience Surveys linked to cancer registration data: A descriptive overview of respondents' characteristics. <http://www.ncin.org.uk/view?rid=3064>
48. Roland M, Elliott M, Lyratzopoulos G, et al: Reliability of patient responses in pay for performance schemes: Analysis of national General Practitioner Patient Survey data in England. *BMJ* 339:b3851, 2009
49. Groves RM, Peytcheva E: The impact of nonresponse rates on nonresponse bias—A meta-analysis. *Public Opin Q* 72:167-189, 2008
50. Turner CF, Ku L, Rogers SM, et al: Adolescent sexual behavior, drug use, and violence: Increased reporting with computer survey technology. *Science* 280:867-873, 1998
51. The Albert Kennedy Trust: LGBT youth homelessness. [http://www.akt.org.uk/webtop/modules/\\_repository/documents/AlbertKennedy\\_researchreport\\_FINALInteractive.pdf](http://www.akt.org.uk/webtop/modules/_repository/documents/AlbertKennedy_researchreport_FINALInteractive.pdf)
52. Patil S, Lu H, Saunders CL, et al: Public preferences for electronic health data storage, access, and sharing—Evidence from a pan-European survey. *J Am Med Inform Assoc* 23:1096-1106, 2016
53. NHS England: Monitoring equality and health inequalities: A position paper. <https://www.england.nhs.uk/wp-content/uploads/2015/03/monitrg-ehi-pos-paper.pdf>
54. Department of Health: HPV vaccination: Written statement—HCWS17. <http://www.parliament.uk/written-questions-answers-statements/written-statement/Commons/2016-05-26/HCWS17>. 2016
55. Terrence Higgins Trust: HPV pilot is 'stalling tactic' and will delay a national vaccination programme for all MSM. <http://www.tht.org.uk/our-charity/Media-centre/Press-Releases/2016/May/HPV-pilot-is-%E2%80%98stalling-tactic%E2%80%99-and-will-delay-a-national-vaccination-programme-for-all-MSM>
56. McRee AL, Katz ML, Paskett ED, et al: HPV vaccination among lesbian and bisexual women: Findings from a national survey of young adults. *Vaccine* 32:4736-4742, 2014

### Affiliations

Catherine L. Saunders and Georgios Lyratzopoulos, Cambridge Centre for Health Services Research, University of Cambridge; Catherine Meads, Anglia Ruskin University, Cambridge; Gary A. Abel, University of Exeter Medical School, Exeter; and Georgios Lyratzopoulos University College London, London, United Kingdom.

### Support

G.L. is supported by a Cancer Research UK Advanced Clinician Scientist Fellowship (C18081/A18180).



**AUTHORS' DISCLOSURES OF POTENTIAL CONFLICTS OF INTEREST**

**Associations Between Sexual Orientation and Overall and Site-Specific Diagnosis of Cancer: Evidence From Two National Patient Surveys in England**

*The following represents disclosure information provided by authors of this manuscript. All relationships are considered compensated. Relationships are self-held unless noted. I = Immediate Family Member, Inst = My Institution. Relationships may not relate to the subject matter of this manuscript. For more information about ASCO's conflict of interest policy, please refer to [www.asco.org/rwc](http://www.asco.org/rwc) or [ascopubs.org/jco/site/ifc](http://ascopubs.org/jco/site/ifc).*

**Catherine L. Saunders**

No relationship to disclose

**Catherine Meads**

No relationship to disclose

**Gary A. Abel**

No relationship to disclose

**Georgios Lyratzopoulos**

No relationship to disclose

## Appendix

### Appendix Tables A1 to A3

In the main analyses presented in this article, we adjust only for age as a categorical variable. We also consider as possible confounders race and ethnicity, an additional age term, socioeconomic inequalities, survey wave (year), and hospital/general practice of treatment. As including these variables did not change the magnitude of the effect sizes of the association between sexual orientation and cancer diagnosis—results presented in Appendix Table A1 for General Practice Patient Survey (GPPS) and Appendix Tables A2 and A3 for Cancer Patient Experience Survey (CPES)—we did not include them in the final analysis models, which were presented only adjusted for age and stratified by sex. In addition, including additional covariates in our analysis models led to issues with smaller sample sizes—deprivation and ethnicity information is missing for some respondents—and issues of perfect prediction for some rarer cancer site diagnoses. Although the final analysis models are therefore parsimonious, unmeasured confounding is not expected to be a major concern.

The only coefficient that does change is that for Kaposi's sarcoma in men after adjusting for hospital (reduction from 48.5 to 19.2; Appendix Table A3). Even after adjustment, this remains the cancer diagnosis with the strongest association with sexual orientation, and reflects the fact that patients with Kaposi's sarcoma were only treated in a small number of hospitals overall, rather than more general confounding by region, and do not change the overall conclusions of this work. As we are interested in population-level estimates, rather than within-hospital estimates, in this analysis, we did not include this random effect in the final model.

### Appendix Tables A4 to A6

Survey questions were used to identify respondents' sexual orientation in both surveys. In GPPS, "Which of the following best describes how you think of yourself?" had the following possible responses: "Heterosexual/straight," "Gay/Lesbian," "Bisexual," "Other," or "I would prefer not to say." In CPES, "Which of the following best describes your sexual orientation?" had the following possible responses: "Heterosexual/straight (opposite sex)," "Bisexual (both sexes)," "Gay or Lesbian (same sex)," "Other," or "Prefer not to answer." To explore the sensitivity of our findings to different response options, we investigated the associations between each of the sexual orientation response options and the overall and site-specific diagnoses of cancer in a series of analyses. In particular, in the CPES analyses, the models for which the responses, "Bisexual" and "Gay" or "Lesbian," are not grouped are consistent with the main analyses presented here, although CIs are wider, and variability in effect sizes are likely to reflect this imprecision.

### Appendix Table A5

Results from the main analysis model (presented in Fig 1) are presented in column 1 in this table. Additional analyses explore whether there is any variation between cancer sites in the proportion of women who report "Other" or "Prefer not to say" sexual orientation, or who do not respond to this question at all, and can be compared with the findings from the main model. Although there is evidence that the proportion of women who did not respond to the sexual orientation question varies between cancer sites, the magnitude of these differences are small (all odds ratios are close to 1), particularly compared with the variation in the main model.

### Appendix Table A6

Although from these analyses there is evidence that the proportion of men who responded with the "Prefer not to say" option or who did not respond to the sexual orientation question varies between cancer sites, the magnitude of these differences are small (all odds ratios are close to 1), particularly compared with the variation in the main model. Men with anal cancer have 2.4 times greater odds of giving a "Prefer not to say" response to the survey question about sexual identity than men with prostate cancer, and men with Kaposi's sarcoma have 11.0 times greater odds of giving a "Prefer not to say" response. Clearly, there is some increased use of the "Prefer not to say" option among gay or bisexual men with these diagnoses, but it is not possible to determine the extent to which this option is used more frequently by all gay or bisexual men, or whether this is particularly related to these diagnoses that perhaps have greater stigma attached.

### Appendix Tables A7 and A8

These tables present details of the sample derivation and clinical coding of cancer sites used in the main analysis.

### **Notes to Support the Comparison of Results From Tables 1 to 3**

In [Table 2](#), this analysis uses data from the GPPS to answer the research question, “Do women and men from sexual minorities report a cancer diagnosis in the previous 5 years more or less frequently than heterosexual women and men?”

In [Tables 1](#) and [3](#), the CPES is used to explore the question, “Among recently treated survivors of cancer, is there variation between cancer sites in the proportion of men and women who report gay, lesbian, or bisexual sexual orientation?”

GPPS data are a population-based sample of the population of England, and we can therefore estimate cancer prevalence among men and women from sexual minorities—with and without cancer in the past 5 years—and compare this with people who report a heterosexual sexual orientation. This is a unique data source, as the large sample size—nearly 1 million people—and the availability of sampling and design weights allow us to estimate cancer prevalence in the last 5 years in England, stratified by sexual orientation, then adjusted for age. These results are presented in [Table 2](#).

CPES data are also a unique survey resource of recently treated survivors of cancer, sent annually to all patients age  $\geq 16$  years. The strengths of this data resource are the large number of people with cancer—249,010 patients, including 920 lesbian or bisexual women and 1,279 gay or bisexual men (these numbers of people from sexual minorities with cancer are much higher compared with the population-based GPPS sample, which includes both people with and without cancer—and the availability of specific International Classification of Diseases, Tenth Revision, diagnosis codes, which are not available for the GPPS data; however, the two limitations in the CPES data are, first, the sample is hospital based, rather than population based (recently treated survivors of cancer), and, second, that we do not have a comparison population of people without cancer. This means that we cannot estimate cancer prevalence by using the CPES data. Instead, it is possible to estimate whether there is variation between cancer sites in the proportion of men and women who report gay, lesbian, or bisexual sexual orientation by using a case-only analysis.

These proportions allow us to explore whether people from sexual minorities are relatively over- or under-represented among people with a particular cancer diagnosis compared with baseline diagnosis—that is, are there more people from sexual minorities with a particular cancer site diagnosis than would be expected were there no variation between sites? This over- or under-representation will reflect higher or lower incidence, or higher or lower survival, among people from sexual minorities, but incidence and prevalence cannot be measured directly, and the comparison is therefore between cancer sites, rather than with people without cancer.

In practical terms, this means for the analysis that results in [Tables 1](#) to [3](#) are complementary but not directly comparable, as the populations and the analyses are different. In [Table 2](#), results tell us about cancer prevalence in the whole population of England (age  $\geq 18$  years)—that prevalence is higher among gay or bisexual men, but not among lesbian or bisexual women. In [Tables 1](#) and [3](#), results tell us about variation between cancer sites, but not about comparisons with the whole population.

**Overall and Site-Specific Diagnosis of Cancer Among Sexual Minorities**

**Table A1.** Exploration of Potential Confounders in the Relationship Between Cancer Prevalence and Sexual Orientation (General Practice Patient Survey)

Variable	Sexual Orientation	OR for Reporting Cancer in the Last 5 Years (95% CI)	P
<b>Women</b>			
Unadjusted	Heterosexual	Reference	< .001
	Lesbian/bisexual	0.64 (0.53 to 0.77)	
Adjusted for age	Heterosexual	Reference	.19
	Lesbian/bisexual	1.14 (0.94 to 1.38)	
Adjusted for deprivation (n = 445,185)	Heterosexual	Reference	.17
	Lesbian/bisexual	1.14 (0.95 to 1.38)	
Adjusted for age only (on deprivation sample for comparison)	Heterosexual	Reference	.18
	Lesbian/bisexual	1.14 (0.94 to 1.38)	
Adjusted for ethnicity (n = 442,818)	Heterosexual	Reference	.14
	Lesbian/bisexual	1.15 (0.95 to 1.40)	
Adjusted for age only (on deprivation sample for comparison)	Heterosexual	Reference	.17
	Lesbian/bisexual	1.14 (0.95 to 1.38)	
Adjusted for region/GP practice	Heterosexual	Reference	.19
	Lesbian/bisexual	1.14 (0.94 to 1.37)	
<b>Men</b>			
Unadjusted	Heterosexual	Reference	< .001
	Gay/bisexual	0.71 (0.62 to 0.80)	
Adjusted for age	Heterosexual	reference	< .001
	Gay/bisexual	1.31 (1.15 to 1.49)	
Adjusted for deprivation (n = 445,185)	Heterosexual	Reference	< .001
	Gay/bisexual	1.33 (1.17 to 1.51)	
Adjusted for age only (on deprivation sample for comparison)	Heterosexual	Reference	< .001
	Gay/bisexual	1.31 (0.15 to 1.50)	
Adjusted for ethnicity (n = 442,818)	Heterosexual	Reference	< .001
	Gay/bisexual	1.30 (0.13 to 1.48)	
Adjusted for age only (on deprivation sample for comparison)	Heterosexual	Reference	< .001
	Gay/bisexual	1.29 (0.13 to 1.47)	
Adjusted for region/GP practice	Heterosexual	Reference	< .001
	Gay/bisexual	1.31 (1.15 to 1.49)	

Abbreviations: GP, general practice; OR, odds ratio.

**Table A2.** Exploration of Potential Confounders on the Odds Ratios of Specific Cancer Site Diagnosis by Lesbian/Bisexual Orientation Among Women With Cancer (Cancer Patient Experience Survey)

Diagnosis	Model Without Adjustment for Age	Main Model (adjusted only for age as a categorical variable)	Model Adjusted for Linear Age	Model Adjusted for Ethnicity	Main Model (on sample for comparison with ethnicity adjusted model)	Model Adjusted for Deprivation	Main Model (on sample for comparison with deprivation adjusted model)	Model Adjusted for Survey Year	Model Additionally Adjusted for Hospital/Region With a Random Effect for Organization
No.	130,953 920	130,953 920	130,953 920	129,035 901	129,035 901	96,094 696	96,094 696	130,953 920	130,953 920
Model outcome, No.	130,953 920	130,953 920	130,953 920	129,035 901	129,035 901	96,094 696	96,094 696	130,953 920	130,953 920
<i>P</i> , joint test, cancer	< .001	< .001	.001	< .001	< .001	.003	.001	.001	< .001
Oropharyngeal	2.95 (1.56 to 5.57)	3.19 (1.69 to 6.04)	3.21 (1.70 to 6.08)	3.22 (1.70 to 6.10)	3.23 (1.71 to 6.12)	3.20 (1.56 to 6.54)	3.45 (1.69 to 7.04)	3.20 (1.69 to 6.06)	3.08 (1.62 to 5.85)
Oral	0.89 (0.33 to 2.39)	1.17 (0.43 to 3.15)	1.18 (0.44 to 3.17)	1.21 (0.45 to 3.26)	1.21 (0.45 to 3.25)	0.75 (0.18 to 3.02)	0.78 (0.19 to 3.15)	1.16 (0.43 to 3.13)	1.13 (0.42 to 3.05)
Esophageal	0.29 (0.09 to 0.89)	0.52 (0.16 to 1.61)	0.53 (0.17 to 1.65)	0.35 (0.09 to 1.42)	0.36 (0.09 to 1.43)	0.67 (0.21 to 2.09)	0.69 (0.22 to 2.16)	0.52 (0.17 to 1.63)	0.51 (0.16 to 1.61)
Stomach	1.33 (0.71 to 2.51)	2.25 (1.19 to 4.25)	2.29 (1.21 to 4.32)	2.36 (1.25 to 4.47)	2.34 (1.24 to 4.43)	1.75 (0.77 to 3.96)	1.84 (0.81 to 4.16)	2.27 (1.20 to 4.28)	2.19 (1.16 to 4.15)
Small intestine	0.51 (0.07 to 3.66)	0.72 (0.10 to 5.14)	0.73 (0.10 to 5.21)	0.71 (0.10 to 5.09)	0.74 (0.10 to 5.27)	1.07 (0.15 to 7.67)	1.06 (0.15 to 7.60)	0.73 (0.10 to 5.20)	0.69 (0.10 to 4.96)
Colon	0.48 (0.33 to 0.70)	0.79 (0.54 to 1.16)	0.81 (0.55 to 1.19)	0.80 (0.54 to 1.18)	0.80 (0.54 to 1.17)	0.84 (0.55 to 1.29)	0.85 (0.55 to 1.31)	0.79 (0.54 to 1.16)	0.79 (0.54 to 1.16)
Rectal	0.44 (0.26 to 0.74)	0.65 (0.38 to 1.09)	0.65 (0.39 to 1.10)	0.67 (0.40 to 1.12)	0.67 (0.40 to 1.12)	0.63 (0.34 to 1.15)	0.64 (0.35 to 1.17)	0.65 (0.39 to 1.09)	0.64 (0.38 to 1.08)
Anal	0.22 (0.03 to 1.58)	0.29 (0.04 to 2.04)	0.29 (0.04 to 2.07)	0.29 (0.04 to 2.10)	0.29 (0.04 to 2.10)	0.55 (0.08 to 3.96)	0.58 (0.08 to 4.14)	0.29 (0.04 to 2.05)	0.29 (0.04 to 2.04)
Liver	0.29 (0.04 to 2.04)	0.43 (0.06 to 3.08)	0.44 (0.06 to 3.11)	0.29 (0.04 to 2.10)	0.29 (0.04 to 2.10)	0.55 (0.08 to 3.96)	0.58 (0.08 to 4.14)	0.44 (0.06 to 3.12)	0.39 (0.05 to 2.78)
Gallbladder	1.18 (0.16 to 8.50)	2.03 (0.28 to 14.69)	2.08 (0.29 to 15.02)	2.18 (0.30 to 15.79)	2.08 (0.29 to 15.08)	1.53 (0.68 to 3.45)	1.55 (0.69 to 3.51)	2.01 (0.28 to 14.52)	2.01 (0.28 to 14.58)
Pancreatic	1.06 (0.55 to 2.06)	1.68 (0.86 to 3.28)	1.71 (0.88 to 3.33)	1.73 (0.89 to 3.36)	1.74 (0.89 to 3.38)	1.53 (0.68 to 3.45)	1.55 (0.69 to 3.51)	1.68 (0.86 to 3.28)	1.63 (0.83 to 3.18)
Laryngeal	0.64 (0.09 to 4.55)	1.02 (0.14 to 7.30)	1.04 (0.14 to 7.44)	1.04 (0.15 to 7.48)	1.05 (0.15 to 7.52)	1.26 (0.17 to 9.01)	1.43 (0.20 to 10.28)	1.02 (0.14 to 7.30)	1.02 (0.14 to 7.33)
Lung	0.64 (0.44 to 0.93)	1.08 (0.74 to 1.57)	1.10 (0.76 to 1.61)	1.04 (0.71 to 1.54)	1.04 (0.71 to 1.54)	1.19 (0.79 to 1.78)	1.29 (0.87 to 1.93)	1.08 (0.74 to 1.58)	1.06 (0.73 to 1.55)
Bone sarcoma	1.51 (0.48 to 4.74)	1.21 (0.38 to 3.86)	1.18 (0.37 to 3.77)	1.31 (0.41 to 4.18)	1.28 (0.40 to 4.07)	1.80 (0.56 to 5.78)	1.75 (0.55 to 5.64)	1.21 (0.38 to 3.86)	1.16 (0.36 to 3.72)
Melanoma	0.85 (0.54 to 1.33)	0.91 (0.58 to 1.43)	0.91 (0.58 to 1.43)	0.91 (0.58 to 1.43)	0.92 (0.59 to 1.45)	0.97 (0.57 to 1.64)	0.94 (0.56 to 1.59)	0.90 (0.57 to 1.41)	0.89 (0.57 to 1.41)
Mesothelioma	2.01 (0.74 to 5.42)	3.79 (1.40 to 10.31)	3.90 (1.44 to 10.60)	2.95 (0.93 to 9.30)	2.94 (0.93 to 9.26)	3.73 (1.17 to 11.82)	3.62 (1.14 to 11.48)	3.79 (1.39 to 10.28)	3.47 (1.27 to 9.49)
Soft tissue sarcoma	0.57 (0.14 to 2.30)	0.58 (0.14 to 2.35)	0.58 (0.14 to 2.33)	0.59 (0.15 to 2.38)	0.60 (0.15 to 2.41)	0.81 (0.20 to 3.29)	0.82 (0.20 to 3.32)	0.58 (0.14 to 2.35)	0.58 (0.14 to 2.35)
Breast	Reference	Reference	Reference	Reference	Reference	Reference	Reference	Reference	Reference
Vulval/vaginal	0.47 (0.15 to 1.45)	0.67 (0.21 to 2.10)	0.68 (0.22 to 2.12)	0.69 (0.22 to 2.16)	0.69 (0.22 to 2.15)	0.57 (0.14 to 2.31)	0.61 (0.15 to 2.47)	0.68 (0.22 to 2.12)	0.65 (0.21 to 2.04)
Cervical	1.65 (1.04 to 2.63)	1.13 (0.70 to 1.80)	1.10 (0.68 to 1.76)	1.12 (0.70 to 1.80)	1.14 (0.71 to 1.83)	1.23 (0.72 to 2.09)	1.28 (0.75 to 2.19)	1.13 (0.70 to 1.81)	1.11 (0.69 to 1.79)
Endometrial	1.28 (0.95 to 1.71)	2.04 (1.52 to 2.74)	2.08 (1.54 to 2.79)	2.00 (1.48 to 2.71)	1.99 (1.47 to 2.69)	2.08 (1.49 to 2.90)	2.14 (1.53 to 3.00)	2.04 (1.52 to 2.74)	2.00 (1.49 to 2.70)
Ovarian	0.93 (0.68 to 1.26)	1.25 (0.92 to 1.70)	1.26 (0.93 to 1.71)	1.26 (0.92 to 1.72)	1.26 (0.92 to 1.72)	1.21 (0.85 to 1.74)	1.23 (0.86 to 1.76)	1.25 (0.92 to 1.70)	1.22 (0.90 to 1.66)
Renal	0.54 (0.22 to 1.30)	0.77 (0.32 to 1.88)	0.78 (0.32 to 1.89)	0.79 (0.33 to 1.92)	0.79 (0.33 to 1.93)	1.02 (0.42 to 2.47)	1.07 (0.44 to 2.60)	0.78 (0.32 to 1.88)	0.75 (0.31 to 1.81)
Ureteric	0.93 (0.23 to 3.75)	2.14 (0.53 to 8.67)	2.21 (0.54 to 8.96)	2.22 (0.55 to 9.00)	2.23 (0.55 to 9.04)	2.89 (0.71 to 11.80)	3.07 (0.75 to 12.55)	2.14 (0.53 to 8.70)	2.13 (0.52 to 8.66)
Bladder	0.61 (0.39 to 0.93)	1.29 (0.83 to 2.00)	1.32 (0.85 to 2.05)	1.34 (0.86 to 2.08)	1.35 (0.87 to 2.09)	1.20 (0.71 to 2.04)	1.25 (0.74 to 2.13)	1.31 (0.84 to 2.03)	1.28 (0.82 to 1.98)
Brain	1.09 (0.48 to 2.44)	0.80 (0.35 to 1.80)	0.78 (0.35 to 1.77)	0.81 (0.36 to 1.84)	0.82 (0.36 to 1.84)	0.73 (0.27 to 1.97)	0.73 (0.27 to 1.98)	0.79 (0.35 to 1.79)	0.77 (0.34 to 1.75)
Thyroid	1.26 (0.73 to 2.20)	0.93 (0.53 to 1.63)	0.91 (0.52 to 1.60)	0.96 (0.55 to 1.69)	0.95 (0.54 to 1.67)	0.76 (0.37 to 1.56)	0.79 (0.39 to 1.61)	0.93 (0.53 to 1.62)	0.89 (0.51 to 1.56)
Cancer of unknown primary	0.75 (0.57 to 0.98)	0.96 (0.73 to 1.26)	0.97 (0.74 to 1.27)	0.97 (0.74 to 1.28)	0.97 (0.74 to 1.28)	1.03 (0.76 to 1.40)	1.02 (0.75 to 1.38)	0.96 (0.73 to 1.26)	0.93 (0.71 to 1.23)
Hodgkin lymphoma	2.57 (1.60 to 4.15)	1.63 (0.99 to 2.70)	1.59 (0.96 to 2.62)	1.66 (1.00 to 2.74)	1.69 (1.02 to 2.79)	1.94 (1.11 to 3.37)	1.95 (1.12 to 3.39)	1.63 (0.99 to 2.70)	1.61 (0.97 to 2.66)
Non-Hodgkin lymphoma	0.93 (0.70 to 1.24)	1.36 (1.02 to 1.82)	1.37 (1.03 to 1.84)	1.38 (1.03 to 1.85)	1.38 (1.03 to 1.85)	1.33 (0.95 to 1.87)	1.34 (0.96 to 1.89)	1.36 (1.02 to 1.82)	1.35 (1.01 to 1.80)
Multiple myeloma	0.58 (0.38 to 0.88)	1.03 (0.68 to 1.56)	1.04 (0.69 to 1.59)	1.08 (0.71 to 1.65)	1.07 (0.70 to 1.62)	0.90 (0.54 to 1.50)	0.91 (0.55 to 1.51)	1.02 (0.67 to 1.55)	0.99 (0.65 to 1.50)
Leukemia	0.97 (0.65 to 1.45)	1.17 (0.78 to 1.75)	1.17 (0.78 to 1.75)	1.20 (0.80 to 1.81)	1.20 (0.80 to 1.81)	1.32 (0.85 to 2.05)	1.33 (0.86 to 2.07)	1.17 (0.78 to 1.76)	1.12 (0.74 to 1.68)
Ductal carcinoma in situ	0.76 (0.49 to 1.20)	0.82 (0.52 to 1.29)	0.83 (0.53 to 1.30)	0.84 (0.53 to 1.31)	0.84 (0.53 to 1.31)	0.71 (0.41 to 1.25)	0.71 (0.41 to 1.24)	0.81 (0.52 to 1.28)	0.81 (0.51 to 1.27)
All other	1.00 (0.65 to 1.54)	1.41 (0.91 to 2.17)	1.42 (0.92 to 2.19)	1.45 (0.94 to 2.24)	1.45 (0.94 to 2.24)	1.58 (0.99 to 2.52)	1.60 (1.00 to 2.56)	1.40 (0.91 to 2.16)	1.35 (0.87 to 2.08)

NOTE: Data are presented as odds ratio (95% CI), unless otherwise noted.

Overall and Site-Specific Diagnosis of Cancer Among Sexual Minorities

**Table A3.** Exploration of Potential Confounders on the Odds Ratios of Specific Cancer Site Diagnosis by Gay/Bisexual Orientation Among Men With Cancer (Cancer Patient Experience Survey)

Diagnosis	Model Adjustment for Age	Main Model (adjusted only for age as a categorical variable)	Model Additionally Adjusted for Linear Age	Model Additionally Adjusted for Ethnicity	Main Model (on sample for comparison with ethnicity adjusted model)	Model Adjusted for Deprivation	Main Model (on sample for comparison with deprivation adjusted model)	Model Additionally Adjusted for Survey Year	Model Additionally Adjusted for Hospital/Region With a Random Effect for Organization
No.	117,877	117,877	117,877	116,325	116,325	86,575	86,575	117,877	117,877
Model outcome, No.	1,279	1,279	1,279	1,246	1,246	921	921	1,279	1,279
P, joint test, cancer	< .001	< .001	< .001	< .001	< .001	< .001	< .001	< .001	< .001
Oropharyngeal	1.13 (0.69 to 1.13)	0.68 (0.41 to 0.68)	0.67 (0.41 to 0.67)	0.67 (0.41 to 0.67)	0.67 (0.41 to 0.67)	0.66 (0.37 to 0.66)	0.70 (0.39 to 0.70)	0.68 (0.41 to 0.68)	0.72 (0.44 to 0.72)
Oral	1.59 (0.92 to 1.59)	1.10 (0.64 to 1.10)	1.08 (0.62 to 1.08)	1.09 (0.63 to 1.09)	1.11 (0.64 to 1.11)	1.04 (0.56 to 1.04)	1.15 (0.62 to 1.15)	1.10 (0.64 to 1.10)	1.14 (0.66 to 1.14)
Parotid/salivary	1.23 (0.30 to 1.23)	0.97 (0.24 to 0.97)	0.97 (0.24 to 0.97)	0.98 (0.24 to 0.98)	0.98 (0.24 to 0.98)	0.64 (0.09 to 0.64)	0.67 (0.09 to 0.67)	0.97 (0.24 to 0.97)	1.07 (0.26 to 1.07)
Esophageal	1.09 (0.79 to 1.09)	0.98 (0.71 to 0.98)	0.98 (0.70 to 0.98)	0.96 (0.69 to 0.96)	0.96 (0.69 to 0.96)	0.98 (0.68 to 0.98)	1.04 (0.72 to 1.04)	0.98 (0.71 to 0.98)	1.04 (0.75 to 1.04)
Stomach	0.55 (0.32 to 0.55)	0.51 (0.30 to 0.51)	0.51 (0.30 to 0.51)	0.52 (0.31 to 0.52)	0.52 (0.31 to 0.52)	0.52 (0.29 to 0.52)	0.55 (0.31 to 0.55)	0.51 (0.30 to 0.51)	0.54 (0.32 to 0.54)
Small intestine	1.06 (0.39 to 1.06)	0.82 (0.30 to 0.82)	0.82 (0.30 to 0.82)	0.82 (0.30 to 0.82)	0.82 (0.30 to 0.82)	0.76 (0.24 to 0.76)	0.77 (0.24 to 0.77)	0.83 (0.31 to 0.83)	0.81 (0.30 to 0.81)
Colon	0.91 (0.72 to 0.91)	0.84 (0.66 to 0.84)	0.84 (0.66 to 0.84)	0.82 (0.64 to 0.82)	0.82 (0.65 to 0.82)	0.84 (0.64 to 0.84)	0.86 (0.65 to 0.86)	0.84 (0.66 to 0.84)	0.92 (0.72 to 0.92)
Rectal	0.87 (0.67 to 0.87)	0.75 (0.57 to 0.75)	0.74 (0.57 to 0.74)	0.75 (0.57 to 0.75)	0.75 (0.57 to 0.75)	0.71 (0.52 to 0.71)	0.73 (0.53 to 0.73)	0.75 (0.58 to 0.75)	0.83 (0.64 to 0.83)
Anal	19.15 (13.66 to 19.15)	15.52 (10.97 to 15.52)	15.40 (10.89 to 15.40)	15.76 (11.12 to 15.76)	15.72 (11.10 to 15.72)	12.52 (8.27 to 12.52)	13.76 (9.13 to 13.76)	15.59 (11.02 to 15.59)	15.64 (10.92 to 15.64)
Liver	0.64 (0.30 to 0.64)	0.56 (0.26 to 0.56)	0.56 (0.26 to 0.56)	0.56 (0.26 to 0.56)	0.57 (0.27 to 0.57)	0.31 (0.10 to 0.31)	0.33 (0.11 to 0.33)	0.56 (0.26 to 0.56)	0.45 (0.21 to 0.45)
Pancreatic	1.21 (0.73 to 1.21)	1.02 (0.61 to 1.02)	1.02 (0.61 to 1.02)	0.96 (0.57 to 0.96)	0.97 (0.57 to 0.97)	0.94 (0.51 to 0.94)	0.95 (0.51 to 0.95)	1.03 (0.62 to 1.03)	0.99 (0.59 to 0.99)
Laryngeal	0.90 (0.48 to 0.90)	0.75 (0.40 to 0.75)	0.75 (0.40 to 0.75)	0.77 (0.40 to 0.77)	0.76 (0.40 to 0.76)	0.45 (0.19 to 0.45)	0.53 (0.22 to 0.53)	0.76 (0.40 to 0.76)	0.73 (0.39 to 0.73)
Lung	0.83 (0.62 to 0.83)	0.78 (0.59 to 0.78)	0.78 (0.59 to 0.78)	0.78 (0.59 to 0.78)	0.78 (0.59 to 0.78)	0.72 (0.52 to 0.72)	0.80 (0.58 to 0.80)	0.78 (0.59 to 0.78)	0.81 (0.61 to 0.81)
Bone sarcoma	1.59 (0.70 to 1.59)	0.74 (0.32 to 0.74)	0.71 (0.31 to 0.71)	0.74 (0.32 to 0.74)	0.73 (0.32 to 0.73)	0.51 (0.16 to 0.51)	0.51 (0.16 to 0.51)	0.74 (0.32 to 0.74)	0.67 (0.29 to 0.67)
Melanoma	1.41 (1.01 to 1.41)	1.08 (0.77 to 1.08)	1.06 (0.76 to 1.06)	1.08 (0.77 to 1.08)	1.08 (0.77 to 1.08)	1.20 (0.82 to 1.20)	1.13 (0.78 to 1.13)	1.07 (0.77 to 1.07)	1.16 (0.83 to 1.16)
Mesothelioma	0.50 (0.22 to 0.50)	0.50 (0.22 to 0.50)	0.50 (0.22 to 0.50)	0.51 (0.23 to 0.51)	0.51 (0.23 to 0.51)	0.47 (0.17 to 0.47)	0.46 (0.17 to 0.46)	0.50 (0.22 to 0.50)	0.55 (0.24 to 0.55)
Kaposi's sarcoma	79.54 (37.41 to 79.54)	48.22 (22.02 to 48.22)	48.03 (21.90 to 48.03)	50.18 (22.71 to 50.18)	47.57 (21.70 to 47.57)	55.96 (23.39 to 55.96)	56.51 (23.76 to 56.51)	49.33 (22.46 to 49.33)	19.83 (8.94 to 19.83)
Soft tissue sarcoma	1.13 (0.53 to 1.13)	0.75 (0.35 to 0.75)	0.74 (0.34 to 0.74)	0.75 (0.35 to 0.75)	0.75 (0.35 to 0.75)	0.73 (0.30 to 0.73)	0.74 (0.30 to 0.74)	0.75 (0.35 to 0.75)	0.80 (0.37 to 0.80)
Breast	1.35 (0.55 to 1.35)	1.03 (0.42 to 1.03)	1.02 (0.42 to 1.02)	1.06 (0.43 to 1.06)	1.05 (0.43 to 1.05)	0.97 (0.31 to 0.97)	1.02 (0.32 to 1.02)	1.02 (0.41 to 1.02)	1.00 (0.39 to 1.00)
Penile	2.27 (1.11 to 2.27)	1.82 (0.89 to 1.82)	1.80 (0.88 to 1.80)	1.84 (0.90 to 1.84)	1.83 (0.89 to 1.83)	1.92 (0.88 to 1.92)	2.14 (0.99 to 2.14)	1.83 (0.89 to 1.83)	1.44 (0.69 to 1.44)
Prostate	Reference	Reference	Reference	Reference	Reference	Reference	Reference	Reference	Reference
Testicular	2.32 (1.54 to 2.32)	0.69 (0.44 to 0.69)	0.67 (0.42 to 0.67)	0.68 (0.43 to 0.68)	0.68 (0.43 to 0.68)	0.55 (0.31 to 0.55)	0.54 (0.31 to 0.54)	0.70 (0.44 to 0.70)	0.75 (0.48 to 0.75)
Renal	1.21 (0.82 to 1.21)	0.95 (0.64 to 0.95)	0.94 (0.64 to 0.94)	0.92 (0.62 to 0.92)	0.92 (0.62 to 0.92)	1.00 (0.65 to 1.00)	1.03 (0.67 to 1.03)	0.95 (0.65 to 0.95)	0.98 (0.66 to 0.98)
Ureteric	0.57 (0.18 to 0.57)	0.60 (0.19 to 0.60)	0.61 (0.19 to 0.61)	0.61 (0.19 to 0.61)	0.61 (0.19 to 0.61)	0.53 (0.13 to 0.53)	0.55 (0.14 to 0.55)	0.60 (0.19 to 0.60)	0.65 (0.21 to 0.65)
Bladder	0.75 (0.61 to 0.75)	0.83 (0.67 to 0.83)	0.83 (0.67 to 0.83)	0.78 (0.63 to 0.78)	0.78 (0.63 to 0.78)	0.70 (0.54 to 0.70)	0.72 (0.56 to 0.72)	0.83 (0.67 to 0.83)	0.90 (0.72 to 0.90)
Brain	1.97 (1.27 to 1.97)	0.91 (0.58 to 0.91)	0.89 (0.56 to 0.89)	0.86 (0.54 to 0.86)	0.87 (0.54 to 0.87)	0.78 (0.43 to 0.78)	0.76 (0.42 to 0.76)	0.91 (0.58 to 0.91)	0.86 (0.54 to 0.86)
Thyroid	2.35 (1.36 to 2.35)	1.24 (0.71 to 1.24)	1.21 (0.69 to 1.21)	1.10 (0.60 to 1.10)	1.08 (0.60 to 1.08)	1.45 (0.79 to 1.45)	1.41 (0.77 to 1.41)	1.24 (0.71 to 1.24)	1.21 (0.69 to 1.21)
Cancer of unknown primary	0.89 (0.67 to 0.89)	0.76 (0.57 to 0.76)	0.75 (0.56 to 0.75)	0.72 (0.54 to 0.72)	0.72 (0.54 to 0.72)	0.77 (0.56 to 0.77)	0.77 (0.55 to 0.77)	0.76 (0.57 to 0.76)	0.76 (0.57 to 0.76)
Hodgkin lymphoma	2.76 (1.87 to 2.76)	1.10 (0.72 to 1.10)	1.05 (0.69 to 1.05)	1.09 (0.71 to 1.09)	1.09 (0.71 to 1.09)	0.94 (0.56 to 0.94)	0.99 (0.60 to 0.99)	1.10 (0.72 to 1.10)	1.16 (0.76 to 1.16)
Non-Hodgkin lymphoma	0.88 (0.68 to 0.88)	0.68 (0.52 to 0.68)	0.67 (0.52 to 0.67)	0.67 (0.52 to 0.67)	0.68 (0.52 to 0.68)	0.63 (0.46 to 0.63)	0.63 (0.46 to 0.63)	0.68 (0.52 to 0.68)	0.73 (0.56 to 0.73)
Multiple myeloma	0.85 (0.65 to 0.85)	0.77 (0.58 to 0.77)	0.76 (0.58 to 0.76)	0.73 (0.55 to 0.73)	0.73 (0.55 to 0.73)	0.76 (0.55 to 0.76)	0.75 (0.54 to 0.75)	0.76 (0.58 to 0.76)	0.77 (0.58 to 0.77)
Leukemia	0.77 (0.56 to 0.77)	0.55 (0.39 to 0.55)	0.54 (0.39 to 0.54)	0.54 (0.39 to 0.54)	0.54 (0.39 to 0.54)	0.51 (0.35 to 0.51)	0.51 (0.35 to 0.51)	0.55 (0.40 to 0.55)	0.65 (0.40 to 0.65)
All other	1.20 (0.84 to 1.20)	0.92 (0.65 to 0.92)	0.91 (0.64 to 0.91)	0.91 (0.63 to 0.91)	0.91 (0.63 to 0.91)	0.88 (0.58 to 0.88)	0.89 (0.59 to 0.89)	0.93 (0.65 to 0.93)	0.90 (0.63 to 0.90)

NOTE. Data are presented as odds ratio (95% CI), unless otherwise noted.

**Table A4.** Cancer Prevalence and Alternative Response Options to the Sexual Orientation Question in Women and Men (General Practice Patient Survey)

Variable	Sexual Orientation	OR for Reporting Cancer in the Last 5 Years (95% CI)	<i>P</i>
<b>Women</b>			
Adjusted for age	Heterosexual	Reference	.19
	Lesbian/bisexual	1.14 (0.94 to 1.38)	
Considering lesbian women only	Heterosexual	Reference	.097
	Lesbian	1.22 (0.96 to 1.53)	
Considering bisexual women only	Heterosexual	Reference	.99
	Bisexual	1.00 (0.72 to 1.40)	
Considering both groups separately	Heterosexual	Reference	.25
	Lesbian	1.22 (0.96 to 1.53)	
	Bisexual	1.00 (0.72 to 1.40)	
"Other" responses	Heterosexual	Reference	.38
	"Other response"	0.90 (0.72 to 1.13)	
"Prefer not to say"	Heterosexual women	Reference	.18
	"Prefer not to say"	0.95 (0.88 to 1.02)	
Missing response	Heterosexual	Reference	.027
	Item nonresponse	0.94 (0.89 to 0.99)	
<b>Men</b>			
Adjusted for age	Heterosexual	Reference	< .001
	Gay/bisexual	1.31 (1.15 to 1.49)	
Considering gay men only	Heterosexual	Reference	< .001
	Gay	1.45 (1.25 to 1.69)	
Considering bisexual men only	Heterosexual	Reference	.95
	Bisexual	1.01 (0.78 to 1.31)	
Considering both groups separately	Heterosexual	Reference	< .001
	Gay	1.45 (1.25 to 1.69)	
	Bisexual	1.01 (0.78 to 1.31)	
"Other" responses	Heterosexual	Reference	.10
	"Other response"	0.82 (0.65 to 1.04)	
"Prefer not to say"	Heterosexual	Reference	< .001
	"Prefer not to say"	0.79 (0.73 to 0.86)	
Missing response	Heterosexual	Reference	.130
	Item nonresponse	0.95 (0.89 to 1.02)	

Abbreviation: OR, odds ratio.

Overall and Site-Specific Diagnosis of Cancer Among Sexual Minorities

**Table A5.** Odds Ratios of Specific Cancer Site Diagnosis by Lesbian/Bisexual Orientation, and Alternative Sexual Orientation Question Responses in Women (Cancer Patient Experience Survey)

ICD-10 Code	Diagnosis	Main Model (outcome is lesbian/bisexual heterosexual women)	Sexual Orientation Question Responses in Women (Cancer Patient Experience Survey)				Missing/Nonresponse to the Sexual Orientation Question Compared With Heterosexual Women
			Lesbian Women Only Compared With Heterosexual Women	Bisexual Women Only Compared With Heterosexual Women	"Other" Sexual Orientation Compared With Heterosexual Women	"Prefer Not to Say" Compared With Heterosexual Women	
	Total, No.	130,953	130,276	127,476	129,907	135,529	140,725
	Model outcome, No.	920	685	235	668	5,384	10,572
	P, joint test, cancer	< .001	< .001	.084	.52	.13	.001
C01, C09, C10	Oropharyngeal	3.19 (1.69 to 6.04)	3.23 (1.58 to 6.58)	3.06 (0.75 to 12.52)	1.65 (0.53 to 5.18)	1.05 (0.64 to 1.74)	0.99 (0.66 to 1.48)
C02, C03, C04, C05	Oral	1.17 (0.43 to 3.15)	0.78 (0.19 to 3.15)	2.35 (0.58 to 9.62)	1.01 (0.32 to 3.16)	0.93 (0.60 to 1.42)	1.13 (0.85 to 1.51)
C07, C08	Parotid/salivary					1.19 (0.48 to 2.92)	1.58 (0.86 to 2.89)
C15	Esophageal	0.52 (0.16 to 1.61)	0.25 (0.03 to 1.78)	1.14 (0.28 to 4.67)	1.14 (0.58 to 2.23)	0.95 (0.73 to 1.25)	1.28 (1.08 to 1.52)
C16	Stomach	2.25 (1.19 to 4.25)	1.92 (0.85 to 4.34)	3.12 (1.13 to 8.59)	1.42 (0.70 to 2.90)	1.18 (0.88 to 1.57)	0.93 (0.74 to 1.17)
C17	Small intestine	0.72 (0.10 to 5.14)	0.54 (0.32 to 0.93)	2.84 (0.39 to 20.50)	1.54 (0.38 to 6.24)	0.68 (0.32 to 1.44)	0.84 (0.51 to 1.38)
C18	Colon	0.79 (0.54 to 1.16)	0.54 (0.32 to 0.93)	1.44 (0.82 to 2.52)	0.90 (0.64 to 1.27)	1.02 (0.91 to 1.15)	1.14 (1.04 to 1.23)
C19, C20	Rectal	0.65 (0.38 to 1.09)	0.59 (0.31 to 1.10)	0.83 (0.33 to 2.06)	1.04 (0.68 to 1.59)	1.08 (0.93 to 1.26)	1.01 (0.90 to 1.13)
C21	Anal	0.29 (0.04 to 2.04)	0.38 (0.05 to 2.68)		0.72 (0.18 to 2.90)	0.75 (0.46 to 1.23)	1.24 (0.93 to 1.66)
C22	Liver	0.43 (0.06 to 3.08)	0.59 (0.08 to 4.26)		0.82 (0.20 to 3.30)	0.85 (0.51 to 1.41)	1.10 (0.80 to 1.52)
C23	Gallbladder	2.03 (0.28 to 14.69)	2.81 (0.39 to 20.39)			1.11 (0.45 to 2.74)	1.01 (0.51 to 2.01)
C25	Pancreatic	1.68 (0.86 to 3.28)	1.02 (0.38 to 2.74)	3.59 (1.44 to 8.94)	1.40 (0.69 to 2.85)	1.12 (0.84 to 1.49)	1.09 (0.88 to 1.35)
C32	Laryngeal	1.02 (0.14 to 7.30)		3.73 (0.51 to 27.05)	1.87 (0.46 to 7.59)	1.54 (0.87 to 2.71)	1.27 (0.81 to 1.98)
C33, C34	Lung	1.08 (0.74 to 1.57)	1.04 (0.66 to 1.63)	1.21 (0.60 to 2.43)	1.24 (0.88 to 1.75)	0.96 (0.84 to 1.11)	1.24 (1.13 to 1.36)
C40, C41	Bone sarcoma	1.21 (0.38 to 3.86)	1.70 (0.53 to 5.43)			0.88 (0.43 to 1.78)	0.89 (0.51 to 1.54)
C43	Melanoma	0.91 (0.58 to 1.43)	0.66 (0.36 to 1.20)	1.72 (0.86 to 3.45)	0.79 (0.44 to 1.41)	0.97 (0.80 to 1.17)	1.11 (0.97 to 1.27)
C45	Mesothelioma	3.79 (1.40 to 10.31)	4.09 (1.29 to 12.93)	3.31 (0.46 to 23.99)	1.47 (0.36 to 5.96)	0.65 (0.31 to 1.39)	1.18 (0.78 to 1.77)
C46	Kaposi's sarcoma						1.00 (0.12 to 8.25)
C49	Soft tissue sarcoma	0.58 (0.14 to 2.35)	0.39 (0.05 to 2.79)	1.18 (0.16 to 8.52)		0.78 (0.45 to 1.33)	1.26 (0.92 to 1.74)
C50	Breast	Reference	Reference	Reference	Reference	Reference	Reference
C51, C52	Vulva/vaginal	0.67 (0.21 to 2.10)	0.62 (0.15 to 2.49)	0.83 (0.11 to 5.96)	0.64 (0.20 to 2.02)	1.50 (1.13 to 1.98)	1.27 (1.02 to 1.58)
C53	Cervical	1.13 (0.70 to 1.80)	1.04 (0.60 to 1.80)	1.46 (0.58 to 3.67)	1.87 (1.01 to 3.47)	0.81 (0.59 to 1.12)	1.17 (0.93 to 1.46)
C54, C55	Endometrial	2.04 (1.52 to 2.74)	2.04 (1.45 to 2.88)	2.09 (1.17 to 3.72)	1.17 (0.80 to 1.70)	1.08 (0.94 to 1.24)	1.11 (1.00 to 1.23)
C56	Ovarian	1.25 (0.92 to 1.70)	1.38 (0.98 to 1.93)	0.88 (0.42 to 1.82)	0.56 (0.34 to 0.90)	1.08 (0.95 to 1.23)	0.94 (0.85 to 1.05)
C64	Renal	0.77 (0.32 to 1.88)	1.04 (0.43 to 2.53)		1.78 (0.97 to 3.28)	1.03 (0.77 to 1.37)	1.12 (0.91 to 1.37)
C65, C66	Ureteric	2.14 (0.53 to 8.67)	3.49 (0.86 to 14.23)		0.54 (0.08 to 3.88)	0.58 (0.29 to 1.17)	0.80 (0.53 to 1.22)
C67	Bleeder	1.29 (0.83 to 2.00)	1.49 (0.89 to 2.48)	0.99 (0.42 to 2.31)	1.26 (0.88 to 1.80)	1.17 (1.02 to 1.34)	1.25 (1.14 to 1.37)
C71	Brain	0.80 (0.35 to 1.80)	0.68 (0.25 to 1.83)	1.26 (0.30 to 5.19)	0.37 (0.05 to 2.62)	0.75 (0.46 to 1.22)	1.11 (0.79 to 1.56)
C73	Thyroid	0.93 (0.53 to 1.63)	0.82 (0.42 to 1.60)	1.34 (0.48 to 3.72)	1.63 (0.83 to 3.20)	1.23 (0.93 to 1.62)	1.21 (0.97 to 1.52)
C77, C78, C79, C80	Cancer of unknown primary	0.96 (0.73 to 1.26)	1.04 (0.77 to 1.40)	0.73 (0.39 to 1.38)	1.06 (0.79 to 1.44)	1.02 (0.91 to 1.14)	1.03 (0.95 to 1.11)
C81	Hodgkin lymphoma	1.63 (0.99 to 2.70)	1.22 (0.63 to 2.35)	2.99 (1.34 to 6.71)	0.52 (0.13 to 2.14)	0.80 (0.52 to 1.22)	0.92 (0.66 to 1.29)
C82, C83, C85	Non-Hodgkin lymphoma	1.36 (1.02 to 1.82)	1.24 (0.88 to 1.76)	1.73 (1.03 to 2.91)	0.91 (0.64 to 1.30)	1.09 (0.96 to 1.23)	0.99 (0.90 to 1.08)
C90	Multiple myeloma	1.03 (0.68 to 1.56)	1.03 (0.63 to 1.69)	1.05 (0.48 to 2.29)	1.07 (0.73 to 1.56)	1.02 (0.89 to 1.18)	1.03 (0.93 to 1.14)
C91, C92, C93, C94, C95	Leukemia	1.17 (0.78 to 1.75)	1.16 (0.73 to 1.86)	1.22 (0.56 to 2.68)	1.12 (0.71 to 1.79)	1.28 (1.09 to 1.50)	1.09 (0.96 to 1.24)
D05	Ductal carcinoma in situ	0.82 (0.52 to 1.29)	0.73 (0.42 to 1.24)	1.16 (0.51 to 2.67)	0.92 (0.53 to 1.62)	0.97 (0.80 to 1.17)	1.09 (0.95 to 1.26)
	All other	1.41 (0.91 to 2.17)	1.82 (1.17 to 2.85)	0.25 (0.03 to 1.78)	1.21 (0.75 to 1.97)	1.01 (0.84 to 1.23)	1.03 (0.90 to 1.19)

NOTE: Data are presented as odds ratio (95% CI), unless otherwise noted. Abbreviation: ICD-10, International Classification of Diseases, Tenth Revision.



**Table A6.** Odds Ratios of Specific Cancer Site Diagnosis by Gay/Bisexual Orientation, and Alternative Sexual Orientation Question Responses in Men (Cancer Patient Experience Survey)

ICD-10 Code	Diagnosis	Main Model (gay/bisexual heterosexual men)	Gay Men Only Compared With Heterosexual Men	Bisexual Men Only Compared With Heterosexual Men	"Other" Sexual Orientation Compared With Heterosexual Men	"Prefer Not to Say" Compared With Heterosexual Men	Missing/Nonresponse to the Sexual Orientation Question Compared With Heterosexual Men
	Total, No.	117,877	117,581	115,151	115,139	120,902	124,613
	Model outcome, No.	1,279	983	296	465	4,261	7,972
	P, joint test, cancer	< .001	< .001	.063	.17	< .001	.0005
C01, C09, C10	Oropharyngeal	0.68 (0.41 to 1.12)	0.53 (0.29 to 0.98)	1.37 (0.59 to 3.23)		0.66 (0.44 to 0.99)	1.02 (0.79 to 1.31)
C02, C03, C04, C05	Oral	1.10 (0.64 to 1.91)	1.28 (0.72 to 2.27)	0.40 (0.06 to 2.92)	1.08 (0.34 to 3.43)	0.95 (0.62 to 1.45)	1.09 (0.81 to 1.47)
C07, C08	Parotid/salivary	0.97 (0.24 to 3.95)	0.62 (0.09 to 4.51)	2.08 (0.28 to 15.20)	1.61 (0.22 to 11.68)	0.96 (0.39 to 2.34)	1.23 (0.69 to 2.18)
C15	Esophageal	0.98 (0.71 to 1.36)	1.05 (0.73 to 1.51)	0.75 (0.36 to 1.58)	1.02 (0.58 to 1.81)	0.88 (0.72 to 1.09)	1.11 (0.97 to 1.28)
C16	Stomach	0.51 (0.30 to 0.86)	0.50 (0.27 to 0.92)	0.55 (0.20 to 1.52)	1.53 (0.88 to 2.66)	1.13 (0.91 to 1.41)	1.12 (0.96 to 1.31)
C17	Small intestine	0.82 (0.30 to 2.24)	1.05 (0.39 to 2.86)			0.99 (0.54 to 1.82)	0.74 (0.44 to 1.22)
C18	Colon	0.84 (0.66 to 1.06)	0.81 (0.61 to 1.07)	0.94 (0.59 to 1.49)	1.19 (0.82 to 1.72)	1.08 (0.95 to 1.23)	1.00 (0.91 to 1.10)
C19, C20	Rectal	0.75 (0.57 to 0.97)	0.78 (0.58 to 1.05)	0.64 (0.36 to 1.14)	1.06 (0.69 to 1.61)	1.13 (0.98 to 1.30)	1.03 (0.93 to 1.14)
C21	Anal	15.52 (10.97 to 21.94)	18.36 (12.69 to 26.56)	5.88 (2.11 to 16.35)		2.37 (1.46 to 3.86)	1.64 (1.08 to 2.50)
C22	Liver	0.56 (0.26 to 1.19)	0.52 (0.21 to 1.27)	0.68 (0.17 to 2.80)	1.09 (0.40 to 2.98)	0.93 (0.65 to 1.35)	0.84 (0.64 to 1.11)
C23	Gallbladder				6.12 (0.83 to 45.20)	2.81 (1.00 to 7.86)	3.23 (1.56 to 6.69)
C25	Pancreatic	1.02 (0.61 to 1.71)	0.91 (0.49 to 1.69)	1.41 (0.56 to 3.52)	0.69 (0.22 to 2.20)	1.38 (1.04 to 1.83)	0.86 (0.67 to 1.11)
C32	Laryngeal	0.75 (0.40 to 1.43)	0.78 (0.38 to 1.59)	0.67 (0.16 to 2.76)	0.81 (0.26 to 2.58)	1.34 (0.98 to 1.83)	1.31 (1.04 to 1.65)
C33, C34	Lung	0.78 (0.59 to 1.04)	0.83 (0.60 to 1.14)	0.65 (0.36 to 1.19)	1.23 (0.82 to 1.87)	1.15 (1.00 to 1.33)	1.13 (1.02 to 1.25)
C40, C41	Bone sarcoma	0.74 (0.32 to 1.71)	0.96 (0.41 to 2.24)		1.59 (0.38 to 6.71)	1.22 (0.68 to 2.20)	0.74 (0.41 to 1.33)
C43	Melanoma	1.08 (0.77 to 1.50)	1.12 (0.77 to 1.63)	0.93 (0.44 to 1.96)	1.09 (0.59 to 2.01)	0.88 (0.70 to 1.11)	0.83 (0.70 to 0.99)
C45	Mesothelioma	0.50 (0.22 to 1.13)	0.45 (0.17 to 1.22)	0.64 (0.16 to 2.63)	0.49 (0.12 to 2.00)	1.04 (0.75 to 1.44)	0.93 (0.72 to 1.19)
C46	Kaposi's sarcoma	48.22 (22.02 to 105.58)	56.61 (25.02 to 128.12)	21.67 (2.80 to 167.65)		11.03 (3.97 to 30.66)	1.17 (0.15 to 9.02)
C49	Soft tissue sarcoma	0.75 (0.35 to 1.61)	0.96 (0.44 to 2.06)		1.78 (0.65 to 4.90)	0.90 (0.55 to 1.47)	1.09 (0.79 to 1.51)
C50	Breast	1.03 (0.42 to 2.53)	1.05 (0.38 to 2.85)	0.98 (0.13 to 7.09)	4.18 (1.68 to 10.41)	1.77 (1.11 to 2.84)	1.17 (0.77 to 1.78)
C60	Penile	1.82 (0.89 to 3.74)	2.05 (0.95 to 4.43)	1.04 (0.14 to 7.52)	1.60 (0.39 to 6.55)	1.75 (1.10 to 2.81)	1.40 (0.96 to 2.05)
C61	Prostate	Reference	Reference	Reference	Reference	Reference	Reference
C62	Testicular	0.69 (0.44 to 1.09)	0.67 (0.40 to 1.10)	0.82 (0.29 to 2.31)	0.32 (0.04 to 2.41)	0.80 (0.50 to 1.28)	0.85 (0.58 to 1.26)
C64	Renal	0.95 (0.64 to 1.40)	0.85 (0.53 to 1.34)	1.33 (0.65 to 2.69)	1.21 (0.62 to 2.35)	0.81 (0.62 to 1.06)	1.07 (0.90 to 1.27)
C65, C66	Ureteric	0.60 (0.19 to 1.88)	0.83 (0.26 to 2.60)		0.99 (0.24 to 4.04)	1.35 (0.89 to 2.05)	0.91 (0.64 to 1.30)
C67	Bladder	0.83 (0.67 to 1.03)	0.81 (0.63 to 1.04)	0.87 (0.58 to 1.31)	1.18 (0.86 to 1.61)	1.16 (1.04 to 1.29)	1.02 (0.94 to 1.11)
C71	Brain	0.91 (0.58 to 1.44)	0.96 (0.58 to 1.57)	0.69 (0.21 to 2.30)	0.62 (0.15 to 2.55)	1.55 (1.12 to 2.14)	1.35 (1.03 to 1.77)
C73	Thyroid	1.24 (0.71 to 2.17)	1.29 (0.71 to 2.37)	1.03 (0.25 to 4.30)	1.60 (0.50 to 5.13)	1.68 (1.13 to 2.49)	1.08 (0.75 to 1.56)
C77, C78, C79, C80	Cancer of unknown primary	0.76 (0.57 to 1.01)	0.71 (0.51 to 1.00)	0.90 (0.52 to 1.55)	0.55 (0.31 to 1.00)	0.97 (0.83 to 1.14)	0.93 (0.83 to 1.05)
C81	Hodgkin lymphoma	1.10 (0.72 to 1.67)	1.27 (0.81 to 1.98)	0.36 (0.08 to 1.60)	2.10 (0.92 to 4.81)	1.15 (0.78 to 1.68)	0.85 (0.60 to 1.20)
C82, C83, C85	Non-Hodgkin lymphoma	0.68 (0.52 to 0.88)	0.59 (0.43 to 0.81)	1.00 (0.63 to 1.61)	1.17 (0.79 to 1.74)	1.04 (0.90 to 1.19)	0.89 (0.80 to 0.99)
C90	Multiple myeloma	0.77 (0.58 to 1.01)	0.74 (0.54 to 1.02)	0.86 (0.50 to 1.46)	0.87 (0.55 to 1.38)	1.15 (0.99 to 1.32)	1.01 (0.91 to 1.12)
C91, C92, C93, C94, C95	Leukemia	0.55 (0.39 to 0.75)	0.55 (0.38 to 0.80)	0.51 (0.26 to 1.02)	0.62 (0.34 to 1.13)	1.12 (0.95 to 1.31)	1.00 (0.88 to 1.13)
	All other	0.92 (0.65 to 1.32)	1.06 (0.72 to 1.56)	0.45 (0.16 to 1.25)	1.16 (0.63 to 2.14)	1.21 (0.99 to 1.49)	1.13 (0.96 to 1.32)

NOTE: Data are presented as odds ratio (95% CI), unless otherwise noted. Abbreviation: ICD-10, International Classification of Diseases, Tenth Revision.

**Overall and Site-Specific Diagnosis of Cancer Among Sexual Minorities**

**Table A7.** GPPS and CPES Survey Responses Flowchart

Survey	Survey Year			
	2010	2011/2012	2013	2014
<b>GPPS</b>				
Responses received		1,037,946		
Valid response to the question about long-term health conditions (cancer)		906,578		
Response to the question about gender		891,707		
Response to the question about age		884,966		
Response to the question about sexual orientation		838,083		
Excluding responses "Other" and "Prefer not to say"		796,594		
Included responses		796,594		
<b>CPES</b>				
Responses received	67,713	71,793	68,737	70,141
Total responses		278,384		
Single gender cancer diagnoses/inconsistent gender exclusions*		278,332		
Response to the question about sexual orientation		259,788		
Excluding responses "Other" and "Prefer not to say"		249,010		
Included responses		249,010		
Responses included in multivariable models†		248,830		

NOTE. All data are given as No.

Abbreviations: CPES, Cancer Patient Experience Survey; GPPS, General Practice Patient Survey.

\*Cervical, 9 male; endometrial, 11 male; ovarian, 11 male; prostate, 21 female.

†Parotid/salivary cancer and Kaposi's sarcoma are excluded from multivariable analysis in women because small numbers of individuals led to perfect prediction in the multivariable models, and gallbladder and ductal carcinoma in situ are excluded from multivariable analysis in men for the same reason.

**Table A8.** Cancer Diagnosis by ICD-10 Code

Cancer	ICD-10 Code	ICD-10 Code Description
Oropharyngeal	C01, C09, C10	Malignant neoplasms of base of tongue (C01), tonsil (C09), and oropharynx (C10)
Oral	C02, C03, C04, C05	Malignant neoplasm of other and unspecified parts of tongue (C02), gum (C03), floor of mouth (C04), and palate (C05)
Parotid	C07, C08	Malignant neoplasm of parotid gland (C07) and other and unspecified major salivary glands (C08)
Esophageal	C15	Malignant neoplasm of esophagus
Stomach	C16	Malignant neoplasm of stomach
Small intestine	C17	Malignant neoplasm of small intestine
Colon	C18	Malignant neoplasm of colon
Rectal	C19, C20	Malignant neoplasm of recto-sigmoid junction (C19) and of rectum (C20)
Anal	C21	Malignant neoplasm of anus and anal canal
Liver	C22	Malignant neoplasm of liver and intrahepatic bile ducts
Gallbladder	C23	Malignant neoplasm of gallbladder
Pancreatic	C25	Malignant neoplasm of pancreas
Laryngeal	C32	Malignant neoplasm of larynx
Lung	C33, C34	Malignant neoplasm of trachea (C33) and bronchus and lung (C34)
Bone sarcoma	C40, C41	Malignant neoplasm of bone and articular cartilage of limbs (C40) and other and unspecified sites (C41)
Melanoma	C43	Malignant melanoma of skin
Mesothelioma	C45	Mesothelioma
Kaposi's sarcoma	C46	Kaposi sarcoma
Soft tissue sarcoma	C49	Malignant neoplasm of other connective and soft tissue
Breast	C50	Malignant neoplasm of breast
Vulval/vaginal	C51, C52	Malignant neoplasm of vulva (C51) and vagina (C52)
Cervical	C53	Malignant neoplasm of cervix uteri
Endometrial	C54, C55	Malignant neoplasm of corpus uteri (C54) and of uterus, unspecified (C55)
Ovarian	C56	Malignant neoplasm of ovary
Penile	C60	Malignant neoplasm of penis
Prostate	C61	Malignant neoplasm of prostate
Testicular	C62	Malignant neoplasm of testis
Renal	C64	Malignant neoplasm of kidney, except renal pelvis
Ureteric	C65, C66	Malignant neoplasm of renal pelvis (C65) and ureter (C66)
Bladder	C67	Malignant neoplasm of bladder
Brain	C71	Malignant neoplasm of brain
Thyroid	C73	Malignant neoplasm of thyroid gland
Cancer of unknown primary	C77, C78, C79, C80	Secondary and unspecified malignant neoplasm of lymph nodes (C77); secondary malignant neoplasm of respiratory and digestive organs (C78); secondary malignant neoplasm of other and unspecified sites (C79); and malignant neoplasm, without specification of site (C80)
Hodgkin lymphoma	C81	Hodgkin lymphoma
Non-Hodgkin lymphoma	C82, C83, C85	Follicular (nodular) non-Hodgkin lymphoma (C82), diffuse non-Hodgkin lymphoma (C83), other and unspecified types of non-Hodgkin lymphoma (C85)
Multiple myeloma	C90	Multiple myeloma and malignant plasma cell neoplasms
Leukemia	C91, C92, C93, C94, C95	Lymphoid leukemia (C91), myeloid leukemia (C92), monocytic leukemia (C93), other leukemias of specified cell type (C94), and other leukemias of unspecified cell type (C95)
Ductal carcinoma in situ	D05	Carcinoma in situ of breast
All other diagnoses		

Abbreviation: ICD-10, International Classification of Diseases, Tenth Revision.