

RESEARCH ARTICLE

Intra-operative biopsy in chronic sinusitis detects pathogenic *Escherichia coli* that carry *fimG/H*, *fyuA* and *agn43* genes coding biofilm formation

Michał Michalik¹, Alfred Samet¹, Andrzej Marszałek², Beata Krawczyk³, Roman Kotłowski³, Alex Nowicki⁴, Tomasz Anyszek², Stella Nowicki⁴, Józef Kur³, Bogdan Nowicki^{4*}

1 Medical Center MML, Warsaw, Poland, **2** Medical Laboratories, SYNEVO, Warszawa, Poland, **3** Department of Molecular Biotechnology and Microbiology, Faculty of Chemistry, Gdańsk University of Technology, Gdańsk, Poland, **4** Nowicki Institute for Women's Health Research (Now I for HeR), 114 Governors Way, Brentwood, TN, United States of America

* bnowicki1949@gmail.com



OPEN ACCESS

Citation: Michalik M, Samet A, Marszałek A, Krawczyk B, Kotłowski R, Nowicki A, et al. (2018) Intra-operative biopsy in chronic sinusitis detects pathogenic *Escherichia coli* that carry *fimG/H*, *fyuA* and *agn43* genes coding biofilm formation. PLoS ONE 13(3): e0192899. <https://doi.org/10.1371/journal.pone.0192899>

Editor: Andrzej T. Slominski, University of Alabama at Birmingham, UNITED STATES

Received: September 20, 2017

Accepted: January 18, 2018

Published: March 23, 2018

Copyright: ©2018 Michalik et al. This is an open access article distributed under the terms of the [Creative Commons Attribution License](https://creativecommons.org/licenses/by/4.0/), which permits unrestricted use, distribution, and reproduction in any medium, provided the original author and source are credited.

Data Availability Statement: All relevant data are within the paper. There is no supplemental files attached. For Genetic typing files please contact Prof. B. Krawczyk. For patient clinical files contact Dr. Michał Michalik. Queries related to data access may also be submitted directly to the Medical Center MML in Warsaw at: kontakt@mml.com.pl.

Funding: This study was supported by research grant from Medical Center MML, Award Number 2015-01 to J. Kur. SYNEVO Medical Laboratories

Abstract

The aim of this study was to investigate whether or not surgical biopsy of sinus tissue in chronic sinusitis, not responsive to treatment, would detect *E. coli*. We intended to evaluate *E. coli* virulence genes, therefore dispute the causal role of such an unusual microorganism in chronic sinusitis, as well as consider effective pathogen-targeted therapy. Patients with *E. coli* isolated by intra-operative puncture biopsy were included in the study. Genetic analysis of *E. coli* isolates, including phylogenetic grouping and virulence factor characteristics, were done by multiplex PCR. We identified 26 patients with chronic sinusitis, in which 26 *E. coli* isolates were cultured. The *E. coli* isolates belonged mainly to pathogenic phylogenetic group B2, and carried multiple virulence genes. Three genes in particular were present in all (100%) of examined isolates, they were (1) marker *agn43* gene for forming biofilm, (2) type 1 fimbriae (*fimG/H* gene) and (3) yersiniabactin receptor (*fyuA*). Furthermore, a pseudo-phylogenetic tree of virulence genes distribution revealed possible cooperation between *agn43*, *fimG/H*, and *fyuA* in the coding of biofilm formation. Intra-operative-biopsy and culture-based therapy, targeting the isolated *E. coli*, coincided with long-term resolution of symptoms. This is the first report demonstrating an association between a highly pathogenic *E. coli*, chronic sinus infection, and resolution of symptoms upon *E. coli* targeted therapy, a significant finding due to the fact that *E. coli* has not been considered to be a commensal organism of the oropharynx or sinuses. We postulate that the simultaneous presence of three genes, each coding biofilm formation, may in part account for the chronicity of *E. coli* sinusitis.

Introduction

Chronic sinusitis (CRS) is among the most frequent chronic conditions, affecting approximately 4 to 28% of the general public [1]. This disease is not only a socioeconomic burden on

provided support in the form of salaries for authors AM and TA, but did not have any additional role in the study design, data collection and analysis, decision to publish, or preparation of the manuscript.

Competing interests: SYNEVO Medical Laboratories provided support in the form of salaries for authors AM and TA, but did not have any additional role in the study design, data collection and analysis, decision to publish, or preparation of the manuscript. There is no conflict of interest between the MML Medical Center, SYNEVO Medical Laboratories and Technical School of Gdansk relating to employment, consultancy, patents, products in development, and marketed products. This does not alter our adherence to PLOS ONE policies on sharing data and materials. All authors declare no conflict of interest.

the community, but also significantly reduces the quality of life of those effected [1]. Chronic sinusitis is defined as an infection of the sinuses, which last for 12 weeks or more, a medical diagnosis which is made based on evidence of inflammation confirmed by rhinoscopy and imaging studies complemented by nasal and sinus bacterial cultures, plus allergy testing, and has a multifactorial etiology [2, 3, 4]. The management of chronic sinusitis involves a combination of antimicrobial treatment and surgery [2, 3] Although there is no direct evidence supporting genetic predisposition to CRS, this disease is more prevalent in patients with inherited mutations leading to disorders such as cystic fibrosis, Kartagener syndrome, allergies and asthma, many of which are direct causes of prolonged inflammation in CRS [4, 5, 6]. It has been described that during chronic sinusitis a malfunction of mucociliary clearance (MCC), epithelial barrier dysfunction, and deficiencies in the host immune response, lead to unresolved infection and inflammation directly resulting in tissue remodeling [6]. This tissue remodeling then further propagates the vicious cycle of deterioration and dysfunction of the sinuses' natural defense mechanisms and yet another cycle of infection and mucosal injury. In addition, multiple indirect causes of chronic sinusitis have also been described. For example, patient ethnicity with further relation to socioeconomic status, geographic location, heritable components, and cultural factors in populations [6].

There are currently six widely accepted theories on chronic sinusitis etiology and pathogenesis ranging from microbial, or immunological in nature to the fault of signaling molecules generated by the metabolism of arachidonic acid [7]. Among the microbial etiologies, the most common culprits of sinusitis are *Staphylococcus aureus*, coagulase negative *Staphylococcus* sp., *Haemophilus influenza*, *Streptococcus pneumonia*, *Klebsiella pneumonia*, *Moraxella catharalis*, and less often, *Pseudomonas aeruginosa*, *Escherichia coli* or anaerobic species [8–14].

Further discussing the 6 theoretical etiologies of CRS, in addition to purely pathogenic bacterial and fungal causes of sinusitis one theory is that, changes in the host microbiome, may alter the normal microbe-host dialogue in humans, leading to the pathogenesis of CRS [15]. The microbiologic features of causative organisms in chronic sinusitis are not well established, and vary from Gram-positive if collected by swab to Gram-negative, including *E. coli*, if collected by biopsy [16]. Antibiotic therapy targeting pathogens classically implicated in sinusitis, while in the presence of Gram-negative pathogens, could augment the risk of therapeutic failure and/or chronic process through natural selection [17]. Yet another of the 6 common theories on CRS etiology is that, bacterial pathogenesis as the primary role in chronic sinusitis is in itself questionable, and rather bacterial virulence is considered a secondary cause of inflammation due to mucosal exposure to bacterial super-antigens [18]. So far the presence of *E. coli* in chronic sinusitis is poorly documented in literature, and has not been shown to be a commensal organism of the oropharynx or sinus cavities. The nature of *E. coli* virulence within a host suffering from chronic sinusitis remains largely unknown. There are only speculations about the role of biofilm [19–22] in the maintenance of inflammation in chronic sinusitis as documented for other diseases like *E. coli* gastrointestinal (GI) [23] and urinary tract infection (UTI) [24, 25]. It is thought, however, that biofilm formation is not singularly responsible for chronic sinusitis, but that correlation with other etiopathogenetic factors is necessary for the development of disease [1, 26]. While the role of virulence genes in chronic/recurrent GI and UT infection has been investigated, there is no such data available for chronic sinusitis [27–30, 8]. The aim of this study was to investigate whether surgical biopsy of sinus tissue in chronic sinusitis, not responsive to antibiotic treatment, would detect *E. coli*, and to evaluate *E. coli* virulence genes, therefore dispute the unlikely pathogenic role of such an unusual microorganism in chronic sinusitis.

Methods

Study population

The study, conducted in the Medical Center MML in Warsaw, in the years 2010–2014, was approved by the Bioethics Committee at the Medical University of Lodz RNN / 128/17 / EC dated 11.04.2017. "Research experiment design: *Escherichia coli* in the pathogenesis of chronic paranasal inflammation. Detection of virulence genes and evaluation of microbial susceptibility of highly pathogenic microorganisms from patients with chronic paranasal inflammation". Patients were informed about their participation in the study and sign a written consent form. Patients' ages ranged from 20 to 63 years (mean age, 41 years 6 months), 18 of which were male and 8 female. Chronic sinusitis was diagnosed on the basis of the patient's medical history and physical examination. The criteria established by the American Academy of Otolaryngology Head & Neck Surgery—pain or tightness in the area of the sinuses, retention of secretions in the sinuses and its difficult outflow and purulent discharge—were used to diagnose chronic sinusitis. Only chronic sinusitis patients, treated at the Medical Center MML in Warsaw, in whom *E. coli* was isolated were included in the study. The assessment of CRS in these patients was further confirmed by histopathology of the biopsied sinus mucosal lining, endoscopy and computed tomography.

Isolation and identification of *E. coli*

Intra-operative puncture biopsy of the patient's sinuses provided materials from which *E. coli* were isolated. Biopsies were transported to the microbiology lab within no longer than three hours from time of collection. Bacterial isolations and identification were performed according to bioMerieux procedures. The semiautomatic bioMerieux Vitek2 analyser was used for *E. coli* identification and antibiotic resistance. *E. coli* strains were stored at -80°C for further analysis.

Genetic examination of *E. coli* isolates

Genomic DNA was isolated from individual bacterial colonies using a commercial kit (ExtractMe DNA bacteria Kit, BLIRT SA, Poland). Genotyping of strains by PCR MP (the polymerase chain reaction melting profiles) was carried out according to the procedure described by Krawczyk et al. [31]. The attribution of *E. coli* strains to a phylogenetic group was done by the multiplex PCR method as described by Clermont et al. [32].

The three multiplex PCRs were used for 12 virulence genes as a homemade test and two genes were separately amplified as a simplex. In multiplex PCR system no. I, six genes coding for virulence factors were detected: (*papC*, *sfaD/E*, *fimG/H* coding the fimbriae P, S, and type 1 respectively, *usp* gene coding for uropathogen specific protein Usp, *cnf1* gene coding cytotoxic necrotising factor 1, and *hlyA* gene responsible for the production of hemolysin toxin. These virulence factors are important for the extra-intestinal strains of *E. coli* (EXPEC) especially for uropathogenic (UPEC) *E. coli* strains. Reaction conditions were as described by Adamus-Bialek et al., [33] with minor modifications by using DNA polymerase Hypernova BLIRT SA, POLAND.

In multiplex PCR system no. II, the sequence of three fragment genes, *kspMTII* [34] (synthesis capsule, group II), *iha* [35] (enterobactin Iha iron regulated gene homologue adhesion) and *focG* [34] (F1C fimbriae), were amplified. In multiplex PCR system III, the sequence of three fragment genes, *iutA* [36] (aerobactin receptor), *fyuA* [37,38] (yersiniabactin receptor) and *ibeA* [39] (invasion of brain endothelium A), were amplified.

In a separate PCR assays, *draCD* (Dr fimbriae) [40, 41] and *agn43* (outer membrane protein Agn43) [42] fragment genes were detected.

Statistical analysis

Statistical analysis between phylogenetic groups B1 and B2 and virulence factors of *E. coli* was performed using the Fisher's exact test. The results were interpreted based on a threshold of statistical significance set at $P = 0.05$. Free Statistics Software, Office for Research Development and Education, version 1.2.1, URL was used, (<http://vassarstats.net/tab2x2.html>).

Pseudophylogenetic tree. The Pseudo-phylogenetic tree was created based on gene distribution in *E. coli* isolates. The values corresponding to the lengths of the branches, stated as R-relation parameters, indicate the degree of relation between virulence genes. The cut-off values for R parameters are: a level close to $R = 0$ indicates an almost identical distribution of virulence genes, $R = 0.5$ denotes a relation of virulence genes distribution, and a total value close to $R = 1$ means unrelated distribution of virulence genes in tested isolates [43].

Results

Clinical evaluation

Study patients had a history of chronic sinusitis ranging from 1 to 4 years. During this period, the study group patients had been given from 3 to 9 different antibiotics (namely beta lactam antibiotics, macrolides and clindamycin) along with anywhere from 2 to 4 different laryngological treatments, which resulted in only short-term alleviation of symptoms, and no long-term relief. Intra-operative puncture biopsy detected *E. coli* in 26 chronic sinusitis patients. We did not perform culture of the oral cavity or sinus before surgery. Our main target was intraoperative surgery and culture of biopsy material. The culture results of 26 biopsy homogenates were all positive for *E. coli*, and showed both mono- and poly-microbial infections. The bacterial species that were co-cultured in different combinations with *E. coli* were found in the following number of cultures out of 26: *S. aureus*-17, *S. epidermidis*-12, *E. faecalis*-6, *K. oxytoca*-3, *P. aeruginosa*-3, *S. sanguinis*-2, *P. mirabilis*-1, *E. cloacae*-1, *S. haemolyticus*-1. Of 26 biopsies, 3 patients had monoculture of *E. coli*. The cultures of 18 biopsies showed 2 pathogens, the majority of which were represented by *E. coli* plus one Gram (+) or Gram (-) pathogen. For example: *E. coli* plus *S. aureus* or *S. epidermidis*, *E. coli* plus *Enterococcus* or *E. coli* plus *Enterobacter* or *Klebsiella*. Five biopsies were multi-microbial and contained *E. coli* plus 3 or more pathogens. For example: *E. coli* plus *Proteus*, *Enterococcus*, and *S. aureus*. Due to scarcity of collected tissues we do not have Gram stain data. However, we did perform histopathology of the selected biopsies. An example of such data is as follows: Foci of sub-endothelial tissue edema with extensive infiltration with multiple plasma cells, plus 40% eosinophils and small number of granulocytes. This data is consistent with a chronic inflammatory process within the sinus tissue biopsy from which *E. coli* and or *E. coli* plus other microorganisms were isolated.

All 26 patients with *E. coli* fulfilled at least 3 of the 4 criteria of chronic sinusitis, as defined by the American Academy of Otolaryngology Head & Neck Surgery. In addition, in all patients with *E. coli* endoscopic examination showed features of chronic sinusitis. All patients received combination therapy: 1) Functional Endoscopic Sinus Surgery (FESS) in conjunction with (depending on the identified anatomical defects): correction of nasal turbinates by Celon method, rinsing the sinuses by Hydrodebrider method and 2) Anti-*E. coli* therapies taking into account the antibiotic sensitivity and the pharmacokinetic parameters of antibiotics including good penetration into the site of infection. Upon performance of culture and sensitivity, 23 *E. coli* isolates were found sensitive to Augmentin, and these patients responded to a combined treatment of surgery plus Augmentin. These 23 patients received a therapy of Augmentin 1000mg BID x 14 days. The remaining 3 patients were found to have *E. coli* isolates sensitive to Ciprofloxacin, and were treated accordingly. After completion of combination FESS plus

targeted antibiotic therapy, laryngological examinations showed no signs of chronic sinusitis. Follow-up cultures using both swabs for colonization of the nose and throat, as well as sinuses aspirates were *E. coli* negative, for all the patients. The observation period after treatment was 3–16 months, within which all patients remained asymptomatic. Due to resolution of symptoms and negative cultures, a post treatment follow-up biopsy of sinus mucosa was not performed.

Genotyping and phylogenetic group

Population genetics analyses of examined *E. coli* isolates by the PCR MP method showed a high level of genetic diversity. Each determined PCR MP genotype was represented only by one PCR MP pattern (data not shown). On the other hand, of the 26 analyzed isolates of *E. coli*, only 6 belonged to commensal phylogenetic group B1, and 20 (77%) belonged to the highly virulent phylogenetic group B2, (Table 1).

Pathogenic *E. coli* strains usually belong to phylogenetic groups B2 or D. They often carry a variety of virulence-associated genes (VAGs) located on pathogenicity islands (PAIs) [37]. Whereas the strains from phylogenetic group A and B1 are low-virulence and considered commensal [32, 40–43]. The results of our examination were not expected, as highly pathogenic *E. coli* would not be likely to cause chronic sinusitis in which obstructive features appear to play a key role.

Prevalence of virulence factor genes

The one-dimensional analysis (Table 1) and distribution similarity (Fig 1.) of virulence genes carried out on the pool of examined isolates from all 26 patients shows that the marker gene for forming biofilm (*agn43*), type 1 fimbriae gene (*fimG/H*), and yersiniabactin receptor (*fyuA*) were the most frequently occurring virulence factor genes (100%) (26 out of 26 in each case).

The occurrence of the *usp*, *hlyA* and *sfa* genes (19, 19 and 17 out of 26, respectively) was 73%, 73%, and 65%, respectively. Cytotoxic necrotising factor 1 (*cnf1* gene) was detected in 13 out of 26 (50%) isolates, enterobactin Iha gene (*iha*) was detected in 14 out of 26 strains (54%) and aerobactin receptor (*iutA*) in 12 out of 26 strains (46%). Only seven of the isolates tested had the capsule *kspMTIII* gene. There was an absence of Dr fimbriae coding *draC–D* genes characteristic for uropathogenic *E. coli*, which causes recurrent UTI and interstitial renal invasion. Consistent with the predicted virulence of group B2, the occurrence of the *papC*—encoding P fimbriae, *sfa*—encoding S fimbriae, *hlyA*—coding for hemolysin and, *usp* genes—encoding bacteriocin Usp (15, 14, 17 and 17 out of 20, respectively) were statistically significant in phylogenetic group B2 (P values: 0,0020; 0,0277; 0,0277, respectively), while *ibeA* and *iutA* genes were statistically significant in phylogenetic group B1 (Table 1).

The numbers (R-relation parameters) indicate the degree of relatedness of the virulence genes. A level close to $R = 0$ denotes almost identical virulence genes distribution. Moreover, pseudo-phylogenetic analysis of virulence factors that are present in patients at the level of $\geq 50\%$ allows for mathematical inference of cooperation between selected genes in the development of the disease. For example, 58% to 73% of isolates, were positive for *usp*, *hlyA*, *sfa* and *papC* genes, demarcating a strong possibility of combined action in the pathogenesis of the disease, further upheld statistically by a relatively low relation parameter $R = 0.2652$ (Fig 1). Furthermore, cumulative R parameters between 7 genes (*fimG/H*, *fyuA*, *agn43*, *usp*, *hlyA*, *sfa* and *papC*) suggest that all of them could be involved in the pathogenesis of chronic sinusitis, because R values among them are all below 0.5 (Fig 1).

Discussion

This is the first report demonstrating an association between a highly pathogenic *E. coli*, chronic sinus infection, and the resolution of symptoms upon *E. coli* targeted therapy.

Table 1. Analysis of the phylogenetic group determination and the profile of virulence factors among the *E. coli* strains isolated from patients with chronic inflammation of the maxillary sinuses.

No.	Phylogenetic group	Virulence factor													
		<i>papC</i>	<i>sfa</i>	<i>fimG/H</i>	<i>afa/dr</i>	<i>cnf1</i>	<i>usp</i>	<i>hlyA</i>	<i>kspMTII</i>	<i>iha</i>	<i>focG</i>	<i>iutA</i>	<i>fyuA</i>	<i>ibeA</i>	<i>agn43</i>
1	B1	-	-	+	-	-	-	-	-	+	-	+	+	+	+
2	B1	-	-	+	-	-	-	-	-	+	-	+	+	+	+
3	B1	-	-	+	-	-	-	-	-	+	-	+	+	+	+
4	B1	-	+	+	-	+	-	+	-	+	-	+	+	-	+
5	B1	-	+	+	-	+	+	+	-	+	-	+	+	-	+
6	B1	-	+	+	-	+	+	-	-	-	-	+	+	+	+
7	B2	-	+	+	-	+	+	+	-	+	-	-	+	-	+
8	B2	+	+	+	-	+	+	+	-	+	-	-	+	+	+
9	B2	+	-	+	-	+	-	+	+	+	-	+	+	+	+
10	B2	+	+	+	-	+	+	+	-	+	-	-	+	+	+
11	B2	+	-	+	-	+	-	+	+	+	-	+	+	-	+
12	B2	-	-	+	-	-	+	-	+	-	+	+	+	-	+
13	B2	-	-	+	-	-	-	-	-	-	-	+	+	-	+
14	B2	+	+	+	-	+	+	+	+	-	-	-	+	+	+
15	B2	+	+	+	-	-	+	+	-	+	+	+	+	-	+
16	B2	+	+	+	-	-	+	+	-	+	+	+	+	-	+
17	B2	+	+	+	-	-	+	+	-	-	-	-	+	-	+
18	B2	+	+	+	-	-	+	+	-	-	-	-	+	-	+
19	B2	-	-	+	-	+	+	-	+	+	-	-	+	+	+
20	B2	+	+	+	-	-	+	+	+	-	-	-	+	-	+
21	B2	+	+	+	-	-	+	+	-	-	+	-	+	+	+
22	B2	+	+	+	-	-	+	+	+	-	-	-	+	-	+
23	B2	-	-	+	-	+	+	+	-	-	+	-	+	-	+
24	B2	+	+	+	-	-	+	+	-	+	+	-	+	-	+
25	B2	+	+	+	-	+	+	+	-	-	-	-	+	-	+
26	B2	+	+	+	-	+	+	+	-	-	-	-	+	-	+
	<i>P</i> values	0.0020³	0.6278	1	1	0.6776	0.0277³	0.0277³	0.1456	0.1695	0.2803	0.0040²	1	0.0198²	1

papC—P fimbriae, *sfa*—S fimbriae (*sfaD/sfaE*), *fimG/H*—type 1 fimbriae (*fimG/fimH*), *afa/dr*—Dr fimbriae (*afa/draB-C*), *cnf1*—cytotoxic necrotizing factor, *usp*—bacteriocin Usp, *hlyA*—haemolysin, *kspMTII*—protein responsible for capsule formation, *iha*—enterobactin (siderophore receptor and adherence factor), *focG*—F1C fimbriae, *iutA*—aerobactin receptor, *fyuA*—yersiniabactin receptor, *ibeA*—invasive protein, *agn43*—adhesin 43 (biofilm formation). The *P* values represent associations of toxin genes with B1² and B2³ phylogenetic groups.

<https://doi.org/10.1371/journal.pone.0192899.t001>

Although at first glance one might believe the results of this study to show a correlative relationship, we propose that, because this is a clinical translational study, correlation between a specific pathogen, genotype pattern, and clinical response to treatment, show that the study results are consistent with a causal relationship.

Our data supports the hypothesis that pathogenic *E. coli* can be detected in a set of patients with chronic sinusitis not responsive to therapy. Chronic infection of the sinuses in examined patients occurred with a non-random, pathogenic *E. coli* that carried bacterial biofilm and multiple virulence coding genes. Intra-operative-biopsy and culture-based therapy targeting the detected *E. coli* coincided with long-term resolution of symptoms.

The treatment of patients with chronic sinusitis is a daily challenge due to several factors that are responsible for the patho-physiology of this disease. Environmental factors include numerous microorganisms that colonize the mucous membranes of the oro-pharynx, which

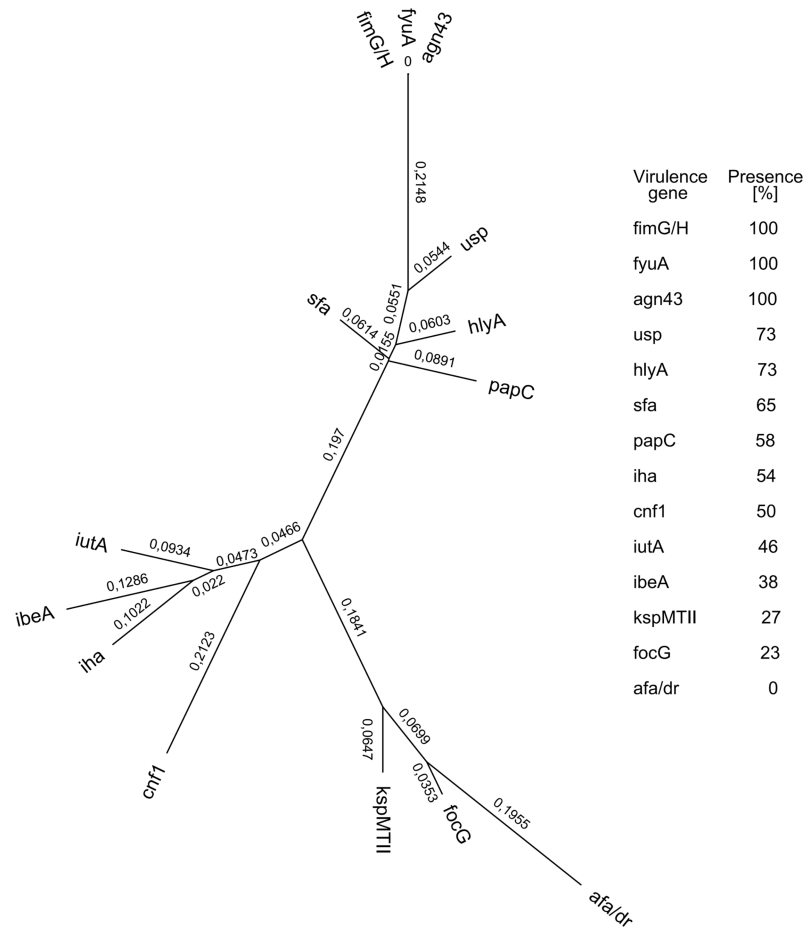


Fig 1. Pseudo-phylogenetic tree presenting virulence genes in *E. coli* strains isolated from patients with chronic inflammation of the maxillary sinuses. The values attributed to each branch (R-relation parameters) indicate the degree of correlation between the presence of virulence genes. A level close to R = 0 denotes almost identical virulence genes distribution, R = 0.5 means there is a relation between distribution of virulence genes, and a total value close to R = 1 reveals unrelated distribution of virulence genes in *E. coli* isolates.

<https://doi.org/10.1371/journal.pone.0192899.g001>

often mask the detection of the true etiologic factor responsible for the chronic sinusitis. Resolution of chronic sinusitis, following biopsy directed antibiotic therapy and FESS, suggested the contribution of *E. coli*, and perhaps its genetic make-up to be a direct causal factor of the pathogenesis of chronic sinusitis. Whether the presence of *E. coli* biofilm in patients with chronic sinusitis is responsible for poor results after surgical treatment with FESS only, remains to be investigated. We consider the hypothesis that anti-*E. coli* therapies did lead to the eradication of inflammation, because it did take into account the existence of a previously undetected pathogen.

There are limitations to this study that should be recognized. The present investigation was a study of healthcare-seeking adults, with only those included that were *E. coli* positive. Thus, the results may not apply to the rest of the population. Due to the resolution of symptoms and negative cultures, a post treatment follow-up biopsy of sinus mucosa was not performed. The prevalence of chronic sinusitis with *E. coli* vs. mixed infection (ie. *E. coli* combined with aerobes plus anaerobes) has not been well evaluated in the literature and will be a subject for our future study. Adjusting for potential risk factors, such as smoking status, is unable to be performed as a direct result of non-inclusion in the database.

The obtained results allow the theorization that there is genetic uniformity between strains of *E. coli* isolated from patients with chronic sinusitis. The correlation of virulent genotypes and the phylogenetic group B2 background for *E. coli* strains isolated from examined patients is consistent with the interpretation that chronic sinusitis was not caused by random, non-pathogenic colonizers, but rather by highly virulent *E. coli*. Although the gene profiles represented a great extent of similarity to extraintestinal-pathogenic *E. coli*, some features suggest that chronic sinusitis isolates could be unique to the sinus location [20, 25, 26]. In this context the *sfa* adhesin gene, which is associated with meningitis, could contribute to the pathogenesis of chronic sinusitis and meningitis via similar cytophysiological pathways, and further, histological similarities between target tissue based on anatomical adjacency of the CNS and paranasal sinuses. *hlyA* and *usp* genes encoding bacterial toxins were present in over 70% of the isolates, which indicates a high level virulence of these strains. Some virulent *E. coli*, due to its invasive and/or toxic/hemolytic activity may multiply in the cytoplasm of host cells and persist due to their capacity for iron acquisition, therefore contributing to the chronic process of infection [41, 38]. These factors are especially typical for a phylogenetic group B2, also in our study (*p* value. 0,0277 for each one). In contrast, lack of *dra/afa* adhesins involved in chronic/recurrent UTI and gestational pyelonephritis, stress a unique gene pattern of chronic sinusitis isolates and, perhaps more specifically, sinus tropism [25, 26].

Unexpectedly, 100% of *E. coli* isolated from examined patients carried *agn43*, *fimG/H* and *fyuA* genes, all of which are implicated in UTI. A pseudo-phylogenetic tree of virulence genes distribution revealed possible cooperation between *agn43*, *fimG/H* and *fyuA* [38, 44, 45]. These findings are significant because of their roles in biofilm formation: *agn43* contributes to *E. coli*-*E. coli* self-binding, *fim* genes, coding for type 1 fimbriae, allow for *E. coli* aggregation and adherence to mannose receptors on mucosal membranes, and the yersiniabactin receptor *fyuA* contributes to biofilm formation and iron scavenging, a virulence factor implicated in uro-septicemia. The key question remains, could these three genes, each of which independently contribute to biofilm formation, work in concert—enhancing the process of biofilm development leading to the creation of a “super”-biofilm? Such a bacterial barrier would outsmart the host, escape immune attack, and block penetration of antibiotics; creating resistant pathogens, protracted colonization, and chronic inflammation of the sinuses. In the future, we plan on full genome analysis of *E. coli* isolates, to further our understanding of virulence factors and threat level. Furthermore, experimental research and clinical trial may be necessary to evaluate strategies to disrupt the barrier formed by this biofilm. Based on our study we recommend that all patients with chronic sinusitis should be considered for intraoperative biopsy. Obtained samples should be homogenized and cultured for *E. coli*, and other potential pathogens, therefore allowing targeted therapy. We also suggest consideration of further genotyping of *E. coli* to assure that the isolated *E. coli* represent features of a virulent pathogen.

In the future, use of vaccines and attachment blockers might be an effective therapeutic consideration as the rapid spread of virulent, multi-antibiotic resistant *E. coli* becomes an emerging global health threat. For example, vaccines such as, anti-iron binding protein and anti-type 1 fimbriae, in combination with *E. coli* adherence blockers, which have been tested on colonization/invasion assays in relation to UTI and /or uro-septicemia, could be tested in chronic sinusitis for their effect on disintegration of biofilm and eradication of pathogenic *E. coli* from the sinus cavities [46, 47].

Acknowledgments

We would like to dedicate this paper to Professor Józef Kurł. He was our inspiration and motivated us to rise to the challenge of the continuous improvement of our knowledge and career growth.

All authors have contributed to, seen, and approved the final, submitted version of the manuscript. J. Kur and A. Marszałek passed away before the final version of the manuscript was created.

This study was supported by a Research Grant from the Medical Center MML, Award Number 2015–01 to J. Kur.

SYNEVO Medical Laboratories provided support in the form of salaries for authors AM and TA, but did not have any additional role in the study design, data collection and analysis, decision to publish, or preparation of the manuscript. There is no conflict of interest between the MML Medical Center, SYNEVO Medical Laboratories and Technical School of Gdansk relating to employment, consultancy, patents, products in development, and marketed products. This does not alter our adherence to PLOS ONE policies on sharing data and materials.

All authors declare no conflict of interest.

Author Contributions

Conceptualization: Michał Michalik, Alfred Samet, Stella Nowicki, Bogdan Nowicki.

Data curation: Michał Michalik, Andrzej Marszałek, Beata Krawczyk, Roman Kotłowski, Alex Nowicki, Tomasz Anyszek, Józef Kur.

Formal analysis: Andrzej Marszałek, Beata Krawczyk, Roman Kotłowski, Alex Nowicki, Tomasz Anyszek, Stella Nowicki, Józef Kur, Bogdan Nowicki.

Funding acquisition: Tomasz Anyszek, Józef Kur.

Investigation: Michał Michalik, Andrzej Marszałek, Beata Krawczyk, Alex Nowicki, Józef Kur.

Methodology: Alfred Samet, Andrzej Marszałek, Beata Krawczyk, Roman Kotłowski, Tomasz Anyszek, Józef Kur.

Project administration: Alfred Samet.

Resources: Michał Michalik, Tomasz Anyszek, Stella Nowicki.

Software: Beata Krawczyk, Roman Kotłowski, Tomasz Anyszek.

Supervision: Stella Nowicki, Bogdan Nowicki.

Validation: Andrzej Marszałek, Beata Krawczyk, Roman Kotłowski, Stella Nowicki.

Visualization: Roman Kotłowski.

Writing – original draft: Alex Nowicki, Józef Kur, Bogdan Nowicki.

Writing – review & editing: Alfred Samet, Beata Krawczyk, Roman Kotłowski, Alex Nowicki, Stella Nowicki, Bogdan Nowicki.

References

1. Halawi AM, Smith SS, Chandra RK. Chronic rhinosinusitis: epidemiology and cost. *Allergy Asthma Proc.* 2013; 34(4):328–34. <https://doi.org/10.2500/aap.2013.34.3675> PMID: 23883597
2. Ivanchenko OA, Karpishchenko SA, Kozlov RS, Krechikova OI, Otvagin IV, Sopko ON, et al. The microbiome of the maxillary sinus and middle nasal meatus in chronic rhinosinusitis. *Rhinology.* 2016; 54(1):68–74. <https://doi.org/10.4193/Rhin15.018> PMID: 26501135
3. Manes RP, Batra PS. Etiology, diagnosis and management of chronic rhinosinusitis. *Expert Rev Anti Infect Ther.* 2013; 11(1):25–35. <https://doi.org/10.1586/eri.12.151> PMID: 23428100
4. Oakley GM, Curtin K, Orb Q, Schaefer C, Orlandi RR, Alt JA. Familial risk of chronic rhinosinusitis with and without nasal polyposis: genetics or environment. *Int Forum Allergy Rhinol.* 2015; 5(4):276–82. <https://doi.org/10.1002/alr.21469> PMID: 25677865

5. Stevens WW, Lee RJ., Schleimer RP., Cohen NA. Chronic rhinosinusitis pathogenesis. *J Allergy Clin Immunol.* 2015; 136 (6) 1442–53. <https://doi.org/10.1016/j.jaci.2015.10.009> PMID: 26654193
6. Soler Z.M., Mace JC, Litvack JR, Smith TL. Chronic rhinosinusitis, race, and ethnicity. *Am J Rhinol Allergy.* 2012 Mar-Apr; 26(2):110–6. <https://doi.org/10.2500/ajra.2012.26.3741> PMID: 22487286
7. Lam K, Schleimer R, Kern RC. The Etiology and Pathogenesis of Chronic Rhinosinusitis: a Review of Current Hypotheses. *Curr Allergy Asthma Rep.* 2015 Jul; 15(7):41. <https://doi.org/10.1007/s11882-015-0540-2> PMID: 26143392
8. Udayasri B, Radhakumari T, Microbial etiology of chronic sinusitis, *JDent Med Sci.* 2016; 15(1):118–24
9. Stephenson MF, Mfunu L, Dowd SE. Molecular characterization of the polymicrobial flora in chronic rhinosinusitis. *J Otolaryngol Head Neck Surg.* 2010; 39:182–7. PMID: 20211106
10. Stressmann FA, Rogers GB, Chan SW. Characterization of bacterial community diversity in chronic rhinosinusitis infections using novel culture-independent techniques. *Am J Rhinol Allergy.* 2011; 25:e133e140.
11. Hamad WA, Matar N, Elias M. Bacterial flora in normal adult maxillary sinuses. *Am J Rhinol Allergy.* 2009; 23:261–3. <https://doi.org/10.2500/ajra.2009.23.3317> PMID: 19490798
12. Manes RP, Batra PS. Etiology, diagnosis and management of chronic rhinosinusitis. *Expert Rev Anti Infect Ther.* 2013; 11(1):25–35. <https://doi.org/10.1586/eri.12.151> PMID: 23428100
13. Długaszewska J, Leszczyńska M, Lenkowski M, Tatarska A, Pastusiak T, Szyfyer W. The pathophysiological role of bacterial biofilms in chronic sinusitis. *Eur Arch Otorhinolaryngol* 2016; 273: 1989–94. <https://doi.org/10.1007/s00405-015-3650-5> PMID: 26024693
14. Larson DA, Han JK. Microbiology of sinusitis: Does allergy or endoscopic sinus surgery affect the microbiologic flora?. *Curr Opin Otolaryngol Head Neck Surg.* 2011; 19:199–203. <https://doi.org/10.1097/MOO.0b013e328344f67a> PMID: 21358332
15. Jain R, Waldvogel-Thurlow S, Darveau R, Douglas R. Differences in the paranasal sinuses between germ-free and pathogen-free mice. *Int Forum Allergy Rhinol.* 2016; 6(6):631–7. <https://doi.org/10.1002/alr.21712> PMID: 27028583
16. Radtsig EY, Selkova EP, Malygina LV, Lapitskaia AS. The role of respiratory viruses in etiology of rhinosinusitis in the children. *Vestn Otorinolaringol.* 2014;(6):39–40. <https://doi.org/10.17116/otorino2014639-40> PMID: 25734305
17. Beule AG. Epidemiology of chronic rhinosinusitis, selected risk factors, comorbidities and economic burden. *Laryngorhinootologie.* 2015; 94 Suppl 1:S1–S23.
18. Kremer B, Jacobs JA, Soudijn ER, Johannes A, van der Ven AM. Clinical value of bacteriological examinations of nasal and paranasal mucosa in patients with chronic sinusitis. *European Arch. Oto-Rhino-Laryng.* 2001; 258(5):220–5.
19. AlMutairi D, Kilty SJ. Bacterial biofilms and pathophysiology of chronic rhinosinusitis. *Curr Opin Allergy Clin Immunol* 2011; 11:18–23. <https://doi.org/10.1097/ACI.0b013e3283423376> PMID: 21150431
20. Foreman A, Psalitis AJ, Tan LW, Wormald PJ. Characterization of bacterial and fungal biofilms in chronic rhinosinusitis. *Am J Rhinol Allergy.* 2009; 23(6):556–61. <https://doi.org/10.2500/ajra.2009.23.3413> PMID: 19958600
21. Ferguson BJ, Stolz DB. Demonstration of biofilm in human bacterial chronic rhinosinusitis. *Am J Rhinol.* 2005; 19(5):452–7. PMID: 16270598
22. Ramadan HH, Sanclement JA, Thomas JG. Chronic rhinosinusitis and biofilms. *Otolaryngol Head Neck Surg.* 2005; 132:414–7. <https://doi.org/10.1016/j.otohns.2004.11.011> PMID: 15746854
23. Puttamreddy S, Minion FC. Linkage between cellular adherence and biofilm formation in *Escherichia coli* O157:H7 EDL933. *FEMS Microbiol Lett.* 2011 Feb; 315(1):46–53. <https://doi.org/10.1111/j.1574-6968.2010.02173.x> PMID: 21166710
24. Nowicki B, Sledzinska A, Samet A, Nowicki S. Pathogenesis of gestational UTI: Urinary obstruction vs. immune adaptation and microbial virulence. *BJOG.* 2011 Jan; 118(2):109–12. <https://doi.org/10.1111/j.1471-0528.2010.02706.x> PMID: 21182597
25. Goluszko P, Moseley S, Truong LD, Kaul A, Nowicki S, Nowicki B. Development of experimental model of chronic pyelonephritis with *Escherichia coli* O75:K5:H- bearing Dr fimbriae: mutation in the dra region prevented tubulointerstitial nephritis. *J Clin Invest.* 1997; 99:1–11.
26. Kostakioti M., Hadjifrangiskou M., Hultgren SJ. Bacterial Biofilms: Development, Dispersal, and Therapeutic Strategies in the Dawn of the Postantibiotic Era. *Cold Spring Harb Perspect Med.* 2013; 3(4).
27. Zhao L, Gao S, Huan H, Xu X, Zhu X, Yang W, et al. Comparison of virulence factors and expression of specific genes between uropathogenic *Escherichia coli* and avian pathogenic *E. coli* in a murine urinary tract infection model and a chicken challenge model. *Microbiology.* 2009; 155:1634–44. <https://doi.org/10.1099/mic.0.024869-0> PMID: 19372154

28. Johnson JR, Stell AL. Extended virulence genotypes of *Escherichia coli* strains from patients with urosepsis in relation to phylogeny and host compromise. *J Infect Dis* 2000; 18:261–72.
29. Le Bouguenec C, Archambaud M, Labigne A. Rapid and specific detection of the *pap*, *afa*, and *sfa* adhesin encoding operons in uropathogenic *Escherichia coli* strains by polymerase chain reaction. *J Clin Microbiol* 1992; 30:1189–93. PMID: [1349900](#)
30. Schubert S, Rakin A, Karch H, Carniel E, Heesemann J: Prevalence of the high pathogenicity island of *Yersinia* species among *Escherichia coli* strains that are pathogenic to humans. *Infect Immun* 1998; 66:480–5. PMID: [9453599](#)
31. Krawczyk B, Samet A, Leibner J, Śledzińska A, Kur J. Evaluation of a PCR melting profile technique for bacterial strain differentiation. *J Clin Microbiol*. 2006; 44: 2327–32. <https://doi.org/10.1128/JCM.00052-06> PMID: [16825344](#)
32. Clermont O, Bonacorsi S, Bingen E. Rapid and simple determination of the *Escherichia coli* phylogenetic group. *Appl Environ Microbiol*. 2000; 66:4555–8. PMID: [11010916](#)
33. Adamus-Białek W, Wojtasik A, Majchrzak M, Sosnowski M, Parniewski P. (CGG)₄based PCR as a novel tool for discrimination of uropathogenic *Escherichia coli* strains: comparison with enterobacterial repetitive intergenic consensus PCR. *J Clin Microbiol*. 2009, 47:3937–44. <https://doi.org/10.1128/JCM.01036-09> PMID: [19846645](#)
34. Johnson JR, Stell AL.: Extended virulence genotypes of *Escherichia coli* strains from patients with urosepsis in relation to phylogeny and host compromise. *J Infect Dis*. 2000; 181:261–72. <https://doi.org/10.1086/315217> PMID: [10608775](#)
35. Johnson JR, Brown JJ, Carlino UB, Russo TA. Colonization with and acquisition of uropathogenic *Escherichia coli* as revealed by polymerase chain reaction-based detection. *J Infect Dis*. 1998; 177:1120–24. <https://doi.org/10.1086/517409> PMID: [9534997](#)
36. Schubert S, Rakin A, Karch H, Carniel E, Heesemann J. Prevalence of the “high-pathogenicity island” of *Yersinia* species among *Escherichia coli* strains that are pathogenic to humans. *Infect Immun*. 1998; 66:480–5. PMID: [9453599](#)
37. Hancock V, Ferrières L, Klemm P. The ferric yersiniabactin uptake receptor FyuA is required for efficient biofilm formation by urinary tract infectious *Escherichia coli* in human urine. *Microbiology*. 2008; 154 (1):167–75.
38. Johnson JR, Stell AL, Delavari P, Murray AC, Kuskowski M, Gaastra W. Phylogenetic and pathotypic similarities between *Escherichia coli* isolates from urinary tract infections in dogs and extraintestinal infections in humans. *J Infect Dis*. 2001; 183:897–906. <https://doi.org/10.1086/319263> PMID: [11237806](#)
39. Krawczyk B, Śledzińska A, Szemiako K, Samet A, Nowicki B, Kur J. Characterisation of *Escherichia coli* isolates from the blood of haematological adult patients with bacteraemia: translocation from gut to blood requires the cooperation of multiple virulence factors. *Eur J Clin Microbiol Infect Dis*. 2015; 34 (6):1135–43. <https://doi.org/10.1007/s10096-015-2331-z> PMID: [25655758](#)
40. Szemiako K, Krawczyk B, Samet A, Śledzińska A, Nowicki B, Nowicki S, et al. A subset of two adherence systems, acute pro-inflammatory *pap* genes and invasion coding *dra*, *fim*, or *sfa*, increases the risk of *Escherichia coli* translocation to the bloodstream. *Eur J Clin Microbiol Infect Dis*. 2013; 32 (12):1579–82. <https://doi.org/10.1007/s10096-013-1913-x> PMID: [23801304](#)
41. Kotłowski R, Bernstein CN, Sepelri S, Krause DO: High prevalence of *Escherichia coli* belonging to the B2+D phylogenetic group in inflammatory bowel disease. *Gut* 2007;(56):669–5.
42. Krawczyk B, Śledzińska A, Piekarska A, Hellmann A, Kur J. Recurrent bowel-blood translocations of *Escherichia coli* with the unique virulence characteristics over three-year period in the patient with acute myeloid leukaemia—case report. *J Appl Genet*. 2017; 58(3):415–18. <https://doi.org/10.1007/s13353-017-0393-6> PMID: [28324282](#)
43. Nowak-Zaleska A, Wieczór M, Czub J, Nierzwicki Ł, Kotłowski R, Mikucka A, et al. Correlation between the number of Pro-Ala repeats in the EmrA homologue of *Acinetobacter baumannii* and resistance to netilmicin, tobramycin, imipenem and ceftazidime. *J Glob Antimicrob Resist*. 2016; 7:145–149 <https://doi.org/10.1016/j.jgar.2016.09.004> PMID: [27835840](#)
44. Heras B1, Totsika M, Peters KM, Paxman JJ, Gee CL, Jarrott RJ, et al. The antigen 43 structure reveals a molecular Velcro-like mechanism of autotransporter-mediated bacterial clumping. *Proc Natl Acad Sci U S A*. 2014; 111(1):457–62. <https://doi.org/10.1073/pnas.1311592111> PMID: [24335802](#)
45. Mulvey MA, Lopez-Boado YS, Wilson CL, Roth R, Parks WC, Heuser J, et al. Induction and evasion of host defenses by type 1-piliated uropathogenic *Escherichia coli*. *Science*. 1998; 282(5393):1494–7. PMID: [9822381](#)
46. Mobley HLT, Alteri C J. Development of a Vaccine against *Escherichia coli* urinary tract infections. *Pathogens*. 2016; 5(1):1.
47. Spaulding CN, Hultgren SJ. Adhesive Pili in UTI pathogenesis and drug development. *Pathogens*. 2016; 5(1): 30. <https://doi.org/10.3390/pathogens5010030>