

**Keywords:** rectal cancer; plasma TERT; predictive marker; prognostic marker

# The predictive and prognostic potential of plasma telomerase reverse transcriptase (TERT) RNA in rectal cancer patients

Enrica Rampazzo<sup>1</sup>, Paola Del Bianco<sup>2</sup>, Roberta Bertorelle<sup>3</sup>, Caterina Boso<sup>4</sup>, Alessandro Perin<sup>5</sup>, Giovanna Spiro<sup>5</sup>, Francesca Bergamo<sup>6</sup>, Claudio Belluco<sup>7</sup>, Angela Buonadonna<sup>8</sup>, Elisa Palazzari<sup>9</sup>, Sara Leonardi<sup>6</sup>, Antonino De Paoli<sup>9</sup>, Salvatore Pucciarelli<sup>5</sup> and Anita De Rossi<sup>\*,1,3</sup>

<sup>1</sup>Section of Oncology and Immunology, Department of Surgery, Oncology and Gastroenterology, University of Padova, Via Gattamelata 64, Padova 35128, Italy; <sup>2</sup>Clinical Trials and Biostatistic Unit, Istituto Oncologico Veneto (IOV)-IRCCS, Via Gattamelata 64, Padova 35128, Italy; <sup>3</sup>Immunology and Molecular Oncology Unit, IOV-IRCCS, Via Gattamelata 64, Padova 35128, Italy; <sup>4</sup>Radiotherapy and Nuclear Medicine Unit, IOV-IRCCS, Via Gattamelata 64, 35128 Padova, Italy; <sup>5</sup>Section of Surgery, Department of Surgery, Oncology and Gastroenterology, Via Giustiniani 1, University of Padova, Padova 35128, Italy; <sup>6</sup>Medical Oncology Unit 1, IOV-IRCCS, Via Gattamelata 64, Padova 35128, Italy; <sup>7</sup>Department of Surgical Oncology, Centro di Riferimento Oncologico (CRO)-IRCCS, Aviano, Italy; <sup>8</sup>Department of Medical Oncology B, CRO-IRCCS, Aviano, Italy and <sup>9</sup>Radiation Oncology, CRO-IRCCS, Aviano, Italy

**Background:** Preoperative chemoradiotherapy (CRT) followed by surgery is the standard care for locally advanced rectal cancer, but tumour response to CRT and disease outcome are variable. The current study aimed to investigate the effectiveness of plasma telomerase reverse transcriptase (TERT) levels in predicting tumour response and clinical outcome.

**Methods:** 176 rectal cancer patients were included. Plasma samples were collected at baseline (before CRT = T0), 2 weeks after CRT was initiated (T1), post-CRT and before surgery (T2), and 4–8 months after surgery (T3) time points. Plasma TERT mRNA levels and total cell-free RNA were determined using real-time PCR.

**Results:** Plasma levels of TERT were significantly lower at T2 ( $P < 0.0001$ ) in responders than in non-responders. Post-CRT TERT levels and the differences between pre- and post-CRT TERT levels independently predicted tumour response, and the prediction model had an area under curve of 0.80 (95% confidence interval (CI) 0.73–0.87). Multiple analysis demonstrated that patients with detectable TERT levels at T2 and T3 time points had a risk of disease progression 2.13 (95% CI 1.10–4.11)-fold and 4.55 (95% CI 1.48–13.95)-fold higher, respectively, than those with undetectable plasma TERT levels.

**Conclusions:** Plasma TERT levels are independent markers of tumour response and are prognostic of disease progression in rectal cancer patients who undergo neoadjuvant therapy.

The identification of specific, sensitive and non-invasive approaches that facilitate early diagnosis, predict cancer recurrence and gauge the effectiveness of cancer therapy is an important target in oncology. As the dynamic nature of the circulatory system and

its constituents may reflect the host's pathological status, liquid biopsies, including analysis of circulating tumour cell-free DNA and RNA released from tumour cells, are being investigated as potential sources of non-invasive markers that could facilitate

\*Correspondence: Professor A De Rossi; E-mail: anita.derossi@unipd.it

Received 16 October 2017; revised 13 December 2017; accepted 18 December 2017; published online 15 February 2018



formulating early cancer diagnosis, making therapeutic decisions and monitoring disease progression (Gingras *et al*, 2015; Lewis *et al*, 2015; Alix-Panabières and Pantel, 2016).

The circulating mRNAs that encode telomerase reverse transcriptase (TERT) may be of particular interest in this setting. TERT, the catalytic protein of the telomerase complex that synthesises *de novo* telomere sequences using the internal telomerase RNA template (TR), extends telomeres at the ends of eukaryotic chromosomes, thus preventing cell senescence and death (Blackburn *et al*, 2006). Although TR has broad tissue distribution and is constitutively present in normal and tumour cells, TERT expression, which is usually repressed in normal somatic cells and is essential for unlimited replicative potential, has a critical role in tumour formation and progression (Hanahan and Weinberg, 2011). Several recent studies have demonstrated that TERT mRNA level in tumours is an independent prognostic marker in various types of cancers (Giunco *et al*, 2015), including colorectal cancer (Bertorelle *et al*, 2013, 2014). Notably, circulating TERT mRNA has been identified in patients with gastric (Tani *et al*, 2007; Kang *et al*, 2013), prostatic (March-Villalba *et al*, 2012), lung (Miura *et al*, 2006), and colorectal cancers (Lledó *et al*, 2004; Terrin *et al*, 2008). Evidence that circulating TERT mRNA levels reflect TERT mRNA levels in tumours (Miura *et al*, 2006; Terrin *et al*, 2008; Deblakshmi *et al*, 2015) supports the concept that circulating cell-free TERT mRNA may be a promising non-invasive biomarker in clinical practice.

Worldwide, colorectal cancer is the third most common cancer in men and the second in women. It accounts for over 9% of all cancers, with an estimated 1.4 million cases occurring in 2012 (Torre *et al*, 2016). Approximately 30% of colorectal cancer arise in the rectum (Siegel *et al*, 2014) and preoperative chemoradiotherapy (CRT) is the standard care for locally advanced rectal tumours, but response to CRT varies from complete to none (Sauer *et al*, 2004; Bosset *et al*, 2006; Gerard *et al*, 2006; Roh *et al*, 2009). Although the non-responder patients are exposed to inefficient, toxic therapy, patients with a pathological complete response to CRT show better outcomes compared with non-responders (Maas *et al*, 2010). Although identifying predictors of tumour response has become crucially important, biomarkers that are able to predict tumour response to CRT and foresee disease outcomes are for the time being unavailable (Spolverato *et al*, 2011; Lim *et al*, 2015).

Predicting tumour response to therapy has important clinical implications, not only for facilitating the selection of patients who will respond to CRT but also for modifying chemoradiation regimens and surgical procedures. A prognostic biomarker could also help to identify patients at higher risk of disease progression or recurrence, who would benefit from adjuvant therapy and intensive surveillance.

In a retrospective pilot study, conducted in a small group of rectal cancer patients who underwent CRT followed by surgery, we evaluated circulating TERT mRNA plasma levels before and after CRT. Study results showed that TERT levels fell significantly in the responders, but they remained unvaried or even rose in the non-responders, thus suggesting that plasma TERT mRNA can be a marker of tumour response to CRT (Pucciarelli *et al*, 2012). This result, together with evidence of the prognostic role of TERT mRNA levels in tumour cells of patients with colorectal cancer (Bertorelle *et al*, 2013) and the finding that circulating TERT levels reflect those in cancer specimens (Terrin *et al*, 2008) prompted us to assess the role of circulating TERT mRNA as a predictive marker of response to neoadjuvant therapy and a prognostic marker of disease progression in a larger number of patients with rectal cancer.

## PATIENTS AND METHODS

**Patients and treatment characteristics.** This study was conducted in patients with primary adenocarcinoma of the rectum, who were

enrolled in a prospective study and underwent CRT followed by total mesorectal excision at the Surgery Section, Department of Surgery, Oncology and Gastroenterology, University of Padova (87 patients), and at the Centro di Riferimento Oncologico, Aviano (89 patients). The patients' work-up included clinical history, physical examination, colonoscopy, complete blood cell count, pelvic magnetic resonance imaging, chest/abdomen computed tomography scan and carcinoembryonic antigen (CEA) determination. The criteria for receiving neoadjuvant CRT were as follows: biopsy-proven adenocarcinoma of the mid-low rectum (up to 11 cm from the anal verge), clinically staged as Tumour, Node, Metastasis (TNM) II–III or stage I low-lying rectal cancer requiring abdominoperineal resection and an Eastern Cooperative Oncology Group performance status score of 0–2. Patients received a total dose of radiotherapy  $\geq 45$  Gy (median 50.40 Gy, range 45–54 Gy) delivered with high-energy photons ( $\geq 6$  MV) at conventional fractionation (1.8 Gy per day, 5 sessions per week) and fluoropyrimidine-based chemotherapy.

Peripheral blood samples were drawn from patients at the study's time point, that is, at diagnosis, pre-CRT, (T0), 2 weeks after initiating CRT (T1), post-CRT and before (–2 to 0 day) surgery (T2) and 4–8 months after surgery (T3). Plasma samples were obtained from peripheral blood by centrifugation at 3000 r.p.m. for 10 min and aliquots were stored at  $-80^{\circ}\text{C}$  until they were analysed. Only patients with plasma samples at  $\geq 3$  time points (134 patients) or plasma samples at least at T0 and T2 time points (42 patients), for a total of 176 patients, were included in this study and represent the study group. The local Ethics Committees approved the study and each patient signed the informed consent (protocol number 35333/AO/15).

**Evaluation of pathologic tumour response.** Pathologists from the institutions involved in the study, unaware of patients' outcomes, assessed the surgical specimens. The tumours were pathologically staged according to the American Joint Committee on Cancer that established TNM staging system (Edge and Compton, 2010; Amin *et al*, 2017). The tumour response to CRT was assessed in surgical specimens by pathological examination based on Mandard's tumour regression grading (TRG) system (Mandard *et al*, 1994). Tumour regression grading was defined as follows: no residual cancer cells = TRG1; rare residual cancer cells = TRG2; fibrosis outgrowing residual cancer cells = TRG3; residual cancer cells outgrowing fibrosis = TRG4; absence of regressive changes = TRG5. In accordance with previous studies (Beddy *et al*, 2008; Pucciarelli *et al*, 2012), this classification was further simplified by considering patients classified as TRG1 and 2 as responders, and those with TRG 3 to 5 as non-responders.

**RNA extraction from plasma samples.** RNA was extracted from plasma samples as previously described (Terrin *et al*, 2008; Pucciarelli *et al*, 2012), with some modifications to improve RNA extraction. Each plasma sample (500  $\mu\text{l}$ ) was slowly thawed on ice and then mixed with 1500  $\mu\text{l}$  of Trizol LS reagent (Thermo Fisher Scientific, Waltham, MA, USA) in a 15 ml conical tube. After 5 min of incubation at room temperature, 400  $\mu\text{l}$  of chloroform were added to each sample, followed by 15 s of shaking and 15 min of incubation on ice. The samples were then centrifuged at 12 000 g for 30 min at  $4^{\circ}\text{C}$  in a J-25 Centrifuge (Beckman Coulter, Brea, CA, USA). The upper aqueous phase was transferred into a new 2 ml tube, mixed with 1 ml of isopropyl alcohol and 15  $\mu\text{l}$  of Glycogen ( $5\text{ mg ml}^{-1}$ , Thermo Fisher Scientific) and incubated overnight at  $-20^{\circ}\text{C}$  to allow for RNA precipitation. The samples were then centrifuged at 12 000 g for 1 h at  $4^{\circ}\text{C}$  in a microcentrifuge (Biofuge Stratos, Hareaus Instruments, Thermo Fisher Scientific). The supernatant was removed and the RNA pellet was washed with 1 ml 75% ethanol by centrifugation at 12 000 g for 15 min at  $4^{\circ}\text{C}$ . The ethanol was removed, the RNA pellet was dried for 5 min at room temperature and then

resuspended in 20 µl of RNase-free water. RNA was reverse-transcribed into cDNA using the SuperScript™ III RNase reverse transcriptase assay (Thermo Fisher Scientific) in a final volume of 80 µl, according to the manufacturer's instructions.

**Quantification of circulating TERT mRNA.** The expression of TERT transcripts in the plasma samples was quantified by real-time PCR, as previously described (Terrin *et al*, 2008), with some modifications. In particular, a new primer pair was designed in order to reduce the length of the amplified product, thus improving detection of the cDNA target sequence (El-Hefnawy *et al*, 2004; Spornraft *et al*, 2014). Primers AT1 (5'-CGGAA-GAGTGTCTGGAGCAA-3') and AT2b (5'-CGCAGCTG-CACCCCTTCA-3') were designed on exon 3 and 4, respectively; they bind to nucleotide sequences located upstream of the RT motif 1 on the TERT gene allowing amplification of all TERT transcripts producing an amplified product of 68 bp. The fluorogenic probe AT (FAM 5'-TTGCAAAGCATTGGAATCA-GACAGCAC-3' TAMRA) recognises the sequence located inside the product amplified by AT1/AT2b. The PCR was performed using an ABI prism 7900 Sequence Detection System (PE Applied Biosystems, Foster City, CA, USA) in 50 µl of mixture containing 25 µl 2X TaqMan Universal (PE Applied Biosystems), 100 nM of fluorogenic probe, 600 nM of primer AT1, 900 nM of primer AT2b and 10 µl of cDNA sample. After 2 min at 50 °C to allow the uracil N-glycosylase to act and a denaturation step lasting 10 min at 95 °C, 50 cycles were run, each consisting of 30 s at 95 °C, 30 s at 60 °C and 30 s at 72 °C. Each sample was run in triplicate and the mean Ct values were plotted against the standard TERT reference curve, which was generated with serial fivefold dilutions of the TERT amplicon, as previously described (Terrin *et al*, 2007). TERT values were estimated per ml according to the X 8 X 2 conversion factor and then expressed as TERT copies per ml.

Ten microlitres cDNA from each sample were also amplified for the housekeeping hypoxanthin-guanine phosphoribosyl transferase 1 (HPRT1) gene (Terrin *et al*, 2008; Pucciarelli *et al*, 2012). The forward primer HPRT1for (5'-TCAGGCAGTATAATCCAAA-GATGGT-3') was designed between exons 4 and 5, and the reverse primer HPRT1rev (5'-CTTCGTGGGGTCTTTTCAC-3') was designed on exon 6, generating a cDNA amplified product of 64 bp. The fluorogenic probe (VIC 5'-AAGGTCGCAAGCTT-3' MGBNFQ) recognises the sequence located within the products amplified by HPRT1for/HPRT1rev. PCR was performed using an ABI prism 7900 Sequence Detection System (PE Applied Biosystems) in 50 µl of mixture containing 25 µl 2 × TaqMan universal master mix (PE Applied Biosystems), 200 nM of fluorogenic probe, 900 nM of primer HPRT1for and HPRT1rev and 10 µl of cDNA sample. The thermal cycler profile consisted of 2 min at 50 °C, 10 min at 95 °C and then 45 cycles were run, each consisting of 30 s at 95 °C, 30 s at 60 °C and 30 s at and 72 °C. Each sample was run in triplicate and the mean Ct values were plotted against the standard HPRT1 reference curve, prepared using serial dilutions of the HPRT1 amplicon, as previously described (Terrin *et al*, 2008). TERT values were expressed as TERT copies per 10<sup>3</sup> HPRT1 copies.

**Quantification of circulating cell-free RNA.** To determine the amount of cell-free RNA in plasma samples, a calibration weight standard curve was constructed, as previously described (Terrin *et al*, 2008). Briefly, 1 µg of RNA (TaqMan Control Genome RNA 50 ng µl<sup>-1</sup>, Applied Biosystems) was retrotranscribed into cDNA and fivefold serially diluted in TE buffer (Tris HCl 10 mM, pH 7.6, EDTA 1 mM, pH 8.0) from 5000 to 32 pg µl<sup>-1</sup>. Ten microlitres of cDNA were collected from each dilution and amplified for the housekeeping gene HPRT1 with the HPRT1for/HPRT1rev primer pair. All samples were analysed in triplicate and the resulting median Ct values were plotted against the calibration weight curve.

The values of cell-free RNA were estimated per ml using the conversion factor X 8 X 2 and expressed as pg ml<sup>-1</sup>.

**Statistical analysis.** The data were analysed using SAS 9.4 (SAS Institute, Cary, NC, USA). The clinical and demographic characteristics of the rectal cancer patients were described according to median and interquartile range (IQR) for quantitative data, and frequencies and percentages for categorical data, and their relationship with tumour response to neoadjuvant therapy was assessed using the Kruskal–Wallis test and the  $\chi^2$ -test or Fisher's exact test, as appropriate.

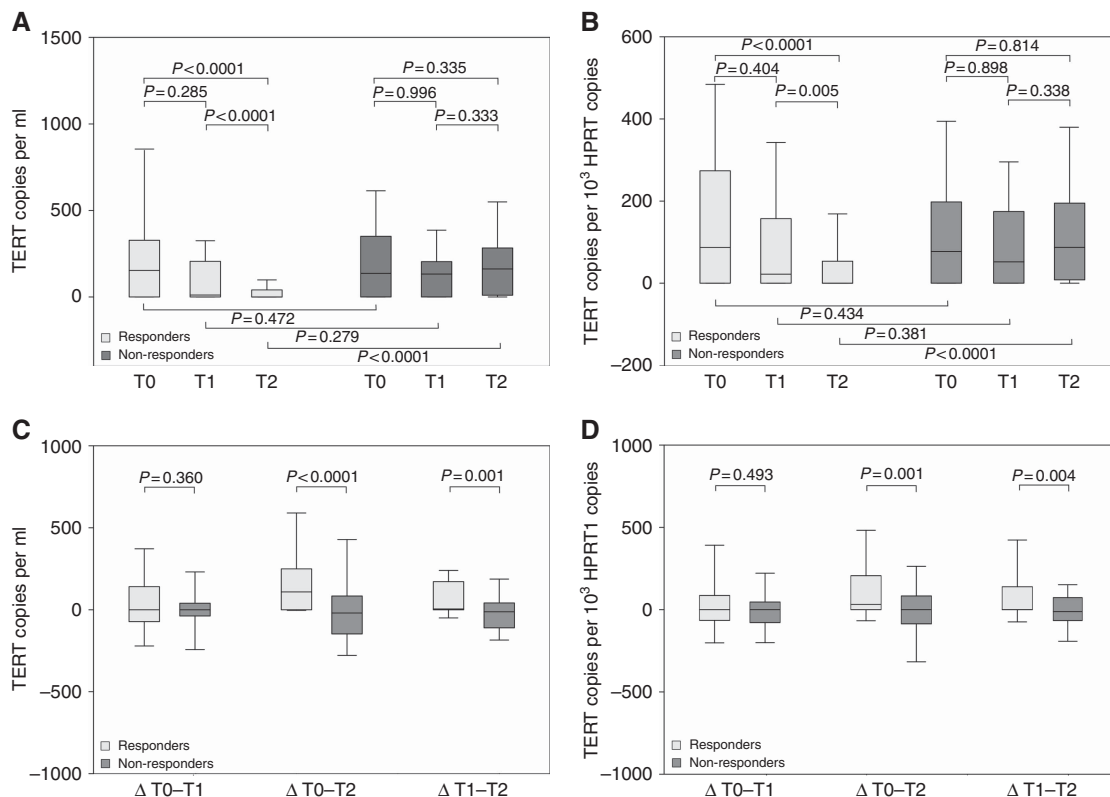
The distribution of marker (TERT, RNA and CEA) levels between responder and non-responder groups was assessed at each time point using the Kruskal–Wallis test and the pairwise comparisons between each time point within each group was assessed by the Wilcoxon's signed-rank test. A receiver operator characteristic (ROC) curve was constructed to estimate the specificity and sensitivity of the best cut-off value discriminating between responders and non-responders. Univariate logistic regression models were used to evaluate the relationship between the potential clinical and biological predictors and the tumour response; variables statistically significant at 10% level were entered into a multiple logistic model to backward select predictors that were independently associated with the response to neoadjuvant therapy. The diagnostic performance of the final multiple model was estimated with the area under curve (AUC).

The time-to-event analysis by Kaplan–Meier and the univariate Cox proportional hazard models provided the estimates of the probability of disease progression. Progression-free survival (PFS) was calculated from the date of surgery to the occurrence of relapse/progression or death. Patients who did not develop any event during the study period were censored at the date of last observation. The PFS probability was compared among strata using the log-rank test and the 5-year PFS was reported with the 95% confidence interval (CI). Separate multiple Cox proportional hazard models were developed with biological markers drawn after CRT, before surgery (T2), and 4–8 months after surgery (T3), together with clinical factors resulting significant at univariate analysis. No deviation from the proportional hazards assumption was found using the numerical methods of Lin *et al* (1993). All the statistical tests used a two-sided 5% significance level and association measures were provided with their 95% CI.

## RESULTS

**Demographic and clinical characteristics of patients.** The characteristics of the 176 patients who met the inclusion criteria are summarised in Supplementary Table 1. According to the simplified TRG classification, 74 patients (48 TRG1 and 26 TRG2) were considered responders and 102 patients (74 TRG3, 23 TRG4 and 5 TRG5) were non-responders. The responders were significantly older ( $P=0.0106$ ) and had an earlier clinical stage ( $P=0.0393$ ) than non-responders. No differences were found in any of the other baseline characteristics (Supplementary Table 1).

**Association between TERT levels and tumour response to neoadjuvant therapy.** Circulating cell-free TERT mRNA (henceforth TERT) was determined in 175 patients at T0 and in 153 patients at T2 time point; at T1, samples were available from 117 patients. At T0, TERT levels did not differ between responders and non-responders: the median (IQR) was 153 (0–325) copies per ml in responders and 137 (0–350) copies per ml in non-responders ( $P=0.472$ ) (Figure 1A). At T1, a fall in TERT levels, although not significant, was detected in responders, being TERT level 11 (0–204) copies per ml ( $P=0.285$ ), but not in non-responders, being TERT level 132 (0–208) copies per ml ( $P=0.996$ ). At T2, the TERT levels were significantly lower in the responders with respect



**Figure 1.** TERT level in responders and non-responders to neoadjuvant therapy. TERT levels in responder and non-responder patients, pre- (T0), during- (T1) and post-CRT (T2), expressed as (A) TERT copies per ml and (B) TERT copies per 10<sup>3</sup> HPRT1 copies. Differences in TERT levels in responders and non-responders, pre- and during (ΔT0-T1), pre- and post- (ΔT0-T2), during and post CRT(ΔT1-T2), expressed as (C) TERT copies per ml and (D) TERT copies per 10<sup>3</sup> HPRT1 copies. Boxes and whiskers: 25-75th and 10-90th percentiles, respectively; central line in boxes: median. TERT=telomerase reverse transcriptase.

those in non-responders (0 (0-40) copies per ml vs 162 (10-283) copies per ml,  $P < 0.0001$ ) (Figure 1A).

The results obtained when TERT levels were normalised for HPRT1 were comparable. TERT levels were 90 (0-270), 20 (0-140) and 0 (0-50) copies per 10<sup>3</sup> HPRT1 copies at T0, T1 and at T2, respectively ( $P < 0.0001$ ) in responders, and 80 (0-200), 50 (0-170) and 90 (10-190) copies per 10<sup>3</sup> HPRT1 copies at T0, T1 and at T2, respectively ( $P = 0.814$ ) in non-responders (Figure 1B). At T2, the difference between the two groups was highly significant (0 (0-50) copies per 10<sup>3</sup> HPRT1 copies vs 90 (10-190) copies per 10<sup>3</sup> HPRT1 copies,  $P < 0.0001$ ) (Figure 1B).

The differences in the TERT levels between pre- and during CRT (ΔT0-T1), during and post-CRT (ΔT1-T2) and pre- and post-CRT (ΔT0-T2) time points in the responders and the non-responders are outlined in Figure 1C; the differences between the groups were significant for ΔT0-T2 (109 (0-241) vs -20 (-148 to 84) copies per ml,  $P < 0.0001$ ) and ΔT1-T2 (5 (0-170) vs -12 (-109 to 40) copies per ml,  $P = 0.0011$ ). Similar results were obtained when TERT levels were normalised for the HPRT1 (Figure 1D).

Notably, total cell-free RNA significantly decreased only in responders: the estimated levels were 1466 (789-2491) pg ml<sup>-1</sup>, 1066 (515-1824) pg ml<sup>-1</sup> and 591 (277-1126) pg ml<sup>-1</sup> ( $P < 0.0001$ ) at T0, T1 and T2, respectively, in responders, and 1669 (960-2448) pg ml<sup>-1</sup>, 1414 (750-2452) pg ml<sup>-1</sup> and 1689 (756-3068) pg ml<sup>-1</sup> ( $P = 0.1091$ ) at T0, T1 and T2, respectively, in non-responders. Although cell-free RNA levels did not differ in the two groups at T0 ( $P = 0.8607$ ), they were statistically different at T2 ( $P < 0.0001$ ).

Carcinoembryonic antigen levels were not statistically different between responders and non-responders, neither pre-CRT

(median (IQR) 1.8 (1.0-3.2) vs 2.2 (1.2-4.08) ng ml<sup>-1</sup>,  $P = 0.1089$ ) nor post-CRT (median (IQR) 1.6 (1-2.21) vs 1.6 (1.1-2.55) ng ml<sup>-1</sup>,  $P = 0.3355$ ).

**Prediction of tumour response to neoadjuvant therapy.** Age, TERT level at T2 and TERT ΔT0-T2 were found to be significant predictors of tumour response at univariate analysis and cTNM tended to be significant ( $P = 0.0591$ ) (Table 1). Notably, the TERT level at T2 was predictive of response, both with regard to its median level and its detection (>0) or not detection (=0) (Table 1).

The ROC analysis showed that the TERT value at T2 that best discriminated between the responders and the non-responders was 90 copies per ml; with this cut-off value, the sensitivity and specificity of the assay were 91% (95% CI 81-97%) and 67% (95% CI 56-76%), respectively, with an AUC of 0.78 (95% CI 0.71-0.85) (Supplementary Figure 1A).

Carcinoembryonic antigen levels significantly decreased in both responders and non-responders, and CEA levels at both T0 (pre-CRT) and T2 (post-CRT) time points lacked any predictive value of tumour response to neoadjuvant therapy with an AUC of 0.57 (36% (95% CI 24-47%) sensitivity, 79% (95% CI 44-66%) specificity), and 0.55 (44% (95% CI 32-57%) sensitivity, 66% (95% CI 55-76%) specificity), respectively.

As prediction of tumour response after neoadjuvant therapy may also have clinical implications (with regard to alternative approaches to standard surgery, e.g., transanal local excision or observation), a multiple analysis was performed using factors that were available before surgery. It was found that TERT levels at T2 time point and TERT ΔT0-T2 independently predicted tumour response (Table 2). When the T2 TERT levels were undetectable or

**Table 1. Univariate logistic regression analysis indicating associations between covariates of interest and tumour response to neoadjuvant therapy**

	Responders/ N	%	OR	95% CI	P-value
Age (years)			1.03	1.00;1.06	0.0478
Gender					
Female	25/54	46.3	1.28	0.67;2.45	0.4477
Male	49/122	40.2	1		
Distance from anal verge (cm)			0.94	0.84;1.06	0.3177
Total radiotherapy dose (Gy)					
< 50.40	11/24	45.8	1.46	0.54;3.93	0.4564
50.40	39/91	42.9	1.29	0.63;2.64	0.4823
> 50.40	18/49	36.7	1		
Interval between CRT and surgery (days)			0.99	0.79;1.25	0.9551
Fluoropyrimidine					
Alone	42/94	44.7	1.39	0.73;2.63	0.3133
+ other drugs	25/68	36.8	1		
No	2/6	33.3	0.86	0.15;5.04	0.8672
cTNM					
I-II	15/25	60.0	2.30	0.97;5.47	0.0591
III	58/147	39.5	1		
TERT T0					
> median	39/87	44.8	1.29	0.71;2.36	0.4066
≤ median	34/88	38.6	1		
TERT T1					
≤ median	28/59	47.5	1.48	0.71;3.09	0.2985
> median	22/58	37.9	1		
TERT ΔT0-T1					
> 0	21/43	48.8	1.53	0.72;3.29	0.2708
≤ 0	28/73	38.4	1		
TERT T2					
= 0	48/69	69.6	8.38	4.03;17.41	<0.0001
> 0	18/84	21.4	1		
TERT T2					
≤ median	51/77	66.2	7.98	3.82;16.66	<0.0001
> median	15/76	19.7	1		
TERT ΔT0-T2					
> 0	41/70	58.6	3.42	1.74;6.69	0.0003
≤ 0	24/82	29.3	1		
CEA T0					
≤ median	39/86	45.3	1.22	0.66;2.24	0.5213
> median	34/84	40.5	1		
CEA T2					
≤ median	35/79	44.3	1.19	0.62;2.29	0.5957
> median	28/70	40.0	1		
CEA ΔT0-T2					
≤ 0	24/52	46.1	1.27	0.65;2.51	0.4840
> 0	39/97	40.2	1		

Abbreviations: CEA = carcinoembryonic antigen; CI = confidence interval; CRT = chemoradiotherapy; cTNM = clinical Tumour, Node, Metastasis classification; OR = odds ratio; TERT = telomerase reverse transcriptase. Notes: Median levels of TERT were 148, 98 and 42 copies per ml at T0, T1 and T2 time point, respectively. Median levels of CEA were 2.0 and 1.6 ng ml<sup>-1</sup> at T0 and T2 time point, respectively.

below the median level, the OR of tumour response was 7.84 (95% CI 3.64–16.87, *P* < 0.0001) and 8.32 (95% CI 3.80–18.20, *P* < 0.0001), respectively (Table 2). The diagnostic performance of the prediction model, assessed by the ROC curve, had an AUC of 0.80 (95% CI 0.73–0.87) (Table 2 and Supplementary Figure 1B).

**Prognostic value of TERT levels for PFS.** TERT levels at T3 (4–8 months after surgery) were available for 102 patients. The pTNM stage, TRG score and TERT levels at T2 and at T3 time points were

**Table 2. Multiple logistic regression analysis indicating associations between covariates of interest and tumour response to neoadjuvant therapy**

		OR	95% CI	P-value	AUC
<b>Model based on TERT detection or no detection at the T2 time point</b>					
Age (years)				NS	
cTNM	I-II III			NS	
TERT T2	= 0 > 0	7.84 1	3.64; 16.87	<0.0001	0.79 (95% CI: 0.73; 0.86)
TERT ΔT0-T2	> 0 ≤ 0	2.42 1	1.13; 5.20	0.0236	
<b>Model based on TERT &gt; median or ≤ median level at the T2 time point</b>					
Age (years)				NS	
cTNM	I-II III			NS	
TERT T2	≤ median > median	8.32 1	3.80; 18.20	<0.0001	0.80 (95% CI: 0.73; 0.87)
TERT ΔT0-T2	> 0 ≤ 0	2.64 1	1.23; 5.67	0.0130	
Abbreviations: AUC = area under curve; CI = confidence interval; cTNM = clinical tumour, node, metastasis classification; NS = not significant; OR = odds ratio; TERT = telomerase reverse transcriptase.					

significantly associated with PFS in the univariate analysis (Table 3). The patients' PFS curves according circulating plasma TERT levels are shown in Figure 2. At a median follow-up of 61.2 months, the 5-year PFS of the patients with detectable (> 0) or undetectable (= 0) T2 TERT levels were 58.8 % (95%CI 47.1–68.7) and 79.9 % (95% CI 67.8–87.8), respectively (*P* = 0.0008, Table 3 and Figure 2A), and with T2 TERT levels > or ≤ median level were 59.2% (95% CI 47.0–69.4) and 77.6 % (95% CI 65.9–85.7), respectively (*P* = 0.0030, Table 3 and Figure 2B). The 5-year PFS of the patients with detectable or undetectable T3 TERT levels were 53.1% (95% CI 37.6–66.3) and 90.6% (95% CI 76.6–96.4), respectively (*P* < 0.0001, Table 3 and Figure 2C). PFS curves according to pTNM and TGR scores are shown in Supplementary Figure 2A and 2B. Notably, the CEA levels after surgery (CEA T3), but not those before surgery (CEA T2), had a prognostic value (Table 3 and Supplementary Figure 2C).

The results of multiple logistic regression analysis with biological markers after CRT and prior surgery (T2), performed in the 147 patients for whom all data were available, showed that pTNM and TERT were independent prognostic factors of disease progression. Multiple analysis of biological markers 4–8 months after surgery (T3) in the 92 patients for whom all data were available disclosed that pTNM, TERT and CEA maintained their independent prognostic role (Table 4). Detection of TERT at T2 and T3 time points was associated with a risk of disease progression of 2.13 (95% CI 1.10–4.11)-fold and 4.55 (95% CI 1.48–13.95)-fold higher, respectively, with respect to patients with undetectable circulating TERT (Table 4).

**DISCUSSION**

Circulating cell-free nucleic acids constitute minimally invasive 'liquid biopsies' that are potentially useful for formulating cancer diagnosis, monitoring disease progression and guiding therapeutic decisions (Gingras *et al*, 2015; Lewis *et al*, 2015; Alix-Panabières and Pantel, 2016). The finding that TERT is activated in most tumours has opened new fields in cancer research. The results of the present study confirm the findings of a previous one showing

**Table 3. Univariate Cox regression analysis indicating associations between covariates of interest and PFS**

	Events/N	%	5-Years PFS (95% CI)	Log-rank P-value	HR	95% CI	P-value
Age (years)					0.98	0.96;1.01	0.2682
Gender							
Male	38/120	31.7	68.4 (59.0;76.2)	0.9901	1	0.57;1.76	0.9913
Female	18/54	33.3	67.2 (52.6;78.2)		1.00		
Distance from anal verge (cm)					0.98	0.89;1.09	0.7270
Total radiotherapy dose (Gy)							
<50.40	7/24	29.2	67.9 (43.6;83.5)	0.1816	1	0.35;1.80	0.5594
50.40	27/91	29.7	71.7 (61.0;79.9)		0.78		
>50.40	20/49	40.8	58.5 (42.7;71.3)		1.35		
Fluoropyrimidine							
Alone	33/94	35.1	63.2 (52.0;72.5)	0.1460	1.63	0.91;2.94	0.1002
+ other drugs	18/68	26.5	76.1 (64.0;84.6)		1		
No	3/6	50.0	33.3 (1.4;75.5)		2.55		
pTNM							
0-II	27/126	21.4	78.7 (70.1;85.2)	<0.0001	1	2.51;7.54	<0.0001
III-IV	26/39	66.7	35.9 (21.4;50.6)		4.35		
TRG							
Response	15/73	20.5	78.2 (66.3;86.3)	0.0047	1	1.27;4.17	0.0060
No response	41/101	40.6	60.0 (49.2;69.1)		2.30		
TERT T2							
=0	13/69	18.8	79.9 (67.8;87.8)	0.0008	1	1.50;5.34	0.0013
>0	36/83	43.4	58.8 (47.1;68.7)		2.83		
TERT T2							
≤ median	16/77	20.8	77.6 (65.9;85.7)	0.0030	1	1.32;4.37	0.0040
> median	33/75	44.0	59.2 (47.0;69.4)		2.40		
CEA T2							
≤ median	24/79	30.4	67.3 (55.0;76.8)	0.3684	1	0.40;1.41	0.3700
> median	16/69	23.2	76.9 (64.5;85.4)		0.75		
TERT T3							
=0= median	4/52	7.7	90.6 (76.6;96.4)	<0.0001	1	2.56;21.6	0.0002
>0	22/50	44.0	53.1 (37.6;66.3)		7.46		
CEA T3							
≤ median	7/61	11.5	86.9 (74.4;93.6)	0.0016	1	1.54;8.64	0.0032
> median	20/55	36.4	60.8 (45.7;72.9)		3.65		

Abbreviations: CEA = carcinoembryonic antigen; CI = confidence interval; HR = hazard ratio; PFS = progression-free survival; pTNM = pathological Tumour, Node, Metastasis classification; TERT = telomerase reverse transcriptase; TRG = tumour regression grade. Notes: Median levels of TERT at were 42 copies per ml and 0 copies per ml at T2 and T3 time point, respectively. Median levels of CEA were 1.6 and 1.5 ng ml<sup>-1</sup> at T2 and T3 time point, respectively.

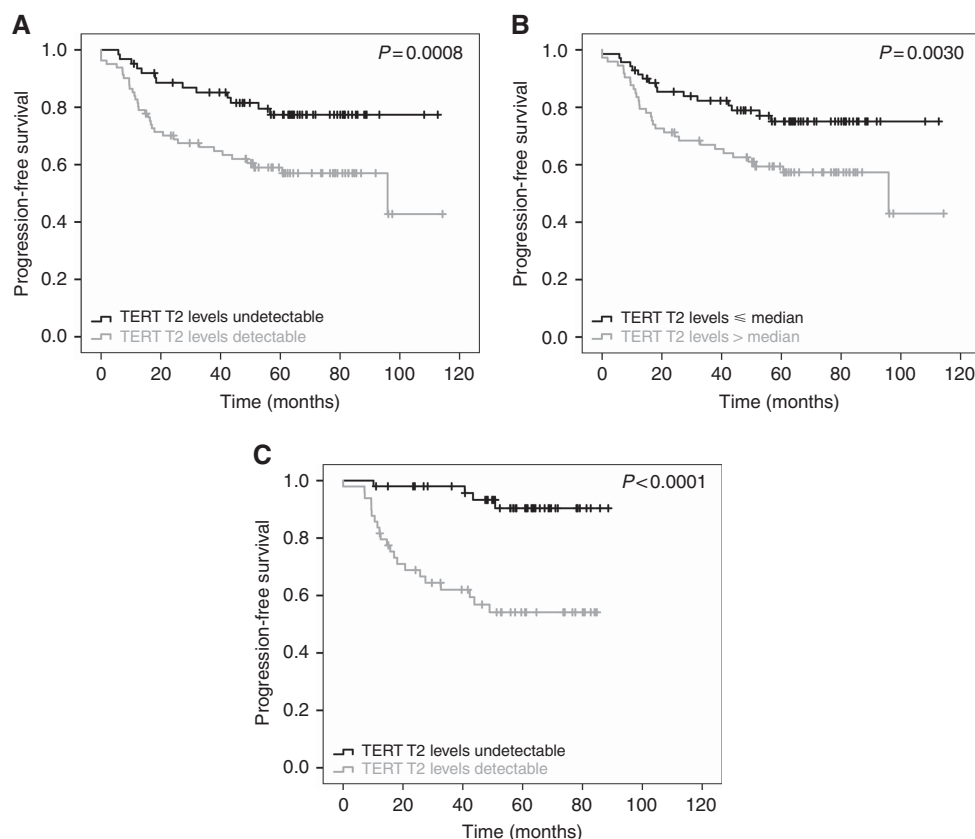
that plasma TERT mRNA can be considered a predictive marker of tumour response to neoadjuvant therapy in rectal cancer patients (Pucciarelli *et al*, 2012) and demonstrate, for the first time to our knowledge, its prognostic value of disease progression in such patients.

The expression of TERT is usually absent in non-neoplastic tissues but inappropriately activated in most tumours; its detection can thus be considered a specific marker of an ongoing neoplastic process (Hanahan and Weinberg, 2011). A large number of studies, including our own (Terrin *et al*, 2007, Rampazzo *et al*, 2012; Bertorelle *et al*, 2013; Boscolo-Rizzo *et al*, 2015; Rampazzo *et al*, 2017), demonstrated that TERT is a prognostic marker of disease outcome for many types of lymphoid and solid malignancies (Giunco *et al*, 2015). In addition, it has been demonstrated that circulating TERT levels can be detected in the plasma of colorectal cancer patients (Lledó *et al*, 2004, Terrin *et al* 2008) and are significantly correlated with those in tumour specimens (Terrin *et al*, 2008), thus suggesting that plasma TERT may be a useful non-invasive marker for detecting and monitoring the disease.

The neoadjuvant therapy approach followed by mesorectal excision has become the standard treatment for patients with locally advanced rectal cancer (NCCN guidelines, 2017); however, about 20% of patients are overtreated (Sauer *et al*, 2004). Moreover, although ~60% of patients have a moderate-poor response to this approach, about 20% of patients show a complete pathologic response, which translates into much better clinical outcomes with

respect to non-responders (Maas *et al*, 2010). In the last years, several prospective studies have suggested organ-sparing approaches for patients with major or complete clinical responses (Habr-Gama *et al*, 2004; Belluco *et al*, 2011; Bujko *et al*, 2013; Pucciarelli *et al*, 2013; Appelt *et al*, 2015). The advisability of adjuvant chemotherapy in patients with good response to neoadjuvant therapy continues to be a subject of debate. Given these considerations, there is a strong interest to identify biomarkers that are predictors of tumour response and prognostic of disease outcome in order to improve selection of those patients who could benefit from neoadjuvant or adjuvant treatments, who could avoid surgery altogether or who could be spared unnecessary and toxic treatment. Unfortunately, although many clinical, pathological, and molecular markers have been investigated as predictors of tumour response and prognosis, none of them have gained wide acceptance in clinical practice (Spolverato *et al*, 2011; Lim *et al*, 2015). Identifying in this scenario circulating biomarkers predictive of tumour response would be an important step forward in monitoring these patients in a minimally invasive way.

As demonstrated in a previous study (Pucciarelli *et al*, 2012), plasma TERT levels after completion of CRT (time point T2), but not those at baseline, were strongly predictive of tumour response. The results of the present study, characterised by a larger number of patients and an additional time point, that is, during CRT, have confirmed that TERT is an independent predictive marker and that plasma TERT levels tended to fall in responders, but not in non-responders soon after CRT is



**Figure 2.** PFS according to TERT level. Kaplan–Meier curves for PFS according to (A) detectable or undetectable TERT T2 level before surgery, (B) TERT T2 levels  $\leq$  or  $>$  median level (42 copies per ml) before surgery and (C) detectable or undetectable TERT T3 level after surgery. PFS=Progression-free survival; TERT=telomerase reverse transcriptase.

initiated. Multiple analysis showed that of the potential predictors available before surgery, post-CRT TERT levels and the variation of pre-post CRT TERT levels were independent predictors, with an AUC 0.80. Models that combined functional imaging with positron emission tomography, clinical data and blood biomarkers (CEA, IL-8 and osteopontin) had an AUC of 0.81 for a complete pathological response, and the model based on biomarkers only had an AUC of  $<0.70$  (Buijssen *et al*, 2014). New studies foreseeing additional assessment time points during CRT and integrating plasma markers (e.g., TERT), endoscopy, imaging modalities and clinical evaluation could lead to greater sensitivity and specificity in managing individual patient.

As regards CEA, several studies, most using  $5 \text{ ng ml}^{-1}$  as cut-off, have demonstrated that low levels were associated with a tumour response (Moureau-Zabotto *et al*, 2011; Tural *et al*, 2013; Buijssen *et al*, 2014). Preoperative CEA levels cannot, however, be used to stratify treatment strategies as they lack sensitivity and specificity (Lim *et al*, 2015). In the present study, neither pre- nor post-CRT CEA levels were able to predict tumour response to neoadjuvant therapy. Only 27 patients had at baseline CEA levels higher than  $5 \text{ ng ml}^{-1}$ ; even using this cut-off, no association was found between CEA levels and tumour response (data not shown).

Of interest, circulating TERT level were also found to an independent prognostic marker of disease outcome. Although pathologic tumour staging is of the utmost importance in rectal cancer patients, it provides only limited prognostic information and the risk of disease progression cannot be foreseen, even in patients at the same tumour stage. This may reflect the molecular and biological heterogeneity of rectal cancers, and highlight the need for prognostic markers able to stratify patients.

Plasma TERT levels, to the best of our knowledge, have never been evaluated as prognostic marker in rectal cancer patients.

Previous studies have indicated that telomerase activity and/or TERT expression rose along with tumour progression in colorectal cancer (Maláska *et al*, 2004; Terrin *et al*, 2008; Rampazzo *et al*, 2010; Kojima *et al*, 2011), and it is generally agreed that high levels of TERT and/or telomerase activity in tumour specimens are associated with poor prognosis (Bertorelle *et al*, 2014). Higher levels of TERT may be able to compensate for the greater shortening of telomeres, due to high proliferative activity. Beyond preserving telomere length, TERT might also increase the tumour's malignant potential by acting as a growth-promoting and anti-apoptotic factor (Rampazzo *et al*, 2012; Saretzki, 2014; Celeghin *et al*, 2016). In a series of colorectal cancers (stage I to stage IV), the plasma TERT levels correlated with those in tumours, both when expressed as copies per ml and when normalised against HPRT1 (Terrin *et al*, 2008). The circulating TERT levels may reflect those in the corresponding cancer specimens.

In agreement with other data (Mass *et al*, 2010; Lim *et al*, 2015), we observed that patients with a good response to neoadjuvant therapy also had a better prognosis with respect to non-responder patients. The prognostic value of TRG was not, however, confirmed by multiple analysis. In addition, circulating CEA levels quantified several months after surgery, but not those before surgery, had an independent prognostic value. Multiple Cox regression analyses showed that only pathologic staging and plasma TERT levels were independent prognostic factors both at surgery and afterwards. This finding is important as TERT level at the time of surgery could assist in selecting patients who would benefit from adjuvant chemotherapy.

In conclusion, the results of this study have confirmed that levels of TERT and their variations pre-post neoadjuvant therapy are predictive biomarkers of tumour response in rectal cancer patients who undergo CRT. They also showed that TERT levels before and

**Table 4. Multiple Cox regression analysis indicating associations between covariates of interest and progression-free survival**

		HR	95% CI	P-value
<b>(A) TERT levels before surgery</b>				
TERT levels = or >0				
pTNM	0-II III-IV	1 3.70	2.04; 6.73	<0.0001
TRG	Response No response			NS
TERT T2	= 0 >0	1 2.13	1.10; 4.11	0.0242
TERT levels < or >median				
pTNM	0-II III-IV	1 3.89	2.16; 7.02	<0.0001
TRG	Response No response			NS
TERT T2	≤median >median	1 2.08	1.12; 3.87	0.0212
<b>(B) TERT levels after surgery</b>				
TERT levels = or >0				
pTNM	0-II III-IV	1 3.01	1.25; 7.28	0.0144
TRG	Response No response			NS
TERT T3	=0 median >0	1 4.55	1.48; 13.95	0.0081
CEA T3	≤median >median	1 3.22	1.24; 8.35	0.0162
Abbreviations: CEA = carcinoembryonic antigen; CI = confidence interval; HR = hazards ratio; pTNM = pathological tumour, node, metastasis classification; TERT = telomerase reverse transcriptase; TRG = tumour regression grade. Notes: The models were developed using TERT levels before surgery (A) or after surgery (B). CEA was included in the model B because CEA levels at T3 time point were significant in the univariate analysis.				

after surgery are independent prognostic markers of disease outcome. Further studies, including standardised methods of RNA extraction and quantification, and standardised assay(s) to quantify TERT, are important to validate the predictive and prognostic roles of plasma TERT level, and to ascertain its reliability as a circulating biomarker to monitor in a minimally invasive way the response to therapy and the disease outcome in cancer patients.

**ACKNOWLEDGEMENTS**

This study was supported by Ricerca Finalizzata Ministero della Salute, Grant number RF-2011-02349645 and Istituto Oncologico Veneto, Grant 5 x1000. RE is a fellow recipient fellow of Grant number RF-2011-02349645

**CONFLICT OF INTEREST**

The authors declare no conflict of interest.

**REFERENCES**

Alix-Panabières C, Pantel K (2016) Clinical applications of circulating tumor cells and circulating tumor DNA as liquid biopsy. *Cancer Discov* 6(5): 479–491.  
 Amin MB, Greene FL, Edge SB, Compton CC, Gershenwald JE, Brookland RK, Meyer L, Gress DM, Byrd DR, Winchester DP. (2017) The Eighth

Edition AJCC Cancer Staging Manual: continuing to build a bridge from a population-based to a more “personalized” approach to cancer staging. *CA Cancer J Clin* 67(2): 93–99.  
 Appelt AL, Pløen J, Harling H, Jensen FS, Jensen LH, Jørgensen JC, Lindebjerg J, Rafaelsen SR, Jakobsen A (2015) High-dose chemoradiotherapy and watchful waiting for distal rectal cancer: a prospective observational study. *Lancet Oncol* 16(8): 919–927.  
 Beddy D, Hyland JM, Winter DC, Lim C, White A, Moriarty M, Armstrong J, Fennelly D, Gibbons D, Sheahan K (2008) A simplified tumor regression grade correlates with survival in locally advanced rectal carcinoma treated with neoadjuvant chemoradiotherapy. *Ann Surg Oncol* 15(12): 3471–3477.  
 Belluco C, De Paoli A, Canzonieri V, Sigon R, Fornasari M, Buonadonna A, Boz G, Innocente R, Perin T, Cossaro M, Polesel J, De Marchi F (2011) Long-term outcome of patients with complete pathologic response after neoadjuvant chemoradiation for cT3 rectal cancer: implications for local excision surgical strategies. *Ann Surg Oncol* 18(13): 3686–3693.  
 Bertorelle R, Briarava M, Rampazzo E, Biasini L, Agostini M, Maretto I, Lonardi S, Friso ML, Mescoli C, Zagonel V, Nitti D, De Rossi A, Pucciarelli S (2013) Telomerase is an independent prognostic marker of overall survival in patients with colorectal cancer. *Br J Cancer* 108(2): 278–284.  
 Bertorelle R, Rampazzo E, Pucciarelli S, Nitti D, De Rossi A (2014) Telomeres, telomerase and colorectal cancer. *World J Gastroenterol* 20(8): 940–1950.  
 Blackburn EH, Greider CW, Szostak JW (2006) Telomeres and telomerase: the path from maize, Tetrahymena and yeast to human cancer and aging. *Nat Med* 12: 1133–1138.  
 Boscolo-Rizzo P, Rampazzo E, Perissinotto E, Piano MA, Giunco S, Baboci L, Spinato G, Spinato R, Tirelli G, Da Mosto MC, Del Mistro A, De Rossi A (2015) Telomere shortening in mucosa surrounding the tumor: biosensor of field cancerization and prognostic marker of mucosal failure in head and neck squamous cell carcinoma. *Oral Oncol* 51(5): 500–507.  
 Bosset JF, Collette L, Calais G, Mineur L, Maingon P, Radosevic-Jelic L, Daban A, Bardet E, Beny A, Ollier JC (2006) Chemotherapy with preoperative radiotherapy in rectal cancer. *N Engl J Med* 355(11): 1114–1123.  
 Buijssen J, van Stiphout RG, Menheere PP, Lamminger G, Lambin P. (2014) Blood biomarkers are helpful in the prediction of response to chemoradiation in rectal cancer: a prospective, hypothesis driven study on patients with locally advanced rectal cancer. *Radiother Oncol* 111(2): 237–242.  
 Bujko K, Richter P, Smith FM, Polkowski W, Szczepkowski M, Rutkowski A, Dziki A, Pietrzak L, Kołodziejczyk M, Kuśnierz J, Gach T, Kulig J, Nawrocki G, Radziszewski J, Wierzbicki R, Kowalska T, Meissner W, Radkowski A, Paprota K, Polkowski M, Rychter A (2013) Preoperative radiotherapy and local excision of rectal cancer with immediate radical reoperation for poor responders: a prospective multicentre study. *Radiother Oncol* 106(2): 198–205.  
 Celeghin A, Giunco S, Freguja R, Zangrossi M, Nalio S, Dolcetti R, De Rossi A (2016) Short-term inhibition of TERT induces telomere length-independent cell cycle arrest and apoptotic response in EBV-immortalized and transformed B cells. *Cell Death Dis* 7(12): e2562.  
 Deblakshmi RK, Deka M, Saikia AK, Sharma BK, Singh N, Das NN, Bose S (2015) Prognostic relevance of human telomerase reverse transcriptase (hTERT) expression in patients with gall bladder disease and carcinoma. *Asian Pac J Cancer Prev* 16(7): 2923–2928.  
 Edge SB, Compton CC (2010) The American Joint Committee on Cancer: the 7th Edition of the AJCC Cancer Staging Manual and the Future of TNM. *Ann Surg Oncol* 17(6): 1471–1474.  
 El-Hefnawy T, Raja S, Kelly L, Bigbee WL, Kirkwood JM, Luketich JD (2004) Characterization of amplifiable, circulating RNA in plasma and its potential as a tool for cancer diagnostics. *Clin Chem* 50(3): 564–573.  
 Gerard JP, Conroy T, Bonnetain F, Bouche O, Chapet O, Closon-Dejardin MT, Untereiner M, Leduc B, Francois E, Maurel J, Seitz JF, Buecher B, Mackiewicz R, Ducreux M, Bedenne L (2006) Preoperative radiotherapy with or without concurrent fluorouracil and leucovorin in T3-4 rectal cancers: results of FFCD 9203. *J Clin Oncol* 24(28): 4620–4625.  
 Gingras I, Salgado R, Ignatiadis M (2015) Liquid biopsy: will it be the ‘magic tool’ for monitoring response of solid tumors to anticancer therapies? *Curr Opin Oncol* 27(6): 560–567.  
 Giunco S, Rampazzo E, Celeghin A, Petrara MR, De Rossi A (2015) Telomere and telomerase in carcinogenesis: their role as prognostic biomarkers. *Curr Pathobiol Rep* 3(4): 315–328.  
 Habr-Gama A, Perez RO, Nadalin W, Sabbaga J, Ribeiro Jr U, Silva e Sousa Jr AH, Campos FG, Kiss DR, Gama-Rodrigues J (2004) Operative versus nonoperative treatment for stage 0 distal rectal cancer following chemoradiation therapy: long-term results. *Ann Surg* 240(4): 711–717.



- Hanahan D, Weinberg RA (2011) Hallmarks of cancer: the next generation. *Cell* **144**(5): 646–674.
- Kang Y, Zhang J, Sun P, Shang J (2013) Circulating cell-free human telomerase reverse transcriptase mRNA in plasma and its potential diagnostic and prognostic value for gastric cancer. *Int J Clin Oncol* **18**(3): 478–486.
- Kojima K, Hiyama E, Otani K, Ohtaki M, Fukuba I, Fukuda E, Sueda T, Hiyama K (2011) Telomerase activation without shortening of telomeric 3'-overhang is a poor prognostic factor in human colorectal cancer. *Cancer Sci* **102**(2): 330–335.
- Lewis JM, Heineck DP, Heller MJ (2015) Detecting cancer biomarkers in blood: challenges for new molecular diagnostic and point-of-care tests using cell-free nucleic acids. *Expert Rev Mol Diagn* **15**(9): 1187–1200.
- Lim SH, Chua W, Henderson C, Ng W, Shin JS, Chantrill L, Asghari R, Lee CS, Spring KJ, de Souza P (2015) Predictive and prognostic biomarkers for neoadjuvant chemoradiotherapy in locally advanced rectal cancer. *Crit Rev Oncol Hematol* **96**(1): 67–80.
- Lin D, Wei LJ, Ying Z (1993) Checking the Cox model with cumulative sums of Martingale-based residuals. *Biometrika* **80**: 557–572.
- Lledó SM, García-Granero E, Dasí F, Ripoli R, García SA, Cervantes A, Aliño SF (2004) Real time quantification in plasma of human telomerase reverse transcriptase (hTERT) mRNA in patients with colorectal cancer. *Colorectal Dis* **6**(4): 236–242.
- Maas M, Nelemans PJ, Valentini V, Das P, Rödel C, Kuo LJ, Calvo FA, García-Aguilar J, Glynne-Jones R, Haustermans K, Mohiuddin M, Pucciarelli S, Small Jr W, Suárez J, Theodoropoulos G, Biondo S, Beets-Tan RG, Beets GL (2010) Long-term outcome in patients with a pathological complete response after chemoradiation for rectal cancer: a pooled analysis of individual patient data. *Lancet Oncol* **11**(9): 835–844.
- Maláska J, Kunická Z, Borský M, Sklenicková M, Novotná M, Fajkusová L, Zaloudik J, Fajkus J (2004) Telomerase as a diagnostic and predictive marker in colorectal carcinoma. *Neoplasma* **51**: 90–96.
- Mandard AM, Dalibard F, Mandard JC, Marnay J, Henry-Amar M, Petiot JF, Roussel A, Jacob JH, Segol P, Samama G (1994) Pathologic assessment of tumor regression after preoperative chemoradiotherapy of esophageal carcinoma. Clinicopathologic correlations. *Cancer* **73**(11): 2680–2686.
- March-Villalba JA, Martínez-Jabaloyas JM, Herrero MJ, Santamaria J, Aliño SF, Dasí F (2012) Cell-free circulating plasma hTERT mRNA is a useful marker for prostate cancer diagnosis and is associated with poor prognosis tumor characteristics. *PLoS ONE* **7**(8): e43470.
- Miura N, Nakamura H, Sato R, Tsukamoto T, Harada T, Takahashi S, Adachi Y, Shomori K, Sano A, Kishimoto Y, Ito H, Hasegawa J, Shiota G (2006) Clinical usefulness of serum telomerase reverse transcriptase (hTERT) mRNA and epidermal growth factor receptor (EGFR) mRNA as a novel tumor marker for lung cancer. *Cancer Sci* **97**(12): 1366–1373.
- Moureau-Zabotto L, Farnault B, de Chaisemartin C, Esterni B, Lelong B, Viret F, Giovannini M, Monges G, Delperro JR, Bories E, Turrini O, Viens P, Salem N (2011) Predictive factors of tumor response after neoadjuvant chemoradiation for locally advanced rectal cancer. *Int J Radiat Oncol Biol Phys* **80**(2): 483–491.
- NCCN Clinical Practice Guidelines in Oncology – Rectal Cancer Version 3 (2017) [https://www.nccn.org/professionals/physician\\_gls/default.aspx](https://www.nccn.org/professionals/physician_gls/default.aspx).
- Pucciarelli S, Rampazzo E, Briarava M, Maretto I, Agostini M, Digito M, Keppel S, Friso ML, Lonardi S, De Paoli A, Mescoli C, Nitti D, De Rossi A (2012) Telomere-specific reverse transcriptase (hTERT) and cell-free RNA in plasma as predictors of pathologic tumor response in rectal cancer patients receiving neoadjuvant chemoradiotherapy. *Ann Surg Oncol* **19**(9): 3089–3096.
- Pucciarelli S, De Paoli A, Guerrieri M, La Torre G, Maretto I, De Marchi F, Mantello G, Gambacorta MA, Canzonieri V, Nitti D, Valentini V, Coco C (2013) Local excision after preoperative chemoradiotherapy for rectal cancer: results of a multicenter phase II clinical trial. *Dis Colon Rectum* **56**(12): 1349–1356.
- Rampazzo E, Bertorelle R, Serra L, Terrin L, Candiotti C, Pucciarelli S, Del Bianco P, Nitti D, De Rossi A (2010) Relationship between telomere shortening, genetic instability, and site of tumour origin in colorectal cancers. *Br J Cancer* **102**(8): 1300–1305.
- Rampazzo E, Bonaldi L, Trentin L, Visco C, Keppel S, Giunco S, Frezzato F, Facco M, Novella E, Giaretta I, Del Bianco P, Semenzato G, De Rossi A (2012) Telomere length and telomerase levels delineate subgroups of B-cell chronic lymphocytic leukemia with different biological characteristics and clinical outcomes. *Haematologica* **97**(1): 56–63.
- Rampazzo E, Bojnik E, Trentin L, Bonaldi L, Del Bianco P, Frezzato F, Visentin A, Facco M, Semenzato G, De Rossi A (2017) Role of *miR-15a/miR-16-1* and the *TP53* axis in regulating telomerase expression in chronic lymphocytic leukemia. *Haematologica* **102**(7): e253–e256.
- Roh MS, Colangelo LH, O'Connell MJ, Yothers G, Deutsch M, Allegra CJ, Kahlerberg MS, Baez-Diaz L, Ursiny CS, Petrelli NJ, Wolmark N (2009) Preoperative multimodality therapy improves disease-free survival in patients with carcinoma of the rectum: NSABP R-03. *J Clin Oncol* **27**(31): 5124–5130.
- Saretzki G (2014) Extra-telomeric functions of human telomerase: cancer, mitochondria and oxidative stress. *Curr Pharm Des* **20**(41): 6386–6403.
- Sauer R, Becker H, Hohenberger W, Rodel C, Wittekind C, Fietkau R, Martus P, Tschmelitsch J, Hager E, Hess CF, Karstens JH, Liersch T, Schmidberger H, Raab R (2004) Preoperative versus postoperative chemoradiotherapy for rectal cancer. *N Engl J Med* **351**(17): 1731–1740.
- Siegel R, Desantis C, Jemal A. Colorectal cancer statistics (2014) *CA Cancer J Clin* **64**(2): 104–117.
- Spolverato G, Pucciarelli S, Bertorelle R, De Rossi A, Nitti D (2011) Predictive factors of the response of rectal cancer to neoadjuvant radiochemotherapy. *Cancers* **3**(2): 2176–2194.
- Spornraft M, Kirchner B, Haase B, Benes V, Pfaffl MW, Riedmaier I (2014) Optimization of extraction of circulating RNAs from plasma—enabling small RNA sequencing. *PLoS ONE* **9**(9): e107259.
- Tani N, Ichikawa D, Ikoma D, Tomita H, Sai S, Ikoma H, Okamoto K, Ochiai T, Ueda Y, Otsuji E, Yamagishi H, Miura N, Shiota G (2007) Circulating cell-free mRNA in plasma as a tumor marker for patients with primary and recurrent gastric cancer. *Anticancer Res* **27**(2): 1207–1212.
- Terrin L, Trentin L, Degan M, Corradini I, Bertorelle R, Carli P, Maschio N, Bo MD, Noventa F, Gattei V, Semenzato G, De Rossi A (2007) Telomerase expression in B-cell chronic lymphocytic leukemia predicts survival and delineates subgroups of patients with the same IgVH mutation status and different outcome. *Leukemia* **21**(5): 965–967.
- Terrin L, Rampazzo E, Pucciarelli S, Agostini M, Bertorelle R, Esposito G, Del Bianco P, Nitti D, De Rossi A (2008) Relationship between tumor and plasma levels of hTERT mRNA in patients with colorectal cancer: implications for monitoring of neoplastic disease. *Clin Cancer Res* **14**(22): 7444–7451.
- Torre LA, Siegel RL, Ward EM, Jemal A (2016) Global cancer incidence and mortality rates and trends—an update. *Cancer Epidemiol Biomarkers Prev* **25**(1): 16–27.
- Tural D, Selcukbiricik F, Öztürk MA, Yildiz O, Turna H, Erdamar S, Büyükkünal E, Serdengeçti S (2013) The relation between pathological complete response and clinical outcome in patients with rectal cancer. *Hepatogastroenterology* **60**(126): 1365–1370.



This work is licensed under the Creative Commons Attribution-Non-Commercial-Share Alike 4.0 International License. To view a copy of this license, visit <http://creativecommons.org/licenses/by-nc-sa/4.0/>

© The Author(s) named above 2018

Supplementary Information accompanies this paper on British Journal of Cancer website (<http://www.nature.com/bjc>)