

Zebrafish Fins as a Model System for Skeletal Human Studies

Manuel Marí-Beffa^{1,*}, Jesús A. Santamaría¹, Carmen Murciano¹, Leonor Santos-Ruiz¹, José A. Andrades¹, Enrique Guerado², and José Becerra¹

¹Department of Cell Biology, Genetics and Physiology, Faculty of Science, University of Málaga, Louis Pasteur Avenue, 29071-Málaga, Spain; ²Hospital Costa del Sol, Division of Orthopaedic Surgery and Traumatology, 29600-Marbella, Spain

E-mail: beffa@uma.es; santamaría@uma.es; lsantos@uma.es; andrades@uma.es; becerra@uma.es

Received April 6, 2006; Revised May 11, 2007; Accepted June 1, 2007; Published July 3, 2007

Recent studies on the morphogenesis of the fins of *Danio rerio* (zebrafish) during development and regeneration suggest that a number of inductive signals involved in the process are similar to some of those that affect bone and cartilage differentiation in mammals and humans. Akimenko et al. (2002) has shown that bone morphogenetic protein-2b (BMP2b) is involved in the induction of dermal bone differentiation during fin regeneration. Many other groups have also shown that molecules from the transforming growth factor-beta superfamily (TGF β), including BMP2, are effective in promoting chondrogenesis and osteogenesis *in vivo* in higher vertebrates, including humans. In the present study, we review the state of the art of this topic by a comparative analysis of skeletal tissue development, regeneration and renewal processes in tetrapods, and fin regeneration in fishes. A general conclusion of this study states that lepidotrichia is a special skeletal tissue different to cartilage, bone, enamel, or dentine in fishes, according to its extracellular matrix (ECM) composition. However, the empirical analysis of inducing signals of skeletal tissues in fishes and tetrapods suggests that lepidotrichia is different to any responding features with main skeletal tissues. A number of new inductive molecules are arising from fin development and regeneration studies that might establish an empirical basis for further molecular approaches to mammal skeletal tissues differentiation. Despite the tissue dissimilarity, this empirical evidence might finally lead to clinical applications to skeletal disorders in humans.

KEYWORDS: bone, regeneration, vertebrates, actinopterygian fishes, mammals, humans, cell therapy, mesenchymal stem cells, bone morphogenetic proteins, transforming growth factor beta, sonic hedgehog, intramembranous ossification, endochondral ossification, ray dermal bone, lepidotrichia, extracellular matrix, collagen, osteocyte, scleroblast, bone repair, bone regeneration, regenerative medicine, enamel, dentine

INTRODUCTION

One of the main goals of evo-devo synthesis is the search for genetic and molecular embryological synapomorphies to support systematics at a molecular level. For this purpose, some authors have

*Corresponding author.

©2007 with author.

Published by TheScientificWorld; www.thescientificworld.com

attempted to describe the phylogenetic relationship among the main types of skeletal tissues[1,2]. There are four main types of skeletal tissues: bone, cartilage, enamel, and dentine[3]. In order to extend this analysis to all skeletal tissues, we will focus our analysis on the actinopterygian fins skeleton, using zebrafish as a model system. Actinopterygian ray-fins are composed of three different types of skeletal structures: basal endochondral bone, lepidotrichia (the distal ray dermal bone skeleton [Fig. 1.A]), and actinotrichia. Previous papers have considered that lepidotrichia is similar to enamel, but not to dentine[4]. Further studies suggest that dental tissues and dermal skeletal tissues are distant in evolutionary terms[2]. Other studies propose that lepidotrichia is similar to cartilage, based on its collagen fibrils[5] and collagen-proteoglycan interactions[6]. Recent molecular studies[7,8] finally suggest that lepidotrichia is similar to both cartilage and bone. We discuss these possibilities in search of general arguments for a comparative molecular histology of skeletal tissues in fishes.

We shall review the composition and architecture of the extracellular matrix (ECM) of the lepidotrichia of zebrafish fins[7] and compare it with that of cartilage, bone[8], enamel, and dentine in fishes[9,10]. This study will be extended to how different skeletal tissues respond under a variety of experimental conditions[11,12].

Amphibians, chicks, and several mammals are model systems used in the search for molecular mechanisms that control skeletal tissues formation[13,14,15,16]. Nowadays, clinical treatments of skeletal disorders are based on experiments carried out in these species, especially in mammals. Cells of the chondrogenic and osteogenic lineages can be isolated and following *in vitro* manipulation of the mesenchymal stem cells (MSCs), these cells can be used for autologous skeletal tissue repair, using an *ex vivo* technique in human patients[17] or in the experimental animal models[18,19,20,21,22]. The results are similar to those obtained after experimental gene therapies for cartilage and bone disorders in mammals[23,24,25]. The zebrafish has previously been proposed as a model system in preclinical studies of skeletal tissue diseases[26,27]. We shall review empirical molecular and cellular mechanisms that induce the formation of lepidotrichia vs. other skeletal tissues in vertebrates. All the arguments presented in this paper support the notion that, although lepidotrichia is a special type of skeletal tissue, fin ray regeneration in zebrafish could also be useful for preclinical studies of skeletal tissue disorders.

ALTHOUGH RAYS IN ACTINOPTERYGIAN FISHES DISAPPEARED THROUGH EVOLUTION IN VERTEBRATES, CERTAIN GENERAL MORPHOLOGICAL FEATURES OF LEPIDOTRICHIA ARE SOMEHOW SIMILAR TO SOME HIGHER VERTEBRATE SKELETAL TISSUES

Fin types, fin general morphology (Fig. 1A), and number of fin rays[29] are characteristics used in actinopterygian systematics. Rhipidistian are crossopterygian fishes with enlarged basal bones at the expense of a reduction in distal dermal rays[30]. These fossil devonian fishes are at the base of amphibians and the rest of vertebrates with tetrapod limbs. Among fossil fishes, terrestrial colonization by vertebrates was preceded by the transformation of pectoral and pelvic fins into tetrapod limbs. This process occurred with the loss of dermal fin rays, overgrowth of basal bones, and formation of digits (Fig. 1B)[3]. Dermal fin rays of actinopterygian fishes are then nonhomologous to tetrapod limbs.

Sections of fin rays reveal a characteristic lepidotrichia tissue that resembles a parenthesis surrounding the connective tissue containing blood vessels and nerves (Fig. 1C from *Carassius auratus*), and a covering multistratified epidermis. Lepidotrichia can be either cellular or acellular. Lepidotrichia cellular bone shows many cells immersed in a calcified and laminar ECM. In general, this ECM is synthesized by peripheral scleroblasts that build the matrix and may become trapped in it. A thin layer of an osteoid-like matrix can also be observed near the scleroblast layer[31].

In general, the other skeletal tissues (bones, cartilage, enamel, and dentine) are also constituted by particular cell types and characteristic composition of ECM molecules. As an example, we show the histological appearance of membrane and endochondral bone and fibrous cartilage. Details on other skeletal types can be found in Hall[3]. Intramembranous ossified bones (i.e., bones of the skull) show a

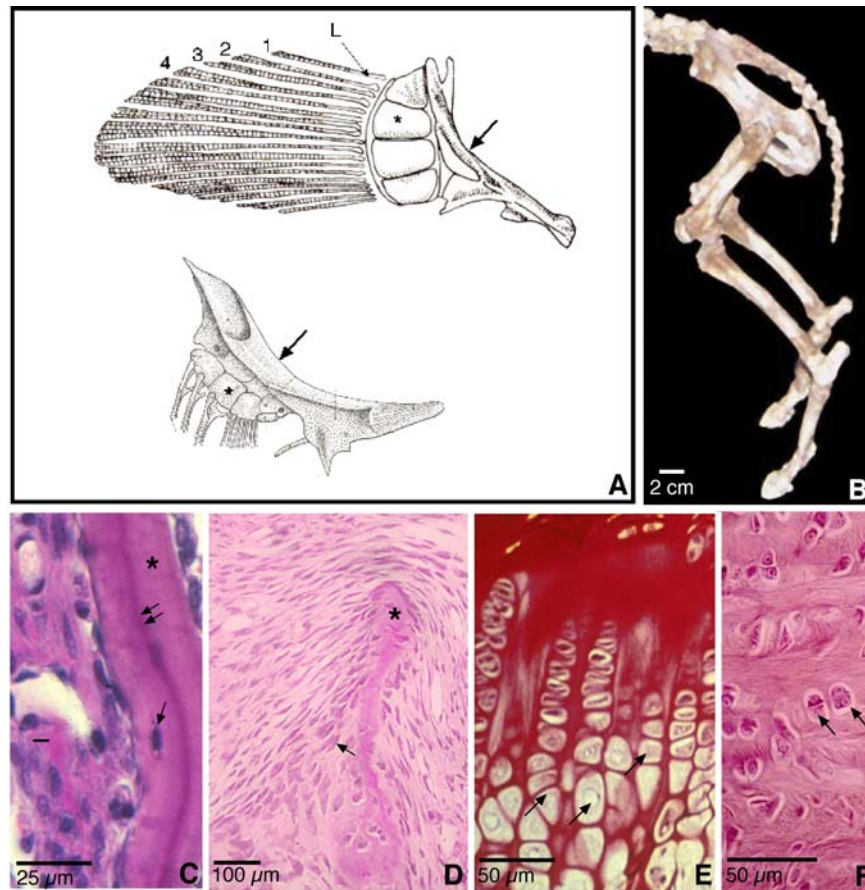


FIGURE 1. (A) Schematic representation of a pectoral fin skeleton of a teleost (*Gobius*). Observe how the dermal rays, mostly formed by lepidotrichia (L) (only numbered from 1 to 4), are organized distal to the cleithrum (arrow) and hypercoracoid bones (asterisk). Below this general scheme, observe a detail of the scapular girdle of *Trigla* (differentiating by endochondral ossification and similar to the one shown in *Gobius*) (adapted from Grassé[28]). In rhipidistian fishes, the dermal rays start disappearing and the basal bones overgrow as a general vertebrate evolutionary trend until the rays are completely absent in the limb as in actual birds or mammals. (B) The posterior part of *Ovis aries* (sheep) skeleton shows how the basal bones overgrow, articulate, and bifurcate forming the digits (bottom), reaching large proportions as compared to actinopterygian fishes. (C) The dermal bone of the rays is also segmented and bifurcated. In cross-section, obtained from a caudal fin of a *C. auratus* specimen, the dermal bone (lepidotrichia) is a parenthesis-like structure (asterisk) — in this picture, only one element of the parenthesis is shown — that surrounds a loose connective tissue with fibroblasts and blood vessels immersed in the tissue. In the case of *C. auratus*, this is a cellular bone as cells can be observed inside the lepidotrichia (arrow). The lepidotrichia is divided into two parts, one internal and one external, separated by a specially glycosilated ECM (double arrows). (D) Detail of a bone growing by intramembranous ossification in humans. Observe a central condensation (asterisk) and various strata of osteocytes (arrow) providing a general laminar ordering. (E) Detail of a bone growing by endochondral ossification in a rat (*Rattus rattus*). Observe the bone matrix (in red) with osteocytes. Long bones grow at the epiphyseal plate by the hypertrophy of a template of cartilage (arrows) and its substitution by migrating osteoblasts. (F) Fibrous cartilage. Observe chondrocytes (arrows) and fibrillar ECM surrounding them. Magnifications are shown by bars.

similar structural pattern: cells (osteocytes) immersed in a calcified and laminar ECM deposited by peripheral osteoblasts in a subepidermal location (Fig. 1D). By contrast, the general morphology of endochondral bones is more complex and involves a stereotyped order of cells at different maturation and differentiation stages at the growing sites (i.e., the epiphyseal plate of the long bones) (Fig. 1E). Chondrocytes proliferate, become prehypertrophic, then hypertrophic, and provide a cartilage template for migrating progenitor cells that differentiate into osteoblasts that finally synthesize a calcified ECM, the

bone matrix, with immersed osteocytes. Between trabecular bone, bone marrow (BM) is formed that contains hematopoietic and mesengenic cell lineages[32]. Fibrous cartilage is composed of an ECM with thick bundles of collagen fibrils that surround chondrocytes. Mineralization and ground substance masking collagen is absent except for regions neighboring chondrocytes (Fig. 1F). Similar processes have been described to occur in developing osteichthyan fishes, such as zebrafish[3].

The cellular types of the other main skeletal tissues, enamel[33] and dentine, are the ameloblasts and odontoblasts, respectively. Enamel and dentine are also highly mineralized tissues[3]. The composition and formation of fish dentine and enamel have been recently described and compared with the corresponding tissues in tetrapods[2,10,34]. Histologically, lepidotrichia is then similar to the main skeletal tissues and is described as a dermal bone[35]

MSCS CAN BE INDUCED TO DIFFERENTIATE INTO ANY SKELETAL TISSUE BOTH *IN VITRO* AND *IN VIVO*

Mesenchymal cells obtained from the BM maintain the capacity of differentiating either in chondroblasts or in osteoblasts in culture[36]. These cells may be reintroduced into vertebrates with bone disorders and repair mechanisms activated *in vivo*. All main skeletal tissues formation can be ectopically induced by this method[37,38].

In general, the development of skeletal tissues occurs by stereotyped developmental patterns. Mesenchymal cell migration, condensation, alignment, secretion of a specific composition of ECM molecules, and cell differentiation may occur. Appositional growth and mineralization are also typical of these tissues. Differentiation of cells competent to inducing signals also occurs in a stereotyped manner. In this study, competent cells are osteoblasts, differentiating into osteocytes (bone); chondroblasts, differentiating into chondrocytes (cartilage); preameloblasts, differentiating into ameloblasts (enamel); preodontoblasts, differentiating into odontoblasts (dentine); and scleroblasts precursor cells (SPCs) that differentiate into scleroblasts (lepidotrichia). Except for SPCs, all these precursor cells may arise from MSCs *ex vivo* induction[20,37,39,40,41]. In general, a microenvironment that controls stem cell activity, the Niche, has been described[42].

Zebrafish cartilage, bone, and even tooth development, which occurs through a continuous eruption and replacement of teeth at the pharyngeal arches, has been described[3,43]. However, the clear existence of MSCs in fishes has not been demonstrated yet[44]. In relation to this topic, Nechiporuk and Keating[45] suggest the absence of stem cells in zebrafish fins during regeneration (see below) and support the notion that all cells are equally competent to dedifferentiate following fin ablation.

FIN REGENERATION AFTER AMPUTATION RESTORES MORPHOLOGY AND FUNCTION; THIS PROCESS IS SIMILAR TO TETRAPOD LIMB REGENERATION

The tetrapod limb is a classical system to study regeneration. Hundreds of experiments have been performed using this system. However, the fin is also capable of regeneration and represents a simpler regenerating system than the tetrapod limb. Only tissues supported by lepidotrichia and actinotrichia can regenerate. This process includes epidermal cell migration, mesenchymal cell dedifferentiation and migration, and blastema formation and outgrowth[46] similar to tetrapod limb regeneration[47]. Both limb and fin regeneration also require tissue interactions[48,49,50,51,52]. However, while in the regenerating fin, histological analysis[53] has shown that a number of blastemal cells that adjoin the basal epidermis differentiate into scleroblasts that synthesize the lepidotrichia[35,53], therefore suggesting the participation of epidermal-blastema interactions for bone regeneration, cartilaginous condensation occurs away from the epidermis during tetrapod limb regeneration[47]. Recent studies further suggest that fetal mammals may also partially regenerate their limbs using mechanisms similar to lower vertebrate limbs[54].

Besides endochondral bone and lepidotrichia, other skeletal tissues may also regenerate. For example, deer antler regeneration has been proposed as a model system for intramembranous bone regeneration[13,55]. A complete comparative tissue and molecular analysis of the regeneration of the different types of skeletal tissues will require further investigations.

BASIS FOR A COMPARATIVE MOLECULAR ANALYSIS OF SKELETAL TISSUES

Theoretically, tissue ontogeny, renewal, and regeneration of skeletal tissues in various vertebrate species might be compared in an independent way. However, the available data in the literature only allow partial comparative analyses, especially for molecular comparative studies (Table 1).

TABLE 1
Signals Inducing Skeletal Tissues and Ray Dermal Bone
Differentiation in Vertebrates

Induced Tissues	BMP2	SHH	RA	IHH
Bone	+ [23] ^{d2} + [24] ^{d2} + [56] ^{c3}	+ [81] ^{d3} + [82] ^{ab2}	+ [13] ^{ac3} + [87] ^{ac2}	[24] ^{f1} [32] ^{f3} [97] ^{f2} + [98] ^{e1}
Cartilage	+ [72] ^{c1} + [73] ^{ac2} + [74] ^{ac2}	+ [83] ^{d1} + [84] ^{d2} + [85] ^{c3}	- [13] ^{ac3} - [57] ^{ef1} - [88] ^{c1} + [89] ^{ac1} + [90] ^{ac2}	[55]^{fg3} - [98] ^{e1} - [99] ^{ec1} + [100] ^{ac2} [101] ^{f13} + [102] ^{ac2}
Dentine	+ [38] ^{ab2} + [76] ^{ac2} [77] ^{f1} [78] ^{f1}	[9]^{d1}	± [91]^{cg2} - [92] ^{cg1} [93] ^{cg1}	[103] ^{f1}
Enamel	[77] ^{f1} [78] ^{f1} [79] ^{f1}	[9]^{d1} + [86]^{e1}	- [92] ^{cg1} [93]^{cg1} [94]^{cg1}	n.d.
Lepidotrichia	+ [12] ^{d5} [80] ^{f4,5}	+ [12] ^{d5} [80] ^{f4,5}	+ [6]^{c5} - [95] ^{c4} - [96] ^{c4}	[8] ^{f4,5}

Note: a: MSC *in vitro*; b: MSC *in vivo/ex vivo*; c: purified molecules administration; d: gene transfer; e: transgenic/mutant mice; f: *in situ* hybridization; g: explants culture; 1: any skeletal tissue ontogeny; 2: any skeletal tissue renewal from MSCs; 3: any skeletal tissue regeneration; 4: fish lepidotrichia ontogeny; 5: fish lepidotrichia regeneration; +/-: promotion/repression of skeletal formation; **bold**: involved in pattern formation or not essential for differentiation; n.d.: not determined. Shh: sonic hedgehog; RA: retinoic acid; Ihh: Indian hedgehog.

Moreover, when interpreting experimental results, authors might discriminate between pattern formation (previous to tissue differentiation), and cell differentiation/ECM synthesis and mineralization (proper tissue differentiation). In some cases, possible pattern-forming processes will not be easily separated from cell differentiation events (i.e., fracture healing[56]; *in vitro* studies[57]). Some of these topics have been considered in recent reviews[58,59,60].

At the molecular level, orthology among inducing signals and possible signaling modules that induce osteogenesis during vertebrate development have already been proposed[61,62]. Recent studies suggest independent evolution (phenogenetic drift) of some ECM components in enamel and dentine among vertebrate species[10].

Our comparative molecular study will be focused then on these two aspects:

- ECM components
- Signals that induce progenitor cells to differentiate into the main skeletal tissues

FIN RAY LEPIDOTRICHIA ECM IS DIFFERENT TO ANY OTHER SKELETAL TISSUE IN FISHES

The comparison of the expression of various collagen genes allows us to show that the lepidotrichia differ from other skeletal tissues. *collagen alpha 1 (type X) (col10a1)* chain gene mRNA, as well as *coll1a1*[63], *coll1a2*, and *col2a1* mRNAs, have been isolated from a subtraction library or by DDRT-PCR from regenerating fins of zebrafish[7]. It has also been shown that *col10a1* is expressed in cartilage, intramembranous and endochondral bone of developing zebrafish larvae, and fin regenerates[8]. *col2a1*, a marker for cartilage in mammalian species, is expressed in the hypochord, mesenchyme of the neurocranium, pharyngeal arches, and the cartilage of developing fins in zebrafish[64,65,66], but not in enameloid and dentine[34]. Zebrafish mutants for *coll1a1* show bone defects, suggesting that this gene is required during bone and fin formation, but they do not show any cartilage phenotype[63]. In addition, *coll1a1* is expressed in cells surrounding the cartilage, but not in the cartilages themselves[63]. *coll1a1* is also expressed in enameloid and dentine in fish teeth[10,34].

In summary, developing and regenerating lepidotrichia express or require *col10a1*[7,8], *coll1a2*[7], *coll1a1*[7,63], and *col2a1*[7,64]. This combination of genes is not found in any other skeletal tissues of fish. Cartilage formation does not require *coll1a1*[63], and *col2a1* is not expressed in bone[65,66] or teeth[34]. All these results are consistent with the hypothesis that fin lepidotrichia could be a special type of skeletal tissue in fish[3].

BMP2 INDUCES DIFFERENTIATION OF CARTILAGE- AND BONE-FORMING CELLS IN MAMMALS AND OF LEPIDOTRICHIA-FORMING CELLS IN FISH FINS

In 1889, Senn[67] observed that decalcified bone induces healing of bone defects. Urist[68] showed that decalcified bone matrix (DBM) induces ectopic bone formation. Since then, a number of molecules have been found to mediate this effect[69]. The first protein activity was discovered by Sampath and Reddi in 1981[70]. In a review, Reddi describes the general effect of BMPs on osteogenesis induction both *in vivo* and *in vitro*[69]. The first extensive study of BMPs in the search for therapies against human bone disorders was published by Burkus et al.[71]. In this work, more than 600 patients were studied to prove statistically the positive effect of BMP2 in long bone fractures repair, which includes formation of both cartilage and bone. BMP2 shows a positive effect on chondrogenesis and dentine differentiation induction following many different experimental procedures (Table 1)[38,72,73,74,75,76,77].

Finally, Quint et al.[12] showed the involvement of BMP2 in lepidotrichia differentiation. Indeed, the ectopic expression of *bmp2b* in the fin regenerate induced ectopic bone formation, while overexpression of Chordin, a BMP antagonist, impaired bone formation[104] (Table 1).

ADDITIONAL EXPERIMENTS WITH OTHER INDUCTIVE SIGNALS ALSO SUPPORT THE NOTION THAT LEPIDOTRICHIA IS A SPECIAL TYPE OF SKELETAL TISSUE

A variety of techniques has been used to study the effects of other inducing signals as reported in Table 1: MSC *in vitro* (a)[105], MSC *in vivo/ex vivo* (b)[105,106], purified molecular administration (c)[15,70,88], gene transfer (d)[12,23,24,25,83], and transgenic/mutant mice (e)[9,56]. Their inductive activities have been studied during skeletal tissue ontogeny (1, 4 in Table 1), renewal (*in vitro* or *ex vivo* studies) (2 in Table 1), or regeneration (3, 5 in Table 1) in several vertebrate model systems or humans.

Our proposal of fin regeneration as a model system for skeletal disorders in mammals is based on the data shown in the table and further explanations below.

As an example, the signal *Sonic hedgehog* is able to ectopically induce any skeletal tissue, bone, enamel/enameloid, dentine, cartilage, or lepidotrichia (see Table 1). However, enamel and dentine may differentiate in the absence of *Shh* function in transgenic mice[9]. Absence of *shh* signaling leads to outgrowth arrest during fin regeneration[12] (Table 1), a similar phenotype to the one observed after collagen synthesis inhibition[107]. This is compatible with *shh* affecting lepidotrichia ECM formation during regeneration. This would further suggest, as we have discussed according to its collagen content, that lepidotrichia is not dentine as previously proposed[4] and not enamel either.

During both endochondral and intramembranous ossification, several differentiation events occur. These events can be disclosed using retinoic acid (RA). Retinoic acid is a potent repressor of cartilage formation[13,56,88], whereas it induces both terminal chondrocyte[89,90] and osteoblast differentiation[13,87]. It has also been shown that retinoic acid has stage-specific positive and negative effects on tooth morphogenesis[91]. There is not yet a clear conclusion from lepidotrichia studies, but retinoic acid participates in both ray pattern formation and differentiation (Table 1)[6,95,96].

It has also been shown that *Indian hedgehog* (*Ihh*) couples chondrogenesis and osteogenesis by repressing hypertrophic chondrocyte formation[98,99] and promoting osteoblast lineage commitment[98]. Moreover, it has a positive effect on late phases of chondrocyte differentiation[100,102]. *Ihh* is also expressed during tooth formation[103]. Studies on zebrafish ontogeny and fin regeneration[8] suggest that *ihh* is expressed in developing and regenerating fins during scleroblast differentiation. However, conclusions must wait for functional analysis (Table 1).

Fibroblast growth factors (FGFs) are able to induce all types of skeletal tissues[108,109,110,111,112,113,114,115,116,117]. Several arguments further suggest that FGF could be necessary for lepidotrichia formation[118]. The inhibition of FGF signaling pathway stops fin outgrowth[119] and modulation of the FGF signaling regulates the rate of fin outgrowth[120,121]. *Wnt* genes are also involved in the regulation of chondro-osteogenesis differentiation in mammals[122] and *wnt3a*, *wnt5*, and β -*catenin* genes are expressed during fin regeneration[48]. TGF β s are other signals inducing chondro-osteogenesis[123] that could be studied in regenerating fins. Although further studies must be carried out, the arguments we have discussed suggest that lepidotrichia behave similar to the main skeletal tissues under experimental studies using inducing factors.

FUTURE PERSPECTIVES IN FIN REGENERATION STUDIES

From an evolutionary point of view, dermal fin rays are not homologous to the tetrapod limb. Furthermore, morphological and molecular evidence suggests that lepidotrichia is a special type of skeletal tissue different to any main skeletal tissue. Despite this recognized peculiarity of the lepidotrichia, the above-mentioned results suggest a close similarity between the effects of inducing signals on the main skeletal tissues in vertebrates and on ray dermal bone formation. Further experimental data using known chondro-osteogenic inducing signals in mammals could provide further evidence to support this idea. This empirical support occurs above any consideration of homology between tissues. For instance, limb development in arthropods and vertebrates are nonhomologous processes, according to comparative anatomy, but use similar controlling genetic mechanisms[124].

From a medical view, several clinical groups have already obtained sufficient data to initiate bone disorder therapies[17,105,125,126,127,128,129,130,131,132,133,134,135,136,137,138,139,140,141,142,143]. In order to improve the effect of the inducing signals that are used, a variety of delivery systems are being tested[144,145,146,147]. These materials facilitate the regenerating activity of the cells and increase the efficacy of the treatment. Modifications in the amino acidic sequence of released signals may also be necessary to facilitate stable interactions of the factors with MSCs in culture and *ex vivo* studies[19,20] (Fig. 2). According to all empirical data reviewed above, we propose the use of fin ray regeneration/development studies as a model system for preclinical studies on skeletal tissue disorders.

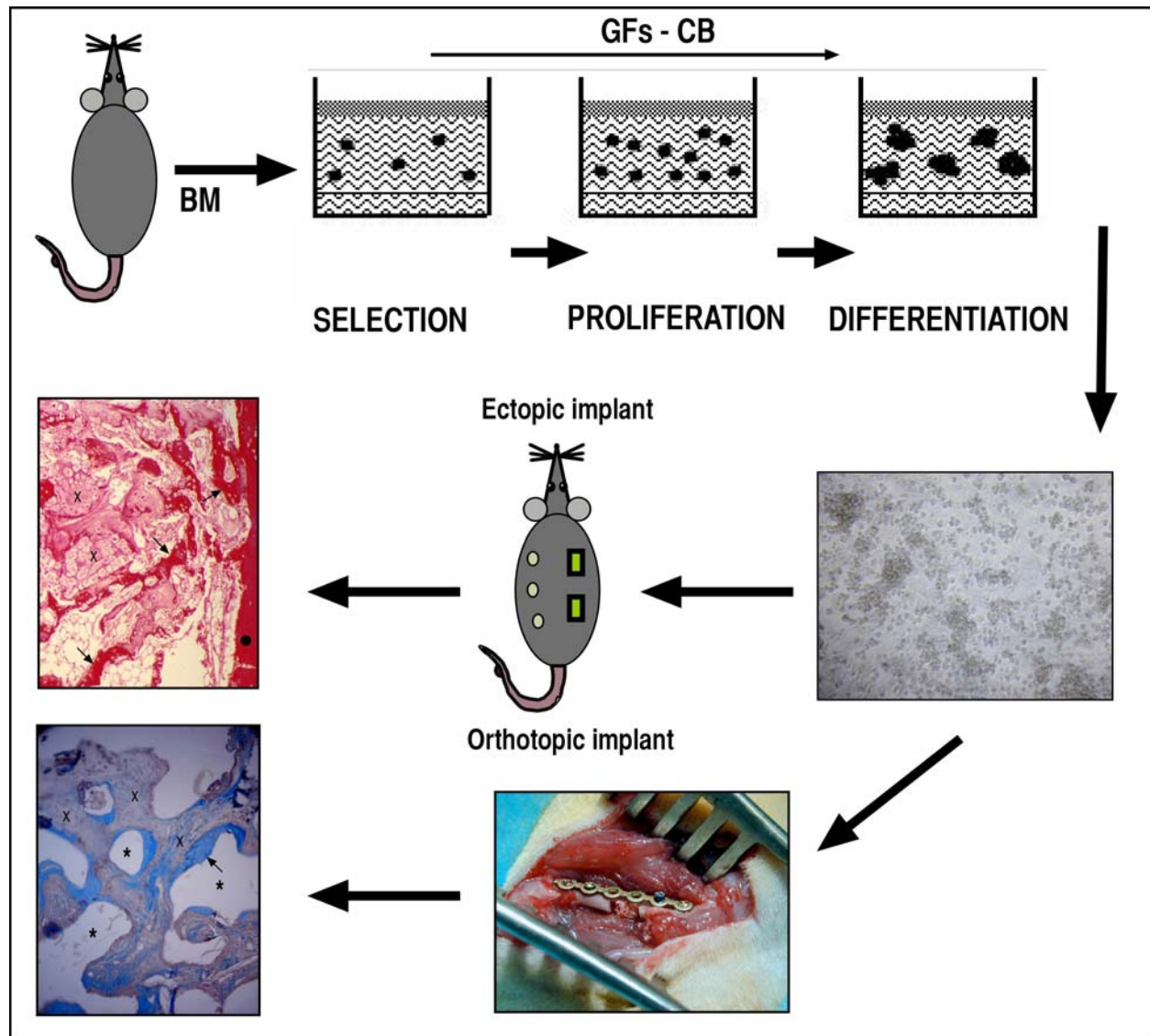


FIGURE 2. Culture of bone marrow cells for *in vivo* implantation. Bone marrow cells from rats are cultured in three-dimensional collagen during a short period of time in the presence of 0.5% FBS. After this starvation period, a cell population can be selected. These cells cultured in the presence of 10% FBS proliferate significantly increasing the cell population. Dexamethasone, β -glycerolphosphate, and ascorbic acid are added to induce osteogenic differentiation. All this process can be modulated by TGF β 1 and different BMPs. Cells extracted from the final culture may be ectopically grafted in a DBM chamber. After several weeks, implanted cells produce cartilage and bone inside the chamber. Alternatively, cells from *in vitro* culture can be orthotopically grafted using hydroxyapatite (HA) as biomaterial. After several weeks, a new tissue occupies the center of the HA. In this new tissue, both cartilage and bone can be easily identified. Arrows (bone tissue), X (cartilage tissue), dots (DBM wall), asterisk (trabeculae of HA).

CONCLUSIONS

For a complete understanding of actinopterygian lepidotrichia nature, it is necessary to complete several studies. However, the experimental data accumulated until now support the notion that ray dermal bone, or lepidotrichia, is actually a special type of skeletal tissue when analyzed at the molecular level. Despite this dissimilarity to other skeletal tissues, these empirical evidence also suggest that studies on lepidotrichia (i.e., regenerating fins) could be of interest in preclinical studies of skeletal tissues disorder therapies. At least three inducing signals or modulators, SHH, BMP-2, and retinoic acid, have been proved to have an outstanding effect on lepidotrichia, and the rest of skeletal tissues in vertebrates. Further studies with other inducing signals could provide light to support our hypothesis of preclinical interest.

ACKNOWLEDGMENTS

The authors are indebted to *TheScientificWorldJOURNAL* Editor, Marie-Andrée Akimenko, for handling our manuscript. We also acknowledge María Dolores López Ávalos for critical reading of our manuscript. This work has been supported by grants from the Spanish Ministry of Education and Science, BOS2002-00347, from the Spanish Ministry of Health, (PI02/1758, PI06/1855), from Junta de Andalucía, PAI (CVI/217), and from Fundación Progreso y Salud (TC 201.1.2/04), under the management of Fundación IMABIS, Spain. One patent is associated to this study PCT/ES2005/000287[148].

REFERENCES

- Smith, M.M. and Hall, B.K. (1990) Development and evolutionary origins of vertebrate skeletogenic and odontogenic tissues. *Biol. Rev. Camb. Philos. Soc.* **65**(3), 277–373.
- Sire, J.Y. and Huysseune, A. (2003) Formation of dermal skeletal and dental tissues in fish: a comparative and evolutionary approach. *Biol. Rev. Camb. Philos. Soc.* **78**(2), 219–249.
- Hall, B.K. (2005) *Bones and Cartilage. Developmental and Evolutionary Skeletal Biology*. Elsevier Academic Press. San Diego.
- Géraudie, J. and Meunier, F.-J. (1982) Comparative fine structure of the osteichthyan dermatotrichia. *Anat. Rec.* **202**, 325–328.
- Montes, G.S., Becerra, J., Toledo, O.M.S., Gordilho, M.A., and Junqueira, L.C.U. (1982) Fine structure and histochemistry of the tail fin ray in teleosts. *Histochemistry* **75**, 363–376.
- Santamaría, J.A., Marí-Beffa, M., and Becerra, J. (1992) Regeneración de aletas de teleósteos: Interacción células-matriz extracelular. *Progresos en Biología Celular*. Becerra Ratia, J., Pérez-Figares, J.M., and Fernández-Llebrez, P., Eds. Universidad de Málaga.
- Padhi, B.K., Joly, L., Tellis, P., Smith, A., Nanjappa, P., Chevrette, M., Ekker, M., and Akimenko, M.-A. (2004) Screen for genes differentially expressed during regeneration of the zebrafish caudal fin. *Dev. Dyn.* **231**, 527–541.
- Avaron, F., Hoffman, L., Guay, D., and Akimenko, M.-A. (2006) Characterization of two new zebrafish members of the Hedgehog family: atypical expression of a zebrafish *indian hedgehog* gene in skeletal elements of both endochondral and dermal origins. *Dev. Dyn.* **235**, 478–489.
- Dassule, H.R., Lewis, P., Bei, M., Maas, R., and McMahon, A.P. (2000) Sonic hedgehog regulates growth and morphogenesis of the tooth. *Development* **127**, 4775–4785.
- Kawasaki, K., Suzuki, T., and Weiss, K.M. (2005) Phenogenetic drift in evolution: the changing genetic basis of vertebrate teeth. *Proc. Natl. Acad. Sci. U. S. A.* **102**(50), 18063–18068.
- Muller, T.L., Ngo-Muller, V., Reginelli, A., Taylor, G., Anderson, R., and Muneoka, K. (1999) Regeneration in higher vertebrates: limb buds and digit tips. *Semin. Cell Dev. Biol.* **10**(4), 405–413.
- Quint, E., Smith, A., Avaron, F., Laforest, L., Miles, J., Gaffield, W., and Akimenko, M.-A. (2002) Bone patterning is altered in the regenerating zebrafish caudal fin after ectopic expression of *sonic hedgehog* and *bmp2b* or exposure to cyclopamine. *Proc. Natl. Acad. Sci. U. S. A.* **99**, 8713–8718.
- Allen, S.P., Maden, M., and Price, J.S. (2002) A role for retinoic acid in regulating the regeneration of deer antlers. *Dev. Biol.* **251**, 409–423. DOI 10.1006/dbio.2002.0816.
- Ashique, A.M., Fu, K., and Richman, J.M. (2002) Signalling via type IA and type IB Bone Morphogenetic Protein Receptors (BMPR) regulates intramembranous bone formation, chondrogenesis and feather formation in the chicken embryo. *Int. J. Dev. Biol.* **46**, 243–253.

15. Maden, M. (2002) Retinoic acid and limb regeneration -a personal view. *Int. J. Dev. Biol.* **46**, 883–886.
16. Bonyadi, M., Waldman, S.D., Liu, D., Aubin, J.E., Grynepas, M.D., and Stanford, W.L. (2003) Mesenchymal progenitor self-renewal deficiency leads to age-dependent osteoporosis in Sca-1/Ly-6A null mice. *Proc. Natl. Acad. Sci. U. S. A.* **100**, 5840–5845.
17. Becerra, J., Guerado, E., Claros, S., Alonso, M., Bertrand, M.L., González, C., and Andrades, J.A. (2006) Autologous human-derived bone marrow cells exposed to a novel TGF- β 1 fusion protein for the treatment of critically sized tibial defect. *Regenerative Med.* **1(2)**, 267–278.
18. Andrades, J.A., Han, B., Nimni, M.E., Ertl, D.C., Simpkins, R.J., Arrabal, M.P., and Becerra, J. (2003) A modified rhTGF- β 1 and rhBMP-2 are effective in initiating a chondro-osseous differentiation pathway in bone marrow cells cultured in vitro. *Connect. Tissue Res.* **44**, 188–197.
19. Andrades, J.A., Han, B., Becerra, J., Sorgente, N., Hall, F.L., and Nimni, M.E. (1999) A recombinant human TGF- β 1 fusion protein with collagen-binding domain promotes migration, growth and differentiation of bone marrow mesenchymal cells. *Exp. Cell Res.* **250**, 485–498.
20. Andrades, J.A. and Becerra, J. (2002) Bone morphogenetic proteins, collagen matrices and mesenchymal stem cells. In *Advances in Skeletal Reconstruction using Bone Morphogenetic Proteins*. World Scientific Publishing. pp. 54–62.
21. Tuan, R.S. (1998) Cellular and molecular regulation of embryonic skeletal development and morphogenesis. *Cells Mater.* **8**, 3–18.
22. Wilkie, A.O.M. (1997) Craniosynostosis: genes and mechanisms. *Hum. Mol. Genet.* **6**, 1647–1656.
23. Partridge, K., Yang, X., Clarke, N.M.P., Okubo, Y., Bessho, K., Sebald, W., Howdle, S.M., Shakesheff, K.M., and Oreffo, R.O.C. (2002) Adenoviral BMP-2 gene transfer in mesenchymal stem cells: *in vitro* and *in vivo* bone formation on biodegradable polymer scaffolds. *Biochem. Biophys. Res. Commun.* **292(1)**, 144–152.
24. Meinel, L., Hofmann, S., Betz, O., Fajardo, R., Merkle, H.P., Vunjak-Novakovic, G., Langer, R., and Kaplan, D. (2004) Osteogenesis of human mesenchymal stem cells cultured on silk biomaterials: comparison of adenoviral gene and protein delivery of Bmp2. *Eur. Cells Mater.* **7(Suppl 2)**, 5.
25. Robbins, P.D., Jorgensen, C., and Evans, C.H. (2001) Gene therapy moves forward - The Second International Meeting on Gene and Cell Therapies of Arthritis and Related Disorders, 17–18 May 2001, Montpellier, France. *Arthritis Res.* **3**, 289–292.
26. Shin, J.T. and Fishman, M.C. (2002) From zebrafish to human: modular medical models. *Annu. Rev. Genomics Hum. Genet.* **3**, 311–340. DOI 10.1146/annurev.genom.3.031402.131506.
27. NIH Guides for Arthritis and Muscle Diseases: <http://www.niams.nih.gov/rtbc/index.htm>.
28. Grassé, P.P. (dir.) (1958) *Traité de Zoologie. Anatomie, Systématique, Biologie. Agnatha et Poissons. Anatomie, Éthologie, Systématique*. Tome XIII. Masson et C^{ie} Éditeurs. Paris. p. 753.
29. Nelson, J.S. (1994) *Fishes of the World*. 3rd ed. John Wiley & Sons, New York.
30. Kardong, K.W. (1998) *Vertebrates. Comparative, Anatomy, Function, Evolution*. McGraw-Hill, New York.
31. Becerra, J., Montes, G.S., Bexiga, S.R.R., and Junqueira, L.C.U. (1983) Structure of the tail in teleosts. *Cell Tissue Res.* **230**, 127–137.
32. Caplan, A.I. (1991) Mesenchymal stem cells. *J. Orthop. Res.* **9(5)**, 641–650.
33. Frank, R.M. (1979) Tooth enamel: current state of the art. *J. Dent. Res.* **58B**, 684–694.
34. Kawasaki, K. and Weiss, K.M. (2006) Evolutionary genetics of vertebrate tissue mineralization: the origin and evolution of the secretory calcium-binding phosphoprotein family. *J. Exp. Zool. (Mol. Dev. Evol.)* **306B**, 1–22. DOI 10.1002/jez.b.
35. Akimenko, M.-A., Marí-Beffa, M., Becerra, J., and Géraudie, J. (2003) Old questions, new tools, and some answers to the mystery of fin regeneration. *Dev. Dyn.* **226**, 190–201.
36. Friedenstein, A.Y. and Lalykina, K.S. (1973) *Bone Induction and Osteogenic Precursor Cells*. Medical Publishing House, Moscow. [Russian] Translation explained in Hall, 2005.
37. Stoeger, T., Proetzel, G., Welzel, H., Papadimitriou, A., Dony, C., Balling, R., and Hofmann, C. (2002) *In situ* gene expression analysis during BMP2-induced ectopic bone formation in mice shows simultaneous endochondral and intramembranous ossification. *Growth Factors* **20(4)**, 197–210.
38. Iohara, K., Nakashima, M., Ito, M., Ishikawa, M., Nakasima, A., and Akamine, A. (2004) Dentin regeneration by dental pulp stem cell therapy with recombinant human bone morphogenetic protein 2. *J. Dent. Res.* **83(8)**, 590–595.
39. Lietman, S.A., Ding, C., Cooke, D.W., and Levine, M.A. (2005) Reduction in Gsalpha induces osteogenic differentiation in human mesenchymal stem cells. *Clin. Orthop. Relat. Res.* **434**, 231–238.
40. Gronthos, S., Mankani, M., Brahimi, J., Gehron Robey, P., and Shi, S. (2000) Postnatal human dental pulp stem cells (DPSCs) *in vitro* and *in vivo*. *Proc. Natl. Acad. Sci. U. S. A.* **97(25)**, 13625–13630.
41. Thesleff, I. and Tummers, M. (2003) Stem cells and tissue engineering: prospects for regenerating tissues in dental practice. *Med. Princ. Pract.* **12**, 43–50. DOI 10.1159/000069840.
42. Fuchs, E., Tumber, T., and Guasch, G. (2004) Socializing with the neighbors: stem cells and their niche. *Cell* **116**, 769–778.
43. Huysseune, A. and Thesleff, I. (2004) Continuous tooth replacement: the possible involvement of epithelial stem cells. *BioEssays* **26**, 665–671.
44. Hong, J.-H., Hwang, E.S., McManus, M.T., Amsterdam, A., Tian, Y., Kalmukova, R., Mueller, E., Benjamin, T., Spiegelman, B.M., Sharp, P.A., Hopkins, N., and Yaffe, M.B. (2005) TAZ, a transcriptional modulator of

- mesenchymal stem cell differentiation. *Science* **309**(5737), 1074–1078.
45. Nechiporuk, A. and Keating, M.T. (2002) A proliferation gradient between proximal and *msxb*-expressing distal blastema directs zebrafish fin regeneration. *Development* **129**, 2607–2617.
 46. Johnson, S.L. and Bennett, P. (1999) Growth control in the ontogenetic and regenerating zebrafish. *Methods Cell Biol.* **59**, 301–311.
 47. Tsonis, P.A. (1996) *Limbs Regeneration*. Barlow, P.W., Bard, J.B.L., Green, P.B., and Kirk, D.L., Eds. Development and Cell Biology Series. Cambridge University Press. Cambridge.
 48. Poss, K.D., Shen, J., Nechiporuk, A., McMahon, G., Thisse, B., Thisse, C., and Keating, M.T. (2000) Roles for *Fgf* signaling during zebrafish fin regeneration. *Dev. Biol.* **222**, 347–358.
 49. Dahn, R.D. and Fallon, J.F. (2000) Interdigital regulation of digit identity and homeotic transformation by modulated BMP signaling. *Science* **289**, 438–441.
 50. Marí-Beffa, M., Palmqvist, P., Marín-Girón, F., Montes, G.S., and Becerra, J. (1999) Morphometric study of the regeneration of individual rays in teleost tail. *J. Anat.* **195**, 393–405.
 51. Murciano, C., Ruiz, J., Maseda, D., Fernández, T.D., Durán, I., Marín-Girón, F., Becerra, J., and Marí-Beffa, M. (2001) Ray and inter-ray blastemas interact to control bifurcations of *Danio rerio* fin rays. *Int. J. Dev. Biol.* **45**, S129–S130.
 52. Murciano, C., Fernández, T.D., Durán, I., Maseda, D., Ruiz, J., Becerra, J., Akimenko, M.-A., and Marí-Beffa, M. (2002) Ray-interray interactions during fin regeneration of *Danio rerio*. *Dev. Biol.* **252**, 214–224.
 53. Becerra, J., Junqueira, L.C., Bechara, I.J., and Montes, G.S. (1996) Regeneration of rays in teleosts: a histochemical, radioautographic, and ultrastructural study. *Arch. Histol. Cytol.* **59**, 15–35.
 54. Han, M., Yang, X., Farrington, J.E., and Muneoka, K. (2003) Digit regeneration is regulated by *Msx1* and BMP4 in fetal mice. *Development* **130**, 5123–5132. DOI 10.1242/dev.00710.
 55. Price, J.S., Allen, S., Fauchaux, C., Althnaian, T., and Mount, J.G. (2005) Deer antlers: a zoological curiosity or the key to understanding organ regeneration in mammals? *J. Anat.* **207**, 603–618.
 56. Schrier, J.A., Fink, B.F., Rodgers, J.B., Vasconez, H.C., and DeLuca, P.P. (2001) Effect of a freeze-dried CMC/PLGA microsphere matrix of rhBMP-2 on bone healing. *AAPS PharmSciTech.* **2**(3), article 18.
 57. Cash, D.E., Bock, C.B., Schughart, K., Linney, E., and Underhill, T.M. (1997) Retinoic acid receptor α function in vertebrate limb skeletogenesis: a modulator of chondrogenesis. *J. Cell Biol.* **136**(2), 445–457.
 58. Phinney, D.G. (2002) Building a consensus regarding the nature and origin of mesenchymal stem cells. *J. Cell Biochem. Suppl.* **38**, 7–12.
 59. Bryant, S.V., Endo, T., and Gardiner, D.M. (2002) Vertebrate limb regeneration and the origin of limb stem cells. *Int. J. Dev. Biol.* **46**, 887–896.
 60. Tsonis, P.A. (2004) Stem cells from differentiated cells. *Mol. Interv.* **4**(2), 81–83.
 61. Sampath, T.K. and Reddi, A.H. (1983) Homology of bone-inductive proteins from human, monkey, bovine, and rat extracellular matrix. *Proc. Natl. Acad. Sci. U. S. A.* **80**, 6591–6595.
 62. Hamamori, Y., Wu, H.-Y., Sartorelli, V., and Kedes, L. (1997) The basic domain of myogenic basic helix-loop-helix (bHLH) proteins is the novel target for direct inhibition by another bHLH protein twist. *Mol. Cell Biol.* **17**, 6563–6573.
 63. Fisher, S., Jagadeeswaran, P., and Halpern, M.E. (2003) Radiographic analysis of zebrafish skeletal defects. *Dev. Biol.* **264**, 64–76.
 64. Sachdev, S.W., Dietz, U.H., Oshima, Y., Lang, M.R., Knapik, E.W., Hiraki, Y., and Shukunami, C. (2001) Sequence analysis of zebrafish *chondromodulin-1* and expression profile in the notochord and chondrogenic regions during cartilage morphogenesis. *Mech. Dev.* **105**, 157–162.
 65. Yan, Y.L., Hatta, K., Riggleman, B., and Postlethwait, J.H. (1995) Expression of a type II collagen gene in the zebrafish embryonic axis. *Dev. Dyn.* **203**(3), 363–376.
 66. Yan, Y.-L., Miller, C.T., Nissen, R., Singer, A., Liu, D., Kirn, A., Draper, B., Willoughby, J., Morcos, P.A., Amsterdam, A., Chung B.-C., Westerfield, M., Haffter, P., Hopkins, N., Kimmel, C., and Postlethwait, J.H. (2002) A zebrafish *sox9* gene required for cartilage morphogenesis. *Development* **129**, 5065–5079.
 67. Senn, N. (1889) On the healing of aseptic bone cavities by implantation of antiseptic decalcified bone. *Am. J. Med. Sci.* **98**, 219–243.
 68. Urist, M.R. (1965) Bone: formation by autoinduction. *Science* **150**, 893–899.
 69. Reddi, A.H. (1997) BMPs: actions in flesh and bone. *Nat. Med.* **3**(8), 837–839.
 70. Sampath, T.K. and Reddi, A.H. (1981) Dissociative extraction and reconstitution of extracellular matrix components involved in local bone differentiation. *Proc. Natl. Acad. Sci. U. S. A.* **78**, 7599–7603.
 71. Burkus, J.K., Heim, S.E., Gornet, M.F., and Zdeblick, T.A. (2003) Is INFUSE bone graft superior to autograft bone? An integrated analysis of clinical trials using the LT-CAGE lumbar tapered fusion device. *J. Spinal Disord. Tech.* **16**(2), 113–122.
 72. Turgeman, G., Zilberman, Y., Zhou, S., Kelly, P., Moutsatsos, I.K., Kharode, Y.P., Borella, L.E., Bex, F.J., Komm, B.S., Bodine, P.V., and Gazit, D. (2002) Systemically administered rhBMP-2 promotes MSC activity and reverses bone and cartilage loss in osteopenic mice. *J. Cell Biochem.* **86**(3), 461–474.
 73. Li, J., Yoon, S.T., and Hutton, W.C. (2004) Effect of bone morphogenetic protein-2 (BMP-2) on matrix production, other BMPs, and BMP receptors in rat intervertebral disc cells. *J. Spinal Disord. Tech.* **17**(5), 423–428.

74. Sekiya, I., Larson, B.L., Vuoristo, J.T., Reger, R.L., and Prockop, D.J. (2005) Comparison of effect of BMP-2, -4, and -6 on in vitro cartilage formation of human adult stem cells from bone marrow stroma. *Cell Tissue Res.* **320**, 269–276. DOI 10.1007/s00441-004-1075-3.
75. Goltzman, D. (2002) Discoveries, drugs and skeletal disorders. *Nat. Rev.* **1**, 784–796.
76. Begue-Kirn, C., Smith, A.J., Ruch, J.V., Wozney, J.M., Purchio, A., Hartmann, D., and Lesot, H. (1992) Effects of dentin proteins, transforming growth factor beta 1 (TGF beta 1) and bone morphogenetic protein 2 (BMP2) on the differentiation of odontoblast in vitro. *Int. J. Dev. Biol.* **36(4)**, 491–503.
77. Åberg, T., Wozney, J., and Thesleff, I. (1997) Expression patterns of bone morphogenetic proteins (Bmps) in the developing mouse tooth suggest roles in morphogenesis and cell differentiation. *Dev. Dyn.* **210(4)**, 383–396.
78. Yamashiro, T., Tummers, M., and Thesleff, I. (2003) Expression of bone morphogenetic proteins and Msx genes during root formation. *J. Dent. Res.* **82(3)**, 172–176.
79. Nadiri, A., Kuchler-Bopp, S., Haikel, Y., and Lesot, H. (2004) Immunolocalization of BMP-2/-4, FGF-4, and WNT10b in the developing mouse first lower molar. *J. Histochem. Cytochem.* **52(1)**, 103–112.
80. Laforest, L., Brown, C.W., Poleo, G., Géraudie, J., Tada, M., Ekker, M., and Akimenko, M.-A. (1998). Involvement of the *Sonic hedgehog*, *patched 1* and *bmp2* genes in patterning of the zebrafish dermal fin rays. *Development* **125**, 4175–4184.
81. Roy, S., Gardiner, D.M., and Bryant, S.V. (2000) Vaccinia as a tool for functional analysis in regenerating limbs: ectopic expression of *Shh*. *Dev. Biol.* **218**, 199–205. DOI 10.1006/dbio.1999.9556.
82. Kinto, N., Iwamoto, M., Enomoto-Iwamoto, M., Noji, S., Ohuchi, H., Yoshioka, H., Kataoka, H., Wada, Y., Yuhao, G., Takahashi, H.E., Yoshiki, S., and Yamaguchi, A. (1997) Fibroblasts expressing Sonic hedgehog induce osteoblast differentiation and ectopic bone formation. *FEBS Lett.* **404**, 319–323.
83. Abzhanov, A. and Tabin, C.J. (2004) *Shh* and *Fgf8* act synergistically to drive cartilage outgrowth during cranial development. *Dev. Biol.* **273**, 134–148.
84. Stott, N.S. and Chuong, C.M. (1997) Dual action of sonic hedgehog on chondrocyte hypertrophy: retrovirus mediated ectopic sonic hedgehog expression in limb bud micromass culture induces novel cartilage nodules that are positive for alkaline phosphatase and type X collagen. *J. Cell Sci.* **110**, 2691–2701.
85. Schnapp, E., Kragl, M., Rubin, L., and Tanaka, E.M. (2005) Hedgehog signaling controls dorsoventral patterning, blastema cell proliferation and cartilage induction during axolotl tail regeneration. *Development* **132**, 3243–3253. DOI 10.1242/dev.01906.
86. Gritli-Linde, A., Bei, M., Maas, R., Zhang, X.M., Linde, A., and McMahon, A.P. (2002) Shh signaling within the dental epithelium is necessary for cell proliferation, growth and polarization. *Development* **129**, 5323–5337.
87. Song, H.M., Nacamuli, R.P., Xia, W., Bari, A.S., Shi, Y.-Y., Fang, T.D., and Longaker, M.T. (2005) High-dose retinoic acid modulates rat calvarial osteoblast biology. *J. Cell Physiol.* **202**, 255–262.
88. De Luca, F., Uyeda, J.A., Mericq, V., Mancilla, E.E., Yanovski, J.A., Barnes, K.M., Zile, M.H., and Baron, J. (2000) Retinoic acid is a potent regulator of growth plate chondrogenesis. *Endocrinology* **141**, 346–353.
89. Koyama, E., Golden, E.B., Kirsch, T., Adams, S.L., Chandraratna, R.A.S., Michaille, J.-J., and Pacifici, M. (1999) Retinoid signaling is required for chondrocyte maturation and endochondral bone formation during limb skeletogenesis. *Dev. Biol.* **208**, 375–391. DOI 10.1006/dbio.1999.9207.
90. Kirimoto, A., Takagi, Y., Ohya, K., and Shimokawa, H. (2005) Effects of retinoic acid on the differentiation of chondrogenic progenitor cells, ATDC5. *J. Med. Dent. Sci.* **52(3)**, 153–162.
91. Mark, M.P., Bloch-Zupan, A., and Ruch, J.V. (1992) Effects of retinoids on tooth morphogenesis and cytodifferentiations, in vitro. *Int. J. Dev. Biol.* **36(4)**, 517–526.
92. Gao, Y., Fan, M., and Bian, Z. (1998) The effect of retinoic acid on crown morphogenesis of mouse tooth germs in vitro. *Zhonghua Kou Qiang Yi Xue Za Zhi* **33(6)**, 358–359. [Chinese]
93. Kronmiller, J.E., Upholt, W.B., and Kollar, E.J. (1992) Alteration of murine odontogenic patterning and prolongation of expression of epidermal growth factor mRNA by retinol in vitro. *Archs. Oral. Biol.* **37**, 129–138.
94. Kronmiller, J.E., Beeman, C.S., Nguyen, T., and Berndt, W. (1995) Blockade of the initiation of murine odontogenesis in vitro by citral, an inhibitor of endogenous retinoic acid synthesis. *Archs. Oral. Biol.* **40**, 645–652.
95. Miwa, S. and Yamano, K. (1999) Retinoic acid stimulates development of adult-type chromatophores in the flounder. *J. Exp. Zool.* **284**, 317–324.
96. Suzuki, T., Haga, Y., Takeuchi, T., Uji, S., Hashimoto, H., and Kurokawa, T. (2003) Differentiation of chondrocytes and scleroblasts during dorsal fin skeletogenesis in flounder larvae. *Dev. Growth Differ.* **45(5–6)**, 435–448.
97. Murakami, S., Nifuji, A., and Noda, M. (1997) Expression of Indian hedgehog in osteoblasts and its posttranscriptional regulation by transforming growth factor-β1. *Endocrinology* **138(5)**, 1972–1978.
98. Chung, U.-i., Schipani, E., McMahon, A.P., and Kronenberg, H.M. (2001) *Indian hedgehog* couples chondrogenesis to osteogenesis in endochondral bone development. *J. Clin. Invest.* **107(3)**, 295–304.
99. Vortkamp, A., Lee, K., Lanske, B., Segre, G.V., Kronenberg, H.M. and Tabin, C.J. (1996) Regulation of rate of cartilage differentiation by Indian hedgehog and PTH-related protein. *Science* **273**, 613–622.
100. Deckelbaum, R.A., Chan, G., Miao, D., Goltzman, D., and Karaplis, A.C. (2002) *Ihh* enhances differentiation of CFK-2 chondrocytic cells and antagonizes PTHrP-mediated activation of PKA. *J. Cell Sci.* **115**, 3015–3025.
101. Vortkamp, A., Pathi, S., Peretti, G. M., Caruso, E.M., Zaleske, D.J., and Tabin, C.J. (1998) Recapitulation of signals regulating embryonic bone formation during postnatal growth and in fracture repair. *Mech. Dev.* **71(1–2)**, 65–76.

102. Akiyama, H., Shigeno, C., Iyama, K., Ito, H., Hiraki, Y., Konishi, J., and Nakamura, T. (1999) Indian hedgehog in the late-phase differentiation in mouse chondrogenic EC cells, ATDC5: upregulation of type X collagen and osteoprotegerin ligand mRNAs. *Biochem. Biophys. Res. Commun.* **257**(3), 814–820.
103. Bitgood, M.J. and McMahon, A.P. (1995) *Hedgehog* and *Bmp* genes are coexpressed at many diverse sites of cell-cell interaction in the mouse embryo. *Dev. Biol.* **172**(1), 126–138.
104. Smith, A., Avaron, F., Guay, D., Padhi, B.K., and Akimenko, M.A. (2006) Inhibition of BMP signaling during zebrafish fin regeneration disrupts fin growth and scleroblast differentiation and function. *Dev. Biol.* **299**(2), 438–454.
105. He, T.-C. (2005) Distinct osteogenic activity of BMPs and their orthopaedic applications. *J. Musculoskelet. Neuronal Interact.* **5**(4), 363–366.
106. Heng, B.C., Cao, T., and Lee, E.H. (2004) Directing stem cell differentiation into the chondrogenic lineage in vitro. *Stem Cells* **22**, 1152–1167.
107. Bechara, I.J., Joazeiro, P.P., Marí-Beffa, M., Becerra, J., and Montes, G.S. (2000) Collagen affecting drugs impair regeneration of teleost tail fins. *J. Submicrosc. Cytol. Pathol.* **32**, 273–280.
108. Whitehead, G.G., Makino, S., Lien, C.-L., and Keating, M.T. (2005) *fgf20* is essential for initiating zebrafish fin regeneration. *Science* **310**, 1957–1960.
109. Tsutsumi, S., Shimazu, A., Miyazaki, K., Pan, H., Koike, C., Yoshida, E., Takagishi, K., and Kato, Y. (2001) Retention of multilineage differentiation potential of mesenchymal cells during proliferation in response to FGF. *Biochem. Biophys. Res. Commun.* **288**, 413–419. DOI 10.1006/bbrc.2001.5777.
110. Ohbayashi, N., Shibayama, M., Kurotaki, Y., Imanishi, M., Fujimori, T., Itoh, N., and Takada, S. (2002) FGF18 is required for normal cell proliferation and differentiation during osteogenesis and chondrogenesis. *Genes Dev.* **16**, 870–879.
111. Ornitz, D.M. and Marie, P.J. (2002) FGF signaling pathways in endochondral and intramembranous bone development and human genetic disease. *Genes Dev.* **16**, 1446–1465.
112. Malcolm, S. and Reardon, W. (1996) Fibroblast growth factor receptor-2 mutations and craniosynostosis. *Ann. N. Y. Acad. Sci.* **785**, 164–170.
113. Webster, M.K. and Donoghue, D.J. (1996) Constitutive activation of fibroblast growth factor receptor 3 by the transmembrane domain point mutation found in achondroplasia. *EMBO J.* **15**, 520–527.
114. Burke, D., Wilkes, D., Blundell, T.L., and Malcolm, S. (1998) Fibroblast growth factor receptors: lessons from the genes. *Trends Biochem. Sci.* **23**, 59–62.
115. Greenwald, J.A., Mehrara, B.J., Spector, J.A., Warren, S.M., Fagenholz, P.J., Smith, L.P., Bouletreau, P.J., Crisera, F.E., Ueno, H., and Longaker, M.T. (2001) *In vivo* modulation of FGF biological activity alters cranial suture fate. *Am. J. Pathol.* **158**, 441–452.
116. Iseki, S., Wilkie, A.O.M., Heath, J.K., Ishimaru, T., Eto, K., and Morriss-Kay, G.M. (1997) *Fgfr2* and *osteopontin* domains in the developing skull vault are mutually exclusive and can be altered by locally applied FGF2. *Development* **124**, 3375–3384.
117. Sarkar, S., Petiot, A., Copp, A., Ferreti, P., and Thorogood, P. (2001) FGF2 promotes skeletogenic differentiation of cranial neural crest cells. *Development* **128**, 2143–2152.
118. Santos-Ruiz, L., Santamaria, J.A., and Becerra, J. (2001) Differential expression of FGF receptors during zebrafish fin regeneration. *Int. J. Dev. Biol.* **45**(S1), S131–S132.
119. Poss, K.D., Shen, J., and Keating, M.T. (2000) Induction of *lef1* during zebrafish fin regeneration. *Dev. Dyn.* **219**, 282–286.
120. Thummel, R., Bai, S., Sarras, M.P., Jr., Song, P., McDermott, J., Brewer, J., Perry, M., Zhang, X., Hyde, D.R., and Godwin, A.R. (2006) Inhibition of zebrafish fin regeneration using in vivo electroporation of morpholinos against *fgfr1* and *msxb*. *Dev. Dyn.* **235**, 336–346.
121. Lee, Y., Grill, S., Sánchez, A., Murphy-Ryan, M., and Poss, K.D. (2005) Fgf signaling instructs position-dependent growth rate during zebrafish fin regeneration. *Development* **132**, 5173–5183.
122. Gaur, T., Lengner, C.J., Hovhannisyann, H., Bhat R.A., Bodine, P.V.N., Komm, B.S., Javed, A., van Wijnen, A.J., Stein, J.L., Stein, G.S., and Lian, J.B. (2005) Canonical WNT signaling promotes osteogenesis by directly stimulating *runx2* gene expression. *J. Biol. Chem.* **280**(39), 33132–33140.
123. Wang, W.-G., Lou, S.-Q., Ju, X.-D., Xia, K., and Xia, J.-H. (2003) In vitro chondrogenesis of human bone marrow-derived mesenchymal progenitor cells in monolayer culture: activation by transfection with TGF- β 2. *Tissue Cell* **35**, 69–77.
124. Brook, W.J., Díaz-Benjumea, F.J., and Cohen, S.M. (1996) Organizing spatial pattern in limb development. *Annu. Rev. Cell Dev. Biol.* **12**, 161–180.
125. Cohn, M.J. and Bright, P.E. (1999) Molecular control of vertebrate limb development, evolution and congenital malformations. *Cell Tissue Res.* **296**, 3–17.
126. Olsen, B.R., Reginato, A.M., and Wang, W. (2000) Bone development. *Annu. Rev. Cell Dev. Biol.* **16**, 191–220.
127. Corr, M. and Zvaifler, N.J. (2002) Mesenchymal precursor cells. *Ann. Rheum. Dis.* **61**, 3–5.
128. Suva, D., Garavaglia, G., Menetrey, J., Chapuis, B., Hoffmeyer, P., Bernheim, L., and Kindler, V. (2003) Non-hematopoietic human bone marrow contains long-lasting, pluripotential mesenchymal stem cells. *J. Cell. Physiol.* **198**, 110–118.
129. Alhadlaq, A. and Mao, J.J. (2004) Mesenchymal stem cells: isolation and therapeutics. *Stem Cells Dev.* **13**, 436–448.

130. Oakes, B.W. (2004) Orthopaedic tissue engineering: from laboratory to the clinic. *Med. J. Aust.* **180(5 Suppl)**, S35–S38.
131. Newman, S.A. and Müller, G.B. (2005) Origination and innovation in the vertebrate limb skeleton: an epigenetic perspective. *J. Exp. Zool. (Mol. Dev. Evol.)* **304B**, 593–609.
132. Vats, A., Bielby, R.C., Tolley, N.S., Nerem, R., and Polak, J.M. (2005) Stem cells. *Lancet* **366**, 592–602.
133. Zhang, X.-C., Chen, H.-Q., Huang, S.-L., Wei, J., Huang, K., Wu, Y.-F., and Bao, R. (2005) Isolation and culture of human umbilical cord vein mesenchymal stem cells and identification of their biological characteristics. *Chin. J. Cell Biol.* **27(2)**, 201–205.
134. Zhao, Y., Clark, J., and Ding, S. (2005) Genomic studies in stem cell systems. *Curr. Opin. Mol. Ther.* **7(6)**, 543–550.
135. Johnson, E.E., Urist, M.R., and Finerman, G.A. (1992) Resistant nonunions and partial or complete segmental defects of long bones. Treatment with implants of a composite of human bone morphogenetic protein (BMP) and autolyzed, antigen-extracted, allogeneic (AAA) bone. *Clin. Orthop. Relat. Res.* **277**, 229–237.
136. Nicoll, S.B., Denker, A.E., and Tuan, R.S. (1998) Mesenchymal cell-based repair of connective tissue defects: application of transforming growth factor- β superfamily members and biodegradable polymer scaffolds. *Cells Mater.* **8**, 99–122.
137. Fontes, P.A. (1999) Stem cell technology. *BMJ* **319**, 1308.
138. Krebsbach, P.H., Gu, K., Franceschi, R.T., and Rutherford, R.B. (2000) Gene therapy-directed osteogenesis: BMP-7-transduced human fibroblasts from bone *in vivo*. *Hum. Gene Ther.* **11(8)**, 1201–1210.
139. Varady, P., Li, J.Z., Cunningham, M., Beres, E.J., Das, S., Engh, J., Alden, T.D., Pittman, D.D., Kerns, K.M., Kallmes, D.F., and Helm, G.A. (2001) Morphologic analysis of BMP-9 gene therapy-induced osteogenesis. *Hum. Gene Ther.* **12(6)**, 697–710.
140. Wang, H.-S., Hung, S.-C., Peng, S.-T., Huang, C.-C., Wei, H.-M., Guo, Y.-J., Fu, Y.-S., Lai, M.-C., and Chen, C.-C. (2004) Mesenchymal stem cells in the Wharton's jelly of the human umbilical cord. *Stem Cells* **22**, 1330–1337.
141. Davila, J.C., Cezar, G.G., Thiede, M., Strom, S., Miki, T., and Trosko, J. (2004) Use and application of stem cells in toxicology. *Toxicol. Sci.* **79**, 214–223.
142. Chan, J., O'Donoghue, K., de la Fuente, J., Roberts, I.A., Kumar, S., Morgan, J.E., and Fisk, N.M. (2005) Human fetal mesenchymal stem cell as vehicles for gene delivery. *Stem Cells* **23**, 93–102.
143. Granjeiro, J.M., Oliveira, R.C., Bustos-Valenzuela, J.C., Sogayar, M.C., and Taga, R. (2005) Bone morphogenetic proteins: from structure to clinical use. *Braz. J. Med. Biol. Res.* **38(10)**, 1463–1473.
144. Saad, B., Matter, S., Ciardelli, G., Uhlenschmid, G.K., Welti, M., Neuenschwander, P., and Suter, U.W. (1996) Interactions of osteoblasts and macrophages with biodegradable and highly porous polyesterurethane foam and its degradation products. *J. Biomed. Mater. Res.* **32(3)**, 355–366.
145. Williams, C.G., Kim, T.K., Taboas, A., Malik, A., Manson, P., and Elisseeff, J. (2003) *In vitro* chondrogenesis of bone marrow-derived mesenchymal stem cells in a photopolymerizing hydrogel. *Tissue Eng.* **9(4)**, 679–688.
146. Shin, M. (2004) *In vivo* bone tissue engineering using mesenchymal stem cells on a novel electrospun nanofibrous scaffold. *Tissue Eng.* **10(1–2)**, 33–41.
147. Mauney, J.R., Jaquiéry, C., Volloch, V., Heberer, M., Martin, I., and Kaplan, D.L. (2005) *In vitro* and *in vivo* evaluation of differentially demineralized cancellous bone scaffolds combined with human bone marrow stromal cells for tissue engineering. *Biomaterials* **26**, 3173–3185.
148. Becerra, J., Andrades, J.A., Cifuentes, M., and Guerado, E. (2005) Cartilage and bone repair composition. PCT/ES2005/000287, WO2005/112542. Universidad de Málaga.

This article should be cited as follows:

Marí-Beffa, M., Santamaría, J.A., Murciano, C., Santos-Ruiz, L., Andrades, J.A., Guerado, E., and Becerra, J. (2007) Zebrafish fins as a model system for skeletal human studies. *TSW Development & Embryology* **2**, 112–125. DOI 10.1100/tswde.2007.162.
