

First report of *Coxiella burnetii* and *Borrelia burgdorferi* sensu lato in poultry red mites, *Dermanyssus gallinae* (Mesostigmata, Acari), related to urban outbreaks of dermatitis in Italy

D. A. Raele, D. Galante, N. Pugliese, G. La Salandra, M. Lomuto and M. Assunta Cafiero

Istituto Zooprofilattico Sperimentale della Puglia e della Basilicata, Foggia, Italy

Abstract

The poultry red mite (PRM), *Dermanyssus gallinae*, is a nonburrowing haematophagous nest-dwelling ectoparasite of birds; occasionally it bites humans, inducing dermatitis. The possibility that this parasite may also be involved in transmission of pathogens is an additional concern. We investigated the presence of zoonotic agents in PRMs from bird nests and pets, and related them to urban outbreaks of dermatitis. A total of 98 PRMs from 12 outbreaks of PRM dermatitis that occurred in Italian cities from 2001 to 2017 were molecularly investigated for detection of *Coxiella* spp. (16S rRNA), *Chlamydomphila* spp. (16S rRNA), *Rickettsia* spp. (17 kDa protein-encoding gene), *Borrelia burgdorferi* sensu lato (*groEL* gene) and *Bartonella* spp. (16S–23S rRNA intergenic spacer). Of the 12 tested mite pools, one was positive for *Coxiella burnetii* (100% identity) and two for *B. burgdorferi* sensu lato (99% with *Borrelia afzelii*). For the first time, the presence of *B. burgdorferi* sensu lato and *C. burnetii* is reported in PRMs from urban areas. Birds, mainly pigeons, can harbour both pathogens. Therefore, birds and their nest-dwelling PRMs may play a role in the epidemiology of these infections.

© 2018 Published by Elsevier Ltd.

Keywords: *Borrelia afzelii*, *Coxiella burnetii*, *Dermanyssus gallinae*, Public health, Vectorial role, Zoonotic mites

Original Submission: 4 January 2018; **Revised Submission:** 17 January 2018; **Accepted:** 18 January 2018

Article published online: 22 February 2018

Corresponding author: M. Assunta Cafiero, Istituto Zooprofilattico Sperimentale della Puglia e della Basilicata, Via Manfredonia, 20-71 100 Foggia, Italy.

E-mail: mariaassunta.cafiero@izspb.it

Introduction

Zoonotic haematophagous mites belonging to the *Dermanyssidae* and *Macronyssidae* families (Mesostigmata, Acari) are well known for their capacity to attack and bite humans when their natural primary hosts (birds or rodents) are not available [1,2]. In particular, the cosmopolitan poultry red mite (PRM) *Dermanyssus gallinae* (De Geer, 1778) represents relevant veterinary and medical issues [3]. In Europe, most human cases of dermanyssosis are due to exposure to infested poultry in industrial or rural farms. Thus, dermanyssosis is considered an occupational hazard for poultry industry operators [4].

However, an increasing number of PRM dermatitides is being reported from urban dwellers. Urban outbreaks are usually linked to infested bird nests, mainly those of pigeons, located on window ledges or in air conditioners located in close proximity to windows [3,5–7]. More occasionally, humans may come in contact with PRM through infested pets such as canaries and gerbils [7,8].

After the mite bite and the inoculation of salivary fluids, subjects develop erythematous, papular eruptions usually associated with itching. Apart from its potential role in eliciting allergic reactions, the possibility that *D. gallinae* may act as a vector of infectious diseases should not be overlooked. However, although this vector role remains to be definitively confirmed, a large number of microorganisms have been found associated to PRMs [3,9], including pathogens such as *Salmonella enterica* [9], *Chlamydia psittaci* [10] and avian influenza A virus [11]. However, the available information is scarce, as it is mainly focused on poultry and animal pathogens, and such analyses have not been performed on PRMs causing human urban outbreaks, with the exception of a study that revealed the



FIG. 1. Skin eruptions caused by *Dermanyssus gallinae* (poultry red mite) bites in 54-year-old woman.

presence of *Bartonella quintana* in *Dermanyssus* sp. mites during an outbreak of trench fever in the Czech Republic [12].

We investigated the presence of zoonotic agents in PRMs collected from urban patients with pruritus and dermatitis.

Materials and methods

Red mite collection

During 2016 and 2017, a total of 98 PRM samples related to 12 outbreaks of itching dermatitis were sent to the Medical Entomology Laboratory of the Istituto Zooprofilattico Sperimentale della Puglia e della Basilicata. Parasites were manually collected in 12 dermanysiosis foci from a hospital, a public office and ten private residences, for a total of 31 subjects. The possible origin of mites were pigeon nests (10/12), sparrow nests (1/12) and pet canaries (1/12). All patients had pruritic, erythematous papules that in some cases were relieved by systemic and/or local antihistaminic and corticosteroid treatment (Fig. 1). Collected mites were identified according to morphologic keys [1,2,13] and stored in plastic vials in 70% ethanol.

DNA extraction and molecular analyses

Mites from each focus were pooled, for a total of 12 studied pools. The origin and size of each pool are listed in Table 1. Total DNA was extracted from each pool by using the DNeasy Blood and Tissue Kit (Qiagen, Milan, Italy) following the manufacturer's instruction. Before DNA extraction, arthropods were ground in lysis buffer with sterile mortars and pestles. Five distinct PCR assays were performed, using specific primers for *Coxiella* spp. (16S rRNA) [14], *Chlamydia* spp. (16S rRNA) [15], *Rickettsia* spp. (17 kDa protein-coding gene) [16], *Borrelia burgdorferi* sensu lato (*groEL* gene) [17] and *Bartonella* spp. (16S–23S rRNA intergenic spacer) [18]. Amplicons were sequenced, and nucleotide sequences were compared to GenBank using BLAST (https://blast.ncbi.nlm.nih.gov/Blast.cgi?PROGRAM=blastn&PAGE_TYPE=BlastSearch&LINK_LOC=blasthome).

Samples previously tested positive for *Bartonella henselae*, *Coxiella endosymbiont of Rhipicephalus bursa*, *Rickettsia raoulti*, *Chlamydia abortus* and *Borrelia garinii* were used as positive

TABLE 1. Cases of dermanysiosis and detected pathogens

Case (date/region)	Collection site	PRM source	No. and sex of affected people	No. of pools (size)	Pool positive	Detected pathogen species	GenBank accession no.
2017/09 Puglia	Bedroom	Pigeon nest	1F	1 (5)	–	–	–
2017/06 Puglia	Bedroom	Pigeon nest	1F, 1M	1 (10)	–	–	–
2015/09 Puglia	Bedroom	Pet canary	1F	1 (10)	–	–	–
2011/10 Puglia	Hospital	Pigeon nest	4 (2M, 2F)	1 (10)	–	–	–
2011/10 Puglia	Bedroom	Pigeon nest	3 (2M, 1F)	1 (8)	<i>Borrelia burgdorferi</i> sensu lato	<i>Borrelia afzelii</i>	KY828976
2009/06 Puglia	Bedroom	Sparrow nest	1F	1 (5)	<i>B. burgdorferi</i> sensu lato	<i>B. afzelii</i>	KY828977
2008/05 Basilicata	Bedroom	Pigeon nest	3 (1M, 2F)	1 (10)	<i>Coxiella</i> sp.	<i>Coxiella burnetii</i>	KU215908.1
2007/05 Puglia	Bedroom	Pigeon nest	4 (1M, 3)	1 (10)	–	–	–
2007/03 Campania	Bedroom	Pigeon nest	1M	1 (5)	–	–	–
2005/10 Puglia	Bedroom	Pigeon nest	2 (1M, 1F)	1 (10)	–	–	–
2005/06 Puglia	Public office	Pigeon nest	7 (3M, 4F)	1 (10)	–	–	–
2001/05 Basilicata	Bedroom	Pigeon nest	2 (1M, 1F)	1 (5)	–	–	–
Total			31	98	3 pools		

PRM, poultry red mite.

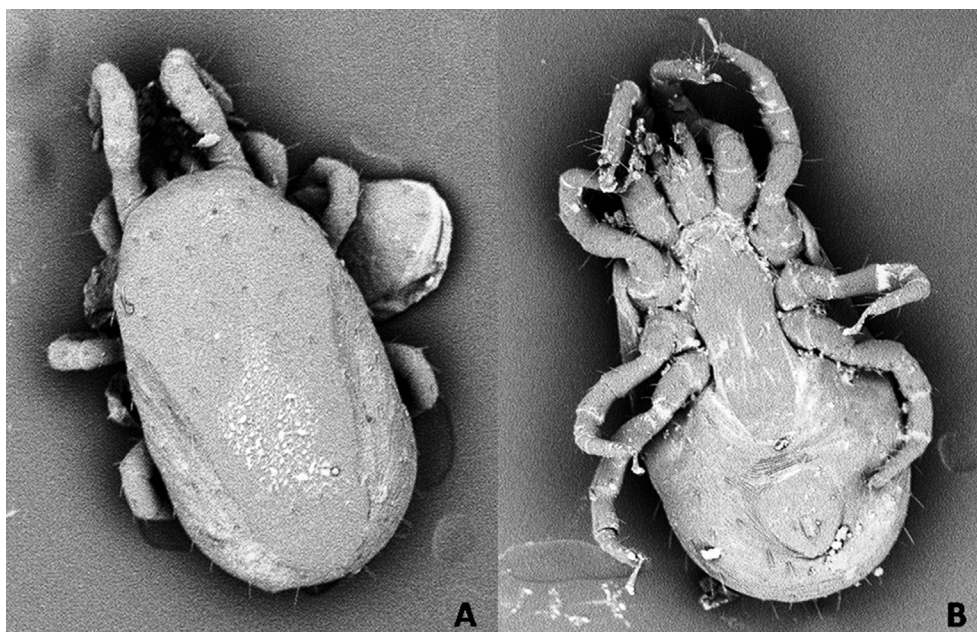


FIG. 2. Scanning electron microscopy photographs of *Dermanyssus gallinae* female collected from outbreak. (A) Dorsal view. (B) Ventral view.

controls. For each PCR reaction, two negative control samples were prepared by adding water and DNA from human specific pathogen-free (SPF) blood instead of DNA from mites.

Phylogenetic analysis

Nucleotide sequences from the 16S rRNA and *groEL* amplicons of *Coxiella* spp. and *B. burgdorferi* sensu lato, respectively, were separately aligned with the matching sequences from GenBank (Supplementary Tables S1 and S2, respectively) using ClustalW in MEGA7 [19]. Sequences from *Legionella* sp. (RefSeq accession no. NR_116014) and *Borrelia anserina* (CP013704) were used as outgroups, respectively.

For both organisms, phylogenetic inferences were obtained by maximum-likelihood estimation using PhyML software [19], with 1000 nonparametric bootstrap replicates. The best-fitting evolutionary models were determined by the Model test script [20] implemented for the web at Find Model (<http://www.hiv.lanl.gov/content/sequence/findmodel/findmodel.html>).

Phylogenetic analysis was carried out using the TN+G model ($\alpha = 0.24$) for the 16S rRNA gene of *Coxiella* spp., and the HKY+G model ($\alpha = 0.16$) for the *groEL* gene of *B. burgdorferi* sensu lato.

Results

Morphologic identification of mites

All collected mite specimens were identified as *Dermanyssus gallinae* (De Geer, 1778) (Fig. 2).

Mite-borne pathogens detected in examined red mite pools

Pathogen detection revealed that one pool out of 12 was positive for *Coxiella* sp., as were two pools for *B. burgdorferi* sensu lato (Table 1). The *Coxiella* sp. amplicon exhibited 100% identity with *Coxiella burnetii*. The sequence was submitted to GenBank under accession number KU215908. The phylogenetic analysis confirmed the identification of *C. burnetii*, as shown in Fig. 3.

The two positive pools were made of mites collected in a pigeon nest and a sparrow nest, respectively. The nucleotide sequences from the two *B. burgdorferi* sensu lato amplicons submitted to GenBank under accession numbers KY828976 and KY828977, respectively, were identical but exhibited a 99% identity with *Borrelia afzelii*. The phylogenetic analysis also confirmed the identification, as demonstrated in Fig. 4.

Discussion

Dermanyssus gallinae is well known for being associated with a number of microorganisms, but to date little attention has been paid to its potential role as a vector or reservoir of human pathogens. Our findings demonstrate that zoonotic pathogens might be associated to *D. gallinae*. In particular, the detection of *C. burnetii* in mites causing human dermatitis may represent a major concern, as the pathogen is the agent of the Q fever, a worldwide zoonosis [20]. Previous studies noted that birds living in urban environments, mostly pigeons,

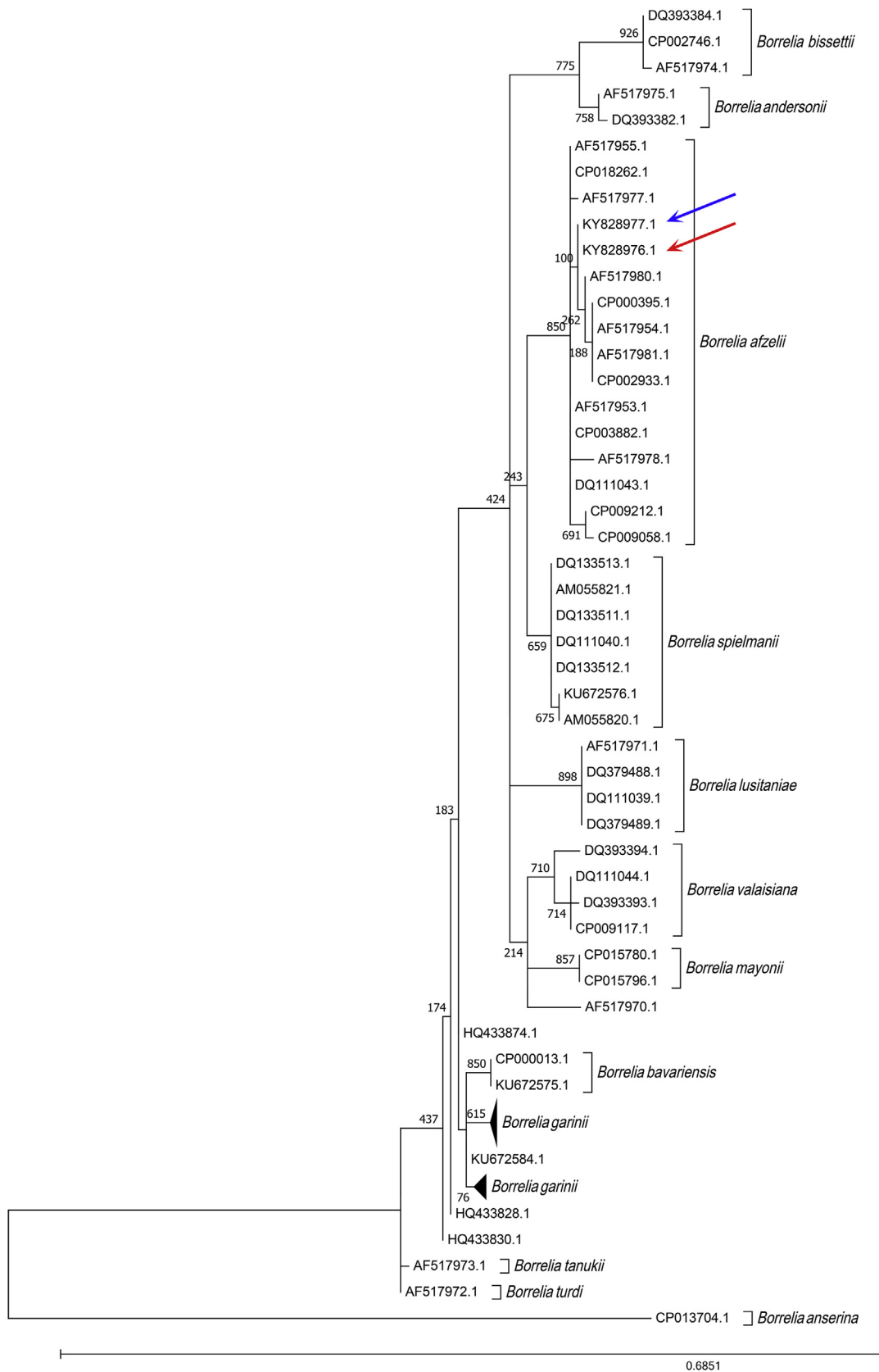


FIG. 4. Maximum-likelihood phylogenetic analysis of *groEL* gene from *Borrelia burgdorferi* sensu lato detected by PCR and sequencing. Bootstrap values are shown at nodes. Details about sequences included in analysis are provided in [Supplementary Table S1](#). Blue and red arrows show position of *Borrelia afzelii* strains detected in this study.

of the agents of Lyme borreliosis in humans [25]. This disease is a multisystemic infection caused by spirochetes belonging to the *B. burgdorferi* sensu lato complex. In Europe, most genospecies of that group are specifically host associated [26]. For example, rodents and insectivores are usually infected by *B. afzelii* or *B. garinii* [27], while birds are frequently associated with *B. garinii* or *B. valasiana* [28]. However, some authors suspect that birds may also play a role in the transmission of *B. afzelii*.

Although Lyme disease is considered essentially to be a tick-borne disease [29], other species of blood-sucking parasites are able to spread the spirochetes [30–32]. This study extends the group of potential Lyme borreliosis vectors by also including *D. gallinae*. Overall, our study demonstrates the association between *D. gallinae* and pathogens such as *C. burnetii* and *B. afzelii* that are potentially dangerous for animals and humans. These findings should focus attention on the frequent infestation of synanthropic birds, mainly pigeons, by *D. gallinae*, including in urban areas [22].

To our knowledge, no study has yet been carried out to ascertain the ability of *D. gallinae* to transmit disease fever related to *C. burnetii* or Lyme borreliosis to humans, but this possibility should be no longer be neglected. Unfortunately, no data were available about the serologic response of patients bitten by infected *C. burnetii* and *B. afzelii*, respectively, and no blood or biosamples were collected from these patients, which prevented further analysis from being performed. Therefore, we suggest that physicians, dermatologists and clinicians in general consider carrying out more in-depth investigations in cases of human dermanysiosis.

Conflict of interest

None declared.

Appendix A. Supplementary data

Supplementary data related to this article can be found at <https://doi.org/10.1016/j.nmni.2018.01.004>.

References

- [1] Varma MGR. Ticks and mites (*Acari*). In: Lane RP, Crosskey RW, editors. Medical insects and arachnids. London: Chapman & Hall; 1993. p. 597–658.
- [2] Baker AS. Mites and ticks of domestic animals. An identification guide and information source. London: Natural History Museum, London; Stationery Office; 1999.
- [3] George DR, Finn RD, Graham KM, Mul MF, Maurer V, Moro CV, et al. Should the poultry red mite *Dermanyssus gallinae* be of wider concern for veterinary and medical science? Parasit Vectors 2015;25:178.
- [4] Cafiero MA, Galante D, Camarda A, Giangaspero A, Sparagano O. Why dermanysiosis should be listed as an occupational hazard. Occup Environ Med 2011;68:628.
- [5] Haag-Wackernagel D, Bircher AJ. Ectoparasites from feral pigeons affecting humans. Dermatology 2010;220:82–92.
- [6] Bellanger AP, Bories C, Foulet F, Bretagne S, Botterel F. Nosocomial dermatitis caused by *Dermanyssus gallinae*. Infect Control Hosp Epidemiol 2008;29:282–3.
- [7] Cafiero MA, Galante D, Raele DA, Nardella MC, Piccirilli E, Lomuto M. Outbreaks of *Dermanyssus gallinae* (*Acari*, *Mesostigmata*) related dermatitis in humans in public and private residences, in Italy (2001–2017): an expanding skin affliction. J Clin Case Rep 2017;7(10):1035. <https://doi.org/10.4172/2165-7920.10001035>.
- [8] Lucky AW, Sayers C, Argus JD, Lucky A. Avian mite bites acquired from a new source—pet gerbils: report of 2 cases and review of the literature. Arch Dermatol 2001;137:167–70.
- [9] Valiente Moro C, De Luna CJ, Tod A, Guy JH, Sparagano AOE, Zenner L. The poultry red mite, *Dermanyssus gallinae*: a potential vector of pathogenic agents. Exp Appl Acarol 2009;48:93–104.
- [10] Circella E, Pugliese N, Todisco G, Cafiero MA, Sparagano OA, Camarda A. *Chlamydia psittaci* infection in canaries heavily infested by *Dermanyssus gallinae*. Exp Appl Acarol 2011;55:329–38.
- [11] Boseret G, Losson B, Mainil JG, Thiry E, Saegerman C. Zoonoses in pet birds: review and perspectives. Vet Res 2013;20(44):36.
- [12] Melter O, Arvand M, Votycka J, Hulinska D. *Bartonella quintana* transmission from mite to family with high socio-economic status. Emerg Infect Dis 2012;18:163–5.
- [13] Di Palma A, Giangaspero A, Cafiero MA, Germinara GS. A gallery of the key characters to ease identification of *Dermanyssus gallinae* (*Acari*: *Gamasida*: *Dermanyssidae*) and allow differentiation from *Ornithonyssus sylviarum* (*Acari*: *Gamasida*: *Macronyssidae*). Parasit Vectors 2014;5:104.
- [14] Almeida AP, Marcili A, Leite RC, Nieri-Bastosa FA, Domingues LN, Martins JR, et al. *Coxiella* symbiont in the tick *Ornithodoros rostratus* (*Acari*: *Argasidae*). Ticks Tick Borne Dis 2012;3:203–6.
- [15] Thomas V, Casson N, Greub G. *Criblamydia sequanensis*, a new intracellular *Chlamydiales* isolated from Seine river water using amoebal coculture. Environ Microbiol 2006;8:2125–35.
- [16] Webb L, Mitchell C, Malloy DC, Dasch GA, Azad AF. Detection of murine typhus infection in fleas by using the polymerase chain reaction. J Clin Microbiol 1990;28:530–4.
- [17] Gil H, Barral M, Escudero R, Garcia-Perez AL, Anda P. Identification of a new *Borrelia* species among small mammals in areas of Northern Spain where Lyme disease is endemic. Appl Environ Microbiol 2005;71:1336–45.
- [18] Roux V, Raoult D. The 16S-23S rRNA intergenic spacer region of *Bartonella (Rochalimaea)* species is longer than usually described in other bacteria. Gene 1995;156:107–11.
- [19] Kumar S, Stecher G, Tamura K. MEGA7: Molecular evolutionary Genetics analysis version 7.0 for bigger datasets. Mol Biol Evol 2016;33:1870–4.
- [20] Filippitzi ME, Goumperis T, Robinson T, Saegerman C. Microbiological zoonotic emerging risks, transmitted between livestock animals and humans. Transbound Emerg Dis 2007–2015;2017(64):1059–70.
- [21] Stein A, Raoult D. Pigeon pneumonia in provence: a bird-borne Q fever outbreak. Clin Infect Dis 1999;29:617–20.
- [22] Haag-Wackernagel D, Moch H. Health hazards posed by feral pigeons. J Infect 2004;48:307–13.
- [23] Zemskaia AA, Pchelkina AA. Experimental infection of ticks *Dermanyssus gallinae* Redi and *Bdelonyssus bacoti* Hirst with Q fever. Dokl Akad Nauk SSSR 1955;101:391–2.
- [24] Eldin C, Mélenotte C, Mediannikov O, Ghigo E, Million M, Edouard S, et al. From Q fever to *Coxiella burnetii* infection: a paradigm change. Clin Microbiol Rev 2017;30:115–90.

- [25] Pritt BS, Mead PS, Hoang Johnson DK, Neitzel DF, Respicio-Kingry LB, Davis JP, et al. Identification of a novel pathogenic *Borrelia* species causing Lyme borreliosis with unusually high spirochaetaemia: a descriptive study. *Lancet Infect Dis* 2016;16:556–64.
- [26] Kurtenbach K, Hanincová K, Tsao JI, Margos G, Fish D, Ogden NH. Fundamental processes in the evolutionary ecology of Lyme borreliosis. *Nat Rev Microbiol* 2006;4:660–9.
- [27] Hanincová K, Schäfer SM, Etti S, Sewell HS, Taragelová V, Ziak D, et al. Association of *Borrelia afzelii* with rodents in Europe. *Parasitology* 2003;126:11–20.
- [28] Hanincová K, Taragelová V, Koci J, Schäfer SM, Hails R, Ullmann AJ, et al. Association of *Borrelia garinii* and *B. valaisiana* with songbirds in Slovakia. *Appl Environ Microbiol* 2003;69:2825–30.
- [29] Anderson JF. Epizootiology of Lyme borreliosis. *Scand J Infect Dis Suppl* 1991;77:23–34.
- [30] Melaun C, Zotzmann S, Santaella VG, Werblow A, Zumkowski-Xylander H, Kraiczy P, et al. Occurrence of *Borrelia burgdorferi* s.l. in different genera of mosquitoes (*Culicidae*) in Central Europe. *Ticks Tick Borne Dis* 2016;7:256–63.
- [31] Netušil J, Žáková A, Vostal K, Norek A, Stanko M. The occurrence of *Borrelia burgdorferi* sensu lato in certain ectoparasites (*Mesostigmata*, *Siphonaptera*) of *Apodemus flavicollis* and *Myodes glareolus* in chosen localities in the Czech Republic. *Acta Parasitol* 2013;58:337–41.
- [32] Magnarelli LA, Anderson JF. Ticks and biting insects infected with the etiologic agent of Lyme disease, *Borrelia burgdorferi*. *J Clin Microbiol* 1988;26:1482–6.