

ORIGINAL ARTICLE

Recurrent hyperactive *ESR1* fusion proteins in endocrine therapy-resistant breast cancer

R. J. Hartmaier^{1,2,3*†}, S. E. Trabucco^{1†}, N. Priedigkeit^{2,3}, J. H. Chung¹, C. A. Parachoniak¹, P. Vanden Borre¹, S. Morley¹, M. Rosenzweig¹, L. M. Gay¹, M. E. Goldberg¹, J. Suh¹, S. M. Ali¹, J. Ross¹, B. Leyland-Jones⁴, B. Young⁴, C. Williams⁴, B. Park⁵, M. Tsai⁶, B. Haley⁷, J. Peguero⁸, R. D. Callahan⁹, I. Sachelarie¹⁰, J. Cho¹¹, J. M. Atkinson³, A. Bahreini^{3,12,13}, A. M. Nagle^{2,3}, S. L. Puhalla^{3,14}, R. J. Watters^{2,3,15}, Z. Erdogan-Yildirim^{3,12}, L. Cao^{3,16}, S. Oesterreich^{2,3}, A. Mathew¹⁴, P. C. Lucas¹⁷, N. E. Davidson¹⁴, A. M. Brufsky¹⁴, G. M. Frampton¹, P. J. Stephens¹, J. Chmielecki¹ & A. V. Lee^{2,3*}

¹Foundation Medicine Inc., Cambridge; ²Department of Pharmacology and Chemical Biology, UPMC Hillman Cancer Center, University of Pittsburgh, Pittsburgh; ³Women's Cancer Research Center, Magee-Women's Research Institute, Pittsburgh; ⁴Department of Molecular and Experimental Medicine, Avera Cancer Institute, Sioux Falls; ⁵Sidney Kimmel Comprehensive Cancer Center, Johns Hopkins, Baltimore; ⁶Minnesota Oncology, Minneapolis; ⁷UT Southwestern Medical Center, Dallas; ⁸Oncology Consultants Research Department, Houston; ⁹UCLA Medical Center, Santa Monica; ¹⁰Carlisle Regional Medical Center, Carlisle; ¹¹New Bern Cancer Care, New Bern; ¹²Department of Human Genetics, University of Pittsburgh, Pittsburgh, USA; ¹³Department of Genetics and Molecular Biology, Isfahan University of Medical Sciences, Isfahan, Iran; ¹⁴Departments of ¹⁴Medicine; ¹⁵Orthopaedic Surgery, University of Pittsburgh, Pittsburgh, USA; ¹⁶Central South University Xiangya School of Medicine, China; ¹⁷Department of Pathology, University of Pittsburgh, Pittsburgh, USA

*Correspondence to: Dr Adrian V. Lee, Department of Pharmacology & Chemical Biology and Human Genetics, University of Pittsburgh, 204 Craft Avenue, Pittsburgh, 15213 PA, USA. Tel: +1-412-641-8554; E-mail: leeav@upmc.edu

Dr Ryan J. Hartmaier, Cancer Genomics, Foundation Medicine Inc., 150 Second Street, Cambridge, MA 02141, USA. Tel: +1-857-242-7286; E-mail: rhartmaier@foundationmedicine.com

†Both authors contributed equally as co-first authors.

Background: Estrogen receptor-positive (ER-positive) metastatic breast cancer is often intractable due to endocrine therapy resistance. Although *ESR1* promoter switching events have been associated with endocrine-therapy resistance, recurrent *ESR1* fusion proteins have yet to be identified in advanced breast cancer.

Patients and methods: To identify genomic structural rearrangements (REs) including gene fusions in acquired resistance, we undertook a multimodal sequencing effort in three breast cancer patient cohorts: (i) mate-pair and/or RNAseq in 6 patient-matched primary-metastatic tumors and 51 metastases, (ii) high coverage (>500×) comprehensive genomic profiling of 287–395 cancer-related genes across 9542 solid tumors (5216 from metastatic disease), and (iii) ultra-high coverage (>5000×) genomic profiling of 62 cancer-related genes in 254 ctDNA samples. In addition to traditional gene fusion detection methods (i.e. discordant reads, split reads), *ESR1* REs were detected from targeted sequencing data by applying a novel algorithm (copyshift) that identifies major copy number shifts at rearrangement hotspots.

Results: We identify 88 *ESR1* REs across 83 unique patients with direct confirmation of 9 *ESR1* fusion proteins (including 2 via immunoblot). *ESR1* REs are highly enriched in ER-positive, metastatic disease and co-occur with known *ESR1* missense alterations, suggestive of polyclonal resistance. Importantly, all fusions result from a breakpoint in or near *ESR1* intron 6 and therefore lack an intact ligand binding domain (LBD). *In vitro* characterization of three fusions reveals ligand-independence and hyperactivity dependent upon the 3' partner gene. Our lower-bound estimate of *ESR1* fusions is at least 1% of metastatic solid breast cancers, the prevalence in ctDNA is at least 10× enriched. We postulate this enrichment may represent secondary resistance to more aggressive endocrine therapies applied to patients with *ESR1* LBD missense alterations.

Conclusions: Collectively, these data indicate that N-terminal *ESR1* fusions involving exons 6–7 are a recurrent driver of endocrine therapy resistance and are impervious to ER-targeted therapies.

Key words: breast cancer, endocrine therapy resistance, *ESR1* fusion, genomic profiling, structural variation, genomic profiling

Introduction

Inhibiting estrogen receptor alpha (ER α /ER/*ESR1*) activity in estrogen receptor-positive (ER-positive) breast cancer is one of the most successful targeted therapy strategies in cancer. ER-targeted endocrine therapies reduce ligand-mediated ER signaling and can be grouped into two major classes: (i) selective ER modulators/degraders that inhibit estradiol (E2) from binding ER and (ii) aromatase inhibitors that are used in postmenopausal women to reduce E2 production. Both therapy classes disrupt the interaction of estrogen with the ER ligand binding domain (LBD).

Despite the success of these agents, many ER-positive tumors recur and become resistant to endocrine therapy [1, 2]. Although crosstalk with other growth factor pathways, such as HER2, appears to contribute to resistance [3], recent data indicate that acquired *ESR1* missense alterations are a common mechanism for resistance, being present in approximately 20–30% of ER-positive recurrent breast cancers [4–7].

Genomic structural rearrangements (REs) produce critical driver alterations in many cancer types [8–10]. In breast cancer, examples of noncoding promoter switching gene fusions have been shown to be recurrent in advanced disease [11, 12], however, only a single example of an ER-alpha protein fusion in a xenograft model (*ESR1-YAPI*) has been reported [13].

Here, we present a detailed view of RE events in recurrent ER-positive metastatic breast cancer. We identify recurrent *ESR1* fusion proteins eliminating the LBD and functionally characterize them as hyperactive and ligand-independent.

Methods

Detailed descriptions of patient samples/methods are presented in [supplementary methods](#), available at *Annals of Oncology* online.

Normal-primary-metastasis tumor paired tissues from 6 advanced breast cancer patients and 51 unpaired metastatic tumors were obtained from the University of Pittsburgh Health Science Tissue Bank (HSTB) following approval from local Institutional Review Board (IRB# PRO11060660, 11100645, 10050461, and 0506140). Mate-pair sequencing and/or RNAseq was performed to identify REs and fusion transcripts.

Comprehensive genomic profiling was performed on 9542 solid tumor samples and 254 blood samples from breast cancer patients in a CLIA-certified, New York State-, and CAP-accredited laboratory (Foundation Medicine, Cambridge, MA) [14, 15]. In addition to identification of substitutions, short insertions/deletions, rearrangements, and copy number changes, shifts in copy number (*copyshift*) at specific rearrangement hotspots were identified to increase sensitivity of rearrangement calls. Briefly, log₂ normalized data were compared on each side of previously described RE hotspots. *Copyshift*-positive was defined as significant differences ($P < 0.01$ by two-tailed *t*-test) and an absolute drop in log₂ ratio of ≥ 0.2 .

Results

Discovery of *ESR1* fusion proteins in recurrent breast cancer

To examine the impact of REs on ER-positive breast cancer progression and therapy resistance, we collected metachronous, patient-matched, primary-recurrent breast cancer tissues from six patients (Pitt-1–Pitt-6), with a median time to recurrence of

7.3 years ([supplementary Figure S1 and Tables S1 and S2](#), available at *Annals of Oncology* online). In total, 18 tissue samples were available: 4 normal, 4 primary tumor (PrT), and 10 recurrences/metastases from diverse sites including local recurrence (LoR), contralateral breast metastasis (CoM), lymph node (LnM), chest wall (ChM), lung (LuM), liver (LiM), bone (BoM), and brain (BrM).

DNA mate-pair and RNA sequencing were applied to identify REs and fusion transcripts. To assess the biological impact of genomic REs, we focused our analysis on those with both ends overlapping genic regions (bigenic REs) and supporting RNAseq evidence of fusion transcripts (Figure 1A). On average, only 7% of bigenic REs produced fusion transcripts (average: 1.8 expressed bigenic REs per tumor; [supplementary Tables S3–S5](#), available at *Annals of Oncology* online).

This analysis identified a fusion between estrogen receptor- α (*ESR1*) and disabled-2 (*DAB2*) in a supraclavicular LnM in Pitt-1 (Figure 1A and B, [supplementary Figure S2](#), available at *Annals of Oncology* online). Of note, focal copy number amplifications were also seen overlapping with both ends of the translocation only in LnM (Figure 1A inset), a characteristic often seen around REs [16, 17]. The fusion transcript is in-frame and joins *ESR1* exons 1–6 with *DAB2* exons 3–15. OncoFuse is a naive bayesian classifier built to predict the oncogenic potential of fusion genes [18] and this showed the *ESR1–DAB2* fusion to have a score of 0.99 ($P < 0.0001$). Notably, the location of the fusion junction within *ESR1* was identical to the *ESR1-YAPI* fusion previously reported in a xenograft model [13]. Expression of the transcript was confirmed to be specific to Pitt-1 LnM by RT-PCR (Figure 1C) and the protein product was confirmed in Pitt-1 LnM by immunoblot (Figure 1D).

RNAseq was then performed on a set of 51 breast cancer metastases. A second in-frame fusion protein (*ESR1-GYG1*) with an identical *ESR1* breakpoint was identified in an ER-positive bone metastasis (Pitt-7) and subsequently validated with RT-PCR and immunoblot (Figure 1E–G). This discovery prompted us to hypothesize that *ESR1* fusion proteins with polygamous 3' partners eliminating the LBD may be a recurrent mechanism of endocrine therapy resistance.

ESR1 fusion proteins are recurrent in ER-positive metastatic breast cancer

To test this hypothesis, we examined hybrid-capture-based target sequencing data from a cohort of 9542 breast tumors and a cohort of 254 ctDNA samples from patients with advanced breast cancer (Foundation Medicine; abbreviated as FMI). It should be emphasized that this approach is not designed to detect *ESR1* fusions but is used to provide additional evidence of recurrent *ESR1* fusions rather than to assess their prevalence.

Similar *ESR1* fusions were identified in four solid tumors (*ESR1-SOX9*, *ESR1-MTHFD1L*, *ESR1-PLKHG1*, and *ESR1-TFG*) and three ctDNA samples (*ESR1-NKAIN2*, *ESR1-AKAP12*, and *ESR1-CDK13*; Figure 2A). Other nonfusion-producing REs involving *ESR1* were identified in 38 additional tumors as follows: intra-*ESR1* REs ($n = 17$), no partner gene/noncoding region ($n = 11$), incorrect orientation of genes ($n = 8$), or *ESR1-CCDC170* promoter rearrangement [11] ($n = 2$). These data establish that *ESR1* fusions are recurrent in metastatic ER-positive

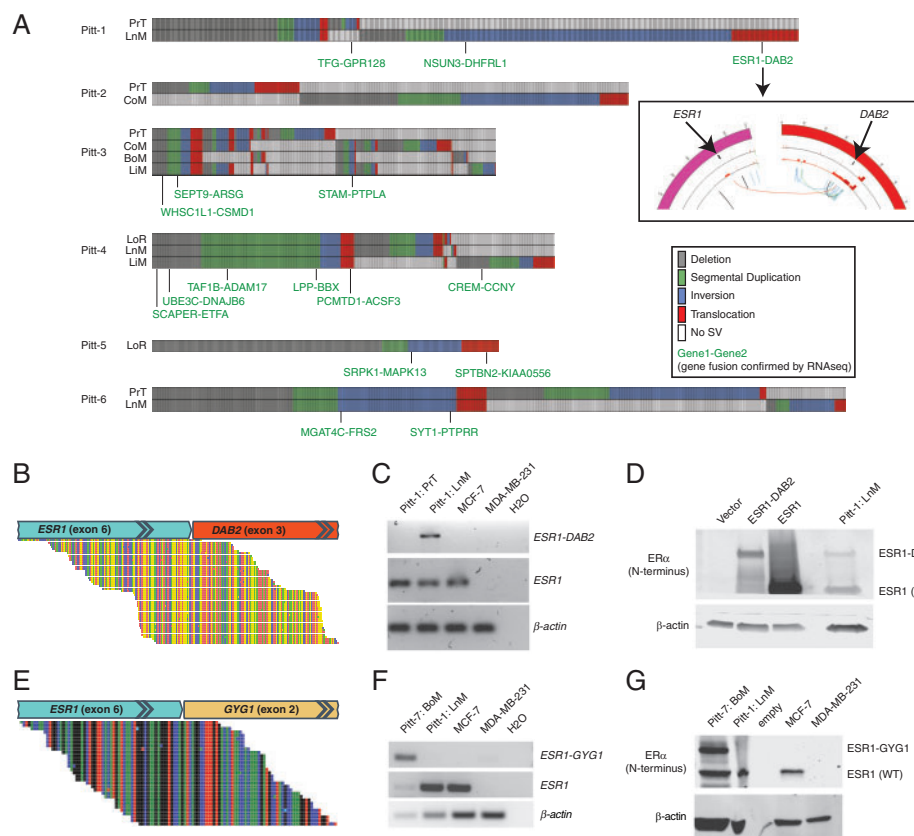


Figure 1. Rearrangements (REs) in metastatic breast cancer and the identification of *ESR1* fusion proteins. (A) Tileplots show the distribution of REs across tumors from Pitt patients 1–6. REs with breakpoints in two genes and supporting RNAseq gene fusion evidence are indicated in green. (inset) Circos plot of copy number variation data for primary (outer ring) and nodal recurrence (inner ring) and structural variants specific to the nodal recurrence (arcs in center). (B, E) RNAseq split read evidence, (C, F) RT-PCR validation, and (D, G) immunoblot of *ESR1* fusions in Pitt-1 and Pitt-7, respectively. (D) Overexpression in HEK293 cells was used for positive controls.

breast cancer, albeit with unique 3' partners, with junctions clustering between *ESR1* exons 6 and 7.

Detailed clinical histories were available for four patients with tumors containing *ESR1* fusions (Pitt-1, Pitt-7, FMI-1, and FMI-52; Figure 2B–D; supplementary Table S9, available at *Annals of Oncology* online). In all cases, the *ESR1* fusion was identified in a recurrence following extensive ER-targeted endocrine therapies.

The clinical history of FMI-1 (*ESR1-SOX9*) is an illustrative case to demonstrate the importance of *ESR1* fusions in disease progression (Figure 2C). The patient presented with Stage IV ER-positive, PR-negative, HER2-positive invasive ductal carcinoma with metastatic disease to the liver which was initially treated effectively with HER2- and ER-targeted therapies. However, the liver metastasis biopsy obtained late in disease progression (containing *ESR1-SOX9*) lost HER2 amplification and become strongly ER/PR-positive. This strongly suggests that the *ESR1-SOX9* fusion enabled the ER-positive portion of the tumor to become the dominant clone over the HER2 portion.

FMI-52 presented with a liver metastasis after receiving an aromatase inhibitor for 2 years. Despite switching to fulvestrant and adding various chemotherapy agents, the disease continued to progress. Late in advanced disease, a liver biopsy revealed the presence of the *copyshift* event likely explaining the resistance to ER-targeted therapies.

ESR1 fusions are ligand-independent and often hyperactive

To better understand the functional impact of these fusions of ER signaling, we performed *in vitro* ERE-Tk-luciferase assays for three *ESR1* fusions (*ESR1-DAB2*, *ESR1-GYG1*, and *ESR1-SOX9*; Figure 3A). All three fusions have ligand-independent activity and two (*DAB2* and *SOX9*) are considered hyperactive, resulting in ER activity $\sim 40\times$ higher than basal wild-type ER activity. The *ESR1-GYG1* fusion results in a $\sim 2\text{--}3\times$ increase over basal ER activity but this is $\sim 20\times$ less than the other two fusions. In contrast, a truncation mutant lacking the LBD (ER Δ LBD) results in a slight decrease compared with basal wild-type ER activity, highlighting a role for the 3' fusion gene. *ESR1-DAB2* is also able to maintain the ligand-dependent pS118 post-translational modification (Figure 3B) and downstream E2 signaling is sustained in Pitt-1 LnM despite the patient receiving aromatase inhibitor therapy (Figure 3C). Together, these data establish that *ESR1* fusion proteins are sufficient for endocrine therapy resistance.

Development of copyshift method for rearrangement detection

To further explore this exon-targeted, DNA sequencing dataset for evidence of *ESR1* fusions, *copyshift*, a method to detect a shift

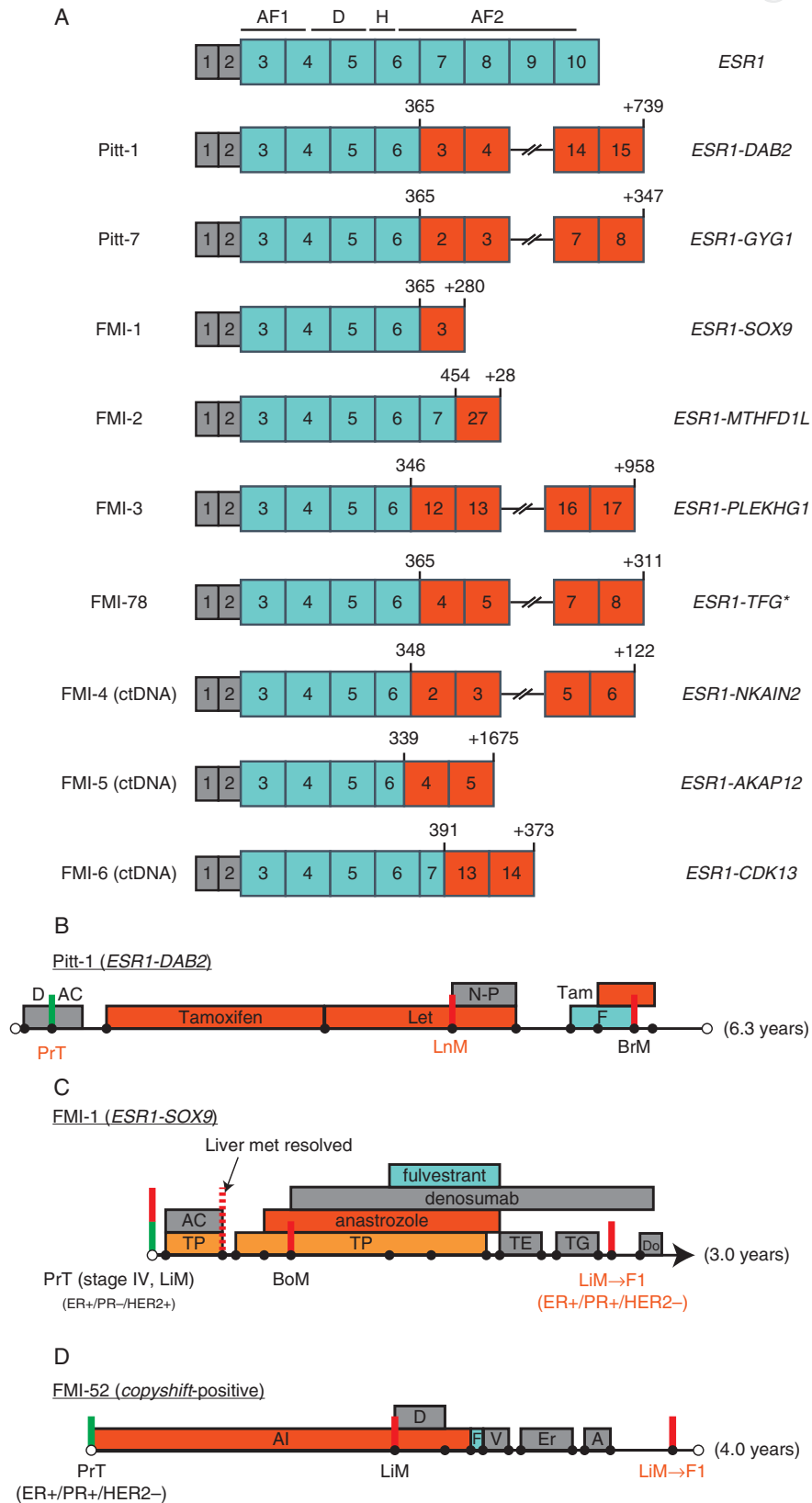


Figure 2. *ESR1* fusion proteins identified via direct discordant read evidence. Gene fusions have clustered junctions in *ESR1* between exons 6 and 7. The *ESR1* reference transcript is shown at the top with functional domains overlaid. AF1, ligand-independent activation domain; DBD, DNA-binding domain; H, hinge region; AF2, ligand-dependent activation domain. *FMI-78 was called initially as copyshift-positive only, with subsequent RNAseq identified the *ESR1-TFG* fusion. (B–D) Clinical history summaries for patients with *ESR1* fusion positive tumors. Timelines are drawn to scale. Green vertical lines represent the primary tumor surgery while red lines represent major metastatic events (see supplementary Table S9, available at *Annals of Oncology* online, for more details).

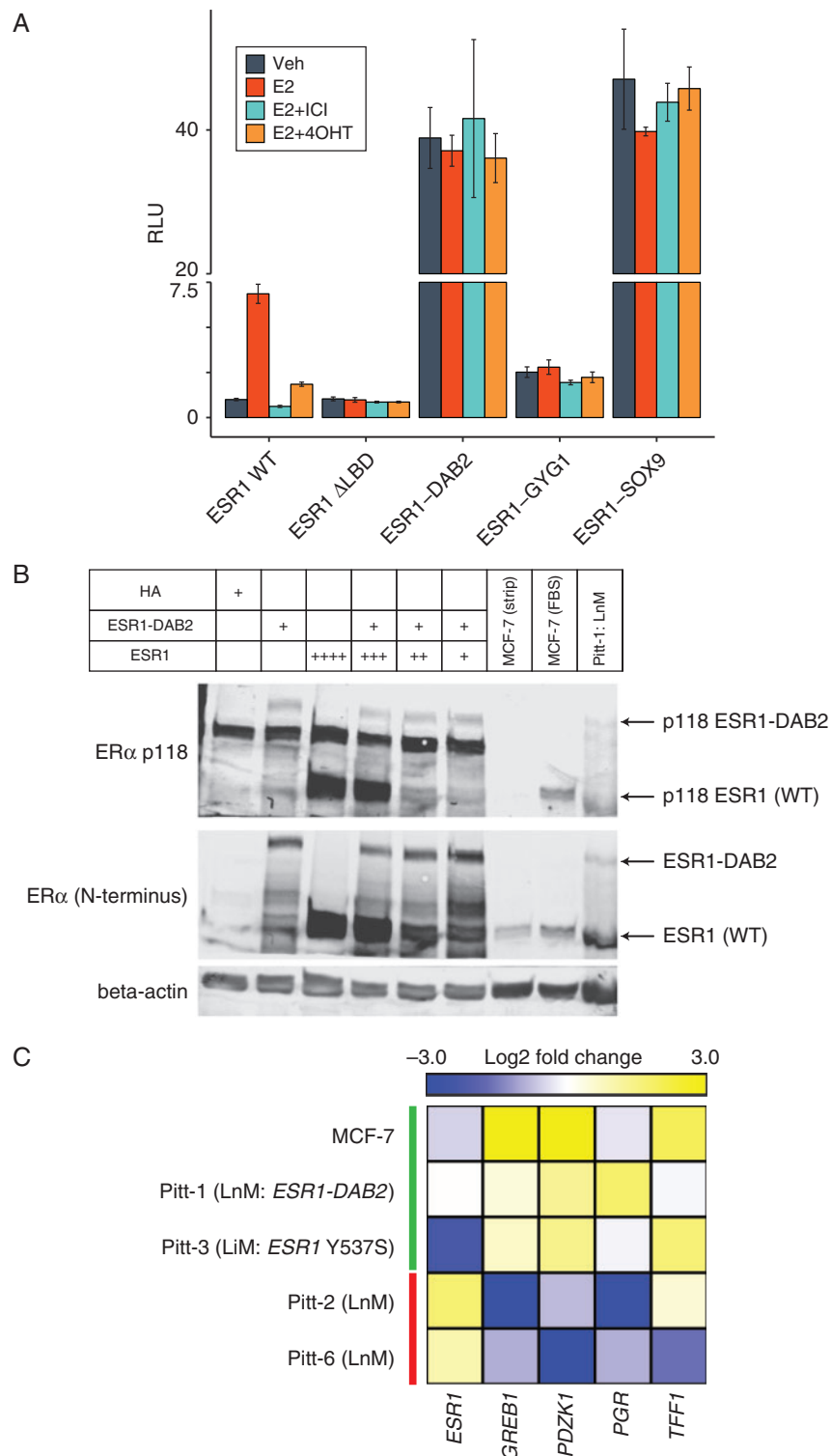


Figure 3. *ESR1* fusion proteins are constitutively hyperactive. (A) *ESR1* fusion activity determined via ERE-Tk-Luc assay in HEK293 cells. Data points represent mean firefly luciferase values normalized to renilla (transfection control) from three independent transfections in one experiment. Similar results were repeated in three independent experiments. Drug concentrations are as follows: E2 (estradiol: 0.1 nM), 4OHT (4-hydroxy-tamoxifen: 100 nM), ICI (ICI-182, 780: 100 nM). Error bars represent standard deviation. (B) HEK293 cells were transfected with *ESR1* and/or *ESR1-DAB2*. Immunoblot analysis was performed for both the WT and fusion forms of *ESR1* and for pS118. Untransfected MCF-7 cells in the absence (i.e. charcoal stripped) and presence of signaling (FBS) were included as a positive control of pS118. (C) Heatmap showing expression of classic estrogen responsive genes in metastatic tumor samples (normalized to paired primary tumor) and MCF-7 (-/+ estrogen as a positive control of E2 signaling) by NanoString analysis.

in copy number within genes, was developed as a surrogate RE call. This method is not intended to have the sensitivity to detect all fusions but is used as an initial screen for further characterization.

A cohort of 8754 lung adenocarcinomas (supplementary Figure S3, available at *Annals of Oncology* online) was used to benchmark *copyshift* against *ALK* rearrangements, whose detection by Foundation Medicine genomic profiling has been validated to >99% sensitivity and specificity [14]. In total, 53/301 *ALK* rearrangement-positive/*copyshift*-positive tumors and 6 rearrangement-negative/*copyshift*-positive tumors were identified. This indicates that *copyshift*-positive calls are highly likely to be true rearrangement calls (PPV > 89%), whereas *copyshift*-negative calls do not preclude the possibility of an RE due to copy-neutral rearrangements and the ultra-conservative nature of the method (FNR = 85%). Additionally, *ESR1 copyshift*-positive tumors are extremely rare (<0.01%) in lung adenocarcinomas (supplementary Table S6, available at *Annals of Oncology* online), indicating that *copyshift* events follow the expected disease distribution patterns of their corresponding fusions. Importantly, 2/3 *ESR1* fusions detected in the solid tumors evaluated by Foundation Medicine using discordant read mapping, plus the *ESR1-DAB2* fusion in Pitt-1 LnM, were *copyshift*-positive (Figure 4A). *Copyshift*-positivity was directly confirmed in one case (FMI-78) that was subsequently profiled via RNAseq and resulted in the identification of a previously unidentified *ESR1-TFG* fusion. Thus, *copyshift* can be used to detect rearrangements likely to lead to fusions with high specificity, but lower sensitivity.

Copyshift reveals recurrent *ESR1* rearrangements in endocrine therapy-resistant ER-positive metastatic breast cancer

Application of *copyshift* to all 9542 breast cancer samples identified 83 tumors likely to contain a rearrangement in *ESR1* (Figure 4B, supplementary Table S7, available at *Annals of Oncology* online). The vast majority of these samples were ER-positive (35/41 with available clinical ER IHC data; $P < 0.001$, by chi-square). *Copyshift*-positive samples are also highly enriched in metastatic disease (odds ratio = 3.59, $P < 0.001$ by chi-square). Co-mutation analysis revealed that *copyshift*-positive samples significantly co-occur with missense alterations in *ESR1* (odds ratio = 4.94, $P < 10^{-8}$). This suggests polyclonal endocrine therapy resistance similar to that previously reported for *ESR1* missense alterations [7, 19]. In support of this, all three ctDNA samples with *ESR1* fusion proteins contain *ESR1* missense alterations, with two containing three separate mutations in *trans*. Other genes with significantly co-occurring alterations with *copyshift*-positivity include: *ZNF703*, *GNAS*, *GLI1*, *FGFR1*, *VHL*, and *CCND1* (supplementary Table S8, available at *Annals of Oncology* online), some of which have been previously implicated in endocrine therapy resistance [12, 20].

Discussion

Our data establish *ESR1* fusion proteins as recurrent, albeit rare, events, enriched in metastatic ER-positive breast cancer and likely contribute to endocrine therapy resistance. We identify nine novel *ESR1* fusion proteins, all with junctions between *ESR1* exon

6 and 7 and direct evidence from DNA and/or RNA sequencing. The diverse 3' fusion partner genes and wide range of contributed amino acids (range: 28–1675) suggest that many possible 3' partners can produce ligand-independent *ESR1* fusions. These results establish that ligand independence can be established with minimal novel function from the 3' fusion partner but the overall activity is ultimately dependent on the characteristics of each fusion.

Further, identification of shifts in copy number at or near exon 6 identified 83 tumors from 80 patients likely to contain an RE in this region, including 2 tumors with both direct (read-level) and indirect (*copyshift*) lines of evidence and another tumor with indirect evidence (*copyshift*) and direct confirmation of an *ESR1* fusion transcript via RNAseq. The clustering of these events around *ESR1* exon 6, the strong enrichment in ER-positive metastatic disease, and functional data supporting ligand-independent activation indicate that *ESR1* fusion proteins drive resistance to ER-targeted therapies in a subset of patients with advanced breast cancer.

The use of multiple methods employed to detect these *ESR1* RE events imparts varying levels of confidence on the likelihood that each result in a functional fusion protein product. This is important to keep in mind as many predicted rearrangement events are not expressed or translated. For example, *ESR1-DAB2* was detected in tumor-derived DNA, RNA, and protein proving that this DNA RE produces an in-frame gene fusion and a translated protein product. *In vitro* functional studies further establish this fusion is constitutively hyperactive. *ESR1-GYG1* was detected in tumor-derived RNA and protein, establishing that this fusion transcript is expressed, in-frame, and produces a stable protein product. *ESR1-SOX9*, *ESR1-MTHFD1L*, *ESR1-PLEKHG1*, *ESR1-NKAIN2*, *ESR1-AKAP12*, and *ESR1-CDK13* were all detected with high confidence and base-pair level resolution only via DNA sequencing. Thus, it is possible these events do not lead to a fusion transcript despite the strong sequencing evidence and clustering of fusion junctions to *ESR1* exons 6–7. Finally, the 81 *copyshift*-only events, for which there is only evidence of an RE with no direct evidence of a gene fusion, are the least confident for the identification of fusion products. However, the enrichment of *ESR1 copyshift* calls in breast cancer (~10× enrichment in breast cancer over lung adenocarcinoma) indicates that these events are linked to the biology of this disease and benchmarking of *copyshift* on *ALK* REs in lung adenocarcinoma demonstrates the conservative nature of *copyshift*-positive calls. Further, within breast cancer, these events are strongly enriched in ER-positive metastatic disease and co-occur with *ESR1* missense alterations. The clinical history available for these patients also strongly supports their role in endocrine therapy resistance.

Our detection of copy number shifts within *ESR1* complements similar findings describing 'truncating amplifications' in endometrial cancer [21]. Of note, Holst et al. link one truncating amplification to a gene fusion. Although we did directly detect (via discordant read analysis) seven truncating REs that delete a portion of the LBD (defined as exons 7–10; see supplementary Table S7, available at *Annals of Oncology* online), none were *copyshift*-positive or were considered fusion candidates. Although not examined here, the frequency of *ESR1* truncating events and their potential role in endocrine therapy resistance warrants further study.

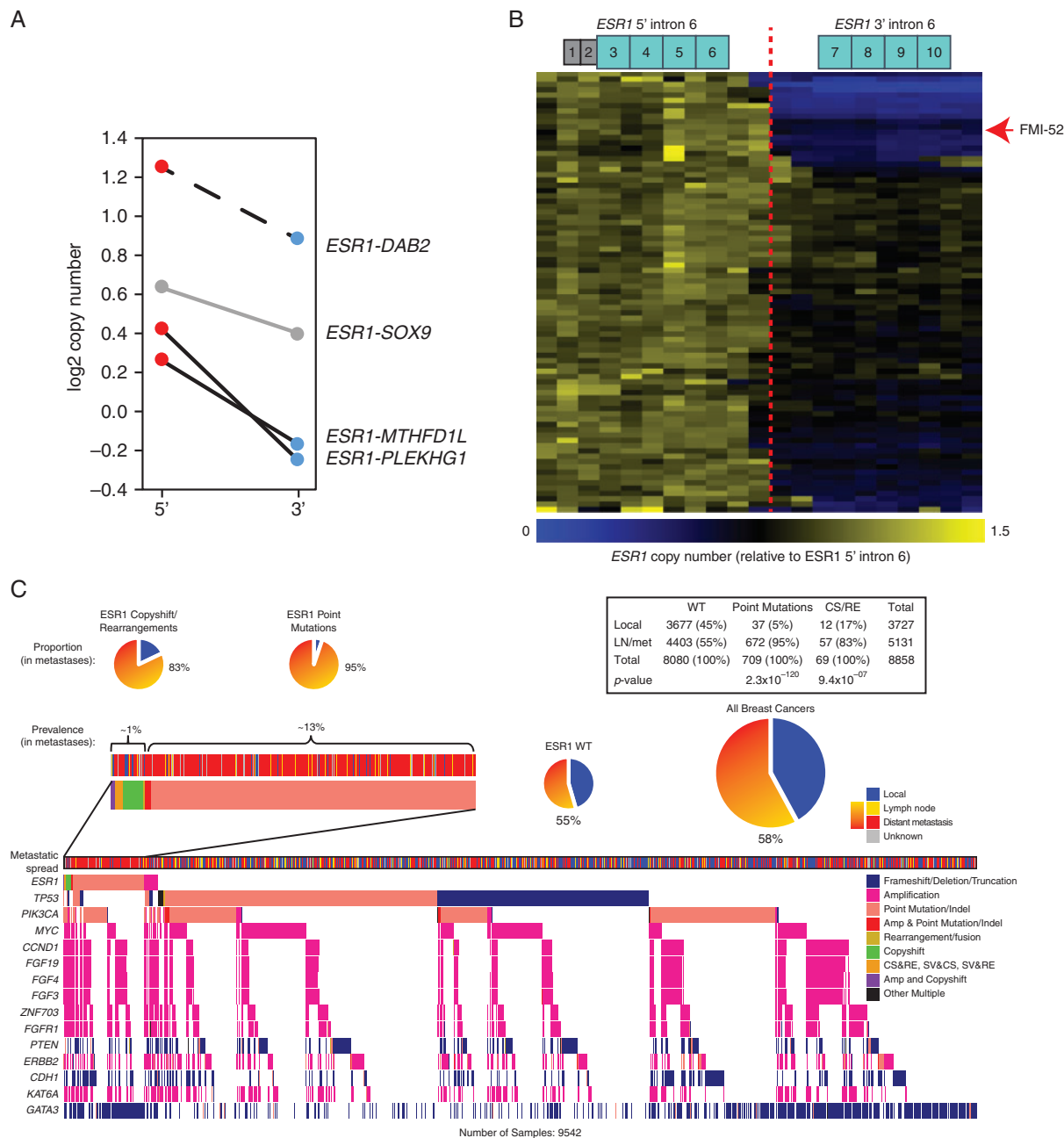


Figure 4. Recurrent *ESR1* copyshift at exon 6 is enriched in ER-positive metastatic breast cancer. (A) Samples containing *ESR1* fusion proteins are often positive for copyshift. Adapting the method to mate pair sequencing data also showed *ESR1-DAB2* is copyshift-positive (dashed line). (B) Heatmap showing the shift in copy number across *ESR1*. Of the 9542 breast cancer genomic profiles examined, the 83 copyshift positive are shown. FMI-52 is highlighted with the red arrowhead. (C) Tileplot illustrates the genomic context of *ESR1* fusions and copyshift positivity. *ESR1* alteration containing samples (point mutations, fusions, copyshift) are found predominantly in metastatic disease.

The majority of *ESR1* fusions were identified using a DNA sequencing strategy not explicitly designed to detect these events, making it difficult to establish the true frequency with which they occur. *Copyshift* provides some power to detect additional REs, although benchmarking suggests that it detects only about one-third of REs. Since the estimated false-negative rate is much higher than the estimated false positive rate (FNR = 85%, FPR < 0.1%), we consider our detection rate of *ESR1* fusion events of ~1% of metastatic breast cancer to represent a lower-

limit. These data strongly advocate for additional studies in recurrent ER-positive breast cancer to refine this estimate.

Although *ESR1* fusions appear to be relatively rare, we speculate that they may be increasing in frequency. We postulate that as more aggressive ER-targeted endocrine therapies are employed for patients with *ESR1* LBD missense tumors, *ESR1* fusions will represent a mechanism of secondary resistance. This is supported by the following observations. First, *ESR1* fusions detected with direct read-level evidence are more frequent in metastatic

patients tested via a recently launched ctDNA assay (3/254; 1.2%) compared with metastatic solid tumors profiled over the previous 4–5 years (3/5131; 0.058%). Second, *ESR1* missense alterations are the most common co-occurring alterations in *ESR1* fusion or *copyshift*-positive samples. In fact, each of the three fusions identified via the ctDNA assay contained at least one known *ESR1* LBD mutation and two contained three LBD mutations in *trans*. Third, many of the patients with *ESR1* fusion-positive tumors received multiple lines of endocrine therapy, including relatively aggressive options like GnRH agonists, fulvestrant, and multiple lines of aromatase inhibitor therapies. Conclusive evidence needs to establish that *ESR1* fusions can represent secondary resistance mechanisms to second and third line endocrine therapies, and remains to be gathered.

The clinical implications of *ESR1* fusions are profound. The *in vitro* evidence demonstrating constitutive, ligand-independent activity combined with the lack of the LBD suggest that the presence of an *ESR1* fusion is a contraindication for continued ER-targeted endocrine therapies. This may help to redirect clinical decisions to potentially more efficacious therapies. It also highlights the dependency of our current endocrine therapies on the ER LBD. The development of therapies targeting the N-terminus of ER or other downstream signalling molecules, such as CDK4/6, are therapeutic strategies to be explored for *ESR1* fusion-positive tumors. More broadly, this study highlights the importance of REs as a class of genomic alterations in advanced breast cancer and demonstrates a contribution to therapy resistance through the generation of *ESR1* fusion proteins.

Acknowledgements

We thank D. Boone and M. Sikora for critical discussions and reading of the manuscript. We thank D. Peters, A. Rajkovic, P. Shaw, and K. Bruce for access to sequencing equipment, F. Han for performing immunoblots, and C. Andersen for providing the Nanostring codeset. The authors acknowledge support from the UPMC Hillman Cancer Center, UPMC, and by the University of Pittsburgh Center for Simulation and Modeling through the high-performance computing resources provided. The authors acknowledge support of the Health Sciences Tissue Bank and the rapid autopsy team especially Christina Kline, Lindsay Mock, Michelle Bisceglia, Louise Mazur, Sue Kelly, Rajiv Dhir, Ron Johnson, and many other clinicians and staff, as well as patients at UPMC for making the study possible. Sequence data from Pitt samples will be made available upon request and under regulatory compliance. Samples from Foundation Medicine are part of routine clinical testing and raw data are not available for public release.

Funding

The study was funded in part by a CDMRP Breast Cancer Postdoctoral Fellowship to RJH (W81XWH-11-1-0582), the Fashion Footwear of New York (FFANY), and Breast Cancer Research Fund (AVL, SO, BP, and NED). This project used UPMC Hillman Cancer Center Cancer Genomics and Tissue and Research Pathology Services, supported by award

P30CA047904 from NIH, utilized sequencing services performed in the Genomics Research Core at the University of Pittsburgh, and utilized common equipment supported by NIH UL1-RR024153 and UL1-TR000005 grants to the University of Pittsburgh's Clinical & Translational Science Institute. AVL is a recipient of a Scientific Advisory Council award SAC150021 from Susan G. Komen for the Cure and is a Hillman Foundation Fellow. NP was supported by a training grant from the NIH/NIGMS (2T32GM008424-21) and an individual fellowship from the NIH/NCI (5F30CA203095). AN was supported by a training grant from NIH (T32GM008424). BP was supported from Susan G. Komen for the Cure and the Commonwealth Foundation.

Disclosure

RJH, SET, JHC, CAP, PVB, SM, MR, LMG, MEG, JS, SMA, JR, GMF, PJS, and JC receive salary and have ownership interest (including patents) in Foundation Medicine. All remaining authors have declared no conflicts of interest.

References

1. Early Breast Cancer Trialists' Collaborative Group (EBCTCG). Effects of chemotherapy and hormonal therapy for early breast cancer on recurrence and 15-year survival: an overview of the randomised trials. *Lancet* 2005; 365(9472): 1687–1717.
2. Strasser-Weippl K, Goss PE. Advances in adjuvant hormonal therapy for postmenopausal women. *J Clin Oncol* 2005; 23(8): 1751–1759.
3. Osborne CK, Schiff R. Mechanisms of endocrine resistance in breast cancer. *Annu Rev Med* 2011; 62(1): 233–247.
4. Toy W, Shen Y, Won H et al. *ESR1* ligand-binding domain mutations in hormone-resistant breast cancer. *Nat Genet* 2013; 45(12): 1439–1445.
5. Jeselsohn R, Yelensky R, Buchwalter G et al. Emergence of constitutively active estrogen receptor- α mutations in pretreated advanced estrogen receptor-positive breast cancer. *Clin Cancer Res* 2014; 20(7): 1757–1767.
6. Robinson DR, Wu Y-M, Vats P et al. Activating *ESR1* mutations in hormone-resistant metastatic breast cancer. *Nat Genet* 2013; 45(12): 1446–1451.
7. Wang P, Bahreini A, Gyanchandani R et al. Sensitive detection of mono- and polyclonal *ESR1* mutations in primary tumors, metastatic lesions and cell free DNA of breast cancer patients. *Clin Cancer Res* 2015; 22(5): 1130–1137.
8. Tomlins SA, Rhodes DR, Perner S et al. Recurrent fusion of *TMPRSS2* and *ETS* transcription factor genes in prostate cancer. *Science* 2005; 310(5748): 644–648.
9. Choi YL, Soda M, Yamashita Y et al. *EML4-ALK* mutations in lung cancer that confer resistance to *ALK* inhibitors. *N Engl J Med* 2010; 363(18): 1734–1739.
10. Hartmaier RJ, Albacker L, Chmielecki J et al. High-throughput genomic profiling of adult solid tumors reveals novel insights into cancer pathogenesis. *Cancer Res* 2017; 77(9): 2464–2475.
11. Veeraraghavan J, Tan Y, Cao X-X et al. Recurrent *ESR1-CCDC170* rearrangements in an aggressive subset of oestrogen receptor-positive breast cancers. *Nat Commun* 2014; 5: 4577.
12. Giltane JM, Hutchinson KE, Stricker TP et al. Genomic profiling of ER + breast cancers after short-term estrogen suppression reveals alterations associated with endocrine resistance. *Sci Transl Med* 2017; 9(402): eaai7993.
13. Li S, Shen D, Shao J et al. Endocrine-therapy-resistant *ESR1* variants revealed by genomic characterization of breast-cancer-derived xenografts. *Cell Rep* 2013; 4(6): 1116–1130.

14. Frampton GM, Fichtenholtz A, Otto GA et al. Development and validation of a clinical cancer genomic profiling test based on massively parallel DNA sequencing. *Nat Biotechnol* 2013; 31(11): 1023–1031.
15. Chung JH, Pavlick D, Hartmaier R et al. Hybrid capture-based genomic profiling of circulating tumor DNA from patients with estrogen receptor-positive metastatic breast cancer. *Ann Oncol* 2017; 28(11): 2866–2873.
16. Stephens PJ, Greenman CD, Fu B et al. Massive genomic rearrangement acquired in a single catastrophic event during cancer development. *Cell* 2011; 144(1): 27–40.
17. Stephens P, McBride D, Lin M-L et al. Complex landscapes of somatic rearrangement in human breast cancer genomes. *Nature* 2009; 462(7276): 1005–1010.
18. Shugay M, Ortiz de Mendibil I, Vizmanos JL, Novo FJ. Oncofuse: a computational framework for the prediction of the oncogenic potential of gene fusions. *Bioinformatics* 2013; 29(20): 2539–2546.
19. Schiavon G, Hrebien S, Garcia-Murillas I et al. Analysis of ESR1 mutation in circulating tumor DNA demonstrates evolution during therapy for metastatic breast cancer. *Sci Transl Med* 2015; 7(313): 313ra182–313ra182.
20. Turner N, Pearson A, Sharpe R et al. FGFR1 amplification drives endocrine therapy resistance and is a therapeutic target in breast cancer. *Cancer Res* 2010; 70(5): 2085–2094.
21. Holst F, Hoivik EA, Gibson WJ et al. Recurrent hormone-binding domain truncated ESR1 amplifications in primary endometrial cancers suggest their implication in hormone independent growth. *Sci Rep* 2016; 6(1): 25521.