



Clinical recommendations for high altitude exposure of individuals with pre-existing cardiovascular conditions

A joint statement by the European Society of Cardiology, the Council on Hypertension of the European Society of Cardiology, the European Society of Hypertension, the International Society of Mountain Medicine, the Italian Society of Hypertension and the Italian Society of Mountain Medicine

Gianfranco Parati^{1,2*}, Piergiuseppe Agostoni^{3,4}, Buddha Basnyat⁵, Grzegorz Bilo^{1,2}, Hermann Brugger^{6,7}, Antonio Coca⁸, Luigi Festi^{9,10}, Guido Giardini¹¹, Alessandra Lironcurti¹, Andrew M. Luks¹², Marco Maggiorini¹³, Pietro A. Modesti¹⁴, Erik R. Swenson^{12,15}, Bryan Williams¹⁶, Peter Bärttsch¹⁷, and Camilla Torlasco¹

¹Department of Cardiovascular, Neural and Metabolic Sciences, Istituto Auxologico Italiano, S. Luca Hospital, Piazzale Brescia, 20, 20149 Milan, Italy; ²Department of Medicine and Surgery, University of Milano-Bicocca, Piazza dell'Ateneo Nuovo, 1, 20126 Milan, Italy; ³Department of Cardiology, Heart Failure Unit, Centro Cardiologico Monzino, via Parea 4, 20138 Milan, Italy; ⁴Department of Clinical Sciences and Community Health, Cardiovascular Section, University of Milano, via Festa del Perdono 7, 20122 Milan, Italy; ⁵Nuffield Department of Clinical Medicine, Oxford University Clinical Research Unit-Nepal and Centre for Tropical Medicine and Global Health, University of Oxford, Old Road campus, Roosevelt Drive, Headington, Oxford OX3 7FZ, UK; ⁶Institute of Mountain Emergency Medicine at the EURAC Research, viale Druso 1, 39100 Bolzano, Italy; ⁷Medical University, Christoph-Probst-Platz 1, Innrain 52 A - 6020 Innsbruck, Austria; ⁸Hypertension and Vascular Risk Unit, Department of Internal Medicine, Hospital Clinic (IDIBAPS), University of Barcelona, Villarroel 170, 08036 Barcelona, Spain; ⁹Surgery Department, Ospedale di Circolo Fondazione Macchi, viale Luigi Borri, 57, 21100 Varese, Italy; ¹⁰University of Insubria, via Ravasi 2, 21100 Varese, Italy; ¹¹Department of Neurology, Neurophysiopathology Unit, Valle d'Aosta Regional Hospital, via Ginevra, 3, 11100 Aosta, Italy; ¹²Division of Pulmonary, Critical Care and Sleep Medicine, Department of Medicine, University of Washington, Seattle, 98195 WA, USA; ¹³Medical Intensive Care Unit, University Hospital, Rämistrasse 100, 8091 Zürich, Switzerland; ¹⁴Department of Experimental and Clinical Medicine, University of Florence, Largo Brambilla, 3, 50134 Florence, Florence, Italy; ¹⁵Pulmonary, Critical Care and Sleep Medicine, VA Puget Sound Health Care System, 1660 S Columbian Way, Seattle, 98108 WA, USA; ¹⁶University College London (UCL) and NIHR UCL Hospitals Biomedical Research Centre, NHS Foundation Trust, University College, Gower St, Bloomsbury, London WC1E 6BT, UK; and ¹⁷Department of Internal Medicine, University Hospital, Im Neuenheimer Feld 410, 69120 Heidelberg, Germany

Received 23 April 2017; revised 24 August 2017; editorial decision 16 November 2017; accepted 15 December 2017; online publish-ahead-of-print 11 January 2018

Introduction

The travelling options currently available allow an increasingly large number of individuals, including sedentary people, the elderly and diseased patients, to reach high altitude (HA) locations, defined as locations higher than 2500 m above sea level (asl),¹⁵ i.e. the altitude above which many of the physiological responses that represent challenges for the human body start developing. Physiological acclimatization mechanisms impose an increased workload on the cardiovascular system, but the actual risk of adverse cardiovascular events associated with HA exposure is still a debated issue.^{1–4}

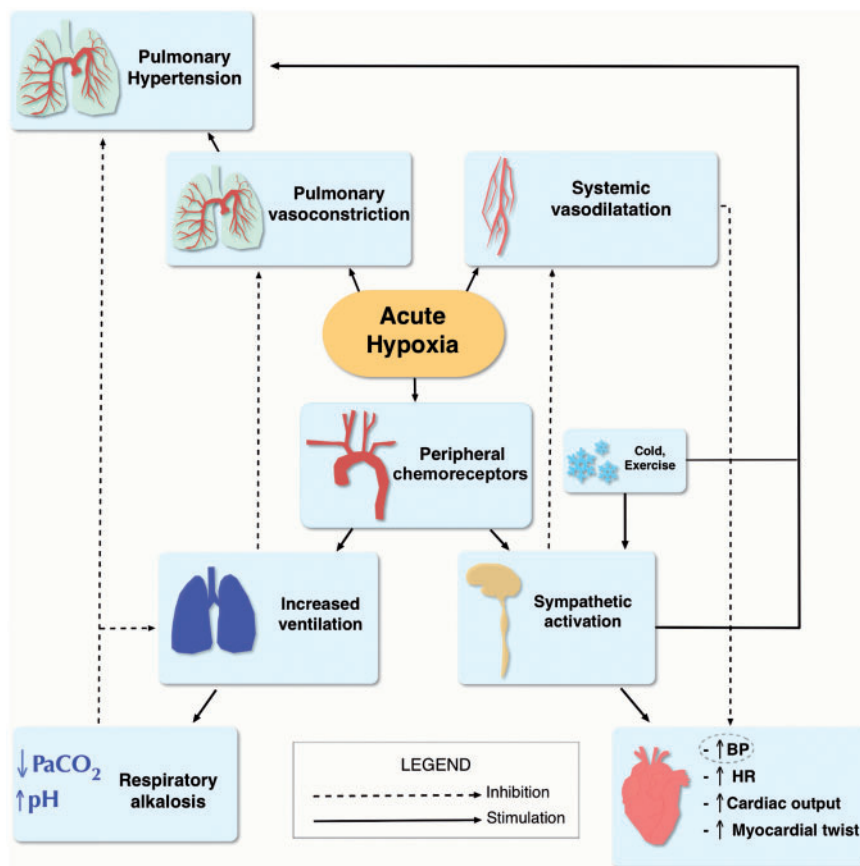
The aim of this article is to review the available evidence on the effects of HA in cardiovascular patients and to address their risk of developing clinically relevant events. This was done through multiple Medline searches on the PubMed database, with the main aim of promoting a generally safe access to mountains. Searched terms included a combination of either 'high altitude' or 'hypobaric hypoxia' plus each of the following: 'physiology', 'maladaptation', 'cardiovascular response', 'systemic hypertension', 'pulmonary hypertension', 'ischaemic heart disease', 'cardiac revascularisation', 'heart failure', 'congenital heart disease', 'arrhythmias', 'implantable cardiac devices', 'stroke', 'cerebral haemorrhage', 'exercise', 'sleep apnea'. Compared with a

The opinions expressed in this article are not necessarily those of the Editors of the *European Heart Journal* or of the European Society of Cardiology.

* Corresponding author. Tel: +39 02619112949, Fax: +39 02619112956, Email: gianfranco.parati@unimib.it

© The Author 2018. Published by Oxford University Press on behalf of the European Society of Cardiology.

This is an Open Access article distributed under the terms of the Creative Commons Attribution Non-Commercial License (<http://creativecommons.org/licenses/by-nc/4.0/>), which permits non-commercial re-use, distribution, and reproduction in any medium, provided the original work is properly cited. For commercial re-use, please contact journals.permissions@oup.com



Take home figure Adapted from Bärtsch and Gibbs² Physiological response to hypoxia. Life-sustaining oxygen delivery, in spite of a reduction in the partial pressure of inhaled oxygen between 25% and 60% (respectively at 2500 m and 8000 m), is ensured by an increase in pulmonary ventilation, an increase in cardiac output by increasing heart rate, changes in vascular tone, as well as an increase in haemoglobin concentration. BP, blood pressure; HR, heart rate; PaCO_2 , partial pressure of arterial carbon dioxide.

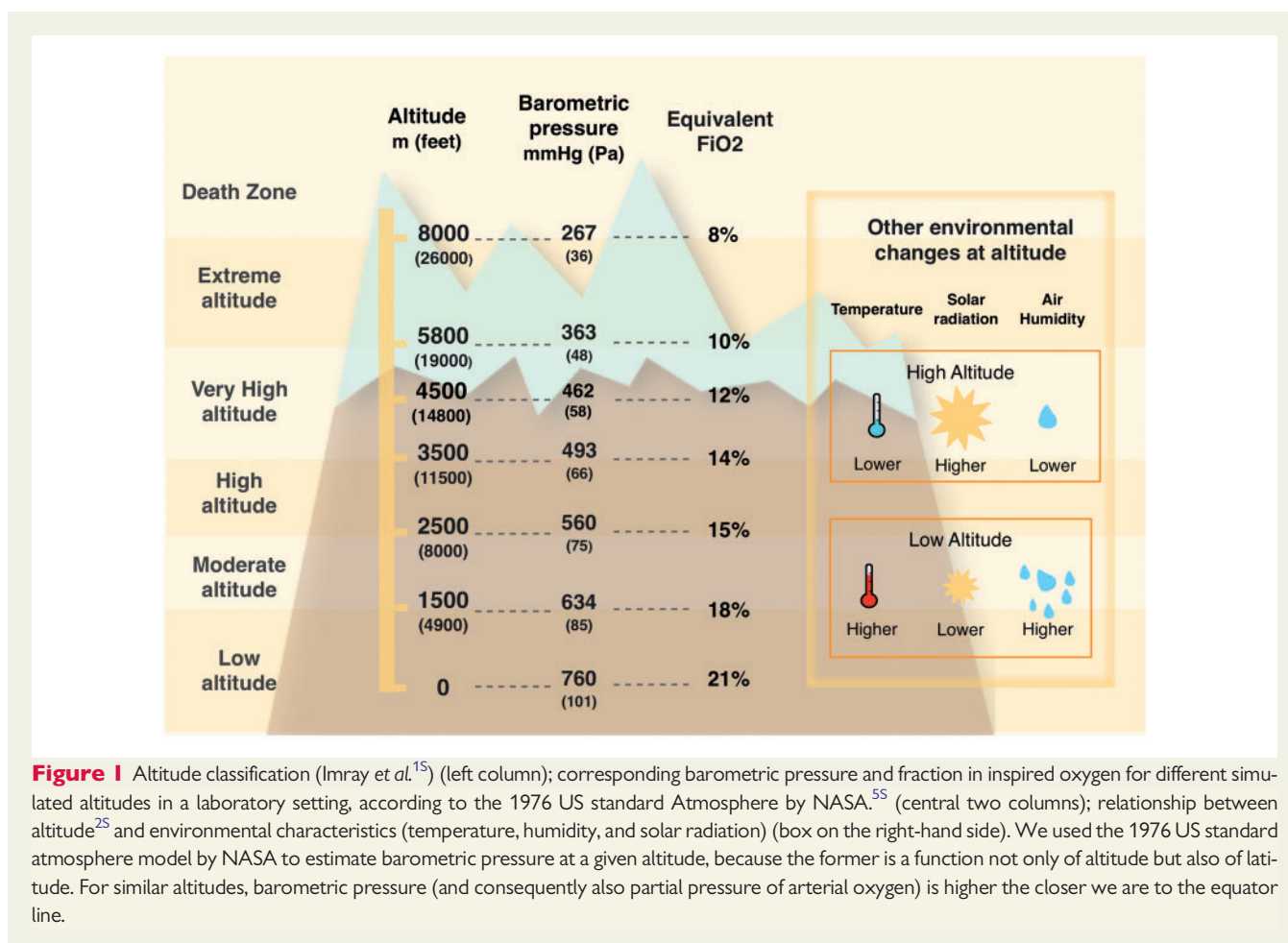
previous review article on this topic,²⁵ we now include the most recent data on hypoxia-induced changes in left ventricular (LV) systolic and diastolic function, lung function and ventilation control, blood coagulation, and on the effects of pharmacological interventions. We also offer an update on the clinical and pathophysiological findings related to the exposure to altitude of patients with pre-existing cardiovascular conditions (ischaemic heart disease, heart failure, and arterial and pulmonary hypertension).

Physics and cardiovascular physiology at high altitude

With increasing altitude, a progressive reduction in barometric pressure, air temperature and air humidity can be observed (Figure 1).¹⁵ For the purpose of this article, we refer to Imray *et al.*'s¹⁵ classification of altitude ranges.

Barometric pressure directly determines the inspired oxygen (O_2) partial pressure and, in combination with alveolar ventilation, sets the alveolar O_2 partial pressure. Its reduction leads to a condition known as 'hypobaric hypoxia'. In practice, at sea level, O_2

constitutes 20.94% of total gas molecules in inspired air, which with a normal rate of alveolar ventilation leads to an alveolar partial O_2 pressure of roughly 100 mmHg for a barometric pressure of roughly 760 mmHg.⁵⁵ When breathing at 3000 m altitude asl, the same percentage of O_2 in the inspired air, combined with a lower barometric pressure and higher rate of ventilation, results in an alveolar partial O_2 pressure of roughly 67 mmHg, corresponding to what would occur breathing a hypoxic air mixture (fraction of inspired O_2 0.14) at sea level (Figure 1).⁵⁵ A series of physiological responses help to maintain adequate tissue O_2 delivery and supply at HA, through a process called 'acclimatization'. Its efficacy depends on the duration of individual's exposure to altitude, age, sea level partial pressure of oxygen in arterial blood (PaO_2) and minute ventilation.^{2,3,45,55} These crucial processes include increase in ventilation, cardiac output, red cell mass and blood O_2 carrying capacity, and other metabolic modifications at the microvascular and cellular levels (Take home figure). Some of these mechanisms are activated almost immediately, whereas others need hours to days to attain full expression.^{2,4-6} A more extensive description of the effects of HA exposure on cardiovascular physiology is provided in the seminal papers by Bärtsch *et al.*²



Systemic blood pressure and heart rate

Acute exposure to hypoxia produces endothelium-dependent and endothelium-independent systemic vasodilation,^{65–95} which may initially induce some degree of blood pressure (BP) reduction. After a few hours, this is counter-balanced, however, by a generalized altitude-dependent increase in sympathetically mediated vasoconstriction, caused primarily by arterial hypoxaemia through afferent signalling to the cardiovascular control regions of the mid-brain via the arterial peripheral chemoreceptors located in the carotid bodies.^{5,6,105} As a result, a significant and persistent arterial BP increase occurs shortly after the arrival at HA, proportional to the altitude reached and more evident at night.⁷ This leads to a reduced degree of the physiological blood pressure fall during sleep,⁸ which persists at least over the first 7 days of altitude exposure.⁹ This is accompanied by an increase in heart rate (HR) both at rest and during exercise,^{10,11,115} although maximal HR achieved during exercise at HA is lower compared to sea level (see [Supplementary material online, Table S1](#)).^{2,11–14}

Ventilation

With acute exposure to altitude, the decrease in PaO₂ stimulates peripheral chemoreceptors in the carotid bodies leading to sympathetic activation and to an increase in minute ventilation.^{2,14} Moreover, mild interstitial lung fluid accumulation¹⁵ can occur in

physically active persons and decreases alveolar diffusing capacity.¹⁴ Hypoxia-induced hyperventilation leads to hypocapnia and respiratory alkalosis, which blunts the initial full hypoxic ventilatory response. The combination of hyperventilation and resulting hypocapnia, with increased peripheral chemosensitivity and abnormal loop gain in chemoreflex-induced respiratory regulation⁷⁵ may lead to the appearance of nocturnal periodic breathing (PB). This is an abnormal ventilatory pattern, characterized by periods of central apnoea or hypopnoea alternating with periods of hyperventilation, mainly occurring during sleep.^{10,16,17,135,18}

With exposure over days to weeks, the sensitivity of the peripheral chemoreceptors to hypoxia increases, resulting in a further increase in sympathetic activity and enhancement of ventilation, despite the progressive increase in arterial blood O₂ content and lower partial pressure of arterial carbon dioxide (PaCO₂) ('ventilatory acclimatization', see [Supplementary material online, Table S1](#)).^{19,145}

Pulmonary arterial pressure

Alveolar hypoxia and arterial hypoxaemia (to a lesser degree) induce vasoconstriction in the pulmonary circulation, either directly and through sympathetic activation,^{14,18,19,145,155} resulting in increased pulmonary vascular resistance and pulmonary artery pressure (hypoxic pulmonary vasoconstriction).¹⁴⁵ Hypoxic pulmonary vasoconstriction is a protective mechanism during regional alveolar hypoxia (eg.

Table 1 Recommendations for heart failure patients going to high altitude

HF severity level	Recommendations	Class of evidence	Level of evidence	References
All HF patients	Carefully evaluate HF co-morbidities (e.g. pulmonary hypertension, anaemia, sleep apnoea)	I	C	
	Carefully evaluate HF drugs (in particular diuretics, potassium supplementation, and β blockers). Whenever possible, β 1 selective should be preferred to non-selective beta-blockers	I	B	10,13,205
	Slow ascent is recommended. Although we do not have precise data on advisable ascent rate, it is prudent not to exceed that recommended for healthy travellers (300–500 m/day when above 2500 m)	I	C	
Stable NYHA I-II patients	May safely reach high altitude up to 3500 m	Ila	C	25
	Once at altitude, not heavier than moderate physical activity is recommended	Ila	C	25
Stable NYHA III patients	May safely reach high altitude up to 3000 m, if needed	Ila	C	24
	Once at altitude, not heavier than light physical activity is recommended	Ila	C	23,24
Unstable/NYHA IV patients	Avoid high altitude exposure	I	C	

The strength of these recommendations is to be weighted in the light of the limited evidence available. HF, heart failure; NYHA, New York Heart Association.

pneumonia) to shift blood flow to better ventilated lung regions, but at HA, where the hypoxic stimulus is ubiquitous throughout the lungs, global alveolar hypoxia leads to general pulmonary hypertension with the risk of pulmonary oedema or right ventricular failure in the extreme cases (see [Supplementary material online, Table S1](#)).¹⁶⁵ We found only one study investigating pre-capillary pulmonary hypertension.¹⁷⁵ Although the sample size was small ($n = 14$) and the exposure to simulated HA was short (at rest and after 20 min of mild exertion), non-invasive measures of the right heart function demonstrated a predictable rise in pulmonary arterial systolic pressure, not associated with a deterioration in the right heart function.

Left ventricular function

The left ventricle undergoes significant changes when exposed to HA.^{11,20,21,175} In particular, a reduction in both diastolic and systolic LV volumes and geometrical alterations (increase in the sphericity index) occur, the diastolic function worsens and the LV contractility and LV apex twist increase, the last change being similar to what is observed in cases of subendocardial LV fibre dysfunction.²⁰ Moreover, after 2 weeks of exposure to very HA, LV mass decreases disproportionately when compared with the concomitant reduction in total body weight (11% vs. 3% reduction for LV mass vs. body mass, adjusted for body surface area, $P < 0.05$).²¹ Lung impairment via cardiopulmonary interaction (with arterial hypoxaemia made worse due to mild interstitial oedema), especially during the first 2 weeks, and the increased LV inotropic stimulation by an increased sympathetic activity are considered to play a role in the development of these changes, but probably they cannot completely explain the extent of the observed findings.

Recent evidence suggests that hypoxia itself can be the basis for LV alterations.³¹ ³¹P magnetic resonance spectroscopy performed before and after ascent to Mt. Everest in healthy individuals revealed a decrease in the cardiac creatine phosphate/adenosine triphosphate (PCr/ATP) ratio by 18% ($P < 0.01$), similarly to what is observed in patients with diseases associated with chronic hypoxia.²¹ All these reductions returned to pre-trek levels 6 months after return to the sea level. The authors concluded that a decrease in energy reserve may be a 'universal response to periods of sustained low O₂ availability, underlying hypoxia-induced cardiac dysfunction both in the healthy human heart and in patients with cardiopulmonary diseases'.

Other effects

Mild dehydration and a hypoxic-mediated diuresis were found to lead to an acute increase in haematocrit and haemoglobin concentration in the first several days at HA,¹⁸⁵ after which the renal production of erythropoietin stimulates new red blood cell production to increase red cell mass, with a further rise in haemoglobin concentration. In the acute exposure phase, this can be associated with increased blood coagulability.²² Nevertheless, an increased thrombotic risk at HA has never been convincingly demonstrated, and the limited available data are conflicting with respect to a hypothetical prothrombotic state.^{22,23}

Heart failure

Heart failure (HF) is often associated with co-morbidities, such as pulmonary hypertension, chronic obstructive pulmonary disease, chronic kidney disease, cardiac ischaemia, anaemia, and thrombophilia. This condition is also characterized by an increased chemosensitivity.²⁰⁵ All these conditions are likely to make HF patients more vulnerable

to the HA environment. In spite of this, brief simulated HA exposure was found to be safe for HF patients,²⁴ even when performing mild physical exercise. Agostoni et al.²⁴ evaluated 38 patients with severe stable HF [New York Heart Association (NYHA) Class III–IV] undergoing cardiopulmonary exercise testing with a progressive reduction in inspired O₂ from 21% (sea level) to 18%, 16%, and 14% (the last simulating 3000 m altitude). No episodes of angina, arrhythmias, or electrocardiographic (ECG) evidence of ischaemia occurred at any simulated altitude. The reduction in maximum work rate achieved at simulated altitude was progressively greater the more severe the exercise limitation at sea level. Finally, patients who showed the largest increase in the lung diffusion capacity for CO (D_LCO) at sea level during moderate exercise were those who showed the lowest exercise capacity reduction at simulated altitude,²⁰⁵ linking HA exercise performance to gas exchange adaptability.

Schmid et al.²⁵ evaluated stable HF patients (NYHA Class II) exercising during a short exposure to HA (3454 m, Jungfrauoch, Switzerland) and at sea level. During HA exercise, mean peak VO₂ decreased by 22%, without causing arrhythmias or altering echocardiographic variables, with the exception of an increase in pulmonary artery systolic pressure (PAPs). Drug therapy of HF may also interfere with HA adaptation mechanisms. Critical HF drugs such as beta-blockers and angiotensin-converting enzyme (ACE) inhibitors act on the chemoreceptors and on haemodynamic responses through adrenergic receptors, which are also involved in the alveolar–capillary gas diffusion control (β₂-receptors). Despite their importance in the care of patients with HF which is incontrovertible at sea level, ACE inhibitors and angiotensin receptor blockers (ARBs) do blunt the kidney's ability to produce erythropoietin and could limit the compensatory rise in haematocrit and blood O₂-carrying capacity that is important at HA.^{215,225} HIGHCARE (HIGH altitude Cardiovascular REsearch) investigators reported that healthy subjects receiving the non-cardioselective β₂ antagonist carvedilol reached lower peak exercise ventilation and lower VO₂ peak at HA than those receiving the selective β₁ receptor blocker nebivolol.¹³ Carvedilol also reduced hyperventilation during exercise, possibly by reducing peripheral chemoreceptor sensitivity. This effect may be favourable in normoxia, because the fall in arterial O₂ saturation is quite small at sea level, but can be much greater and unfavourable at HA.^{205,235} Moreover, administration of diuretics should be based on the balanced evaluation of signs of early dehydration or fluid gain. Among the diuretics, acetazolamide, a carbonic anhydrase inhibitor with mild diuretic effect, which is frequently used for mountain sickness prophylaxis and treatment, should be specifically considered.²⁴⁵ It should be emphasized that the concomitant administration of acetazolamide and other diuretics may increase the risk of dehydration and electrolyte imbalances at HA and should thus be carefully evaluated.

A final issue is related to periodic breathing. It can be present in HF patients at sea level, both during sleep and exercise, but likely it will worsen at HA.^{125,255,26} Whether it should be suppressed with acetazolamide remains an issue yet to be clarified.

Very little is known about the effects of HA in patients who underwent heart transplant. Living at moderate altitude seems not to be harmful, but no data are available on the effects of acute HA exposure.²⁶⁵ Recommendations for HF patients going to be exposed to HA are summarized in Table 1.

Ischaemic heart disease

It has been suggested that living permanently at moderate altitude might be beneficial, reducing CV mortality.²⁷⁵ Acute exposure to HA, on the other hand, may represent a more challenging condition for the cardiovascular system. Given that total O₂ demand is constant for a given workload and that myocardial O₂ extraction is already very high at sea level, with acute HA exposure cardiac output must increase to maintain O₂ delivery despite the reduced blood arterial O₂ content.

In healthy subjects, epicardial coronary blood flow increases due to vasodilation during acute HA exposure and thus there may not be any significant impairment during exercise of coronary flow reserve, at least up to 4500 m.²⁷ The actual risk of cardiac ischaemia associated with HA is indeed unclear. On the one hand, stress testing performed in healthy subjects above a simulated altitude of 8000 m²⁷⁵ did not induce ECG alterations; on the other hand, changes in arterial wall properties may reduce coronary O₂ supply in diastole at HA, with possible clinical implications in subjects with silent coronary plaques. Evidence in this regard has been obtained through calculation of the subendocardial viability ratio (SEVR), defined as the ratio between diastolic pressure–time index (DPTI, an estimate of myocardial O₂ supply based on both coronary artery driving pressure in diastole and diastolic time) and systolic pressure–time index (SPTI, an estimate of myocardial O₂ consumption in systole). Subendocardial viability ratio, therefore, indirectly estimates the degree of myocardial perfusion and was found to be significantly reduced at 4559 m in healthy volunteers (from 1.63 ± 0.15 to 1.18 ± 0.17; *P* < 0.001).²⁸ The administration of acetazolamide was associated with a smaller degree of SEVR reduction under hypobaric hypoxia exposure and with faster recovery after residing for 3 days at HA, suggesting that acetazolamide may offset the reduction in subendocardial O₂ supply in these conditions.²⁸ Similarly, at HA, also the O₂ supply/demand ratio (SEVR-CaO₂, i.e. SEVR corrected for the arterial O₂ content) displayed significant reductions, which were more pronounced with placebo (from 29.6 ± 4.0 to 17.3 ± 3.0; *P* < 0.001), than with acetazolamide (from 32.1 ± 7.0 to 22.3 ± 4.6; *P* < 0.001), indicating a smaller reduction in subendocardial O₂ supply/demand ratio with acetazolamide administration. The clinical relevance of a reduced SEVR at HA in patients with an increased cardiovascular risk is suggested by a case report of a middle-aged mild hypertensive subject with normal cardiopulmonary exercise testing (CPET) at sea level, in whom acute exposure to an altitude of 3340 m was responsible not only for a marked reduction in SEVR and in SEVR-CaO₂ but also for the development of angina and ischaemic ECG changes when cardiopulmonary stress testing was repeated at HA. This occurred 2 days after a negative stress test at sea level, the only difference being the acute exposure to HA.²⁹

Patients with coronary artery disease (CAD) may face more difficulties with HA exposure, because of the already increased basal coronary flow at sea level, impairment in arterial elastic properties induced by atheromatous lesions and microvascular dysfunction. However, there is little evidence available about HA-induced ischaemia in CAD patients. Schmid et al.³⁰ did not find signs of ischaemia during CPET performed at 3454 m in 22 low-risk ischaemic patients with a normal CPET at sea level. The HA evaluation was performed 6–18 months after revascularization, either by percutaneous stenting or by surgical coronary artery bypass grafting (CABG), and after wash-out from beta-blockers. The same conclusion was reached by

Table 2 Recommendation for ischaemic patients ascending to high altitude

Patient risk class	Recommendations	Class of evidence	Level of evidence	References
General recommendations for all cardiovascular patients	Patients should continue pre-existing medications at HA. All therapy changes, especially dual anti-antiplatelet therapy after drug-eluting stent implantation, must be discussed with a doctor before enacting. Individuals who do not engage in physical exertion at low altitude should not engage in physical activity at HA.	I	C	
	Acetazolamide administration seems to reduce the risk of subendocardial ischaemia at HA in healthy subjects, and thus use of acetazolamide for AMS prevention might be helpful. No data are available, however, in patients with CAD.	Ila	C	28
After AMI/CABG	Patients should wait at least 6 months after uncomplicated ACS episode as well as after revascularization before HA exposure.	I	C	5,12,30
After stenting	Patients should wait at least 6–12 months after coronary stenting before HA exposure.	Ila	C	12,31,33,305
Low risk (CCS 0-I)	May safely ascend to HA, up to 4200 m asl, and practice light-to-moderate physical exertion.	Ila	C	12,31
Moderate risk CAD (CCS II-III)	May carefully ascend up to 2500 m, but physical exercise heavier than light is contraindicated.	Ila	C	22
High risk (CCS IV)	Should not ascend to HA.	I	C	

The strength of these recommendations is to be weighted in the light of the limited evidence available.

AMI, acute myocardial infarction; CABG, coronary artery bypass grafting; CAD, coronary artery disease; CCS, Canadian Cardiovascular Society; HA, high altitude.

De Vries *et al.*^{12,31}, who evaluated 8 low-risk patients with a history of acute myocardial infarction (MI) and 7 controls during the Dutch Heart Expedition 2007 to Aconcagua (4200 m). Furthermore, Messerli-Burgy *et al.*⁵ did not find any increased risk for cardiac arrhythmias in post-MI patients at 3546 m.

Heterogeneous definition of 'low-risk' individuals, limited information about ongoing treatment, previous performance of any revascularization procedure and time since acute MI occurrence reduce the ability to generalize these findings to a wider population.

Evidence for 'medium-risk' patients is even more limited. One study examined the simulated altitude effects on coronary flow in 8 medium-risk patients undergoing stress testing at a simulated altitude of 2500 m. The results showed an inability of their coronary blood flow to adapt after an increase in demand.³⁰

Percutaneous revascularization

Only one study and a couple of case reports are available on this topic. In the above-mentioned study by Schmid *et al.*³⁰, among the 22 low-risk, revascularized ischaemic patients, 15 had ST-elevation MI and 7 non-ST-elevation MI, undergoing CPET at HA. Among these patients, 15 had undergone percutaneous revascularization, and none showed signs of ischaemia during altitude exercise.³⁰ Moreover, Wu *et al.*³² described the case of a 49-year-old male engineer with a history of CAD treated with 2 drug-eluting stents who, 2 years later, went to work on the Qinghai-Tibet railway (4905 m)

for 10 days. ECG, echocardiography, and polysomnography did not show any signs of ischaemia or arrhythmia on multiple trips over 3 years. On the other hand, Basavarajaiah and O'Sullivan³³ reported 2 cases of very late stent thrombosis in patients undergoing intense physical exertion at moderate altitude (3000 m and 1300 m, 16 and 48 months after drug-eluting stent implantation, respectively). However, no evidence supports a causal link between HA and stent thrombosis in these patients. In contrast, intense physical activity has been associated with late stent thrombosis at sea level.²⁹⁵

Coronary artery bypass grafting

In the aforementioned study by Schmidt *et al.*,³⁰ 7 patients underwent CABG. A rapid ascent to HA (3454 m) and submaximal exercise were found to be safe 6 months after CABG.³⁰⁵

Recommendations for ischaemic heart disease patients are reported in Table 2 and Supplementary material online, Table S2.

Systemic arterial hypertension

As described above, BP increases after a few hours at HA (especially at night) and remains virtually unchanged over the following days.³⁴ Hypertensive patients may be more susceptible to HA due to an already elevated hypoxic peripheral and central chemoreflex sensitivity^{305,325} and to alteration in calcium homeostasis.^{335,345}

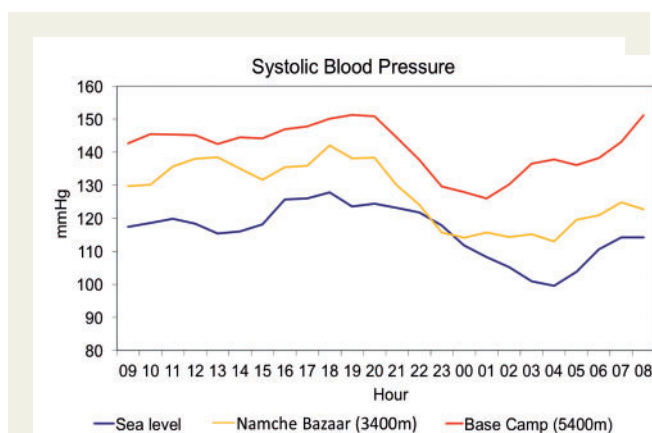


Figure 2 Systolic blood pressure profile for 24 h in a healthy volunteer at different altitudes. Blue line: sea level; yellow line: Namche Bazaar (3400 m); red line: Everest Base Camp 1 (5400 m).

The HIGHCARE-Himalaya study found that the exposure of healthy volunteers to progressively higher altitudes (up to 5400 m) was associated with a progressive, marked increase in systolic and diastolic ambulatory BP, which was more evident than the corresponding increase in conventional BP measurements.⁷ This increase became evident a few hours after HA was reached, persisted during the prolonged altitude sojourn (12 days) and was more pronounced in older subjects (Figure 2).

The efficacy of a number of antihypertensive drugs at HA has been tested in volunteers, also through the various studies performed in the frame of the HIGHCARE projects. Non-selective beta-blockade with carvedilol in healthy subjects resulted in a significant reduction in the BP response to HA but was associated with reduced arterial haemoglobin O₂ saturation and exercise tolerance. In contrast, a highly selective beta-1 adrenergic receptor blocker (nebivolol), while also effective in reducing the pressor response to HA, preserved the normal nocturnal BP dipping, and was associated with a lesser reduction in exercise tolerance at HA.⁸ Monotherapy with a long-acting ARB (telmisartan) demonstrated an impressive response on both daytime and night-time BP, but only up to an altitude of 3400 m. During acute exposure to a higher altitude (5400 m), the drug was ineffective, because of the concomitant suppression of the renin-angiotensin system.⁷ The mechanisms underlying the increase in BP above an altitude of 5000 m are indeed complex in nature, which could explain different responses obtained with different antihypertensive drugs. Interestingly, also acetazolamide was found to antagonize the BP rise induced by HA, as well as the parallel occurrence of central sleep apnoea.^{9,35}

The effects of altitude exposure on hypertensive patients have also been specifically assessed. Wu *et al.*³⁶ studied Chinese railroad workers and reported a greater increase in blood pressure at HA in hypertensive compared with healthy individuals. This observation was confirmed and expanded in the HIGHCARE-Andes Lowlanders Study,³⁵ where acute exposure of hypertensive patients, permanently living at sea level, to an altitude of 3259 m, induced a further significant increase in 24 h BP above their already elevated pressures observed at sea level, with a mildly steeper rise during night-time than during daytime periods.

When considering the effects of antihypertensive treatment at altitude in patients suffering from high blood pressure included in the HIGHCARE ANDES study, the combination of a dihydropyridine calcium channel blocker and an angiotensin II receptor blocker [nifedipine GITS (Gastro Intestinal Therapeutic System) and telmisartan] was found to be effective in controlling BP at HA in hypertensive patients.³⁵

In a large recent study by Keyes *et al.*,³⁵ 672 trekkers, 60 with a prior diagnosis of hypertension, underwent conventional blood pressure measurement at rest at altitudes of 2860, 3400 and 4300 m. No significant differences in mean systolic BP (SBP) and diastolic BP (DBP) among altitudes were found either in normotensive or in hypertensive trekkers, probably because of the large interindividual variability in BP levels at different altitudes obtained with the method of BP measurement used in this study. At 3400 m, 60% of normotensive participants had a BP within 10 mmHg of their BP at 2860 m, while in 21% BP increased above and in 19% decreased below this threshold. Conventional BP decreased with altitude exposure in a greater proportion of hypertensive than of normotensives trekkers (36% vs. 21% at 3400 m, $P=0.01$ and 30% vs. 15% at 4300 m, $P=0.05$). These results should be interpreted on the background of the acknowledged limitations of conventional BP measurements.³⁵ Indeed, conventional BP measurements at rest have been demonstrated to be poorly sensitive to environmental influences, in particular when assessing BP response to altitude.^{7,8} This limitation is emphasized by considering additional data reported by Keyes *et al.*, obtained through the few good quality 24 h ambulatory BP recordings obtained in a very small subgroup of trekkers (2 hypertensive and 4 normotensive individuals). Severe hypertension was recorded in five participants, asymptomatic, regardless of their conventional BP values. Moreover, an increase in nocturnal SBP and DBP in hypertensive but not in normotensive participants was reported, although the authors did not show their mean 24 h, daytime, night-time SBP and DBP values. This study further emphasizes the limitations carried by focusing only on conventional BP measurements performed at rest, when exploring the environmental effects on BP at altitude.

Recommendations for hypertensive patients are summarized in Table 3.

Arrhythmias and implantable devices

Arrhythmias

The increased sympathetic activity⁵ and decreased SaO₂ characterizing HA exposure, in addition to the increase in right ventricular work and in cellular transmembrane shifts of potassium, might be a favourable substrate for arrhythmias. However, to date, an increase in malignant arrhythmias at HA has never been systematically demonstrated. Kujanik *et al.* compared ECG Holter recordings of healthy volunteers obtained at HA and at sea level. They found increased ventricular and supraventricular ectopy already at mild-moderate altitude (1350 m), but these findings were not correlated with a significant increase in sustained ventricular arrhythmias.³⁷ Gibelli *et al.* evaluated microvolt T-wave alternans (MTWA) and HR variability in eight healthy trained subjects at sea level and after a mountain climbing expedition (Pakistan, 8150 m), both at rest and during exercise. Despite enhanced sympathetic activity,

Table 3 Clinical and therapeutic recommendations for hypertensive patients planning to go to high altitude

Patients	Recommendations	Class of evidence	Level of evidence	References
Patients with moderate–severe hypertension and hypertensive patients with moderate–high cardiovascular risk	Check BP values before and during HA sojourn.	IIa	B	7,8,35,36
Well-controlled hypertensive patients/mild hypertensive patients	May reach very HA (>4000 m) with adequate medical therapy.	I	C	8,35,36
Uncontrolled/severe hypertensive patients	Avoid HA exposure in order to prevent risk of organ damage.	I	C	365
Therapy				
	Angiotensin II receptor blockade (tested with Telmisartan) lowers BP in healthy subjects up to 3400 m	I	B	35
	Acetazolamide administration lowers BP at HA while improving SaO ₂ and mountain sickness symptoms	I	B	9
	Combination of nifedipine/telmisartan effectively lowers BP in hypertensive patients at an altitude of 3300 m	I	B	36
	Nebivolol effectively controls HA-induced BP increase and preserves nocturnal BP dipping. Selective beta-1 adrenergic receptors blockade is associated with a lesser impairment of exercise performance when compared with the administration of non-selective beta-blockers	I	C	13
	When moderate–severe hypertensive patients and hypertensive patients at moderate–high cardiovascular risk plan exposure to HA, adequate modification of their antihypertensive therapy should be considered in co-operation with their physician	IIa	C	

The strength of these recommendations is to be weighted in the light of the limited evidence available. BP, blood pressure; HA, high altitude.

MTWA testing during exercise at HA was negative in all participants.³⁸ The authors concluded that there is a low risk of dangerous arrhythmias in healthy trained subjects during exercise under hypobaric hypoxia conditions. The possibility, however, of an increased arrhythmic risk in patients with heart diseases favouring arrhythmias, remains an issue yet to be properly addressed in future studies.³⁷⁵ During sleep at HA, bradycardia, bradyarrhythmias and cycling of heart rate with periodic breathing are common findings in young subjects.¹¹⁵ Recommendations are summarized in [Supplementary material online, Table S3](#).

Pacing and implantable cardioverter devices

Little information is available. Brief exposure to a simulated altitude of 4000 m apparently does not affect ventricular stimulation thresholds³⁹ and a recent observational study showed a low implantable cardioverter device (ICD) activation rate (4%) in patients living at altitude.³⁸⁵ Recommendations are summarized in [Supplementary material online, Table S3](#).

Pulmonary hypertension

We found just one very recent study using flight simulation (exposure to a simulated altitude of 1700–2500 m) to determine the need for supplemental O₂ during prolonged hypoxia in patients with

pulmonary arterial hypertension. In this study, patients with PAH [World Health Organization (WHO) Group 1 with functional class (FC) III symptoms at diagnosis] on vasodilator treatment did not experience any acute deterioration in RV function during simulated mild altitude, at rest or following mild exertion.³⁹⁵

The known physiological effects of hypoxia, however, suggest that in-flight O₂ administration should be considered for patients with WHO-FC III and IV pulmonary hypertension and for those with PaO₂ consistently <60 mmHg.^{405–425} Similarly, such patients, as well as patients known to be affected by pulmonary hypertension, should consider the use of supplemental O₂ when exposed to altitudes >1500–2000 m.⁴³⁵ Recommendations are summarized in [Supplementary material online, Table S3](#).

Congenital heart disease

Adults with congenital heart disease should be stratified by specific haemodynamic and pathophysiological conditions to assess their fitness to HA exposure.⁴⁰

Patients with concurrent pulmonary hypertension should be careful when going to HA. Indeed, the occurrence of an elevated pulmonary pressure due to a pre-existing clinical condition worsens the effects of HA exposure. This is exemplified by the fact that corrective surgery for Fontan patients, in whom maintaining low pulmonary resistance is essential, has a worse outcome when performed at

HA^{41,44S, 45S} than at sea level. On the other hand, after successful surgical correction, short-term HA exposure (at 3454 m) had no negative impact on pulmonary blood flow and exercise capacity when compared with controls and was clinically well tolerated.⁴¹

Patients with cyanotic heart conditions and right to left shunting are likely to develop more severe hypoxaemia than healthy individuals as the increase in pulmonary vascular resistance at HA can worsen the right-to-left shunt.^{46S,47S} However, reduced blood O₂ content is not dangerous by itself, because cardiac output and haematocrit increase sufficiently to maintain adequate systemic O₂ delivery. Various trials carried out in a laboratory setting and during short-term exposure to hypobaric hypoxia at altitude suggest that some of those patients are able to maintain O₂ delivery even with reductions in inspired pO₂, by increasing their cardiac output along with their already higher haematocrit associated with their congenital cardiac abnormalities.^{42,43,44}

Recommendations are summarized in [Supplementary material online, Table S3](#) and can be applied also for air travel, although specific data in this regard are largely missing.

Cerebrovascular conditions

Ischaemic stroke

Even though evidence is limited, HA exposure seems to pose a risk of cerebral ischaemia for patients who already have suffered an ischaemic stroke,^{29,45,46} both because of the direct effect of hypoxia and due to a reduced cerebrovascular reactivity.^{47,48S}

Whether the increase in haematocrit and the greater blood viscosity also contribute to a greater stroke risk at HA is unknown. There are, however, data, although somehow controversial,¹⁹ suggesting that highlanders and people working at altitude might have a higher risk of stroke compared to those living and working at low altitude.^{48,49}

Although presently there is not enough evidence to provide any strong recommendation on this issue, it has been suggested only based on clinical experience that carotid ultrasound imaging, commonly performed in daily practice to check for the existence of complicated plaques or severe carotid stenosis, might help to assess the risk of new events during HA exposure after atherothrombotic stroke.

Haemorrhagic stroke

Arterial blood pressure elevation at HA increases the risk of rupture of cerebral aneurysms and arterial venous malformations as well as the theoretical risk of hypertension-related cerebral haemorrhage.⁵⁰ Nevertheless, there is no evidence on the incidence of intracranial haemorrhage in alpine regions. We could not find any systematic study evaluating the incidence of intracranial bleeding at HA, nor any case report on this topic, although, admittedly, intracranial haemorrhage could be one of the causes of some of the sudden death cases reported in this condition.

Recommendations for cerebrovascular patients are summarized in [Supplementary material online, Table S3](#).

Limitations

This article summarizes the available evidence on the effects of HA exposure in patients with a variety of cardiovascular problems, aimed

at providing practical recommendations for preventive and therapeutic decision-making.

Some general limitations of our article, which apply to all sections, should be acknowledged (see [Supplementary material online, Table S4](#)). In the field of HA medicine only a limited number of well-conducted studies are available, which usually have small sample sizes, primarily evaluating young subjects and commonly with lack a randomized controlled design. Moreover, studies are often not fully comparable because they are performed at different altitude levels and are confounded by a number of different factors, such as the degree of baseline physical conditioning, extent of physical effort at HA, speed of ascent, climate changes, and latitude. Finally, different test settings have been used to investigate the cardiovascular effects of altitude exposure, either in the field or in an experimental laboratory with simulated altitude with either normobaric or hypobaric hypoxia exposure. All these limitations and the lack of a standardized data reporting system make it very difficult to verify the validity and strength of data from a given trial as well as the consistency of results among studies and to reproducibly and precisely assign the observed effects to different altitude levels.

Conclusions

Available studies, although only in a few instances being performed according to a randomized double-blind controlled design, provide indications that, in spite of their 'soft' nature, might nevertheless allow for a safer exposure to hypobaric hypoxia at altitude in patients with a variety of cardiovascular conditions, offering some practical advices and guidance for both patients and physicians. The relative lack of highly powered studies, and the type of data summarized in this article, emphasize the need for additional trials of suitable size to better address the cardiovascular implications of both acute and chronic HA exposure.

Acknowledgement

The authors thank the Department of Innovation, Research and University of the Autonomous Province of Bozen/Bolzano for covering the Open Access publication costs.

Supplementary material

[Supplementary material](#) is available at *European Heart Journal* online.

Conflict of interest: P.A. reports personal fees from Menarini, grants from Daiichi Sankyo, personal fees from Novartis, personal fees from Boeringer, outside the submitted work. All other authors declared no conflicts of interest in relation to this work.

References

For References [1S–48S], please refer to [Supplementary material online](#).

1. Agostoni P. Considerations on safety and treatment of patients with chronic heart failure. *High Alt Med Biol* 2013;**14**:96–100.
2. Bärttsch P, Gibbs JS. Effects of altitude on the heart and the lungs. *Circulation* 2007;**116**:2191–2202.
3. Donegani E, Hillebrandt D, Windsor J, Gieseler U, Rodway G, Schöffl V, Küpper T. Pre-existing cardiovascular conditions and high-altitude travel. Consensus

- statement of the Medical Commission of the Union Internationale des Associations d'Alpinisme (UIAA MedCom). *Travel Medicine and Infectious Disease. Travel Med Infect Dis* 2014;**12**:237–252.
4. Agostoni P, Swenson ER, Bussotti M, Revera M, Meriggi P, Faini A, Lombardi C, Bilo G, Giuliano A, Bonacina D, Modesti PA, Mancina G, Parati G. High-altitude exposure of three weeks duration increases lung diffusing capacity in humans. *J Appl Physiol* (1985) 2011;**110**:1564–1571.
 5. Messerli-Burgy N, Meyer K, Steptoe A, Laederach-Hofmann K. Autonomic and cardiovascular effects of acute high-altitude exposure after myocardial infarction and in normal volunteers. *Circ J* 2009;**73**:1485–1491.
 6. Heistad DD, Abboud FM. Circulatory adjustments to hypoxia. *Circulation* 1980;**61**:463–470.
 7. Parati G, Bilo G, Faini A, Bilo B, Revera M, Giuliano A, Lombardi C, Caldara G, Gregorini F, Styczkiewicz K, Zambon A, Piperno A, Modesti PA, Agostoni P, Mancina G. Changes in 24 h ambulatory blood pressure and effects of angiotensin II receptor blockade during acute and prolonged high-altitude exposure: a randomized clinical trial. *Eur Heart J* 2014;**35**:3113–3122.
 8. Bilo G, Caldara G, Styczkiewicz K, Revera M, Lombardi C, Giglio A, Zambon A, Corrao G, Faini A, Valentini M, Mancina G, Parati G. Effects of selective and non-selective beta-blockade on 24-h ambulatory blood pressure under hypobaric hypoxia at altitude. *J Hypertens* 2011;**29**:380–387.
 9. Parati G, Revera M, Giuliano A, Faini A, Bilo G, Gregorini F, Lisi E, Salerno S, Lombardi C, Ramos Becerra CG, Mancina G, Salvi P. Effects of acetazolamide on central blood pressure, peripheral blood pressure, and arterial distensibility at acute high altitude exposure. *Eur Heart J* 2013;**34**:759–766.
 10. Reeves JT, Groves BM, Sutton JR, Wagner PD, Cymerman A, Malconian MK, Rock PB, Young PM, Houston CS. Operation Everest II: preservation of cardiac function at extreme altitude. *J Appl Physiol* 1987;**63**:531–539.
 11. Boussuges A, Molenat F, Burnet H, Cauchy E, Gardette B, Saintry JM, Jammes Y, Richalet JP. Operation Everest III (Comex '97): modifications of cardiac function secondary to altitude-induced hypoxia. An echocardiographic and Doppler study. *Am J Respir Crit Care Med* 2000;**161**:264–270.
 12. De Vries ST, Komdeur P, Aalbersberg S, van Enst GC, Breeman A, van't Hof AW. Effects of altitude on exercise level and heart rate in patients with coronary artery disease and healthy controls. *Neth Heart J* 2010;**18**:118–121.
 13. Valentini M, Revera M, Bilo G, Caldara G, Savia G, Styczkiewicz K, Parati S, Gregorini F, Faini A, Branzi G, Malfatto G, Magri D, Agostoni P, Parati G. Effects of beta-blockade on exercise performance at high altitude: a randomized, placebo-controlled trial comparing the efficacy of nebivolol versus carvedilol in healthy subjects. *Cardiovasc Ther* 2012;**30**:240–248.
 14. Agostoni P, Swenson ER, Fumagalli R, Salvioni E, Cattadori G, Farina S, Bussotti M, Tamplenizza M, Lombardi C, Bonacina D, Brioschi M, Caravita S, Modesti P, Revera M, Giuliano A, Meriggi P, Faini A, Bilo G, Banfi C, Parati G. Acute high-altitude exposure reduces lung diffusion: data from the HIGHCARE Alps project. *Respir Physiol Neurobiol* 2013;**188**:223–228.
 15. Pratali L, Cavana M, Sicari R, Picano E. Frequent subclinical high-altitude pulmonary edema detected by chest sonography as ultrasound lung comets in recreational climbers. *Crit Care Med* 2010;**38**:1818–1823.
 16. Caravita S, Faini A, Lombardi C, Valentini M, Gregorini F, Rossi J, Meriggi P, Di Rienzo M, Bilo G, Agostoni P, Parati G. Sex and acetazolamide effects on chemoreflex and periodic breathing during sleep at altitude. *Chest* 2015;**147**:120–131.
 17. Sutton JR, Houston CS, Mansell AL, McFadden MD, Hackett PM, Rigg JR, Powles AC. Effect of acetazolamide on hypoxemia during sleep at high altitude. *N Engl J Med* 1979;**301**:1329–1331.
 18. Penalzo D, Arias-Stella J. The heart and pulmonary circulation at high altitudes: healthy highlanders and chronic mountain sickness. *Circulation* 2007;**115**:1132–1146.
 19. Bailey DM, Dehnert C, Luks AM, Menold E, Castell C, Schendler G, Faoro V, Gutowski M, Evans KA, Taudorf S, James PE, McEneny J, Young IS, Swenson ER, Mairbäurl H, Bärtsch P, Berger MM. High-altitude pulmonary hypertension is associated with a free radical-mediated reduction in pulmonary nitric oxide bioavailability. *J Physiol* 2010;**588**:4837–4847.
 20. Osculati G, Revera M, Branzi G, Faini A, Malfatto G, Bilo G, Giuliano A, Gregorini F, Ciambellotti F, Lombardi C, Agostoni P, Mancina G, Parati G; on behalf of HIGHCARE Investigators. Effects of hypobaric hypoxia exposure at high altitude on left ventricular twist in healthy subjects: data from HIGHCARE study on Mount Everest. *Eur Heart J Cardiovasc Imaging* 2016;**17**:635–643.
 21. Holloway CJ, Montgomery HE, Murray AJ, Cochlin LE, Codreanu I, Hopwood N, Johnson AW, Rider OJ, Levett DZ, Tyler DJ, Francis JM, Neubauer S, Grocott MP, Clarke K; Caudwell Xtreme Everest Research Group. Cardiac response to hypobaric hypoxia: persistent changes in cardiac mass, function, and energy metabolism after a trek to Mt. Everest Base Camp. *FASEB J* 2011;**25**:792–796.
 22. Martin DS, Pate JS, Verceuil A, Doyle PW, Mythen MG, Grocott MP; Caudwell Xtreme Everest Research Group. Reduced coagulation at high altitude identified by thromboelastography. *Thromb Haemost* 2012;**107**:1066–1071.
 23. Modesti PA, Rapi S, Paniccia R, Bilo G, Revera M, Agostoni P, Piperno A, Cambi GE, Rogolino A, Biggeri A, Mancina G, Gensini GF, Abbate R, Parati G. Index measured at an intermediate altitude to predict impending acute mountain sickness. *Med Sci Sports Exerc* 2011;**43**:1811–1818.
 24. Agostoni P, Cattadori G, Guazzi M, Bussotti M, Conca C, Lomanto M, Marenzi G, Guazzi MD. Effects of simulated altitude-induced hypoxia on exercise capacity in patients with chronic heart failure. *Am J Med* 2000;**109**:450–455.
 25. Schmid J, Nobel D, Brugger N, Novak J, Palau P, Trepp A, Wilhelm M, Saner H. Short-term high altitude exposure at 3454 m is well tolerated in patients with stable heart failure. *Eur J Heart Fail* 2015;**17**:182–186.
 26. Lombardi C, Meriggi P, Agostoni PG, Faini A, Bilo G, Revera M, Caldara G, Di Rienzo M, Castiglioni P, Bussotti M, Gregorini F, Mancina G, Parati G. High altitude hypoxia and periodic breathing during sleep: gender-related differences. *J Sleep Res* 2013;**22**:322–330.
 27. Wyss CA, Koepfli P, Fretz G, Seebauer M, Schirlo C, Kaufman PA. Influence of altitude exposure on coronary flow reserve. *Circulation* 2003;**108**:1202–1207.
 28. Salvi P, Revera M, Faini A, Giuliano A, Gregorini F, Agostoni P, Becerra CG, Bilo G, Lombardi C, O'Rourke MF, Mancina G, Parati G. Changes in subendocardial viability ratio with acute high-altitude exposure and protective role of acetazolamide. *Hypertension* 2013;**61**:793–799.
 29. Caravita S, Faini A, Bilo G, Revera M, Giuliano A, Gregorini F, Rossi J, Villafuerte FC, Salvi P, Agostoni P, Parati G. Ischemic changes in exercise ECG in a hypertensive subject acutely exposed to high altitude. Possible role of a high-altitude induced imbalance in myocardial oxygen supply-demand. *Int J Cardiol* 2014;**171**:e100–e102.
 30. Schmid J-P, Noveanu M, Gaillet R, Hellige G, Wahl A, Saner H. Safety and exercise tolerance of acute high altitude exposure (3454 m) among patients with coronary artery disease. *Heart* 2006;**92**:921–925.
 31. de Vries ST, Kleijn SA, van't Hof AWJ, Snaak H, van Enst GC, Kamp O, Breeman A. Impact of high altitude on echocardiographically determined cardiac morphology and function in patients with coronary artery disease and healthy controls. *Eur J Echocardiogr* 2010;**11**:446–450.
 32. Wu T, Ding S, Kayser B. Work at high altitude after coronary stenting: safe? *Wilderness Environ Med* 2010;**21**:86–87.
 33. Basavarajiah S, O'Sullivan M. Physical exertion at high altitude-another risk factor for coronary stent thrombosis? *J Invasive Cardiol* 2013;**25**:E66–E68.
 34. Liu Y, Zhang JH, Gao XB, Wu XJ, Yu J, Chen JF, Bian SZ, Ding XH, Huang L. Correlation between blood pressure changes and AMS, sleeping quality and exercise upon high-altitude exposure in young Chinese men. *Mil Med Res* 2014;**1**:19.
 35. Bilo G, Villafuerte FC, Faini A, Anza-Ramírez C, Revera M, Giuliano A, Caravita S, Gregorini F, Lombardi C, Salvioni E, Macarilupu JL, Ossoli D, Landaveri L, Lang M, Agostoni P, Sosa JM, Mancina G, Parati G. Ambulatory blood pressure in untreated and treated hypertensive patients at high altitude: the High Altitude Cardiovascular Research-Andes study. *Hypertension* 2015;**65**:1266–1272.
 36. Wu T-Y, Ding SQ, Liu JL, Yu MT, Jia JH, Chai ZC, Dai RC, Zhang SL, Li BY, Pan L, Liang BZ, Zhao JZ, Qi DT, Sun YF, Kayser B. Who should not go high: chronic disease and work at altitude during construction of the Qinghai-Tibet railroad. *High Alt Med Biol* 2007;**8**:88–107.
 37. Kujanik S, Snincák M, Vokál J, Podracký J, Koval J. Periodicity of arrhythmias in healthy elderly men at the moderate altitude. *Physiol Res* 2000;**49**:285–287.
 38. Gibelli G, Fantoni C, Anzà C, Cattaneo P, Rossi A, Montenero A, Baravelli M. Arrhythmic risk evaluation during exercise at high altitude in healthy subjects: role of microvolt T-wave alternans. *Pacing Clin Electrophysiol* 2008;**31**:1277–1283.
 39. Weilenmann D, Duru F, Schönbeck M, Schenk B, Zwicky P, Russi EW, Candinas R. Influence of acute exposure to high altitude and hypoxemia on ventricular stimulation thresholds in pacemaker patients. *Pacing Clin Electrophysiol* 2000;**23**:512–515.
 40. Luks AM, Stout K, Swenson ER. Evaluating the safety of high-altitude travel in patients with adult congenital heart disease. *Congenit Heart Dis* 2010;**5**:220–232.
 41. Staempfli R, Schmid JP, Schenker S, Eser P, Trachsel LD, Deluigi C, Wustmann K, Thomet C, Greutmann M, Tobler D, Stambach D, Wilhelm M, Schwerzmann M. Cardiopulmonary adaptation to short-term high altitude exposure in adult Fontan patients. *Heart* 2016;**102**:1296–1301.
 42. Vargas E, Spielvogel H. Chronic mountain sickness, optimal hemoglobin, and heart disease. *High Alt Med Biol* 2006;**7**:138–149.
 43. Berman W Jr, Wood SC, Yabek SM, Dillon T, Fripp RR, Burstein R. Systemic oxygen transport in patients with congenital heart disease. *Circulation* 1987;**75**:360–368.
 44. Broberg CS, Uebing A, Cuomo L, Thein SL, Papadopoulos MG, Gatzoulis MA. Adult patients with Eisenmenger syndrome report flying safely on commercial airlines. *Heart* 2006;**93**:1599–1603.
 45. Clarke C. Acute mountain sickness: medical problems associated with acute and subacute exposure to hypobaric hypoxia. *Postgrad Med J* 2006;**82**:748–753.
 46. Le Roux G, Larmignat P, Marchal M, Richalet J. Haemostasis at high altitude. *Int J Sports Med* 1992;**13**:S49–S51.

-
47. Van Osta A, Moraine J-J, Melot C, Mairbaurl H, Maggiorini M, Naeije R. Effects of high altitude exposure on cerebral hemodynamics in normal subjects. *Stroke* 2005;**36**:557–560.
48. Jha SK, Anand AC, Sharma V, Kumar N, Adya CM. Stroke at high altitude: Indian experience. *High Alt Med Biol* 2002;**3**:21–27.
49. Niaz A, Nayyar S. Cerebrovascular stroke at high altitude. *J Coll Physicians Surg Pak* 2003;**13**:446–448.
50. Wilson MH, Newman S, Imray CH. The cerebral effects of ascent to high altitudes. *Lancet Neurol* 2009;**8**:175–191.