



Identification of Rice Genes Associated With Enhanced Cold Tolerance by Comparative Transcriptome Analysis With Two Transgenic Rice Plants Overexpressing *DaCBF4* or *DaCBF7*, Isolated From Antarctic Flowering Plant *Deschampsia antarctica*

OPEN ACCESS

Edited by:

Ju-Kon Kim,
Seoul National University, South Korea

Reviewed by:

Kazuo Nakashima,
Japan International Research Center
for Agricultural Sciences, Japan
Hye Sun Cho,
Korea Research Institute of Bioscience
& Biotechnology, South Korea

*Correspondence:

Woo Taek Kim
wtkim@yonsei.ac.kr
Hyoungseok Lee
soulaid@kopri.re.kr

†These authors have contributed
equally to this work.

Specialty section:

This article was submitted to
Plant Abiotic Stress,
a section of the journal
Frontiers in Plant Science

Received: 05 February 2018

Accepted: 16 April 2018

Published: 03 May 2018

Citation:

Byun MY, Cui LH, Lee J, Park H,
Lee A, Kim WT and Lee H (2018)
Identification of Rice Genes
Associated With Enhanced Cold
Tolerance by Comparative
Transcriptome Analysis With Two
Transgenic Rice Plants
Overexpressing *DaCBF4* or *DaCBF7*,
Isolated From Antarctic Flowering
Plant *Deschampsia antarctica*.
Front. Plant Sci. 9:601.
doi: 10.3389/fpls.2018.00601

Mi Young Byun^{1†}, Li Hua Cui^{2†}, Jungeun Lee^{1,3}, Hyun Park^{1,3}, Andosung Lee²,
Woo Taek Kim^{2*} and Hyoungseok Lee^{1,3*}

¹ Unit of Polar Genomics, Korea Polar Research Institute, Incheon, South Korea, ² Department of Systems Biology, Yonsei University, Seoul, South Korea, ³ Polar Science, University of Science & Technology, Daejeon, South Korea

Few plant species can survive in Antarctica, the harshest environment for living organisms. *Deschampsia antarctica* is the only natural grass species to have adapted to and colonized the maritime Antarctic. To investigate the molecular mechanism of the Antarctic adaptation of this plant, we identified and characterized *D. antarctica* C-repeat binding factor 4 (*DaCBF4*), which belongs to monocot CBF group IV. The transcript level of *DaCBF4* in *D. antarctica* was markedly increased by cold and dehydration stress. To assess the roles of *DaCBF4* in plants, we generated a *DaCBF4*-overexpressing transgenic rice plant (*Ubi:DaCBF4*) and analyzed its abiotic stress response phenotype. *Ubi:DaCBF4* displayed enhanced tolerance to cold stress without growth retardation under any condition compared to wild-type plants. Because the cold-specific phenotype of *Ubi:DaCBF4* was similar to that of *Ubi:DaCBF7* (Byun et al., 2015), we screened for the genes responsible for the improved cold tolerance in rice by selecting differentially regulated genes in both transgenic rice lines. By comparative transcriptome analysis using RNA-seq, we identified 9 and 15 genes under normal and cold-stress conditions, respectively, as putative downstream targets of the two *D. antarctica* CBFs. Overall, our results suggest that Antarctic hairgrass *DaCBF4* mediates the cold-stress response of transgenic rice plants by adjusting the expression levels of a set of stress-responsive genes in transgenic rice plants. Moreover, selected downstream target genes will be useful for genetic engineering to enhance the cold tolerance of cereal plants, including rice.

Keywords: C-repeat/DRE binding factor, cold tolerance, *Deschampsia antarctica*, RNA-seq, transgenic plant, rice

INTRODUCTION

Plants are sessile organisms and are constantly exposed to adverse environmental conditions, to which they have adapted (Lata and Prasad, 2011; Claeys and Inzé, 2013). The maritime Antarctic climate has low temperatures, high soil salinity, and a water deficit, which hamper the survival of angiosperms. *Deschampsia antarctica* Desv. (Poaceae) is one of two flowering plants that naturally inhabit Antarctica (Alberdi et al., 2002). This species has developed various adaptive mechanisms to survive in the Antarctic.

The adaptations that enable *D. antarctica* to survive in the harsh environment of the maritime Antarctic include changes in the leaf anatomy and the physiology of the photosynthetic apparatus (Gielwanowska et al., 2005; Sáez et al., 2017). Increased levels of nonstructural carbohydrates, apoplastic antifreeze proteins, and ice recrystallization inhibition proteins (biochemical cryoprotectants) reportedly enable plants to flourish under Antarctic conditions (Bravo and Griffith, 2005; John et al., 2009; Pastorczyk et al., 2014). In addition, transcriptome analysis of *D. antarctica* under abiotic stress demonstrated changes in the expression levels of stress-responsive genes (Lee et al., 2013a). However, the signaling pathways that mediate activation of the expression of the stress-related genes responsible for the abiotic stress tolerance of this plant are unclear.

In *Arabidopsis*, C-repeat binding factor (CBF)/dehydration-responsive element-binding protein (DREB) is the major transcription factor responsible for induction of cold tolerance (Thomashow, 2010). Also, CBF overexpression in monocot plants resulted in enhanced tolerance to diverse abiotic stresses including cold and freezing. When overexpressed in barley, *TaDREB3*, *TaCBF14*, and *TaCBF15* from wheat and *HvCBF2a* from barley resulted in enhanced frost tolerance by increasing the transcript levels of downstream target genes such as *COR14b* and *DHN5* (Kovalchuk et al., 2013; Soltész et al., 2013; Jeknić et al., 2014). Moreover, *TaCBF3* overexpression enhanced tolerance to frost and cold in wheat and barley (Morran et al., 2011). Expression of cotton *GhDREB* in barley also resulted in enhanced cold tolerance (Gao et al., 2009). Indeed, overexpression of the CBF genes from rice (*OsDREB1*), barley (*HvCBF4*), and maize (*ZmCBF3*) resulted in enhanced cold tolerance in rice (Ito et al., 2006; Oh et al., 2007; Xu et al., 2011).

Followed by the discovery of AtCBF1 as the major transcriptional regulator responsible for inducing the expression of downstream *COR* genes in *Arabidopsis* (Jaglo-Ottosen et al., 1998), the CBF proteins of monocot cereal plants have been discovered genome-wide (Stockinger, 2009; Tondelli et al., 2011). Moreover, Badawi et al. (2007) divided monocot CBF proteins into groups I–IV, and group V was recently identified (Byun et al., 2015).

However, few studies have aimed to identify the downstream target genes responsible for the cold tolerance in cereal plants. Overexpression of the rice CBF homolog *OsDREB1A*, have shown enhanced tolerance of transgenic rice to drought, high-salt, and low-temperature stresses. A microarray analysis of 21,500 rice genes together with northern blot analysis confirmed that 12 genes, including dehydrins and a protease inhibitor, were upregulated in *OsDREB1*-overexpressing rice plants (Ito et al., 2006). Rice plants continuously overexpressing *HvCBF4* from barley showed improved tolerance to cold, drought, and high-salt stresses. A microarray analysis revealed that the transcript levels of 15 genes, including Bowman Birk trypsin inhibitor 1 (*BBT1*), were upregulated in *HvCBF4* overexpressing rice plants under normal condition (Oh et al., 2007).

In previous work, we generated transgenic rice plants overexpressing *DaCBF7*, a CBF gene from *D. antarctica*, and analyzed the expression levels of downstream genes. *DaCBF7* overexpression resulted in enhanced cold tolerance compared to wild-type plants (Byun et al., 2015). In this study, we found that the *D. antarctica* CBF4 gene (*DaCBF4*) encodes a homolog of cereal CBF group IV. The expression of this gene was induced in *D. antarctica* plants under cold and drought stress. Overexpression of *DaCBF4* in rice resulted in a cold-specific phenotype similar to that of the *DaCBF7*-overexpressing plants. Thus, we identified the genes responsible for increasing the cold tolerance of rice by screening differentially regulated genes common to *DaCBF7*- and *DaCBF4*-overexpressing rice plants. Based on these results, we suggest that the Antarctic hairgrass *DaCBF4* gene plays a crucial role in the cold tolerance in transgenic rice plants. Selected downstream target genes common to *Ubi:DaCBF4* and *Ubi:DaCBF7* will be useful for genetic engineering to enhance the cold-stress tolerance of cereal plants, including rice.

MATERIALS AND METHODS

Phylogenetic Analysis

The amino acid sequences of *DaCBF4* and other CBF/DREB homologs from monocot crops were retrieved from the GenBank database and proofread. All downstream analyses were performed using the MEGA7 software (Kumar et al., 2016). Phylogenetic trees were constructed from the data sets by the neighbor-joining method based on the JTT matrix-based model. All positions with <95% site coverage were eliminated. Fewer than 5% alignment gaps, missing data, and ambiguous bases were allowed at any position. Supports for internal branches were tested by bootstrap analyses of 1,000 replications. The accession numbers of CBF homologs from five monocot species—Antarctic hairgrass (*D. antarctica*), barley (*Hordeum vulgare*), rice (*Oryza sativa*), hexaploid wheat (*Triticum aestivum*), and einkorn wheat (*Triticum monococcum*)—are presented in Supplementary Table 1.

Subcellular Localization Experiment

The synthetic green fluorescent protein (*sGFP*)-coding region was fused in-frame to the 3' end of the full-length *DaCBF4*-coding region and inserted into the pEarleyGate 100 binary

Abbreviations: CBF, C-repeat binding factor; CRT, C repeat; DEG, differentially expressed gene; DRE, dehydration-responsive element; FDR, false discovery rate; RT-qPCR, Real-time reverse transcription-quantitative polymerase chain reaction; RNA-seq, RNA sequencing; FPKM, fragments per kilobase of exon model per million mapped reads; sGFP, synthetic green fluorescent protein; Ubi, ubiquitin.

vector. The vector was transformed into *Agrobacterium tumefaciens* strain GV3101 by electroporation. Tobacco (*Nicotiana benthamiana*) leaves were co-infiltrated using *A. tumefaciens* that contained the 35S:*DaCBF4-sGFP* or 35S:*sGFP* constructs. A 35S:nuclear localizing signal-monomeric red fluorescent protein (35S:*NLS-mRFP*) construct was used as a control nuclear protein. Two days after infection, protoplasts were extracted from the tobacco leaves and visualized by fluorescence microscopy (BX51, Olympus).

Plant Materials and Stress Conditions

Deschampsia antarctica was collected near the King Sejong Antarctic Station (62°14'29"S; 58°44'18"W) on the Barton Peninsula of King George Island in January 2007. The plants were cultured *in vitro* in tissue culture medium [Murashige and Skoog (MS) medium; 2% sucrose and 0.8% phytoagar (pH 5.7)] under a 16-h light/8-h dark photoperiod with a light intensity of 150 $\mu\text{mol m}^{-2} \text{s}^{-1}$ at 15°C. For cold-stress conditions, plants grown at 15°C were transferred to a climate chamber at 4°C for the indicated periods. For drought-stress conditions, plants were transferred to filter paper and dried at 15°C. For high-salt conditions, plants were transferred to MS medium supplemented with 150 mM NaCl and incubated at 15°C. RNA was extracted from leaves and analyzed at various times after the imposition of stress. All the samplings for expression analysis was conducted at the same time to avoid variation by circadian rhythm.

Total RNA Extraction and Reverse Transcription-Quantitative Polymerase Chain Reaction

Total RNA was isolated from leaves of five *D. antarctica* plants with four tillers each (longest tiller, 5 cm) using an RNeasy Plant Mini Kit in conjunction with the RNase free DNase set (Qiagen) according to the manufacturer's instructions. The quantity and quality of total RNA were determined by spectroscopic measurements at 230, 260, and 280 nm using an ND-1000 spectrophotometer (NanoDrop Technologies, Wilmington, DE), and RNA integrity was checked by electrophoresis in a 2% agarose gel. First-strand cDNA was synthesized from 2 μg of total RNA using Superscript III (Invitrogen). Real-time reverse transcription-quantitative polymerase chain reaction (RT-qPCR) analysis was performed in 20- μL reaction mixtures that included 1 μL of a 1:15 diluted cDNA template, 2 μM of each primer, and 10 μL of QuantiFast SYBR Green PCR kit (Qiagen). Amplified signals were monitored continuously using the Mx3000P qPCR System (Stratagene). The amplification protocol was as follows: 5 min of denaturation and enzyme activation at 95°C; followed by 40 cycles at 95°C for 5 s, 58°C for 20 s, and 72°C for 15 s. The *DaEF1a* gene was used as an internal control (Lee et al., 2010). The DNA sequences of primers used for PCR amplification are listed in Supplementary Table 2.

Generation of *DaCBF4*-Overexpressing Transgenic Rice Plants

To generate *Ubi:DaCBF4* transgenic rice plants, the 651-bp *DaCBF4*-coding region was inserted into the pGA2897 vector.

The binary vector was transformed into *A. tumefaciens* strain LBA4404 by electroporation and used for rice transformation as described previously (Byun and Kim, 2014). Callus tissue was induced from wild-type rice (*O. sativa* L. japonica variety "Dong-Jin") seeds, co-cultivated with *A. tumefaciens*, and selected on callus induction medium containing antibiotics (40 mg/L hygromycin B and 250 mg/L carbenicillin). Selected callus tissue was transferred to a regeneration medium. Transgenic T0 plants were transplanted to soil in a greenhouse and T2 plants were used for phenotypic analysis.

RT-PCR and DNA Gel-Blot Analysis

Total RNA was isolated from mature leaves of wild-type and *Ubi:DaCBF4* transgenic rice plants using TRIzol reagent [38% equilibrated phenol, pH 4.3, 1 M guanidine thiocyanate, 1 M ammonium thiocyanate, 0.3 M sodium acetate, pH 5.2, and 5% glycerol (v/v)]. First-strand cDNA was synthesized from 2 μg of total RNA using oligo(dT) primers and TOPscript Reverse Transcriptase (Enzymomics). To compare the *DaCBF4* expression levels of the transgenic lines, *DaCBF4* was amplified using a gene-specific primer set (Supplementary Table 2). To distinguish the independent lines of *Ubi:DaCBF4* transgenic plants, genomic Southern blotting was performed. Total genomic DNA was isolated from mature rice leaves using cetyltrimethylammonium bromide (CTAB) solution, digested with *Bam*HI, and separated in a 0.8% agarose gel. The gel was treated sequentially with depurifying, denaturing, and neutralizing solutions, and the DNA was transferred to Hybond-N nylon membranes. The blot was hybridized with a ³²P-labeled hygromycin B phosphotransferase (*hph*) probe under high-stringency conditions.

Rice Plant Materials and Stress Conditions

Dry rice seeds were sterilized with 0.4% NaClO solution for 30 min and washed several times with sterilized water. Seeds of wild-type and *Ubi:DaCBF4* transgenic rice plants were germinated on half-strength MS medium containing vitamins (Duchefa Biochemie), 3% sucrose, and 0.7% phytoagar. Seedlings were grown for 2 weeks at 28°C under a 16-h light/8-h dark photoperiod and then transplanted to soil in a greenhouse as described by Byun et al. (2017). To investigate the effect of *DaCBF4* on stress tolerance, 6-week-old plants grown in the growth room were subjected to various abiotic stresses, observed, and photographed. For cold-stress conditions, wild-type and *DaCBF4*-overexpressing plants (independent lines #1 and #2) grown at 28°C were transferred to 4°C for 5 days, and then returned to 28°C.

RNA-Sequencing

RNA-sequencing (RNA-seq) was carried out using total RNA from 6-week-old wild-type and *DaCBF4*-overexpressing line #1 plants under normal and cold-stress conditions (1 or 6 days after transfer to 4°C). Total RNAs were extracted from leaves of each genotype and each treatment using TRIzol reagent, treated with DNase I to remove contaminant genomic DNA, and purified using the RNeasy Mini kit (Qiagen) following the manufacturer's instructions. Three different biological replicates

were prepared. The integrity and concentration of RNA were determined using a Bioanalyzer system (RIN > 6) (Agilent Technologies) and a Qubit RNA broad-range assay kit (Life Technologies), respectively. To construct the sequencing library, 1.5 µg of total RNA from each sample was used as input for the TruSeq RNA sample prep kit ver. 2 (Illumina). The libraries were validated, quantified using the Bioanalyzer and the library qPCR quantification method, multiplexed with equal ratios, and loaded into the flow cell of the Illumina MiSeq Reagent Kit ver. 3 (2 × 75 runs). Sequencing was performed using a MiSeq Sequencer system (Illumina) and a total of 3 Gb (40 M paired-end reads) of sequencing data were generated (Q₃₀ > 98%). The RNA-Seq data have been deposited to the Sequence Read Archive (SRA) under accession number SRP134977.

Transcriptomic Data Analysis

All analyses were performed using the CLC Genomics Workbench ver. 8 module (Qiagen). After quality and adapter trimming, the raw reads were mapped to the rice reference genome using a gene model annotation file from the Michigan State University rice genome annotation project database ver. 7 (<http://rice.plantbiology.msu.edu/>). The gene expression levels were determined in units of fragments per kilobase of exon model per million mapped reads (FPKM) normalized values (Mortazavi et al., 2008). For statistical analysis, *t*-tests and Baggerley's tests were performed on the original and normalized read counts. In addition, several relevant values for analysis, such as *p*-values, corrected *p*-values for multiple correction, and test statistics, were calculated in the "multi-group comparison" option. Differentially expressed genes were those with a *p* < 0.05, corrected *p*-value of false discovery rate (FDR) < 0.05, and absolute fold-change value > 1.5 from pair-wise comparisons of FPKM values among different samples.

Recombinant Protein Expression and Gel Retardation Assay

Recombinant protein expression was conducted as described previously (Byun et al., 2015) with minor modifications. Full-length coding region of *DaCBF4* was inserted into the pProEx-HTa protein expression vector (Invitrogen, Carlsbad, CA, USA). Recombinant protein expressed in *E. coli* Rosetta (DE3) cells was purified by affinity chromatography using Ni-NTA agarose (Qiagen) according to the manufacturer's protocols. Purified protein was concentrated with Amicon Ultra-15 Centrifugal Filter Units (Merck). To investigate the characteristics of DaCBF4 as a transcription factor, gel retardation assays were conducted. The DNA fragments containing the CRT/DRE core repeat or low-temperature responsive element (LTRE) sequence were labeled with ³²P-dCTP and incubated with recombinant DaCBF4 proteins in binding buffer [10 mM Tris HCl, pH 8.0, 50 mM NaCl, 1 mM EDTA, 1 mM DTT, and 5% glycerol (v/v)]. After incubation for 10 min on ice, components of the reaction mixtures were separated on 6% non-denatured polyacrylamide gels in 0.5× Tris-borate EDTA buffer. Gel was dried and visualized by autoradiography.

RESULTS

Identification and Characterization of DaCBF4

As the overexpression of barley *HvCBF4* and wheat *TaCBF14* (group IV) increased the cold-stress tolerance of transgenic rice and barley plants, respectively (Oh et al., 2007; Soltész et al., 2013), we cloned the *D. antarctica* cDNA sequence encoding the CRT-DREB-binding factor protein based on its sequence homology with *HvCBF4* (Lee et al., 2013b). The gene was designated *DaCBF4*, and the sequence was submitted to GenBank (KM978992).

DaCBF4 encodes a protein of 216 amino acids with a conserved AP2 DNA-binding domain. To examine its phylogenetic relationships with CBF proteins from other monocot plants, we compared the amino acid sequence of DaCBF4 with those of 37 hexaploid wheat, 9 einkorn wheat, 17 barley, 9 rice, and 1 *D. antarctica* CBF homologs (Badawi et al., 2007; Byun et al., 2015). All members of the monocot CBF family were divided into five groups; DaCBF4 belonged, as expected, to group IV (Supplementary Figure 1). In the AP2 domain and flanking regions, DaCBF4 shares 70–75, 76–78, 67–79, 75–91, and 56–65% sequence identities with the members of groups I, II, III, IV, and V, respectively.

DaCBF4 Is a Nuclear-Localized Transcription Factor

Transcription factors must localize to the nucleus to induce the expression of downstream target genes. To examine the cellular localization of DaCBF4, an *in vivo* cell targeting experiment was performed. The *sGFP* gene was fused in-frame to the 3' end of the *DaCBF4*-coding region under the control of the CaMV 35S promoter. *DaCBF4-sGFP* and *NLS-mRFP* (a nuclear marker) constructs were co-expressed in tobacco (*N. benthamiana*) leaves using the *Agrobacterium*-mediated infiltration method. The protoplasts were extracted and visualized by fluorescence microscopy. The fluorescence signal of sGFP was uniformly distributed throughout the cell (Figure 1). In contrast, the *DaCBF4-sGFP* fusion protein was found primarily in the nucleus, and its signal merged with that of NLS-mRFP, indicating that DaCBF4 is targeted to the nucleus of plant cells.

Induction of *DaCBF4* Expression in *D. antarctica* by Cold and Drought Stresses

The expression of numerous monocot *CBF* genes is reportedly induced in response to abiotic stresses in plants (Dubouzet et al., 2003; Vágújfalvi et al., 2005; Byun et al., 2015). To investigate the effects of abiotic stresses on the *DaCBF4* transcript level in Antarctic hairgrass, *DaCBF4* mRNA levels were analyzed by RT-qPCR using total RNA isolated from leaves of *D. antarctica* plants subjected to cold (4°C), salt (150 mM NaCl), or drought (air-dried on filter paper) stress. The *DaCBF4* transcript level increased in response to cold-stress treatment. *DaCBF4* expression was induced from 30 min after cold stress, peaked at 4 h, and then declined but remained high until 48 h. Drought stress resulted in a similar pattern of *DaCBF4* expression. In contrast, salt stress did not activate the transcription of *DaCBF4*.

(Figure 2). The *DaIRIP*, *DaP5CS*, and *DaDHN1* genes were used as positive controls for the cold, salt, and drought stresses, respectively.

Generation and Molecular Analysis of *Ubi:DaCBF4* Transgenic Rice Plants

Genetic transformation is widely used to investigate the functional roles of specific genes in plants. However, transformation of genes into *D. antarctica* is not yet possible. Therefore, we overexpressed *DaCBF4* in rice, a monocot model plant of the same family as *D. antarctica*.

We generated transgenic rice plants constitutively overexpressing *DaCBF4* under the control of the maize

ubiquitin (*Ubi*) promoter (Figure 3A). Semi-quantitative RT-PCR confirmed that two different *Ubi:DaCBF4* transgenic plants overexpressed *DaCBF4* (Figure 3B). DNA gel-blot analysis indicated that these *Ubi:DaCBF4* transgenic plants were independent lines (Figure 3C). Transgenic *Arabidopsis* plants overexpressing *AtCBF1*, *AtCBF2*, or *AtCBF3* at high levels exhibit the dwarf phenotype (small stature and slow growth) under normal conditions (Gilmour et al., 2004). Moreover, in cereals, transgenic rice overexpressing *OsDREB1* and transgenic barley overexpressing *TaCBF14*, *TaCBF15*, or *HvCBF2A*, showed moderate retarded development under normal condition compared to wild-type plants (Ito et al., 2006; Soltész et al., 2013; Jeknić et al., 2014). In contrast, the two independent *Ubi:DaCBF4* transgenic lines (#1 and #2) exhibited

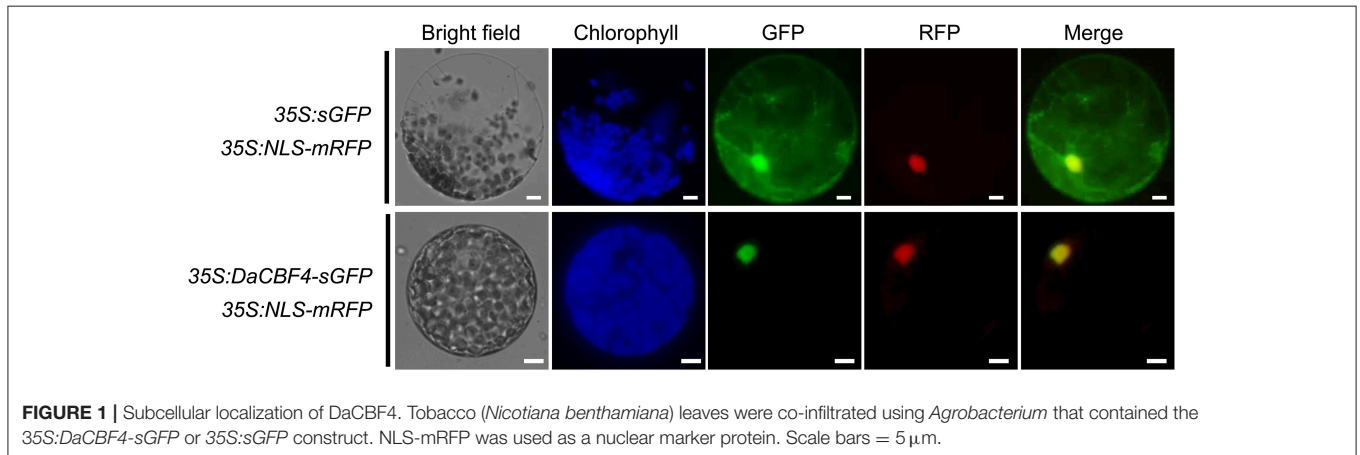


FIGURE 1 | Subcellular localization of *DaCBF4*. Tobacco (*Nicotiana benthamiana*) leaves were co-infiltrated using *Agrobacterium* that contained the 35S:*DaCBF4*-sGFP or 35S:sGFP construct. NLS-mRFP was used as a nuclear marker protein. Scale bars = 5 μ m.

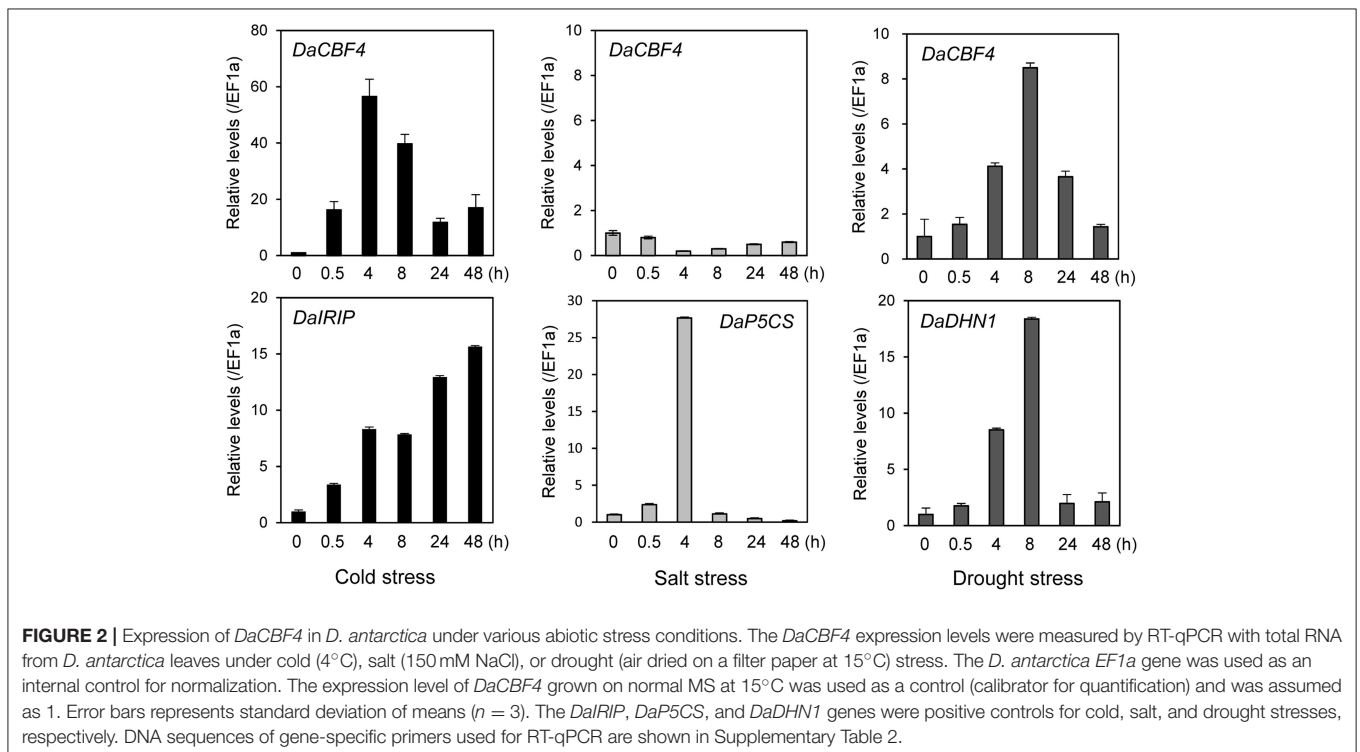


FIGURE 2 | Expression of *DaCBF4* in *D. antarctica* under various abiotic stress conditions. The *DaCBF4* expression levels were measured by RT-qPCR with total RNA from *D. antarctica* leaves under cold (4°C), salt (150 mM NaCl), or drought (air dried on a filter paper at 15°C) stress. The *D. antarctica EF1a* gene was used as an internal control for normalization. The expression level of *DaCBF4* grown on normal MS at 15°C was used as a control (calibrator for quantification) and was assumed as 1. Error bars represents standard deviation of means ($n = 3$). The *DaIRIP*, *DaP5CS*, and *DaDHN1* genes were positive controls for cold, salt, and drought stresses, respectively. DNA sequences of gene-specific primers used for RT-qPCR are shown in Supplementary Table 2.

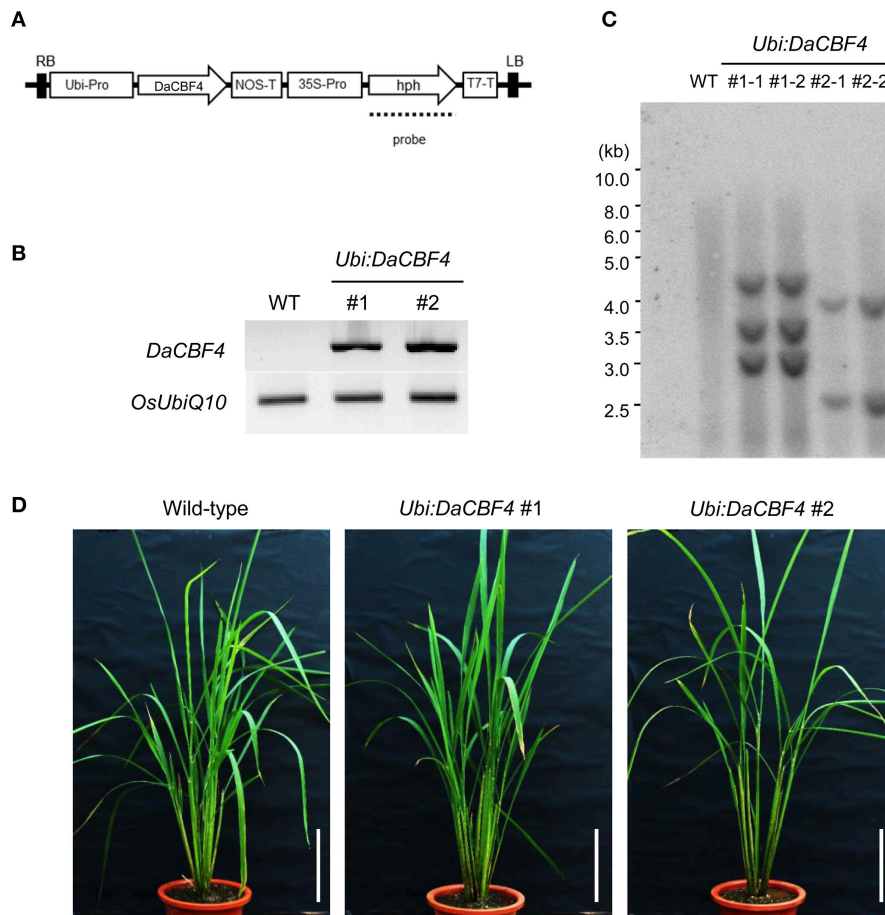


FIGURE 3 | Generation and molecular characterization of *Ubi:DaCBF4* transgenic rice plants. **(A)** Schematic representation of the binary vector construct used for *DaCBF4* overexpression under the control of the maize ubiquitin promoter. RB, right border; Ubi-Pro, ubiquitin promoter; NOS-T, terminator sequence from nopaline synthase gene; 35S-Pro, CaMV 35S promoter; hph, hygromycin B phosphotransferase; T7-T, T7 terminator; LB, left border. **(B)** Semi-quantitative RT-PCR analysis of 6-week-old wild-type and two independent *Ubi:DaCBF4* T2 transgenic plants (lines #1 and #2). **(C)** Genomic Southern blot analysis. Total leaf genomic DNA was isolated from wild-type and T2 *Ubi:DaCBF4* transgenic rice plants. DNA was digested by *Bam*HI and hybridized with 32 P-labeled hph probe under high-stringency conditions. **(D)** Overall morphology of 2-month-old wild type and T2 *Ubi:DaCBF4* transgenic (independent lines #1 and #2) rice plants. Rice plants were grown under greenhouse conditions. Scale bars = 10 cm.

wild-type vegetative growth under our experimental conditions (**Figure 3D**).

Effect of *DaCBF4* Overexpression on Abiotic Stress Tolerance in Transgenic Rice Plants

Overexpression of heterologous *CBF* genes in rice results in tolerance to cold (Byun et al., 2015), drought and high salt (Oh et al., 2005; Cui et al., 2011), or cold, drought, and high salt (Oh et al., 2007; Xu et al., 2011). To investigate whether overexpression of *DaCBF4* is correlated with tolerance to abiotic stresses in transgenic plants, we assessed the effect of cold stress on *Ubi:DaCBF4* transgenic rice plants. Wild-type and *Ubi:DaCBF4* transgenic plants were grown at 28°C for 6 weeks in the growth room and transferred to the cold room (4°C). After 5 days of cold-stress conditions, wild-type plants showed

wilting and did not recover after removal from the cold-stress conditions, while most of the *Ubi:DaCBF4* transgenic rice plants recovered, appeared healthy, and continued to grow (**Figure 4A**). The survival rate of the wild-type rice plants was 11.8% (12 of 101), and the survival rates of *Ubi:DaCBF4* lines #1 and #2 were 63.6% (35 of 55) and 41.3% (19 of 46), respectively (**Figure 4B**).

As *DaCBF4* expression was also induced by drought (**Figure 2**), we assessed the tolerance of wild-type and *Ubi:DaCBF4* rice plants to drought stress. Six-week-old wild-type and *Ubi:DaCBF4* plants were grown without a water supply for 9 days. Both wild-type and *DaCBF4*-overexpressing plants were severely wilted, and most plants did not recover and died even after re-watering. Next, we compared the salt tolerance of the wild-type and *Ubi:DaCBF4* transgenic lines. Six-week-old plants were irrigated with water supplemented with 200 mM NaCl for 10 days, re-watered with tap water, and their growth patterns were observed. Under this condition, both

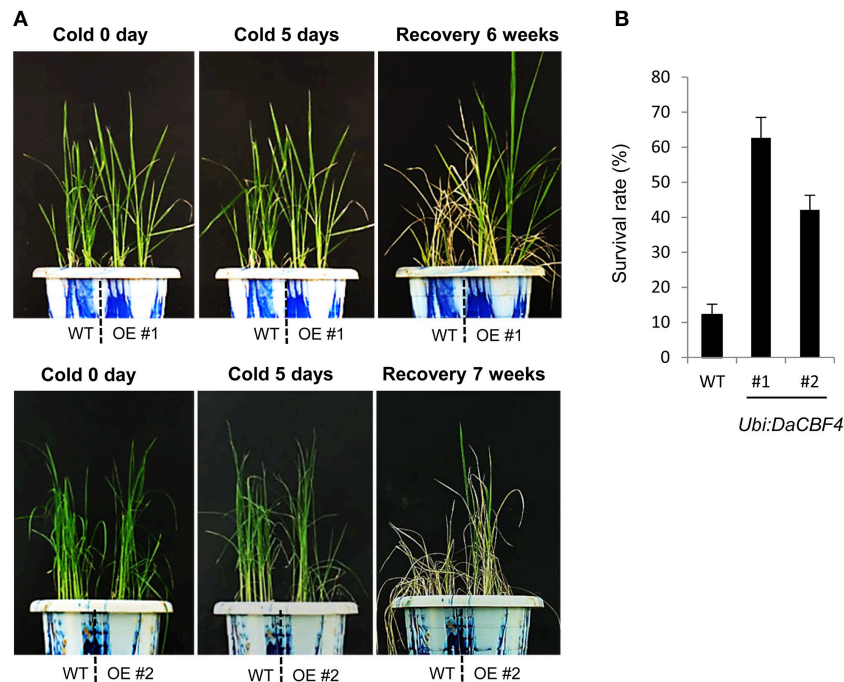


FIGURE 4 | Comparison of cold-stress tolerance between wild-type (WT) and *Ubi:DaCBF4* transgenic plants. **(A)** Six-week-old wild type (WT) and T2 *Ubi:DaCBF4* (line #1 and #2) rice plants were subjected to cold treatment at 4°C for 5 days, recovered to normal condition at 28°C, and then compared their survival rates. **(B)** Survival rates of WT and two independent transgenic lines under cold-stress conditions. Results are expressed as means from four independent experiments and 11 plants were used for each experiment. Error bars represent standard deviation of means of independent experiments.

wild-type and transgenic plants were almost entirely bleached and unable to recover. Therefore, constitutive expression of *DaCBF4* increased the tolerance of rice to cold stress, but had no effect on the tolerance to dehydration or salt stress.

Transcriptome Analysis of *Ubi:DaCBF4* Transgenic Plants Under Cold-Stress Conditions

As *DaCBF4*-overexpressing rice plants were more tolerant to cold stress than wild-type plants, we next performed a transcriptomic analysis of *Ubi:DaCBF4* and wild-type plants to identify the downstream target genes of *DaCBF4* responsible for the enhanced cold tolerance. We conducted RNA-seq analysis using the total RNA from 6-week-old leaves of wild-type and *Ubi:DaCBF4* (transgenic line #1) plants grown under normal (before cold treatment) and cold-stress (1 and 6 days at 4°C) conditions. Transgenic line #1 was selected for RNA-seq analysis because it displayed a higher survival rate after cold stress than line #2 (Figure 4). The raw reads were mapped to the rice reference genome. The expression values were measured in FPKM and the differentially expressed genes (DEGs) were determined.

We reported previously that constitutive expression of *DaCBF7*, one of the *CBF* genes of *D. antarctica*, enhanced the cold-stress tolerance of transgenic rice plants by modulating the expression levels of downstream genes (Byun et al., 2015). Because the *DaCBF4*-overexpressing plants showed a cold-specific phenotype similar to that of the *DaCBF7*-overexpressing

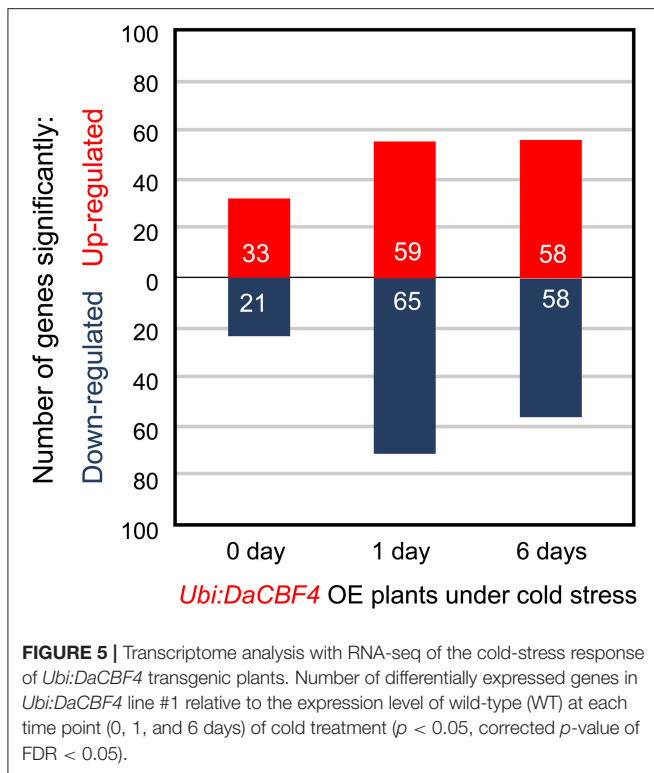
plants, we identified the genes responsible for the increased cold tolerance by screening for genes up- or down-regulated in both transgenic rice plants.

Genes Upregulated Under Normal Conditions

Under normal growth conditions, 33 genes were upregulated in *Ubi:DaCBF4* line #1 compared to wild-type rice plants (Figure 5 and Supplementary Table 3). This indicated that constitutive expression of *DaCBF4* influenced the gene expression profile of transgenic plants even before cold treatment. Among them, nine genes were also upregulated in *Ubi:DaCBF7* plants compared to wild-type plants (Table 1), including those encoding a protease inhibitor family protein (*BTTI12*, Os01g04050) and non-specific lipid transfer proteins (*LTPL114*, Os03g01300; *LTPL12*, Os12g02320). The expression of three genes annotated as expressed proteins was highly induced in both transgenic plants. Furthermore, the induction of the expression of the genes encoding dirigent (Os11g10850), thaumatin (Os12g43380), and ribonuclease T2 family domain-containing protein (Os09g36680) differed between the two transgenic plants under normal conditions.

Genes Upregulated Under Cold-Stress Conditions

After 1 day of cold-stress conditions, 59 genes were upregulated in the *Ubi:DaCBF4* transgenic rice plants compared to the wild type (Figure 5 and Supplementary Table 4). Of these, 15



were upregulated in both *Ubi:DaCBF4* and *Ubi:DaCBF7* after 1 day of cold-stress conditions (Table 1). The gene encoding AP domain-containing protein (Os02g43970) exhibited the greatest fold-change in expression in both transgenic lines compared to wild-type plants, except for five genes annotated as expressed proteins. This indicates that activation of the expression of downstream COR genes in transgenic plants is a multi-step process. Three transcription factor-encoding genes, dehydration-responsive element-binding protein (Os09g35030), ethylene-insensitive 3 (Os07g48630), and helix-loop-helix DNA-binding domain containing protein (Os01g67480), were upregulated, suggesting a role in the cold tolerance of rice. In addition, the expression of two late embryogenesis-abundant protein (LEA) genes encoding OsLEA9 (Os01g21250) and OsLEA24 (Os03g45280) were induced under cold-stress conditions. The expression of OsLEA24 was induced after 1 and 6 days of cold-stress conditions, but OsLEA9 expression was induced only after 6 days. The expression levels of OsBI (transmembrane BAX inhibitor motif-containing protein; Os02g03280) and OsMDH (lactate/malate dehydrogenase; Os10g33800) were increased after 6 days of cold-stress conditions.

Genes Downregulated in Transgenic Rice Plants

In total, 130 genes were downregulated in *Ubi:DaCBF4* under normal and cold-stress conditions (Supplementary Table 5). To identify enriched Gene Ontology (GO) terms for these genes, over-represented GO categories were analyzed using AgriGO (Fisher's exact test $p < 0.05$) (Tian et al., 2017).

In the Biological Process category, the GO terms photosynthesis, generation of precursor metabolites and energy, and translation were significantly enriched in downregulated genes in *Ubi:DaCBF4* plants; the most highly enriched GO term was photosynthesis with the lowest corrected p -value of FDR, $2.21e-15$ (Supplementary Figure 2). Six of the 14 genes included in the GO term photosynthesis were significantly downregulated in *Ubi:DaCBF7* plants under cold-stress compared to normal conditions. These comprised the genes encoding chlorophyll A-B binding protein (Os01g41710 and Os07g37240), photosynthetic reaction center protein (Os08g35420), photosystem II 10 kDa polypeptide chloroplast precursor (Os08g10020), photosystem II 44 kDa reaction center protein (Os04g16874), and photosystem II D2 protein (Os04g16872) (Table 2).

Validation of DEGs in *Ubi:DaCBF4* Transgenic Plants

To validate the DEG results, 12 genes that were differentially expressed in *Ubi:DaCBF4* transgenic plants under normal and cold-stress conditions were subjected to RT-qPCR (Figure 6A). Under normal conditions, the expression patterns of nine genes—including *BBT112* (Os01g04050), *RNase T2* (Os09g36680), *LTPL114* (Os03g01300), *Thaumatococcus* (Os12g43380), *LTPL12* (Os12g02320), *Dirigent* (Os11g10850)—and three unknown genes—Os01g15270, Os03g02470, and Os10g22630—were in overall agreement with those determined by RNA-seq. The fold-changes in expression determined by RNA-seq and RT-qPCR differed slightly for *LTPL114*, *Thaumatococcus*, and Os10g22630, but their expression was increased in *Ubi:DaCBF4* line #1 and line #2 compared to wild-type plants. Under cold-stress conditions, the expression patterns of five genes—including *OsLEA24* (Os03g45280), *OsBI* (Os02g03280), *OsMDH* (Os10g33800)—and two unknown genes—Os03g02470 and Os10g22630—were in agreement with those determined by RNA-seq, and the expression of these genes was higher in independent two lines of *Ubi:DaCBF4* compared to wild-type plants.

Promoter analysis represented that *OsLEA24* and *Os10g22630* contain putative CRT/DRE cis-acting elements in their promoter regions (Figure 6B). In addition, the upstream regions of the *OsBI* and *Os03g02470* have a putative low temperature responsive element (LTRE). To investigate the function of DaCBF4 as a transcription factor, we conducted gel retardation analysis with 32 P-labeled promoter regions of the target gene promoter. As shown in Figure 6B, the His-DaCBF4 protein bound to DNA and formed nucleoprotein complex. These results are in agreement with the fact that the above-mentioned genes are regulated by ectopic expression of *DaCBF4* in rice plants.

Differential Expression of AP2 Genes in *Ubi:DaCBF4* and *Ubi:DaCBF7*

In addition to searching for genes responsible for increased cold tolerance, investigating the specificity of DaCBF4 to its downstream targets is important for understanding the molecular mechanism of regulation for downstream genes by the group IV CBF. We could make a list of 72 genes which

TABLE 1 | List of differentially induced genes in both transgenic rice plants *Ubi:DaCBF4* and *Ubi:DaCBF7* under normal control or cold stress conditions when compared to wild type plants.

Locus ID	Annotations—Description	RNA-seq analysis; Baggerley's test			
		<i>Ubi:DaCBF4</i> vs. wild-type		<i>Ubi:DaCBF7</i> vs. wild-type	
		Fold change	FDR p -value correction	Fold change	FDR p -value correction
NORMAL CONDITION					
Os11g10850	Dirigent	15.42	3.26E-02	210	1.09E-03
Os12g43380	Thaumatococin	5.17	1.54E-04	11.21	0
Os09g36680	Ribonuclease T2 family domain containing protein	3.06	0	2.89	0
Os01g04050	BBT112—Bowman-Birk type bran trypsin inhibitor	2.26	2.43E-04	3.90	1.50E-03
Os12g02320	LTPL12—Protease inhibitor family protein	1.60	1.51E-02	1.94	1.11E-10
Os03g01300	LTPL114—Protease inhibitor family protein	1.60	2.89E-11	11.98	2.92E-08
Os10g22630	Expressed protein	614.27	1.13E-11	453.35	0
Os03g02470	Expressed protein	211.86	1.41E-02	457	8.73E-09
Os01g15270	Expressed protein	1.77	9.15E-08	2.04	4.90E-06
COLD STRESS, 1 DAY					
Os02g43970	AP2 domain containing protein	30.60	0	385.13	2.84E-07
Os03g45280	Dehydrin (OsLEA24)	5.22	0	1.36	1.60E-11
Os09g35030	Dehydration-responsive element-binding protein	2.91	1.81E-05	1.77	9.62E-11
Os08g37670	Plastocyanin-like domain containing protein	2.82	0	4.26	0
Os01g09220	Transposon protein putative CACTA En/Spm sub-class	2.16	6.39E-07	3.44	0
Os07g48630	Ethylene-insensitive 3	2.06	7.36E-12	1.39	2.01E-02
Os01g67480	Helix-loop-helix DNA-binding domain containing protein	2.00	1.97E-03	1.67	2.92E-02
Os09g36680	Ribonuclease T2 family domain containing protein	1.69	3.44E-04	3.56	0
Os01g21250	Late embryogenesis abundant protein (OsLEA9)	1.59	0	1.53	0
Os04g58710	AMP-binding domain containing protein	1.22	2.21E-07	1.97	0
Os01g06882	Expressed protein	1154.57	3.62E-03	378	3.61E-07
Os04g01330	Expressed protein	535.30	1.17E-06	385.13	0
Os10g22630	Expressed protein	279.51	9.38E-05	388.62	0
Os03g02470	Expressed protein	191.20	6.65E-03	291	2.63E-05
Os06g09900	Expressed protein	1.79	1.32E-10	1.25	9.13E-03
COLD STRESS, 6 DAY					
Os02g43970	AP2 domain containing protein	106.23	2.94E-08	99.36	1.90E-05
Os02g03280	Transmembrane BAX inhibitor motif-containing protein	3.84	0	1.27	1.26E-03
Os10g33800	Lactate/malate dehydrogenase	2.26	6.68E-04	1.82	8.47E-10
Os03g45280	Dehydrin (OsLEA24)	1.93	6.41E-11	1.72	7.26E-11
Os04g16770	Photosynthetic reaction center protein	1.81	0	1.39	0
Os09g25320	Ubiquitin family protein	1.79	4.38E-02	1.45	2.82E-03
Os08g35420	Photosynthetic reaction center protein	1.50	0	2.67	0
Os01g68300	Expressed protein	2.99	1.30E-02	2.90	0
Os12g39930	Expressed protein	1.62	0	5.96	0
Os10g21190	Expressed protein	1.59	0	4.66	0

Results for *Ubi:DaCBF7* were adopted from Byun et al. (2015).

were upregulated exclusively in *Ubi:DaCBF4* under cold stress condition, compared to *Ubi:DaCBF7*. When over-represented GO categories were analyzed using AgriGO (Fisher's exact test $p < 0.05$) (Tian et al., 2017), the GO term regulation of metabolic process was the only significantly enriched one (corrected p -value of FDR = 0.022). Notably, seven genes included in this group were encoding AP2 domain containing protein (Supplementary Table 6). For comparative analysis,

we also identified 7 more AP2 genes, which were induced exclusively in *Ubi:DaCBF7* under cold stress. As a result of promoter analysis, we could identify 9 DRE/CRT and 4 LTRE elements from *DaCBF4* induced 7 AP2 genes, and 5 DRE/CRT and 8 LTRE elements from *DaCBF7* induced 7 AP2 genes, which imply that different CBF homolog protein may prefer different type of *cis*-element in promoters of target genes.

TABLE 2 | List of differentially down-regulated genes belonging to GO term “Photosynthesis” (GO:0015979) in both transgenic rice plants *Ubi:DaCBF4* and *Ubi:DaCBF7* under normal control or cold stress condition when compared to wild type plants.

Locus ID	Annotations—description	RNA-seq analysis; Baggerley's test			
		<i>Ubi:DaCBF4</i> vs. wild-type		<i>Ubi:DaCBF7</i> vs. wild-type	
		Fold change	FDR p -value correction	Fold change	FDR p -value correction
NORMAL CONDITION					
Os01g41710	Chlorophyll A-B binding protein	-1.760	1.782E-22	-2.044	0
Os08g10020	Photosystem II 10 kDa polypeptide chloroplast precursor	-1.391	8.340E-06	-1.591	2.654E-120
COLD STRESS, 1 DAY					
Os08g35420	Photosynthetic reaction center protein	-2.455	2.951E-72	-10.319	3.584E-189
Os07g37240	Chlorophyll A-B binding protein	-2.367	2.021E-06	-1.244	3.942E-10
Os04g16874	Photosystem II 44 kDa reaction center protein	-1.741	9.320E-06	-5.394	1.856E-16
Os04g16872	Photosystem II D2 protein	-1.428	1.597E-02	-4.161	6.194E-19

Results for *Ubi:DaCBF7* were adopted from Byun et al. (2015).

DISCUSSION

Cloning and Characterization of *DaCBF4* From *D. antarctica*

We isolated *DaCBF4* from the Antarctic plant *D. antarctica* (Poaceae; Pooideae). Phylogenetic analysis revealed that *DaCBF4* is grouped within the cereal CBF group IV (Badawi et al., 2007). Because cereal CBF group IV is found only in the Pooideae, members of this group are considered to have evolved during the recent translocation of these plants from tropical to temperate habitats, suggesting possible roles in adaptation to low temperature (Badawi et al., 2007). RT-qPCR analyses revealed that the expression levels of *DaCBF4* in *D. antarctica* under cold and drought stresses were increased, and cold stress resulted in an increase in expression of greater magnitude than did drought stress (Figure 2). Induction of CBF IV group gene expression by cold stress also occurs in barley, wheat, and *Brachypodium distachyon* (Kume et al., 2005; Skinner et al., 2005; Chen et al., 2016). Together with the cellular localization of 35S:*DaCBF4*-sGFP in the nucleus of tobacco protoplasts (Figure 1), DNA binding affinity of *DaCBF4* (Figure 6B) represented possible roles of this protein as a transcription factor in Antarctic hairgrass. The considerable induction of *DaCBF4* expression under cold stress suggests that *DaCBF4* regulates development of cold tolerance in *D. antarctica* during adaptation to the low-temperature environment of the Antarctic.

Phenotype of *Ubi:DaCBF4* Plants Under Normal and Cold-Stress Conditions

We generated *CBF*-overexpressing transgenic plants to assess the roles of these genes in tolerance to abiotic stresses. Most of the transgenic plant lines exhibited enhanced tolerance to cold, drought, and salt stresses; this was mediated by modulating the expression of downstream stress-responsive genes (Lata and Prasad, 2011). Constitutive expression of *CBF* transcription factors generally enhances stress tolerance, but in some cases results in retarded normal growth (dwarf phenotype) and delayed flowering (Ito et al., 2006; Wei et al., 2017). In contrast, other

CBF-overexpressing transgenic plants displayed no differences in phenotype under normal growth conditions (Oh et al., 2007; Xu et al., 2011; Byun et al., 2015). In this study, constitutive expression of *DaCBF4* from *D. antarctica* enhanced cold-stress tolerance without affecting development. The distinct effects of *CBF* overexpression on vegetative growth may be due to different generation of transgenic plants analyzed (Oh et al., 2007). However, the molecular mechanisms underlying the different growth phenotypes of the various transgenic plant lines remain to be elucidated.

Comparative RNA-Seq Analysis of *Ubi:DaCBF4* and *Ubi:DaCBF7*

Overexpression of *CBF* reportedly enhances the cold tolerance of barley, rice, and wheat (Ito et al., 2006; Oh et al., 2007; Gao et al., 2009; Morran et al., 2011; Xu et al., 2011). However, only a few studies have performed high-throughput transcriptome analysis of downstream genes regulated by overexpressed *CBF* transcription factors, all of them in rice (Oh et al., 2005, 2007; Ito et al., 2006). We reported previously that the overexpression of *DaCBF7*, a *CBF* homolog from *D. antarctica*, resulted in enhanced tolerance to cold in rice, similar to *DaCBF4* in this study. Moreover, the transcriptome of *Ubi:DaCBF7* was analyzed by RNA-seq to identify downstream genes involved in promoting cold tolerance in transgenic rice plants (Byun et al., 2015). Therefore, in this study we focused on downstream target genes regulated by both *DaCBF7* and *DaCBF4* that enhance the cold tolerance of rice.

Genes Upregulated in *Ubi:DaCBF4* and *Ubi:DaCBF7* Plants Under Normal Conditions

Nine genes were upregulated in both *Ubi:DaCBF4* and *Ubi:DaCBF7* transgenic rice plants under normal conditions (Table 1), the majority are abiotic stress-responsive genes in various plant species. *LTPL12* (Os12g02320) and *LTPL114* (Os03g01300) encode non-specific lipid transfer proteins (LTPs) involved in lipid metabolism. In addition, *LTP* expression is

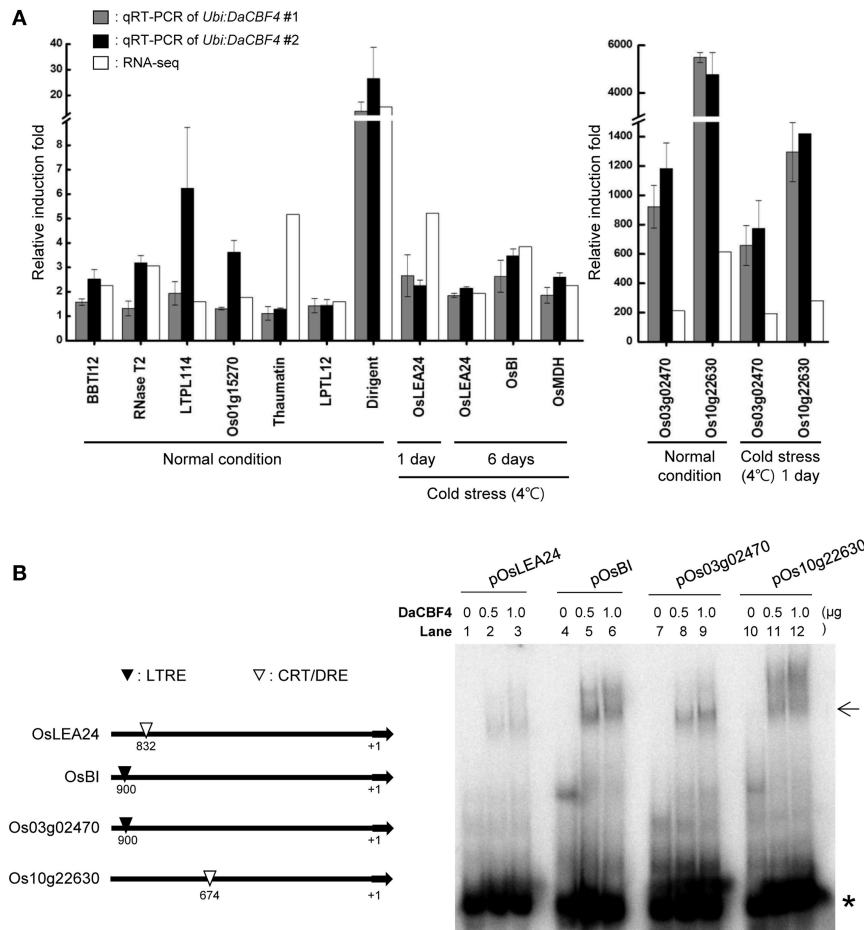


FIGURE 6 | Validation of the gene expression profiles obtained in RNA-seq by RT-qPCR and gel retardation analysis. **(A)** Light-grown, 6-week-old wild-type and *Ubi:DaCBF4* plants were subjected to cold (4°C) stress for 1 day and 6 days, respectively. DEGs commonly up-regulated in *Ubi:DaCBF4* and *Ubi:DaCBF7* transgenic plants under normal condition or cold stress condition were confirmed by RT-qPCR using the gene-specific primers listed in Supplementary Table 2. Data represent the fold induction of each gene in *Ubi:DaCBF4* #1 and #2 plants relative to wild type plants. Gray bars show relative gene expression of *Ubi:DaCBF4* #1 normalized to the level of *OsActin* mRNA as an internal control, which indicate means \pm SD from three biological replicates. In addition, black bars indicate relative induction fold of *Ubi:DaCBF4* #2, which indicate means \pm SD from biological duplicates. White bars represent fold change of the selected genes in RNA-seq. **(B)** Gel retardation assay. (Left panel) Schematic presentation of four DaCBF4-induced target genes. +1 indicates a transcription initiation site. Putative CRT/DRE and LTRE motifs are indicated by ▽ and ▼, respectively. (Right panel) Gel retardation assay was performed with the ³²P-radiolabeled promoter sequence of *OsLEA24* (lanes 1-3), *OsBI* (lanes 4-6), *Os03g02470* (lanes 7-9), *Os10g22630* (lanes 10-12). Each set of lanes contained 0, 0.5, or 1.0 µg of bacterially-expressed, full-length His-DaCBF4 recombinant protein, respectively. Arrow and asterisk (*) indicate positions of DNA-DaCBF4 complex and free probe, respectively.

induced in plant cells upon exposure to abiotic stresses. The bromegrass LTP gene *BG-14* was strongly induced during cold acclimation (Wu et al., 2004), and the expression of two barley *LTP4* genes, *HvLtp4.2*, and *HvLtp4.3*, was increased under cold-stress conditions (Molina et al., 1996). Overexpression of the pearl millet *DREB2A* transcription factor gene in tobacco and of the rice *DREB1A* gene in rice plants enhanced abiotic stress tolerance and induced the expression of *LTP* homologs under cold-stress conditions (Ito et al., 2006; Agarwal et al., 2010). The LTP-mediated resistance of plants to cold is associated with a decrease in thylakoid membrane lipid fluidity (Sror et al., 2003). Dirigent (*Os11g10850*) encodes a protein that modulates lignin biosynthesis and cell wall metabolism during exposure to abiotic stresses (Paniagua et al., 2017). Dirigent proteins are

implicated in modulation of lignification levels upon exposure to abiotic stresses. The expression of several of the DIR-like genes from *Brassica rapa* and the resurrection plant *Boea hygrometrica* (*BhDIR1*) was influenced by water and cold stress (Wu et al., 2009; Arasan et al., 2013). Therefore, modulation of plant cell wall metabolism and fluidity is crucial for the cold-stress tolerance of plants. However, the molecular mechanisms underlying the effects of dirigent proteins on plant abiotic stress tolerance are unclear.

BBT112 (*Os01g04050*) belongs to the Bowman-Birk family, which consists of compound inhibitors comprising one to six inhibitor units that target serine proteases (Rawlings, 2010). *BBT11* and *BBT12*, rice BBTI homologs, are induced under normal conditions in barley *CBF4*- or *Arabidopsis*

CBF3-overexpressing transgenic rice plants (Oh et al., 2005, 2007). Proteins are influenced by abiotic stressors and, are the major players in plant responses to stress (Kidrič et al., 2014); thus, BBTI-mediated fine control of protein degradation may be required for survival of plants exposed to abiotic stresses. Expression of *OsRNS4*, which encodes the ribonuclease T2 family domain-containing protein (Os09g36680) was increased in response to biotic stresses, such as insects and *Xanthomonas oryzae*, and abiotic stresses, such as wounding and high-salt conditions (Hillwig, 2009). Overexpression of *OsRNS4* enhanced tolerance to a high salt concentration, but the effect on cold tolerance was not evaluated (Zheng et al., 2014). Because *OsRNS4* is an inactive RNase (Hillwig, 2009), its role in the response to abiotic stresses may be independent of its enzymatic activity. In this study, the expression of *Thaumatin*, a member of the pathogenesis-related protein 5 (PR5) family, was induced in transgenic rice plants. Moreover, the expression in winter wheat (*T. aestivum* L.) of *TaTLP*, which encodes a thaumatin-like protein (TLP), was increased during cold acclimation of wheat seedlings (Kuwabara et al., 2002). Overexpression of *ObTLP1*, a thaumatin-like protein from basil, in *Arabidopsis* enhances tolerance of plants to multiple abiotic stresses as well as the phytopathogenic fungi, *Sclerotinia sclerotiorum* and *Botrytis cinerea* (Misra et al., 2016).

To summarize, *DaCBF4* and *DaCBF7* enhance cold-stress tolerance by activating the expression of target genes with roles in biotic and abiotic stress responses. Interestingly, most of the genes upregulated in both plants under normal conditions are reportedly responsive to both biotic and abiotic stresses. Therefore, the pathogen resistance of *Ubi:DaCBF4* and *Ubi:DaCBF7* plants warrants further investigation.

Genes Upregulated in *Ubi:DaCBF4* and *Ubi:DaCBF7* Under Cold-Stress Conditions

Fifteen and ten genes were upregulated in both transgenic plants in response to 1 day and 6 days of cold stress, respectively (Table 1). Among them, two were *LEA* (late embryogenesis abundant) genes, which respond to cold, drought, salinity, and ABA stresses during the vegetative stage of growth (Liu et al., 2017). *LEA* genes are abundant in plant genomes; the *Arabidopsis* and rice genomes harbor at least 51 and 34 *LEA* genes, respectively (Wang et al., 2007; Hundertmark and Hinch, 2008). *LEA* proteins are classified into seven groups according to their motifs (Battaglia et al., 2008). The diverse gene expression levels and protein subcellular distributions suggest that different *LEAs* are involved in the responses to diverse environmental stimuli (Hundertmark and Hinch, 2008; Candat et al., 2014). *LEA* proteins may be involved in protection of proteins or endomembrane structures under stress conditions (Koag et al., 2003; Drira et al., 2013). *LEA* expression enhances stress tolerance in transgenic plants (Kosová et al., 2014). Overexpression of wheat *WC116* or *Arabidopsis Cor15A* leads to increased freezing tolerance in transgenic plants (Artus et al., 1996; Sasaki et al., 2014). Heterologous expression of individual *PmLEAs* genes in tobacco conferred enhanced tolerance to cold and drought stress (Bao et al., 2017).

OsDhn1-overexpressing plants displayed enhanced drought- and salt-stress tolerance due to increased scavenging of reactive oxygen species (Kumar et al., 2014). Transcriptome analysis of *Ubi:DaCBF4* and *Ubi:DaCBF7* plants showed specific changes in two *LEA* proteins, *OsLEA9* (group III) and *OsLEA24* (group II [dehydrin], characterized by a K-segment). These genes have a DRE/CRT sequence in their upstream regions and may be directly regulated by *DaCBF* proteins (Byun et al., 2015). Elevated expression levels of *OsLEA9* and *OsLEA24* are positively correlated with cold-stress tolerance in transgenic rice plants. Overall, these results suggest that the *OsLEA9* and *OsLEA24* genes, which are downstream of *DaCBF*, can be used as target genes for genetic engineering of crops with enhanced stress tolerance.

In addition to cold responsive genes, the induction of a rice gene *Os02g43970*, encoding AP2 domain containing protein, was highly strong under cold condition, but was not significant in the normal condition (Table 1). Moreover, 7 more genes encoding AP2 domain containing protein were significantly upregulated exclusively in *Ubi:DaCBF4* under cold condition, but not in *Ubi:DaCBF7* under normal or cold conditions (Supplementary Table 6). Based on results that those *CBF* genes still can exhibit a cold responsive expression pattern, we can assume that their induction in *Ubi:DaCBF4* is caused by additive effect of *DaCBF4* overexpression and native *CBF* response to cold treatment. Similar phenomena were also observed in previous studies on transgenic barley overexpressing *TaCBF2/3*, *TaCBF14/15*, and *HvCBF2A* (Morran et al., 2011; Soltész et al., 2013; Jeknić et al., 2014).

For more investigation on difference of target specificities between two transgenes *DaCBF4* and *DaCBF7*, we examined *cis*-element sequences of two AP2 gene groups, *DaCBF4* induced and *DaCBF7* induced group. *DaCBF4* induced AP2 genes had more DRE/CRT (9) and less LTRE elements (4) than *DaCBF7* induced 7 AP2 genes with 5 DRE/CRT and 8 LTRE elements. Obviously further researches on the genome wide analysis of rice AP2 genes and their distribution profile of promoter elements are still necessary, activation of different subset of AP2 genes by *DaCBF4* and *DaCBF7* can be an indirect evidence of distinctive specificity and biological activity for each *CBF* protein in plants under abiotic stresses.

Genes Downregulated in *Ubi:DaCBF4* and *Ubi:DaCBF7* Plants

In total, 130 genes were downregulated in the *Ubi:DaCBF4* transgenic line under normal and cold-stress conditions. Photosynthesis was the most enriched GO term (Supplementary Figure 2). Six genes encoding photosystem proteins were significantly downregulated in both *Ubi:DaCBF4* and *Ubi:DaCBF7* (Table 2). Cold stress generally reduces photosynthetic activity and downregulates the expression of photosynthesis-related genes (Allen and Ort, 2001; Fowler and Thomashow, 2002; Tsonev et al., 2003). In addition, photosynthesis-related genes are downregulated in *CBF*-overexpressing transgenic plants compared to

wild-type plants. However, most studies did not identify the downregulated genes as upregulated genes are more important in terms of stress tolerance. An RNA-Seq study revealed that genes with diverse functions were downregulated in *AtCBF2*- and *AtCBF3*-overexpressing *Arabidopsis* lines, but photosynthesis-related genes were not over-represented among the downregulated genes (Li et al., 2017). However, in this study, the expression of photosynthesis-related genes was decreased in both transgenic rice lines; therefore, the mechanism by which *DaCBFs* regulate the expression of genes involved in photosynthesis warrants further investigation.

CONCLUSION

Our results showed that heterologous expression of Antarctic hairgrass *DaCBF4* increased the tolerance of transgenic rice plants to low-temperature stress. A comparative transcriptome analysis identified common downstream targets of DaCBF4 and DaCBF7 that resulted in the same phenotype. The genes identified in this study will facilitate genetic engineering of cereal plants with enhanced cold tolerance.

REFERENCES

- Agarwal, P., Agarwal, P. K., Joshi, A. J., Sopory, S. K., and Reddy, M. K. (2010). Overexpression of *PgDREB2A* transcription factor enhances abiotic stress tolerance and activates downstream stress-responsive genes. *Mol. Biol. Rep.* 37, 1125–1135. doi: 10.1007/s11033-009-9885-8
- Alberdi, M., Bravo, L. A., Gutiérrez, A., Gidekel, M., and Corcuera, L. J. (2002). Ecophysiology of Antarctic vascular plants. *Physiol. Plant.* 115, 479–486. doi: 10.1034/j.1399-3054.2002.1150401.x
- Allen, D. J., and Ort, D. R. (2001). Impacts of chilling temperatures on photosynthesis in warm-climate plants. *Trends Plant Sci.* 6, 36–42. doi: 10.1016/S1360-1385(00)01808-2
- Arasan, S. K. T., Park, J. I., Ahmed, N. U., Jung, H. J., Hur, Y., Kang, K. K., et al. (2013). Characterization and expression analysis of dirigent family genes related to stresses in *Brassica*. *Plant Physiol. Biochem.* 67, 144–153. doi: 10.1016/j.plaphy.2013.02.030
- Artus, N. N., Uemura, M., Steponkus, P. L., Gilmour, S. J., Lin, C., and Thomashow, M. F. (1996). Constitutive expression of the cold-regulated *Arabidopsis thaliana* *COR15a* gene affects both chloroplast and protoplast freezing tolerance. *Proc. Natl. Acad. Sci. U.S.A.* 93, 13404–13409. doi: 10.1073/pnas.93.23.13404
- Badawi, M., Danyluk, J., Boucho, B., Houde, M., and Sarhan, F. (2007). The CBF gene family in hexaploid wheat and its relationship to the phylogenetic complexity of cereal CBFs. *Mol. Genet. Genomics* 277, 533–554. doi: 10.1007/s00438-006-0206-9
- Bao, F., Du, D., An, Y., Yang, W., Wang, J., Cheng, T., et al. (2017). Overexpression of *Prunus mume* dehydrin genes in tobacco enhances tolerance to cold and drought. *Front. Plant Sci.* 8:151. doi: 10.3389/fpls.2017.00151
- Battaglia, M., Olvera-Carrillo, Y., Garciarrubio, A., Campos, F., and Covarrubias, A. A. (2008). The enigmatic LEA proteins and other hydrophilins. *Plant Physiol.* 148, 6–24. doi: 10.1104/pp.108.120725
- Bravo, L. A., and Griffith, M. (2005). Characterization of antifreeze activity in Antarctic plants. *J. Exp. Bot.* 56, 1189–1196. doi: 10.1093/jxb/eri112
- Byun, M. Y., Cui, L. H., Oh, T. K., Jung, Y. -J., Lee, A., Park, K. Y., et al. (2017). Homologous U-box E3 ubiquitin ligases OsPUB2 and OsPUB3 are involved in the positive regulation of low temperature stress response in rice (*Oryza sativa* L.). *Front. Plant Sci.* 8:16. doi: 10.3389/fpls.2017.00016

AUTHOR CONTRIBUTIONS

WTK and HL: conceived and designed the study; MYB, LHC, and AL: performed the experiments; MYB, LHC, JL, and HP: analyzed the data; MYB, LHC, WTK, and HL: discussed the results and wrote the manuscript.

ACKNOWLEDGMENTS

This work was supported by The Polar Genomics 101 Project: Genome analysis of polar organisms and establishment of application platform (PE18080) to HP, funded by the Korea Polar Research Institute; and a grant from the Next-Generation BioGreen 21 Program for Agriculture and Technology Development (Project Numbers PJ01113801 [NCGC] and PJ01334901 [SSAC]) funded by the Rural Development Administration, Republic of Korea, to WTK.

SUPPLEMENTARY MATERIAL

The Supplementary Material for this article can be found online at: <https://www.frontiersin.org/articles/10.3389/fpls.2018.00601/full#supplementary-material>

- Byun, M. Y., and Kim, W. T. (2014). Suppression of *OsRAD51D* results in defects in reproductive development in rice (*Oryza sativa* L.). *Plant J.* 79, 256–269. doi: 10.1111/tpj.12558
- Byun, M. Y., Lee, J., Cui, L. H., Kang, Y., Oh, T. K., Park, H., et al. (2015). Constitutive expression of *DaCBF7*, an Antarctic vascular plant *Deschampsia antarctica* CBF homolog, resulted in improved cold tolerance in transgenic rice plants. *Plant Sci.* 236, 61–74. doi: 10.1016/j.plantsci.2015.03.020
- Candat, A., Paszkiewicz, G., Neveu, M., Gautier, R., Logan, D. C., Avelange-Macherel, M. H., et al. (2014). The ubiquitous distribution of late embryogenesis abundant proteins across cell compartments in *Arabidopsis* offers tailored protection against abiotic stress. *Plant Cell* 26, 3148–3166. doi: 10.1105/tpc.114.127316
- Chen, L., Han, J., Deng, X., Tan, S., Li, L., Li, L., et al. (2016). Expansion and stress responses of AP2/EREBP superfamily in *Brachypodium distachyon*. *Sci. Rep.* 6:21623. doi: 10.1038/srep21623
- Claeys, H., and Inzé, D. (2013). The agony of choice: how plants balance growth and survival under water-limiting conditions. *Plant Physiol.* 162, 1768–1779. doi: 10.1104/pp.113.220921
- Cui, M., Zhang, W., Zhang, Q., Xu, Z., Zhu, Z., Duan, F., et al. (2011). Induced over-expression of the transcription factor *OsDREB2A* improves drought tolerance in rice. *Plant Physiol. Biochem.* 49, 1384–1391. doi: 10.1016/j.plaphy.2011.09.012
- Drira, M., Saibi, W., Brini, F., Gargouri, A., Masmoudi, K., and Hanin, M. (2013). The K-segments of the wheat dehydrin DHN-5 are essential for the protection of lactate dehydrogenase and β -glucosidase activities *in vitro*. *Mol. Biotechnol.* 54, 643–650. doi: 10.1007/s12033-012-9606-8
- Dubouzet, J. G., Sakuma, Y., Ito, Y., Kasuga, M., Dubouzet, E. G., Miura, S., et al. (2003). *OsDREB* genes in rice, *Oryza sativa* L., encode transcription activators that function in drought-, high-salt- and cold-responsive gene expression. *Plant J.* 33, 751–763. doi: 10.1046/j.1365-313X.2003.01661.x
- Fowler, S., and Thomashow, M. F. (2002). *Arabidopsis* transcriptome profiling indicates that multiple regulatory pathways are activated during cold acclimation in addition to the CBF cold response pathway. *Plant Cell* 14, 1675–1690. doi: 10.1105/tpc.003483
- Gao, S. Q., Chen, M., Xia, L. Q., Xiu, H. J., Xu, Z. S., Li, L. C., et al. (2009). A cotton (*Gossypium hirsutum*) DRE-binding transcription factor gene, *GhDREB*,

- confers enhanced tolerance to drought, high salt, and freezing stresses in transgenic wheat. *Plant Cell Rep.* 28, 301–311. doi: 10.1007/s00299-008-0623-9
- Gielwanowska, I., Szczuka, E., Bednara, J., and Górecki, R. (2005). Anatomical features and ultrastructure of *Deschampsia antarctica* (Poaceae) leaves from different growing habitats. *Ann. Bot.* 96, 1109–1119. doi: 10.1093/aob/mci262
- Gilmour, S. J., Fowler, S. G., and Thomashow, M. F. (2004). *Arabidopsis* transcriptional activators CBF1, CBF2, and CBF3 have matching functional activities. *Plant Mol. Biol.* 54, 767–781. doi: 10.1023/B:PLAN.0000040902.06881.d4
- Hillwig, M. S. (2009). *Regulation, Function, and Evolution of T2 RNases*. Graduate theses and dissertations. Available online at: <http://lib.dr.iastate.edu/etd/11095>
- Hundertmark, M., and Hincha, D. K. (2008). LEA (late embryogenesis abundant) proteins and their encoding genes in *Arabidopsis thaliana*. *BMC Genomics* 9:118. doi: 10.1186/1471-2164-9-118
- Ito, Y., Katsura, K., Maruyama, K., Taji, T., Kobayashi, M., Seki, M., et al. (2006). Functional analysis of rice DREB1/CBF-type transcription factors involved in cold-responsive gene expression in transgenic rice. *Plant Cell Physiol.* 47, 141–153. doi: 10.1093/pcp/pci230
- Jaglo-Ottosen, K. R., Gilmour, S. J., Zarka, D. G., Schabenberger, O., and Thomashow, M. F. (1998). *Arabidopsis* CBF1 overexpression induces *COR* genes and enhances freezing tolerance. *Science* 280, 104–106. doi: 10.1126/science.280.5360.104
- Jeknić, Z., Pillman, K. A., Dhillon, T., Skinner, J. S., Veisz, O., Cuesta-Marcos, A., et al. (2014). *Hv-CBF2A* overexpression in barley accelerates *COR* gene transcript accumulation and acquisition of freezing tolerance during cold acclimation. *Plant Mol. Biol.* 84, 67–82. doi: 10.1007/s11103-013-0119-z
- John, U. P., Polotnianka, R. M., Sivakumaran, K. A., Chew, O., Mackin, L., Kuiper, M. J., et al. (2009). Ice recrystallization inhibition proteins (IRIPs) and freeze tolerance in the cryophilic Antarctic hair grass *Deschampsia antarctica* E. Desv. *Plant Cell Environ.* 32, 336–348. doi: 10.1111/j.1365-3040.2009.01925.x
- Kidrić, M., Kos, J., and Sabotić, J. (2014). Proteases and their endogenous inhibitors in the plant response to abiotic stress. *Bot. Serb.* 38, 139–158.
- Koag, M. C., Fenton, R. D., Wilkens, S., and Close, T. J. (2003). The binding of maize DHN1 to lipid vesicles. Gain of structure and lipid specificity. *Plant Physiol.* 131, 309–316. doi: 10.1104/pp.011171
- Kosová, K., Vitámvás, P., and Prašil, I. T. (2014). Wheat and barley dehydrins under cold, drought, and salinity - what can LEA-II proteins tell us about plant stress response? *Front. Plant Sci.* 5:343. doi: 10.3389/fpls.2014.00343
- Kovalchuk, N., Jia, W., Eini, O., Morran, S., Pyvovarenko, T., Fletcher, S., et al. (2013). Optimization of *TaDREB3* gene expression in transgenic barley using cold-inducible promoters. *Plant Biotechnol. J.* 11, 659–670. doi: 10.1111/pbi.12056
- Kumar, M., Lee, S. C., Kim, J. Y., Kim, S. J., Aye, S. S., and Kim, S.-R. (2014). Over-expression of dehydrin gene, *OsDhn1*, improves drought and salt stress tolerance through scavenging of reactive oxygen species in rice (*Oryza sativa* L.). *J. Plant Biol.* 57, 383–393. doi: 10.1007/s12374-014-0487-1
- Kumar, S., Stecher, G., and Tamura, K. (2016). MEGA7: Molecular Evolutionary Genetics Analysis version 7.0 for bigger datasets. *Mol. Biol. Evol.* 33, 1870–1874. doi: 10.1093/molbev/msw054
- Kume, S., Kobayashi, F., Ishibashi, M., Ohno, R., Nakamura, C., and Takumi, S. (2005). Differential and coordinated expression of *Cbf* and *Cor/Lea* genes during long-term cold acclimation in two wheat cultivars showing distinct levels of freezing tolerance. *Genes Genet. Syst.* 80, 185–197. doi: 10.1266/ggs.80.185
- Kuwabara, C., Takezawa, D., Shimada, T., Hamada, T., Fujikawa, S., and Arakawa, K. (2002). Abscisic acid- and cold-induced thaumatin-like protein in winter wheat has an antifungal activity against snow mould, *Microdochium nivale*. *Physiol. Plant.* 115, 101–110. doi: 10.1034/j.1399-3054.2002.1150112.x
- Lata, C., and Prasad, M. (2011). Role of DREBs in regulation of abiotic stress responses in plants. *J. Exp. Bot.* 62, 4731–4748. doi: 10.1093/jxb/err210
- Lee, H., Kim, J. H., Park, M., Kim, I. C., Yim, J. H., and Lee, H. K. (2010). Reference genes validation for qPCR normalization in *Deschampsia antarctica* during abiotic stresses. *Antarct. Sci.* 22, 477–484. doi: 10.1017/S0954102010000428
- Lee, J., Noh, E. K., Choi, H. S., Shin, S. C., Park, H., and Lee, H. (2013a). Transcriptome sequencing of the Antarctic vascular plant *Deschampsia antarctica* Desv. under abiotic stress. *Planta* 237, 823–836. doi: 10.1007/s00425-012-1797-5
- Lee, J., Noh, E. K., Park, H., and Lee, H. (2013b). Transcription factor profile analysis of the Antarctic vascular plant *Deschampsia antarctica* Desv. (Poaceae). *Genes Genom.* 35, 575–586. doi: 10.1007/s13258-013-0106-4
- Li, A., Zhou, M., Wei, D., Chen, H., You, C., and Lin, J. (2017). Transcriptome profiling reveals the negative regulation of multiple plant hormone signaling pathways elicited by overexpression of C-repeat binding factors. *Front. Plant Sci.* 8:1647. doi: 10.3389/fpls.2017.01647
- Liu, Y., Song, Q., Li, D., Yang, X., and Li, D. (2017). Multifunctional roles of plant dehydrins in response to environmental stresses. *Front. Plant Sci.* 8:1018. doi: 10.3389/fpls.2017.01018
- Misra, R. C., Kamthan, M., Kumar, S., and Ghosh, S. (2016). A thaumatin-like protein of *Ocimum basilicum* confers tolerance to fungal pathogen and abiotic stress in transgenic *Arabidopsis*. *Sci. Rep.* 6:25340. doi: 10.1038/srep25340
- Molina, A., Diaz, I., Carbonero, P., García-Olmedo, F., and Vasil, I. K. (1996). Two cold-inducible genes encoding lipid transfer protein LTP4 from barley show differential responses to bacterial pathogens. *Mol. Gen. Genet.* 252, 162–168. doi: 10.1007/BF02173216
- Morran, S., Eini, O., Pyvovarenko, T., Parent, B., Singh, R., Ismagul, A., et al. (2011). Improvement of stress tolerance of wheat and barley by modulation of expression of DREB/CBF factors. *Plant Biotechnol. J.* 9, 230–249. doi: 10.1111/j.1467-7652.2010.00547.x
- Mortazavi, A., Williams, B. A., McCue, K., Schaeffer, L., and Wold, B. (2008). Mapping and quantifying mammalian transcriptomes by RNA-Seq. *Nat. Methods* 5, 621–628. doi: 10.1038/nmeth.1226
- Oh, S. J., Kwon, C. W., Choi, D. W., Song, S. I., and Kim, J. K. (2007). Expression of barley *HvCBF4* enhances tolerance to abiotic stress in transgenic rice. *Plant Biotechnol. J.* 5, 646–656. doi: 10.1111/j.1467-7652.2007.00272.x
- Oh, S. J., Song, S. I., Kim, Y. S., Jang, H. J., Kim, S. Y., Kim, M., et al. (2005). *Arabidopsis* CBF3/DREB1A and ABF3 in transgenic rice increased tolerance to abiotic stress without stunting growth. *Plant Physiol.* 138, 341–351. doi: 10.1104/pp.104.059147
- Paniagua, C., Bilkova, A., Jackson, P., Dabravolski, S., Riber, W., Didi, V., et al. (2017). Dirigent proteins in plants: modulating cell wall metabolism during abiotic and biotic stress exposure. *J. Exp. Bot.* 18, 3287–3301. doi: 10.1093/jxb/erx141
- Pastorczyk, M., Gielwanowska, I., and Lahuta, L. B. (2014). Changes in soluble carbohydrates in polar Caryophyllaceae and Poaceae plants in response to chilling. *Acta Physiol. Plant* 36, 1771–1780. doi: 10.1007/s11738-014-1551-7
- Rawlings, N. D. (2010). Peptidase inhibitors in the MEROPS database. *Biochimie* 92, 1463–1483. doi: 10.1016/j.biochi.2010.04.013
- Sáez, P. L., Bravo, L. A., Cavieres, L. A., Vallejos, V., Sanhueza, C., Font-Carrascosa, M., et al. (2017). Photosynthetic limitations in two Antarctic vascular plants: importance of leaf anatomical traits and Rubisco kinetic parameters. *J. Exp. Bot.* 68, 2871–2883. doi: 10.1093/jxb/erx148
- Sasaki, K., Christov, N. K., Tsuda, S., and Imai, R. (2014). Identification of a novel LEA protein involved in freezing tolerance in wheat. *Plant Cell Physiol.* 55, 136–147. doi: 10.1093/pcp/pct164
- Skinner, J. S., von Zitzewitz, J., Szucs, P., Marquez-Cedillo, L., Filichkin, T., Amundsen, K., et al. (2005). Structural, functional, and phylogenetic characterization of a large CBF gene family in barley. *Plant Mol. Biol.* 59, 533–551. doi: 10.1007/s11103-005-2498-2
- Soltész, A., Smedley, M., Vashegyi, I., Galiba, G., Harwood, W., and Vágújfalvi, A. (2013). Transgenic barley lines prove the involvement of *TaCBF14* and *TaCBF15* in the cold acclimation process and in frost tolerance. *J. Exp. Bot.* 64, 1849–1862. doi: 10.1093/jxb/ert050
- Sror, H. A., Tischendorf, G., Sieg, F., Schmitt, J. M., and Hincha, D. K. (2003). Cryoprotectin protects thylakoids during a freeze-thaw cycle by a mechanism involving stable membrane binding. *Cryobiology* 47, 191–203. doi: 10.1016/j.cryobiol.2003.09.005
- Stockinger, E. J. (2009). “Winter hardiness and the CBF genes in the Triticeae”, in *Plant Cold Hardiness: From the Laboratory to the Field*, eds L. V. Gusta, K. K. Tanino, and M. E. Wisniewski (Cambridge: CAB International), 119–130.
- Thomashow, M. F. (2010). Molecular basis of plant cold acclimation: insights gained from studying the CBF cold response pathway. *Plant Physiol.* 154, 571–577. doi: 10.1104/pp.110.161794
- Tian, T., Liu, Y., Yan, H., You, Q., Yi, X., Du, Z., et al. (2017). agriGO v2.0: a GO analysis toolkit for the agricultural community, 2017 update. *Nucleic Acids Res.* 45, W122–W129. doi: 10.1093/nar/gkx382

- Tondelli, A., Francia, E., Barabaschi, D., Pasquariello, M., and Pecchioni, N. (2011). Inside the *CBF* locus in *Poaceae*. *Plant Sci.* 180, 39–45. doi: 10.1016/j.plantsci.2010.08.012
- Tsonev, T., Velikova, V., Georgieva, K., Hyde, P. F., and Jones, H. G. (2003). Low temperature enhances photosynthetic downregulation in French bean (*Phaseolus vulgaris* L.) plants. *Ann. Bot.* 91, 343–352. doi: 10.1093/aob/mcg020
- Vágújfalvi, A., Aprile, A., Miller, A., Dubcovsky, J., Delugu, G., Galiba, G., et al. (2005). The expression of several *Cbf* genes at the *Fr-A2* locus is linked to frost resistance in wheat. *Mol. Genet. Genomics* 274, 506–514. doi: 10.1007/s00438-005-0047-y
- Wang, X. S., Zhu, H. B., Jin, G. L., Liu, H. L., Wu, W. R., and Zhu, J. (2007). Genome-scale identification and analysis of *LEA* genes in rice (*Oryza sativa* L.). *Plant Sci.* 172, 414–420. doi: 10.1016/j.plantsci.2006.10.004
- Wei, T., Deng, K., Zhang, Q., Gao, Y., Liu, Y., Yang, M., et al. (2017). Modulating *AtDREB1C* expression improves drought tolerance in *Salvia miltiorrhiza*. *Front. Plant Sci.* 8:52. doi: 10.3389/fpls.2017.00052
- Wu, G., Robertson, A. J., Liu, X., Zheng, P., Wilen, R. W., Nesbitt, N. T., et al. (2004). A lipid transfer protein gene *BG-14* is differentially regulated by abiotic stress, ABA, anisomycin, and sphingosine in bromegrass (*Bromus inermis*). *J. Plant Physiol.* 161, 449–458. doi: 10.1078/0176-1617-01259
- Wu, R., Wang, L., Wang, Z., Shang, H., Liu, X., Zhu, Y., et al. (2009). Cloning and expression analysis of a dirigent protein gene from the resurrection plant *Boea hygrometrica*. *Prog. Nat. Sci.* 19, 347–352. doi: 10.1016/j.pnsc.2008.07.010
- Xu, M., Li, L., Fan, Y., Wan, J., and Wang, L. (2011). ZmCBF3 overexpression improves tolerance to abiotic stress in transgenic rice (*Oryza sativa*) without yield penalty. *Plant Cell Rep.* 30, 1949–1957. doi: 10.1007/s00299-011-1103-1
- Zheng, J., Wang, Y., He, Y., Zhou, J., Li, Y., Liu, Q., et al. (2014). Overexpression of an S-like ribonuclease gene, *OsRNS4*, confers enhanced tolerance to high salinity and hyposensitivity to phytochrome-mediated light signals in rice. *Plant Sci.* 214, 99–105. doi: 10.1016/j.plantsci.2013.10.003

Conflict of Interest Statement: The authors declare that the research was conducted in the absence of any commercial or financial relationships that could be construed as a potential conflict of interest.

Copyright © 2018 Byun, Cui, Lee, Park, Lee, Kim and Lee. This is an open-access article distributed under the terms of the Creative Commons Attribution License (CC BY). The use, distribution or reproduction in other forums is permitted, provided the original author(s) and the copyright owner are credited and that the original publication in this journal is cited, in accordance with accepted academic practice. No use, distribution or reproduction is permitted which does not comply with these terms.